



Deposited via The University of Sheffield.

White Rose Research Online URL for this paper:

<https://eprints.whiterose.ac.uk/id/eprint/161242/>

Version: Accepted Version

Article:

Veth, P., Ditchfield, K., Bateman, M. et al. (2019) Minjiwarra : archaeological evidence of human occupation of Australia's northern Kimberley by 50,000 BP. *Australian Archaeology*, 85 (2). pp. 115-125. ISSN: 0312-2417

<https://doi.org/10.1080/03122417.2019.1650479>

This is an Accepted Manuscript of an article published by Taylor & Francis in *Australian Archaeology* on 19th August 2019, available online:

<http://www.tandfonline.com/10.1080/03122417.2019.1650479>.

Reuse

Items deposited in White Rose Research Online are protected by copyright, with all rights reserved unless indicated otherwise. They may be downloaded and/or printed for private study, or other acts as permitted by national copyright laws. The publisher or other rights holders may allow further reproduction and re-use of the full text version. This is indicated by the licence information on the White Rose Research Online record for the item.

Takedown

If you consider content in White Rose Research Online to be in breach of UK law, please notify us by emailing eprints@whiterose.ac.uk including the URL of the record and the reason for the withdrawal request.

Minjiwarra: archaeological evidence of human occupation of Australia's northern Kimberley by 50,000 BP

Peter Veth¹, Kane Ditchfield¹, Mark Bateman², Sven Ouzman¹, Marine Benoit¹, Ana Paula Motta¹, Darrell Lewis³, Sam Harper¹, and Balangarra Aboriginal Corporation⁴.

¹Archaeology and Centre for Rock Art Research + Management, School of Social Sciences, Faculty of Arts, Business and Law, University of WA, Crawley WA 6009, Australia

²Geography department, Sheffield University, Winter St., Sheffield, S10 2TN UK

³Archaeology, School of Humanities, University of New England, Armidale, NSW 2350

⁴ PO Box 372, Wyndham WA 6740, Australia

Keywords (up to 5)

Aboriginal Archaeology, Australia, Kimberley, luminescence, Pleistocene

Abstract

Recent archaeological research in Australia's north-eastern Kimberley has luminescence dated a large red sedimentary feature, known as Minjiwarra, with artefacts in stratified contexts from the late Holocene to ~50,000 years ago. This site is located on the Drysdale River, with preliminary excavations undertaken as part of an ARC Linkage Project. Deeply stratified sites in association with rockshelters are uncommon across the NE Kimberley. Basal dates at open cultural deposits vary greatly throughout the NE Kimberley. Most of them are mid-Holocene in age. However, Minjiwarra appears to cover the entire span of potential human occupation in this region, with associated lithic technology, reported on here.

Introduction

Minjiwarra is an archaeological site complex located on the lower catchment of the Drysdale River in Australia's northern Kimberley (Figure 1). Known colloquially as 'Big Red', but here named after its Kwini place name, Minjiwarra is a visually dominant, large sedimentary feature rising steeply from the western edge of the Drysdale River floodway (Figure 2). It rises to six metres in height from a carbonate pavement and extends horizontally for ~ 1 km along the river (Figure 3).

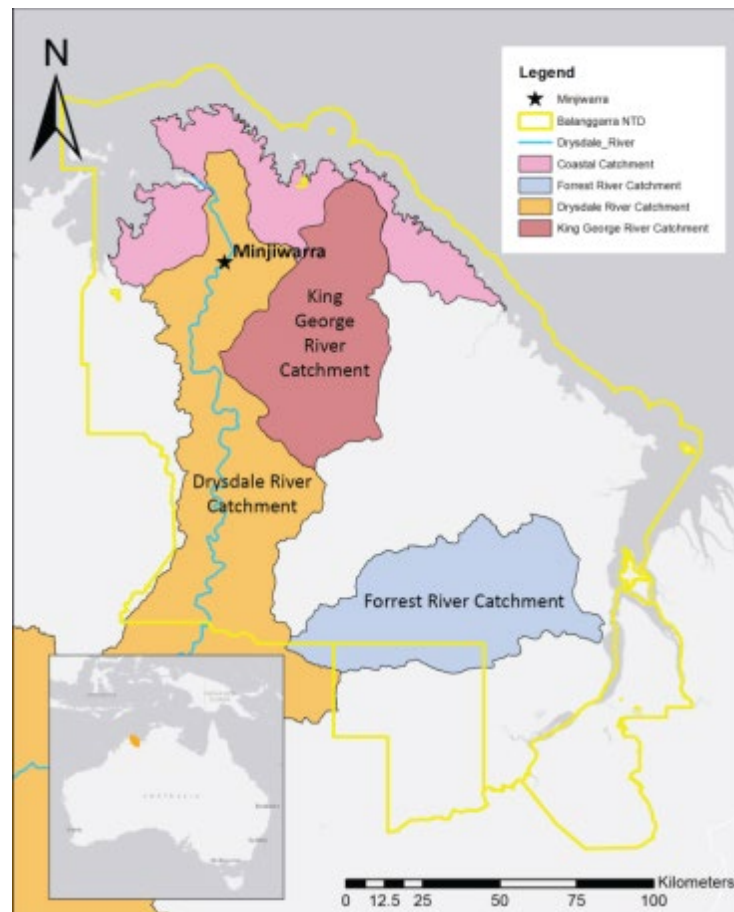


Figure 1. Location of Minjiwarra, northern Kimberley, Drysdale River, Australia.

The site was first described by Walsh (2000) as a dune and subsequently visited by geomorphologists and archaeologists such as Hammond, Morwood, Vita-Finzi, and Wyrwoll, who variously took samples for dating and artefacts for illustrating. No technical or site reports were produced. However, preliminary OSL results have been shared by Wyrwoll (pers. comm. 10 Aug 2017 and below). In July 2017 the site was sampled as part of the *Kimberley Visions: Rock Art Style Provinces of North Australia* ARC Linkage Project (LP150100490). Permits from the Kimberley Land Council, Balanggarra Aboriginal Corporation and Western Australian Department of Planning, Lands and Heritage were in place and Traditional Owners participated in the fieldwork and sampling. Minjiwarra is a site of continuing cultural significance to the Traditional Owners, the Waina family. We surveyed the stratified feature, took five sediment samples for optically stimulated luminescence (OSL) dating, and collected both *in situ* and surface artefacts, including stone axes. An OSL dating sequence was returned placing *in situ* artefacts from ca. 7.7 ka back to ca. 50 ka (Shfd17118, Shfd17119, Shfd17120, Shfd17121, and Shfd17122). These artefacts were underlain by sediments dating to 70 ka and capped by upper units dating to the terminal Pleistocene/Holocene transition. Ten stratigraphic units reveal a predominantly fluvial sequence, likely produced from episodes of overbank deposition. This first-stage site report provides the context for the stratified and surface artefacts at and near our sample area, the OSL ages and associations, and the significance of a 50 ka site from the northern Kimberley. Minjiwarra is located at a key interstitial point on the archaeological landscape, which we now describe in greater contextual detail.



Figure 2. The 6m high elevation of Minjiwarra looking north-west. The sediments are increasingly cemented with depth, with a large basal talus and carbonate pavement shown in the foreground. Artefacts are *in situ* in section with a near-continuous scatter of reworked and locally discarded artefacts lying on the pavement (Photo by Marine Benoit).

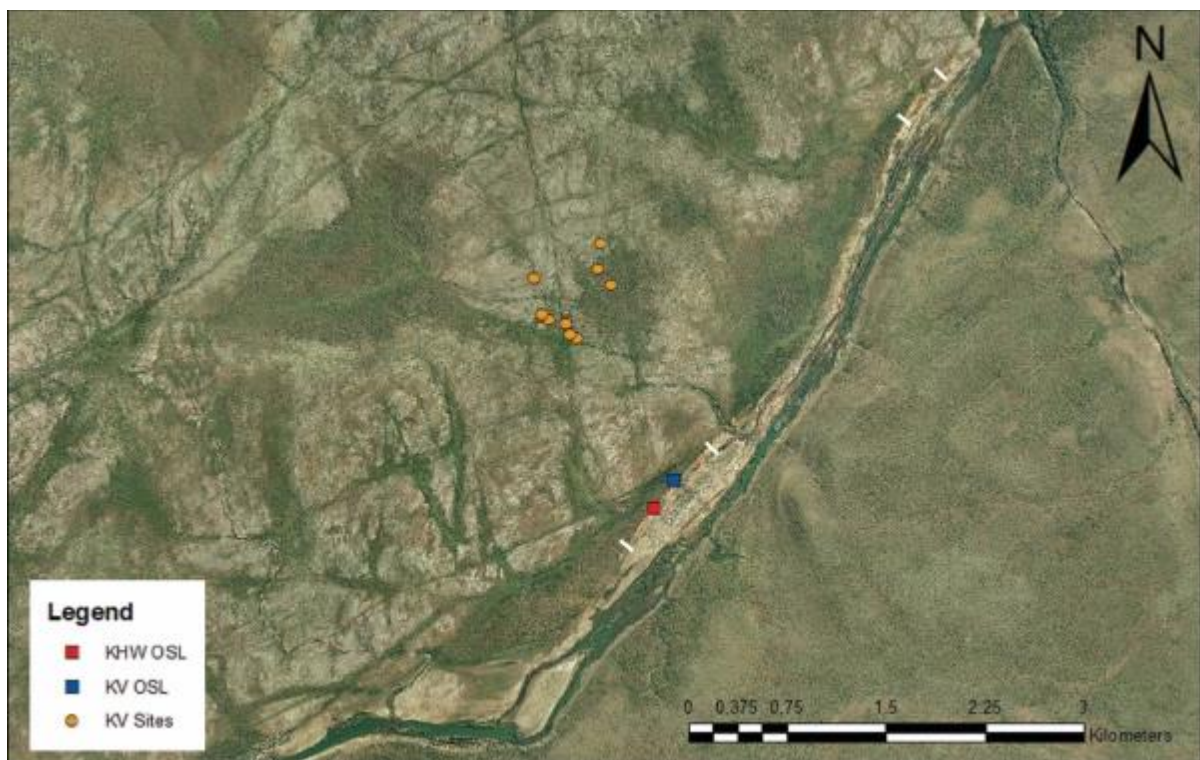


Figure 3. Aerial view of the extent of Minjiwarra along Drysdale River (white bars), location of OSL samples (red – earlier samples by Karl Heinz Wyrwoll; blue – *Kimberley Visions* 2017 samples) and rock art sites with Gwion Gwion and Wandjina motifs to the north-west (orange dots) (ArcMAP 10.5).

Minjiwarra site context

The Drysdale River drains a large catchment of ~26,019 km² representing one of three catchments being surveyed by the *Kimberley Visions* project (Figure 1). Since 2016 the project team has located and recorded 1087 archaeological sites including: rock paintings, engravings, cupules and grooves, stone arrangements, quarries, occupation and ethnographic sites. Minjiwarra is located at the interstice between two rock art regions defined by King Leopold sandstone that extends to the coast immediately west, and Warton sandstone that makes up the inland Carson escarpment 4.5 km to the east. In the former region, we have recorded 30 rock art sites that contain both early Gwion Gwion (also 'Kira kiro') and more recent Wandjina phase rock arts (Figure 4). In the latter region, we have recorded 390 rock art sites where all the known types of Kimberley rock art occur, including types yet to be fully described. We have also conducted 9 excavations in addition to Minjiwarra in this region; the finds from which are currently being analysed as part of doctoral and other research. Most rock art sites have associated artefacts and living areas. However, rock shelter occupation sites seldom have deep, stratified, deposits with all current excavations producing mid- to late Holocene dates (Table 1). Some sites have metal, glass and other historic artefacts in upper units, and possess significance to current Traditional Owners and their immediate ancestors. Although deposits excavated are mid- to late Holocene in age, several of the rock art traditions – such as cupules, Irregular Infill Animal and Gwion Gwion (Figure 4) are currently thought to be Pleistocene in age and are the subject of another ARC Project: *Dating the Aboriginal Rock Art Sequence of the Kimberley in North-West Australia* (LP170100155). We believe it is important to note the abundance and regional presence of earlier phase art and the concomitant lack of excavated Pleistocene-aged deposits (see Figure 4 and Table 1) compared to the Pleistocene deposits in limestone and sedimentary suites dominating the NW and SE Kimberley (see Maloney et al. 2018).

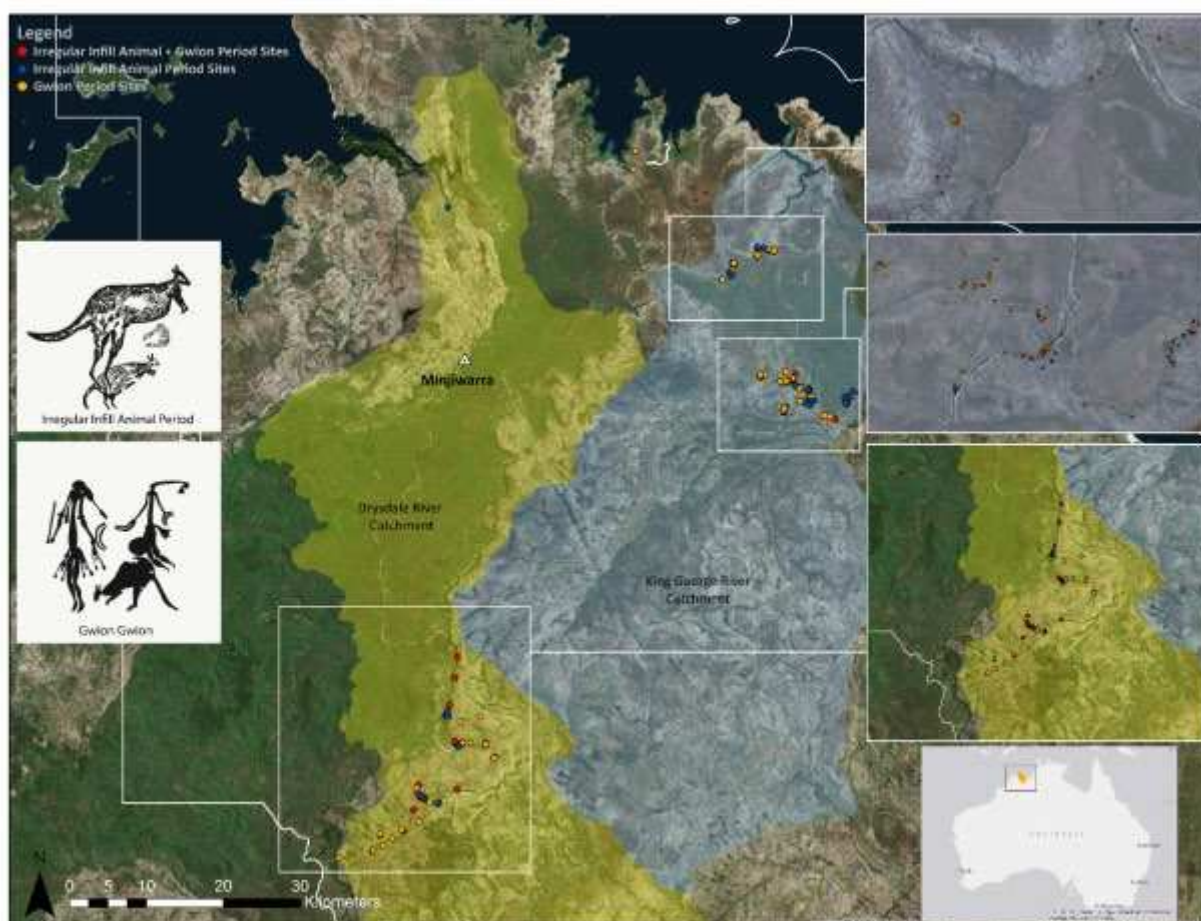


Figure 4. Location of Minjiwarra in relation to early phase rock art located in the Drysdale and King George River catchments.

Table 1. Sites and dates obtained from *Kimberley Visions* project excavations. Calibration was obtained using OxCal v4.3.2 with InterCal13 (DRY104, FOR001, KGR037) and SHCal13 (DRY007, DRY025, KGR128, KGR010) calibration curves.

Site code	Site type	Depth of the deposit	Radiocarbon dates
DRY007	Rock shelter	145 cm	3390 – 3230 cal. BP (Wk47580)
DRY025	Rock shelter	ca. 30 cm	1710 – 1560 cal. BP (Wk47582)
DRY104	Rock shelter	35 cm	5299 – 5038 cal. BP (Wk48208)
FOR001	Rock shelter	108 cm	742 – 782 cal. BP (Wk-44396)
FOR002	Rock shelter	125 cm	No dates available
KGR037	Open site	221 cm	12,710 – 12,570 cal. BP (Wk-44319)
KGR128	Open site	150 cm	1120 – 980 cal. BP (Wk47579)

Despite the absence of Pleistocene deposits in rock shelters (see Table 1), likely due to the slowly eroding nature of the Warton sandstone and different preservation of associated archaeological deposits, two open sites – of which Minjiwarra is the largest – have provided a chronological bridge into the Pleistocene. Table 1 shows basal dates obtained for 8 other sites excavated as part of the *Kimberley Visions* project. These show that Pleistocene deposits are rarely preserved in the area, both in open and rock shelter contexts. This clearly demonstrates the importance of Minjiwarra's rare Pleistocene sequence and the utility of under-researched open contexts in understanding the dynamics of human land use: especially in the earlier periods of human occupation of Sahul. Minjiwarra is situated immediately north (4.5 km) from the Warton Sandstone Carson River Escarpment – and a remarkable geological feature called 'The Finger', where 150 archaeological sites have been recorded in a 15km radius (Figure 4). Some of these sites have potential archaeological deposits of over 1 m in depth and are often heavily imprinted with multi-temporal rock art signatures dominated by Gwion Gwion and Wandjina motifs, including hafted stone motifs. Wandjina motifs occur well to the east of most currently accepted Wandjina distributions in the Kimberley. Interestingly, these sites cluster on top of the Carson Escarpment rather than along the Drysdale river course, where most rock art sites are found. This unexpectedly rich site complex, together with the open sites and predominantly rock shelter derived occupational chronologies, show this human landscape to be enormously complex with distinct archaeological signatures that we are yet to fully disentangle. This complexity continues immediately west of Minjiwarra, where we are beginning to record a new suite of sites in the geologically and topographically distinct King Leopold sandstone which has a more distinct coastal signature (Figure 4).

Returning to Minjiwarra, we surveyed up and down the river, noting another similar but smaller heavily incised, steep landscape feature 2.5 km to the north. While brief mention of these features was made by previous researchers, none had positively identified *in situ* artefacts. OSL samples taken by Wyrwoll from a section 100 m to the SW of our 2017 target area (Figure 3) provided three OSL assays of 134 ka, 115 ka and 37 ka, between 1 – 6 m above the carbonate pavement (Karl-Heinz Wyrwoll pers. comm. 19 August 2017). Walsh (2000) and Morwood (unpublished notes) postulated that the feature is of considerable antiquity, noting an abundance of axe-making debris. Morwood collected six axes, one of which is illustrated in Figure 6, together with an axe we recovered in 2017. The site was first described by Walsh (2000) as a dune. However, this was not supported in our subsequent inspections. While the top stratigraphical unit consists of homogenous aeolian sand, the remaining units are made of sand, silt and clay. The compaction and composition of Units 2 to 10 show layered deposition of indurated and less compacted alluvial sediments, which is consistent with an overbank alluvial geological deposit (Boggs 2012). Indeed, Units 4, 5 and 7 (see Figure 7) show fine alternate beddings of silt and clay, typical of low energy over flooding deposition. The sediments have likely been intermittently deposited by flood waters that have broken through or overtopped the banks of the Drysdale River, leading to different levels of preservation for the sedimentary and archaeological layers.

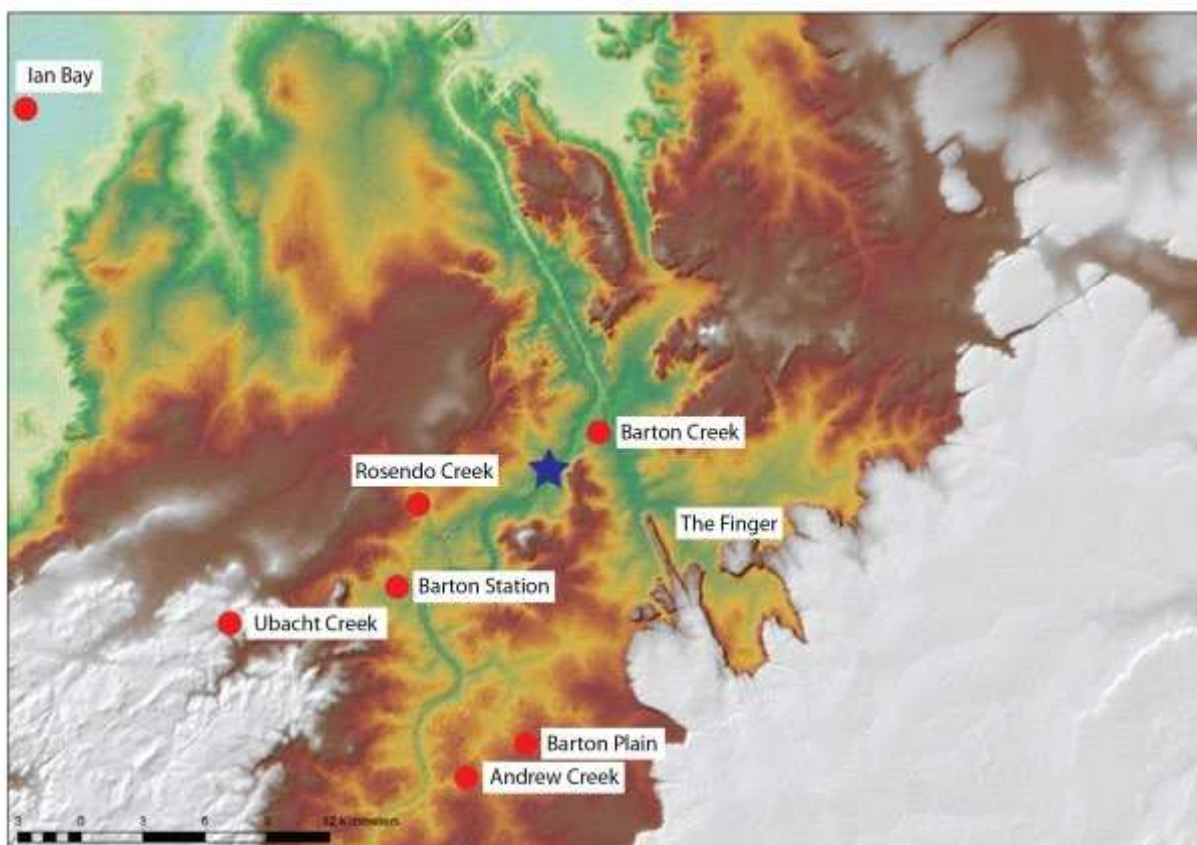


Figure 5. Digital elevation model with Minjiwarra marked by the blue star. The Drysdale River swings northwest along a fault line on the same axis as the uplands of the Warton sandstone escarpment that extends as ‘The Finger’ seen in the lower middle part of this figure. 30 m pixel resolution shading spans 100 m in elevation 20 to 120 m.



Figure 6. Left-hand side shows a bifacially flaked/edge-ground axe made from a river cobble recovered from the “terrace mid-level deposits” of Minjiwarra by M. Morwood in 2004 (drawn by Mark Moore January 2005). Right-hand side is a heavily weathered and patinated, bifacially flaked and edge-ground axe with an ovoid section stem from

Minjiwarra that is similar to a small stemmed axe recovered from Phase 2 (c. 55 ka) at Madjedbebe (Clarkson et al. 2017). (Photo by Peter Veth).

The erosion of some of Minjiwarra's archaeological layers has created a near-continuous scatter of larger igneous, mudstone, quartz and silicified sandstone artefacts on the pavement and down into the river alluvium. This scatter occurs repeatedly in clusters for much of the 1 km length of Minjiwarra with variable assemblage density and composition. In the southwest section, minor rill and slope-wash erosion has exposed formal tools and debitage consistent with late Holocene artefacts, such as pressure-flaked Kimberley points and associated bifacial thinning flakes (see Maloney 2015; Moore 2015). In other sections of the site, pavement artefacts include unidirectional and multidirectional cores, flakes, unifacial points, knapped cobbles and sandstone slabs with one or two flake removals.

OSL Dating: samples and methods

Samples

In order to contextualise these finds chronologically, we identified ten Stratigraphic Units and took 5 OSL samples (see Figure 7). We planned our sampling so as to derive ages for a) Stratigraphic Unit 5 and above, comprising lighter and less cemented sediments predicted to date to the Holocene, and b) Stratigraphic Units 7 – 9, which contained visible *in-situ* artefacts. The later units (8 to 10) are generally more compacted and cemented, with a deep red colour. Detailed description of the units can be found in Figure 7.

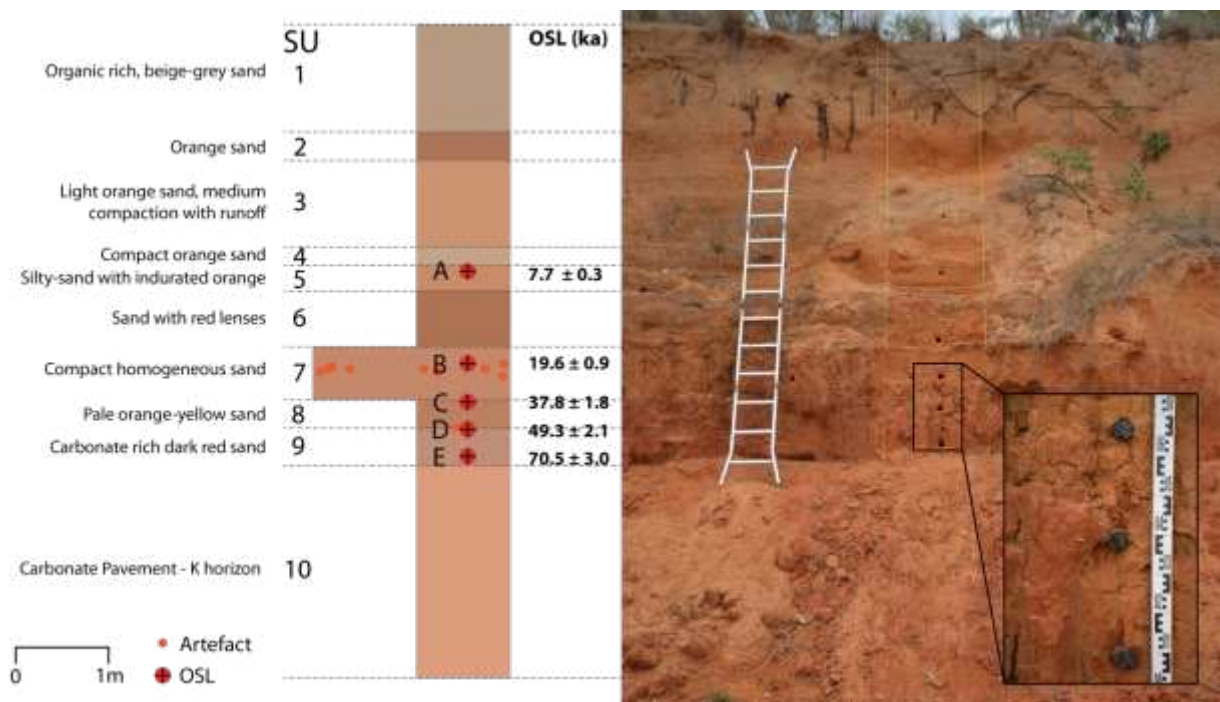


Figure 7. Location of five OSL sample points and results from the Minjiwarra section. The four samples in SUs 9, 8 and 7 are associated with *in situ* artefacts assumed to be Pleistocene, while the sample from SU5 is assessed as Holocene (photo by Marine Benoit).

These five samples were submitted for dating with all luminescence work carried out at the Sheffield Luminescence Laboratory (Tables 2 and 3).

Table 2. Summary of dosimetry related data

Lab Code*	Field Ref	U (PPM)	Th (PPM)	K (%)	Dcosmic ($\mu\text{Gy/a}^{-1}$)	Moisture (%)	Dose rate ($\mu\text{Gy/a}^{-1}$)
Shfd17118	OSL A	1.68	4.4	0.4	139 ± 7	0.8	1278 ± 49
Shfd17119	OSL B	2.10	7.3	0.5	126 ± 6	3.5	1629 ± 62
Shfd17120	OSL C	1.90	5.7	0.5	119 ± 6	2.7	1475 ± 57
Shfd17121	OSL D	2.11	6.9	0.6	114 ± 6	7.5	1613 ± 63
Shfd17122	OSL E	1.78	5.0	0.5	107 ± 5	3.3	1376 ± 54

*All samples: Latitude: 14°12' (S); Longitude: 126°57' (E); Altitude: 55m.

Methods

In order to derive an OSL age, both the palaeodose (D_e ; Gy/ka) and the estimated radiation flux for the sedimentary bodies (Dose Rate; $\mu\text{Gy/a}^{-1}$) need to be determined. For the dose rate, the concentrations of potassium (K), thorium (Th) and uranium (U), the main contributors of dose to sedimentary quartz, were determined in the laboratory by inductively coupled plasma mass spectrometry (ICP) (ICP: Table 2). These were converted to annual dose rates taking into account attenuation factors relating to sediment grain size, density and palaeo-moisture based on present-day values with a ± 3 % error to incorporate fluctuations through time (Table 3). The contribution to dose rates from cosmic sources was calculated using the expression published in Prescott and Hutton (1994).

For palaeodose (D_e) determination, samples quartz in the size range of 125-180 μm were extracted and cleaned as per Bateman and Catt (1996). Prepared grains were mounted as a 5 mm diameter monolayer on 9.6 mm diameter stainless still disks. Samples were measured using a Risø DA-20 luminescence reader with stimulation provided by blue/green LEDs and luminescence detection was through a Hoya U-340 filter. Samples were analysed for their D_e using the single aliquot regenerative (SAR) approach (Murray and Wintle 2003), with the preheat of 240 °C for 10 seconds optimised from a dose recovery preheat plateau test. Each sample possessed good luminescence characteristics with a rapid decay of OSL with stimulation and OSL signals dominated by a fast component.

The D_e replicate distributions of all samples were normally distributed with low levels of scatter ($OD < 20\%$; values given in Table 3). The data shows no indication that either partial bleaching or post-depositional disturbance (Bateman et al. 2003, 2007) has influenced the Minjiwarra samples and therefore the ages should reflect true burial ages. D_e values for age calculations were extracted using the Central Age or Common Age Models (CAM or COM) of Galbraith and Green (1990). Ages are quoted in years from the present day (2018; Table 3).

Table 3. Summary of single grain palaeodose data and ages for Minjiwarra.

Lab Code	Field Ref	Sampling Depth	De (Gy)	Over- dispersion (%)	Age (ka)
Shfd17118	OSL A	2.8	9.85 ± 0.11	5	7.7 ± 0.3
Shfd17119	OSL B	3.6	31.9 ± 0.86	15	19.6 ± 0.9
Shfd17120	OSL C	4.0	55.8 ± 1.67	15	37.8 ± 1.8
Shfd17121	OSL D	4.4	79.4 ± 1.24	21	49.3 ± 2.1
Shfd17122	OSL E	4.9	69.9 ± 1.61	7	70.5 ± 3.0

Stone artefacts and dating associations

A one metre wide column was cleaned back to reveal a clean section, utilising the steep erosion face of the feature and focusing on the largest aggregation of artefacts that were clearly *in-situ* (Figure 8). Systematic surveying of the entire one-kilometre-long feature only located artefacts in primary context within a 30 m band centred on this column section. A significant number of artefacts (c. 50) were in secondary contexts along the lower faces of the alluvial feature often on small peds.



Figure 8. Preparing the column into the exposed section of Minjiwarra. *In-situ* artefacts were recorded in the lower heavily cemented ped unit and eroding from the ledge above this (at chest height of PV standing next to ped bench). The ladder

is secured on the next ledge above and to the apex of the feature (Photo by Sven Ouzman).

The preliminary Minjiwarra stone artefact assemblage described here only includes artefacts that were unequivocally *in-situ* and associated with the OSL dates, as well as surface artefacts which have probably been reworked from the deposits onto the carbonate pavement. The assemblage is small and so only basic observations and metrics are reported here. The definitions for flake, core and tool classes in Tables 4 – 7 follow Holdaway and Stern (2004). It should be noted that ‘tools’ in Table 4 are simply defined as artefacts that retain edge retouch or with evidence for use (i.e. use-wear). ‘Complete tools’ meet the definition for complete flakes (Holdaway and Stern 2004:111) but retain use-wear or retouch. The same is true for distal tools and so on (see Holdaway and Stern 2004). The tool types are detailed further in Table 5. The basic metric attributes for the Minjiwarra artefacts are displayed in Table 4, illustrating that most of the artefacts are large; particularly the silicified sandstone artefacts. This should come as little surprise since silicified sandstone is immediately available as sub-rounded river cobbles. Large flakes, tools and cores could be easily produced from these cobbles for expedient use at Minjiwarra. Both the crystal quartz and igneous artefacts, while few, are also large and their source locations are currently unknown. The same is true for mudstone but, interestingly, there is more variation in the size of these artefacts (Table 4).

Table 4. Basic metric data for the Minjiwarra stone artefact assemblage. Maximum dimensions in millimetres and weight in grams.

Raw Material and Flake Class	No.	Max. Length		Max. Width		Max. Thickness		Weight	
		μ	σ	μ	σ	μ	σ	μ	σ
Crystal Quartz									
Core	1	82.0	-	48.0	-	45.4	-	170.7	-
Igneous									
Complete Split Flake	1	78.4	-	66.4	-	17.3	-	81.5	-
Complete Tool	5	107.7	16.26	82.7	23.97	31.1	2.78	371.4	108.20
Mudstone									
Angular Fragment	1	45.8	-	16.3	-	9.2	-	6.5	-
Broken Flake	1	27.1	-	19.7	-	5.7	-	3.3	-
Complete Flake	3	66.7	20.66	53.2	22.31	16.1	6.13	61.3	64.25
Complete Tool	3	91.0	39.48	50.0	19.00	21.9	13.11	125.6	148.51
Core	4	110.4	23.41	87.2	23.00	55.8	13.59	794.6	653.96
Distal Tool	1	82.6	-	68.2	-	24.1	-	144.9	-
Silicified Sandstone									
Complete Flake	1	121.6	-	92.9	-	24.6	-	283.9	-
Complete Tool	1	188.3	-	157.1	-	37.1	-	1382.0	-
Core	3	136.2	21.52	105.9	9.56	64.8	18.87	1230.3	158.86
Core Fragment	2	98.7	13.17	67.7	16.60	51.6	26.23	357.1	301.93

Table 5 shows tool and core type counts for Minjiwarra. Tools are almost exclusively manufactured using igneous and mudstone material while cores are almost exclusively represented by mudstone and silicified sandstone. A wide variety of cores are present, with little patterning. Igneous tools retain a large proportion of volume (e.g. ground edge axes and

nuclear tools) while mudstone tools generally have a larger proportion of surface area and cutting edge (e.g. points and other bifacial tools; see also Table 4). This likely derives from raw material selection where specific qualities (e.g. toughness versus edge sharpness) required for anticipated tasks were targeted. The tools and cores are not dissimilar to those found throughout the Kimberley where both Pleistocene edge-ground axe and Holocene point technology is well-established (Hiscock et al. 2016; Maloney et al. 2018). It is worth noting that some of these specimens are very weathered and patinated (e.g., Figure 6), which may be an indication of considerable antiquity.

Table 5. The number of tool and core types at Minjiwarra. Test cores refer to cores with only one or two negative flake scars.

Tools and Cores	Crystal Quartz	Igneous	Mudstone	Silicified Sandstone
Tools				
Bifacial Tool	0	0	1	0
Nuclear Tool (Chopper)	0	1	0	1
Ground Edge Axe	0	3	0	0
Unifacial Point	0	0	1	0
Scraper	0	1	2	0
Cores				
Core-Tool	0	0	2	1
Multi-Platform	1	0	1	1
Single Platform	0	0	1	1
Test	0	0	0	2

Table 6 shows the depth of the *in-situ* artefacts recovered from Minjiwarra within and immediately adjacent to the 1m wide section (see Figure 7) and their associated OSL ages. The table demonstrates a clear association between the onset of artefact deposition and OSL samples, suggesting occupation of Minjiwarra and the surrounding landscape from c. 50 ka (49.3 ± 2.1 ka). Two mudstone artefacts and a scraper occur within c. 10cm from OSL D dated to 49.3 ka. The complete edge-ground axe is worthy of note. Occurring in association with sample OSL C (37.8 ± 1.8 ka), it clearly demonstrates the presence of this technology in the Kimberley at this time and is consistent with the 44-49 ka date for a small flake from a similar axe found in the south-west Kimberley (Hiscock et al. 2016). The Minjiwarra complete edge-ground axe specimen is depicted in Figure 9.

Table 6. Depths of OSL samples and in-situ artefacts.

ID	Age (ka)	Type	Material	Depth	Comment
OSL_A	7.7 ± 0.3	-	-	2.80	-
OSL_B	19.6 ± 0.9	-	-	3.60	-
ART_1_12	-	Broken Flake	Mudstone	3.67	-
ART_1_4	-	Angular Fragment	Mudstone	3.68	-
ART_1_5	-	Core	Sil. Sandstone	3.69	Test Core
ART_1_6	-	Complete Tool	Igneous	3.71	Ground-Edge Axe
OSL_C	37.8 ± 1.8	-	-	4.00	-
ART_1_13	-	Complete Tool	Mudstone	4.27	Scraper
ART_1_11	-	-	-	4.29	-

OSL_D	49.3 ± 2.1	Complete Flake	Mudstone	4.40	-
OSL_E	70.5 ± 3.0	-	-	4.90	-



Figure 9. In-situ ground edge axe (ART_1_6). Note grinding striations on the polished surface (upper right lateral margin).

Discussion and Conclusions

The Warton and King Leopold sandstones of the north Kimberley are slow weathering which, combined with the dominant shelter morphologies, may be a factor in the generally shallow deposits noted. Despite concerted attempts since 2013 to locate deeply stratified sites, these are uncommon and, where tested in our 9 excavations to date, have relatively shallow deposits of less than 1 m returning post-LGM dates, mostly in the Mid- to Late Holocene range. This is a valuable record of Holocene and recent occupation but does not generally extend into the Early Holocene and Pleistocene. Fortunately, the *Kimberley Visions* project has also located several large and stratified open sites. At least one of these sites, located on the King George River some 40 km east of Minjiwarra, has several metres of deposit and has returned a late Pleistocene date, and is the focus of Benoit's doctoral research. Minjiwarra is several orders of magnitude larger than these open sites.

A conservative reading of the age of the artefacts recovered from Minjiwarra sees the onset of occupation with whole tools and debitage from 51.4 ka – 47.2 ka. This is a remarkably similar age range, and indeed overlaps with the modelled ages for earliest occupation of Kimberley sites such as Carpenter's Gap 1 and Riwi in the Devonian Reef system (Wood et al. 2016), and

Parnkupirti at Lake Gregory on the Kimberley-desert edge (Veth et al. 2009). It also overlaps with the first dates for occupation at Boodie Cave in Australia's north-west arid coastal zone (Veth et al. 2017), Nawarla Gabarnmang in the Northern Territory (David et al. 2018) and Warratayi from the Flinders Ranges of South Australia (Hamm 2016). Researchers have used a combination of complementary dating techniques on these sites and also integrated genetic sequences from different global laboratories to reach remarkably similar dates for first occupation of the continent (O'Connell et al. 2018; Tobler et al. 2017; Veth 2017). The Northern Territory site of Madjedbebe (Clarkson et al. 2017) at 65 ka is currently the only outlier in this group and has recently been subjected to critiques on different fronts (O'Connell et al. 2018; Veth 2017; response by Clarkson et al. 2018). Traditional rock shelter-based research thus must be broadened to include large fluvial-derived features such as Minjiwarra in the sandstone provinces, as they appear to cover the entire span of potential human occupation. The continued investigation of large open sites in the Kimberley, which necessarily provide a different kind of human occupational record to discrete and geologically constrained shelters, may help flesh out the full record of human occupation for early settlement.

Acknowledgments

This research has been funded by the *Kimberley Visions: Rock Art Style Provinces of North Australia* Australian Research Council Linkage Project (LP150100490) administered by the University of Western Australia. The Lead Chief Investigator is Peter Veth (UWA) with Chief Investigators Sven Ouzman, Martin Porr and Leslie Zubieta (UWA), Bruno David (Monash) and Andy Gleadow (University of Melbourne). Research Associates are Jean-Jacques Delannoy (University of Savoie), Jean-Michelle Geneste (Centre National de la Préhistoire), Cecilia Myers (Dunkeld Pastoral) and Pauline Heaney (Lettuce Create). Partner Organisations include Kimberley Foundation Australia, Dunkeld Pastoral and Department of Biodiversity, Conservation and Attractions. This work has been conducted under research agreements with the Kimberley Land Council and Balanggarra Aboriginal Corporation. The Western Australian Department of Planning, Lands and Heritage (formerly Aboriginal Affairs) provided a s16 permit for our work. The Balanggarra Indigenous Protected Area Rangers and Ian Waina, Scottie Unghango, and Augustine Unghango, as Kwini Traditional Owners, are thanked for their close and ongoing collaboration in all aspects of this work. Rob Ashurst is thanked for his help in preparing samples for OSL dating. We would also like to thank three anonymous reviewers for their comments on the manuscript. Bruno Vindrola is thanked for his help in generating Figure 9.

References

- Bateman, M. D. and J.A. Catt 1996 An absolute chronology for the raised beach and associated deposits at Sewerby, East Yorkshire, England. *Journal of Quaternary Science: Published for the Quaternary Research Association* 11(5):389-395.
- Bateman, M. D., Frederick, C. D., Jaiswal, M. K. and A.K. Singhvi 2003 Investigations into the potential effects of pedoturbation on luminescence dating. *Quaternary Science Reviews* 22(10-13):1169-1176.

Bateman, M. D., Boulter, C. H., Carr, A. S., Frederick, C. D., Peter, D. and M. Wilder 2007 Detecting post-depositional sediment disturbance in sandy deposits using optical luminescence. *Quaternary geochronology* 2(1-4):57-64.

Boggs, S. 2012 *Principles of sedimentology and stratigraphy*. Pearson, Prentice Hall.

Clarkson, C., Jacobs, Z., Marwick, B., Fullagar, R., Wallis, L., Smith, M., Roberts, R.G., Hayes, E., Lowe, K., Carah, X., Florin, S.A., McNeil, J., Cox, D., Arnold, L.J., Hua, Q., Huntley, J., Brand, H.E.A., Manne, T., Fairburn, A., Shulmeister, J., Lyle, L., Salinas, M., Page, M., Connell, K., Park, G., Norman, K., Murphy, T. and C. Pardoe 2017. Human occupation of northern Australia by 65,000 years ago. *Nature* 547(7663):306–310.

Clarkson, C., Roberts, R. G., Jacobs, Z., Marwick, B., Fullagar, R., Arnold, L. J. and Q. Hua 2018 Reply to comments on Clarkson et al. (2017) 'Human occupation of northern Australia by 65,000 years ago'. *Australian Archaeology* 84(1):84-89.

David, B., Delannoy, J. J., Katherine, M., Whear, R., Geneste, J. M. and J. Gollings 2018 Nawarla Gabarnmang. *Landscape Architecture Australia* 158:52.

Galbraith, R. F. and P.F. Green 1990 Estimating the component ages in a finite mixture. *International Journal of Radiation Applications and Instrumentation. Part D. Nuclear Tracks and Radiation Measurements* 17(3):197-206.

Hamm, G. 2016 The evidence of early human life in Australia's arid interior. *Science Education News* 65(4):24.

Hiscock, P., O'Connor, S., Balme, J. and T. Maloney 2016 World's earliest ground-edge axe production coincides with human colonisation of Australia. *Australian Archaeology* 82(1):2–11.

Holdaway, S.J. and N. Stern 2004 *A Record in Stone: the Study of Australia's Flaked Stone Artefacts*. Canberra: Aboriginal Studies Press.

Maloney, T. 2015 Technological Organisation and Points in The Southern Kimberley. Unpublished PhD Thesis, College of Asia and the Pacific, Australian National University, Canberra.

Maloney, T., O'Connor, S., Wood, R., Aplin, K. and J. Balme 2018 Carpenters Gap 1: A 47,000 year old record of indigenous adaptation and innovation. *Quaternary Science Reviews* 191:204–228.

Moore, M. W. 2015. Bifacial flintknapping in the Northwest Kimberley, Western Australia. *Journal of Archaeological Method and Theory* 22(3):913-951.

Murray, A. S. and A.G. Wintle 2003 The single aliquot regenerative dose protocol: potential for improvements in reliability. *Radiation measurements* 37(4-5):377-381.

O'Connell, J. F., Allen, J., Williams, M. A., Williams, A. N., Turney, C. S., Spooner, N. A., Kamminga, J., Brown, G., and A. Cooper, 2018 When did *Homo sapiens* first reach Southeast Asia and Sahul?. *Proceedings of the National Academy of Sciences*, 115(34):8482-8490.

Prescott, J. R. and J.T. Hutton 1994 Cosmic ray contributions to dose rates for luminescence and ESR dating: large depths and long-term time variations. *Radiation measurements* 23(2-3):497-500.

Tobler, R., Rohrlach, A., Soubrier, J., Bover, P., Llamas, B., Tuke, J., Bean, N., Abdullah-Highfold, A., Agius, S., O'Donoghue, A., O'Loughlin, I., Sutton, P., Zilio, F., Walshe, K., Williams, A.N., Turney, C.S.M., Williams, M., Richards, S.M., Mitchell, R.J., Kowal, E., Stephen, J.R., Williams, L., Haak, W. and A. Cooper 2017 Aboriginal mitogenomes reveal 50,000 years of regionalism in Australia. *Nature* 544(7649):180.

Veth, P. 2017 Breaking through the radiocarbon barrier: Madjedbebe and the new chronology for Aboriginal occupation of Australia. *Australian Archaeology* 83(3):165-167.

Veth, P., Smith, M., Bowler, J., Fitzsimmons, K., Williams, A. and P. Hiscock 2009 Excavations at Parnkupirti, Lake Gregory, great sandy desert: OSL ages for occupation before the last glacial maximum. *Australian Archaeology* 69(1):1-10.

Veth, P., Ward, I., Manne, T., Ulm, S., Ditchfield, K., Dortch, J., Hook, F., Petchey, F., Hogg, A., Questiaux, D., Demuro, M., Arnold, L., Spooner, N., Levchenko, V., Skippington, J., Byrne, C., Basgall, M., Zeanah, D., Belton, D., Helmholz, P., Bajkan, S., Bauiley, R., Placzek, C. and P. Kendrick 2017 Early human occupation of a maritime desert, Barrow Island, North-West Australia. *Quaternary Science Reviews* 168:19-29.

Walsh, G. 2000 *Bradshaw Art of the Kimberley*. Takarakka Nowan Kas Publications.

List of Figures

Figure 1. Location of Minjiwarra, northern Kimberley, Drysdale River, Australia.

Figure 2. The 6m high elevation of Minjiwarra looking north-west. The sediments are increasingly cemented with depth, with a large basal talus and carbonate pavement shown in the foreground. Artefacts are *in situ* in section with a near-continuous scatter of reworked and locally discarded artefacts lying on the pavement (Photo by Marine Benoit).

Figure 3. Aerial view of the extent of Minjiwarra along Drysdale River (white bars), location of OSL samples (red – earlier samples by Karl Heinz Wyrwoll; blue – Kimberley Visions 2017 samples) and rock art sites with Gwion Gwion and Wandjina motifs to the north-west (orange dots) (ArcMAP 10.5).

Figure 4. Location of Minjiwarra in relation to early phase rock art located in the Drysdale and King George River catchments.

Figure 5. Digital elevation model with Minjiwarra marked by the blue star. The Drysdale River swings northwest along a fault line on the same axis as the uplands of the Warton sandstone escarpment that extends as ‘The Finger’ seen in the lower middle part of this figure. 30 m pixel resolution shading spans 100 m in elevation 20 to 120 m.

Figure 6. Left-hand side shows a bifacially flaked/edge-ground axe made from a river cobble recovered from the “terrace mid-level deposits” of Minjiwarra by M. Morwood in 2004 (drawn by Mark Moore January 2005). Right-hand side is a heavily weathered and patinated, bifacially flaked and edge-ground axe with an ovoid section stem from Minjiwarra that is similar to a small stemmed axe recovered from Phase 2 (c. 55 ka) at Madjedbebe (Clarkson et al. 2017). (Photo by Peter Veth).

Figure 7. Location of five OSL sample points and results from the Minjiwarra section. The four samples in SUs 9, 8 and 7 are associated with in situ artefacts assumed to be Pleistocene, while the sample from SU5 is assessed as Holocene (photo by Marine Benoit).

Figure 8. Preparing the column into the exposed section of Minjiwarra. In-situ artefacts were recorded in the lower heavily cemented ped unit and eroding from the ledge above this (at chest height of PV standing next to ped bench). The ladder is secured on the next ledge above and to the apex of the feature (Photo by Sven Ouzman).

Figure 9. In-situ ground edge axe (ART_1_6). Note grinding striations on the polished surface (upper right lateral margin).

List of Tables

Table 1. Sites and dates obtained from *Kimberley Visions* project excavations. Calibration was obtained using OxCal v4.3.2 with InterCal13 (DRY104, FOR001, KGR037) and SHCal13 (DRY007, DRY025, KGR128, KGR010) calibration curves.

Table 2. Summary of dosimetry related data

Table 3. Summary of single grain palaeodose data and ages for Minjiwarra.

Table 4. Basic metric data for the Minjiwarra stone artefact assemblage. Maximum dimensions in millimetres and weight in grams.

Table 5. The number of tool and core types at Minjiwarra. Test cores refer to cores with only one or two negative flake scars.

Table 6. Depths of OSL samples and *in-situ* artefacts.