

This is a repository copy of *Low-density hydrodynamic optical-field-ionized plasma channels generated with an axicon lens*.

White Rose Research Online URL for this paper:

<https://eprints.whiterose.ac.uk/158786/>

Version: Published Version

Article:

Shaloo, R. J., Arran, C. orcid.org/0000-0002-8644-8118, Picksley, A. et al. (9 more authors) (2019) Low-density hydrodynamic optical-field-ionized plasma channels generated with an axicon lens. *Physical Review Accelerators and Beams*. 041302. ISSN 2469-9888

<https://doi.org/10.1103/PhysRevAccelBeams.22.041302>

Reuse

This article is distributed under the terms of the Creative Commons Attribution (CC BY) licence. This licence allows you to distribute, remix, tweak, and build upon the work, even commercially, as long as you credit the authors for the original work. More information and the full terms of the licence here:

<https://creativecommons.org/licenses/>

Takedown

If you consider content in White Rose Research Online to be in breach of UK law, please notify us by emailing eprints@whiterose.ac.uk including the URL of the record and the reason for the withdrawal request.

Low-density hydrodynamic optical-field-ionized plasma channels generated with an axicon lens

R. J. Shalloo,^{1,*} C. Arran,^{1,†} A. Picksley,¹ A. von Boetticher,¹ L. Corner,² J. Holloway,¹ G. Hine,^{3,‡} J. Jonnerby,¹ H. M. Milchberg,³ C. Thornton,⁴ R. Walczak,¹ and S. M. Hooker^{1,§}

¹*John Adams Institute for Accelerator Science and Department of Physics, University of Oxford, Denys Wilkinson Building, Keble Road, Oxford OX1 3RH, United Kingdom*

²*Cockcroft Institute for Accelerator Science and Technology, School of Engineering, The Quadrangle, University of Liverpool, Brownlow Hill, Liverpool L69 3GH, United Kingdom*

³*Institute for Research in Electronics and Applied Physics, University of Maryland, College Park, Maryland 20742, USA*

⁴*Central Laser Facility, STFC Rutherford Appleton Laboratory, Didcot OX11 0QX, United Kingdom*



(Received 14 February 2019; published 10 April 2019)

We demonstrate optical guiding of high-intensity laser pulses in long, low-density hydrodynamic optical-field-ionized (HOFI) plasma channels. An axicon lens is used to generate HOFI plasma channels with on-axis electron densities as low as $n_e(0) = 1.5 \times 10^{17} \text{ cm}^{-3}$ and matched spot sizes in the range $20 \text{ } \mu\text{m} \lesssim W_M \lesssim 40 \text{ } \mu\text{m}$. Control of these channel parameters via adjustment of the initial cell pressure and the delay after the arrival of the channel-forming pulse is demonstrated. For laser pulses with a peak axial intensity of $4 \times 10^{17} \text{ W cm}^{-2}$, highly reproducible, high-quality guiding over more than 14 Rayleigh ranges is achieved at a pulse repetition rate of 5 Hz, limited by the available channel-forming laser and vacuum pumping system. Plasma channels of this type would seem to be well suited to multi-GeV laser wakefield accelerators operating in the quasilinear regime.

DOI: [10.1103/PhysRevAccelBeams.22.041302](https://doi.org/10.1103/PhysRevAccelBeams.22.041302)

Many applications of high-intensity laser-plasma interactions require the propagation of high-intensity laser pulses through plasmas which are orders of magnitude longer than the Rayleigh range. One example of particular current interest is the laser wakefield accelerator (LWFA) [1], in which a laser pulse with an intensity of the order of $10^{18} \text{ W cm}^{-2}$ propagates through a plasma, driving a trailing density wave. The electric fields generated within this plasma wave are of the order of the wave-breaking field $E_0 = m_e \omega_p c / e$, where $\omega_p = (n_e e^2 / m_e \epsilon_0)^{1/2}$ and n_e is the electron density [2,3]. For plasma densities in the range $n_e = 10^{17} - 10^{18} \text{ cm}^{-3}$, $E_0 \approx 30\text{--}100 \text{ GV m}^{-1}$, which is

several orders of magnitude higher than the fields generated in radio-frequency machines.

Plasma accelerators can drive compact sources of femtosecond-duration [4–6] radiation via betatron emission [7,8], undulator radiation [9,10], and Thomson scattering [11–13], with many potential applications in ultrafast science. In the longer term, they could provide a building block for future high-energy particle colliders [14].

For LWFA's operating in the quasilinear regime [2], the energy gain per stage varies as $W \propto E_0 L_{\text{acc}} \propto 1/n_e$, and the required length of the stage varies as $L_{\text{acc}} \propto 1/n_e^{3/2}$. Hence, reaching higher energy gains requires the drive laser to propagate over longer lengths of lower-density plasma. To date, the highest reported electron energy generated in a LWFA is 7.8 GeV, which was achieved by guiding intense laser pulses through a 200-mm-long plasma channel with an axial electron density of $2.7 \times 10^{17} \text{ cm}^{-3}$ [15].

Laser-plasma accelerators providing 10 GeV energy gain per stage will require laser guiding through hundreds of millimeters of plasma of electron density $n_e \approx 10^{17} \text{ cm}^{-3}$ [16,17]. Furthermore, for many of the applications identified above, it will be necessary to operate at pulse repetition rates f_{rep} , several orders of magnitude above the few hertz typical of today's GeV-scale LWFA's.

To date, the workhorse waveguide for LWFA's has been the capillary discharge waveguide [18,19]. Capillary discharge waveguides have generated plasma channels up to 150 mm

*Present address: The John Adams Institute for Accelerator Science, Blackett Laboratory, Imperial College London, London SW7 2AZ, United Kingdom.

†Present address: York Plasma Institute, Department of Physics, University of York, York YO10 5DD, United Kingdom.

‡Present address: Oak Ridge National Laboratory, Oak Ridge, Tennessee 37831, USA.

§simon.hooker@physics.ox.ac.uk

Published by the American Physical Society under the terms of the *Creative Commons Attribution 4.0 International* license. Further distribution of this work must maintain attribution to the author(s) and the published article's title, journal citation, and DOI.

long [20], with on-axis densities as low as approximately $3 \times 10^{17} \text{ cm}^{-3}$. Electrical operation at $f_{\text{rep}} = 1 \text{ kHz}$ has been reported [21], but high-intensity guiding at such high repetition rates has yet to be demonstrated. In recent work, an additional nanosecond-duration laser pulse was used to heat and deepen the plasma channel through inverse bremsstrahlung heating [22]. Since in these devices the plasma channel is formed within a capillary structure, their application to future, high-repetition-rate LWFAs will require the development of techniques to ensure that laser damage of the capillary discharge structure is avoided.

We recently suggested [23] that hydrodynamic optical-field-ionized (HOFI) plasma channels could meet the challenges posed by future low-density, high-repetition-rate plasma accelerator stages. Since HOFI channels are isolated from any physical structure, they are immune to laser damage and could therefore be operated at high repetition rates for extended periods.

In a HOFI channel, a column of plasma is generated by optical field ionization; this expands hydrodynamically into the surrounding gas, driving a radial shock wave and forming a plasma channel along the axis of the plasma column. The concept is closely related to the hydrodynamic channels developed by Milchberg *et al.* [24,25]; however, in a HOFI channel, the axial density can be much lower, since the plasma is heated by OFI rather than by laser-driven collisions. Our numerical simulations showed that an axicon lens could be used to generate long plasma channels with on-axis densities of the order of $n_e(0) \approx [10^{17}] \text{ cm}^{-3}$, matched spot sizes around $W_M \approx 40 \mu\text{m}$, and attenuation lengths (the length over which the intensity of a guided beam would drop by a factor of e) of the order of $L_{\text{att}} \sim 1 \text{ m}$ [23]. Simulations show that only 0.1 mJ of energy in the channel-forming laser is required per millimeter of HOFI channel, making realistic the generation of channels tens of centimeters long. The simulations were confirmed by experiments which showed the formation of short plasma channels generated at the focus of a *spherical* lens. We note that Lemos *et al.* [26,27] have generated short $n_e(0) \approx 1 \times 10^{18} \text{ cm}^{-3}$ HOFI channels produced by a spherical lens and have demonstrated guiding of low-intensity ($1 \times 10^{15} \text{ W cm}^{-2}$) laser pulses over four Rayleigh ranges [28].

In this paper, we demonstrate, for the first time, the formation of long, low-density HOFI channels by an axicon lens. We use longitudinal and transverse interferometry to characterize the plasma dynamics and show the formation of plasma channels with axial electron densities as low as $n_e(0) = 1.5 \times 10^{17} \text{ cm}^{-3}$ and matched spot sizes in the range $20 \mu\text{m} \lesssim W_M \lesssim 40 \mu\text{m}$. These channel parameters can be controlled by adjusting the initial cell pressure and the delay after the initial plasma formation. We demonstrate highly reproducible, high-quality guiding over more than 14 Rayleigh ranges of laser pulses with a peak intensity of $4 \times 10^{17} \text{ W cm}^{-2}$ at a repetition rate of 5 Hz (limited by the repetition rate of the laser system).

The experiments were performed with the Astra-Gemini TA2 Ti:sapphire laser at the Rutherford Appleton Laboratory, United Kingdom, using the arrangement shown in Fig. 1 (see Supplemental Material [29] for further details). For these experiments, the laser provided linearly polarized, 430 mJ, 45 fs pulses at a central wavelength of 810 nm, in a beam of approximately 55 mm diameter.

An annular beam—the “channel-forming” beam—was apodized from the main beam by reflection from a mirror with a hole (HM1) and used to generate the HOFI channels. This beam was passed through a quarter-wave plate (QWP) and directed to a retroreflecting delay stage (DS1) and then to a fused silica axicon lens of 5.6° base angle (corresponding to an approach angle of 2.5°). The beam focused by the axicon was directed into the target gas cell via a mirror (HM2) in which a hole had been drilled.

The beam transmitted through the hole in HM1 (the “guided beam”) was directed to a second retroreflecting delay stage (DS2), reflected from an off-axis paraboloid (OAP) of $f = 750 \text{ mm}$ focal length, and directed through HM2, and into the gas cell, by reflection from a dielectric mirror (DM1). The Rayleigh range of the guided beam was determined to be $z_R = (1.1 \pm 0.4) \text{ mm}$ from measurements of the longitudinal variation of the transverse size of the beam.

A separately compressed probe beam was used for longitudinal and transverse interferometry. A 405 nm longitudinal probe beam was generated by frequency doubling and directed into the gas cell by reflection from a dielectric mirror (DM2) and transmission through DM1. The remaining 810 nm beam formed a transverse probe beam.

Hydrogen gas entered the variable-length gas cell (shown in Fig. 1) via a 4 mm inner diameter pipe and left via a pair of coaxially mounted stainless steel pinholes. The diameter of the front pinhole was $1500 \mu\text{m}$, to allow coupling in of the axicon beam, and that of the rear pinhole was $750 \mu\text{m}$.

The beams leaving the gas cell longitudinally were reflected from a retroreflecting delay stage (DS3) and collimated by an achromatic lens ($L1$) which acted as the primary lens of two Keplerian telescopes, one each for the 810 and 405 nm beams. The object plane of the telescopes, i.e., the front focal plane of $L1$, could be varied by adjusting DS3.

On leaving the vacuum chamber, the beams were separated by a dichroic mirror. The 405 and 810 nm beams were imaged by their respective secondary lenses and magnified onto a camera by $5\times$ and $10\times$ microscope objectives, respectively. For the 405 nm arm, a folded-wave, Michelson interferometer was placed within the telescope.

The 810 nm transverse probe beam was imaged onto a camera by a third Keplerian telescope, the primary lens of which ($L2$) was mounted on a stage (DS4) to allow accurate

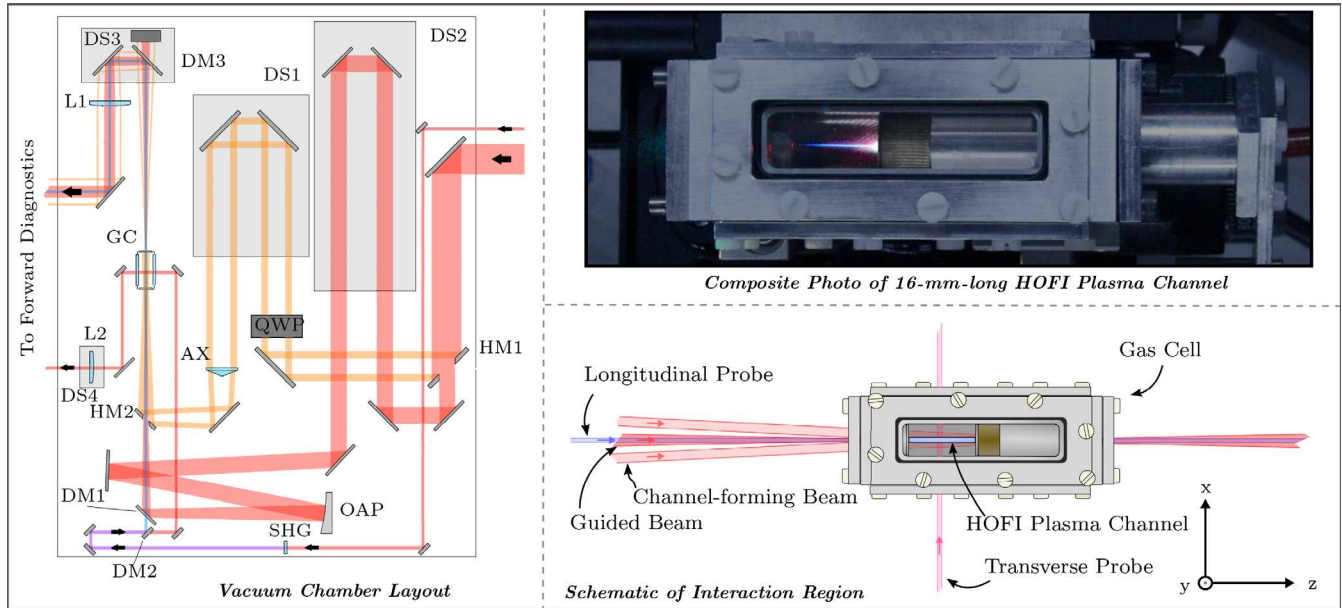


FIG. 1. Left: Experimental layout: HM1 and HM2 (mirrors with central holes), DM1 (810 nm:405 nm R:T dichroic), DM2 and DM3 (405 nm:810 nm R:T dichroic mirrors), OAP ($f/25$ off-axis paraboloid), AX (refractive axicon), SHG (second-harmonic generating crystal), QWP (quarter-wave plate), L1 (achromatic lens $f = 500$ mm), L2 (planoconvex lens $f = 250$ mm), and GC (gas cell). Top right: Photograph of the 16 mm HOFI plasma channel. A composite of an image with chamber lights on and no plasma, together with an image of the plasma with the chamber lights off. Bottom right: Schematic of the interaction region showing the coupling of the four beam lines to the plasma source.

imaging of the channel axis. An interferogram was formed by a folded-wave, Mach-Zehnder interferometer located within the telescope.

Figure 2 demonstrates the guiding of pulses with a peak input axial intensity of $4 \times 10^{17} \text{ W cm}^{-2}$ in a 16-mm-long HOFI channel produced for an initial cell pressure of $P = 60$ mbar after a delay $\tau = 1.5$ ns between the arrival of the channel-forming pulse and the guided pulse. The transmitted transverse fluence profile of the guided beam measured at the channel exit (b) closely resembles that of the input beam (a), although it is very slightly elliptical. The orientation and degree of ellipticity was found to vary slightly with each shot, which is consistent with a shot-to-shot variation of the mode coupling arising from jitter in the transverse profile and pointing of the guided beam. To account for the slight ellipticity in the beam profile, the $D4\sigma$ spot size of the transmitted beam was calculated from the average of the spot size along the principal axes of the transmitted beam. The on-axis density of the channel was found from the interferometric measurements described below to be $(3.6 \pm 0.9) \times 10^{17} \text{ cm}^{-3}$. In order to demonstrate the shot-to-shot stability of the HOFI channels, and to illustrate the potential for high-repetition-rate operation, the transverse intensity profiles of the guided beam were recorded for 485 consecutive shots, as summarized in Figs. 2(c)–2(e). These data were recorded in $f_{\text{rep}} = 5$ Hz bursts of approximately 12 shots every 40 s, with free-flowing hydrogen gas during each burst. The repetition rate was that of the laser system, and the duration and cadence

of the bursts were limited by the available vacuum pumps. The mean spot size of the transmitted beams was found to be $(22.8 \pm 4.6) \mu\text{m}$, where the uncertainty is the root-mean-square (rms) value over 485 shots. The rms variation in the position of the center of the transmitted beam was $14.1 \mu\text{m}$, which is approximately twice that of the input beam. The results shown in Fig. 2 demonstrate clearly the ability of HOFI channels to provide repeatable, high-quality guiding of an intense beam over more than 14 Rayleigh ranges, with axial densities in the 10^{17} cm^{-3} range. The total energy transmission of the channel was found to lie in the 40%–60% range. For the conditions for which the transverse intensity profile of the guided beam was most stable, an energy throughput of $(46 \pm 2)\%$ was recorded. Further work will be required to determine the relative roles of mode coupling and transmission losses in determining the total energy transmission.

The HOFI channels were characterized by longitudinal and transverse interferometry in short (2–4 mm) and long (16 mm) cells, respectively. Plasma channels were observed with both longitudinal and transverse interferometry, and the transverse phase profiles obtained were found to be consistent. For the longitudinal measurements, the plumes of gas emerging from the cell pinholes cause an unknown longitudinal variation of the plasma density; this introduces some uncertainty in the deduced axial electron density, although the shape of the transverse electron density profile is expected to be representative of the channel profile. Quantitative measurements of the electron density profiles

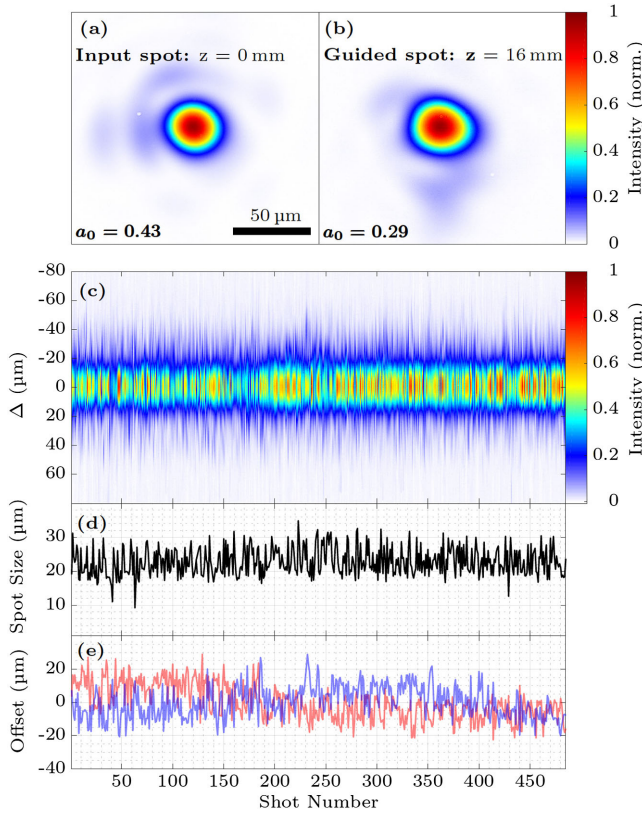


FIG. 2. Transverse fluence profiles of the guided laser pulse at (a) the entrance and (b) the exit of a 16-mm-long HOFI channel, at $\tau = 1.5$ ns. (c) shows, for each shot, the average of the horizontal and vertical fluence profiles through the center of mass; the coordinate Δ has its origin at the center of mass. In (d), the $D4\sigma$ spot size [30] of the transmitted beam (averaged along the principal axes of the spot) is shown for each of the 485 shots; (e) shows the vertical (blue) and horizontal (red) offsets of the spot center. In (a)–(c), the peak fluence has been normalized to the highest value in each plot.

of the channels were therefore obtained from the transverse measurements, as described below.

Both the transverse and longitudinal interferometry showed that the plasma channels had a slight azimuthal asymmetry (see also Supplemental Material [29]), which we attribute to asymmetries observed in the near-field profile of the channel-forming beam. This asymmetry did not hinder channel formation—as evident from the observation of high-quality guiding—but it did mean that the transverse electron density profile could not reliably be deduced from the transverse interferometric data by the usual Abel inversion procedure.

The transverse data were analyzed as follows (see Supplemental Material [29] for further details). It was assumed that the transverse electron density profile $n_e(x, y)$ could be written as a superposition of a finite number of basis functions. For each trial superposition, integration along the x axis yielded the expected phase $\phi_{\text{trial}}(y)$ imprinted on a transverse probe beam; this was fitted to

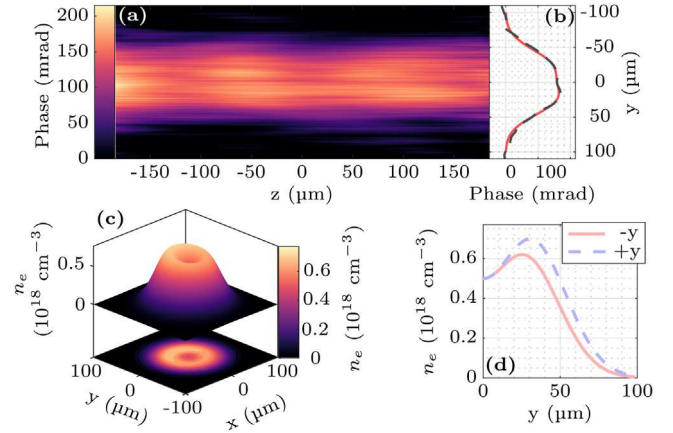


FIG. 3. Transverse interferometric measurements of HOFI channels for an initial cell pressure of $P = 80$ mbar and delay $\tau = 1.5$ ns. (a) shows the measured transverse phase map of the channel, while (b) shows the longitudinally averaged phase (dashed gray line) and a lineout from the transverse phase fitting procedure described in the text (solid red line). The lower panel shows, for the retrieved electron density profile, (c) a surface and contour plot of the retrieved electron density and (d) lineouts along the positive and negative portions of the y axis.

the measured transverse phase $\phi_{\text{meas}}(y)$ to yield $n_e(x, y)$. We used a basis set comprising the square modulus of Laguerre-Gaussian functions, since this can generate both guiding and nonguiding transverse profiles and ensure that the retrieved electron density is positive. Asymmetry was introduced by allowing the coordinates of the center position of the modes to be complex [31]. Tests with simulated data showed that this procedure could reliably reconstruct the transverse electron density profiles of plasma columns with both guiding and nonguiding transverse profiles (see Supplemental Material [29]). Good agreement with $\phi_{\text{meas}}(y)$, with a reduced chi squared of the order of unity, was typically achieved for a superposition of modes with radial index $m = 0$ and azimuthal indices $n \leq 3$.

Figure 3 shows an example of the analysis of the transverse interferometry data shown in (a). The measured phase averaged along the channel axis z , $\phi_{\text{meas}}(y)$, is shown in (b), together with the fit to this lineout obtained from the analysis. It can be seen that the measured and fitted transverse phase profiles are in very close agreement. The retrieved electron density profile $n_e(x, y)$ is plotted in Figs. 3(c) and 3(d), showing clearly the formation of a channel, with a slight azimuthal asymmetry. This asymmetry was found to be small; for the data shown in Figs. 3 and 4, the fractional azimuthal variation in density at $r = W_M$ was between 4% and 11%.

Figure 4(a) presents the temporal evolution of the rotationally averaged, retrieved electron density profiles for $P = 120$ mbar, demonstrating the formation of a plasma channel over a few nanoseconds. The on-axis density and matched spot size of the plasma channel can be controlled by adjusting the cell pressure, as shown in Figs. 4(b)–4(d).

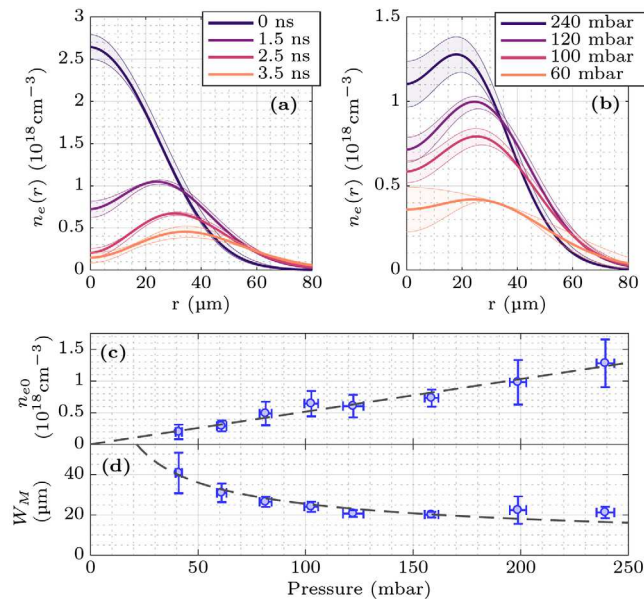


FIG. 4. Variation of the rotationally averaged radial electron density profile $n_e(r)$ of the plasma channel with (a) delay τ , for $P = 120 \text{ mbar}$, and (b) initial cell pressure P , for $\tau = 1.5 \text{ ns}$. In (a) and (b), the solid line shows the mean value, and the shaded region the standard error, obtained from averaging typically five shots. Also shown are the variation with P , for $\tau = 1.5 \text{ ns}$ of (c) the on-axis density $n_e(0)$, together with a linear fit, and (d) the matched spot size W_M , together with a fit to $W_M \propto P^{-0.5}$.

The matched spot size was calculated from a parabolic fit to the channel profile between the origin and the peak density of the shock; this procedure was found to be in good agreement with calculations of the matched spot size of the lowest-order mode calculated by a Helmholtz code [32]. It can be seen that in these experiments plasma channels with on-axis densities as low as $1.5 \times 10^{17} \text{ cm}^{-3}$ were observed, with matched spot sizes of approximately $40 \mu\text{m}$. As previously observed for HOPI channels generated with a spherical lens [23], for a fixed delay τ the matched spot size decreases with the cell pressure. The on-axis density is measured to be approximately proportional to the initial cell pressure P , and hence the plasma wavelength on axis varies as $\lambda_p \propto P^{-0.5}$. A fit to the matched spot size then shows that under these conditions $W_M \approx (0.55 \pm 0.05)\lambda_p$. This scaling of the matched spot size with density is ideal for LWFAs operating in the quasilinear regime, which require $\frac{1}{2}\lambda_p \lesssim W_M \lesssim \lambda_p$ to avoid relativistic self-focusing and reduced group velocity [17].

In summary, we used an axicon lens to generate long (16 mm), low-density [$n_e(0) < 1 \times 10^{18} \text{ cm}^{-3}$] hydrodynamic optical-field-ionized plasma channels for the first time. Plasma channels were generated with axial densities as low as $n_e(0) = 1.5 \times 10^{17} \text{ cm}^{-3}$ and matched spot sizes in the range $20 \mu\text{m} \lesssim W_M \lesssim 40 \mu\text{m}$; these channel parameters could be controlled by adjusting the initial cell pressure and the delay τ after the arrival of the channel-forming pulse.

Highly reproducible, high-quality guiding of laser pulses with a peak axial intensity of $4 \times 10^{17} \text{ W cm}^{-2}$ was demonstrated over more than 14 Rayleigh ranges at a pulse repetition rate of 5 Hz, limited by the laser system.

It is worth noting that in this work only 0.5–0.8 mJ of channel-forming laser energy was required per millimeter of channel, more than an order of magnitude less than for channels formed with a spherical lens and within a factor of 5 of that predicted by simulations [23]. We note that with a suitable gas cell or long gas jet the axicon used in this work could generate plasma channels up to 570 mm long.

The work described here confirms the potential for HOPI channels to operate as freestanding plasma channels with axial densities in the 10^{17} cm^{-3} range, with matched spot sizes ideally suited to LWFAs operating in the quasilinear regime, with lengths of hundreds of millimeters, and with the possibility of operation at high repetition rates for extended periods [23]. Plasma channels with these characteristics would be an ideal medium in which to drive high-repetition-rate, multi-GeV energy gain, meter-scale plasma stages suitable for compact light sources and possible future TeV colliders [33].

This work was supported by the United Kingdom Science and Technology Facilities Council (STFC UK) [Grants No. ST/J002011/1, No. ST/P002048/1, No. ST/M50371X/1, No. ST/N504233/1, and No. ST/R505006/1]; the Engineering and Physical Sciences Research Council [Studentship No. EP/N509711/1]; and the Helmholtz Association of German Research Centres [Grant No. VH-VI-503]. This material is based upon work supported by the Air Force Office of Scientific Research (AFOSR) under Grants No. FA8655-13-1-2141 and No. FA9550-18-1-7005. This work was supported by the European Union's Horizon 2020 research and innovation program under Grant Agreement No. 653782. G. H. and H. M. M. were supported by the U.S. Department of Energy (Grant No. DESC0015516), Department of Homeland Security (Grant No. 2016DN077ARI104), National Science Foundation (Grant No. PHY1619582), and AFOSR (Grants No. FA9550-16-10121 and No. FA9550-16-10284).

- [1] T. Tajima and J. M. Dawson, Laser Electron Accelerator, *Phys. Rev. Lett.* **43**, 267 (1979).
- [2] E. Esarey, C. B. Schroeder, and W. P. Leemans, Physics of laser-driven plasma-based electron accelerators, *Rev. Mod. Phys.* **81**, 1229 (2009).
- [3] S. M. Hooker, Developments in laser-driven plasma accelerators, *Nat. Photonics* **7**, 775 (2013).
- [4] A. Buck, M. Nicolai, K. Schmid, C. M. S. Sears, A. Sävert, J. M. Mikhailova, F. Krausz, M. C. Kaluza, and L. Veisz, Real-time observation of laser-driven electron acceleration, *Nat. Phys.* **7**, 543 (2011).
- [5] O. Lundh, J. Lim, C. Rechatin, L. Ammoura, A. Ben-Ismaïl, X. Davoine, G. Gallot, J.-P. Goddet, E. Lefebvre, V. Malka,

- and J. Faure, Few femtosecond, few kiloampere electron bunch produced by a laser-plasma accelerator, *Nat. Phys.* **7**, 219 (2011).
- [6] M. Heigoldt, A. Popp, K. Khrennikov, J. Wenz, S.-W. Chou, S. Karsch, S. I. Bajlekov, S. M. Hooker, and B. Schmidt, Temporal evolution of longitudinal bunch profile in a laser wakefield accelerator, *Phys. Rev. ST Accel. Beams* **18**, 121302 (2015).
- [7] S. Kneip *et al.*, Bright spatially coherent synchrotron X-rays from a table-top source, *Nat. Phys.* **6**, 980 (2010).
- [8] S. Cipiccia *et al.*, Gamma-rays from harmonically resonant betatron oscillations in a plasma wake, *Nat. Phys.* **7**, 867 (2011).
- [9] H.-P. Schlenvoigt, K. Haupt, A. Debus, F. Budde, O. Jackel, S. Pfotenhauer, H. Schworer, E. Rohwer, J. G. Gallacher, E. Brunetti, R. P. Shanks, S. M. Wiggins, and D. A. Jaroszynski, A compact synchrotron radiation source driven by a laser-plasma wakefield accelerator, *Nat. Phys.* **4**, 130 (2008).
- [10] M. Fuchs, R. Weingartner, A. Popp, Z. Major, S. Becker, J. Osterhoff, I. Cortrie, B. Zeitler, R. Hoerlein, G. D. Tsakiris, U. Schramm, T. P. Rowlands-Rees, S. M. Hooker, D. Habs, F. Krausz, S. Karsch, and F. Gruener, Laser-driven soft-X-ray undulator source, *Nat. Phys.* **5**, 826 (2009).
- [11] K. T. Phuoc, S. Corde, C. Thauray, V. Malka, A. Tafzi, J.-P. Goddet, R. C. Shah, S. Sebban, and A. Rousse, All-optical Compton gamma-ray source, *Nat. Photonics* **6**, 308 (2012).
- [12] N. D. Powers, I. Ghebregziabher, G. Golovin, C. Liu, S. Chen, S. Banerjee, J. Zhang, and D. P. Umstadter, Quasimonoegetic and tunable X-rays from a laser-driven Compton light source, *Nat. Photonics* **8**, 28 (2014).
- [13] K. Khrennikov, J. Wenz, A. Buck, J. Xu, M. Heigoldt, L. Veisz, and S. Karsch, Tunable All-Optical Quasimonochromatic Thomson X-Ray Source in the Nonlinear Regime, *Phys. Rev. Lett.* **114**, 195003 (2015).
- [14] W. Leemans and E. Esarey, Laser-driven plasma-wave electron accelerators, *Phys. Today* **62**, No. 3, 44 (2009).
- [15] A. J. Gonsalves, K. Nakamura, J. Daniels, C. Benedetti, C. Pieronek, T. C. H. de Raadt, S. Steinke, J. H. Bin, S. S. Bulanov, J. van Tilborg, C. G. R. Geddes, C. B. Schroeder, C. Toth, E. Esarey, K. Swanson, L. Fan-Chiang, G. Bagdasarov, N. Bobrova, V. Gasilov, G. Korn, P. Sasorov, and W. P. Leemans, Petawatt Laser Guiding and Electron Beam Acceleration to 8 GeV in a Laser-Heated Capillary Discharge Waveguide, *Phys. Rev. Lett.* **122**, 084801 (2019).
- [16] B. Cros, T. Audet, S. M. Hooker, P. Koester, P. Tomassini, L. Labate, K. Poder, and Z. Najmudin, The European Plasma Research Accelerator with eXcellence in Applications (EuPRAXIA), Technical Report MS 3.1, 2017.
- [17] W. P. Leemans, R. Duarte, E. Esarey, S. Fournier, C. G. R. Geddes, D. Lockhart, C. B. Schroeder, C. Toth, J. L. Vay, and S. Zimmermann, The BErkeley Lab Laser Accelerator (BELLA): A 10 GeV laser plasma accelerator, *AIP Conf. Proc.* **1299**, 3 (2010).
- [18] D. J. Spence and S. M. Hooker, *Phys. Rev. E* **63**, 015401 (2000).
- [19] A. Butler, D. J. Spence, and S. M. Hooker, Guiding of High-Intensity Laser Pulses with a Hydrogen-Filled Capillary Discharge Waveguide, *Phys. Rev. Lett.* **89**, 185003 (2002).
- [20] J. van Tilborg, A. J. Gonsalves, E. H. Esarey, C. B. Schroeder, and W. P. Leemans, Density characterization of discharged gas-filled capillaries through common-path two-color spectral-domain interferometry, *Opt. Lett.* **43**, 2776 (2018).
- [21] A. J. Gonsalves, F. Liu, N. A. Bobrova, P. V. Sasorov, C. Pieronek, J. Daniels, S. Antipov, J. E. Butler, S. S. Bulanov, W. L. Waldron, D. E. Mittelberger, and W. P. Leemans, Demonstration of a high repetition rate capillary discharge waveguide, *J. Appl. Phys.* **119**, 033302 (2016).
- [22] J. Daniels, Ph.D. thesis, Eindhoven University of Technology, 2017.
- [23] R. J. Shalloo, C. Arran, L. Corner, J. Holloway, J. Jonnerby, R. Walczak, H. M. Milchberg, and S. M. Hooker, Hydrodynamic optical-field-ionized plasma channels, *Phys. Rev. E* **97**, 053203 (2018).
- [24] C. G. Durfee and H. M. Milchberg, Light Pipe for High Intensity Laser Pulses, *Phys. Rev. Lett.* **71**, 2409 (1993).
- [25] T. R. Clark and H. M. Milchberg, Time- and Space-Resolved Density Evolution of the Plasma Waveguide, *Phys. Rev. Lett.* **78**, 2373 (1997).
- [26] N. Lemos, T. Grismayer, L. Cardoso, G. Figueira, R. Issac, D. A. Jaroszynski, and J. M. Dias, Plasma expansion into a waveguide created by a linearly polarized femtosecond laser pulse, *Phys. Plasmas* **20**, 063102 (2013).
- [27] N. Lemos, T. Grismayer, L. Cardoso, J. Geada, G. Figueira, and J. M. Dias, Effects of laser polarization in the expansion of plasma waveguides, *Phys. Plasmas* **20**, 103109 (2013).
- [28] N. Lemos, L. Cardoso, J. Geada, G. Figueira, F. Albert, and J. M. Dias, Guiding of laser pulses in plasma waveguides created by linearly-polarized femtosecond laser pulses, *Sci. Rep.* **8**, 3165 (2018).
- [29] See Supplemental Material at <http://link.aps.org/supplemental/10.1103/PhysRevAccelBeams.22.041302> for further details of the experimental arrangement and analysis methods.
- [30] ISO11146-3, Lasers and laser-related equipment—Test methods for laser beam widths, divergence angles and beam propagation ratios—Part 3: Intrinsic and geometrical laser beam classification, propagation and details of test methods, 2004.
- [31] A. A. Kovalev, V. V. Kotlyar, and A. P. Porfirev, Asymmetric Laguerre-Gaussian beams, *Phys. Rev. A* **93**, 063858 (2016).
- [32] T. R. Clark and H. M. Milchberg, Optical mode structure of the plasma waveguide, *Phys. Rev. E* **61**, 1954 (2000).
- [33] C. B. Schroeder, E. Esarey, C. G. R. Geddes, C. Benedetti, and W. P. Leemans, Physics considerations for laser-plasma linear colliders, *Phys. Rev. ST Accel. Beams* **13**, 101301 (2010).