



UNIVERSITY OF LEEDS

This is a repository copy of *Bezlotoxumab for prevention of Clostridium difficile infection recurrence: Distinguishing relapse from reinfection with whole genome sequencing*.

White Rose Research Online URL for this paper:
<http://eprints.whiterose.ac.uk/155970/>

Version: Supplemental Material

Article:

Zeng, Z, Zhao, H, Dorr, MB et al. (6 more authors) (2020) Bezlotoxumab for prevention of Clostridium difficile infection recurrence: Distinguishing relapse from reinfection with whole genome sequencing. *Anaerobe*, 61. 102137. ISSN 1075-9964

<https://doi.org/10.1016/j.anaerobe.2019.102137>

© 2019, Elsevier Ltd. This manuscript version is made available under the CC-BY-NC-ND 4.0 license <http://creativecommons.org/licenses/by-nc-nd/4.0/>.

Reuse

This article is distributed under the terms of the Creative Commons Attribution-NonCommercial-NoDerivs (CC BY-NC-ND) licence. This licence only allows you to download this work and share it with others as long as you credit the authors, but you can't change the article in any way or use it commercially. More information and the full terms of the licence here: <https://creativecommons.org/licenses/>

Takedown

If you consider content in White Rose Research Online to be in breach of UK law, please notify us by emailing eprints@whiterose.ac.uk including the URL of the record and the reason for the withdrawal request.



eprints@whiterose.ac.uk
<https://eprints.whiterose.ac.uk/>

1 **Supplementary Materials**

2 **Supplementary Table 1.** Distribution of type of rCDI event and treatment group for evaluable events versus all CDI recurrence events by trial

	MODIFY I (N=1,396)		MODIFY II (N=1,163)	
All rCDI events, n (%)	297 (100)		217 (100)	
Evaluable rCDI events, n (%)	155 (52)		104 (48)	
Type of rCDI event in evaluable participants, n (%) ^a				
Reinfection	29 (19)		21 (20)	
Relapse	119 (77)		79 (76)	
Unknown	7 (5)		4 (4)	
	Evaluable (n=155)	Non-evaluable (n=142)	Evaluable (n=104)	Non-evaluable (n=113)
Treatment groups, n (%) ^b				
Bezlotoxumab	38 (58)	28 (42)	29 (47)	33 (53)
Bezlotoxumab + actoxumab	29 (48)	32 (52)	27 (47)	31 (53)
Actoxumab	33 (55)	27 (45)	–	–
Placebo	55 (50)	55 (50)	48 (49)	49 (51)
Two-sided Fisher's Exact Test p-value	0.644		0.925	
Hospitalization status, n (%)				
Outpatient	67 (58)	48 (42)	46 (48)	49 (52)

Inpatient	88 (48)	94 (52)	58 (48)	64 (52)
Two-sided Fisher's Exact Test p-value	0.672		0.965	
Antibiotic treatment for CDI, n (%)				
Vancomycin	80 (49)	82 (51)	49 (42)	67 (58)
Metronidazole	69 (56)	55 (44)	53 (56)	41 (44)
Fidaxomicin	6 (55)	5 (45)	2 (29)	5 (71)
Two-sided Fisher's Exact Test p-value	0.565		0.066	
Geographical region, n (%)				
Africa	0 (0)	1 (100)	–	–
Asia-Pacific	8 (80)	2 (20)	20 (53)	18 (47)
Europe	43 (45)	53 (55)	40 (48)	43 (52)
Latin America	7 (58)	5 (42)	1 (33)	2 (67)
North America	97 (54)	81 (46)	43 (46)	50 (54)
Two-sided Fisher's Exact Test p-value	0.119		0.860	
Gender, n (%)				
Female	95 (51)	91 (49)	62 (48)	66 (52)
Male	60 (54)	51 (46)	42 (47)	47 (53)
Two-sided Fisher's Exact Test p-value	0.633		0.891	
Clinical characteristic, n (%)				
≥65 years of age	82 (51)	78 (49)	69 (51)	66 (49)
Two-sided Fisher's Exact Test p-value	0.729		0.263	

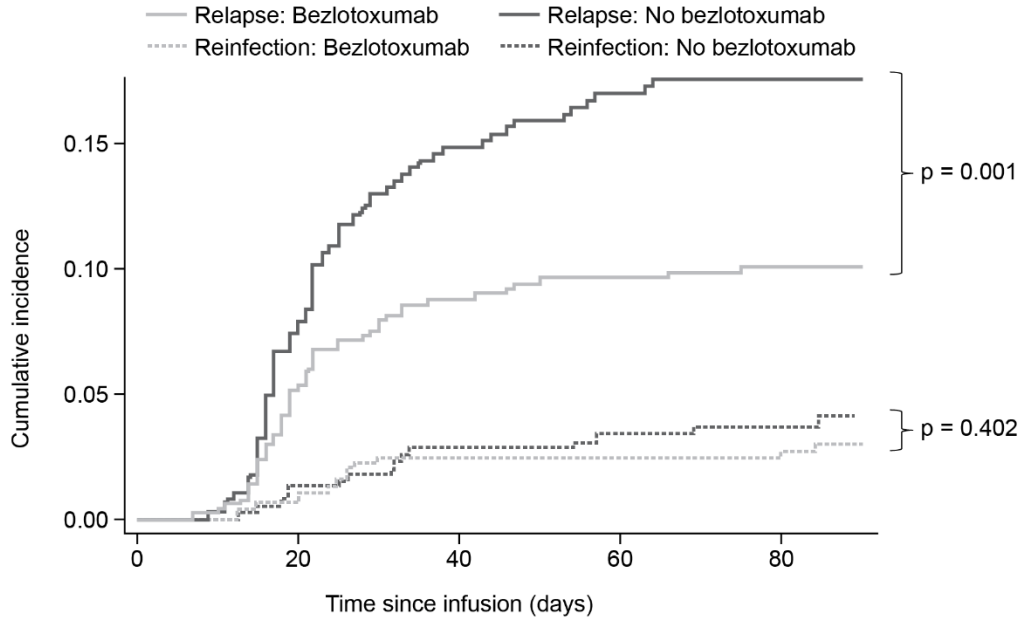
Severe CDI (Zar score ≥ 2)	23 (61)	15 (39)	15 (54)	13 (46)
Two-sided Fisher's Exact Test p-value		0.533		0.273
≥ 1 CDI episodes in past 6 months	58 (50)	59 (50)	39 (41)	56 (59)
Two-sided Fisher's Exact Test p-value		0.592		0.224
Immunocompromised	30 (50)	30 (50)	17 (46)	20 (54)
Two-sided Fisher's Exact Test p-value		0.773		0.858
Charlson Comorbidity Index ≥ 3	55 (50)	55 (50)	31 (44)	40 (56)
Two-sided Fisher's Exact Test p-value		0.631		0.390
Days to rCDI, median (interquartile range)	22 (16 – 31)	21 (16 – 34)	19.5 (16 – 29)	21 (16 – 31)
Two-sided Rank Sum Test p-value		0.860		0.265

3 ^aPercentages calculated based on total number of evaluable rCDI events; ^bpercentages calculated based on total number of participants with rCDI

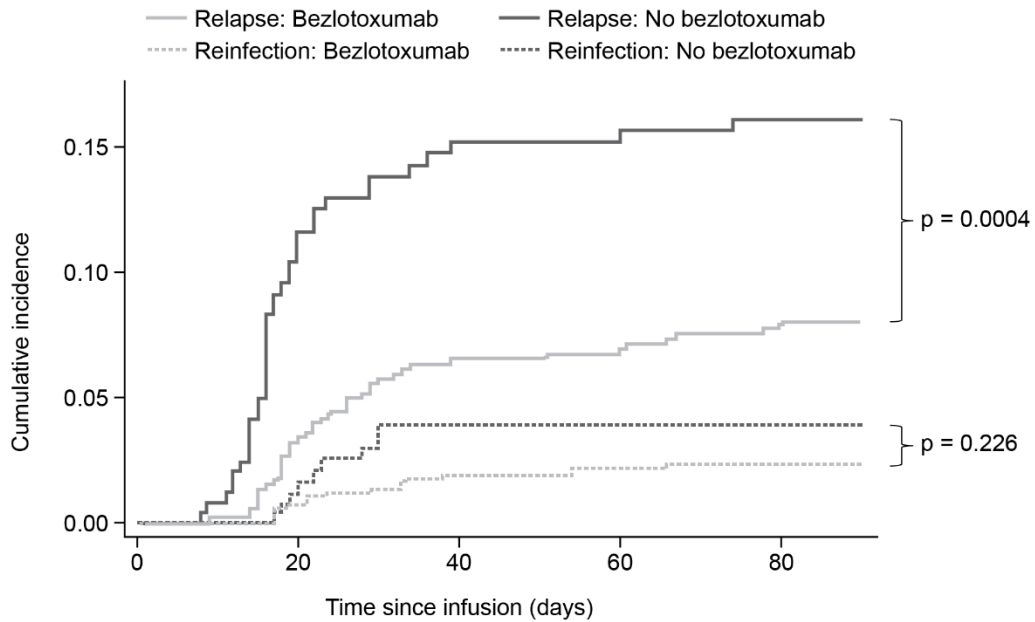
4 in each treatment group (evaluable vs non-evaluable). CDI, *Clostridium difficile* infection; rCDI; CDI recurrence.

5 **Supplementary Figure 1.** Cumulative incidence for *C. difficile* infection relapse and
6 reinfection by treatment group in (A) MODIFY I and (B) MODIFY II.

A



B



7

8