

This is a repository copy of *Mining the biomass deconstructing capabilities of rice yellow stem borer symbionts*.

White Rose Research Online URL for this paper:

<https://eprints.whiterose.ac.uk/153243/>

Version: Accepted Version

Article:

Singh, Rahul, Bennett, Joseph Philip orcid.org/0000-0001-7065-1536, Gupta, Mayank et al. (7 more authors) (Accepted: 2019) Mining the biomass deconstructing capabilities of rice yellow stem borer symbionts. *Biotechnology for biofuels*. ISSN 1754-6834 (In Press)

Reuse

Items deposited in White Rose Research Online are protected by copyright, with all rights reserved unless indicated otherwise. They may be downloaded and/or printed for private study, or other acts as permitted by national copyright laws. The publisher or other rights holders may allow further reproduction and re-use of the full text version. This is indicated by the licence information on the White Rose Research Online record for the item.

Takedown

If you consider content in White Rose Research Online to be in breach of UK law, please notify us by emailing eprints@whiterose.ac.uk including the URL of the record and the reason for the withdrawal request.

Biotechnology for Biofuels

Mining the biomass deconstructing capabilities of rice yellow stem borer symbionts

--Manuscript Draft--

Manuscript Number:	BBIO-D-19-00346R2	
Full Title:	Mining the biomass deconstructing capabilities of rice yellow stem borer symbionts	
Article Type:	Research	
Section/Category:	Enzyme engineering, production and analysis	
Funding Information:	Department of Biotechnology, Ministry of Science and Technology, India (BT/IN/INDO-UK/SuBB/21/SSY/2013)	Dr. Syed Shams Yazdani
	Biotechnology and Biological Sciences Research Council (BB/K020358/1)	Prof. Neil C. Bruce
	Department of Biotechnology, Ministry of Science and Technology, India (BT/PB/Center/03/2011)	Dr. Syed Shams Yazdani
	Biotechnology and Biological Sciences Research Council (BB/I018492/1)	Prof. Neil C. Bruce
Abstract:	<p>Background: Efficient deconstruction of lignocellulosic biomass into simple sugars in an economically viable manner is a prerequisite for its global acceptance as a feedstock in bioethanol production. This is achieved in nature by suites of enzymes with the capability of efficiently depolymerizing all the components of lignocellulose. Here we provide detailed insight into the repertoire of enzymes produced by microorganisms enriched from the gut of the crop pathogen rice yellow stem borer (<i>Scirpophaga insertulas</i>).</p> <p>Results: A microbial community was enriched from the gut of the rice yellow stem borer for enhanced rice straw degradation by sub-culturing every 10 days, for one year, in minimal medium with rice straw as the main carbon source. The enriched culture demonstrated high cellulolytic and xylanolytic activity in the culture supernatant. Metatranscriptomic and metaexoproteomic analysis revealed a large array of enzymes potentially involved in rice straw deconstruction. The consortium was found to encode genes ascribed to all 5 class of carbohydrate active enzymes (GHs, GTs, CEs, PLs and AAs), including Carbohydrate-Binding Modules (CBMs), categorized in the Carbohydrate-Active enZymes (CAZy) database. The GHs were the most abundant class of CAZymes. Predicted enzymes from these CAZy classes have the potential to digest each cell wall components of rice straw i.e. cellulose, hemicellulose, pectin, callose and lignin. Several identified CAZy proteins appeared novel, having an unknown or hypothetical catalytic counterpart with a known class of CBM. To validate the findings, one of the identified enzymes that belongs to the GH10 family was functionally characterized. The enzyme expressed in <i>E. coli</i> efficiently hydrolyzed beechwood xylan, and pretreated and untreated rice straw.</p> <p>Conclusions: This is the first report describing the enrichment of lignocellulose degrading bacteria from the gut of the rice yellow stem borer to deconstruct rice straw, identifying a plethora of enzymes secreted by the microbial community when growing on rice straw as a carbon source. These enzymes could be important candidates for biorefineries to overcome the current bottlenecks in biomass processing.</p>	
Corresponding Author:	Syed Shams Yazdani International Centre for Genetic Engineering and Biotechnology New Delhi, INDIA	
Corresponding Author E-Mail:	shams@icgeb.res.in	
Corresponding Author Secondary Information:		
Corresponding Author's Institution:	International Centre for Genetic Engineering and Biotechnology	
Corresponding Author's Secondary Institution:		

First Author:	Rahul Singh
First Author Secondary Information:	
Order of Authors:	Rahul Singh
	Joseph P. Bennett
	Mayank Gupta
	Medha Sharma
	Danish Eqbal
	Anna M. Alessi
	Adam A. Dowle
	Simon J. McQueen-Mason
	Neil C. Bruce
	Syed Shams Yazdani
Order of Authors Secondary Information:	
Response to Reviewers:	<p>Responses to Reviewer#2 comment</p> <p>Comment: I am not satisfied with authors response to my comments. No experiment in science is complete without proper control and author didn't include proper control in one of the key experiment of this manuscript. In the absence of proper control, it is not possible to know if "the enrichment of the microbes that had higher ability to deconstruct untreated rice straw" was actually a specific response due to the choice of carbon source (Rice straw) or just a random enrichment. According to author's response, most of the purified and recombinant GH10 xylases are not evaluated to digest rice straw and hence suggesting the unique action of YSB GH10 xylanase. Thus, It implies that authors could have used any insect gut microbiome as a control that doesn't feed on rice straw to show the specificity of this reported enrichment.</p> <p>Response – We apologise for misinterpreting the earlier comment by Reviewer 2. As suggested in the comment above, we have included insect gut microbiome of <i>Spodoptera litura</i> (commonly known as Tobacco cutworm), which doesn't feed on rice straw, as control in our rice straw hydrolysis experiment along with the enriched and native YSB consortium. The results have been incorporated in the text and in the Figure S1.</p> <p>In addition, we have edited the paper so that there is now no reference to the study providing an insight into lignocellulose digestion in the gut of the rice stem borer. The purpose of the study was always to enrich for microorganisms with high cellulolytic and xylanolytic activity towards rice straw for biorefining applications not to study digestion in the stem borer larvae. The novelty in the work is that the library of CAZymes described in the paper originates from the gut microflora of a very efficient rice straw consuming insect.</p>
Additional Information:	
Question	Response

[Click here to view linked References](#)

Mining the biomass deconstructing capabilities of rice yellow stem borer symbionts

**Rahul Singh^{1,2,#}, Joseph P. Bennett^{3,#}, Mayank Gupta^{1,2}, Medha Sharma^{1,2},
Danish Eqbal¹, Anna M. Alessi³, Adam A. Dowle⁴, Simon J. McQueen-
Mason³, Neil C. Bruce^{3,*}, Syed Shams Yazdani^{1,2,*}**

*¹Microbial Engineering Group, International Centre for Genetic Engineering
and Biotechnology, New Delhi, India*

*²DBT-ICGEB Centre for Advanced Bioenergy Research, International Centre
for Genetic Engineering and Biotechnology, New Delhi, India*

*³Centre for Novel Agricultural Products, Department of Biology, University of
York, York, UK.*

*⁴ Department of Biology, Bioscience Technology Facility, University of York,
York, UK.*

#These authors contributed equally

*Corresponding authors: shams@icgeb.res.in and neil.bruce@york.ac.uk

Abstract

Background: Efficient deconstruction of lignocellulosic biomass into simple sugars in an economically viable manner is a prerequisite for its global acceptance as a feedstock in bioethanol production. This is achieved in nature by suites of enzymes with the capability of efficiently depolymerizing all the components of lignocellulose. Here we provide detailed insight into the repertoire of enzymes produced by microorganisms enriched from the gut of the crop pathogen rice yellow stem borer (*Scirpophaga insertulas*).

Results: A microbial community was enriched from the gut of the rice yellow stem borer for enhanced rice straw degradation by sub-culturing every 10 days, for one year, in minimal medium with rice straw as the main carbon source. The enriched culture demonstrated high cellulolytic and xylanolytic activity in the culture supernatant. Metatranscriptomic and metaexoproteomic analysis revealed a large array of enzymes potentially involved in rice straw deconstruction. The consortium was found to encode genes ascribed to all 5 class of carbohydrate active enzymes (GHs, GTs, CEs, PLs and AAs), including Carbohydrate-Binding Modules (CBMs), categorized in the Carbohydrate-Active enZymes (CAZy) database. The GHs were the most abundant class of CAZymes. Predicted enzymes from these CAZy classes have the potential to digest each cell wall components of rice straw i.e. cellulose, hemicellulose, pectin, callose and lignin. Several identified CAZy proteins appeared novel, having an unknown or hypothetical catalytic counterpart with a known class of CBM. To validate the findings, one of the identified enzymes that belongs to the GH10 family was functionally characterized. The enzyme expressed in *E. coli* efficiently hydrolyzed beechwood xylan, and pretreated and untreated rice straw.

Conclusions: This is the first report describing the enrichment of lignocellulose degrading bacteria from the gut of the rice yellow stem borer to deconstruct rice straw, identifying a

1
2
3
4
5
6
7
8
9
10
11
12
13
14
15
16
17
18
19
20
21
22
23
24
25
26
27
28
29
30
31
32
33
34
35
36
37
38
39
40
41
42
43
44
45
46
47
48
49
50
51
52
53
54
55
56
57
58
59
60
61
62
63
64
65

plethora of enzymes secreted by the microbial community when growing on rice straw as a carbon source. These enzymes could be important candidates for biorefineries to overcome the current bottlenecks in biomass processing.

Keywords: Rice yellow stem borer, Gut consortium, Microbial diversity, Targeted enrichment, Metaexoproteome, Carbohydrate active enzymes, Xylanase, GH10 family

Background

The use of lignocellulosic ethanol as a sustainable alternative to fossil fuel derived transportation fuel or first generation biofuels depends upon consistent biomass availability and the economic viability of the bioethanol production process. Among all the lignocellulosic biomass available as potential feedstocks in lignocellulosic ethanol production the availability of agricultural residues are attractive, as the amount produced on an annual basis is likely to increase in the future due to increased demand of crop production to fulfil the nutritional requirement of the rapidly growing world population. Rice straw, wheat straw, sugarcane bagasse and corn stover are currently the most available agricultural residues, with rice straw being the most abundant (731 million tons) [1], totalling more than the sum of the other three crops (663 million tons) [2]. Rice straw also contains the least amount of lignin (one of the limiting factor towards making lignocellulosic ethanol cost competitive) when compared to all other abundantly available agricultural residues [3-5] making it a desirable choice as feedstock for lignocellulosic ethanol production [6-9]. Moreover, due to its limited suitability for other purposes due to its high silica content [10, 11], farmers usually burn the rice straw in the field wasting a potentially valuable resource, releasing emissions of black carbon, CO₂ and generating tropospheric ozone [12-14]. A major barrier in delivering cost effective lignocellulosic bioethanol is the availability of enzymes that can efficiently deconstruct each component of the plant cell wall. Indeed, none of the current formulations of biomass degrading enzymes fully meet the requirements of the biofuels industry [15]. To overcome these limitations a diverse range of lignocellulosic degrading organisms are being explored for new enzyme activities, including insects, which have evolved to digest wider range of lignocellulosic substrates [16-18].

1 The type of enzymes required for effective deconstruction of biomass depends on the
2 nature or structural component of their cell wall. There is no universal cocktail of enzymes that
3 can effectively deconstruct each type of biomass and it is usually customized on the basis of
4 biomass composition [19, 20]. Most enzymes used in commercial lignocellulosic ethanol
5 production have been discovered from pure fungal or bacterial isolates [21]. In this paper we
6 describe the selective enrichment of a microbial consortium from the gut of a rice yellow stem
7 borer (*Scirpophaga insertulas*) using rice straw as the sole carbon source. The yellow stem
8 borer (YSB) is monophagous, i.e. it derives nutrition solely from stems of rice plants. It is,
9 therefore, highly specialized to deconstruct the cell walls of rice plants into simple sugars [22].
10 Microbial communities residing in the gut of biomass degrading insects are known to interplay
11 synergistically for comprehensive biomass deconstruction [23-26]. A metatranscriptomic and
12 metaexoproteomic study was performed on a rice straw enriched microbial community from
13 rice stem borer larvae to investigate the CAZy proteins mediating the deconstruction of rice
14 plant cell walls. Several new enzymes categorized to different CAZy classes were identified,
15 one of which belonging to family GH10 was heterologously expressed in *E. coli* and its
16 deconstruction ability towards the hemicellulose component of rice straw established.
17
18
19
20
21
22
23
24
25
26
27
28
29
30
31
32
33
34
35
36
37
38
39
40
41

42 **Results**

43 **Microbial diversity of a rice yellow stem borer gut consortium**

44
45 Rice yellow stem borer (YSB) larvae were collected from paddy fields and the larvae gut
46 dissected to facilitate the collection of the gut fluid. 16S rRNA analysis of the microbial
47 community present in the gut identified various operational taxonomic units (OTUs) that were
48 affiliated to 178 genera belonging to 13 different phyla (Table 1). Proteobacteria,
49 Bacteroidetes, Firmicutes, Verrucomicrobia and Actinobacteria constituted greater than 99.5%
50
51
52
53
54
55
56
57
58
59
60
61
62
63
64
65

1 of all phyla present in terms of relative abundance (Fig. 1a). A similar trend existed in terms of
2 total number of unique OTUs detected under each category (Fig. 1b). The top 5 genera in terms
3 of 16S rRNA gene abundance were *Asticcacaulis*, *Pedobacter*, *Stenotrophomonas*, *Rhizobium*
4 and *Bacillus*, which constituted 65% of all genera present in the gut (Fig. 2a). However,
5 regarding higher diversities in the species detected within the genera, the top 5 genera detected
6 were *Azotobacter*, *Asticcacaulis*, *Stenotrophomonas*, *Aeromonas* and *Pedobacter* (Fig. 2b).
7
8
9
10
11
12
13
14
15
16
17

18 **Enrichment of a rice yellow stem borer gut microbial consortium**

19
20
21 In order to enrich the isolated microbial consortium for rice straw degradation, serial sub-
22 culturing was carried out in semi-defined medium containing chopped rice straw as the sole
23 carbon source. Preliminary experiments were first performed to develop an optimized culture
24 medium for the enrichment studies that was more suitable towards CAZy protein production.
25
26 Three different media, i.e. (1) TSB, (2) rice straw in water plus salt and (3) rice straw in water
27 plus salt and 0.1% yeast extract, were investigated as described in the Methods section. TSB is
28 a complex general purpose medium that supports the growth of a wide variety of
29 microorganisms (both gram positive as well as gram negative), was used for propagation of the
30 maximum possible number of microorganisms in the culture for the production of the
31 maximum possible types of lignocellulolytic enzymes. The other two media were selected for
32 the maximum production of lignocellulolytic enzymes directed towards rice straw by providing
33 rice straw as inducer. In Media-(3), small amount of yeast extract was also added to take care
34 of any requirement of micro-nutrients for growth. Ghio et al. [27] also reported achievement
35 of maximal cellulolytic and xylanolytic activity in a crude supernatant extract when bacteria
36 were grown in minimal media with lignocellulosic substrate and yeast extract as nitrogen
37 source. Moreover, successive passaging/sub-culturing of the consortium in the respective
38
39
40
41
42
43
44
45
46
47
48
49
50
51
52
53
54
55
56
57
58
59
60
61
62
63
64
65

1 medium for the enrichment of lignocellulolytic enzymes is a common method and has been
2 used in several studies [28, 29]. We found that growth of the microbial consortium on chopped
3 straw along with 0.1% yeast extract yielded maximum enzyme activity for the degradation of
4 both cellulose (CMC) and hemicellulose (xylan) (Fig. 3). The consortium was found to release
5 more sugar from xylan (16.86 mg/mL) compared to CMC (0.48 mg/mL). As expected, xylan
6 and CMC degrading activities were higher in the secreted protein fraction (Fig. 3a) as compared
7 to cellular protein fraction (Fig. 3b).

17
18 The microbial consortium was subsequently sub-cultured for one year to facilitate
19 enrichment and evolution of improved lignocellulolytic microbes (Fig. 4a). Significant weight
20 reduction (67%) in the rice straw was observed after one week of cultivation with the enriched
21 consortium (Fig. 4b). Culture supernatant of enriched consortium was observed for the
22 production of enzymes with cellulolytic or/and xylanolytic activities, as indicated by the
23 clearance zones on agar plate (Fig. 4c) and SDS-PAGE gel (Fig. 4d) containing cellulosic and
24 hemicellulosic substrates, and showed diverse colony morphology when grown on nutrient
25 agar plates (Fig. 4e). A separate experiment was also set-up to compare the rice straw
26 deconstruction ability of enriched consortium with a non-specific gut consortium from
27 *Spodoptera litura* (commonly known as Tobacco cutworm) (Additional File 1: Figure S1).
28 Greater than 3.6-fold higher biomass weight reduction was observed for enriched consortium
29 as compared to gut consortium from *Spodoptera litura* (Additional File 1: Figure S1a). A
30 similar observation was obtained when sugar release from rice straw was compared using
31 secretome of enriched consortium with that from *Spodoptera litura* (Additional File 1: Figure
32 S1b).

Changes in the diversity of rice yellow stem borer gut consortium during enrichment process

16S rRNA gene analysis of the microbial community after 12 months of serial passaging on rice straw showed the enrichment of major phyla Proteobacteria and Bacteroidetes from 92.5% to 99.3%, while a decrease in relative abundance of Firmicutes and Verrucomicrobia from 7.1% to 0.2% compared to the original starting culture was observed (Fig. 1a, c). The proportion of Actinobacteria remained similar in both the gut fluid and the enriched culture at 0.3%.

There was a greater diversity of microorganisms in the original gut fluid with 178 genera identified compared to 83 in the enriched culture, and while certain strains diminished during the enrichment process others became dominant (Fig. 2a, c). For example, the top 5 genera, which constituted 65% of all genera present in the gut were *Asticcacaulis* (37%), *Pedobacter* (11%), *Stenotrophomonas* (7%), *Rhizobium* (5%) and *Bacillus* (5%) (Fig. 2a), while in the case of the enriched culture, except for *Pedobacter* (8%), all the other genera were replaced in the top 5 ranking by *Pseudomonas* (49%), *Ensifer* (10%), *Flavobacterium* (8%) and *Aeromonas* (5%), constituting 80% of total abundance (Fig. 2c). We also observed differences between the quantitative abundance and the number of unique OTUs detected for each genus. For example, *Azotobacter* recorded the highest number of species detected under this genus in the gut consortium, while it was 7th in terms of abundance (Fig. 2a, b). In the enriched culture, *Pseudomonas* remained highest in both abundance and number of species detected, but *Azorhizophilus* was 2nd highest for number of species detected while it was 23rd in terms of abundance (Fig. 2c, d, Additional file 1:Figure S2). More than 99.9% of genus present in enriched consortium were also present in original consortium, albeit in varying abundance, suggesting that chance of contamination arising during passaging was negligible (Additional file 1:Table S1).

Mining CAZy proteins in the enriched consortium

The enriched consortium was superior in rice straw deconstruction in liquid culture compared to the original gut microbial consortium (Fig. 4b). We, therefore, investigated the CAZy proteins produced by this enriched consortium by collecting protein samples on days 3, 7, 13 and 20 from the culture to capture proteins produced at early, mid and late stages of the rice straw deconstruction. Metaexoproteomic analysis was performed on the secreted proteins present at each of these time points with a view to understanding the nature and relative abundance of potential enzymes and ancillary proteins, and also to investigate how the profile and abundance of these proteins changes over time. Secretory proteins available in two discrete fractions were extracted from the rice straw degrading cultures: A soluble extract was isolated by precipitating proteins from the culture supernatant, while a ‘bound fraction’ was obtained using a biotin-labelling methodology as described previously [30]. This methodology allowed the specific targeting of proteins tightly bound to the rice straw. Soluble and biomass-bound protein extracts were then analysed by LC-MS/MS and searched against the metatranscriptomic library generated from the enriched consortium.

Across the four time points a total of 1,122 unique ORFs were identified in the YSB exoproteome, which reduced to 1,088 protein hits after searching against NCBI-NR database (34 having no hits in the NR database using an E-value cut off of 1×10^{-5}). When these were submitted to the dbCAN database for CAZy annotation, 212 domain hits were returned (Table 2), which represented a total of 125 separate ORFs (some ORF contained more than one dbCAN domain e.g. a GH attached to a CBM). Among those 212 CAZy domain assignments, 138 were present exclusively in the bound fraction of rice straw, 21 were exclusively present in the soluble form in the supernatant fraction, and 53 were present in both fractions (Fig. 5).

1
2
3
4
5
6
7
8
9
10
11
12
13
14
15
16
17
18
19
20
21
22
23
24
25
26
27
28
29
30
31
32
33
34
35
36
37
38
39
40
41
42
43
44
45
46
47
48
49
50
51
52
53
54
55
56
57
58
59
60
61
62
63
64
65

Upon detailed analysis of the Glycoside Hydrolase (GH) CAZy class in the metaexoproteome, a total of 55 domains were identified that were classified into 20 GH families. Among the 55 GH domains, 51 were identified exclusively in the bound fraction (representing 19 GH families), while only one GH domain was observed exclusively in the supernatant fraction. Three GH domains from three different GH families were present in both fractions. The most abundant GH domains identified in the metaexoproteome of the enriched consortium were from families GH10, GH9, GH48, GH109, GH5 and GH6 (Table 3). When we categorized the observed GH families based on the substrate they act upon GH48, GH6 and GH9 are known for cellulose deconstruction, GH10, GH11, GH39, GH43 for hemicellulose deconstruction, while GH3, GH5 and GH74 are known to hydrolyze both. GH families for deconstruction of starch (GH13 and GH94), glycoproteins (GH33 and GH109) and peptidoglycans (GH20) were also identified (Table 3).

In terms of CBMs, a total of 95 CBMs from 15 families were identified in the enriched consortium metaexoproteome. Among those identified, 33 CBM domains (from 13 different families) were found exclusively in the bound fraction, 17 CBM domains (from 4 different families) were found exclusively in the supernatant fraction, while 45 CBM domains (representing 5 families) were identified in both fractions. By far the most represented CBM family in the metaexoproteome was CBM44 (known for binding to cellulose and xyloglucan) accounting for 56/212 of all CAZy annotated domains. However, based on relative abundance, the most abundant CBM domain identified in the YSB metaexoproteome was CBM4 (xylan, glucan and amorphous cellulose binding) and CBM2 (predominantly cellulose binding); their relative abundance is given in the Additional file 1:Table S2. When we categorized these CBMs on the basis of their binding specificity, we found CBM3 and CBM 63 known for cellulose binding, CBM13 and CBM22 for hemicellulose binding, while CBM2, CBM4, CBM6, CBM9 and CBM44 are known to bind both cellulose and hemicellulose. CBMs families known to

1 bind to pectin (CBM32), starch (CBM20 and CBM48), glycoproteins (CBM32 and CBM 40)
2 and peptidoglycans (CBM50) and chitin (CBM2 and CBM3) were also identified.
3
4

5 Metaexoproteome analysis also identified a total of 21 domains belonging to the
6 Carbohydrate Esterases (CE) CAZy class and assigned to 5 families. Among them, 18 domains
7 (representing 4 families) were present exclusively in the bound fraction, 2 domains (from 2
8 families) were present only in the supernatant fraction, and 1 domain was present in both. The
9 most abundant CE domains identified in metaexoproteome were assigned to the CE1 and CE10
10 families; their relative abundance in each fraction is given in the Additional file 1:Table S3. In
11 terms of substrate recognition, CE7 is known for hemicellulose deconstruction, CE1 and CE16
12 are known to hydrolyse hemicellulose and pectin, the CE10 domain is categorized as
13 hemicellulose and lignin deconstructing, while the carbohydrate esterases of CE4 family have
14 specificity for hemicellulose, chitin and peptidoglycan.
15
16
17
18
19
20
21
22
23
24
25
26
27
28
29

30 When we investigated the presence of Auxiliary Activities (AA) proteins in the
31 metaexoproteome, we found a total of 16 domains designated to 3 families: AA2, AA7 and
32 AA10. All the 16 domains were exclusively found in the bound fractions. Of all the CAZy
33 annotated domains, the AA10 from Protein c4515_g1_i1_1 was the most abundant, and when
34 compared with the relative abundance of all other identified proteins, it ranks 11/1088. The
35 three AA families represented in the proteome are reported to specifically deconstruct separate
36 components of the plant cell wall; AA10 deconstructs cellulose, AA7 deconstructs cellulose
37 and hemicellulose, and AA2 deconstructs lignin.
38
39
40
41
42
43
44
45
46
47
48
49

50 Additionally, the enriched consortium metaexoproteome contained Polysaccharide
51 Lyases (PL) represented by two PL families; PL1 and PL2. Pectate lyase and exo-
52 polygalacturonate lyase are two important enzymes known in these families, they are known
53
54
55
56
57
58
59
60
61
62
63
64
65

1 to depolymerise pectin present in the primary and secondary cell wall of plant biomass through
2 eliminative cleavage.
3

4
5 Several proteins were found to have interesting architecture and unusual
6 multimerization of catalytic domains or CBMs was observed in a number of ORFs (Table 4).
7
8 For example protein ID: c58415_g1_i1_1 appears to have catalytic domains of two different
9 CAZy classes i.e., PL and CE. Most of the multimerization was observed in the CBM44 family
10 where CBMs from Family 44 were repeated in the range of 2 to 11 (Table 4). Proteins with
11 multimerization in auxiliary activity (AA) domain (Protein ID: c65180_g3_i1_1 and
12 c15588_g1_i1_2, both annotated to possess three distinct AA2 domains) and carbohydrate
13 esterases (CE) (Protein ID: c175818_g1_i1_1 annotated to have two distinct CE1 domains)
14 have also been identified. Moreover, several proteins were identified with known CBMs but
15 unknown catalytic domains for example CBMs from families 32, 37, 40 and 44.
16
17
18
19
20
21
22
23
24
25
26
27
28
29
30
31
32

33 **Dynamics of CAZy protein expression**

34
35
36 The dynamics of CAZy protein expression by the enriched consortium was investigated at
37 early, mid and late stages of the rice straw deconstruction by performing hierarchical clustering
38 of CAZy family proteins present at various time points. An ordered expression profile of CAZy
39 family proteins were detected at various stages of cultivation both in the bound (Fig. 6a) and
40 supernatant fractions (Fig. 6b), which indicated roles of various CAZy classes at different
41 stages of substrate deconstruction. By comparing the expression level of various CAZy classes
42 in the 30 highly expressed contigs at each time points, it appears that the number of GH family
43 proteins increased by more than 2-fold in the initial stages from day 4 to day 13 (Fig. 6c). CBM
44 numbers were more or less similar across the cultivation period, but increased by 2.5-fold
45 mainly due to ORFs containing multi CBM44 domains. Some of the other CAZy proteins such
46
47
48
49
50
51
52
53
54
55
56
57
58
59
60
61
62
63
64
65

1 as CE, PL, AA, SLH and dockerins were also observed at various stages of the cultivation
2 within the highest expressing ORFs. From the results it appears that initially a balanced
3 expression of key CAZy family proteins occurred, which gradually shifted towards expression
4 of CE to de-esterify hemicellulosic sugars, followed by expression of GHs to hydrolyse the
5 available hemicellulose and cellulose, and then the expression of a large number of CBMs to
6 access the more recalcitrant polysaccharides.
7
8
9
10
11
12
13
14
15
16
17

18 **Recombinant expression and functional validation of a xylanase from the GH10 family**

19 A gene (Contig no. c64390_g1_i1) annotated as a xylanase belonging to CAZy GH10 family
20 (Additional file 1:Table S4), which was in the top 10 most abundant CAZy proteins observed
21 in the metaexoproteome, was selected for recombinant expression. The encoded protein has
22 two CAZy domains: a GH10 catalytic domain and a CBM2 (Fig. 7a), and showed 84.13%
23 identity at nucleotide level and 90% identity at amino acid level with *Cellulomonas* sp Z28.
24 The encoding gene was cloned (without the signal peptide sequence) into the expression vector
25 pET30a (Fig. 7b) and recombinant protein expressed in *E. coli* strain Shuffle (NEB), purified
26 by metal affinity chromatography (Fig. 6c). The purified protein was active towards
27 beechwood xylan and we found that the recombinant xylanase showed maximum activity at 60
28 °C, a pH optimum of 7.0 (Fig. 7d, e) and V_{max} and K_M values were found to be 72.2
29 $\mu\text{mol}/\text{min}/\text{mg}$ and 2.859 mg/mL, respectively. We further assessed the biomass deconstruction
30 ability of the recombinant enzyme and demonstrated that it was able to hydrolyze both
31 untreated and alkali-treated rice straw. The hydrolyzate of alkali-treated rice straw contained
32 xylobiose and xylotriose as the main products (Additional file: Figure S3a), while untreated
33 rice straw only yielded xylobiose as the product (Additional file: Figure S3b).
34
35
36
37
38
39
40
41
42
43
44
45
46
47
48
49
50
51
52
53
54
55
56
57
58
59
60
61
62
63
64
65

Discussion

To identify new microbial sources of lignocellulolytic enzymes we extracted gut fluids from YSB larvae and enriched for rice straw deconstruction by sub-culturing on rice straw for over a year. As expected, we observed much higher deconstruction of rice straw by the enriched microbial consortium as compared to the freshly isolated YSB gut consortium. The enriched consortium demonstrated significant cellulase and xylanase activities and diverse colony morphology on agar plates. Since there has been little published information on the diversity of the microbiome of the rice YSB gut, we performed 16S rRNA gene analysis and explored changes in microbial population in the enriched consortium compared to the native one. The dominant species in the YSB gut consortium were Proteobacteria, Bacteroidetes and Firmicutes, which were similar to those observed by Reetha and Mohan [31] while studying culturable microbes of the pink stem borer that is an important insect pest of several different types of crop including rice. The dominance of Proteobacteria, Bacteroidetes and Firmicutes in the YSB gut community provides a strong indication of their importance in facilitating depolymerisation of the complex rice straw cell wall components to monomeric sugars that can be absorbed by the host insect. Following serial subculturing, we observed an increase in Proteobacteria and Bacteroidetes and a decline in Firmicutes and Verrucomicrobia. As a result of cellulolytic bacteria enrichment in the consortium we observed a decrease in the diversity of total bacterial species. Interestingly, bacterial genera known for the biomass deconstruction like *Pseudomonas*, *Azotobacter*, *Dyadobacter*, *Flavobacterium*, *Prostheco bacter*, *Chitinophaga*, *Sphingobium*, *Pseudoxanthomonas*, *Mucilaginibacter*, *Giofilum*, *Ensifer*, and *Cellulomonas* were identified in both the original and enriched consortia.

We further cultured the enriched consortium on rice straw for 20 days and mined the CAZy proteins through metaexoproteomics. We analyzed proteins that were present in both the culture supernatant as well as those bound to the rice straw biomass [30]. Analysis of all

1 the CAZymes present in the metaexoproteome showed that enzymes exclusively bound to the
2 rice straw were significantly higher in abundance (9.5-fold) compared to those in the culture
3 supernatant. In thee bound fractions, the high abundance of CAZy family proteins known for
4 high catalytic activity on cellulose or hemicellulose such as GH10, GH9, GH48 and GH5 were
5 identified.
6
7
8
9
10

11
12 In addition to single domain CAZymes we also identified several enzymes with
13 multidomain molecular architecture. An enzyme was identified with a single catalytic domain
14 and two different carbohydrate binding modules (CBM2 and CBM3), indicating that the
15 enzyme may possess broad specificity for different substrates. Interestingly, CAZymes with
16 multiple repetition of CBMs belonging to families CBM13, CBM20 and CBM44, were also
17 identified. Multimerization of CBM44 in different enzymes were in the range of 2 to 11 binding
18 domains. To date multimerization of CBMs are mostly reported for thermostable enzymes like
19 CenC from *Clostridium thermocellum* [32], xylanase from *Thermoanaerobacterium*
20 *aotearoense* [33] and CelA from *Caldicellulosiruptor bescii* [34]. These enzymes catalyze
21 hydrolysis at high temperature which results in weakened binding to the insoluble substrate
22 because of increased kinetic energy [35]. The availability of several CBMs possibly provides
23 better accessibility of insoluble substrate to the enzyme at these higher temperatures. Moreover,
24 some thermophilic bacteria are reported to secrete non-catalytic proteins to increase the
25 accessibility of the insoluble substrate to the biomass deconstructing enzymes [35] and this
26 may also apply to the consortium from the YSB. Another interesting finding is identification
27 of several polypeptides with unknown catalytic domains linked to known CBMs. The presence
28 of CBMs with domains of unknown function suggests that these proteins play a role in
29 lignocellulose deconstruction and present interesting targets for characterization and for
30 potentially boosting saccharification of biomass feedstocks.
31
32
33
34
35
36
37
38
39
40
41
42
43
44
45
46
47
48
49
50
51
52
53
54
55
56
57
58
59
60
61
62
63
64
65

1 One of the most abundant enzymes (maximum emPAI score) in the enriched
2 consortium was a GH10 xylanase which we confirmed by showing that the recombinant
3 enzyme was capable of hydrolyzing beechwood xylan and the hemicellulosic component of
4 both treated and untreated rice straw.
5
6
7
8
9

10 11 12 13 **Conclusions** 14

15
16
17 The present study was aimed at enriching a rice yellow stem borer (YSB) microbial consortium
18 for better lignocellulosic biomass deconstruction ability, particularly against untreated rice
19 straw. As a result, the enriched rice YSB consortium was found to deconstruct ~67% of the
20 rice straw in 7 days, which is high compared high compared to other reported microbial
21 consortia. Wang et al. [36] found 31.5% degradation efficiency against untreated rice straw in
22 30 days by the rice straw adapted (RSA) compost consortia. Wongwilaiwalin et al. [37] and
23 Yan et al. [29] reported 45% (MC3F compost consortium) and 49% (BYND-5 compost
24 consortium) degradation efficiency against untreated rice straw in 7 days, respectively. The
25 discovery of domains of unknown function linked to CBMs and enzymes with multi-domain
26 architecture present interesting targets for further characterization and possible
27 biotechnological application.
28
29
30
31
32
33
34
35
36
37
38
39
40
41
42
43
44
45
46
47

48 **Methods** 49

50 51 **Rice YSB gut consortium cultivation for induced expression and mining of biomass** 52 **deconstructing enzymes** 53

54
55
56
57 The insect *Scirpophaga insertulas* commonly known as rice yellow stem borer (YSB) was
58 selected in this study for targeted discovery of rice straw deconstructing enzymes. Insect larvae
59
60
61
62
63
64
65

1 (approximately 25) were collected from the paddy fields of the Biotechnological Research
2 Experiments field, Raipur University, Chhattisgarh, India in October 2011. Insect larvae were
3
4 dissected aseptically, and the gut was isolated and microbial community harbouring in the gut
5
6 was used as inoculum for further experiments. The YSB gut microbial community was
7
8 inoculated in three different media: (1) Tryptic Soya Broth (TSB) (1.7% Tryptone, 0.3% Soya
9
10 peptone, 0.25% K₂HPO₄, 0.5% NaCl and 0.25% glucose), (2) Rice straw in water having salt
11
12 only (0.25% K₂HPO₄, 0.5% NaCl and 0.5% rice straw of ~0.5 cm), and (3) Rice straw in water
13
14 having salt and 0.1% yeast extract (0.25% K₂HPO₄, 0.5% NaCl, 0.1% yeast extract and 0.5%
15
16 rice straw of ~0.5 cm). The YSB gut microbial community was cultured in three different
17
18 medium separately for 7 days at 30 °C with 150 rpm shaking. After seven days the culture was
19
20 centrifuged at 10,000 rpm for 20 min, and the supernatant and cell pellet were collected
21
22 separately. The supernatant was filtered through 0.22 µM syringe filter and used for enzyme
23
24 assays, while the cell pellet was sonicated at 4 °C, centrifuged at 10,000 rpm and total soluble
25
26 proteins (TSP) used for the enzyme assays. CMCase and xylanase assays were performed for
27
28 both secretory (culture supernatant) and cell bound protein fractions collected from all three
29
30 different culture and evaluated.
31
32
33
34
35
36
37
38
39

40 For enrichment of the rice straw hydrolysing microbial consortium, the insect gut
41
42 microbial consortium was cultured into a medium having salt [NaCl (0.5%), K₂HPO₄ (0.25%)],
43
44 0.1% yeast extract and rice straw as the main carbon source and passaged after every 7 days
45
46 for one year. The 1 year passaged culture was evaluated for its potential biomass deconstruction
47
48 ability and changes in microbial community structure or diversity.
49
50
51
52
53
54

55 **Enzyme assays**

56
57
58
59
60
61
62
63
64
65

1 Enzyme assays using carboxyl methyl cellulose (CMCase) and beechwood xylan were
2 performed as described previously [38] with some modifications. Carboxyl methyl cellulose
3 (CMC, sigma) and beechchwood xylan (HiMedia) was selected as substrate for evaluating
4 cellulose and hemicellulose deconstruction ability of the consortium, respectively. The 250 μ l
5 of substrate (2% w/v in sodium phosphate buffer pH 7.4) was mixed with 250 μ l of protein
6 sample and incubated at 50 °C for 30 min. 500 μ l of dinitrosalicylic acid (DNSA) was then
7 added and solution was boiled at 100 °C for 5 min. The solution was cooled to room
8 temperature and the reducing sugar content was estimated using glucose and xylose as
9 standards for CMCase and xylanase assay, respectively. One unit of enzyme activity was
10 defined as the amount of enzyme that released 1 μ mol of reducing sugar per min.
11
12
13
14
15
16
17
18
19
20
21
22
23
24

25 For plate assay, an equal volume of CMC or xylan (1% w/v in water) and tryptic soya
26 broth medium (2x) (with 1.5 % agar and 0.5% trypan blue dye) was autoclaved separately.
27 After autoclaving both solutions were mixed together and poured into the Petri plate in laminar
28 flow hood. The protein solution was applied on the surface of the solid agar plate under aseptic
29 conditions and incubated at 37 °C. After 48 hours plates were visually inspected for clearance
30 zone formation.
31
32
33
34
35
36
37
38
39

40 CMCase and xylanase activity using zymogram on SDS-PAGE gel were performed as
41 described earlier [34]. In brief the protein sample were resolved on a 12% SDS-PAGE gel
42 containing either 0.5% (w/v) CMC or 0.5% (w/v) beechwood xylan. After electrophoresis, the
43 gel was washed once with 20% (v/v) isopropanol in phosphate buffered saline (PBS) for 1 min
44 followed by three washes of 20 min each in PBS. The gel was incubated in PBS at 37 °C for 1
45 h, stained with 0.1% (w/v) Congo red for 30 min, and destained with 1 M NaCl. Clear bands
46 against the red background indicated CMCase or xylanase activity. Protein concentrations were
47 estimated with the BCA (bicinchoninic acid) Protein Assay kit (Pierce) using bovine serum
48 albumin as a standard.
49
50
51
52
53
54
55
56
57
58
59
60
61
62
63
64
65

Microbial diversity assessment using Ion PGM sequencer platform

The original rice YSB gut consortium and the enriched consortium passaged for one year were processed for total DNA extraction as described in a latter section. Extracted DNA was then treated with RNase, cleaned and concentrated using Genomic DNA clean-up kit (ZymoResearch). The purified DNA was used as a template to amplify V4 hyper variable regions of the 16S rRNA gene in the consortium. Phusion High-Fidelity DNA Polymerase (Finnzymes OY, Espoo, Finland) and primer pairs covering the V4 (520 forward: 5' AYTGGGYDTAAAGNG 3', and 802 reverse: 5' TACNVGGGTATCTAATCC 3') hyper variable region [39] were used in the amplification reaction. The amplified fragments were purified with Agencourt AMPure XP (Beckman Coulter). The quantity and quality of the purified PCR products was analysed using an Agilent Tape Station with an Agilent DNA 1000 kit. Libraries were prepared using the Ion Plus Fragment Library Kit (Life Technologies Corporation) and barcoded using Ion Xpress Barcode Adapters 1-16 Kit (Life Technologies Corporation). The libraries were quantified using Invitrogen Qubit, and an equimolar pool of initial and passaged library with unique barcodes was generated to create the final library. Template preparation was carried out with the pooled libraries using the Ion One Touch 2 system with an Ion PGM Template OT2 400 Kit (Life Technologies Corporation). Quality control at the pre-enriched template stage was made using the Ion Sphere Quality Control Kit (Life Technologies Corporation) and the Qubit 2.0 Fluorometer (Invitrogen). The templated libraries were sequenced using an Ion PGM sequencer platform (Thermo Fisher Scientific). The instrument cleaning, initialization, and sequencing was done by reagents provided in the Ion PGM 400 Sequencing Kit (Life Technologies Corporation) using a Ion314 Chip v2.

Data processing and analysis for microbial diversity

1
2
3 Amplicon Fastq files were converted to Fasta and quality files using QIIME
4
5 convert_fastaqual_fastq.py script [40]. The resulting files were quality filtered by removing
6
7 reads outside the minimum (-l 180) and maximum (-L 250) read length and quality score (Q
8
9 <25). During the split_libraries.py process, forward and reverse primer sequences were also
10
11 trimmed. Filtered files were concatenated and replicated sequences with a minimum size of
12
13 two were removed with VSEARCH-derep_fulllength command [41]. OTU clustering and
14
15 chimera filtering was performed using UPARSE-cluster_otu command [42] at 97% identity.
16
17 The pipeline produced two output files, an OTU table in txt format (further converted into biom
18
19 file format) and a set of representative sequences for each OTU in fasta format. The
20
21 representative sequences were then assigned to taxonomy using UCLUST [43], and
22
23 Greengenes database [44] as a reference on QIIME (assign_taxonomy.py). Taxonomy was
24
25 added to the OTU table by using biom add-metadata script. Running a default command on
26
27 QIIME, alpha and beta diversity and taxonomy summary analyses were performed.
28
29
30
31
32
33
34
35
36
37
38
39
40
41
42
43
44
45
46
47
48
49
50
51
52
53
54
55
56
57
58
59
60
61
62
63
64
65
66
67
68
69
70
71
72
73
74
75
76
77
78
79
80
81
82
83
84
85
86
87
88
89
90
91
92
93
94
95
96
97
98
99
100
101
102
103
104
105
106
107
108
109
110
111
112
113
114
115
116
117
118
119
120
121
122
123
124
125
126
127
128
129
130
131
132
133
134
135
136
137
138
139
140
141
142
143
144
145
146
147
148
149
150
151
152
153
154
155
156
157
158
159
160
161
162
163
164
165
166
167
168
169
170
171
172
173
174
175
176
177
178
179
180
181
182
183
184
185
186
187
188
189
190
191
192
193
194
195
196
197
198
199
200
201
202
203
204
205
206
207
208
209
210
211
212
213
214
215
216
217
218
219
220
221
222
223
224
225
226
227
228
229
230
231
232
233
234
235
236
237
238
239
240
241
242
243
244
245
246
247
248
249
250
251
252
253
254
255
256
257
258
259
260
261
262
263
264
265
266
267
268
269
270
271
272
273
274
275
276
277
278
279
280
281
282
283
284
285
286
287
288
289
290
291
292
293
294
295
296
297
298
299
300
301
302
303
304
305
306
307
308
309
310
311
312
313
314
315
316
317
318
319
320
321
322
323
324
325
326
327
328
329
330
331
332
333
334
335
336
337
338
339
340
341
342
343
344
345
346
347
348
349
350
351
352
353
354
355
356
357
358
359
360
361
362
363
364
365
366
367
368
369
370
371
372
373
374
375
376
377
378
379
380
381
382
383
384
385
386
387
388
389
390
391
392
393
394
395
396
397
398
399
400
401
402
403
404
405
406
407
408
409
410
411
412
413
414
415
416
417
418
419
420
421
422
423
424
425
426
427
428
429
430
431
432
433
434
435
436
437
438
439
440
441
442
443
444
445
446
447
448
449
450
451
452
453
454
455
456
457
458
459
460
461
462
463
464
465
466
467
468
469
470
471
472
473
474
475
476
477
478
479
480
481
482
483
484
485
486
487
488
489
490
491
492
493
494
495
496
497
498
499
500
501
502
503
504
505
506
507
508
509
510
511
512
513
514
515
516
517
518
519
520
521
522
523
524
525
526
527
528
529
530
531
532
533
534
535
536
537
538
539
540
541
542
543
544
545
546
547
548
549
550
551
552
553
554
555
556
557
558
559
560
561
562
563
564
565
566
567
568
569
570
571
572
573
574
575
576
577
578
579
580
581
582
583
584
585
586
587
588
589
590
591
592
593
594
595
596
597
598
599
600
601
602
603
604
605
606
607
608
609
610
611
612
613
614
615
616
617
618
619
620
621
622
623
624
625
626
627
628
629
630
631
632
633
634
635
636
637
638
639
640
641
642
643
644
645
646
647
648
649
650
651
652
653
654
655
656
657
658
659
660
661
662
663
664
665
666
667
668
669
670
671
672
673
674
675
676
677
678
679
680
681
682
683
684
685
686
687
688
689
690
691
692
693
694
695
696
697
698
699
700
701
702
703
704
705
706
707
708
709
710
711
712
713
714
715
716
717
718
719
720
721
722
723
724
725
726
727
728
729
730
731
732
733
734
735
736
737
738
739
740
741
742
743
744
745
746
747
748
749
750
751
752
753
754
755
756
757
758
759
760
761
762
763
764
765
766
767
768
769
770
771
772
773
774
775
776
777
778
779
780
781
782
783
784
785
786
787
788
789
790
791
792
793
794
795
796
797
798
799
800
801
802
803
804
805
806
807
808
809
810
811
812
813
814
815
816
817
818
819
820
821
822
823
824
825
826
827
828
829
830
831
832
833
834
835
836
837
838
839
840
841
842
843
844
845
846
847
848
849
850
851
852
853
854
855
856
857
858
859
860
861
862
863
864
865
866
867
868
869
870
871
872
873
874
875
876
877
878
879
880
881
882
883
884
885
886
887
888
889
890
891
892
893
894
895
896
897
898
899
900
901
902
903
904
905
906
907
908
909
910
911
912
913
914
915
916
917
918
919
920
921
922
923
924
925
926
927
928
929
930
931
932
933
934
935
936
937
938
939
940
941
942
943
944
945
946
947
948
949
950
951
952
953
954
955
956
957
958
959
960
961
962
963
964
965
966
967
968
969
970
971
972
973
974
975
976
977
978
979
980
981
982
983
984
985
986
987
988
989
990
991
992
993
994
995
996
997
998
999
1000

Experimental design and sample collection for meta-transcriptomic and metaexoproteomic study

To investigate candidate biomass deconstructing proteins/enzymes and their encoding genes, metaexoproteomics and metatranscriptomics of the stable rice YSB gut consortium was performed respectively. Three replicates of 2 L flasks containing 500 mL medium (0.5% NaCl, 0.25% K₂HPO₄, 1% Yeast Extract, pH 7) with 1.5% rice straw were prepared and autoclaved, and 2% YSB seed culture was inoculated, cultured by incubating at 30 °C and 150 rpm for 20 days. In addition to these three cultures a negative control flask was also set up as outlines

1 above, but without the addition of the YSB seed culture. 100 mL samples were collected at 3,
2 7, 13 and 20 days post inoculation for protein and DNA/RNA extraction for
3 metaexoproteomics and metatranscriptomics, respectively.
4
5
6
7
8
9

10 **DNA and RNA extraction**

11
12
13
14 Triplicate samples of DNA and RNA were extracted from all three cultures and the negative at
15 each time points by following the protocol reported previously [45] with some modification.
16
17 In brief, collected samples were spun at 12,000×g at 4 °C for 10 min. Supernatant was used for
18 protein preparation while pelleted biomass (microbial and rice straw) was used for DNA/RNA
19 preparation. 0.5 g of the biomass pellet was transferred into 2 mL microcentrifuge tube
20 containing glass beads (0.5 g, 0.5 mm and 0.5 g, 0.1 mm), and 0.5 mL CTAB buffer (10%
21 CTAB in 0.7 M NaCl, 240 mM potassium phosphate buffer, pH 8.0 and 1 µl β-
22 Mercaptoethanol/mL buffer) was added and vortexed. For nucleic acid extraction 0.5 mL
23 phenol:chloroform:isoamyl alcohol (25:24:1, pH 8.0) was added, mixed and then homogenised
24 using a TissueLyser II (Qiagen) for 4 × 2.5 min at a speed setting of 28 s⁻¹. The samples were
25 phase separated by centrifugation at 13000×g, 4 °C for 10 min, and the resulting aqueous phase
26 was extracted with an equal volume of chloroform:isoamyl alcohol (24:1). The nucleic acids
27 were precipitated overnight at 4 °C from the final aqueous fraction by adding 2 volumes of
28 precipitation solution (1.6 M NaCl, 20% PEG8000 buffer 0.1% DEPC treated). The resulting
29 pellet was washed twice with 1 mL ice-cold 75% ethanol, air-dried and resuspended in 50 µL
30 RNase/DNase free water.
31
32
33
34
35
36
37
38
39
40
41
42
43
44
45
46
47
48
49
50
51
52
53
54
55
56

57 **Metatranscriptome (Illumina shotgun) sequencing**

1 A sample of the extracted nucleic acids was treated to remove DNA by addition of DNase (Mo
2 Bio, USA) as recommended by manufacturers. Total RNA was then processed for small RNA
3 removal and purification by RNA Clean and Concentrator kit (Zymo Research, USA). For each
4 time point purified total RNA (0.7 µg) from all three biological replicates were pooled (total
5 2.1 µg) and processed for ribosomal RNA removal by using Ribo-ZeroTM Magnetic Gold
6 (Epidemiology) kit (Epicentre or Illumina, USA), using the protocol recommended by
7 manufacturer. The quality of ribosomal RNA (rRNA)-depleted sample was analysed using an
8 Agilent TapeStation 2200 using High Sensitivity (HS) RNA ScreenTape (Agilent, USA).
9 Finally, 100 ng rRNA depleted RNA was used for library preparation to perform sequencing
10 on Illumina 2500 platform (Illumina, USA). For all four time points the library was prepared
11 using TruSeq RNA Sample Prep v2 kit (Part# 15026495, Illumina) and the protocol was
12 adapted as recommended by the manufacturer. During library preparation different indexing
13 adapters were added to the pooled RNA samples for each of the four time points. These four
14 libraries were normalized with equimolar amounts of each library, pooled and subsequently
15 diluted to 10 pM.
16
17
18
19
20
21
22
23
24
25
26
27
28
29
30
31
32
33
34
35
36

37 For sequencing, rapid run mode was followed. The library template along with 1% PhiX
38 template hybridised onto an Illumina flow cell (single lane) placed on cBot system, and
39 complete cluster generation was done on the HiSeq 2500 instrument. TruSeq Rapid PE
40 Clusture v1 kit (Illumina) was used for cluster generation following the protocol recommended
41 by the manufacturer. Sequencing by synthesis (SBS) chemistry was applied for clustered
42 library sequencing using TruSeq Rapid SBS v1 kit for 100 cycles for each pair end reads. HiSeq
43 Control Software (HCS) 2.2.58, Real-Time Analysis software 1.18.64 and Sequencing analysis
44 viewer software was used in sequencing run processing and data acquisition. Sequences were
45 obtained in the form of reads in BCL format. Reads were demultiplexed by removing 6 bp
46 index using the CASAVA v1.8 programme allowing for a one base-pair mismatch per library,
47
48
49
50
51
52
53
54
55
56
57
58
59
60
61
62
63
64
65

1 and converted to FASTQ format using bcl2fastq. The sequenced libraries were searched against
2 SILVA 115 database [46] to identify rRNA genes using Bowtie 2 software [47]. Those reads
3
4 as well as orphans and poor quality sequences were removed with the ngsShoRT (next-
5 generation sequencing Short Reads Trimmer) software. Filtered reads from all time points
6
7 were pooled prior to assembly, the Trinity package [48] with a k-mer length of 43 was used for
8
9 de novo assembly.
10
11
12
13
14
15
16
17

18 **Metaexoproteomics of enriched gut consortium**

19
20
21 A sample of the biomass deconstructing enriched microbial community culture (30 mL) was
22 collected at all four time points from all three biological replicates. This was, centrifuged at
23
24 12,000×g at 4 °C for 10 min. Both supernatant and pelleted biomass fractions were collected
25
26 to be processed for protein concentration and LC-MS/MS analysis. The 3 × 5 mL of the
27
28 collected supernatant was precipitated by addition of 100% ice-cold acetone after filtering it
29
30 through 0.22 µm syringe filter, and incubated for 16 h at -20 °C. The precipitated protein was
31
32 collected by centrifugation at 10,000×g and washed two times with 80% ice-cold acetone.
33
34 Pellets were finally air dried and resuspended in 0.5 × phosphate buffer saline (PBS, 68 mM
35
36 NaCl, 1.34 mM KCl, 5 mM Na₂HPO₄, 0.88 mM KH₂PO₄), snap frozen and stored at -80 °C
37
38 till processed for next step.
39
40
41
42
43
44
45
46

47 The pelleted biomass fraction was presumed to contain microbes, rice straw and
48 secreted proteins attached to both. In triplicate, 2 g of biomass were aliquoted into 50 mL tubes
49
50 and washed twice with 25 mL ice-cold 0.5× PBS buffer. Washed biomass was re-suspended in
51
52 19 mL 0.5× PBS, with the addition of 10 mM freshly prepared EZ-link-Sulfo-NHS-SS-biotin
53
54 (Thermo Scientific) and incubated with rotator at 4 °C for 1 h. Samples were pelleted
55
56 (10,000×g, at 4 °C for 10 min), and the supernatant discarded. The biotinylated reaction was
57
58
59
60
61
62
63
64
65

1 quenched by the addition of 25 mL 50 mM Tris-Cl pH 8.0 and a further 30 min incubation with
2 rotation at 4 °C. The soluble fraction was recovered and washed twice with 0.5× PBS, and
3
4 bound proteins liberated by resuspension in 10 mL of 2% SDS (pre-heated to 60 °C), incubated
5
6 at room temperature for 1 h with rotation. To recover the liberated biotin-labelled proteins, the
7
8 samples were clarified by centrifugation (10,000×g, 4 °C for 10 min) and the supernatant was
9
10 collected. The protein present in supernatant was precipitated with ice-cold acetone and
11
12 incubated at -20 °C for 16 h. Precipitate was then washed twice with 80% ice-cold acetone, air-
13
14 dried and resuspended in 1 mL 1× PBS containing 0.1% SDS. Re-suspended proteins were
15
16 filtered through 0.2 µm filter and loaded onto a HiTrap™ Streptavidin HP column (GE,
17
18 Sweden) pre-packed with 1 mL Streptavidin immobilized on a Sepharose beads matrix. The
19
20 column was equilibrated with 10 column volume (CV) PBS containing 0.1% SDS
21
22 (equilibration buffer). After protein loading column was washed with 10 column volumes (CV)
23
24 1× PBS containing 0.1% SDS (equilibration buffer). For elution of bound protein, freshly
25
26 prepared 1 mL of 1× PBS buffer containing 50 mM DTT (elution buffer) was added into the
27
28 column and incubated overnight at 4 °C before eluting.
29
30
31
32
33
34
35
36
37

38 In preparation of label-free LC-MS/MS, both bound fraction proteins and samples of
39
40 protein collection from culture supernatant were desalted using 7 k MWCO Zeba Spin desalting
41
42 column (ThermoFisher scientific, USA) according to the manufacturer instructions. Protein
43
44 samples were then freeze dried and re-suspended in SDS-PAGE protein loading buffer, loaded
45
46 onto 10 % Bis-Tris gels and resolved for 6 min at 180 V to store protein samples in-gel. After
47
48 staining, protein bands were excised and stored at -80 °C prior to LC-MS/MS analysis.
49
50
51
52
53
54
55

56 **Liquid Chromatography Coupled Tandem mass Spectrometric Analysis**

57
58
59
60
61
62
63
64
65

1 The sliced gel pieces were subjected to tryptic digestion after reduction and alkylation. The
2 resulting peptides were reconstituted in 0.1% trifluoroacetic acid (TFA) and processed for nano
3 LC-MS/MS as described previously [49]. In brief, reconstituted peptides were loaded onto a
4 nanoAcquity UPLC system (Waters, Milford, MA, USA) equipped with a nanoAcquity
5 Symmetry C18, 5- μ m trap (180 μ m \times 20 mm) and a nanoAcquity BEH130 1.7- μ m C18
6 capillary column (75 μ m \times 250 mm). The trap was washed for 5 min with 0.1% aqueous formic
7 acid having flow rate of 10 μ L/min before switching flow to the capillary column. Separation
8 on the capillary column was achieved by gradient elution of two solvents (solvent A: 0.1%
9 formic acid in water; solvent B: 0.1% formic acid in acetonitrile) with a flow rate of 300
10 nL/min. The column temperature was 60 °C, and the gradient profile was as follows: initial
11 conditions 5% solvent B (2 min), followed by a linear gradient to 35% solvent B over 20 min
12 and then a wash with 95% solvent B for 2.5 min. The nanoLC system was interfaced with a
13 maXis liquid chromatography coupled to tandem mass spectrometry (LC-Q-TOF) system
14 (Bruker Daltonics) with a nanoelectrospray source fitted with a steel emitter needle (180 μ m
15 o.d. \times 30 μ m i.d.; roxeon). Positive electron spray ionization (ESI)-MS and MS/MS spectra
16 were acquired using AutoMSMS mode. Instrument control, data acquisition, and processing
17 were performed using Compass 1.3 SP1 software (microTOF control HyStar, and Data
18 Analysis software; Bruker Daltonics). The following instrument settings were used: ion spray
19 voltage = 1,400 V; dry gas 4 L/min; dry gas temperature = 160 °C and ion acquisition range
20 m/z 50-2,200. AutoMSMS settings were as follows: MS = 0.5 s (acquisition of survey
21 spectrum); MS/MS [collision induced dissociation (CID) with N₂ as collision gas]; ion
22 acquisition range, m/z = 350-1,400; 0.1-s acquisition for precursor intensities above 100,000
23 counts; for signals of lower intensities down to 1,000 counts acquisition time increased linear
24 to 1.5 s; the collision energy and isolation width settings were automatically calculated using
25 the AutoMSMS fragmentation table; 3 precursor ions, absolute threshold 1,000 counts,
26
27
28
29
30
31
32
33
34
35
36
37
38
39
40
41
42
43
44
45
46
47
48
49
50
51
52
53
54
55
56
57
58
59
60
61
62
63
64
65

1 preferred charge states, 2–4; singly charged ions excluded. Two MS/MS spectra were acquired
2 for each precursor and former target ions were excluded for 60 s.
3
4

5 Acquired data from MS/MS was searched against the previously prepared YSB
6 metatranscriptome data base using Mascot search engine (Matrix Science Ltd., version 2.4)
7 through the Bruker ProteinScape interface version 2.1). The following parameters were
8 applied: tryptic digestion, carbamidomethyl cysteine as fixed modification, oxidized
9 methionine and deamidation of asparagine and glutamine as the variable modification. A
10 maximum of one missed cleavages were allowed. The peptide mass tolerance was set to 10
11 ppm and MS/MS fragment mass tolerance was set to 0.1 Da. Protein false discovery rate (FDR)
12 was adjusted to 1%. A minimum of two significant peptides and one unique peptide were
13 required for each identified protein.
14
15
16
17
18
19
20
21
22
23
24
25
26
27
28
29
30

31 **Bioinformatic analysis of metaexoproteomes**

32 Nucleotide sequences of contigs matching to observed proteins by Mascot were retrieved from
33 the metatranscriptomic databases using Blast-2.2.30+ Standalone. EMBOSS [50] application
34 was used to generate all possible open reading frames (ORFs) from these matched contigs,
35 defined as any region >300 bases between a start (ATG) and a stop codon. These ORF libraries
36 were converted into amino acid sequences and these proteins were annotated using BLASTP
37 searching against the non-redundant NCBI database with an E-value threshold of 1×10^{-5} .
38 Protein sequences were also annotated using dbCAN [51] to identify likely carbohydrate active
39 domains. Subcellular localisation was predicted using SignalP v. 4.1 [52] program with the
40 default cut off value.
41
42
43
44
45
46
47
48
49
50
51
52
53
54
55
56
57
58
59

60 **Functional validation of rice YSB gut symbionts' xylanase affiliated to family GH10**

1 Open reading frame (1416 bp) of the metatranscriptome assembled contig no. c64390_g1_i1
2 encoding putative endoxylanase of CAZy family GH10 was selected for functional validation
3
4 in *Escherichia coli*. The encoded protein was 471 amino acids including an N-terminal signal
5
6 peptide of 35 amino acids. For recombinant expression, the encoding gene without signal
7
8 peptide of 1320 bp was codon optimized and synthesised commercially (Genscript), and
9
10 subcloned in pET30a vector at *NdeI* and *HindIII* sites. This construct was transformed into
11
12 BL21(DE3) and SHuffle (NEB) strain of *E. coli*. Expression profiles for both the expression
13
14 hosts were evaluated on SDS-PAGE and due to higher expression levels of target soluble
15
16 protein in SHuffle cells, these cells were selected for scaled up protein expression in 2 litre
17
18 culture, followed by affinity purification of recombinant xylanase using Ni-NTA agarose
19
20 matrix (Qiagen). Concentration of the purified protein was determined by using BCA Protein
21
22 Assay kit as described earlier.
23
24
25
26
27
28

29
30 The enzymatic activity of the purified protein was tested for its ability to hydrolyse
31
32 CMC (Carboxy Methyl Cellulose, Sigma), PASC (Phosphoric Acid Swollen Cellulose
33
34 prepared from Avicel pH 101, Sigma) and Xylan (Beechwood Xylan, HiMedia). The released
35
36 reducing sugars were measure when the recombinant protein was incubated with number of
37
38 different substrate by the dinitrosalicylic acid (DNSA) method as described previously [53].
39
40 Briefly, a crude enzyme solution (0.125 mL) was mixed with 0.125 mL of a 2% substrate
41
42 solution in 20 mM Tris-Cl pH 7.0 buffer and incubated at 50 °C for 30 min. Enzymatic
43
44 reactions against PASC was incubated for 60 min. The reducing sugar produced in these
45
46 experiments was measured by the DNS reagent at 540 nm. One unit of enzymatic activity was
47
48 defined as the amount of enzyme that released 1 μ mol of reducing sugar from the substrate per
49
50 minute under the above conditions.
51
52
53
54
55
56
57
58
59
60
61
62
63
64
65

Determination of optimal reaction conditions, kinetic parameters and biomass

hydrolysis capability of recombinant RSB_GH10_Xylanase

The optimum temperature for maximum xylanase activity was determined by varying the enzymatic reaction temperature in the range of 40 to 100 °C. For optimum pH assessment, purified protein was dialysed against buffers ranging in pH from 4 to 9. The buffer for pH range 4-6 was 20 mM Citrate buffer containing 150 mM NaCl, while buffer for pH range 7-9 was 20 mM Tris-Cl containing 150 mM NaCl. Activity assays were performed as described previously.

The kinetic parameters of recombinant xylanase were determined using beechwood xylan with substrate concentrations ranging from 0.5–10 mg/mL in 20 mM phosphate buffer (pH 7.0) at 60 °C. The kinetic constants, K_M and V_{max} , were estimated using GraphPad Prism 7.02 (GraphPad Software, Inc., San Diego, CA).

Rice straw deconstruction by recombinant RSB_GH10_Xylanase was determined as follows. Sodium hydroxide treated and un-treated rice straw (kindly provided by Prof. Arvind Lali) were deconstructed by incubating 16 mg with purified 30 µg recombinant xylanase for 8 hours at 60 °C. After incubation, the reaction mixture was centrifuged at 20,000×g for 15 min, supernatant was filtered through 0.45 µm filter and analysed on Aminex column (Bio-Rad) using xylofuranose, xylotriose, xylobiose and xylose as standards. Biomass incubated with buffer and protein incubated with buffer were used as used as negative controls.

Additional files

Additional file 1. Table S1 Relative abundance of microbes in the enriched consortium compared to the original consortium. **Table S2** Carbohydrate Binding Modules (CBM) family proteins observed in the rice YSB gut consortium. **Table S3** Carbohydrate Esterases (CE) family proteins observed in the rice YSB gut consortium. **Table S4** Relative ranking of top 18 CAZy family proteins of different classes as observed in the rice YSB gut consortium based on emPAI score. **Figure S1** (a) Reduction in rice straw weight after 7 days of incubation with different gut consortium, with uninoculated medium as a control. (b) Glucose release after incubation of supernatant of different consortium with rice straw for 7 days. **Figure S2** Change in community structure as a result of enrichment. **Figure S3** Alkali treated (a) and untreated (b) rice straw hydrolysis and product analysis.

Abbreviations

YSB: yellow stem borer; MT: metatranscriptome; LC–MS/MS: liquid chromatography- tandem mass spectrometry; OTU: operational taxonomic unit; COG: cluster of orthologous group; CAZymes: carbohydrate- active enzymes; GH: glycosyl hydrolase; AA: auxiliary activities; CBM: carbohydrate- binding module; GT: glycosyl transferase; PL: polysaccharide lyase; ORF: open reading frame; Xyl: xylanase.

Authors' contributions

SSY, NCB and SMQM conceived the idea, designed and coordinated the study, provided expertise; SSY and RS written the manuscript and manuscript edited or modified time to time by NCB and JPB; RS and DE designed and performed YSB consortium cultivation, rice straw deconstruction and enzyme assays. RS and JPB prepared samples for metatranscriptome and metaexoproteome respectively; AAD performed the mass spectrometry and assisted with the MS/MS analysis. JPB, RS and MG analysed metatranscriptome and metaexoproteome data; RS and JPB prepared samples for microbial diversity analysis and data processed and analysed MG and AMA. RS and MS expressed xylanase gene in *E. coli* for functional validation. All authors reviewed the results. All authors read and approved the final manuscript.

Acknowledgements

Authors thank to Prof. Arvind M. Lali, ICT, Mumbai for providing untreated and alkali treated rice straw and Dr. Raj Bhatnagar for help in procuring rice stem borer.

1
2 **Ethics approval and consent to participate**

3
4 Not applicable.

5
6 **Consent for publication**

7
8 All authors agreed to publish this article.

9
10
11 **Competing interests**

12
13 The authors declare that they have no competing interests.

14
15
16
17 **Availability of supporting data**

18 All data supporting the conclusions of this article are included within the manuscript and in the
19 additional information.
20
21

22
23
24 **Funding**

25 This work was funded by Department of Biotechnology (DBT), Government of India Grants
26 BT/IN/INDO-UK/SuBB/21/SSY/2013 & BT/PB/Center/03/2011 and Biological Sciences
27 Research Council (BBSRC) Grants BB/K020358/1 & BB/I018492/1.
28
29
30
31
32
33
34
35
36
37
38
39
40
41
42
43
44
45
46
47
48
49
50
51
52
53
54
55
56
57
58
59
60
61
62
63
64
65

References

1. Saini JK, Saini R, Tewari L. Lignocellulosic agriculture wastes as biomass feedstocks for second-generation bioethanol production: concepts and recent developments. *3 Biotech*. 2015;5:337-53.
2. Sarkar N, Ghosh SK, Bannerjee S, Aikat K. Bioethanol production from agricultural wastes: an overview. *Renewable Energy*. 2012;37:19-27.
3. Lee J. Biological conversion of lignocellulosic biomass to ethanol. *J Biotechnol*. 1997;56:1-24.
4. Prasad S, Singh A, Joshi HC. Ethanol as an alternative fuel from agricultural, industrial and urban residues. *Resour Conserv Recycl*. 2007;50:1-39
5. Anwar Z, Gulfraz M, Irshad M. Agro-industrial lignocellulosic biomass a key to unlock the future bio-energy: a brief review. *J Radiat Res Appl Sci*. 2014;7:163-73.
6. Abbas A, Ansumali S. Global potential of rice husk as a renewable feedstock for ethanol biofuel production. *Bioenergy Res*. 2010;3:328-34.
7. Binod P, Sindhu R, Singhanian RR, Vikram S, Devi L, Nagalakshmi S, et al. Bioethanol production from rice straw: an overview. *Bioresour Technol*. 2010;101:4767-74.
8. Iqbal HM, Kyazze G, Keshavarz T. Advances in the valorization of lignocellulosic materials by biotechnology: an overview. *BioRes*. 2013;8:3157-76.
9. Satlewal A, Agrawal R, Bhagia S, Das P, Ragauskas AJ. Rice straw as a feedstock for biofuels: Availability, recalcitrance, and chemical properties. *Biofuels, Bioprod Biorefin*. 2018;12:83-107.
10. Han YW, Anderson AW. The problem of rice straw waste a possible feed through fermentation. *Econ Bot*. 1974;28:338-44.
11. Drake D, Nader G, Forero L. Feeding rice straw to cattle. UCANR Publications; 2002.
12. Gadde B, Bonnet S, Menke C, Garivait S. Air pollutant emissions from rice straw open field burning in India, Thailand and the Philippines. *Environ Pollut*. 2009;157:1554-8.
13. Mittal SK, Singh N, Agarwal R, Awasthi A, Gupta PK. Ambient air quality during wheat and rice crop stubble burning episodes in Patiala. *Atmos Environ*. 2009;43:238-44.
14. Satyendra T, Singh RN, Shaishav S. Emissions from crop/biomass residue burning risk to atmospheric quality. *Int Res J Earth Sci*. 2013;1:24-30.
15. Elkins JG, Raman B, Keller M. Engineered microbial systems for enhanced conversion of lignocellulosic biomass. *Curr Opin Biotechnol*. 2010;21:657-62.

16. Lynd LR, Laser MS, Bransby D, Dale BE, Davison B, Hamilton R, et al. How biotech can transform biofuels. *Nature Biotechnol.* 2008;26:169-72.
17. Shi W, Ding SY, Yuan JS. Comparison of insect gut cellulase and xylanase activity across different insect species with distinct food sources. *Bioenergy Res.* 2011;4:1-10
18. Krishnan M, Bharathiraja C, Pandiarajan J, Prasanna VA, Rajendhran J, Gunasekaran P. Insect gut microbiome—An unexploited reserve for biotechnological application. *Asian Pac J Trop Biomed.* 2014;4:S16-S21
19. Meyer AS, Rosgaard L, Sørensen HR. The minimal enzyme cocktail concept for biomass processing. *J Cereal Sci.* 2009;50:337-44.
20. Willis JD, Oppert C, Jurat- Fuentes JL. Methods for discovery and characterization of cellulolytic enzymes from insects. *Insect Science.* 2010;17:184-98
21. Lynd LR. Overview and evaluation of fuel ethanol from cellulosic biomass: technology, economics, the environment, and policy. *Ann Rev Energy Env.* 1996;21:403-65.
22. Pathak MD, Khan ZR. Insect pests of rice. *Int Rice Res Inst.* 1994.
23. Rubin EM. Genomics of cellulosic biofuels. *Nature.* 2008;454:841-45.
24. Watanabe H, Tokuda G. Cellulolytic systems in insects. *Annu Rev Entomol.* 2010;55:609-32.
25. Fischer R, Ostafe R, Twyman RM. Cellulases from insects. In *Yellow Biotechnology II 2013* (pp. 51-64). Springer, Berlin, Heidelberg.
26. Gomez LD, Steele- King CG, McQueen- Mason SJ. Sustainable liquid biofuels from biomass: the writing's on the walls. *New Phytol.* 2008;178:473-85.
27. Ghio S, Insani EM, Piccinni FE, Talia PM, Grasso DH, Campos E. GH10 XynA is the main xylanase identified in the crude enzymatic extract of *Paenibacillus* sp. A59 when grown on xylan or lignocellulosic biomass. *Microbiol Res.* 2016;186:16-26.
28. Wang W, Yan L, Cui Z, Gao Y, Wang Y, Jing R. Characterization of a microbial consortium capable of degrading lignocellulose. *Bioresour Technol.* 2011;102:9321-4.
29. Yan L, Gao Y, Wang Y, Liu Q, Sun Z, Fu B, et al. Diversity of a mesophilic lignocellulolytic microbial consortium which is useful for enhancement of biogas production. *Bioresour Technol.* 2012;111:49-54.
30. Alessi AM, Bird SM, Oates NC, Li Y, Dowle AA, Novotny EH, Bennett JP, Polikarpov I, Young JP, McQueen-Mason SJ, Bruce NC. Defining functional diversity for

lignocellulose degradation in a microbial community using multi-omics studies. *Biotechnol Biofuels*. 2018;11:166.

31. Reetha BM, Mohan M. Diversity of commensal bacteria from mid-gut of pink stem borer (*Sesamia inferens* [Walker])-Lepidoptera insect populations of India. *J Asia Pac Entomol*. 2018;21:937-43.
32. ul Haq I, Akram F, Khan MA, Hussain Z, Nawaz A, Iqbal K, Shah AJ. CenC, a multidomain thermostable GH9 processive endoglucanase from *Clostridium thermocellum*: cloning, characterization and saccharification studies. *World J Microbiol Biotechnol*. 2015;31:1699-710.
33. Huang X, Li Z, Du C, Wang J, Li S. Improved expression and characterization of a multidomain xylanase from *Thermoanaerobacterium aotearoense* SCUT27 in *Bacillus subtilis*. *J Agric Food Chem*. 2015;63:6430-9.
34. Yi Z, Su X, Revindran V, Mackie RI, Cann I. Molecular and biochemical analyses of CbCel9A/Cel48A, a highly secreted multi-modular cellulase by *Caldicellulosiruptor bescii* during growth on crystalline cellulose. *PloS One*. 2013;8:e84172.
35. Yokoyama H, Yamashita T, Morioka R, Ohmori H. Extracellular secretion of noncatalytic plant cell wall-binding proteins by the cellulolytic thermophile *Caldicellulosiruptor bescii*. *J Bacteriol*. 2014;196:3784-92.
36. Wang C, Dong D, Wang H, Müller K, Qin Y, Wang H, et al. Metagenomic analysis of microbial consortia enriched from compost: new insights into the role of Actinobacteria in lignocellulose decomposition. *Biotechnol Biofuels*. 2016;9:22.
37. Wongwilaiwalin S, Rattanachomsri U, Laothanachareon T, Eurwilaichitr L, Igarashi Y, Champreda V. Analysis of a thermophilic lignocellulose degrading microbial consortium and multi-species lignocellulolytic enzyme system. *Enzyme Microb Technol*. 2010;47:283-90.
38. Bashir Z, Kondapalli VK, Adlakha N, Sharma A, Bhatnagar RK, Chandel G, et al. Diversity and functional significance of cellulolytic microbes living in termite, pill-bug and stem-borer guts. *Sci Rep*. 2013;3:2558.
39. Klindworth A, Pruesse E, Schweer T, Peplies J, Quast C, Horn M, Glöckner FO. Evaluation of general 16S ribosomal RNA gene PCR primers for classical and next-generation sequencing-based diversity studies. *Nucleic Acids Res*. 2013;41:e1-e1.
40. Caporaso JG, Kuczynski J, Stombaugh J, Bittinger K, Bushman FD, Costello EK, et al. QIIME allows analysis of high-throughput community sequencing data. *Nat Methods*. 2010;7:335
41. Rognes T, Flouri T, Nichols B, Quince C, Mahé F. VSEARCH: a versatile open source tool for metagenomics. *Peer J*. 2016;4:e2584.

- 1
2
3
4
5
6
7
8
9
10
11
12
13
14
15
16
17
18
19
20
21
22
23
24
25
26
27
28
29
30
31
32
33
34
35
36
37
38
39
40
41
42
43
44
45
46
47
48
49
50
51
52
53
54
55
56
57
58
59
60
61
62
63
64
65
42. Edgar RC. UPARSE: highly accurate OTU sequences from microbial amplicon reads. *Nat Methods*. 2013;10:996-98.
 43. Edgar RC. Search and clustering orders of magnitude faster than BLAST. *Bioinformatics*. 2010;26:2460-1.
 44. McDonald D, Price MN, Goodrich J, Nawrocki EP, DeSantis TZ, Probst A, et al. An improved Greengenes taxonomy with explicit ranks for ecological and evolutionary analyses of bacteria and archaea. *ISME J*. 2012;6:610.
 45. Griffiths RI, Whiteley AS, O'Donnell AG, Bailey MJ. Rapid method for coextraction of DNA and RNA from natural environments for analysis of ribosomal DNA-and rRNA-based microbial community composition. *Appl Environ Microbiol*. 2000;66:5488-91.
 46. Quast C, Pruesse E, Yilmaz P, Gerken J, Schweer T, Yarza P, Peplies J, Glöckner FO. The SILVA ribosomal RNA gene database project: improved data processing and web-based tools. *Nucleic Acids Res*. 2013;41:D590-6.
 47. Langmead B, Salzberg SL. Fast gapped-read alignment with Bowtie 2. *Nat Methods*. 2012;9:357.
 48. Grabherr MG, Haas BJ, Yassour M, Levin JZ, Thompson DA, Amit I, et al. Full-length transcriptome assembly from RNA-Seq data without a reference genome. *Nat Biotechnol*. 2011;29:644-52.
 49. Kern M, McGeehan JE, Streeter SD, Martin RN, Besser K, Elias L, Eborall W, Malyon GP, Payne CM, Himmel ME, Schnorr K. Structural characterization of a unique marine animal family 7 cellobiohydrolase suggests a mechanism of cellulase salt tolerance. *Proc Natl Acad Sci U.S.A.* 2013;110:10189-94.
 50. Rice P, Longden I, Bleasby A. EMBOSS: the European molecular biology open software suite. *Trends Genet*. 2000;16:276-7.
 51. Yin Y, Mao X, Yang J, Chen X, Mao F, Xu Y. dbCAN: a web resource for automated carbohydrate-active enzyme annotation. *Nucleic Acids Res*. 2012;40:W445-51.
 52. Nielsen H, Engelbrecht J, Brunak S, Von Heijne G. Identification of prokaryotic and eukaryotic signal peptides and prediction of their cleavage sites. *Protein Eng*. 1997;10:1-6.
 53. Adlakha N, Rajagopal R, Kumar S, Reddy VS, Yazdani SS. Synthesis and characterization of chimeric proteins based on cellulase and xylanase from an insect gut bacterium. *Appl Environ Microbiol*. 2011;77:4859-66.

Table 1 Bacterial diversity in rice YSB gut consortium

S. No.	Name of Phylum	Number of Genus
1	Proteobacteria	101
2	Bacteroidetes	29
3	Actinobacteria	17
4	Firmicutes	14
5	Verrucomicrobia	6
6	Planctomycetes	3
7	Euryarchaeota	2
8	Acetobacteria	1
9	Chloroflexi	1
10	Armatimonadetes	1
11	Woesearchaeota	1
12	Crenarchaeota	1
13	Aquificae	1
Total genus		178

Table 2 CAZy families detected in rice YSB metaexoproteome

Nature of Domains	Number of Domains Identified
Carbohydrate-Binding Modules (CBMs)	95
Glycoside Hydrolases (GHs)	55
Carbohydrate Esterases (CEs)	21
Glycosyl Transferases (GTs)	19
Auxiliary Activities (AAs)	16
Surface Layer Homology (SLH)	3
Polysaccharide Lyases (PLs)	2
Dockerin	1
Total	212

Table 3 Relative abundance of top 20 GH family proteins observed in the rice YSB gut consortium

Relative abundance rank	Total emPAI score [#]	Family	Bound fraction	Supernatant	Substrate
1	12.86	GH10	Yes	Yes	Hemicellulose deconstruction
2	10.67	GH9	Yes	Yes	Cellulose deconstruction
3	8.24	GH48	Yes	No	Cellulose deconstruction
4	4.38	GH109	Yes	Yes	Glycoprotein deconstruction
5	4.21	GH5	Yes	No	Cellulose & hemicellulose deconstruction
6	3.58	GH6	Yes	No	Cellulose deconstruction
7	1.28	GH74	Yes	No	Cellulose & hemicellulose deconstruction
8	1.04	GH94	Yes	No	Starch deconstruction
9	0.93	GH3	Yes	No	Cellulose & hemicellulose deconstruction
10	0.65	GH13	Yes	No	Starch deconstruction
11	0.64	GH120	Yes	No	Hemicellulose deconstruction
12	0.54	GH11	Yes	No	Hemicellulose deconstruction
13	0.37	GH15	Yes	No	Starch deconstruction
14	0.26	GH26	Yes	No	Hemicellulose deconstruction
15	0.24	GH39	Yes	No	Hemicellulose deconstruction
16	0.23	GH33	No	Yes	Glycoprotein deconstruction
17	0.12	GH43	Yes	No	Hemicellulose deconstruction
18	0.10	GH20	Yes	No	Peptidoglycan deconstruction
19	0.06	GH62	Yes	No	Hemicellulose deconstruction
20	0.03	GH2	Yes	No	Hemicellulose deconstruction

[#] Total emPAI scores are based on the sum of emPAI scores all entries for a given family of glycoside hydrolases

Table 4 Architecture of multi-domain CAZymes identified in the rice YSB gut consortium

S. No.	YSB contig	ORF of the YSB contig	Domain architecture of translated proteins
1	c58099_g3_i2	c58099_g3_i2_3	CBM2/CBM3/GH9
2	c65180_g3_i1	c65180_g3_i1_1	AA2/AA2/AA2
3	c66145_g1_i1	c66145_g1_i1_1	CBM20/CBM20/CBM20
4	c61378_g1_i1	c61378_g1_i1_7	CBM44/CBM44/CBM44/CBM44
5	c17840_g1_i1	c17840_g1_i1_6	CBM44/CBM44/CBM44/CBM44
6	c17840_g1_i1	c17840_g1_i1_7	CBM44/CBM44/CBM44/CBM44
7	c17840_g1_i1	c17840_g1_i1_8	CBM44/CBM44/CBM44/CBM44
8	c8173_g2_i1	c8173_g2_i1_1	CBM44/CBM44/CBM44/CBM44/CBM44
9	c66028_g1_i1	c66028_g1_i1_14	CBM44/CBM44/CBM44/CBM44/CBM44/CBM44
10	c61637_g1_i1	c61637_g1_i1_4	CBM44/CBM44/CBM44/CBM44/CBM44/CBM44/CBM44/ CBM44/CBM44/CBM44/CBM44
11	c175818_g1_i1	c175818_g1_i1_1	CE1/CE1
12	c58415_g1_i1	c58415_g1_i1_1	CE1/PL22
13	c15588_g1_i1	c15588_g1_i1_2	AA2/AA2/AA2
14	c61645_g1_i2	c61645_g1_i2_15	CBM13/CBM13
15	c65434_g3_i1	c65434_g3_i1_8	CBM44/CBM44
16	c234089_g1_i1	c234089_g1_i1_4	CBM44/CBM44/CBM44/CBM44

YSB_Contigs: gene sequence obtained as a result of *de novo* assembly.

ORF of the contigs: translated protein from different open reading frame (ORF) of the respective YSB contig.

Figure legends

Fig. 1 Rice yellow stem borer gut microbial community structure at the level of Phylum. Relative abundance of phylum in the (a) gut consortium and in the (c) enriched consortium. (b) Total number of Operational Taxonomy Unit (OTU) in the gut consortium and in the enriched consortium.

Fig. 2 Rice yellow stem borer gut microbial community structure at the level of genus. Relative abundance of genus in the (a) gut consortium and in the (c) enriched consortium. Top 20 genera in terms of their unique OTUs detected in the (b) gut consortium and in the (d) enriched consortium.

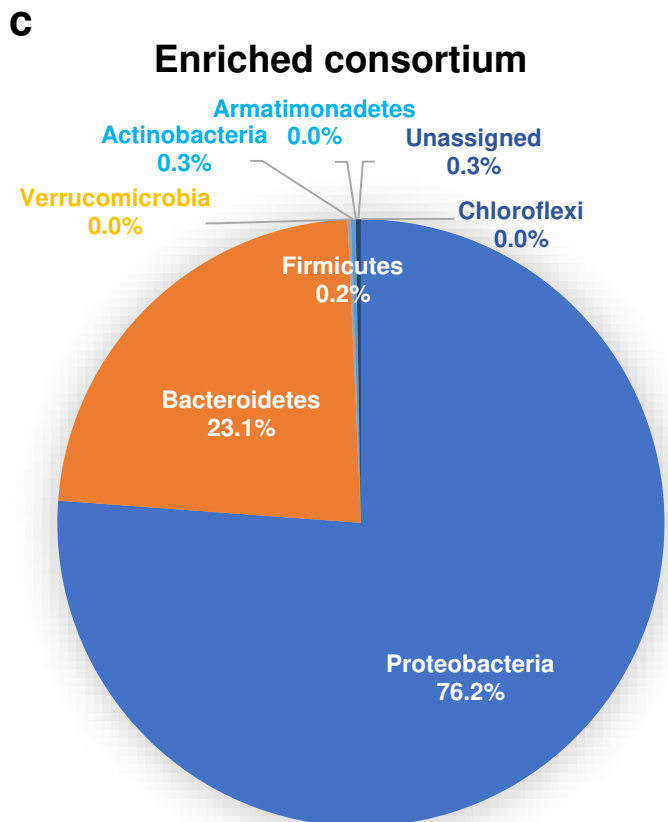
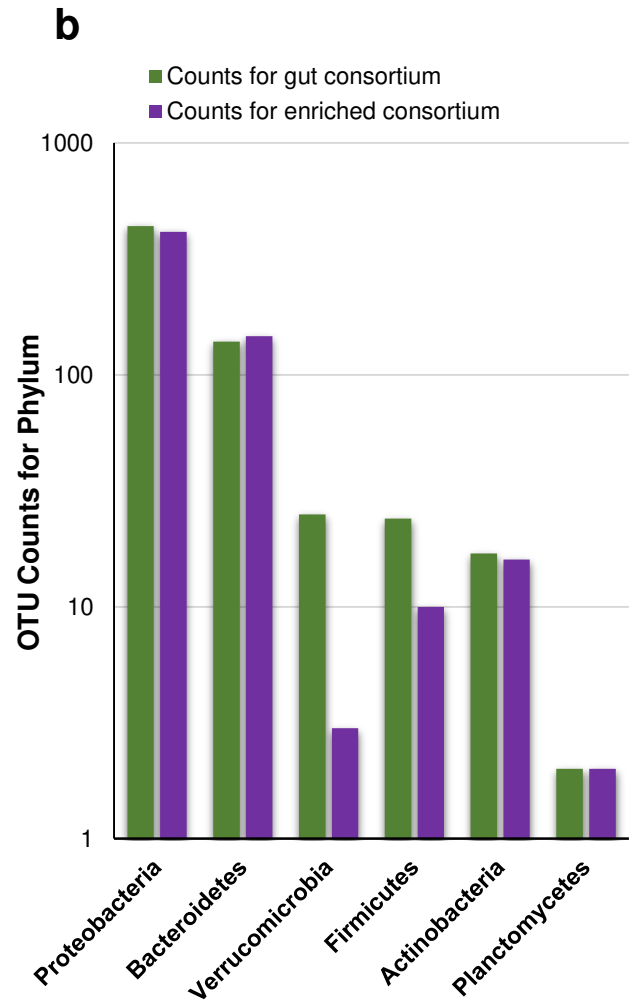
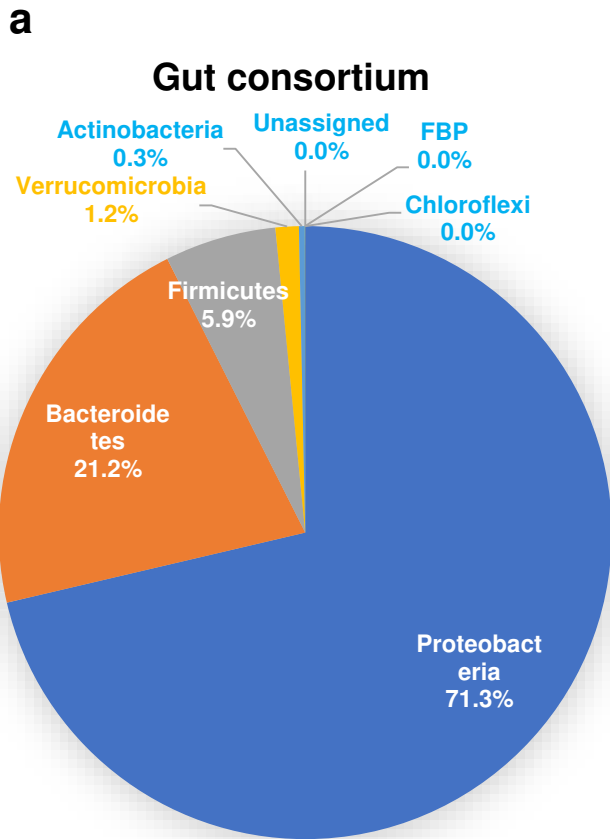
Fig. 3 Evaluation of different culture conditions for biomass degrading enzyme production. Cultures were grown under various conditions, and secretory proteins (a) and cell bound protein extract (b) were evaluated for release of glucose and xylose using CMC and xylan as substrates respectively. Data in (a) and (b) represent mean \pm SD. Abbreviations: TSB – Tryptic Soya Broth; YE – Yeast Extract

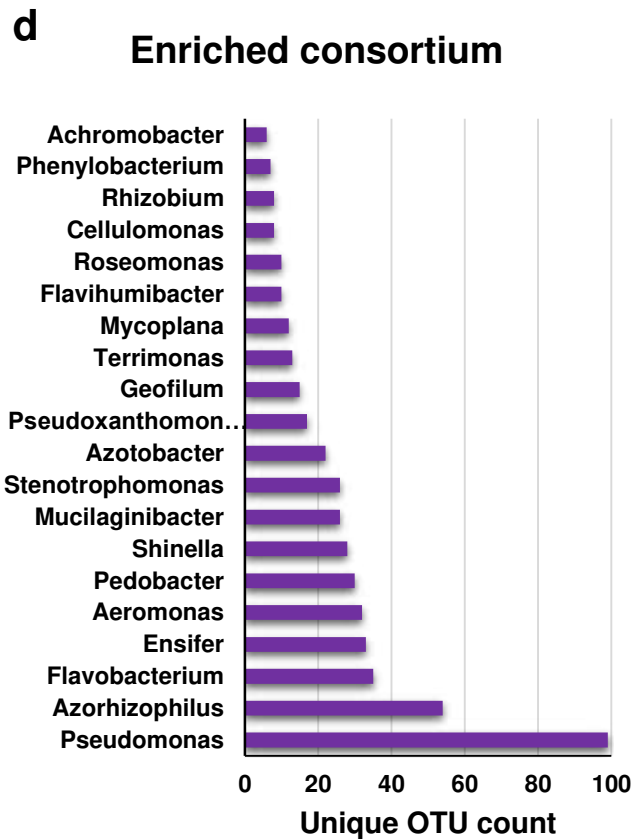
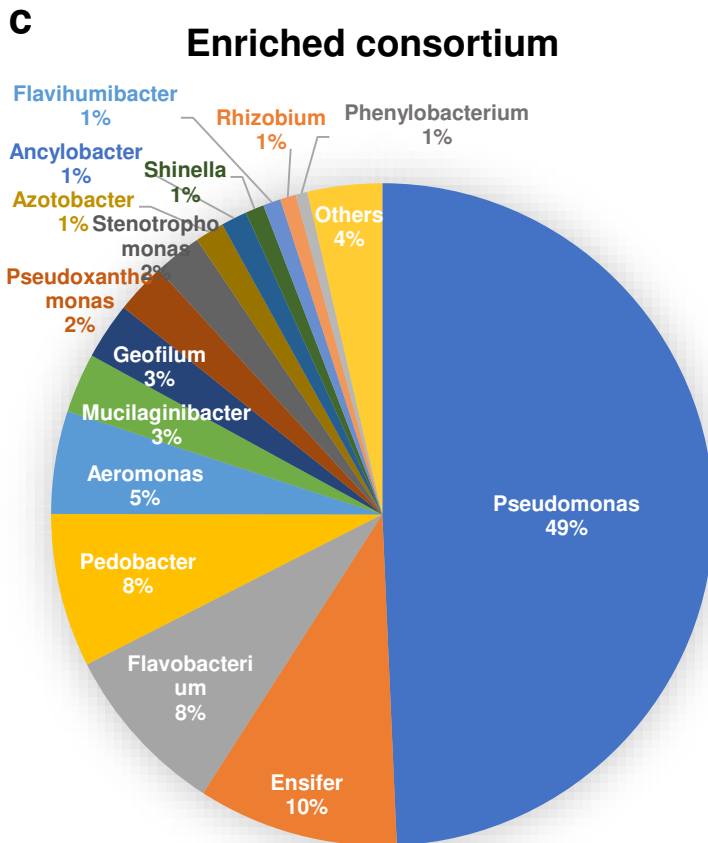
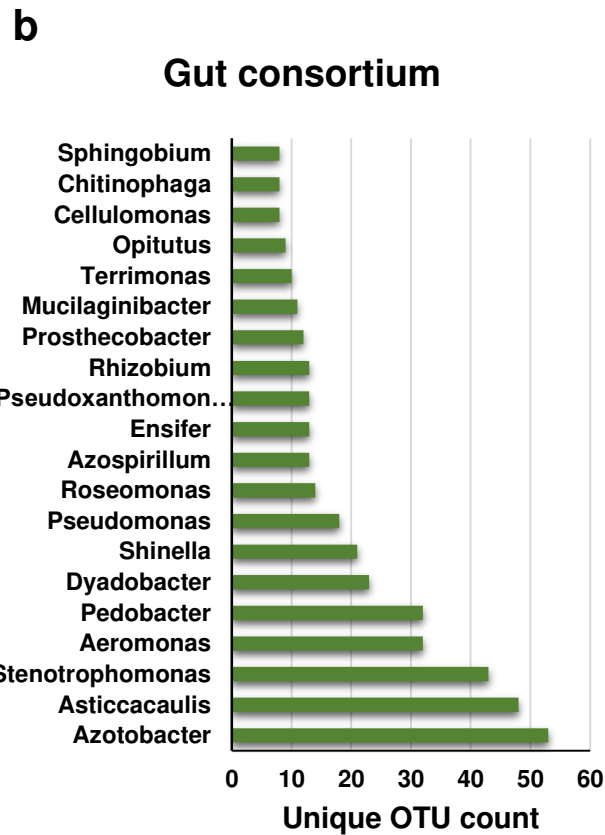
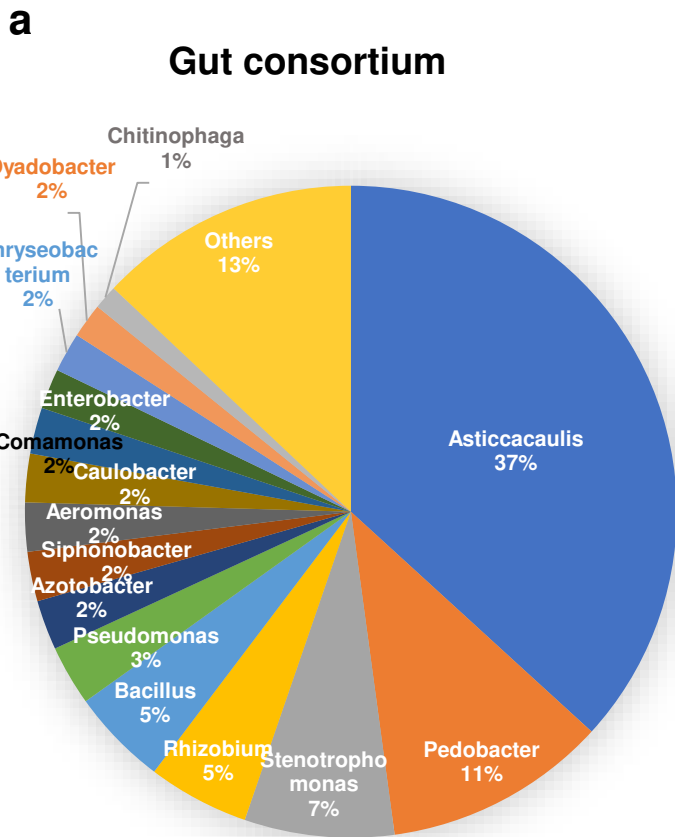
Fig. 4 Enrichment of rice straw deconstructing YSB gut microbial community and assessment of available enzymes and biomass degrading ability. (a) The microbial community was passaged for one year on the rice straw containing medium and analyzed for various features. (b) Reduction in rice straw weight after incubation with either enriched consortium or original symbionts; (c) CMCase activity shown by the supernatant and cell bound protein fraction of RSBGC on plate containing CMC and trypan blue dye; (d) CMCase and xylanase assay of RSBGC proteins on zymogram; (e) Morphologically different colonies grown as a result of plating on YEB agar plate.

Fig. 5 Venn Diagram showing the proportion of CAZy assignments observed exclusively in the Bound Fraction, Supernatant or in both fractions

Fig. 6 Dynamics of changes in different classes of CAZy families upon cultivation on rice straw for 20 days. Hierarchical clustering of CAZy family proteins detected at 4th, 7th, 13th and 20th day of cultivation in the bound (a) and supernatant (b) fractions. (c) Comparison of the expression level of various CAZy classes in the 30 high expressed contigs at each time points.

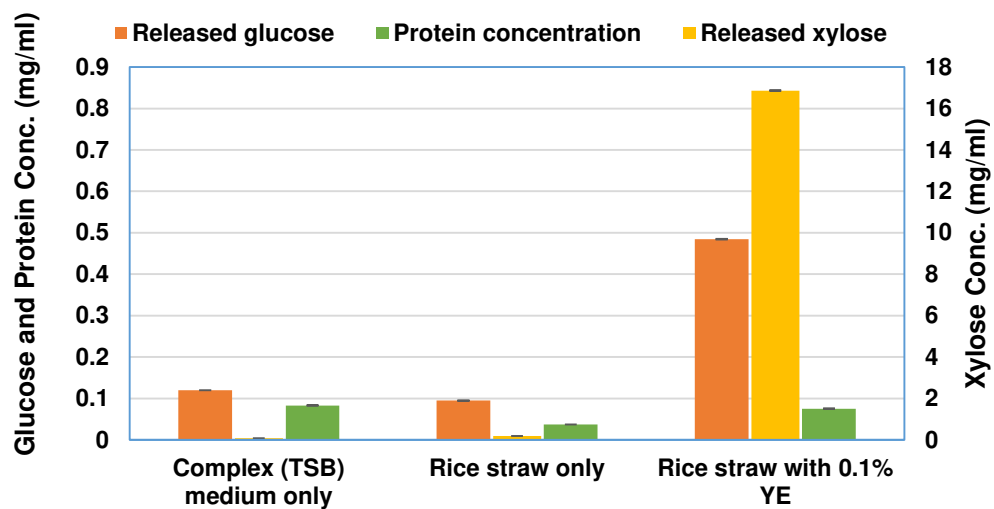
Fig. 7 Annotation, expression and characterization of xylanase from the enriched consortium derived from rice stem borer gut. (a) Schematic representation of various modules present in the xylanase polypeptide; SP – Signal Peptide, GH10 – Glycoside Hydrolase of family 10, CBM2 – Carbohydrate Binding Modules of family 2. (b) Cloning of xylanase ORF without the SP in the expression vector pET30a at the *Nde*I and *Hind*III restriction sites to derive the expression of xylanase with the help of T7 promoter. (c) Xylanase protein purification. Lane 1, uninduced total cellular protein; lane 2, Induced total cellulase protein and Lane 3, Purified xylanase protein after metal affinity chromatography. (d) Optimal temperature and (e) optimal pH for activity of xylanase



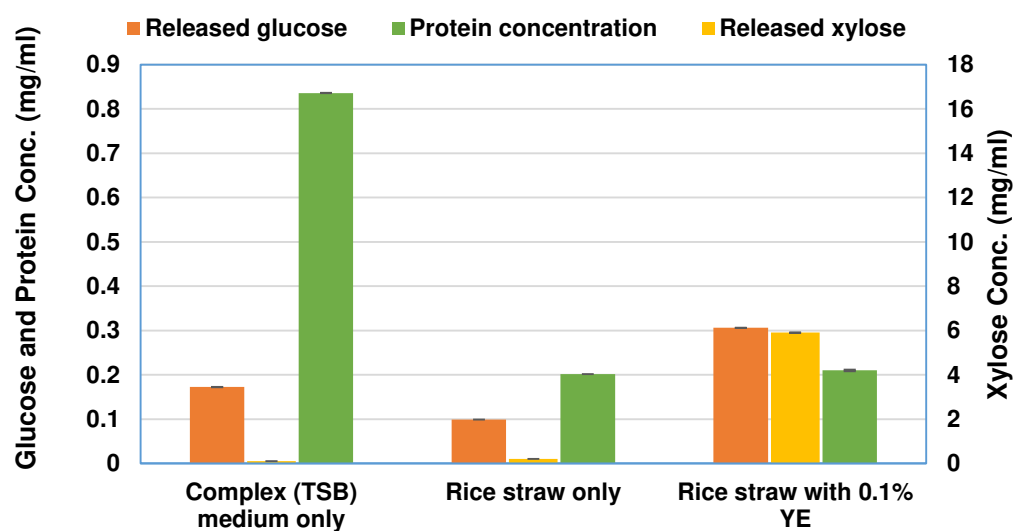


a

Secreted Proteins

**b**

Cellbound Proteins



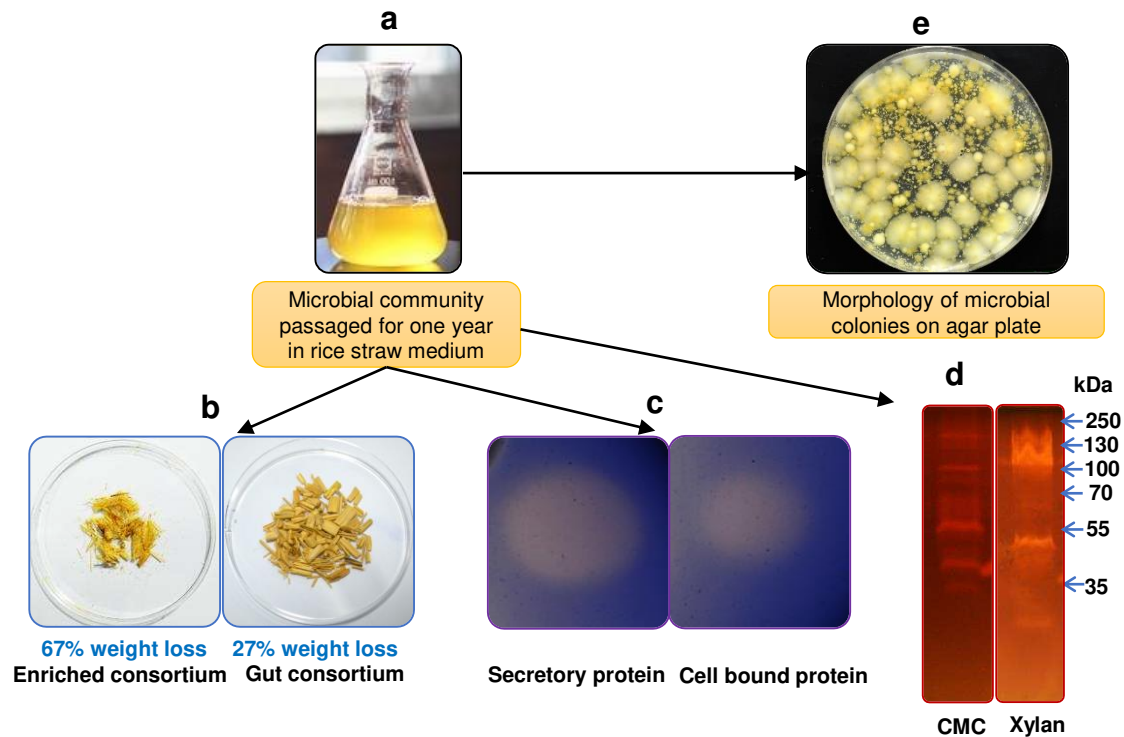
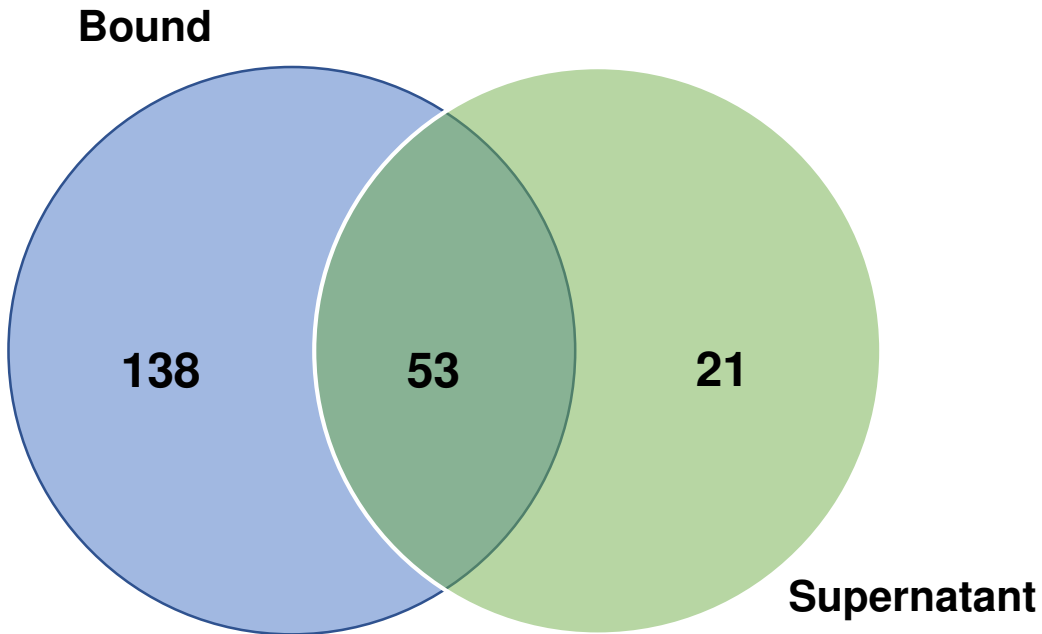
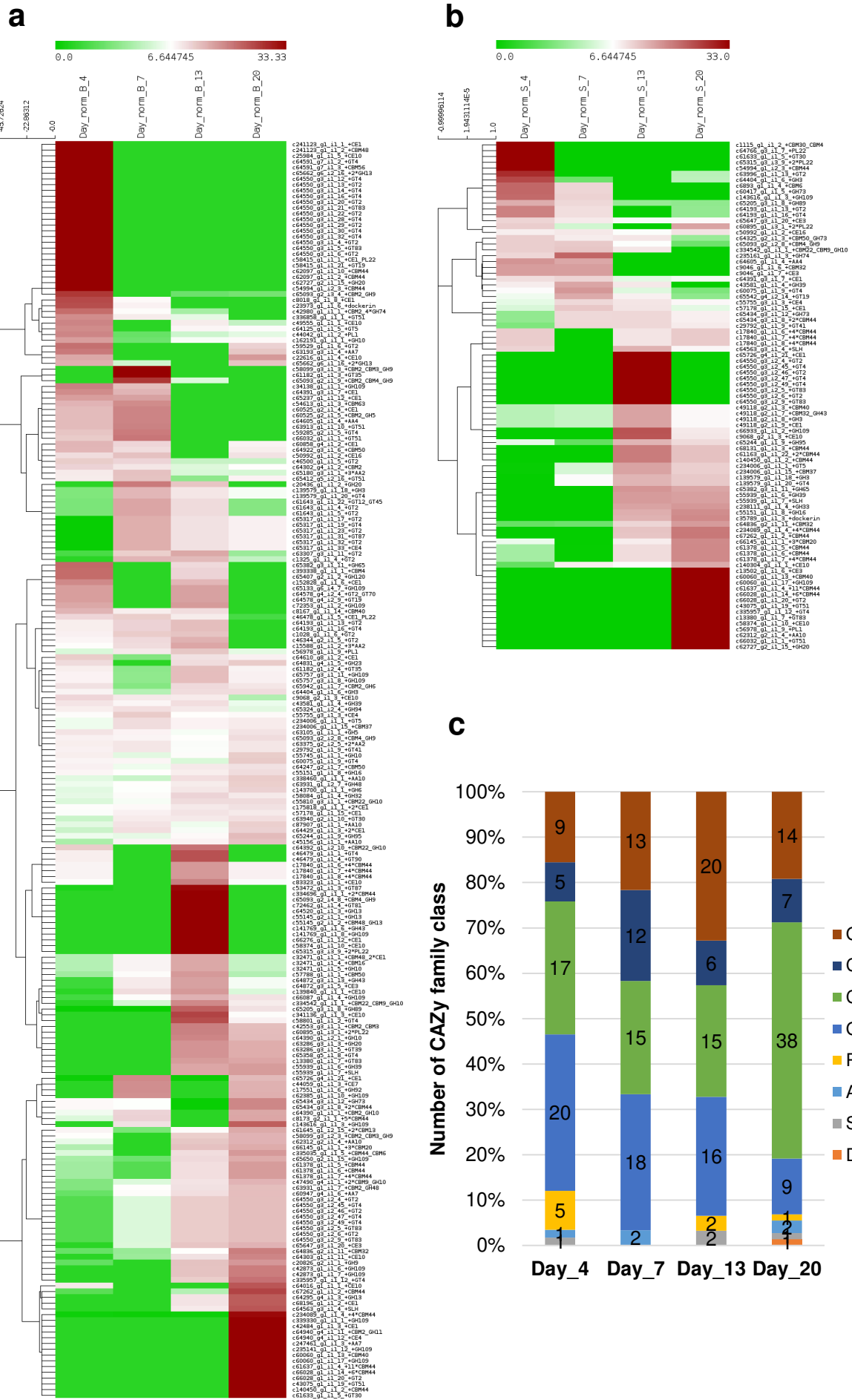
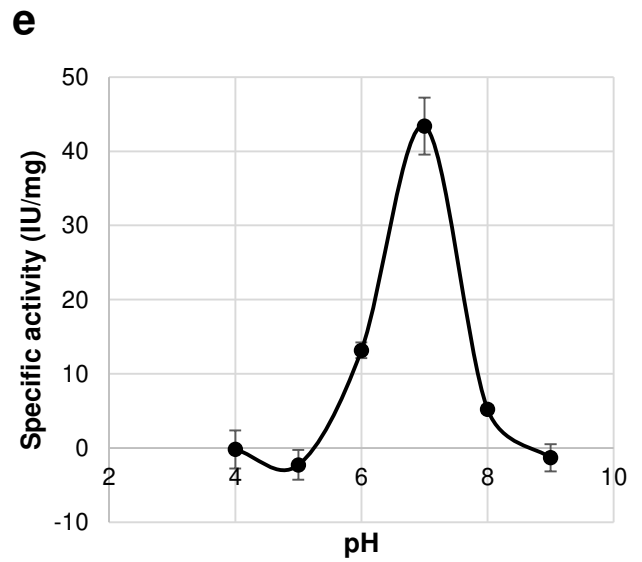
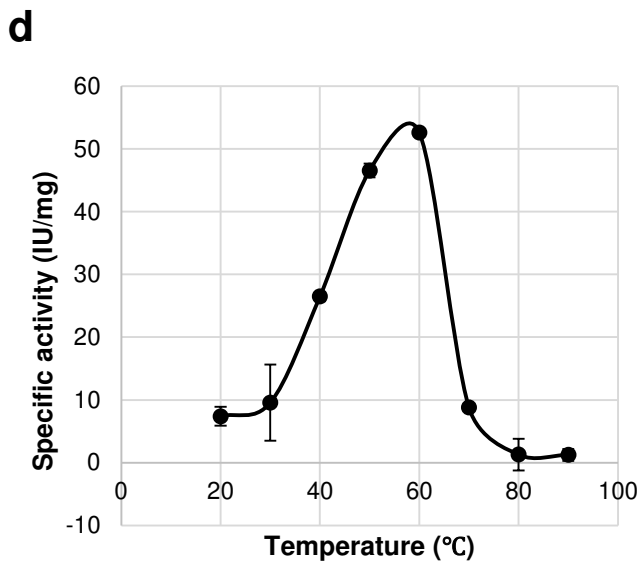
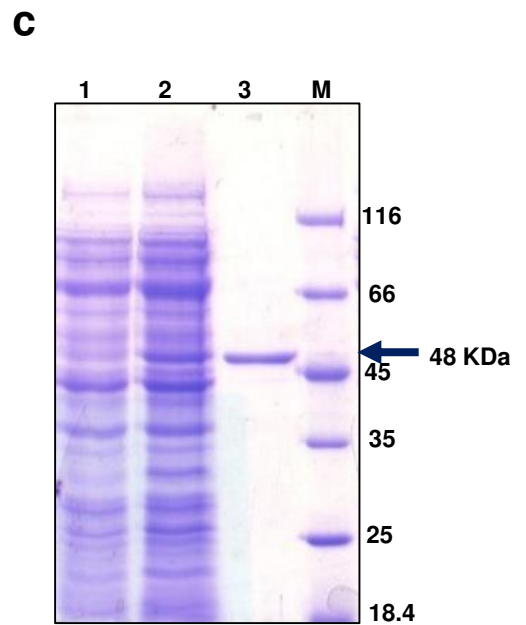
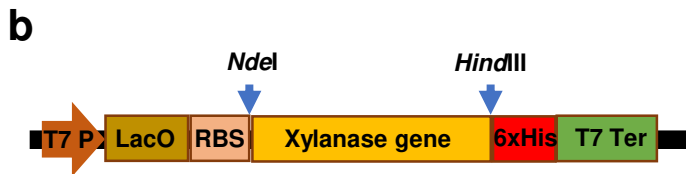
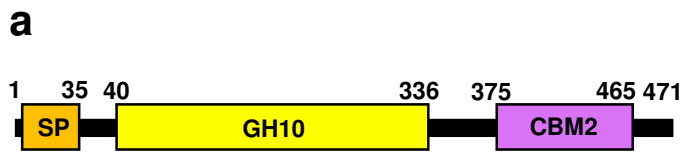


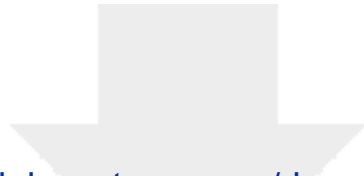
Figure 5

[Click here to access/download;Figure;Figure 5.pptx](#) 

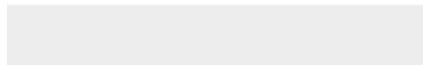








Click here to access/download
Supplementary Material
2nd Revised Additional file 1.pdf



Dr. Rajeev Kumar
Editor
Biotechnology for Biofuels

Dear Dr. Rajiv Kumar,

We have provided response to the query of Reviewer #2 as well conducted experiments as per the advice given by the reviewer. We hope that the revised manuscript is suitable for publication in *Biotechnology for biofuels*.

With kind regards,

Syed Shams Yazdani
Group Leader, Microbial Engineering Group
Coordinator, DBT-ICGEB Centre for Advanced Bioenergy Research
International Centre for Genetic Engineering and Biotechnology, New Delhi