



This is a repository copy of *Global wildlife trade across the tree of life*.

White Rose Research Online URL for this paper:
<http://eprints.whiterose.ac.uk/152071/>

Version: Supplemental Material

Article:

Scheffers, B.R., Oliveira, B.F., Lamb, I. et al. (1 more author) (2019) Global wildlife trade across the tree of life. *Science*, 366 (6461). pp. 71-76. ISSN 0036-8075

<https://doi.org/10.1126/science.aav5327>

This is the author's version of the work. It is posted here by permission of the AAAS for personal use, not for redistribution. The definitive version was published in *Science: Global wildlife trade across the tree of life* BY BRETT R. SCHEFFERS, BRUNNO F. OLIVEIRA, IEUAN LAMB, DAVID P. EDWARDS. *SCIENCE* 04 OCT 2019 : 71-76, <https://doi.org/10.1126/science.aav5327>

Reuse

Items deposited in White Rose Research Online are protected by copyright, with all rights reserved unless indicated otherwise. They may be downloaded and/or printed for private study, or other acts as permitted by national copyright laws. The publisher or other rights holders may allow further reproduction and re-use of the full text version. This is indicated by the licence information on the White Rose Research Online record for the item.

Takedown

If you consider content in White Rose Research Online to be in breach of UK law, please notify us by emailing eprints@whiterose.ac.uk including the URL of the record and the reason for the withdrawal request.



eprints@whiterose.ac.uk
<https://eprints.whiterose.ac.uk/>

1
2
3
4
5
6
7
8
9
10
11
12
13
14
15
16
17
18
19
20
21
22



Supplementary Materials for
Global wildlife trade across the tree of life

Brett R. Scheffers, Brunno F. Oliveira, Ieuan Lamb, David P. Edwards.

correspondence to: brett.scheffers@ufl.edu, david.edwards@sheffield.ac.uk

- This PDF file includes:**
- Materials and Methods
 - Figs. S1 to S8
 - Tables S1 to S9
 - References 39 to 64

23 **Materials and Methods**

24 Wildlife trade data

25 We compiled information on traded birds, mammals, amphibians, and squamate reptiles using
26 two of the most comprehensive data sources on wildlife trade and threat: the Convention on
27 International Trade in Endangered Species of Wild Fauna and Flora (CITES) and the
28 International Union for Conservation of Nature Red list of Threatened Species (IUCN Red list).
29 CITES is an international agreement between governments that monitors, restricts and bans
30 international trade in wild animals and plants. CITES lists of traded species were downloaded 1st
31 of January 2017 from (34). A third organization, TRAFFIC, plays an active role in monitoring
32 the global trade of wildlife. However, TRAFFIC does not have a comprehensive list of traded
33 species nor does it have an online platform from which we can autonomously collate data (see
34 below). TRAFFIC does, however, work closely with CITES to inform their listing of species in
35 CITES Appendices. Therefore, TRAFFIC information on traded species should be captured
36 (intrinsically) by our analysis of CITES appendices (below). CITES lists species in three
37 appendices according to the levels or types of protection they need. We included species listed in
38 any of the three CITES Appendices. We identified species traded from the IUCN threat
39 classification scheme as those under the category hunting & collecting terrestrial animals, and
40 subcategory intentional use. This includes hunting and the collection of terrestrial animals
41 (including those living within terrestrial/aquatic boundary). The IUCN threat classification
42 scheme was accessed on the 21st of February 2019, through the IUCN API platform using the
43 R (36) package rredlist (37). We further derived a list of key search words that characterize trade
44 (Table S9), and used an autonomous search algorithm to identify species with keywords in their
45 assessment. To confirm that keywords were indeed related to a description of trade, we carefully
46 read the IUCN Red List assessment for all species detected by our search algorithm. The
47 reliability of CITES and IUCN data quality might be phylogenetically and spatially explicit, but
48 this uncertainty is inherent of any study conducted at this scale.

49 Given the extensive list of purposes wildlife species are traded for (38), we classified
50 species based on whether they are traded dead or alive. Species traded as dead products are often
51 used for commercial bushmeat, trophy hunting, clothing, medicine, or religion. In contrast,
52 species traded alive are those commercialized as pets, for expositions, circus, or zoological
53 gardens. For simplicity, we refer to species traded dead as products, and traded alive as pets.

54 Spatial analyses

55 We superimposed IUCN range maps of bird, mammal, and amphibian species in a 110 x 110 km
56 global grid under a cylindrical equal-area projection, and recorded species presence/absence
57 within each grid cell. Range maps from reptiles were obtained from the recently available
58 assessment provided by Roll et al. (39) and interpolated using the same resolution as for the
59 other vertebrate groups. A species was considered as present in a grid cell if its distribution range
60 fell within the cell boundaries. Coastal cells with < 30% land cover and species considered
61 extinct were excluded from our analysis. We determined wildlife trade richness as the number of
62 traded species within each grid cell. Likewise, pet-trade richness and product-trade richness was
63 determined as the number of species traded as pets or products within a grid cell, respectively.
64 We further assembled species occurring in each of the world's biomes (40) and biogeographical
65 realms (41), and calculated their trade richness, pet-trade richness, and product-trade richness in
66 order to compare trade differences across biologically meaningful regions.
67

68 We defined hotspots as the upper 25% and upper 5% richest cells for traded species. We
69 assessed the correlation between spatial patterns in total species richness, traded species richness,
70 and threatened species richness using Pearson's correlation coefficient. We calculated the
71 Clifford's modified t-test to obtain unbiased degrees of freedom of correlation coefficients, while
72 controlling for spatial autocorrelation. Modified t-tests were calculated using the R package
73 SpatialPack (42). We inspected for geographic differences in trade type (products versus pets) by
74 plotting the number of species traded by products against the total number of species traded as
75 pets for each cell. Points falling above a slope of 1 indicate areas where more species traded as
76 products than pets.

77 78 Phylogenetic analyses

79 We used the most comprehensive time-calibrated species-level phylogenetic trees available for
80 each vertebrate group. For birds, we used a phylogenetic tree from Jetz et al. (43), containing
81 9,993 species of birds, and overlaid on the Hackett family-level backbone, which is the most
82 recent avian topology available. For mammals, we used a phylogenetic tree from Kuhn et al.
83 (44), which builds upon a prior phylogeny from Bininda-Emonds et al. (45) and Fritz et al. (46),
84 and contains 5,020 species. For amphibians, we used a phylogenetic tree from Jetz and Pyron
85 (47), containing nearly all extant amphibian diversity (7,239 species). For reptiles, we used fully
86 sampled phylogenies containing 9,574 squamate (amphisbaenas, lizards, and snakes) species
87 from Tonini et al. (48). We did not include testudine (turtle), crocodylia (crocodiles) and
88 Rhynchocephalia (tutaras) due to limited phylogenetic data. These groups represent less than 5%
89 of the total reptile diversity. Each one of these supertrees are available online as sets of 10,000
90 trees. From each set of 10,000 trees, we obtained one maximum clade credibility (MCC) tree,
91 and used these MCC trees in downstream analyses. MCC were obtained using the maxCladeCred
92 function from the R package phangorn (49) version 2.4.

93 We tested for phylogenetic signal in wildlife trade (i.e., whether closely related species
94 are more traded than random) using the D-statistic (16), which was explicitly developed for
95 testing phylogenetic signal in discrete (binary) traits. The D-statistic is the sum of state changes
96 along the edges of a phylogeny. Few state changes indicate that a trait is phylogenetically
97 conserved, whereas numerous state changes indicate that a trait is labile (16). To test the
98 significance of observed phylogenetic signal, we contrasted observed D-values against simulated
99 D-values based on a random and a Brownian motion mode of evolution (16). D-statistics and
100 null models were estimated using the phylo.d function in the R package caper (50).

101 We assessed the correlation between trade and traits using two methods. First, we used
102 phylogenetic ANOVA (51) to test whether traded species possess traits that are different to the
103 ones of non-traded species. Second, we used phylogenetic logistic regression (52) to test whether
104 traits influence the probability of a species being traded. We used body size and evolutionary
105 distinctiveness as traits. Body size is a widely used proxy for many species ecological and life
106 history traits. Evolutionary distinctiveness measures the evolutionary isolation of lineages (19,
107 53), thus evolutionarily distinct species may express nonrandom phenotypes (19). Body size data
108 for amphibians were extracted from AmphiBIO as snout-to-vent length (millimeter) because
109 body mass was only available for a few species (54) and for reptiles we used Slavenko's et al.
110 (55) data on body mass (grams). We used the R package missForest (56) to impute missing
111 information in amphibian body size including foraging strategy, offspring per year, breeding
112 strategy, and phylogenetic eigenvectors (57) as predictor variables. For reptiles, we used only
113 body size and phylogenetic eigenvectors as these were the traits available. Phylogenetic

114 eigenvectors were calculated using the R package PVR (58). Body size data for birds and
115 mammals were extracted from Elton traits (59), containing body mass (grams) with interpolated
116 missing values based on taxonomy. We calculated evolutionary distinctiveness using the fair
117 proportion metric proposed by Isaac et al. (53), in the R package picante (60).

118 To anticipate the risk of currently not traded species becoming threatened by trade in the
119 future, we identified relative probabilities/risk of future trade based on 1) phylogeny and 2)
120 species traits. Here, we used two approaches: First, we identified for each non-traded species the
121 proportion of all species traded in their respective family (a high proportion of related species
122 that are traded equates to a high future risk of trade). Second, for each non-traded species we
123 averaged its phylogenetic distance with the ten closest related species that are traded (a high
124 phylogenetic relatedness with species that are traded equates to a high future risk of trade). We
125 normalized the phylogenetic distances between 0 and 1 thus reflective of the probability of being
126 traded in the future. For traits, we applied a phylogenetic logistic regression to predict the
127 probability of a species becoming traded based on their body size, as well as their evolutionary
128 distinctiveness, while controlling the effect of phylogeny dependency.

129

130 Traded Species List

131 We formed our list of traded terrestrial vertebrates (birds, mammals, amphibians, and squamate
132 reptiles) by using a keyword search, based on 65 terms (see Table S9), of all text listed under
133 each species IUCN assessment. This search included all content from each species assessment
134 but it mainly applied to the following sections: Assessment information, Population, Use and
135 Trade (if present), Threats, and Conservation Actions.

136 First, we performed a set of pilot searches in order to refine our keyword list. At each
137 round of pilot searches, we selected 200 species from each taxonomic group at random (total of
138 800 species), and read through the assessment of each species containing a keyword. We refined
139 our keyword list at each round of pilot searches by removing commonly erroneous keywords
140 (e.g. bone, teeth, horn, all of which often relate to description of species morphologies but not
141 necessary animal parts traded) and/or by adding new keywords that were commonly observed on
142 the species' assessments to describe trade. To maximize our balance of search effort and data
143 collection, we included filters to remove species containing certain keywords or phrases that
144 describe species that are not traded. For example, many species contain the section "use and
145 trade" on their IUCN assessment without actually being traded. We therefore removed species
146 when this was the only term returned. Moreover, many species contain the phrase "this species is
147 not known to be traded", and those were also filtered out. After 10 refinements (pilot searches),
148 our keyword algorithm reached accuracy of 85% of species correctly identified as traded. In
149 order to guarantee the accuracy of our keyword search, and determine if a species is traded, we
150 read each IUCN assessment of all species flagged with a keyword as traded to ensure that
151 keywords accurately indicate animal trade. This mining process allowed us to identify an extra
152 829 species (184 birds, 215 mammals, 132 amphibians, 298 reptiles) that are not listed by CITES
153 nor IUCN under the category hunting & collecting terrestrial animals, and
154 subcategory intentional use.

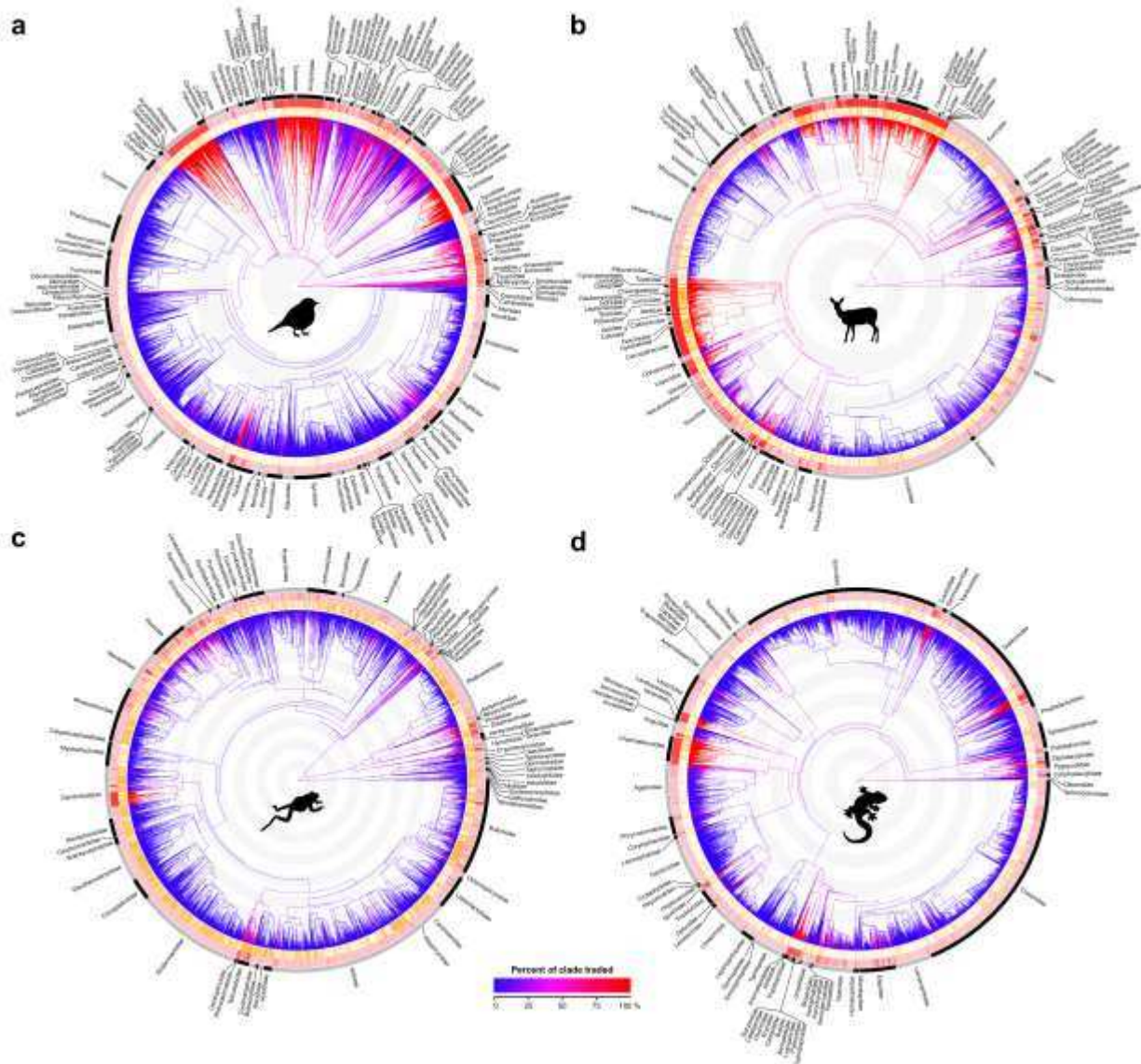
155

156 **Supplementary figures**

157

158

159



160

161

162 **Fig. S1. Wildlife trade occurs across the tree of life, but some clades are more heavily**

163 **targeted than others.** Phylogeny branches for birds (a), mammals (b), amphibians (c) and

164 reptiles (d) are colored to represent the impact of wildlife trade up-to each node (i.e., clade).

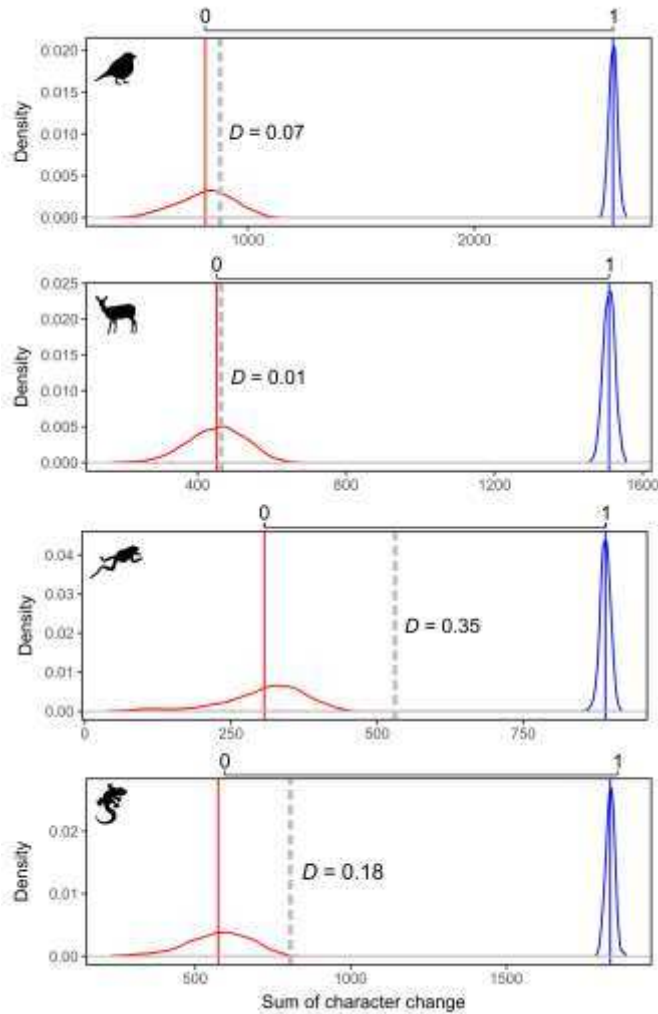
165 Warmer colors (red) represent heavily traded branches (i.e., high percent of traded species). All

166 families are labelled. The first outer band indicates threatened (VU, EN, and CR; orange) and

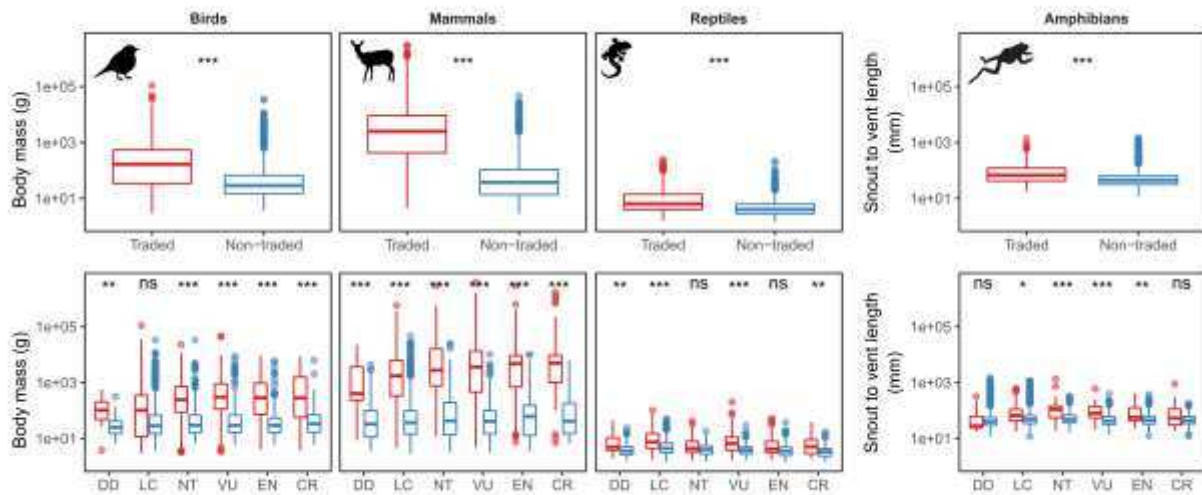
167 non-threatened species (LC and NT; yellow). The second outer band indicates traded (red) and

168 non-traded (pink) species. Gray concentric circles scale a 20 million year period.

169

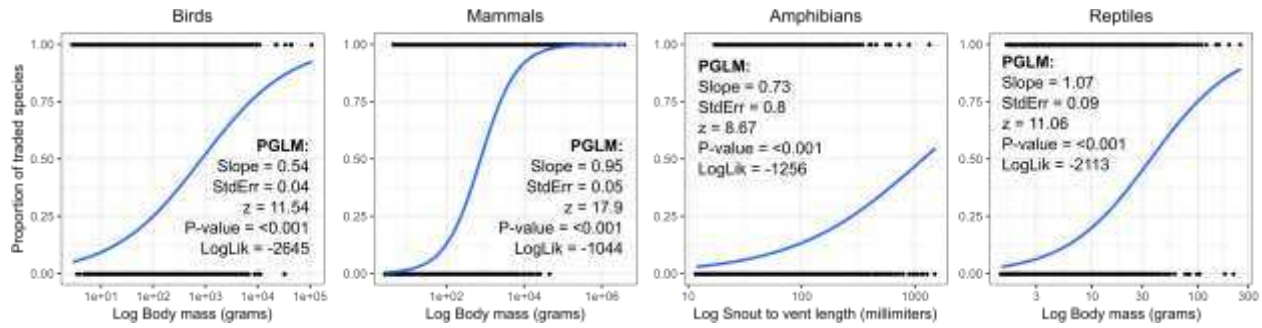


170
 171 **Fig. S2. Phylogenetic signal in wildlife trade for amphibians, birds, mammals and reptiles.**
 172 Mammals and birds show a signal as strong as expected under a Brownian motion model of
 173 evolution indicating high levels of phylogenetic clustering. The D -statistic is the sum of state
 174 changes along the edges of a phylogeny. Continuous vertical lines represent the mean of random
 175 D -statistic values obtained from two null models: Brownian motion (red) and phylogenetic
 176 randomness (blue). Dashed gray lines represent observed D -statistics.
 177
 178



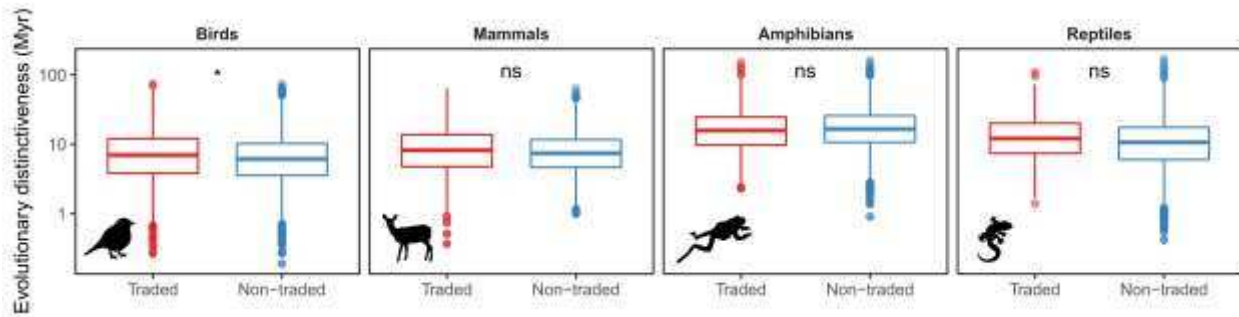
179
 180 **Fig. S3. Variation in body size across traded species.** Large-bodied species are more traded
 181 than small-bodied species. This pattern emerges regardless of the category of threat (except for
 182 reptiles). Body size in amphibians is represented by snout-to-vent length (millimeters), whereas
 183 in birds, mammals and reptiles body size is represented by body mass (grams). Statistics were
 184 assessed using the simulation-based phylogenetic ANOVA of Garland et al. (51). * indicates p-
 185 value of less than 0.05, ** indicates p-value of less than 0.01, *** indicates p-value of less than
 186 0.001, and ns indicates statistical non-significance. The y-axis is log transformed. Threat status is
 187 defined according to the International Union for Conservation of Nature Red list of Threatened
 188 Species. DD=Data Deficient; LC=Least Concern; NT=Near Threatened; VU=Vulnerable;
 189 EN=Endangered; CR=Critically Endangered.

190
 191

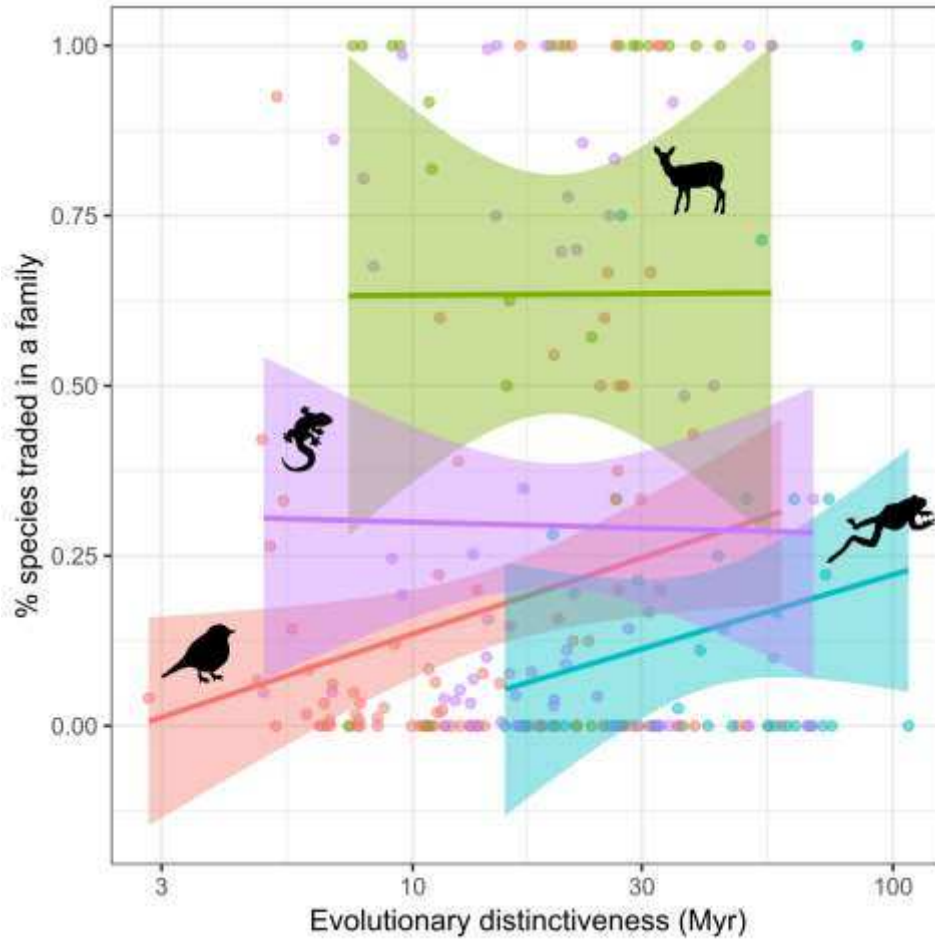


192
193
194
195
196
197
198
199
200

Fig. S4. Relationships between body size and the probability of being traded. Large bodied species have a higher probability of being traded. Significance in relationships were assessed based on the phylogenetic logistic regression method described by Ives and Garland (52). Body size in birds, mammals and reptiles is represented by mass (grams), whereas amphibians are represented by snout-to-vent length (millimeters).



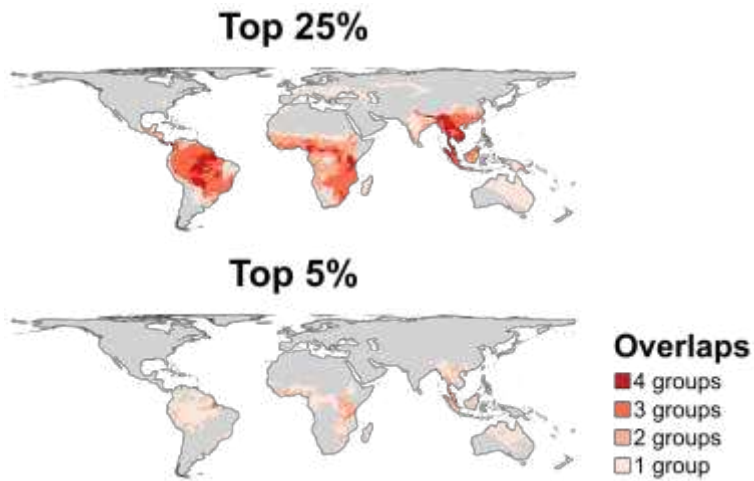
201
 202 **Fig. S5. Variation in evolutionary distinctiveness across traded species.** Evolutionary
 203 distinctiveness, a measure of evolutionary isolation of lineages, is larger in traded than non-
 204 traded birds. This metric is not different between traded and non-traded mammals, amphibians,
 205 and reptiles. Relationships were assessed using simulation-based phylogenetic ANOVA of
 206 Garland et al. (51). The y-axis is log transformed.
 207
 208



209
 210
 211
 212
 213
 214
 215

Fig. S6. Relationship between evolutionary distinctiveness and proportion of species traded in families. Birds are the only group in which mean family-wide evolutionary distinctiveness predicts the proportion of traded birds (linear model: slope = 0.18, P-value = 0.01). Each dot represents a family, and the lines indicate the fit of linear relationships. Red is for birds; turquoise, reptiles; purple, amphibians; green, mammals.

216



217

218

219

220

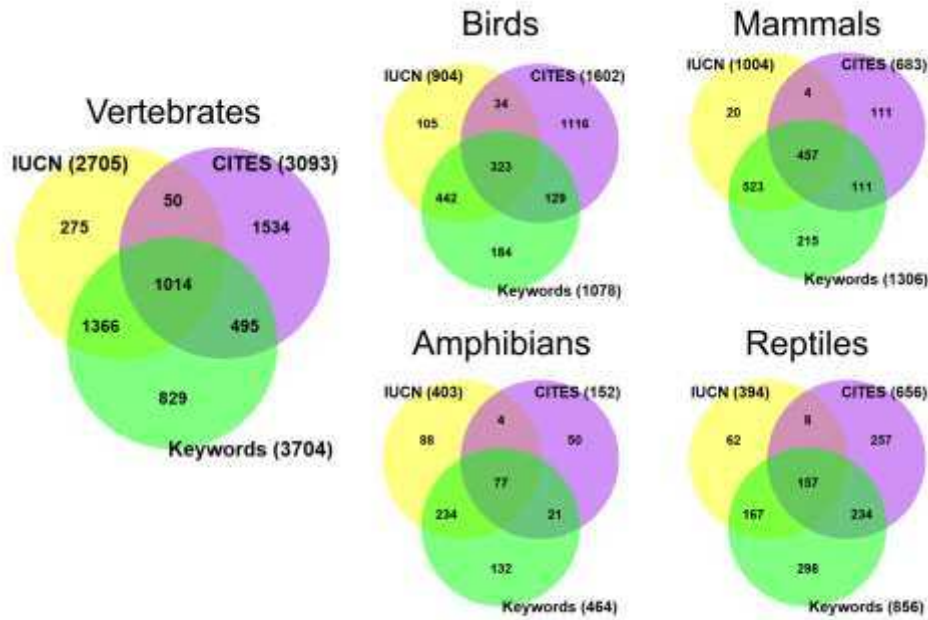
221

222

223

224

Fig. S7. Geographical overlap in hotspots of wildlife trade across vertebrate groups (birds, mammals, amphibians, and reptiles). Hotspot areas are indicated as the top 25% and top 5% largest number of traded species per cell globally. Cells in which hotspots overlap across taxonomic groups are shown in shades of red (i.e., dark red denotes overlapping hotspots across all four vertebrate groups). Grey areas represent the absence of hotspot.



225
 226 **Fig. S8. Venn diagram showing the number of traded species in our database in accordance**
 227 **with the sources.** CITES are those species present in any one of the three CITES appendices.
 228 IUCN are those species threatened by hunting & collecting terrestrial animals (subcategory
 229 intentional use). Keywords are those species found using data mining algorithm that searches for
 230 keywords throughout the entire text of a species' IUCN assessment. See methods in the main text
 231 for further information.

232
 233

234 Supplementary Tables:

235

236 **Table S1. Summary of wildlife trade in terrestrial vertebrates.** Total number of species and
237 families traded in each taxonomic group. Values between parentheses represent percentage of
238 species (or families) traded relative to the total number of species (or families) in each taxonomic
239 group. Summary across all taxonomic groups is given in the column “Vertebrates”.

	Birds	Mammals	Amphibians	Reptiles	Vertebrates
Species traded	2,345 (22.8%)	1,441 (26.6%)	609 (9.4%)	1,184 (12.4%)	5,579 (17.6%)
Families traded	108 (54.5%)	110 (80.9%)	41 (54.7%)	53 (72.6%)	312 (64.7%)
Families <50% species traded	32 (16.2%)	69 (50.7%)	4 (5.3%)	23 (31.5%)	128 (26.6%)

240

241

242

243 **Table S2. Distribution of wildlife trade across threat status according to the International**
 244 **Union for Conservation of Nature Red list of Threatened Species.** Summary across all
 245 taxonomic groups is given in the column Taxa, “Vertebrates”. DD=Data Deficient; NA=Not
 246 assessed; LC=Least Concern; NT=Near Threatened; VU=Vulnerable; EN=Endangered;
 247 CR=Critically Endangered.

Taxa	Threat status	N	N traded (%)
Birds	DD	60	11 (18.3%)
Birds	LC	7872	1293 (16.4%)
Birds	NT	971	385 (39.6%)
Birds	VU	741	349 (47.1%)
Birds	EN	417	199 (47.7%)
Birds	CR	217	108 (49.8%)
Mammals	DD	740	68 (9.2%)
Mammals	LC	3172	641 (20.2%)
Mammals	NT	340	137 (40.3%)
Mammals	VU	512	253 (49.4%)
Mammals	EN	461	226 (49%)
Mammals	CR	195	116 (59.5%)
Amphibians	DD	1435	42 (2.9%)
Amphibians	LC	2555	310 (12.1%)
Amphibians	NT	398	49 (12.3%)
Amphibians	VU	676	92 (13.6%)
Amphibians	EN	868	74 (8.5%)
Amphibians	CR	552	42 (7.6%)
Reptiles	DD	744	49 (6.6%)
Reptiles	LC	2947	465 (15.8%)
Reptiles	NT	288	70 (24.3%)
Reptiles	VU	307	80 (26.1%)
Reptiles	EN	377	103 (27.3%)
Reptiles	CR	181	40 (22.1%)
Reptiles	NA	4719	377 (8%)
Vertebrates	DD	2979	170 (5.7%)
Vertebrates	LC	16546	2709 (16.4%)
Vertebrates	NT	1997	641 (32.1%)
Vertebrates	VU	2236	774 (34.6%)
Vertebrates	EN	2123	602 (28.4%)
Vertebrates	CR	1145	306 (26.7%)
Vertebrates	NA	4719	377 (8%)

248

249

250 **Table S3. List of vertebrate families assessed.** Number of species, traded species and
251 proportion of traded species per family.

252

253 See attached supplement file: Supp_Inf_Table 3_trade_family.xls

254

255 **Table S4. Phylogenetic analysis of variance (ANOVA) testing for differences in body size**
 256 **between traded and non-traded species.** In the column Threat status, “All” denotes the results
 257 of ANOVAs performed including all species in a given taxonomic group, regardless of their
 258 threat status. Threat status according to the International Union for Conservation of Nature Red
 259 list of Threatened Species. DD=Data Deficient; LC=Least Concern; NT=Near Threatened;
 260 VU=Vulnerable; EN=Endangered; CR=Critically Endangered.
 261

Taxa	Threat status	F-value	P-value
Amphibian	All	154.6	<0.001
Amphibian	DD	0.8	ns
Amphibian	LC	42.6	<0.05
Amphibian	NT	43.7	<0.001
Amphibian	VU	76.7	<0.001
Amphibian	EN	35.8	<0.01
Amphibian	CR	8.6	ns
Bird	All	1421.8	<0.001
Bird	DD	13.6	<0.01
Bird	LC	420.9	ns
Bird	NT	329.4	<0.001
Bird	VU	297.7	<0.001
Bird	EN	117.5	<0.001
Bird	CR	51	<0.001
Mammal	All	4205.2	<0.001
Mammal	DD	115.3	<0.001
Mammal	LC	2015.6	<0.001
Mammal	NT	278.2	<0.001
Mammal	VU	421.5	<0.001
Mammal	EN	391.7	<0.001
Mammal	CR	141.3	<0.001
Reptile	All	877	<0.001
Reptile	DD	46.8	<0.01
Reptile	LC	364.3	<0.001
Reptile	NT	14.5	ns
Reptile	VU	60.5	<0.001
Reptile	EN	24.9	ns
Reptile	CR	24.6	<0.01

262
 263

264 **Table S5. Predicted future traded species.** Probability of a species being traded in the future
265 based on body size, evolutionary distinctiveness, phylogenetic relatedness, and the proportion of
266 species traded in respective families. All species that have above 50% probability of future trade
267 for at least one assessment technique are provided.

268

269 See attached supplement file: Supp_Inf_Table 5_predicted_future_traded.xls

270

271

272 **Table S6. Spatial correlation between traded species richness and total species richness**
273 **across taxonomic groups.** Correlations were calculated using Pearson's correlation coefficient.
274 Significance of Pearson's correlations were assessed using Dutilleul's (61) modified t-test to
275 account for spatially independent degrees of freedom.

Class	Coeff.	P-value
Amphibians	0.81	<0.001
Birds	0.9	<0.001
Mammals	0.84	<0.001
Reptiles	0.66	<0.001

276
277
278
279

280 **Table S7. Summary of trade across global biogeographical regions.** Proportion of traded
281 species is relative to the total number of species in a region. Proportion of pet- or product-traded
282 species is relative to the total number of traded species in a region. Note that some species can be
283 traded as both pets and products. Realms classification follows Holt et al. (41), and biomes
284 classification follows Olson et al. (40).

285

286 See attached supplement file: Supp_Inf_Table 7_trade_biogeographic_regions.xls

287

288

289

290 **Table S8. Types of wildlife trade across birds, mammals, amphibians, and reptiles.** Total
 291 number of species and families traded in each taxonomic group as pets and as products. Values
 292 between parentheses represent the percentage of species (or families) traded as pets or as
 293 products relative to the total number of traded species (or traded families) in each taxonomic
 294 group. Summary across all taxonomic groups is given in the column “Vertebrates”. Note that
 295 percentages do not add up to 100% because 1) for some species it is unknown as to whether they
 296 are traded as pets or products, and 2) some species can be traded both as pets and as products.
 297

	Birds	Mammals	Amphibians	Reptiles	Vertebrates
Species traded as pets	1054 (44.9%)	485 (33.7%)	312 (51.2%)	576 (48.6%)	2427 (43.5%)
Species traded as products	1467 (62.6%)	1298 (90.1%)	190 (31.2%)	407 (34.4%)	3362 (60.3%)
Families traded as pets	63 (58.3%)	64 (58.2%)	38 (92.7%)	9 (17%)	174 (55.8%)
Families traded as products	90 (83.3%)	106 (96.4%)	25 (61%)	8 (15.1%)	229 (73.4%)

298
 299
 300

301 **Table S9.** Keywords used for mining trade data from IUCN species' assessments. The asterisk
 302 (*) symbol was used to broaden a search by finding words that start with the same letters. For
 303 instance, ceremon* will find ceremony and ceremonies.

Keywords			
animal parts	game hunt	medicin*	sold
bird trade	game-hunt	merit release	song bird*
bird-trade	game species	ornament*	songbird*
bush meat	gift	over harvest*	song-bird*
bushmeat	human consumption	over-harvest*	sought
bush-meat	human subsistence	overexploit*	trade*
cage	hunters	over-harvest*	traffick*
cage bird*	hunted	pet*	trap*
cagebird*	hunting	pet trade	trophy*
cage-bird*	international trade	pet-trade	trophy hunt*
ceremon*	ivory	poach*	use and trade
clothes	jewellery	protei*	wild meat
craft	jewelry	ritual*	wild-meat
crime	luxury	sale*	wildlife crime
fur	luxury meat	scales	
game animal	market*	seizure	
game-animal*	mascot*	sell*	

304

305 **References**

- 306 36. R Core Team, R: A Language and Environment for Statistical Computing Version 3.5.2
307 (2018).
- 308 37. S. Chamberlain, ROpenSci, M. Salmon, “rredlist”: R package version 0.5.0. Available at:
309 <https://cran.r-project.org/web/packages/rredlist>. (2018).
- 310 38. M. W. Tingley, J. B. C. Harris, F. Hua, D. S. Wilcove, D. L. Yong, *Science* (80-.). **356**,
311 916 (2017).
- 312 39. U. Roll et al., *Nat. Ecol. Evol.* **1**, 1677–1682 (2017).
- 313 40. D. M. Olson et al., *Bioscience*. **51**, 933 (2001).
- 314 41. B. G. Holt et al., *Science*. **339**, 74–8 (2013).
- 315 42. F. Osorio, R. Vallejos, F. Cuevas, D. Mancilla, (2018).
- 316 43. W. Jetz, G. H. Thomas, J. B. Joy, K. Hartmann, A. O. Mooers, *Nature*. **491**, 444–448
317 (2012).
- 318 44. T. S. Kuhn, A. Ø. Mooers, G. H. Thomas, *Methods Ecol. Evol.* **2**, 427–436 (2011).
- 319 45. O. R. P. Bininda-Emonds et al., *Nature*. **446**, 507–12 (2007).
- 320 46. S. A. Fritz, O. R. P. Bininda-Emonds, A. Purvis, *Ecol. Lett.* **12**, 538–549 (2009).
- 321 47. W. Jetz, R. A. Pyron, *Nat. Ecol. Evol.* **2**, 1–9 (2018).
- 322 48. J. F. R. Tonini, K. H. Beard, R. B. Ferreira, W. Jetz, R. A. Pyron, *Biol. Conserv.* **204**, 23–
323 31 (2016).
- 324 49. K. P. Schliep, *Bioinformatics*. **27**, 592–593 (2011).
- 325 50. C. D. L. Orme et al., (2018).
- 326 51. T. Garland, A. W. Dickerman, C. M. Janis, J. A. Jones, *Syst. Biol.* **42**, 265–292 (1993).
- 327 52. A. R. Ives, T. Garland, *Syst. Biol.* **59**, 9–26 (2009).
- 328 53. N. J. B. Isaac, S. T. Turvey, B. Collen, C. Waterman, J. E. M. Baillie, *PLoS One*. **2**, e296
329 (2007).
- 330 54. B. F. Oliveira, V. A. São-Pedro, G. Santos-Barrera, C. Penone, G. C. Costa, *Sci. Data*. **4**,
331 170123 (2017).
- 332 55. A. Slavenko, O. J. S. Tallowin, Y. Itescu, P. Raia, S. Meiri, *Glob. Ecol. Biogeogr.* **25**,
333 1308–1320 (2016).
- 334 56. D. J. Stekhoven, P. Bühlmann, *Bioinformatics*. **28**, 112–118 (2012).
- 335 57. J. A. F. Diniz-Filho et al., *Ecography (Cop.)*. **35**, 239–249 (2012).
- 336 58. T. Santos, PVR: Phylogenetic Eigenvectors Regression and Phylogenetic Signal-
337 Representation Curve. R package version 0.3. Available at: [http://CRAN.R-](http://CRAN.R-project.org/package=PVR)
338 [project.org/package=PVR](http://CRAN.R-project.org/package=PVR). (2018).

- 339 59. H. Wilman et al., *Ecology*. **95**, 2027–2027 (2014).
- 340 60. S. W. Kembel et al., *Bioinformatics*. **26**, 1463–1464 (2010).
- 341 61. P. Dutilleul, P. Clifford, S. Richardson, D. Hemon, *Biometrics*. **49**, 305 (1993).
- 342