



Deposited via The University of Leeds.

White Rose Research Online URL for this paper:

<https://eprints.whiterose.ac.uk/id/eprint/148574/>

Version: Accepted Version

Article:

Pei, Y, Paton, DA, Knipe, RJ et al. (Cover date: Jan Feb 2020) Field-based investigation on fault architecture: a case study from the Lenghu fold-and-thrust belt, Qaidam basin, NE Tibetan Plateau. *Geological Society of America Bulletin*, 132 (1/2). pp. 389-408. ISSN: 0016-7606

<https://doi.org/10.1130/B35140.1>

(c) 2019, Geological Society of America. This is an author produced version of a paper published in the *Geological Society of American Bulletin*. Uploaded in accordance with the publisher's self-archiving policy.

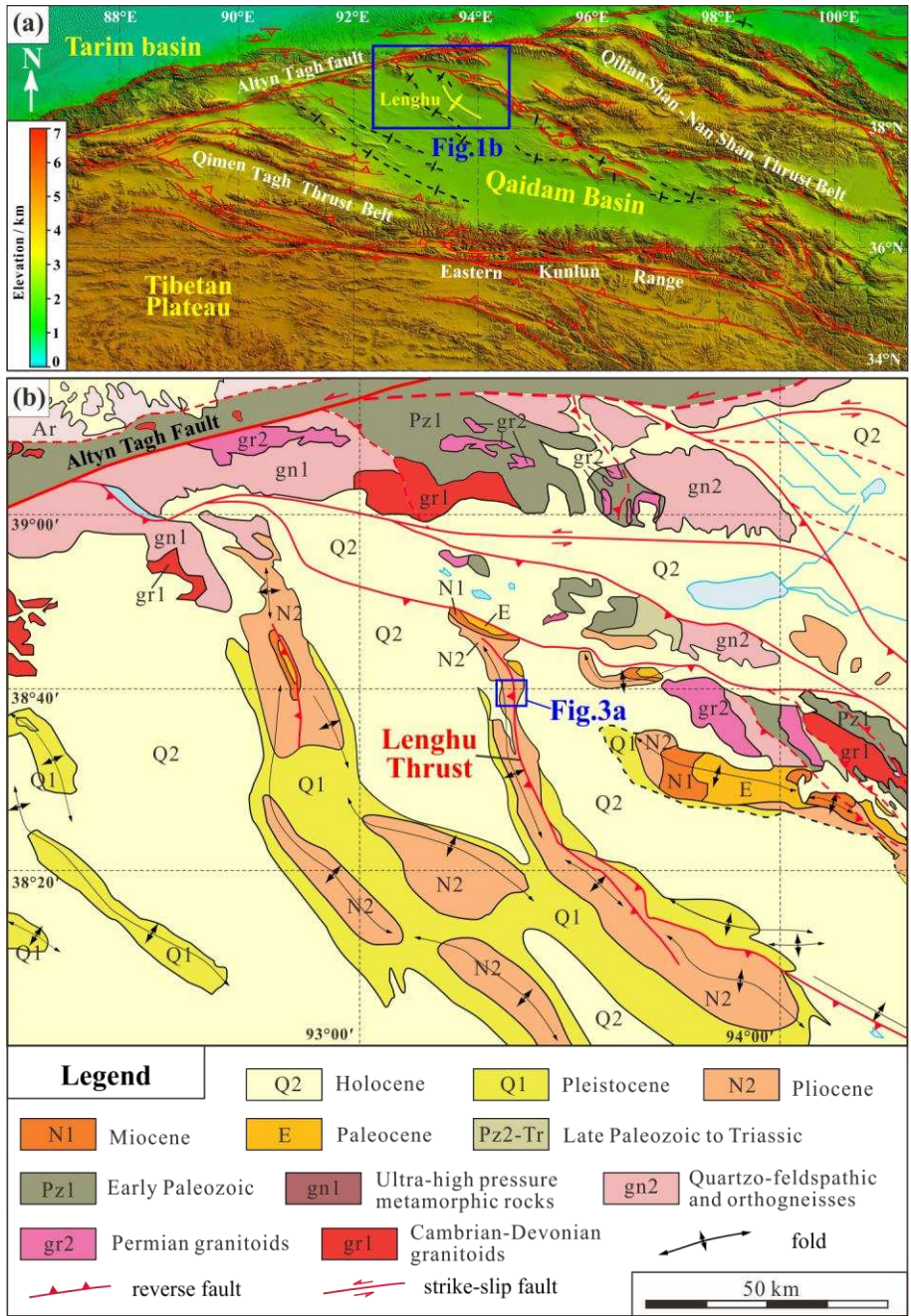
Reuse

Items deposited in White Rose Research Online are protected by copyright, with all rights reserved unless indicated otherwise. They may be downloaded and/or printed for private study, or other acts as permitted by national copyright laws. The publisher or other rights holders may allow further reproduction and re-use of the full text version. This is indicated by the licence information on the White Rose Research Online record for the item.

Takedown

If you consider content in White Rose Research Online to be in breach of UK law, please notify us by emailing eprints@whiterose.ac.uk including the URL of the record and the reason for the withdrawal request.

- Fig 1



• Fig 2

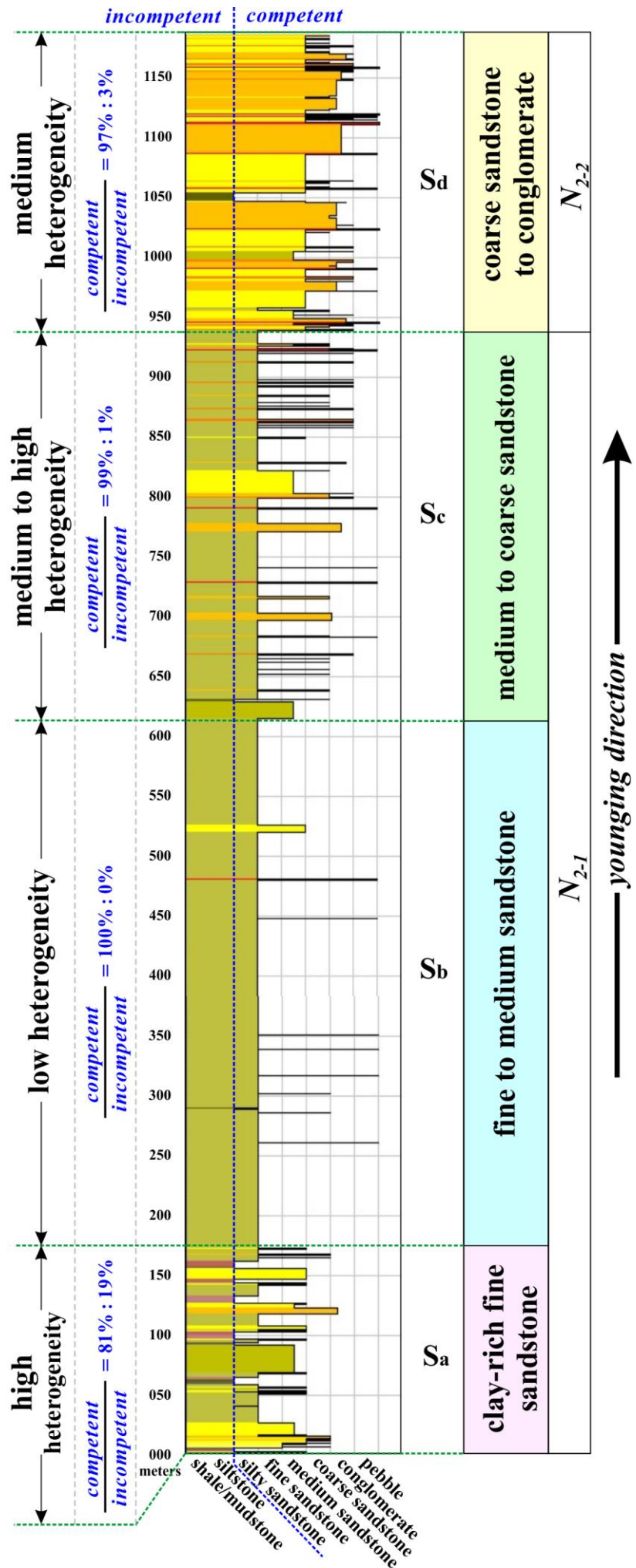


Fig 3

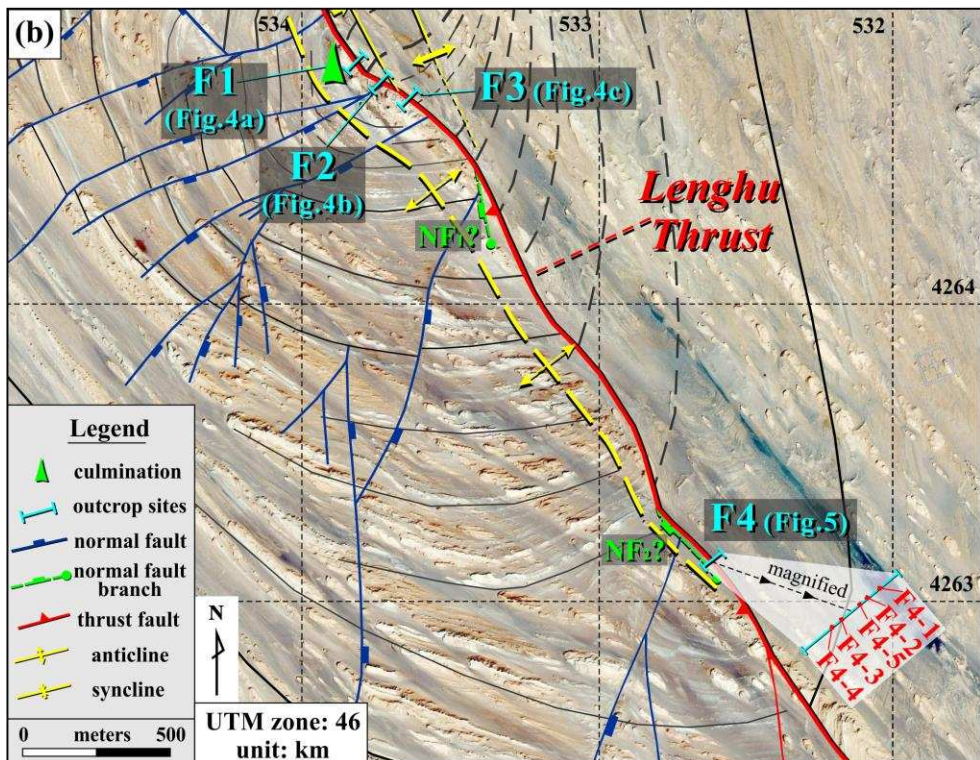
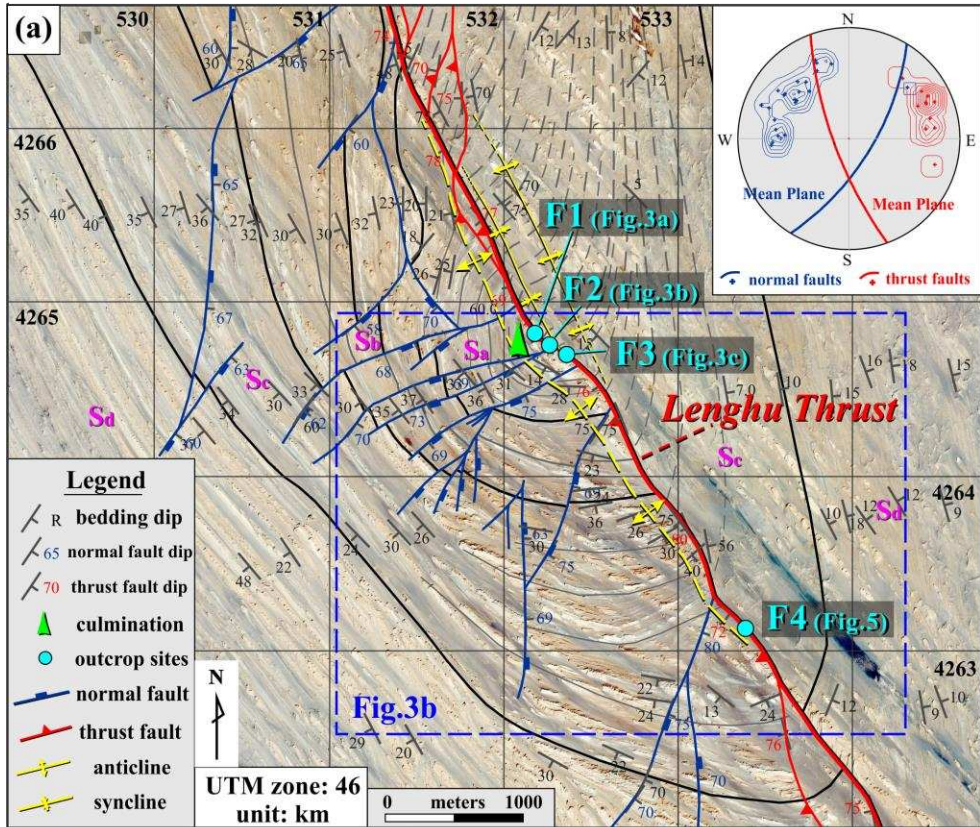


Fig 4

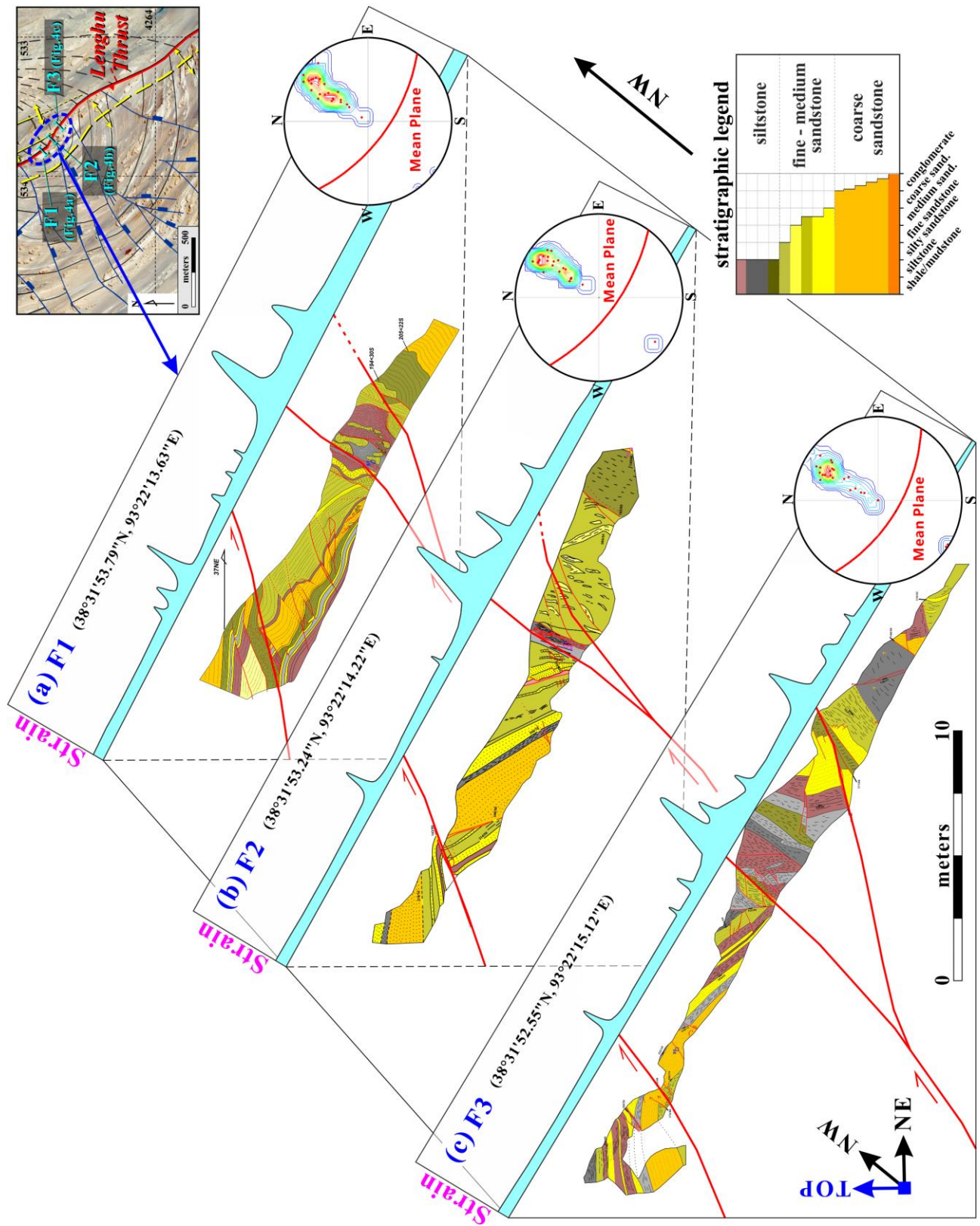


Fig 5

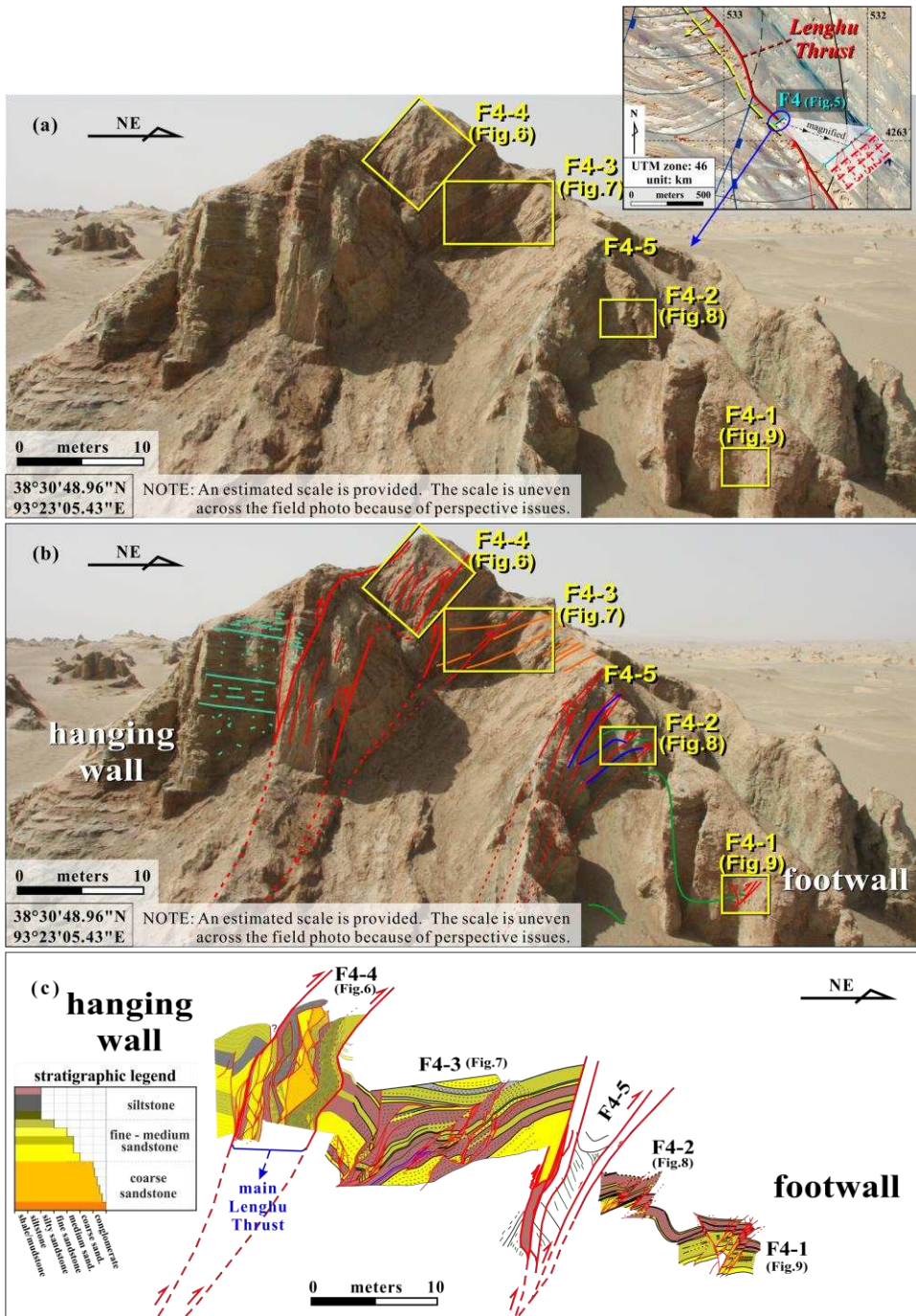


Fig 6

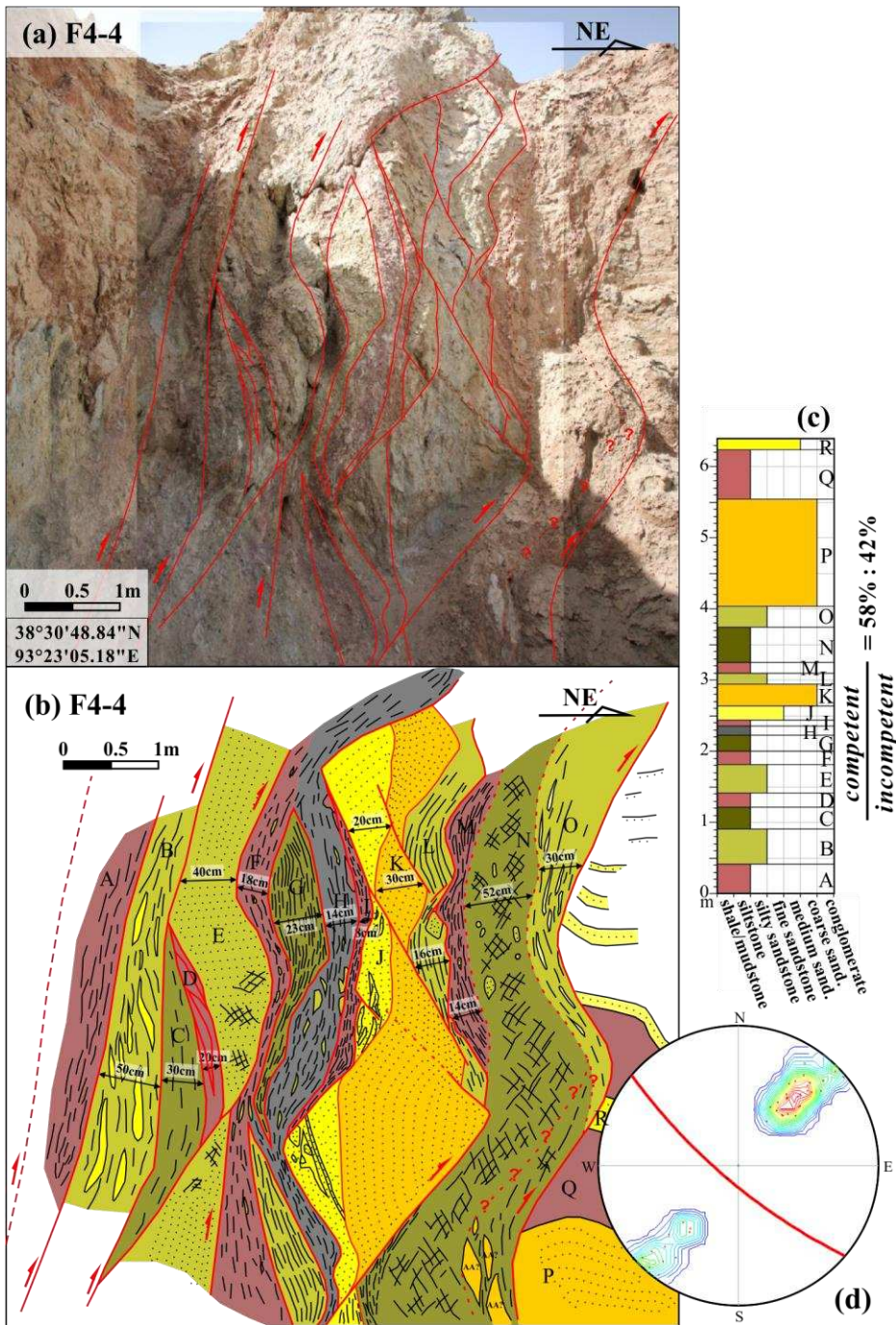


Fig 8

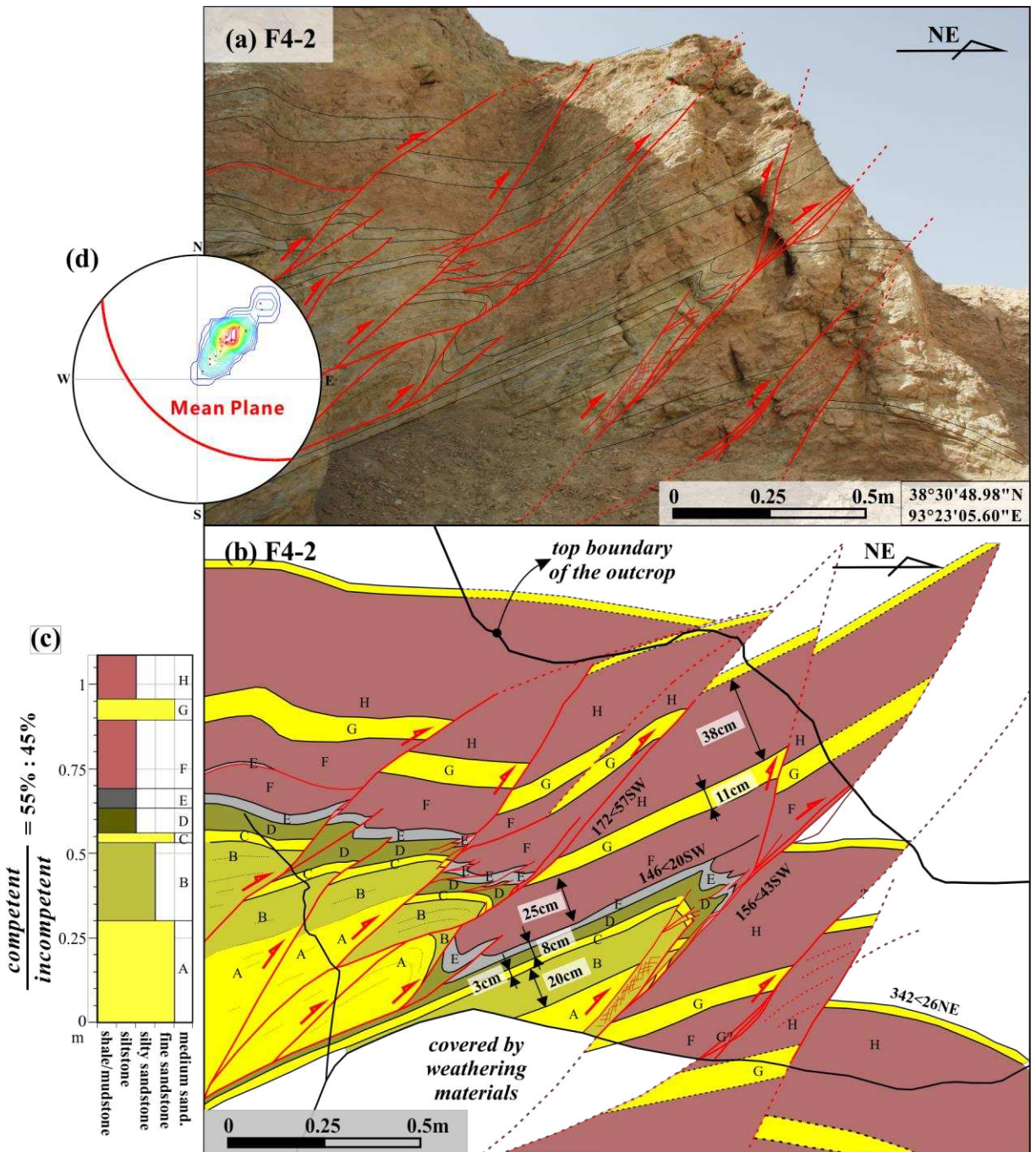


Fig 9

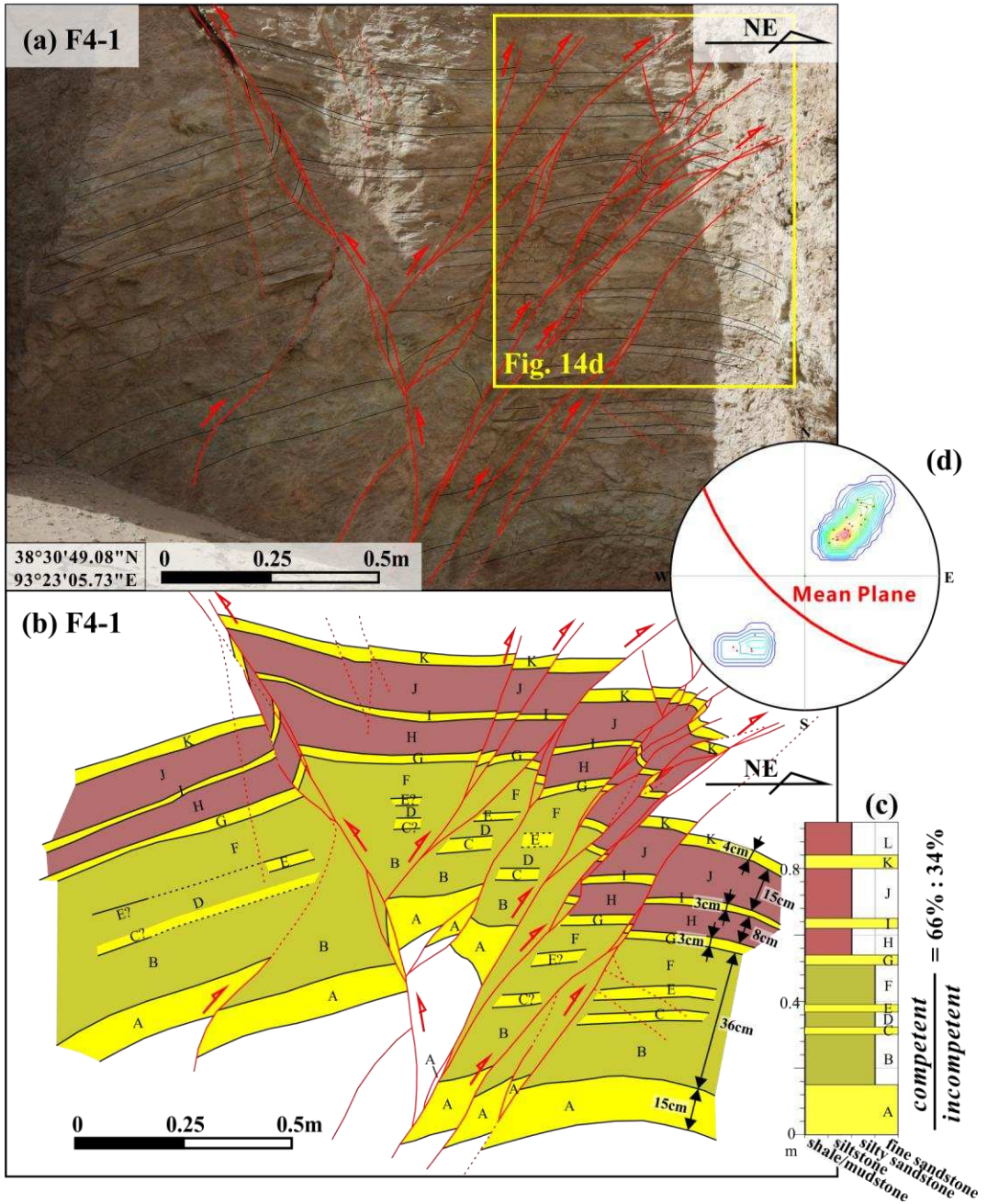


Fig 10

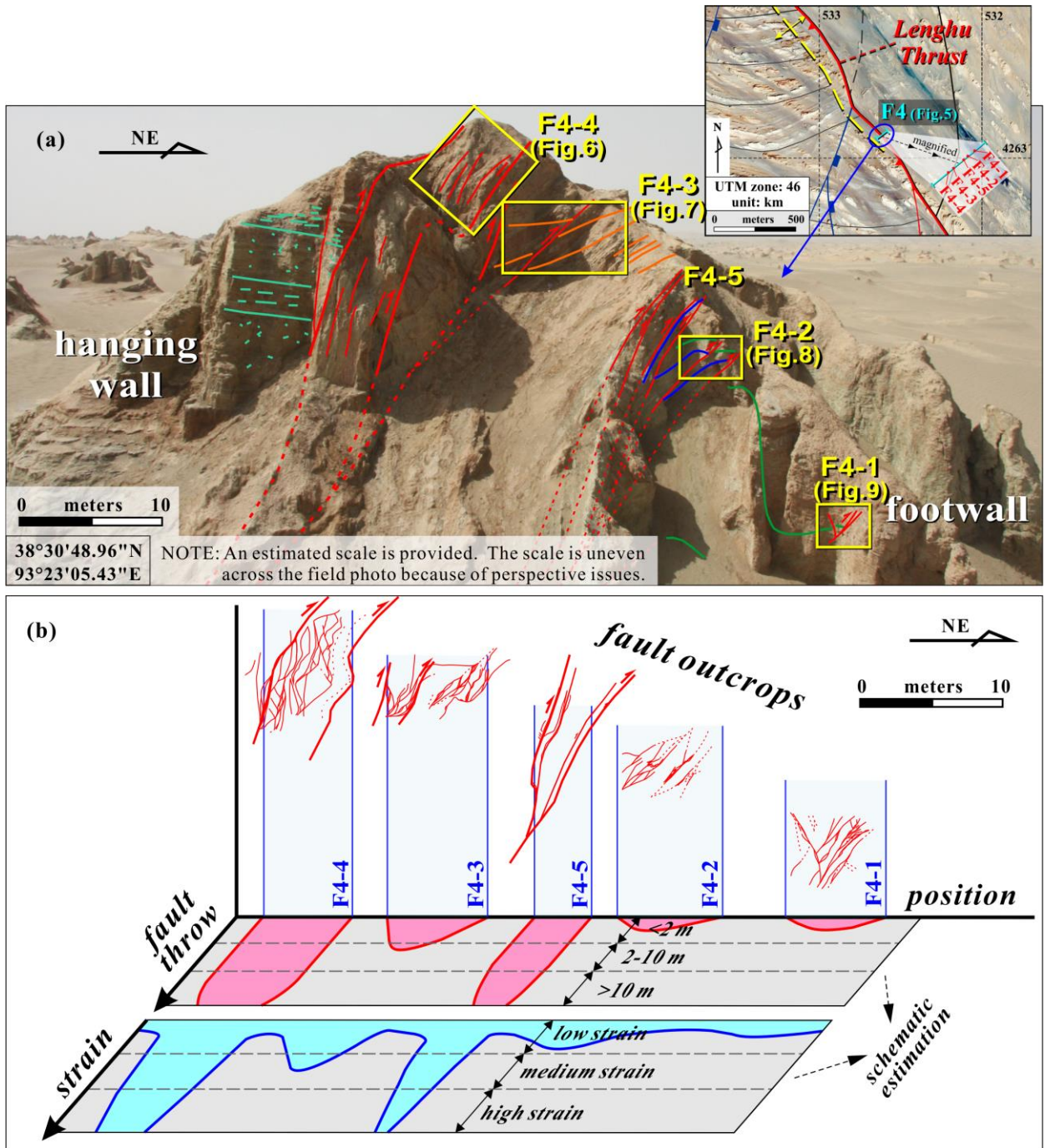


Fig 11

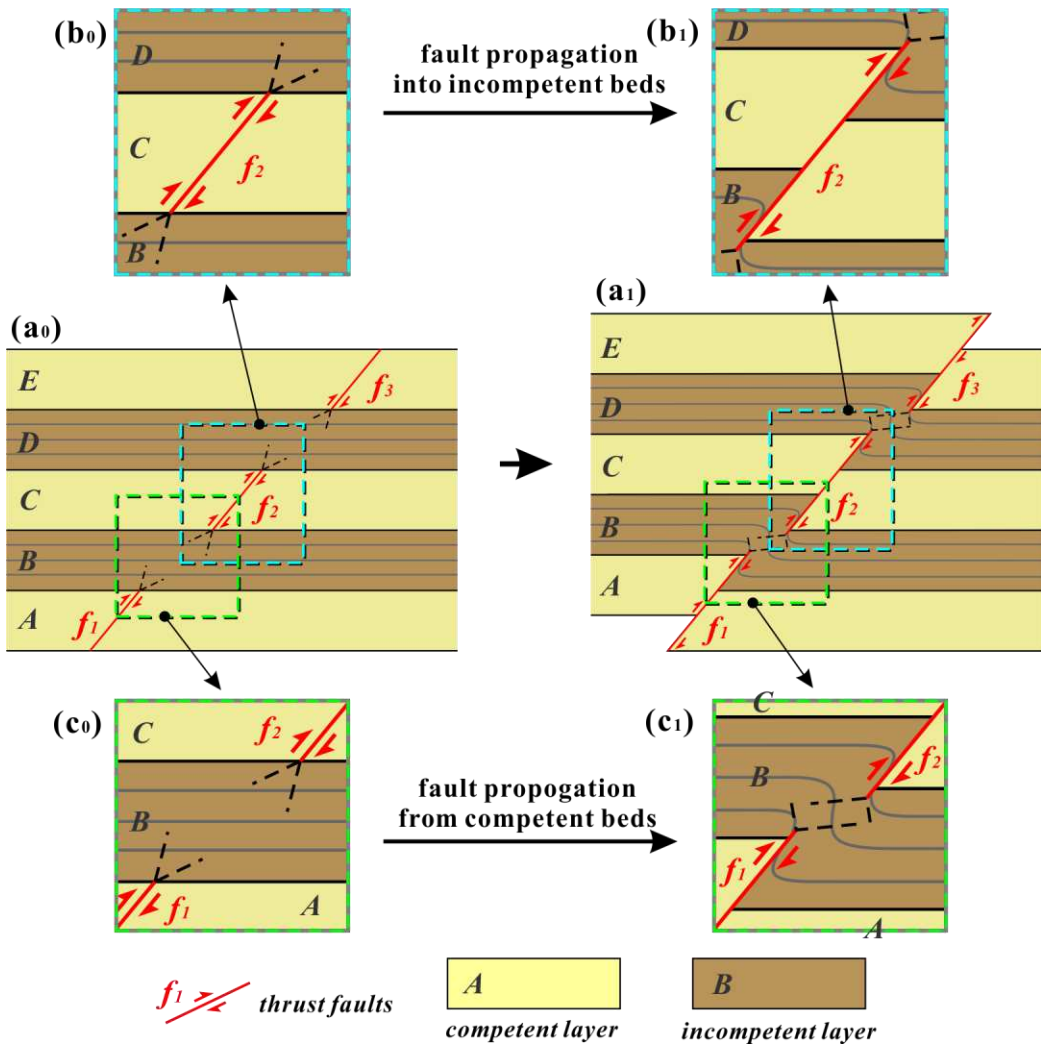
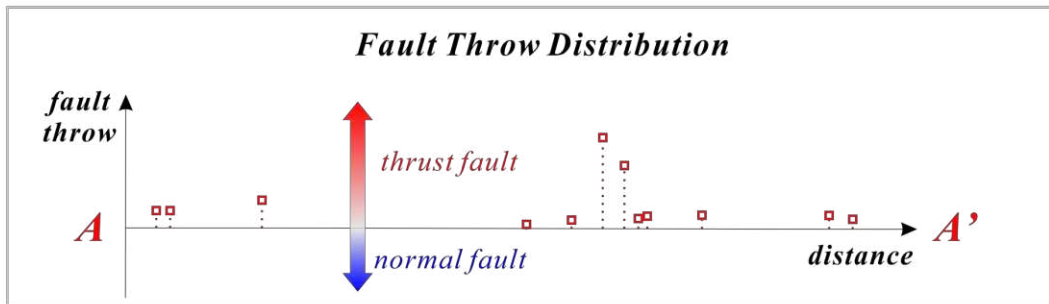
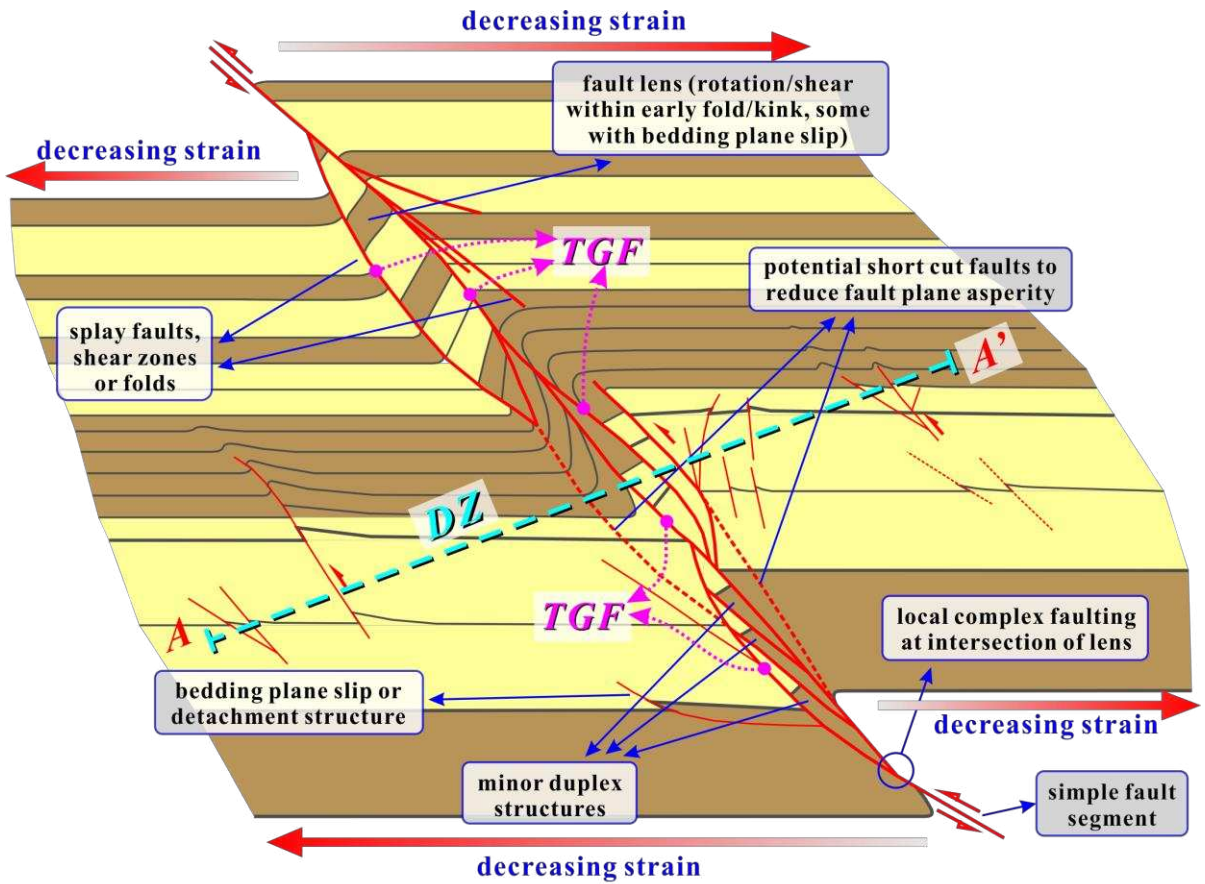


Fig 12



<i>Abbreviations</i>	<i>Lithology</i>
TGF: through-going faults DZ: damage zone	 <i>competent layer</i> <i>incompetent layer</i>

Fig 13

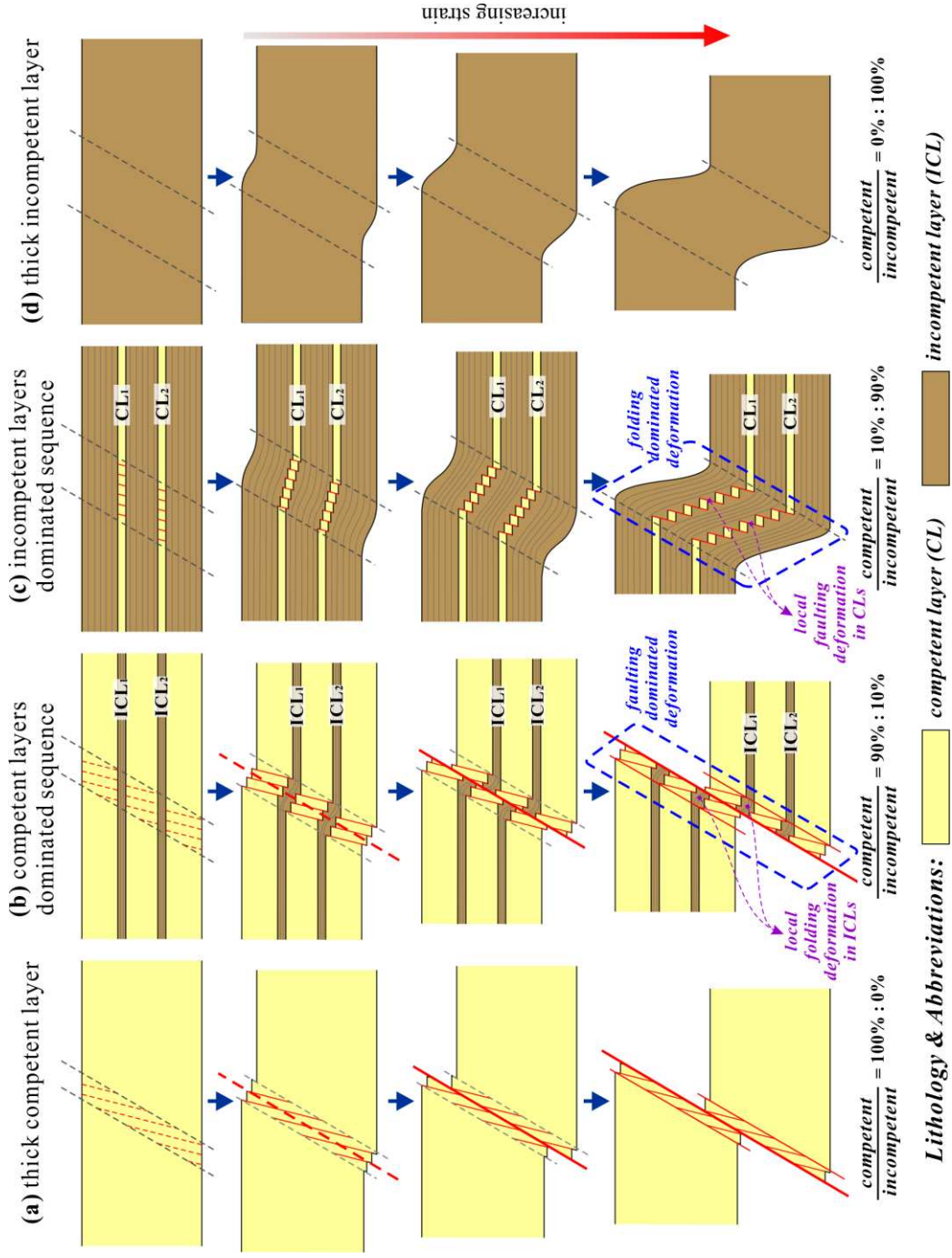


Fig 14

