



This is a repository copy of *Genomic and epidemiological evidence of a dominant Panton-Valentine leucocidin-positive Methicillin Resistant Staphylococcus aureus lineage in Sri Lanka and presence among isolates from the United Kingdom and Australia.*

White Rose Research Online URL for this paper:  
<http://eprints.whiterose.ac.uk/144793/>

Version: Published Version

---

**Article:**

McTavish, S., Snow, S., Cook, E. et al. (12 more authors) (2019) Genomic and epidemiological evidence of a dominant Panton-Valentine leucocidin-positive Methicillin Resistant Staphylococcus aureus lineage in Sri Lanka and presence among isolates from the United Kingdom and Australia. *Frontiers in Cellular and Infection Microbiology*, 9. 123. ISSN 2235-2988

<https://doi.org/10.3389/fcimb.2019.00123>

---

**Reuse**

This article is distributed under the terms of the Creative Commons Attribution (CC BY) licence. This licence allows you to distribute, remix, tweak, and build upon the work, even commercially, as long as you credit the authors for the original work. More information and the full terms of the licence here:  
<https://creativecommons.org/licenses/>

**Takedown**

If you consider content in White Rose Research Online to be in breach of UK law, please notify us by emailing [eprints@whiterose.ac.uk](mailto:eprints@whiterose.ac.uk) including the URL of the record and the reason for the withdrawal request.



[eprints@whiterose.ac.uk](mailto:eprints@whiterose.ac.uk)  
<https://eprints.whiterose.ac.uk/>



# Genomic and Epidemiological Evidence of a Dominant Panton-Valentine Leucocidin-Positive Methicillin Resistant *Staphylococcus aureus* Lineage in Sri Lanka and Presence Among Isolates From the United Kingdom and Australia

## OPEN ACCESS

### Edited by:

Francois Vandenesch,  
Université de Lyon, France

### Reviewed by:

Francesco Santoro,  
University of Siena, Italy  
Anders Rhod Larsen,  
State Serum Institute (SSI), Denmark

### \*Correspondence:

Thushan I. de Silva  
t.desilva@sheffield.ac.uk

†These authors have contributed  
equally to this work

### Specialty section:

This article was submitted to  
Clinical Microbiology,  
a section of the journal  
Frontiers in Cellular and Infection  
Microbiology

Received: 23 January 2019

Accepted: 08 April 2019

Published: 26 April 2019

### Citation:

McTavish SM, Snow SJ, Cook EC,  
Pichon B, Coleman S, Coombs GW,  
Pang S, Arias CA, Díaz L, Boldock E,  
Davies S, Udukala M, Kearns AM,  
Siribaddana S and de Silva TI (2019)  
Genomic and Epidemiological  
Evidence of a Dominant  
Panton-Valentine Leucocidin-Positive  
Methicillin Resistant *Staphylococcus  
aureus* Lineage in Sri Lanka and  
Presence Among Isolates From the  
United Kingdom and Australia.  
Front. Cell. Infect. Microbiol. 9:123.  
doi: 10.3389/fcimb.2019.00123

Sharla M. McTavish<sup>1†</sup>, Sarah J. Snow<sup>2†</sup>, Ellie C. Cook<sup>2†</sup>, Bruno Pichon<sup>1</sup>, Sarah Coleman<sup>3</sup>, Geoffrey W. Coombs<sup>4</sup>, Stanley Pang<sup>4</sup>, Cesar A. Arias<sup>5,6,7</sup>, Lorena Díaz<sup>5,7</sup>, Emma Boldock<sup>2,3</sup>, Steve Davies<sup>3</sup>, Mangala Udukala<sup>8</sup>, Angela Marie Kearns<sup>1</sup>, Sisira Siribaddana<sup>8,9</sup> and Thushan I. de Silva<sup>2,10\*</sup>

<sup>1</sup> Healthcare Associated Infections and Antimicrobial Resistance AMR Division, National Infection Service, Public Health England, London, United Kingdom, <sup>2</sup> The Florey Institute for Host-Pathogen Interactions and Department of Infection, Immunity and Cardiovascular Disease, University of Sheffield, Sheffield, United Kingdom, <sup>3</sup> Department of Microbiology, Sheffield Teaching Hospitals NHS Foundation Trust, Sheffield, United Kingdom, <sup>4</sup> Antimicrobial Resistance and Infectious Diseases Research Laboratory, School of Veterinary Life Sciences, Murdoch University, Murdoch, WA, Australia, <sup>5</sup> Center for Antimicrobial Resistance and Microbial Genomics and Division of Infectious Diseases, UTHealth, McGovern Medical School, Houston, TX, United States, <sup>6</sup> Center for Infectious Diseases, UTHealth School of Public Health, Houston, TX, United States, <sup>7</sup> Molecular Genetics and Antimicrobial Resistance Unit, International Center for Microbial Genomics, Universidad El Bosque, Bogota, Colombia, <sup>8</sup> Anuradhapura Teaching Hospital, Anuradhapura, Sri Lanka, <sup>9</sup> Faculty of Medicine and Allied Sciences, Rajarata University of Sri Lanka, Mihintale, Sri Lanka, <sup>10</sup> Department of Medicine, Wright Fleming Institute, Imperial College London, London, United Kingdom

**Objective:** To undertake the first detailed genomic analysis of methicillin-resistant *Staphylococcus aureus* (MRSA) isolated in Sri Lanka.

**Methods:** A prospective observational study was performed on 94 MRSA isolates collected over a 4 months period from the Anuradhapura Teaching Hospital, Sri Lanka. Screening for *mecA*, *mecC*, and the Panton-Valentine leucocidin (PVL)-associated *lukS-PV/lukF-PV* genes and molecular characterization by *spa* typing was undertaken. Whole genome sequencing (WGS) and phylogenetic analysis was performed on selected multilocus sequence type (MLST) clonal complex 5 (CC5) isolates from Sri Lanka, England, Australia, and Argentina.

**Results:** All 94 MRSA harbored the *mecA* gene. Nineteen *spa* types belonging to nine MLST clonal complexes were identified. Where origin of the sample was recorded, most isolates were from skin and soft tissue infections (70/91; 76.9%), with fewer causing bacteremia (16/91; 17.6%), empyema (3/91; 3.3%) and osteomyelitis (2/91; 2.2%). Sixty two (65.9%) isolates were PVL positive with the majority (56 isolates; 90.3%) belonging

to a dominant CC5 lineage. This lineage, PVL-positive ST5-MRSA-IVc, was associated with both community and hospital-onset infections. Based on WGS, representative PVL-positive ST5-MRSA-IVc isolates from Sri Lanka, England and Australia formed a single phylogenetic clade, suggesting wide geographical circulation.

**Conclusions:** We present the most detailed genomic analysis of MRSA isolated in Sri Lanka to date. The analysis identified a PVL-positive ST5-MRSA-IVc that is prevalent among MRSA causing clinical infections in Sri Lanka. Furthermore, this clone was also found among isolates from the United Kingdom and Australia.

**Keywords:** methicillin resistant *Staphylococcus aureus*, Panton-Valentine leucocidin, Sri Lanka, CC5, whole genome sequencing

## INTRODUCTION

Worldwide, *Staphylococcus aureus* is the primary causative agent of community-acquired skin and soft tissue infections (SSTI) and is an important cause of hospital-associated invasive infections including bacteremia, pneumonia and endocarditis (Bell et al., 2002; David and Daum, 2010). Panton-Valentine leucocidin (PVL)-positive Methicillin Resistant *S. aureus* (MRSA) is a well-documented cause of community-associated SSTI and less commonly, life-threatening infections in immunocompetent populations. Its prevalence is thought to be increasing worldwide and multi drug resistant PVL-MRSA is emerging as a threat, particularly in the Indian subcontinent (Song et al., 2011; Shallcross et al., 2013). In many developed countries, surveillance of MRSA invasive disease, characterization of high risk MRSA clones and the investigation of suspected MRSA outbreaks are achieved through public health tracking and molecular analysis. By comparison, limited data exist on MRSA infections in low and middle-income countries. A recent report has suggested Sri Lankan hospitals have the highest prevalence of MRSA for all Asian hospitals that were included in the study (Song et al., 2011). However, information on the molecular epidemiology and spectrum of clinical disease is lacking (Corea et al., 2003; Mahalingam et al., 2014; Jayaweera and Kumbukgolla, 2017; Jayaweera et al., 2017). Consequently in our study, we report on the genomic analysis of MRSA isolated from patients admitted to a major teaching hospital in Sri Lanka.

## METHODS

A prospective, observational study of sequential MRSA infections in hospitalized patients was conducted at the Anuradhapura Teaching Hospital from 30th June to 31st October 2014. This hospital serves ~1.6 million people living in the rural North Central province of Sri Lanka. All MRSA isolated from any site with a clinical infection during the 4-months period were included in the study. *S. aureus* species identification from clinical samples was confirmed by colony morphology, catalase and tube coagulase tests. Screening for methicillin resistance was undertaken via disc diffusion testing using oxacillin, incubation on Mueller-Hinton agar at 33–35°C for 24 h, and interpreted according to CLSI 2005 guidelines. Ethical approval was obtained from the Ethics Review Committee, Rajarata University of

Sri Lanka. Infections were defined as community-acquired (CA) if the sample was collected <48 h from admission and hospital-acquired (HA) if collected later, based on previous studies distinguishing whether MRSA infection were likely to be acquired in community or hospital settings (Cardoso et al., 2014).

Isolates were referred to the Staphylococcal Reference Service, National Infection Service, Public Health England (PHE), Colindale, London for further analysis. Initial identification was performed using the MALDI-TOF (MALDI Biotyper<sup>®</sup>, Bruker Daltonik GmbH, Germany), followed by real-time polymerase chain reaction (PCR) for *mecA* and *lukS-PV/lukF-PV* genes, to determine the isolate's methicillin resistance, Panton-Valentine leucocidin (PVL) status, and *spa* typing (Frénay et al., 1996; Pichon et al., 2012).

Whole genome sequencing (WGS) on selected isolates was undertaken as previously described (Garvey et al., 2016; Lahuerta-Marin et al., 2016). Genomic DNA was extracted using the Qiagen DNA mini kit (Qiagen) and QIA-symphony instrument (Qiagen). DNA libraries were prepared with the Nextera XT kit (Illumina, Cambridge, UK) and sequenced on the Illumina HiSeq 2500 instrument (Illumina), generating 100 base paired end fragments. Sequence types (ST) were derived from WGS sequences using MOST (Tewolde et al., 2016). By mapping WGS reads against reference sequences using bowtie (Langmead et al., 2009), a broad range of loci were screened for virulence factors and the immune evasion cluster (IEC), in addition to genes and chromosomal mutations associated with antimicrobial resistance (Lahuerta-Marin et al., 2016; Sharma et al., 2016). Staphylococcal Cassette Chromosome *mec* (SCC*mec*) types were deduced based on the detection of the *mec* complex and *ccr* genes by BLAST on assembled genomes generated using SPAdes (Bankevich et al., 2012). The phylogenetic relationship between isolates was determined at the core genome level by Single Nucleotide Polymorphism (SNP) analysis using an in house pipeline (phenix; <https://github.com/phe-bioinformatics/PHENIX>). Sequence reads were mapped to an ST8-MRSA reference sequence (NC\_007795) and SNPs were called and filtered using the Genome Analysis Toolkit v2.0 (Van Der Auwera et al., 2013). The resulting alignment was used for maximum likelihood analyses using RAXML v.0 8.2.8 (Stamatakis, 2014) under the GTRCAT model with 100 bootstraps. The best tree was drawn using the iTOL application (Letunic and Bork, 2016). The sequence data supporting the results of this article are available

in the European Nucleotide Archive, under project accession number PRJEB27049.

## RESULTS

The 94 isolates submitted for further testing were confirmed as *S. aureus* by MALDI-TOF and were *mecA* positive (Table 1). Where clinical data were available ( $n = 91$ ), the majority of MRSA isolates ( $n = 70$ , 76.9%) were from skin and soft tissue infections (SSTIs), with the remainder from invasive infections, including 16 (17.6%) MRSA bacteremias (Table 1). Five deaths occurred, all in patients with bacteremia. Based on the 19 *spa* types identified, the isolates could be grouped into nine MLST clonal complexes (CC) including: CC5 ( $n = 59$  isolates), CC30 ( $n = 18$ ), CC1 ( $n = 8$ ), CC59 ( $n = 4$ ), and single isolates belonging to CC6, CC8, CC45, CC97, and CC101. The dominant CC5 MRSA lineage (62.7% of isolates) was comprised of six related *spa* types: t002 ( $n = 51$ ), t010 ( $n = 4$ ), and single isolates of t045, t1062, t5490, and t7342. Sixty two (65.9%) isolates were PVL positive, the majority (56 isolates; 90.3%) belonging to the CC5 lineage. Where clinical details were available, the CC5 PVL-positive lineage was associated mainly with HA- and CA-SSTIs (42/50; 84.0%), but was also responsible for more invasive infections (Table 1), such as bacteremia (5/50; 10.0%), empyema (2/50;

4.0%) and osteomyelitis (1/50; 2.0%). Two deaths occurred, both in patients with bacteremia. All HA-SSTIs were surgical wound infections.

To investigate whether the CC5 PVL-positive lineage was genotypically diverse, or a single circulating clone, WGS was performed on 34 isolates selected to include both invasive (four bacteremia and one osteomyelitis) and SSTI ( $n = 29$ ) infections, samples from both children and adults, and a diverse range of *spa* types (28 t002 and six samples from other *spa* types). As CC5 PVL-positive MRSA have been identified sporadically in England, we sought to assess the relatedness of the Sri Lankan isolates to lineage-matched isolates held in the PHE archives, which represent samples submitted to a national reference laboratory. These included isolates from patients with known travel links to Sri Lanka (10 CC5 PVL-positive MRSA isolates collected between 2005 and 2014 but not known to be linked to each other in time or place) and patients with no known travel links to Sri Lanka (79 isolates: 12 CC5 PVL-positive MRSA isolates collected between 2005 and 2015, 33 CC5 PVL-negative MRSA isolates collected between 2009 and 2016, 4 CC5 PVL-positive methicillin-sensitive *S. aureus* (MSSA) isolates collected between 2011 and 2016, and 30 CC5 PVL-negative MSSA isolates collected between 2011 and 2016). Previously sequenced CC5 PVL-positive MRSA from collaborators in Australia ( $n = 14$ , collected in 2015)

**TABLE 1** | Genotypic, demographic and clinical characteristics of MRSA isolates from Sri Lanka.

	<i>spa</i> types (No.)	PVL	No. subjected to WGS	Age distribution (Years) <sup>a</sup>				Clinical presentations*					Hospital or community acquired (No.)	
				<1	1–15	16–60	>60	NK	SSTI	BAC	EMP	OM		NK
CC1	t657 ( $n = 3$ )	+	ND	1	2			2	1				CA (2), NK (1)	
	t127 ( $n = 5$ )	+	ND		2	2	1		5				CA (2), HA (3)	
		( $n = 1$ )												
CC5	t002 ( $n = 51$ )	+	28	8	15	22	5	1	42	5	2	1	1	CA (25), HA (9), NK (17)
		( $n = 50$ )												
	t010 ( $n = 4$ )	+	3		3	1		3			1		CA (4)	
		( $n = 3$ )												
	t045 ( $n = 1$ )	+	1		1			1					CA (1)	
	t1062 ( $n = 1$ )	+	1				1	1					CA (1)	
	t5490 ( $n = 1$ )	+	1		1			1					HA (1)	
	t7342 ( $n = 1$ )	–	ND		1					1			CA (1)	
CC6	t304 ( $n = 1$ )	–	ND				1		1				CA (1)	
CC8	t008 ( $n = 1$ )	–	ND		1				1				CA (1)	
CC30	t021 ( $n = 2$ )	+	ND		1	1		1	1				NK (1), CA (1)	
	t425 ( $n = 13$ )	–	ND		2	10	1	6	6		1		CA (5), HA (8)	
	t15007 ( $n = 1$ )	–	ND		1	1		1					HA (1)	
	t4410 ( $n = 2$ )	–	ND		1	1		2					HA (1), CA (1)	
CC45	t465 ( $n = 1$ )	–	ND		1			1					HA (1)	
CC59	t437 ( $n = 1$ )	–	ND		1			1					HA (1)	
	t7028 ( $n = 3$ )	–	ND		2		1	1	1		1		HA (2), NK (1)	
CC97	t15010 ( $n = 1$ )	–	ND		1				1				HA (1)	
CC101	t1212 ( $n = 1$ )	–	ND		1			1					NK (1)	

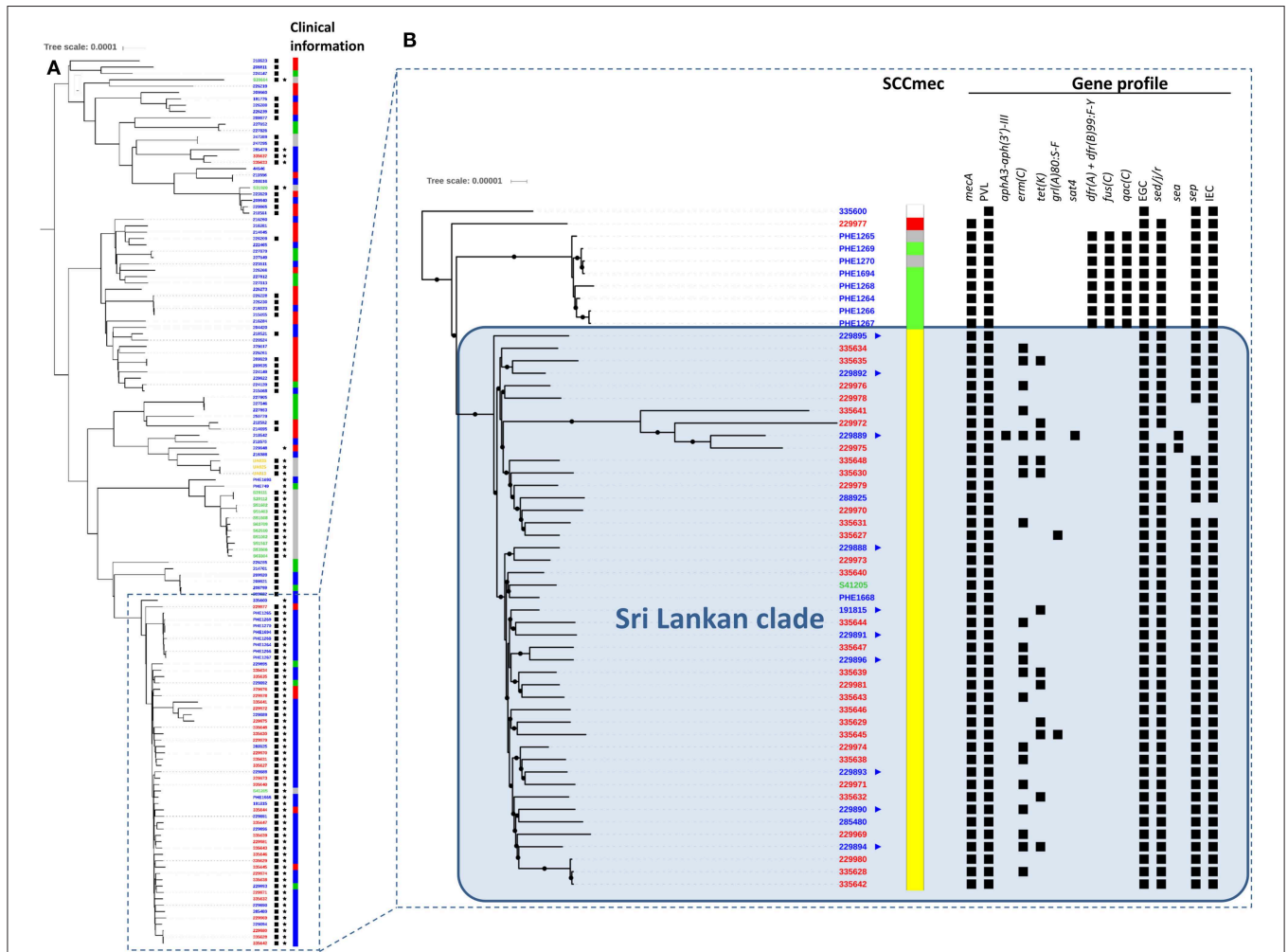
All isolates were *mecA* positive by PCR. SSTI, skin and soft tissue infection; \*Hospital-acquired cases of SSTI were surgical wound infections; BAC, bacteremia; EMP, empyema; OM, osteomyelitis; CA, community-acquired; HA, hospital-acquired; ND, not done; NK, not known.

<sup>a</sup>Gender distribution of cases: 48 male, 40 female, 6 no data available.

and Argentina ( $n = 3$ ; collected in 2003) were also included as comparators.

Phylogenetic analysis of CC5 strain WGS showed great variability (Figure 1A), with isolates from various countries dispersed throughout the tree. A strong geographic signal however was apparent amongst the isolates from Sri Lanka, with all but three CC5-PVL-positive MRSA isolates clustering into a single clade, herein dubbed the “Sri Lankan clade” (Figure 1B). Isolates from the United Kingdom (13) and Australia (1) were also found in the Sri Lankan clade, including three from patients with no known links to Sri Lanka. Within the clade, the isolates were identified as multilocus sequence type (ST) 5 and the MRSA isolates harbored the SCCmec IVc staphylococcal cassette chromosome *mec* subtype. All but one

isolate encoded enterotoxin genes (*sed*, *sej*, and *ser*) usually found on plasmids (Fisher et al., 2018). Greater variability was apparent for other traits including the *sep* enterotoxin gene. Genes encoding resistance to erythromycin [*erm(C)*] or tetracycline [*tet(K)*] were variably detected highlighting the dynamic loss/acquisition of mobile genetic elements within the clone. Similarly, a chromosomal mutation associated with quinolone resistance (*grrA* 80:S-F) was noted sporadically. A single isolate from a UK patient with links to Sri Lanka was identified as being genotypically multi-drug resistant, encoding *blaZ*, *mecA*, *erm(C)*, *tet(K)*, *aphA3*, and *sat4* genes. Bayesian phylogenetic reconstruction using BEAST (data not shown) failed to provide significant temporal signal for predicting evolutionary rate and time to common ancestor.



**FIGURE 1 |** Alignment of international MLST CC5 *Staphylococcus aureus* genomes. **(A)** Unrooted phylogenetic tree indicating relationships between international CC5 *S. aureus* including their PVL (★) and *mecA* (■) status based on SNP analysis of whole genome sequences. Clinical information relating to each isolate is also shown (red: invasive, blue: skin and soft tissue infection, green: screening/carrriage sample, gray: unknown). Phylogeny was inferred by maximum likelihood analysis using RAxML GTRCAT model with 100 bootstraps from aligned polymorphic sites allowing 20% of Ns and gaps. Polymorphic sites were called using GATK2 and filtered (AD ratio = 0.9; min depth = 10; MQ score >30; QUAL score >40) using genome NC\_002745 as mapping reference. The tree was drawn using the iTOL application. Country of origin denoted as follows in sample identifiers at tips: blue: England; red: Sri Lanka; green: Australia; yellow: Argentina. Scale is in substitutions per site and indicates  $\approx 130$  SNPs. **(B)** ► Indicates UK patients with known links to Sri Lanka. SCCmec types: ■ IV-a; ■ IV-c; ■ VI; ■ NT. In gene profile section, ■ indicates presence of gene. All sequenced *mecA*-positive isolates also contained the  $\beta$ -lactamase encoding gene *blaZ*. Scale is in substitutions per site and represents  $\approx 13$  SNPs.



## DISCUSSION

Particular lineages of MRSA are frequently associated with various geographical origins e.g., ST8/USA300 (North America); ST93 (Australia); ST80 (North Africa); ST30 (South-West Pacific) (David and Daum, 2010; Chua et al., 2011). Prior to the current study, CC5 PVL-positive MRSA was reported in many countries world-wide (Monecke et al., 2011); however, their origin(s) are unclear. A recent phylogenomic study of CC5-MRSA isolates from the Western Hemisphere showed high diversity, even among strains that shared the same SCCmec type circulating in the same country (Challagundla et al., 2018). A study of *S. aureus* bacteremia isolates from nine Latin American countries reported that the majority of MRSA belonged to CC5 (Arias et al., 2017). Very few whole genome sequences from CC5-MRSA isolates from Asian countries are currently available.

Herein, in most instances, phylogenetic analysis of CC5 PVL-positive MRSA from four continents showed clustering according to their geographic location, suggesting they have arisen independently in different parts of world following the acquisition of PVL phage and/or different SCCmec elements. Our data provide evidence of a successful ST5-PVL-positive MRSA-IVc clone in Sri Lanka which also appears to be present in distant geographical regions. Thirteen isolates from England were interspersed within the Sri Lankan clade; ten with known links to Sri Lanka. One isolate from Australia also clustered within the Sri Lankan clade, however a link to Sri Lanka could not be determined.

Whilst in our study all Sri Lankan isolates were collected systematically without undue bias, it is important to acknowledge that the number of isolates is small and that they were collected from a single center over a relatively short timeframe. However, the UK CC5 PVL-positive MRSA isolates in the Sri Lankan clade, including those with known links to Sri Lanka, were collected over the course of a decade prior to our study. This suggests that wider circulation of this PVL-positive ST5-MRSA-IVc clone is likely in Sri Lanka and that our newly collected samples do not simply represent a clonal outbreak in Anuradhapura Teaching Hospital. With our current dataset, it is not possible to definitively conclude whether this clone originated from Sri Lanka and spread to the UK and Australia, or whether the origin is from another country. A larger study of isolates from other parts of Sri Lanka and globally would be required to help elucidate the origins and dissemination of PVL-positive MRSA belonging to the CC5 lineage. Travel- and migration-related acquisition and importation of MRSA strains to Europe is well-described, including a high proportion of PVL-positive isolates causing SSTI (Nurjadi et al., 2015, 2018). The ST5-PVL-positive MRSA-IVc clone identified was also responsible for both CA- and HA-infections, emphasizing the increasingly blurred lines between community and hospital-associated infections reported (Skov and Jensen, 2009). We also had limited CC5 PVL-negative MRSA isolates from Sri Lanka and did not perform WGS on these. Since PVL are carried on bacteriophages (Boakes et al., 2011), it is possible that we have missed isolates within the ST5-MRSA-IVc clade that have lost PVL. Again, a larger study is required to explore this possibility. Furthermore, such a study

would allow comprehensive characterization of genetic factors important in the uptake of PVL in various CC5 clades.

In conclusion, we have presented the most detailed genomic analysis of MRSA isolated in Sri Lanka to date and have demonstrated, at least in the hospital and catchment area studied, that clinical MRSA infections in Sri Lanka are dominated by a PVL-positive ST5-MRSA-IVc clone. We have also shown the clone can be found in English patients with a history of travel to Sri Lanka. Further work is required to determine the prevalence of carriage and infection associated with PVL-positive ST5-MRSA-IVc in Sri Lanka, and the dynamics of transmission in and out of hospital, and whether these findings are replicated on a national scale.

## ETHICS STATEMENT

Ethical approval was obtained from the Ethics Review Committee, Rajarata University of Sri Lanka.

## AUTHOR CONTRIBUTIONS

TdS, AK, and BP designed and supervised the study. SJS, EC, MU, and SS carried out the field work and initial microbiological characterization of the isolates. SC, SD, and EB carried out data analysis and interpretation of the primary dataset. SM carried out genetic characterization of isolates from LK and UK. BP performed phylogenetic analyses. SM, TdS, AK, and BP performed analysis of study data. AK, BP, TdS, and SM wrote the paper. GC, SP, CA, and LD provided data. All authors approved the final manuscript.

## FUNDING

TdS is funded by a Wellcome Trust Intermediate Clinical Fellowship (110058/Z/15/Z). LD was supported by grants COL130871250417 and COL130874455850 from Colciencias. CA is funded through an NIH-NIAID grant K24 AI-AI121296, R01-AI134637, R01-AI093749 and R21 AI121519. During fieldwork, SJS and EC were supported by student grants from The Sheffield Medico-Chirurgical Society, The Sheffield Grammer School Trust and The 800th Lord Mayor's Anniversary Trust.

## ACKNOWLEDGMENTS

We thank the Staphylococcal Reference Service team at PHE, Colindale for their assistance with laboratory work. We also thank the microbiology laboratory staff at the Teaching Hospital Anuradhapura for help with collection and initial characterization of isolates. We are grateful to Carlos M. Luna, Pulmonary Division, Department of Medicine, Jose de San Martin Hospital, University of Buenos Aires, Buenos Aires, Argentina, for providing bacterial isolates. This work was presented in part at the 26th European Congress of Clinical Microbiology and Infectious Diseases, Amsterdam, The Netherlands. This manuscript has been released as a pre-print at bioRxiv (McTavish et al., 2019).

## REFERENCES

- Arias, C. A., Reyes, J., Carvajal, L. P., Rincon, S., Diaz, L., Panesso, D., et al. (2017). A prospective cohort multicenter study of molecular epidemiology and phylogenomics of *Staphylococcus aureus* bacteremia in nine Latin American countries. *Antimicrob. Agents Chemother.* 61:e00816-17. doi: 10.1128/AAC.00816-17
- Bankevich, A., Nurk, S., Antipov, D., Gurevich, A. A., Dvorkin, M., Kulikov, A. S., et al. (2012). SPAdes: a new genome assembly algorithm and its applications to single-cell sequencing. *J. Comput. Biol.* 19, 455–477. doi: 10.1089/cmb.2012.0021
- Bell, J. M., Turnidge, J. D., and Sentry, A. (2002). High prevalence of oxacillin-resistant *Staphylococcus aureus* isolates from hospitalized patients in Asia-Pacific and South Africa: results from SENTRY antimicrobial surveillance program, 1998–1999. *Antimicrob. Agents Chemother.* 46, 879–881. doi: 10.1128/AAC.46.3.880-882.2002
- Boakes, E., Kearns, A. M., Ganner, M., Perry, C., Hill, R. L., and Ellington, M. J. (2011). Distinct bacteriophages encoding Pantom-Valentine leucocidin (PVL) among international methicillin-resistant *Staphylococcus aureus* clones harboring PVL. *J. Clin. Microbiol.* 49, 684–692. doi: 10.1128/JCM.01917-10
- Cardoso, T., Almeida, M., Friedman, N. D., Aragão, I., Costa-Pereira, A., Sarmento, A. E., et al. (2014). Classification of healthcare-associated infection: a systematic review 10 years after the first proposal. *BMC Med.* 12:40. doi: 10.1186/1741-7015-12-40
- Challagundla, L., Reyes, J., Rafiqullah, I., Sordelli, D. O., Echaniz-Aviles, G., Velazquez-Meza, M. E., et al. (2018). Phylogenomic classification and the evolution of clonal complex 5 methicillin-resistant *Staphylococcus aureus* in the western hemisphere. *Front. Microbiol.* 9:1901. doi: 10.3389/fmicb.2018.01901
- Chua, K., Laurent, F., Coombs, G., Grayson, M. L., and Howden, B. P. (2011). Antimicrobial resistance: Not community-associated methicillin-resistant *Staphylococcus aureus* (CA-MRSA)! A clinician's guide to community MRSA—its evolving antimicrobial resistance and implications for therapy. *Clin. Infect. Dis.* 52, 99–114. doi: 10.1093/cid/ciq067
- Corea, E., De Silva, T., and Perera, J. (2003). Methicillin-resistant *Staphylococcus aureus*: prevalence, incidence and risk factors associated with colonization in Sri Lanka. *J. Hosp. Infect.* 55, 145–148. doi: 10.1016/S0195-6701(03)00256-1
- David, M. Z., and Daum, R. S. (2010). Community-associated methicillin-resistant *Staphylococcus aureus*: epidemiology and clinical consequences of an emerging epidemic. *Clin. Microbiol. Rev.* 23, 616–687. doi: 10.1128/CMR.00081-09
- Fisher, E. L., Otto, M., and Cheung, G. Y. C. (2018). Basis of virulence in enterotoxin-mediated staphylococcal food poisoning. *Front. Microbiol.* 9:436. doi: 10.3389/fmicb.2018.00436
- Frénay, H. M., Bunschoten, A. E., Schouls, L. M., Van Leeuwen, W. J., Vandenbroucke-Grauls, C. M., Verhoef, J., et al. (1996). Molecular typing of methicillin-resistant *Staphylococcus aureus* on the basis of protein A gene polymorphism. *Eur. J. Clin. Microbiol. Infect. Dis.* 15, 60–64. doi: 10.1007/BF01586186
- Garvey, M. I., Pichon, B., Bradley, C. W., Moiemem, N. S., Oppenheim, B., and Kearns, A. M. (2016). Improved understanding of an outbreak of methicillin-resistant *Staphylococcus aureus* in a regional burns centre via whole-genome sequencing. *J. Hosp. Infect.* 94, 401–404. doi: 10.1016/j.jhin.2016.09.013
- Jayaweera, A. S., Karunaratne, M., Kumbukgolla, W. W., and Thushari, H. L. (2017). Prevalence of methicillin resistant *Staphylococcus aureus* (MRSA) bacteremia at teaching hospital Anuradhapura, Sri Lanka. *Ceylon Med. J.* 62, 110–111. doi: 10.4038/cmj.v62i2.8478
- Jayaweera, J. A. A. S., and Kumbukgolla, W. W. (2017). Antibiotic resistance patterns of methicillin-resistant *Staphylococcus aureus* (MRSA) isolated from livestock and associated farmers in Anuradhapura, Sri Lanka. *Germs.* 7, 132–139. doi: 10.18683/germs.2017.1118
- Lahuerta-Marin, A., Guelbenzu-Gonzalo, M., Pichon, B., Allen, A., Doumith, M., Lavery, J. F., et al. (2016). First report of lukM-positive livestock-associated methicillin-resistant *Staphylococcus aureus* CC30 from fattening pigs in Northern Ireland. *Vet. Microbiol.* 182, 131–134. doi: 10.1016/j.vetmic.2015.11.019
- Langmead, B., Trapnell, C., Pop, M., and Salzberg, S. L. (2009). Ultrafast and memory-efficient alignment of short DNA sequences to the human genome. *Genome Biol.* 10:R25. doi: 10.1186/gb-2009-10-3-r25
- Letunic, I., and Bork, P. (2016). Interactive tree of life (iTOL) v3: an online tool for the display and annotation of phylogenetic and other trees. *Nucleic Acids Res.* 44, W242–W245. doi: 10.1093/nar/gkw290
- Mahalingam, U., Thirunavukarasu, K., and Murugananthan, K. (2014). Methicillin resistant *Staphylococcus aureus* among nurses in a tertiary care hospital in northern Sri Lanka. *Ceylon Med. J.* 59, 63–65. doi: 10.4038/cmj.v59i2.7067
- McTavish, S. M., S. S. J., Cook, E. C., Pichon, B., Coleman, S., Coombs, G. W., Pang, S., et al. (2019). Genomic and epidemiological evidence of a dominant Pantom-Valentine leucocidin-positive methicillin resistant *Staphylococcus aureus* lineage in Sri Lanka with spread to the United Kingdom and Australia. *bioRxiv. [Preprint]*. doi: 10.1101/521260v1
- Monecke, S., Coombs, G., Shore, A. C., Coleman, D. C., Akpaka, P., Borg, M., et al. (2011). A field guide to pandemic, epidemic and sporadic clones of methicillin-resistant *Staphylococcus aureus*. *PLoS ONE.* 6:e17936. doi: 10.1371/journal.pone.0017936
- Nurjadi, D., Fleck, R., Lindner, A., Schäfer, J., Gertler, M., Mueller, A., et al. (2018). Import of community-associated, methicillin-resistant *Staphylococcus aureus* to Europe through skin and soft-tissue infection in intercontinental travellers, 2011–2016. *Clin. Microbiol. Infect.* doi: 10.1016/j.cmi.2018.09.023. [Epub ahead of print].
- Nurjadi, D., Friedrich-Jänicke, B., Schäfer, J., Van Genderen, P. J., Goorhuis, A., Perignon, A., et al. (2015). Skin and soft tissue infections in intercontinental travellers and the import of multi-resistant *Staphylococcus aureus* to Europe. *Clin. Microbiol. Infect.* 21, 567 e561–e510. doi: 10.1016/j.cmi.2015.01.016
- Pichon, B., Hill, R., Laurent, F., Larsen, A. R., Skov, R. L., Holmes, M., et al. (2012). Development of a real-time quadruplex PCR assay for simultaneous detection of nuc, Pantom-Valentine leucocidin (PVL), mecA and homologue mecALGA251. *J. Antimicrob. Chemother.* 67, 2338–2341. doi: 10.1093/jac/dks221
- Shallcross, L. J., Fragaszy, E., Johnson, A. M., and Hayward, A. C. (2013). The role of the Pantom-Valentine leucocidin toxin in staphylococcal disease: a systematic review and meta-analysis. *Lancet Infect. Dis.* 13, 43–54. doi: 10.1016/S1473-3099(12)70238-4
- Sharma, M., Nunez-Garcia, J., Kearns, A. M., Doumith, M., Butaye, P. R., Argudin, M. A., et al. (2016). Livestock-associated methicillin resistant *Staphylococcus aureus* (LA-MRSA) clonal complex (CC) 398 Isolated from UK animals belong to European lineages. *Front. Microbiol.* 7:1741. doi: 10.3389/fmicb.2016.01741
- Skov, R. L., and Jensen, K. S. (2009). Community-associated methicillin-resistant *Staphylococcus aureus* as a cause of hospital-acquired infections. *J. Hosp. Infect.* 73, 364–370. doi: 10.1016/j.jhin.2009.07.004
- Song, J. H., Hsueh, P. R., Chung, D. R., Ko, K. S., Kang, C. I., Peck, K. R., et al. (2011). Spread of methicillin-resistant *Staphylococcus aureus* between the community and the hospitals in Asian countries: an ANSORP study. *J. Antimicrob. Chemother.* 66, 1061–1069. doi: 10.1093/jac/dkr024
- Stamatakis, A. (2014). RAxML version 8: a tool for phylogenetic analysis and post-analysis of large phylogenies. *Bioinformatics.* 30, 1312–1313. doi: 10.1093/bioinformatics/btu033
- Tewelde, R., Dallman, T., Schaefer, U., Sheppard, C. L., Ashton, P., Pichon, B., et al. (2016). MOST: a modified MLST typing tool based on short read sequencing. *PeerJ.* 4:e2308. doi: 10.7717/peerj.2308
- Van Der Auwera, G. A., Carneiro, M. O., Hartl, C., Poplin, R., Del Angel, G., Levy-Moonshine, A., et al. (2013). From FastQ data to high confidence variant calls: the genome analysis toolkit best practices pipeline. *Curr. Protoc. Bioinformatics.* 43, 11.10.11–33. doi: 10.1002/0471250953.bi1110s43

**Conflict of Interest Statement:** The authors declare that the research was conducted in the absence of any commercial or financial relationships that could be construed as a potential conflict of interest.

Copyright © 2019 McTavish, Snow, Cook, Pichon, Coleman, Coombs, Pang, Arias, Diaz, Boldock, Davies, Udakala, Kearns, Siribaddana and de Silva. This is an open-access article distributed under the terms of the Creative Commons Attribution License (CC BY). The use, distribution or reproduction in other forums is permitted, provided the original author(s) and the copyright owner(s) are credited and that the original publication in this journal is cited, in accordance with accepted academic practice. No use, distribution or reproduction is permitted which does not comply with these terms.