



Deposited via The University of York.

White Rose Research Online URL for this paper:

<https://eprints.whiterose.ac.uk/id/eprint/141367/>

Article:

Cargo, Catherine, Cullen, Matthew, Taylor, Jan et al. (2019) The use of targeted sequencing and flow cytometry to identify patients with a clinically significant monocytosis. *Blood*. pp. 1325-1334. ISSN: 1528-0020

<https://doi.org/10.1182/blood-2018-08-867333>

Reuse

Items deposited in White Rose Research Online are protected by copyright, with all rights reserved unless indicated otherwise. They may be downloaded and/or printed for private study, or other acts as permitted by national copyright laws. The publisher or other rights holders may allow further reproduction and re-use of the full text version. This is indicated by the licence information on the White Rose Research Online record for the item.

Takedown

If you consider content in White Rose Research Online to be in breach of UK law, please notify us by emailing eprints@whiterose.ac.uk including the URL of the record and the reason for the withdrawal request.

Figure 1

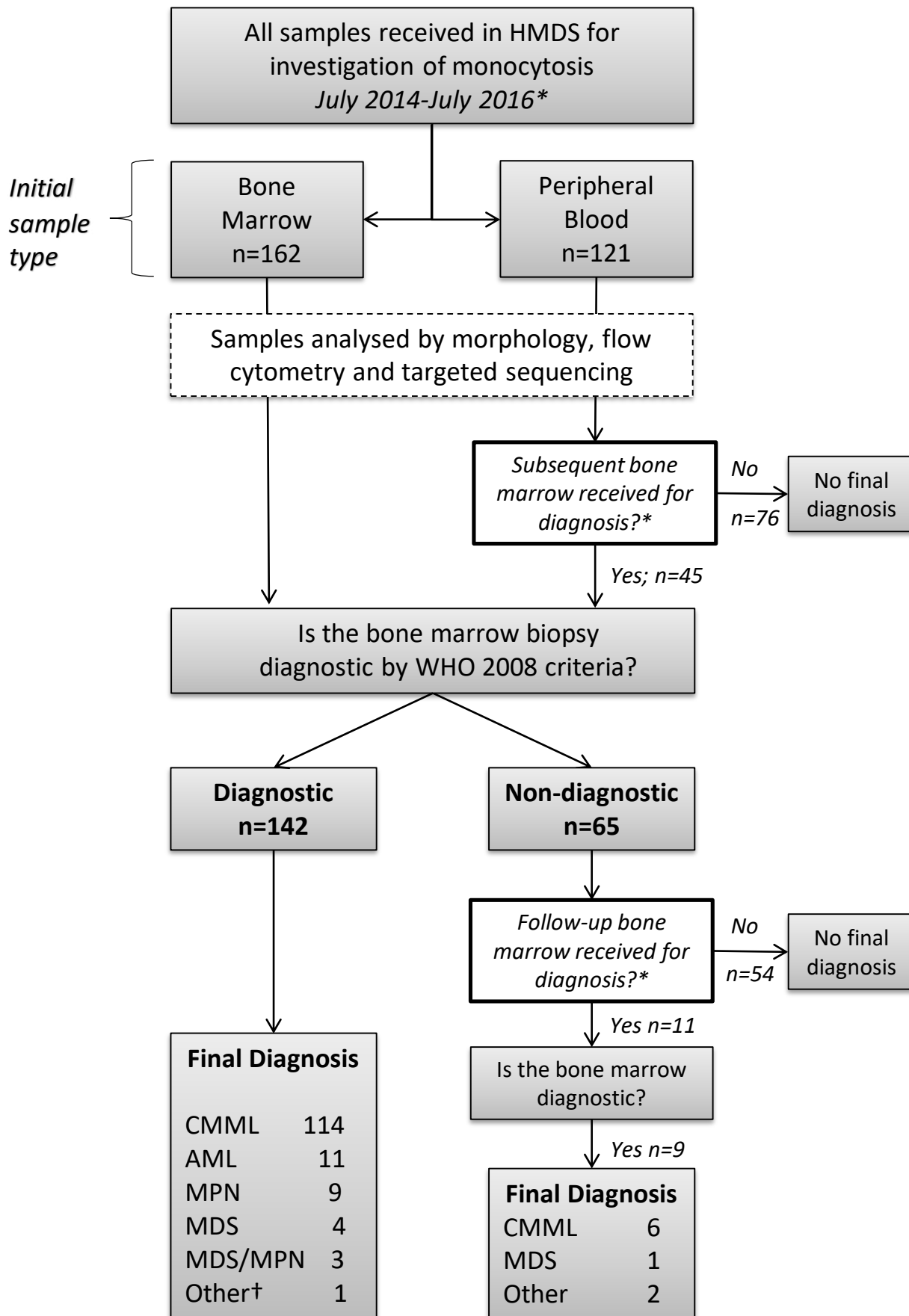


Figure 2

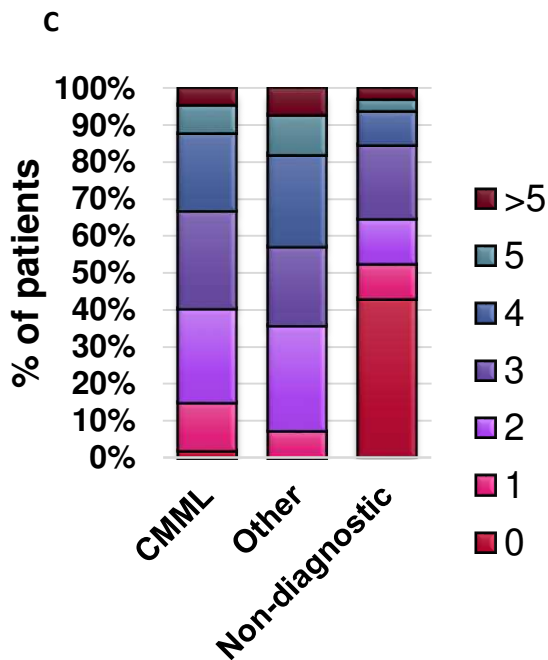
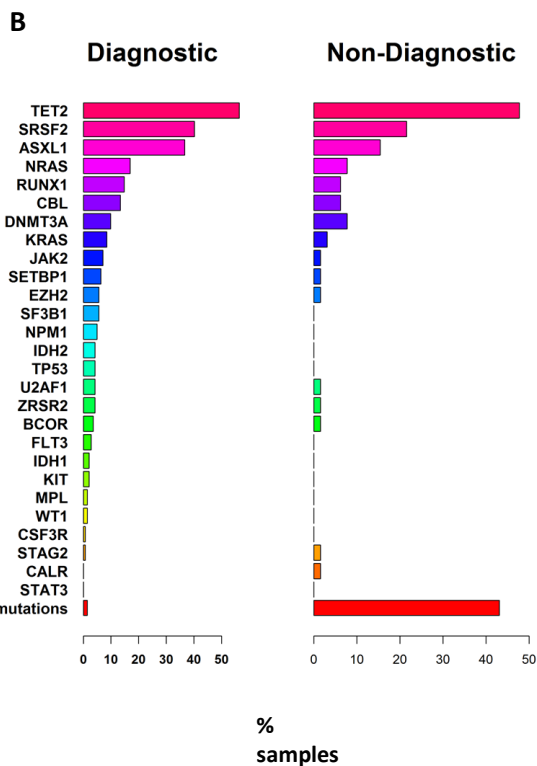
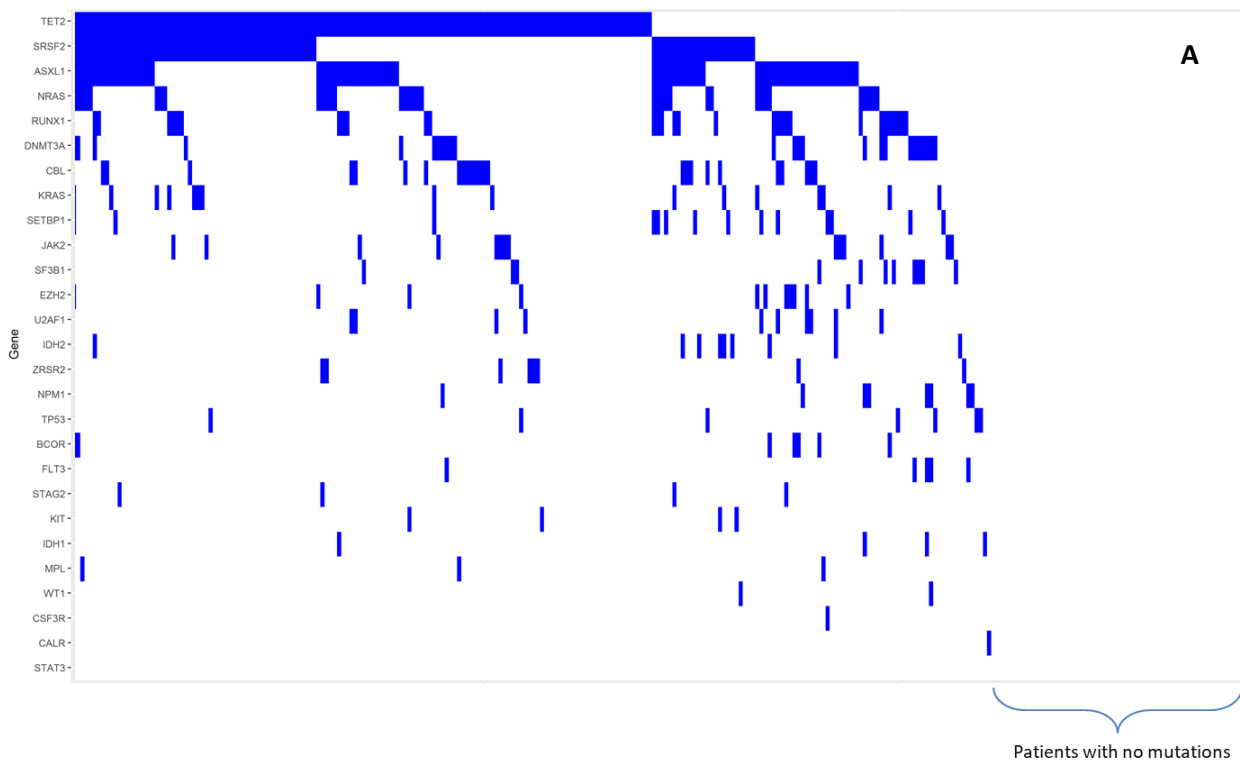


Figure 3

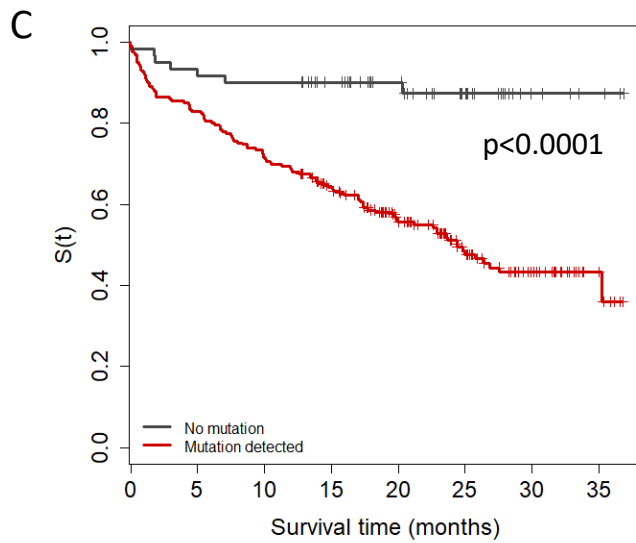
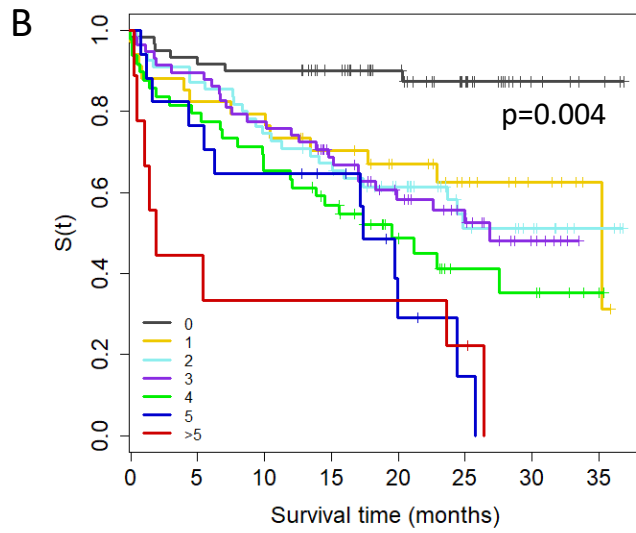
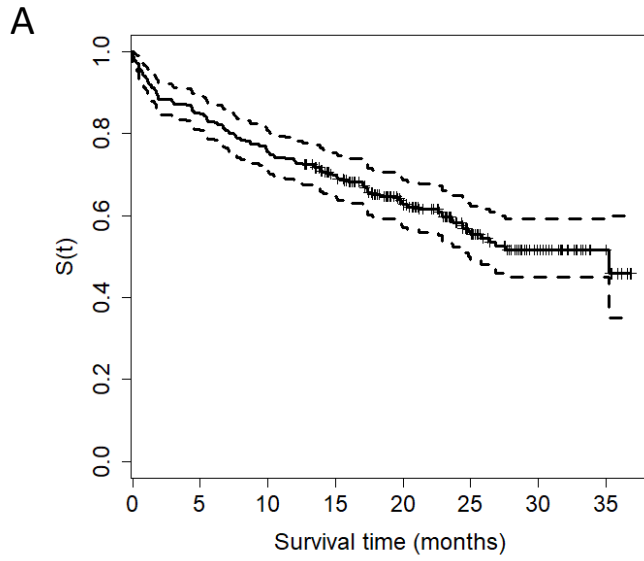


Figure 4

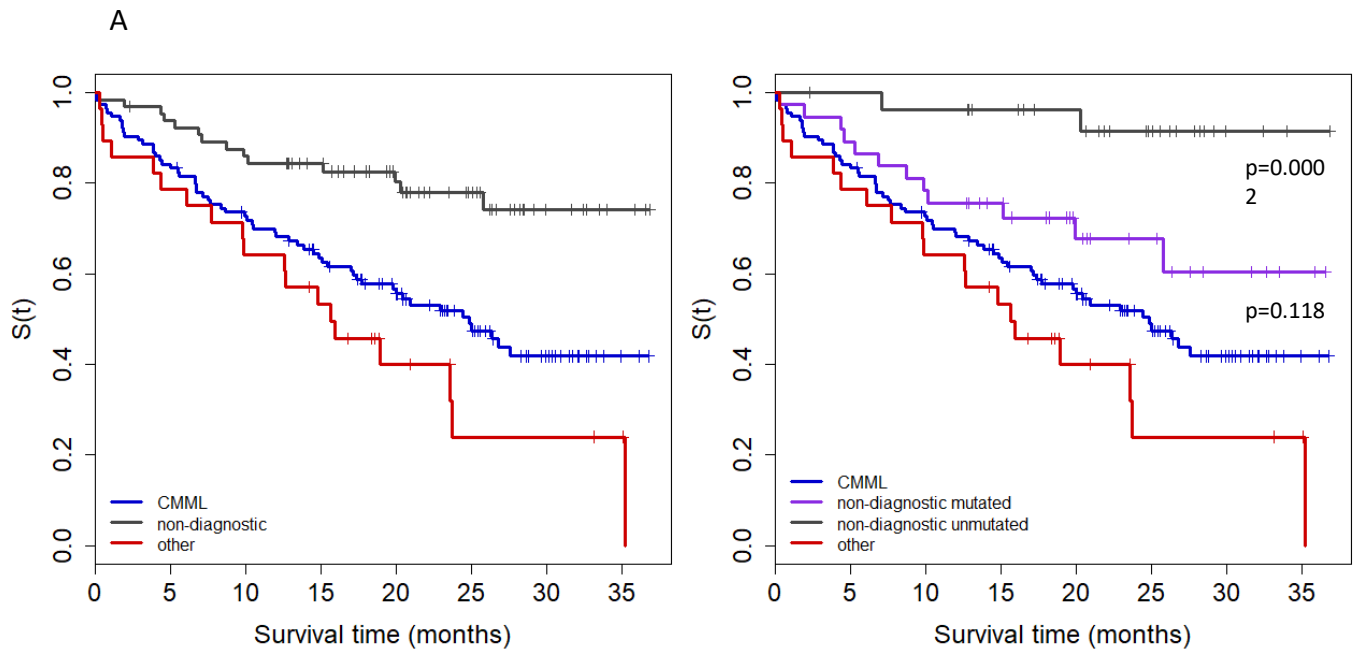


Figure 5

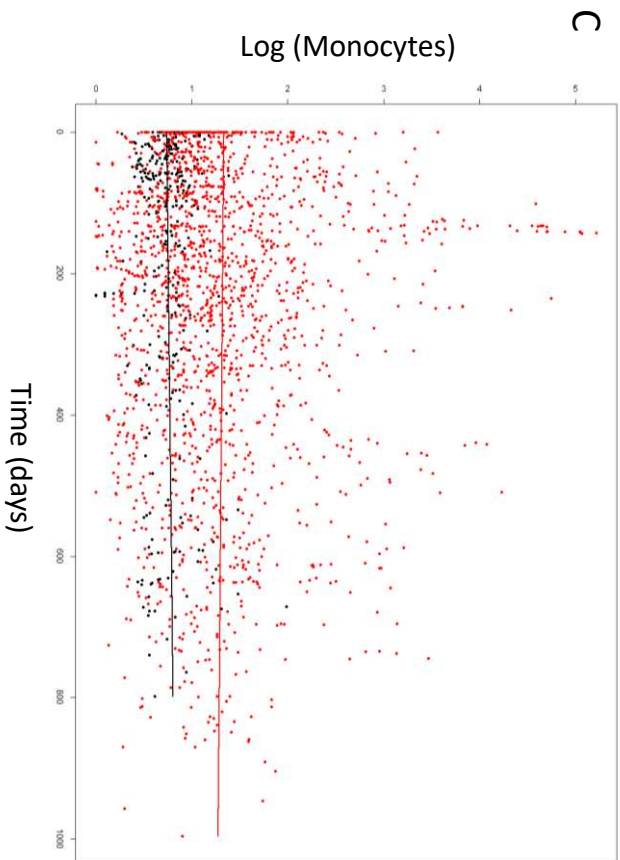
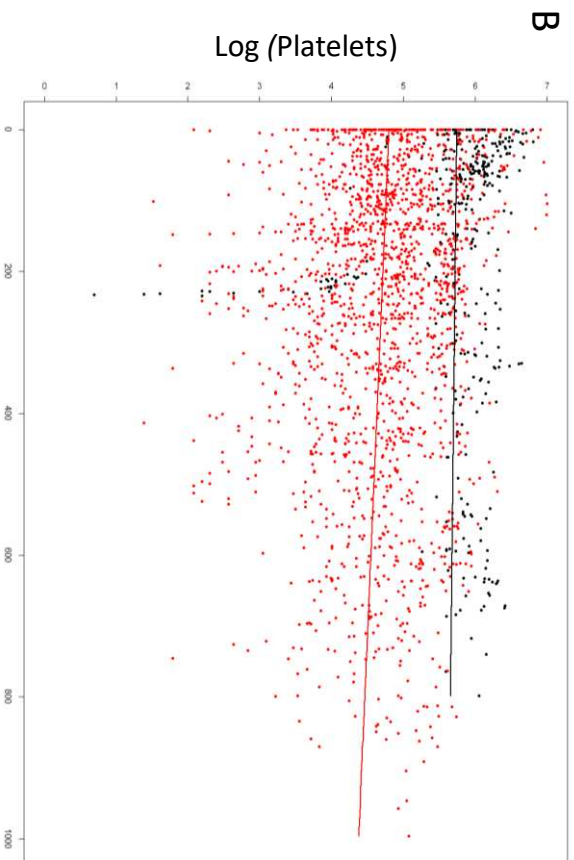
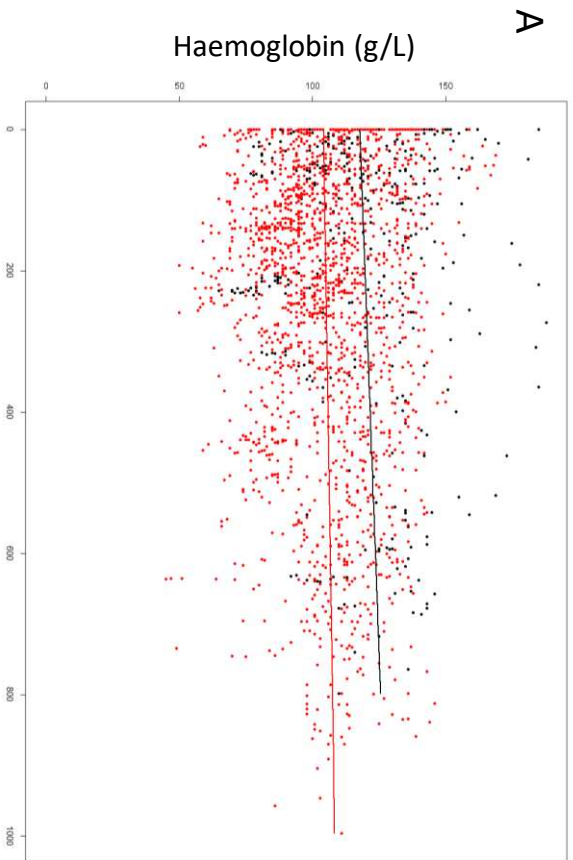


Figure 6

