



This is a repository copy of *The shape of 'rising powers' to come? The antinomies of growth and neoliberal development in Turkey.*

White Rose Research Online URL for this paper:
<https://eprints.whiterose.ac.uk/139686/>

Version: Supplemental Material

Article:

Tansel, C.B. orcid.org/0000-0001-7586-459X (2019) The shape of 'rising powers' to come? The antinomies of growth and neoliberal development in Turkey. *New Political Economy*, 25 (5). pp. 791-812. ISSN 1356-3467

<https://doi.org/10.1080/13563467.2019.1584173>

This is an Accepted Manuscript of an article published by Taylor & Francis in *New Political Economy* on 15/03/2019, available online:
<http://www.tandfonline.com/10.1080/13563467.2019.1584173>

Reuse

Items deposited in White Rose Research Online are protected by copyright, with all rights reserved unless indicated otherwise. They may be downloaded and/or printed for private study, or other acts as permitted by national copyright laws. The publisher or other rights holders may allow further reproduction and re-use of the full text version. This is indicated by the licence information on the White Rose Research Online record for the item.

Takedown

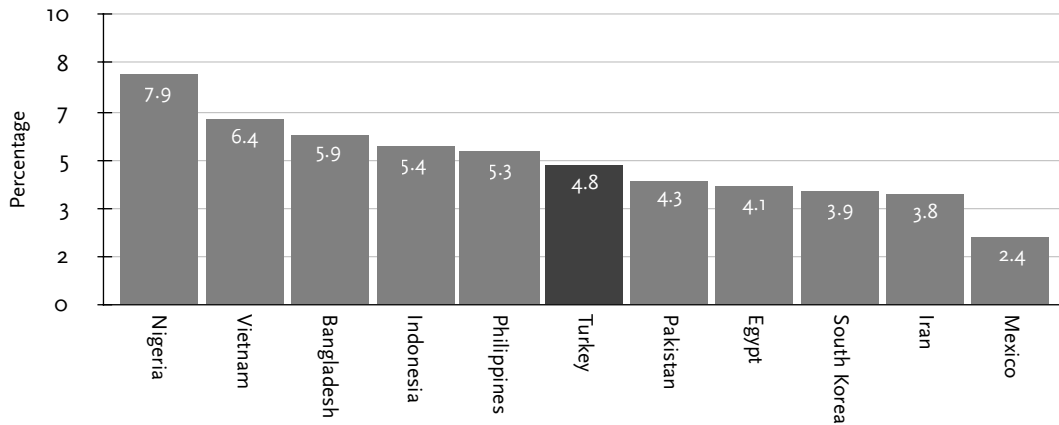
If you consider content in White Rose Research Online to be in breach of UK law, please notify us by emailing eprints@whiterose.ac.uk including the URL of the record and the reason for the withdrawal request.



eprints@whiterose.ac.uk
<https://eprints.whiterose.ac.uk/>

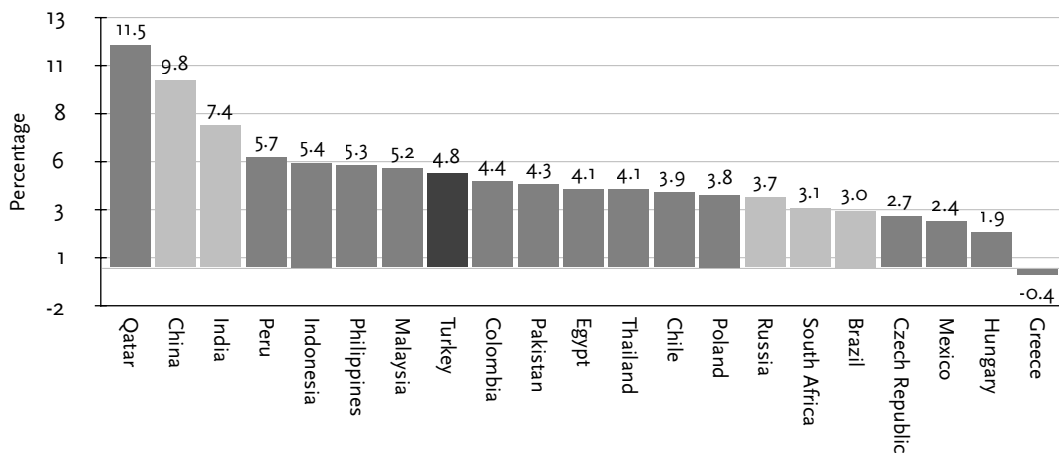
Figures

Figure 1. Average GDP growth (constant LCU) of N-11 countries, 2002–2015



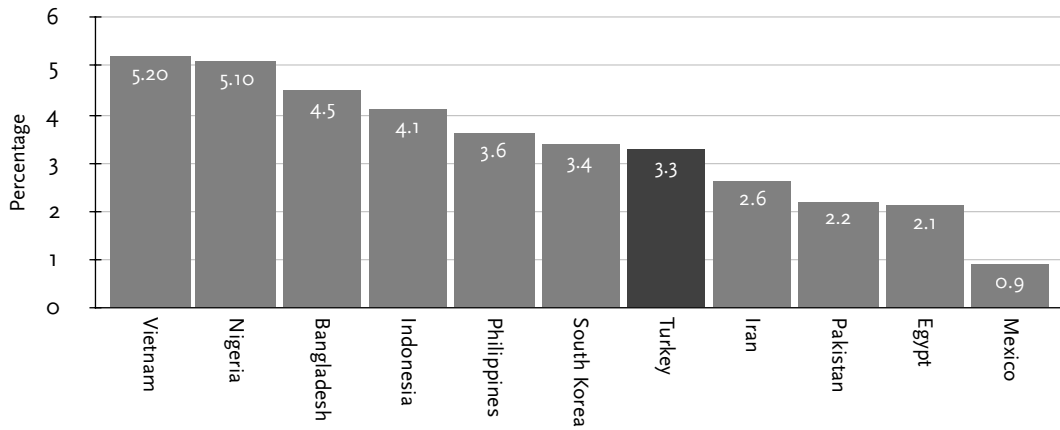
Data retrieved from the World Bank World Development Indicators. Available from: <http://data.worldbank.org/indicator> [accessed 10 July 2018]. See note #13.

Figure 2. Average GDP growth (constant LCU) of FTSE emerging countries, 2002–2015



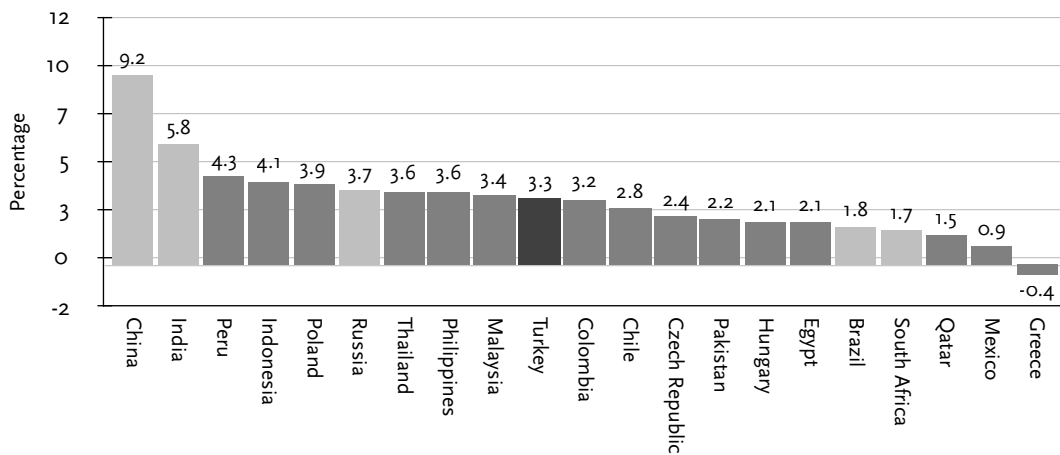
Data retrieved from the World Bank World Development Indicators.

Figure 3. Average GDP per capita growth (constant LCU) in N-11 countries, 2002–2015



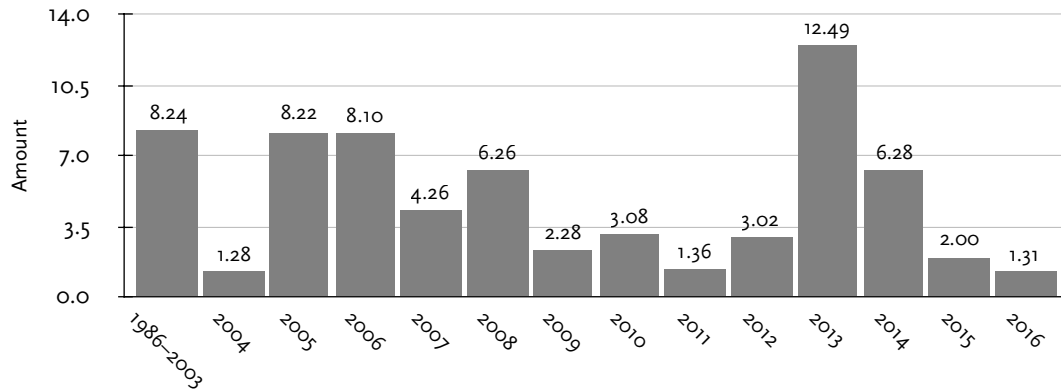
Data retrieved from the World Bank World Development Indicators.

Figure 4. Average GDP per capita growth (constant LCU) in FTSE emerging countries, 2002–2015



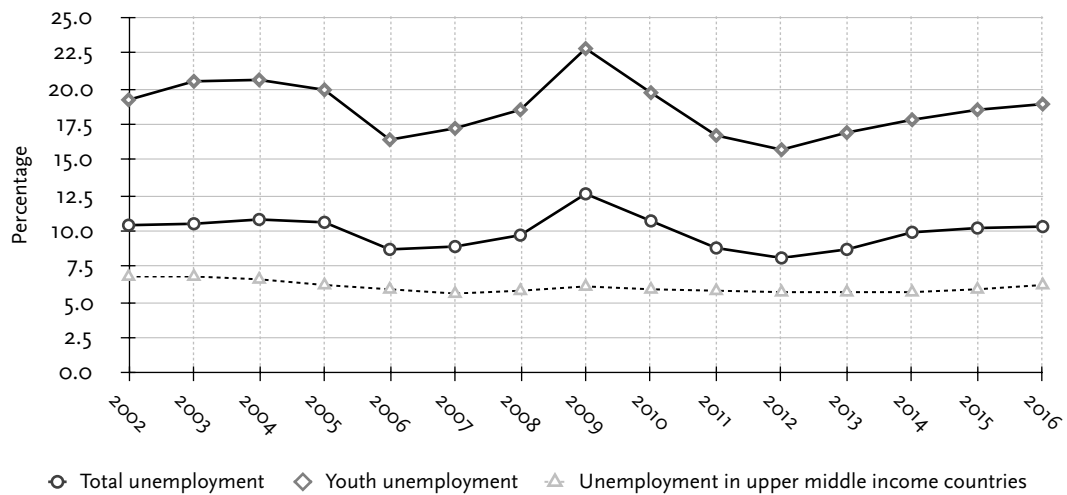
Data retrieved from the World Bank World Development Indicators.

Figure 5. Annual proceeds from privatisation in Turkey (US\$ billion)



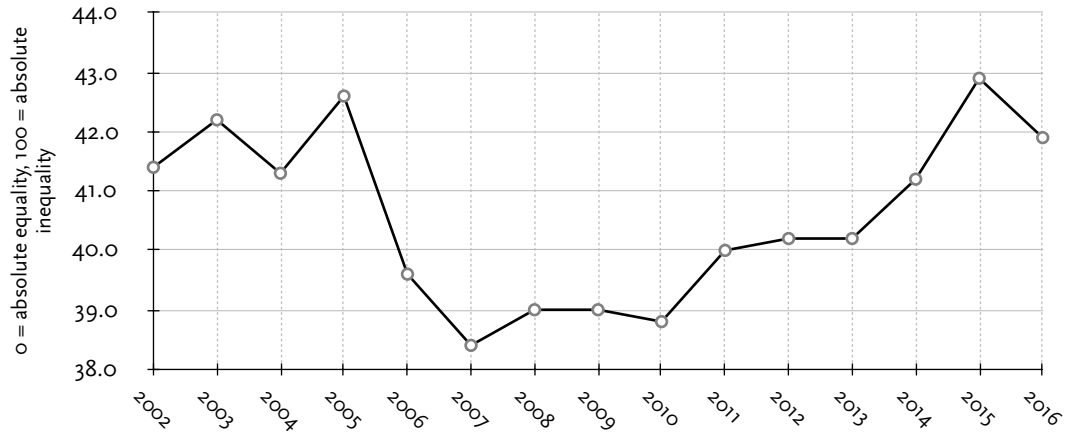
Data retrieved from the Prime Ministry Privatisation Administration's 2016 annual report, cited in the text as ÖİB (2017). Online copy available from: <http://www.oib.gov.tr/dokuman/faaliyet-raporlari/2016-yili-faaliyet-raporu.pdf> [accessed 10 July 2018].

Figure 6. Unemployment in Turkey, 2002–2016



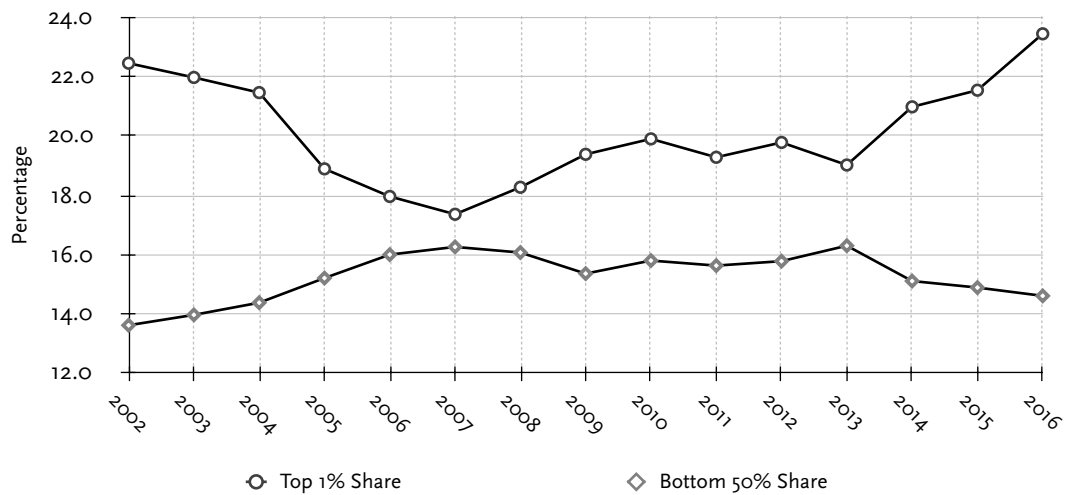
Data retrieved from the World Bank World Development Indicators.

Figure 7. Gini coefficient in Turkey, 2002–2016



Data retrieved from the World Bank World Development Indicators.

Figure 8. Income inequality in Turkey, 2002–2016



Data retrieved from the World Inequality Database. Available from: <https://wid.world/country/turkey> [accessed 10 July 2018]. See also Alvaredo, Assouad and Piketty (2018).