

This is a repository copy of *Assistive technology abandonment::research realities and potentials*.

White Rose Research Online URL for this paper:

<https://eprints.whiterose.ac.uk/137807/>

Version: Accepted Version

Book Section:

Petrie, Helen orcid.org/0000-0002-0100-9846, Carmien, Stefan and Lewis, Andrew William (2018) *Assistive technology abandonment::research realities and potentials*. In: *Proceedings of the 16th International Conference on Computers Helping People with Special Needs (ICCHP 2018)*. LNCS 10897. Springer , Cham, Switzerland

Reuse

Items deposited in White Rose Research Online are protected by copyright, with all rights reserved unless indicated otherwise. They may be downloaded and/or printed for private study, or other acts as permitted by national copyright laws. The publisher or other rights holders may allow further reproduction and re-use of the full text version. This is indicated by the licence information on the White Rose Research Online record for the item.

Takedown

If you consider content in White Rose Research Online to be in breach of UK law, please notify us by emailing eprints@whiterose.ac.uk including the URL of the record and the reason for the withdrawal request.

Assistive Technology Abandonment: Research Realities and Potentials

Helen Petrie, Stefan Carmien and Andrew Lewis

Human Computer Interaction Research Group, Department of Computer Science,
University of York, York, YO10 5GH United Kingdom
{helen.petrie|stefan.carmien|andrew.lewis}@york.ac.uk

Abstract. Abandonment of assistive technologies (ATs) is a serious problem – rates of abandonment can be high, 78% has been reported for hearing aids. The paper argues for the importance of studying the abandonment of ATs by collecting real-time data about the use and non-use of ATs in the lived experience of their users. In the AART-BC Project, we are studying the use and abandonment of mobility ATs including wheelchairs, walkers and prostheses. We present two apps, ESMMobilityAT and ProbMobilityAT to facilitate the collection of real-time data about mobility AT use and problems encountered with these ATs. ESMMobilityAT is based on the experience sampling method (ESM) and asks mobility AT users to answer a short questionnaire about their AT use seven times a day. ProbMobilityAT allows mobility AT users to report problems with their AT when they occur. The apps have been successfully piloted on Android and IOS smartphones, although a number of problems with deployment have been highlighted. They will now be used in a field study with mobility AT uses and can be adapted for other AT domains.

Keywords: Assistive technology abandonment, mobility assistive technology, experience sampling method (ESM), apps for measuring assistive technology use, ESMMobilityAT app, ProbMobilityAT app.

1 Introduction

Although assistive technology (AT) can have a profound positive impact on the daily life of people with disabilities, many initially adopted devices and systems are unfortunately abandoned. An estimated 13 million AT devices are used in North America alone [7] and there are more than eleven million people with disabilities in the United Kingdom, many of whom depend on AT [22]. Studies have reported abandonment rates of up to 78% for hearing aids [10, 16]. Causes for abandonment have many dimensions [10, 14]. For example, AT abandonment may start with the improper fit of a device to a user and to the tasks the user wishes to undertake [17]. If the AT is something that needs to be worn (e.g. a hearing aid), sat in (e.g. a wheelchair) or held (e.g. a joystick to control a computer) and does not physically fit the user's body or is not comfortable for long-term use, it may well be abandoned even though it meets the particular user's needs. If the AT does not enable the performance of the tasks, or all

the tasks, that the user wants to do and cannot (easily) do without an AT, there is also a likelihood of abandonment.

Studies of causes of abandonment have noted that changes in the needs of users are an important predictor for abandonment [11, 13]. Such changes can be permanent (e.g. a progressively worsening sight condition, such as macular degeneration), temporary (e.g. an increased tremor in Parkinson's disease which can be addressed with altered medication) or fluctuating (e.g. increased problems with spelling by people with dyslexia when tired or stressed). Such changes might be accommodated by technology that is easier to adjust to the changing needs of the user or their situation. Difficulties in configuring and modifying the settings of an AT will often lead to abandonment [6]. Compounding the problems of abandonment is the fact that this AT is often needed rather than wanted. AT is not about more easily and effectively doing a task; it is often about doing or not doing the task at all. There is also a positive type of abandonment, which is not using a device or system because the need for it no longer exists or because a better device has become available. For example, blind people have used dedicated devices for detecting the colour of objects for some time (e.g. the Colorino [15], or the Cobolt Talking Colour Detector [1]), these were particularly useful for knowing what colour clothes one might wear. But these dedicated devices have now been replaced by apps for a smartphone (e.g. ColorID [5] or aidColors [2] for iPhones, Color Grab for Android phones [9]). This "good" type of abandonment of AT is interesting, but not in the scope of the current paper.

1.1 Scope of problem and existing research

Critical to the successful introduction and adoption of AT is initially choosing the correct device or system [12]. This is a complex and multidimensional process, requiring both knowledge of available systems and knowledge of the wishes, needs and abilities of the intended user. There are numerous frameworks to aid AT professionals in making this selection [17, 19]. However, in many cases, validation of the correct choice consists merely of the absence of abandonment. And, if abandonment does occur, only a narrative record of the process of abandonment is typically documented, sometimes long after the actual event.

A study by Phillips and Zhao reported that a "change in needs of the user" showed the strongest association with abandonment [11]. Thus, those ATs that cannot accommodate the changing requirements of users were most likely to be abandoned. It follows (and is confirmed by interviews with several AT experts: Bodine, 2003; Kintsch, 2002) that an obstacle to AT retention is difficulty in reconfiguring the device. A survey of abandonment causes by Galvin and Donnell [3] lists "changes in consumer functional abilities or activities" as a critical component of AT abandonment. A study by Scherer and Galvin [18] states that one of the major causes for AT mismatch (and consequently abandonment) is the myth that "a user's assistive technology requirements need to be assessed just once". On-going re-assessment and adjustment to changing needs is the appropriate response. A source for research on the other dimensions of AT abandonment, and the development of outcome metrics to

evaluate adoption success is the ATOMS project at the University of Milwaukee in the USA [12].

The mark of success in the selection and use of AT, and in particular AT for mobility, is the long-term adoption of the technology for day-to-day use. To understand the process of successful adoption, it is also necessary to study the process of abandonment [4]. To understand both use and abandonment of ATs, including mobility ATs, requires an approach [23] that goes beyond retrospective data collection such as surveys and interviews. We believe that gathering real-time data about AT use and problems with the use of AT, over reasonably long periods of time (e.g. weeks or months) will allow us to develop a far deeper understanding of people's lived experience with their ATs, and what factors lead to successful adoption or abandonment. This understanding can then lead to the development of guidelines to support the design and selection of ATs.

2 Studying AT use and abandonment: The Combined Sensor and Experience Sample Method (ESM) Approach in the AART-BC Project

The Adaptive Assistive Rehabilitative Technology – Beyond the Clinic (AART-BC) Project is investigating how to provide health professionals such as occupational therapists and physiotherapists with better information about their patients' use of mobility ATs such as wheelchairs, walkers, and lower limb prostheses. There is currently little data about what AT users do with their mobility aids in their day-to-day lives ("beyond the clinic" where they can be observed by their therapists). Without this information, it is difficult to understand lived experience with ATs, their use and abandonment. This research involves collecting two types of real-time data from mobility AT users: sensor data which objectively tracks their use of the mobility AT, and data about the perceptions of their mobility AT, their mood, fatigue and any problems they are having with the mobility AT. In this paper we will concentrate on the second type of data and how it can be collected.

In the AART-BC project we are exploring the use of the Experience Sampling Method (ESM) developed by Csikszentmihalyi [8] as a way of gathering immediate information about people's lived experience with their mobility AT. This method sends a very short questionnaire to participants at seven pseudo-random times during the day to collect information about their current mobility AT use. In Csikszentmihalyi's original work he used pagers to alert participants to the need to complete a paper questionnaire, now we use an app (ESMMobilityAT) deployed on smartphones to both alert participants and deliver the questionnaire. Participants can answer the questions very quickly via their phone. Each questionnaire should take no more than two minutes to answer. The questions are always the same, so participants become familiar with them, and include mainly multiple choice and Likert item responses to make answering quick and easy (Fig. 1 shows the smartphone questionnaire screens for these two types of questions).

Activity	Fatigue
<p data-bbox="341 506 782 573">What were you doing when you were notified?</p> <p data-bbox="402 607 751 663">Shopping</p> <p data-bbox="402 692 751 748">Housekeeping</p> <p data-bbox="402 777 751 833">Accounting</p> <p data-bbox="402 862 751 918">Food/Medication</p> <p data-bbox="402 947 751 1003">Transport/Telephone</p> <p data-bbox="402 1032 751 1088">Relaxing</p> <p data-bbox="402 1117 751 1173">Something Else</p>	<p data-bbox="801 472 1257 528">When we contacted you, to what extent were you feeling fatigue?</p> <p data-bbox="861 546 1222 591">7 Very Fatigued</p> <p data-bbox="861 613 1222 658">6</p> <p data-bbox="861 680 1222 725">5</p> <p data-bbox="861 748 1222 792">4 Moderately fatigued</p> <p data-bbox="861 815 1222 860">3</p> <p data-bbox="861 882 1222 927">2</p> <p data-bbox="861 949 1222 994">1 Not fatigued</p>

Fig 1. Questionnaire screens for mobility AT users from the ESMMobilityAT app.

In the AART-BC project we are exploring the use of the Experience Sampling Method (ESM) developed by Csikszentmihalyi [8] as a way of gathering immediate information about people’s lived experience with their mobility AT. This method sends a very short questionnaire to participants at seven pseudo-random times during the day to collect information about their current mobility AT use. In Csikszentmihalyi’s original work he used pagers to alert participants to the need to complete a paper questionnaire, now we use an app (ESMMobilityAT) deployed on smartphones to both alert participants and deliver the questionnaire. Participants can answer the questions very quickly via their phone. Each questionnaire should take no more than two minutes to answer. The questions are always the same, so participants become familiar with them, and include mainly multiple choice and Likert item responses to make answering quick and easy (Fig. 1 shows the smartphone questionnaire screens for these two types of questions).

Participants can select what time in the morning requests to answer the questionnaire start and what time in the evening they should finish, to suit their personal schedules. Requests should be no less than one hour apart, but are sent at random

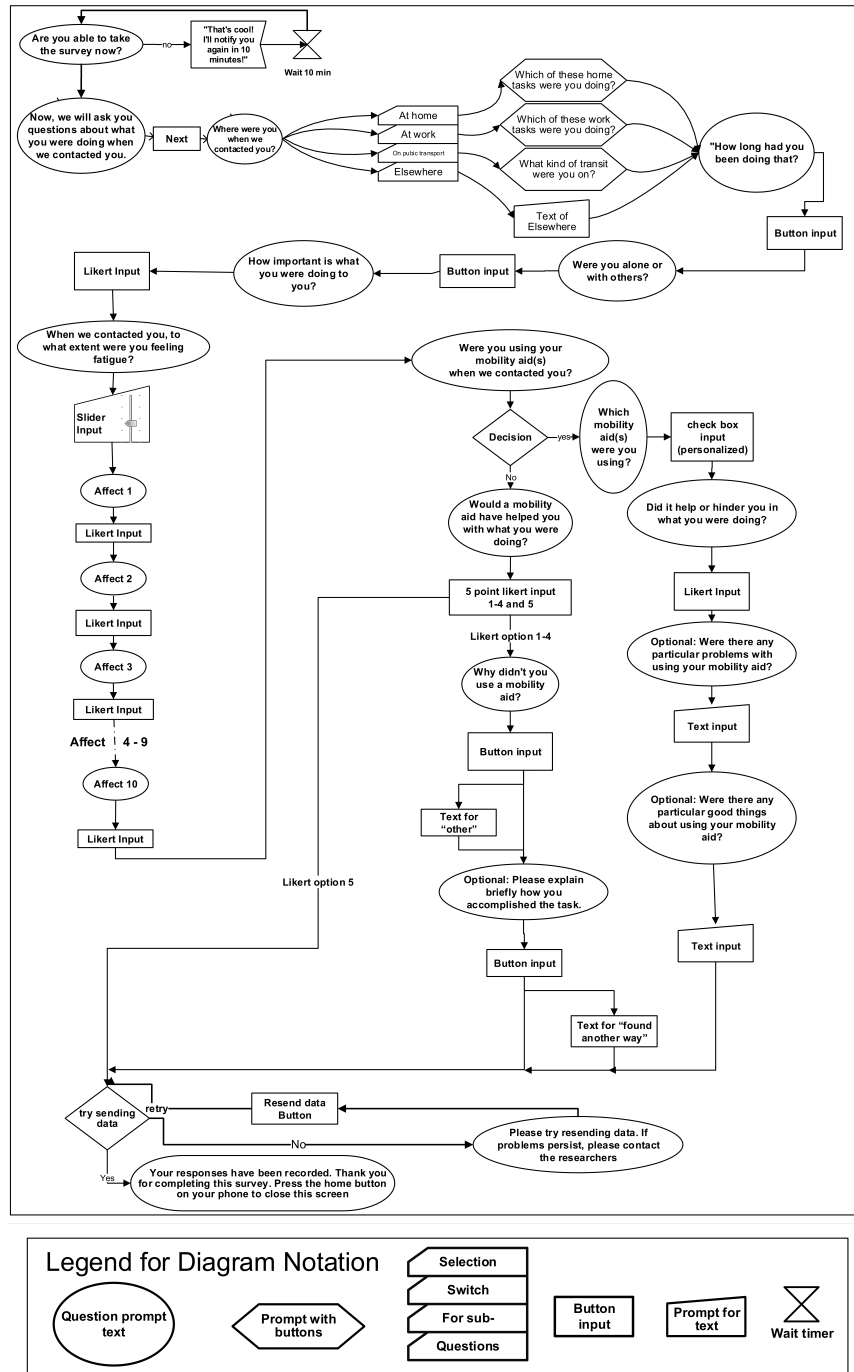


Fig. 2. Questions and logic of the AART-BC ESM questionnaire for studying mobility ATs.

times within those constraints, so that participants cannot predict exactly when they will arrive. Questions ask about what the participant was doing immediately before the request arrived, whether they were using their mobility AT, whether they were having any problems with it, and if so what they were. In addition, participants are given the PANAS-SF [21], a validated short form of the PANAS scale [24] which measures positive and negative affect, what would commonly be called “mood”. Finally, after consultation with occupational therapists and physiotherapists, a question about how fatigued the participant felt was added. The full set of questions and logic of the questionnaire is illustrated in Fig. 2 (apart from the PANAS-SF questions, which are given in Table 1). The questionnaire has been implemented as an app using the framework developed by Thai and Page-Gould [20]. Deployment of the applications is relatively straightforward, via an APK package for Android devices, or an IPA package for iOS devices. It is worth noting that deployment on to iOS devices requires an Enterprise developer licence that involves a paid subscription, but allows the installation of apps without using the Apple store. Apple devices also require “over the air” (OTA) installation from a custom or third party website (e.g. diawi.com) that supports IPA installations. Android deployment requires no special considerations, and the APK package can be downloaded directly or sent to the target device via email for installation.

Positive affect	Negative affect
Active	Afraid
Alert	Ashamed
Attentive	Hostile
Determined	Nervous
Inspired	Upset

Table 1. PANAS-SF questions to measure positive and negative affect.

We have also developed a second app, ProbMobilityAT, which allows participants to report any problems they are having with their mobility AT, when it occurs. This will allow for the collection of much more detailed information about problems which occur with mobility ATs. The questions used by the ProbMobilityAT app are very similar to those in ESMMobility to collect the context of the problem, but the main emphasis is on a free text description of the problem that the participant supplied (see Fig. 3).

We have extensively piloted these two apps, in a range of realistic situations of use, on a range of different IOS and Android smartphones. It emerges that there are numerous problems in deploying such apps, particularly to Android smartphones. For example, if the app is suspended when the phone is in power-saving mode, the pseudo-random notifications will not be received, or will be received later than expected. Similar problems can be found on smartphone that have battery-extending applications installed, as they can aggressively manage the running of background applications. The process of delivering notifications can become even more problematic

when moving between different versions of the Android OS, as there are functional differences in the way that file paths are referenced that can cause an app to crash when it tries to access a resource file such as a custom notification sound. Many of the problems encountered are related to the diverse range of operating system versions now available on smartphone, the number of third-party plugins required to make apps function as expected, and the fact that operating systems may be updated by the user at any time. When operating systems or development tools are upgraded it can take some time for related plugins to be updated by their respective developers. Thus, at the moment, it may not be possible to deploy the app to all smartphones without considerable extra effort. However, in initial use of the apps, users have found the questionnaires easy to understand and quick to answer.

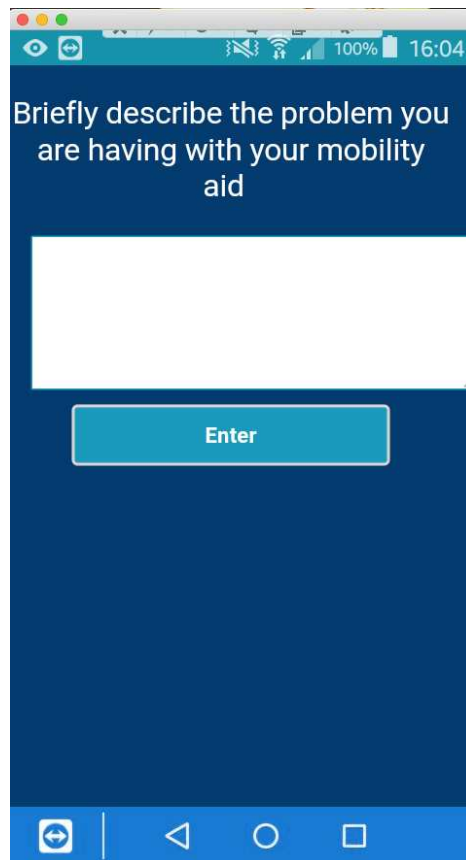


Fig. 3. Problem reporting screen in the ProbMobilityAT app.

3 Discussion

One goal of the AART-BC Project is to develop an understanding of the lived experience of mobility AT users, to further our understanding of their use and abandonment of their ATs. A further goal is to provide better information to clinicians such as occupational therapists and physiotherapists about their patients' use of their mobility ATs in their daily lives "beyond the clinic", to enable them to support their patients more effectively. But the problems of AT use and abandonment are multifaceted and complex. To address these problems both real-time and retrospective data are required. To facilitate the collection of real-time data, we have now developed two apps, ESMMobilityAT and ProbMobilityAT. The first prompts mobility AT users to answer a short questionnaire about their current activities, mobility AT use, any problems with the AT, their mood and fatigue. This questionnaire is delivered seven times a day, to sample across their lived experiences. The second app allows them to report problems with their mobility AT when they occur, meaning that immediate detail about the problems will be recorded.

Deployment of the apps has not been as simple as we anticipated and much attention needs to be paid to how different versions of the Android and IOS operating systems handle a range of issues. Initial reaction from users on the other hand has been very positive, with the questionnaires easy to understand and quick to answer. The smartphone deployed ESM method is not too intrusive for users who have found the whole experience interesting. We are now ready to use the apps in an extensive field study with mobility AT users. We are also planning to extend this approach to the other AT domains such as the use of hearing aids.

4 Acknowledgements

This research was partially funded by an Engineering and Physical Science Research Council (EPSRC) Grant, Adaptive Assistive Rehabilitative Technology: Beyond the Clinic (AART-BC), No EP/M025543/1 (see <http://aartbc.org/>). We are very grateful to all our partners in the project: University of Warwick, University College London, Cardiff University, University of Kent, University of Salford, and Oxford Brookes University. We are also grateful to Xujia "Karlie" Luo and Flo Somerfield for helping to pilot the ESMMobilityAT app.

References

1. Cobolt Systems Ltd. (2018) Talking Colour Detector. <https://www.cobolt.co.uk/products/index/talking-colour-detector1502118659> Accessed 24 March 2018
2. Drive Smart Technologies SL. (2018) aidColors. Available at the Apple Store: <https://itunes.apple.com/us/app/aidcolors/id365495704?mt=8> Accessed 24 March 2018.

3. Galvin JC, Donnell CM (2002) Educating the consumer and caretaker on assistive technology. In: Scherer MJ (ed) *Assistive Technology: Matching Device and Consumer for Successful Rehabilitation*. American Psychological Association, Washington, DC, p 153-167
4. Goodman G, Tiene D, Luft P (2002) Adoption of assistive technology for computer access among college students with disabilities. *Disability and Rehabilitation* 24: 1-3 80-92
5. GreenGar Studio (2018) Color ID Free. Available at the Apple Store: <https://itunes.apple.com/bw/app/color-id-free/id402233600?mt=8> Accessed 24 March 2018
6. Kintsch A, Depaula R (2002) A framework for the adoption of assistive technology. In: Bodine C (ed) *Supporting Learning Through Assistive Technology*. Assistive Technology Partners (SWAAAC 2002), Winter Park, CO, p E3 1-10
7. Laplante ME, Hendershot GE, Moss AJ (1997) The prevalence of need for assistive technology devices and home accessibility features. *Technology and Disability* 6: 17-28
8. Larson R, Csikszentmihalyi M (1983) The experience sampling method. *New Directions for Methodology of Social & Behavioral Science* 15: 41-56
9. Loomatix. (2018) Color Grab (color detection). Available at: <https://play.google.com/store/apps/details?id=com.loomatix.colorgrab&hl=en>. Accessed 24 March 2018.
10. Martin B, McCormack, L. (1999) Issues surrounding assistive technology use and abandonment in an emerging technological culture. In: Bühler C, Knops, H. (eds) *5th European Conference for the Advancement of Assistive Technology (AAATE '99)*. IOS Press, Düsseldorf, Germany, p 852
11. Phillips B, Zhao H (1993) Predictors of assistive technology abandonment. *Assistive Technology* 5: 1
12. Rehabilitation Research Design & Disability (R2d2) Center (2006) Assistive Technology Outcomes Measurement System Project (ATOMS Project). <http://www.uwm.edu/CHS/r2d2/atoms/> Accessed 24 March 2018.
13. Reimer-Reiss M (2000) Factors associated with assistive technology discontinuance. In: *Technology and Persons with Disabilities Conference (CSUN)*. Northridge, CA
14. Reimer-Reiss ML, Wacker RR (1999) Assistive technology use and abandonment among college students with disabilities. *IEJLL: International Electronic Journal for Leadership in Learning* 3: 23.
15. Royal National Institute for Blind People (2018) Colorino talking colour identifier and light detector. <http://shop.rnib.org.uk/colorino-talking-colour-detector.html> Accessed 24 March 2018
16. Scherer MJ (1996) *Living in the State of Stuck: How Technology Impacts the Lives of People with Disabilities* (2ed ed). Brookline Books, Cambridge
17. Scherer MJ, Galvin JC (1996) *Evaluating, Selecting, and Using Appropriate Assistive Technology* Aspen Publishers, Gaithersburg, MD
18. Scherer MJ, Galvin JC (1996) An Outcomes Perspective of Quality Pathways to the Most Appropriate Technology. In: Scherer MJ, Galvin JC (eds) *Evaluating, Selecting*

and Using Appropriate Assistive Technology. Aspen Publishers, Inc, Gaithersburg, MD., p 1-26

19. Scherer MJ, Sax C, Vanbiervliet A et al. (2005) Predictors of Assistive Technology Use: The Importance of Personal and Psychosocial Factors. *Disability and Rehabilitation* 27: 21 1321-1331
20. Thai S, Page-Gould E (2017) Experience Sampler: An Open-Source Scaffold for Building Smartphone Apps for Experience Sampling. *Psychological Methods* Advance online publication: <http://psycnet.apa.org/record/2017-26156-001> Accessed 24 March 2018
21. Thompson ER (2007) Development and validation of an internationally reliable short-form of the positive and negative affect schedule (PANAS). *Journal of cross-cultural psychology* 38: 2 227-242
22. UK Department of Health (2013) Research and development work relating to assistive technology 2012-13 Presented to Parliament pursuant to Section 22 of the Chronically Sick and Disabled Persons Act 1970. <http://www.dh.gov.uk/publications> Accessed 24 March 2018
23. Verza R, Carvalho MLL, Battaglia MA et al. (2006) An interdisciplinary approach to evaluating the need for assistive technology reduces equipment abandonment. *Multiple sclerosis* (Houndmills, Basingstoke, England) 12: 88-93
24. Watson D, Clark LA, Tellegen A (1988) Development and validation of brief measures of positive and negative affect: the PANAS scales. *Journal of Personality and Social Psychology* 54: 6 1063 - 1070