

This is a repository copy of *Environmental and taxonomic controls of carbon and oxygen stable isotope composition in Sphagnum across broad climatic and geographic ranges*.

White Rose Research Online URL for this paper:

<https://eprints.whiterose.ac.uk/136930/>

Version: Published Version

Article:

Granath, Gustaf, Rydin, Håkan, Baltzer, Jennifer L. et al. (43 more authors) (2018)
Environmental and taxonomic controls of carbon and oxygen stable isotope composition in Sphagnum across broad climatic and geographic ranges. *Biogeosciences*. pp. 5189-5202.
ISSN 1726-4189

<https://doi.org/10.5194/bg-15-5189-2018>

Reuse

This article is distributed under the terms of the Creative Commons Attribution (CC BY) licence. This licence allows you to distribute, remix, tweak, and build upon the work, even commercially, as long as you credit the authors for the original work. More information and the full terms of the licence here:

<https://creativecommons.org/licenses/>

Takedown

If you consider content in White Rose Research Online to be in breach of UK law, please notify us by emailing eprints@whiterose.ac.uk including the URL of the record and the reason for the withdrawal request.



Environmental and taxonomic controls of carbon and oxygen stable isotope composition in *Sphagnum* across broad climatic and geographic ranges

Gustaf Granath¹, Håkan Rydin¹, Jennifer L. Baltzer², Fia Bengtsson¹, Nicholas Boncek³, Luca Bragazza^{4,5,6}, Zhao-Jun Bu^{7,8}, Simon J. M. Caporn⁹, Ellen Dorrepaal¹⁰, Olga Galanina^{11,39}, Mariusz Gałka¹², Anna Ganeva¹³, David P. Gillikin¹⁴, Irina Goia¹⁵, Nadezhda Goncharova¹⁶, Michal Hájek¹⁷, Akira Haraguchi¹⁸, Lorna I. Harris¹⁹, Elyn Humphreys²⁰, Martin Jiroušek^{17,21}, Katarzyna Kajukalo¹², Edgar Karofeld²², Natalia G. Koronatova²³, Natalia P. Kosykh²³, Mariusz Lamentowicz¹², Elena Lapshina²⁴, Juul Limpens²⁵, Maiju Linkosalmi²⁶, Jin-Ze Ma^{7,8}, Marguerite Mauritz²⁷, Tariq M. Munir^{28,29}, Susan M. Natali³⁰, Rayna Natcheva¹³, Maria Noskova^{39,†}, Richard J. Payne^{31,32}, Kyle Pilkington³, Sean Robinson³³, Bjorn J. M. Robroek³⁴, Line Rochefort³⁵, David Singer^{36,40}, Hans K. Stenøien³⁷, Eeva-Stiina Tuittila³⁸, Kai Vellak²², Anouk Verheyden¹⁴, James Michael Waddington⁴¹, and Steven K. Rice³

¹Department Ecology and Genetics, Uppsala University, Norbyvägen 18D, Uppsala, Sweden

²Biology Department, Wilfrid Laurier University, 75 University Ave. W., Waterloo, ON N2L 3C5, Canada

³Department of Biological Sciences, Union College, Schenectady, NY, USA

⁴Department of Life Science and Biotechnologies, University of Ferrara, Corso Ercole I d'Este 32, 44121 Ferrara, Italy

⁵Swiss Federal Institute for Forest, Snow and Landscape Research, WSL Site Lausanne, Station 2, 1015 Lausanne, Switzerland

⁶Ecole Polytechnique Fédérale de Lausanne EPFL, School of Architecture, Civil and Environmental Engineering ENAC, Laboratory of ecological systems ECOS, Station 2, 1015 Lausanne, Switzerland

⁷Institute for Peat and Mire Research, Northeast Normal University, State Environmental Protection Key Laboratory of Wetland Ecology and Vegetation Restoration, 5268 Renmin St., Changchun 130024, China

⁸Jilin Provincial Key Laboratory for Wetland Ecological Processes and Environmental Change in the Changbai Mountains, 5268 Renmin St., Changchun 130024, China

⁹School of Science and the Environment, Division of Biology and Conservation Ecology, Manchester Metropolitan University, Manchester, M1 5GD, UK

¹⁰Climate Impacts Research Centre, Dept. of Ecology and Environmental Science, Umeå University, 98107 Abisko, Sweden

¹¹Institute of Earth Sciences, St. Petersburg State University, Universitetskaya nab., 7–9, Russia, 199034, St. Petersburg, Russia

¹²Laboratory of Wetland Ecology and Monitoring & Department of Biogeography and Paleoecology, Adam Mickiewicz University in Poznan, Bogumiła Krygowskiego 10, 61-680 Poznan, Polen

¹³Institute of Biodiversity and Ecosystem Research, Bulgarian Academy of Sciences, 2 Yurii Gagarin Str., 1113 Sofia, Bulgaria

¹⁴Department of Geology, Union College, Schenectady, NY, USA

¹⁵Babeş-Bolyai University, Faculty of Biology and Geology, Department of Taxonomy and Ecology, 42 Republicii Street, 400015, Cluj Napoca, Romania

¹⁶Institute of Biology of Komi Scientific Centre of the Ural Branch of the Russian Academy of Science, Syktyvkar, Russia

¹⁷Department of Botany and Zoology, Faculty of Science, Masaryk University, Kotlarska 2, 61137, Brno, Czech Republic

¹⁸Department of Biology, The University of Kitakyushu, Kitakyushu 8080135, Japan

¹⁹Department of Geography, McGill University, 805 Sherbrooke Street West, Montreal, QC H3A 0B9, Canada

²⁰Department of Geography and Environmental Studies, Carleton University, Ottawa, Canada

- ²¹Department of Plant Biology, Faculty of AgriSciences, Mendel University in Brno, Zemedelska 1, 61300, Brno, Czech Republic
- ²²University of Tartu, Institute of Ecology and Earth Sciences, Lai st 40, Tartu 51005, Estonia
- ²³Laboratory of Biogeocenology, Institute of Soil Science and Agrochemistry, Siberian Branch of Russian Academy of Sciences, Ak. Lavrent'ev ave., 8/2, Novosibirsk, 630090, Russia
- ²⁴Yugra State University, Chekhova str, 16, Khanty-Mansiysk, 628012, Russia
- ²⁵Plant Ecology and Nature conservation group, Wageningen University, Droevendaalse steeg 3a, 6708 PD Wageningen, the Netherlands
- ²⁶Finnish Meteorological Institute, Erik Palménin aukio 1, 00560 Helsinki, Finland
- ²⁷Center for Ecosystem Science and Society (EcoSS), Department of Biological Sciences, Northern Arizona University, P.O. Box 5620, Flagstaff, AZ 86011, USA
- ²⁸Department of Geography, University of Calgary, 2500 University Dr. NW, Calgary, AB T2N 1N4, Canada
- ²⁹Department of Geology, St. Mary's University, Calgary, AB T2X 1Z4, Canada
- ³⁰Woods Hole Research Center, 149 Woods Hole Road, Falmouth, MA 02540, USA
- ³¹Environment, University of York, York YO105DD, UK
- ³²Penza State University, Krasnaya str., 40, 440026 Penza, Russia
- ³³Department of Biology, SUNY-Oneonta, Oneonta, NY, USA
- ³⁴Biological Sciences, University of Southampton, Southampton SO17 1BJ, UK
- ³⁵Department of Plant Science and Center for Northern Studies, Laval University, Québec, QC, Canada
- ³⁶Laboratory of Soil Biodiversity, Institute of Biology, University of Neuchâtel, Rue Emile-Argand 11, 2000 Neuchâtel, Switzerland
- ³⁷NTNU University Museum, Norwegian University of Science and Technology, 7491 Trondheim, Norway
- ³⁸Peatland and soil ecology group, School of Forest Sciences, University of Eastern Finland, B.O. Box 111, 80110 Joensuu, Finland
- ³⁹Komarov Botanical Institute Russian Academy of Sciences, Professor Popov st. 2, 197376, St. Petersburg, Russia
- ⁴⁰Department of Zoology, Institute of Biosciences, University of São Paulo, 05508-090, São Paulo, Brazil
- ⁴¹School of Geography and Earth Sciences, McMaster University, 1280 Main Street West, Hamilton, ON L8S 4K1, Canada
- †deceased, 27 August 2017

Correspondence: Gustaf Granath (gustaf.granath@gmail.com)

Received: 7 March 2018 – Discussion started: 28 March 2018

Revised: 25 July 2018 – Accepted: 7 August 2018 – Published: 29 August 2018

Abstract. Rain-fed peatlands are dominated by peat mosses (*Sphagnum* sp.), which for their growth depend on nutrients, water and CO₂ uptake from the atmosphere. As the isotopic composition of carbon (^{12,13}C) and oxygen (^{16,18}O) of these *Sphagnum* mosses are affected by environmental conditions, *Sphagnum* tissue accumulated in peat constitutes a potential long-term archive that can be used for climate reconstruction. However, there is inadequate understanding of how isotope values are influenced by environmental conditions, which restricts their current use as environmental and palaeoenvironmental indicators. Here we tested (i) to what extent C and O isotopic variation in living tissue of *Sphagnum* is species-specific and associated with local hydrological gradients, climatic gradients (evapotranspiration, temperature, precipitation) and elevation; (ii) whether the C isotopic signature can be a proxy for net primary productivity (NPP) of *Sphagnum*; and (iii) to what extent *Sphagnum* tissue $\delta^{18}\text{O}$ tracks the $\delta^{18}\text{O}$ isotope signature of precipitation. In total, we analysed 337 samples from 93 sites across North America and Eurasia us-

ing two important peat-forming *Sphagnum* species (*S. magellanicum*, *S. fuscum*) common to the Holarctic realm. There were differences in $\delta^{13}\text{C}$ values between species. For *S. magellanicum* $\delta^{13}\text{C}$ decreased with increasing height above the water table (HWT, $R^2 = 17\%$) and was positively correlated to productivity ($R^2 = 7\%$). Together these two variables explained 46% of the between-site variation in $\delta^{13}\text{C}$ values. For *S. fuscum*, productivity was the only significant predictor of $\delta^{13}\text{C}$ but had low explanatory power (total $R^2 = 6\%$). For $\delta^{18}\text{O}$ values, approximately 90% of the variation was found between sites. Globally modelled annual $\delta^{18}\text{O}$ values in precipitation explained 69% of the between-site variation in tissue $\delta^{18}\text{O}$. *S. magellanicum* showed lower $\delta^{18}\text{O}$ enrichment than *S. fuscum* (−0.83‰ lower). Elevation and climatic variables were weak predictors of tissue $\delta^{18}\text{O}$ values after controlling for $\delta^{18}\text{O}$ values of the precipitation. To summarize, our study provides evidence for (a) good predictability of tissue $\delta^{18}\text{O}$ values from modelled annual $\delta^{18}\text{O}$ values in precipitation, and (b) the possibility of relating tissue $\delta^{13}\text{C}$ values

to HWT and NPP, but this appears to be species-dependent. These results suggest that isotope composition can be used on a large scale for climatic reconstructions but that such models should be species-specific.

1 Introduction

Peatlands in temperate, boreal and arctic regions form large reservoirs of carbon, which are vulnerable to release under expected changes in global climate and land management (Rydin and Jeglum, 2013; Loisel et al., 2014). Because peat decomposes slowly and gradually accumulates, it preserves information on past peatland ecosystem dynamics and responses to allogenic and autogenic forcings. Palaeoenvironmental studies of peat may, therefore, help to anticipate the future responses of these globally important ecosystems to climate change (Loader et al., 2016). Past climate and local hydrology can be estimated using a variety of biotic and biogeochemical proxies, including the $\delta^{13}\text{C}$ and $\delta^{18}\text{O}$ values of organic material (e.g. van der Knaap, 2011; Royles et al., 2016; Lamentowicz et al., 2015). However, the environmental (e.g. climate) and biotic (e.g. species identity) controls of isotope differentiation in peatland-dwelling plants are still poorly understood and current assumptions regarding these controlling factors are yet to be tested on larger spatial scales.

Sphagnum mosses are the most dominant peat-forming plant group in acidic peatlands. The composition of stable isotopes of carbon and oxygen in their tissues is affected by different environmental conditions, operating through their impact on fractionation processes. When not submerged, carbon isotope signals in bulk tissues or components such as cellulose depend mainly on the concentration and isotopic composition of CO_2 in the chloroplast, which alters isotope discrimination during biochemical fixation of CO_2 (Farquhar et al., 1989; O'Leary, 1988). In mosses, the CO_2 concentration in the chloroplast, $[\text{CO}_2]_c$, is determined by temperature, light availability, CO_2 partial pressure and, most importantly, plant water status (Finsinger et al., 2013; van der Knaap et al., 2011; Ménot and Burns, 2001; Ménot-Combes et al., 2004; Royles et al., 2014; Skrzypek et al., 2007a; Kaislahti Tillman et al., 2013). When wet, external water films on leaf surfaces impede diffusion and $[\text{CO}_2]_c$ is lowered (Rice and Giles, 1996; Rice, 2000; Williams and Flanagan, 1996); consequently, the proportion of fixed ^{13}C increases due to internal drawdown of the preferred isotope ^{12}C . When submerged, assimilation of respired or methane-derived CO_2 can alter $[\text{CO}_2]$ and also the isotopic composition of C in *Sphagnum* (Raghoebarsing et al., 2005). Even when not submerged, respiratory carbon can be refixed by *Sphagnum* (Turetsky and Wieder, 1999; Limpens et al., 2008). Given that respired CO_2 is isotopically lighter than that in the atmosphere, it may also contribute to variation in tissue isotope values. Despite many detailed studies, there remains uncertainty about how

the multiple controls on ^{13}C isotope values combine to determine isotopic composition, and how universal the proposed mechanisms are on a global scale. This uncertainty currently restricts the utility of C isotope signals as palaeoclimatic or palaeoenvironmental indicators in peatlands (Loader et al., 2016).

Oxygen isotope values in moss tissues depend on the isotopic composition of the water sources, enrichment associated with evaporation from the moss surface and biochemical fractionation (Dawson et al., 2002). Once on the plant, ^{18}O present in water equilibrates with that in atmospheric CO_2 prior to fixation as well as being incorporated directly during hydrolysis reactions, especially during the initial stages of carbon fixation (Gessler et al., 2014; Sternberg et al., 2006). Hence, variation in tissue oxygen isotopes reflect environmental conditions that control source water (rainfall, snowfall, groundwater) as well as fractionation caused by evaporation prior to fixation, which is controlled by micrometeorological conditions (mainly temperature, relative humidity and incident energy) (Daley et al., 2010; Moschen et al., 2009; Royles et al., 2013; Kaislahti Tillman et al., 2010). Oxygen isotope composition has, therefore, been used to reconstruct climatic conditions and to infer the dominant water source in peatlands (Aravena and Warner, 1992; Ellis and Rochefort, 2006; van der Knaap et al., 2011). Ongoing measurements of oxygen isotopes in precipitation across the globe (Bowen, 2010; IAEA/WMO, 2015) have generated models that predict spatial patterns in oxygen isotope composition of precipitation based on temperature, elevation, atmospheric residence time and circulation patterns (e.g. Bowen, 2010). Once isotopic composition of the source water is accounted for, variation in moss tissue isotopic values should be largely determined by fractionation that accompanies evaporation from the surface of plants. How well oxygen isotopes in *Sphagnum* tissues reflect atmospheric water or plant surface water depends on local weather conditions such as precipitation, air temperature and humidity. For example, Bilali et al. (2013) suggest that oxygen isotopes in *Sphagnum* mosses from maritime bogs will track variation in precipitation patterns whereas isotopic values in continental habitats will be more dependent on summer temperature, as temperature and humidity are more variable in those regions. On local scales, oxygen isotope values also vary as a function of temperature and humidity. Aravena and Warner (1992) found differences that correspond with changes in microtopography. Elevated microsites (hummocks) were enriched in ^{18}O , which they ascribed to higher evaporation compared to that of neighbouring wet depressions (hollows). However, as with ^{13}C , there remains uncertainty in how ^{18}O signatures relate to environmental factors and species identity and to what extent global ^{18}O patterns in precipitation dominate over local processes.

Stable isotopes can also serve as indicators of net primary productivity (NPP) (Rice and Giles, 1996; Williams and Flanagan, 1996; Rice, 2000). However, few studies have explored these relationships in the field. In a multispecies

comparison of peat mosses, Rice (2000) found that plants with higher relative growth rates had lower discrimination against ^{13}C and therefore were more enriched in ^{13}C . This was attributed to the local environment, with fast-growing plants of wetter microhabitats having thicker water films that inhibit CO_2 diffusion into the plant and to species-specific differences in maximum rates of photosynthesis. Both factors would reduce internal $[\text{CO}_2]$ and thereby lower discrimination. In line with this, a warming experiment by Deane-Coe et al. (2015) reported a positive relationship between moss net NPP and $\delta^{13}\text{C}$ values for tundra mosses (*Dicranum*, *Pleurozium*, *Sphagnum*). Clearly, carbon isotope values show promise as indicators of peat moss contemporary growth and potentially as an NPP proxy in palaeoecological studies. This could be particularly valuable to differentiate productivity and decomposition controls in long-term carbon accumulation studies. To date, we are not aware of attempts to explore the robustness of these relationships across large spatial scales.

Together, tissue carbon and oxygen isotope compositions are controlled both by environmental factors at micro- and macro-scales, and by species-specific differences that relate to water balance and carbon dynamics in peat mosses. Palaeoecological studies rely on such environment–isotope relationships for environmental reconstructions (Ellis and Rochefort, 2006; van der Knaap et al., 2011). The underlying mechanisms are, however, rarely fully explored using known environmental gradients (but see Ménot and Burns, 2001 for an example) or only tested across narrow bands of environmental variation, often with sets of correlated environmental factors (Loader et al., 2016). Moreover, interactions with biotic factors such as species identity have received little attention despite the large variations in *Sphagnum* species dominance commonly observed down peat cores (e.g. Ménot and Burns, 2001). Here we aim to provide a robust, cross-scale evaluation of how environmental factors and species identity influence the C and O isotope compositions of *Sphagnum* using two common and widely distributed peat-forming species (*S. magellanicum* and *S. fuscum*) that are primarily rain-fed. To achieve this, we performed an unprecedented large sampling campaign across the Holarctic realm.

Specifically, we (i) investigated relationships between C and O isotope values and factors known to influence plant water availability (height above the water table – HWT, temperature, evaporation and precipitation) and CO_2 partial pressure (elevation), and tested whether their effects were modified by species identity; (ii) tested the prediction that *Sphagnum* tissue $\delta^{13}\text{C}$ values are associated with NPP; and (iii) tested whether tissue $\delta^{18}\text{O}$ in rain-fed *Sphagna* is predicted by the $\delta^{18}\text{O}$ isotope signature in precipitation but modified by negative relationships with precipitation and positive ones with temperature/evaporation. Across these objectives we examined how C and O isotope values varied with scale (within-peatland versus between-peatlands) and to what ex-

tent HWT and NPP could explain variation within and between peatlands.

2 Materials and methods

2.1 Study species and collection sites

Our study focused on two common peat-forming *Sphagnum* species, *S. fuscum* (Schimp.) H. Klinggr. (circumpolar distribution) and *S. magellanicum* Brid. (cosmopolitan distribution). In general, these species are confined to primarily rain-fed peatlands (bogs) and described as hummock (*S. fuscum*) and lawn (*S. magellanicum*) species. However, *S. magellanicum* is a species with a very broad niche and found in a range of habitats with varying degrees of groundwater influence (Flatberg, 2013). These species are easy to identify, but recent research has shown that the dark European morph of *S. fuscum* is conspecific to the North American *S. beothuk* (Kyrkjeeide et al., 2015), and *S. magellanicum* has been shown to consist of two genetically diverged morphotypes (Kyrkjeeide et al., 2016) that recently were separated at the species level (Hassel et al., 2018). Unpublished genetic data suggest that samples collected in our study consist of both *S. magellanicum* morphs (approximately 50/50) and possibly one or two samples of *S. beothuk* (Narjes Yousefi, personal communication, 2018). Hence, we here treat our species as aggregates (i.e. species collectiva), *S. fuscum* coll. and *S. magellanicum* coll.

The two species were sampled across the Holarctic region at a total of 93 sites (Fig. 1; Table S1 in the Supplement) at the end of the growing season. To make comparisons between species and between sites possible, we focused on habitats where both species can be found and have low influence of surrounding groundwater. Thus, we only sampled bogs (including a few poor fens with ombrotrophic character) and open (no tree canopy) habitats. Sampling was conducted mainly during 2013, but a few sites were sampled at a similar time of year in 2014. At each site two patches (minimum 10 m apart) for each species were sampled (except for 11 sites that contained only one patch for one species). At each sampling patch we recorded moss growth, HWT and GPS coordinates, and collected a moss sample (78 cm² and 5 cm deep) at the end of the growing season (September to November depending on location and generally coincided with when there was a risk of the first snowfall to occur). Moss samples were dried (24 h at 60–65 °C) within 72 h or immediately frozen and later thawed and dried. The apical part (the capitula, top 1 cm) of the dried plant shoots was used for isotope analysis, while the stem section was used for bulk density estimation to calculate moss NPP.

2.2 Isotope determination

Ten capitula from each patch were selected and finely chopped with a single-edge razor by hand and mixed. Ca-

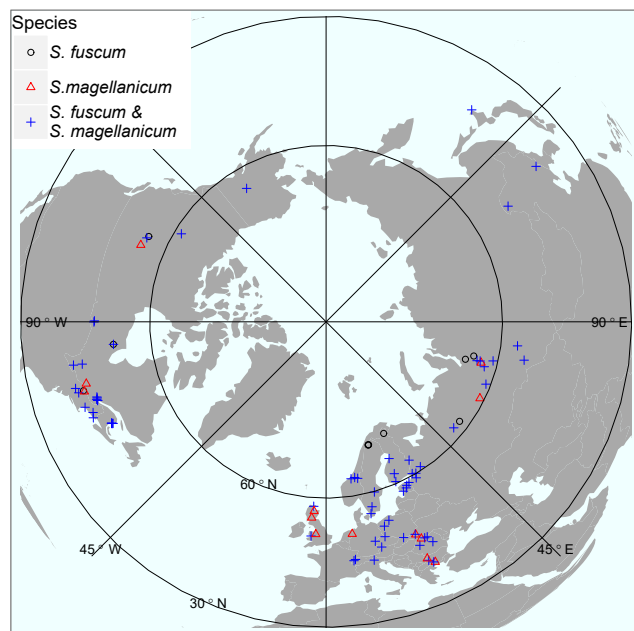


Figure 1. Map illustrating sample sites for the investigated species. At some sites only one of the two *Sphagnum* species was sampled, indicated by red triangles or black circles. Otherwise sites contained both species (blue crosses). The map is centred on the North Pole and has an orthographic projection. Geographical ranges: latitude 41.6–69.1 N, elevation 2 – 1829 m a.s.l. See Table S1 for details.

pitula were chosen as they reflect the most recently fixed organic matter and should relate better to recent growing season conditions. In *Sphagnum*, $\delta^{13}\text{C}$ from the capitulum is similar to that of branches within the top 15 cm of plants but is approximately 1–2‰ less negative than stems (Loader et al., 2007). For $\delta^{18}\text{O}$, the offset between branches and stems is around 1‰ (Moschen et al., 2009). Standard deviations of repeated samples were 0.6‰ and 0.7‰ for $\delta^{13}\text{C}$ and $\delta^{18}\text{O}$, respectively. Approximately 0.5 mg of dry sample was packed in tin cups for $\delta^{13}\text{C}$ analyses, and ~ 0.2 mg in silver cups for $\delta^{18}\text{O}$ analyses. Samples were analysed at Union College (Schenectady, NY, USA) using a Thermo Delta Advantage mass spectrometer in continuous flow mode connected (via a ConFlo IV) to a Costech Elemental Analyzer for $\delta^{13}\text{C}$ analysis or a Thermo TC/EA for $\delta^{18}\text{O}$ analyses. Isotope values are presented as $1000 \times (R_{\text{sample}}/R_{\text{standard}} - 1)$, where R_{sample} and R_{standard} are the ratios of heavy to light isotopes (e.g. $^{13}\text{C}/^{12}\text{C}$) and are referenced to VPDB and VSMOW for C and O, respectively. Carbon isotope data were corrected using sucrose (IAEA-CH-6, -10.449 ‰), acetanilide (in house, -37.07 ‰) and caffeine (IAEA-600, -27.771 ‰). Oxygen isotope data were corrected using sucrose (IAEA-CH-6, 36.4 ‰), cellulose (IAEA-C3, 31.9 ‰) and caffeine (IAEA-600, -3.5 ‰) with values from Hunsinger et al. (2010). Oxygen isotope standardization was further checked with the whole wood standards USGS54 and

USGS56. The combined instrument uncertainty for $\delta^{13}\text{C}$ (VPDB) is < 0.1 ‰ based on the in-house acetanilide standard and < 0.5 ‰ for $\delta^{18}\text{O}$ (VSMOW) based on the cellulose standard (IAEA-C3).

We performed isotope analyses on whole-plant tissue rather than on cellulose extracts. In living *Sphagnum* samples, there is a strong linear relationship between the isotopic composition of these two components for both $\delta^{13}\text{C}$ (R^2 values 0.89–0.96; Kaislahti Tillman et al., 2010; Ménot and Burns, 2001; Skrzypek et al., 2007b) and for $\delta^{18}\text{O}$ (R^2 values 0.53–0.69; Kaislahti Tillman et al., 2010; Jones et al., 2014). Focussing on whole-plant tissue allowed us to analyse a higher number of samples for this study, allowing larger numbers of sites and more replication.

2.3 Environmental variables

The modelled $\delta^{18}\text{O}$ signal in meteoric water (precipitation) (Bowen and Wilkinson, 2002) was obtained from <http://www.waterisotopes.org> (last access: 2 October 2017) as annual and monthly isotope ratio estimates at 10 arcmin resolution. These global estimates have shown to be highly accurate ($R^2 = 0.76$ for mean annual $\delta^{18}\text{O}$ in precipitation) and are based on absolute latitude and elevation and account for regional effects on atmospheric circulation patterns (for details see Bowen, 2010, 2017; IAEA/WMO, 2015). To test which temporal period of $\delta^{18}\text{O}$ values in precipitation showed the highest correlation with tissue $\delta^{18}\text{O}$ values, we calculated annual (January–December), growing season (May–October) and winter–spring (January–April) mean isotope ratio. We calculated both unweighted and weighted means against precipitation for each month. Monthly precipitation (PRECTOTCORR), land evapotranspiration (EVLAND) and surface air temperature (TLML) for each site and year of sampling (2013 or 2014) were retrieved from the NASA GESDISC data archive, land surface and flux diagnostics products (M2T1NXLND, M2TMNXFLX; resolution longitude 0.667°, latitude 0.5°; Global Modeling and Assimilation Office, 2015a, b). Total precipitation and evapotranspiration (ET), and mean temperature, from April to October were used as predictors in the statistical models. As ET can be compensated for by precipitation, we used the ET/P quotient as a predictor for the effect of water loss. A high value (> 1) indicates a net loss of water to the atmosphere. Site altitude was retrieved from a global database using the R package *elevatr* (ver 0.1–2, Hollister and Shah, 2017).

The distance from the moss surface to the water table (HWT) was measured using water wells (commonly a PVC pipe, 2–5 cm in diameter and slotted or perforated along the sides) with a “plumper” (a cylinder on a string that makes a “plump” sound when it hits the water surface) or a “bubbler” (a narrow tube that makes bubbles when it hits the water surface while the user blows into it). HWT was measured in the spring and in the autumn and there was a strong correlation between the two time points ($r = 0.74$). As growth mainly

Table 1. Sample sizes, standard variation and overall partitioning of measured variation for each species and response ($\delta^{13}\text{C}$ and $\delta^{18}\text{O}$). N_{site} is the number of sites and N_{obs} the total sample size. Standard deviation of the responses is given for within and between sites, together with the proportion of total variance measured between sites and within sites.

	Species	N_{site}	N_{obs}	Within site		Between sites	
				SD	Proportion of variance (%)	SD	Proportion of variance (%)
$\delta^{13}\text{C}$	<i>S. fuscum</i>	80	169	0.9	56	0.8	44
	<i>S. magellanicum</i>	83	168	1	51	0.98	49
$\delta^{18}\text{O}$	<i>S. fuscum</i>	80	168	0.7	13	1.83	87
	<i>S. magellanicum</i>	83	167	0.67	10	2	90

occurs in late summer to autumn in temperate and boreal regions, we used HWT at the end of the season as the proxy of relative HWT between sites.

2.4 Moss growth

Moss growth (or productivity, NPP) was measured with a modified version of the cranked wire method (see Clymo, 1970; Rydin and Jeglum, 2013 for details), with bristles from a paint brush spirally attached to a wire. These “brush wires” were inserted in the moss layer with the end of the wire protruding above the surface. Height increment (i.e. vertical growth) was measured over the growing season as the change in distance (to nearest millimetres) between the moss layer and the top of the wire. A minimum of three wires were inserted within a 1×1 m uniform area (same microhabitat, vegetation and general structure). To determine moss bulk density (kg m^{-3}), we dried (24 h at 60–65 °C) the top 30 mm of the stems (area 78 cm^2) in our collected core (see Sect. 2.1). Biomass growth on an area basis ($\text{g m}^{-2} \text{yr}^{-1}$) was calculated as height increment \times bulk density.

2.5 Statistical analyses

To test and quantify the influence of environmental variables and species identity on isotope composition, we used linear mixed models in R (R core team, 2016), employing the R package *lme4* ver 1.1–12 (Bates et al., 2015). Site dependence (i.e. multiple samples from the same site) was accounted for by adding site as a random factor. For tissue $\delta^{13}\text{C}$, we first fitted two separate models to test the independent effects of HWT, NPP and species identity (*S. fuscum* and *S. magellanicum*), and whether the HWT or NPP effect varied between species by fitting a species interaction term. To test the explanatory power of environmental variables (ET/P, precipitation, temperature, elevation) we first constructed a base model with HWT and NPP, as they were identified as the main predictors in literature. For simplicity we removed negligible interactions from this model. Each environmental variable and its interaction with species was then tested against the base model. For tissue $\delta^{18}\text{O}$, we first explored

which temporal period of modelled $\delta^{18}\text{O}_{\text{precip}}$ (annual, growing season, winter–spring) had the highest explanatory power and whether the relationship varied between species. The identified best model was then used as the base model to separately test each environmental variable (HWT, ET/P, precipitation, temperature) and its interaction with the species.

The proportion of variance explained by the predictors was calculated at the site level (Gelman and Hill, 2007) or as marginal R^2 (Nakagawa and Schielzeth, 2013; R package *piecewiseSEM* ver 1.1–4; Lefcheck, 2016). Although our study focused on explained variance by predictors, we also performed statistical tests of predictors and their interactions using type-2 (main effects tested after all the others in the model but without the interaction term) F tests, applying Kenward–Roger adjustments to the degrees of freedom, as implemented in the *car* package (ver. 2.1–3, Fox and Weisberg, 2011). Standard model checking was performed (e.g. residual analyses and distribution of random effects) to ensure compliance with model assumptions. Covariances between predictors were small ($r < 0.15$) or moderate ($r = 0.40$ – 0.50 between ET/P, precipitation and temperature) and this multicollinearity had minor impact on model estimates.

3 Results

Data collection from a geographically broad area resulted in large variation of isotope values and explanatory variables (Table S2). Due to uncertainty in height increment measurement we recorded a few negative values resulting in negative NPP. These values were kept in the analyses. The means and standard deviations (in parenthesis) of height increment (HI, millimetres) were 14.3 (10.1) for *S. fuscum* and 19.5 (14.1) for *S. magellanicum*, and the means and standard deviations of bulk density (BD, kg m^{-3}) were 17.8 (9.9) for *S. fuscum* and 10.2 (7.6) for *S. magellanicum*.

Table 2. Results from linear mixed models for $\delta^{13}\text{C}$ values. Statistical tests are based on type-2 F test using Kenward–Roger-adjusted degrees of freedom. The second model only included *S. magellanicum*. Elevation (m a.s.l.) and the three climatic variables (growing season sums and means: ET/P, P in millimetres, temperature in degrees Celcius) were tested one by one in the model including HWT (height above the water table in centimetres), species and NPP ($\text{g m}^{-2} \text{yr}^{-1}$). For simplicity, the negligible HWT \times NPP term was dropped from this model ($P = 0.36$). Estimated effects (\pm SEs) are only given for the main effects if interactions were considered negligible. These effects are slopes for continuous variables (all variables except species) and for species (categorical) the difference between *S. magellanicum* and *S. fuscum* (i.e. *S. fuscum* being the reference level). In the presence of an interaction between HWT and species, the species effect was estimated at mean HWT. R^2_{site} is explained between-site variance; R^2_{marginal} is explained total variance.

Variable	Effect	F	DF	P	N	R^2_{site}	R^2_{marginal}
HWT		26.8	1, 67	< 0.001	311		
Species	$-0.88 \pm 0.13^*$	43.0	1, 274	< 0.001			
HWT \times species	S. fus: -0.021 ± 0.008 S. mag: -0.045 ± 0.008	6.0	1, 235	0.01		0.32	0.18
HWT (<i>S. magellanicum</i>)	-0.04 ± 0.008	26.0	1, 134	< 0.001	158	0.33	0.17
NPP	0.0023 ± 0.0005	23.1	1, 309	< 0.001	318	0.12	0.07
Species	-0.38 ± 0.12	9.4	1, 266	< 0.01		0.01	0.01
NPP \times species	NS	0.7	1, 290	0.41			
HWT		25.5	1, 246	< 0.001	295		
Species	-0.62 ± 0.13 (HWT = 28 cm)	22.1	1, 269	< 0.001			
NPP	0.0022 ± 0.0005	22.4	1, 281	< 0.001		0.11	0.07
HWT \times species	S. fus: -0.012 ± 0.007 S. mag: -0.042 ± 0.007	10.6	1, 267	< 0.01		0.20	0.12
Elevation	0.00035 ± 0.0002	2.7	1, 81	0.11	295	0.03	0.01
Elevation \times species	NS	0.5	1, 233	0.47			
ET/P		0.2	1, 90	0.66	295		
(ET/P) \times species	S. fus: -0.33 ± 0.40 S. mag: 0.78 ± 0.44	5.0	1, 266	0.03		-0.02	0.01
P	-0.00013 ± 0.0006	0.0	1, 80	0.83	295	-0.01	0.00
P \times species	NS	1.2	1, 248	0.27			
T		0.0	1, 91	0.97	295		
T \times species	S. fus: -0.051 ± 0.034 S. mag: 0.087 ± 0.041	9.7	1, 273	< 0.01		-0.05	0.02

* The effect of *S. magellanicum* compared to *S. fuscum* at HWT 28 cm.

3.1 $\delta^{13}\text{C}$ signal

Variation in *Sphagnum* tissue $\delta^{13}\text{C}$ values was marginally greater within sites than between sites (Table 1). HWT predicted the $\delta^{13}\text{C}$ values, but the relationship differed between the two species (Table 2, Fig. 2). Although $\delta^{13}\text{C}$ values decreased with increasing HWT for both species, the slope was less steep for *S. fuscum* and this species had slightly higher $\delta^{13}\text{C}$ values overall. In separate models for the two species, HWT for *S. fuscum* had near-zero explanatory power, while for *S. magellanicum* HWT explained 33 % of the between-site variation and 17 % of the total variance (i.e. marginal R^2).

Measured $\delta^{13}\text{C}$ values were related to moss NPP and $\delta^{13}\text{C}$ values increased by 0.0023 ‰ (SE: 0.00048) for each milligram of biomass produced per square metres. NPP ex-

plained 11 % of the between-site variation in $\delta^{13}\text{C}$ and 7 % of the total variation. HWT and NPP explained 48 % of the between-site variation of $\delta^{13}\text{C}$ in *S. magellanicum* and 24 % of the total variation. Corresponding values for *S. fuscum* were 6 % and 7 %. Of the additional environmental variables tested, we found weak evidence that ET/P and temperature were positively correlated with $\delta^{13}\text{C}$ but only for *S. magellanicum* (Table 2).

3.2 $\delta^{18}\text{O}$ signal

Sphagnum tissue $\delta^{18}\text{O}$ values varied more between sites than within sites, and at similar magnitudes and proportions for both species (Table 1). Tissue $\delta^{18}\text{O}$ values were predicted by the spatially explicit estimates of $\delta^{18}\text{O}$ value isotope signature in precipitation (Fig. 3, Table 3). Annual mean $\delta^{18}\text{O}_{\text{precip}}$

Table 3. Results from linear mixed models for $\delta^{18}\text{O}$ values. Statistical tests are based on type-2 F test using Kenward–Roger-adjusted degrees of freedom. Three time periods for modelled $\delta^{18}\text{O}$ values (‰) in precipitation were tested individually: annual mean, growing season (April–September) and spring (January–April). The three climatic variables (growing season sums and mean: ET/P, P (mm), temp [°C]) were tested one by one in a model including HWT (cm) and mean annual $\delta^{18}\text{O}$ values). Estimated effects (\pm SEs) are only given for the main effects if interactions were considered negligible. These effects are slopes for continuous variables (all variables except species) and for species (categorical) the difference between *S. magellanicum* and *S. fuscum* (i.e. *S. fuscum* being the reference level). R^2_{site} is explained between-site variance; R^2_{marginal} is explained total variance.

Variable	Effect	F	DF	P	N	R^2_{site}	R^2_{marginal}
Annual precipitation $\delta^{18}\text{O}$	0.43 ± 0.035	148.4	1, 95	< 0.001	335	0.69	0.50
species	-0.83 ± 0.083	101.3	1, 250	< 0.001			0.05
Annual precipitation $\delta^{18}\text{O} \times$ species		1.9	1, 261	0.16			
Apr–Sep precipitation $\delta^{18}\text{O}$	0.49 ± 0.049	100.5	1, 94	< 0.001	335	0.58	0.42
species	-0.83 ± 0.083	99.4	1, 249	< 0.001			0.05
Apr–Sep precipitation $\delta^{18}\text{O} \times$ species		1.4	1, 256	0.24			
Jan–Apr precipitation $\delta^{18}\text{O}$	0.37 ± 0.027	187.2	1, 96	< 0.001	335	0.75	0.55
Species	-0.84 ± 0.083	102.3	1, 252	< 0.001			0.05
Jan–Apr precipitation $\delta^{18}\text{O} \times$ species		2.3	1, 265	0.13			
Annual precipitation $\delta^{18}\text{O}$	0.41 ± 0.038	111.9	1, 88	< 0.001	310	0.64	0.46
HWT	0.015 ± 0.005	10.4	1, 288	< 0.01		0.00	0.01
ET/P		0.1	1, 99	0.81	335		
(ET/P) \times species	<i>S. fus.</i> : -0.39 ± 0.48 <i>S. mag.</i> : 0.28 ± 0.50	3.5	1, 266	0.06		0.00	0.00
P	-0.0005 ± 0.0008	0.4	1, 99	0.54	335	0.00	0.00
$P \times$ species		0.8	1, 257	0.37			
Temp	-0.14 ± 0.051	7.4	1, 96	0.01	335	0.02	0.02
Temp \times species		1.6	1, 274	0.21			

explained 69 % of the variation in $\delta^{18}\text{O}_{\text{tissue}}$ between sites. This was similar to mean winter–spring (January–April) $\delta^{18}\text{O}_{\text{precip}}$ values (75 % explained) but higher than the growing season (April–September) $\delta^{18}\text{O}_{\text{precip}}$ (58 %). Using precipitation-weighted $\delta^{18}\text{O}_{\text{precip}}$ values resulted in lower percentages of explained variance for all three time periods (R^2_{site} : annual 52 %, January–April 65 %, April–September 52 %). *S. magellanicum* had consistently lower $\delta^{18}\text{O}$ values than *S. fuscum* (-0.83‰), but both species had a similar relationship between tissue $\delta^{18}\text{O}$ and $\delta^{18}\text{O}_{\text{precip}}$ (Fig. 3, Table 3).

HWT at the end of the growing season was, on average, 11 cm lower in *S. magellanicum* patches (wetter habitat) compared to *S. fuscum* (HWT = 33 cm) patches ($F_{1,224} = 131.9$, $P < 0.0001$). However, we found only very weak support for the hypothesis that HWT predicts tissue $\delta^{18}\text{O}$ values, as HWT explained < 1 % of the $\delta^{18}\text{O}$ variation (Table 2). There was negligible influence of the additional environmental variables on $\delta^{18}\text{O}$ values (Table 2). ET/P was associated with higher $\delta^{18}\text{O}$ values in *S. magellanicum* and lower in *S. fuscum* (but not different from the zero effect), while increasing temperature was weakly associated with overall lower $\delta^{18}\text{O}$ values.

4 Discussion

4.1 Stable carbon isotope discrimination in *Sphagnum*

Our data were consistent with the hypothesis that moss growing closer to the water table (low HWT) has reduced carbon isotope fractionation, leading to greater fixation of $^{13}\text{CO}_2$ and more ^{13}C -enriched tissue (Rice and Giles, 1996; Williams and Flanagan, 1996). Given that the water table position was measured in different places at different times and all are one-time measurements, this result is remarkably robust. For example refixation of ^{12}C -enriched substrate-derived CO_2 in living *Sphagna* (Turetsky and Wieder, 1999; Raghoebarsing et al., 2005) can potentially contribute to within-site variation in $\delta^{13}\text{C}$ as it potentially affects both the ambient concentration of CO_2 as well as its isotopic composition. Interestingly, the strength of the $\delta^{13}\text{C}$ – HWT relationship differed in the two species, with *S. magellanicum* exhibiting a greater reduction in $\delta^{13}\text{C}$ in response to drier conditions (high HWT) than *S. fuscum*. The weaker effect of HWT on $\delta^{13}\text{C}$ values in *S. fuscum* is likely a consequence of limited fluctuation in tissue water content, as this species is well known to store abundant water within capillary spaces

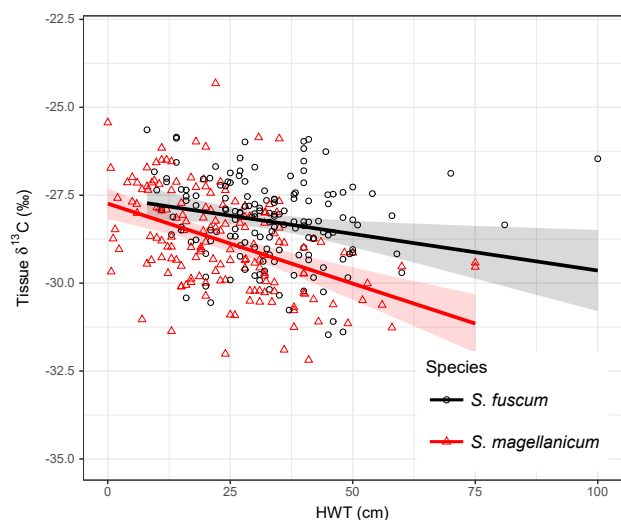


Figure 2. Relationship between height above the water table (HWT, measured at the end of the growing season) and $\delta^{13}\text{C}$ values in two *Sphagnum* species sampled across the Holarctic realm. Lines show the pooled regression line in a mixed-effect model. Shaded areas indicate approximate 95 % confidence intervals ($2 \times \text{SE}$) of the regression coefficients that do not include the uncertainty of the random effects. Equations: *S. fuscum*, $\delta^{13}\text{C} = -27.56 - 0.021 \times \text{HWT}$; *S. magellanicum*, $\delta^{13}\text{C} = -27.74 - 0.045 \times \text{HWT}$. $N_{\text{site}} = 83$, $N_{\text{total}} = 311$. See also Table 1.

and resist drying (Rydin, 1985), thus maintaining the water-film that results in reduced fractionation. Loader et al. (2016) reported a similar slope estimate for *S. magellanicum* in a single peatland, and several studies have confirmed the effects of contrasting microtopography (i.e. hummock – hollow differences) using multi-species comparisons (Price et al., 1997; Loisel et al., 2009; Markel et al., 2010). As such, our results suggest that species-specific differences in carbon isotope discrimination in *Sphagnum* are related to water retention capacity and, consequently, become more apparent under drier conditions. This supports the results of previous, smaller-scale studies (Rice, 2000).

The influence of species identity on the relationship between $\delta^{13}\text{C}$ values and water table position has important implications for palaeoenvironmental reconstructions based on $\delta^{13}\text{C}$ values. The relationship between $\delta^{13}\text{C}$ and HWT has been used in palaeoecological reconstructions of surface wetness (e.g. Loisel et al., 2009). In our data set the strength of the relationship was weaker than previously reported. For instance, Loader et al. (2016) reported $R^2 = 54\%$ for *S. magellanicum* in a single site. Given the characteristics of our data (large-scale, circumpolar), the explanatory power ($R^2_{\text{marginal}} = 17\%$) can be considered acceptable and comparable to other proxies such as testate amoebae (16% in Loader et al., 2016; Sullivan and Booth, 2011). Our results imply that isotopic signals of peatland wetness in hummock-dwelling species (such as *S. fuscum*) may be weaker or ab-

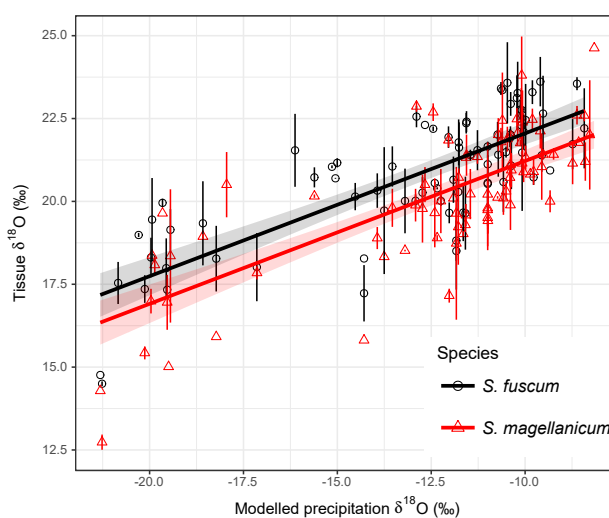


Figure 3. Association between modelled annual mean $\delta^{18}\text{O}_{\text{precip}}$ values and $\delta^{18}\text{O}$ values in two *Sphagnum* species. Data show site means for each species and error bars represent the standard deviation (at some sites only one sample of a species was taken). Regression lines with different intercepts ($P < 0.001$, Table 2) illustrate the relationship between modelled $\delta^{18}\text{O}_{\text{precip}}$ and *Sphagnum* $\delta^{18}\text{O}$. Equations: *S. fuscum*, $26.36 + 0.43 \times \delta^{18}\text{O}_{\text{precip}}$ ($n = 1-2$, $N_{\text{site}} = 80$); *S. magellanicum*, $25.53 + 0.43 \times \delta^{18}\text{O}_{\text{precip}}$ ($n = 1-2$, $N_{\text{site}} = 83$). Shaded areas indicate approximate 95 % confidence intervals ($2 \times \text{SE}$) of the regression coefficients that do not include the uncertainty of the random effects.

sent compared to lawn species. It is therefore important that the same species or species type (e.g. lawn species as they likely have a broad HWT niche) is used if $\delta^{13}\text{C}$ values are employed as a proxy to infer changes in HWT.

We also identified evidence that evapotranspiration (ET) and NPP modify $\delta^{13}\text{C}$ values, although the effect of ET was weak and restricted to *S. magellanicum*. We expected a stronger relationship, as ET and temperature control $\delta^{13}\text{C}$ by increasing water loss at the moss surface and reducing the diffusive resistance (i.e. reducing CO_2 limitation), enabling increased discrimination against ^{13}C (Williams and Flanagan, 1996). NPP only explained a small proportion of the variation in $\delta^{13}\text{C}$ values, but the relationship was apparent across species. Several studies have proposed the use of $\delta^{13}\text{C}$ values to infer *Sphagnum* productivity (e.g. Rice and Giles, 1996; Rice, 2000; Munir et al., 2017) and our study is the first to test this at the pan-Holarctic scale. Deane-Coe et al. (2015) investigated $\delta^{13}\text{C}$ values across moss species (including *Sphagnum*) and years at one site and found a weak relationship between productivity and $\delta^{13}\text{C}$ values ($R^2 = 0.10$ and 0.31). Similarly, Rice (2000) reported that the relative growth rate explained about 25 % of the variation in ^{13}C discrimination. We did not find as strong a relationship ($R^2 < 0.12$), but our study was geographically broader and less controlled; consequently, our results were likely influ-

enced by more complex interactions among environmental factors that affect *Sphagnum* growth across our sites. Nevertheless, our results indicate independent effects of evaporation and productivity on $\delta^{13}\text{C}$ values. The lack of a strong NPP pattern somewhat limits the ability to infer productivity of *Sphagnum* in palaeoecological studies.

4.2 Global patterns of $\delta^{18}\text{O}$ values in *Sphagnum*

Modelled $\delta^{18}\text{O}$ values in precipitation (Bowen, 2010) explained much of the variation in $\delta^{18}\text{O}_{\text{tissue}}$ values between sites ($R^2 = 68\%$ for annual mean $\delta^{18}\text{O}_{\text{precip}}$). The percent variance explained was even higher if the spring period for modelled $^{18}\text{O}_{\text{precip}}$ was used but was lower for the growing season average. This result does not necessarily mean that spring season water was utilized by the plants during the growing season. Between-site variation in $^{18}\text{O}_{\text{precip}}$ values are much larger in the winter (Fig. S1), more effectively discriminating maritime and continental regions (Bowen, 2010). The better fit may simply be an effect of a more distinct separation of $^{18}\text{O}_{\text{precip}}$ in the winter data. Although the $\delta^{18}\text{O}_{\text{tissue}} - ^{18}\text{O}_{\text{precip}}$ relationship presented here is robust, a few $\delta^{18}\text{O}$ values are less well predicted by the regression model and they originate from Northwest Territories (Canada) and West Siberia (Russia). Likely, this suggests that the $^{18}\text{O}_{\text{precip}}$ model is less accurate in these interior regions with fewer precipitation collection stations.

In contrast, the data did not support a negative correlation between precipitation amount and $\delta^{18}\text{O}_{\text{tissue}}$ values and $\delta^{18}\text{O}_{\text{tissue}}$ values were only weakly affected by predictors associated with water loss (ET/P and/or temperature) and species identity. The indication of ^{18}O enrichment in *S. magellanicum* due to ET/P was expected as the lighter isotope ^{16}O needs less energy to vaporize. However, the opposite trend was suggested for *S. fuscum*, and surprisingly, higher surface temperatures decreased ^{18}O enrichment. Hence we conclude that climatic variables associated with water loss were weak predictors after controlling for $\delta^{18}\text{O}_{\text{precip}}$ values. This result may not be too unexpected as laboratory experiments have so far failed to relate ^{18}O enrichment in *Sphagnum* to differences in evaporation rates (Brader et al., 2010).

There have been few regional studies on moss $\delta^{18}\text{O}_{\text{tissue}}$ values that span gradients of $\delta^{18}\text{O}_{\text{precip}}$ values (Royles et al., 2016; Skrzypek et al., 2010) and most interpretations of moss $\delta^{18}\text{O}_{\text{tissue}}$ – climate relationships come from peat core studies (e.g. van der Knaap et al., 2011). In Antarctic non-*Sphagnum* peat banks variation in $\delta^{18}\text{O}_{\text{cellulose}}$ values tracked $\delta^{18}\text{O}$ values in moss water across a latitudinal gradient (61–65° S) despite a lack of difference in $\delta^{18}\text{O}_{\text{precip}}$. This result led Royles et al. (2016) to suggest that moss water and tissue $\delta^{18}\text{O}$ values are better temporal integrators of source water than point rainfall measurements. The authors interpreted site-to-site differences as relating to differential evaporative enrichment and other physio-chemical factors that affect ^{18}O exchange, fixation and biochemical synthesis. Skrzypek et

al. (2010) explored variation in *Sphagnum* $\delta^{18}\text{O}_{\text{tissue}}$ values across a regional altitudinal gradient and found no consistent trend or significant relationship linking $\delta^{18}\text{O}_{\text{tissue}}$ values to altitude, where $\delta^{18}\text{O}$ in source water is expected to differ. Although fractionation in source water caused by adiabatic cooling with altitude should lead to altitudinal effects, differences in precipitation amount can confound this pattern (Gat et al., 2000). Unfortunately, there are limited regional studies that have tested the effects of variation in source water on $\delta^{18}\text{O}_{\text{tissue}}$ values. The present study provides a much greater range of geographical and environmental variation and shows strong support for *Sphagnum* strongly tracking source water.

Interestingly, the relationship between $\delta^{18}\text{O}_{\text{tissue}}$ and $\delta^{18}\text{O}_{\text{precip}}$ values detected here is very similar to that proposed some time ago by Epstein et al. (1977); $\delta^{18}\text{O}_{\text{cellulose}} = 27.33 + 0.33 \times \delta^{18}\text{O}_{\text{precip}}$ (note that Jones et al., 2014, show high correspondence between $\delta^{18}\text{O}_{\text{cellulose}}$ and $\delta^{18}\text{O}_{\text{tissue}}$ values). However, our data suggest a slightly steeper slope and lower intercept, particularly for *S. magellanicum*. The species effect on $\delta^{18}\text{O}$ suggests a difference in the degree of evaporation from the plant surface prior to the uptake of water. The lower $\delta^{18}\text{O}$ values for *S. magellanicum* compared to *S. fuscum* (-0.83%) is comparable to the results from bogs in Canada for the same species (-2.2% , Aravena and Warner, 1992) and between a hollow and a hummock species in the Netherlands (-2% , Brenninkmeijer et al., 1982). This suggests that the absorbed water in *S. magellanicum* was subject to less evaporation. In *Sphagnum* plants, surface water is largely affected by capillarity, water storage and reducing conductance with compact morphology. Plant traits that enhance these functions are more pronounced in species and individuals found at high HWT as these characteristics maintain high tissue water content (Hayward and Clymo, 1982; Laing et al., 2014; Waddington et al., 2015). Consequently, during droughts, *Sphagnum* species growing close to the water table will dry out quickly as the evaporative demand cannot be balanced, and simultaneously photosynthesis is shut down. *Sphagnum* species higher above the water table wick water from below and store water effectively, thereby remaining photosynthetically active while water is lost due to evaporation. This mechanism would result in ^{18}O enrichment being higher above the water table (Brenninkmeijer et al., 1982; Aravena and Warner, 1992) and explains the positive relationship between HWT and $\delta^{18}\text{O}$ in *S. magellanicum* reported by Loader et al. (2016) along a 10 m transect. We found a weak positive relationship of $\delta^{18}\text{O}$ with HWT, which suggests that HWT cannot entirely explain species-specific differences in ^{18}O enrichment. Instead, this can be attributed to lower water retention (i.e. higher evaporation at the same water deficit) in *S. magellanicum* compared to *S. fuscum* (Clymo, 1973; McCarter and Price, 2014). Although species differences in ^{18}O have been reported (Aravena and Warner, 1992; Zanazzi and Mora, 2005; Bilali et al., 2013), our study suggests that the species-specific $\delta^{18}\text{O}$ signals may not simply be a consequence of growing at different HWT

but can rather reflect distinct water retention capacity in these species.

The strong influence of $\delta^{18}\text{O}_{\text{precip}}$ values and, to a much lesser extent, environmental variables related to water loss, combined with a relatively small within-site variation in $\delta^{18}\text{O}_{\text{tissue}}$ values, suggest that macroclimatic drivers, such as precipitation inputs, largely determine the $\delta^{18}\text{O}$ value of peatland moss tissue. These results are promising for the use of oxygen isotopes in large-scale palaeoecological reconstructions from peat cores (Ellis and Rochefort, 2006; Chambers et al., 2012; Daley et al., 2010), although a better understanding of O isotope fractionation within tissue components and their decay relationships would improve their utility. Moreover, the simple relationships presented here can potentially be utilized to trace changes in $\delta^{18}\text{O}_{\text{precip}}$ values that mirror climate variability.

5 Conclusions

Our study provides new insights into large-scale variation in *Sphagnum* tissue isotopic signature and suggests that isotopic composition can be used for climatic reconstructions. We show a close link between precipitation and tissue $\delta^{18}\text{O}$ values and conclude that variation in $\delta^{18}\text{O}$ values are mainly driven by the macroclimate, but species differences exist. In contrast, $\delta^{13}\text{C}$ values were strongly related to local microtopography, while the influence of macroclimate was negligible. As suggested in earlier studies, $\delta^{13}\text{C}$ values were also weakly associated with NPP. These conclusions were most strongly supported for the cosmopolitan *S. magellanicum* complex and species identity should be accounted for in future carbon isotope studies to avoid spurious conclusions.

Code and data availability. Data and R-script used to reproduce results are available on Figshare, <https://doi.org/10.6084/m9.figshare.6969497> (Granath et al., 2018).

The Supplement related to this article is available online at <https://doi.org/10.5194/bg-15-5189-2018-supplement>.

Author contributions. SKR, GG and HR initiated the study and formulated the research objectives. All authors were involved in data collection and SKR, NB, KP, AV and DPG performed the isotope analyses. GG performed the statistical analyses and wrote the first draft with input from SKR and HR. All authors read and commented on the manuscript and approved the final version.

Competing interests. The authors declare that they have no conflict of interest.

Acknowledgements. To the memory of coauthor and *Sphagnum* enthusiast Maria Noskova, who passed away tragically before this paper was finished. We thank Union College and the US National Science Foundation for providing funding for Union isotope ratio mass spectrometer and peripherals (NSF-MRI #1229258) and Sarah Katz for laboratory assistance. The project was supported by the Swedish Research Council (2015-05174), the Russian Science Foundation (grant 14-14-00891), the Russian Foundation for Basic Research (research projects nos. 14-05-00775, 15-44-00091 and 16-55-16007), University of Ferrara (FAR 2013 and 2014), the Polish National Centre for Research and Development (within the Polish-Norwegian Research Programme: the project WETMAN (Central European Wetland Ecosystem Feedbacks to Changing Climate Field Scale Manipulation) Project ID: 203258), the National Science Centre, Poland (ID: 2015/17/B/ST10/01656), institutional research funds from the Estonian Ministry of Education and Research (grant IUT34-7), the Natural Sciences and Engineering Research Council of Canada Discovery Grants program awarded to Jennifer L. Baltzer, an NSERC Strategic Grant, and with generous support awarded to Lorna I. Harris from the W. Garfield Weston Foundation Fellowship for Northern Conservation, administered by Wildlife Conservation Society (WCS) Canada, and National Science Foundation (NSF-1312402) to Susan M. Natali. We acknowledge the Adirondack and Maine offices of The Nature Conservancy, the Autonomous Province of Bolzano (Italy), Staatsbosbeheer and Landschap Overijssel (the Netherlands), the Greenwoods Conservancy, NY and the University of Maine for access to field sites.

Edited by: Marcel van der Meer

Reviewed by: Julie Loiesel and one anonymous referee

References

- Aravena, R. and Warner, B. G.: Oxygen-18 composition of *Sphagnum*, and microenvironmental water relations, *Bryologist*, 95, 445–448, 1992.
- Bates, D., Mächler, M., Bolker, B., and Walker, S.: Fitting Linear Mixed-Effects Models Using lme4, *J. Stat. Softw.*, 67, <https://doi.org/10.18637/jss.v067.i01>, 2015.
- Bilali, H. E., Patterson, R. T., and Prokoph, A.: A Holocene paleoclimate reconstruction for eastern Canada based on $\delta^{18}\text{O}$ cellulose of *Sphagnum* mosses from Mer Bleue Bog, Holocene, 23, 1260–1271, <https://doi.org/10.1177/0959683613484617>, 2013.
- Bowen, G. J.: Isoscapes: spatial pattern in isotopic biogeochemistry, *Annu. Rev. Earth Pl. Sc.*, 38, 161–187, <https://doi.org/10.1146/annurev-earth-040809-152429>, 2010.
- Bowen, G. J.: Gridded maps of the isotopic composition of meteoric waters, available at: <http://www.waterisotopes.org> (last access: 17 September 2017), 2017.
- Bowen, G. J. and Wilkinson, B.: Spatial distribution of $\delta^{18}\text{O}$ in meteoric precipitation, *Geology*, 30, 315–318, [https://doi.org/10.1130/0091-7613\(2002\)030<0315:SDOIM>2.0.CO;2](https://doi.org/10.1130/0091-7613(2002)030<0315:SDOIM>2.0.CO;2), 2002.
- Brader, A. V., van Winden, J. F., Bohncke, S. J. P., Beets, C. J., Reichart, G.-J., and de Leeuw, J. W.: Fractionation of hydrogen, oxygen and carbon isotopes in n-alkanes and cellulose

- of three *Sphagnum* species, *Org. Geochem.*, 41, 1277–1284, <https://doi.org/10.1016/j.orggeochem.2010.09.006>, 2010.
- Brenninkmeijer, C. A. M., van Geel, B., and Mook, W. G.: Variations in the D/H and $^{18}\text{O}/^{16}\text{O}$ ratios in cellulose extracted from a peat bog core, *Earth Planet. Sc. Lett.*, 61, 283–290, [https://doi.org/10.1016/0012-821X\(82\)90059-0](https://doi.org/10.1016/0012-821X(82)90059-0), 1982.
- Chambers, F. M., Booth, R. K., De Vleeschouwer, F., Lamentowicz, M., Le Roux, G., Mauquoy, D., Nichols, J. E., and van Geel, B.: Development and refinement of proxy-climate indicators from peats, *Quaternary Int.*, 268, 21–33, <https://doi.org/10.1016/j.quaint.2011.04.039>, 2012.
- Clymo, R. S.: The growth of *Sphagnum*?: Methods of measurement, *J. Ecol.*, 58, 13–49, 1970.
- Clymo, R. S.: The growth of *Sphagnum*?: Some effects of environment, *J. Ecol.*, 61, 849–869, 1973.
- Daley, T. J., Barber, K. E., Street-Perrott, F. A., Loader, N. J., Marshall, J. D., Crowley, S. F., and Fisher, E. H.: Holocene climate variability revealed by oxygen isotope analysis of *Sphagnum* cellulose from Walton Moss, northern England, *Quaternary Sci. Rev.*, 29, 1590–1601, <https://doi.org/10.1016/j.quascirev.2009.09.017>, 2010.
- Dawson, T. E., Mambelli, S., Plamboeck, A. H., Templer, P. H. and Tu, K. P.: Stable isotopes in plant ecology, *Annu. Rev. Ecol. Syst.*, 33, 507–559, <https://doi.org/10.1146/annurev.ecolsys.33.020602.095451>, 2002.
- Deane-Coe, K. K., Mauritz, M., Celis, G., Salmon, V., Crummer, K. G., Natali, S. M., and Schuur, E. A. G.: Experimental warming alters productivity and isotopic signatures of tundra mosses, *Ecosystems*, 18, 1070–1082, <https://doi.org/10.1007/s10021-015-9884-7>, 2015.
- Ellis, C. J. and Rochefort, L.: Long-term sensitivity of a High Arctic wetland to Holocene climate change, *J. Ecol.*, 94, 441–454, <https://doi.org/10.1111/j.1365-2745.2005.01085.x>, 2006.
- Epstein, S., Thompson, P., and Yapp, C. J.: Oxygen and hydrogen isotopic ratios in plant cellulose, *Science*, 198, 1209–1215, <https://doi.org/10.1126/science.198.4323.1209>, 1977.
- Farquhar, G. D., Ehleringer, J. R., and Hubick, K. T.: Carbon isotope discrimination and photosynthesis, *Annu. Rev. Plant Phys.*, 40, 503–537, <https://doi.org/10.1146/annurev.pp.40.060189.002443>, 1989.
- Finsinger, W., Schoning, K., Hicks, S., Lücke, A., Goslar, T., Wagner-cremer, F., and Hyyppä, H.: Climate change during the past 1000 years: a high-temporal-resolution multiproxy record from a mire in northern Finland, *J. Quaternary Sci.*, 28, 152–164, <https://doi.org/10.1002/jqs.2598>, 2013.
- Flatberg, K. I.: *Norges torvmoser*, Akad. Forl, Oslo, 2013.
- Fox, J. and Weisberg, S.: *An R companion to applied regression*, 2nd Edn., SAGE Publications, Thousand Oaks, Calif., 2011.
- Gat, J. R., Mook, W. G., and Meijer Harro, A. J.: Observed isotope effects in precipitation. *Environmental Isotopes in the Hydrological Cycle: Principles and Applications*, International Atomic Energy Agency and United Nations Educational, Scientific and Cultural Organization, 2, 197–207, 2000.
- Gelman, A. and Hill, J.: *Data analysis using regression and multilevel/hierarchical models*, Cambridge University Press, Cambridge, New York, 2007.
- Gessler, A., Ferrio, J. P., Hommel, R., Treydte, K., Werner, R. A., and Monson, R. K.: Stable isotopes in tree rings: towards a mechanistic understanding of isotope fractionation and mixing processes from the leaves to the wood, *Tree Physiol.*, 34, 796–818, <https://doi.org/10.1093/treephys/tpu040>, 2014.
- Global Modeling and Assimilation Office (GMAO): MERRA2 tavg1_2d_flux_Nx: 2d,1-Hourly,Time-Averaged,Single-Level,Assimilation,Surface Flux Diagnostics V5.12.4, NASA Goddard Earth Sciences Data and Information Services Center, Greenbelt, MD, USA, 2015a.
- Global Modeling and Assimilation Office (GMAO): MERRA2 tavg1_2d_lnd_Nx: 2d,1-Hourly,Time-Averaged,Single-Level,Assimilation,Land Surface Diagnostics V5.12.4, NASA Goddard Earth Sciences Data and Information Services Center, Greenbelt, MD, USA, 2015b.
- Granath, G., Rydin, H., Baltzer, J. L., Bengtsson, F., Boncek, N., Bragazza, L., Bu, Z.-J., Caporn, S. J. M., Dorrepaal, E., Galanina, O., Gałka, M., Ganeva, A., Gillikin, D. P., Goia, I., Goncharova, N., Hájek, M., Haraguchi, A., Harris, L. I., Humphreys, E., Jiroušek, M., Kajukalo, K., Karofeld, E., Koronátová, N. G., Kosykh, N. P., Lamentowicz, M., Lapshina, E., Limpens, J., Linkosalmi, M., Ma, J.-Z., Mauritz, M., Munir, T. M., Natali, S., Natcheva, R., Noskova, M., Payne, R. J., Pilkington, K., Robinson, S., Robroek, B. J. M., Rochefort, L., Singer, D., Stenøien, H. K., Tuittila, E.-S., Vellak, K., Verheyden, A., Waddington, J. M., and Rice, S. K.: Data from: Environmental and taxonomic controls of carbon and oxygen stable isotope composition in *Sphagnum* across broad climatic and geographic ranges, <https://doi.org/10.6084/m9.figshare.6969497>, 2018.
- Hassel, K., Kyrkjeide, M. O., Yousefi, N., Prestø, T., Stenøien, H. K., Shaw, A. J., and Flatberg, K. I.: *Sphagnum divinum* (sp. nov.) and *S. medium* Limpr. and their relationship to *S. magellanicum* Brid., *J. Bryol.*, 40, 197–222, <https://doi.org/10.1080/03736687.2018.1474424>, 2018.
- Hayward, P. M. and Clymo, R. S.: Profiles of water content and pore size in *Sphagnum* and peat, and their relation to peat bog ecology, *P. Roy. Soc. Lond. B Bio.*, 215, 299–325, 1982.
- Hollister, J. W. and Shah, T.: Elevatr: Access elevation data from various APIs, CRAN, version 0.1.4, available at: <https://CRAN.R-project.org/package=elevatr> (last access: 28 August 2018), 2017.
- Hunsinger, G. B., Hagopian, W. M., and Jahren, A. H.: Off-line oxygen isotope analysis of organic compounds with high N:O, *Rapid Commun. Mass Sp.*, 24, 3182–3186, <https://doi.org/10.1002/rcm.4752>, 2010.
- IAEA/WMO: *Global Network of Isotopes in Precipitation*, The GNIP Database, 2015.
- Jones, M. C., Wooller, M., and Peteet, D. M.: A deglacial and Holocene record of climate variability in south-central Alaska from stable oxygen isotopes and plant macrofossils in peat, *Quaternary Sci. Rev.*, 87, 1–11, <https://doi.org/10.1016/j.quascirev.2013.12.025>, 2014.
- Kaislahti Tillman, P., Holzkämper, S., Kuhry, P., Sannel, A. B. K., Loader, N. J., and Robertson, I.: Stable carbon and oxygen isotopes in *Sphagnum fuscum* peat from subarctic Canada: Implications for palaeoclimate studies, *Chem. Geol.*, 270, 216–226, <https://doi.org/10.1016/j.chemgeo.2009.12.001>, 2010.
- Kaislahti Tillman, P., Holzkämper, S., Andersen, T. J., Hugelius, G., Kuhry, P., and Oksanen, P.: Stable isotopes in *Sphagnum fuscum* peat as late-Holocene climate proxies in

- northeastern European Russia, Holocene, 23, 1381–1390, <https://doi.org/10.1177/0959683613489580>, 2013.
- Kyrkjeeide, M. O., Hassel, K., Stenøien, H. K., Prestø, T., Boström, E., Shaw, A. J., and Flatberg, K. I.: The dark morph of *Sphagnum fuscum* (Schimp.) H.Klinggr. in Europe is conspecific with the North American *S. beothuk*, *J. Bryol.*, 37, 251–266, <https://doi.org/10.1179/1743282015Y.0000000020>, 2015.
- Kyrkjeeide, M. O., Hassel, K., Flatberg, K. I., Shaw, A. J., Yousefi, N., and Stenøien, H. K.: Spatial genetic structure of the abundant and widespread peatmoss *Sphagnum magellanicum* Brid., *PLOS ONE*, 11, e0148447, <https://doi.org/10.1371/journal.pone.0148447>, 2016.
- Laing, C. G., Granath, G., Belyea, L. R., Allton, K. E., and Rydin, H.: Tradeoffs and scaling of functional traits in *Sphagnum* as drivers of carbon cycling in peatlands, *Oikos*, 123, 817–828, <https://doi.org/10.1111/oik.01061>, 2014.
- Lamentowicz, M., Gałka, M., Lamentowicz, Ł., Obremaska, M., Köhl, N., Lücke, A., and Jassey, V. E. J.: Reconstructing climate change and ombrotrophic bog development during the last 4000 years in northern Poland using biotic proxies, stable isotopes and trait-based approach, *Palaeogeogr. Palaeoclimatol.*, 418, 261–277, <https://doi.org/10.1016/j.palaeo.2014.11.015>, 2015.
- Lefcheck, J. S.: piecewiseSEM: Piecewise structural equation modelling in R for ecology, evolution, and systematics, *Methods Ecol. Evol.*, 7, 573–579, <https://doi.org/10.1111/2041-210X.12512>, 2016.
- Limpens, J., Robroek, B. J. M., Heijmans, M. M. P. D., and Tomassen, H. B. M.: Mixing ratio and species affect the use of substrate-derived CO₂ by *Sphagnum*, *J. Veg. Sci.*, 19, 841–848, <https://doi.org/10.3170/2008-8-18456>, 2008.
- Loader, N. J., McCarroll, D., van der Knaap, W. O., Robertson, I., and Gagen, M.: Characterizing carbon isotopic variability in *Sphagnum*, *Holocene*, 17, 403–410, 2007.
- Loader, N. J., Street-Perrott, F. A., Mauquoy, D., Roland, T. P., van Bellen, S., Daley, T. J., Davies, D., Hughes, P. D. M., Pancotto, V. O., Young, G. H. F., Amesbury, M. J., Charman, D. J., Mallon, G., and Yu, Z. C.: Measurements of hydrogen, oxygen and carbon isotope variability in *Sphagnum* moss along a microtopographical gradient in a southern Patagonian peatland, *J. Quaternary Sci.*, 31, 426–435, <https://doi.org/10.1002/jqs.2871>, 2016.
- Loisel, J., Garneau, M., and Hélie, J.-F.: Modern *Sphagnum* $\delta^{13}\text{C}$ signatures follow a surface moisture gradient in two boreal peat bogs, James Bay lowlands, Québec, *J. Quaternary Sci.*, 24, 209–214, <https://doi.org/10.1002/jqs.1221>, 2009.
- Loisel, J., Yu, Z., Beilman, D. W., Camill, P., Alm, J., Amesbury, M. J., Anderson, D., Andersson, S., Bochicchio, C., Barber, K., Belyea, L. R., Bunbury, J., Chambers, F. M., Charman, D. J., De Vleeschouwer, F., Fia kiewicz-Kozie, B., Finkelstein, S. A., Gaka, M., Garneau, M., Hammarlund, D., Hinchcliffe, W., Holmquist, J., Hughes, P., Jones, M. C., Klein, E. S., Kokfelt, U., Korhola, A., Kuhry, P., Lamarre, A., Lamentowicz, M., Large, D., Lavoie, M., MacDonald, G., Magnan, G., Makila, M., Mallon, G., Mathijssen, P., Mauquoy, D., McCarroll, J., Moore, T. R., Nichols, J., O'Reilly, B., Oksanen, P., Packalen, M., Peeteet, D., Richard, P. J., Robinson, S., Ronkainen, T., Rundgren, M., Sannel, A. B. K., Tarnocai, C., Thom, T., Tuittila, E.-S., Turetsky, M., Valiranta, M., van der Linden, M., van Geel, B., van Bellen, S., Vitt, D., Zhao, Y., and Zhou, W.: A database and synthesis of northern peatland soil properties and Holocene carbon and nitrogen accumulation, *Holocene*, 24, 1028–1042, <https://doi.org/10.1177/0959683614538073>, 2014.
- Markel, E. R., Booth, R. K., and Qin, Y.: Testate amoebae and $\delta^{13}\text{C}$ of *Sphagnum* as surface-moisture proxies in Alaskan peatlands, *Holocene*, 20, 463–475, <https://doi.org/10.1177/0959683609354303>, 2010.
- McCarter, C. P. R. and Price, J. S.: Ecohydrology of *Sphagnum* moss hummocks: mechanisms of capitula water supply and simulated effects of evaporation, *Ecohydrology*, 7, 33–44, <https://doi.org/10.1002/eco.1313>, 2014.
- Ménot, G. and Burns, S. J.: Carbon isotopes in ombrogenic peat bog plants as climatic indicators: calibration from an altitudinal transect in Switzerland, *Org. Geochem.*, 32, 233–245, [https://doi.org/10.1016/S0146-6380\(00\)00170-4](https://doi.org/10.1016/S0146-6380(00)00170-4), 2001.
- Menot-Combes, G., Combes, P.-P., and Burns, S. J.: Climatic information from $\delta^{13}\text{C}$ in plants by combining statistical and mechanistic approaches, *Holocene*, 14, 931–939, <https://doi.org/10.1191/0959683604hl771rp>, 2004.
- Moschen, R., Köhl, N., Rehberger, I., and Lücke, A.: Stable carbon and oxygen isotopes in sub-fossil *Sphagnum*: Assessment of their applicability for palaeoclimatology, *Chem. Geol.*, 259, 262–272, <https://doi.org/10.1016/j.chemgeo.2008.11.009>, 2009.
- Munir, T. M., Khadka, B., Xu, B., and Strack, M.: Mineral nitrogen and phosphorus pools affected by water table lowering and warming in a boreal forested peatland, *Ecohydrology*, 10, e1893, <https://doi.org/10.1002/eco.1893>, 2017.
- Nakagawa, S. and Schielzeth, H.: A general and simple method for obtaining R² from generalized linear mixed-effects models, *Methods Ecol. Evol.*, 4, 133–142, <https://doi.org/10.1111/j.2041-210x.2012.00261.x>, 2013.
- O'Leary, M. H.: Carbon isotopes in photosynthesis, *Bioscience*, 38, 328–336, 1988.
- Price, G. D., McKenzie, J. E., Pilcher, J. R., and Hoper, S. T.: Carbon-isotope variation in *Sphagnum* from hummock-hollow complexes: implications for Holocene climate reconstruction, *Holocene*, 7, 229–233, <https://doi.org/10.1177/095968369700700211>, 1997.
- Raghoebarsing, A. A., Smolders, A. J. P., Schmid, M. C., Rijpstra, W. I. C., Wolters-Arts, M., Derksen, J., Jetten, M. S. M., Schouten, S., Damste, J. S. S., Lamers, L. P. M., Roelofs, J. G. M., den Camp, H., and Strous, M.: Methanotrophic symbionts provide carbon for photosynthesis in peat bogs, *Nature*, 436, 1153–1156, 2005.
- R core team: R: a language and environment for statistical computing, R Foundation for Statistical Computing, Vienna, Austria, available at: <https://www.R-project.org> (last access: 28 August 2018), 2016.
- Rice, S. K.: Variation in carbon isotope discrimination within and among *Sphagnum* species in a temperate wetland, *Oecologia*, 123, 1–8, 2000.
- Rice, S. K. and Giles, L.: The influence of water content and leaf anatomy on carbon isotope discrimination and photosynthesis in *Sphagnum*, *Plant Cell Environ.*, 19, 118–124, 1996.
- Royles, J., Sime, L. C., Hodgson, D. A., Convey, P., and Griffiths, H.: Differing source water inputs, moderated by evaporative enrichment, determine the contrasting $\delta^{18}\text{O}_{\text{CELLULOSE}}$ signals in maritime Antarctic moss peat banks, *J. Geophys. Res.-Biogeol.*, 118, 184–194, <https://doi.org/10.1002/jgrg.20021>, 2013.

- Royles, J., Horwath, A. B., and Griffiths, H.: Interpreting bryophyte stable carbon isotope composition: Plants as temporal and spatial climate recorders, *Geochim. Geophys. Geosci.*, 15, 1462–1475, <https://doi.org/10.1002/2013GC005169>, 2014.
- Royles, J., Amesbury, M. J., Roland, T. P., Jones, G. D., Convey, P., Griffiths, H., Hodgson, D. A., and Charman, D. J.: Moss stable isotopes (carbon-13, oxygen-18) and testate amoebae reflect environmental inputs and microclimate along a latitudinal gradient on the Antarctic Peninsula, *Oecologia*, 181, 931–945, <https://doi.org/10.1007/s00442-016-3608-3>, 2016.
- Rydin, H.: Effect of water level on desiccation of *Sphagnum* in relation to surrounding Sphagna, *Oikos*, 45, 374–379, 1985.
- Rydin, H. and Jeglum, J. K.: *The Biology of Peatlands*, 2nd Edn., Oxford University Press Inc., New York, 2013.
- Skrzypek, G., Jezierski, P., and Szyrkiewicz, A.: Preservation of primary stable isotope signatures of peat-forming plants during early decomposition – observation along an altitudinal transect, *Chem. Geol.*, 273, 238–249, <https://doi.org/10.1016/j.chemgeo.2010.02.025>, 2010.
- Skrzypek, G., Kałużny, A., and Jędrysek, M. O.: Carbon stable isotope analyses of mosses – Comparisons of bulk organic matter and extracted nitrocellulose, *J. Am. Soc. Mass Spectr.*, 18, 1453–1458, <https://doi.org/10.1016/j.jasms.2007.04.020>, 2007a.
- Skrzypek, G., Kałużny, A., Wojtuń, B., and Jędrysek, M.-O.: The carbon stable isotopic composition of mosses: A record of temperature variation, *Org. Geochem.*, 38, 1770–1781, <https://doi.org/10.1016/j.orggeochem.2007.05.002>, 2007b.
- Sternberg, L., Pinzon, M. C., Anderson, W. T., and Jahren, A. H.: Variation in oxygen isotope fractionation during cellulose synthesis: intramolecular and biosynthetic effects, *Plant Cell Environ.*, 29, 1881–1889, <https://doi.org/10.1111/j.1365-3040.2006.01564.x>, 2006.
- Sullivan, M. E. and Booth, R. K.: The potential influence of short-term environmental variability on the composition of testate amoeba communities in *Sphagnum* peatlands, *Microbiol. Ecol.*, 62, 80–93, <https://doi.org/10.1007/s00248-011-9875-y>, 2011.
- Turetsky, M. R. and Wieder, K.: Boreal bog *Sphagnum* refixes soil-produced and respired $^{14}\text{CO}_2$, *Écoscience*, 6, 587–591, 1999.
- van der Knaap, W. O., Lamentowicz, M., van Leeuwen, J. F. N., Hangartner, S., Leuenberger, M., Mauquoy, D., Goslar, T., Mitchell, E. A. D., Lamentowicz, L., and Kamenik, C.: A multi-proxy, high-resolution record of peatland development and its drivers during the last millennium from the subalpine Swiss Alps, *Quaternary Sci. Rev.*, 30, 3467–3480, <https://doi.org/10.1016/j.quascirev.2011.06.017>, 2011.
- Waddington, J. M., Morris, P. J., Kettridge, N., Granath, G., Thompson, D. K., and Moore, P. A.: Hydrological feedbacks in northern peatlands, *Ecohydrology*, 8, 113–127, <https://doi.org/10.1002/eco.1493>, 2015.
- Williams, T. G. and Flanagan, L. B.: Effect of changes in water content on photosynthesis, transpiration and discrimination against $^{13}\text{CO}_2$ and $\text{C}^{18}\text{O}^{16}\text{O}$ in *Pleurozium* and *Sphagnum*, *Oecologia*, 108, 38–46, 1996.
- Zanazzi, A. and Mora, G.: Paleoclimatic implications of the relationship between oxygen isotope ratios of moss cellulose and source water in wetlands of Lake Superior, *Chem. Geol.*, 222, 281–291, <https://doi.org/10.1016/j.chemgeo.2005.08.006>, 2005.