



Deposited via The University of Leeds.

White Rose Research Online URL for this paper:

<https://eprints.whiterose.ac.uk/id/eprint/136101/>

Version: Published Version

---

**Article:**

Watad, A, Cuthbert, RJ, Amital, H et al. (2018) Enthesitis: Much More Than Focal Insertion Point Inflammation. *Current Rheumatology Reports*, 20 (7). 41. ISSN: 1523-3774

<https://doi.org/10.1007/s11926-018-0751-3>

---

**Reuse**

This article is distributed under the terms of the Creative Commons Attribution (CC BY) licence. This licence allows you to distribute, remix, tweak, and build upon the work, even commercially, as long as you credit the authors for the original work. More information and the full terms of the licence here:

<https://creativecommons.org/licenses/>

**Takedown**

If you consider content in White Rose Research Online to be in breach of UK law, please notify us by emailing [eprints@whiterose.ac.uk](mailto:eprints@whiterose.ac.uk) including the URL of the record and the reason for the withdrawal request.



# Enthesitis: Much More Than Focal Insertion Point Inflammation

Abdulla Watad<sup>1,2,3</sup> · Richard J. Cuthbert<sup>3</sup> · Howard Amital<sup>1,2</sup> · Dennis McGonagle<sup>3</sup>

Published online: 30 May 2018  
© The Author(s) 2018

## Abstract

**Purpose of Review** Recognition of the importance of enthesitis as the pivotal pathological process underpinning spondyloarthropathies (SpA) has increased in recent years. Thus, we summarized the current knowledge on the pathogenic role of enthesitis on SpA shown by both animal models and human studies in vivo.

**Recent Findings** Experimental models have shown several SpA-like diseases that commence at entheses and are linked to nail disease as well as dactylitis, two important enthesal-associated conditions in humans. Frequently, enthesitis is not the primary outcome measure in studies of peripheral PsA and SpA although arguably it is the key parameter being indirectly assessed in spinal disease in ankylosing spondylitis. The use of different agents including JAK, IL-17, and IL-23 inhibitors contributes significantly to our understanding of enthesitis in terms of involved immune pathways.

**Summary** Enthesitis and enthesal organ inflammation may be the primary pathological process underlying SpA associated skeletal inflammation. Emergent studies are beginning to elucidate the molecular basis for this type of joint inflammatory response.

**Keywords** Enthesitis · Entheses · IL-17 · IL-23 · IL-12 · JAKi

## Introduction

In the last decades, great advances have occurred in the etiopathogenetic understanding of the spondyloarthropathies (SpA) which was paralleled by the introduction of the TNFi therapies resulted in better clinical outcomes. A pivotal component of these advances was the recognition that enthesitis, defined as inflammation of tendon, ligament, and joint capsule insertions to the bones, is the cardinal pathological process in the SpA group of diseases [1, 2]. In this article, we focus on recent aspects of enthesal biology in experimental studies and in man and update the reader on new therapy developments for enthesitis.

## Enthesis Microanatomy

The enthesal organ, defined as a group of tissues including fibrocartilages, bursa, fat pad, adjacent trabecular bone networks, deeper fascia, and enthesal, functions collectively to carry out a common task, namely anchorage and stress resistance [3, 4]. The recognition that the enthesal is an organ helps to conceptualize why enthesal inflammation may be associated with diffuse extracapsular swelling in addition to synovitis and osteitis. An especially important component of the enthesal organ is the synovio-enthesal complex where bursal and other synovial cavity resident macrophages provide lubrication, nourishment, and metabolic requirements as well as micro-debris waste disposal in health [5]. However, these resident macrophages have also been suggested to trigger severe joint swelling in disease [3, 6–8]. The functional anatomy of the enthesal and how fibrocartilage-lined joints, some of which wrap around tendons, function like entheses and the unifying mechanical explanation for disease that stems from these concepts has been well covered previously [4, 6]. Given the fact that both the nail and the flexor tendons are respectively anchored to the skeleton via the distal interphalangeal joint tendon or accessory pulleys, creating an enthesal-like structure provides further support for the key importance of the enthesal in SpA-related skin and joint manifestations [9].

---

This article is part of the Topical Collection on *Spondyloarthritis*

---

✉ Dennis McGonagle  
D.G.McGonagle@leeds.ac.uk

<sup>1</sup> Department of Medicine 'B', Zabludowicz Center for Autoimmune Diseases, Sheba Medical Center, Tel-Hashomer, Ramat Gan, Israel

<sup>2</sup> Sackler Faculty of Medicine, Tel-Aviv University, Tel-Aviv, Israel

<sup>3</sup> Section of Musculoskeletal Disease, Leeds Institute of Molecular Medicine, University of Leeds, NIHR Leeds Musculoskeletal Biomedical Research Unit, Chapel Allerton Hospital, Leeds, UK

## The Primacy of Enthesitis in Animal Models

Recently, several animal model studies have demonstrated the essential role of enthesitis in pathogenesis of the SpA group of diseases [10] and shed light on the importance of specific inflammatory pathways and various cytokines in acting locally such as IL-23 [8], IL-17, and IL-22 as key pro-inflammatory cytokine in SpA potentially secreted by enthesal resident cells [8, 11]. Indeed, as result of better understanding of the immune pathways involved in enthesitis, we are witnessing novel treatment advances that offer new opportunities to improve clinical enthesal disease including IL-23 and IL-17 blockers as biological agents, and small molecules such as PDE4 inhibitors and JAK inhibition [12–14].

However, the basis for the reported PDE4 inhibition efficacy for enthesitis, but not synovitis in RA, is not understood at this time.

In the last few years, several experimental animal models of SpA-like disease have helped elucidate the role of enthesitis as the primary pathological process in SpA, identifying various enthesal T cell subtypes and new immune pathways (Table 1). Systemic overexpression of IL-23 using hydrodynamic injection of IL-23 minicircle DNA activated IL-23R+, ROR- $\gamma$ t+ CD3+ CD4- CD8-, stem cell antigen 1 (Sca1)+ enthesal resident T cell lymphocytes inducing the transcript expression of IL-6, IL-17, and IL-22 as well as of CXCL1 genes [8]. The same technology induced arthritis and osteoblast-mediated bone remodeling and resulted in SpA-like bone formation manifestation of SpA with IL-22 but not IL-17A DNA minicircles [8]. However, in the aforementioned model, enthesitis was IL-17A dependent and this is consistent with the SKG mouse model of enthesitis [8, 15].

In 2016, it was shown that the majority of IL-23R-responsive cells in the normal murine entheses were  $\gamma\delta$  T cells expressing the RAR-related orphan receptor  $\gamma$ t (ROR- $\gamma$ t) transcription factor, as well as the IL-23 and CCR6 receptors, and are capable of IL-17A production [16]. More specifically, Reinhardt et al. analyzed enthesal lymphocytes from C57BL/6, Tcrd-H2BeGFP, Rorc-GFP, and IL-23R-eGFP murine models, after performing hydrodynamic injection of IL-23 minicircle DNA [16]. Activated V $\gamma$ 6+CD27-  $\gamma\delta$  T cells constituted the largest T cell subset [16]. Of particular relevance to the SpA concept was  $\gamma\delta$  T cells in the murine ciliary body, thus offering a micro anatomical and immunological link between the enthesitis and the eye [17].

TNF plays a key role in the pathogenesis of IBD, in which enthesitis is also a typical manifestation when the disease also involves extra-intestinal structures [18]. Another animal model demonstrating the involvement of entheses is the TNF overexpression model that was reported by Armaka et al. [19] who used a TNF transgenic model known as the TNF $\Delta$ ARE/+ mutant mice, characterized by the development of Crohn's-like IBD and SpA-like disease [20]. Bone marrow-grafting

experiments showed that development of arthritis was dependent on TNF receptor I (TNFRI) expression [21]. Indeed, it was shown that TNFRI expression in mesenchymal cells resulted in a SpA and intestinal phenotype, demonstrating that mesenchymal cells are primary targets in this model [19]. A confirmation of these findings is well given in the study by Milia et al. [22], who studied transgenic rats with high expression of HLA-B27 and human  $\beta$  (2)-microglobulin (B27TR), randomly assigned to TNFi treatment. Early and late administration of anti-TNF $\alpha$  antibodies prevented and improved inflammation and joint remodeling, respectively, preserving the enthesitis organization [22]. Interestingly, SMAD1/5/8 signaling, a marker of bone remodeling, was not inhibited by late anti-TNF $\alpha$  treatment [22]. These animal models kindled considerable interest in the theory that enthesitis therapy might be associated with irreversible new bone formation lesions following biological agent therapy. At the present time, the consensus is that the earlier that biological therapy is used in man, then the lower the likelihood of enthesal new bone formation occurrence in the spine [23].

Furthermore, enthesitis, or more specifically synovio-enthesal complex disease, has been reported as an early feature of paw inflammation in mice with a myeloid cell-specific A20 (TNF $\alpha$ -induced protein 3) deficiency [24]. These mice are characterized by high levels of inflammatory cytokines, leading to consistent NF- $\kappa$ B activation and significant production of TNF, IL-1, and IL-6 by macrophages [25]. Nevertheless, in the myeloid A20 knockout mice, SpA-type arthropathy is independent of TNF but dependent on IL-1 and IL-6 [25]. In the early phase of arthritis of these mice, Achilles tendon region swelling was noted, and hematoxylin-eosin staining showed inflammation of the synovio-enthesal complex (SEC) [24]. Disease was blocked by the tofacitinib administration which provided pre-clinical support for JAKi in PsA and SpA.

The importance of the IL-23/17 axis has been further supported by other experimental studies where disease also commences at the enthesitis and is associated with other SpA manifestations including nail disease and dactylitis [15, 26, 27]. There is evidence for local IL-23 production in the gut [28] and it has been proposed that systemic circulation of IL-23 could then trigger SpA at the entheses [8]. IL-23 activating resident T cells within the enthesitis promotes inflammation and bone remodeling mediated by IL-17 and osteoproliferation mediated by IL-22 [29]. Thus far, there is little data on the source of IL-23/17 axis cytokines driving human arthritis and questions relating to whether IL-23 in particular is locally or systemically produced remain to be elucidated.

## Human Studies of the Enthesis

The description of an IL-23-responsive population of T cells [8], along with the description of a group of cytokine-dependent

**Table 1** Selected murine enthesitis models

Reference	Species	Strain	Intervention	Characteristics
Reihardt et al. [16]	Mice	Terd-H2BeGFP mice crossed with mice of the susceptible B10.RIII background	Hydrodynamic injection of IL-23 minicircle DNA	Activated V $\gamma$ 6+CD27 $^{-}$ $\gamma$ $\delta$ T cells were found in uninflamed enthesal tissue and constituted the largest resident T cell subset.
Armaka et al. [59•]	Mice	TNF-overexpressing mouse model (TNF $^{\Delta ARE/+}$ )		Spondyloarthritis with a CD-like pathology localized primarily in the small intestine. Additionally, the development of arthritis was dependent on TNF receptor I (TNFRI) expression with mesenchymal cells being primary responders.
De wilde et al. [24]	Mice	A20 <sup>myelKO</sup> mice	A20 knockout	Enthesitis was found to be an early inflammatory lesion in A20 <sup>myelKO</sup> mice. A20 negatively modulated STAT1-dependent gene transcription in myeloid cells which was JAK/STAT dependent.
Benham et al. [15]	Mice	BALB/c ZAP-70(W163C)-mutant (SKG) mice	$\beta$ -1,3-Glucan injected intraperitoneally	In curdlan-treated SKG mice, arthritis, enthesitis, and ileitis were IL-23 dependent. Enthesitis was specifically dependent on IL-17A and IL-22. IL-17A was pathogenic, while IL-22 was protective against ileitis.
Sherlock et al. [8]	Mice	B10.RIII mice	Immunization with type II collagen	IL-23 is essential in enthesitis and acts on previously unidentified IL-23 receptor (IL-23R)+, RAR-related orphan receptor $\gamma$ 1 (ROR- $\gamma$ 1)+CD3+CD4 $^{-}$ CD8 $^{-}$ , stem cell antigen 1 (Sca1)+ enthesal resident T cells which led to the induction of IL-6, IL-17, and IL-22 as well as of CXCL1 secretion leading to osteoblast remodeling which is characteristic of enthesitis.

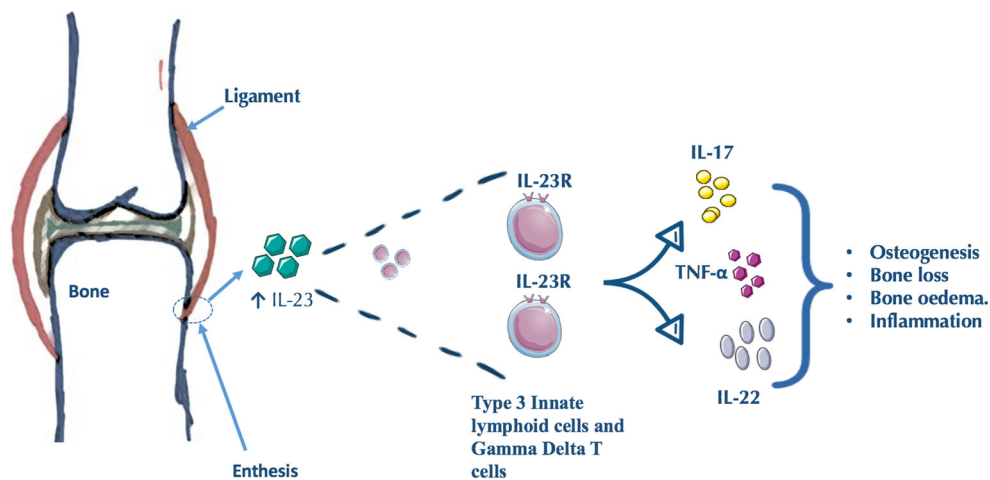
innate lymphoid cells (ILCs) [30], led to a search for innate immune cells at the normal human enthesis. We selected small normal interspinous process entheses from donors with no systemic inflammatory disease to explore the presence of type 3 ILC populations. [31••]. The small interspinous process entheses have advantages over large attachment sites like the Achilles tendon where thick juxta-articular fibrocartilaginous tissue that is completely devoid of immune cells precludes immune cell subset evaluation. We showed that the normal human enthesis did indeed harbor a rare population of IL-23R-expressing type 3 ILCs [31••]. We were also able to demonstrate the presence of a comparatively abundant population of  $\gamma$  $\delta$  T cells. In health, enthesal cells were present in both the enthesis soft tissue and the peri-enthesal bone [31••]. Furthermore, there was little evidence for expression of IL-17A transcripts in health, but of note, the IL-23R+ type 3 ILCs expressed TNF $\alpha$  transcript [31••]. Following stimulation of human enthesal tissue with IL-23 and IL-1 $\beta$ , we demonstrated upregulation of IL-17A and evidence for upregulation of IL-17F and IL-22 (Fig. 1). The inducible expression of IL-22 on these enthesal resident immunocytes and the recognition that IL-22 drives human MSC osteogenesis [32•] fit into a model whereby inflammation at the entheses may later drive new bone formation (Fig. 1).

## Evaluating Enthesitis

Unfortunately, in humans, enthesitis remains stubbornly difficult to assess [33]. The complete avascularity of entheses at bone attachment sites and the low vessel density in adjacent ligaments and tendons as well as the lack of adaptive hyperplasia that is normally seen in synovitis make assessment of these sites particularly challenging [33]. Moreover, despite the existence of various clinical measures for enthesitis, there is no sound consensus concerning their validity in PsA, since gold standard validation has not been performed. Therefore, it is necessary to rely on imaging rather than clinical examination in order to detect non-accessible sites of entheses. Indeed, numerous studies have shown that ultrasound (US) could detect a subclinical enthesitis in PsA patients [34–36].

Typically, enthesitis is associated with diffuse peri-enthesal soft tissue edema on magnetic resonance imaging (MRI) with this adjacent reaction being usually more conspicuous than inflammation within the insertion which reflects the greater vascularity of the peri-enthesal tissues (Fig. 2). Both entheses and sacroiliac fibrocartilaginous joints have prominent fibrocartilages and disease of both structures may be associated with an adjacent severe osteitis that likely reflects

**Fig. 1** Lymphocyte populations defined at the human enthesis. Thus far, two lymphocyte populations have been defined at the human enthesis. Innate lymphoid cells are part of the IL-23-responsive T cells which are residents of the healthy enthesis. Gamma delta T cells are also resident at the enthesis. The activation of resident T cells within the enthesis by IL-23 may promote inflammation, osteogenesis, and bone loss and remodeling. These lymphocyte populations may release different cytokines including IL-17 and IL-22 and TNF- $\alpha$



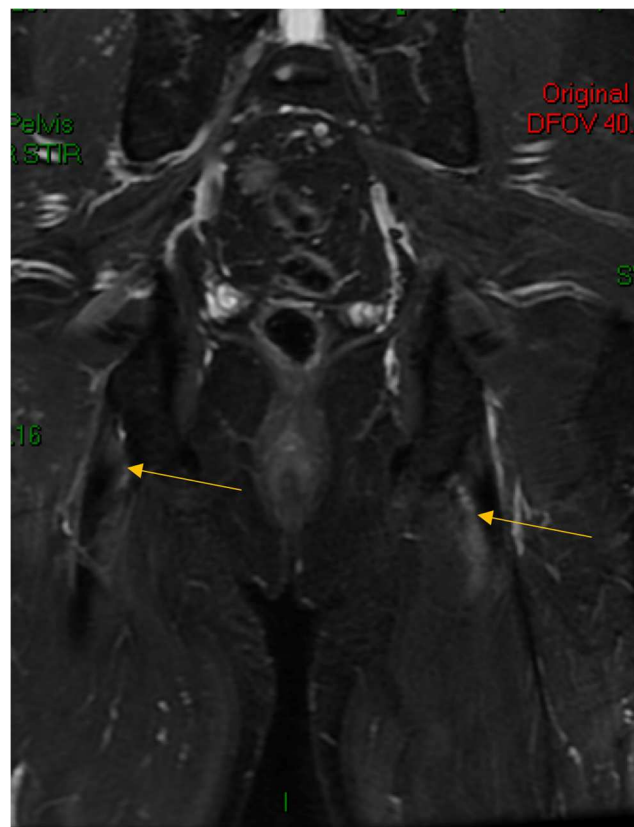
the excellent vascularity of the marrow (Fig. 3). However, neither MRI nor US excludes the presence of enthesitis, and the role of imaging remains controversial since the use of power Doppler (PD) which is typical of RA-related synovitis activity is generally much less conspicuous at insertions [37, 38]. Studies comparing clinical enthesitis with imaging enthesitis in SpA show virtually no correlations [34]. Furthermore, where suspected pathology is seen, it is uncommon to get tissue to confirm the diagnosis. Therefore, the assessment criteria remain subjective. The exact histopathological basis for the subclinical enthesial abnormalities present in PsA and other forms of SpA is poorly understood. However, a recent US study reported in abstract form has shown that subclinical enthesopathy in psoriasis cases regresses following anti-IL-12/23 therapy, suggesting an inflammatory component [39].

Among the diverse clinical measures for enthesitis, the Leeds Enthesitis Index (LEI) uses the medial collateral ligament (MCL) origin in both knees as a site of enthesitis [40]. This anatomic structure forms an elaborate synovio-entheseal complex that might be inflamed as a result of events taking place elsewhere within the synovial cavity; thus, it is hard to interpret exactly what tenderness at this location means and whether it could be linked to synovitis. It might be that these difficulties and complexities in recognizing and measuring enthesitis contributed to the GRAPPA-OMERACT for PsA standardization unwittingly dropped enthesitis from core domain assessments [41]. The move towards trials in early PsA makes the need to address enthesitis an urgent one since early disease may be strongly linked.

## Recent Clinical Developments

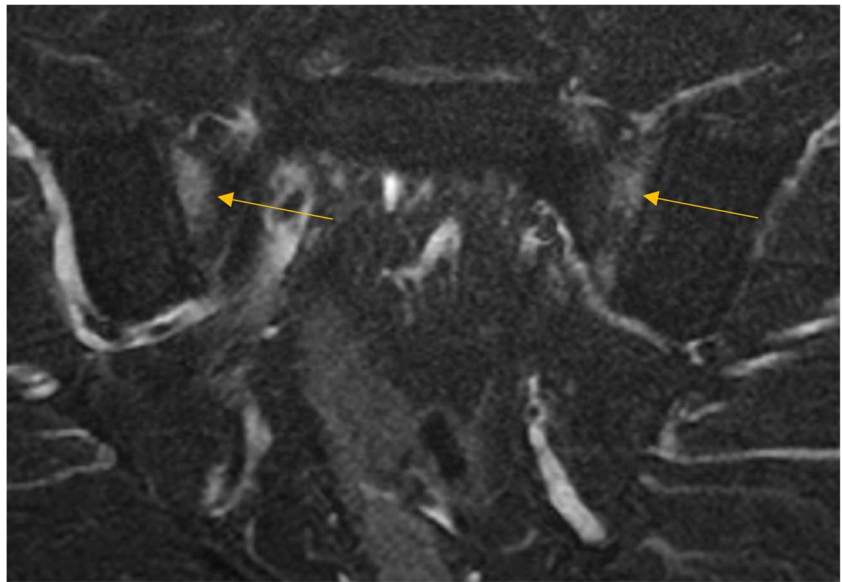
The response of human enthesitis to various therapeutic agents goes some way to improve the rudimentary state of

immunological knowledge about human enthesitis and the diverse immune pathways that are involved in disease [42]. Moreover, the use of enthesitis as an important manifestation of PsA, and its evaluation in drug trials, and clinical practice as well, has increased dramatically with enthesitis now a universal secondary outcome measure in trials [43]. The treatment of enthesitis remains a challenge. Conventional DMARDs such



**Fig. 2** Magnetic resonance imaging (MRI) of the sacroiliac joints (SIJ) showing bilateral ischial tuberosity enthesitis in a patient with new-onset PsA. The site of soft tissue enthesial inflammation is depicted by arrowheads. In this case, there is sparing of the bony attachment.

**Fig. 3** Magnetic resonance imaging (MRI) of the sacroiliac joints (SIJ) showing bilateral sacral joint bone marrow edema on in a patient with early psoriatic arthritis. The Bone marrow edema is more florid at the anterior part of the joint adjacent to the capsular entheses. It remains to be determined whether the patterns of inflammation at entheses in soft tissue or in the bone may influence responses to therapy



as sulfasalazine and methotrexate are not significantly effective for enthesitis management, yet NSAIDs remain the first-line therapy [43] although corticosteroid therapy including injection, where appropriate or feasible, is also an option. TNF blockade is the standard of care for enthesitis and severe axial disease in those patients with partial response to conventional DMARDs [44]. However, in recent years, many efforts were made to assess the efficacy of several therapeutic agents in enthesitis.

Recent phase 3 studies have shown efficacy of PDE4 blockers for PsA but with lower ACR 20 responses compared to the biologic class of drugs. A favorable effect of the PDE4 blocker, apremilast, on enthesitis has been reported [45, 46]. Given that the PDE4 blockers are ineffective in RA and do not block autoantibody production but suppress the neutrophil influx to sites of tissue inflammation [47], it is likely that these agents are working predominantly on innate immunity. This supports the idea of what we termed MHC-1-opathy [48], whereby in the SpA group of diseases, initial site-specific innate immune activation drives adaptive immune activation via CD8+ T cells, which in turn drive IL-17-related neutrophilic tissue inflammation exacerbation of these diseases [48]. Two recent studies have evaluated Janus kinase (JAK) inhibition with tofacitinib, a pan JAK inhibitor for the treatment of PsA [49, 50]. In biologic naïve cases, tofacitinib was compared to adalimumab, where enthesitis was assessed as a secondary outcome, reporting a favorable response [50]. However, in the second study, the pre-specified statistical hierarchical model used precluded an evaluation of enthesitis [49]. It is likely that JAK inhibition will represent a new option in the treatment of PsA and enthesitis. The precise mechanism of action of JAK inhibition is unclear since over 50 different cytokines including interleukins, CSFs, and hormones that share various signaling pathways are mediated by JAKs [51].

However, the two biggest classes of drugs used to treat PsA and AS, namely TNF and IL-17 inhibitors, do not signal directly through the JAK pathway [52]. Nevertheless, IL-23 signals via tyrosine kinase 2 (Tyk2) blockers for psoriasis support the idea of a therapy effect via IL-23 alone [51, 53].

An unexpected finding in this field is the apparent non-efficacy for ustekinumab for spinal enthesitis of AS despite its efficacy in the peripheral skeleton (data not published). The most obvious avenues for exploration are that the immune system at the immunobiology peripheral and axial entheses may be fundamentally different and that higher doses of anti-IL-23 pathway cytokine are needed for axial disease. One obvious difference is the relative absence of the synovio-enthesal complex in the spine and where pathology is often located at enthesal bone anchorage points [33]. However, this intriguing observation around IL-12/23 blockade apparent non-efficacy awaits further study including data on the IL-23 pathway antagonism with specific p19 blockers.

The IL-17 blockers have also been evaluated for their effect on enthesitis. Secukinumab an IL-17A blocker has shown efficacy for enthesitis in several trials [54, 55]. Ixekizumab, a second IL-17A blocker with a 50-fold higher affinity, showed efficacy for enthesitis in the P-SPIRIT-1 study [56]. However, in the P-SPIRIT 2 study with the same molecule in PsA cases that failed to respond to prior TNF blockade, there was no significant effect on enthesitis at the pre-specified 24-week assessment, but there was evidence for efficacy at earlier time points [57]. A third molecule, brodalumab, an IL-17RA blocker, was also evaluated for its effect on enthesitis and no significant effect was found in those patients who had scores of more than 0 for enthesitis at week 12 between the group receiving 140 mg of brodalumab and the group receiving 280 mg of brodalumab, as compared with the placebo group [58]. However, although not statistically significant, there was

a greater numerical improvement in enthesitis in subjects on higher dose of brodalumab. Given all the genetic and pathological data and the existing studies, it seems that these agents will be effective for the therapy of enthesitis.

## Conclusions

Enthesitis is much more than local inflammation; indeed, it is considered as the primary pathological process underlying SpA. This has been shown by investigating the enthesitis in both animal models and human studies *in vivo*. Enthesitis management is still a challenging matter for rheumatologists and various new agents were evaluated for their effect on enthesitis reporting different findings. The use of different agents including JAK, IL-17, and IL-23 inhibitors have contributed significantly to our understanding of enthesitis in terms of involved immune pathways. Nevertheless, there is an unmet need for further studies to improve our understanding about enthesopathy seeking a better detection, and therefore management.

## Compliance with Ethical Standards

**Conflict of Interest** The authors declare that they have no conflict of interest.

**Human and Animal Rights and Informed Consent** This article does not contain any studies with human or animal subjects performed by any of the authors.

**Open Access** This article is distributed under the terms of the Creative Commons Attribution 4.0 International License (<http://creativecommons.org/licenses/by/4.0/>), which permits unrestricted use, distribution, and reproduction in any medium, provided you give appropriate credit to the original author(s) and the source, provide a link to the Creative Commons license, and indicate if changes were made.

## References

Papers of particular interest, published recently, have been highlighted as:

- Of importance
- Of major importance

1. McGonagle D, Gibbon W, O'Connor P, Green M, Pease C, Emery P. Characteristic magnetic resonance imaging enthesal changes of knee synovitis in spondylarthropathy. *Arthritis Rheum.* 1998;41(4):694–700.
2. McGonagle D, Gibbon W, Emery P. Classification of inflammatory arthritis by enthesitis. *Lancet.* 1998;352(9134):1137–40.
3. Benjamin M, McGonagle D. The enthesitis organ concept and its relevance to the spondylarthropathies. *Adv Exp Med Biol.* 2009;649:57–70.

4. Shaw HM, Vazquez OT, McGonagle D, Bydder G, Santer RM, Benjamin M. Development of the human Achilles tendon enthesitis organ. *J Anat.* 2008;213(6):718–24.
5. McGonagle D, Aydin SZ, Tan AL. The synovio-enthesal complex and its role in tendon and capsular associated inflammation. *J Rheumatol Suppl.* 2012;89:11–4.
6. Benjamin M, Moriggl B, Brenner E, Emery P, McGonagle D, Redman S. The “enthesitis organ” concept: why enthesopathies may not present as focal insertional disorders. *Arthritis Rheum.* 2004;50(10):3306–13.
7. Apostolakis J, Durant TJS, Dwyer CR, Russell RP, Weinreb JH, Alaei F, et al. The enthesitis: a review of the tendon-to-bone insertion. *Muscles Ligaments Tendons J.* 2014;4(3):333–42.
8. Sherlock JP, Joyce-Shaikh B, Turner SP, Chao CC, Sathe M, Grein J, et al. IL-23 induces spondyloarthropathy by acting on ROR-gammat+ CD3+CD4-CD8- enthesal resident T cells. *Nat Med.* 2012;18(7):1069–76.
9. Benjamin M, Kaiser E, Milz S. Structure-function relationships in tendons: a review. *J Anat.* 2008;212(3):211–28.
10. McGonagle D, Tan AL. The enthesitis in psoriatic arthritis. *Clin Exp Rheumatol.* 2015;33(5 Suppl 93):S36–9.
11. Ahlfors H, Morrison PJ, Duarte JH, Li Y, Biro J, Tolaini M, et al. IL-22 fate reporter reveals origin and control of IL-22 production in homeostasis and infection. *J Immunol.* 2014;193(9):4602–13.
12. Kavanaugh A, Puig L, Gottlieb AB, Ritchlin C, Li S, Wang Y, et al. Maintenance of clinical efficacy and radiographic benefit through two years of ustekinumab therapy in patients with active psoriatic arthritis: results from a randomized, placebo-controlled phase III trial. *Arthritis Care Res (Hoboken).* 2015;67(12):1739–49.
13. Kavanaugh A, Mease PJ, Gomez-Reino JJ, Adebajo AO, Wollenhaupt J, Gladman DD, et al. Treatment of psoriatic arthritis in a phase 3 randomised, placebo-controlled trial with apremilast, an oral phosphodiesterase 4 inhibitor. *Ann Rheum Dis.* 2014;73(6):1020–6.
14. Ebihara S, Date F, Dong Y, Ono M. Interleukin-17 is a critical target for the treatment of ankylosing enthesitis and psoriasis-like dermatitis in mice. *Autoimmunity.* 2015;48(4):259–66.
15. Benham H, Rehaume LM, Hasnain SZ, Velasco J, Baillet AC, Ruutu M, et al. Interleukin-23 mediates the intestinal response to microbial beta-1,3-glucan and the development of spondyloarthritis pathology in SKG mice. *Arthritis Rheumatol.* 2014;66(7):1755–67.
16. Reinhardt A, Yevsa T, Worbs T, Lienenklaus S, Sandrock I, Oberdorfer L, et al. Interleukin-23-dependent gamma/delta T cells produce interleukin-17 and accumulate in the enthesitis, aortic valve, and ciliary body in mice. *Arthritis Rheumatol.* 2016;68(10):2476–86.
17. McGonagle D, Stockwin L, Isaacs J, Emery P. An enthesitis based model for the pathogenesis of spondyloarthropathy. Additive effects of microbial adjuvant and biomechanical factors at disease sites. *J Rheumatol.* 2001;28(10):2155–9.
18. Horton DB, Sherry DD, Baldassano RN, Weiss PF. Enthesitis is an extraintestinal manifestation of pediatric inflammatory bowel disease. *Ann Paediatr Rheumatol.* 2012;1(4):214. <https://doi.org/10.5455/apr.102920121510>.
19. Armaka M, Apostolaki M, Jacques P, Kontoyiannis DL, Elewaut D, Kollias G. Mesenchymal cell targeting by TNF as a common pathogenic principle in chronic inflammatory joint and intestinal diseases. *J Exp Med.* 2008;205(2):331–7.
20. Kontoyiannis D, Pasparakis M, Pizarro TT, Cominelli F, Kollias G. Impaired on/off regulation of TNF biosynthesis in mice lacking TNF AU-rich elements: implications for joint and gut-associated immunopathologies. *Immunity.* 1999;10(3):387–98.
21. Williams-Skipp C, Raman T, Valuck RJ, Watkins H, Palmer BE, Scheinman RI. Unmasking of a protective tumor necrosis factor receptor I-mediated signal in the collagen-induced arthritis model. *Arthritis Rheum.* 2009;60(2):408–18.

22. Milia AF, Ibba-Manneschi L, Manetti M, Benelli G, Generini S, Messerini L, et al. Evidence for the prevention of enthesitis in HLA-B27/hbeta(2)m transgenic rats treated with a monoclonal antibody against TNF-alpha. *J Cell Mol Med.* 2011;15(2):270–9.
23. Haroon N, Inman RD, Learch TJ, Weisman MH, Lee M, Rahbar MH, et al. The impact of tumor necrosis factor alpha inhibitors on radiographic progression in ankylosing spondylitis. *Arthritis Rheum.* 2013;65(10):2645–54.
24. De Wilde K, Martens A, Lambrecht S, Jacques P, Drennan MB, Debusschere K, et al. A20 inhibition of STAT1 expression in myeloid cells: a novel endogenous regulatory mechanism preventing development of enthesitis. *Ann Rheum Dis.* 2017;76(3):585–92.
25. Matmati M, Jacques P, Maelfait J, Verheugen E, Kool M, Sze M, et al. A20 (TNFAIP3) deficiency in myeloid cells triggers erosive polyarthritis resembling rheumatoid arthritis. *Nat Genet.* 2011;43(9):908–12.
26. Khmaladze I, Kelkka T, Guerard S, Wing K, Pizzolla A, Saxena A, et al. Mannan induces ROS-regulated, IL-17A-dependent psoriasis arthritis-like disease in mice. *Proc Natl Acad Sci U S A.* 2014;111(35):E3669–E78.
27. Sakkas LI, Bogdanos DP. Are psoriasis and psoriatic arthritis the same disease? The IL-23/IL-17 axis data. *Autoimmun Rev.* 2017;16(1):10–5.
28. Ciccia F, Accardo-Palumbo A, Rizzo A, Guggino G, Raimondo S, Giardina A, et al. Evidence that autophagy, but not the unfolded protein response, regulates the expression of IL-23 in the gut of patients with ankylosing spondylitis and subclinical gut inflammation. *Ann Rheum Dis.* 2014;73(8):1566–74.
29. Kehl AS, Corr M, Weisman MH. Enthesitis: new insights into pathogenesis, diagnostic modalities, and treatment. *Arthritis Rheumatol (Hoboken, NJ).* 2016;68(2):312–22.
30. Spits H, Artis D, Colonna M, Diefenbach A, Di Santo JP, Eberl G, et al. Innate lymphoid cells—a proposal for uniform nomenclature. *Nat Rev Immunol.* 2013;13(2):145–9.
31. Cuthbert RJ, Fragkakis EM, Dunsmuir R, Li Z, Coles M, Marzo-Ortega H, et al. Brief report: group 3 innate lymphoid cells in human entheses. *Arthritis Rheumatol.* 2017;69(9):1816–22. **This is a very important study that indicates the presence of resident innate lymphocytes in human entheses that may have a pathogenic role in SpA.**
32. El-Zayadi AA, Jones EA, Churchman SM, Baboolal TG, Cuthbert RJ, El-Jawhari JJ, et al. Interleukin-22 drives the proliferation, migration and osteogenic differentiation of mesenchymal stem cells: a novel cytokine that could contribute to new bone formation in spondyloarthropathies. *Rheumatology (Oxford).* 2017;56(3):488–93. **This study shows the importance of IL-22 as a key pro-inflammatory cytokine in the SpA group of diseases.**
33. Benjamin M, McGonagle D. The anatomical basis for disease localisation in seronegative spondyloarthropathy at entheses and related sites. *J Anat.* 2001;199(Pt 5):503–26.
34. Bandinelli F, Prignano F, Bonciani D, Bartoli F, Collaku L, Candelieri A, et al. Ultrasound detects occult enthesal involvement in early psoriatic arthritis independently of clinical features and psoriasis severity. *Clin Exp Rheumatol.* 2013;31(2):219–24.
35. Freeston JE, Coates LC, Helliwell PS, Hensor EM, Wakefield RJ, Emery P, et al. Is there subclinical enthesitis in early psoriatic arthritis? A clinical comparison with power doppler ultrasound. *Arthritis Care Res (Hoboken).* 2012;64(10):1617–21.
36. Hamdy M, Omar G, Elshereef RR, Ellaban AS, Amin M. Early detection of spondyloarthropathy in patients with psoriasis by using the ultrasonography and magnetic resonance image. *Eur J Rheumatol.* 2015;2(1):10–5.
37. Marzo-Ortega H, McGonagle D, O'Connor P, Emery P. Efficacy of etanercept in the treatment of the enthesal pathology in resistant spondylarthropathy: a clinical and magnetic resonance imaging study. *Arthritis Rheum.* 2001;44(9):2112–7.
38. McGonagle D, Marzo-Ortega H, O'Connor P, Gibbon W, Pease C, Reece R, et al. The role of biomechanical factors and HLA-B27 in magnetic resonance imaging-determined bone changes in plantar fascia enthesopathy. *Arthritis Rheum.* 2002;46(2):489–93.
39. Laura Savage, Mark Goodfield, Elizabeth M.A. Hensor, Paul Emery, McGonagle D. Ultrasonographic improvement of peripheral subclinical enthesopathy in therapy-naive patients treated with ustekinumab for chronic plaque psoriasis: a 52-week, prospective, open label, controlled cohort study. Abstract ACR. 2016.
40. Healy PJ, Helliwell PS. Measuring clinical enthesitis in psoriatic arthritis: assessment of existing measures and development of an instrument specific to psoriatic arthritis. *Arthritis Rheum.* 2008;59(5):686–91.
41. Orbai AM, Mease PJ, de Wit M, Kalyoncu U, Campbell W, Tillett W, et al. Report of the GRAPPA-OMERACT Psoriatic Arthritis Working Group from the GRAPPA 2015 Annual Meeting. *J Rheumatol.* 2016;43(5):965–9.
42. Lubberts E. The IL-23-IL-17 axis in inflammatory arthritis. *Nat Rev Rheumatol.* 2015;11(7):415–29.
43. Sakkas LI, Alexiou I, Simopoulou T, Vlychou M. Enthesitis in psoriatic arthritis. *Semin Arthritis Rheum.* 2013;43(3):325–34.
44. Coates LC, Kavanaugh A, Mease PJ, Soriano ER, Laura Acosta-Felquer M, Armstrong AW, et al. Group for research and assessment of psoriasis and psoriatic arthritis 2015 treatment recommendations for psoriatic arthritis. *Arthritis Rheumatol.* 2016;68(5):1060–71.
45. Edwards CJ, Blanco FJ, Crowley J, Birbara CA, Jaworski J, Aelion J, et al. Apremilast, an oral phosphodiesterase 4 inhibitor, in patients with psoriatic arthritis and current skin involvement: a phase III, randomised, controlled trial (PALACE 3). *Ann Rheum Dis.* 2016;75(6):1065–73.
46. Kavanaugh A, Mease PJ, Gomez-Reino JJ, Adebajo AO, Wollenhaupt J, Gladman DD, et al. Longterm (52-week) results of a phase III randomized, controlled trial of apremilast in patients with psoriatic arthritis. *J Rheumatol.* 2015;42(3):479–88.
47. Costa L, Del Puente A, Peluso R, Tasso M, Caso P, Chimenti MS, et al. Small molecule therapy for managing moderate to severe psoriatic arthritis. *Expert Opin Pharmacother.* 2017;18(15):1557–67.
48. McGonagle D, Aydin SZ, Gul A, Mahr A, Direskeneli H. 'MHC-I-opathy'-unified concept for spondyloarthritis and Behcet disease. *Nat Rev Rheumatol.* 2015;11(12):731–40.
49. Gladman D, Rigby W, Azevedo VF, Behrens F, Blanco R, Kaszuba A, et al. Tofacitinib for psoriatic arthritis in patients with an inadequate response to TNF inhibitors. *N Engl J Med.* 2017;377(16):1525–36. **This is an important study to show the involvement of JAK signal pathways in PsA and the efficacy of JAKi in the treatment of PsA.**
50. Mease P, Hall S, FitzGerald O, van der Heijde D, Merola JF, Avila-Zapata F, et al. Tofacitinib or adalimumab versus placebo for psoriatic arthritis. *N Engl J Med.* 2017;377(16):1537–50.
51. Schwartz DM, Kanno Y, Villarino A, Ward M, Gadina M, O'Shea JJ. JAK inhibition as a therapeutic strategy for immune and inflammatory diseases. *Nat Rev Drug Discov.* 2017;16(12):843–862. **This is a review paper that provides an elegant summary of the role of JAK signal pathways in the diverse autoimmune diseases.**
52. Eyerich S, Eyerich K, Cavani A, Schmidt-Weber C. IL-17 and IL-22: siblings, not twins. *Trends Immunol.* 2010;31(9):354–61.
53. Ritchlin C, Rahman P, Kavanaugh A, McInnes IB, Puig L, Li S, et al. Efficacy and safety of the anti-IL-12/23 p40 monoclonal antibody, ustekinumab, in patients with active psoriatic arthritis despite conventional non-biological and biological anti-tumour necrosis factor therapy: 6-month and 1-year results of the phase 3, multicentre, double-blind, placebo-controlled, randomised PSUMMIT 2 trial. *Ann Rheum Dis.* 2014;73(6):990–9.
54. Mease P, McInnes IB. Secukinumab: a new treatment option for psoriatic arthritis. *Rheumatol Ther.* 2016;3(1):5–29.

55. McInnes IB, Mease PJ, Ritchlin CT, Rahman P, Gottlieb AB, Kirkham B, et al. Secukinumab sustains improvement in signs and symptoms of psoriatic arthritis: 2 year results from the phase 3 FUTURE 2 study. *Rheumatology (Oxford)*. 2017;56(11):1993–2003.
56. Mease PJ, van der Heijde D, Ritchlin CT, Okada M, Cuchacovich RS, Shuler CL, et al. Ixekizumab, an interleukin-17A specific monoclonal antibody, for the treatment of biologic-naive patients with active psoriatic arthritis: results from the 24-week randomised, double-blind, placebo-controlled and active (adalimumab)-controlled period of the phase III trial SPIRIT-P1. *Ann Rheum Dis*. 2017;76(1):79–87.
57. Nash P, Kirkham B, Okada M, Rahman P, Combe B, Burmester GR, et al. Ixekizumab for the treatment of patients with active psoriatic arthritis and an inadequate response to tumour necrosis factor inhibitors: results from the 24-week randomised, double-blind, placebo-controlled period of the SPIRIT-P2 phase 3 trial. *Lancet*. 2017;389(10086):2317–27.
58. Mease PJ, Genovese MC, Greenwald MW, Ritchlin CT, Beaulieu AD, Deodhar A, et al. Brodalumab, an anti-IL17RA monoclonal antibody, in psoriatic arthritis. *N Engl J Med*. 2014;370(24):2295–306.
59. Armaka M, Apostolaki M, Jacques P, Kontoyiannis DL, Elewaut D, Kollias G. Mesenchymal cell targeting by TNF as a common pathogenic principle in chronic inflammatory joint and intestinal diseases. *J Exp Med*. 2008;205(2):331–7. **An important clinical study and one of the very few that includes enthesitis as an outcome in the treatment of PsA.**