



UNIVERSITY OF LEEDS

This is a repository copy of *Explosive X-point collapse in relativistic magnetically dominated plasma*.

White Rose Research Online URL for this paper:
<http://eprints.whiterose.ac.uk/131336/>

Version: Accepted Version

Article:

Lyutikov, M, Sironi, L, Komissarov, SS et al. (1 more author) (2017) Explosive X-point collapse in relativistic magnetically dominated plasma. *Journal of Plasma Physics*, 83 (6). 635830601. ISSN 0022-3778

<https://doi.org/10.1017/S0022377817000629>

(c) Cambridge University Press 2017. This article has been published in a revised form in *Journal of Plasma Physics* <https://doi.org/10.1017/S0022377817000629> This version is free to view and download for private research and study only. Not for re-distribution, re-sale or use in derivative works.

Reuse

Items deposited in White Rose Research Online are protected by copyright, with all rights reserved unless indicated otherwise. They may be downloaded and/or printed for private study, or other acts as permitted by national copyright laws. The publisher or other rights holders may allow further reproduction and re-use of the full text version. This is indicated by the licence information on the White Rose Research Online record for the item.

Takedown

If you consider content in White Rose Research Online to be in breach of UK law, please notify us by emailing eprints@whiterose.ac.uk including the URL of the record and the reason for the withdrawal request.



eprints@whiterose.ac.uk
<https://eprints.whiterose.ac.uk/>

Explosive X -point collapse in relativistic magnetically-dominated plasma

Maxim Lyutikov,¹ Lorenzo Sironi², Serguei S. Komissarov^{1,3}, Oliver Porth^{3,4}

¹ Department of Physics, Purdue University, 525 Northwestern Avenue, West Lafayette, IN 47907-2036, USA; lyutikov@purdue.edu

² Department of Astronomy, Columbia University, 550 W 120th St, New York, NY 10027, USA; lsironi@astro.columbia.edu

³ School of Mathematics, University of Leeds, LS29JT Leeds, UK; s.s.komissarov@leeds.ac.uk

⁴ Institut für Theoretische Physik, J. W. Goethe-Universität, D-60438, Frankfurt am Main, Germany porth@th.physik.uni-frankfurt.de

(Received xx; revised xx; accepted xx)

The extreme properties of the gamma ray flares in the Crab Nebula present a clear challenge to our ideas on the nature of particle acceleration in relativistic astrophysical plasma. It seems highly unlikely that standard mechanisms of stochastic type are at work here and hence the attention of theorists has switched to linear acceleration in magnetic reconnection events. In this series of papers, we attempt to develop a theory of explosive magnetic reconnection in highly-magnetised relativistic plasma which can explain the extreme parameters of the Crab flares. In the first paper, we focus on the properties of the X -point collapse. Using analytical and numerical methods (fluid and particle-in-cell simulations) we extend Syrovatsky's classical model of such collapse to the relativistic regime. We find that the collapse can lead to the reconnection rate approaching the speed of light on macroscopic scales. During the collapse, the plasma particles are accelerated by charge-starved electric fields, which can reach (and even exceed) values of the local magnetic field. The explosive stage of reconnection produces non-thermal power-law tails with slopes that depend on the average magnetization σ . For sufficiently high magnetizations and vanishing guide field, the non-thermal particle spectrum consists of two components: a low-energy population with soft spectrum, that dominates the number census; and a high-energy population with hard spectrum, that possesses all the properties needed to explain the Crab flares.

1. Introduction

The detection of flares from Crab Nebula by AGILE and Fermi satellites (Tavani *et al.* 2011; Abdo *et al.* 2011; Buehler *et al.* 2012) is one of the most astounding discoveries in high energy astrophysics. The unusually short durations, high luminosities, and high photon energies of the Crab Nebula gamma-ray flares require reconsideration of our basic assumptions about the physical processes responsible for acceleration of the highest-energy emitting particles in the Crab Nebula, and, possibly in other high-energy astrophysical sources.

The Crab flares are characterised by an increase of gamma-ray flux above 100 MeV by a factor of few or more on the day time-scale. This energy corresponds to the high end of the Crab's synchrotron spectrum. Most interestingly, in the other energy bands nothing unusual has been observed during the flares so far (Weisskopf *et al.* 2013). This suggests that the physical processes behind the flares lead to a dramatic increase of the highest energy population of relativistic electrons in the nebula, whereas lower energy population remains largely unaffected. The short duration of flares indicate explosive and highly localised events.

Most importantly, the peak of the flare spectrum approaches and even exceeds the maximal rest-frame synchrotron photon energy (de Jager *et al.* 1996; Lyutikov 2010; Clausen-Brown & Lyutikov 2012). Balancing the synchrotron energy losses in the magnetic field B against the energy gain via acceleration in the electric field of strength $E = \eta B$ leads to the upper limit of the synchrotron photon energy

$$\epsilon_{\max} \sim \eta \hbar \frac{mc^3}{e^2} \approx 100\eta \text{ MeV}$$

The high conductivity of astrophysical plasma ensures that for typical accelerating electric field $\eta < 1$. The fact that the flare spectrum extends beyond this limit pushes η towards unity, which implies energy gain on the scale of the gyration period. This practically *excludes stochastic acceleration mechanisms* in general and the shock acceleration in particular. In principle, strong Doppler boosting could somewhat reduce this constraint Bednarek & Idec (2011); Clausen-Brown & Lyutikov (2012) but the lack of observational evidence for ultra-relativistic macroscopic motion inside the nebula makes this unlikely.

A widely discussed alternative to the shock acceleration mechanism is the particle acceleration accompanying magnetic reconnection. It is well known that magnetic reconnection can lead to explosive release of magnetic energy, e.g. in solar flares. However, properties of plasma in the Crab Nebula, as well as magnetospheres of pulsars and magnetars, pulsar winds, AGN and GRB jets and other targets of relativistic astrophysics, are very different from those of more conventional Solar and laboratory plasmas (Lyutikov & Lazarian 2013). In particular, the energy density of magnetic field can exceed not only the thermal energy density but also the rest mass-energy density of plasma particles. In order to quantify such a strong magnetization, it is convenient to use the relativistic magnetization parameter

$$\sigma = \frac{B^2}{4\pi w} \quad (1.1)$$

where $w = \rho c^2 + (\hat{\gamma} p / \hat{\gamma} - 1)$ is the relativistic enthalpy, which includes the rest mass-energy density of plasma. In traditional plasmas this parameter is very small but in relativistic astrophysics $\sigma \gg 1$ is quite common. This parameter is uniquely related to the Alfvén speed v_A via

$$(v_A/c)^2 = \sigma / (1 + \sigma).$$

The physics of particle acceleration in relativistic current sheets has been addressed in a number of recent studies (e.g. [Bessho & Bhattacharjee 2012](#); [Guo *et al.* 2015](#); [Nalewajko *et al.* 2015](#); [Deng *et al.* 2015](#), and others). In particular, the Colorado group ([Uzdensky *et al.* 2011](#); [Cerutti *et al.* 2012*a,b*, 2013](#)) explored the possibility of explaining the Crab flares. Their 2D PIC simulations demonstrated the development of the relativistic tearing instability (see also [Lyutikov 2003](#); [Komissarov *et al.* 2007](#)), followed by a transition to the plasmoid-dominated regime. In addition to a number of useful properties, the current sheet reconnection has some generic features which seem to be in conflict with the observations of the Crab flares.

First, in the collisionless plasma the key length scales of reconnection current sheet are microscopic and determined by to the plasma skin depth. This applies to the thickness of the current sheet, the distance between plasmoids (magnetic ropes) and the correlation scale of the accelerating electric field. As a result the typical potential available for linear acceleration is limited to that over microscopic scales (few skin depths), which is too small to explain the flares spectrum. The correlation scale can be increased with introduction of strong guide field but this leads to a significant reduction of the reconnection rate ([Zenitani & Hoshino 2008](#)).

Second, the recent PIC studies of relativistic reconnection have demonstrated that even in the absence of the guide field the reconnection rate (inflow velocity) in 3D simulations is significantly lower than in 2D ([Sironi & Spitkovsky 2014](#)). Thus, for a reference magnetization $\sigma = 10$ the reconnection rate in 2D is $r_{\text{rec}} \sim 0.1$ whereas in 3D it is only $r_{\text{rec}} \sim 0.02$ ([Sironi & Spitkovsky 2014](#)). The slower reconnection rate leads to a weaker accelerating electric field. Moreover, for a given flare duration it translates into a smaller utilised magnetic energy.

Finally, and most importantly, Crab flares require acceleration to Lorentz factors $\gamma \sim 10^9$. In the simulations of ([Uzdensky *et al.* 2011](#); [Cerutti *et al.* 2012*a,b*, 2013](#)) all the particles present within the acceleration region get accelerated to similar energies. In such a case, the terminal Lorentz factor is limited by $\gamma_{\text{max}} \sim \sigma$, which requires unreasonably highly magnetized regions to exist inside the Crab nebula.

These problems may stem from the simplified slab (or, plane-parallel) geometry of the initial configuration, enforced by the periodic boundary conditions, which was considered in the above studies. Indeed, this excludes the large-scale magnetic stresses which in highly-magnetized plasma may lead to explosive high-speed dynamics on macroscopic length scales. In this series of papers, we explore the role of the macroscopic factor by considering various initial configurations and studying their macroscopic evolution using fluid-type models of magnetized relativistic plasma. Each such study is accompanied by PIC simulations, which allows to study the specifics of particle acceleration resulted from the involved magnetic reconnection. We start by considering the classical problem of the X-point collapse.

The theoretical studies of the X-point collapse trace back to the work by [Dungey \(1953\)](#), who argued that a neutral X-point is unstable and that particles can be accelerated during its collapse. The ideas of Dungey were put on a firm basis by [Imshennik & Syrovatskivi \(1967\)](#), who found corresponding non-linear MHD solutions (see also [Priest & Forbes 2000](#)). The solutions of [Sweet \(1969\)](#); [Imshennik & Syrovatskivi \(1967\)](#); [Syrovatskii \(1981\)](#) were obtained in what we can nowadays call a quasi-static force-free approximation: neglecting the pressure effects (hence force-free), but also neglecting the dynamic effects of the electric field (hence the name quasi-static). In this paper we extend these studies by considering the case of highly-magnetized plasma ($\sigma \gg 1$).

We start by describing an approximate analytical solution found in the framework

of force-free electrodynamics (Section 2). The solution shows that in highly-magnetised plasma X-points remain unstable to collapse. This result is verified by our numerical simulations, which also allow a more comprehensive study the dynamics of X-point collapse (Sections 3 and 4). Using 2D Particle-in-Cell (PIC) simulations, we studied the process of non-thermal particle acceleration accompanying the collapse (Sections 4). The results show a number features, which have not been seen in previous studies, focused on relativistic reconnection in plane current sheet, and which may have important implications in the theory of Crab flares. In Section 5 we summarise our main results and discuss their implications.

2. Asymptotic model of X-point collapse in force-free plasma

2.1. Dynamic force-free plasma

Explosive release of magnetic energy is a common phenomenon in laboratory and space plasmas (e.g. Priest & Forbes 2000). Syrovatskii (Imshennik & Syrovatskivi 1967; Syrovatskii 1975, 1981) argued that it could be related to the macroscopic instability of magnetic X-point configuration and studied it in the framework of non-relativistic MHD (see also Cowley & Artun 1997). In this Section, we develop this theory farther by considering the case of highly magnetized relativistic plasma with $\sigma \gg 1$. In this regime, (i) the mass-density of plasma is dominated by the magnetic field, (ii) the Alfvén speed approaches the speed of light, (iii) the conduction current flows mostly along the magnetic fieldlines, (iv) the displacement current $(c/4\pi)\partial_t\mathbf{E}$ may be comparable to the conduction current, \mathbf{j} , (v) the electric charge density, ρ_e , may be of the order of j/c .

The large value of σ (or small $1/\sigma$) can be used as an expansion parameter in the equations of relativistic magnetohydrodynamics. The zero order equations describe the so-called *force-free electrodynamics* or *magnetodynamics*, Komissarov (2002). In this approximation, the inertia of plasma particle is ignored and hence the macroscopic Lorentz force completely vanishes. Hence the energy and momentum of the electromagnetic fields are conserved. The perfect conductivity condition reduces to $\mathbf{E} \cdot \mathbf{B} = 0$ and $E^2 < B^2$, which ensure existence of inertial frames where $\mathbf{E} = 0$.

The electric current of ideal force-free electrodynamics can be written entirely in terms of the electromagnetic field and its spatial derivatives

$$\mathbf{J} = \frac{c}{4\pi} \frac{(\mathbf{E} \times \mathbf{B})\nabla \cdot \mathbf{E} + (\mathbf{B} \cdot \nabla \times \mathbf{B} - \mathbf{E} \cdot \nabla \times \mathbf{E})\mathbf{B}}{B^2} \quad (2.1)$$

(Uchida 1997; Gruzinov 1999). This may be considered as the Ohm's law of this approximation. Similarly to resistive MHD, one can modify this law and introduce magnetic dissipation (e.g. Lyutikov 2003; Li *et al.* 2012, see also §3). Importantly, only the parallel component of the electric current is subject to resistive dissipation.

2.2. Stressed X-point collapse in force-free plasma: analytical solution

The non-current-carrying unstressed X-point configuration with translational symmetry along the z axis is described by the vector potential

$$A_z = -(x^2 - y^2) \frac{B_0}{2L}.$$

It has null lines intersecting at 90 degrees at the origin, where the magnetic field vanishes. B_0 is the magnetic field strength at the distance L from the origin. When uniformly squeezed, such an X-point is known to be unstable to collapse in the non-relativistic regime (Dungey 1953; Imshennik & Syrovatskivi 1967; Priest & Forbes 2000). In the

force-free limit, such a solution develops a singularity from the start, unless we introduce a guide field. For simplicity, here we consider a uniform guide field $B_z = B_0$, which makes L a characteristic length scale of our problem: at $r = L$ the guide field has the same strength as the field of the X-point. In the following, we deal with dimensionless equations using L as the unit length scale, L/c as the unit time scale and B_0 as the unit field strength.

Following the previous work on the X-point collapse, we look for approximate solutions in the form

$$A_z = -\frac{1}{2} \left(\frac{x^2}{a(t)^2} - \frac{y^2}{b(t)^2} \right), \quad (2.2)$$

which assumes that at all times the configuration can be described as uniformly squeezed. This configuration is similar to the unstressed one but the null lines run at an angle determined by the ratio a/b . Without loss of generality, we can put $a(0) = 1$ and $b(0) = \lambda$, making λ a parameter describing the initial perturbation. Such solutions exist only in the limit $x, y \ll 1$ and $t \ll 1$, where the guide field remains largely unchanged. Hence we put

$$\begin{aligned} \mathbf{B} &= \text{curl}(A_z \mathbf{e}_z) + \mathbf{e}_z \\ \mathbf{E} &= -\partial_t \mathbf{A} + \nabla \Phi(t, x, y) \end{aligned} \quad (2.3)$$

and the force-free condition $\mathbf{E} \cdot \mathbf{B} = 0$ reads

$$\left(-x^2 \frac{\partial_t a}{a^3} + y^2 \frac{\partial_t b}{b^3} \right) + \left(\frac{x \partial_y \Phi}{a^2} + \frac{y \partial_x \Phi}{b^2} \right) = 0. \quad (2.4)$$

This implies

$$\begin{aligned} b(t) &= \lambda/a(t) \\ \Phi &= xy \frac{\dot{a}}{a} \end{aligned} \quad (2.5)$$

and hence $a(t)$ (or $b(t)$) is the only unknown function of the problem[†]. Substituting the expressions for the electric and magnetic fields into the Maxwell equation yields an ordinary differential equation for $a(t)$. Since $x, y \ll 1$

$$\begin{aligned} \mathbf{B} \cdot \text{curl} \mathbf{B} &\simeq (1/a^2 - (a/\lambda)^2), \\ \mathbf{E} \cdot \text{curl} \mathbf{E} &\simeq 2\dot{a}^2 \left(\frac{1}{a^4} x^2 + \frac{1}{\lambda^2} y^2 \right), \end{aligned}$$

and the Maxwell equation reduces to

$$\frac{d}{dt} \left(\frac{\dot{a}}{a} \right) = \frac{a^4 - \lambda^2}{\lambda^4}. \quad (2.6)$$

Given $a(t)$ the electromagnetic field can be found via

$$\begin{aligned} \mathbf{B} &= \left(\frac{ya^2}{\lambda^2}, \frac{x}{a^2}, 1 \right), \\ \mathbf{E} &= \left(y, x, -\frac{x^2 \lambda^2 + y^2 a^4}{\lambda^2 a^2} \right) \frac{\dot{a}}{a}. \end{aligned} \quad (2.7)$$

Solutions of the equations (2.6) show that “the squeeziness” parameter $a(t)$ has a finite time singularity for $\lambda < 1$: in finite time a becomes infinite, Fig. 1.

[†] Notice that $\Delta \Phi = 0$ and hence the electric charge density remains vanishing all the time.

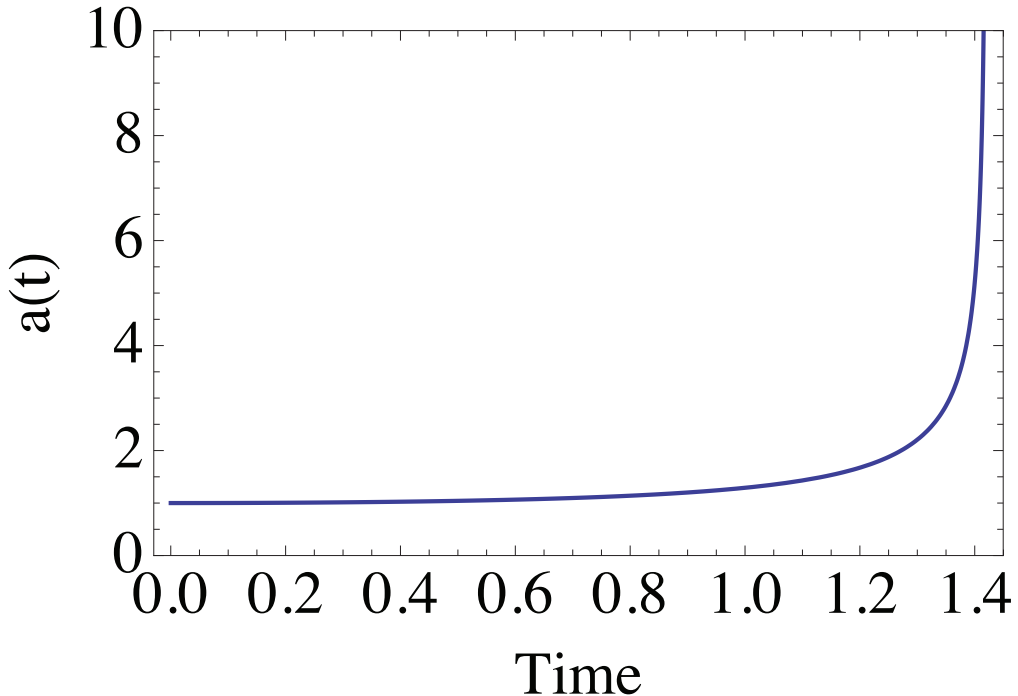


FIGURE 1. An example of the evolution of the parameter $a(t)$, Eq. (2.6). Initially an X-point is squeezed by ten percent, $\lambda = 0.9$, parameter $\mathcal{A} = 1$. Evolution occurs on the dynamical time scale, until a singularity at $t = 1.42$, so that the fast growing stage of the collapse proceeds much quicker.

(For $\lambda > 1$ in finite time a becomes zero, so that b becomes infinite.) Thus, we have generalized the classic solution of Imshennik & Syrovatskivi (1967) to the case of force-free plasma. At the moment when one of the parameters a or b becomes zero, the current sheet forms, see Fig. 2. †

For small initial deformation of the X-point, $\lambda = 1 - \epsilon$ where $\epsilon \ll 1$ is a small parameter. Given the initial conditions $a(0) = 1$, $\dot{a}(0) = 0$, the corresponding asymptotic solution of Eq.2.6 is

$$a \simeq 1 + \epsilon \sinh^2 t. \quad (2.8)$$

This solution is not uniform as at $t_c \approx (1/2) \ln(1/\epsilon)$ the perturbation becomes large. This sets the typical time scale of the X-point collapse. Since the unit time is L/c , where L is the distance where the guide field has the same strength as the in-plane magnetic field of the X-point, it is obvious that with vanishing guide field the collapse occurs instantaneously.

In this solution, the electric field grows as

$$\mathbf{E} \simeq \epsilon(y, x, -x^2 + y^2) \sinh 2t, \quad (2.9)$$

† In this analysis, the perturbation is of a rather specific type - a compression on scales well exceeding L . We probed the reaction of the X-point to small-scale perturbations, of wavelengths $\lambda \ll L$, using numerical simulations. The X-point appears to be stable to such perturbations (see Appendix A). We have also verified that the evolution of the system in case of slowly developing or periodic stress proceeds in a similar fashion - periodic reversing the stress does not stop the collapse.

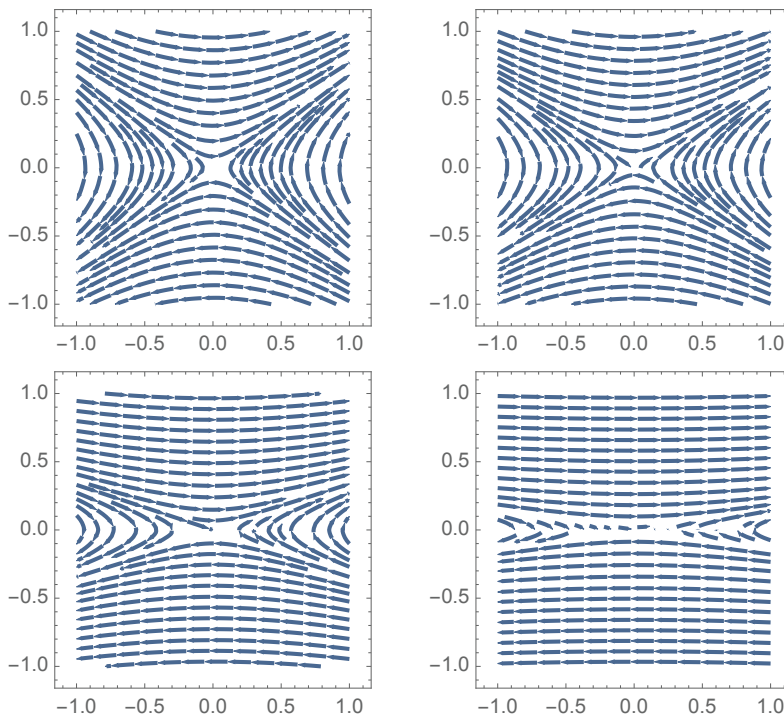


FIGURE 2. Structure of the magnetic field in the $x-y$ plane during X-point collapse in force-free plasma. The initial configuration on the left is slightly “squeezed”, $\lambda = 0.9$. On dynamical time scale the X-point collapses to form a current sheet, right Fig. The structure of the electric field in the $x-y$ plane does not change during the collapse and qualitatively resembles the $t = 0$ configuration of the magnetic field.

indicating that at $t \approx t_c$ it may become comparable to the magnetic field. Importantly, the ratio of the electric field, dominated mostly by E_z , to the magnetic field, dominated at late times by B_x , increases with y (distances away from the newly forming current sheet),

$$\frac{E_z}{B_x} \propto y \quad (2.10)$$

Thus, the analytical model predicts that the electric field becomes of the order of the magnetic field in a large domain, not only close to the null line. This is confirmed by numerical simulations, see Sections 3 and 4.

2.3. Charge starvation during collapse

During the X-point collapse the electromagnetic fields and currents experience a sharp growth, especially near the null line. The current density at the null line grows exponentially at early times,

$$\mathbf{J} \simeq \frac{1}{2\pi} \epsilon \cosh^2 t \mathbf{e}_z \quad (2.11)$$

Since $a \rightarrow \infty$ during collapse, the current density similarly increases during the collapse. As the parameter a grows, this imposes larger and larger demand on the velocity of the current-carrying particles. But the maximum current density cannot exceed $J_z < 2en_e c$.

Thus, if

$$a(t) > \sqrt{\frac{L}{\delta}} \frac{1}{\sigma^{1/4}} \quad (2.12)$$

the current becomes charge-starved (here, $\delta = c/\omega_p$, $\omega_p^2 = 4\pi n_e e^2/m_e$ are plasma skin depth and plasma frequencies) This charge starvation lead to efficient linear particle acceleration. This is the one of the key points of the model.

The analytical estimates given above are in agreement with PIC simulations, §4. Our typical runs have $L/\delta \sim$ hundreds, while the magnetization parameter at the outer scale is $\sigma \sim$ thousands. Thus we expect that the charge starvation occurs approximately at $a \sim$ few – when the opening of the X-point becomes tens of degrees.

3. Force-free simulations

The approximate nature of the analytical solution described in the previous section invites a numerical study of the X-point collapse in the force-free approximation. To this aim we use a computer code, which solves Maxwell equations supplemented with the Ohm law

$$\mathbf{J} = \rho \frac{\mathbf{E} \times \mathbf{B}}{B^2} c + \kappa_{\parallel} \mathbf{E}_{\parallel} + \kappa_{\perp} \mathbf{E}_{\perp}. \quad (3.1)$$

In this equation, the first term represents the drift current (cf. eq.2.1), whereas the second and third terms introduce conductivity along and perpendicular to the magnetic field respectively. The parallel conductivity κ_{\parallel} is always set to a high value in order to quickly drive the solution towards the force-free state where $E_{\parallel} = 0$. The perpendicular conductivity κ_{\perp} is normally set to zero. Only when $E > B$ it is set to a high value in order to quickly obtain $E \leq B$. These two terms also introduce dissipation, which becomes significant inside current sheets. This phenomenological approach adopted from resistive MHD becomes inaccurate inside collisionless current sheets where plasma effects determine the electric current and dissipation. This becomes manifest when we compare our FF and PIC simulations. The numerical scheme is described in details in [Komissarov *et al.* \(2007\)](#). It is second order in space and time, with the source terms treated using the Strand-splitting algorithm. The method of Generalized Lagrange Multiplier (GLM) is employed to keep the magnetic field almost divergence-free.

The X-point collapse simulations are initialized with the magnetic field described by Eq. (2.7), with parameters $a = 1$, $\lambda = \sqrt{0.5}$, and vanishing electric field. In the first simulations, we focus on the time-scale corresponding to the onset of the X-point collapse, $t < 1$. We use a two-dimensional uniform Cartesian grid with 400×400 cells covering the x-y domain $[-2, 2] \times [-2, 2]$ and impose the zero-gradient boundary conditions. Such boundary conditions inevitably lead to an additional perturbation of the X-point configuration near the boundaries, which send waves propagate inside the computational domain with the speed of light. However, these waves do not reach the central area of interest, $[-1, 1] \times [-1, 1]$, on the simulation time scale. Given the rather strong initial compression of the X-point, with $\epsilon \approx 0.4$, the collapse time predicted by the theory is $t_c \approx 0.44$.

Fig. 3 shows the magnetic field lines and the strength of the guide field B_0 in the central area at four instances during the time interval $[0, 1]$. In accord with with the theory, the degree of the X-point compression increases with time and becomes visible to naked eye at $t \simeq t_c$. However, the figure also shows that on this time scale the numerical solution begins to deviate strongly from the analytical one. Indeed, the distribution of

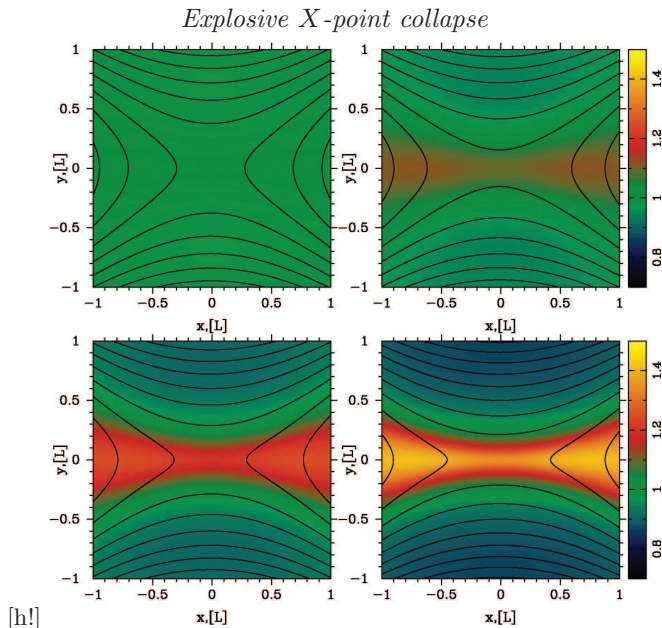


FIGURE 3. Initial phase of a solitary X-point collapse in FF simulations. The plots show B_z at $t=0.25, 0.5, 0.75$ and 1 . These plots are to be compared with Fig. 6, which shows the results of PIC simulations with the same initial setup.

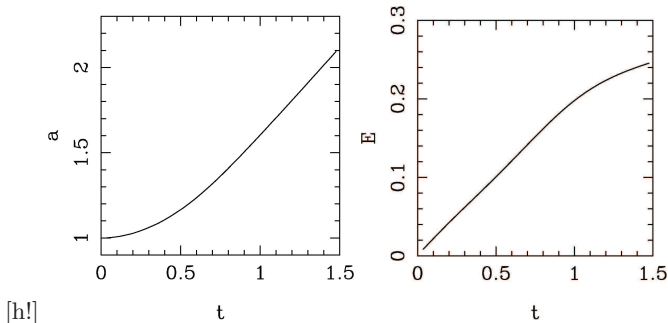


FIGURE 4. Evolution of the parameter $a(t)$ (left panel) and the total electric field strength $E(t)$ (right panel) during the initial phase. The measurements are taken at the point $(x, y) = (-0.1, 0.1)$. The analytical solution gives the collapse time $\tau = 1.0$. These results are sufficiently close, considering the fact that Eq. (2.6) was derived as an asymptotic limit near the X-point.

the guide field becomes significantly non-uniform – it gets compressed in the plane of collapse ($y = 0$).

This is confirmed in Fig. 4, which shows the evolution of the compression parameter a and the electric field strength, both computed at the point $(x, y) = (-0.1, 0.1)$. In order to measure the local value of a , we use Eq. 2.7, which yields

$$a(t) = \lambda^{1/2} (xB_x/yB_y)^{1/4}.$$

One can see that although the characteristic time scale is close to t_c , the numerical solution does not quite follow the analytical one. This is expected as the analytic solution is only accurate for $t \ll t_c$. The PIC simulations, which are described in the next section, yield very similar results.

In order to study the evolution of the X-point at $t > t_c$, we repeated the simulations on

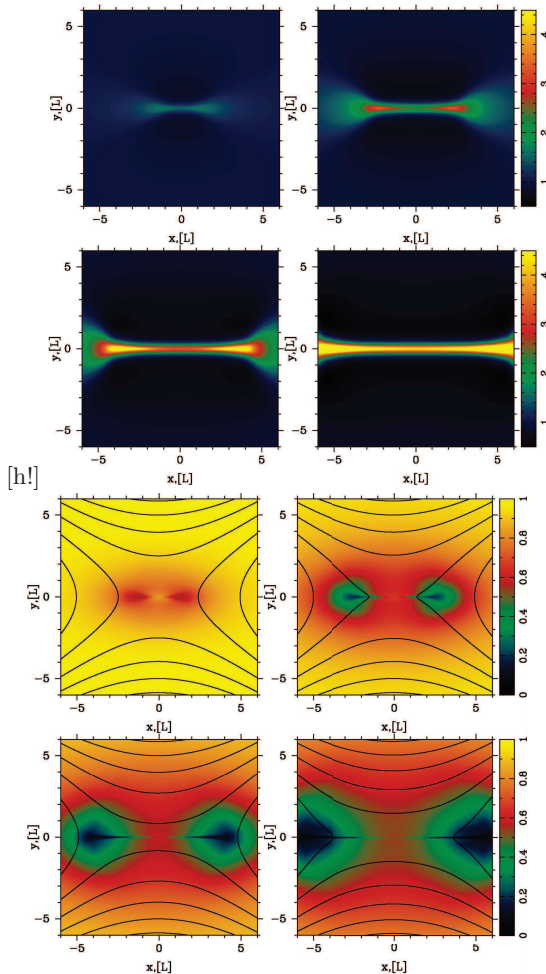


FIGURE 5. Long-term evolution of stressed solitary X-point in FF simulations. The left panel shows the B_z component of the magnetic field. The right panel shows $1 - E^2/B^2$ (colour) and magnetic field lines. The plots show the numerical solution at $t = 1.5, 3, 4.5$ and 6 . PIC simulations for the same initial configuration are shown in Figures 9 and 10.

in a larger computational domain, $[-10, 10] \times [-10, 10]$ with 800×800 cells. The results are illustrated in Fig. 5. One can see that at $t \approx t_c$ the X-point turns into a current sheet, bounded by two Y-points. The separation between these Y-points increase with approximately twice the speed of light. For $t \gg t_c$ the solution begins to exhibit a self-similar evolution, which is expected as the only characteristic length scale of this problem is $l = 1$. Ahead of each of Y-point there are bow-shaped regions where the drift speed is very close to c and $E \simeq B$. Inside the current sheet the force-free approximation breaks down completely as the electric field strength tends to exceed that of the magnetic field. Given our prescription for the resistivity some of the electromagnetic field disappears inside the current sheet without a trace. In order to capture the evolution of this current sheet properly particles must be reintroduced into the system, which done in the PIC simulations described in the next section.

4. PIC simulations

4.1. Overall principles and parameters of PIC simulations

The most fundamental method for simulating the kinetic dynamics of a reconnecting plasma involves the use of particle-in-cell (PIC) codes, that evolve the discretized equations of electrodynamics — Maxwell’s equations and the Lorentz force law (Hockney & Eastwood 1981; Birdsall & Langdon 1991). PIC codes can model astrophysical plasmas from first principles, as a collection of charged macro-particles — each representing many physical particles — that are moved by integration of the Lorentz force.† The electric currents associated with the macro-particles are deposited on a grid, where Maxwell’s equations are discretized. Electromagnetic fields are then advanced via Maxwell’s equations, with particle currents as the source term. Finally, the updated fields are extrapolated to the particle locations and used for the computation of the Lorentz force, so the loop is closed self-consistently.

We study the collapse of a solitary X-point with 2D PIC simulations, employing the massively parallel electromagnetic PIC code TRISTAN-MP (Buneman 1993; Spitkovsky 2005). Our computational domain is a square in the x – y plane, which is initialized with a uniform density of cold electron-positron plasma (the composition of pulsar wind nebulae is inferred to have negligible ion/proton component). The simulation is initialized with a vanishing electric field and with the magnetic field appropriate for a stressed X-point collapse (see Eq. (2.7)) with $\lambda = 1/\sqrt{2}$, for direct comparison with the force-free results described above.‡ The stressed X-point configuration would require a particle current in the direction perpendicular to the simulation plane, to sustain the curl of the field (which, on the other hand, is absent in the case of an unstressed X-point). In our setup, the computational particles are initialized at rest, but such electric current gets self-consistently built up within a few timesteps. At the boundaries of the box, the field is reset at every timestep to the initial configuration. This leads to an artificial deformation of the self-consistent X-point evolution which propagates from the boundaries toward the center at the speed of light. However, our domain is chosen to be large enough such that this perturbation does not reach the central area of interest within the timespan covered by our simulations.

We perform two sets of simulations. First, we explore the physics at relatively early times with a 2D Cartesian grid of 32768×32768 cells. The spatial resolution is such that the plasma skin depth c/ω_p is resolved with 10 cells.¶ The unit length is $L = 800 c/\omega_p$, so that the domain size is a square with $\simeq 4L$ on each side. The physical region of interest is the central $2L \times 2L$ square. The simulation is evolved up to $\sim L/c$, so that the artificial perturbation driven by the boundaries does not affect the region of interest. In a second set of simulations, we explore the physics at late times, with a 2D Cartesian box of 40960×40960 cells, with spatial resolution $c/\omega_p = 1.25$ cells. With the unit length still being $L = 800 c/\omega_p$, the overall system is a square of $\simeq 41L$ on each side. At early times, the evolution is entirely consistent with the results of the first set of simulations described above, which suggests that a spatial resolution of $c/\omega_p = 1.25$ cells is still

† For this work, we employ the Vay pusher, since we find that it is more accurate than the standard Boris algorithm in dealing with the relativistic drift velocities associated with the reconnection flows (Vay 2008).

‡ We have also explicitly verified that an unstressed X-point (i.e., with $\lambda = 1$) is stable, Appendix A.

¶ In the case of a cold plasma, the skin depth is defined as $c/\omega_p = \sqrt{mc^2/4\pi ne^2}$. For a hot plasma, it is defined as $c/\omega_p = \sqrt{mc^2[1 + (\hat{\gamma} - 1)^{-1}kT/mc^2]/4\pi ne^2}$, where $\hat{\gamma}$ is the adiabatic index.

sufficient to capture the relevant physics (more generally, we have checked for numerical convergence from $c/\omega_p = 1.25$ cells up to $c/\omega_p = 20$ cells). We follow the large-scale system up to $\sim 6L/c$, so that the evolution of the physical region at the center stays unaffected by the boundary conditions.

For both sets of simulations, each cell is initialized with two macro-positrons and two macro-electrons (with a small thermal dispersion of $kT/mc^2 = 10^{-4}$). Hence the initial plasma density distribution is uniform, whereas the magnetic field is not. This leads to a non-uniform magnetization, which increases with the distance from the centre line of the X-point. We have checked that our results are the same when using up to 24 particles per cell. In order to reduce noise in the simulation, we filter the electric current deposited onto the grid by the particles, effectively mimicking the effect of a larger number of particles per cell (Spitkovsky 2005; Belyaev 2015).

We explore the dependence of our results on two physical parameters, namely the strength of the guide field and the flow magnetization. In the simulations with guide field, the guide field is initially uniform and its strength is chosen to be equal to that of the unstressed in-plane field of the X-point at the unit distance from the origin. This case allows for a direct comparison with analytical theory and force-free results. We also studied the case without a guide field. This case will be relevant for our investigation of the collapse of ABC structures, considered in the second paper of this series. There, we will demonstrate that particle acceleration is most efficient at null points, i.e., where both the in-plane fields and the out-of-plane guide field vanish.

In addition to the guide field strength, we investigate the dependence of our results on the flow magnetization, which for a cold electron-positron plasma reduces to $\sigma = B^2/4\pi mnc^2$. The physics of X-point collapse has been widely studied in the literature with PIC simulations (Tsiklauri & Haruki 2007, 2008; Graf von der Pahlen & Tsiklauri 2014; von der Pahlen & Tsiklauri 2014), but only in the non-relativistic regime $\sigma \ll 1$. To the best of our knowledge, our investigation is the first to focus on the relativistic regime $\sigma \gg 1$, which is appropriate for relativistic astrophysical outflows. Since the in-plane field of the initial configuration grows linearly with distance from the centre line and the plasma density is uniform, the corresponding magnetization increases quadratically with the distance in the case without guide field and somewhat slower when the guide field is included. For definiteness, we opted to parametrise our runs via the initial value σ_L of plasma magnetization at the unit distance L from the origin (along the unstressed x direction), measured only with the in-plane fields (so, excluding the guide field). We explore three values of σ_L : 4×10^2 , 4×10^3 and 4×10^4 .

4.2. Stressed X-point collapse with guide field

Figure 6 shows the initial phase ($ct/L \leq 1$) of the collapse of a solitary X-point in PIC simulations with $\lambda = 1/\sqrt{2}$ and with guide field, for two different magnetizations: $\sigma_L = 4 \times 10^3$ (left) and $\sigma_L = 4 \times 10^4$ (right). The expected rapid collapse of the squeezed X-point is clearly visible, and in excellent agreement with the 2D results of force-free simulations, as shown in Fig. 3. The out-of-plane magnetic field B_z is compressed toward the $y = 0$ plane, in agreement with the force-free results, but in apparent contradiction with the analytical solution, that assumed no evolution of the guide field. The 2D pattern of B_z in PIC simulations is remarkably independent of the magnetization (compare left and right), for the early phases presented in Fig. 6.

The fact that PIC results at early times are independent of σ_L is further illustrated in Fig. 7, where we present the temporal evolution of various quantities for three values of the magnetization: $\sigma_L = 4 \times 10^2$ (blue), $\sigma_L = 4 \times 10^3$ (green) and $\sigma_L = 4 \times 10^4$ (red). Both the value of $a(t) = \lambda^{1/2}(B_x/B_y)^{1/4}$ and of the electric field $E(t)$ (in units

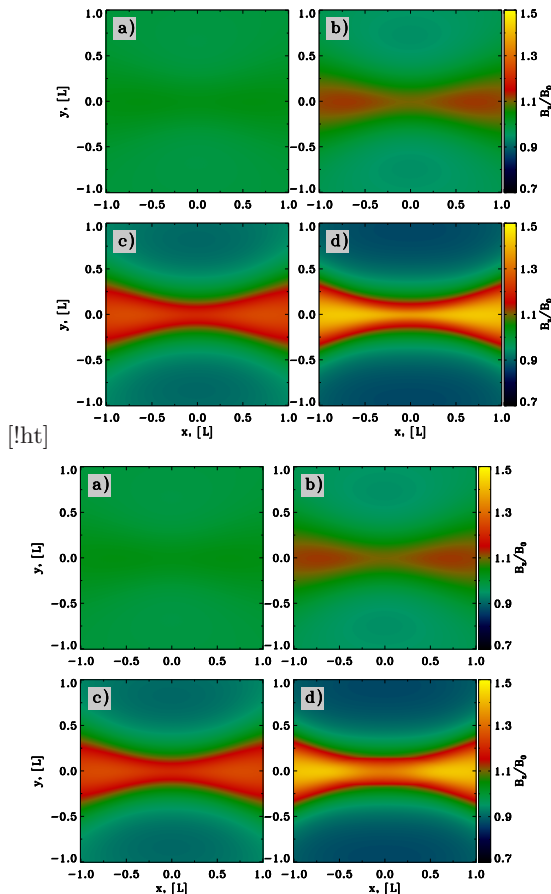


FIGURE 6. Initial phase of an X-point collapse in PIC simulations with guide field, for two different magnetizations: $\sigma_L = 4 \times 10^3$ (left) and $\sigma_L = 4 \times 10^4$ (right). The plots show the out-of-plane field B_z at $ct/L = 0.25, 0.5, 0.75$ and 1 , from panel (a) to (d). This figure corresponds to Fig. 3, which shows the results of force-free simulations.

of B_0) at the location $(-0.1L, 0.1L)$ are independent of σ_L , as long as $ct/L \lesssim 1$, and they are in excellent agreement with the results of force-free simulations presented in Fig. 4. In other words, the physics at early times is entirely regulated by large-scale electromagnetic stresses, with no appreciable particle kinetic effects. Carried along by the converging magnetic fields of the collapsing X-point, particles are flowing into the central region, with a reconnection speed of $\sim 0.2c$ (averaged over a square of side equal to L around the center). This is significantly higher compared to the typical reconnection rate for a plane current sheet configuration. For a relativistic current sheet with guide field of the same strength as the alternating field, the reconnection rate is only $v_{\text{rec}}/c \sim 0.02$ (Sironi & Spitkovsky 2017, in prep.).[†]

We have argued in Sec.2 that as the system evolves and the $a(t)$ parameter increases,

[†] Liu *et al.* (2015) report a significantly higher reconnection rate. However, their results are consistent with the findings in Sironi & Spitkovsky 2017, in prep.). The apparent disagreement is due to the fact that Liu *et al.* (2015) measured the reconnection rate on the microscopic skin-depth scales, whereas Sironi & Spitkovsky (2017) on macroscopic scales. Similarly, in the present paper the scale of measurement $L \gg c/\omega_p$ is macroscopic.

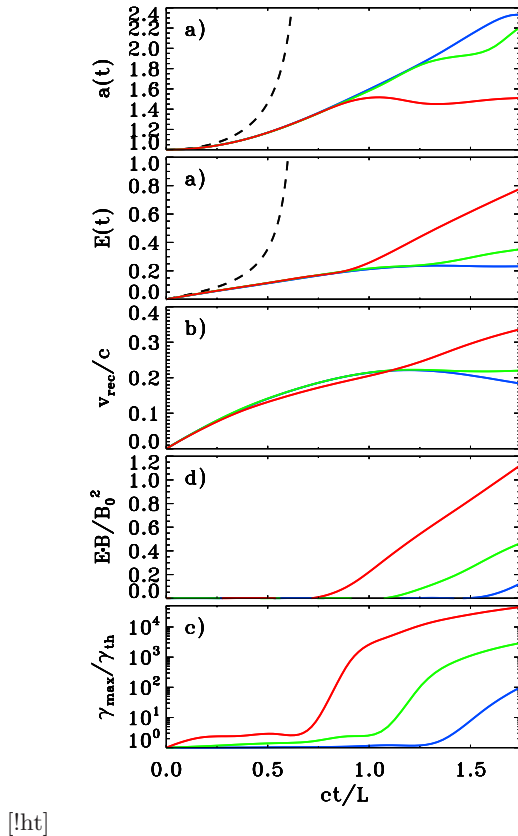


FIGURE 7. Temporal evolution of various quantities from PIC simulations of an X-point collapse with guide field, for three values of the magnetization: $\sigma_L = 4 \times 10^2$ (blue), $\sigma_L = 4 \times 10^3$ (green) and $\sigma_L = 4 \times 10^4$ (red). As a function of time, we plot: (a) the value of $a(t) = \lambda^{1/2}(B_x/B_y)^{1/4}$ at the location $(-0.1L, 0.1L)$, to be compared with the result of force-free simulations in the left panel of Fig. 4 and with the analytical estimates (dashed line); (b) the value of the electric field strength $E(t)$ at the location $(-0.1L, 0.1L)$ in units of B_0 , to be compared with the result of force-free simulations in the right panel of Fig. 4 and with the analytical estimates (dashed line); (c), the reconnection rate, defined as the inflow speed along the y direction averaged over a square of side equal to L around the central region; (d) the parameter $\mathbf{E} \cdot \mathbf{B}/B_0^2$ at the center of the domain, which explicitly shows when the force-free condition $\mathbf{E} \cdot \mathbf{B} = 0$ is broken; (e) the maximum particle Lorentz factor γ_{\max} (as defined in Eq. (4.1)), in units of the thermal value $\gamma_{\text{th}} \simeq 1 + (\hat{\gamma} - 1)^{-1}kT/mc^2$, which in this case of a cold plasma reduces to $\gamma_{\text{th}} \simeq 1$.

the electric current may become charge-starved. In Fig. 7, this is clearly indicated by the time when the force-free condition $\mathbf{E} \cdot \mathbf{B} = 0$ is violated, as shown in panel (d). Higher values of σ_L lead to an earlier onset of charge starvation: the simulation with $\sigma_L = 4 \times 10^4$ becomes charge starved at $ct/L \simeq 0.75$, the simulation with $\sigma_L = 4 \times 10^3$ at $ct/L \simeq 1.1$ and the simulation with $\sigma_L = 4 \times 10^2$ at $ct/L \simeq 1.5$. This is expected as higher σ corresponds to fewer available charges. The onset of charge starvation is accompanied by a deviation of the curves in panels (a) and (b) from the results of force-free simulations, where the condition $\mathbf{E} \cdot \mathbf{B} = 0$ is imposed by hand at all times.

The physics of charge starvation is illustrated in Fig. 8, for the case $\sigma_L = 4 \times 10^4$ that corresponds to the red curves in Fig. 7. In response to the rapidly increasing curl of the magnetic field, the z velocity of the charge carriers has to increase (Fig. 8(a), for

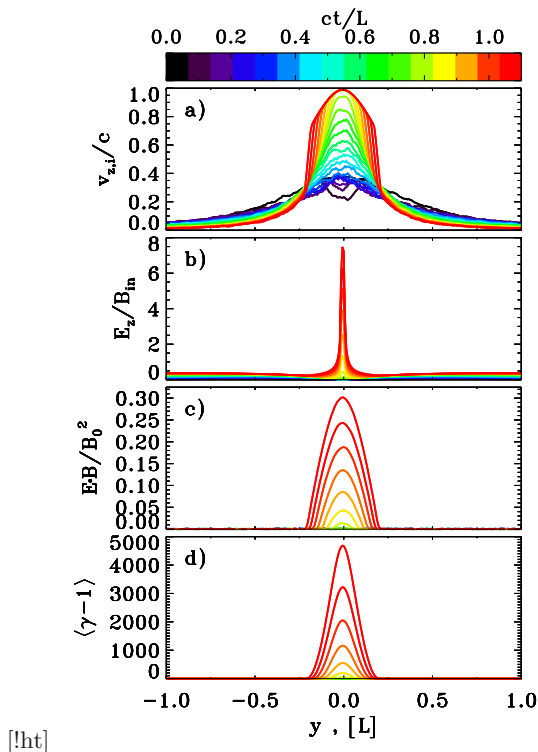


FIGURE 8. Spatial profiles of various quantities from a PIC simulation of an X-point collapse with guide field and magnetization $\sigma_L = 4 \times 10^4$, which corresponds to the red curves in Fig. 7. As a function of the coordinate y along the inflow direction, we plot at $x = 0$: (a) the bulk speed of positrons, in units of the speed of light (the bulk speed of electrons is equal and opposite); (b) the ratio of the out-of-plane electric field E_z to the in-plane magnetic field $B_{in} = \sqrt{B_x^2 + B_y^2}$; (c) the parameter $\mathbf{E} \cdot \mathbf{B}/B_0^2$, which explicitly shows when the force-free condition $\mathbf{E} \cdot \mathbf{B} = 0$ is falsified; (d) the mean particle Lorentz factor.

positrons), while their density stays nearly unchanged. When the drifting speed reaches the speed of light, at $ct/L \simeq 0.8$ in Fig. 8(a), the particle electric current cannot sustain the curl of the magnetic field any longer and the displacement current takes over. As a result, the electric field grows to violate the force-free condition $\mathbf{E} \cdot \mathbf{B} = 0$. In fact, panel (c) shows that the value of $\mathbf{E} \cdot \mathbf{B}$ departs from zero at $ct/L \simeq 0.8$, i.e., right when the particle drift velocity approaches the speed of light. The nonzero $\mathbf{E} \cdot \mathbf{B}$ triggers the onset of efficient particle acceleration, as shown by the profile of the mean particle Lorentz factor in panel (d). Indeed, the locations of efficient particle acceleration (i.e., where $\langle \gamma \rangle \gg 1$) are spatially coincident with the regions where $\mathbf{E} \cdot \mathbf{B} \neq 0$. There, the pressure of accelerated particles provides a significant back-reaction onto the field collapse, and the agreement with the force-free results necessarily fails.

After the onset of charge starvation, the maximum particle energy dramatically increases (see Fig. 7(e)). It is this period of rapid acceleration that will be extensively studied in the following sections. Here, and hereafter, the maximum particle Lorentz factor plotted in Fig. 7(e) is defined as

$$\gamma_{\max} = \frac{\int \gamma^{n_{\text{cut}}} dN/d\gamma d\gamma}{\int \gamma^{n_{\text{cut}}-1} dN/d\gamma d\gamma} \quad (4.1)$$

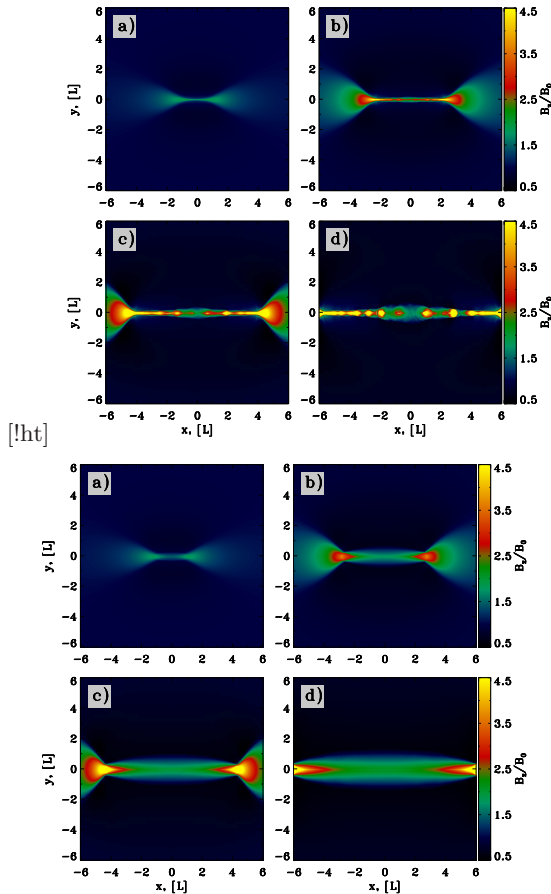


FIGURE 9. Late time evolution of the X-point collapse in PIC simulations with guide field, for two different magnetizations: $\sigma_L = 4 \times 10^3$ (left) and $\sigma_L = 4 \times 10^4$ (right). The plots show the out-of-plane field at $ct/L = 1.5, 3, 4.5, 6$, from panel (a) to (d). This figure corresponds to the left side of Fig. 5, which shows the results of force-free simulations.

where n_{cut} is empirically chosen to be $n_{\text{cut}} = 6$ (see also [Bai et al. 2015](#)). If the particle energy spectrum takes the form $dN/d\gamma \propto \gamma^{-s} \exp(-\gamma/\gamma_{\text{cut}})$ with power-law slope s and exponential cutoff at γ_{cut} , then our definition yields $\gamma_{\text{max}} \sim (n_{\text{cut}} - s) \gamma_{\text{cut}}$.

As the collapse proceeds beyond $ct/L \sim 1$, the system approaches a self-similar evolution, as we have already emphasized for our force-free simulations (see Fig. 5). As shown in Fig. 9, the X-point evolves into a thin current sheet with two Y-points at its ends, which move with speed very close to the speed of light. The current sheet is supported by the pressure of the compressed guide field (as it is apparent in Fig. 9) and by the kinetic pressure of the accelerated particles. As illustrated in Fig. 9, the current sheet is thinner for lower magnetizations, at fixed $L/c/\omega_p$ (compare $\sigma_L = 4 \times 10^3$ on the left and $\sigma_L = 4 \times 10^4$ on the right). Roughly, the thickness of the current sheet at this stage is set by the Larmor radius $r_{L,\text{hot}} = \sqrt{\sigma_L} c/\omega_p$ of the high-energy particles heated/accelerated by reconnection, which explains the variation of the current sheet thickness with σ_L in Fig. 9. A long thin current sheet is expected to fragment into a chain of plasmoids/magnetic islands (e.g., [Uzdensky et al. 2010](#)), when the length-to-thickness ratio is much larger than unity. At fixed time and hence similar sheet length, it is then

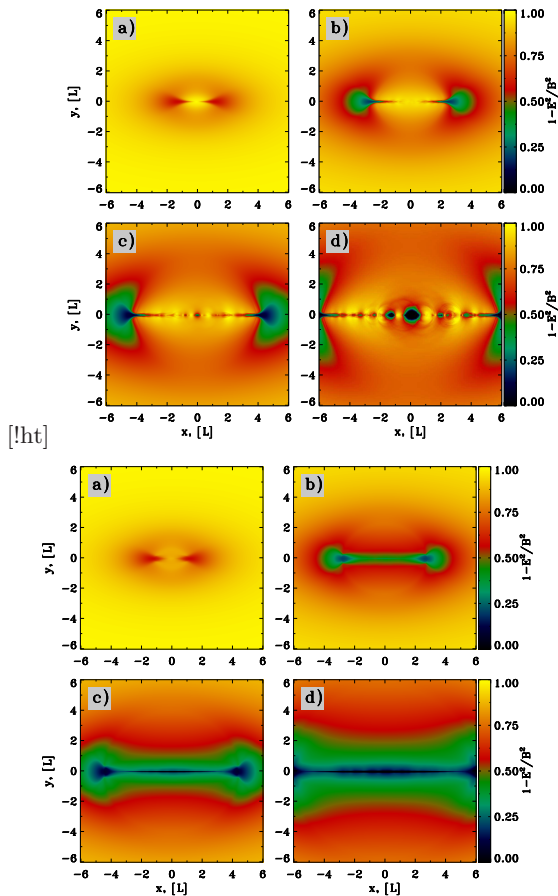


FIGURE 10. Late time evolution of the X-point collapse in PIC simulations with guide field, for two different magnetizations: $\sigma_L = 4 \times 10^3$ (left) and $\sigma_L = 4 \times 10^4$ (right). The plots show the quantity $1 - E^2/B^2$ at $ct/L = 1.5, 3, 4.5, 6$, from panel (a) to (d) (strictly speaking, we plot $\max[0, 1 - E^2/B^2]$, for direct comparison with force-free simulations, that implicitly constrain $E \leq B$). This figure corresponds to the right side of Fig. 5, which shows the results of force-free simulations.

more likely that the fragmentation into plasmoids appears at lower magnetizations, since a lower σ_L results in a thinner current sheet. This is in agreement with Fig. 9, and we have further checked that the current sheet in the simulation with $\sigma_L = 4 \times 10^2$ starts fragmenting at even earlier times.

In the small-scale X-points in between the self-generated plasmoids, the electric field can approach and exceed the magnetic field. This is apparent in Fig. 10 — referring to the same simulations as in Fig. 9 — where we show the value of $1 - E^2/B^2$, which quantifies the strength of the electric field relative to the magnetic field. In the case of $\sigma_L = 4 \times 10^3$ (left side), the *microscopic* regions in between the plasmoids are characterized by $E > B$ (see, e.g., at the center of panel (d)). In addition, ahead of each of the two Y-points, a bow-shaped area exists where $E \sim B$ (e.g., at $|x| \sim 5L$ and $y \sim 0$ in panel (c)). The two Y-points move at the Alfvén speed, which is comparable to the speed of light for our $\sigma_L \gg 1$ plasma. So, the fact that $E \sim B$ ahead of the Y-points is just a manifestation of the relativistic nature of the reconnection outflows. For $\sigma_L = 4 \times 10^3$ (left side in Fig. 10), the electric energy in the bulk of the inflow region is much smaller than the magnetic

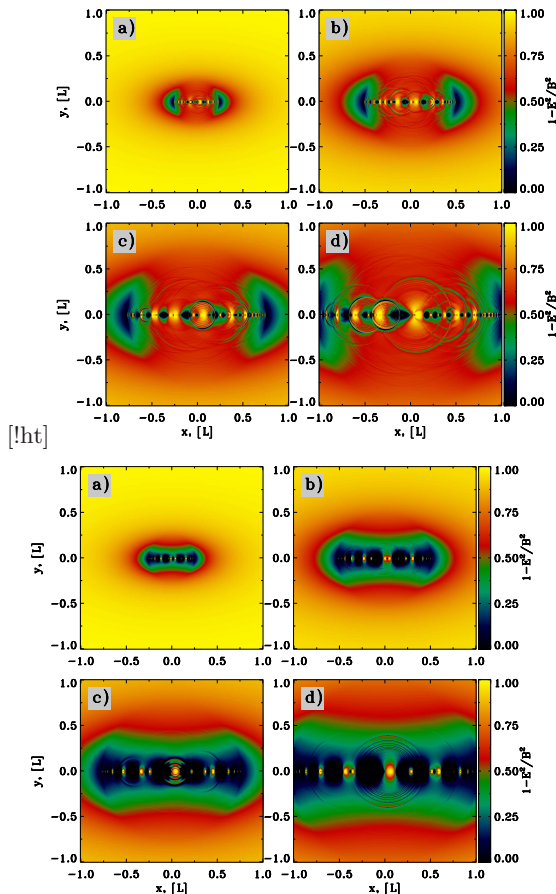


FIGURE 11. Initial phase of a solitary X-point collapse in PIC simulations with zero guide field, for two different magnetizations: $\sigma_L = 4 \times 10^3$ (left) and $\sigma_L = 4 \times 10^4$ (right). The plots show the quantity $1 - E^2/B^2$ (strictly speaking, we plot $\max[0, 1 - E^2/B^2]$) at $ct/L = 0.25, 0.5, 0.75$ and 1, from panel (a) to (d).

energy, corresponding to $1 - E^2/B^2 \sim 0.6$. Or equivalently, the reconnection speed is significantly smaller than the speed of light. The highly relativistic case of $\sigma_L = 4 \times 10^4$ (right panel in Fig. 10) shows a different picture. Here, a large volume with $E \sim B$ develops in the inflow region. In other words, the reconnection speed approaches the speed of light in a *macroscopic* region. In the next subsection, we will show that an inflow speed near the speed of light (or equivalently, $E \sim B$) is a generic by-product of high- σ_L reconnection.†

4.3. Stressed X-point collapse without guide field

Figure 11 shows the initial phase ($ct/L \leq 1$) of the collapse of an X-point in PIC simulations with $\lambda = 1/\sqrt{2}$ and with zero guide field, for two different magnetizations:

† In retrospect, the fact that this conclusion also holds for the case of guide-field X-point collapse is not surprising. At the initial time, only the region within a radius $\lesssim L$ from the current sheet has a guide field stronger than the in-plane fields. This implies that at late times, when regions initially at a distance $\gtrsim L$ are eventually advected to the center, the guide field at the current sheet will be sub-dominant with respect to the in-plane fields, so that the results of guide-field reconnection will resemble the case of a vanishing guide field.

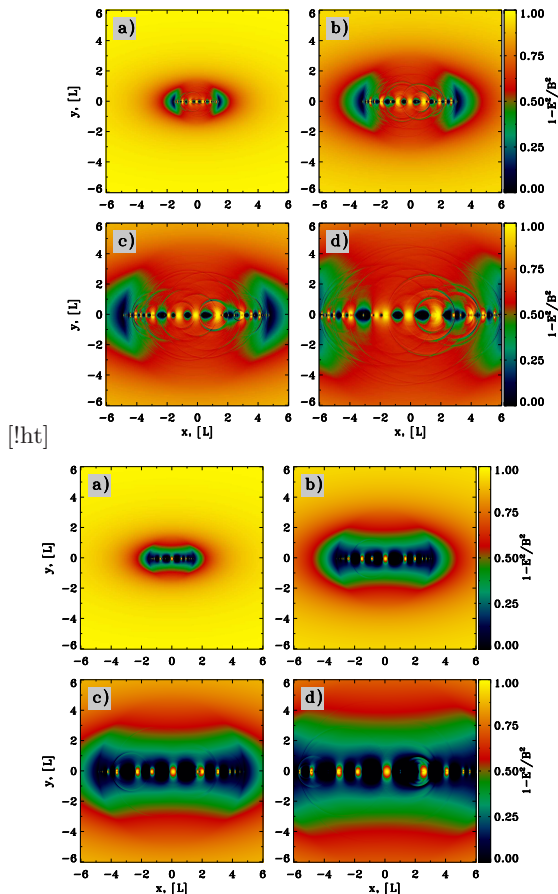


FIGURE 12. Late time evolution of the X-point collapse in PIC simulations with zero guide field, for two different magnetizations: $\sigma_L = 4 \times 10^3$ (left) and $\sigma_L = 4 \times 10^4$ (right). The plots show the quantity $1 - E^2/B^2$ (strictly speaking, we plot $\max[0, 1 - E^2/B^2]$) at $ct/L = 1.5, 3, 4.5, 6$, from panel (a) to (d).

$\sigma_L = 4 \times 10^3$ (left) and $\sigma_L = 4 \times 10^4$ (right). We plot the quantity $1 - E^2/B^2$ (more precisely, we present $\max[0, 1 - E^2/B^2]$), in order to identify the regions where the electric field is comparable to the magnetic field (green or blue areas in the plot). For both $\sigma_L = 4 \times 10^3$ (left) and $\sigma_L = 4 \times 10^4$ (right), the current sheet is subject to copious fragmentation into plasmoids since early times, in contrast with the guide-field case (compare with Fig. 6). There, the current sheet was supported by the pressure of the compressed guide field, and therefore its thickness was larger, making it less prone to fragmentation (at a fixed time ct/L). In addition, a comparison of Fig. 11, which refers to early times (up to $ct/L = 1$), with Fig. 12, that follows the system up to $ct/L = 6$, shows the remarkable self-similarity of the evolution, for both magnetizations. First, the macroscopic distribution of E^2/B^2 (and hence that of the drift velocity) at later times is a scaled copy of that at previous times, with the overall length scale increasing linearly with time (at the speed of light). This implies that the reconnection rate over the whole configurations remains fixed in time, as we indeed confirm below. Second, the size of the largest plasmoids generated in the current sheet is also a fixed fraction of the overall scale, ~ 0.1 of the current sheet length.

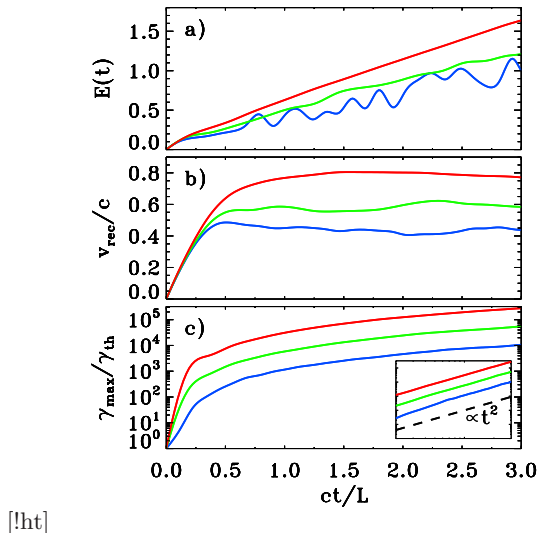


FIGURE 13. Temporal evolution of various quantities from PIC simulations of solitary X-point collapse with zero guide field, for three values of the magnetization: $\sigma_L = 4 \times 10^2$ (blue), $\sigma_L = 4 \times 10^3$ (green) and $\sigma_L = 4 \times 10^4$ (red). The corresponding plot for the case of nonzero guide field is in Fig. 7. As a function of time, we plot: (a) the value of the electric field strength $E(t)$ at the location $(-0.1L, 0.1L)$ in units of the initial magnetic field at $x = L$; (b), the reconnection rate, defined as the inflow speed along the y direction averaged over a square of side equal to L around the central region; (c) the maximum particle Lorentz factor γ_{\max} (as defined in Eq. (4.1)), in units of the thermal value $\gamma_{\text{th}} \simeq 1 + (\hat{\gamma} - 1)^{-1} kT/mc^2$, which in this case of a cold plasma reduces to $\gamma_{\text{th}} \simeq 1$; the inset in panel (c) shows the same quantity on a double logarithmic scale, demonstrating that $\gamma_{\max} \propto t^2$ (black dashed line).

In Figs. 11 and 12, the plasmoids generated by the secondary tearing instability (Uzdensky *et al.* 2010) appear as yellow structures, i.e., with magnetic energy much larger than the electric energy. In contrast, the region in between each pair of plasmoids harbors a *microscopic* X-point, where the electric field can exceed the magnetic field. The size of these microscopic X-points is controlled by plasma kinetics, in contrast to the original macroscopic X-point. They play a major role for particle injection into the acceleration process, as we argue in the next subsection.

As observed in the case of guide-field collapse, the two bow-shaped regions ahead of the Y-points (to the left and to the right of the reconnection layer) are moving relativistically, yielding $E \sim B$ (green and blue colors in the figures). In addition, in the high-magnetization case $\sigma_L = 4 \times 10^4$ (right side of Figs. 11 and 12), a *macroscopic* region appears in the bulk inflow where the electric field is comparable to the magnetic field. Here, the inflow rate approaches the speed of light, as we have already described in the case of guide-field reconnection (right side of Fig. 10).

This is further illustrated in Fig. 13, where we present the temporal evolution of various quantities, from a suite of PIC simulations of X-point collapse with vanishing guide field, having three different magnetizations: $\sigma_L = 4 \times 10^2$ (blue), $\sigma_L = 4 \times 10^3$ (green) and $\sigma_L = 4 \times 10^4$ (red). The reconnection rate v_{rec}/c (panel (b)), which is measured as the inflow speed averaged over a *macroscopic* square of side equal to L centered at $x = y = 0$, shows in the asymptotic state (i.e., at $ct/L \gtrsim 0.5$) a clear dependence on σ_L , reaching $v_{\text{rec}}/c \sim 0.8$ for our high-magnetization case $\sigma_L = 4 \times 10^4$ (red). This trend has already been described by Liu *et al.* (2015). The critical difference, though, is that their

measurement was performed on *microscopic* skin-depth scales, whereas our results show that reconnection velocities near the speed of light can be achieved over *macroscopic* scales $L \gg c/\omega_p$. In addition, such inflow speed is significantly larger than what is measured on macroscopic scales in the case of plane-parallel steady-state reconnection, where the reconnection rate typically approaches $v_{\text{rec}}/c \sim 0.2$ in the high-magnetization limit (Sironi & Spitkovsky 2014; Guo *et al.* 2015).

The dependence of the reconnection speed on σ_L is also revealed in Fig. 13(a), where we present the temporal evolution of the electric field $E(t)$ measured at $(x, y) = (-0.1L, 0.1L)$, in units of the initial magnetic field at $x = L$. The variation in slope in Fig. 13(a) is indeed driven by the different reconnection speeds, since $E \sim v_{\text{rec}}B/c$ in the inflow region.

Interestingly, the electric field increases linearly with time. This is ultimately a manifestation of the self-similar macroscopic evolution of the system. Indeed, since in the initial configuration the magnetic field strength grows linearly with distance from the origin (i.e., the center of the X-point) and the current sheet size grows linearly with time, the mean magnetic and electric fields in the volume surrounding the current sheet must also grow linearly, with their scaled distributions unchanged. The temporal evolution of the electric field has a direct impact on the maximum particle energy, which is shown in Fig. 13(c). Quite generally, its time evolution will be

$$\gamma_{\text{max}} \propto Et \propto v_{\text{rec}}Bt \quad (4.2)$$

Since both E and B in the reconnection region are scaling linearly with time (see Fig. 13(a)), one expects $\gamma_{\text{max}} \propto t^2$, as indeed confirmed by the inset of panel (c) (compare with the dashed black line). This scaling is faster than in plane-parallel steady-state reconnection, where $E(t)$ is constant in time, leading to $\gamma_{\text{max}} \propto t$. From the scaling in Eq. (4.2), one can understand the different normalizations of the curves in Fig. 13(c). Since $B \propto \sqrt{\sigma_L}$ we find that at fixed time

$$\gamma_{\text{max}} \propto v_{\text{rec}}\sqrt{\sigma_L}$$

and hence it grows with the magnetization. We find that for the model with $\sigma_L = 4 \times 10^4$ the reconnection rate is about twice that of the model with $\sigma_L = 4 \times 10^2$ (panel (b) in Fig. 13) and hence γ_{max} should be 20 times higher. This is in excellent agreement with the data in Fig. 13(c) (compare blue and red curves).

4.4. Particle acceleration and emission signatures

In this section, we explore the physics of particle acceleration in a stressed X-point collapse with vanishing guide field, and we present the resulting particle distribution and synchrotron emission spectrum. In Fig. 14, we follow the trajectories of a number of particles in a simulation with $\sigma_L = 4 \times 10^2$. The particles are selected such that their Lorentz factor exceeds a given threshold $\gamma_0 = 30$ within the time interval $1.4 \leq ct_0/L \leq 1.7$, as indicated by the vertical dashed lines in the top panel. The temporal evolution of the Lorentz factor of such particles, presented in the top panel for the 30 positrons reaching the highest energies, follows the track $\gamma \propto t^2 - t_0^2$ that is expected from $d\gamma/dt \propto E(t) \propto t$. Here, t_0 is the injection time, when the particle Lorentz factor γ first exceeds the threshold γ_0 . The individual histories of single positrons might differ substantially, but overall the top panel of Fig. 14 suggests that the acceleration process is dominated by direct acceleration by the reconnection electric field, as indeed it is expected for our configuration of a large-scale stressed X-point (see Sironi & Spitkovsky 2014; Guo *et al.* 2015; Nalewajko *et al.* 2015, for a discussion of acceleration mechanisms in plane-parallel reconnection). We find that the particles presented in the top panel of

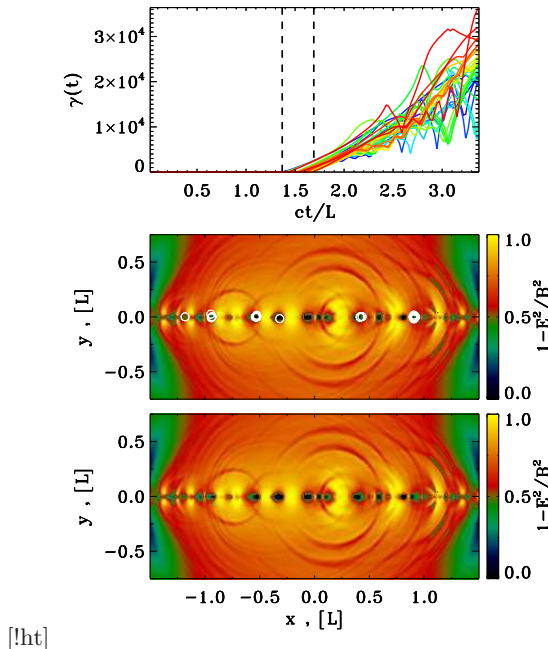
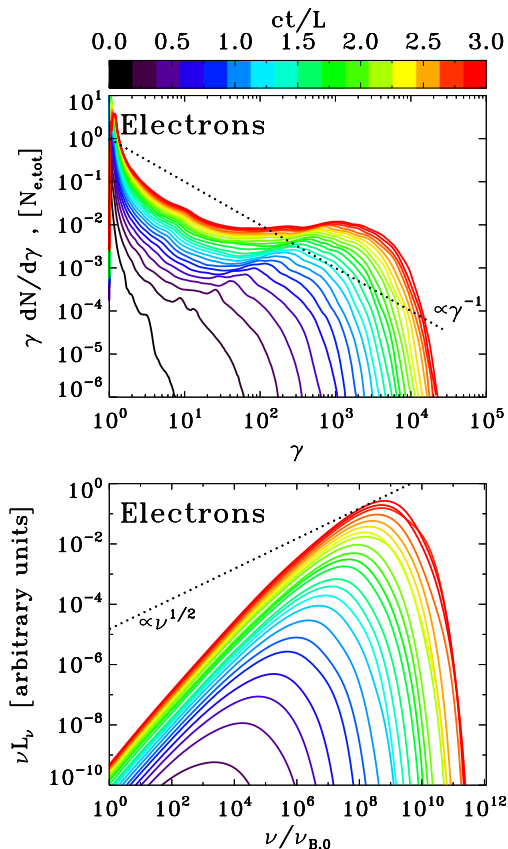


FIGURE 14. Physics of particle injection into the acceleration process, from a PIC simulation of stressed X-point collapse with vanishing guide field and $\sigma_L = 4 \times 10^2$. Top panel: we select all the particles that exceed the threshold $\gamma_0 = 30$ within a given time interval (chosen to be $1.4 \leq ct_0/L \leq 1.7$, as indicated by the vertical dashed lines), and we plot the temporal evolution of the Lorentz factor of the 30 particles that at the final time reach the highest energies. The particle Lorentz factor increases as $\gamma \propto t^2 - t_0^2$, where t_0 marks the onset of acceleration (i.e., the time when γ first exceeds γ_0). Middle panel: for the same particles as in the top panel, we plot their locations at the onset of acceleration with open white circles, superimposed over the 2D plot of $1 - E^2/B^2$ (more precisely, of $\max[0, 1 - E^2/B^2]$) at $ct/L = 1.55$. Comparison of the middle panel with the bottom panel shows that particle injection is localized in the vicinity of the X-points in the current sheet (i.e., the blue regions where $E > B$).

Fig. 14 are too energetic to be confined within the small-scale plasmoids in the current sheet, so any acceleration mechanism that relies on plasmoid mergers is found to be unimportant, in our setup.

Particle injection into the acceleration process happens in the charge-starved regions where $E > B$, i.e., in the small-scale X-points that separate each pair of secondary plasmoids in the current sheet. Indeed, for the same particles as in the top panel, the middle panel in Fig. 14 presents their locations at the onset of acceleration with open white circles, superimposed over the 2D plot of $1 - E^2/B^2$ (more precisely, of $\max[0, 1 - E^2/B^2]$). Comparison of the middle panel with the bottom panel shows that particle injection is localized in the vicinity of the small-scale X-points in the current sheet (i.e., the blue regions where $E > B$). Despite occupying a relatively small fraction of the overall volume, such regions are of paramount importance for particle acceleration.

The temporal evolution of the electron energy spectrum is presented in the top panel of Fig. 15, for a simulation with $\sigma_L = 4 \times 10^2$. As the spectral cutoff grows as $\gamma_{\max} \propto t^2$ (see also the inset in Fig. 13(c)), the spectrum approaches a hard power law $\gamma dN/d\gamma \propto \text{const}$. The measured spectral slope is consistent with the asymptotic power-law index obtained in the limit of high magnetizations from PIC simulations of relativistic plane-parallel reconnection (Sironi & Spitkovsky 2014; Guo *et al.* 2015; Werner *et al.*



[!ht]

FIGURE 15. Particle energy spectrum and synchrotron spectrum from a PIC simulation of stressed X-point collapse with vanishing guide field and $\sigma_L = 4 \times 10^2$. Time is measured in units of L/c , see the colorbar at the top. Top panel: evolution of the electron energy spectrum normalized to the total number of electrons. At late times, the spectrum approaches a hard distribution $\gamma dN/d\gamma \propto \text{const}$, much harder than the dotted line, which shows the case $\gamma dN/d\gamma \propto \gamma^{-1}$ corresponding to equal energy content in each decade of γ . Bottom panel: evolution of the angle-averaged synchrotron spectrum emitted by electrons. The frequency on the horizontal axis is in units of $\nu_{B,0} = \sqrt{\sigma_L} \omega_p / 2\pi$. At late times, the synchrotron spectrum approaches a power law with $\nu L_\nu \propto \nu$, which just follows from the fact that the electron spectrum is $\gamma dN/d\gamma \propto \text{const}$. This is much harder than the dotted line, which indicates the slope $\nu L_\nu \propto \nu^{1/2}$ resulting from an electron spectrum $\gamma dN/d\gamma \propto \gamma^{-1}$ (dotted line in the top panel).

2016). Due to energy conservation, such hard slopes would not allow the spectrum to extend much beyond the instantaneous value of the magnetization just upstream of the current sheet (as we have explained before, in our setup the magnetization at the current sheet increases quadratically with time, since $B(t) \propto t$), in line with the arguments of Sironi & Spitkovsky (2014) and Werner *et al.* (2016).

However, we find evidence for a possible solution of this “energy crisis.” In Fig. 17, we explore the dependence of the particle energy spectrum on the magnetization at $ct/L = 1.8$, in the case of vanishing guide field. We find that at high σ_L the population of accelerated particles is composed of two components, separated by a break energy (for the red solid curve corresponding to $\sigma_L = 4 \times 10^4$ in Fig. 17, the break occurs at a Lorentz factor $\gamma \sim 200$): a low-energy soft component, whose spectral slope is slightly

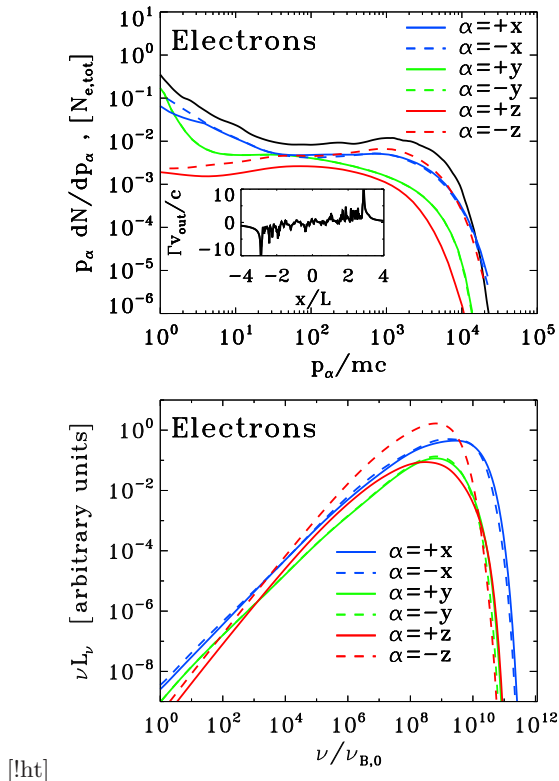


FIGURE 16. Particle momentum spectrum and anisotropy of the synchrotron spectrum from a PIC simulation of stressed X-point collapse with vanishing guide field and $\sigma_L = 4 \times 10^2$. Top panel: electron momentum spectrum at the final time $ct/L = 3$ along different directions, as indicated in the legend. The total momentum spectrum (i.e., independent of direction) is indicated with a solid black line for comparison. The highest energy electrons are beamed along the direction x of the reconnection outflow (blue lines) and along the direction $-z$ of the accelerating electric field (red dashed line; positrons will be beamed along $+z$, due to the opposite charge). The inset shows the 1D profile along x of the bulk four-velocity in the outflow direction (i.e., along x), measured at $y = 0$. Bottom panel: synchrotron spectrum at the final time $ct/L = 3$ along different directions (within a solid angle of $\Delta\Omega/4\pi \sim 3 \times 10^{-3}$), as indicated in the legend. The resulting anisotropy of the synchrotron emission is consistent with the particle anisotropy illustrated in the top panel.

steeper than $\gamma dN/d\gamma \propto \gamma^{-1}$ (corresponding to equal energy content per decade);[†] and a high-energy hard population, with $\gamma dN/d\gamma \propto \gamma^{1/2}$ (so, with the highest energy particles dominating both the number and the energy census). The presence of the soft component, whose energy per particle is significantly lower than the average energy (namely, of the local magnetization), allows the high-energy component to stretch to higher energies, potentially offsetting the energy crisis.

The two sub-populations have different origins: by tracking individual particles, we find that the soft component is dominated by particles belonging to secondary plasmoids, that are accelerated during plasmoid mergers; in contrast, the hard component is populated by particles that are accelerated by the strong electric fields of the charged-starved regions with $E > B$, and are nearly unaffected by the presence of secondary plasmoids. In fact,

[†] The power-law nature of the low-energy component is clearly apparent in the momentum spectrum, see the black line in the top panel of Fig. 16.

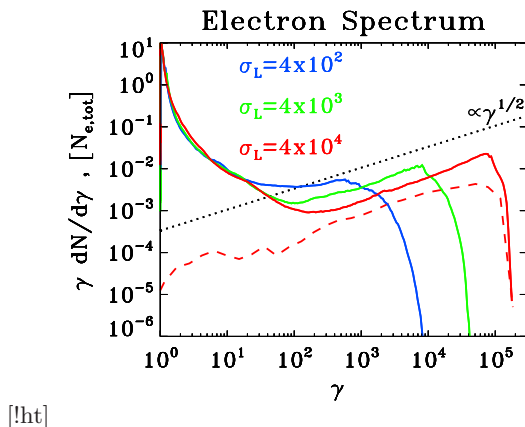


FIGURE 17. Dependence of the electron energy spectrum on the magnetization, for three values of σ_L (same values and color coding as in Fig. 13) and vanishing guide field: $\sigma_L = 4 \times 10^2$ (blue), $\sigma_L = 4 \times 10^3$ (green) and $\sigma_L = 4 \times 10^4$ (red). All the spectra are computed at $ct/L = 1.8$. At high magnetizations, two components can be seen in the spectrum: a steep low-energy component and a hard high-energy population that can be fitted as $\gamma dN/d\gamma \propto \gamma^{1/2}$ (black dotted line). The red dashed line is the particle spectrum for $\sigma_L = 4 \times 10^4$ at the same time as the red solid line, but including only the particles located in regions where $E > B$.

the spectrum of the particles located in $E > B$ regions, presented in Fig. 17 with a dashed red line, only shows the hard component.

Our simulations of X-point collapse in the presence of a nonzero guide field provide further support to this conclusion. At early times, when no secondary plasmoids are present (in fact, the guide field suppresses the secondary tearing mode), particle energization can only occur via direct acceleration by the charge-starved electric fields in $\mathbf{E} \cdot \mathbf{B} \neq 0$ regions. At these times, only the hard component with $\gamma dN/d\gamma \propto \gamma^{1/2}$ appears in the corresponding particle spectrum (not shown). At later times, when the guide field at the current sheet becomes sub-dominant with respect to the in-plane fields, secondary plasmoids can be generated, and an additional soft component appears in the particle spectrum.

We conclude by analyzing the anisotropy of the particle distribution, for $\sigma_L = 4 \times 10^2$. In the top panel of Fig. 16, we plot the electron momentum spectrum at the final time $ct/L = 3$ along different directions, as indicated in the legend. The particle distribution is significantly anisotropic. The highest energy electrons are beamed along the direction x of the reconnection outflow (blue lines) and along the direction $-z$ of the accelerating electric field (red dashed line; positrons will be beamed along $+z$, due to the opposite charge). This is consistent with earlier PIC simulations of plane-parallel reconnection in a small computational box, where the X-point acceleration phase was still appreciably imprinting the resulting particle anisotropy (Cerutti *et al.* 2012b, 2013, 2014; Kagan *et al.* 2016). In contrast, plane-parallel reconnection in larger computational domains generally leads to quasi-isotropic particle distributions (Sironi & Spitkovsky 2014). In our setup of a large-scale X-point, we would expect the same level of strong anisotropy measured in small-scale X-points of plane-parallel reconnection, as indeed demonstrated in the top panel of Fig. 16. Most of the anisotropy is to be attributed to the “kinetic beaming” discussed by Cerutti *et al.* (2012b), rather than beaming associated with the bulk motion (which is only marginally relativistic, see the inset in the top panel of Fig. 16).

The angle-averaged synchrotron spectrum expected from a relativistic X-point collapse

is shown in the bottom panel of Fig. 15. For each macro-particle in our PIC simulation, we compute the instantaneous radius of curvature and the corresponding synchrotron emission spectrum. We neglect synchrotron cooling in the particle equations of motion (unlike Cerutti *et al.* 2013, 2014; Kagan *et al.* 2016), and we do not consider the effect of synchrotron self-absorption and the Razin suppression at low frequencies. At late times, the synchrotron spectrum approaches a power law with $\nu L_\nu \propto \nu$, which just follows from the fact that the electron spectrum is $\gamma dN/d\gamma \propto \text{const.}$ This is consistent with the spectrum of the Crab flares. The frequency on the horizontal axis is in units of $\nu_{B,0} = \sqrt{\sigma_L} \omega_p / 2\pi$. Given the maximum particle energy in the top panel, $\gamma_{\text{max}} \sim 10^4$, one would expect the synchrotron spectrum to cut off at $\nu_{\text{max}} \sim \gamma_{\text{max}}^2 \nu_{B,0} \sim 10^8 \nu_{B,0}$, as indeed confirmed in the bottom panel. The bottom panel of Fig. 16 shows the synchrotron spectrum at the final time $ct/L = 3$ along different directions (within a solid angle of $\Delta\Omega/4\pi \sim 3 \times 10^{-3}$), as indicated in the legend. The resulting anisotropy of the synchrotron emission is consistent with the particle anisotropy illustrated in the top panel of Fig. 16. In addition, one can see that the resulting synchrotron spectrum along the direction $-z$ of the accelerating electric field (dashed red line) appears even harder than the spectrum along x or y .

5. Discussion and Conclusions

In highly magnetized plasma, the collapse of a uniformly compressed X-point proceeds very rapidly, on the light-crossing time of the configuration. As a result, the collapse cannot be described using classical quasi-static approach and the generated electric field is of the order of the magnetic one. In the framework of force-free electrodynamics, we find that without guide field, the x-point immediately develops a singularity – collapses into a current sheet bounded by two Y-points, which fly away at the speed of light. With guide field, the development of singularities is delayed and the initial phase of the collapse can be described analytically. We have shown that for the central region of the X-point, where the guide field strength exceeds that of the in-plane magnetic field, the problem reduces to a single ODE for the squeeze parameter and we have found a simple asymptotic solution to this equation. The solution describes a systematic increase of this parameter, thus indicating that in highly magnetized plasma X-points remain unstable to collapse. This conclusion is confirmed by the results of computer simulations, both force-free and PIC.

The force-free and PIC simulation agree very well until the point where the development of strong electric field leads to a breakdown of the force-free approximation near the plane of the collapse. Before this point, the plasma kinetic effects are weak and the evolution is totally controlled by the large-scale magnetic stresses. After this point, the kinetic effects become increasingly important in determining the current sheet structure and its feedback to the surrounding electromagnetic field. Although qualitatively, and in many ways quantitatively, the force-free and PIC solutions remain similar, a number of differences become manifest. E.g. in the PIC simulations the current sheet develops magnetic islands (plasmoids) whereas the force-free current sheet remains rather featureless[†].

As the current sheet expands into the region where the guide field is weak, its evolution becomes self-similar. This is observed both in the force-free and PIC simulations. Without guide field, the transition to this regime is very quick. In PIC simulations this occurs as

[†] Although such islands may form in force-free simulations, at least for some types of current sheets, this process is governed by numerical factors and hence not physical.

soon as the length of the current sheet significantly exceeds the skin depth. In the self-similar regime, the macroscopic distribution of the magnetic and electric fields around the current sheet remains unchanged but the field strengths scale with the size of the current sheet, which increases at almost the speed of light. Hence the strength of average electric and magnetic fields in the reconnecting region grows linearly with time, whereas the overall reconnection rate remains unchanged.

We find that as σ increases the reconnection rate approaches the speed of light on a macroscopic scale. This is in contrast with the previous PIC simulations of magnetic reconnection where such high rates have been seen only on the microscopic scales. The large macroscopic stresses typical for the collapsing X-point configuration appear to be the main factor behind the increase. As the strength of the magnetic field brought into the reconnection zone grows linearly with time, so does the strength of the reconnection electric field. This allows the maximum energy of accelerated particles to increase as $\propto t^2$.

Particle acceleration is a self-consistent by-product of the X-point collapse. Regardless of whether or not a guide field is present in the initial configuration, the highest energy particles are injected into the acceleration process in charged-starved regions (i.e., where $\mathbf{E} \cdot \mathbf{B} \neq 0$ in the case with guide field, or where $E > B$ for zero guide field), and energized via direct acceleration by the reconnection electric field. As a result, the maximum particle energy does increase as $\propto t^2$. While secondary plasmoids are continuously generated in the current sheet (in the cases with guide field, at sufficiently late times), in our setup they are not instrumental for the acceleration of the highest energy particles. The high-energy part of the spectrum is hard, with power-law slope even harder than -1 , and populated by highly anisotropic particles, beamed primarily along the direction of the accelerating electric field.

The hard high-energy tail can be problematic if it includes a large fraction of the accelerated particles as in this case the particle energy is limited by the mean magnetization σ of plasma brought into the reconnection zone. This would require unrealistic $\sigma \approx 10^{10}$ in order to explain Crab's flares. However, as soon as the secondary plasmoids are formed in the current sheet, we observe an emergence of the second population of the accelerated particles. These particles are trapped inside the plasmoids, they are accelerated mostly during plasmoid mergers and their spectrum is significantly softer. By the end of our simulations, the number of particles trapped in the plasmoids exceeds that of the hard-energy tail by several orders of magnitude, thus indicating the possible route of resolving this kind of σ -problem. Unfortunately, due to the computational limitations we have not been able to reach the particle energies $\gamma \approx 10^{10}$ typical for the Crab flares. Additional studies are needed to clarify this issue.

Since magnetic X-points are unstable to collapse, this brings about the question of how they can be formed in the first place. We cannot exclude that static macroscopic configurations of the sort can be maintained in controlled laboratory experiments, but they are most unlikely to be found in highly dynamic conditions of astrophysical plasma. Here we studied this configuration as an example of a system where large scale magnetic stresses drive magnetic reconnection and dictate its rate. In the second paper of the series, we consider another artificial example of initially steady-state configuration, the so-called ABC magnetic structure. This periodic configuration has local macroscopic X-points. We find that this configuration is unstable and that the development of this instability triggers collapse of these X-points in the similar fashion to what we described here. This result suggests that highly-magnetized plasma configurations are generally unstable and exist mainly in the state of rapid restructuring on the light-crossing time. During this restructuring, macroscopic stresses drive magnetic reconnection, causing local magnetic dissipation and acceleration of non-thermal particles. In the final paper of

the series, we no longer consider a static initial configuration but study a collision of magnetic current tubes. Such a collision is also accompanied by development of X-points (highly compressed ones) and also leads to magnetic reconnection driven by macroscopic magnetic stresses. Thus, it seems that we are dealing with a rather general phenomenon which may have important applications in relativistic astrophysics.

We would like to thank Roger Blandford, Krzysztof Nalewajko, Dmitri Uzdensky and Jonathan Zrake for numerous and helpful discussions.

The PIC simulations were performed on XSEDE resources under contract No. TG-AST120010, and on NASA High-End Computing (HEC) resources through the NASA Advanced Supercomputing (NAS) Division at Ames Research Center. ML would like to thank for hospitality Osservatorio Astrofisico di Arcetri and Institut de Ciencies de l’Espai, where large parts of this work were conducted. SSK thanks Purdue University for hospitality during his sabbatical in 2014. This work had been supported by NASA grant NNX12AF92G, NSF grant AST-1306672 and DoE grant DE-SC0016369. OP is supported by the ERC Synergy Grant “BlackHoleCam – Imaging the Event Horizon of Black Holes” (Grant 610058). SSK is supported by the STFC grant ST/N000676/1.

REFERENCES

- ABDO, A. A., ACKERMANN, M., AJELLO, M., ALLAFORT, A., BALDINI, L., BALLE, J., BARBIELLINI, G. & BASTIERI, D. *et al.* 2011 Gamma-Ray Flares from the Crab Nebula. *Science* **331**, 739–, arXiv: 1011.3855.
- BAI, X.-N., CAPRIOLI, D., SIRONI, L. & SPITKOVSKY, A. 2015 Magnetohydrodynamic-particle-in-cell Method for Coupling Cosmic Rays with a Thermal Plasma: Application to Non-relativistic Shocks. *Astrophys. J.* **809**, 55, arXiv: 1412.1087.
- BEDNAREK, W. & IDEC, W. 2011 On the variability of the GeV and multi-TeV gamma-ray emission from the Crab nebula. *Mon. Not. Roy. Astron. Soc.* **414**, 2229–2234, arXiv: 1011.4176.
- BELYAEV, M. A. 2015 PICsar: A 2.5D axisymmetric, relativistic, electromagnetic, Particle in Cell code with a radiation absorbing boundary. *Nature* **36**, 37–49, arXiv: 1407.1810.
- BESHO, N. & BHATTACHARJEE, A. 2012 Fast Magnetic Reconnection and Particle Acceleration in Relativistic Low-density Electron-Positron Plasmas without Guide Field. *Astrophys. J.* **750**, 129.
- BIRDSALL, C. K. & LANGDON, A. B. 1991 *Plasma Physics via Computer Simulation*.
- BUEHLER, R., SCARGLE, J. D., BLANDFORD, R. D., BALDINI, L., BARING, M. G., BELFIORE, A., CHARLES, E., CHIANG, J., D’AMMANDO, F., DERMER, C. D., FUNK, S., GROVE, J. E., HARDING, A. K., HAYS, E., KERR, M., MASSARO, F., MAZZIOTTA, M. N., ROMANI, R. W., SAZ PARKINSON, P. M., TENNANT, A. F. & WEISSKOPF, M. C. 2012 Gamma-Ray Activity in the Crab Nebula: The Exceptional Flare of 2011 April. *Astrophys. J.* **749**, 26, arXiv: 1112.1979.
- BUNEMAN, O. 1993 in "Computer Space Plasma Physics", Terra Scientific, Tokyo, 67.
- CERUTTI, B., UZDENSKY, D. A. & BEGELMAN, M. C. 2012a Extreme Particle Acceleration in Magnetic Reconnection Layers: Application to the Gamma-Ray Flares in the Crab Nebula. *Astrophys. J.* **746**, 148, arXiv: 1110.0557.
- CERUTTI, B., WERNER, G. R., UZDENSKY, D. A. & BEGELMAN, M. C. 2012b Beaming and Rapid Variability of High-energy Radiation from Relativistic Pair Plasma Reconnection. *Astrophys. J. Lett.* **754**, L33, arXiv: 1205.3210.
- CERUTTI, B., WERNER, G. R., UZDENSKY, D. A. & BEGELMAN, M. C. 2013 Simulations of Particle Acceleration beyond the Classical Synchrotron Burnoff Limit in Magnetic Reconnection: An Explanation of the Crab Flares. *Astrophys. J.* **770**, 147, arXiv: 1302.6247.
- CERUTTI, B., WERNER, G. R., UZDENSKY, D. A. & BEGELMAN, M. C. 2014 Three-dimensional Relativistic Pair Plasma Reconnection with Radiative Feedback in the Crab Nebula. *Astrophys. J.* **782**, 104, arXiv: 1311.2605.
- CLAUSEN-BROWN, E. & LYUTIKOV, M. 2012 Crab nebula gamma-ray flares as relativistic reconnection minijets. *MNRAS* **426**, 1374–1384, arXiv: 1205.5094.
- COWLEY, S. C. & ARTUN, M. 1997 Explosive instabilities and detonation in magnetohydrodynamics. *Phys. Rep.* **283**, 185–211.
- DE JAGER, O. C., HARDING, A. K., MICHELSON, P. F., NEL, H. I., NOLAN, P. L., SREEKUMAR, P. & THOMPSON, D. J. 1996 Gamma-Ray Observations of the Crab Nebula: A Study of the Synchro-Compton Spectrum. *Astrophys. J.* **457**, 253–+.
- DENG, W., LI, H., ZHANG, B. & LI, S. 2015 Relativistic MHD Simulations of Collision-induced Magnetic Dissipation in Poynting-flux-dominated Jets/outflows. *Astrophys. J.* **805**, 163, arXiv: 1501.07595.
- DUNGEY, J.W. 1953 Lxxvi. conditions for the occurrence of electrical discharges in astrophysical systems. *The London, Edinburgh, and Dublin Philosophical Magazine and Journal of Science* **44** (354), 725–738, arXiv: <http://dx.doi.org/10.1080/14786440708521050>.
- DUNGEY, J. W. 1953 A family of solutions of the magneto-hydrostatic problem in a conducting atmosphere in a gravitational field. *MNRAS* **113**, 180.
- GRAF VON DER PAHLEN, J. & TSIKLARI, D. 2014 The effect of guide-field and boundary conditions on collisionless magnetic reconnection in a stressed X-point collapse. *Physics of Plasmas* **21** (1), 012901, arXiv: 1312.5366.
- GRUZINOV, A. 1999 Stability in Force-Free Electrodynamics. *ArXiv Astrophysics e-prints* , arXiv: astro-ph/9902288.
- GUO, F., LIU, Y.-H., DAUGHTON, W. & LI, H. 2015 Particle Acceleration and Plasma

- Dynamics during Magnetic Reconnection in the Magnetically Dominated Regime. *Astrophys. J.* **806**, 167, arXiv: 1504.02193.
- HOCKNEY, R. W. & EASTWOOD, J. W. 1981 *Computer Simulation Using Particles*.
- IMSHENNIK, V. S. & SYROVATSKII, S. I. 1967 Two-dimensional Flow of an Ideally Conducting Gas in the Vicinity of the Zero Line of a Magnetic Field. *Soviet Journal of Experimental and Theoretical Physics* **25**, 656.
- KAGAN, D., NAKAR, E. & PIRAN, T. 2016 Beaming of particles and synchrotron radiation in relativistic magnetic reconnection. *ArXiv e-prints*, arXiv: 1601.07349.
- KOMISSAROV, S. S. 2002 Time-dependent, force-free, degenerate electrodynamics. *MNRAS* **336**, 759–766, arXiv: astro-ph/0202447.
- KOMISSAROV, S. S., BARKOV, M. & LYUTIKOV, M. 2007 Tearing instability in relativistic magnetically dominated plasmas. *MNRAS* **374**, 415–426, arXiv: astro-ph/0606375.
- LI, J., SPITKOVSKY, A. & TCHEKHOVSKOY, A. 2012 Resistive Solutions for Pulsar Magnetospheres. *Astrophys. J.* **746**, 60, arXiv: 1107.0979.
- LIU, Y.-H., GUO, F., DAUGHTON, W., LI, H. & HESSE, M. 2015 Scaling of Magnetic Reconnection in Relativistic Collisionless Pair Plasmas. *Physical Review Letters* **114** (9), 095002, arXiv: 1410.3178.
- LYUTIKOV, M. 2003 Explosive reconnection in magnetars. *MNRAS* **346**, 540–554, arXiv: arXiv:astro-ph/0303384.
- LYUTIKOV, M. 2010 A high-sigma model of pulsar wind nebulae. *MNRAS* **405**, 1809–1815, arXiv: 0911.0324.
- LYUTIKOV, M. & LAZARIAN, A. 2013 Topics in Microphysics of Relativistic Plasmas. *Space Sci. Rev.* **178**, 459–481, arXiv: 1305.3838.
- NALEWAJKO, K., UZDENSKY, D. A., CERUTTI, B., WERNER, G. R. & BEGELMAN, M. C. 2015 On the Distribution of Particle Acceleration Sites in Plasmoid-dominated Relativistic Magnetic Reconnection. *Astrophys. J.* **815**, 101, arXiv: 1508.02392.
- PRIEST, E. & FORBES, T. 2000 *Magnetic Reconnection*.
- SIRONI, L. & SPITKOVSKY, A. 2014 Relativistic Reconnection: An Efficient Source of Non-thermal Particles. *Astrophys. J. Lett.* **783**, L21, arXiv: 1401.5471.
- SPITKOVSKY, A. 2005 Simulations of relativistic collisionless shocks: shock structure and particle acceleration. In *Astrophysical Sources of High Energy Particles and Radiation* (ed. T. Bulik, B. Rudak, & G. Madejski), *AIP Conf. Ser.*, vol. 801, p. 345, arXiv: arXiv:astro-ph/0603211.
- SWEET, P. A. 1969 Mechanisms of Solar Flares. *ARA&A* **7**, 149.
- SYROVATSKII, S. I. 1975 Charged-particle acceleration in processes of the solar-flare type. *Akademiia Nauk SSSR Izvestiia Seriya Fizicheskaiia* **39**, 359–374.
- SYROVATSKII, S. I. 1981 Pinch sheets and reconnection in astrophysics. *ARA&A* **19**, 163–229.
- TAVANI, M., BULGARELLI, A., VITTORINI, V., PELLIZZONI, A., STRIANI, E., CARAVEO, P., WEISSKOPF, M. C. & TENNANT, A. *et al.* 2011 Discovery of Powerful Gamma-Ray Flares from the Crab Nebula. *Science* **331**, 736–, arXiv: 1101.2311.
- TSIKLAURI, D. & HARUKI, T. 2007 Magnetic reconnection during collisionless, stressed, X-point collapse using particle-in-cell simulation. *Physics of Plasmas* **14** (11), 112905–112905, arXiv: 0708.1699.
- TSIKLAURI, D. & HARUKI, T. 2008 Physics of collisionless reconnection in a stressed X-point collapse. *Physics of Plasmas* **15** (10), 102902–102902, arXiv: 0807.3252.
- UCHIDA, T. 1997 Theory of force-free electromagnetic fields. I. General theory. *Phys. Rev. E* **56**, 2181–2197.
- UZDENSKY, D. A., CERUTTI, B. & BEGELMAN, M. C. 2011 Reconnection-powered Linear Accelerator and Gamma-Ray Flares in the Crab Nebula. *Astrophys. J. Lett.* **737**, L40, arXiv: 1105.0942.
- UZDENSKY, D. A., LOUREIRO, N. F. & SCHEKOCIHIN, A. A. 2010 Fast Magnetic Reconnection in the Plasmoid-Dominated Regime. *Physical Review Letters* **105** (23), 235002, arXiv: 1008.3330.
- VAY, J.-L. 2008 Simulation of beams or plasmas crossing at relativistic velocity). *Physics of Plasmas* **15** (5), 056701.
- VON DER PAHLEN, J. G. & TSIKLAURI, D. 2014 Octupolar out-of-plane magnetic field structure

generation during collisionless magnetic reconnection in a stressed X-point collapse. *Physics of Plasmas* **21** (6), 060705, arXiv: 1406.3890.

- WEISSKOPF, M. C., TENNANT, A. F., ARONS, J., BLANDFORD, R., BUEHLER, R., CARAVEO, P., CHEUNG, C. C., COSTA, E., DE LUCA, A., FERRIGNO, C., FU, H., FUNK, S., HABERMEHL, M., HORNS, D., LINFORD, J. D., LOBANOV, A., MAX, C., MIGNANI, R., O'DELL, S. L., ROMANI, R. W., STRIANI, E., TAVANI, M., TAYLOR, G. B., UCHIYAMA, Y. & YUAN, Y. 2013 Chandra, Keck, and VLA Observations of the Crab Nebula during the 2011-April Gamma-Ray Flare. *Astrophys. J.* **765**, 56, arXiv: 1211.3997.
- WERNER, G. R., UZDENSKY, D. A., CERUTTI, B., NALEWAJKO, K. & BEGELMAN, M. C. 2016 The Extent of Power-law Energy Spectra in Collisionless Relativistic Magnetic Reconnection in Pair Plasmas. *Astrophys. J. Lett.* **816**, L8, arXiv: 1409.8262.
- ZENITANI, S. & HOSHINO, M. 2008 The Role of the Guide Field in Relativistic Pair Plasma Reconnection. *Astrophys. J.* **677**, 530–544, arXiv: 0712.2016.

Appendix A. Stability of unstressed X-point

The above analytical solution shows that the steady-state X-point solution is kind of unstable. This rises the question of how such configuration can be created in a first place. Indeed, unstable states of a dynamical system cannot be reached via its natural evolution. However, the X-point configuration considered in this analyses occupies the whole space and so is the perturbation that leads to its collapse. In reality, X-points and their perturbations occupy only finite volume and in order to address the stability issue comprehensively one has to study finite size configurations.

In this section we describe the response of X-point to small-scale perturbations studied via force-free simulations. In one of our experiments, we perturbed the steady-state X-point configuration by varying only the x-component of the magnetic field:

$$\delta B_x = B_{\perp} \sin(\pi y/L) \exp(-(y/L)^2).$$

Obviously, the length scale this perturbation is L and to ensure that it is small we select a computational domain whose size is much larger than L . In this particular case we put $B_{\perp} = L = 1$ and use the computational domain $(-6, 6) \times (-6, 6)$ with 300 cells in each direction. Fig. 18 shows the initial configuration and the solution at $t = 7$. One can see that the perturbation does not push the X-point away from its steady-state. On the contrary, the waves created by the perturbation leave the central area on the light crossing time and the steady-state configuration is restored. Although, here we present the results only for this particular type of perturbation, we have tried several other types and obtained the same outcome. Thus, we conclude that the magnetic X-point is stable to perturbations on a length scale which is much smaller compared to its size, even when the perturbation amplitude is substantial.

We have also verified the stability of unstressed X-points with PIC simulations. Here, no initial perturbation is imposed on the system. In the standard setup of anti-parallel reconnection, the system would grow unstable from particle noise. Here, we have demonstrated that an unstressed X-point is stable to noise-level fluctuations.

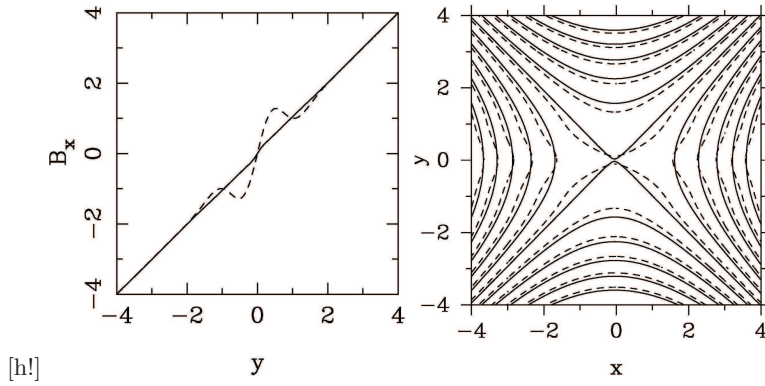


FIGURE 18. Stability of the X-point to small-scale perturbations in force-free simulations. The left panel shows the x component of the magnetic field along the line $y = 0$. The dashed line corresponds to the initial perturbed solution. The solid line corresponds to the numerical solution at $t = 7$. The right panel shows the magnetic field lines of the initial solution (dashed lines) and the solution at $t = 7$.