



UNIVERSITY OF LEEDS

This is a repository copy of *Autophagic Flux is Regulated by Interaction Between the C-terminal Domain of Patched1 and ATG101*.

White Rose Research Online URL for this paper:
<http://eprints.whiterose.ac.uk/126845/>

Version: Supplemental Material

Article:

Chen, LX, Morales-Alcala, CC and Riobo-Del Galdo, NA orcid.org/0000-0002-8942-7873
(2018) *Autophagic Flux is Regulated by Interaction Between the C-terminal Domain of Patched1 and ATG101*. *Molecular Cancer Research*, 16 (5). pp. 909-919. ISSN 1541-7786

<https://doi.org/10.1158/1541-7786.MCR-17-0597>

(c) 2018, American Association for Cancer Research. This is an author produced version of a paper published in American Association for Cancer Research. Uploaded in accordance with the publisher's self-archiving policy. The most current version can be found here; <https://doi.org/10.1158/1541-7786.MCR-17-0597>

Reuse

Items deposited in White Rose Research Online are protected by copyright, with all rights reserved unless indicated otherwise. They may be downloaded and/or printed for private study, or other acts as permitted by national copyright laws. The publisher or other rights holders may allow further reproduction and re-use of the full text version. This is indicated by the licence information on the White Rose Research Online record for the item.

Takedown

If you consider content in White Rose Research Online to be in breach of UK law, please notify us by emailing eprints@whiterose.ac.uk including the URL of the record and the reason for the withdrawal request.



eprints@whiterose.ac.uk
<https://eprints.whiterose.ac.uk/>

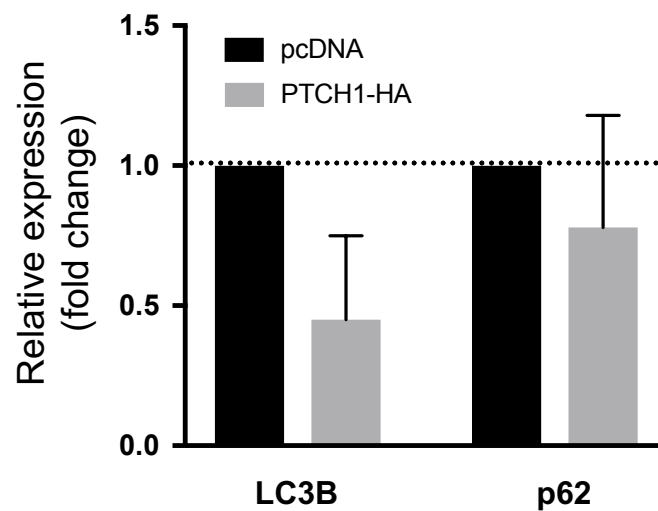


Figure 1S. Expression of PTCH1-HA does not upregulate the expression of LC3B or p62. $2^{-\Delta\Delta Ct}$ values were obtained for LC3B and p62 using GAPDH to housekeeping control, and pcDNA-transfected values were arbitrarily assigned a value of 1-fold. Data represent the mean \pm SEM (n=3).

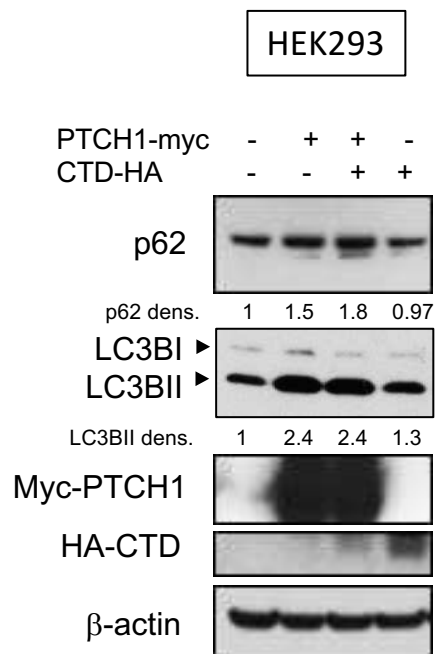


Figure 2S. HEK 293 cells were transfected with empty plasmid, PTCH1-myc alone, PTCH1-myc and CTD-HA together, or CTD-HA alone. After 24 h the level of p62 and LC3BII was determined by western blot.