



This is a repository copy of *Lower long term relative survival and higher excess mortality in women and in elderly after acute myocardial infarction: a national cohort study using 180,368 cases from the SWEDEHEART registry.*

White Rose Research Online URL for this paper:  
<http://eprints.whiterose.ac.uk/126246/>

Version: Accepted Version

---

**Proceedings Paper:**

Alabas, OA, Rutherford, M, Hall, M [orcid.org/0000-0003-1246-2627](https://orcid.org/0000-0003-1246-2627) et al. (4 more authors) (2016) Lower long term relative survival and higher excess mortality in women and in elderly after acute myocardial infarction: a national cohort study using 180,368 cases from the SWEDEHEART registry. In: European Heart Journal. ESC Congress 2016, 27-31 Aug 2016, Rome, Italy. Oxford University Press , p. 1385.

<https://doi.org/10.1093/eurheartj/ehw434>

---

© The Author 2016. Published on behalf of the European Society of Cardiology. All rights reserved. This is a pre-copyedited, author-produced version of an article accepted for publication in European Heart Journal following peer review. The version of record (Alabas, OA, Rutherford, M, Hall, M et al. (4 more authors) (2016) Lower long term relative survival and higher excess mortality in women and in elderly after acute myocardial infarction: a national cohort study using 180,368 cases from the SWEDEHEART registry. In: European Heart Journal. ESC Congress 2016, 27-31 Aug 2016, Rome, Italy. OUP , p. 1385.) is available online at: <https://doi.org/10.1093/eurheartj/ehw434>. Uploaded in accordance with the publisher's self-archiving policy.

**Reuse**

Items deposited in White Rose Research Online are protected by copyright, with all rights reserved unless indicated otherwise. They may be downloaded and/or printed for private study, or other acts as permitted by national copyright laws. The publisher or other rights holders may allow further reproduction and re-use of the full text version. This is indicated by the licence information on the White Rose Research Online record for the item.

**Takedown**

If you consider content in White Rose Research Online to be in breach of UK law, please notify us by emailing [eprints@whiterose.ac.uk](mailto:eprints@whiterose.ac.uk) including the URL of the record and the reason for the withdrawal request.

**Lower long term relative survival and higher excess mortality in women and in elderly after acute myocardial infarction: a national cohort study using 180,368 cases from the SWEDEHEART registry**

**Authors:**

O.A. Alabas<sup>1</sup>, M. Rutherford<sup>2</sup>, M. Hall<sup>1</sup>, K. Szummer<sup>3</sup>, B. Lindahl<sup>4</sup>, C.P. Gale<sup>1</sup>, T. Jernberg<sup>3</sup>, <sup>1</sup>University of Leeds - Leeds - United Kingdom, <sup>2</sup>University of Leicester - Leicester - United Kingdom, <sup>3</sup>Karolinska University Hospital, Department of Medicine (H7) - Stockholm - Sweden, <sup>4</sup>Uppsala University Hospital - Uppsala - Sweden,

**Topic(s):**

Post infarction period

**Citation:**

European Heart Journal ( 2016 ) 37 ( Abstract Supplement ), 1385

**Background:** The majority of large scale studies of long-term survival for acute myocardial infarction (AMI) use all-cause mortality as their clinical outcome. However, such data also include the risk of death from causes other than AMI. In the absence of reliable and accurate cause-specific death data for AMI, we aimed to study the long-term relative survival and excess mortality after AMI compared with that of the general population.

**Methods:** A population-based cohort of 180,368 cases were extracted from the Swedish Web-system for Enhancement and Development of Evidence-based care in Heart disease Evaluated According to Recommended Therapies (SWEDEHEART) between 2003 and 2013. The relative survival and excess mortality were assessed for ST-elevation myocardial infarction (STEMI; n=60,712) and non-STEMI (NSTEMI; n=119,656) patients by comparing all-cause mortality data for the cohort with mortality data for an age, sex and year matched general population obtained from the Swedish Human Mortality Database. Relative survival and excess mortality rate ratios (EMRR) for age, sex and year were estimated using flexible parametric survival modelling.

**Results:** Over 821,173.671 person-years of follow-up, there were 70,902 (38.9%) deaths. Excess mortality increased significantly with age. Figure 1 shows the cumulative relative survival stratified by age, sex and year of diagnosis for STEMI and NSTEMI.

For STEMI, EMRRs were 2.18 (95% CI; 1.89–2.53) and 4.76 (95% CI; 4.05–5.60) for those aged 76–85 years and above 85 years respectively compared to the reference group 66–75 years, whereas EMRRs were 0.32 (95% CI; 0.25–0.41) for <55 years and 0.51 (95% CI; 0.42–0.62) respectively compared to the reference group.

Females had significantly worse survival compared with males for STEMI (EMRR=1.53, 95% CI; 1.26–1.87) and NSTEMI (EMRR=1.13, 95% CI; 1.08–1.18).

Compared with the early cohort (2003–05), excess mortality was significantly reduced in STEMI (2006–08 EMRRs 0.73, 95% CI 0.63–0.84; 2009–11 0.73, 0.64–0.84; 2012–13 0.74, 0.63–0.86) and NSTEMI (2006–08 EMRRs 0.76, 0.72–0.80; 2009–11 0.58, 0.54–0.62; 2012–2013 0.52, 0.46–0.57).

**Conclusion:** Survival following AMI improved over time, in particular for NSTEMI, after taking into account mortality rates in the general population. Furthermore, relative survival was higher in the younger cohorts and among males. However, older patients and females showed poorer survival even when accounting for their age, sex and year matched background population counterparts. Therefore, improved cardiovascular management should be addressed carefully to these groups.

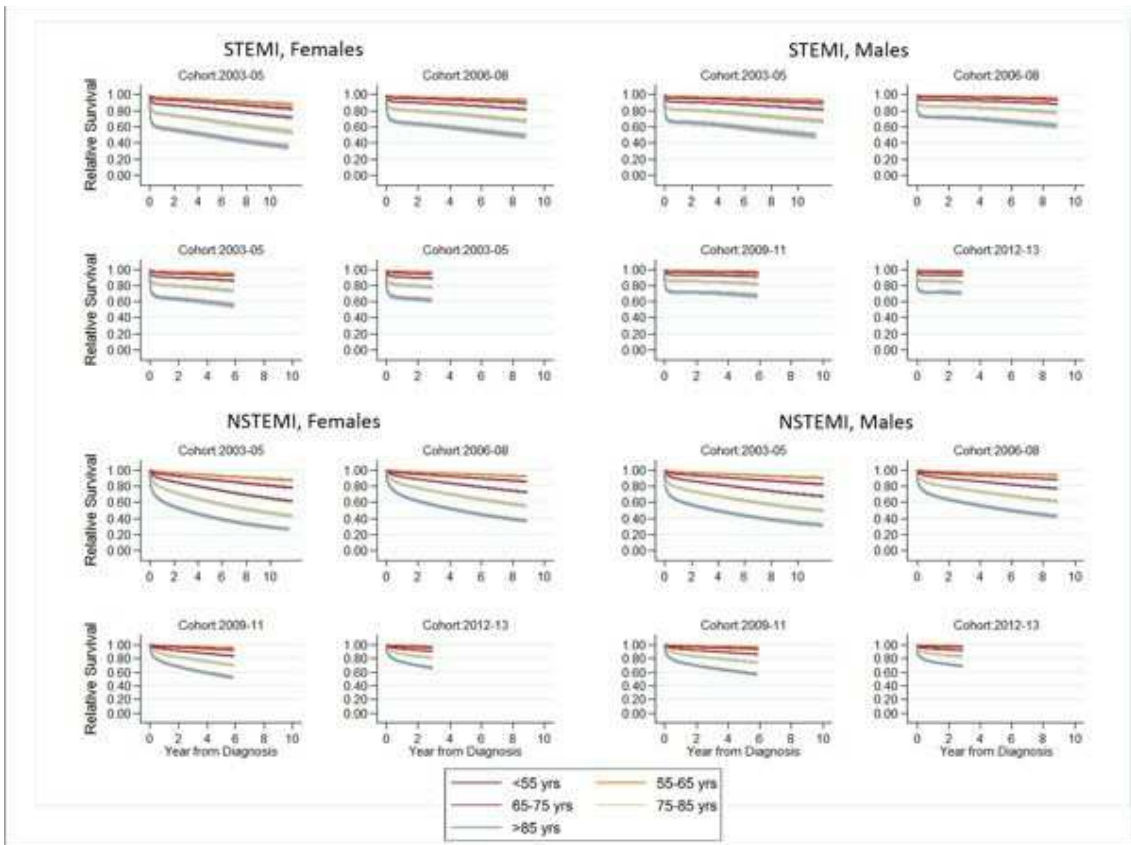


Figure 1