



UNIVERSITY OF LEEDS

This is a repository copy of *Pelvic re-irradiation using stereotactic ablative radiotherapy (SABR): A systematic review*.

White Rose Research Online URL for this paper:  
<http://eprints.whiterose.ac.uk/123302/>

Version: Supplemental Material

---

**Article:**

Murray, LJ [orcid.org/0000-0003-0658-6455](http://orcid.org/0000-0003-0658-6455), Lilley, J, Hawkins, MA et al. (3 more authors) (2017) Pelvic re-irradiation using stereotactic ablative radiotherapy (SABR): A systematic review. *Radiotherapy and Oncology*, 125 (2). pp. 213-222. ISSN 0167-8140

<https://doi.org/10.1016/j.radonc.2017.09.030>

---

© 2017 Elsevier B.V. This manuscript version is made available under the CC-BY-NC-ND 4.0 license <http://creativecommons.org/licenses/by-nc-nd/4.0/>

**Reuse**

This article is distributed under the terms of the Creative Commons Attribution-NonCommercial-NoDerivs (CC BY-NC-ND) licence. This licence only allows you to download this work and share it with others as long as you credit the authors, but you can't change the article in any way or use it commercially. More information and the full terms of the licence here: <https://creativecommons.org/licenses/>

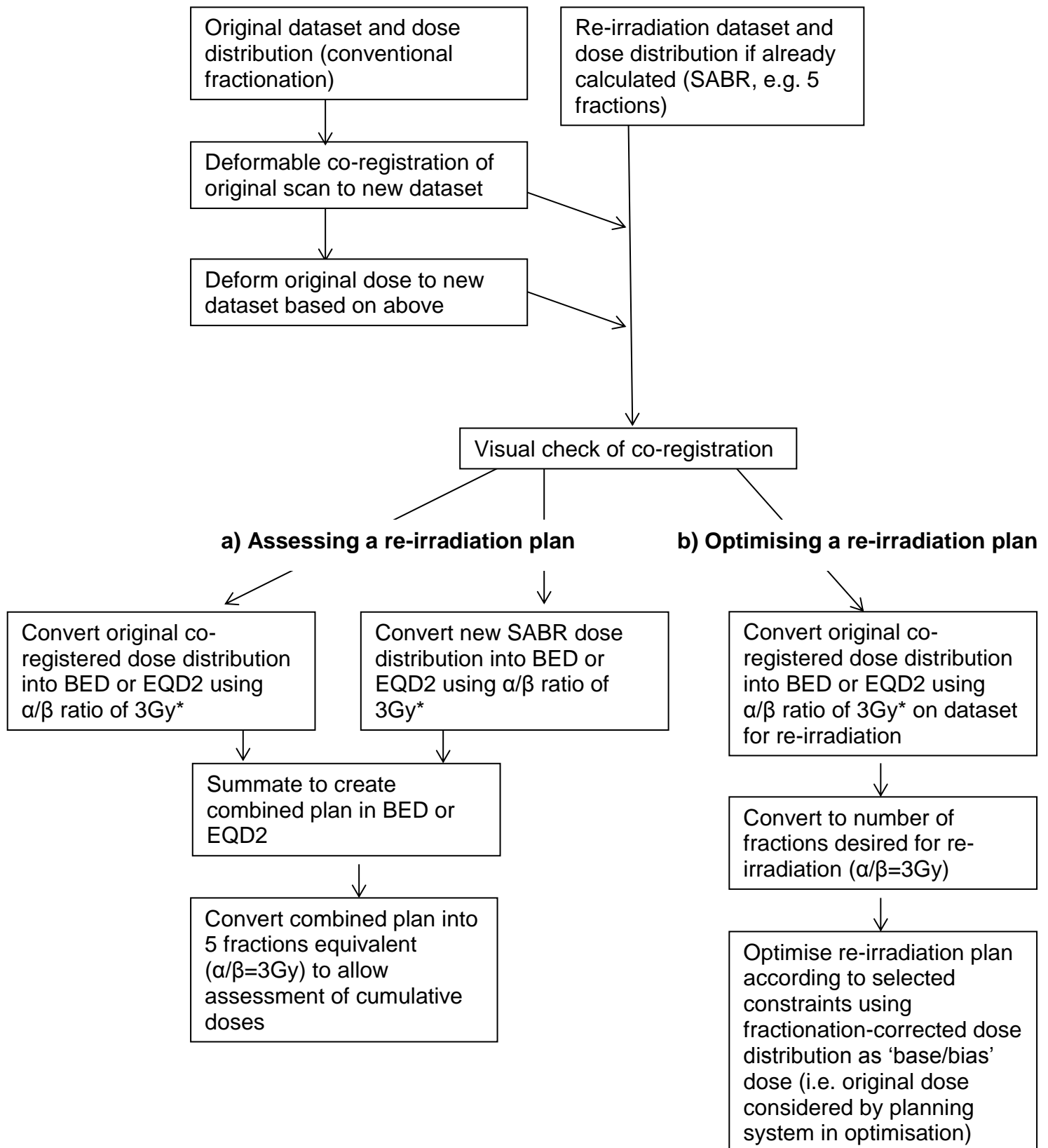
**Takedown**

If you consider content in White Rose Research Online to be in breach of UK law, please notify us by emailing [eprints@whiterose.ac.uk](mailto:eprints@whiterose.ac.uk) including the URL of the record and the reason for the withdrawal request.



[eprints@whiterose.ac.uk](mailto:eprints@whiterose.ac.uk)  
<https://eprints.whiterose.ac.uk/>

Figure 1. Formal pathway for a) plan summation of a former and already created re-irradiation plan and b) optimisation of a re-irradiation plan



\* A different  $\alpha/\beta$  ratio (e.g. 2Gy for spinal cord) could also be used.

BED: biologically equivalent dose, EQD2: equivalent dose in 2Gy fractions, SABR: Stereotactic Ablative Radiotherapy