

## INVITED REVIEW

# Pathways to understanding the genomic aetiology of osteoarthritis

Elena Gibrián Uhalte<sup>1</sup>, Jeremy Mark Wilkinson<sup>2</sup>, Lorraine Southam<sup>3,4</sup> and Eleftheria Zeggini<sup>4,\*</sup>

<sup>1</sup>Human Genetics and Cellular Genetics, Wellcome Trust Sanger Institute, Hinxton CB10 1SA, UK, <sup>2</sup>Department of Oncology and Metabolism, University of Sheffield, Sheffield, S10 2RX, UK, <sup>3</sup>Wellcome Trust Centre for Human Genetics, University of Oxford, Oxford OX3 7BN, UK and <sup>4</sup>Human Genetics, Wellcome Trust Sanger Institute, Hinxton CB10 1SA, UK

\*To whom correspondence should be addressed at: Wellcome Trust Sanger Institute, Wellcome Trust Genome Campus, Hinxton CB10 1HH, UK. Tel: +44 1223496868; Fax: +44 1223496826; Email: eleftheria@sanger.ac.uk

## Abstract

Osteoarthritis is a common, complex disease with no curative therapy. In this review, we summarize current knowledge on disease aetiopathogenesis and outline genetics and genomics approaches that are helping catalyse a much-needed improved understanding of the biological underpinning of disease development and progression.

## Introduction

Osteoarthritis (OA) is the most prevalent musculoskeletal disease and a leading cause of disability worldwide (1–3). The impact of OA across Europe has been described as immense (4,5). OA affects 40% of individuals over the age of 70 (1), is a major cause of pain (6) and is associated with an increased risk of comorbidity and death (7). Ten million people suffer from OA in the UK alone, with a total indirect cost to the economy of £14.8 billion per annum (7). The most common OA site is the knee, affecting 1 in 5 people over the age of 45 (8,9). The health economic burden of OA is rising, commensurate with longevity and obesity rates (8). There is currently no treatment; disease management targets the main symptoms of pain and loss of function and culminates in joint replacement surgery [1.76 million per year in the EU (10)] with variable patient-reported outcomes (11–13). Thus, there is a large unmet need for therapeutic interventions to alter the natural history of the disease (14). This review will outline established and emerging pathways to

improving our understanding of disease aetiopathology through genetics and genomics studies.

## OA Is a Disease of The Synovial Joint

The synovial joint is a complex structure, comprising articular cartilage, subchondral bone, synovial lining membrane, fibrous joint capsule and supporting ligaments. The articular cartilage, calcified cartilage and subchondral bone form the osteochondral unit, a biocomposite that is uniquely adapted to transferring loads during weight bearing and joint motion. The osteochondral unit provides tensile strength, compressive resilience and a low-friction articulating surface through the collagen network, proteoglycan aggregates and layer of lubricants, respectively. Chondrocytes are the only cell type in articular cartilage, which is avascular and aneural. Under normal physiological conditions the synovial membrane consists of a thin layer of cells with phenotypic features of macrophages and

Received: July 17, 2017. Revised: July 24, 2017. Accepted: July 25, 2017

© The Author 2017. Published by Oxford University Press.

This is an Open Access article distributed under the terms of the Creative Commons Attribution License (<http://creativecommons.org/licenses/by/4.0/>), which permits unrestricted reuse, distribution, and reproduction in any medium, provided the original work is properly cited.

fibroblasts (15), and serves to produce synovial fluid that is responsible for maintaining nutrition and lubrication of the articular cartilage. The subchondral bone adapts its structural and functional architecture in response to its local mechanical environment through remodelling, regulated by osteocytes via interactions with osteoclasts and osteoblasts (16).

OA is a disease characterized by a gradual process of tissue destruction and remodelling that affects all of the structures of the synovial joint (17,18), with degeneration of articular cartilage, remodelling of the underlying bone, and synovitis (18) as its hallmarks (Fig. 1). The initiating signals that trigger the development of OA remain poorly understood, however established clinical risk factors include increasing age (19–21), female sex (19,21–23), obesity (20,23,24), occupational exposure to high levels of joint loading activity (23,24), previous joint injury and deformity (25,26), smoking status and family history of OA (27–30). Histological changes in OA include synovial hypertrophy and hyperplasia, with macrophage and lymphocyte recruitment, angiogenesis, and fibroblast proliferation. Those within the osteochondral unit includes loss of chondrocytes in the superficial zone with proliferation in deeper zones; loss of extracellular matrix; vascularization and neuronal ingrowth across the tidemark between calcified and non-calcified cartilage; and remodelling of subchondral bone, resulting in sclerosis, cysts and osteophyte formation.

## OA Is a Complex Genetic Disease

Both environmental and genetic factors play a role in the aetiology of OA, with genetic factors accounting for half of the variation in OA susceptibility (30). To date, and all within the last 10 years, 21 robustly established OA genetic loci have been reported (Fig. 2). With the exception of *GDF5*, which was originally identified by a candidate gene-based approach, the remaining loci were established by genome-wide association studies (GWAS). Primarily the studies were carried out in populations of European descent, with two studies performed in Asian populations and none in African. The majority of associations are joint-specific with differences in effect between end-stage and radiographic OA, as well as between males and females. Most of the variants are common (minor

allele frequency >4%) with small to moderate effect sizes [largest odds ratio (OR) 1.79 for *GDF5*]. All of these characteristics typify the polygenic and complex genetic architecture underpinning OA.

A recent study of end-stage hip OA in Icelanders identified two rare variants located in the chondroadherin-like protein (*CHADL*) and cartilage oligomeric matrix protein (*COMP*) genes, with substantially larger effect sizes than previously seen (OR 7.7 and 16.7, respectively) (31). The *COMP* variant c.1141G>C (allele frequency 0.026%) is a missense variant unique to the Icelandic population. *COMP* is a functional constituent and abundantly expressed in the extracellular matrix of cartilage (32), and has served as a serum biomarker for cartilage degradation (33,34). The *CHADL* variant rs532464664 (homozygote frequency 0.15%, recessive model association) is an insertion resulting in a frameshift and has been observed in other, mostly European populations. *CHADL* is expressed in cartilaginous tissue and is involved in fibrillogenesis and regulation of chondrocyte differentiation (35). Possession of these rare variants in *COMP* and *CHADL* significantly decreased the age at which total hip replacement was performed by 13.5 and 4.9 years, respectively.

Among the 21 established OA loci, several have been found to have potentially pleiotropic effects; *GDF5* is also associated with height; *FTO* with body mass index (BMI) (with *FTO* exerting its effect on OA through BMI); and a recently established OA locus in *SMAD3* with bone mineral density (BMD) (36). Furthermore, variants in astrotactin (*ASTN2*) are associated with total hip replacement in females (37) and also with migraine (38). *ASTN2* is highly expressed in the developing brain and is involved with migrating neurones. Shared pathophysiological features between migraine and OA remain unclear, although it is noteworthy that the major symptom of OA is pain. Genome-wide linkage disequilibrium regression analyses can identify genetic correlations between OA and a wide range of complex physiological, molecular and behavioural traits, followed by formal Mendelian randomization approaches to determine the direction of effect.

Several of the established OA loci also have some translational potential. Variants in the carbohydrate (chondroitin 4) sulphotransferase 11 (*CHST11*) gene are associated with hip OA (37). The protein catalyses the transfer of sulphate groups in chondroitin sulphate, the principal proteoglycan in cartilage. Chondroitin sulphate can be taken as a nutritional supplement for OA and although numerous trials have been performed the clinical benefits and pain relief evidence is inconsistent (39). Variants in the parathyroid hormone-related protein (*PTH1LH*) gene are associated with hip OA (37). *PTH1LH* is involved in the regulation of endochondral bone development and its analogs are prescribed for osteoporosis because of their anabolic actions on bone formation (40). Subchondral bone remodelling is also a consistent feature in OA (17,18), and may provide a novel target for intervention in OA progression.

OA cannot be considered to be a single disease. The requirement for better phenotype definition and homogeneity in much larger sample sizes is a prerequisite for untangling the genetic complexity underlying pathogenesis and progression. Electronic health records provide an excellent opportunity as they provide the ability to study large sample sizes with a wealth of clinical information. Furthermore, longitudinal information can improve phenotype definition and depth, and coupled with large scale, can improve power.

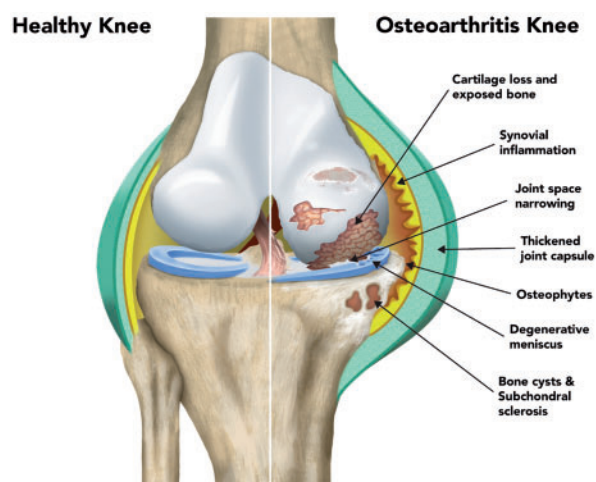
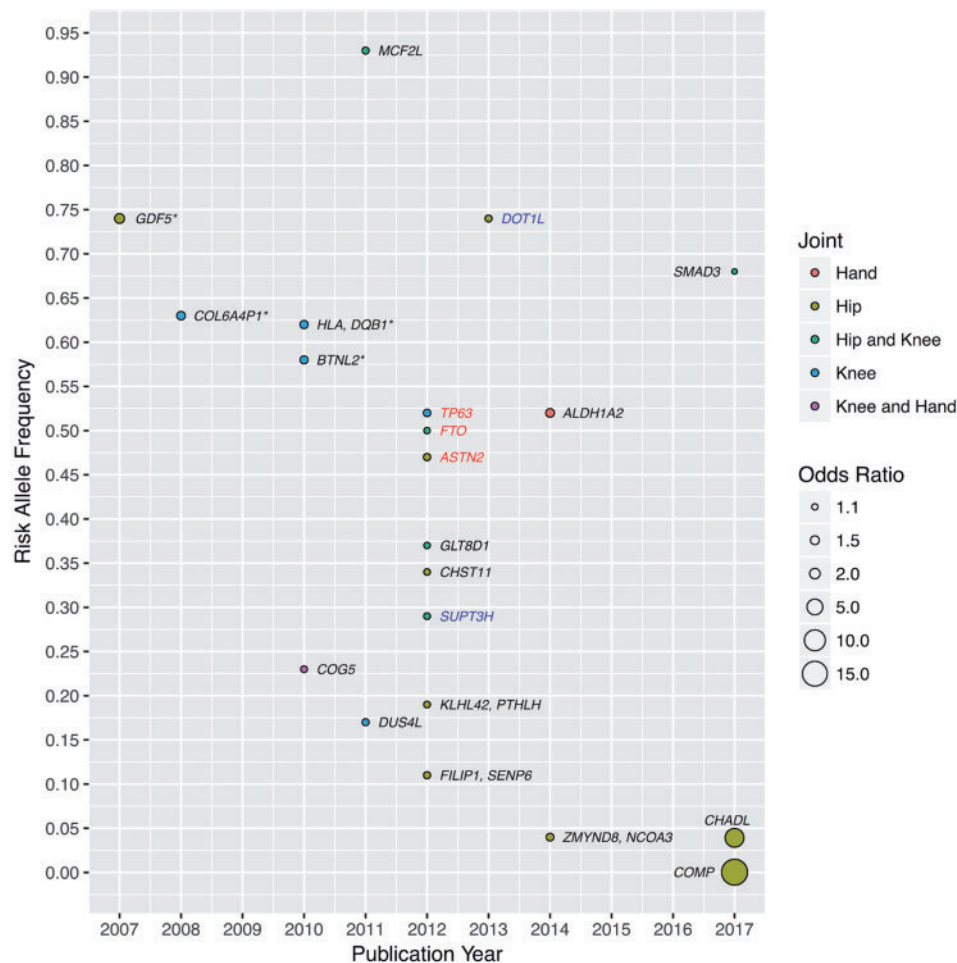


Figure 1. Illustration showing the key pathological features of osteoarthritis. The left side of the image shows the normal knee and the right side shows the diseased joint.



**Figure 2.** Established OA loci. Each locus is identified by the nearest gene(s) and coloured black to represent association in both sexes, blue for males only and red for females only. The discovery study population is of European descent unless indicated by an asterisk in which case the population is Asian (*BTNL2* was identified in a combined Asian and European analysis).

## Insights from Rare Musculoskeletal Diseases

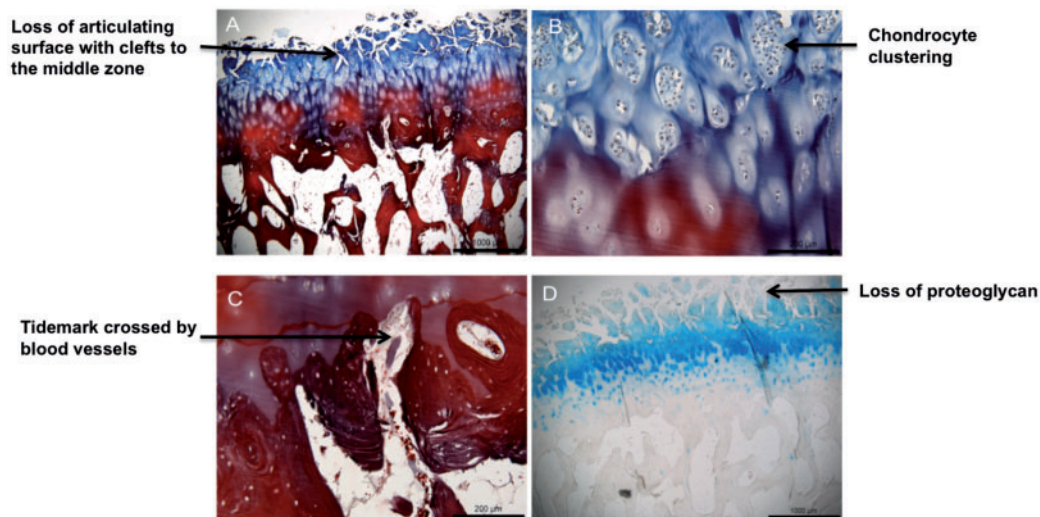
Studying severe phenotypes of rare diseases can shed insights into the mechanisms underpinning more common disorders and identify potential therapeutic targets, e.g. the study of rare bone disorders contributed to the development of bisphosphonates (41,42). Similarly, the study of rare cartilage syndromes and developmental skeletal dysplasias can glean insights into important genes and potential targets for OA (43,44).

## Pathway to Mechanism of Disease Progression

Unlike in most other common complex diseases, the relevant tissue for OA is readily accessible at joint replacement surgery. OA leads to changes in the joint tissue that can be captured macroscopically (Fig. 3). This provides an opportunity to study the key osteochondral unit components in order to identify signatures of disease progression. There has been great progress in understanding changes in the composition, functional properties and structure of the osteochondral unit during the evolution of OA (16,18), but it is important to also understand at the molecular level how interactions between cartilage and bone cells affect disease development.

Recent advances have signalled the development of high-resolution, high-throughput genome-wide technologies for assessing genome function, including spatial transcription (45–47), chromatin accessibility (48) and 3-dimensional conformation (49). The epigenome, transcriptome and proteome are unique for each tissue and cell type. Although systematic cataloguing of molecular maps has been carried out for many tissues (50–52), the landscape of cell types relevant to OA largely remains unknown. The accessibility of relevant tissue at joint replacement surgery enables the deployment of multi-omics to dissect the molecular disease processes in the right cells. Functional genomics is a nascent, but emerging, field in OA (53). Previous work has compared intact and degraded cartilage in modest numbers of patients (median  $n = 20$ ) (54), investigating genome-wide methylation (55–58), gene (57–60) and/or protein expression (58,61,62), primarily through microarray technologies. Despite overall limited replicability (due to design, technology and analysis differences), pathways such as WNT signalling, angiogenesis, immune response and matrix degradation have been implicated by more than one study (59–61,63–72). The molecular architecture of genome regulation underlying disease mechanisms in OA tissue, for example as elegantly demonstrated through the study of chromatin conformation in T and B-cells in rheumatoid arthritis (73,74), remains unclear.





**Figure 3.** Intact and degraded cartilage-bone interface (osteochondral unit). (A) Cartilage/bone interface showing fibrillation and loss of articular cartilage (blue); (B) magnified image showing clustering of chondrocytes in the deeper cartilage layers; (C) magnified image of the cartilage/bone interface showing blood vessels invading the cartilage layer; (D) loss of proteoglycan indicated by loss of Alcian blue staining.

### Integration of Genetics and Genomic Information

Despite progress in identifying genomic regions that harbour OA-associated variants, we know very little about the specific genes involved or the way in which they mediate changes in the joint. Most of the established OA loci discovered to date (75) reside in non-coding sequence, making their biological interpretation challenging. Indeed, even though >80% of all published complex disease loci are found outside of protein-coding exons (76–78), we still have a very limited understanding of the way in which they act on disease pathogenesis (50,79–81). Identification of the causal variants and the genes they affect requires experimental analysis of genome regulation in the right cell type. Evidence is emerging from targeted studies using cell lines and patient samples that OA risk variants are likely to exert their effects on gene expression levels (82–87). Integration of genetic and genomic information is required to define molecular mechanisms through which the non-coding variants underlying association signals exert their effects on OA susceptibility (88).

### Mechanistic Studies

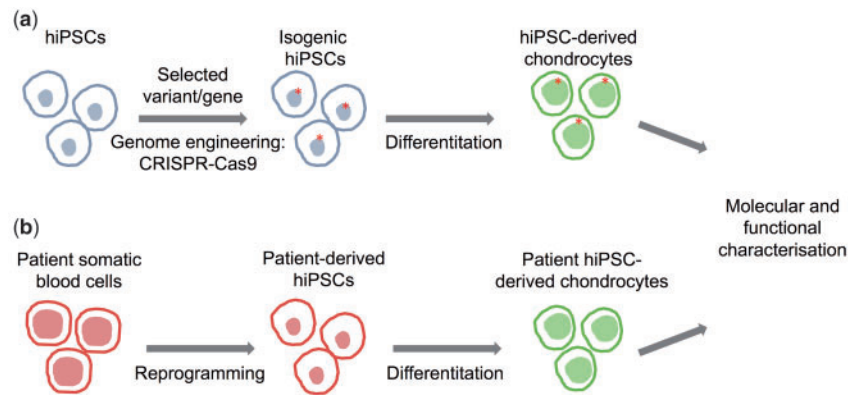
The molecular mechanisms linking sequence variation to cellular functions remain poorly described. To date, the characterization of OA-associated variants has mainly focused on the effect of the variant on the candidate target gene expression. Only a small number of studies have investigated the cellular and molecular mechanisms played by the identified OA susceptibility genes during OA development.

One of the best functionally characterized OA susceptibility signals is rs143383, which negatively affects the activity of the *GDF5* gene promoter, reducing the levels of *GDF5* expression (82,83,89). *GDF5*, a member of the BMP family and TGF- $\beta$  superfamily, plays a key role in chondrogenesis during joint development (90) and also in postnatal joint tissue homeostasis. Mice deficient in *GDF5* show severe joint damage, decreased subchondral bone density and abnormal arrangement of collagen fibres in the bone (91). Also, recent studies in human primary chondrocytes have shown that *GDF5* stimulation reduces the

expression of the matrix degrading enzymes MMP13 and ADAMTS4 (92), both implicated in cartilage extracellular matrix degradation in OA (93,94).

Other OA candidate genes studied in cellular or animal models are *RUNX2* (rs12206662/rs10948155, associated with hip cartilage thickness and hip OA) (95) and *DOT1L* (rs1298744, rs11880992, associated with hip cartilage thickness and hip OA) (95–97). For example, knocking down the expression of *Dot1l* in the chondrogenic cell line ATDC5 results in reduced chondrogenesis differentiation accompanied of up-regulation of matrix metalloproteinase 9, reduced collagen content and less sulphated proteoglycans, suggesting a protective role of *DOT1L* in OA development (96). Knocking out *Runx2* in articular chondrocytes in a mouse model of OA could rescue part of the cartilage degradation and subchondral sclerosis as well as reduce the expression of MMP13 (98).

Despite these recent advances, the mechanism of action of most OA susceptibility loci remains unknown. An important current effort to advance the systematic genetic, molecular and cellular functional study of genetic variation in OA is being carried out by the Origins of Bone and Cartilage Disease (OBCD) consortium, which carries out high-throughput musculoskeletal phenotyping of knockout mice (99). Cellular genetics and phenotyping models can further enhance our understanding of aetiopathogenesis. The combined use of human induced pluripotent stem cells (hiPSC) and genome editing technologies, such as the CRISPR-Cas9 (100) system, allows the targeted modification of the human genome and the generation of isogenic hiPSC lines that differ only at the specific gene or variant of interest (100–103). In the case of OA, the resulting hiPSC lines could then be differentiated towards chondrocytes (104,105), osteoblasts (106) or any other relevant cell type, creating a genetically controlled experimental model of OA. Such a model would allow the systematic study of the individual contribution of OA disease-associated variants to the disease molecular and cellular phenotype (Fig. 4). Furthermore, the possibility to derive hiPSCs from somatic cells from patients and differentiate them into disease-relevant cell types, for example chondrocytes, offers a unique opportunity to recapitulate human development and pathogenic processes.



**Figure 4.** Functional characterization of loci associated with osteoarthritis. Schema showing an approach to functionally characterize OA-associated variants and candidate target genes using isogenic hiPSC derived chondrocytes (A) and patient hiPSC-derived chondrocytes carrying the selected variant (B).

## Pathway to New Therapies for OA

Osteoarthritis is typically diagnosed on the basis of relevant clinical symptoms and signs, and corroborated with consistent radiographic features. No robust laboratory biomarkers exist for OA. Pharmacological therapies such as paracetamol and non-steroidal anti-inflammatory drugs can be effective in relieving pain but are incapable of reversing cartilage damage (107). In the absence of a curative therapy, management strategies currently focus on interventions early in the OA joint degeneration process and targeting disease progression (18), including emerging regenerative therapies that hold the potential to promote cartilage repair and ultimately restore the original tissue structure and function. A better understanding of the molecular processes underpinning OA in the joint will be crucial to inform and accelerate the success of this new generation of treatments.

## Future Perspective

There are currently no approved disease-modifying treatments available for OA and treatment focusses on surgical replacement of the diseased joint. However, the field of OA genetics and genomics is currently witnessing an exciting alignment of opportunities to deploy a multi-pronged attack to solve the current therapeutic impasse. These approaches include massive-scale genetics with linkage to deep clinical phenotypes and patient-reported pain indices through electronic health records, access to primary disease tissue following joint replacement surgery for deep characterization of the local molecular landscape and biomarker discovery, high-throughput genome editing techniques in primary and hiPSC-derived chondrocytes to pin down causal genes, coupling joint imaging to genomics, leveraging lessons from rare musculoskeletal disorders, and emerging regenerative medicine approaches. Taken together, these technologies have the potential to alter the natural history of OA and improve the lives of these patients in the same way that the introduction of biologic treatments has changed the lives of patients with inflammatory arthritis.

## Acknowledgements

The authors wish to thank Eleni Zengini and Dániel Süveges for their useful input.

*Conflict of Interest statement.* None declared.

## Funding

Funding to pay the Open Access publication charges for this article was provided by the Wellcome Trust.

## References

- Vos, T., Flaxman, A.D., Naghavi, M., Lozano, R., Michaud, C., Ezzati, M., Shibuya, K., Salomon, J.A., Abdalla, S., Aboyans, V. *et al.* (2012) Years lived with disability (YLDs) for 1160 sequelae of 289 diseases and injuries 1990–2010: a systematic analysis for the Global Burden of Disease Study 2010. *Lancet*, **380**, 2163–2196.
- Murray, C.J., Vos, T., Lozano, R., Naghavi, M., Flaxman, A.D., Michaud, C., Ezzati, M., Shibuya, K., Salomon, J.A., Abdalla, S. *et al.* (2012) Disability-adjusted life years (DALYs) for 291 diseases and injuries in 21 regions, 1990–2010: a systematic analysis for the Global Burden of Disease Study 2010. *Lancet*, **380**, 2197–2223.
- Cross, M., Smith, E., Hoy, D., Nolte, S., Ackerman, I., Fransen, M., Bridgett, L., Williams, S., Guillemin, F., Hill, C.L. *et al.* (2014) The global burden of hip and knee osteoarthritis: estimates from the global burden of disease 2010 study. *Ann. Rheum. Dis.*, **73**, 1323–1330.
- Kingsbury, S.R., Gross, H.J., Isherwood, G. and Conaghan, P.G. (2014) Osteoarthritis in Europe: impact on health status, work productivity and use of pharmacotherapies in five European countries. *Rheumatology (Oxford)*, **53**, 937–947.
- Hilingsmann, M. and Reginster, J.-Y. The economic weight of osteoarthritis in Europe <http://www.medicographia.com/2013/10/the-economic-weight-of-osteoarthritis-in-europe/>; date last accessed August 08, 2017.
- Dieppe, P.A. and Lohmander, L.S. (2005) Pathogenesis and management of pain in osteoarthritis. *Lancet*, **365**, 965–973.
- Hilingsmann, M., Cooper, C., Arden, N., Boers, M., Branco, J.C., Luisa Brandi, M., Bruyère, O., Guillemin, F., Hochberg, M.C., Hunter, D.J. *et al.* (2013) Health economics in the field of osteoarthritis: an expert's consensus paper from the European Society for Clinical and Economic Aspects of Osteoporosis and Osteoarthritis (ESCEO). *Semin. Arthritis Rheum.*, **43**, 303–313.
- Arthritis Research UK. Osteoarthritis in General Practice: Data and Perspectives. 2013.

9. Murphy, L., Schwartz, T.A., Helmick, C.G., Renner, J.B., Tudor, G., Koch, G., Dragomir, A., Kalsbeek, W.D., Luta, G. and Jordan, J.M. (2008) Lifetime risk of symptomatic knee osteoarthritis. *Arthritis Rheum.*, **59**, 1207–1213.
10. Eurostat: Surgical operations and procedures performed in hospitals. [http://appsso.eurostat.ec.europa.eu/nui/show.do?dataset=hlth\\_co\\_proc2&lang=en](http://appsso.eurostat.ec.europa.eu/nui/show.do?dataset=hlth_co_proc2&lang=en); date last accessed August 08, 2017.
11. Robertsson, O., Dunbar, M., Pehrsson, T., Knutson, K. and Lidgren, L. (2000) Patient satisfaction after knee arthroplasty: a report on 27, 372 knees operated on between 1981 and 1995 in Sweden. *Acta Orthop. Scand.*, **71**, 262–267.
12. Baker, P.N., van der Meulen, J.H., Lewsey, J. and Gregg, P.J. (2007) National Joint Registry for E, Wales. The role of pain and function in determining patient satisfaction after total knee replacement. Data from the National Joint Registry for England and Wales. *J. Bone Joint Surg. Br.*, **89**, 893–900.
13. Baker, P.N., Deehan, D.J., Lees, D., Jameson, S., Avery, P.J., Gregg, P.J. and Reed, M.R. (2012) The effect of surgical factors on early patient-reported outcome measures (PROMS) following total knee replacement. *J. Bone Joint Surg. Br.*, **94**, 1058–1066.
14. Hunter, D.J. (2011) Pharmacologic therapy for osteoarthritis—the era of disease modification. *Nat. Rev. Rheumatol.*, **7**, 13–22.
15. Scanzello, C.R. and Goldring, S.R. (2012) The role of synovitis in osteoarthritis pathogenesis. *Bone*, **51**, 249–257.
16. Goldring, S.R. and Goldring, M.B. (2016) Changes in the osteochondral unit during osteoarthritis: structure, function and cartilage–bone crosstalk. *Nat. Rev. Rheumatol.*, **12**, 632–644.
17. Man, G.S. and Mologhianu, G. (2014) Osteoarthritis pathogenesis - a complex process that involves the entire joint. *J. Med. Life*, **7**, 37–41.
18. Glyn-Jones, S., Palmer, A.J., Agricola, R., Price, A.J., Vincent, T.L., Weinans, H. and Carr, A.J.R. (2015) Osteoarthritis. *Lancet*, **386**, 376–387.
19. Felson, D.T., Naimark, A., Anderson, J., Kazis, L., Castelli, W. and Meenan, R.F. (1987) The prevalence of knee osteoarthritis in the elderly. The Framingham Osteoarthritis Study. *Arthritis. Rheum.*, **30**, 914–918.
20. Dillon, C.F., Rasch, E.K., Gu, Q. and Hirsch, R. (2006) Prevalence of knee osteoarthritis in the United States: arthritis data from the Third National Health and Nutrition Examination Survey 1991–94. *J. Rheumatol.*, **33**, 2271–2279.
21. van Saase, J.L., van Romunde, L.K., Cats, A., Vandenbroucke, J.P. and Valkenburg, H.A. (1989) Epidemiology of osteoarthritis: Zoetermeer survey. Comparison of radiological osteoarthritis in a Dutch population with that in 10 other populations. *Ann. Rheum. Dis.*, **48**, 271–280.
22. Oliveria, S.A., Felson, D.T., Reed, J.I., Cirillo, P.A. and Walker, A.M. (1995) Incidence of symptomatic hand, hip, and knee osteoarthritis among patients in a health maintenance organization. *Arthritis. Rheum.*, **38**, 1134–1141.
23. Felson, D.T., Zhang, Y., Hannan, M.T., Naimark, A., Weissman, B., Aliabadi, P. and Levy, D. (1997) Risk factors for incident radiographic knee osteoarthritis in the elderly: the Framingham Study. *Arthritis Rheum.*, **40**, 728–733.
24. Anderson, J.J. and Felson, D.T. (1988) Factors associated with osteoarthritis of the knee in the first national Health and Nutrition Examination Survey (HANES I). Evidence for an association with overweight, race, and physical demands. *Am. J. Epidemiol.*, **128**, 179–189.
25. Cooper, C., Snow, S., McAlindon, T.E., Kellingray, S., Stuart, B., Coggon, D. and Dieppe, P.A. (2000) Risk factors for the incidence and progression of radiographic knee osteoarthritis. *Arthritis. Rheum.*, **43**, 995–1000.
26. Blagojevic, M., Jinks, C., Jeffery, A. and Jordan, K.P. (2010) Risk factors for onset of osteoarthritis of the knee in older adults: a systematic review and meta-analysis. *Osteoarthr. Cartil.*, **18**, 24–33.
27. Spector, T.D., Cicuttini, F., Baker, J., Loughlin, J. and Hart, D. (1996) Genetic influences on osteoarthritis in women: a twin study [see comments]. *BMJ*, **312**, 940–943.
28. Spector, T.D. and MacGregor, A.J. (2004) Risk factors for osteoarthritis: genetics. *Osteoarthr. Cartil.*, **12 Suppl A**, S39–S44.
29. MacGregor, A.J., Li, Q., Spector, T.D. and Williams, F.M. (2009) The genetic influence on radiographic osteoarthritis is site specific at the hand, hip and knee. *Rheumatology (Oxford)*, **48**, 277–280.
30. Valdes, A.M. and Spector, T.D. (2011) Genetic epidemiology of hip and knee osteoarthritis. *Nat. Rev. Rheumatol.*, **7**, 23–32.
31. Styrkarsdottir, U., Helgason, H., Sigurdsson, A., Norddahl, G.L., Agustsdottir, A.B., Reynard, L.N., Villalvilla, A., Halldorsson, G.H., Jonasdottir, A., Magnusdottir, A. et al. (2017) Whole-genome sequencing identifies rare genotypes in COMP and CHADL associated with high risk of hip osteoarthritis. *Nat. Genet.*, **49**, 801–805.
32. Acharya, C., Yik, J.H., Kishore, A., Van Dinh, V., Di Cesare, P.E. and Haudenschild, D.R. (2014) Cartilage oligomeric matrix protein and its binding partners in the cartilage extracellular matrix: interaction, regulation and role in chondrogenesis. *Matrix Biol.*, **37**, 102–111.
33. Das, B.R., Roy, A. and Khan, F.R. (2015) Cartilage oligomeric matrix protein in monitoring and prognostication of osteoarthritis and its utility in drug development. *Perspect. Clin. Res.*, **6**, 4–9.
34. Verma, P. and Dalal, K. (2013) Serum cartilage oligomeric matrix protein (COMP) in knee osteoarthritis: a novel diagnostic and prognostic biomarker. *J. Orthop. Res.*, **31**, 999–1006.
35. Tillgren, V., Ho, J.C., Onnerfjord, P. and Kalamajski, S. (2015) The novel small leucine-rich protein chondroadherin-like (CHADL) is expressed in cartilage and modulates chondrocyte differentiation. *J. Biol. Chem.*, **290**, 918–925.
36. Hackinger, S., Trajanoska, K., Styrkarsdottir, U., Zengini, E., Steinberg, S., Ritchie, G.R.S., Hatzikotoulas, K., Gilly, A., Evangelou, E., Kemp, J.P. et al. (2017) Evaluation of shared genetic aetiology between osteoarthritis and bone mineral density identifies SMAD3 as a novel osteoarthritis risk locus. *Hum. Mol. Genet.*, **26**, 3850–3858.
37. Zeggini, E., Panoutsopoulou, K., Southam, L., Rayner, N.W., Day-Williams, A.G., Lopes, M.C., Boraska, V., Esko, T., Evangelou, E., Hoffman, A., arcOGEN Consortium, arcOGEN Collaborators. et al. (2012) Identification of new susceptibility loci for osteoarthritis (arcOGEN): a genome-wide association study. *Lancet*, **380**, 815–823.
38. Freilinger, T., Anttila, V., de Vries, B., Malik, R., Kallela, M., Terwindt, G.M., Pozo-Rosich, P., Winsvold, B., Nyholt, D.R., van Oosterhout, W.P. et al. (2012) Genome-wide association analysis identifies susceptibility loci for migraine without aura. *Nat. Genet.*, **44**, 777–782.
39. Uebelhart, D. (2008) Clinical review of chondroitin sulfate in osteoarthritis. *Osteoarthritis Cartilage*, **16 Suppl 3**, S19–S21.
40. Esbrit, P., Herrera, S., Portal-Nunez, S., Nogues, X. and Diez-Perez, A. (2016) Parathyroid hormone-related protein analogs as osteoporosis therapies. *Calcif. Tissue Int.*, **98**, 359–369.
41. Bonjour, J.P. and Fleisch, H.A. (1973) Diphosphonates and vitamin-D metabolism in Paget's disease. *Lancet*, **2**, 375–376.



42. Fleisch, H. and Bisaz, S. (1962) Mechanism of calcification: inhibitory role of pyrophosphate. *Nature*, **195**, 911.
43. Thomas, J.T., Lin, K., Nandedkar, M., Camargo, M., Cervenka, J. and Luyten, F.P. (1996) A human chondrodysplasia due to a mutation in a TGF-beta superfamily member. *Nat. Genet.*, **12**, 315–317.
44. Rouault, K., Scotet, V., Autret, S., Gaucher, F., Dubrana, F., Tanguy, D., El Rassi, C.Y., Fenoll, B. and Férec, C. (2010) Evidence of association between GDF5 polymorphisms and congenital dislocation of the hip in a Caucasian population. *Osteoarthr. Cartil.*, **18**, 1144–1149.
45. Stahl, P.L., Salmen, F., Vickovic, S., Lundmark, A., Navarro, J.F., Magnusson, J., Giacomello, S., Asp, M., Westholm, J.O., Huss, M. et al. (2016) Visualization and analysis of gene expression in tissue sections by spatial transcriptomics. *Science*, **353**, 78–82.
46. Mortazavi, A., Williams, B.A., McCue, K., Schaeffer, L. and Wold, B. (2008) Mapping and quantifying mammalian transcriptomes by RNA-Seq. *Nat. Methods*, **5**, 621–628.
47. Nagalakshmi, U., Wang, Z., Waern, K., Shou, C., Raha, D., Gerstein, M. and Snyder, M. (2008) The transcriptional landscape of the yeast genome defined by RNA sequencing. *Science*, **320**, 1344–1349.
48. Buenrostro, J.D., Giresi, P.G., Zaba, L.C., Chang, H.Y. and Greenleaf, W.J. (2013) Transposition of native chromatin for fast and sensitive epigenomic profiling of open chromatin, DNA-binding proteins and nucleosome position. *Nat. Methods*, **10**, 1213–1218.
49. Dekker, J., Marti-Renom, M.A. and Mirny, L.A. (2013) Exploring the three-dimensional organization of genomes: interpreting chromatin interaction data. *Nat. Rev. Genet.*, **14**, 390–403.
50. Encode Project Consortium (2012) An integrated encyclopedia of DNA elements in the human genome. *Nature*, **489**, 57–74.
51. Stunnenberg, H.G., International Human Epigenome, C. and Hirst, M. (2016) The International Human Epigenome Consortium: A Blueprint for Scientific Collaboration and Discovery. *Cell*, **167**, 1145–1149.
52. Kundaje, A., Meuleman, W., Ernst, J., Bilenky, M., Yen, A., Heravi-Moussavi, A., Kheradpour, P., Zhang, Z., Wang, J., Ziller, M.J. et al. (2015) Integrative analysis of 111 reference human epigenomes. *Nature*, **518**, 317–330.
53. Meulenbelt, I.M., Bhutani, N., den Hollander, W., Gay, S., Oppermann, U., Reynard, L.N., Skelton, A.J., Young, D.A., Beier, F. and Loughlin, J. (2017) The first international workshop on the epigenetics of osteoarthritis. *Connect. Tissue Res.*, **58**, 37–48.
54. Steinberg, J. and Zeggini, E. (2016) Functional Genomics in Osteoarthritis: Past, Present, and Future. *J. Orthop. Res.*, **34**, 1105–1110.
55. Jeffries, M.A., Donica, M., Baker, L.W., Stevenson, M.E., Annan, A.C., Humphrey, M.B., James, J.A. and Sawalha, A.H. (2014) Genome-wide DNA methylation study identifies significant epigenomic changes in osteoarthritic cartilage. *Arthritis Rheumatol.*, **66**, 2804–2815.
56. Moazed-Fuerst, F.C., Hofner, M., Gruber, G., Weinhaeusel, A., Stradner, M.H., Angerer, H., Peischler, D., Lohberger, B., Glehr, M., Leithner, A. et al. (2014) Epigenetic differences in human cartilage between mild and severe OA. *J. Orthop. Res.*, **32**, 1636–1645.
57. den Hollander, W., Ramos, Y.F., Bos, S.D., Bomer, N., van der Breggen, R., Lakenberg, N., de Dijcker, W.J., Duijnisveld, B.J., Slagboom, P.E., Nelissen, R.G. et al. (2014) Knee and hip articular cartilage have distinct epigenomic landscapes: implications for future cartilage regeneration approaches. *Ann. Rheum. Dis.*, **73**, 2208–2212.
58. Steinberg, J., Ritchie, G.R.S., Roumeliotis, T.I., Jayasuriya, R.L., Brooks, R.A., Binch, A.L.A., Shah, K.M., Coyle, R., Pardo, M., Le Maitre, C.L. et al. Integrative epigenomics, transcriptomics and proteomics of patient chondrocytes reveal genes and pathways involved in osteoarthritis. *bioRxiv* 2016, doi: <https://doi.org/10.1101/038067>.
59. Karlsson, C., Dehne, T., Lindahl, A., Brittberg, M., Pruss, A., Sittlinger, M. and Ringe, J. (2010) Genome-wide expression profiling reveals new candidate genes associated with osteoarthritis. *Osteoarthr. Cartil.*, **18**, 581–592.
60. Tew, S.R., McDermott, B.T., Fentem, R.B., Peffers, M.J. and Clegg, P.D. (2014) Transcriptome-wide analysis of messenger RNA decay in normal and osteoarthritic human articular chondrocytes. *Arthritis Rheumatol.*, **66**, 3052–3061.
61. Stenberg, J., Rüetschi, U., Skiöldebrand, E., Kärrholm, J. and Lindahl, A. (2013) Quantitative proteomics reveals regulatory differences in the chondrocyte secretome from human medial and lateral femoral condyles in osteoarthritic patients. *Proteome Sci.*, **11**, 43.
62. Ruiz-Romero, C., Fernandez-Puente, P., Calamia, V. and Blanco, F.J. (2015) Lessons from the proteomic study of osteoarthritis. *Expert Rev. Proteomics*, **12**, 433–443.
63. Chou, C.H., Lee, M.T., Song, I.W., Lu, L.S., Shen, H.C., Lee, C.H., Wu, J.Y., Chen, Y.T., Kraus, V.B. and Wu, C.C. (2015) Insights into osteoarthritis progression revealed by analyses of both knee tibiofemoral compartments. *Osteoarthr. Cartil.*, **23**, 571–580.
64. Delgado-Calle, J., Fernández, A.F., Sainz, J., Zarrabeitia, M.T., Sañudo, C., García-Renedo, R., Pérez-Núñez, M.I., García-Ibarbia, C., Fraga, M.F. and Riancho, J.A. (2013) Genome-wide profiling of bone reveals differentially methylated regions in osteoporosis and osteoarthritis. *Arthritis Rheumatol.*, **65**, 197–205.
65. Fernández-Tajes, J., Soto-Hermida, A., Vázquez-Mosquera, M.E., Cortés-Pereira, E., Mosquera, A., Fernández-Moreno, M., Oreiro, N., Fernández-López, C., Fernández, J.L., Rego-Pérez, I. and Blanco, F.J. (2014) Genome-wide DNA methylation analysis of articular chondrocytes reveals a cluster of osteoarthritic patients. *Ann. Rheum. Dis.*, **73**, 668–677.
66. Gobezie, R., Kho, A., Krastins, B., Sarracino, D.A., Thornhill, T.S., Chase, M., Millett, P.J. and Lee, D.M. (2007) High abundance synovial fluid proteome: distinct profiles in health and osteoarthritis. *Arthritis Res. Ther.*, **9**, R36.
67. Hopwood, B., Tsykin, A., Findlay, D.M. and Fazzalari, N.L. (2007) Microarray gene expression profiling of osteoarthritic bone suggests altered bone remodelling, WNT and transforming growth factor-beta/bone morphogenic protein signalling. *Arthritis Res. Ther.*, **9**, R100.
68. Lamas, J.R., Rodríguez-Rodríguez, L., Vigo, A.G., Alvarez-Lafuente, R., López-Romero, P., Marco, F., Camafeita, E., Dopazo, A., Callejas, S., Villafuertes, E. et al. (2010) Large-scale gene expression in bone marrow mesenchymal stem cells: a putative role for COL10A1 in osteoarthritis. *Ann. Rheum. Dis.*, **69**, 1880–1885.
69. Lambert, C., Dubuc, J.E., Montell, E., Vergés, J., Munaut, C., Noël, A. and Henrotin, Y. (2014) Gene expression pattern of cells from inflamed and normal areas of osteoarthritis synovial membrane. *Arthritis Rheumatol.*, **66**, 960–968.
70. Ritter, S.Y., Subbaiah, R., Bebek, G., Crish, J., Scanzello, C.R., Krastins, B., Sarracino, D., Lopez, M.F., Crow, M.K., Aigner, T. et al. (2013) Proteomic analysis of synovial fluid from the

- osteoarthritic knee: comparison with transcriptome analyses of joint tissues. *Arthritis Rheumatol.*, **65**, 981–992.
71. Rushton, M.D., Reynard, L.N., Barter, M.J., Refaie, R., Rankin, K.S., Young, D.A. and Loughlin, J. (2014) Characterization of the cartilage DNA methylome in knee and hip osteoarthritis. *Arthritis Rheumatol.*, **66**, 2450–2460.
  72. Xu, Y., Barter, M.J., Swan, D.C., Rankin, K.S., Rowan, A.D., Santibanez-Koref, M., Loughlin, J. and Young, D.A. (2012) Identification of the pathogenic pathways in osteoarthritic hip cartilage: commonality and discord between hip and knee OA. *Osteoarthr. Cartil.*, **20**, 1029–1038.
  73. Martin, P., McGovern, A., Orozco, G., Duffus, K., Yarwood, A., Schoenfelder, S., Cooper, N.J., Barton, A., Wallace, C., Fraser, P. et al. (2015) Capture Hi-C reveals novel candidate genes and complex long-range interactions with related autoimmune risk loci. *Nat. Commun.*, **6**, 10069.
  74. McGovern, A., Schoenfelder, S., Martin, P., Massey, J., Duffus, K., Plant, D., Yarwood, A., Pratt, A.G., Anderson, A.E., Isaacs, J.D. et al. (2016) Capture Hi-C identifies a novel causal gene, IL20RA, in the pan-autoimmune genetic susceptibility region 6q23. *Genome Biol.*, **17**, 212.
  75. Zengini, E., Finan, C. and Wilkinson, J.M. (2016) The genetic epidemiological landscape of hip and knee osteoarthritis: where are we now and where are we going?. *J. Rheumatol.*, **43**, 260–266.
  76. Pickrell, J.K. (2014) Joint analysis of functional genomic data and genome-wide association studies of 18 human traits. *Am. J. Hum. Genet.*, **94**, 559–573.
  77. Welter, D., MacArthur, J., Morales, J., Burdett, T., Hall, P., Junkins, H., Klemm, A., Flicek, P., Manolio, T., Hindorff, L. et al. (2014) The NHGRI GWAS Catalog, a curated resource of SNP-trait associations. *Nucleic Acids Res.*, **42**, D1001–D1006.
  78. Hindorff, L.A., Sethupathy, P., Junkins, H.A., Ramos, E.M., Mehta, J.P., Collins, F.S. and Manolio, T.A. (2009) Potential etiologic and functional implications of genome-wide association loci for human diseases and traits. *Proc. Natl. Acad. Sci. U.S.A.*, **106**, 9362–9367.
  79. McVicker, G., van de Geijn, B., Degner, J.F., Cain, C.E., Banovich, N.E., Raj, A., Lewellen, N., Myrthil, M., Gilad, Y. and Pritchard, J.K. (2013) Identification of genetic variants that affect histone modifications in human cells. *Science*, **342**, 747–749.
  80. Ernst, J., Kheradpour, P., Mikkelsen, T.S., Shores, N., Ward, L.D., Epstein, C.B., Zhang, X., Wang, L., Issner, R., Coyne, M. et al. (2011) Mapping and analysis of chromatin state dynamics in nine human cell types. *Nature*, **473**, 43–49.
  81. Schaub, M.A., Boyle, A.P., Kundaje, A., Batzoglou, S. and Snyder, M. (2012) Linking disease associations with regulatory information in the human genome. *Genome Res.*, **22**, 1748–1759.
  82. Miyamoto, Y., Mabuchi, A., Shi, D., Kubo, T., Takatori, Y., Saito, S., Fujioka, M., Sudo, A., Uchida, A., Yamamoto, S. et al. (2007) A functional polymorphism in the 5' UTR of GDF5 is associated with susceptibility to osteoarthritis. *Nat. Genet.*, **39**, 529–533.
  83. Reynard, L.N., Bui, C., Canty-Laird, E.G., Young, D.A. and Loughlin, J. (2011) Expression of the osteoarthritis-associated gene GDF5 is modulated epigenetically by DNA methylation. *Hum. Mol. Genet.*, **20**, 3450–3460.
  84. Syddall, C.M., Reynard, L.N., Young, D.A. and Loughlin, J. (2013) The identification of trans-acting factors that regulate the expression of GDF5 via the osteoarthritis susceptibility SNP rs143383. *PLoS Genet.*, **9**, e1003557.
  85. Bos, S.D., Bovée, J.V., Duijnisveld, B.J., Raine, E.V., van Dalen, W.J., Ramos, Y.F., van der Breggen, R., Nelissen, R.G., Slagboom, P.E., Loughlin, J. et al. (2012) Increased type II deiodinase protein in OA-affected cartilage and allelic imbalance of OA risk polymorphism rs225014 at DIO2 in human OA joint tissues. *Ann. Rheum. Dis.*, **71**, 1254–1258.
  86. Egli, R.J., Southam, L., Wilkins, J.M., Lorenzen, I., Pombo-Suarez, M., Gonzalez, A., Carr, A., Chapman, K. and Loughlin, J. (2009) Functional analysis of the osteoarthritis susceptibility-associated GDF5 regulatory polymorphism. *Arthritis Rheum.*, **60**, 2055–2064.
  87. Styrkarsdottir, U., Thorleifsson, G., Helgadóttir, H.T., Bomer, N., Metrustry, S., Bierma-Zeinstra, S., Strijbosch, A.M., Evangelou, E., Hart, D., Beekman, M. et al. (2014) Severe osteoarthritis of the hand associates with common variants within the ALDH1A2 gene and with rare variants at 1p31. *Nat. Genet.*, **46**, 498–502.
  88. Gaulton, K.J., Ferreira, T., Lee, Y., Raimondo, A., Mägi, R., Reschen, M.E., Mahajan, A., Locke, A., Rayner, N.W., Robertson, N. et al. (2015) Genetic fine mapping and genomic annotation defines causal mechanisms at type 2 diabetes susceptibility loci. *Nat. Genet.*, **47**, 1415–1425.
  89. Southam, L., Rodriguez-Lopez, J., Wilkins, J.M., Pombo-Suarez, M., Snelling, S., Gomez-Reino, J.J., Chapman, K., Gonzalez, A. and Loughlin, J. (2007) An SNP in the 5'-UTR of GDF5 is associated with osteoarthritis susceptibility in Europeans and with in vivo differences in allelic expression in articular cartilage. *Hum. Mol. Genet.*, **16**, 2226–2232.
  90. Francis-West, P.H., Abdelfattah, A., Chen, P., Allen, C., Parish, J., Ladher, R., Allen, S., MacPherson, S., Luyten, F.P. and Archer, C.W. (1999) Mechanisms of GDF-5 action during skeletal development. *Development*, **126**, 1305–1315.
  91. Daans, M., Luyten, F.P. and Lories, R.J. (2011) GDF5 deficiency in mice is associated with instability-driven joint damage, gait and subchondral bone changes. *Ann. Rheum. Dis.*, **70**, 208–213.
  92. Enochson, L., Stenberg, J., Brittberg, M. and Lindahl, A. (2014) GDF5 reduces MMP13 expression in human chondrocytes via DKK1 mediated canonical Wnt signaling inhibition. *Osteoarthr. Cartil.*, **22**, 566–577.
  93. Song, R.H., Tortorella, M.D., Malfait, A.M., Alston, J.T., Yang, Z., Arner, E.C. and Griggs, D.W. (2007) Aggrecan degradation in human articular cartilage explants is mediated by both ADAMTS-4 and ADAMTS-5. *Arthritis Rheum.*, **56**, 575–585.
  94. Tetlow, L.C., Adlam, D.J. and Woolley, D.E. (2001) Matrix metalloproteinase and proinflammatory cytokine production by chondrocytes of human osteoarthritic cartilage: associations with degenerative changes. *Arthritis Rheum.*, **44**, 585–594.
  95. Castaño-Betancourt, M.C., Evans, D.S., Ramos, Y.F., Boer, C.G., Metrustry, S., Liu, Y., den Hollander, W., van Rooij, J., Kraus, V.B., Yau, M.S. et al. (2016) Novel Genetic Variants for Cartilage Thickness and Hip Osteoarthritis. *PLoS Genet.*, **12**, e1006260.
  96. Castaño Betancourt, M.C., Cailotto, F., Kerkhof, H.J., Cornelis, F.M., Doherty, S.A., Hart, D.J., Hofman, A., Luyten, F.P., Maciewicz, R.A., Mangino, M. et al. (2012) Genome-wide association and functional studies identify the DOT1L gene to be involved in cartilage thickness and hip osteoarthritis. *Proc. Natl. Acad. Sci. U.S.A.*, **109**, 8218–8223.
  97. Evangelou, E., Valdes, A.M., Castano-Betancourt, M.C., Doherty, M., Doherty, S., Esko, T., Ingvarsson, T., Ioannidis, J.P., Kloppenburg, M., Metspalu, A. et al. (2013) The DOT1L rs12982744 polymorphism is associated with osteoarthritis



- of the hip with genome-wide statistical significance in males. *Ann. Rheum. Dis.*, **72**, 1264–1265.
98. Liao, L., Zhang, S., Gu, J., Takarada, T., Yoneda, Y., Huang, J., Zhao, L., Oh, C.D., Li, J., Wang, B. et al. (2017) Deletion of Runx2 in articular chondrocytes decelerates the progression of DMM-induced osteoarthritis in adult mice. *Sci. Rep.*, **7**, 2371.
  99. Origins of Bone and Cartilage Disease consortium. <http://www.boneandcartilage.com/>. I; date last accessed August 08, 2017.
  100. Ding, Q., Regan, S.N., Xia, Y., Oostrom, L.A., Cowan, C.A. and Musunuru, K. (2013) Enhanced efficiency of human pluripotent stem cell genome editing through replacing TALENs with CRISPRs. *Cell Stem Cell*, **12**, 393–394.
  101. Cong, L., Ran, F.A., Cox, D., Lin, S., Barretto, R., Habib, N., Hsu, P.D., Wu, X., Jiang, W., Marraffini, L.A. et al. (2013) Multiplex genome engineering using CRISPR/Cas systems. *Science*, **339**, 819–823.
  102. Jinek, M., East, A., Cheng, A., Lin, S., Ma, E. and Doudna, J. (2013) RNA-programmed genome editing in human cells. *Elife*, **2**, e00471.
  103. Mali, P., Yang, L., Esvelt, K.M., Aach, J., Guell, M., DiCarlo, J.E., Norville, J.E. and Church, G.M. (2013) RNA-guided human genome engineering via Cas9. *Science*, **339**, 823–826.
  104. Cheng, A., Kapacee, Z., Peng, J., Lu, S., Lucas, R.J., Hardingham, T.E. and Kimber, S.J. (2014) Cartilage repair using human embryonic stem cell-derived chondroprogenitors. *Stem Cells Transl. Med.*, **3**, 1287–1294.
  105. Craft, A.M., Rockel, J.S., Nartiss, Y., Kandel, R.A., Alman, B.A. and Keller, G.M. (2015) Generation of articular chondrocytes from human pluripotent stem cells. *Nat. Biotechnol.*, **33**, 638–645.
  106. Phillips, M.D., Kuznetsov, S.A., Cherman, N., Park, K., Chen, K.G., McClendon, B.N., Hamilton, R.S., McKay, R.D., Chenoweth, J.G., Mallon, B.S. et al. (2014) Directed differentiation of human induced pluripotent stem cells toward bone and cartilage: in vitro versus in vivo assays. *Stem Cells Transl. Med.*, **3**, 867–878.
  107. Zhang, W., Ouyang, H., Dass, C.R. and Xu, J. (2016) Current research on pharmacologic and regenerative therapies for osteoarthritis. *Bone Res.*, **4**, 15040.