

This is a repository copy of *A chrono-cultural reassessment of El Cuco rock-shelter: a new sequence for the Late Middle Paleolithic in the Cantabrian Region (northern Iberia)*.

White Rose Research Online URL for this paper:

<https://eprints.whiterose.ac.uk/121351/>

Version: Accepted Version

Article:

Gutiérrez-Zugasti, Igor, Ríos-Garaizar, Joseba, Marín-Arroyo, Ana B et al. (5 more authors) (2017) A chrono-cultural reassessment of El Cuco rock-shelter: a new sequence for the Late Middle Paleolithic in the Cantabrian Region (northern Iberia). *Quaternary International*. ISSN 1040-6182

<https://doi.org/10.1016/j.quaint.2017.06.059>

Reuse

This article is distributed under the terms of the Creative Commons Attribution-NonCommercial-NoDerivs (CC BY-NC-ND) licence. This licence only allows you to download this work and share it with others as long as you credit the authors, but you can't change the article in any way or use it commercially. More information and the full terms of the licence here: <https://creativecommons.org/licenses/>

Takedown

If you consider content in White Rose Research Online to be in breach of UK law, please notify us by emailing eprints@whiterose.ac.uk including the URL of the record and the reason for the withdrawal request.

A chrono-cultural reassessment of the levels VI-XIV from El Cuco rock-shelter: a new sequence for the Late Middle Paleolithic in the Cantabrian Region (northern Iberia)^A

Igor Gutiérrez-Zugasti¹, Joseba Rios-Garaizar², Ana B. Marín-Arroyo¹, Pedro Rasines³, Julià Maroto³, Jennifer Jones¹, Geoffrey N. Bailey⁴, Michael Richards⁵

¹Instituto Internacional de Investigaciones Prehistóricas de Cantabria (IIIPC), Universidad de Cantabria, Edif. Interfacultativo, Avda. Los Castros, s/n, 39005 Santander, Cantabria, Spain.

²Centro Nacional de Investigación de la Evolución Humana. Paseo de la Sierra de Atapuerca, 3, 09002 Burgos, Spain.

³Grup d'Arqueologia i Prehistòria Universitat de Girona, pl. Ferrater Mora, 1, 17071 Girona, Spain

⁴Department of Archaeology, University of York, King's Manor YO1 7EP, York, UK

⁵Department of Anthropology, University of British Columbia, 6303 NW Marine Drive, Vancouver, BC V6T1Z1, Canada

Abstract

A large number of sites dated to the Late Middle Paleolithic and the Early Upper Paleolithic have been recorded in the Cantabrian region (northern Iberia), making this area a key location to investigate the lifeways of the last Neanderthals and the first anatomically modern humans. The stratigraphic sequence from El Cuco rock-shelter was originally attributed to the Early Upper Paleolithic based on radiocarbon dates measured on bone apatite. However, new radiocarbon dates on shell carbonates from the lower levels produced inconsistent dates with those previously published. In order to clarify this anomaly, a reassessment of the chronology of levels VI to XIV was undertaken. The review was based on new radiocarbon dates performed on bones and shells, and a re-evaluation of the lithic assemblages. Bone samples did not produce radiocarbon dates due to a lack of collagen preservation but radiocarbon dating of shell carbonates provided dates ranging from 42.3 to 46.4 ka BP. These dates are significantly older than that previously obtained for level XIII using biogenic apatite from bones (~30 ka uncal BP), suggesting that the bone apatite used for radiocarbon dating was rejuvenated due to contamination with secondary carbonate. Lithic assemblages, defined in the first place as Evolved Aurignacian, have now been confidently attributed to the Mousterian techno-complex. These results suggest a Middle Paleolithic chronology for this part of the sequence. The new chronology proposed for El Cuco rock-shelter has significant implications for the interpretation of Neanderthal subsistence strategies and settlement patterns, especially for coastal settlement and use of marine resources, not only in northern Iberia, but also in Atlantic Europe.

Keywords: radiocarbon, shell, bone, chronology, Mousterian, Iberia

^A Published online on 21 July 2017 as Gutiérrez-Zugasti, I., et al., A chrono-cultural reassessment of the levels VI–XIV from El Cuco rockshelter: A new sequence for the Late Middle Paleolithic in the Cantabrian region (northern Iberia), *Quaternary International* (2017), <http://dx.doi.org/10.1016/j.quaint.2017.06.059>

1. Introduction

The Cantabrian Region (northern Iberia) is a key location to investigate important questions about human evolution, such as the behavioral variability and demise of Neanderthal populations, the expansion of Modern Humans towards Western Europe, and the origins of symbolic behavior, among others. This region contains good examples of Late Mousterian cave sites, including El Esquilleu, El Sidrón, Sopenña, El Castillo, Cueva Morín, Covalejos or Axló, to name but a few (Baena et al., 2012; Pinto-Llona et al., 2012; Wood et al., 2013; Sánchez-Fernández and Bernaldo de Quirós, 2008; Maíllo-Fernández, 2007; Sanguino and Montes 2005; González-Urquijo et al., 2005; Rios-Garaizar, 2012a; 2016; Santamaría et al., 2010), several cave and open air Châtelperronian sites, as Cueva Morín, Aranbaltza and Labeko Koba (Arrizabalaga 2000, Maíllo-Fernández 2005, Rios-Garaizar et al., 2012b, 2012c), and some Proto/Early Aurignacian cave sites, as La Viña, Cueva Morín, El Castillo and Labeko Koba, among others (Arrizabalaga, 2000; Maíllo-Fernández, 2002; Maíllo-Fernández et al., 2010; Santamaría Álvarez, 2012; Wood et al., 2014). A number of investigations on the Late Middle Paleolithic and the Early Upper Paleolithic have recently been undertaken in the region, significantly increasing the knowledge of the different techno-complexes and their characteristics. Studies on chronology (e.g. Maroto et al., 2012; Higham et al., 2014; Wood et al., 2014), environmental conditions (e.g. Iriarte et al., 2005; López-García et al., 2011; Rofes et al., 2015; García-Ibaibarriaga et al., 2015), bioanthropology (e.g. Bermúdez de Castro and Sáenz de Buruaga, 1997; Rostro Carmona, 2013; Torres et al., 2011; Rosas et al., 2015), technology (e.g. Carrión Santafé et al., 2008; Rios-Garaizar, 2008) and subsistence practices (e.g. Altuna and Mariezkurrena, 2000; Castaños, P., 2005; Yravedra, 2013; Rios-Garaizar and García Moreno, 2015) have provided crucial data to establish a better framework for the interpretation of the important biological and cultural changes that occurred in this period.

One of the most significant sites for the study of this period is El Cuco rock-shelter. The site is located in the eastern part of the Cantabrian region and it was excavated in 2005 by an archaeological team led by one of us (PR). In 2007 a monograph including studies of different materials, such as lithics, pollen and macrofaunal remains, was published (Muñoz et al., 2007). Two test pits were excavated at the site. One test pit was located at the entrance of a small cave, called “Covacha” (Sector A). Here, a 1 m² test pit was dug revealing a 2.2 m sequence composed of 13 levels that were assigned to the Holocene and to the Gravettian (levels D-M). Another test pit was carried out in the eastern part of the rock-shelter (Sector B). Excavation in this area revealed a 2.5 m deep stratigraphic sequence that comprised 14 archeological levels (I-XIV). Two radiocarbon dates were obtained from the apatite fraction of macromammal charred bones from levels XIII and III, as poor bone collagen preservation prevented dating of this material. The results obtained for the sample dated from level XIII was 30,020 +160 -150 uncal BP (GrA-32436), leading the authors (who were at that time unaware of the fact that bone apatite was used for radiocarbon dating) to attribute the lower part of the sequence (levels VI to XIV) to the Evolved Aurignacian, while the result obtained from level III was 23,400 ± 210 uncal BP (GrA-32097), suggesting a Gravettian cultural attribution for the upper levels (V-III) of the sequence (Muñoz et al., 2007; Maroto et al., 2012).

Recently, in the framework of a project developed by one of the authors (IGZ) to assess the environmental conditions prevailing during the Upper Paleolithic (UP) in northern

Iberia, additional radiocarbon dates were undertaken using limpet shells from level X. The results obtained contradicted the cultural attribution of this level to the Aurignacian and placed the occupation in an earlier period. Also, considering the regional record, the characteristics of the published lithic assemblages were found to be quite anomalous when compared to assemblages from other Early Upper Paleolithic (EUP) levels in the region. This was noted in a recent synthesis about the Gravettian and Evolved Aurignacian in the Cantabrian region (de la Peña, 2011; Ríos-Garaizar et al., 2013).

In order to clarify these anomalies, and given that radiocarbon dates taken from biogenic apatite should be considered cautiously (Taylor, 1987; Zazzo and Saliège, 2011), a reassessment of the chronology of the entire sequence at El Cuco was undertaken. In this paper we present data obtained from the reassessment of Sector B at the site. This review was based on new radiocarbon dates performed on bones and shells, and a re-evaluation of the lithic assemblages. Up to now only results for the oldest levels (VI to XIV), supposedly corresponding to the Evolved Aurignacian, are available. Results will be used to discuss the chronology originally proposed for the site and to provide a new framework for the study of human populations occupying the Cantabrian region during the Late Middle Paleolithic (LMP) and the Early Upper Palaeolithic.

2. El Cuco rock-shelter: description and archaeological evidence

2.1 The site

El Cuco rock-shelter is located in the town of Castro-Urdiales, in the Autonomous Community of Cantabria (Cantabrian region, northern Iberia) (Fig. 1). The rock-shelter presents an arc-shaped plant and measures 34 m long and five meters deep. A test pit covering a surface of 2 m² was excavated in Sector B, situated on the eastern side of the rock-shelter (Fig. 2). Excavation revealed a 2.5 m deep sequence composed of 14 levels (I-XIV). Bedrock was not found at the base of the excavation, suggesting the existence of additional stratigraphy below level XIV. Levels I and II were found to be reworked, and contained mixed materials of different chronologies, some of them modern in appearance. The rest of the sequence was well preserved with clear sedimentological differences that allowed the identification of different stratigraphic units (Muñoz et al., 2007). In this paper we will only refer to the lower part of the stratigraphy, from levels VI to XIV (Fig. 3). The sequence revealed a succession of sedimentary episodes, including roof fall events and stalagmite crust formations. Levels VI and VIII consisted of soft and loose crusts whilst levels IX and XI were formed by hard and compact crusts. All of these levels presented very limited amounts of archaeological material. The other stratigraphic levels, in which artifacts and other archaeological items were found abundantly, were defined as follows: level VII was characterized by brown silty sediment, slightly damp, with some limestone blocks arranged horizontally; level X was composed of very loose brown silt with abundant limestone blocks of small and medium size, and some isolated blocks of calcite crust; level XII consisted of loose and damp yellow silt with limestone inclusions; level XIII was formed by brown silty clay, slightly damp, with some small limestone blocks; and level XIV was dark brown clay (this level was excavated in a very limited extension so it was difficult to properly define its features).

2.2 Faunal assemblages

The macrofaunal assemblage (Castaños and Castaños, 2007) is quite rich but very fragmented, probably due to a mixture of human activity and postdepositional processes, although a full taphonomic study has not been performed so far at the site. Given the poor state of preservation, species identification turned out to be challenging and only 161 remains out of the 6,702 recovered in levels VI to XIV were possible to identify. The presence of carnivores is evident in levels XII and XIII, but their frequency and importance in the taphocenosis are very limited. The most represented species in the entire sequence is the red deer (*Cervus elaphus*), which is also the dominant species in the bone assemblages from all levels, followed by the tribe Bovini (only one specimen was identified as *Bison priscus*). Other species such as horse (*Equus ferus*) (levels VII, XIII), ibex (*Capra pyrenaica*) (X, XI), chamois (*Rupicapra pyrenaica*) (XII, XIII), roe deer (*Capreolus capreolus*) (VII, XII) and woolly rhinoceros (*Coelodonta antiquitatis*) (X, XIII) appear in low numbers. Recently, Proboscidea teeth fragments were found in level XII by one of us (ABMA). Given the state of preservation of the fragments it was not possible to identify the dental elements. However, it was possible to determine that the fragments belonged to the genus *Mammuthus*. Among the species belonging to this genus, *Mammuthus primigenius* has been found in the Paleolithic archaeological record of the Cantabrian region until the Solutrean, c. 20 kys cal BP (Mariezkurrena, 2011 and references therein).

Shell assemblages were recorded throughout the stratigraphic sequence at El Cuco (see Gutiérrez-Zugasti et al., 2013a for a detailed description and discussion), although most of the shells were found in the oldest portion of the sequence (levels X, XI and XII). A good number of marine and terrestrial taxa were identified, although only limpets from the *Patella* genus were found in any significant quantity. The presence of other marine taxa, including *Ocenebra erinaceus*, *Acanthocardia* sp., *Gibbula* sp. and the sea urchin *Paracentrotus lividus* can be considered as marginal. Land snails have also been recorded at the site but only in levels X to XIII. Most of the land snails were found in limited quantities (e.g. *Elona quimperiana*, *Oestophora silvae*, *Pomatias elegans*, *Cochlostoma* sp. and *Oxychilus* sp.) and *Cepaea nemoralis* was the only land snail species to be found in any substantial quantity within level XII. While the *Patella* and probably the sea urchin *P. lividus* were collected by humans as food, the accumulation of land snails was considered a natural taphocenosis, as these species usually live near rock-shelters and caves. Only shells of the land snail *C. nemoralis* could have been used as food, although in this case it is difficult to establish whether they were brought to the site by humans for food or reached the site by themselves. Shells used as ornaments have not been identified within levels VII to XIII. The evidence for the procurement of coastal resources at El Cuco suggests that their exploitation was carried out at a relatively low intensity (Gutiérrez-Zugasti et al., 2013a).

2.3 Environmental conditions

Environmental conditions throughout the sequence were deduced from the presence of pollen (Ruiz Zapata and Gil García, 2007), mollusks (Gutiérrez-Zugasti et al., 2013a), microvertebrates (Muñoz et al., 2007) and macrovertebrate remains (Castaños and Castaños, 2007). Pollen data for these levels is limited but some changes have been identified in the sequence. The oldest levels (XIV-X) show a transition from low temperatures in level XIII, with few arboreal species present, to more temperate

conditions in level X with a notable expansion of woods. Levels IX to VI show a decrease of woodland and some evidence of aridity (Ruiz Zapata and Gil García, 2007). Marine mollusks showed a similar pattern, with presence of temperate species such as *Patella depressa* and *Patella ulyssiponensis* in levels X and XII, indicative of warmer temperatures. Similarly, the land snail assemblage is also typical of temperate and humid conditions, with presence of *Cepaea nemoralis* in levels XII and XIII (André, 1975; Gutiérrez-Zugasti et al., 2013a). The presence of micromammals such as *Talpa europaea* (VII, VIII, XIII, XIV), *Pytimis* sp. (level XII) and *Apodemus* sp. (level XIII) also suggests temperate climatic conditions. The macrofaunal assemblage is dominated by ungulates ecologically adaptable to both warm and cold conditions and from diverse topographical conditions, and no precise environmental information can be deduced from their presence. Only the identification of *Coelodonta antiquitatis* in levels X and XIII might indicate that the site was occupied during a cold period.

3. Materials and methods

3.1 Radiocarbon dates

Four bones (two from level X, one for level XIII and one for level XIV) with no evidence of heating and four limpet shells belonging to the species *Patella vulgata* (two from level X, one from level XII and one from level XIII) were selected for AMS radiocarbon dating. All samples were taken from the Museum of Prehistory and Archaeology of Cantabria (MUPAC, Santander). Three bones and three shells were dated at the Oxford Radiocarbon Accelerator Unit (ORAU) following routine pretreatments and standard dating procedures that included ultrafiltration and measurement of stable isotopic composition and carbon and nitrogen content (and C:N ratio) for bones (see Brock et al. 2010b and references therein for a description of procedures). A diaphysis from an ungulate bone was dated at the Center for Applied Isotopes Studies (CAIS) of the University of Georgia (USA) following procedures described in Cherkinsky et al. (2010) and Vogel et al. (1984). Additionally, one shell was dated at Beta Analytic (see procedures at the website of the company, www.radiocarbon.com).

3.2 Bone collagen preservation

In order to establish the bone collagen preservation, the amount of carbon and nitrogen contained in 40 additional non-charred bones collected from the MUPAC was determined using two different techniques. Firstly, carbon and nitrogen isotope ratios ($\delta^{13}\text{C}$ and $\delta^{15}\text{N}$) were analyzed in 26 bones of the red deer (*Cervus elaphus*) from levels VII to XIII within the EUROREFUGIA project aiming to reconstruct palaeoenvironmental and paleoclimatic conditions during the LMP and EUP at the site. Red deer were one of the most commonly consumed prey during the Paleolithic in the Cantabrian region (Altuna, 1972; Altuna and Mariezkurrena 2000; Altuna et al., 2011), making it a suitable species for isotopic analysis. Specimens from deposits directly associated with human activity (e.g. with cut marks, anthropogenic breakage) found in association with stone tools were targeted. The selected samples were prepared and analyzed at the Department of Human Evolution, Max Planck Institute for Evolutionary Anthropology, Leipzig, Germany. Collagen extraction was undertaken following procedures outlined in Richards and Hedges (1999) with the addition of an ultra-

filtration step (Brown et al., 1988). Samples ranging between 0.7-0.9 g were drilled and cleaned using aluminium oxide air abrasion. Samples were demineralized in 0.5M HCL at 6-8 °C for between 3-10 days, and then washed three times using de-ionized water before being gelatinized in a weak acidic solution (pH3 HCL) at 70 °C for 48 hours. Samples were filtered using 5–8 µm Ezee® mesh filters (Elkay Laboratory Products), before being ultra-filtered to separate out the larger >30 ka collagen chains. The >30 ka fraction was then frozen and lyophilized for 48 hours. Between 0.2 and 0.45 mg of collagen was weighed into tin capsules for analysis of stable carbon ($\delta^{13}\text{C}$) and nitrogen ($\delta^{15}\text{N}$) isotope ratios. Specimens were analyzed in duplicate, using a Delta XP mass spectrometer coupled to a Flash EA 2112 elemental analyzer. The $\delta^{13}\text{C}$ values and $\delta^{15}\text{N}$ values are reported relative to the V-PDB standard and AIR standards. A series of international and internal standards were used to calculate analytical error which was $\pm 0.1\%$ (1σ) or better. The mean difference observed between duplicate measurements was 0.03 for $\delta^{13}\text{C}$, and 0.01 for $\delta^{15}\text{N}$.

Secondly, the % carbon and % nitrogen within each bone was obtained from 14 specimens from levels X to XIV using elemental analysis performed at the research facilities (UAQiE) of the University of Girona. Samples were run in an elemental analyzer Perkin Elmer EA2400 series II. Samples of bone powder ranging between 1 and 5 mg were placed in an autosampler and then combusted at 925-930 °C in the presence of highly pure O₂. Combustion gases were measured using a thermal conductivity meter. Quantification was made after calibration using Acetanilide as standard. Detection limits for carbon, hydrogen and nitrogen were 0.72%, 0.20% and 1.20% respectively.

3.3 Lithic analysis

Lithic assemblages archived at the MUPAC were studied by one of the authors (JRG) in order to validate or refute the previously published results (Muñoz et al., 2007). Materials from level VII were assessed in more detail, whilst lithics from levels VIII to XIV were preliminarily evaluated. The objective of this analysis was not to offer a complete description of these lithic assemblages, which is beyond the scope of this research, but to offer enough arguments to validate or refute the attribution of these assemblages to the Middle Paleolithic or the Initial Upper Paleolithic. The raw material was classified according to the major raw material categories, namely flint, mudstone, quartz and quartzite. Flint varieties were classified following the flint-types defined by Tarriño (2006) and Risetto (2008). The technological interpretation of each assemblage was performed according to the presence/absence of typical cores, blanks and formal tools present in Middle to Upper Paleolithic regional techno-complexes (Arrizabalaga, 2000; Arrizabalaga et al. 2014; Rios-Garaizar, 2008, 2012; Rios-Garaizar et al., 2013a).

4. Results

4.1 Radiocarbon dates

Bone samples did not produce radiocarbon dates due to poor collagen preservation, except the sample UGAMS-9076, which produced a date of 14.5 ka uncal BP for level X (Table 1). However, this date should not be trusted for two reasons: a) the radiocarbon laboratory reported a very low amount of collagen in that sample

(Cherkinsky, email communication), and b) lithic and faunal assemblages found in level X are incompatible with a Lower-Middle Magdalenian cultural attribution.

The total collagen yield is an important indicator of the preservation state of the bone and its suitability for dating. If the amount of collagen extracted from the original sample is <1% of the starting weight of bone material used, the sample is usually rejected prior to dating. The percent carbon content of the sample should be within 30–50% of the weight of the collagen; values higher or lower than this can be indicative of contamination or degradation. In addition, the C:N atomic weight ratio should be in the range of 2.9–3.5 (van Klinken, 1999). Samples with higher ratios may have been contaminated with exogenous carbon; those with lower ratios may be badly degraded. In both cases, the samples should be rejected (Brock et al., 2010b). The negative results obtained from El Cuco bone samples led us to follow a new dating strategy, and so data generated by the project EUROREFUGIA was used, among other aims, to assess the general state of collagen preservation in bones from El Cuco. In total 19 out of 26 analyzed bones produced collagen (Table 2). Although C:N ratios were between 2.9 and 3.6 in four samples, only one specimen yielded %C values greater than 35% and %N values over 10%, which are indicative of good collagen preservation. However, none of the samples produced collagen yields higher than 0.4% and therefore dating was not attempted. A similar approach was followed by the project HAR2010-22013, in which elemental analysis (C and N) was conducted on 14 bone samples from levels X to XIV. The %N content of whole bone has been documented to be a successful technique to identify bones with good collagen preservation (Brock et al., 2010a). Results showed very low amounts of nitrogen, and only in one sample from level XII (spit 22) nitrogen exceeded 0.5% of the bone weight (Table 3). However, given the presumable limited amount of collagen preserved in that sample, no radiocarbon dating was attempted. Two bone samples that failed to be dated (CUCO 5 and CUCO 6) were selected for elemental analysis. Results confirmed the absence of collagen in those samples (Table 3).

All shell carbonate samples were successfully dated (Table 1). Samples from level X produced two dates of 42.3 and 46.2 ka uncal BP, whilst sample from level XII was dated to >43.5 ka uncal BP and the sample from level XIII was dated to 46.4 ka uncal BP. Given the uncertainties of the radiocarbon method on chronologies close to the limit of the method (~50 ka uncal BP), the high standard deviations associated with the dates and the lack of information on the ΔR of the ocean reservoir effect for that period in the region, the available dates were not calibrated.

4.2 Lithic assemblages

The re-evaluation of the lithic assemblages found at El Cuco sequence offers a clearly different overview from what was originally published (Muñoz et al., 2007). Although the work is still in progress due to the overwhelming amount of lithic artifacts recovered at the site (lithic assemblages from levels VII to XIII sum more than 20.000 remains), some qualitative impressions can be drawn for a key level at the site, such as level VII (Fig 4).

Level VII, with 11,382 lithic artifacts, is one of the richest of the entire sequence. The most used raw-material is flint (>95%, Muñoz et al., 2007), with the Upper Cretaceous Flysch varieties the most common. The closest sources of these raw materials nowadays

are found at Kurtzia, located 20 km east from the site, where several Middle Paleolithic workshops with Levallois technology have been identified (Muñoz, 2004; Rios-Garaizar et al., 2010, 2013b; Rios-Garaizar, 2014). Other local and non-local flint varieties appear in smaller proportions. There are local flints that appear in the Lower Cretaceous limestones. The most represented non-local variety is a translucent flint with irregular color zones, abraded neo-cortical surfaces, diomorphic dolomite rhombs and chalcedony geodes. The closest described outcrop for this silex variety is found in the Eocene external marine platform from Virgen del Mar, near Santander (Tarrío et al., 2015), 50 km to the West. Longer-distance transportation can be inferred from the presence of some clear Treviño variety flints and some Paleocene flints, whose main sources are located more than 80 km away. Other raw materials such as quartzite, sandstone, limestone or mudstone have been also used in relatively minor quantities.

Lithic technology in level VII is characterized by the presence of a ramified Levallois strategy (Rios-Garaizar et al., 2015). The overall small size of lithic artifacts, the abundance of recurrent- centripetal Levallois cores on flakes, kombewa flakes and typical micro-Levallois flakes distinguish the lithic production in this level. Also, a limited number of larger flakes, many of them cortical, and usually retouched as Quina or half-quina side-scrapers, are characteristic from this level. The blade technology described in the original publication was presumably inferred from several typometrically blade-like fragments, but no core and no indisputable blade product has been identified in this review. The exploitation of rocks other than flint follows different strategies, aiming at the production of large flakes. The retouched toolkit is dominated by side-scrapers and denticulates, while mousterian points are very rare. Most of the UP types described in the monograph were misinterpreted, for example the so called end-scrapers on platform are in fact Levallois flakes with faceted platforms; the end-scrapers are atypical or convergent side-scrapers; the pieces interpreted as burins have not clear intentional burin-removals; the borers are atypical (*Bec*), and are not uncommon in Middle Paleolithic assemblages; the piece described as an Aurignacian blade is a distal fragment of mousterian point; and all the truncated pieces are flakes with distal retouch.

Also in level VII, initially three fragments of antler were identified and interpreted as a distal fragment of point, a fragment of a rod and a distal part of a chisel (Muñoz et al. 2007). A closer reexamination of these pieces has not revealed any trace of manipulation, and therefore their interpretation as bone tools should be rejected.

A quick evaluation of levels VIII-XIV revealed similar characteristics to level VII, with a flint based toolkit, with Levallois technology, side-scrapers and denticulates and almost no UP-like tools and artifacts.

5. Discussion and conclusions

Despite our continuous attempts to obtain radiocarbon dates from bone collagen, taphonomic alterations (probably during both the biostratigraphic and fossil-diagenetic phases) induced poor collagen preservation and were responsible for negative results on ungulate bone samples. Results of carbon and nitrogen isotope ratios and elemental analysis confirmed the low bone collagen preservation throughout the lower stratigraphic sequence at El Cuco. Only radiocarbon dating performed on shell carbonates produced positive results, providing dates ranging from 42.3 to 46.4 ka BP.

Shell samples used for radiocarbon dating are affected by the marine radiocarbon reservoir effect, which produce an offset in ^{14}C age between contemporaneous organisms from the terrestrial environment and organisms that derive their carbon from the marine environment (Ascough et al., 2005; Soares and Martins, 2009). The average difference between a radiocarbon date of a terrestrial sample such as a bone, and a marine shell is about 400 radiocarbon years (Stuiver and Braziunas, 1993). This means that the true age of the shell carbonate might be actually younger than the measured radiocarbon age. However, in the case of El Cuco, even taking into account a similar correction, most of the dates are still clearly older than 41 ka BP. In addition, samples dated close to the limit of the radiocarbon method (~50 ka BP) should be treated cautiously as finite ages that can be taken at face value. In the case of El Cuco, the >43.5 and the two 46 ka BP results should almost be considered as lying beyond the radiocarbon limit and therefore, not finite dates, opening the door to the possibility of an older chronology, at least for levels X to XIV.

Some scholars have suggested that biogenic apatite from cremated bones can be reliably dated (Lanting et al., 2001). Under this assumption, and following the method proposed by those authors, bioapatite from a charred bone from level XIII at El Cuco was used for radiocarbon dating. Results produced a date of 30 ka uncal BP that led the excavators to place most of the stratigraphic sequence in the Aurignacian (Muñoz et al., 2007). However, recent studies have demonstrated that biogenic carbonate can be contaminated by secondary carbonate derived from the CO_2 of the local atmosphere during combustion (Hüls et al., 2010; van Strydonck et al., 2010). Zazzo and Saliège (2011) have also stressed the complications of radiocarbon dating on bone apatite. They analyzed unburned bones and found large intra-individual differences in ^{14}C age in Late Pleistocene and Holocene sites from Europe and America (in contrast with arid environments where no significant differences were found), showing that both bone and enamel apatite can suffer from rejuvenation due to isotopic exchange during fossilization. The four radiocarbon dates obtained from shell carbonate at El Cuco show significantly older dates than that previously obtained for level XIII (~30 ka uncal BP) on biogenic apatite from charred bones, suggesting that, although isotopic exchange during fossilization cannot be discarded, the bone apatite used for radiocarbon dating was most likely rejuvenated due to contamination with secondary carbonate during combustion.

Results from shell carbonates at El Cuco are used to propose a new chronocultural attribution at least for levels X to XIV. The regional Middle to Upper Paleolithic chronological framework has been significantly improved in recent years. New dates obtained from LMP assemblages show that these techno-complexes did not last beyond the 40 ka uncal BP frontier (Maroto et al., 2012; Higham et al., 2014). Recent dates obtained from Châtelperronian levels at Labeko Koba also suggest that this techno-complex can be dated around 40 ka uncal BP (Higham et al., 2014). The first Aurignacian evidence in the region is significantly younger, and it has been dated around 38–35 ka uncal BP at sites such as for example Labeko Koba, La Viña, Morín and Isturitz (Fortea-Pérez, 1996; Maillo-Fernández et al., 2001; Szmids et al., 2010; Wood et al., 2014). Considering this chronological framework and the dates obtained for levels X, XII and XIII at El Cuco we can confidently propose that human presence at that time was contemporaneous with the regional LMP. This strongly suggests that archaeological assemblages originally attributed to the Evolved Aurignacian techno-complex (levels VI to XIII) should be indeed attributed to the LMP.

This hypothesis is fully supported by the reassessment of the lithic assemblages. Level VII, located on top of the stratigraphic sequence evaluated here, can be confidently attributed to the Mousterian techno-complex. The intensive use of flint, although quite uncommon in the Central Cantabrian MP (Sarabia, 1995) is quite common in the Eastern Cantabrian MP, but probably to a lesser extent than at El Cuco (Rios-Garaizar, 2016). This intensive use of flint can be explained by the proximity of Urgonian and Flysch flint sources. Also, the presence of distant (<50 km) or very distant (>50 km) flint, noted in El Cuco, has been previously described in Axlor and Amalda assemblages (Rios-Garaizar, 2012; Rios-Garaizar, 2010). No blade or bladelet productions have been identified in this level, although this is a well known feature of Cantabrian Middle Paleolithic (see Maillou-Fernández, 2001, Maillou-Fernández et al. 2004, Sánchez-Fernández & Maillou-Fernández, 2007, Tafelmaier & Pastoors 2013). Also, as we have mentioned, most of the retouched tools previously described as typical Upper Paleolithic, either have been misinterpreted, as the so-called “end-scrapers on platform”, or are atypical, as the endscrapers, borers or burins. There is no tool that could be considered typical for the Aurignacian. The technological strategy identified in this level has a clear Levallois component, more precisely a ramified Levallois production. The abundance of Levallois cores on flakes, and the presence of small or even micro Levallois flakes, relates this assemblage to the well known collections from level VIII at Amalda and levels VIII-N at Axlor (Rios-Garaizar et al., 2015). Nevertheless, there are some differences between El Cuco and these levels. The main difference with the lithic assemblages from Amalda is the absence of heavy tools as cleavers or handaxes, and the differences with Axlor are characterized by the high use of flint and the practical absence of Mousterian points. Despite these differences, which could be explained in terms of behavioral variability of late Neanderthal groups, the main technological features of this assemblage clearly link it with the regional Late Middle Paleolithic (LMP) (Rios-Garaizar, 2016).

The new MP chronology proposed for levels VII to XIV at El Cuco rock-shelter has significant implications for the interpretation of Neanderthal subsistence strategies and settlement patterns, especially for coastal settlement and use of marine resources, not only in northern Iberia, but also in Atlantic Europe. Firstly, the attribution of those levels to the MP expands the geographical framework of evidence for exploitation of coastal resources by Neanderthals. Exploitation of marine resources has been recorded in Iberia at sites such as for example Los Aviones, Pernerias, Humo Complex and Bajondillo (Cortés-Sánchez et al., 2008, 2011; Montes, 1988; Zilhão et al., 2010) located in Mediterranean Iberia, Gorham’s cave and Vanguard cave in Gibraltar (Fa, 2008), and Figueira Brava and Ibn Ahmar on the Atlantic coast of Portugal (Bicho et al., 2004, 2008; Callapez, 2000; Zilhão, 2012). But the appearance of coastal resources in MP sites to the north of Lisbon (Portugal) was very limited up to now and just a few sites containing a few shells had been recorded (e.g. Morín, El Pendo and Amalda caves, located in northern Iberia). Evidence of systematic shell collection has been found in levels X to XIII at El Cuco (see Gutiérrez-Zugasti et al., 2013a for a detailed study of the shells assemblages). The increasing abundance of sites with evidence of coastal resource exploitation shows not only that these resources were not exclusively utilized by anatomically modern humans but also that they were extensively exploited by Neanderthals. From a more general point of view, the available evidence shows that in addition to terrestrial mammals, other resources such as small game, birds, molluscs, fish and marine mammals were present in the diet of MP and EUP humans in Iberia

(Bicho et al., 2004, 2008; Brown et al., 2011; Cortés et al., 2011; Fa, 2008; Gutiérrez-Zugasti et al. 2013b; Manne and Bicho, 2011; Stringer et al., 2008; Villaverde et al., 1996, 1998), which suggests the presence of dietary diversity in both periods and therefore, to some extent, the use of similar subsistence strategies (Gutiérrez-Zugasti et al., 2013a). Information from shell assemblages at El Cuco should be added to the list of sites supporting this interpretation.

Our re-evaluation of the chronology at El Cuco rock-shelter demonstrates that the site contains one of the most interesting and richest MP sequences in northern Iberia. The reinterpretation of the site in the light of the new chronology will provide in the near future very useful information in terms of settlement patterns, technology and subsistence strategies of Neanderthals in the region. However, the new chronological interpretation also demands a reassessment of the rest of the sequence, especially for levels III to Vb originally attributed to the Gravettian. The available radiocarbon date for level III was also obtained from biogenic apatite and therefore it might present the same problems as level XIII reviewed in this paper. Consequently, further research is needed to establish a precise chronology for the rest of the sequence at El Cuco rock-shelter.

Acknowledgments

Radiocarbon dates OxA-27196 and OxA-27730 were funded by the NERC Radiocarbon Facility (NF/2012/1/18) and they were part of the project NF100413 (Newton International Fellowship to IGZ). Radiocarbon dates OxA-30851, P-32155 (ORAU) and UGAMS-9076 were part of the project HAR2013-46802-P funded by the Spanish Ministry of Economy and Competitiveness. Two other samples that failed to be dated at the ORAU (P-35524 and P-35523) as well as the date Beta – 382682 and elemental analysis were obtained in the project HAR2010-22013, funded by the Spanish Ministry of Science and Innovation. Isotopic analysis was performed as part of the projects HAR2012-33956 funded by the Spanish Ministry of Economy and Competitiveness and EUROREFUGIA (Ref. 322112) funded by the European Union through FP7-PEOPLE-2012-CIG (<https://eurorefugia.wordpress.com/>), with additional support from the Max Planck Society. IGZ and ABMA were funded by the Juan de la Cierva (JCI-2012-12094) and the Ramón y Cajal (RYC-2011-00695) Research Programmes of the Spanish Ministry of Economy and Competitiveness, respectively. We would like to thank the staff at the Museo de Prehistoria y Arqueología de Cantabria (MUPAC) for facilitating the access to lithic, shell and bone collections, and for providing the facilities to develop the isotopic sampling and radiocarbon dating. Fieldwork at the site was authorized by the Consejería de Cultura, Turismo y Deporte del Gobierno de Cantabria and funded by the City Council of Castro-Urdiales (Cantabria). We also would like to thank Emilio Muñoz, Silvia Santamaría and José Manuel Morlote for their help with fieldwork and the first archaeological study, Pedro M. Castaños and Jone Castaños for the analysis of the large mammals, M. Blanca Ruiz Zapata and María José Gil García for the analysis of the pollen, H. Reade for bone sampling preparation for isotopes, A. Reiner and S. Steinbrenner for their technical support with the isotope analysis, Lluïsa Matas for their help with elemental analysis, and Tom Higham and Johannes Van der Plicht for kindly replying to all our questions about the samples analyzed in their respective laboratories.

References

- Altuna, J., Mariezkurrena, K., 2000. Macromamíferos del yacimiento de Labeko Koba (Arrasate, País Vasco). *Munibe* 52, 107-181.
- André, J., 1975. Ecologie du Gastéropode terrestre *Cepaea nemoralis* Linné en Languedoc et en Roussillon. *Vie et Milieu* 25, 17-47.
- Arrizabalaga, A., 2000. Los tecnocomplejos líticos del yacimiento arqueológico de Labeko Koba (Arrasate, País Vasco). In: Arrizabalaga, A., Altuna, J. (Eds.), *Labeko Koba (País Vasco). Hienas y humanos en los albores del Paleolítico Superior*. Sociedad de Ciencias Aranzadi, San Sebastián, pp. 193–343.
- Arrizabalaga, A., Rios-Garaizar, J., Maíllo-Fernández, J.-M., Iriarte-Chiapusso, M.-J., 2014. Identifying the Signs: The Middle to Upper Palaeolithic Transition in Southwest Europe from the Perspective of the Lithic Record. *Journal of Lithic Studies* 1. doi:10.2218/jls.v1i2.1064
- Ascough, P., Cook, G.T., Dugmore, A., 2005. Methodological approaches to determining the marine radiocarbon reservoir effect. *Progress in Physical Geography* 29, 532-547.
- Baena, J., Carrión, E., Cuartero, F., Fluck, H., 2012. A chronicle of crisis: The Late Mousterian in north Iberia (Cueva del Esquilleu, Cantabria, Spain). *Quaternary International* 247, 199–211.
- Bermúdez de Castro, J.M., Sáenz de Buruaga, A., 1997. Étude Préliminaire du site Pléistocène Supérieur à hominidé d'Arrillor (Pays Basque, Espagne). *L'Anthropologie* 103, 633–639.
- Bicho, N.F., 2004. The Middle Paleolithic Occupation of Southern Portugal. In: Conard, N.J. (Ed.), *Settlement Dynamics of the Middle Paleolithic and Middle Stone Age*. Kerns Verlag, Tübingen, pp. 513-531.
- Bicho, N., Haws, J., 2008. At the land's end: Marine resources and the importance of fluctuations in the coastline in the prehistoric hunter-gatherer economy of Portugal. *Quaternary Science Reviews* 27, 2166-2175.
- Brock, F., Higham, T., Ramsey, C.B., 2010a. Pre-screening techniques for identification of samples suitable for radiocarbon dating of poorly preserved bones. *Journal of Archaeological Science* 37, 855-865.
- Brock, F., Higham, T., Ditchfield, P., Bronk Ramsey, C., 2010b. Current pretreatment methods for AMS radiocarbon dating at the Oxford Radiocarbon Accelerator Unit (ORAU). *Radiocarbon* 52, 103-112.
- Brown, T.A., Nelson, D.E., Vogel, J.S., Southon, J.R., 1988. Improved collagen extraction by modified Longin method. *Radiocarbon* 30, 171-177.

Brown, K., Fa, D.A., Finlayson, G., Finlayson, C., 2011. Small Game and Marine Resource Exploitation by Neanderthals: The Evidence from Gibraltar. In: Bicho, N.F., Haws, J., Davis, L.G. (Eds.), *Trekking the Shore: Changing Coastlines and the Antiquity of Coastal Settlement*. Springer, New York, pp. 247-272.

Callapez, P., 2000. Upper Pleistocene marine invertebrates from Gruta da Figueira Brava (Arrábida, Portugal). In: Antunes, M.T. (Ed.), *Last Neanderthals in Portugal. Odontologic and other evidence*. Memórias da Academia de Ciências de Lisboa, Classe de Ciências, 38, Lisboa, pp. 83-103.

Carrión Santafé, E., Baena Preysler, J., Conde Ruiz, C., Cuartero Monteagudo, F., Roca, M., 2008. Variabilidad tecnológica en el musteriense de Cantabria. *Treballs d'Arqueologia* 14, 279–318.

Castaños, P., 2005. Revisión actualizada de las faunas de macromamíferos del Würm antiguo en la Región Cantábrica. In: Montes Barquín, R., Lasheras Corruçhaga, J.A. (Eds.), *Actas de la Reunión Científica: Neandertales cantábricos, estado de la cuestión*. Monografías del Museo Nacional y Centro de Investigación de Altamira 20, Ministerio de Cultura, Madrid, pp. 201-207.

Castaños, P., Castaños, J., 2007. Estudio de la fauna del Abrigo de "El Cuco". In: Muñoz, E., Montes, R. (Eds.), *Intervenciones arqueológicas en Castro Urdiales. Tomo III. Arqueología y Arte Rupestre Paleolítico en las cavidades de El Cuco o Sobera y La Lastrilla*. Excmo. Ayuntamiento de Castro Urdiales, Concejalía de Medioambiente y Patrimonio Arqueológico, Castro Urdiales, pp. 161-170.

Cherkinsky, A., Culp, R.A., Dvoracek, D.K., Noakes, J.E., 2010. Status of the AMS facility at the University of Georgia. *Nuclear Instruments and Methods in Physics Research Section B: Beam Interactions with Materials and Atoms* 268, 867-870.

Cortés-Sánchez, M., Morales-Muñiz, A., Simón-Vallejo, M.D., Bergadá-Zapata, M.M., Delgado-Huertas, A., López-García, P., López-Sáez, J.A., Lozano-Francisco, M.C., Riquelme-Cantal, J.A., Roselló-Izquierdo, E., Sánchez-Marco, A., Vera-Peláez, J.L., 2008. Palaeoenvironmental and cultural dynamics of the coast of Málaga (Andalusia, Spain) during the Upper Pleistocene and early Holocene. *Quaternary Science Reviews* 27, 2176-2193.

Cortés-Sánchez, M., Morales-Muñiz, A., Simón-Vallejo, M.D., Lozano-Francisco, M.C., Vera-Peláez, J.L., Finlayson, C., Rodríguez-Vidal, J., Delgado-Huertas, A., Jiménez-Espejo, F.J., Martínez-Ruiz, F., Martínez-Aguirre, M.A., Pascual-Granged, A.J., Bergadá -Zapata, M.M., Gibaja-Bao, J.F., Riquelme-Cantal, J.A., López-Sáez, J.A., Rodrigo-Gámiz, M., Sakai, S., Sugisaki, S., Finlayson, G., Fa, D.A., Bicho, N.F., 2011. Earliest Known Use of Marine Resources by Neanderthals. *PLoS ONE* 6, e24026.

De la Peña, P., 2011. Sobre la unidad tecnológica del Gravetiense en la Península Ibérica: implicaciones para el conocimiento del Paleolítico Superior Inicial. PhD Thesis, Universidad Complutense de Madrid, Madrid.

Fa, D.A., 2008. Effects of tidal amplitude on intertidal resource availability and dispersal pressure in prehistoric human coastal populations: the Mediterranean-Atlantic transition. *Quaternary Science Reviews* 27, 2194-2209.

Fortea Pérez, F.J., 1996. Le Paléolithique supérieur en Espagne: Galice et Asturias (1991e1995). In: UISSP, Congrès de Forlì, Commission Paléolithique Supérieur, Bilan 1991-1995. ERAUL, Liège, pp. 329-344.

García-Ibaibarriaga, N., Rofes, J., Bailón, S., Gárate, D., Rios-Garaizar, J., Martínez-García, B., Murelaga, X., 2015. A palaeoenvironmental estimate in Askondo (Bizkaia, Spain) using small vertebrates. *Quaternary International* 364, 244–254.

Gutiérrez-Zugasti, I., Cuenca-Solana, D., Rasines del Río, P., Muñoz-Fernández, E., Santamaría-Santamaría, S., Morlote-Expósito, J.M., 2013a. The role of shellfish in hunter-gatherer societies during the early Upper Palaeolithic: a view from El Cuco rockshelter, Northern Spain. *Journal of Anthropological Archaeology* 32, 242-256.

Gutiérrez-Zugasti, I., Cuenca-Solana, D., González-Morales, M.R., García-Moreno, A., 2013b. Exploitation of molluscs as food during the Gravettian at Fuente del Salín cave (Cantabria, Northern Spain). In: Daire, M.Y., Dupont, C., Baudry, A., Billard, C., Large, J.M., Lespez, L., Normand, E., Scarre, C. (Eds.), *Anciens peuplements littoraux et relations Homme/Milieu sur les côtes de l'Europe Atlantique / Ancient Maritime Communities and the Relationship between People and Environment along the European Atlantic Coasts*. BAR International Series 2570, Archaeopress, Oxford, pp. 491-500.

Higham, T., Douka, K., Wood, R., Ramsey, C.B., Brock, F., Basell, L., Camps, M., Arrizabalaga, A., Baena, J., Barroso-Ruiz, C., Bergman, C., Boitard, C., Boscato, P., Caparrós, M., Conard, N.J., Draily, C., Froment, A., Galván, B., Gambassini, P., García-Moreno, A., Grimaldi, S., Haesaerts, P., Holt, B., Iriarte-Chiapusso, M.-J., Jelinek, A., Jordá Pardo, J.F., Maíllo-Fernandez, J.-M., Marom, A., Maroto, J., Menéndez, M., Metz, L., Morin, E., Moroni, A., Negrino, F., Panagopoulou, E., Peresani, M., Pirson, S., de la Rasilla, M., Riel-Salvatore, J., Ronchitelli, A., Santamaría, D., Semal, P., Slimak, L., Soler, J., Soler, N., Villaluenga, A., Pinhasi, R., Jacobi, R., 2014. The timing and spatiotemporal patterning of Neanderthal disappearance. *Nature* 512, 306-309.

Hoyos Gómez, M., Sáenz de Buruaga, A., Ormazabal, A., 1999. Cronoestratigrafía y paleoclimatología de los depósitos prehistóricos de la cueva de Arrillor (Araba, País Vasco). *Munibe* 51, 137–151.

Hüls, C.M., Erlenkeuser, H., Nadeau, M.J., Grootes, P.M., Andersen, N., 2010. Experimental study on the origin of cremated bone apatite carbon. *Radiocarbon* 52, 587-599.

Iriarte, M.J., Gómez Orellana, L., Muñoz Sobrino, C., Ramil-Rego, P., Arrizabalaga, A., 2005. La dinámica de la vegetación en el NW peninsular durante la transición del Paleolítico Medio al Paleolítico Superior. In: Montes Barquín, R., Lasheras Corruchaga, J.A. (Eds.), *Actas de la Reunión Científica: Neandertales cantábricos, estado de la*

cuestión. Monografías del Museo Nacional y Centro de Investigación de Altamira 20, Ministerio de Cultura, Madrid, pp. 231–253.

Lanting, J.N., Aerts-Bijma, A.T., Van Der Plicht, J., 2001. Dating of cremated bones. *Radiocarbon* 43, 249-254.

Laville, H., Hoyos, M., 1994. Algunas precisiones sobre la estratigrafía y sedimentología de Cueva Morín. In: Bernaldo de Quirós, F. (Ed.), *El Cuadro Geocronológico del Paleolítico Superior Inicial*. Instituto de Conservación y Restauración de Bienes Culturales, Madrid, pp. 201–209.

López-García, J.M., Cuenca-Bescós, G., Blain, H.-A., Álvarez-Lao, D., Uzquiano, P., Adán, G., Arbizu, M., Arsuaga, J.L., 2011. Palaeoenvironment and palaeoclimate of the Mousterian–Aurignacian transition in northern Iberia: The small-vertebrate assemblage from Cueva del Conde (Santo Adriano, Asturias). *Journal of Human Evolution* 61, 108–116.

Maíllo-Fernández, J.M., Valladas, H., Bernaldo de Quirós, F., Cabrera Valdés, V., 2001. Nuevas dataciones para el Paleolítico Superior de Cueva Morín (Villanueva de Villaescusa, Cantabria). *Espacio, Tiempo y Forma, Prehistoria y Arqueología* 14, 145-150.

Maíllo Fernández, J.M., 2001. El fenómeno laminar del Paleolítico Medio: el ejemplo de Cueva Morín. *Espacio, Tiempo y Forma. Serie I, Prehistoria y Arqueología* 14, 79–105.

Maíllo-Fernández, J.M., 2002. Tecnología lítica en el Auriñaciense arcaico de Cueva Morín (Villanueva de Villaescusa, Cantabria). *Espacio Tiempo y Forma. Serie I, Prehistoria y Arqueología* 15, 87–116.

Maíllo, J.M., Cabrera, V., Bernaldo de Quirós, F., 2004. Le débitage lamellaire dans le Moustérien final de Cantabrie (Espagne) : le cas de El Castillo et Cueva Morin. *L'anthropologie* 108, 367–393.

Maíllo-Fernández, J.M., 2005. La producción laminar en el Chatelperroniense de Cueva Morín: modalidades, intenciones y objetivos. *Trabajos de Prehistoria* 62, 47–64.

Maíllo Fernández, J.M., 2007. Aproximación tecnológica del final del Musteriense de Cueva Morín (Villanueva de Villaescusa, Cantabria, España). *Munibe (Antropología-Arkeologia)* 58, 13–42.

Maíllo-Fernández, J.M., Bernaldo de Quirós, F., 2010. L'Aurignacien archaïque de la grotte El Castillo (Espagne) : caractérisation technologique et typologique. *L'Anthropologie* 114, 1–25.

Manne, T., Bicho, N.F., 2011. Prying New Meaning from Limpet Harvesting at Vale Boi during the Upper Paleolithic. In: Bicho, N.F., Haws, J., Davis, L.G. (Eds.), *Trekking the Shore: Changing Coastlines and the Antiquity of Coastal Settlement*. Springer, New York, pp. 273-289.

Mariezkurrena, K. 2011. Hallazgos de macromamíferos poco frecuentes en yacimientos arqueológicos y paleontológicos del Pleistoceno de la región cantábrica. *Kobie (Paleoantropología)* 30, 83-110.

Maroto, J., Vaquero, M., Arrizabalaga, Á., Baena, J., Baquedano, E., Jordá, J., Julià, R., Montes, R., Van der Plicht, J., Rasines, P., Wood, R., 2012. Current issues in late Middle Palaeolithic chronology: New assessments from Northern Iberia. *Quaternary International* 247, 15-25.

Montes, R., 1988. Restos malacológicos y paleontológicos del Musteriense en la costa de Murcia (Sureste de España). *Anales de Prehistoria y Arqueología* 4, 27-35.

Muñoz Fernández, E., Rasines del Río, P., Santamaría Santamaría, S., Morlote Expósito, J.M., 2007. Estudio arqueológico del abrigo del Cuco. In: Muñoz Fernández, E., Montes Barquín, R. (Eds.), *Intervenciones arqueológicas en Castro Urdiales*, tomo III. Arqueología y arte rupestre paleolítico en las cavidades de El Cuco o Sobera y La Lastrilla. Excmo. Ayuntamiento de Castro Urdiales. Concejalía de Medio Ambiente y Patrimonio Arqueológico, Castro Urdiales, pp. 15-160.

Muñoz Salvatierra, M., 2004. Estado actual del conocimiento sobre las culturas del paleolítico medio en el País Vasco peninsular. *Kobie (Anejos)* 6(1), 125–132.

Pinto-Llona, A., Clark, G.A., Karkanas, P., Blackwell, B., Skinner, A., Andrews, P., Reed, K., Miller, A., Macías-Rosado, R., Vakiparta, J., 2012. The Sopeña rockshelter, a new site in Asturias (Spain) bearing evidence on the Middle and Early Upper Palaeolithic in Northern Iberia. *Munibe (Antropología-Arkeologia)* 63, 45–79.

Richards, M.P., Hedges, R.E.M. 1999. Stable isotope evidence for similarities in the types of marine foods used by Late Mesolithic humans at sites along the Atlantic coast of Europe. *Journal of Archaeological Science* 26, 717-722.

Rios-Garaizar, J., 2008. Variabilidad tecnológica en el Paleolítico Medio de los Pirineos Occidentales: una expresión de las dinámicas históricas de las sociedades neandertales. *Treballs d'Arqueologia* 14, 172–195.

Rios-Garaizar, J., 2010. Organización económica de las sociedades neandertales: el caso del nivel VII de Amalda (Zestoa, Gipuzkoa). *Zephyrus* LXV, 15–37.

Rios-Garaizar, J., 2012. Industria lítica y sociedad en la Transición del Paleolítico Medio al Superior en torno al Golfo de Bizkaia. *PUBliCan*, Ediciones de la Universidad de Cantabria, Santander.

Rios-Garaizar, J., 2014. Aranbaltza. Yacimiento Paleolítico al aire libre. *Arkeoikuska: Investigación Arqueológica* 2013, 175–178.

Rios-Garaizar, J., 2016. A new chronological and technological synthesis for Late Middle Paleolithic of the Eastern Cantabrian Region. *Quaternary International*. <http://dx.doi.org/10.1016/j.quaint.2016.02.020>

Rios-Garaizar, J., Arrizabalaga, A., Villaluenga, A., 2012. Haltes de chasse du Châtelperronien de la Péninsule Ibérique. *Labeko Koba et Ekain (Pays Basque Péninsulaire)*. *Anthropologie* 116, 532–549.

Rios-Garaizar, J., Gárate Maidagan, D., Iriarte Avilés, E., Cearreta Bilbao, A., Iriarte Chiapusso, M. J., 2010. Los yacimientos de Mendieta I y II (Sopelana, Bizkaia): dos ocupaciones al aire libre del Paleolítico Inferior y Medio. *Kobie (Paleoantropología)* 29, 7–18.

Rios-Garaizar, J., García-Moreno, A., 2015. Middle Paleolithic Mobility Patterns and Settlement System Variability in the Eastern Cantabrian Region (Iberian Peninsula): A GIS-Based Resource Patching Model. In: Conard, N.J., Delagnes, A. (Eds.), *Settlement Dynamics of the Middle Paleolithic and Middle Stone Age Vol 4.*, Kerns Verlag, Tübingen, pp. 329–360.

Rios-Garaizar, J., Libano Silvente, I., Gárate Maidagan, D., Gómez-Olivencia, A., Regalado Bueno, E., 2013a. Nuevas localizaciones arqueológicas al aire libre del Paleolítico Inferior y Medio en las cuencas del Gobela y del Udondo (Bizkaia). *Kobie (Paleoantropología)* 32, 39–60.

Rios-Garaizar, J., de la Peña, P., & Maíllo-Fernández, J. M., 2013. El final del Auriñaciense y el comienzo del Gravetiense en la región cantábrica: una visión tecno-tipológica. In: de las Heras, C.; Lasheras, J. A.; Arrizabalaga, A.; de la Rasilla, M. (Eds.), *Pensando el Gravetiense: nuevos datos para la región cantábrica en su contexto peninsular y pirenaico*. *Monografías del Museo Nacional y Centro de Investigación de Altamira 23*, Madrid, Ministerio de Educación, Cultura, pp. 369–382.

Rios-Garaizar, J., Eixea, A., Villaverde, V., 2015. Ramification of lithic production and the search of small tools in Iberian Peninsula Middle Paleolithic. *Quaternary International* 361, 188–199.

Rissetto, J. D., 2008. Siliceous raw materials from Eastern Cantabria, Spain. Retrieved from http://www.flintsource.net/flint/infE_cantabria.html

Rofes, J., García-Ibaibarriaga, N., Aguirre, M., Martínez-García, B., Ortega, L., Zuluaga, M.C., Bailón, S., Alonso-Olazabal, A., Castaños, J., Murelaga, X., 2015. Combining Small-Vertebrate, Marine and Stable-Isotope Data to Reconstruct Past Environments. *Science Reports* 5, 14219.

Rosas González, A., Estalrich, A., García-Taberner, A., Huguet, R., Lalueza-Fox, C., Ríos, L., Bastir, M., Fernández-Cascón, B., Pérez-Criado, L., Rodríguez-Pérez, F.J., Ferrando, A., Fernández-Cerezo, S., Sierra, E., de la Rasilla, M., 2015. Investigación paleoantropológica de los fósiles neandertales de El Sidrón (Asturias, España). *Cuaternario y Geomorfología* 29, 77.

Rostro Carmona, J., 2013. Estudio comparado de las piezas dentales de *Homo neanderthalensis* del yacimiento Musteriense de Axlor (Dima, Vizcaya). *CKQ Estudios de Cuaternario / Kuaternario Ikasketak / Quaternary Studies* 3, 91–100.

Ruiz Zapata, M.B., Gil García, M.J., 2007. Paleoambiente en el Abrigo de "El Cuco". In: Muñoz, E., Montes, R. (Eds.), *Intervenciones arqueológicas en Castro Urdiales*. Tomo III. Arqueología y Arte Rupestre Paleolítico en las cavidades de El Cuco o Sobera y La Lastrilla. Excmo. Ayuntamiento de Castro Urdiales, Concejalía de Medioambiente y Patrimonio Arqueológico, Castro Urdiales, pp. 171-177.

Sánchez Fernández, G., Maillo Fernández, J.M., 2007. Soportes laminares en el musteriense final cantábrico: el nivel 20e de la cueva de El Castillo. In: Maillo Fernández, J.M., Baquedano, E. (Eds.), *Miscelánea En Homenaje a Victoria Cabrera*, Zona Arqueológica 7. Comunidad de Madrid: Museo Arqueológico Regional, Madrid, pp. 264–273.

Sánchez-Fernández, G., Bernaldo de Quirós, F., 2008. El final del Musteriense Cantábrico: el nivel 20e de la Cueva de El Castillo (Cantabria). *Férvedes* 5, 117–126.

Sanguino, J., Montes Barquín, R., 2005. Nuevos datos para el conocimiento del Paleolítico Medio en el centro de la Región Cantábrica: la cueva de Covalejos (Piélagos, Cantabria). In: Montes Barquín, R., Lasheras Corrucho, J.A. (Eds.), *Actas de la Reunión Científica: Neandertales Cantábricos, estado de la cuestión*. Monografías del Museo Nacional y Centro de Investigación de Altamira 20. Ministerio de Cultura, Madrid, pp. 489–504.

Santamaría Álvarez, D., 2012. La transición del Paleolítico medio al superior en Asturias. El abrigo de La Viña (Oviedo, Asturias) y la cueva de El Sidrón (Borines, Piloña). Servicio de Publicaciones de la Universidad de Oviedo, Oviedo.

Santamaría, D., Fordea, J., de La Rasilla, M., Martínez, L., Martínez, E., Cañaveras, J.C., Sánchez-Moral, S., Rosas, A., Estalrich, A., García-Taberner, A., Lalueza-Fox, C., 2010. The technological and typological behaviour of a neanderthal group from El Sidrón cave (Asturias, Spain). *Oxford Journal of Archaeology* 29, 119–148.

Sarabia, P., 1995. Las estrategias de aprovisionamiento de materias primas líticas en la Transición del Paleolítico Medio- Superior en Cantabria. In: *Actas Del XXII Congreso Nacional de Arqueología (1993)*. Xunta de Galicia, Consellería de Cultura, Comunicación Social e Turismo, Vigo, pp. 357–365.

Szmidt, C.C., Normand, C., Burr, G.S., Hodgins, G.W.L., LaMotta, S., 2010. AMS 14C dating the Protoaurignacian/Early Aurignacian of Isturitz, France. Implications for Neanderthal-modern human interaction and the timing of technical and cultural innovations in Europe. *Journal of Archaeological Science* 37, 758–768.

Soares, A.M.M., Martins, J.M.M., 2009. Radiocarbon dating of marine shell samples. The marine radiocarbon reservoir effect of coastal waters off Atlantic Iberia during Late Neolithic and Chalcolithic Periods. *Journal of Archaeological Science* 36, 2875-2881.

Stringer, C.B., Barton, N., Currant, A.P., Cáceres, I., Fernández-Jalvo, Y., Finlayson, C., Giles Pacheco, F., Rhodes, E.J., Riquelme Cantal, J.A., Rodríguez Vidal, J., 2008. Neanderthal exploitation of marine mammals in Gibraltar. *Proceedings of the National Academy of Sciences* 105, 14319-14324.

Stuiver, M., Braziunas, T.F., 1993. Modelling atmospheric ^{14}C influences and ^{14}C age of marine samples back to 10,000 BC. *Radiocarbon* 35, 137-189.

Tafelmaier, Y., Pastoors, A., 2013. The Middle-Upper Palaeolithic transition at El Castillo (Spain), in: Pastoors, A., Auffermann, B. (Eds.), *Pleistocene Foragers: Their Culture and Environment*. Neanderthal Museum, Mettmann, pp. 35–50.

Tarriño, A., Elorrieta, I., García-Rojas, M., 2015. Flint as raw material in prehistoric times: Cantabrian Mountain and Western Pyrenees data. *Quaternary International* 364, 94–108.

Taylor, R.E., 1987. *Radiocarbon Dating. An Archaeological Perspective*. Academic Press, Inc., Orlando.

Torres, T., Ortiz, J.E., Grün, R., Eggins, S., Valladas, H., Mercier, N., Tisnérat-Laborde, N., Juliá, R., Soler, V., Martínez, E., Sánchez-Moral, S., Cañaveras, J.C., Lario, J., Badal, E., Lalueza-Fox, C., Rosas, A., Santamaría, D., de La Rasilla, M., Fordea, J., 2010. Dating of the hominid (*Homo neanderthalensis*) remains accumulation from el Sidrón cave (Piloña, Asturias, north Spain): an example of a multi-methodological approach to the dating of upper Pleistocene sites. *Archaeometry* 52, 680–705.

Van Klinken, G.J., 1999. Bone collagen quality indicators for palaeodietary and radiocarbon measurements. *Journal of Archaeological Science* 22, 263-270.

Van Strydonck, M., Boudin, M., Mulder, G., 2010. The carbon origin of structural carbonate in bone apatite of cremated bones. *Radiocarbon* 52, 578-586.

Villaverde, V., Martínez-Valle, R., Guillem, P.M., Fumanal, M.P., 1996. Mobility and the role of small game in the middle Paleolithic of the central region of the Spanish Mediterranean: a comparison of Cova Negra with other Paleolithic deposits. In: Carbonell, E., Vaquero, M. (Eds.), *The Last Neanderthals, The First Anatomically Modern Humans*. Universitat Rovira i Virgili, Tarragona, pp. 267-288.

Villaverde, V., Aura, J.E., Barton, C.M., 1998. The Upper Paleolithic in Mediterranean Spain: A Review of Current Evidence. *Journal of World Prehistory* 12, 121-198.

Vogel, J.S., Southen, J.-R., Nelson, D.E., Brown, T.A., 1984. Performance of catalytically condensed carbon for use in accelerator mass spectrometry. *Nuclear Instruments and Methods in Physics Research B5* 223, 289-293.

Wood, R.E., Barroso-Ruiz, C., Caparrós, M., Jordá Pardo, J.F., Galván Santos, B., Higham, T.F.G., 2013. Radiocarbon dating casts doubt on the late chronology of the Middle to Upper Palaeolithic transition in southern Iberia. *Proceedings of the National Academy of Sciences* 110, 2781-2786.

Wood, R.E., Arrizabalaga, A., Camps, M., Fallon, S., Iriarte-Chiapusso, M.J., Jones, R., Maroto, J., de La Rasilla, M., Santamaría, D., Soler, J., Soler, N., Villaluenga, A., Higham, T.F.G., 2014. The chronology of the earliest Upper Palaeolithic in northern Iberia: New insights from L'Arbreda, Labeko Koba and La Viña. *Journal of Human Evolution* 69, 91-109.

Wood, R.E., Higham, T.F.G., Torres, T., Tisnérat-Laborde, N., Valladas, H., Ortiz, J.E., Lalueza-Fox, C., Sánchez-Moral, L.S., Cañaveras, J.C., Rosas, A., Santamaría, D., de la Rasilla, M., 2013. A new date for the neanderthals from El Sidrón cave (Asturias, Northern Spain). *Archaeometry* 55, 148–158.

Yravedra, J., 2013. New Contributions on Subsistence Practices during the Middle-Upper Paleolithic in Northern Spain. In: Clark, J.L., Speth, J.D. (Eds.), *Zooarchaeology and Modern Human Origins. Human Hunting Behavior during the Later Pleistocene. Vertebrate Paleobiology and Paleoanthropology*. Springer, pp. 59–75.

Zazzo, A., Saliège, J.F., 2011. Radiocarbon dating of biological apatites: A review. *Palaeogeography, Palaeoclimatology, Palaeoecology* 310, 52-61.

Zilhão, J., Angelucci, D.E., Badal-García, E., d'Errico, F., Daniel, F., Dayet, L., Douka, K., Higham, T.F.G., Martínez-Sánchez, M.J., Montes-Bernárdez, R., Murcia-Mascarós, S., Pérez-Sirvent, C., Roldán-García, C., Vanhaeren, M., Villaverde, V., Wood, R., Zapata, J., 2010. Symbolic use of marine shells and mineral pigments by Iberian Neandertals. *Proceedings of the National Academy of Sciences Early Edition*, 1-6.

Zilhão, J., 2012. Los Neandertales del fin del mundo: resultados recientes. In: Turbón Borrega, D., Fañanás Saura, L., Rissech Badalló, C., Rosa de la Cruz, A. (Eds.), *Biodiversidad humana y Evolución*. Universidad de Barcelona, Sociedad Española de Antropología Física (SEAF), Laboratorios URIACH, Ministerio de Economía y Competitividad, Barcelona, pp. 68-77.

* * * * *

Figures and Tables

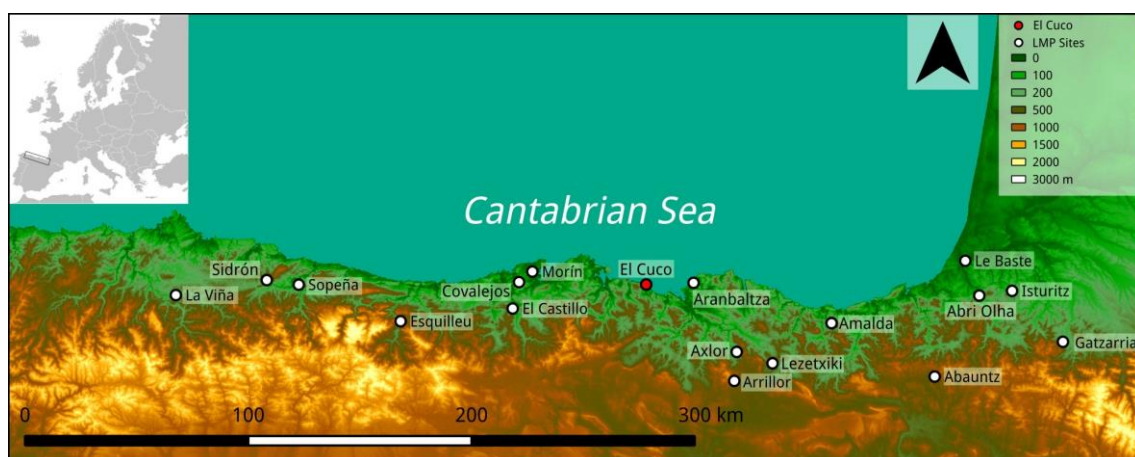


Figure 1: Map of the Cantabrian region with the main sites mentioned in the text.

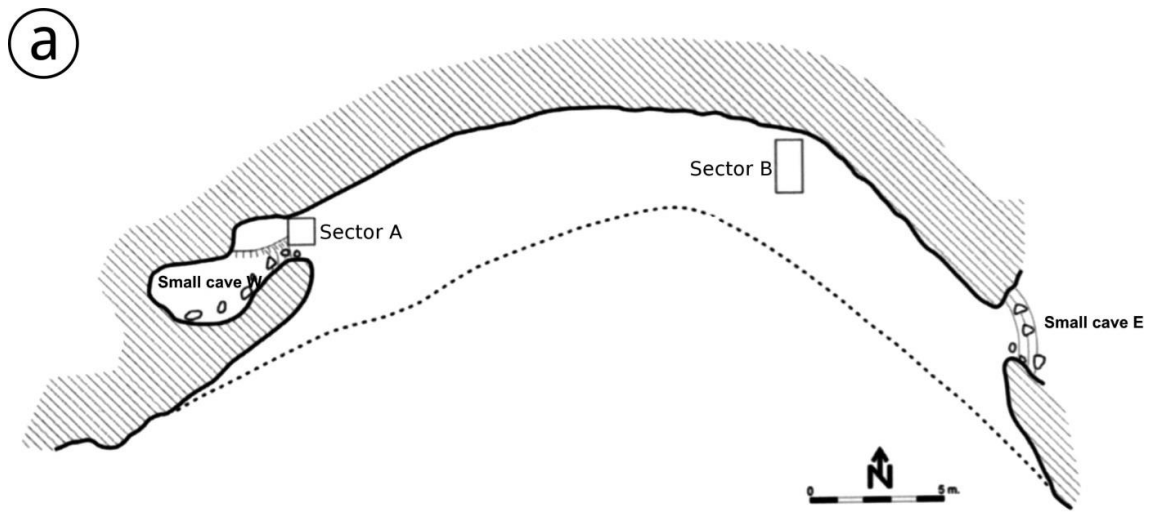


Figure 2: a: Synthetic plan of the El Cuco rock-shelter with the position of the excavated sectors (A and B). b: General view of the rock-shelter during the excavation in 2005.

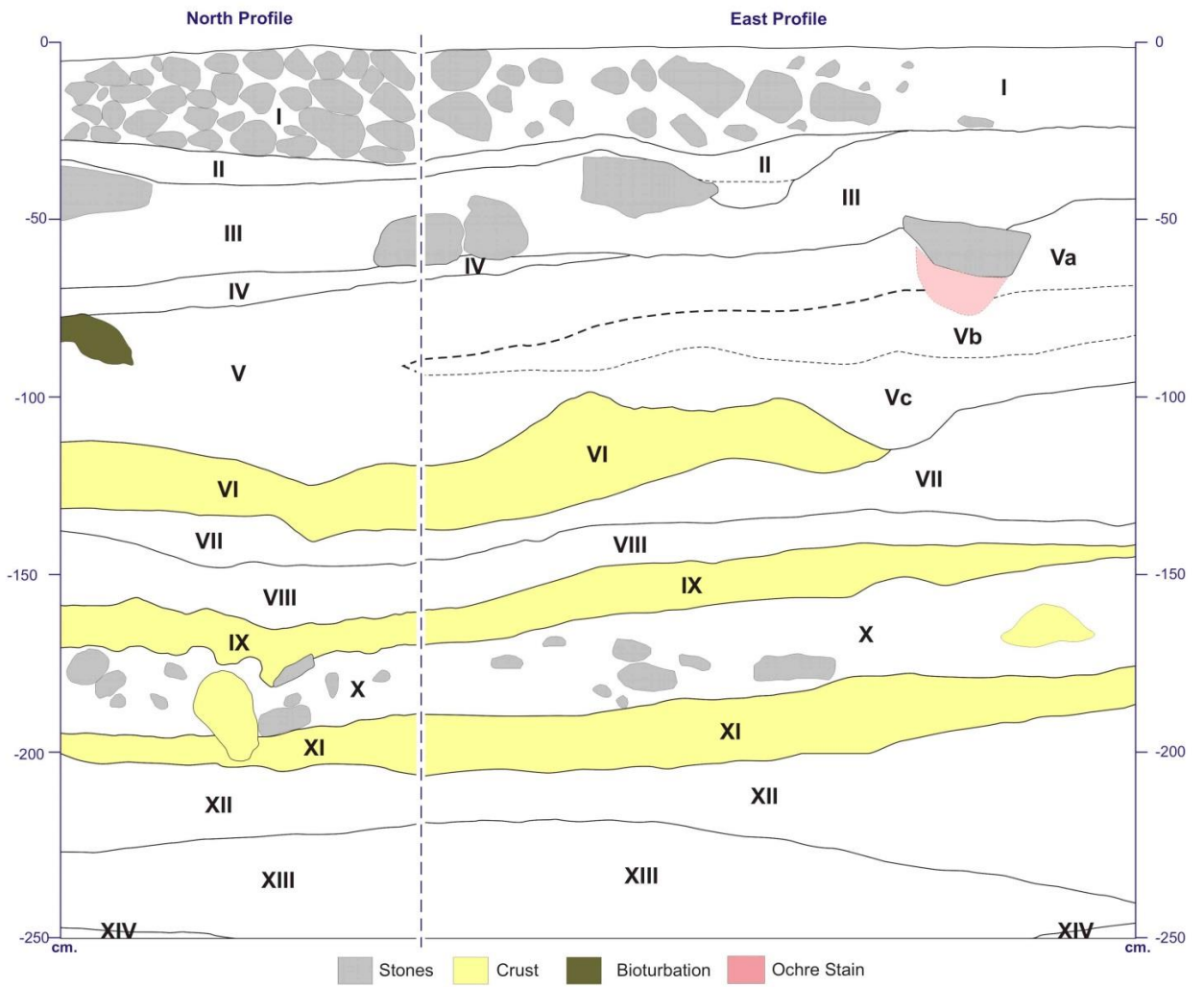


Figure 3: North and East stratigraphic profiles from the test pit excavated in Sector B.

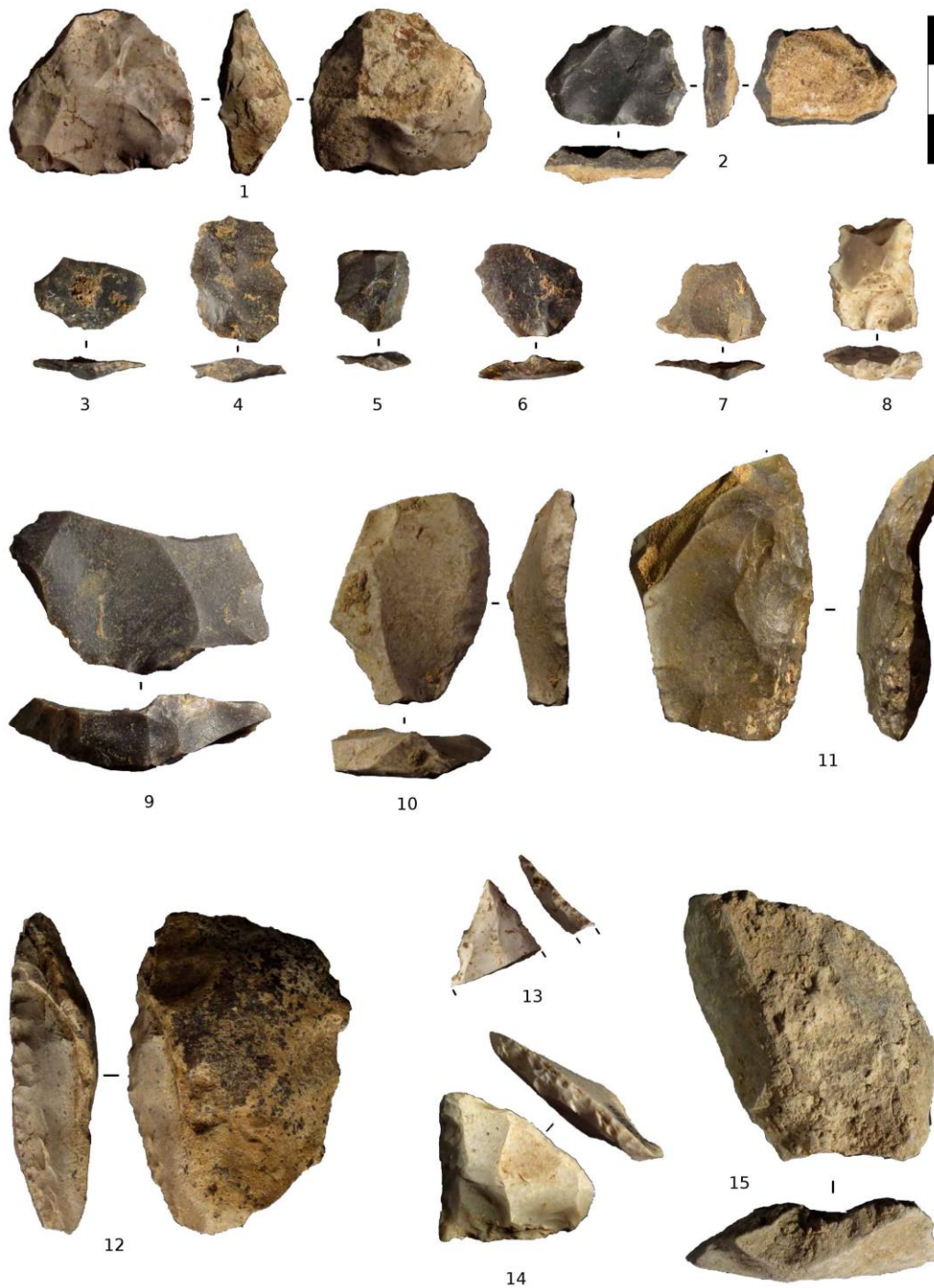


Figure 4: Lithic materials from level VII at El Cuco. 1-2: Small Levallois cores; 3: Kombewa flake with prepared platform; 4-8: Small Levallois Flakes; 9: Levallois flake; 10-12: Lateral side-scrapers; 13: Distal fragment of Mousterian point; 14: Convergent side-scraper; 15: Limestone flake.

Sample ID	Lab Ref	Level	Spit	Material	Element	Taxa	Date BP	$\delta^{13}\text{C}$	Method
CU.X.B	UGAMS-907	X	20	Bone	Diaphysis	Ungulate	14550±80	-21.2	^{14}C AMS
CU.X.B1	P-32155	X	20	Bone	Metapod	<i>Cervus elaphus</i>	No collagen		^{14}C AMS
CU.X.8	OxA-27196	X	20	Shell		<i>Patella vulgata</i>	42350 ± 700	0.08	^{14}C AMS
CU.X.6	OxA-27115	X	20	Shell		<i>Patella vulgata</i>	46200 ± 650	-0.46	^{14}C AMS
CU.XII.7	Beta - 382681	XII	22	Shell		<i>Patella vulgata</i>	>43500	0.8	^{14}C AMS
CU.XIII.S1	OxA-30851	XIII	24	Shell		<i>Patella vulgata</i>	46400 ± 800	0.85	^{14}C AMS
CUCO 5	P-35524	XIII	25	Bone	Non identifiable	Ungulate	No collagen		^{14}C AMS
CUCO 6	P-35523	XIV	26	Bone	Non identifiable	Ungulate	No collagen		^{14}C AMS

Table 1: New radiocarbon dates on bones and shells from El Cuco rock-shelter and samples that failed to be dated due to poor bone collagen preservation.

Level	Species	Element	Sample	% Collagen	$\delta^{13}\text{C}$	$\delta^{15}\text{N}$	%C	%N	C:N
VII	<i>C. elaphus</i>	carpal	CUC17	0.2	-20.06	5.06	41.80	15.17	3.21
VII	<i>C. elaphus</i>	pelvis	CUC18	0.3	-20.51	7.98	28.34	9.79	3.38
VII	<i>C. elaphus</i>	pelvis	CUC19	0.0	n/a	n/a	n/a	n/a	n/a
VII	<i>C. elaphus</i>	humerus	CUC20	0.4	-20.50	5.56	15.84	5.76	3.22
VII	<i>C. elaphus</i>	tibia	CUC21	0.7	-21.21	5.91	6.51	3.58	2.13
VII	<i>C. elaphus</i>	metatarsal	CUC22	0.7	-13.07	0.00	0.34	0.00	-
VII	<i>C. elaphus</i>	metacarpal	CUC23	0.5	-20.58	4.10	6.05	2.78	2.54
VII	<i>C. elaphus</i>	metatarsal	CUC24	0.4	-21.60	2.89	2.40	1.14	2.46
VIII	<i>C. elaphus</i>	metacarpal	CUC25	0.0	n/a	n/a	n/a	n/a	n/a
VIII	<i>C. elaphus</i>	femur	CUC26	0.3	-20.26	4.58	22.01	7.97	3.23
VIII	<i>C. elaphus</i>	femur	CUC27	0.0	n/a	n/a	n/a	n/a	n/a
X	<i>C. elaphus</i>	metacarpal	CUC28	0.5	-13.45	0.00	0.33	0.00	-
X	<i>C. elaphus</i>	1st phalanx	CUC29	0.5	-12.68	-1.59	0.63	0.08	-
X	<i>C. elaphus</i>	tibia	CUC30	0.0	n/a	n/a	n/a	n/a	n/a
X	<i>C. elaphus</i>	metapodial	CUC32	0.4	-12.63	0.00	0.42	0.00	-
X	<i>C. elaphus</i>	humerus	CUC31	0.3	-12.52	0.00	0.36	0.00	-
X	<i>C. elaphus</i>	tibia	CUC33	0.4	-25.85	0.00	0.75	0.00	-
XII	<i>C. elaphus</i>	tibia	CUC34	0.4	0.00	0.00	0.00	0.00	-
XII	<i>C. elaphus</i>	metacarpal	CUC40	0.2	-12.87	0.00	0.33	0.00	-
XIII	<i>C. elaphus</i>	metacarpal	CUC35	0.6	-12.58	0.00	0.34	0.00	-
XIII	<i>C. elaphus</i>	metatarsal	CUC36	0.1	0.00	0.00	0.00	0.00	-
XIII	<i>C. elaphus</i>	1st phalanx	CUC37	0.5	-13.19	0.00	0.44	0.00	-
XIII	<i>C. elaphus</i>	tibia	CUC38	0.0	n/a	n/a	n/a	n/a	n/a
XIII	<i>C. elaphus</i>	metatarsal	CUC39	0.1	n/a	n/a	n/a	n/a	n/a
XIII	<i>C. elaphus</i>	metacarpal	CUC41	0.0	n/a	n/a	n/a	n/a	n/a
XIII	<i>C. elaphus</i>	metatarsal	CUC42	0.0	n/a	n/a	n/a	n/a	n/a

Table 2: Results on collagen (%) and carbon and nitrogen isotope ratios ($\delta^{13}\text{C}$ and $\delta^{15}\text{N}$, %C, %N, C:N) from ungulate bones.

Sample	Level	Spit	Weight (mg)	% Carbon	% Nitrogen
P05	X	20	1.096	5.23	0.05
P06	X	20	1.440	3.09	0.02
P07	X	20	1.251	2.76	0.00
P08	XI	21	1.342	3	0.01
P09	XI	21	1.223	4.59	0.00
P10	XI	21	1.321	3.84	0.07
P11	XII	22	1.352	3.68	0.57
P11	XII	22	1.062	3.72	0.49
P12	XII	22	1.401	6.38	0.02
P13	XII	22	1.117	3.66	0.00
P14	XIII	24	1.171	2.14	0.02
P15	XIII	24	1.163	2.22	-0.02
P16	XIII	24	1.079	1.89	-0.02
S05	XIII	25	1.449	1.98	0.00
S06	XIV	26	1.419	1.73	-0.01

Table 3: Results on elemental analysis (%C and %N) from ungulate bones. The analysis of sample P11 was duplicated and in both cases results were close to 0.5%. We present here the mean of the two values.