



Deposited via The University of Leeds.

White Rose Research Online URL for this paper:

<https://eprints.whiterose.ac.uk/id/eprint/119088/>

Version: Supplemental Material

---

**Article:**

Sampson, J, O'Regan, L, Dyer, MJS et al. (2017) Hsp72 and Nek6 cooperate to cluster amplified centrosomes in cancer cells. *Cancer Research*, 77 (18). pp. 4785-4796. ISSN: 0008-5472

<https://doi.org/10.1158/0008-5472.CAN-16-3233>

---

© 2017 American Association for Cancer Research. This is an author produced version of a paper published in *Cancer Research*. Uploaded in accordance with the publisher's self-archiving policy.

**Reuse**

Items deposited in White Rose Research Online are protected by copyright, with all rights reserved unless indicated otherwise. They may be downloaded and/or printed for private study, or other acts as permitted by national copyright laws. The publisher or other rights holders may allow further reproduction and re-use of the full text version. This is indicated by the licence information on the White Rose Research Online record for the item.

**Takedown**

If you consider content in White Rose Research Online to be in breach of UK law, please notify us by emailing [eprints@whiterose.ac.uk](mailto:eprints@whiterose.ac.uk) including the URL of the record and the reason for the withdrawal request.

## **Supplementary Data**

### **Hsp72 and Nek6 cooperate to cluster amplified centrosomes in cancer cells**

**Josephina Sampson<sup>1</sup>, Laura O'Regan<sup>1</sup>, Martin J.S. Dyer<sup>2</sup>, Richard Bayliss<sup>3</sup> and Andrew M. Fry<sup>1</sup>**

<sup>1</sup>Department of Molecular and Cell Biology, and <sup>2</sup>Ernest and Helen Scott Haematological Research Institute, University of Leicester, Lancaster Road, Leicester LE1 9HN, U.K.

<sup>3</sup>Astbury Centre for Structural Molecular Biology, Faculty of Biological Sciences, University of Leeds, Leeds LS2 9JT, U.K.

## **SUPPLEMENTARY MATERIAL**

### **Supplementary Figure S1. Protein expression of Hsp72, Hsc70, Nek6 and Nek7 in different cell types following different treatments**

**A.** Western blots of Hsp72, Hsc70 and GAPDH in MDA-MB-231 cells that were mock-depleted or depleted with siRNAs against GAPDH or human Hsp72 (oligo 6 and oligo 7). **B.** Western blots of Hsp72, Hsc70 and GAPDH in NIE-115 cells that were mock-depleted or depleted with siRNAs against GAPDH or mouse Hsp72 (oligo 5 and oligo 7). **C.** Western blots of Nek6, Nek7 and GAPDH in MDA-MB-231 cells that were mock-depleted or depleted with siRNAs as indicated. **D.** Western blots of Nek6, Nek7 and GAPDH in MDA-MB-231 cells that were mock-depleted or depleted with siRNAs against GAPDH, Nek6 or Nek7. **E.** Western blots of Hsp72, Hsc70, Nek6 and GAPDH in PBL and ALL cells. **F.** Western blots of Nek6, Hsp72 and GAPDH in MDA-MB-231 cells that were either untreated (control) or incubated for 4 hours with Aurora-A (AurA) or Plk1 inhibitors. M. wts (kDa) are shown on the left of each panel.

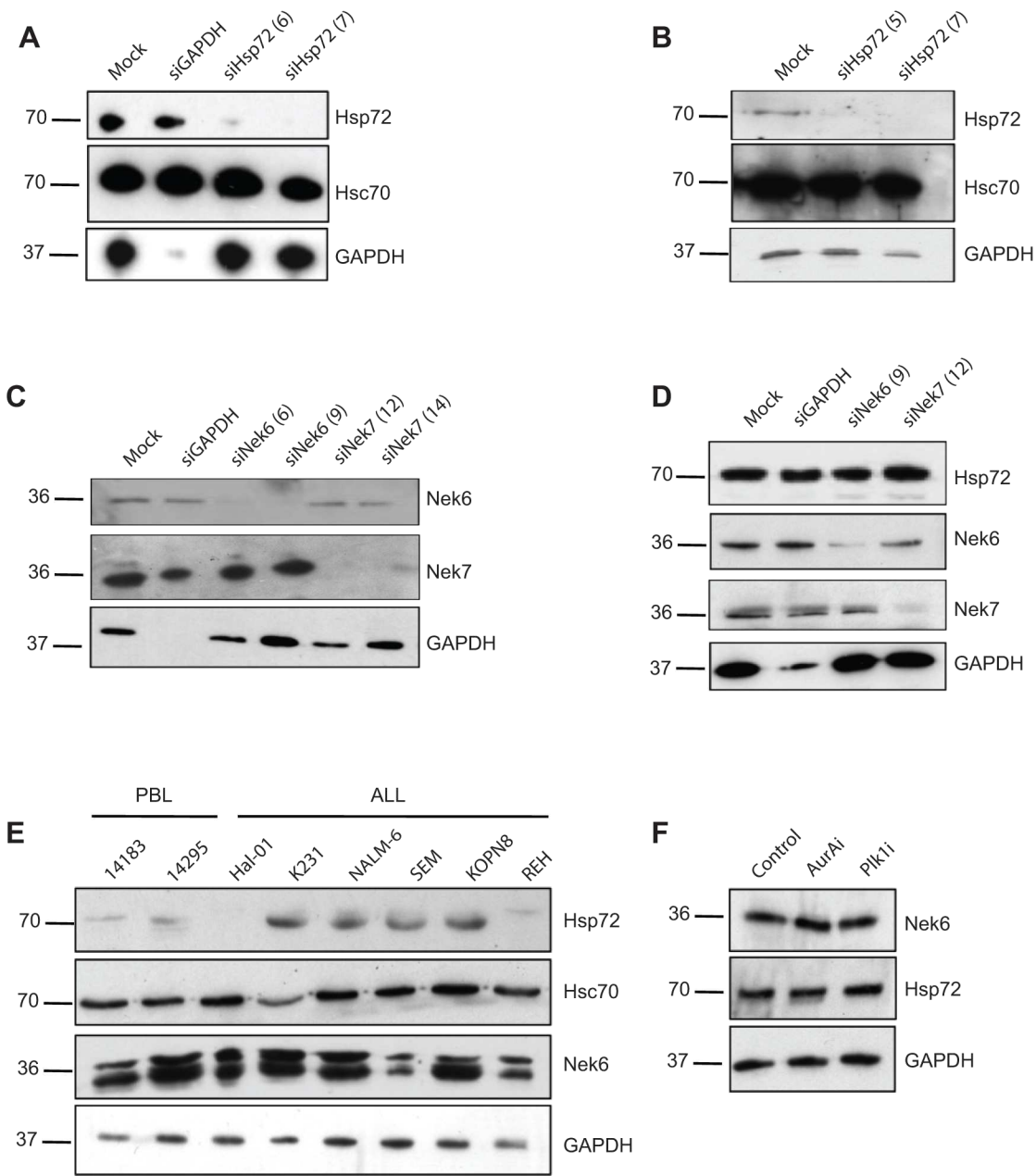
### **Supplementary Figure S2. Hsp70 inhibition does not block clustering of acentrosomal spindle poles.**

**A.** Time-course for microtubule regrowth assay used in Fig. 4E-G. **B, C.** NIE-115 (B) and HeLa (C) cells were incubated with nocodazole according to the protocol shown in Supp. Fig. S2A before being transferred to nocodazole-free media with or without 10  $\mu$ M Hsp70i. Cells were fixed at the times indicated and stained with  $\alpha$ -tubulin (top panels; red in merge). Merge panels also include centrin-2 (green) and DNA (blue). Scale bars, 5  $\mu$ m.

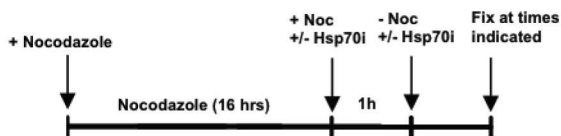
### **Supplementary Figure S3. Hsp70 inhibition does not perturb mitotic progression in RPE1 cells**

**A.** HeLa and RPE1 cells were either untreated (control) or treated with Hsp70i as indicated for 4 h before being fixed and stained for phospho-histone H3 (pHH3, red) and DNA (blue). Magnified views of mitotic cells are shown. Scale bar, 50  $\mu$ m. **B.** RPE1 cells were incubated with SiR-tubulin

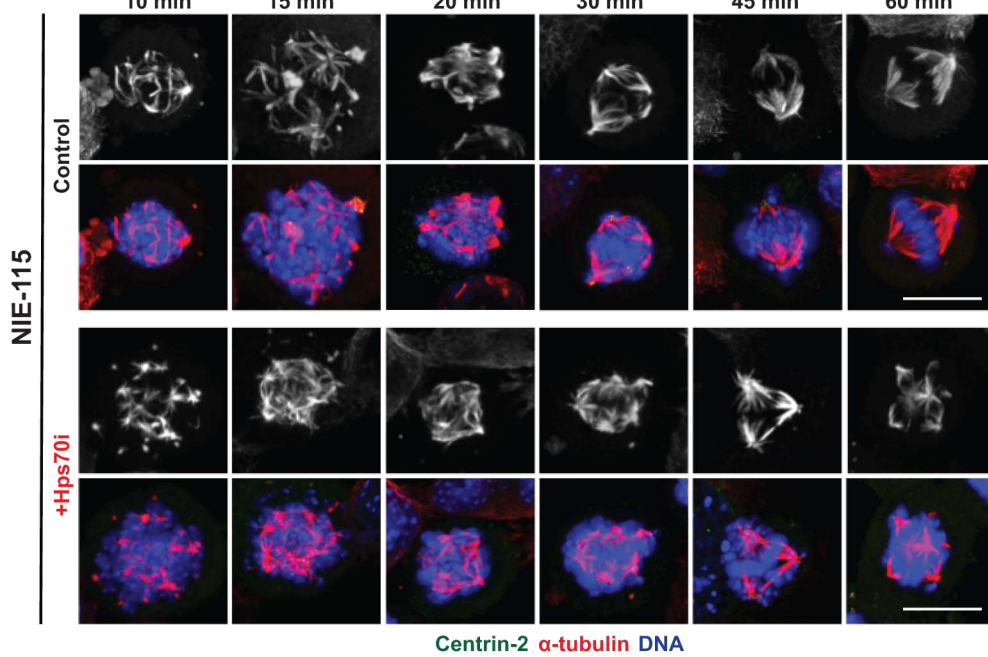
for 7 h prior to time-lapse confocal imaging with images captured every 7 mins. Stills are shown of SiR-tubulin alone or merged with brightfield (BF) at the times indicated from control or Hsp70i-treated cells. Scale bar, 20  $\mu$ m. **C.** Time-lapse imaging was used to follow RPE1 cells in the absence (control) or presence of Hsp70i. Each bar is representative of a single cell with the time spent in each stage of mitosis indicated (see Fig. 2B). **D.** Western blots for the proteins indicated were used to assess relative expression in MDA-MB-231, HeLa, RPE1 and HBL-100 cells. M. wts (kDa) are indicated. **E.** The protein expression of Hsp72 and Nek6 was determined relative to GAPDH for each cell line from D; n=2.



A



B



C

