



OPEN ACCESS

The intervention effect of local alcohol licensing policies on hospital admission and crime: a natural experiment using a novel Bayesian synthetic time-series method

Frank de Vocht,^{1,2} Kate Tilling,^{1,2} Triantafyllos Pliakas,^{1,3} Colin Angus,^{1,4} Matt Egan,^{1,3} Alan Brennan,^{1,4} Rona Campbell,^{1,2} Matthew Hickman^{1,2}

► Additional material is published online only. To view please visit the journal online (<http://dx.doi.org/10.1136/jech-2017-208931>).

¹NIHR School for Public Health Research, Sheffield, UK

²School of Social and Community Medicine, University of Bristol, Bristol, UK

³Faculty of Public Health and Policy, London School of Hygiene and Tropical Medicine, London, UK

⁴SCHARR School of Health and Related Research, University of Sheffield, Sheffield, UK

Correspondence to

Dr Frank de Vocht, School of Social and Community Medicine, University of Bristol, Canynge Hall, 39 Whatley Road, Bristol BS8 2PS, UK; frank.devocht@bristol.ac.uk

Received 12 January 2017

Revised 6 April 2017

Accepted 17 May 2017

ABSTRACT

Background Control of alcohol licensing at local government level is a key component of alcohol policy in England. There is, however, only weak evidence of any public health improvement. We used a novel natural experiment design to estimate the impact of new local alcohol licensing policies on hospital admissions and crime.

Methods We used Home Office licensing data (2007–2012) to identify (1) interventions: local areas where both a cumulative impact zone and increased licensing enforcement were introduced in 2011; and (2) controls: local areas with neither. Outcomes were 2009–2015 alcohol-related hospital admissions, violent and sexual crimes, and antisocial behaviour. Bayesian structural time series were used to create postintervention synthetic time series (counterfactuals) based on weighted time series in control areas. Intervention effects were calculated from differences between measured and expected trends. Validation analyses were conducted using randomly selected controls.

Results 5 intervention and 86 control areas were identified. Intervention was associated with an average reduction in alcohol-related hospital admissions of 6.3% (95% credible intervals (CI) –12.8% to 0.2%) and to lesser extent with a reduced in violent crimes, especially up to 2013 (–4.6%, 95% CI –10.7% to 1.4%). There was weak evidence of an effect on sexual crimes up 2013 (–8.4%, 95% CI –21.4% to 4.6%) and insufficient evidence of an effect on antisocial behaviour as a result of a change in reporting.

Conclusion Moderate reductions in alcohol-related hospital admissions and violent and sexual crimes were associated with introduction of local alcohol licensing policies. This novel methodology holds promise for use in other natural experiments in public health.

INTRODUCTION

Aggregate levels of alcohol consumption have been associated with alcohol-related harms including a wide range of health conditions and criminal offences. There is extensive international evidence that population-level interventions aimed at reducing consumption, including price controls, regulating availability and altering the drinking context, can have a positive effect on the incidence of alcohol-related harms.¹ Alcohol licensing in England is under the control of local councils, rather than national

government and one of the main strategies councils can use is to restrict the spatial and/or temporal availability of alcohol.² To that end the 2003 Licensing Act³ has, since additional guidance issued in 2005,⁴ revolved around four statutory licensing objectives: the prevention of crime and disorder, public safety, the prevention of public nuisance and the protection of children from harm. In addition to existing alcohol licensing policies at the level of individual premises, this legislation gave local authorities discretionary powers to develop cumulative impact policies, in which, in specific areas termed cumulative impact zones (CIZs), the usual burden of proof is reversed such that new licence applications must demonstrate that the premises will not negatively impact on the licensing objectives.⁵ As a consequence of the significant geographical variation in alcohol-related harm⁶ and the priority that addressing these harms has in the wider public health arena,^{5,7,8} there is considerable variation in the means and the extent to which councils use licensing policies to attempt to mitigate the health and social harms of alcohol misuse.

We previously showed that the intensity of local alcohol licensing policies, estimated using a composite measure of the presence of a CIZ and/or rejection of any new premises licensing applications in the area, was associated with beneficial effects on alcohol-related local crime rates,⁹ thereby directly addressing the licensing objectives, but additionally that they had a positive effect on population health through a stronger reduction in alcohol-related hospital admissions in areas with the highest intensity approach.¹⁰ However, these analyses did not seek to account for differences in uptake of CIZ and licensing policies over time or select controls in a systematic way to strengthen evidence of an effect.

A previous systematic review indicated that the impact of change in alcohol consumption on outcome is almost immediate, for many outcomes.¹¹ Here we aim to use this to improve the inference and strength of evidence by exploiting the spatial and temporal variability in the local delivery and intensity of alcohol licensing policies across England; creating a natural experiment. This natural experiment will be analysed using Bayesian structural time series within a novel causal impact framework to enable direct comparison to counterfactual synthetic control time series describing what would have happened without the introduction of new licensing policies.



CrossMark

To cite: de Vocht F, Tilling K, Pliakas T, et al *J Epidemiol Community Health* Published Online First: [please include Day Month Year]. doi:10.1136/jech-2017-208931

METHODS

Outcome

We used data on (1) quarterly directly age-standardised (to the European standard population) alcohol-related hospital admission rates per 100 000 people from the Local Alcohol Profiles for England aggregated at principal authority geographical level for the years 2009–2015,¹² and (2) quarterly data of reported violence against the person (with or without injury), sexual crimes and antisocial behaviour aggregated at the same geographical level from the UK Office of National Statistics (ONS)¹³ also for the years 2009–2015. The 'narrow measure' was used to define alcohol-related hospital admissions which consist of only those admissions for which the primary diagnosis is an alcohol-related condition or where an alcohol-related external cause is a secondary diagnosis.^{14 15} Alcohol-related reported violent crime and sexual crime rates were calculated, in line with methodology used by Public Health England, by multiplying the reported counts by their 37% and 13% alcohol-attributable fraction (AAF),¹⁴ respectively, and these were then divided by the corresponding area population sizes for the corresponding year obtained from ONS¹⁶ to obtain rates per 1000 people. Reported antisocial behaviour rates were similarly calculated, but without adjustment for alcohol attribution as no AAF could be identified.

Natural experiment

Data on local alcohol licensing practices for England were obtained for the years 2007–2012 from the UK Home Office.¹⁷ To set up the natural experiment, we sought to compare areas with maximum contrast in the intervention. We thus identified 'intervention areas' as those areas with no specified CIZ and no rejection of new licensing applications in 2007/2008, but with both implemented in 2011/2012 and thereafter (both definitions used in ref.¹⁰). Using these data we were further able to determine whether the intervention was introduced before or after mid-2011. 'Control areas' were then defined as those areas which had no CIZ and no recorded rejection of new licensing applications throughout the 2009–2015 time period.

We excluded areas with missing intervention information or that could not be linked because of boundary changes (n=76), areas which reported CIZ or rejection of new licensing applications in 2011/2012, but not both (n=129), and areas which had a CIZ and/or rejection of new licensing applications throughout 2009–2015, but reported no changes in this time period, and thus has no 'intervention effect' (n=57). Thus, of the 353 principal authorities in England, 5 were classified as intervention areas (Kingston upon Thames, Derby, Enfield, Southwark and North Tyneside), and 86 met the criteria for control areas.

Statistical methodology

Overview

We use structural time-series models (ie, state-space models for time series) combined with Bayesian spike-and-slab regression to estimate and compare the impact of the alcohol licensing policy change in the time period covered by available data in each 'intervention area' with the synthetic time series in which the policy had not happened; that is, its counterfactual.¹⁸ The aim was (1) to create, for each intervention area, a synthetic time series which is similar to the measured time series in the intervention area before the intervention took place by weighted average of the time series in all control areas, and then (2) to use the prior synthetic time series to predict what would have happened in the absence of the intervention (ie, the counterfactual).^{19 20} Under the assumption that the relationship between the intervention and synthetic

time series that existed prior to the intervention remains constant post intervention, this then describes the counterfactual time series for the intervention area. By subtracting this modelled synthetic time series from the measured alcohol-related hospital admission or crime rates in the intervention area (post intervention), a semi-parametric Bayesian posterior distribution for the effect of the intervention is obtained.

Creating synthetic time series

The Bayesian structural time-series method is outlined in online supplementary data and is described in detail elsewhere.^{21 22} It comprises an observation equation linking the observed data over time to a set of latent variables (the 'state') and which is linked to a transition equation which describes the evolution of the state over time. A 'spike-and-slab prior' is placed on the regression coefficients of all control areas included in the pre-intervention model.²³ The framework further includes a regression component which enables the construction of a synthetic time series based on weighted combinations of the control areas.

The postintervention synthetic time series is then constructed from time series in all control areas weighted by Bayesian model averaging of marginal inclusion probabilities of each regression coefficient—obtained through the inclusion of the 'spike-and-slab' priors—and are computed as the proportion of Monte Carlo draws each predictor is zero during the preintervention period^{22 24}; as described in detail in ref.²¹ This is subtly different from the way the weights for the synthetic control are generated in classical synthetic control estimation in that here these are integrated over the possible hyperparameter choices²⁵ and include time-series effects.²¹ Finally, because we have quarterly data a seasonal component is also included with a mean of zero over the four seasons. Prior distributions for the variance are set as gamma distributions with the incremental error in the state assumed to be small.

Bayesian priors were specified as the arithmetic mean of each intervention area's alcohol-related hospital admission or crime rates in the preintervention period, and the initial value as the corresponding rate in the year 2009. The variance was specified as inverse gamma distributions with a prior of 10% of preintervention SD of each outcome for each area, with the same starting values. A seasonal component of length 4 was specified with the prior SD similarly set to 10% of the SD of the preintervention outcome. Spike-and-slab priors were set to expect that each model would be informed by 10 areas (ie, 10 non-null parameters) based on an initial trial run, and initial values for all regression coefficients set to '0'. The SD of the regression coefficients was also set to 10% of the SD of the preintervention outcomes, and the prior expected explained variance was set to 85% with 25 df (based on initial trial run).

The results are presented as point estimates and Bayesian 95% credible intervals (CIs) which, in contrast to frequentist confidence intervals, describe the probability that the true value lies within the interval; given the model and the data (a good discussion can be found in ref.²⁶).

Mixing of the Markov Chain Monte Carlo (MCMC) chains was inspected visually by trace and density plots, and *Raftery-Lewis* diagnostic tests with default accuracy of 0.005 were used to evaluate mixing, correlation and inappropriate starting values (interpreting dependence factor (I)>5 as indicative of problems). *Geweke* diagnostics and *Heidelberger-Welch* tests were calculated to evaluate MCMC chain stability. Mean and range of one-step prediction errors were calculated and *Durbin-Watson* tests used to evaluate residual correlation in these.²⁷

The Bayesian framework described above was initially developed for inferring the causal effect of market interventions such as new product launches or advertising campaigns,²¹ and the R package *CausalImpact* is available to use this methodology.²⁵ Here, custom-made Bayesian structural time series were designed using the *bsts* package in R,²² which were subsequently used as inputs in the *CausalImpact* package. Posterior tail areas probabilities, or posterior predictive p values, are calculated and interpreted as the posterior mean of classical p values.²⁸

Finally, estimated impacts for each intervention area were combined in one summary metric using random-effects meta-analyses assuming symmetrical SEs (note that Bayesian 95% CIs are not necessarily symmetrical).

Sensitivity and validation analyses

Two different sets of sensitivity analyses were conducted:

1. The original analyses were repeated, but with different Bayesian priors and starting values to evaluate the sensitivity of the models to the prior specifications. Specifically, we conducted analyses with more informative priors (prior sigma set to 1% and upper limited to 100% of sample SD, and explained variance to 90%), and less informative priors (prior sigma set to 25% of sample SD, no upper limit and explained variance to 50%).
2. Based on previous research on temporal trends in (alcohol-related) reported crime rates which showed an increase in reported incidence from about 2013 onwards, and which was unlikely to have been due to changes in alcohol consumption but was likely the results of changes in reporting,⁹ analyses were restricted to a postintervention period up to the middle of the year 2013.

Validation analyses were conducted in which the same analyses as described above were conducted, but instead of one of the identified intervention areas, synthetic time series were calculated and

compared for 25 areas randomly selected from the set of control areas (where no intervention happened). A priori, the difference between the measured time series in these areas and the modelled synthetic time series should result in a summary null finding (with random variability around the null for individual areas).

RESULTS

Inspection of trace plots indicated good mixing of the MCMC, and (partial) autocorrelation plots showed minimal autocorrelation, which was confirmed by *Durbin-Watson* tests of the one-step prediction errors. Up to 150 000 MCMC samples were sufficient to yield stable posterior summaries based on *Heidelberg-Welsh*, *Geweke* and *Raftery-Lewis* diagnostic tests. Mean absolute one-step prediction errors were minimal and ranged from 1.5% to 1.9% for hospital admissions and 0.7%–to 3.7% for the crime rates (see online supplementary tables S1a-S1d).

Figure 1 shows the measured and corresponding modelled posterior Bayesian time series for alcohol-related hospital admissions in each intervention area, with the corresponding results for crime rates shown in online supplementary figures S1a-S1c. The meta-analytic summary results for all outcomes are shown in figure 2 and numerically in online supplementary tables S2a-S2d, and the summary posterior results for the full and the 2013-restricted analyses are shown in table 1. The findings indicate that the introduction of the licensing policies was associated with a subsequent reduction in alcohol-related hospital admissions in all five (local) intervention areas (effect range -11.3% to -1.4%), reductions in alcohol-related violent crimes in four of five areas (range -17.9% to $+4.9\%$), reductions in sexual crimes in all five areas (range -15.5% to -0.1%) and reductions in rates of antisocial behaviour in three of five areas (range -27.0% to $+43.7\%$). The posterior average effect of the introduction of the licensing policies resulted in an additional 6.3% reduction in alcohol-related hospital

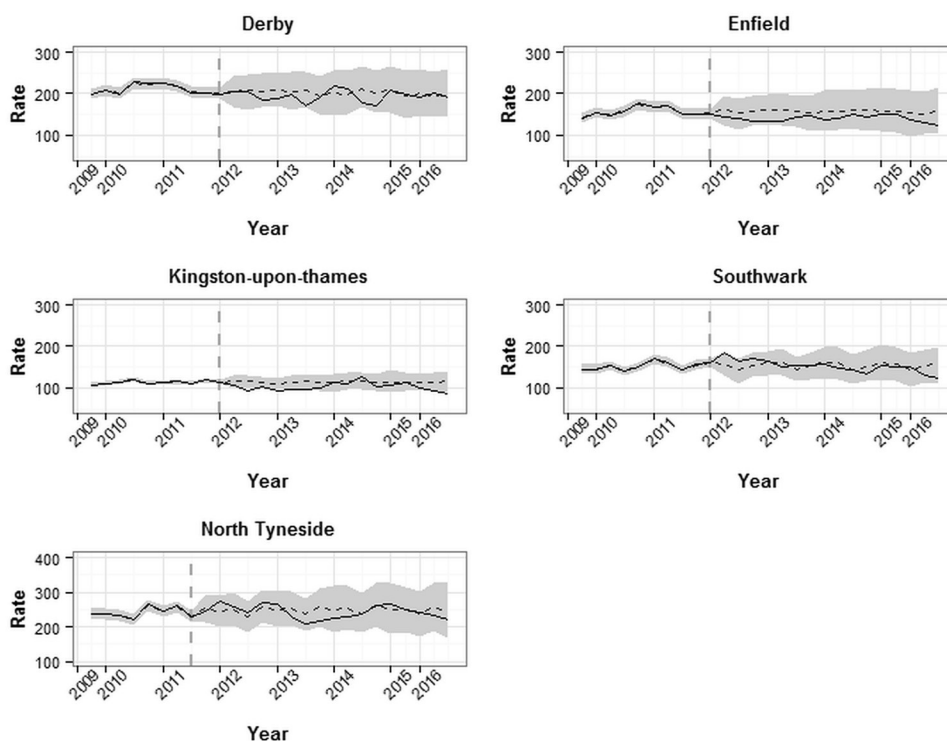


Figure 1 Measured (solid line) and modelled, synthetic (dotted line) time series and 95% credible intervals (grey areas) in the areas where the new policies were introduced; example standardised alcohol-related hospital admission rates (other outcomes in online supplementary figures S1-3).

Research report

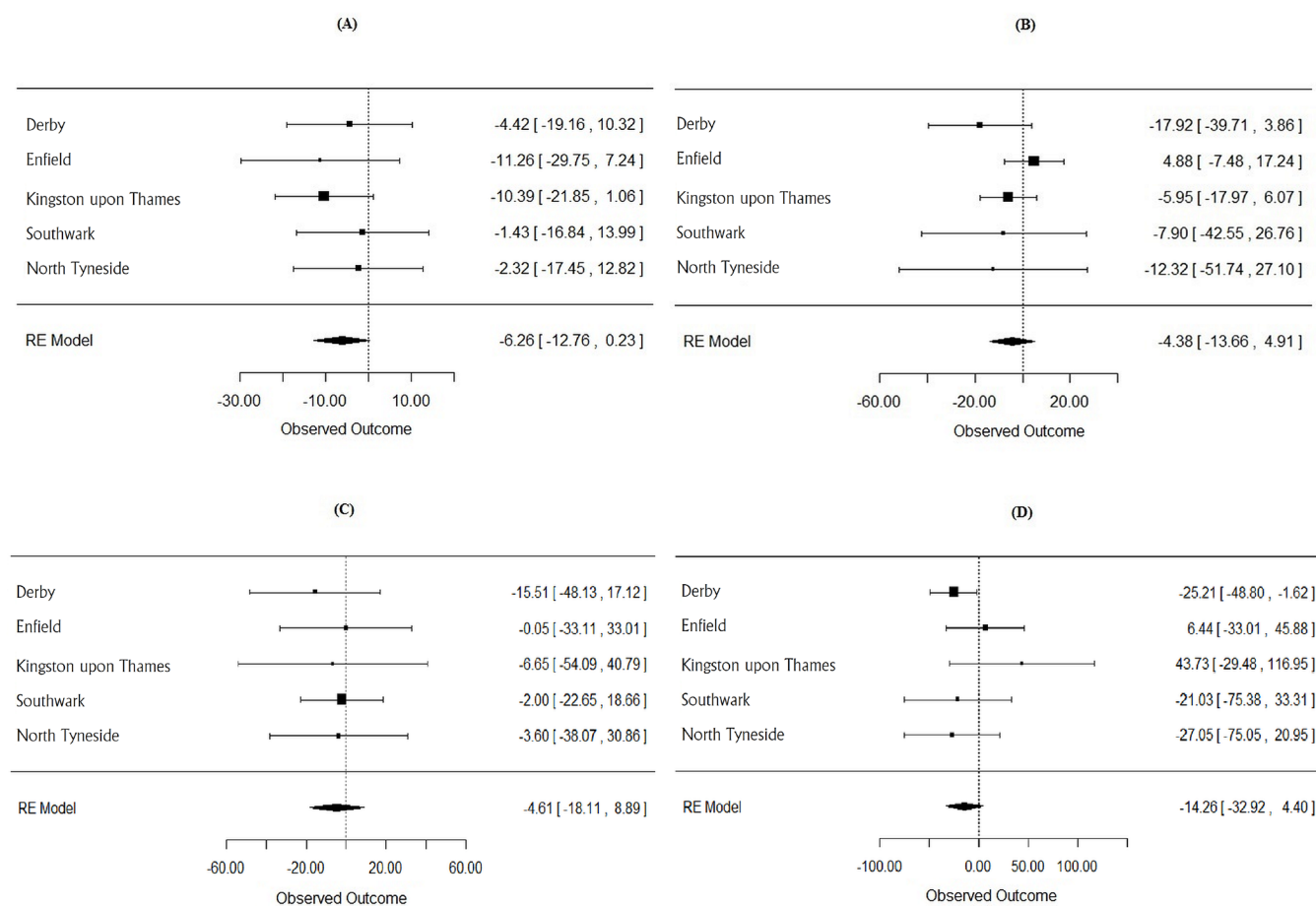


Figure 2 Overview of random-effects (RE) meta-analysis summary result of new policies for alcohol-related hospital admission (A), violent crimes (B), sexual crimes (C) and antisocial behaviour rates (D).

admissions (95% Bayesian CI -12.8% to $+0.2\%$). Comparable summary results for crime rates indicate average effect of -4.4% (95% CI -13.7% to 4.9%), -4.6% (-18.1% to 8.9%) and -14.3% (-32.9% to 4.4%) for alcohol-related violent, sexual and antisocial behaviour rates, respectively. Restricting the crime analyses to the year 2013 nearly doubles the effect of alcohol-related sexual crimes to -8.4% (-21.4% to 4.6%) and

correspondingly reduces the posterior tail-area probability from 0.50 to 0.20. Sensitivity analyses with alternative sets of priors (see online supplementary tables S3a-S3d) indicate the effect sizes are relatively insensitive to the choice of priors, but that the posterior probabilities of effect does depend on the Bayesian priors, with more informative priors resulting in smaller posterior probabilities.

Table 1 Estimated cumulative impact of introduction of Cumulative Impact Policies (CIP) and licensing restrictions on rates of four different outcome measures

Impact	Random-effects meta-analysis Summary effect (%)	Summary 95% credible interval (%)	Posterior tail-area probability
Alcohol-related hospital admissions			
2011–2015	-6.3	-12.8 to 0.2	0.06
Alcohol-related violent crimes			
2011–2015	-4.4	-13.7 to 4.9	0.36
2011–2013 only	-4.6	-10.7 to 1.4	0.13
Alcohol-related sexual crimes			
2011–2015	-4.6	-18.1 to 8.9	0.50
2011–2013 only	-8.4	-21.4 to 4.6	0.20
Antisocial behaviour			
2011–2015	-14.3	-32.9 to 4.4	0.13
2011–2013 only	-12.6	-26.4 to 1.3	0.07

Table 2 Validation analyses: expected to give null effects of cumulative impact of introduction of CIP and licensing restrictions on rates of four different outcome measures

Outcome 2011–2015 effects	Random-effects meta-analysis Summary effect (%)	Summary 95% credible interval (%)	Posterior tail-area probability
Alcohol-related hospital admissions			
2011–2015	+1.3	–1.9 to 4.4	0.43
Alcohol-related violent crimes			
2011–2015	+0.8	–4.5 to 6.0	0.77
2011–2013 only	–0.9	–5.3 to 3.4	0.67
Alcohol-related sexual crimes			
2011–2015	+11.9	4.2 to 19.7	<0.01
2011–2013 only	–0.8	–7.9 to 6.4	0.83
Antisocial behaviour			
2011–2015	–19.7	–27.3 to –12.1	<0.01
2011–2013 only	–13.5	–19.5 to –7.4	<0.01

Evaluation of which control areas contribute most to the synthetic time series, based on their weights (ie, the inclusion probabilities), is shown in online supplementary tables S4a–S4d) and indicates that the synthetic time series for different areas are created based on different sets of control areas.

The summary results of the validation analyses are shown in table 2 with the corresponding forest plots presented in online supplementary figures S2a–S2d. A priori, these analyses in which true intervention areas were replaced by control areas should result in null findings. For alcohol-related hospital admissions and violent crimes, summary posterior effects are +1.3% (95% CI –2% to 4%) and +0.8% (–5% to 6%), respectively, confirming a null finding (posterior tail-area probabilities are 0.43 and 0.77, respectively). Restricting the violent crime analyses to 2013 similarly results in a null finding with a summary effect of –0.9% (–5% to 3%; p value=0.67).

For alcohol-related sexual crimes however, the validation analysis shows a relatively large effect, in the opposite direction of the main analyses, of +12% (4% to 20%). This effect, however, disappears when the analyses are restricted to 2013 and a null finding of –0.8% (–8% to 6%) is found.

In contrast, the validation analyses for antisocial behaviour indicate a significant reduction in rates of –20% (–27% to –12%), which remains in the 2012-restricted analyses, and is similar to the effects observed in the main analysis.

DISCUSSION

The analyses show convincing evidence of a true effect of an area changing from ‘passive’ alcohol licensing intensity to ‘most intense’ with respect to alcohol-related hospital admissions, and indicating an average relative impact of –6.3% (–12.8% to 0.2%) over the 4-year period. This effect is comparable to the average additional reduction observed in local areas with more ‘intense’ policies compared with ‘passive areas’ over the same period of –5% reported previously.¹⁰ The conventional statistical evidence in our earlier study¹⁰—though strong in terms of tests against a null effect—is weakened by the study design which is at considerable risk of bias. The current natural experiment provides the opportunity to examine the evidence for causality. Similarly, these analyses indicate an average reduction in alcohol-related violent crimes of 4%–5% as a result of the policy intervention, with Bayesian CIs and posterior tail-area probabilities indicating the evidence for a true effect is less strong than for hospital

admissions. The evidence, however, is stronger when the analyses are restricted to 2013 with the effect size for this period similar to that reported previously.⁹

The problem with trends in reported crime rates, and which required the stratified analyses, is a recognised problem and most likely the result of differences in the reporting and recording of crimes and not due to an actual increase in the crimes.^{29 30} A minor effect of this is shown for alcohol-related violent crimes, but the impact is more pronounced for alcohol-related sexual crimes. Most likely, this strong effect of differences in reporting and reporting of sexual crimes, resulting a sharp post-2012 increase in rates,⁹ was the result of the Metropolitan Police’s highly publicised investigation into sex offences (Operation Yewtree).³¹ Nonetheless, an average reduction of 4.6% is observed for the 2011–2015 period, but a nearly twice as large effect is observed for analyses up to 2013 only with an effect of –8.4% (–21.4% to 4.6%) and the posterior tail-area probability reducing from 0.50 to 0.20, providing weak evidence for a direct effect. This inference is supported by the validation analyses which indicate a relatively strong increase in reported rates of 12% for the full period but, as expected, a null finding for the period up to 2013.

In contrast to previous findings,⁹ these analyses do not provide evidence for an effect of these policy interventions on antisocial behaviour. Although relatively strong effects of about –13% to 14% (depending on stratification) were observed with borderline significance, similar effects were found in the validation analyses. This indicates that the main underlying assumption of this methodology, that the relationship in the time series between the control and the intervention areas is similar in the preintervention and postintervention periods, is violated. We can hypothesise that this may be the result of a change in legislation in 2014, when in the UK the Anti-Social Behaviour, Crime and Policing Act 2014 replaced the Crime and Disorder Act 1998,³² and which will have resulted in nationwide changes in reporting.

An important limitation of this methodology, and one that to some extent obscured the results for the crime rates, is that the inferences made rely on the assumption that the relationship between the control and the intervention areas has been (1) stable in the past and (2) is expected to remain stable post intervention.

Additionally, trends need to be relatively stable to be able to estimate them accurately and allow for predictions. A dynamic regression model in which the linear relationships are allowed to change over time could have been used, but this would require more data than are currently available.

Research report

Another limitation of this study is that the level of analysis (ie, the local area) does not necessarily correspond to that of the intervention. A CIZ, for example, is generally smaller than a local area (in fact, an area can have more than one CIZ),³³ which will add non-differential misclassification bias and dilute the potential effect.

In this natural experiment, in which we could only estimate, with reasonable accuracy, the moment the actual change in policy had occurred, we still cannot exclude the possibility that the observed effects are not the result of the change in policy, but of some other—*hitherto* unknown—endogenous factor. Because the data used to generate the synthetic control were of corresponding accuracy for all areas, we believe this to be unlikely. Nonetheless, variation is likely to have been introduced by other factors, such as changes in the extent of delivery of screening and brief interventions in different areas (as is obvious from the variability in effect sizes in both the main and the validation analyses). Similarly, we cannot completely exclude some effects as a result of ‘regression to the mean’. However, the null effect observed in the validation analyses, which included areas with similar or higher baseline alcohol-related burden, are reassuring. Moreover, based on their 2009 alcohol-related hospital admission rates the intervention areas had widely different baseline rates, being ranked between 6th and 298th (of 353 principal authorities).

In the absence of randomised, controlled trials but in the presence of a reasonable control pool of local areas without a change in policy, the Bayesian structural time-series models used here enable the use of a natural experiment design and provide an important alternative analysis strategy. Compared with alternative methods such as ‘difference–indifferences’ designs^{34 35} and interrupted time series,³⁶ the current method has several advantages such as the inclusion of posterior uncertainty about which predictors to use and their coefficients,^{21 37} the inclusion of subjective data in defining the priors and the accommodation of both longitudinal and cross-sectional heterogeneity and serial autocorrelation.^{21 38} Moreover, by using Bayesian model averaging the model mitigates issues of arbitrary selection of covariates²² and overfitting as a result of use of point estimates only.²¹ An additional strength of this method is that it does not depend on the outcome being linear. Because of the use of comparative time series to construct the synthetic outcome, any confounder that affects all time series, such as national policies or austerity, will also automatically be controlled for. Moreover, in contrast to conventional regression methods, they can be used to evaluate the impact of an intervention on a single unit (ie, a local area; a street) rather than estimating average effects only. And finally, a particular strength of this method is the ability to make direct comparisons between different intervention areas to identify components of the intervention that may be associated with increased (or reduced) impact, which is of interest for future work.

In summary, the approach to a natural experiment described here marks a promising development in the rigorous evaluation of alcohol and other public health improvement interventions. While relying on a high degree of statistical expertise, it is relatively inexpensive to implement and is also particularly useful for situations in which a cluster randomised controlled trial of the required scale would be impractical.

The analysis of this natural experiment provides additional evidence that the implementation of active licensing policies, including CIZs, leads to a reduction in alcohol-related hospital admissions and violent crimes. It further provides some evidence these policies lead to a reduction in alcohol-related sexual crimes, but does not appear to lead to reductions in antisocial behaviour.

What is already known on this subject

- ▶ Excessive alcohol consumption is associated with health risks and has wider negative societal impacts such as antisocial behaviour and violence. Local differences in how best to address these result in variation in local alcohol licensing policies which could result in different impacts on crime rates. Because of the complex nature of cause and effect, there is only weak evidence of any public health improvement as a result of these policies.

What this study adds

- ▶ In this paper, a natural experiment is evaluated in which the impact of the introduction of cumulative impact zones and increased licensing enforcement on alcohol-related hospital admissions, violent and sexual crimes and antisocial behaviour is estimated. Using a novel causal inference framework based on Bayesian structural time series and synthetic controls, moderate reductions in alcohol-related hospital admissions and violent and sexual crimes were the result of the introduction of local alcohol licensing policies. There was insufficient evidence of an effect on antisocial behaviour. This novel methodology holds promise for use in other natural experiments in public health.

Twitter @frankdevocht

Acknowledgements The research was funded by the NIHR School for Public Health Research (SPHR). NIHR SPHR is a collaboration between: the Universities of Sheffield, Bristol, Cambridge, Exeter, UCL; The London School of Hygiene and Tropical Medicine; the LiLaC collaboration between the Universities of Liverpool and Lancaster and Fuse: The Centre for Translational Research in Public Health, a collaboration between Newcastle, Durham, Northumbria, Sunderland and Teesside Universities.

Contributors FdV conceived the study, conducted the statistical analyses and wrote the first draft of the abstract. FdV and MH established the protocol. All authors contributed to the interpretation of the statistical analyses, provided input into the results and were involved in subsequent iterations of the draft manuscript. All authors provided input in, and agree with, the final version.

Funding This work was funded by the NIHR School for Public Health Research (SPHR).

Disclaimer The views expressed are those of the author(s) and not necessarily those of the NHS, the NIHR or the Department of Health.

Competing interests CA reports grants from Systembolaget, the Swedish government-owned alcohol retail monopoly, outside the submitted work; the Swedish government-owned alcohol retail monopoly. FDV reports grants from Alcohol Research UK, outside the submitted work.

Ethics approval None declared.

Provenance and peer review Not commissioned; externally peer reviewed.

Data sharing statement All data are publicly available.

Open Access This is an Open Access article distributed in accordance with the Creative Commons Attribution Non Commercial (CC BY-NC 4.0) license, which permits others to distribute, remix, adapt, build upon this work non-commercially, and license their derivative works on different terms, provided the original work is properly cited and the use is non-commercial. See: <http://creativecommons.org/licenses/by-nc/4.0/>

© Article author(s) (or their employer(s) unless otherwise stated in the text of the article) 2017. All rights reserved. No commercial use is permitted unless otherwise expressly granted.

REFERENCES

- 1 Babor T, Caetano R, Casswell S, *et al.* *Alcohol: no ordinary commodity*. New York: Oxford University Press, 2010.
- 2 Room R, Babor T, Rehm J. Alcohol and public health. *Lancet* 2005;365:519–30.
- 3 Her Majesty's Stationary Office. *Licensing Act*. England and Wales 2003 <http://www.legislation.gov.uk/ukpga/2003/17/contents> (accessed 15 Dec 2016).
- 4 Office H. Amended guidance issued under section 182 of the Licensing Act 2003. *London* 2012 https://www.gov.uk/government/uploads/system/uploads/attachment_data/file/98101/guidance-section-182-licensing.pdf (accessed 15 Dec 2016).
- 5 Egan M, Brennan A, Buykx P, *et al.* Local policies to tackle a national problem: comparative qualitative case studies of an english local authority alcohol availability intervention. *Health Place* 2016;41:11–18.
- 6 Robinson M, Shipton D, Walsh D, *et al.* Regional alcohol consumption and alcohol-related mortality in Great Britain: novel insights using retail sales data. *BMC Public Health* 2015;15:1.
- 7 Nicholls J. Public Health and Alcohol Licensing in the UK: challenges, Opportunities, and implications for policy and practice. *Contemp Drug Probl* 2015;42:87–105.
- 8 Foster J. *The Licensing Act (2003): its uses and abuses 10 years on: 241*. London: Institute of Alcohol Studies, 2016.
- 9 de Vocht F, Heron J, Campbell R, *et al.* Testing the impact of local alcohol licensing policies on reported crime rates in England. *J Epidemiol Community Health* 2016;0:1–9.
- 10 de Vocht F, Heron J, Angus C, *et al.* Measurable effects of local alcohol licensing policies on population health in England. *J Epidemiol Community Health* 2016;70:231–7.
- 11 Holmes J, Meier PS, Booth A, *et al.* The temporal relationship between per capita alcohol consumption and harm: a systematic review of time lag specifications in aggregate time series analyses. *Drug Alcohol Depend* 2012;123:7–14.
- 12 England PH. PHE). *Local Alcohol Profiles for England* 2016 <http://www.lape.org.uk/data.html> (accessed 15 Dec 2016).
- 13 Office for National Statistics (ONS). *Crime in England and Wales, Year Ending 2015;2015* <https://www.ons.gov.uk/peoplepopulationandcommunity/crimeandjustice/bulletins/crimeinenglandandwales/2015-07-16>.
- 14 England PH. *User Guide: local Alcohol Profiles for England 2014*. London: Public Health England, 2014. http://www.lape.org.uk/downloads/LAPE%20User%20Guide_Final.pdf. (accessed 15 Dec 2016).
- 15 Perkins C, Hennessey M. Understanding alcohol-related hospital admissions. England PH, ed. Public health matters, 2014. Available from: <https://publichealthmatters.blog.gov.uk/2014/01/15/understanding-alcohol-related-hospital-admissions/>. (accessed 15 Dec 2016).
- 16 ONS. Population and migration. 2016 <https://www.ons.gov.uk/peoplepopulationandcommunity/populationandmigration> (accessed 15 Oct 2016).
- 17 Office H. Alcohol and late night refreshment licensing England and Wales statistics. 2014 <https://www.gov.uk/government/collections/alcohol-and-late-night-refreshment-licensing-england-and-wales-statistics> (accessed 31 Oct 2016).
- 18 Pearl J. Counterfactuals in Functional Models. Pearl J, ed. *Causality models, reasoning, and inference*. New York: Cambridge University Press. 464, 2009.
- 19 Abadie A, Diamond A, Hainmueller J. Synthetic control methods for comparative case studies: estimating the effect of California's Tobacco Control Program. *J Am Stat Assoc* 2010;105:493–505.
- 20 Abadie A, Gardeazabal J. The Economic costs of Conflict: a Case Study of the basque country. *Am Econ Rev* 2003;93:113–32.
- 21 Brodersen KH, Gallusser F, Koehler J, *et al.* Inferring causal impact using bayesian structural time-series models. *Ann Appl Stat* 2015;9:247–74.
- 22 Scott SL, Varian HR. Predicting the present with bayesian structural time series. *Int J Math Model Num Opt* 2014;5:4–23.
- 23 Korobilis D. Bayesian forecasting with highly correlated predictors. *Econ Lett* 2013;118:148–50.
- 24 George J, McCulloch RE. Approaches for bayesian variable selection. *Statist Sinica* 1997;7:339–74.
- 25 Brodersen KH. CausalImpact. *An R package for causal inference using bayesian structural time-series models*: Google Inc, 2015.
- 26 Kruschke JK, Liddell TM. The Bayesian New Statistics: Hypothesis testing, estimation, meta-analysis, and power analysis from a Bayesian perspective. *Psychon Bull Rev* 2017 (Epub ahead of print: 7 Feb 2017).
- 27 Cowles MK, Carlin BP. Markov Chain Monte Carlo Convergence Diagnostics: a comparative review. *J Am Stat Assoc* 1996;91:883–904.
- 28 Meng X-L. Posterior Predictive p -Values. *The Annals of Statistics* 1994;22:1142–60.
- 29 UK Statistics Authority. *Assessment of compliance with the Code of Practice for Official Statistics on crime in England and Wales*. London, 2014. Assessment Report 268. <https://www.statisticsauthority.gov.uk/archive/assessment/assessment/assessment-reports/assessment-report-268-statistics-on-crime-in-england-and-wales.pdf>. (accessed 31 Oct 2016).
- 30 Office for National Statistics (ONS). 1.2 changes resulting from the National Statistician's review. *User Guide to Crime Statistics for England and Wales*. London, 2016. <http://www.ons.gov.uk/ons/guide-method/method-quality/specific/crime-statistics-methodology/user-guide-to-crime-statistics.pdf>. (accessed 31 Oct 2016).
- 31 Office for National Statistics (ONS). Chapter 1 - Overview of violent crime and Sexual Offences 2012/13. *Crime Statistics, Focus on Violent Crime and Sexual Offences, 2013/14 Release*. London: Office for National Statistics, 2015. <http://webarchive.nationalarchives.gov.uk/20160105160709/http://ons.gov.uk/ons/rel/crime-stats/crime-statistics/focus-on-violent-crime-and-sexual-offences-2012-13/index.html>. (accessed 31 Oct 2016).
- 32 Anti-social Behaviour NA. Crime and Policing Act 2014 UK. 2014 <http://www.legislation.gov.uk/ukpga/2014/12/contents>.
- 33 Egan M, Brennan A, Buykx P, *et al.* Local policies to tackle a national problem: comparative qualitative case studies of an english local authority alcohol availability intervention. *Health Place* 2016;41:11–18.
- 34 Card C, Krueger AB, Wages M. And Employment: a Case Study of the Fast-Food industry in New Jersey and Pennsylvania. *The American Economic Review* 1994;84:772–93.
- 35 Rossow I, Norström T. The use of epidemiology in alcohol research. *Addiction* 2013;108:20–5.
- 36 Penfold RB, Zhang F. Use of interrupted time series analysis in evaluating health care quality improvements. *Acad Pediatr* 2013;13:S38–44.
- 37 Bertrand M, Duflo E, Mullainathan S, *et al.* *How much should we trust differences-in-differences estimates?* Cambridge, MA: National Bureau of Economic Research, 2002.
- 38 Leeflang PSH, Bijmolt THA, van Doorn J, *et al.* Creating lift versus building the base: current trends in marketing dynamics. *Int J Res Market* 2009;26:13–20.



The intervention effect of local alcohol licensing policies on hospital admission and crime: a natural experiment using a novel Bayesian synthetic time-series method

Frank de Vocht, Kate Tilling, Triantafyllos Pliakas, Colin Angus, Matt Egan, Alan Brennan, Rona Campbell and Matthew Hickman

J Epidemiol Community Health published online July 5, 2017

Updated information and services can be found at:

<http://jech.bmj.com/content/early/2017/07/05/jech-2017-208931>

These include:

References

This article cites 20 articles, 1 of which you can access for free at:
<http://jech.bmj.com/content/early/2017/07/05/jech-2017-208931#BIBL>

Open Access

This is an Open Access article distributed in accordance with the Creative Commons Attribution Non Commercial (CC BY-NC 4.0) license, which permits others to distribute, remix, adapt, build upon this work non-commercially, and license their derivative works on different terms, provided the original work is properly cited and the use is non-commercial. See: <http://creativecommons.org/licenses/by-nc/4.0/>

Email alerting service

Receive free email alerts when new articles cite this article. Sign up in the box at the top right corner of the online article.

Topic Collections

Articles on similar topics can be found in the following collections

[Open access](#) (293)

Notes

To request permissions go to:

<http://group.bmj.com/group/rights-licensing/permissions>

To order reprints go to:

<http://journals.bmj.com/cgi/reprintform>

To subscribe to BMJ go to:

<http://group.bmj.com/subscribe/>