



Deposited via The University of Leeds.

White Rose Research Online URL for this paper:

<https://eprints.whiterose.ac.uk/id/eprint/117933/>

Version: Accepted Version

Article:

Huang, Z, Liu, Q, Westland, S et al. (2018) Light dominates colour preference when correlated colour temperature differs. *Lighting Research & Technology*, 50 (7). pp. 995-1012. ISSN: 1477-1535

<https://doi.org/10.1177/1477153517713542>

© 2017, The Chartered Institution of Building Services Engineers. This is an author produced version of a paper published in *Lighting Research & Technology*. Reprinted by permission of SAGE Publications.

Reuse

Items deposited in White Rose Research Online are protected by copyright, with all rights reserved unless indicated otherwise. They may be downloaded and/or printed for private study, or other acts as permitted by national copyright laws. The publisher or other rights holders may allow further reproduction and re-use of the full text version. This is indicated by the licence information on the White Rose Research Online record for the item.

Takedown

If you consider content in White Rose Research Online to be in breach of UK law, please notify us by emailing eprints@whiterose.ac.uk including the URL of the record and the reason for the withdrawal request.

Light dominates colour preference when correlated colour temperature differs

Zheng Huang BSc^a, Qiang Liu PhD^{a, b, c}, Stephen Westland PhD^b, Michael R. Pointer PhD^b, M. Ronnier Luo PhD^d and Kaida Xiao PhD^b

^a School of Printing and Packaging, Wuhan University, Wuhan, China

^b School of Design, University of Leeds, Leeds, United Kingdom

^c Shen Zhen Research Institute, Wuhan University, Shenzhen, China

^d State Key Laboratory of Modern Optical Instrumentation, Zhejiang University, Hangzhou, China

1. Abstract

Colour preference of lighting is generally influenced by three kinds of contextual factors, which are the features of light, object and observer. In this study, a series of psychophysical experiments were conducted to investigate and compare the effect of certain factors on colour preference, including spectral power distribution of light, lighting application, observers' personal colour preference, regional cultural difference and gender difference. Certain LED lights with different correlated colour temperatures were used to illuminate a wide selection of objects. Participant response was quantified by a 7-point rating method or a 5-level ranking method. It was found that the preferred illumination for different objects exhibited a similar trend and the influence of light was significantly stronger than that of other factors. Therefore, we conclude that the light itself (rather than, for example, the objects that are viewed) is the most crucial factor for predicting which light, among several candidates with different CCTs, an observer will prefer. In addition, some of the gamut-based colour quality metrics correlated well with the participants' response, which corroborates the viewpoint that colour preference is strongly influenced by colour saturation. Moreover, the familiarity of the object affects the ratings for each experiment while the colour of the objects also influences colour preference.

2. Introduction

The Colour Rendering Index R_a (CRI)¹ has been used as the standard criterion for assessing the light quality during the past half century. Nowadays, particularly as a consequence of developments in lighting technology, the defects of this metric have been exposed, especially for the LED sources²⁻⁵. Researchers are beginning to agree that a full description of light quality actually includes many different aspects, such as fidelity^{1, 6}, preference^{7, 8}, naturalness^{2, 9}, vividness^{3, 10, 11}, harmony¹² and discrimination^{13, 14}. Therefore, describing the quality of a light source with only one metric is not sufficient¹⁵⁻¹⁸. To solve this problem, numerous efforts have been made^{2-5, 10-14, 19, 20}. The Commission

Address for correspondence: Qiang Liu, School of printing and packaging, Wuhan University, Luoyu Road 129, Wuhan, China.
E-mail: liuqiang@whu.edu.cn

Internationale de l'Eclairage (CIE) has also set up two Technical Committees (TC1-90 and TC1-91), with the aim of comprehensively investigating the measures on different subjective aspects of lighting quality ¹⁹.

Among the above mentioned aspects, colour preference is widely acknowledged as a very important dimension, since for general lighting conditions end users may pay much attention to the visual appreciation of the illuminated scenes. Colour preference has been reported to be impacted by several contextual factors which include the lighting application ^{19, 21}, regional cultural difference ²²⁻²⁴, illuminance level ^{25, 26} and age difference ²⁷. Such research has contributed to the development of light quality evaluation, but has also highlighted new problems. That is, many factors are now considered to be important when choosing an appropriate light source. In many cases, such a task is not simple even for experts, let alone for naïve users. Therefore, for general applications, a simple and universal approach is actually needed, which could achieve a reasonable balance among those contextual factors and thus help end users to make the right decision.

In addition, it is also gradually accepted that it is difficult to characterize the colour preference with only one colour quality measure ¹⁹. Several researchers have indeed suggested that more complicated and comprehensive approaches (such as multi-measure methods and graphical methods ^{6, 28-31}) should be adopted. Such approaches would definitely improve the performance for predicting colour preference, since they provide much more useful information than a single measure. However, they are too complicated and too overwhelming for most end users in general applications. Therefore, to set up a better single measure for colour preference and eventually help end users to choose a suitable light, the influence of different contextual factors on colour preference should also be considered.

Psychophysical experiments are primarily used to investigate such topics. However, it must be acknowledged that it is impossible for researchers to design and conduct a psychophysical experiment which includes every contextual factors ²⁸ and there are indeed certain obvious limitations in the current literature as discussed below.

Firstly, most contributions on colour preference only discussed the colour quality of light sources with almost the same correlated colour temperature (CCT) ^{2, 5, 10, 11, 19, 21-23, 28, 32}. Such a design may unpremeditatedly help to reveal the influence of other contextual factors on colour preference, since it relatively weakens the impact of light when compared to the conditions where CCT differs. However, unlike colour fidelity, colour preference should not be restricted by a reference light source, since in many cases people actually want to choose a favorite light irrespective of the CCT ^{4, 26, 33-37}.

Secondly, the experimental object is also an important concern. The quantity and type of experimental objects varied considerably between different reported studies. Some researchers invited the participants to perceive a single type of object under different lights, such as fruit and vegetables ^{2, 9}, skin tones ³⁸, artworks ^{25, 33}, printed images ³⁶, cosmetic products ¹⁰, or consumer goods ^{4, 11}. Meanwhile, in other contributions, groups of mixed objects were used ^{3, 28, 34}. In 2015, Lin *et al.* pointed out that the colour preference was significantly influenced by lighting application ¹⁹. However, other than the works from Lin ³⁹, Wei ³² and Islam ²³, there is limited research involving a wide range of experimental objects to study the impact of object characteristics on colour preference.

In this study, therefore, a series of psychophysical experiments were designed to address the above mentioned shortcomings. Certain spectral power distributions (five or nine SPDs) were generated with uniformly sampled CCT values ranging from 2500K to 6500K using LED lights. A broad range of objects were adopted in psychophysical experiments, which included four groups of fruit and vegetables with different colours, five Chinese traditional calligraphies with different background colours, four pieces of artwork with different colour features and one bunch of artificial multicolour flowers (In a recent study of Royer *et al*, such kinds of objects were found to be very crucial when observers evaluated the lighting conditions ²⁸). Groups of observers with different personal colour preference, or from different native places in China, were also involved in order to study the influence of the corresponding human factors on colour preference. The aim of this work was to systematically investigate and compare the influence of the above contextual factors on colour preference. To our knowledge, no past studies have been conducted in this manner, especially with such a wide range of experimental objects and under the condition where correlated colour temperature differs.

3. Method

3.1 Experimental setup

In this study, most of the experiments were implemented in a light booth apart from where a wall-painting experiment was carried out in a museum, as shown in Figure 1. For the light booth experiments, a booth (width 89 cm × depth 60 cm × height 51 cm) was located in a room without ambient light. The inner surfaces of the booth were coated with matt medium gray paint (Munsell N5) and the wall surfaces of the room were also painted with spectrally neutral paint. A commercially available and colour-tunable light source (Philips Hue) was installed in the inner top surface of the booth. The light source was mechanically and thermally stable which was demonstrated by a preliminary experiment.

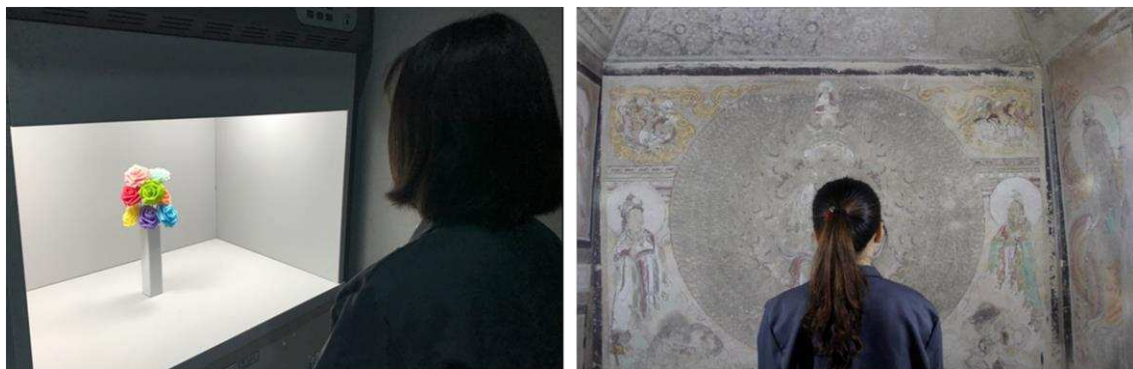


Figure 1 The experimental scenes. **Left:** light booth, **Right:** museum (in a simulated cave)

A chair was set in front the light booth at a distance of approximately 40 cm. The height of the chair was adjustable so that when the participants observed the objects, they could not see the luminaire in the booth.

Nine SPDs (as shown in Figure 2) were generated by the light source for the experiments. A calibrated spectroradiometer (Photo Research PR 705) together with a white standard were used to obtain the

SPDs of the lights, as well as the spectral reflectance factors of the objects.

An illuminance meter (Testo 540) was used to measure the illuminance. In this study, the illuminance in the centre of the objects for the experiments carried out in the light booth was exclusively set at 200 lx. Note that the illuminance spatial distribution of some experiments was not perfectly uniform, with a non-uniformity of 20%-30%. This problem could be solved by adding a diffuser in front of the luminaire. However, a diffuser was not used so as to mimic everyday lighting conditions.

Table 1 summarizes the colorimetric property of the nine SPDs generated by the light source. The scores of typical colour quality metrics for those SPDs were calculated for the Color Rendering Index (CRI) ¹, Gamut Area Index (GAI) ⁴⁰, Full Spectrum Colour Index (FSCI) ⁴¹, Colour Quality Scale (CQS: Q_a , Q_f , Q_p , Q_g) ⁶, Feeling of Contrast Index (FCI) ⁴², Colour Discrimination Index (CDI) ⁴³, Cone Surface Area (CSA) ⁴⁴, Thornton's Color Preference Index (CPI) ⁴⁵, Luo's CAM02UCS-CRI ⁴⁶, Smet's CRI2012 ⁴⁷, Memory Colour Rendering Index (MCRI) ⁴⁸ and IES TM-30 metrics (Rf and Rg) ⁴⁹. Note that in some scenarios only five of the values of CCT (2500K, 3500K, 4500K, 5500K and 6500K) were used.

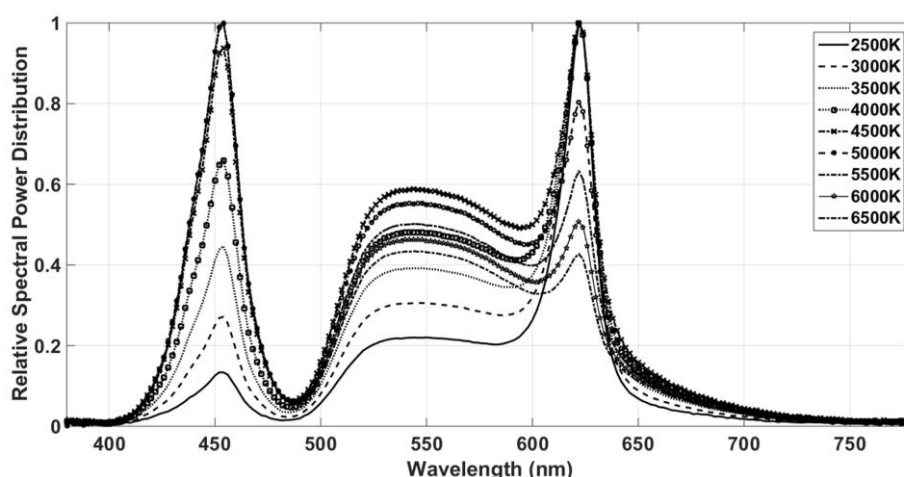


Figure 2 Relative spectral power distributions of the experimental light sources generated by the phosphor converted RGB light bulbs equipped with 5 lime green LEDs, 2 blue LEDs as well as 4 red LEDs.

It can be seen from Table 1 that the chromaticities of the nine SPDs were all below the blackbody locus (the Duv values are all negative). According to a recent study, such chromaticities are generally preferred by observers because they are more likely to have higher scores for relative gamut while maintaining high scores for fidelity ⁷.

The wall painting experiment which took place in a museum (Wan Lin Museum of Wuhan University, China) used a different experimental geometry. The same chair was set in front of the centre of the wall painting. The height of the chair was adjusted in order to keep the participants' eyes within the same horizontal level as the centre of the painting. Two of the same luminaires were used to illuminate the wall painting from either side of the observer at an angle of 45° to the plane of the painting. Since the vertical distance between participant and wall painting (127 cm) was less than that between light

sources and wall painting (176 cm), the participants could not see the luminaires when observing the painting. In this experiment, the same five SPDs (2500K, 3500K, 4500K, 5500K and 6500K) were used but the centre illuminance of the wall painting was set to 50 lx, which was the maximum recommended illuminance level in the real caves of Dunhuang.

Table 1 The colorimetric properties of the experimental SPDs and their scores of typical colour quality metrics.

ID	2500K	3000K	3500K	4000K	4500K	5000K	5500K	6000K	6500K
Measured	2445K	2932K	3451K	3817K	4471K	4767K	5538K	6102K	6637K
X	0.478	0.437	0.405	0.385	0.360	0.351	0.332	0.321	0.313
Y	0.408	0.397	0.383	0.371	0.354	0.347	0.331	0.321	0.313
Duv	-0.003	-0.004	-0.005	-0.006	-0.007	-0.007	-0.007	-0.007	-0.008
CRI	91	92	89	87	84	83	81	79	79
GAI	50	67	78	85	91	93	96	97	97
FSCI	28	45	57	63	67	68	70	70	70
Q _a (v9.0.3)	87	87	85	83	80	78	76	74	73
Q _f (v9.0.3)	82	82	81	80	78	76	73	71	70
Q _p (v7.4)	96	95	92	90	87	85	83	82	81
Q _g (v9.0.3)	113	110	107	105	103	101	101	99	98
FCI(CAM02)	107	105	102	100	94	92	87	83	81
CDI	73	97	114	123	133	135	139	141	142
CSA	0.034	0.042	0.048	0.052	0.056	0.058	0.060	0.061	0.062
CPI	142	143	139	136	131	129	126	124	123
CAM02UCS	85	85	84	83	80	79	75	74	73
CRI2012	83	84	84	83	82	81	78	77	77
MCRI	89	90	90	90	89	88	87	86	85
R _f	81	82	81	79	77	75	74	72	72
R _g	110	108	106	104	102	102	101	100	99

3.2 Experimental design

To comprehensively investigate the influence of different contextual factors on colour preference, a wide range of objects were selected for the psychophysical experiments, as shown in Figure 3. The spectral reflectances of some of the objects are shown in Figure 4.

As summarized in Table 2, the objects were divided into five groups for the experiment. In each group, the order of objects and light sources was randomized and counterbalanced between observers. In order to test the intra-observer variability for each participant, a randomly selected light source was always used twice in the scale rating trials, without informing the observers.

Most of the observers only participated in one experimental trial. All the observers passed the Ishihara test and thus had normal colour vision. None of them was aware of the research purpose before the experiment. In addition, during the experiment the experimenter reminded the observers to focus on the overall appearance of the lighting scene, rather than the colour of the light.

Two psychophysical methods, a 7-point scale rating and a 5-level rank ordering, were adopted for quantifying the observers' responses (the reason for adopting two psychophysical experiment methods was to test whether different methods would lead to significantly different results in form of the preference rank order for each light).

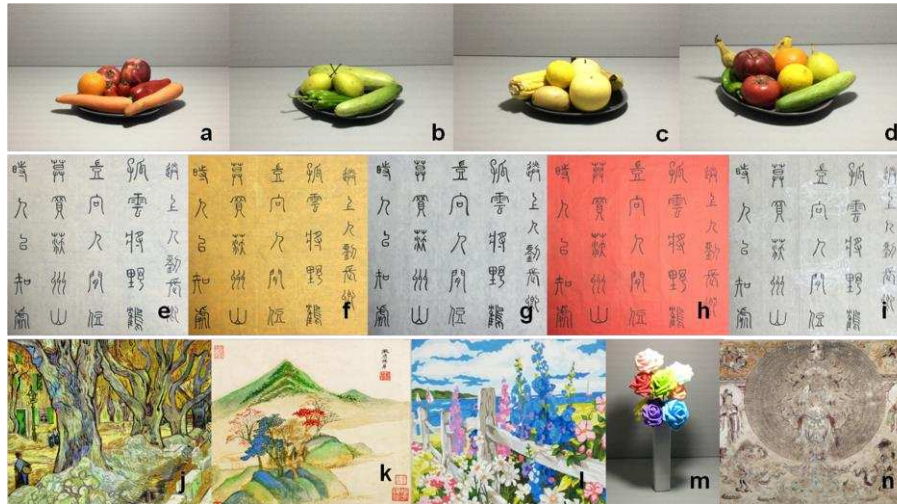


Figure 3 (Colour online) Different objects adopted in the psychophysical experiments. **a-d**: fruit and vegetables of different colors, **e-f**: Chinese calligraphies with different paper colours (40 cm×40 cm), **j**: fine art reproduction of Van Gogh's *sycamore tree* (38 cm×29 cm), **k**: fine art reproduction of Chinese traditional painting *landscape* by Qichang Dong (27 cm×27 cm), **l**: modern oil painting painted by an anonymous student in our school in China (50 cm×40 cm), **m**: a bunch of multicolour artificial flowers, **n**: fine art reproduction of Dunhuang mural painting (330 cm×200 cm)

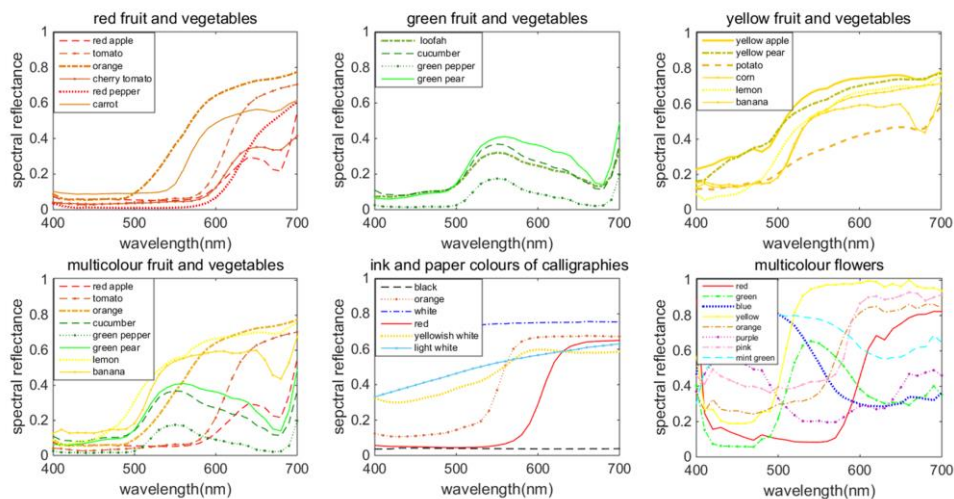


Figure 4 (Colour online) The spectral reflectances of fruit and vegetables, calligraphies (ink and paper colours) and multicolour flowers

According to the scale rating method, the participant could rate the lighting condition using seven values (-3, -2, -1, 0, 1, 2, 3), which respectively represented *strongly dislike*, *moderately dislike*, *slightly dislike*, *neutral*, *slightly like*, *moderately like* and *strongly like*. As for the rank ordering

approach, observers would rank the five lighting conditions according to their individual preference (5 for relatively *most like* and 1 for relatively *least like*).

The details of the 5 experimental groups are summarized in Table 2. Therefore, in the following two paragraphs only the unique features of certain experiments are described.

Table 2 Details of the psychophysical experiment of each group

Group	Light	Observers	Place	Score	Time
Fruit and vegetables	Five SPDs 2500K-6500K 1000K interval	45 observers 28 male 17 female Age: 19.4±0.9 year different personal colour preference	Light booth	7 point scale rating	20min
Chinese calligraphies	Five SPDs 2500K-6500K 1000K interval	40 observers 20 male 20 female Age: 19.4±0.8 year	Light booth	7 point scale rating	25min
Van Gogh and Chinese traditional painting	Five SPDs 2500K-6500K 1000K interval	60 observers 30 male 30 female Age: 22.0±1.6 year	Light booth	5 level rank ordering	25min
Multicolour flowers and modern oil painting	Nine SPDs 2500K-6500K 500K interval	36 observers 17 male 19 female Age: 19.7±1.1 year different native places of China	Light booth	7 point scale rating	25 min
Mural painting	Five SPDs 2500K-6500K 1000K interval	20 observers 14 male 6 female Age: 25.1±1.8 year	Museum	7 point scale rating	12min

The fruit and vegetables scenario was designed for investigating the influence of personal colour preference on colour preference. Before the experiment, typical observers with different personal colour preference were collected by a questionnaire survey. In the questionnaire, the subjects were asked to rate their preference for abstract colours (red, green and blue, written in words with no real colors shown in the sheet) using the same 7-point rating method mentioned as above. 323 college students were invited to participate in the survey and an ideal observer should only prefer one colour (e.g. with a score no lower than 2) and dislike other colours (e.g. with a score no higher than 0). Among the finally selected 45 observers, 15 exclusively preferred blue, 15 exclusively preferred red and 15 exclusively preferred green. The fruit and vegetables experiment was finished in two days, so as to prevent deterioration of the fruit and vegetables. In the experiment, the relative positions of each fruit and vegetable were fixed.

The Van Gogh and Chinese traditional painting scenario was for exploring the influence of regional cultural heritage on colour preference. Similarly to the fruit and vegetables experiment, the observers were also collected by a prior questionnaire. This led to three groups of observers in this trial, each group of 20 students and they respectively came from eastern provinces (Jiangsu & Zhejiang), western provinces (Xinjiang & Xizang) and middle provinces (Hubei & Hunan) of China. According to current research, people from different parts of China actually show different cultural characteristics ⁵⁰

3.3 Experimental procedure

Upon arrival, the participant was asked to put on a gray coat so as to avoid any reflectance from their clothes during the experiment. After that, the Ishihara test was implemented. The experimenter then asked the qualified participant to sign an informed consent form and complete a general information survey.

The experimenter described the experiment to the participant and escorted him/her to the preset chair. After the observer adjusting the height of the chair, the room lighting was switched off so the light from the experimental light source was the only illumination during the trial.

For the scale rating process, the observer was given 15 seconds to adapt to the welcome lighting condition which was randomly selected from the experimental light sources. Before the formal experiment, a training phase was provided to the participant with the welcome light and the first object to be evaluated. As suggested by Zhai *et al.* ²⁵, during the experiment the questions were read out by the experimenter and the participant also responded orally. Such a procedure was to avoid incomplete chromatic adaption when writing answers on white paper.

After the training phase, the formal experiment began. The participant was asked to close his/her eyes and then the experimenter changed the light. (This procedure took about 15 seconds and was repeated every time the light was changed. Its aim was to eliminate any influence of the prior lighting condition caused by a short-term memory effect.) After that, the participant was asked to open their eyes and observe the object for about 10 seconds. The experimenter then asked the participant to assess the light quality basing on their personal preference, with the seven values (-3, -2, -1, 0, 1, 2, 3) as mentioned above. Once the participant had assessed the lighting condition and validated the answer, the experimenter changed the light and this procedure was repeated for every arrangement of the objects in each group. During the experiment, the participant was allowed to take as much time as necessary.

The procedure for the 5-level rank-ordering experiments was slightly different. The five experimental lighting conditions were shown twice for each participant, in the same randomized order. The participant was asked to make the decision in his/her mind after the first round, while in the second round to rate the preference order when seeing the light (5 for relatively *most like* and 1 for relatively *least like*). The participant was allowed more rounds in the case where s/he could not respond in two rounds. However, in fact all the observers in the experiment successfully gave their answers within two rounds.

4. Results and Discussion

Table 3 summarizes the overall results from this study. Note that for the modern oil painting and the

multicolour flowers scenarios, the trend of the rating scores under the five SPDs condition (2500K, 3500K, 4500K, 5500K and 6500K) was quite similar to that under the nine SPDs (2500K, 3000K, 3500K....6500K), therefore only the rating values of the five SPDs are shown here.

As can be seen from Table 3, the ratings of the SPDs for the different objects showed a consistent tendency. That is, for the 2500K SPD the average values of the observer rating were always low, while for the 4500K SPD the values were mostly high.

Table 3 The average value (Avg) and standard deviation (SD) of observer rating for different objects under different CCTs, together with the Pearson coefficient r between the Avg and SD of each scenario

Object	Stat	2500K	3500K	4500K	5500K	6500K	r
Red fruit and vegetables	Avg	-0.33	0.47	1.04	1.02	0.59	-0.86
	SD	1.96	1.32	1.15	1.35	1.68	
Green fruit and vegetables	Avg	-1.61	-0.12	1.24	1.04	0.92	-0.96
	SD	1.58	1.42	1.23	1.15	1.27	
Yellow fruit and vegetables	Avg	-1.35	0.29	1.20	1.27	0.82	-0.85
	SD	1.73	1.38	1.14	1.43	1.38	
Multicolour fruit and vegetables	Avg	-0.96	0.78	1.31	1.29	0.71	-0.88
	SD	1.89	1.25	1.06	1.14	1.67	
Calligraphy (orange)	Avg	-0.43	0.48	0.25	0.25	0.28	-0.67
	SD	1.93	1.52	1.08	1.10	1.43	
Calligraphy (red)	Avg	-0.25	0.10	0.63	0.40	0.25	-0.86
	SD	1.92	1.30	1.13	1.43	1.32	
Calligraphy (white)	Avg	-0.68	0.88	0.43	0.43	-0.10	-0.70
	SD	1.65	1.44	1.20	1.34	1.50	
Calligraphy (light white)	Avg	-0.25	0.75	0.73	0.28	0.03	-0.75
	SD	1.71	1.51	1.34	1.36	1.66	
Calligraphy (yellowish white)	Avg	-0.65	0.83	0.83	1.13	0.58	-0.95
	SD	1.78	1.30	1.17	1.04	1.47	
Van Gogh painting*	Avg	2.40	3.47	3.98	3.18	1.97	-0.63
	SD	1.49	1.22	1.04	1.13	1.21	
Chinese traditional painting*	Avg	1.75	3.43	4.07	3.45	2.32	-0.31
	SD	1.10	1.23	0.92	1.19	1.17	
Multicolour flowers	Avg	-1.33	0.36	0.64	0.72	0.08	-0.80
	SD	1.77	1.46	1.17	1.49	1.59	
Modern oil painting	Avg	-0.92	0.92	1.19	1.08	0.89	-0.79
	SD	2.03	1.30	1.04	1.44	1.79	
Mural painting	Avg	-0.45	0.85	0.65	0.35	0.20	-0.78
	SD	2.21	1.57	1.04	1.31	1.82	

* For Van Gogh and Chinese traditional painting scenario, the Avg value represents the averaged rank order for each CCTs (5 for relatively mostly like and 1 for relatively least like).

Another interesting finding is the negative correlation r between the average value and standard deviation of each trial. Such a result is consistent with previous studies^{23,51}, which indicates that when

observers generally prefer certain lighting conditions, the distribution of their ratings will be concentrated, while if they generally dislike certain lighting conditions, the distribution will tend to be scattered.

The above mentioned conclusion also holds in the Van Gogh and Chinese traditional painting groups, which indicates that the order ranking approach tends to have similar results with scale rating in form of the preference rank order for each light. Meanwhile, the reason for adopting the scale rating method in this study lies in its possibility of predicting the acceptance limit as well as its inter-observer variability for each scenario. Such an advantage enabled the authors to straightforwardly investigate the influence of different object characteristics on colour preference. Besides, although the paired comparison approach is commonly believed to be easier for participants, current work ⁴ has also reported that such two methods have similar results.

It is worth mentioning that some researchers recommended transforming the observer ratings into z-scores before further analysis ⁹. In this study, we analyzed the data with and without z-score method and the results were quite similar. Therefore, the results of data analysis without z-score implementation were ultimately shown, since such form of data was more straightforward for assessing the observers' preference.

4.1 Inter-observer and intra-observer variability

The inter-observer variability in each experimental trial was quantified by the standard deviations of the observers' ratings, as shown in Table 3. Considering the consistency among each trial as well as the results of related works ^{23, 25, 28}, such statistics seems to be reasonable.

As mentioned above, the intra-observer variability of this research (for the scale rating experiments) was assessed by asking the participants to observe a randomly selected lighting condition twice without informing them of this. A similar approach was adopted by Jost-Boissard *et al.* ². As stated in such work, when the observers carried out the same experiment twice, the results would not necessarily be the same, because there were many factors which could impact their decision. Therefore, in this work we quantified the intra-observer variability by the absolute difference between the two ratings and set the threshold to a value of 2. That is, if the absolute difference of the two ratings was larger than 2 (for instance -1 for the first time while 2 for the second time), such ratings would be considered as abnormal data. After calculating the ratio of abnormal data for all the scale rating experiments and comparing the results with Jost-Boissard's work ², we concluded that the intra-observer variability of each experiment was acceptable, with a range of 6%-17%. In addition, we strongly agreed with Jost-Boissard's opinion that the intra-observer variability should be mainly ascribed to the inherent difficulties of the experiment, rather than the attitude of the observers, provided that the experiments were carried out with caution ². And we also found that removing the abnormal data would not significantly change the final results. Therefore, we retained all the data for further analysis.

4.2 Impact analysis of different factors on colour preference

The effect of different contextual factors on colour preference was investigated using a repeated measures Analysis of Variance (rm-ANOVA). Table 4-7 respectively summarizes the results for

different experimental groups. Note that the interactions among 3 and 4 independent variables were omitted, since none of them were statistically significant.

As can be seen from Table 4, the impact of light SPD on colour preference is significantly stronger than other factors, as well as their interactions. Meanwhile, the influence of personal color preference is quite limited. Although we actually find something interesting in this topic, it is safe to conclude that the impact of personal colour preference is negligible when compared to that of light SPD. To our knowledge, no past study has discussed the relationship between personal colour preference and colour preference of lighting: the detailed analysis of such topic will be reported in another paper.

Table 4 Significance of the effect of the independent variables (SPD, object, gender and personal colour preference) on the dependent variable (preference rating) for the fruit and vegetables group

Independent variable or interaction	SS	df	MS	F	Sig
SPD	442.31	3.09	142.75	59.45	<0.001
Object	12.37	3	4.12	1.51	0.213
Personal colour preference	4.83	3	1.61	0.59	0.622
Gender	5.55	1	5.55	2.03	0.155
SPD × Object	45.24	9.29	4.86	2.02	0.033
SPD × Personal colour preference	79.99	9.29	8.60	3.58	<0.001
SPD × Gender	33.28	3.09	10.74	4.47	0.004
Object × Personal colour preference	13.24	9	1.47	0.54	0.844
Gender × Object	2.30	3	0.76	0.28	0.839
Gender × Personal colour preference	12.64	2	6.32	2.31	0.102

Table 5 describes the result for the calligraphies experiments. The reason for designing such a group was that the colour feature of such artwork is completely different from that of paintings. In 2013, Palmer *et al* defined such a form of colour preference as *figural preference* (that is, how much the foreground color is liked when viewed against a coloured background), and they argued that such a preference was closely related to lightness and hue contrast between the foreground and background colours⁵². However, as shown in Table 5, when compared to the impact of light SPD, the impact of lightness and hue contrast (demonstrated by the interaction between SPD and Object) was also negligible.

Table 5 Significance of the effect of the independent variables (SPD, object and gender) on the dependent variable (preference rating) for the calligraphies group

Independent variable or interaction	SS	df	MS	F	Sig
SPD	154.80	3.03	50.95	21.14	<0.001
Object	18.49	4	4.62	1.47	0.212
Gender	0.62	1	0.62	0.51	0.656
SPD × Object	45.09	12.15	3.70	1.53	0.105
SPD × Gender	24.37	3.03	8.01	3.32	0.019
Gender × Object	14.89	4	3.72	1.18	0.318

The Van Gogh and Chinese traditional painting group was planned to explore the influence of regional cultural difference on colour preference. A prior study by Bodrogi *et al.* has reported that the impact of cultural difference was stronger than that of other contextual factors, including light SPD, object and gender⁸. However, contrary results are shown in Table 6, which still highlights the impact of light. As far as we are concerned, there are two likely explanations for this condition. First, in Bodrogi's work the observers were respectively from China and Germany, while our participants were only from different regions of China, so there is no doubt that the cultural difference in Bodrogi's work is much stronger. Second (and maybe more important), although Bodrogi's work also used several SPDs with different CCTs, their SPDs actually had certain special features. That is, the lights in their study were deliberately generated and the corresponding colour quality metrics (such as CRI, GAI and CQS) for those lights were almost the same. It is very likely that such an experimental design actually weakened the impact of the lights.

Table 6 Significance of the effect of the independent variables (SPD, object, gender and regional cultural difference) on the dependent variable (preference rating) for the Van Gogh and Chinese traditional painting group

Independent variable or interaction	SS	df	MS	F	Sig
SPD	354.86	2.52	140.78	50.84	<0.001
Object	0.007	1	0.01	0.14	0.7
Gender	0.16	1	0.16	3.71	0.056
Regional cultural difference	0.14	2	0.07	1.59	0.207
SPD × Object	18.19	2.52	7.21	2.60	0.062
SPD × Gender	13.5	2.52	5.35	1.93	0.135
SPD × Regional cultural difference	21.37	5.04	4.24	1.53	0.180
Gender × Object	0.01	1	0.01	0.14	0.7
Object × Regional cultural difference	0.06	2	0.03	0.70	0.496
Gender × Regional cultural difference	0.14	2	0.07	1.59	0.207

Table 7 Significance of the effect of the independent variables (SPD, object and gender) on the dependent variable (preference rating) for multicolour flowers and modern oil painting group.

Independent variable or interaction	SS	df	MS	F	Sig
SPD	204.48	2.51	81.57	21.38	<0.001
Object	26.66	1	26.66	12.56	0.001
Gender	3.66	1	3.66	1.72	0.193
SPD × Object	1.84	2.51	0.73	0.19	0.870
SPD × Gender	17.04	2.51	6.78	1.78	0.162
Gender × Object	1.15	1	1.15	0.54	0.463

The purpose of the multicolour flowers and modern oil painting group was to further test the influence of lighting application on colour preference. As shown in Table 7, although the SPD is still the key factor for colour preference, the impact of the object is significantly stronger when compared to former experiments. One possible explanation for this finding is that the extent of the object difference in this group (flowers and paintings) was much more profound compared to previous groups (same type of

objects).

In conclusion, the rm-ANOVA implementations for the above mentioned groups uniformly illustrate that light always plays a dominant role for human colour preference, at least under our experimental condition. Besides, we can also conclude that the divergence of the contextual factors is also crucial for the results of such a study.

4.3 Correlation analysis

Figure 5 visualizes the performance of current colour quality metrics on predicting colour preference. It is worth noting that most of those metrics were not deliberately proposed for assessing colour preference. However, the correlation analysis between such metrics and colour preference are quite common in current literature^{2, 3, 5, 9-11}, since a proper metric for colour preference is actually needed. Note that it is not the intent of this paper to discuss the intricate details of these metrics, thus only the main findings which related to this topic are presented.

As shown in Figure 5, the GAI, FSCI, CDI and CSA metrics show relatively sound performance while the performance of other metrics was poor. A possible explanation for this condition is that the four metrics are all absolute measures which are independent of a reference light source (or with a constant reference) while most of the other metrics are reference dependent. In this case, we would like to conclude that unlike lighting fidelity which should be correlated with certain reference light source, colour preference is to some extent an absolute issue and thus should be quantified by some absolute measures.

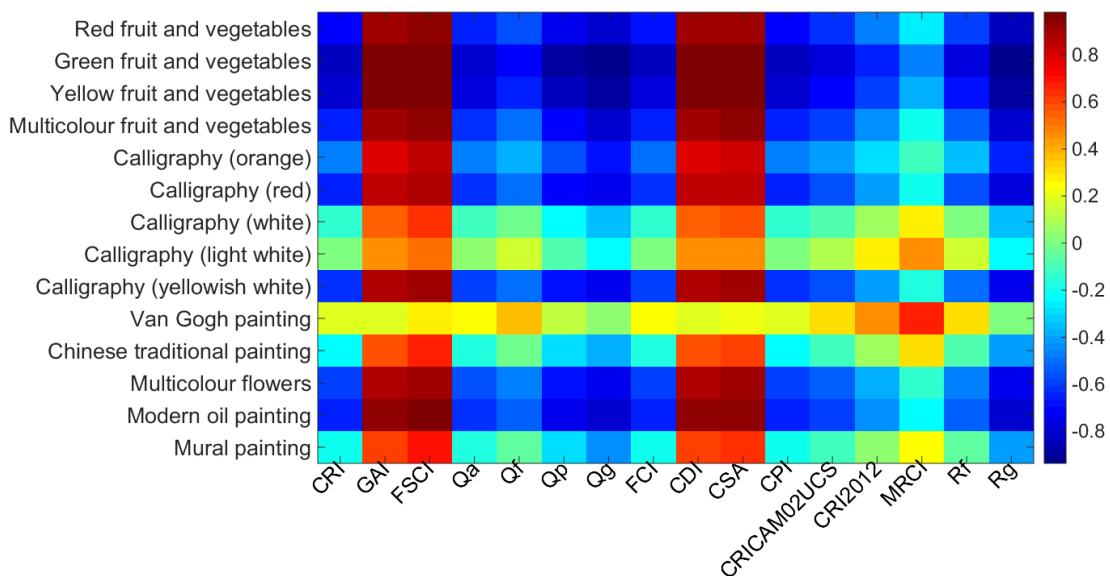


Figure 5 (Colour online) Pearson correlation coefficients between metrics prediction and visual scaling of colour preference of each object. The value of the correlation coefficients are denoted by colour, for instance, red for very high correlation while blue for very low correlation

Another possible explanation for the results in Figure 5 is that colour preference is correlated with saturation^{22, 32, 37} while the increased gamut area is always related to saturation (or chroma)

enhancement^{6, 9, 21, 23, 53}. Maybe that is why in some related works^{2, 11, 23} the GAI was reported to be a good predictor for colour preference (the CDI and CSA are also gamut based metrics, but were less discussed in past studies).

Meanwhile, it is obvious that the two relative gamut-based measures (Qg and Rg) performed poorly in predicting colour preference, which proves reversely the necessity of an absolute gamut-based measure for this multi-CCT condition. Note however, that not all the absolute gamut-based indices perform well according to our data, such as FCI (constant reference D65). A possible reason is that different gamut-based indexes adopt different colour samples for calculating the gamut area. If the colours sample were not reasonably selected, maybe the correlation between the subjective preference rating and the metric predictions would be masked^{48, 54}.

4.4 Other findings

Figure 6 illustrates another two findings of this work. The left graph shows the impact of observer familiarity on preference ratings. As can be seen from this graph, the rating interval for the familiar objects is obviously larger than that of unfamiliar objects. It seems that people always have a precise idea about the colours of the objects which they are familiar with, therefore, it is easier for them to respond with an explicit answer (e.g. *strongly dislike* or *strongly like*). On the contrary, since they are not familiar with certain other objects, an inexplicit answer (e.g. *moderately dislike* or *moderately like*) is more likely to be provided. Meanwhile, it needs to be mentioned that the modern oil painting and yellowish white calligraphy were classified as familiar objects in this graph. For the modern oil painting, we believed that its colours together with the scene it depicted were much more familiar than those of the other paintings. While for the yellowish white calligraphy, such a yellowish white is actually the most popular colour for traditional Chinese rice paper. Such paper is the best seller in the store where we brought it and it also has a sound name “retro paper”.

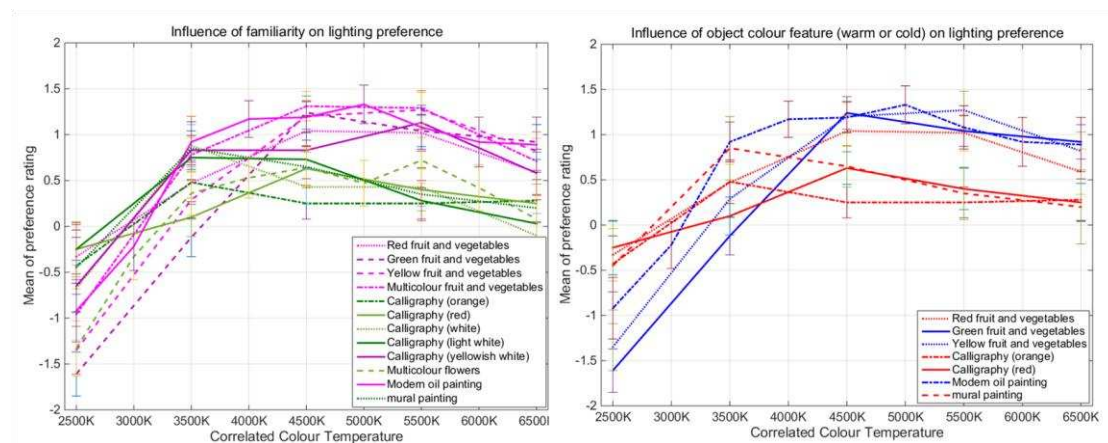


Figure 6 (Colour online) **Left:** Influence of observer familiarity (purple and magenta for familiar objects while dark green and light green for unfamiliar objects) on colour preference. **Right:** influence of object colour (red for warm colours and blue for cold colours) on colour preference. Errorbar: standard error of mean

The right graph of Figure 6 depicts the influence of object colour features on colour preference. As

shown in this picture, people always prefer a warm light for warm colours (see the 2500K condition) while prefer cool light for cool or cold colours (see the 6500K condition). In related works of Liu ²² and Lasauskaite ⁵⁵, similar results were also obtained. Note that since there was no object with real cold colours in our experiment, we could only consider the green fruit and vegetables, yellow fruit and vegetables and modern oil paintings as relatively cool colour objects.

In summary, Figure 6 illustrates that the observer familiarity and object colour actually has a certain impact on colour preference. Meanwhile, from the similar trend of preference rating for different objects, we may conclude again that light is still the dominate factor for colour preference.

5. General discussion and conclusion

The above discussion has profoundly demonstrated the dominant influence of light on colour preference, at least under the multi-CCT condition (condition where correlated colour temperature differs). In fact, in the current literature even in metameric lighting conditions (SPDs with almost the same CCT), similar results were also reported ^{2, 9, 32}. Just as Jost-Boissard stated, *the subjects' judgment about lighting did not seem to depend a lot on the colour of the target. This suggests that it is possible for a give type of light to give a good rendering for all the different colours, and that separate lighting is not needed for each target colour.* ²

The reason for the dominant influence of light on colour preference should be attributed to gamut area. As mentioned above, people always prefer the light which could enhance colour gamut and thus make the objects more saturated ^{6, 9, 21-23, 32, 37}. Besides, several past studies have also stated that the GAI performed well in either multi-CCT or metameric lighting conditions ^{2, 4, 5, 10, 11, 23}.

There are however, other contributions which raise contrary views. Just as the work of Bodrogi *et al.* ⁸, since they intently generated the light SPDs with similar colour quality metrics (including GAI), the influence of light on colour preference turned out to be weak. Another counter example is the work of Lasauskaite *et al* ⁵⁵. In this work, the colour preference of interior materials was discussed. Since such unfamiliar objects differed greatly in their structure, texture, colour features as well as optical properties, the experimental object became the key factor for colour preference, rather than light. Therefore, it is not safe to arbitrarily conclude that light dominates colour preference under any condition. When the divergence of other contextual factors greatly enhances, the influence of light will relatively weaken.

Meanwhile, it is also worth mentioning that according to a recent study of Wei *et al.*, light sources with similar measures of relative gamut but different gamut shapes would also influence colour preference ²¹. Such work actually points out the limitation of the gamut-based metrics, but maybe it is not applicable to this work, since we are discussing the colour preference for multi-CCT conditions (To our knowledge, no past studies have investigated the influence of gamut shape on colour preference for the multi-CCT conditions).

Figure 7 illustrates the gamut shape of the 9 experimental light sources using the IES method. It is clear that the gamut shape of these lights are quite similar, which obviously belies their huge difference in predicting colour preference. Therefore, it is very likely that such theory on gamut shape ^{21, 28} may only

validated in a metameric lighting domain. If two light sources have different CCTs, they will correlate to different reference lights and thus their gamut shapes are incomparable. Just as the case of this study, the dot-line circles in Figure 7 actually refer to different reference sources (It is also a good explanation for the failure of the reference based measures, as mentioned above). Furthermore, as for such multi-CCT cases, except for the condition that one light source has a large gamut but extremely abnormal gamut shape, maybe the influence of gamut size is still greater than that of gamut shape. This topic should be explored in further studies.

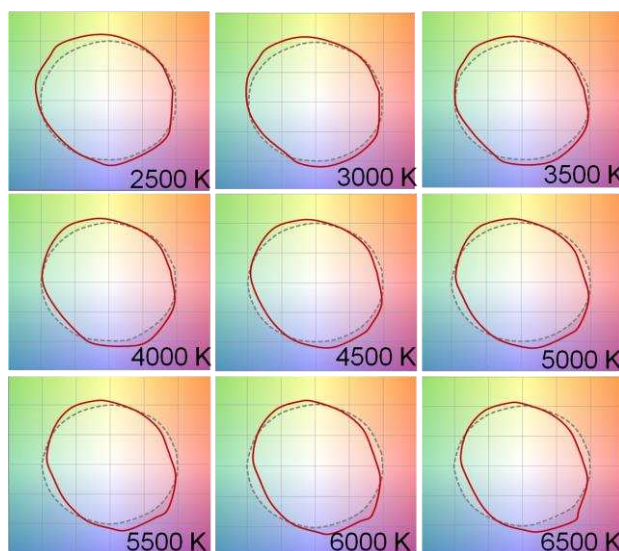


Figure 7 (Colour online) Gamut shape comparison based on IES method ⁴⁹.

In light of the above, we would like to firstly state the prerequisites so as to make a safe conclusion. The aim of this study was to investigate and compare the influence of several contextual factors on colour preference, especially for general lighting conditions when correlated colour temperature differs. In such conditions, the gamut sizes of different SPDs may likely be different. As for the issue of gamut shape, the authors agree that it is actually a very important concern, but as mentioned above, it may be only valid for metameric light conditions. Furthermore, we suppose that it should be the manufacturer's responsibility to provide a product with reasonable gamut shape according to the relevant theory. For naïve users and general applications, we believe that light dominates colour preference when CCT differs.

To sum up, in this contribution the impacts of different contextual factors on colour preference for multi-CCT condition were systemically investigated, with a wide range of experimental objects. It is found that the familiarity to the object, as well as the colour of the objects to some extent impacts colour preference. Meanwhile, our most important conclusion lies in the dominate influence of light on colour preference. We therefore recommend that for daily use, ordinary consumers should mainly be concerned about the property of light--An absolute gamut-based metric seems to be a good indicator for this issue, which is much better than the reference based metrics.

The experimental data of this research are available upon request.

Declaration of conflicting interests

The authors declared no potential conflicts of interest with respect to the research, authorship, and/or publication of this article.

Funding

The authors would like to acknowledge the financial support of National Natural Science Foundation of China (Project No. 61505149), the Open Fund of the State Key Laboratory of Pulp and Paper Engineering of China (Project No 201528), as well as Young Talent Project of Wuhan City of China (Project No 2016070204010111).

References

1. Nickerson D and Jerome CW. Color rendering of light sources: CIE method of specification and its application. *Illuminating Engineering* 1965; 60: 262.
2. Jost-Boissard S, Fontoynt M and Blanc-Gonnet J. Perceived lighting quality of LED sources for the presentation of fruit and vegetables. *Journal of Modern Optics* 2009; 56: 1420-1432.
3. Khanh T, Bodrogi P, Vinh Q, et al. Colour preference, naturalness, vividness and colour quality metrics, Part 1: Experiments in a room. *Lighting Research & Technology* 2015: 1477153516643359.
4. Narendran N and Deng L. Color rendering properties of LED light sources. In: *International Symposium on Optical Science and Technology* 2002, pp.61-67. International Society for Optics and Photonics.
5. Smet K, Ryckaert WR, Pointer MR, et al. Correlation between color quality metric predictions and visual appreciation of light sources. *Optics Express* 2011; 19: 8151-8166.
6. Davis W and Ohno Y. Color quality scale. *Optical Engineering* 2010; 49: 033602-033602-033616.
7. Wei M and Houser KW. What is the cause of apparent preference for sources with chromaticity below the blackbody locus? *LEUKOS* 2016; 12: 95-99.
8. Bodrogi P, Lin Y, Xiao X, et al. Intercultural observer preference for perceived illumination chromaticity for different coloured object scenes. *Lighting Research and Technology* 2015: 1477153515616435.
9. Jost-Boissard S, Avouac P and Fontoynt M. Assessing the colour quality of LED sources: Naturalness, attractiveness, colourfulness and colour difference. *Lighting Research & Technology* 2014; 47.
10. Khanh T and Bodrogi P. Colour preference, naturalness, vividness and colour quality metrics, Part 3: Experiments with makeup products and analysis of the complete warm white dataset. *Lighting Research and Technology* 2016: 1477153516669558.
11. Khanh T, Bodrogi P, Vinh Q, et al. Colour preference, naturalness, vividness and colour quality metrics, Part 2: Experiments in a viewing booth and analysis of the combined dataset. *Lighting Research and Technology* 2016: 1477153516643570.
12. Szabó F, Bodrogi P and Schanda J. A colour harmony rendering index based on predictions of colour harmony impression. *Lighting Research and Technology* 2009; 41: 165-182.
13. Jiang L, Jin P and Lei P. Color discrimination metric based on cone cell sensitivity. *Optics express* 2015; 23: A741-A751.

14. Pardo PJ, Suero MI, Pérez ÁL, et al. Optimization of the correlated color temperature of a light source for a better color discrimination. *JOSA A* 2014; 31: A121-A124.
15. Rea MS and Freyssinier - Nova JP. Color rendering: A tale of two metrics. *Color Research & Application* 2008; 33: 192-202.
16. Rea MS and Freyssinier J. Color rendering: Beyond pride and prejudice. *Color Research & Application* 2010; 35: 401-409.
17. Guo X and Houser KW. A review of colour rendering indices and their application to commercial light sources. *Lighting Research & Technology* 2004; 36: 183-197.
18. Houser KW, Wei M, David A, et al. Review of measures for light-source color rendition and considerations for a two-measure system for characterizing color rendition. *Optics Express* 2013; 21: 10393-10411.
19. Lin Y, Wei M, Smet K, et al. Colour preference varies with lighting application. *Lighting Research and Technology* 2015: 1477153515611458.
20. Smet K, Ryckaert WR, Pointer MR, et al. Optimal colour quality of LED clusters based on memory colours. *Optics express* 2011; 19: 6903-6912.
21. Wei M, Houser K, David A, et al. Colour gamut size and shape influence colour preference. *Lighting Research & Technology* 2016: 1477153516651472.
22. Liu A, Tuzikas A, Zukauskas A, et al. Cultural preferences to color quality of illumination of different artwork objects revealed by a color rendition engine. *Photonics Journal, IEEE* 2013; 5: 6801010-6801010.
23. Islam M, Dangol R, Hyvärinen M, et al. User preferences for LED lighting in terms of light spectrum. *Lighting Research and Technology* 2013; 45: 641-665.
24. Smet KA and Hanselaer P. Impact of cross-regional differences on color rendition evaluation of white light sources. *Optics express* 2015; 23: 30216-30226.
25. Zhai Q, Luo M and Liu X. The impact of illuminance and colour temperature on viewing fine art paintings under LED lighting. *Lighting Research and Technology* 2014: 1477153514541832.
26. Kakitsuba N. Comfortable indoor lighting conditions evaluated from psychological and physiological responses. *LEUKOS* 2016; 12: 163-172.
27. O'Connor DA and Davis RG. Lighting for the elderly: The effects of light source spectrum and illuminance on color discrimination and preference. *Leukos* 2005; 2: 123-132.
28. Royer M, Wilkerson A, Wei M, et al. Human perceptions of colour rendition vary with average fidelity, average gamut, and gamut shape. *Lighting Research & Technology* 2016: 1477153516663615.
29. Windisch R, Heidel G, Binder U, et al. Impact of spectral features of common LED lighting systems on TM-30 color indices. *Optics Express* 2017; 25: 1824-1830.
30. Society IE. TM-30-15 IES method for evaluating light source color rendition. Illuminating Engineering Society New York (NY), 2015.
31. Quintero JM, Sudrià A, Hunt CE, et al. Color rendering map: a graphical metric for assessment of illumination. *Optics express* 2012; 20: 4939-4956.
32. Wei M, Houser KW, Allen GR, et al. Color Preference under LEDs with Diminished Yellow Emission. *LEUKOS* 2014; 10: 119-131.
33. Nascimento SMC and Masuda O. Best lighting for visual appreciation of artistic paintings—experiments with real paintings and real illumination. *JOSA* 2014.
34. Dikel EE, Burns GJ, Veitch JA, et al. Preferred chromaticity of color-tunable LED lighting. *Leukos* 2014; 10: 101-115.

35. Park B-C, Chang J-H, Kim Y-S, et al. A study on the subjective response for corrected colour temperature conditions in a specific space. *Indoor and Built Environment* 2010; 19: 623-637.
36. Wang Q, Xu H, Zhang F, et al. Influence of color temperature on comfort and preference for LED indoor lighting. *Optik-International Journal for Light and Electron Optics* 2017; 129: 21-29.
37. Szabó F, Kéri R, Schanda J, et al. A study of preferred colour rendering of light sources: Home lighting. *Lighting Research & Technology* 2016; 48: 103-125.
38. Quellman EM and Boyce PR. The light source color preferences of people of different skin tones. *Journal of the Illuminating Engineering Society* 2002; 31: 109-118.
39. Lin Y, He J, Tsukitani A, et al. Colour quality evaluation of natural objects based on the Feeling of Contrast Index. *Lighting Research & Technology* 2016; 48: 323-339.
40. Freyssinier JP and Rea M. A two-metric proposal to specify the color-rendering properties of light sources for retail lighting. In: *SPIE Optical Engineering+ Applications* 2010, pp.77840V-77840V-77846. International Society for Optics and Photonics.
41. Rea M, Deng L and Wolsey R. NLPPI Lighting Answers: Light Sources and Color. Troy, NY: Rensselaer Polytechnic Institute 2004.
42. Hashimoto K, Yano T, Shimizu M, et al. New method for specifying color - rendering properties of light sources based on feeling of contrast. *Color Research & Application* 2007; 32: 361-371.
43. Thornton WA. Color-discrimination index. *JOSA* 1972; 62: 191-194.
44. Fotios S. *The perception of light sources of different colour properties*. 1997.
45. Thornton W. A validation of the color-preference index. *Journal of the Illuminating Engineering Society* 1974; 4: 48-52.
46. Luo MR. The quality of light sources. *Coloration Technology* 2011; 127: 75-87.
47. Smet KA, Schanda J, Whitehead L, et al. CRI2012: A proposal for updating the CIE colour rendering index. *Lighting Research & Technology* 2013; 45: 689-709.
48. Smet KAG, Ryckaert WR, Pointer MR, et al. Memory colours and colour quality evaluation of conventional and solid-state lamps. *Optics Express* 2010; 18: 26229-26244. DOI: 10.1364/oe.18.026229.
49. David A, Fini PT, Houser KW, et al. Development of the IES method for evaluating the color rendition of light sources. *Optics Express* 2015; 23: 15888-15906.
50. Xiao L. Hofstede cultural measure about China's eastern and western cultural differences. *Economic Research Guide* 2008: 177-178.
51. Islam M, Dangol R, Hyvärinen M, et al. User acceptance studies for LED office lighting: lamp spectrum, spatial brightness and illuminance level. *Lighting Research and Technology* 2013: 1477153513514425.
52. Palmer SE, Schloss KB and Sammartino J. Visual aesthetics and human preference. *Annual review of psychology* 2013; 64: 77-107.
53. Quintero JM, Hunt CE and Carreras J. De-entangling colorfulness and fidelity for a complete statistical description of color quality. *Optics letters* 2012; 37: 4997-4999.
54. Royer MP and Wei M. The Role of Presented Objects in Deriving Color Preference Criteria from Psychophysical Studies. *LEUKOS* 2017: 1-15.
55. Lasauskaite Schüpbach R, Reisinger M and Schrader B. Influence of lighting conditions on the appearance of typical interior materials. *Color Research & Application* 2015; 40: 50-61.