

This is a repository copy of *Technical note::Differences in the diurnal pattern of soil respiration under adjacent Miscanthus ×giganteus and barley crops reveal potential flaws in accepted sampling strategies.*

White Rose Research Online URL for this paper:

<https://eprints.whiterose.ac.uk/117567/>

Version: Published Version

Article:

Keane, James Benjamin orcid.org/0000-0001-7614-8018 and Ineson, Philip orcid.org/0000-0002-5194-0022 (2017) *Technical note::Differences in the diurnal pattern of soil respiration under adjacent Miscanthus ×giganteus and barley crops reveal potential flaws in accepted sampling strategies.* Biogeosciences. pp. 1181-1187. ISSN 1726-4189

<https://doi.org/10.5194/bg-14-1181-2017>

Reuse

This article is distributed under the terms of the Creative Commons Attribution (CC BY) licence. This licence allows you to distribute, remix, tweak, and build upon the work, even commercially, as long as you credit the authors for the original work. More information and the full terms of the licence here:

<https://creativecommons.org/licenses/>

Takedown

If you consider content in White Rose Research Online to be in breach of UK law, please notify us by emailing eprints@whiterose.ac.uk including the URL of the record and the reason for the withdrawal request.



Technical note: Differences in the diurnal pattern of soil respiration under adjacent *Miscanthus × giganteus* and barley crops reveal potential flaws in accepted sampling strategies

J. Ben Keane¹ and Phil Ineson²

¹Environment Department, University of York, Wentworth Way, Heslington, YO10 5DD, UK

²Department of Biology, University of York, Wentworth Way, Heslington, YO10 5DD, UK

Correspondence to: J. Ben Keane (ben.keane@york.ac.uk)

Received: 17 September 2016 – Discussion started: 27 October 2016

Revised: 21 January 2017 – Accepted: 23 January 2017 – Published: 13 March 2017

Abstract. For convenience, measurements used to compare soil respiration (R_s) from different land uses, crops or management practices are often made between 09:00 and 16:00 UTC, convenience which is justified by an implicit assumption that R_s is largely controlled by temperature. Three months of continuous data presented here show distinctly different diurnal patterns of R_s between barley (*Hordeum vulgare*) and *Miscanthus × giganteus* (*Miscanthus*) grown on adjacent fields. Maximum R_s in barley occurred during the afternoon and correlated with soil temperature, whereas in *Miscanthus* after an initial early evening decline, R_s increased above the daily average during the night and in July maximum daily rates of R_s were seen at 22:00 and was significantly correlated with earlier levels of solar radiation, probably due to delays in translocation of recent photosynthate. Since the time of the daily mean R_s in *Miscanthus* occurred when R_s in the barley was 40 % greater than the daily mean, it is vital to select appropriate times to measure R_s especially if only single daily measurements are to be made.

The implications that changes in R_s might have for climate change have long been discussed (Schlesinger and Andrews, 2000) and in recent years the attention given to the potential of soils to sequester large amounts of carbon to mitigate rising levels of atmospheric CO₂ through management practices (e.g. Gattinger et al., 2012) demands that we measure all aspects of the global carbon cycle, including R_s , as accurately as possible.

The most common method used to measure R_s is the closed chamber technique (Mosier, 1989) with manual chambers tending to be employed for sampling from a weekly to monthly basis (e.g. Drewer et al., 2012; Toma et al., 2011; von Arnold et al., 2005). R_s is generally accepted to be largely controlled by soil temperature (Bond-Lamberty and Thomson, 2010) and if combined with an assumption that soil temperature will be consistent across a single site, a logical expectation might be that the diurnal variation in R_s will also be consistent at that site. Many studies consider it sufficient to use a single simultaneous daily measurement of R_s to test for differences between different land uses or vegetation types and to extrapolate long-term budgets (e.g. Barrena et al., 2013; Finocchiaro et al., 2014; Gauder et al., 2012; Johnson et al., 2010; Shvaleva et al., 2014; von Arnold et al., 2005; Zhang et al., 2013). Whilst the importance of selecting appropriate and synchronous sampling times is commonly recognized, measurement “windows” often vary across 2 h (Kessavalou et al., 1998; Zhang et al., 2013) to as much as seven7 h (Finocchiaro et al., 2014) or even 8 h (Gao et al., 2014), generally between 09:00 and 16:00; however, none of these cited studies provided any data to support these win-

1 Introduction

Soil respiration (R_s) is a major process in the global carbon (C) cycle, contributing approximately 30 % of ecosystem respiration (Bond-Lamberty and Thomson, 2010). Though the controls on R_s are less well described than for photosynthesis, as atmospheric carbon dioxide (CO₂) concentrations pass 400 ppm it is becoming increasingly important to improve our understanding of this important biological process.

dows which are largely based on minimizing time delays between comparisons and assumptions that minimized temperature changes are the key to measurement parity. Although work has been undertaken to ascertain the most suitable time of day to sample R_s manually (e.g. Wang et al., 2012; Savage and Davidson, 2003), these studies have focused on a single vegetation type or land use, thus do not resolve the issue of selecting the most appropriate sampling time at which to make comparisons between different experimental treatments or crops.

In the current work the aim was to compare the R_s fluxes between two adjacent crops, as part of a fuller quantification of ecosystem C budgets. The two crops monitored in this study were the conventional arable crop barley (*Hordeum vulgare*), the second most widely planted arable crop in the UK (DEFRA, 2014), and the perennial grass species *Miscanthus* \times *giganteus* (henceforth *Miscanthus*), which is increasingly cultivated as an energy crop. In this study the use of automated chambers allowed the collection of near-continuous measurements of R_s and the resulting data set was used to investigate the effect of sampling time and crop on R_s , and how this might differ across a period of several months.

2 Methods and materials

2.1 Study site and experimental design

Soil respiration (R_s) was measured using automated chambers and infrared gas analysers (IRGA, LI-COR LI-8100-101A, Lincoln, NE, USA) with multiplexers (electronic workshops, Department of Biology, University of York, York UK) beneath a 7-year-old stand of *Miscanthus* and an April-sown spring barley in adjacent fields on a farm in the east of the United Kingdom, with one IRGA and one multiplexer deployed in each crop (see Drewer et al., 2012, for a full site description). Chambers ($n = 6$) were placed at random within separate plots at least 1.5 m apart in the two fields and so were treated as independent replicates; chambers were seated over PVC collars (diameter 20 cm, height 10 cm) which were inserted ca. 2 cm into the soil in order to minimize the effect of cutting fine roots (Heinemeyer et al., 2011) and these remained in situ throughout the study, which was undertaken from May to August 2013. The chambers were programmed to close for 2 min during measurement, with a 30 s “dead band” to allow for mixing of the headspace, in a continuous cycle between chambers. Collars did not exclude roots and no above-ground vegetation was included. Soil temperature and moisture at 5 cm depth were also measured every 15 min adjacent to each chamber collar and averaged over hourly intervals using vertically installed sensors (Delta-T DL2 and GP1 loggers, SM200 soil moisture probes and ST1 temperature probes; Delta-T, Cambridge UK), and hourly meteorological data (solar radiation, air temperature) were recorded

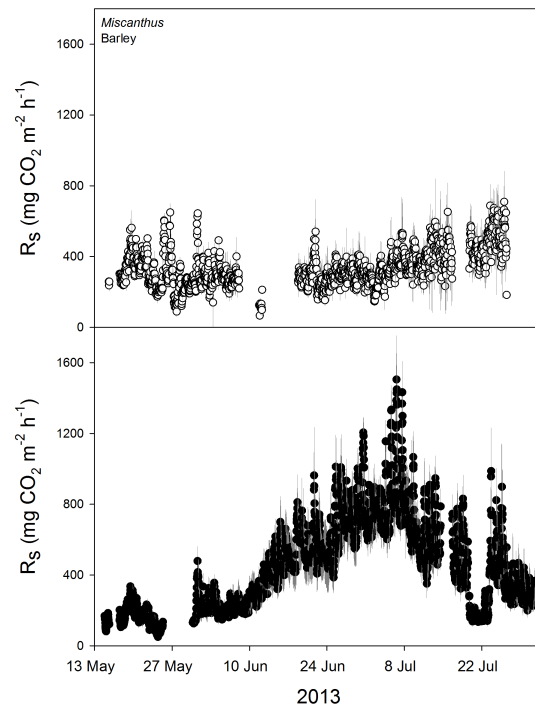


Figure 1. Mean (± 1 SE, $n = 6$) R_s from under *Miscanthus* (top panel) and barley crops (bottom panel) during summer 2013, measured using LI-COR automatic flux chambers.

onsite using a weather station (WP1, Delta-T, Cambridge UK).

2.2 Data processing and analyses

R_s fluxes were calculated as linear regressions of CO_2 concentration against time and corrected for volume and temperature using the manufacturer’s software (see manufacturer’s manual <https://www.licor.com/documents/jtpq4vg358reu4c8r4id.pdf>) and subsequent analyses were conducted using SAS 9.3 (SAS Institute, Cary, NC USA). In the first instance the R_s flux data were hourly averaged for each of the individual 3 months of the study, but to enable diurnal patterns to be more clearly identified, deviation from the daily mean was ascertained by subtracting hourly fluxes from the daily mean R_s and the data for each month were subsequently averaged. Cumulative R_s fluxes were calculated by trapezoidal integration for each chamber within both crops and averaged to estimate the total flux; data were not gap-filled, instead where there were gaps in the data for one crop, the corresponding fluxes from the other were omitted from the calculation to estimate cumulative flux. This resulted in a loss of 15 days over the study period (5 days in May, 6 in June and 4 in July) which represented a total coverage of 80%. These estimates were then used to investigate the influence of sampling hour on the monthly cumulative estimate of R_s by comparing cumulative fluxes calcu-

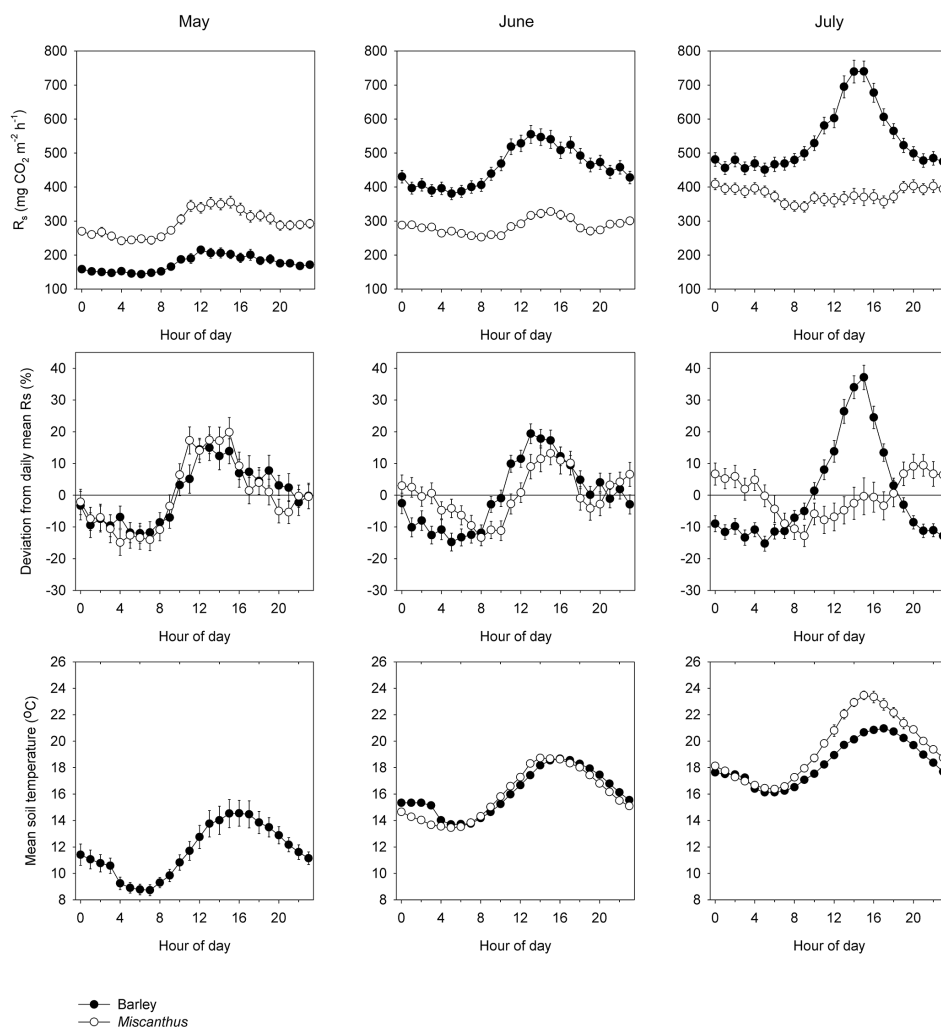


Figure 2. The diurnal pattern of R_s and soil temperature at 5 cm depth for each month of the study for barley and *Miscanthus* crops. Values shown are mean (± 1 SE) average hourly absolute values of flux R_s (top row) and deviation from the daily mean (middle row). The shaded area of the middle panels represents the typical measurement window during which manual sampling would take place. Zero deviation represents the daily mean flux, positive deviation representing fluxes greater than the mean and negative fluxes smaller than the mean.

lated using individual sampling hours (e.g. deriving a cumulative estimate of R_s by integrating only fluxes measured between 14:00 and 15:00) and those using all measurements for each month. The cumulative fluxes for the whole period were tested for normality using a Kolmogorov–Smirnov (K-S) test, but due to the size of the dataset this approach was unsuitable for the cumulative fluxes for sampling hour and instead limits of kurtosis and skewness of ± 2 were used as acceptable deviation from a normal distribution (Field, 2013). Differences in the whole-period cumulative flux were tested using one-way analysis of variance; the effect of crop, sampling hour and month were tested using a mixed-effects model accounting for the repeated estimated totals from each chamber for each month (PROC MIXED in SAS, using the “repeated” statement and an autoregressive covariance structure).

Ancillary environmental data (soil temperature, soil moisture, solar radiation and air temperature) were averaged hourly and over each month using the same method applied to fluxes of R_s . These hourly averaged data were used in regression models to explain the diurnal pattern in R_s , and more detailed analyses were undertaken by performing separate regressions with flux measurements taken during the typical daily measurement window (09:00–16:00) and outside of this window. A further analysis was completed by performing regressions of fluxes against “lagged” measurements of solar radiation, i.e. the effect of prior levels of solar radiation on R_s was tested.

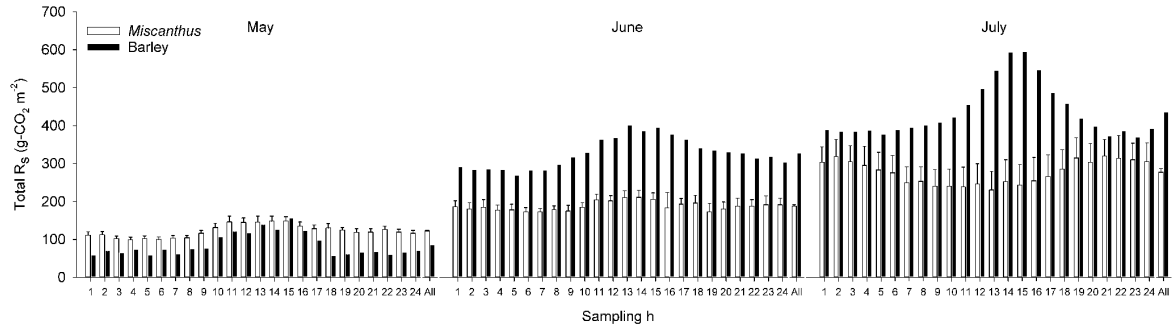


Figure 3. Estimates of the cumulative flux R_s under *Miscanthus* and barley crops using measurements taken using only single hours (1–24) or continuous measurements (All) across 3 months in summer 2013. Values shown are mean cumulative flux (± 1 SE, $n = 6$).

3 Results and discussion

At the start of the study period (May) R_s tended to be higher in the *Miscanthus* than the barley (Fig. 1), but this reversed during June and higher fluxes of R_s were consistently seen under the barley until the end of July. Highest rates of R_s were seen in the barley during early July (ca. $1500 \text{ mg-CO}_2 \text{ m}^{-2} \text{ h}^{-1}$) and declined soon after, whereas R_s climbed steadily under the *Miscanthus* until it reached a maximum of ca. $800 \text{ mg-CO}_2 \text{ m}^{-2} \text{ h}^{-1}$ towards the end of July (Fig. 1).

The hourly monthly averaged fluxes revealed strong diurnal patterns for R_s in both crops (Fig. 2). For all 3 months in barley, maximum R_s was seen between 12:00 and 15:00, minimum around 05:00 and daily means at 09:00 and ca. 20:00. However, R_s changed distinctly in the *Miscanthus* across the 3 months of the study. The magnitude of the daily variation in R_s was remarkably different between the two crops (Fig. 2): for both barley and *Miscanthus* the daily minima were ca. 10% below the daily mean across the study, but where the maxima in barley increased from ca. 15% in May, to 20% in June to as much as 40% above the daily mean in July, it declined in *Miscanthus* from 20% in May, through 15% in June and finally just 10% above the daily mean in July (Fig. 2). During May the daily pattern of R_s was similar for *Miscanthus* and barley but in June, although R_s peaked around 15:00, after initially declining it increased again so that for the period 20:00 to 04:00 was greater than the daily mean. This pattern for R_s changed again through July, when the lowest daily R_s was seen at 09:00 coinciding with the daily mean for barley, whilst R_s for *Miscanthus* did not increase above the daily mean value until 18:00 peaking at 21:00, as much as 5 h later than the peak in the barley.

The data did not significantly differ from a normal distribution (K-S test $D_{[10]} = 0.21$, $p > 0.05$; kurtosis = 0.25, skewness = 0.95). Cumulative R_s flux was greater from barley over the entire study period ($F_{[1,8]} = 6.62$, $p < 0.04$), there was a strong and significant effect of the chosen sampling hour on that estimate ($F_{[23,568]} = 4.28$, $p < 0.0001$) and a resulting strong significant difference between monthly totals ($F_{[2,568]} = 901.35$, $p < 0.0001$). There was a sig-

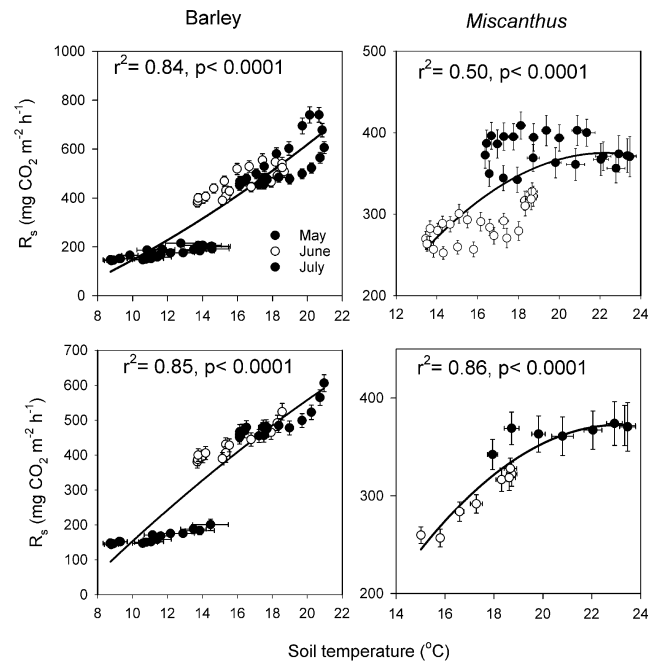


Figure 4. Regression models of monthly mean average hourly (± 1 SE, $n = 6$) flux R_s and soil temperature at 5 cm depth for barley (left column) and *Miscanthus* (right column). Data shown include full 24 h period (top row) and only data from the typical manual measurement window of 09:00–16:00 (bottom row). Soil temperature data were not available for *Miscanthus* during May.

nificant interaction between sampling hour and crop type ($F_{[23,568]} = 3.40$, $p < 0.0001$), and a further significant interaction between crop and month ($F_{[2,568]} = 202.44$, $p < 0.0001$), emphasizing that it is not at all valid to assume that measurements made in the adjacent two crops at the same time were sufficient for comparisons of total R_s flux.

Questions must be raised regarding the validity of using blanket, common sampling strategies to compare R_s between different vegetation types, given the marked diurnal changes in R_s demonstrated here. Indeed, if a protocol were employed which used the same sampling hour over several months,

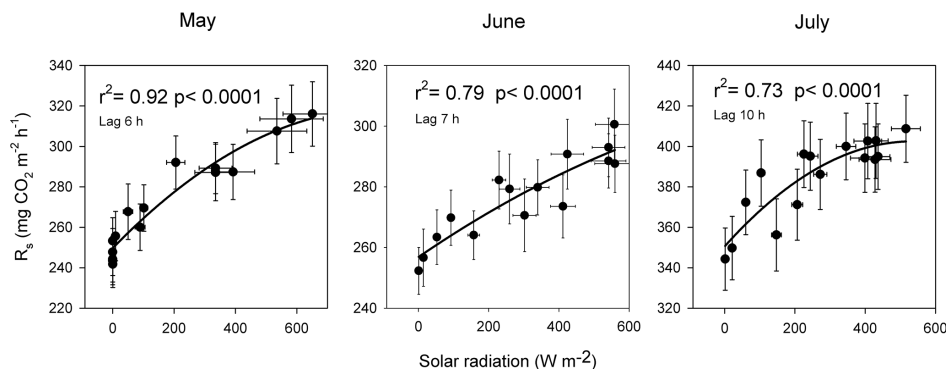


Figure 5. Response of R_s to preceding levels of solar radiation in *Miscanthus* outside of the typical manual measurement window (see text). Values shown are hourly means (± 1 SE, $n = 6$) averaged over each month. The lag time is the length of the offset between the measured solar radiation and the R_s ; for example, for May the relationship shown is that of solar radiation at 12:00 and R_s measured at 18:00 (lag time = 6 h) and the lag times shown for each month are those which yield the closest relationship (highest R^2).

the significant interaction between crop and month shows that the shift from higher R_s in the *Miscanthus* in May to higher fluxes from the barley in June and July would be totally missed. For example, considering only the measurements taken around 15:00 in this study, in May not only would the cumulative R_s from both crops be overestimated, it would be concluded that R_s from barley was higher than or the same as for *Miscanthus*, when that clearly is far from correct (Fig. 3). Over the entire study, measurements made singly at just 15:00 would further bias the conclusions, so that in July R_s from the barley would be overestimated by 40 %, whilst there would be a slight underestimate from the *Miscanthus*, introducing the real possibility of not only exaggerating differences between crops, but also of creating artefactual differences simply resulting from the choice of a standardized measurement protocol.

Analysis of environmental variables showed that R_s in the barley was a function of soil temperature (Fig. 4). Soil temperature also had a strong positive effect on R_s (Fig. 4) in the *Miscanthus* between 09:00 and 16:00 but it did not explain the night-time fluxes, during which time R_s was strongly positively correlated with the level of solar radiation seen earlier in the day (Fig. 5). Several studies have ascribed such hysteresis or apparent asynchronous R_s response to soil temperature to a discrepancy between depth of R_s source and the measurement depth of soil temperature (e.g. Oikawa et al., 2014; Graf et al., 2008; Pavelka et al., 2007) and this explanation cannot be discounted for the response seen here in *Miscanthus* since this study is limited by soil temperature measurements at a single depth (5 cm). Soil moisture has also been proposed as the driver of temperature hysteresis (Ruehr et al., 2010; Riveros-Iregui et al., 2007), though our analysis did not find that relationship on a diurnal scale: multiple regression of R_s with soil temperature and soil moisture did not improve the explanation of the daily variation in R_s . There was a short period (19–22 July) however, following 2 weeks without rain, when soil moisture dropped to a low

of $0.16 \text{ m}^3 \text{ m}^{-3}$ in the arable crop and during this time R_s dropped considerably (Fig. 1). When heavy rainfall elevated soil moisture, rates of R_s increased again which would suggest there is a threshold above which soil moisture is not limiting, an effect similar to that described by Xu and Qi (2001).

Alternatively, if solar radiation is considered a proxy measurement of photosynthesis, the delay in response of R_s may be a function of photosynthate translocation to roots and the rhizosphere, which has been shown to be important to all component processes of R_s (e.g. Heinemeyer et al., 2012) and having witnessed such a lag in an oak savannah system, Baldocchi et al. (2006) propose a similar explanation. This is further supported by Gavrichkova and Kuzyakov (2008) who showed that under constant temperature a diurnal response in R_s will still be evident under maize (*Zea mays*) but not from unplanted controls, and another study which demonstrated that shading maize plants will reduce the diurnal pattern in R_s (Kuzyakov and Cheng, 2004). This suggestion is further strengthened as the delay observed in the current study increased as the *Miscanthus* crop grew taller; from 6 h in May, to 7 h in June and 10 h in July. It is known that translocation is slower in taller vegetation and may also be slowed as transpiration increases (Kuzyakov and Gavrichkova, 2010), as would be expected later in the summer. An obvious physical difference between the two crops monitored in this study is that of size, with *Miscanthus* exceeding 3 m when fully grown and barley less than 0.5 m, so the speed of translocation in barley may be quicker and therefore the effect of photosynthesis in this crop is more confounded with soil temperature (Kuzyakov and Gavrichkova, 2010). Differences in the diurnal pattern of R_s have been demonstrated between grass species and mesquite trees in savannah ecosystems (Barron-Gafford et al., 2011), and again between grasses and forest soils (Heinemeyer et al., 2011) which both reflect the differences presented here of temperature decoupled peak in R_s under the taller trees occurring later in the day. Such a lag in R_s cannot be assumed under all tall vegetation however,

as studies under maize and switchgrass (*Panicum virgatum*), which share the physiological traits of height and C₄ photosynthesis with *Miscanthus*, demonstrated a clear diurnal relationship between R_s and soil temperature (Han et al., 2008; Huang et al., 2016).

A lack of consensus persists regarding the cause of these lags in R_s , a point acknowledged by Phillips et al. (2011) in a study which used computer modelling to attempt to interpret hysteresis, and their analysis led them to conclude that the phenomenon might possibly be due solely to physical, not biological processes. A more recent modelling study provided further explanation of how both photosynthate and soil moisture might affect observed hysteresis (Zhang et al., 2015). On the balance of our analysis and the literature cited here, we are inclined to hypothesize that it is the former which drives the lag presented in our data. However, it should be reiterated that a definitive explanation of the drivers of R_s hysteresis was beyond the scope of the current study and further targeted experimental work should be implemented if this additional aim is to be achieved.

4 Conclusions

In this study strong, clear diurnal patterns in R_s have been demonstrated, and these are not consistent between different crops, even at a single location. Without the use of an automated flux measurement system, this discrepancy would not have been identified, although it is acknowledged that manual sampling techniques have an important role to play particularly when cost of equipment and access to power are a common limitation. It is therefore a matter of great importance that sampling strategies founded upon single daily measurements of R_s are undertaken at a time representative of the daily mean flux, and in order to do so it is vital that a thorough understanding of the diurnal variation is used to guide any sampling strategy. It is therefore suggested that especially in manual sampling experimental designs, the diurnal pattern of R_s is first established by measuring across a full 24 h cycle and that this is revised periodically, since it has been shown here that the diurnal cycle may change greatly over several months. Failure to do so may lead to inaccurate long-term estimates, and in experimental contrasts it may cause grossly incorrect (by as much as 40 % relative to the respective daily means) conclusions to be drawn. Since R_s is such a critical component of the global carbon cycle, it is essential that our understanding of this process, and how it is affected by management practices, be founded upon accurate data, which will only be achieved through well-planned sampling strategies.

Data availability. Data are available from the Environmental Information Data Centre, doi:10.5285/c397d6f4-96f4-4967-a0df-c64ef35ea572 (Keane and Ineson, 2017).

Competing interests. The authors declare that they have no conflict of interest.

Acknowledgements. This work was funded by the Energy Technology Institute as part of the ELUM (Ecosystem Land Use carbon flux Modelling) project and Natural Environment Research Council grant numbers E000762/1, K002538/1. The authors thank the landowner Jonathan Wright for access to the site and to Steven Howarth and Trevor Illingworth of the Biology Department Electronic Workshop for providing extensive electronic engineering support, and Sylvia Toet for providing advice on the manuscript.

Edited by: Y. Kuzyakov

Reviewed by: J. W. Atkins and three anonymous referees

References

- Baldocchi, D., Tang, J. W., and Xu, L. K.: How switches and lags in biophysical regulators affect spatial-temporal variation of soil respiration in an oak-grass savanna, *J. Geophys. Res.-Biogeo.*, 111, G02008, doi:10.1029/2005JG000063, 2006.
- Barrena, I., Menendez, S., Dunabeitia, M., Merino, P., Stange, C. F., Spott, O., Gonzalez-Murua, C., and Estavillo, J. M.: Greenhouse gas fluxes (CO₂, N₂O and CH₄) from forest soils in the Basque Country: Comparison of different tree species and growth stages, *Forest Ecol. Manage.*, 310, 600–611, 2013.
- Barron-Gafford, G. A., Scott, R. L., Jenerette, G. D., and Huxman, T. E.: The relative controls of temperature, soil moisture, and plant functional group on soil CO₂ efflux at diel, seasonal, and annual scales, *J. Geophys. Res.-Biogeo.*, 116, G01023, doi:10.1029/2010JG001442, 2011.
- Bond-Lamberty, B. and Thomson, A.: A global database of soil respiration data, *Biogeosciences*, 7, 1915–1926, doi:10.5194/bg-7-1915-2010, 2010.
- DEFRA: Farming statistics, final crop areas, yields, livestock populations and agricultural workforce at June 2014, A National Statistics publication, UK, 1–22, 2014.
- Drewer, J., Finch, J. W., Lloyd, C. R., Baggs, E. M., and Skiba, U.: How do soil emissions of N₂O, CH₄ and CO₂ from perennial bioenergy crops differ from arable annual crops?, *Global Change Biology Bioenergy*, 4, 408–419, 2012.
- Field, A.: *Discovering statistics using IBM SPSS statistics*, Vol. 3, Sage, London, UK, 2013.
- Finocchiaro, R., Tangen, B., and Gleason, R.: Greenhouse gas fluxes of grazed and hayed wetland catchments in the US Prairie Pothole Ecoregion, *Wetlands Ecology and Management*, 22, 305–324, 2014.
- Gao, Q., Hasselquist, N. J., Palmroth, S., Zheng, Z. M., and You, W. H.: Short-term response of soil respiration to nitrogen fertilization in a subtropical evergreen forest, *Soil Biol. Biochem.*, 76, 297–300, doi:10.1016/j.soilbio.2014.04.020, 2014.
- Gattinger, A., Muller, A., Haeni, M., Skinner, C., Fliessbach, A., Buchmann, N., Mader, P., Stolze, M., Smith, P., Scialabba, N. E. H., and Niggli, U.: Enhanced top soil carbon stocks under organic farming, *P. Natl. Acad. Sci. USA*, 109, 18226–18231, 2012.

- Gauder, M., Butterbach-Bahl, K., Graeff-Honninger, S., Claupein, W., and Wiegel, R.: Soil-derived trace gas fluxes from different energy crops – results from a field experiment in Southwest Germany, *Global Change Biology Bioenergy*, 4, 289–301, 2012.
- Gavrichkova, O. and Kuzyakov, Y.: Ammonium versus nitrate nutrition of *Zea mays* and *Lupinus albus*: Effect on root-derived CO₂ efflux, *Soil Biol. Biochem.*, 40, 2835–2842, 2008.
- Graf, A., Weihermüller, L., Huisman, J. A., Herbst, M., Bauer, J., and Vereecken, H.: Measurement depth effects on the apparent temperature sensitivity of soil respiration in field studies, *Biogeosciences*, 5, 1175–1188, doi:10.5194/bg-5-1175-2008, 2008.
- Han, G.-X., Zhou, G.-S., and Xu, Z.-Z.: Temporal variation of soil respiration and its affecting factors in a maize field during maize growth season, *Shengtaixue Zazhi*, 27, 1698–1705, 2008.
- Heinemeyer, A., Di Bene, C., Lloyd, A. R., Tortorella, D., Baxter, R., Huntley, B., Gelsomino, A., and Ineson, P.: Soil respiration: implications of the plant-soil continuum and respiration chamber collar-insertion depth on measurement and modelling of soil CO₂ efflux rates in three ecosystems, *Eur. J. Soil Sci.*, 62, 82–94, doi:10.1111/j.1365-2389.2010.01331.x, 2011.
- Heinemeyer, A., Tortorella, D., Petrovicova, B., and Gelsomino, A.: Partitioning of soil CO₂ flux components in a temperate grassland ecosystem, *Eur. J. Soil Sci.*, 63, 249–260, doi:10.1111/j.1365-2389.2012.01433.x, 2012.
- Huang, J., Gao, Z. J., Chen, J., Zhang, H., and Xu, B. C.: Diurnal and seasonal variations of soil respiration rate under different row-spacing in a *Panicum virgatum* L. field on semi-arid Loess Plateau of China, *Journal of Arid Land*, 8, 341–349, 2016.
- Johnson, J. M. F., Archer, D., and Barbour, N.: Greenhouse Gas Emission from Contrasting Management Scenarios in the Northern Corn Belt, *Soil Sci. Soc. Am. J.*, 74, 396–406, 2010.
- Keane, B. and Ineson, P.: Soil respiration under *Miscanthus × giganteus* and an adjacent barley crop, Environmental Information Data Centre, doi:10.5285/c397d6f4-96f4-4967-a0df-c64ef35ea572, 2017.
- Kessavalou, A., Mosier, A. R., Doran, J. W., Drijber, R. A., Lyon, D. J., and Heinemeyer, O.: Fluxes of carbon dioxide, nitrous oxide, and methane in grass sod and winter wheat-fallow tillage management, *J. Environ. Qual.*, 27, 1094–1104, 1998.
- Kuzyakov, Y. and Cheng, W.: Photosynthesis controls of CO₂ efflux from maize rhizosphere, *Plant Soil*, 263, 85–99, doi:10.1023/B:PLSO.0000047728.61591.fd, 2004.
- Kuzyakov, Y. and Gavrichkova, O.: REVIEW: Time lag between photosynthesis and carbon dioxide efflux from soil: a review of mechanisms and controls, *Glob. Change Biol.*, 16, 3386–3406, doi:10.1111/j.1365-2486.2010.02179.x, 2010.
- Mosier, A. R.: Chamber and isotope techniques, *Life Sci. R.*, 47, 175–187, 1989.
- Oikawa, P. Y., Grantz, D. A., Chatterjee, A., Eberwein, J. E., Allsman, L. A., and Jenerette, G. D.: Unifying soil respiration pulses, inhibition, and temperature hysteresis through dynamics of labile soil carbon and O₂, *J. Geophys. Res.-Biogeo.*, 119, 521–536, doi:10.1002/2013jg002434, 2014.
- Pavelka, M., Acosta, M., Marek, M. V., Kutsch, W., and Janous, D.: Dependence of the Q₁₀ values on the depth of the soil temperature measuring point, *Plant Soil*, 292, 171–179, doi:10.1007/s11104-007-9213-9, 2007.
- Phillips, C. L., Nickerson, N., Risk, D., and Bond, B. J.: Interpreting diel hysteresis between soil respiration and temperature, *Glob. Change Biol.*, 17, 515–527, doi:10.1111/j.1365-2486.2010.02250.x, 2011.
- Riveros-Iregui, D. A., Emanuel, R. E., Muth, D. J., McGlynn, B. L., Epstein, H. E., Welsch, D. L., Pacific, V. J., and Wraith, J. M.: Diurnal hysteresis between soil CO₂ and soil temperature is controlled by soil water content, *Geophys. Res. Lett.*, 34, L17404, doi:10.1029/2007gl030938, 2007.
- Ruehr, N. K., Knohl, A., and Buchmann, N.: Environmental variables controlling soil respiration on diurnal, seasonal and annual time-scales in a mixed mountain forest in Switzerland, *Biogeochemistry*, 98, 153–170, doi:10.1007/s10533-009-9383-z, 2010.
- Savage, K. E. and Davidson, E. A.: A comparison of manual and automated systems for soil CO₂ flux measurements: trade-offs between spatial and temporal resolution, *J. Exp. Bot.*, 54, 891–899, doi:10.1093/jxb/erg121, 2003.
- Schlesinger, W. H. and Andrews, J. A.: Soil respiration and the global carbon cycle, *Biogeochemistry*, 48, 7–20, 2000.
- Shvaleyeva, A., Silva, F. C. E., Costa, J. M., Correia, A., Anderson, M., Lobo-do-Vale, R., Fangueiro, D., Bicho, C., Pereira, J. S., Chaves, M. M., Skiba, U., and Cruz, C.: Comparison of methane, nitrous oxide fluxes and CO₂ respiration rates from a Mediterranean cork oak ecosystem and improved pasture, *Plant Soil*, 374, 883–898, 2014.
- Toma, Y., Fernandez, F. G., Sato, S., Izumi, M., Hatano, R., Yamada, T., Nishiwaki, A., Bollero, G., and Stewart, J. R.: Carbon budget and methane and nitrous oxide emissions over the growing season in a *Miscanthus sinensis* grassland in Tomakomai, Hokkaido, Japan, *Global Change Biology Bioenergy*, 3, 116–134, 2011.
- von Arnold, K., Nilsson, M., Hanell, B., Weslien, P., and Klemmedtson, L.: Fluxes of CO₂, CH₄ and N₂O from drained organic soils in deciduous forests, *Soil Biol. Biochem.*, 37, 1059–1071, 2005.
- Wang, Y. D., Wang, H. M., Wang, Z. L., Zhang, W. J., Guo, C. C., Wen, X. F., and Liu, Y. F.: Optimizing manual sampling schedule for estimating annual soil CO₂ efflux in a young exotic pine plantation in subtropical China, *Eur. J. Soil Biol.*, 52, 41–47, doi:10.1016/j.ejsobi.2012.06.002, 2012.
- Xu, M. and Qi, Y.: Soil-surface CO₂ efflux and its spatial and temporal variations in a young ponderosa pine plantation in northern California, *Glob. Change Biol.*, 7, 667–677, doi:10.1046/j.1354-1013.2001.00435.x, 2001.
- Zhang, Q., Katul, G. G., Oren, R., Daly, E., Manzoni, S., and Yang, D. W.: The hysteresis response of soil CO₂ concentration and soil respiration to soil temperature, *J. Geophys. Res.-Biogeo.*, 120, 1605–1618, doi:10.1002/2015jg003047, 2015.
- Zhang, Z. H., Duan, J. C., Wang, S. P., Luo, C. Y., Zhu, X. X., Xu, B. B., Chang, X. F., and Cui, S. J.: Effects of seeding ratios and nitrogen fertilizer on ecosystem respiration of common vetch and oat on the Tibetan plateau, *Plant Soil*, 362, 287–299, 2013.