

This is a repository copy of *Direct Identification of Monolayer Rhenium Diselenide by an Individual Diffraction Pattern*.

White Rose Research Online URL for this paper:

<https://eprints.whiterose.ac.uk/117246/>

Version: Accepted Version

Article:

Fei, Zhen, Wang, Bo, Ho, Ching-Hwa et al. (4 more authors) (2017) Direct Identification of Monolayer Rhenium Diselenide by an Individual Diffraction Pattern. *Nano Research*. pp. 2535-2544. ISSN 1998-0124

<https://doi.org/10.1007/s12274-017-1639-7>

Reuse

Items deposited in White Rose Research Online are protected by copyright, with all rights reserved unless indicated otherwise. They may be downloaded and/or printed for private study, or other acts as permitted by national copyright laws. The publisher or other rights holders may allow further reproduction and re-use of the full text version. This is indicated by the licence information on the White Rose Research Online record for the item.

Takedown

If you consider content in White Rose Research Online to be in breach of UK law, please notify us by emailing eprints@whiterose.ac.uk including the URL of the record and the reason for the withdrawal request.

Direct Identification of Monolayer Rhenium Diselenide by an Individual Diffraction Pattern

Zhen Fei, Bo Wang, Ching-Hwa Ho, Fang Lin, Jun Yuan, Ze Zhang and Chuanhong Jin*

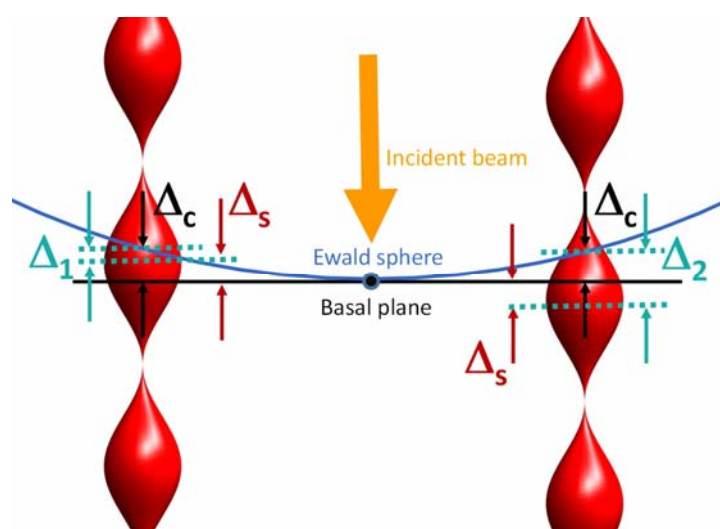
Zhejiang University, China

Lanzhou University, China

National Taiwan University of Science and Technology, Taiwan

South China Agricultural University, China

University of York, UK



Schematic description of the asymmetrical intersections between a pair of crystallographically equivalent shape factors and Ewald sphere.

Direct identification of monolayer rhenium diselenide by an individual electron diffraction pattern

Zhen Fei¹, Bo Wang², Ching-Hwa Ho³, Fang Lin⁴, Jun Yuan^{5,1}, Ze Zhang¹ and Chuanhong Jin¹ (✉)

¹ State Key Laboratory of Silicon Materials, School of Materials Science and Engineering, Zhejiang University, Hangzhou, 310027, China

² School of Physical Science and Technology, Lanzhou University, Lanzhou, Gansu 730000, China

³ Graduate Institute of Applied Science and Technology, National Taiwan University of Science and Technology, Taipei 106, Taiwan

⁴ College of Electronic Engineering, South China Agricultural University, Guangzhou, Guangdong 510642, China

⁵ Department of Physics, University of York, Heslington, York YO10 5DD, UK

Received: day month year

Revised: day month year

Accepted: day month year
(automatically inserted by
the publisher)

© Tsinghua University Press
and Springer-Verlag Berlin
Heidelberg 2014

KEYWORDS

rhenium diselenide,
electron diffraction,
monolayer, reciprocal rel-
rod

ABSTRACT

In the current extensive studies of transition metal dichalcogenides (TMDCs), compared to hexagonal layered materials, like graphene, hBN and MoS₂, low symmetry layered two-dimensional (2D) crystals have shown great potential for applications in anisotropic devices. Rhenium diselenide (ReSe₂) has the bulk space group P $\bar{1}$ and belongs to triclinic crystal system with a deformed cadmium iodide type structure. Here we propose an electron diffraction based method to distinguish monolayer ReSe₂ membrane from multilayer ReSe₂, and its two different vertical orientations, our method could also be applicable to other low symmetry crystal systems, including both triclinic and monoclinic lattices, as long as their third unit-cell basis vectors are not perpendicular to their basal planes. Our experimental results are well explained by kinematical electron diffraction theory and corresponding simulations. The generalization of our method to other 2D materials, like graphene, is also discussed.

1 Introduction

Since the successful fabrication of atomically thin carbon film field effect transistor, there has been growing interest in investigating van der Waals layered materials among the research communities[1]. In particular, the family of transition metal dichalcogenides, when reduced to atomic thicknesses, shows great potential for future applications in semiconducting electronics and optoelectronics, and

also opened up more opportunities to explore novel physical phenomena in condensed matter physics, such as valley physics[2, 3], superconductivity[4], charge density waves[5, 6], and large magnetoresistance[7].

Of these materials, low symmetry 2D materials have emerged as anisotropic electronic and optoelectronic candidates. Compared to graphene and MoS₂ with the highly symmetric hexagonal structures, those 2D

Address correspondence to Chuanhong Jin, chhjin@zju.edu.cn

materials with reduced symmetry, ranging from black phosphorus[8-10] and WTe₂[7] to ReS₂ and ReSe₂, have internal anisotropic physical properties. Moreover, ReS₂ and ReSe₂ share similar crystal structures, they both have a distorted octahedral 1T structure and belong to triclinic crystal system, and Re atoms form zigzag chains in the basal plane, arising from the Peierls distortion. Therefore, ReSe₂ and ReS₂ flakes have both in-plane and out-of-plane anisotropy, and recently there have been numbers of applications based on their anisotropic properties [11-16].

When materials are thinned down to atomically thin membranes, thickness begins to play an important role in tailoring their properties, and vice versa, there are a variety of techniques to determine their thicknesses, ranging from image contrast of reflected light microscopy[17-23], second harmonic microscopy[24-27], intuitive atomic force microscopy and cross-sectional imaging to Raman and photoluminescence spectroscopy[28-31]. In the field of electron microscopy, there are miscellaneous methods to identify thickness as well, which include peak shift in plasmon spectroscopy[32, 33], direct high-resolution transmission electron microscopy (HRTEM) imaging combined with simulations[34] and linearity in annular dark field scanning transmission electron microscope (ADF-STEM) signals[35, 36]. Apart from the above methods, electron diffraction analysis [33, 37-42] has also been demonstrated as an efficient tool to determine thickness in 2D materials, since it could be conducted on any commercial uncorrected TEM conveniently with negligible beam damages on a large area of pristine crystalline samples. Furthermore, diffraction based methods usually involve a series of sample tilting or use the relative ratio of the chosen diffraction spots, and some researchers noticed the intensity mismatch in a pair of crystallographically equivalent diffraction spots (Friedel pair)[40, 43, 44], here we demonstrate a method of identifying monolayer ReSe₂ by the centrosymmetry with a single diffraction pattern.

2 Theoretical basis and simulation

To illustrate the essence of electron diffraction pattern evolution with thickness of atomically thin ReSe₂, an

analytic kinematical diffraction theory approximation has been developed in this study, which is usually applicable to ultra-thin specimens and light-element atoms[37, 40]. In the classic description of electron diffraction processes, electrons are scattered by specimen's electrostatic potential, and according to the first Born approximation, amplitude of diffracted beam is proportional to the Fourier transform of the corresponding specimen's potential. Furthermore, without considering the effect of interatomic bonding, the total specimen's potential could be written as a superposition of all individual atoms' potentials and the Fourier transform of one atom's potential is its atomic scattering factor[45-47].

In the case of few-layer ReSe₂, we first take summations of atomic scattering factors over a unit cell, containing four rhenium and eight selenium atoms as shown in Fig. 1(a)&(b), and then combine all unit cells along the thickness direction, the two terms, as a whole, are defined as a basis sum term. Then we sum this term laterally over the entire basal plane, defined as the two-dimensional lattice summation term[37]. This is formulated as

$$f(\vec{K}) = \sum_{lattice} e^{-i2\pi\vec{K}\cdot\vec{R}_l} \sum_{basis} e^{-i2\pi\vec{K}\cdot\vec{R}_b} f_{atom(Re,Se)}(\vec{K}) \quad (1)$$

where R_l and R_b is the discrete lattice and basis vector of ReSe₂ crystal respectively, \vec{K} is the difference between diffracted and incident electron wave vector, $f_{atom(Re,Se)}(\vec{K})$ is the atomic scattering factor for Re or Se atoms, and this formula could be further simplified as

$$f(\vec{K}) = s_{lattice}(\vec{K}) s_{stacking}(\vec{K}) F_{structure}(\vec{K}) \quad (2)$$

where the three terms represent summations over 2D lattice plane, vertical direction and one unit cell respectively. We will discuss in detail about the multiplication of the three terms. The first term is the result of in-plane periodicity of layered ReSe₂ crystal, by taking square of the modulus, and hence,

$$|s_{lattice}(\vec{K})|^2 = \frac{\sin^2(\frac{n_1 2\pi\vec{K}\cdot\vec{a}}{2}) \sin^2(\frac{n_2 2\pi\vec{K}\cdot\vec{b}}{2})}{\sin^2(\frac{2\pi\vec{K}\cdot\vec{a}}{2}) \sin^2(\frac{2\pi\vec{K}\cdot\vec{b}}{2})} \quad (3)$$

where \vec{a} and \vec{b} are in-plane lattice vectors indicated in Fig. 1(a)&(b), n_1 and n_2 are the

number of unit cells along their corresponding directions. This equation could be treated as a Dirac delta function, $|s_{lattice}(\vec{K})|^2 \sim n_1 n_2 \delta(\alpha) \delta(\beta)$ as long as n_1 and n_2 are large, in other words, the illuminated area is large enough. α and β represent deviations from the nearest reciprocal lattice points along basal plane directions. Therefore, this term is non-zero only for $\vec{K} = \vec{G} + \vec{k}_\perp$, where $\vec{G} = h\vec{a}^* + k\vec{b}^* + l\vec{c}^*$, representing the reciprocal lattice points, and \vec{k}_\perp is the perpendicular component of the vector describing deviation from the reciprocal lattice point. Therefore, non-zero values are often interpreted as reciprocal rel-rods. The second term is determined by the stacking of unit cells in the out-of-plane direction, expressed as

$$|s_{stacking}(\vec{K})|^2 = \frac{\sin^2\left(\frac{2\pi N \vec{K} \cdot \vec{c}}{2}\right)}{\sin^2\left(\frac{2\pi \vec{K} \cdot \vec{c}}{2}\right)} \quad (4)$$

which is similar to the first term, but N is much smaller since it represents the layer number of the corresponding atomically thin layered ReSe₂ crystal. Therefore, the value of the second term, also defined as the shape factor in conventional bulk crystal, will oscillate along the z direction, with the periodicity of c^* , the length of \vec{c}^* , but remain constant for monolayer. All direction specifications in our discussions, involving xyz-Cartesian coordinates, are consistent with the illustration in Fig. 1(a)&(b). The last term is named as the structure factor, by simply summing up all atomic factors in one unit cell, which could be calculated numerically according to the inversion symmetry inside the unit cell, then

$$|F_{structure}(\vec{K})|^2 = 4[f_{Re}(\vec{K}) \sum_{i=1}^2 \cos 2\pi(h\Delta a_i + k\Delta b_i + l\Delta c_i) + f_{Se}(\vec{K}) \sum_{j=1}^4 \cos 2\pi(h\Delta a_j + k\Delta b_j + l\Delta c_j)]^2 \quad (5)$$

where Δa_i , Δb_i and Δc_i represents Re atom's relative coordinate deviations from the inversion center of unit cell in the \vec{a} , \vec{b} and \vec{c} direction respectively, therefore, in an unit cell, there are two and four crystallographically inequivalent atoms for Re and Se respectively, and their atomic scattering factors are well tabulated[45].

In brief, the first term restricts non-zero values to the rel-rods in reciprocal space, which are located at the reciprocal lattice points and perpendicular to the basal plane, then the shape factors modulate the intensity along the thickness direction, with a characteristic length of c^* , finally the structure factors will tune the intensity much more slowly in z direction, and at different (h, k) points in the basal plane. Here, we are mainly focusing on the shape factor, an indicator of the sample thickness. In Fig. 1(c), the shape factors of a bi-layer ReSe₂ are visualized in the reciprocal space. As we can see, the plane formed by vector \vec{a}^* and \vec{b}^* is inclined in the reciprocal space, as the third unit cell basis vector in direct space is not perpendicular to the basal plane and those inclined planes will intersect with basal plane along a series of parallel lines. More specifically, the distances of the nearest reciprocal lattice points with basal plane will vary periodically, as illustrated in Fig. 1(d).

As we have discussed in the kinematical diffraction theory, electron diffraction pattern could be interpreted as the intersections between Ewald sphere and reciprocal rel-rods, also known as the multiplication of the shape factors and the structure factors. Figure. 2(a) shows a pair of crystallographically equivalent shape factors and their intersections with Ewald sphere. It is noted that the two intersections are not symmetrical, and the distances between the intersections and centroids of the shape factor (reciprocal lattice points) are written as Δ_1 and Δ_2 respectively, which determine their corresponding intensities. In addition, the distance between Ewald sphere and basal plane is denoted as Δ_c , and the distance between the centroid of the shape factor and basal plane is Δ_s , therefore, $\Delta_1 = |\Delta_s - \Delta_c|$ and $\Delta_2 = |\Delta_s + \Delta_c|$. Such a mismatch could be attributed to the curvature effect of Ewald sphere and the inclined nature of \vec{a}^* and \vec{b}^* , the reciprocal basis vectors in the triclinic crystal lattice. In other words, when the incident beam is perpendicular to the basal plane, the ReSe₂ crystal do not sit in the zone axis direction, and thus the prerequisite of well-known Friedel law could not be satisfied, hence, there is a mismatch in the intensity for a pair of crystallographically equivalent spots except for monolayer. As illustrated in Fig. 2(b), Δ_s is

determined by the vertical position of the reciprocal lattice point, as we have shown in Fig. 1(c)&(d), Δ_c is determined by the curvature of Ewald sphere, which will increase when it deviates away from the origin. Moreover, Δ_c is usually small compared to c^* , which could be regarded as a small increment or decrement along the shape factor, and thus, such a mismatch is approximately proportional to the derivative of the intensity of shape factor with respect to z-direction, as shown in Fig. 2(b). Moreover, such a mismatch could also be interpreted as a result of phase shift in the intensity vs tilt-angle curve. Figure. 2 (c)-(f) display how the simulated intensities of ReSe₂ with different thicknesses vary with tilt-angle, we have chosen several pairs of diffraction spots to explore the 3D information of the reciprocal space. It is now clear that compared to multilayer, the selected diffraction spot intensities of monolayer ReSe₂ are insensitive to tilt-angle and the corresponding Friedel pairs have negligible intensity mismatch. More details about the effects of tilting monolayer ReSe₂ are discussed in Fig. S-1 in Electronic Supplementary Material (ESM). Furthermore, notice the phase shift Δ_s will cause the two curves to separate from each other, and thus the intensity mismatch. Such a mismatch is dependent on the origin position of the curve, in other words, the intersection of Ewald sphere and shape factor. For example, reciprocal lattice point pair of $(\bar{2}\bar{3}1)$ & $(23\bar{1})$ are far from basal plane, and the corresponding origin positions of them are shifted into a fast oscillation zone, as illustrated in Fig. 2(e). As a result, such a mismatch at origin increases when layer number goes from monolayer to bilayer, and drops down at 3L, then rises again for 4L. It is worth to point out that with the increase in distance of diffraction spot from the tilt-axis, the sensitivity to tilt-angle increases, since the corresponding tilt-arm will increase, as indicated in Fig. 2(f), the modulation period is larger than that of (e). Apart from choosing different Friedel pairs, increasing Ewald sphere curvature could also broaden intensity mismatch, see more discussions in Fig. S-2 in ESM.

Through our discussions on the theory and simulations, we demonstrates that, by figuring out the intensity mismatch between a Friedel pair, we could retrieve part of the 3D information in the reciprocal

space without tilting our ReSe₂ crystal, therefore, our method could be used to unambiguously identify monolayer ReSe₂ crystalline with one single diffraction pattern.

3 Results and discussion

Atomically resolved ADF-STEM image was employed to confirm monolayer ReSe₂ sample, as a reference to demonstrate our following diffraction based method. In Fig. 3(a), atoms of rhenium and selenide could be clearly resolved, and brighter atoms represent rhenium atoms since heavier atoms scatter electrons more strongly. In the left side of this figure, diamond-shaped-chains, a fingerprint of monolayer ReSe₂, is distinctively distinguishable, as illustrated by the superimposed atomic model (inset is the corresponding low magnification ADF-STEM image). Once the monolayer region was confirmed, different thicknesses could be identified according to the step-like intensity profiles, as shown in Fig. 3(b)[35, 36]. Therefore, this method was employed to cross check the thickness of few-layer ReSe₂ membranes.

ReSe₂ belongs to triclinic crystal system, which has the lowest symmetry of all, and lacks the symmetry of C₂. In other words, flipping ReSe₂ membrane over is not crystallographically equivalent under the same experimental configuration, and we have to determine its vertical orientation at first. Figure. 4(a)&(b) display simulated diffraction patterns for upside and downside oriented monolayers ReSe₂ respectively, which are obtained by flipping around the y-axis. As we discussed earlier, the shape factors of monolayer remain constant along z-direction, and the resultant diffraction pattern should flip around the same axis as the crystal does, but the corresponding multi-layer ReSe₂ behave differently, they flip around the horizontal axis, the x-axis, more details are discussed in Fig. S-3 in ESM. Experimental diffraction patterns for the corresponding two vertical orientations are shown in Fig. 4(c)&(d), and they are consistent with simulated ones. Next, for the concern of signal noise ratio, lower order diffraction spots suffer from the background noise of central beam, hence we select Friedel pairs away from central beam and those with high brightness. Figure 4(e) shows intensity mismatch of the chosen Friedel pairs in different layers from

experimental diffraction patterns, intensity mismatch is defined as $|I_1 - I_2| / (I_1 + I_2)$, where I_1 and I_2 are the integrated intensity of a Friedel pair (background subtracted). We find that intensity mismatch is negligible in monolayer ReSe₂, and becomes significant in multilayers, but the trends are not always monotonically increasing and the error bars increase dramatically since multilayers are more sensitive to small tilt angles (see more discussions on the effects of different tilt-axis in Fig. S-4 in ESM). In particular, the pair of $(\bar{2}\bar{3}1)$ and $(23\bar{1})$, whose intensity mismatch experienced ups and downs from monolayer to four-layer, behaves exactly as expected from the previous discussions in Fig. 2(e). For full comparisons of simulated and experimental diffraction patterns for different thicknesses and extended discussions, see Fig. S-5 in ESM. Finally, our method is not limited to ReSe₂, from the derivation of the theory, we learned that the layered crystals of triclinic and monoclinic systems will follow the same rule, since their third unit-cell basis vectors are also not perpendicular to the basal plane. Moreover, for high symmetry layered crystals, like graphene, our method will still work if they are in the AB-stacking configuration, and the generalization to AA-stacking requires tilting sample off the zone axis, details are discussed in Fig. S-6 in ESM.

In conclusion, by measuring the intensity difference between a pair of crystallographically equivalent diffraction spots, we could distinguish monolayer from multi-layer ReSe₂ membranes, and identify its vertical orientations.

Generally, inspired by the method of tilt-series diffraction analysis to determine thickness of atomically thin crystals, we took advantage of the intrinsic low symmetry property of ReSe₂ crystal structure, and acquired an individual diffraction pattern containing the information of intensity mismatch of a pair of crystallographically equivalent spots, to identify monolayer ReSe₂. Furthermore, by visually comparing the diffraction patterns of monolayers ReSe₂, we confirmed its two vertical orientations, which could be exploited for anisotropic applications. More importantly, this method, in principle, could be generalized to other 2D materials with triclinic or monoclinic lattice structures, and even graphene-like high symmetry 2D materials.

4 Conclusions

We conclude that by quantitatively analyzing electron diffraction pattern of few-layer ReSe₂ membranes, it is possible to identify monolayer ReSe₂ and its vertical orientations without taking tilt-series diffraction patterns, as an alternative to the previous reported thickness determination method by electron diffraction. In our study, we have distinguished monolayer ReSe₂ from multilayer according to the intensity mismatches of Friedel pairs, and determined its vertical orientations through the low symmetric diffraction patterns. This analytical technique is based on the low symmetry of ReSe₂ crystal structure and the curvature of Ewald sphere, finally it could be applicable to crystals of both triclinic system and monoclinic system, as long as their third unit-cell basis vectors are not perpendicular to the basal plane, and generalized to even those high symmetry 2D materials.

Methods

Layered crystals of ReSe₂ were grown by chemical-vapor transport method using I₂ as the transport agent. The method consisted of two steps: First, prior to the crystal growth the powdered compound of the rhenium diselenide was prepared from the elements (Re: 99.95% and Se: 99.999%) by reaction at 1030 °C for 10 days in evacuated quartz ampoules. About 10 g of the elements were introduced into a quartz ampoule (19mm OD, 14mm ID, 15 cm length), which was then evacuated to about 10⁻⁶ torr and sealed. For crystal growth, the chemical transport was achieved by an appropriate amount (~10 g) of synthesized compound together with the transport agent (I₂ about 10 mg/cm³) placed in a quartz ampoule (22mm OD, 17mm ID, and 20 cm in length), which was then cooled with liquid nitrogen, evacuated to 10⁻⁶ torr and sealed. The quartz tube was then placed in a horizontal three-zone furnace and the charge pre-reacted for 24 h at 800 °C while the temperature of the growth zone was set at 1000 °C to prevent the transport of the product. The furnace was slowly set to give a constant temperature of 1000 °C across the reaction tube, and then programmed over 24 h to produce the temperature gradient at which single crystal growth takes place. Best results were obtained with temperature setting of

about 1060→1010 °C in a temperature gradient of about -2.5 °C/cm and growth time of about 20 days.

To prepare free-standing few-layer ReSe₂ membranes, polydimethylsiloxane (PDMS) was used for micromechanical exfoliation of bulk high quality ReSe₂ crystals, and then thin flakes were deposited on top of an oxidized silicon wafer. Later, few-layer membranes were identified by optical microscope and the desired region was carefully aligned to holes of a lacey carbon TEM grid. Then, acetone was used to join carbon film and sample through evaporation of acetone in air, subsequently, sodium hydroxide (NaOH) solution was used to etch away the underneath SiO₂ layer. Finally, the TEM grid with sample on it was immersed in water to dissolve residual NaOH solute, and subsequently in acetone to prevent support film from rupturing, after dried in air, our sample was ready for further characterizations.

Diffraction patterns of specimen were recorded on a FEI Tecnai G-F20 microscope operated at 200 kV. The uniform lateral dimension of few-layer membrane is on the scale of few microns, therefore an illuminated area of 200 nm in diameter was chosen by selected area aperture, to ensure electrons are from the region of interest. To obtain diffractions of the specimen with opposed vertical directions, the TEM grid was reloaded and flipped over outside the microscope. For quantitative diffraction intensity analysis, the exposure time was limited in the range where the response function of CCD detector remain linear.

The ADF-STEM images were recorded on a probe-corrected Titan ChemiSTEM at an acceleration voltage of 200 kV. After acquiring the atomically resolved images, we further processed images by a technique of superimposing a stack of drift corrected images to enhance signal to noise ratio for better visibility, hence, monolayer and multi-layer ReSe₂ membranes can be unambiguously distinguished, more specifically, multilayer ReSe₂ are stacked with a lateral shift in basal plane, and the in-plane motif of diamond-shaped-chains for monolayer will be blurred as layer number increases. In addition, intensity profiles extracted from low-magnification ADF-STEM image could be employed to determine the corresponding relative thickness, since the number of large-angle scattered electrons is approximately proportional to

the number of atoms involved.

Electron diffraction simulations were completed with the open source multislice simulation software package QSTEM[48]. At first, large enough atomic structures with different orientations (varying tilt-angle and tilt-axis) were exported from the software of CrystalMaker, and they were then feed to QSTEM to generate corresponding diffraction patterns, the above processes were automated with a home-made Python script. Under the settings of QSTEM, a box with dimensions of 300 Å× 300 Å× 100 Å (150Å×150Å×100Å for large angle tilting) was used and the slice thickness was 4.7Å, with the tilt-angle ranging from -5° to 5° in steps of 1° (from -30° to 30° in steps of 2° for large angle tilt), with the in-plane rotation of tilt-axis ranging from 15° to 360° in steps of 15°. In addition, a 1k×1k pixel² array was adopted (500×500 for large angle tilting) to keep a resolution of 0.3Å, and the acceleration voltage was set to 200 kV (60 kV for low voltage simulations).

Acknowledgements

This work is financially supported by the National Basic Research Program of China (Grant No. 2014CB932500 and No. 2015CB921004), the National Natural Science Foundation of China (Grant No. 51472215, No. 51222202, No. 61571197 and No. 61172011), the 111 project (No. B16042) and the Ministry of Science and Technology, Taiwan (MOST 104-2112-M-011-002-MY3). The authors would like to thank Prof. Christoph Koch from Humboldt University of Berlin for the fruitful discussions on multislice simulations. J.Y. acknowledges the EPSRC (UK) funding EP/G070326 and EP/J022098 and supports from Pao Yu-Kong International Foundation for a Chair Professorship in ZJU. This work made use of the resources of the Center of Electron Microscopy of Zhejiang University.

References

- [1] Novoselov, K. S.; Geim, A. K.; Morozov, S. V.; Jiang, D.; Zhang, Y.; Dubonos, S. V.; Grigorieva, I. V.; Firsov, A. A. Electric field effect in atomically thin carbon films. *Science* **2004**, *306*, 666-669.
- [2] Zeng, H.; Dai, J.; Yao, W.; Xiao, D.; Cui, X. Valley

- polarization in MoS₂ monolayers by optical pumping. *Nat. Nanotechnol.* **2012**, *7*, 490-493.
- [3] Xiao, D.; Liu, G.-B.; Feng, W.; Xu, X.; Yao, W. Coupled spin and valley physics in monolayers of MoS₂ and other group-VI dichalcogenides. *Phys. Rev. Lett.* **2012**, *108*, 196802.
- [4] Sipos, B.; Kusmartseva, A. F.; Akrap, A.; Berger, H.; Forró, L.; Tutiš, E. From Mott state to superconductivity in 1T-TaS₂. *Nat. Mater.* **2008**, *7*, 960-965.
- [5] Rossnagel, K. On the origin of charge-density waves in select layered transition-metal dichalcogenides. *J. Phys. Condens. Matter* **2011**, *23*, 213001.
- [6] Neto, A. C. Charge density wave, superconductivity, and anomalous metallic behavior in 2D transition metal dichalcogenides. *Phys. Rev. Lett.* **2001**, *86*, 4382.
- [7] Ali, M. N.; Xiong, J.; Flynn, S.; Tao, J.; Gibson, Q. D.; Schoop, L. M.; Liang, T.; Haldolaarachchige, N.; Hirschberger, M.; Ong, N. Large, non-saturating magnetoresistance in WTe₂. *Nature* **2014**, *514*, 205-208.
- [8] Ribeiro, H. B.; Pimenta, M. A.; de Matos, C. J.; Moreira, R. L.; Rodin, A. S.; Zapata, J. D.; de Souza, E. A.; Castro Neto, A. H. Unusual angular dependence of the Raman response in black phosphorus. *ACS Nano* **2015**, *9*, 4270-4276.
- [9] Lu, W.; Ma, X.; Fei, Z.; Zhou, J.; Zhang, Z.; Jin, C.; Zhang, Z. Probing the anisotropic behaviors of black phosphorus by transmission electron microscopy, angular-dependent Raman spectra, and electronic transport measurements. *Appl. Phys. Lett.* **2015**, *107*, 021906.
- [10] Xia, F.; Wang, H.; Jia, Y. Rediscovering black phosphorus as an anisotropic layered material for optoelectronics and electronics. *Nat. Commun.* **2014**, *5*, 4458.
- [11] Chenet, D. A.; Aslan, O. B.; Huang, P. Y.; Fan, C.; van der Zande, A. M.; Heinz, T. F.; Hone, J. C. In-plane anisotropy in mono- and few-layer ReS₂ probed by Raman spectroscopy and scanning transmission electron microscopy. *Nano Lett.* **2015**, *15*, 5667-5672.
- [12] Liu, E.; Fu, Y.; Wang, Y.; Feng, Y.; Liu, H.; Wan, X.; Zhou, W.; Wang, B.; Shao, L.; Ho, C.-H. Integrated digital inverters based on two-dimensional anisotropic ReS₂ field-effect transistors. *Nat. Commun.* **2015**, *6*, 6991
- [13] Zhong, H.-X.; Gao, S.; Shi, J.-J.; Yang, L. Quasiparticle band gaps, excitonic effects, and anisotropic optical properties of the monolayer distorted 1T diamond-chain structures ReS₂ and ReSe₂. *Phys. Rev. B* **2015**, *92*, 115438.
- [14] Wolverson, D.; Crampin, S.; Kazemi, A. S.; Ilie, A.; Bending, S. J. Raman spectra of monolayer, few-layer, and bulk ReSe₂: an anisotropic layered semiconductor. *ACS Nano* **2014**, *8*, 11154-11164.
- [15] Hart, L.; Dale, S.; Hoye, S.; Webb, J. L.; Wolverson, D. Rhenium dichalcogenides: layered semiconductors with two vertical orientations. *Nano Lett.* **2016**, *16*, 1381-1386.
- [16] Lin, Y.-C.; Komsa, H.-P.; Yeh, C.-H.; Björkman, T. r.; Liang, Z.-Y.; Ho, C.-H.; Huang, Y.-S.; Chiu, P.-W.; Krasheninnikov, A. V.; Suenaga, K. Single-layer ReS₂: two-dimensional semiconductor with tunable in-plane anisotropy. *ACS Nano* **2015**, *9*, 11249-11257.
- [17] Abergel, D.; Russell, A.; Fal'ko, V. I. Visibility of graphene flakes on a dielectric substrate. *arXiv preprint arXiv:0705.0091* **2007**.
- [18] Benameur, M.; Radisavljevic, B.; Heron, J.; Sahoo, S.; Berger, H.; Kis, A. Visibility of dichalcogenide nanolayers. *Nanotechnology* **2011**, *22*, 125706.
- [19] Jung, I.; Pelton, M.; Piner, R.; Dikin, D. A.; Stankovich, S.; Watcharotone, S.; Hausner, M.; Ruoff, R. S. Simple approach for high-contrast optical imaging and characterization of graphene-based sheets. *Nano Lett.* **2007**, *7*, 3569-3575.
- [20] Casiraghi, C.; Hartschuh, A.; Lidorikis, E.; Qian, H.; Harutyunyan, H.; Gokus, T.; Novoselov, K.; Ferrari, A. Rayleigh imaging of graphene and graphene layers. *Nano Lett.* **2007**, *7*, 2711-2717.
- [21] Li, H.; Lu, G.; Yin, Z.; He, Q.; Li, H.; Zhang, Q.; Zhang, H. Optical identification of single - and few - layer MoS₂ sheets. *Small* **2012**, *8*, 682-686.
- [22] Blake, P.; Hill, E.; Neto, A. C.; Novoselov, K.; Jiang, D.; Yang, R.; Booth, T.; Geim, A. Making graphene visible. *Appl. Phys. Lett.* **2007**, *91*, 063124.
- [23] Ni, Z.; Wang, H.; Kasim, J.; Fan, H.; Yu, T.; Wu, Y.; Feng, Y.; Shen, Z. Graphene thickness determination using reflection and contrast spectroscopy. *Nano Lett.* **2007**, *7*, 2758-2763.
- [24] Yin, X.; Ye, Z.; Chenet, D. A.; Ye, Y.; O'Brien, K.; Hone, J. C.; Zhang, X. Edge nonlinear optics on a MoS₂ atomic monolayer. *Science* **2014**, *344*, 488-490.
- [25] Malard, L. M.; Alencar, T. V.; Barboza, A. P. M.; Mak, K. F.; de Paula, A. M. Observation of intense second harmonic

- generation from MoS₂ atomic crystals. *Phys. Rev. B* **2013**, *87*, 201401.
- [26] Zeng, H.; Liu, G.-B.; Dai, J.; Yan, Y.; Zhu, B.; He, R.; Xie, L.; Xu, S.; Chen, X.; Yao, W. Optical signature of symmetry variations and spin-valley coupling in atomically thin tungsten dichalcogenides. *Sci. Rep.* **2013**, *3*, 1608.
- [27] Kumar, N.; Najmaei, S.; Cui, Q.; Ceballos, F.; Ajayan, P. M.; Lou, J.; Zhao, H. Second harmonic microscopy of monolayer MoS₂. *Phys. Rev. B* **2013**, *87*, 161403.
- [28] Mak, K. F.; Lee, C.; Hone, J.; Shan, J.; Heinz, T. F. Atomically thin MoS₂: a new direct-gap semiconductor. *Phys. Rev. Lett.* **2010**, *105*, 136805.
- [29] Splendiani, A.; Sun, L.; Zhang, Y.; Li, T.; Kim, J.; Chim, C.-Y.; Galli, G.; Wang, F. Emerging photoluminescence in monolayer MoS₂. *Nano Lett.* **2010**, *10*, 1271-1275.
- [30] Ferrari, A. C.; Basko, D. M. Raman spectroscopy as a versatile tool for studying the properties of graphene. *Nat. Nanotechnol.* **2013**, *8*, 235-246.
- [31] Ferrari, A.; Meyer, J.; Scardaci, V.; Casiraghi, C.; Lazzeri, M.; Mauri, F.; Piscanec, S.; Jiang, D.; Novoselov, K.; Roth, S. Raman spectrum of graphene and graphene layers. *Phys. Rev. Lett.* **2006**, *97*, 187401.
- [32] Politano, A.; Chiarello, G.; Spinella, C. Plasmon spectroscopy of graphene and other two-dimensional materials with transmission electron microscopy. *Mater. Sci. in Semiconductor Processing* **2016**.
- [33] Pan, C.; Nair, R.; Bangert, U.; Ramasse, Q.; Jalil, R.; Zan, R.; Seabourne, C.; Scott, A. Nanoscale electron diffraction and plasmon spectroscopy of single- and few-layer boron nitride. *Phys. Rev. B* **2012**, *85*, 045440.
- [34] Odlyzko, M. L.; Mkhoyan, K. A. Identifying Hexagonal Boron Nitride Monolayers by Transmission Electron Microscopy. *Microscopy and Microanalysis* **2012**, *18*, 558-567.
- [35] Yamashita, S.; Koshiya, S.; Ishizuka, K.; Kimoto, K. Quantitative annular dark-field imaging of single-layer graphene. *Microscopy* **2015**, 409-418.
- [36] Zhou, W.; Zou, X.; Najmaei, S.; Liu, Z.; Shi, Y.; Kong, J.; Lou, J.; Ajayan, P. M.; Yakobson, B. I.; Idrobo, J.-C. Intrinsic Structural Defects in Monolayer Molybdenum Disulfide. *Nano Lett.* **2013**, *13*, 2615-2622.
- [37] Shevitski, B.; Mecklenburg, M.; Hubbard, W. A.; White, E.; Dawson, B.; Lodge, M.; Ishigami, M.; Regan, B. Dark-field transmission electron microscopy and the Debye-Waller factor of graphene. *Phys. Rev. B* **2013**, *87*, 045417.
- [38] Ping, J.; Fuhrer, M. S. Layer number and stacking sequence imaging of few-layer graphene by transmission electron microscopy. *Nano Lett.* **2012**, *12*, 4635-4641.
- [39] Meyer, J.; Geim, A.; Katsnelson, M.; Novoselov, K.; Obergfell, D.; Roth, S.; Girit, C.; Zettl, A. On the roughness of single- and bi-layer graphene membranes. *Solid State Commun.* **2007**, *143*, 101-109.
- [40] Kumar, P.; Agrawal, K. V.; Tsapatsis, M.; Mkhoyan, K. A. Quantification of thickness and wrinkling of exfoliated two-dimensional zeolite nanosheets. *Nat. Commun.* **2015**, *6*, 7128.
- [41] Brown, L.; Hovden, R.; Huang, P.; Wojcik, M.; Muller, D. A.; Park, J. Twinning and twisting of tri- and bilayer graphene. *Nano Lett.* **2012**, *12*, 1609-1615.
- [42] Wu, R. J.; Odlyzko, M. L.; Mkhoyan, K. A. Determining the thickness of atomically thin MoS₂ and WS₂ in the TEM. *Ultramicroscopy* **2014**, *147*, 8-20.
- [43] Brivio, J.; Alexander, D. T.; Kis, A. Ripples and layers in ultrathin MoS₂ membranes. *Nano Lett.* **2011**, *11*, 5148-5153.
- [44] Wang, Z.; Ning, S.; Fujita, T.; Hirata, A.; Chen, M. Unveiling three-dimensional stacking sequences of 1T phase MoS₂ monolayers by electron diffraction. *ACS Nano* **2016**, *10*, 10308-10316.
- [45] Peng, L. M. Electron atomic scattering factors and scattering potentials of crystals. *Micron* **1999**, *30*, 625-648.
- [46] Reimer, L. *Transmission Electron Microscopy: Physics of Image Formation and Microanalysis*; Springer, 2013.
- [47] Wang, Z.-l. *Elastic and Inelastic Scattering in Electron Diffraction and Imaging*; Springer Science & Business Media, 2013.
- [48] Koch, C. T. Determination of core structure periodicity and point defect density along dislocations. Ph.D. Dissertation, Arizona State University, 2002.

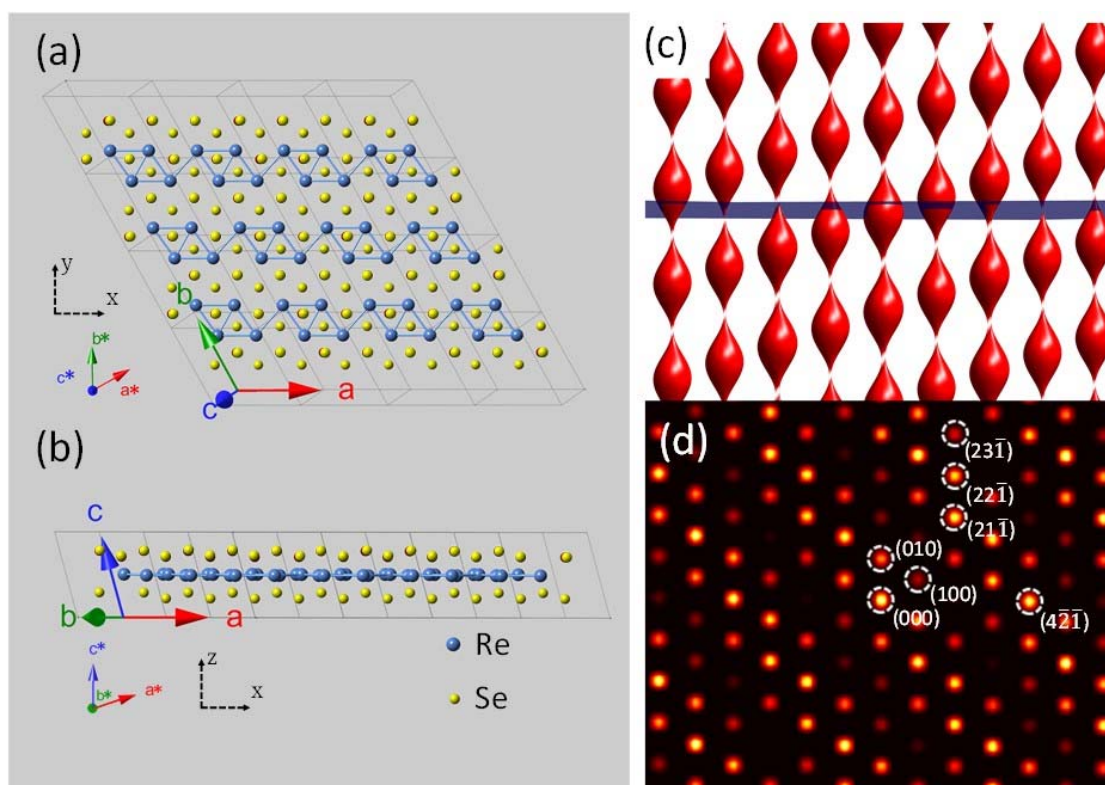


Figure 1 Structure of ReSe₂ in direct and reciprocal space: (a) Atomic structure viewed from z-direction in Cartesian coordinates, unit cell basis vectors are coded with different colors, and reciprocal unit cell basis vectors are indicated by superscripts stars. (b) Atomic structure viewed from y-direction. (c) Visualization of shape factors in reciprocal space for the bi-layer ReSe₂ crystal. (d) Distances of the nearest reciprocal lattice points with basal plane, the closer the point is from basal plane, the brighter the corresponding spot is.

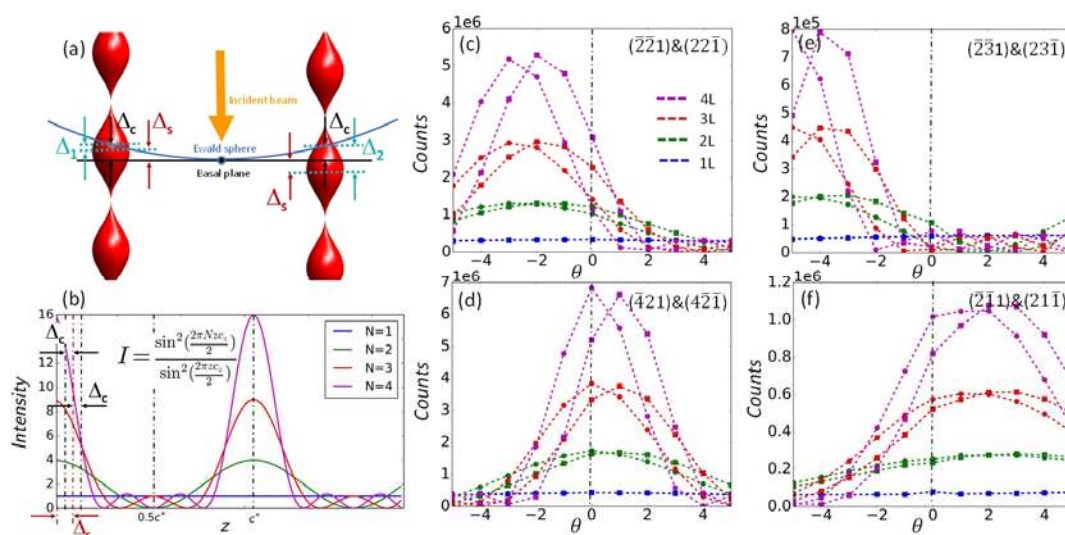


Figure 2 (a) Schematic description of the asymmetrical intersections between a pair of crystallographically equivalent shape factors and Ewald sphere. (b) Intensity modulation of shape factor in z-direction for different thicknesses, where c_z is the projection of \vec{c} onto z-axis. (c)-(f) Simulated intensity modulations with tilt-angle of selected Friedel pairs for different thicknesses, simulated diffraction patterns of (c), (e)&(f) are tilted around x-axis, while (d) is tilted around y-axis.

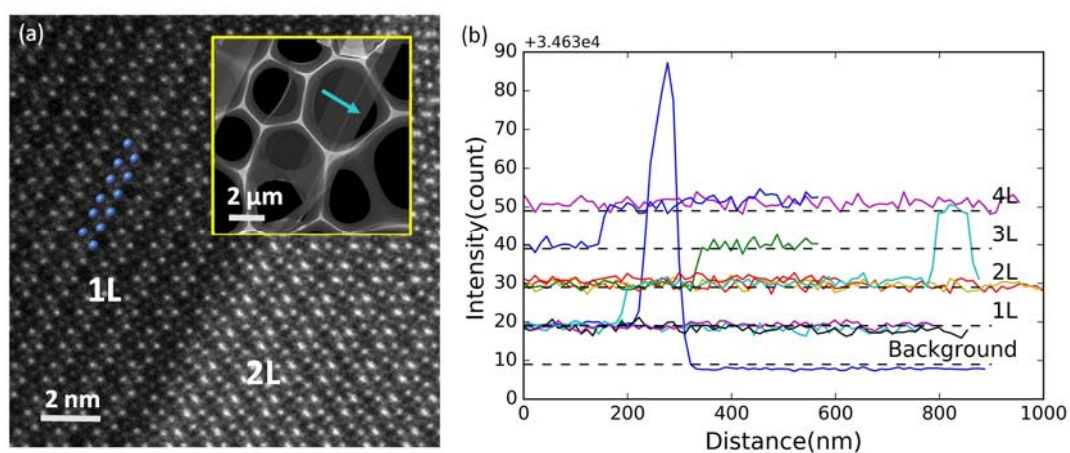


Figure 3 (a) Atomically resolved image of monolayer and bilayer ReSe₂, inset is the corresponding low-magnification ADF-STEM image. (b) Step-like intensity profiles for different thicknesses, the greenish line is extracted along the greenish arrow in the inset of (a).

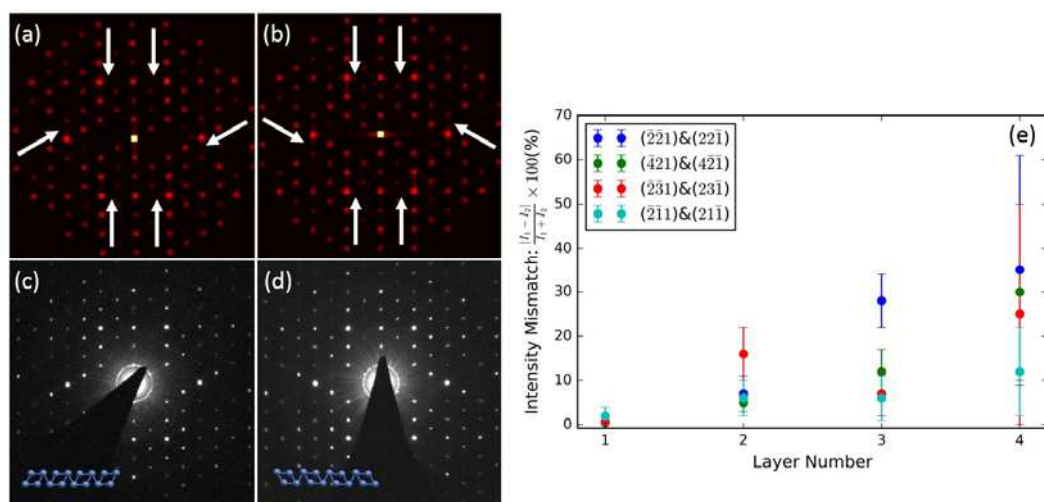


Figure 4 (a)&(b) Simulated electron diffraction patterns of monolayer ReSe₂ for upside and downside orientations respectively, white arrows indicate how intensity varies for better visual comparisons. (c)&(d) Experimental electron diffraction patterns of monolayer ReSe₂ for upside and downside orientations respectively. (e) Intensity mismatch of selected Friedel pairs from experimental electron diffraction patterns.