

This is a repository copy of *Universal Principles in the Repair of Communication Problems*.

White Rose Research Online URL for this paper:

<https://eprints.whiterose.ac.uk/116185/>

Version: Published Version

Article:

Dingemans, Mark, Roberts, Seán G., Baranova, Julija et al. (9 more authors) (2015)
Universal Principles in the Repair of Communication Problems. PLoS ONE. e0136100.
ISSN 1932-6203

<https://doi.org/10.1371/journal.pone.0136100>

Reuse

This article is distributed under the terms of the Creative Commons Attribution (CC BY) licence. This licence allows you to distribute, remix, tweak, and build upon the work, even commercially, as long as you credit the authors for the original work. More information and the full terms of the licence here:

<https://creativecommons.org/licenses/>

Takedown

If you consider content in White Rose Research Online to be in breach of UK law, please notify us by emailing eprints@whiterose.ac.uk including the URL of the record and the reason for the withdrawal request.

RESEARCH ARTICLE

Universal Principles in the Repair of Communication Problems

Mark Dingemans^{1*}, Seán G. Roberts¹, Julija Baranova¹, Joe Blythe², Paul Drew³, Simeon Floyd¹, Rosa S. Gisladdottir¹, Kobin H. Kendrick¹, Stephen C. Levinson^{1,4,5}, Elizabeth Manrique¹, Giovanni Rossi¹, N. J. Enfield^{1,5,6*}

1 Language & Cognition Department, Max Planck Institute for Psycholinguistics, Nijmegen, Netherlands, **2** School of Language and Linguistics, University of Melbourne, Melbourne, Australia, **3** Department of Social Sciences, Loughborough University, Loughborough, United Kingdom, **4** Radboud University, Nijmegen, Netherlands, **5** Donders Institute, PB 9104, Nijmegen, Netherlands, **6** Department of Linguistics, University of Sydney, Sydney, Australia

* mark.dingemans@mpi.nl (MD); nick.enfield@sydney.edu.au (NJE)



Abstract

There would be little adaptive value in a complex communication system like human language if there were no ways to detect and correct problems. A systematic comparison of conversation in a broad sample of the world's languages reveals a universal system for the real-time resolution of frequent breakdowns in communication. In a sample of 12 languages of 8 language families of varied typological profiles we find a system of 'other-initiated repair', where the recipient of an unclear message can signal trouble and the sender can repair the original message. We find that this system is frequently used (on average about once per 1.4 minutes in any language), and that it has detailed common properties, contrary to assumptions of radical cultural variation. Unrelated languages share the same three functionally distinct types of repair initiator for signalling problems and use them in the same kinds of contexts. People prefer to choose the type that is the most specific possible, a principle that minimizes cost both for the sender being asked to fix the problem and for the dyad as a social unit. Disruption to the conversation is kept to a minimum, with the two-utterance repair sequence being on average no longer than the single utterance which is being fixed. The findings, controlled for historical relationships, situation types and other dependencies, reveal the fundamentally cooperative nature of human communication and offer support for the pragmatic universals hypothesis: while languages may vary in the organization of grammar and meaning, key systems of language use may be largely similar across cultural groups. They also provide a fresh perspective on controversies about the core properties of language, by revealing a common infrastructure for social interaction which may be the universal bedrock upon which linguistic diversity rests.

OPEN ACCESS

Citation: Dingemans M, Roberts SG, Baranova J, Blythe J, Drew P, Floyd S, et al. (2015) Universal Principles in the Repair of Communication Problems. *PLoS ONE* 10(9): e0136100. doi:10.1371/journal.pone.0136100

Editor: Sonja Kotz, Max Planck Institute for Human Cognitive and Brain Sciences, GERMANY

Received: May 11, 2015

Accepted: July 29, 2015

Published: September 16, 2015

Copyright: © 2015 Dingemans et al. This is an open access article distributed under the terms of the [Creative Commons Attribution License](https://creativecommons.org/licenses/by/4.0/), which permits unrestricted use, distribution, and reproduction in any medium, provided the original author and source are credited.

Data Availability Statement: All relevant data are within the paper and its Supporting Information files ([S1–S6 Text](#), [S1 Data](#)).

Funding: This research was supported by ERC projects HSSLU (240853, to NJE) and INTERACT (269484, to SCL) and by the Max Planck Gesellschaft.

Competing Interests: The authors have declared that no competing interests exist.

Introduction

A design requirement for a communication system with complex, varying content, is that when communication fails there should be some mechanism to ‘repair’ it. This paper investigates a key system of communication repair found in the core ecological niche for language, conversation [1,2]. We compare conversation in 12 languages from 5 continents and find a robust system for the real-time resolution of breakdowns in communication. We find that this system of *other-initiated repair* is frequently used, that its basic structure is the same across languages, and that its principles of usage reveal the fundamentally cooperative nature of human communication.

In other-initiated repair, a recipient of a linguistic message signals that there is a problem understanding or hearing what was said, and the sender then ‘fixes’ it. Aspects of this system have been described for English [3–10], but no broad-ranging, systematic cross-cultural comparison has been made.

Comparative work is important for two reasons. First, methods for recovery from communication problems vary radically across species. Non-human animal communication systems feature re-doings, detection of unreliable signals, and failures of communication being allowed to stand or inferred later [11–14], but there appear to be few if any mechanisms for the interactive recognition and repair of breakdowns. If cross-cultural investigation revealed a basic set of mechanisms for interactive repair in human language, this would shed new light on human capacities for language, and provide a key point of comparison for the cross-species ethology of communication.

A second reason for systematic comparison is the common assumption of cross-cultural variation within our species: “While clarification is a universal activity, the manner in which clarification is accomplished varies crossculturally” [15,16]. Different languages may offer different ways to solve communication problems; or there may be a common toolbox of techniques, with not all languages using all of the tools. Work in interactional linguistics has suggested that in the domain of self-initiated repair, interactional practices are constrained by the syntactic organisation of a language [17]; this raises the question to what extent strategies for other-initiated repair may be language-specific. Yet there are also arguments in favour of a universal system. While languages may vary in fundamental ways, from sound systems to syntax to semantics [18,19], recent work has shown robust universal features in the basic infrastructure for social interaction, for instance the turn-taking system [20,21]. Likewise, practices of other-initiated repair may be so crucial to the organisation of social interaction and the achievement of joint goals that there remains little room for radical cross-cultural variation [1,2,22,23]. As one account proposes, “It is hard to imagine a society or culture whose organization of repair does not include a repair component, and one that works more or less like the one I have sketched” [1].

This generates two opposing hypotheses: a *pragmatic diversity hypothesis*, by which systems of language use reflect cultural differences and therefore may vary across cultural groups (implying or at least allowing universality in other areas of language such as grammar); and a *pragmatic universals hypothesis*, by which systems of language use are largely similar across cultural groups (allowing diversity in other areas of language) [23]. Here we test these opposing hypotheses in the domain of other-initiated repair. We also test the cross-linguistic generality of two existing proposals about repair. The first is an ordering of repair initiation techniques from ‘weak’ to ‘strong’ [3], according to which participants prefer more specific repair initiation techniques like ‘Who?’ over less specific ones like ‘Huh?’ when they can: the ‘strongest initiator rule’ [24]. The second is a principle of least collaborative effort, according to which the selection of repair initiation techniques would be done in such a way that it minimizes joint

work [24,25]. Both proposals have been put forward on the basis of English data; our cross-cultural study allows us to test whether they apply in conversation across languages.

Materials and Methods

We built video corpora of maximally informal social interaction from 12 languages of 8 language families spoken on 5 continents (Table 1). The languages vary fundamentally in typological profile (e.g., sound structure, word order, and grammatical systems), semiotic modality (spoken as well as signed), and societal setting (from small-scale peasant societies to large-scale post-industrial nations). Data were collected from consenting participants in accordance with protocols approved by the ethical review board of the Seventh EU Framework (240853 HSSLU). Consent procedures were adapted to local requirements following recommended practices in anthropology and linguistics [26,27] in a procedure approved by the ethical review board: written consent for literate participants, and audio-recorded verbal consent for non-literate participants, all archived with the conversational data. Data collection was limited to spontaneous, naturally occurring conversations between families and friends, following established methods for the collection and sampling of conversational data [21,28]. Participants often engaged in additional activities during these conversations (e.g., eating, playing games, preparing food), introducing variation which we use as a lever to gauge how factors like attention influence the signalling and resolution of communicative trouble.

Other-initiated repair is done in a question-and-answer type exchange that briefly disrupts the progress of an interaction. We focus on the following elements of this system and their relations to each other (Fig 1): REPAIR INITIATOR, a signal from speaker B of a problem with what speaker A just said, which A should fix; REPAIR SOLUTION, how the problem is fixed, e.g., by A repeating the trouble source turn or part of it, by specifying something that was vague or missing, or by confirming that a solution proposed by B was the right one; and REPAIR SEQUENCE, a side sequence [4] consisting of repair initiator and solution taken together. Throughout, B refers to the person initiating repair and A to the original speaker and provider of the repair solution.

We systematically sampled the conversations for occurrences of other-initiated repair, taking 10-minute segments from as many different interactions as possible to ensure against any

Table 1. Languages and researchers involved in this study.

Language	Language family	Location	Researcher
Cha'palaa	Barbacoan	Ecuador	Simeon Floyd
Dutch	IE (Germanic)	The Netherlands	Mark Dingemanse
English	IE (Germanic)	United Kingdom	Kobin H. Kendrick
Icelandic	IE (Germanic)	Iceland	Rósa S. Gísladóttir
Italian	IE (Romance)	Italy	Giovanni Rossi
Lao	Tai	Laos	N. J. Enfield
Argentine Sign Language (LSA)	Italian Sign Language	Argentina	Elizabeth Manrique
Mandarin	Sinitic	Taiwan	Kobin H. Kendrick
Murrinh-Patha	Southern Daly	Northern Australia	Joe Blythe
Russian	IE (Slavic)	Rusland	Julija Baranova
Siwu	Kwa	Ghana	Mark Dingemanse
Yéli Dnye	Isolate	Island Melanesia	Stephen C. Levinson

For each language, researchers collected, transcribed, and coded around 4 hours of spontaneous conversation, resulting in 50 hours of directly comparable corpus material.

doi:10.1371/journal.pone.0136100.t001

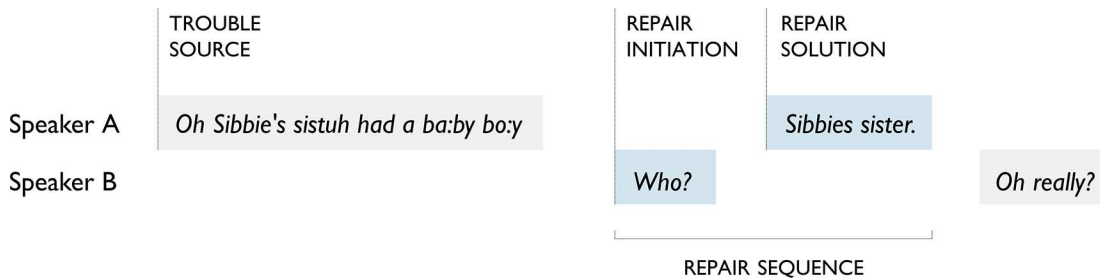


Fig 1. Elements of other-initiated repair. Repair sequences consist of a REPAIR INITIATOR that points back to a prior turn (TROUBLE SOURCE) and points forward to a next turn (REPAIR SOLUTION) [3].

doi:10.1371/journal.pone.0136100.g001

bias from over-representation of particular interactions or speakers. Based on close analysis of other-initiated repair sequences, a cross-linguistic coding scheme was developed and applied [29,30]. The coding scheme captured facts about linguistic resources (e.g., interjections, question markers, repetition, confirmation), conversational sequence (e.g., whether the repair initiation was the first or a subsequent attempt at resolving the trouble, whether the turn preceding the repair initiation was a question or an answer), and environmental and attentional factors (e.g., whether there was auditory or visual interference, whether B was involved in a parallel activity). To maximise coding consistency across the individual languages, all researchers participated in the development of the coding scheme and in the calibration of joint understanding of the coding categories. We checked coding reliability for all coders based on a common English dataset. For the quantitative analyses, we consider only variables that achieved a Krippendorff's α [31] of ≥ 0.66 or $\geq 75\%$ agreement (we use % agreement for variables that achieved low α values due to skewed distributions, the well-known 'high agreement, low consistency' paradox [32,33]). Two variables were recoded using a narrower coding instruction. In addition to the coded variables, our quantitative analyses use 13 automatically calculated measures like absolute and relative length of elements of the repair sequence, Levenshtein distances, source recording, language, language family, etc. (as detailed in S2 Text). Data were analysed using linear mixed effects models [34] for maximal statistical power, while controlling for historical relations between languages (Galton's problem [35]) and other dependencies and imbalances in the data. Examples of basic repair initiator types in all the languages are given in S1 Text. Details about data structure and models are provided in S2–S6 Texts. Reported statistics come from mixed effects model estimates unless otherwise noted.

Results

Our findings fall into two rubrics: the basic properties of the system and the principles of its use. Both are loci for potential cultural and linguistic variation.

Other-initiated repair is frequent

Other-initiated repair occurs in all of the languages in our sample. In the 48.5 exhaustively sampled hours of conversation we find 2053 cases, meaning that there is a repair initiation about once every 1.4 minutes across all languages. Counting only independent sequences, 95% of repair initiations happen within 4.13 minutes of the last one (Fig 2)—in other words, on average, no five minutes go by in any of the languages without there being a sequence of other-initiated repair. This shows that repair is a fundamental and frequent feature of conversation everywhere.

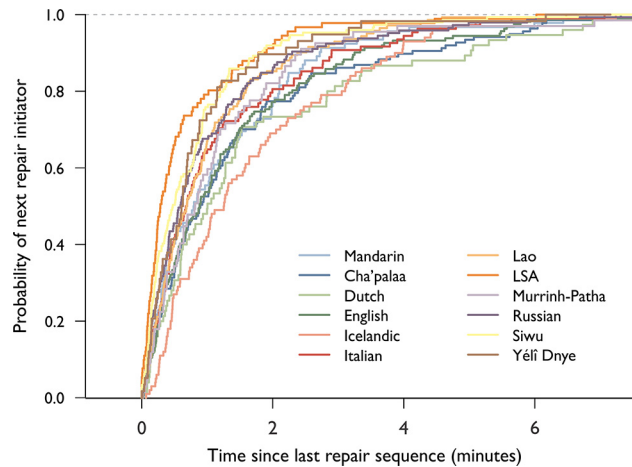


Fig 2. The frequency of repair. Empirical density curve showing the proportion of independent repair initiations encountered after a given amount of time has elapsed since the last one. The vast majority of repair initiations happen within 5 minutes of each other.

doi:10.1371/journal.pone.0136100.g002

All languages share three basic types of repair initiator

Three main practices for repair initiation recur across all of the languages in our sample: (I) OPEN REQUEST signals a problem with the trouble source while leaving open where or what it is, and requests clarification (example: ‘Huh?’); (II) RESTRICTED REQUEST requests specification or clarification of a specific component of the trouble source (example: ‘Who?’); (III) RESTRICTED OFFER offers a candidate for what was just said and asks for confirmation (example: ‘she had a boy?’) [29]. These repair initiator types go from least specific (open request) to most specific (restricted offer) in terms of the amount of information they contain about the communicative trouble and the possible solution. They differ in terms of how the repair initiator targets trouble in the prior turn (open vs. restricted [6]) and what kind of response is relevant in the next turn (request vs. offer [36]).

In each of the languages, the three basic types make up the vast majority of cases of other-initiated repair (mean 92% σ 4.5%), and they are implemented using similar linguistic resources: interjections, question markers, prosody, and repetition [37,38] (see S1 Text for examples). Repetition in particular is common in repair initiators: across all languages, 48.3% of repair initiator tokens feature partial (42.6%) or full (5.7%) repetition of the trouble source turn, pointing to the importance of other-initiated repair as a mechanism for achieving interactive alignment [39–42]. We measured the length of repair initiators in orthographic characters, a commonly used measure [43] which is highly correlated with length in phonemes and with turn duration (S6 Text). The three types of repair initiator differ in their mean lengths: open = 3.7, restricted request = 10.4, restricted offer = 13.0. The differences between these lengths correlate with other elements of the repair sequence in ways that are not statistically different across the languages (S3 Text); for instance, the length of the repair solution relative to the trouble source differs significantly by repair initiator type, as shown below. Basic types may be combined into more complex formats (8% of cases across all languages), and language-specific details may offer special affordances for initiating repair [29,44,45], yet the cross-linguistic diversity appears to be constrained by universal dimensions of the system uncovered here.

In sum, all of the languages in our sample share a basic inventory of techniques to initiate repair, and the three basic types differ from each other formally in similar ways across the languages in our sample.

Basic types behave the same

Each type of repair initiator can be thought of as inviting a repair solution that carries out a distinct kind of *operation* by the original speaker on the trouble source turn. According to qualitative studies of other-initiated repair, for open request type the canonical operation involves repetition, for restricted offer type it is a confirmation—e.g., ‘Yeah’—and for restricted request type it may be repetition or clarification [3,6,46,47]. This predicts measurable differences in the relative length of repair solutions: longest for open request, shortest for restricted offer, and in between for restricted request type. We found that the average length of the repair solution relative to the trouble source decreases as the repair initiator goes from open type to restricted request type to restricted offer type ($\chi^2 = 50.7$, $p < 0.00001$). This pattern does not differ significantly across languages (S2 Text).

In sum, repair initiator types acts as an ‘instruction’ for the repair solution in ways that are similar across languages, and they can be ordered OPEN REQUEST < RESTRICTED REQUEST < RESTRICTED OFFER in terms of how the repair solution differs from the trouble source.

The above findings show that the basic properties of the system for other-initiated of repair are similar across the languages in our sample. We now consider whether there might be cross-cultural variation in when and how people use these practices.

Specificity principle

When people initiate repair, they must choose from among less or more specific types of repair initiator. This choice could be culturally variable or more universally systematic. We first try to determine the conditions of usage of the open repair initiator. We hypothesized that open type repair initiators (such as ‘Huh?’ and ‘Sorry?’) are most likely in contexts that are particularly prone to trouble in hearing or processing what someone just said or signed [6,24,48]. These *trouble-prone contexts* were coded for in each repair sequence in terms of interference to the signal (noise or overlap), distractions to B’s attention (parallel activity), and status of the trouble source turn as an answer versus a question (answers being easier to anticipate and thus easier to process).

We find that in all the languages, trouble prone contexts make open type initiators more likely ($\chi^2 = 1266.4$, $df = 101$ $p < 0.000001$; S2 Text). When all three measures of trouble-prone contexts obtain, the relative probability of an open repair initiator approaches 1 in all of the languages (Fig 3). The probability that an open type is used rather than a restricted type is not affected by other variables such as speaker or recipient gaze, modality of the language being spoken, or controlled nature of the conversational setting. While languages may vary in the relative frequency with which their speakers use open type versus restricted type repair initiators (S2 Text), we find that the same contexts affect the relative probability in the same way across all languages, painting a picture of potential diversity constrained by universal principles.

The estimated probability of an open type repair initiator (P_{open}) in non-trouble-prone contexts is 39% (S2 Text). Open type repair initiators are significantly more likely to be used if (a) there is *noise interference* during the trouble source turn ($P_{\text{open}} = 78\%$, $p < 0.0001$); if (b) there is *overlap interference* during the trouble source turn ($P_{\text{open}} = 76\%$, $p < 0.0001$); or if (c) B is in a *parallel activity* during the trouble source turn ($P_{\text{open}} = 76\%$, $p < 0.0001$). Open type repair initiators are *less* likely to be used if (d) trouble source is an *answer as opposed to a question* ($P_{\text{open}} = 9\%$, $p < 0.0001$); or if (e) there is *intervening material* between the trouble source and the repair initiation ($P_{\text{open}} = 16\%$, $p < 0.0001$); or if (f) the *trouble source is relatively long* ($P_{\text{open}} = 31\%$, $p < 0.0001$). The lower likelihood in (e,f) may be due to the fact that open repair initiators normally rely on contiguity to the prior turn to signal trouble [4,49] (and see S2 Text), and to the recipient having potentially had more time to process prior talk.

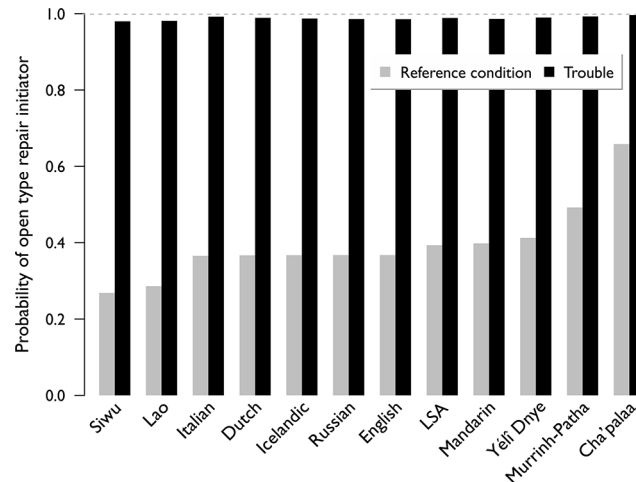


Fig 3. The probability of Open repair initiators in different conditions. Model estimates of the probability of Open repair initiator in reference condition (grey) versus when all three measures of trouble-prone contexts are true (black). In the latter case, probability of an Open repair initiator approaches 1 in all of the languages.

doi:10.1371/journal.pone.0136100.g003

Earlier observations based on English have shown that when other-initiated repair does not immediately lead to a satisfactory solution but instead goes another round, people tend to become more specific in their subsequent choice of repair initiator [3,24]. We looked at complex sequences that feature multiple subsequent attempts at repair initiation and confirm that this tendency holds across all the languages in our sample: there was a significant interaction between the status of a repair initiator as first versus subsequent in complex sequences and the previous repair initiator type (S2 Text). Within these complex sequences, the probability of using an open type repair initiator decreases if the previous initiator was open type ($P_{open} = 17.4\%$, $z = 2.78$, $p = 0.0054$) or restricted ($P_{open} = 19.9\%$, $z = 2.9$, $p = 0.0043$). No other factors significantly affected the likelihood that one type of repair initiator would be chosen over another.

The findings so far point to a common principle of SPECIFICITY: people choose the most specific repair initiator possible, and the choice is affected by the same kinds of factors in the same way. This is a non-trivial result: the locally egocentric behaviour for a person performing other-initiated repair would be to choose the simplest form possible (e.g., ‘huh?’) and let the other do most of the work. The principle of specificity is in line with the ‘strongest initiator rule’ and with the orientation to minimise collaborative effort known from work in the psychology of dialogue [50,51], and reveals an element of altruism in how people initiate repair in conversation. We now consider the consequences of initiating repair in terms of cost and division of labour for the participants.

Conservation principle

When repair is initiated, part or whole of the trouble source turn is effectively lost due to the communicative trouble, and must be recovered in the repair sequence. What is the cost of these momentary disruptions to the progression of the conversation?

We operationalized a measure of conservation as the ratio of the length of the trouble source (spoken by A alone) compared to the length of the repair sequence (repair initiator plus repair solution, spoken by B and A taken together—see Fig 1). Given that this measure compares the length of a single turn with the length of a two-turn sequence, a null hypothesis would be that

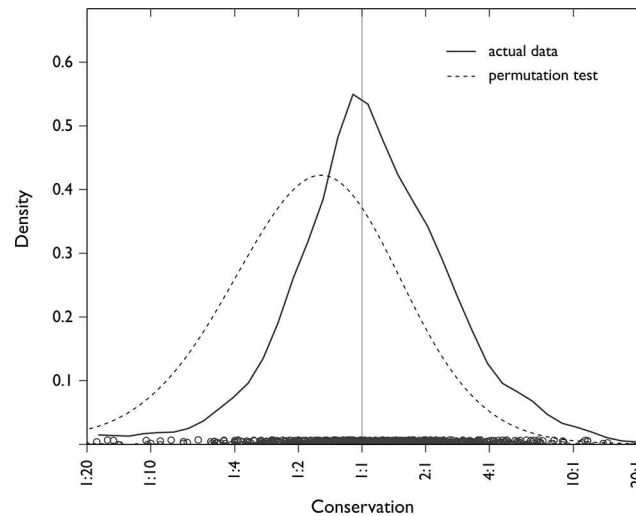


Fig 4. Conservation principle. Density plot of actual conservation ratios of each case in the data set (black line), with an average near 1:1; and of conservation ratios from a permutation test using randomly chosen trouble source turns (grey line), with an average of 1:1.7, closer to a null hypothesis for conservation (simulation and further explanation in [S4 Text](#)). On average, the length of the two-turn repair sequence matches the length of the trouble source turn.

doi:10.1371/journal.pone.0136100.g004

the ratio should be 1:2. But in fact, it is much closer to 1:1: on average, for independent repair sequences, the length of the two-turn repair sequence is about the same as the length of the one-turn trouble source turn (model estimate 1.2:1, 95% confidence intervals = 1.02:1, 1.47:1). This is significantly closer to 1:1 than would be expected by chance as assessed by a permutation test, ($p < 0.0001$, [Fig 4](#) and [S4 Text](#)), and it is invariant across languages and across repair initiator types.

This is evidence for a principle of CONSERVATION: the shared cost of repair is no more than the lone cost incurred in the trouble source turn. In effect, this is achieved by participants doing joint work to preserve content and form where possible. For instance, in a trouble-prone context, B may have little choice but to use an open repair initiator (e.g., ‘Huh?’), and the canonical response is then for A to repeat the turn in full. In contrast, a restricted repair initiator (e.g., ‘Who?’) communicates grasp of everything that was said except the problematic part; just this part is then supplied in the repair solution (e.g., ‘Sibbie’s sister’ in [Fig 1](#)). This is another example of the principle of least collaborative effort, and its effect is that repair sequences are efficient and cost-conserving.

Division of labour principle

In other-initiated repair, a repair sequence taken as a whole constitutes the complete signalling and resolution of the communication problem at hand. How is the labour divided across participants? We measured the length of the repair sequences in our corpus, and the relative contributions by A and B to each sequence. We found that repair initiator type predicts the proportional cost that B pays ($\chi^2(2) = 74.4$, $p < 0.0000001$, model comparison: log likelihood difference = 10.4, $\chi^2(2) = 20.9$, $p = 0.00003$). This was invariant across languages (log likelihood difference = 5.4, $\chi^2 = 10.85$, $df = 17$, $p = 0.86$). The trend is the same for all languages: B pays more of the cost as the repair initiators become more specific, from open request to restricted request to restricted offer. This is shown by the estimated mean division of labour patterns for each language ([Fig 5](#) and [S5 Text](#)).

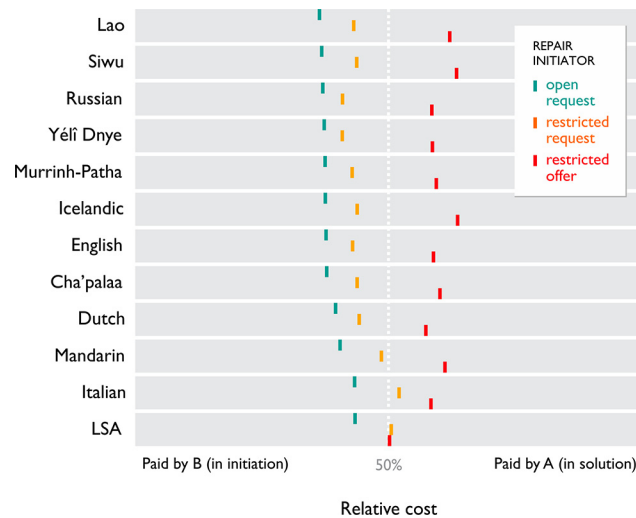


Fig 5. Division of labour in repair sequences. Estimated average relative costs paid by B (left of mark) and A (right of mark) for different repair initiator types are similar in each language. B pays more of the cost as repair initiators become more specific.

doi:10.1371/journal.pone.0136100.g005

The data support a principle of *DIVISION OF LABOUR*: across languages, the cost of doing repair is shared by B and A in a way that is predicted by the type of repair initiator. This provides additional support for the finding that the three basic repair initiator types behave the same across languages. Since the repair initiator is chosen by participant B according to the principle of specificity, the effect is that B pays as much of the cost as B can. Thus, B's displays altruistic behaviour in selecting the most specific repair initiator possible leads to minimal joint cost.

Discussion

Our findings offer support for the pragmatic universals hypothesis: while languages may vary in the organization of grammar and meaning, key systems of language use may be largely similar across cultural groups. The pragmatic universals we have found reveal remarkable unity where prior work proposed cultural diversity, and provide robust cross-cultural support for proposals hitherto founded only on English data [3,24]. In particular, our results provide a strong empirical verification of the cross-cultural relevance of the strongest initiator rule and the principle of least collaborative effort in conversation [24,50]. The sheer frequency of other-initiated repair (about once every 1.4 minutes across all the languages) brings home the fundamental importance of this system to human communication. The properties of the system (with three basic types accounting for the vast majority of repair initiations across languages) uncover linguistic universals of a kind not described before. The three principles of specificity, conservation, and division of labour reveal a common element of prosociality underlying the operation of the repair system in all of the languages.

Although methods to recover from breakdowns may seem essential to any communication system, things could have been otherwise. In many animal communication systems, robustness in the face of signal unreliability is provided by such properties as redundancy, multi-modality, repetition, and exaggerated or costly signals [52,53,13], all features also found in human language. Yet no other animal communication system appears to offer the kind of mechanisms for the interactive resolution of trouble we find in other-initiated repair. Our finding that it is a core feature of all 12 languages in our sample thus constitutes a substantial universal of human

language, and points to the uniquely human sociality that underlies it. Another sense in which things could have been otherwise is in the distribution and use of strategies for the other-initiation of repair. It is conceivable that there are languages in which speakers use a form like 'Huh?' exclusively, eschewing more specific alternatives, perhaps similar to the situation in which some languages lack counting words beyond 'one', 'two', and 'many' [54]. Yet we haven't found such a language; we find instead that the three basic types—open request, restricted request, and restricted offer—are used in the same situations across all the languages in our sample, showing remarkable convergence in systems of language usage and again pointing to the cooperative properties of human communication.

Our findings are based on conversation, the core ecological niche for language. As such, they provide a baseline for future work on the specifics of the repair system in different settings and societies. Corpus-based studies can build on them to investigate how different communicative settings may deploy variations of the basic system [55,56], and studies of language development can examine how and in which order children across cultures master the basic types of repair initiators [57,58]. The findings also provide an impetus for experimental work on the social and contextual factors involved in repair [59,60], and for modelling work on the theoretical aspects of achieving mutual understanding [61,62]. Finally, they provide a point of reference for cross-species ethological studies of mechanisms for repairing communicative breakdowns.

Language is a form of animal behaviour, and so, one might argue, it should be studied using the tried and tested methods of ethology [63–65]: starting with the systematic field observation of natural behaviour to establish the facts, then moving to well-designed experiments, and iterating this process to refine models and theories. Curiously, over the last 50 years, observations of natural behaviour have played little role in the discipline of linguistics, due in large part to an overly narrow conception of language as the mental competence for generating sentences [66,67]. Here we have shown that the systematic observation of language usage reveals complex phenomena such as repair that are clearly fundamental to human language, and that are tied to our uniquely human sociality.

The system for other-initiated repair described here is particularly significant for showcasing three core elements essential to human language. The first element is the property of self-referentiality (or reflexivity) in signalling: the possibility of a communication system being used not only for communicating about objects and entities in the physical world, but also for communicating about itself. Repair initiators like *Huh?*, *What did you say?*, *Who?*, *You mean John?*, as well as those repeating all or part of the prior turn, are specifically designed for drawing attention to particular elements of the communication system as it is used. Self-referentiality is a hallmark of human language [68–70], and its concrete and common use in other-initiated repair may well provide one of the main drivers behind its adaptive value in natural language.

The second element is our species' possession of a full-blown theory of mind [71,72]: a degree of social intelligence that allows and motivates individuals to finely monitor discrepancies in states of knowledge and understanding between self and others. Conversational repair is one of the places where speakers' theories of mind come to the surface [73], and the mechanisms of other-initiated repair offer a universally shared set of tools for the interactive achievement of mutual understanding. Third is our species' unique capacity for cooperative and collaborative action [74,75], whereby two or more individuals can jointly commit to a shared course of behaviour, being thereby morally accountable for the success of that course of behaviour. We see these prosocial motives in action in the sequences of other-initiated repair, insofar as these sequences would not be possible without (i) fully-fledged cooperation, (ii) a willingness to delay current line of joint action and assist the other party, and (iii) a capacity to suspend and then resume the current line of action (which requires inhibiting current goals and

stacking reasons for action). The cross-culturally common properties of other-initiated repair make it one of the most vivid demonstrations of the ultrasocial nature of humans [76,77].

Conclusions

We have shown strong and systematic similarities in the properties and principles of use of a system for other-initiated repair in a diverse sample of languages, controlling for situation types, historical relationships and a range of other variables. While linguistic details of repair initiators can vary from language to language, both the general shape of the system and its principles of use in informal conversation are strongly similar across different languages, suggesting that we are tapping into the very infrastructure for social interaction [2]. These findings direct our attention to the fundamentally social nature of language. Contrary to common expectations in theoretical linguistics about the chaotic and degenerate nature of language usage [66,67], we find strong regularity and normativity in conversation, down to the level of how problems are signalled and solved.

The possibility of a universal system for other-initiated repair is important for current controversies about the essence of human language [78–80]. While those debates have focused on word- and sentence-level features like sound systems and grammatical structures, here we propose language universals in the patterns of conversation. This presents an opportunity for progress in answering the question: If language is universally and quintessentially human, what is at its core? The repair system we observe is one of the crucial safeguarding mechanisms for coherence in social interaction. It exhibits and exploits three elements that are crucial to human language and arguably unique to our species: self-referentiality, social intelligence, and collaborative action. If there is a universal core to language, these are the kinds of things it is made of.

Supporting Information

S1 Data. Dataset underlying the findings.

(CSV)

S1 Text. Repair sequences and initiator types.

(PDF)

S2 Text. Main model: Open and Restricted repair initiators.

(PDF)

S3 Text. Operation model.

(PDF)

S4 Text. Conservation model.

(PDF)

S5 Text. Division of labour model.

(PDF)

S6 Text. Estimating utterance length.

(PDF)

Author Contributions

Conceived and designed the experiments: MD J. Baranova J. Blythe PD SF RSG KHK SCL EM GR NJE. Performed the experiments: MD J. Baranova J. Blythe SF RSG KHK SCL EM GR NJE.

Contributed reagents/materials/analysis tools: SGR MD J. Baranova J. Blythe PD SF. Wrote the paper: MD NJE SGR SCL. Carried out field work, corpus collection, transcription, translation, and data collection: MD J. Baranova J. Blythe SF RSG KHK SCL EM GR NJE; Participated in primary data analysis and formulation of design of the coding: MD J. Baranova J. Blythe PD SF RSG KHK SCL EM GR NJE; Designed and wrote the coding scheme: MD KHK NJE; Oversaw coding reliability: MD KHK; Oversaw data collection and did data analysis: MD; Did mixed effects modeling and statistics: SGR; Coordinated the project: MD NJE.

References

1. Schegloff E. A. 2006 Interaction: The Infrastructure for Social Institutions, the Natural Ecological Niche for Language, and the Arena in which Culture is Enacted. In *Roots of human sociality: Culture, cognition, and human interaction* (eds Enfield N. J. & Levinson S. C.), pp. 70–96. Oxford: Berg.
2. Levinson S. C. 2006 On The Human 'Interaction Engine'. In *Roots of human sociality: Culture, cognition, and human interaction* (eds Enfield N. J. & Levinson S. C.), pp. 39–69. Oxford: Berg.
3. Schegloff E. A., Jefferson G. & Sacks H. 1977 The Preference for Self-Correction in the Organization of Repair in Conversation. *Language* 53, 361–382.
4. Jefferson G. 1972 Side sequences. In *Studies in Social Interaction* (ed Sudnow D. N.), pp. 294–338. New York: MacMillan/The Free Press.
5. Schegloff E. A. 1993 Reflections on Quantification in the Study of Conversation. *Res. on Language & Social Interaction* 26, 99–128. (doi: [10.1207/s15327973rlsi2601_5](https://doi.org/10.1207/s15327973rlsi2601_5))
6. Drew P. 1997 'Open' class repair initiators in response to sequential sources of trouble in conversation. *Journal of Pragmatics* 28, 69–101.
7. Schegloff E. A. 2000 When 'others' initiate repair. *Applied Linguistics* 21, 205–243. (doi: [10.1093/applin/21.2.205](https://doi.org/10.1093/applin/21.2.205))
8. Robinson J. D. 2006 Managing Trouble Responsibility and Relationships During Conversational Repair. *Communication Monographs* 73, 137–161. (doi: [10.1080/03637750600581206](https://doi.org/10.1080/03637750600581206))
9. Benjamin, T. 2013 Signaling trouble: On the linguistic design of other-initiation of repair in English Conversation.
10. Kendrick K. H. 2015 Other-initiated repair in English. *Open Linguistics* 1, 164–190. (doi: [10.2478/opli-2014-0009](https://doi.org/10.2478/opli-2014-0009))
11. Haimoff E. H. 1988 The organization of repair in the songs of gibbons. *Semiotica* 68, 89–120. (doi: [10.1515/semi.1988.68.1-2.89](https://doi.org/10.1515/semi.1988.68.1-2.89))
12. Cheney D. L. & Seyfarth R. M. 1988 Assessment of meaning and the detection of unreliable signals by vervet monkeys. *Animal Behaviour* 36, 477–486. (doi: [10.1016/S0003-3472\(88\)80018-6](https://doi.org/10.1016/S0003-3472(88)80018-6))
13. Wiley R. H. 1994 Errors, exaggeration, and deception in animal communication. In *Behavioral mechanisms in evolutionary ecology* (ed Real L.), pp. 157–189. Chicago: University Of Chicago Press.
14. Carazo P. & Font E. 2014 'Communication breakdown': the evolution of signal unreliability and deception. *Animal Behaviour* 87, 17–22. (doi: [10.1016/j.anbehav.2013.10.027](https://doi.org/10.1016/j.anbehav.2013.10.027))
15. Ochs E. 1984 Clarification and culture. In *GURT'84: Meaning, Form, and Use in Context: Linguistic Applications* (ed Schiffrin D.), Washington, D.C.: Georgetown University Press.
16. Wierzbicka A. 1991 *Cross-cultural pragmatics: the semantics of human interaction*. Berlin/New York: Mouton de Gruyter.
17. Fox B. A., Hayashi M. & Jasperson R. 1996 Resources and repair: a cross-linguistic study of syntax and repair. In *Interaction and Grammar* (eds Ochs E. Schegloff E. A. & Thompson S. A.), pp. 185–237. Cambridge: Cambridge University Press.
18. Croft W. 2001 *Radical Construction Grammar*. Oxford: Oxford University Press.
19. Bickel B. 2014 Linguistic diversity and universals. In *Cambridge Handbook of Linguistic Anthropology* (eds Enfield N. J. Kockelman P. & Sidnell J.), Cambridge: Cambridge University Press.
20. Sacks H., Schegloff E. A. & Jefferson G. 1974 A Simplest Systematics for the Organization of Turn-Taking for Conversation. *Language* 50, 696–735.
21. Stivers T., Enfield N.J., Brown P., Englert C., Hayashi M., Heinemann T., et al. 2009 Universals and cultural variation in turn-taking in conversation. *Proceedings of the National Academy of Sciences* 106, 10587–10592. (doi: [10.1073/pnas.0903616106](https://doi.org/10.1073/pnas.0903616106))

22. Dingemanse M. & Floyd S. 2014 Conversation across cultures. In *Cambridge Handbook of Linguistic Anthropology* (eds Enfield N. J. Kockelman P. & Sidnell J.), pp. 434–464. Cambridge: Cambridge University Press.
23. Levinson S. C. 2000 *Presumptive Meanings: The Theory of Generalized Conversational Implicature*. MIT Press.
24. Clark H. H. & Schaefer E. 1987 Collaborating on contributions to conversations. *Language & Cognitive Processes* 2, 19–41. (doi: [10.1080/01690968708406350](https://doi.org/10.1080/01690968708406350))
25. Clark H. H. & Brennan S. E. 1991 Grounding in communication. In *Perspectives on Socially Shared Cognition* (eds Resnick L. B. Levine J. M. & Teasley S. D.), pp. 127–149. Washington: APA Books.
26. American Anthropological Association 2004 American Anthropological Association Statement on Ethnography and Institutional Review Boards.
27. Linguistic Society of America 2009 Linguistic Society of America Ethics Statement.
28. San Roque L., Kendrick K. H., Norcliffe E., Brown P., Defina R., Dingemanse M., et al. 2015 Vision verbs dominate in conversation across cultures, but the ranking of non-visual verbs varies. *Cognitive Linguistics* (doi: [10.1515/cog-2014-0089](https://doi.org/10.1515/cog-2014-0089))
29. Dingemanse M. & Enfield N. J. 2015 Other-initiated repair across languages: towards a typology of conversational structures. *Open Linguistics* 1, 98–118. (doi: [10.2478/opli-2014-0007](https://doi.org/10.2478/opli-2014-0007))
30. Dingemanse M., Kendrick K. H. & Enfield N. J. in press A coding scheme for other-initiated repair across languages. *Open Linguistics* 1.
31. Hayes A. F. & Krippendorff K. 2007 Answering the Call for a Standard Reliability Measure for Coding Data. *Communication Methods and Measures* 1, 77–89. (doi: [10.1080/19312450709336664](https://doi.org/10.1080/19312450709336664))
32. Feinstein A. R. & Cicchetti D. V. 1990 High agreement but low Kappa: I. the problems of two paradoxes. *Journal of Clinical Epidemiology* 43, 543–549. (doi: [10.1016/0895-4356\(90\)90158-L](https://doi.org/10.1016/0895-4356(90)90158-L))
33. Feng G. C. 2013 Intercoder reliability indices: disuse, misuse, and abuse. *Qual Quant* 48, 1803–1815. (doi: [10.1007/s11135-013-9956-8](https://doi.org/10.1007/s11135-013-9956-8))
34. Baayen R. H., Davidson D. J. & Bates D. M. 2008 Mixed-effects modeling with crossed random effects for subjects and items. *Journal of Memory and Language* 59, 390–412. (doi: [10.1016/j.jml.2007.12.005](https://doi.org/10.1016/j.jml.2007.12.005))
35. Tylor E. B. 1889 On a Method of Investigating the Development of Institutions; Applied to Laws of Marriage and Descent. *The Journal of the Anthropological Institute of Great Britain and Ireland* 18, 245–272. (doi: [10.2307/2842423](https://doi.org/10.2307/2842423))
36. Schegloff E. A. 2004 On dispensability. *Research on Language & Social Interaction* 37, 95–149.
37. Dingemanse M., Torreira F. & Enfield N. J. 2013 Is ‘Huh?’ a universal word? Conversational infrastructure and the convergent evolution of linguistic items. *PLOS ONE* (doi: [10.1371/journal.pone.0078273](https://doi.org/10.1371/journal.pone.0078273))
38. Dingemanse M., Blythe J. & Dirksmeyer T. 2014 Formats for other-initiation of repair across languages: An exercise in pragmatic typology. *Studies in Language* 38, 5–43. (doi: [10.1075/sl.38.1.01din](https://doi.org/10.1075/sl.38.1.01din))
39. Schegloff E. A. 1992 Repair After Next Turn: The Last Structurally Provided Defense of Intersubjectivity in Conversation. *The American Journal of Sociology* 97, 1295–1345.
40. Pickering M. J. & Garrod S. 2004 Toward a Mechanistic Psychology of Dialogue. *Behavioral and Brain Sciences* 27, 169–190. (doi: [10.1017/S0140525X04000056](https://doi.org/10.1017/S0140525X04000056))
41. Schegloff E. A. 2004 Putting the interaction back into dialogue. *Behavioral and Brain Sciences* 27, 207–208. (doi: [10.1017/S0140525X04320054](https://doi.org/10.1017/S0140525X04320054))
42. Mills, G. J. & Healey, P. G. T. 2008 Semantic negotiation in dialogue: the mechanisms of alignment. *Proceedings of the 8th SIGdial, Columbus, OH, US*
43. Piantadosi S. T., Tily H. & Gibson E. 2011 Word lengths are optimized for efficient communication. *Proceedings of the National Academy of Sciences* 108, 3526–3529. (doi: [10.1073/pnas.1012551108](https://doi.org/10.1073/pnas.1012551108))
44. Hayashi M. & Kim H. R. S. 2013 Turn formats for other-initiated repair and their relation to trouble sources: Some observations from Japanese and Korean conversations. *Journal of Pragmatics* (doi: [10.1016/j.pragma.2013.11.014](https://doi.org/10.1016/j.pragma.2013.11.014))
45. Sidnell J. & Enfield N. J. 2012 Language Diversity and Social Action. *Current Anthropology* 53, 302–333. (doi: [10.1086/665697](https://doi.org/10.1086/665697))
46. Schegloff E. A. 1997 Practices and actions: Boundary cases of other-initiated repair. *Discourse Processes* 23, 499–545. (doi: [10.1080/01638539709545001](https://doi.org/10.1080/01638539709545001))
47. Curl T. S. 2005 Practices in Other-Initiated Repair Resolution: The Phonetic Differentiation of ‘Repetitions’. *Discourse Processes* 39, 1–43. (doi: [10.1207/s15326950dp3901_1](https://doi.org/10.1207/s15326950dp3901_1))
48. Selting M. 1987 Reparaturen und lokale Verstehensprobleme. Oder: Zur Binnenstruktur von Reparatursequenzen. *Linguistische Berichte* 108, 128–149.

49. Benjamin T. 2012 When Problems Pass Us By: Using 'You Mean' to Help Locate the Source of Trouble. *Research on Language & Social Interaction* 45, 82–109. (doi: [10.1080/08351813.2012.646742](https://doi.org/10.1080/08351813.2012.646742))
50. Clark H. H. & Wilkes-Gibbs D. 1986 Referring as a collaborative process. *Cognition* 22, 1–39. (16/0010-0277(86)90010-7)
51. Clark H. H. & Schaefer E. F. 1989 Contributing to discourse. *Cognitive Science* 13, 259–294. (16/0364-0213(89)90008-6)
52. Arbib M. A., Liebal K. & Pika S. 2008 Primate Vocalization, Gesture, and the Evolution of Human Language. *Current Anthropology* 49, 1053–1076. (doi: [10.1086/593015](https://doi.org/10.1086/593015))
53. Liebal K. 2013 *Primate communication: A Multimodal Approach*. New York: Cambridge University Press.
54. Gordon P. 2004 Numerical Cognition Without Words: Evidence from Amazonia. *Science* 306, 496–499. (doi: [10.1126/science.1094492](https://doi.org/10.1126/science.1094492))
55. Besnier N. 1989 Information withholding as a manipulative and collusive strategy in *Nukulaelae gossip*. *Language in Society* 18, 315–41. (doi: [10.1017/S0047404500013634](https://doi.org/10.1017/S0047404500013634))
56. Colman, M. & Healey, P. G. T. 2011 The Distribution of Repair in Dialogue. In *Proceedings of Cogsci 2011: 33rd Annual Conference of the Cognitive Science Society*, pp. 1563–1568.
57. Wetherby, A. M., Alexander, D. G. & Prizant, B. M. 1998 The ontogeny and role of repair strategies. In *Transitions in prelinguistic communication* (eds A. M. Wetherby S. F. Warren & M. E. Fey), pp. 135–159.
58. Corrin J. 2010 Maternal repair initiation at MLU Stage I: The developmental power of 'hm?'. *First Language* 30, 312–328. (doi: [10.1177/0142723710370526](https://doi.org/10.1177/0142723710370526))
59. Healey, P., Purver, M., King, J., Ginzburg, J. & Mills, G. 2003 Experimenting with clarification in dialogue. In *Proceedings of the 25th Annual Meeting of the Cognitive Science Society*, pp. 539–544. [cited 2012 Jul. 2].
60. Healey P. G. T., Purver M. & Howes C. 2014 Divergence in Dialogue. *PLoS ONE* 9, e98598. (doi: [10.1371/journal.pone.0098598](https://doi.org/10.1371/journal.pone.0098598))
61. Frank M. C. & Goodman N. D. 2012 Predicting Pragmatic Reasoning in Language Games. *Science* 336, 998–998. (doi: [10.1126/science.1218633](https://doi.org/10.1126/science.1218633))
62. Hasson U., Ghazanfar A. A., Galantucci B., Garrod S. & Keysers C. 2012 Brain-to-brain coupling: a mechanism for creating and sharing a social world. *Trends Cogn. Sci. (Regul. Ed.)* 16, 114–121. (doi: [10.1016/j.tics.2011.12.007](https://doi.org/10.1016/j.tics.2011.12.007))
63. Tinbergen N. 1963 On aims and methods of Ethology. *Zeitschrift für Tierpsychologie* 20, 410–433. (doi: [10.1111/j.1439-0310.1963.tb01161.x](https://doi.org/10.1111/j.1439-0310.1963.tb01161.x))
64. Dawkins R. & Krebs J. R. 1978 Animal signals: Information or manipulation? In *Behavioural Ecology: An Evolutionary Approach* (eds Krebs J. R. & Davies N. B.), pp. 282–309. Oxford: Blackwell Scientific Publishers.
65. Marler P. R. 1985 Ethology of communicative behavior. In *Comprehensive Textbook of Psychiatry* (eds Kaplan H. I. & Sadock B. J.), pp. 237–246. Baltimore/London: Williams and Wilkins.
66. Chomsky N. 1965 Aspects of the Theory of Syntax. Cambridge: M.I.T. Press.
67. Boeckx C. 2010 *Language in cognition: uncovering mental structures and the rules behind them*. Malden, MA: Wiley-Blackwell.
68. Hockett C. F. & Altmann S. A. 1968 A note on design features. In *Animal communication: Techniques of study and results of research* (ed Sebeok T.), pp. 61–72. Bloomington: Indiana University Press.
69. Jakobson R. 1960 Linguistics and Poetics. In *Style in Language* (ed Sebeok T. A.), pp. 350–377. Cambridge, MA: MIT Press.
70. Popper K. R. 1954 Self-reference and meaning in ordinary language. *Mind* 63, 162–169.
71. Tomasello M., Carpenter M., Call J., Behne T. & Moll H. 2005 Understanding and Sharing Intentions: The Origins of Cultural Cognition. *Behavioral and Brain Sciences* 28, 675–691. (doi: [10.1017/S0140525X05000129](https://doi.org/10.1017/S0140525X05000129))
72. Frith C. & Frith U. 2005 Theory of mind. *Current Biology* 15, R644–R645.
73. Baron-Cohen S. 1999 The evolution of a theory of mind. In *The descent of mind: psychological perspectives on hominid evolution* (eds Corballis M. C. & Lea S.), pp. 261–277. Oxford: Oxford University Press. [cited 2015 Jul. 2].
74. Bratman M. E. 1992 Shared Cooperative Activity. *The Philosophical Review* 101, 327–341. (doi: [10.2307/2185537](https://doi.org/10.2307/2185537))

75. Hutchins E. 2006 The Distributed Cognition Perspective on Human Interaction. In *Roots of human sociality: Culture, cognition, and human interaction* (eds Enfield N. J. & Levinson S. C.), pp. 375–398. Oxford: Berg.
76. Tomasello M. 2014 The ultra-social animal. *European Journal of Social Psychology* 44, 187–194.
77. Enfield N. J. 2013 *Relationship Thinking: Agency, Enchrony, and Human Sociality*. Oxford: Oxford University Press.
78. Evans N. & Levinson S. C. 2009 The myth of language universals: Language diversity and its importance for cognitive science. *Behavioral and Brain Sciences* 32, 429–492. (doi: [10.1017/S0140525X0999094X](https://doi.org/10.1017/S0140525X0999094X))
79. Chomsky N. 2011 Language and Other Cognitive Systems. What Is Special About Language? *Language Learning and Development* 7, 263–278. (doi: [10.1080/15475441.2011.584041](https://doi.org/10.1080/15475441.2011.584041))
80. Enfield N. J. 2010 Without Social Context? *Science* 329, 1600–1601. (doi: [10.1126/science.1194229](https://doi.org/10.1126/science.1194229))