



This is a repository copy of *Plant perception of beta-aminobutyric acid is mediated by an aspartyl-tRNA synthetase*.

White Rose Research Online URL for this paper:
<http://eprints.whiterose.ac.uk/110817/>

Version: Accepted Version

Article:

Luna, E., van Hulst, M., Zhang, Y. et al. (10 more authors) (2014) Plant perception of beta-aminobutyric acid is mediated by an aspartyl-tRNA synthetase. *Nature Chemical Biology*, 10 (6). pp. 450-456. ISSN 1552-4450

<https://doi.org/10.1038/NCHEMBIO.1520>

Reuse

Unless indicated otherwise, fulltext items are protected by copyright with all rights reserved. The copyright exception in section 29 of the Copyright, Designs and Patents Act 1988 allows the making of a single copy solely for the purpose of non-commercial research or private study within the limits of fair dealing. The publisher or other rights-holder may allow further reproduction and re-use of this version - refer to the White Rose Research Online record for this item. Where records identify the publisher as the copyright holder, users can verify any specific terms of use on the publisher's website.

Takedown

If you consider content in White Rose Research Online to be in breach of UK law, please notify us by emailing eprints@whiterose.ac.uk including the URL of the record and the reason for the withdrawal request.



eprints@whiterose.ac.uk
<https://eprints.whiterose.ac.uk/>

Published in final edited form as:

Nat Chem Biol. 2014 June ; 10(6): 450–456. doi:10.1038/nchembio.1520.

Plant perception of β -aminobutyric acid is mediated by an aspartyl-tRNA synthetase

Estrella Luna¹, Marieke van Hulst², Yuhua Zhang^{3,7}, Oliver Berkowitz^{4,8}, Ana López¹, Pierre Pétriacq¹, Matthew A. Sellwood⁵, Beining Chen⁵, Mike Burrell¹, Allison van de Meene³, Corné M.J. Pieterse², Victor Flors⁶, and Jurriaan Ton¹

¹Department of Animal and Plant Sciences, The University of Sheffield, UK ²Department of Biology, Utrecht University, The Netherlands ³Rothamsted Research, UK ⁴School of Plant Biology, University of Western Australia, Perth, Australia ⁵Department of Chemistry, The University of Sheffield, UK ⁶Department of CAMN, University of Jaume I, Spain

Abstract

Specific chemicals can prime the plant immune system for augmented defence. β -aminobutyric acid (BABA) is a priming agent that provides broad-spectrum disease protection. However, BABA also suppresses plant growth when applied in high doses, which has hampered its application as a crop defence activator. Here we describe a mutant of *Arabidopsis thaliana* that is impaired in BABA-induced disease immunity (*ibi1*) but hypersensitive to BABA-induced growth repression. *IBI* encodes an aspartyl-tRNA synthetase. Enantiomer-specific binding of R-BABA to IBI1 primed the protein for non-canonical defence signalling in the cytoplasm after pathogen attack. This priming was associated with aspartic acid accumulation and tRNA-induced phosphorylation of translation initiation factor eIF2 α . However, mutation of eIF2 α -phosphorylating GCN2 kinase did not affect BABA-induced immunity, but relieved BABA-induced growth repression. Hence, BABA-activated IBI1 controls plant immunity and growth via separate pathways. Our results open new opportunities to separate broad-spectrum disease resistance from the associated costs on plant growth.

Users may view, print, copy, and download text and data-mine the content in such documents, for the purposes of academic research, subject always to the full Conditions of use:http://www.nature.com/authors/editorial_policies/license.html#terms

Correspondence to: Jurriaan Ton, Department of Animal and Plant Sciences, University of Sheffield, Western Bank, S10 2TN, Sheffield, UK. Tel: +44 (0)1142220081; j.ton@sheffield.ac.uk.

⁷Present address: Research & Development Center, Firmenich FmgAromatics (China) Co., Ltd, Shanghai, China.

⁸Present address: Australian Research Council (ARC) Centre of Excellence in Plant Energy Biology, The University of Western Australia, Perth, Australia

AUTHOR CONTRIBUTION

J.T., overall design and supervision of research plan, experiments (mutant screen, map-based cloning, construction of transgenic lines, RT-qPCR, bioassays) and manuscript writing; E.L., experiments (map-based cloning, construction of transgenic lines, RT-qPCR, bioassays, confocal microscopy, and IP assays), intellectual input and manuscript writing; M.H., experiments (mutant screen, bioassays) and intellectual input; Y.Z., experiments (map-based cloning, RT-qPCR) and intellectual input; O.B. experiments (GCN2 activity assays) and intellectual input; A.L., experiments (confocal microscopy, IP assays); P.P., experiments (mass spectrometry), M.A.S., computational modelling; B.C. computational modelling and intellectual input; M.B., intellectual input; A.M., experiments (confocal microscopy); C.M.J.P., intellectual input; V.F., experiments (bioassays) and intellectual input.

COMPETING FINANCIAL INTEREST

The authors declare no competing financial interests.

INTRODUCTION

Plants have evolved sophisticated strategies to defend themselves against pathogens. Apart from pre-existing defence barriers, plants can mobilise structural and chemical defence barriers that become active after pathogen attack. These inducible defences are controlled by the plant's innate immune system, which provides protection against the majority of potentially harmful micro-organisms. Regulation of plant immunity involves small-molecule hormones, such as salicylic acid (SA) and jasmonic acid (JA)¹. To optimally adapt to hostile environments, plants can sensitize their basal immune system in response to specific alarm signals^{2,3}. This so-called 'priming of defence' mediates a faster and stronger defence reaction to future pathogen attacks. A classic example comes from systemic acquired resistance (SAR), which is associated with priming of SA-inducible defences in distal plant parts after localised pathogen attack^{4,5}. Although priming of defence rarely provides complete protection against disease and is associated with fitness costs^{6,7}, it has the benefit that it boosts multi-genic basal resistance that relies on perception of multiple microbe- and damage-associated molecular patterns (MAMPs and DAMPs, respectively)^{8,9}. Accordingly, priming of defence offers broad-spectrum disease protection that is difficult to break by pathogens. Furthermore, priming typically provides long-lasting disease protection and can even be transmitted epigenetically to following generations^{10,11}. Taken together, these characteristics make priming attractive for integration in sustainable crop protection^{8,12}.

The search for resistance-inducing chemicals in plants has yielded various compounds. These molecules are often (derivatives of) MAMPs, or plant-endogenous signalling molecules, such as (methyl)SA or azeleic acid¹³. When applied in relatively moderate quantities, these chemicals prime SA-inducible defences. There are also plant-xenobiotic chemicals that can prime plant defence^{2,14}. A well-known example is β -aminobutyric acid (BABA). This non-protein amino acid protects plants against an exceptionally broad spectrum of stresses, including crop diseases that are difficult to control by conventional strategies of disease management¹⁵. The broad-spectrum effectiveness of BABA-induced resistance (BABA-IR) is based on simultaneous priming of SA-dependent and SA-independent defence mechanisms^{16,17}. The SA-dependent component of BABA-IR leads to augmented activation of SA-inducible defence genes and requires a functional NPR1 protein¹⁶. Previously, we identified three *Arabidopsis* mutations that differentially affect SA-dependent and SA-independent BABA-IR¹⁷. Recently, two additional *Arabidopsis* mutants in SA-dependent BABA-IR have been identified: the *lerc* mutant that is affected in a receptor kinase gene¹⁸, and the *ald1* mutant that is impaired in pipecolic acid production¹⁹. SA-independent BABA-IR is associated with priming of pathogen-induced callose, and requires intact biosynthesis and perception of the plant hormone abscisic acid (ABA)^{17,20}. This priming of cell wall defence has also been linked to induced systemic resistance (ISR) after root colonization by *Pseudomonas fluorescens* WCS417r²¹.

A major disadvantage of chemical priming agents is that over-stimulation can lead to stress that affects plant growth⁶. These stress reactions have been attributed to the costs of direct induction of defence mechanisms, which often develops upon treatment with relatively high doses of the priming agent⁷. However, the BABA-induced stress response appears to be more specific, and has been related to perturbations in amino acid homeostasis²². This

undesirable side-effect of BABA has hindered exploitation of the agent as a crop defence activator, despite its extraordinary wide range of effectiveness¹⁵.

In this study, we have identified the *IMPAIRED IN BABA-INDUCED IMMUNITY 1 (IBI1)* gene as a new master regulator of BABA-IR. *IBI1* encodes an aspartyl-tRNA synthetase (AspRS). We provide evidence that the active R-enantiomer of BABA binds to the IBI1 protein and interferes with canonical AspRS activity. This interaction primes IBI1 for non-canonical defence activity against pathogen attack and simultaneously activates a separate stress pathway that results in plant growth repression. Our study shows that the benefits of broad-spectrum disease resistance can be separated from the associated costs, providing new opportunities to improve chemical induction of broad-spectrum disease resistance without affecting crop growth.

RESULTS

The *impaired in BABA-induced immunity1 (ibi1)* mutant

BABA-treated Arabidopsis develops full immunity against the biotrophic downy mildew pathogen *H. arabidopsidis*, which acts independently from the SA/NPR1-dependent pathway^{16,17}. To search for novel signalling components in this SA-independent immune response, we screened an EMS-mutagenized M2 population of SA non-accumulating Col-0 NahG²³ for mutants impaired in BABA-induced immunity (*ibi*) against *H. arabidopsidis*. Evaluation of 34,200 plants from 57 M2 pools yielded two putative *ibi* mutants from different pools, whose phenotype could be confirmed in the M3 generation. No complementation of the *ibi* phenotype was observed in F2 progeny from a cross between both mutants ($n > 50$), while F2 progeny from a backcross between NahG *ibi1-1* with NahG displayed monogenic 1: 3 segregation of the mutant phenotype ($\chi^2 = 0.144$; $p=0.704$). These results indicate that both mutations, termed *ibi1-1* and *ibi1-2*, are recessive and allelic.

Microscopic analysis of trypan-blue stained leaves confirmed that leaves of NahG *ibi1-1*, unlike NahG, failed to arrest *H. arabidopsidis* colonization after treatment of the roots with 150 μ M BABA (Fig. 1a, Supplementary Results, Supplementary Fig. 1a). Epifluorescence microscopy of aniline blue/calcofluor-stained leaves revealed that BABA-treated NahG *ibi1-1* did not deposit augmented levels of pathogen-arresting callose at 2 days post inoculation (dpi) with *H. arabidopsidis* conidiospores (Supplementary Fig. 1b). Hence, *IBI1* controls SA-independent priming of cell wall defence. The NahG *ibi1-1* mutant was also impaired in SA-independent BABA-IR against the necrotrophic fungus *Plectosphaerella cucumerina* (Supplementary Fig. 1c), demonstrating that *IBI1* controls BABA-IR against biotrophic and necrotrophic pathogens. BABA-induced priming of cell wall defence against necrotrophic fungi requires intact responsiveness to the plant hormone abscisic acid (ABA)^{20,24}. However, both NahG and NahG *ibi1-1* developed equal levels of ABA-induced resistance against *P. cucumerina* (Supplementary Fig. 1c). It can thus be concluded that the *ibi1-1* mutation does not affect ABA-induced defence, which suggests that *IBI1* acts upstream of ABA in the BABA-IR pathway.

***IBI1* encodes a class II aspartyl-tRNA synthetase**

Mapping of the *ibi1-1* mutation was performed in a F₂ population from a cross between NahG *ibi1-1* and the Landsberg *erecta* (*Ler*) *rpp5* mutant²⁵, which is susceptible to *H. arabidopsidis* WACO9. Apart from the *ibi1-1* allele and the *NahG* transgene, other genetic determinants from Col-0 and *Ler* parents were segregating in this mapping population, causing a gradient of susceptibility phenotypes to *H. arabidopsidis*. Approximately 14,000 F₂ plants were screened for loss of BABA-IR against *H. arabidopsidis*, of which only 1,204 individuals displayed sporulation by 7 dpi. Using sequence length polymorphism markers and (derived) cleaved amplified polymorphic sequence markers²⁶, the *ibi1-1* mutation was mapped to a region on the lower arm of chromosome IV, encompassing 64 candidate genes. Sanger sequencing of cDNA-derived PCR products identified a stop mutation in the 1st translated exon of *At4g31180* (Fig. 1b), which encoded a class II aspartyl-tRNA synthetase (AspRS). Subsequent sequencing of *At4g31180* from NahG *ibi1-2* revealed a different stop mutation in the same exon of the gene (Fig. 1b).

***IBI1* controls priming of multiple defence responses**

To confirm that mutations in *At4g31180* are responsible for the *ibi1* phenotype, we evaluated phenotypes of two additional T-DNA insertion mutants, *ibi1-3* and *ibi1-4* (Fig. 1b). Despite the fact that these mutations are in the genetic background of the SA-producing Col-0 accession, both mutants failed to express BABA-IR against *H. arabidopsidis* (Supplementary Fig. 2a). Similarly, the *ibi1-1* mutation crossed into the Col-0 background blocked BABA-IR against *H. arabidopsidis* (Fig. 1c, Supplementary Fig. 2a). The absence of BABA-IR in *ibi1-1* was associated with lack of augmented cell wall defence (Supplementary Fig. 2b). Hence, mutations in *At4g31180* cause the *ibi1* phenotype and can block BABA-IR in the background of SA-producing Col-0. Considering that SA-dependent resistance is highly effective against *H. arabidopsidis*²⁷, this suggests that *IBI1* controls both SA-dependent and SA-independent BABA-IR. However, application of 0.5 mM SA to shoots of *ibi1-1* induced wild-type levels of resistance against *H. arabidopsidis* (Fig. 1c), demonstrating that *IBI1* does not regulate SA-induced defence directly. Since SA-dependent BABA-IR is based on priming of SA-dependent genes, rather than direct induction of SA-dependent defence^{16,17,21}, we tested BABA-induced priming of SA-induced *PR1* gene expression. BABA-treated *ibi1-1* failed to show augmented *PR1* gene induction after SA application to the leaves, whereas BABA-treated Col-0 showed augmented *PR1* induction compared to water-treated plants at 4 hours after SA application (Supplementary Fig. 2c). BABA-treated *ibi1-1* also failed to display augmented *PR1* gene induction after inoculation with *H. arabidopsidis* (Supplementary Fig. 2d). Thus, the *ibi1-1* mutation blocks BABA-induced priming of both SA-dependent and SA-independent defence.

Induced systemic resistance (ISR) against *H. arabidopsidis* after root colonization by *Pseudomonas fluorescens* WCS417r is associated with SA-independent priming of cell wall defence, and shares signal transduction components with BABA-IR²¹. To examine possible involvement of *IBI1* in ISR, wild-type and *ibi1-1* plants were grown on *P. fluorescens* WCS417r-containing soil and evaluated for resistance against *H. arabidopsidis*. As is shown in Fig. 1c, *P. fluorescens* WCS417r elicited ISR in the wild-type, but not in *ibi1-1*. Hence, *IBI1* is not only critical for BABA-IR, it also controls rhizobacteria-mediated ISR.

IBI1 responds to pathogen attack

The *IBI1* gene encodes a class II aspartyl-tRNA synthetase (AspRS), which catalyses biosynthesis of aspartyl-tRNA through esterification of L-aspartic acid (L-Asp) to cognate tRNAs^{Asp}²⁸. The Arabidopsis genome contains two close AspRS gene homologues: *IBI1* and *At4g26870*. The corresponding proteins show 74% identity and 84% similarity in amino acid sequence (Supplementary Fig. 3a). RT-qPCR analysis revealed that *At4g26980* is expressed to only 6% of that of *IBI1* (Supplementary Fig. 3b), which is in agreement with publically available transcriptome data. A homozygous T-DNA mutant in *At4g26870* (*SALK_030485*) was fully capable of expressing BABA-IR (Supplementary Fig. 3c), demonstrating that the AspRS encoded by *At4g26870* has no alternative defence activity. Interestingly, *IBI1* gene transcription was not influenced by BABA (Supplementary Fig. 4). This indicates that BABA-IR by IBI is regulated by post-transcriptional processes. In contrast, *IBI1*, unlike *At4g26870*, showed increased transcription in response to *H. arabidopsidis*, (Fig. 2a), suggesting defence regulatory activity independently of BABA.

To study the subcellular localisation of *IBI1*, we created transgenic lines in the *ibi1-1* background, expressing recombinant *IBI1:YFP* under constitutive control by the 35S cauliflower mosaic virus promoter. Two independent lines displayed a 31- and 32-fold increase in *IBI1* transcript levels compared to un-infected Col-0 plants, respectively (Supplementary Fig. 5a). This level of *IBI1* expression was sufficient to fully restore BABA-IR against *H. arabidopsidis* (Fig. 2b), demonstrating cellular functionality of recombinant *IBI1*-YFP protein. Both over-expression lines also displayed increased basal resistance to *H. arabidopsidis*, which was particularly pronounced at 5 dpi and associated with augmented expression of pathogen-induced cell wall defence and SA-induced *PR1* transcription (Supplementary Figs. 5c-d). Considering that *IBI1* transcription was enhanced during *H. arabidopsidis* infection (Fig. 2a), these results demonstrate that elevated *IBI1* transcription contributes to basal resistance in the absence of BABA. Confocal laser scanning microscopy revealed that *IBI1*-YFP is predominantly localised at the endoplasmic reticulum (ER) and cytoplasmic strands surrounding the ER (Fig. 2c). This subcellular localisation was confirmed by co-localization analysis of *IBI1*-YFP with CFP- and GFP-tagged ER markers²⁹ in double transgenic F1 progenies from a cross between *ibi1-1 35S:IBI1:YFP-1* and ER-marker lines (Supplementary Fig. 6). BABA treatment alone did not alter the subcellular localization of *IBI1*-YFP (Fig. 2c). However, inoculation of un-primed plants with *H. arabidopsidis* caused a minor shift of *IBI1*-YFP to the cytoplasmic periphery of the cell (Fig. 2c). Interestingly, this subcellular response to *H. arabidopsidis* was dramatically increased in BABA-treated plants, where *IBI1*-YFP was almost exclusively translocated to the peripheral cytoplasm (Fig. 2c, Supplementary Fig. 7). Since plant aminoacyl-tRNA proteins are targeted to either plastids, mitochondria or cytoplasm³⁰, we conclude that BABA primes pathogen-inducible translocation of *IBI1* within the cytoplasmic domain, from the cytoplasmic strands surrounding the ER to the cytoplasmic periphery of the cell.

BABA binds to IBI1 in an enantiomer-specific manner

The chemical structure of L-Asp is strikingly similar to that of the R-enantiomer of BABA (R-BABA; Fig. 3a). Previous studies have shown that R-BABA is the active enantiomer for induced resistance in tobacco, cauliflower and lettuce³¹⁻³³. The similarity between L-Asp

and R-BABA prompted us to investigate whether BABA-IR in Arabidopsis is also determined by its R-enantiomer. Of the two enantiomers, only R-BABA induced resistance against *H. arabidopsidis* (Fig. 3a). A similar enantiomer-specific effect was found for BABA-IR in tomato against *Botrytis cinerea* (Supplementary Fig. 8). Hence, BABA is perceived in a mechanistically similar manner across taxonomically unrelated plant species. Co-application of 150 μ M BABA with L-Asp to Arabidopsis mildly reduced BABA-IR to *H. arabidopsidis* (Supplementary Fig. 9a), suggesting competition between BABA and L-Asp. Treatment with 150 μ M L-Asp alone failed to induce disease resistance (Fig. 3a), although a 10-fold higher concentration of L-Asp (1.5 mM) resulted in a relatively weak increase in resistance (Supplementary Fig. 9b). However, the latter resistance response was also present in *ibi1-1* plants, suggesting an IBII-independent stress response to application of high levels of L-Asp.

To explore the possibility that R-BABA binds to the L-Asp-interacting site of IBII, we modelled protein-amino acid interactions, using information from crystallised AspRS proteins of *Pichia pastoris* and *Pyrococcus kodakaraensis*. Previous site-directed mutagenesis studies with *P. pastoris* have revealed the L-Asp-, ATP- and tRNA-interacting protein domains of AspRS³⁴, which are conserved between Arabidopsis IBII, *P. pastoris* AspRS, and *P. kodakaraensis* AspRS (Supplementary Fig. 10). Due to the availability of a crystallised co-structure of *P. kodakaraensis* AspRS and L-Asp at relatively high resolution (1.9 Å)³⁵, our computational docking models of BABA to the L-Asp-binding domain were based on *P. kodakaraensis* AspRS (PDB: 3NEL). Binding of L-Asp to AspRS produced the lowest energy complex in comparison to R-BABA and S-BABA (Supplementary Fig. 11). The difference in binding energy between L-Asp and R-BABA was 7.25 kcal.mol⁻¹, which can be attributed to the loss of two weak hydrogen-bonding interactions between the side-chain carboxylic acid group of L-Asp and the AspRS binding residues SER487 and ASP331. However, the stronger backbone interactions between ASP348 and SER307 (via a bridging water molecule) were retained for R-BABA. Furthermore, Van der Waals/hydrophobic interactions between the proximal methyl group of BABA and the binding site would partially compensate for the loss of the carboxylic acid group in comparison of L-Asp. The energy difference between L-Asp and S-BABA binding was 11.74 kcal.mol⁻¹. This relatively weak binding affinity between S-BABA and IBII is due to the loss of another H-bond between the bridging water molecule and the amino group of S-BABA. Consequently, S-BABA orientated in a non-favourable direction for H-bonding and structural fitting into the protein's binding cavity (Supplementary Fig. 11). Our models suggest that R-BABA binds with a greater affinity than S-BABA to the Asp-binding pocket of AspRS.

To experimentally confirm enantiomer-specific binding of BABA to IBII, wild-type (Col-0) and functionally complemented *ibi1-1 35S:IBII:YFP-1* were treated with water, R-BABA, or S-BABA. Subsequently, IBII:YFP in plant protein extracts was immunoprecipitated and analysed by mass spectrometry for the presence of BABA. Using both MALDI-qTOF and ESI-qTOF analysis, we detected significant quantities of BABA in the immunoprecipitated IBII:YFP fraction from R-BABA-treated *ibi1-1 35S:IBII:YFP-1* plants (Fig. 3b, Supplementary Fig. 12). Conversely, we detected only traces of BABA in the

immunoprecipitated IB11:YFP fraction of S-BABA-treated *ibi1-1 35S:IB11:YFP-1* plants, which were comparable to levels from R-BABA-treated Col-0 lacking the YFP epitope for immunoprecipitation (Fig. 3b, Supplementary Fig. 12). Thus, BABA binds in an enantiomer-specific manner to IB11 *in planta*.

BABA blocks canonical AspRS activity of IB11

To explore the impact of BABA binding to IB11, we examined the effects of BABA on AspRS activity. Since IB11:YFP functionally restores BABA-IR in the *ibi1-1* mutant (Fig. 2b), we used immunoprecipitated IB11:YFP to assay *in vitro* AspRS activity. However, despite various experimental variations of the assay (Supplementary Table 1)³⁶⁻³⁹, we failed to detect *in vitro* ATP-pyrophosphate (PPi) exchange activity by IB11:YFP. Subsequent experiments revealed that IB11:YFP loses enantiomer-specific binding activity to BABA during protein purification (Supplementary Fig. 13), indicating that IB11 functionality is affected when the protein is extracted from its cellular context, probably due to lack of interacting co-factors under *in vitro* conditions. We therefore continued with an alternative *in planta* approach to study the impact of BABA on AspRS activity.

In both yeast and Arabidopsis, the protein kinase GCN2 phosphorylates eukaryotic translation initiation factor eIF2 α in response to hyper-accumulation of uncharged tRNA^{40,41}. Accordingly, we used eIF2 α phosphorylation to test whether BABA inhibits AspRS activity, thereby increasing accumulation of uncharged tRNA substrate. Western blot analysis confirmed that BABA induces eIF2 α phosphorylation in Col-0, *ibi1-1* and *Ler* plants, but not in the *gcn2-1* mutant⁴² (Fig. 4a, Supplementary Fig. 14). Hence, BABA activates GCN2, presumably by hindering *in planta* aminoacylation activity of tRNA synthetases. Interestingly, *ibi1-1* plants displayed faint eIF2 α phosphorylation in the absence of BABA and increased eIF2 α phosphorylation after BABA treatment (Fig. 4a; Supplementary Fig. 14). This suggests that AspRS activity from the relatively lowly expressed *At4g26870* gene is also sensitive to perturbation by BABA. It is plausible that the limited AspRS activity of the *ibi1-1* mutant increases its sensitivity to BABA-induced AspRS inhibition, leading to augmented accumulation of uncharged tRNA and GCN2 activity.

To confirm the impact of BABA on AspRS activity, we employed MALDI-qTOF analysis to measure Asp levels in leaf extracts of wild-type plants following root treatment with either R-BABA, or S-BABA. Treatment with active R-BABA increased *in planta* Asp levels by 3-fold, whereas the inactive S-enantiomer had no effect (Fig. 4b). Since Asp is a substrate of AspRS, these results strengthen our conclusion that BABA obstructs canonical AspRS activity.

Finally, we compared Asp levels in leaf tissues between wild-type, *ibi1-1* and *ibi1-1 35S:IB11:YFP-1* plants to verify *in planta* AspRS activity by IB11 (Fig. 4c). As can be expected for a genotype affected in AspRS activity, *ibi1-1* displayed enhanced Asp accumulation, which was reverted to wild-type levels in *ibi1-1 35S:IB11:YFP-1* plants. Together with the observation that *ibi1-1* displays augmented activity of tRNA-induced GCN2 (Fig. 4a), these results confirm that IB11 functions as an AspRS enzyme.

IBI1 controls resistance and growth via separate pathways

Apart from inducing broad-spectrum resistance, BABA is also known to suppress plant growth^{6,22}. To test the role of IBI1 in this stress response, growth rates of wild-type and *ibi1-1* seeds were assayed on BABA-containing agar plates (400 μ M). Surprisingly, *ibi1-1* seedlings on BABA-containing agar stopped growing immediately after seed germination, or failed to germinate all together, while wild-type seeds managed to germinate and grow under these conditions (Supplementary Fig. 15a). This hypersensitivity to BABA was only apparent upon treatment with the R-enantiomer of BABA, and functions independently from SA, since NahG *ibi1-1* displayed similar stress sensitivity as *ibi1-1* (Supplementary Fig. 15a-b). The difference in BABA-induced stress between wild-type and *ibi1-1* plants was also apparent at later developmental stages: one week after BABA application to roots of three-week-old plants, *ibi1-1* displayed 50% lower shoot fresh weight values than control-treated *ibi1-1*, whereas BABA-treated wild-type only exhibited a 26% reduction in shoot fresh weight (Fig. 5a). In a separate experiment, the *SALK_030485* mutant in the *IBI1* homologue *At4g26870* displayed wild-type levels of BABA-induced growth repression (Supplementary Fig. 16a). Considering that *At4g26870* is expressed to only 6% of *IBI1* (Supplementary Fig. 3b), we conclude that the relatively small reduction in total AspRS of the *SALK_030485* mutant is not sufficient to cause detectable levels of hypersensitivity to BABA-induced stress. By contrast, over-expression of IBI1 in *ibi1-1 35S:IBI1:YFP-1* provided enhanced tolerance to BABA-induced growth repression (Supplementary Fig. 16b), as can be expected from a genotype with increased BABA-binding capacity.

BABA-induced plant stress is associated with perturbations in amino acid homeostasis in Arabidopsis²². Considering that eIF2 α phosphorylation by GCN2 impacts amino acid metabolism in yeast, we investigated the possibility that GCN2 controls BABA-induced growth repression. Comparison of the *gcn2-1* mutant to its corresponding wild-type (*Ler*) revealed that the *gcn2-1* mutation is more tolerant to BABA-induced growth repression (Fig. 5a), confirming that GCN2 indeed regulates BABA-induced stress. By contrast, *gcn2-1* seedlings were not impaired in BABA-IR against *H. arabidopsidis* CALA2, which is virulent on *Ler* genotypes⁴³ (Fig. 5b). Hence, GCN2 does not regulate BABA-IR. Together, these results show that BABA-IR and BABA-induced growth reduction are controlled by separate signalling pathways.

DISCUSSION

Our study has shown that BABA-induced disease protection requires an intact *IBI1* gene (Figs. 1, 2b, 3a, 4b, Supplementary Figs. 1, 2, 3c). In combination with our demonstration that only the active R-enantiomer of BABA binds to IBI1 *in planta* (Fig. 3b; Supplementary Fig. 12), our results provide plausible evidence that IBI1 is the plant receptor of BABA. Computational docking studies indicated that R-BABA binds to the conserved L-Asp binding site of AspRS in a similar spatial orientation as L-Asp (Supplementary Figs. 10, 11). The canonical L-Asp substrate of the enzyme is constantly processed and released as charged Asp-tRNA^{ASP}. Conversely, R-BABA cannot be aminoacylated and would eventually replace L-Asp from the binding pocket, thereby ‘jamming’ the protein’s canonical AspRS activity. In support of this, BABA triggered enhanced Asp accumulation in an enantiomer-

specific manner (Fig. 4b) and stimulated GCN2-dependent eIF2 α phosphorylation (Fig. 4a), which marks cellular accumulation of uncharged tRNA⁴⁰⁻⁴².

Our study raises one important question: why have plants evolved a receptor of a xenobiotic compound that is not produced by the plant? One possible explanation comes from our finding that *P. fluorescens* WCS417r bacteria failed to elicit ISR in *ibi1-1* plants (Fig. 1c). Considering the critical role of IB11 in BABA perception, it is plausible that ISR-eliciting rhizobacteria produce BABA, or a functional analogue thereof. Indeed, *P. fluorescens* WCS417r-ISR and BABA-IR against *H. arabidopsidis* share similar signal transduction components and are both associated with priming of callose deposition²¹. It is also plausible that IB11 contributes to basal disease resistance. Of the two Arabidopsis genes encoding non-plastid AspRS proteins, only *IB11* showed increased transcription in response to *H. arabidopsidis* inoculation (Fig. 2a). Moreover, transgenic over-expression of *IB11* increased basal resistance in the absence of BABA (Fig. 2b, Supplementary Fig. 5). In combination with selective uptake of Asp by the pathogen, increased *IB11* expression during pathogen infection would lead to more IB11 protein that is deprived of AspRS activity. We propose that this denial of canonical activity, together with pathogen-induced translocation to the cytoplasm (Fig. 2c, Supplementary Fig. 7), triggers non-canonical defence activity by IB11. R-BABA partially mimics this process by blocking the Asp-binding pocket of IB11, thereby depriving it from AspRS activity and priming its non-canonical defence response to pathogen attack.

Aminoacyl-tRNA synthetases are known for their ability to express non-canonical functions beyond translation, which have been attributed to their ability to interact with other proteins⁴⁴. Interaction between IB11 and (proteinaceous) co-factors could explain why purified IB11:YFP lacks *in vitro* activity (Supplementary Table 1; Supplementary Fig. 13). Specific IB11-protein interactions could also be responsible for the non-canonical defence activity of IB11 in the cytoplasm (Fig. 2c, Supplementary Fig. 7). Human glutaminyl-tRNA synthetase exerts anti-apoptotic activity through inhibitory interaction with the mitogen-activated protein triple kinase (MAPKKK) ASK1⁴⁵. Therefore, it is tempting to speculate that IB11 inhibits cytoplasm-localized plant MAPKKKs with repressive activity on plant immunity, such as MEKK1 and EDR1^{46,47}. Interestingly, amino acid alignments between IB11 and the AspRS homologue At4g26870 revealed relatively high dissimilarity at the N-terminus (Supplementary Fig. 3a). Since At4g26870 does not regulate BABA-IR (Supplementary Fig. 3c), we propose that the non-canonical defence activity of IB11 is determined by its unique N-terminal sequence. This hypothesis is in agreement with previous findings that non-canonical functions of aminoacyl-tRNA synthetases are determined by variable N- or C-terminal domains^{44,48}.

We conclude that plant perception of BABA is mediated by IB11. The enzyme can switch from canonical AspRS activity to non-canonical defence activity upon pathogen infection. This response is strongly augmented by R-BABA, which blocks the L-Asp binding site of the enzyme, thereby depriving the protein from AspRS activity and priming it for defence activity (Fig. 6). BABA-induced inhibition of AspRS activity also increases cellular accumulation of uncharged tRNA^{Asp}, which triggers GCN2-dependent eIF2 α phosphorylation and stress-related growth repression, independently from BABA-IR (Fig.

6). Hence, broad-spectrum disease protection by BABA can be uncoupled from the concurring plant stress response. Since BABA is perceived in a mechanistically similar manner by taxonomically unrelated plant species³¹⁻³³ (Supplementary Fig. 8), our discovery of the plant receptor of BABA opens new possibilities to protect crops against economically important crop diseases.

ONLINE METHODS

Plant material and growth conditions

Genotypes of the Arabidopsis lines used are presented in Supplementary table 2. Unless stated otherwise, seeds for plants in bioassays and gene expression experiments were planted in 60 mL pots containing peat/sand mixture (2:1), stratified at 4° C in darkness for 2 days, and cultivated at 8.5h light ($150 \mu\text{mol.m}^{-2}.\text{s}^{-1}$; 20°C) and 15.5h darkness (18°C). For experiments with plants older than 3 weeks, 10-day old seedlings were transplanted individually to 60 mL pots. To minimise environmental variation, plants for immunoblot blot analysis of eIF2 α phosphorylation (Westerns) were cultivated on ½-strength MS agar (0.8%). *Solanum lycopersicum* (cv. Micro-Tom) seeds were germinated in water for 5 days (darkness; 28°C), transplanted to 100 mL-pots containing Scotts Levington M3 soil, and cultivated at 16h light ($150 \mu\text{mol.m}^{-2}.\text{s}^{-1}$; 26°C) and 8h darkness (21°C).

Chemical treatments

Induction treatments with S/R- β -aminobutyric acid (BABA; Sigma-Aldrich; A4420-7), R-BABA (Astatech 62363), S-BABA (Astatech; 62359), (\pm)-Abscisic acid (ABA; Sigma-Aldrich; A1049), or L-Asp (Sigma-Aldrich; A9256) were performed by injecting 10 \times concentrated 6-mL quantities into 60-mL pots once. Final soil concentrations are indicated in figure legends. Sodium-SA (Sigma-Aldrich; S3007) was applied by spraying a 0.5 mM solution onto 3-week-old plants. Unless stated otherwise, secondary elicitation treatments were performed 2 days after primary induction treatment. For *in planta* analysis of BABA-IBI1:YFP interaction, 5-week-old Col-0 wild-type and *ibi1-1 35S:IBI1:YFP-1* plants were treated twice with water, 1.2 mM R-BABA or 1.2 mM S-BABA at 3 days apart. Five days after the second treatment, leaf material was harvested for protein extraction, immunoprecipitation and mass spectrometry analysis. Agar-grown seedlings for Western blot analysis (2-week-old) were sprayed once with 250 μM S/R-BABA to ensure synchronised activation of BABA-induced stress.

EMS mutagenesis, mutant screening and mapping

Approximately 10,000 Col-0 NahG seeds were EMS mutagenized as described⁴⁹. Seeds from 25 \pm 5 M₁ plants/pot were pooled in M₂ families for screening. Of each M₂ family, 600 seedlings (~10-days old) were transplanted into 200-well trays (Teku; JP3050/230). Three-week-old plants were soil-drenched to a final concentration of 150 μM BABA. Two days later, plants were spray-inoculated with *H. arabidopsidis* (5×10^4 sporangiospores/mL) and maintained at 100% R.H. At 5-7 days post inoculation (dpi), plants were evaluated for their phenotype and sporulating plants were transplanted and rescued with 0.1 mg/mL ridomil Gold[®] (Syngenta). Loss of BABA-IR was confirmed in the M₃ generation, as described below. The screen identified 2 *impaired in BABA-induced immunity (ibi)* mutants (NahG

ibi1-1 and NahG *ibi1-2*), which were confirmed to be recessive and allelic on the basis of segregation analysis of F₂ progeny from a backcross with NahG cross and a complementation cross, respectively. NahG *ibi1-1* was crossed with the *Ler rpp5* mutant²⁵ to produce a F₂ mapping population, which was screened for *ibi* phenotypes. Initial mapping of *ibi1-1* was based on 30 susceptible F₂ plants, using 22 SSLP markers²⁶. Fine-mapping was based on a selection of 621 of the most susceptible individuals from a total of 1204 sporulating F₂ plants isolated from the screen, using additional SSLP, CAPS and dCAPS markers, which were designed from polymorphisms between Col-0 and *Ler* genomic sequences, using the TAIR Polymorphism/Allele search tool (www.arabidopsis.org). Candidate genes in the fine-mapped region (*At4g31560-At4g32105*) were amplified from mutant cDNA by PCR using Phusion[®] DNA polymerase (Finnzymes F-530S), sequenced, and aligned to wild-type DNA using Vector NTI[®] Advance 11 computer software (Invitrogen).

Selection for *ibi1* mutant genotypes in the Col-0 background

F₂ progeny from a cross between NahG *ibi1-1* and Col-0 were analysed by PCR, using primers against *NahG*, wild-type *IBI1*, and the mutant *ibi1-1* allele (Supplementary table 2). Screening of 95 F₂ plants revealed one heterozygous *ibi1-1/IBI1* recombinant without *NahG*, suggesting that *NahG* in line B15 is genetically linked to *IBI1*. PCR-based selection of selfed progeny provided the homozygous Col-0 *ibi1-1* mutant. Mutants *ibi1-3* and *ibi1-4* are derived from SALK (*SALK-103893*) and SAIL (*SAIL-228-H03*), respectively, and were selected for homozygous insertions using one T-DNA specific primer and two gene-specific primers flanking the T-DNA insertions (Supplementary table 2).

Resistance assays, stress assays and statistics

Hyaloperonospora arabidopsidis strain WACO9 (compatible with Ws and Col genotypes), or CALA-2 (compatible with *Ler*), were maintained on Ws NahG or *Ler* plants, respectively. *H. arabidopsidis* assays were performed as described²¹. Plants (2- to 3-week old) were inoculated with *H. arabidopsidis* (5×10^4 conidiospores/mL) at 2 days after chemical treatment. Unless stated otherwise, *H. arabidopsidis* colonisation was determined microscopically at 7 dpi in trypan-blue stained leaves, as described¹⁰. Differences in class distribution between treatments were analysed for statistically significant differences by Fisher's exact tests ($\alpha=0.05$; SPSS, v19.0).

Callose depositions were examined at 2 dpi in aniline-blue/calcofluor-stained leaves, using UV-epifluorescence microscopy as described¹⁷. Effectiveness of callose was quantified by percentage of conidiospores, from which the proximal end of the emerging germ tube was encapsulated in callose. Statistical analyses were performed with average percentages per collected leaf (Student's t-tests; $\alpha=0.05$; SPSS, v19.0). Additionally, [total number of callose-arrested spores]/[total number of non-arrested spores] ratios were tested for statistical significance against corresponding ratios from water-treated wild-type plants (binomial test; $\alpha=0.05$; SPSS, v19.0).

Assays to assess priming of *PR1* transcription were performed with 3-week-old plants. SA (0.5 mM) or *H. arabidopsidis* (5×10^4 conidiospores/mL) was sprayed onto shoots at 2 days

after root treatment with BABA (150 μ M) and shoot samples were collected at different time-points after SA application, or 2 dpi with *H. arabidopsidis*. Statistical analysis was performed with normalised gene expression values (Student's t-test; $\alpha=0.05$; SPSS, v19.0).

Plectosphaerella cucumerina bioassays were performed as described²⁰. Five-week old plants were soil-drenched with BABA or ABA and 2 days later inoculated (2.5×10^6 spores/mL). Disease and colonisation were evaluated microscopically at 7 dpi by assigning trypan-blue stained leaves to different classes: I, no cell death or fungal colonization; II, moderate necrosis at inoculation site but no pathogen colonization; III, full necrosis at the site of inoculation with restricted growth of fungal hyphae IV, spreading necrosis and hyphal colonization beyond the sites of inoculation. Differences in class distribution between treatments were analysed for statistically significant differences by Fisher's exact tests ($\alpha=0.05$; SPSS, v19.0).

Induced resistance assays with tomato and *Botrytis cinerea* were performed largely as described⁵⁰. Disease and colonisation by *B. cinerea* were examined microscopically at 3 dpi in trypan-blue stained leaves and assigned to different classes: I, contained lesion and no hyphal growth outside the necrotic lesion; II, contained lesion with minimal hyphal growth beyond the lesion; III, spreading lesion with extensive hyphal growth beyond the lesion. Differences in class distribution between treatments were analysed for statistically significant differences by χ^2 or Fisher's exact tests ($\alpha=0.05$; SPSS, v19.0).

BABA-induced stress in young seedlings was recorded by digital photography at 10 days or 3 weeks after planting surface-sterilised seeds on control- and BABA-supplemented agar (500 μ M BABA, $\frac{1}{2}$ -MS; 0.8% agar). BABA-induced growth inhibition was determined in 2- to 3-week-old plants over a 7-day time interval after soil-drench treatment with BABA, and expressed as percentage fresh weight reduction compared to control-treated plants. Shapiro-Wilk tests for normality and a Levene's test for homogeneity of variances confirmed that these values meet the criteria for ANOVA. Post-hoc analysis was performed using Fisher's least significant differences test ($\alpha=0.05$; SPSS, v19.0).

Generation of transgenic plants

Gateway[®] cloning was used to produce an overexpression construct for a C-terminal IB1:YFP fusion protein (Fig. 2b). The *IB1* gene (1681bp; without stop) was amplified by PCR from Col-0 cDNA (Fw: 5'-CACCATGTCGTCGGAATCTGAAAT Rv: 5'-GGGTGAAAGCCTTTGAGGGTCA), and cloned into pENTR (Invitrogen; 11791). A PCR-amplified fragment (m13/m13rev) from pENTR containing *IB1* cDNA with boarding attL1 and attL2 sequences was used for recombination into pEarleyGate-101⁵¹. The binary plasmid was extracted (QIAprep Spin Miniprep Kit Cat. 27104) and sequenced (FW: CAATATGTGGTGACTTGCGA; RV₁ TCTCCATCTCCACATCAAGA; RV₂: AAAGGATTCGCGACTCAGCT) to confirm the correct insert. *Agrobacterium tumefaciens* GV3101 and Arabidopsis *ibi-1* (Col-0) were transformed as described previously^{52,53}. Selection Arabidopsis transformants was performed by multiple spray applications of 120 mg/L glufosinate-ammonium PESTANAL[®] (BASTA; Sigma; 45520). Selected T1 and T2 progenies were verified by PCR, using *BAR*-specific primers (Fw: 5'-GTCTGCACCATCGTCAAC; Rv: 5'-GAAGTCCAGCTGCCAGAA). Single insertion

lines were selected on the basis of monogenic segregation of BASTA resistance in T2 progeny (3R:1S). Two independent homozygous over-expression lines were obtained and verified for enhanced *IBI1* transcription (Supplementary fig. 4a), using RT-Q-PCR analysis with *IBI1*-specific primers (FW: 5'-GAGCGAGTGGTCATGCTTTTC; RV: 5'-CGAGGGAAGAGGGATGTTTTC).

Confocal laser scanning microscopy

YFP protein localisation was analysed in leaves of *ibi1-1 35S:IBI1-1* plants, using a Zeiss 780 Laser Scanning Microscope and Zen 2010 software. Leaves were placed on a slide with the upper epidermis facing the cover-slip. YFP was excited with the 514 nm laser and emission was collected from 525-600 nm. Chloroplast autofluorescence was excited with the 633 nm laser and the emission was collected from 650-750 nm. Gain and offset were maintained at the same settings. Co-localization analysis of IBI1-YFP and ER marker protein was performed with an Inverted Zeiss LSM510-NLO microscope and a 40×/1.2 water immersion lens. Plants (*ibi1-1 35S:IBI1:YFP-1*) were crossed with ER-marker lines *ER-ck* or *ER-gk*²⁹ to obtain double transgenic F1 progenies: *ibi1-1 35S:IBI1:YFP-1/ER-ck* and *ibi1-1 35S:IBI1:YFP-1/ER-gk*. Fluorescence spectra of CFP, GFP and YFP were collected from cotyledons of *ER-ck*, *ER-gk* and *ibi1-1 35S:IBI1:YFP* single transgenic lines, respectively. Fluorescent proteins (FPs) were excited with a Ar 30 mW laser (458, 488 and 514 nm) or with a Coherent Chameleon multi-photon laser. Emission spectra were collected from 478-500 nm for CFP, 480-520 nm for GFP, and 525-600 nm for YFP. Epidermal peels from *ibi1-1 35S:IBI1:YFP-1/ER-gk* were obtained by removing the abaxial cell layer from fully expanded leaflets. Fluorescence spectra of CFP, GFP and YFP in double transgenic F1 progenies were isolated, using previously recorded spectra from each FP-expressing single line with the “linear un-mixing” tool in LSM software (v4.2).

Protein binding assays, immunoprecipitation and immunoblotting

For *in planta* analysis of BABA-IBI1:YFP binding, proteins were extracted from 1 g pooled leaf material of water- and BABA-treated Col-0 and *ibi1-1 35S:IBI1:YFP-1*, using a standard protein extraction buffer (50 mM TRIS pH 7.5, 150 mM NaCl, 10% Glycerol, 10 mM MgCl₂, mM EDTA, 5 mM DTT, 0.6 mM PMSF, protease inhibitor cocktail; Sigma P9599). Extracts were centrifuged twice for 15 min. at 4°C and 14,000g. Protein concentrations in the final supernatant (1 ml) were quantified by Bradford reagent (Sigma, B6916), and standardized to equal levels (2 mg/ml) before immunoprecipitation (IP). IP was performed using an anti-YFP antibody cross-linked to sepharose beads (Abcam ab69314), following manufacturer's specifications, with slight modifications: prior to IP, sepharose beads were washed with 0.1% bovine serum albumine (BSA)-containing phosphate-buffered saline (PBS). After overnight IP on a rocking platform at 4°C, beads were pelleted by centrifugation (3000g, 1 min). Equal amounts of IBI1:YFP in IP pellets from *ibi1-1 35S:IBI1:YFP-1* plants were verified by YFP fluorescence. Proteins in pelleted sepharose beads were denatured by incubation for 5 min. at 100°C in 50 µl elution buffer (8 mM Tris, 4% SDS and 6µl/ml of β-mercaptoethanol), after which the beads were pelleted by centrifugation (14000g, 1 min) and the eluted supernatant was analysed for BABA by mass spectrometry, as detailed below.

For *in vitro* analysis of BABA-IBI1:YFP binding, BABA enantiomers were applied at three different stages of IBI1:YFP protein purification from *35S:IBI1:YFP-1* plants: crude protein extracts, sephadex-purified protein extracts (PD-10 columns; Amersham Pharmacia Biotech, 281710), and immunoprecipitated IBI1:YFP protein. IBI1:YFP concentrations in all extracts were standardized on the basis of YFP fluorescence (Ex.: A-485, Em.: A-520; FLUOstar OPTIMA, BMG-ABTECH). Following application of 100 μ M R-BABA or S-BABA, protein extracts were incubated at RT for 30 min. on a rocking platform. IBI1:YFP in crude and sephadex-purified extracts were immunoprecipitated, as described above. Before protein denaturation in elution buffer, pellets were washed twice in protein extraction buffer (see above for buffer details). Quantification of BABA in the eluted samples was performed by mass spectrometry, as detailed below.

Protein extraction and immunoblotting for phosphorylation analysis of eIF2 α was performed as described⁵⁴, using anti-Phospho-eIF2 α (Ser51) antibody (Cell Signalling Technology, USA, 9721S), Anti-TCTP antibody⁵⁴, and anti-rabbit IgG secondary antibody (Promega, S3731) in 1:1,000, 1:10,000 and 1:5,000 dilutions, respectively. Chemi-luminescent detection was performed using the Western-Star Immunodetection System (Applied Biosystems, Australia) and a VersaDoc MP 4000 CCD detector system with Quantity One software (Bio-Rad).

***In vitro* AspRS activity assays**

Purified IBI1:YFP protein was immunoprecipitated from protein extracts of over-expression plants (*ibi1-1 35S:IBI1:YFP-1*), using YFP-specific antibody (Abcam ab69314). Activity assays were performed with immunoprecipitated IBI1:YFP in suspension with different reaction buffer components and conditions, as summarized in supplementary table 1. Asp (A9256), ATP (02055) and crude tRNA from wheat germ (R7876) were purchased from Sigma. tRNA^{Asp} was synthesized through *in vitro* MEGAscript T7 transcription (Ambion, AM1333) of PCR products from Arabidopsis tRNA^{Asp} genes (FW: TAATACGACTCACTATAGGGTTCGTTGTAGTATAGTGGTAAG, RV: TGGCGCCGTTGCCGGGGATCG). tRNA^{Asp} structure was given by incubating the tRNA^{Asp} for 10 mins. at 37° C and subsequently maintained by the addition of MgCl₂ to a final concentration of 2 mM, as previously described³⁹. AspRS activity was analysed by a fluorometric pyrophosphate assay kit to detect the production of inorganic pyrophosphate, following manufacture's specifications (Abcam, ab112155) and using a plate reader (FLUOstar OPTIMA, BMG-ABTECH; Ex.: A-340; Em.: A-460). Pyrophosphate fluorescence in IBI1:YFP samples was compared to background fluorescence of immunoprecipitated samples from un-transformed Col-0 lacking IBI1:YFP protein.

Mass spectrometry detection of Asp and BABA

Solvents used for mass spectrometry (MS) analyses were HPLC and/or MS grade: methanol (MeOH; Fluka; 34966), formic acid (HCOOH; Fluka; 06450), trifluoroacetic acid (TFA; Sigma-Aldrich; 302031), water (H₂O; Waters; 232141B1). Amino acid extraction for Asp quantification was performed from biologically replicated plant material (n=3) as reported previously⁵⁵, with slight modifications: the lyophilised residues were re-suspended into MeOH:H₂O:HCOOH (50:49.9:0.1) and vortexed for 2 min. prior to mass spectrometry

analysis. Mass spectra of Asp were obtained by Matrix-Assisted Laser Desorption/Ionization coupled to quadruple Time Of Flight Mass Spectrometry (MALDI-qTOF-MS) analysis, using a Synapt G2 mass spectrometer (Waters; Manchester; UK) in positive ionization mode ($[M+H]^+$; $m/z = 133.03$) and in 'target enhancement mass' function. MALDI was powered by a solid state laser emitting at 355 nm with a repetition rate of 2.5 kHz. The lock mass for MALDI-qTOF-MS was sulfadoxine methoxide (Fluka; S1950000) and was acquired for 120s, while samples were acquired for 180s, using a spiral pattern with the laser firing conditions optimised at a plate speed of 50Hz and attenuation of 140. Ion acquisition was performed at 10kV with 11kV hexapole bias and 7.0 mm. aperture. Mass ranges of scans (1s) were defined from 50 to 1200 Da. Matrix solution (α -Cyano-4-hydroxycinnamic acid; CHCA; Sigma-Aldrich; C2020) was prepared at $5\text{mg}\cdot\text{mL}^{-1}$ in MeOH:TFA (99.9:0.1). Each standard/sample was mixed with an equal volume of matrix solution (1:1) and spotted (0.2 μL) in triplicate onto 96-well stainless steel MALDI target plates (Waters). In parallel, sulfadoxine methoxide (Fluka; S1950000) was prepared at $10\mu\text{g}\cdot\text{mL}^{-1}$ in MeOH:H₂O (50:50; v/v) and spotted as lock mass for MALDI/TOF-MS analyses ($[M+H]^+$; $m/z=311.08$). Droplets were allowed to dry, using a dry block-heater (Dri-block DB3; Tecam; Italy) at 50°C. Raw data were processed by Masslynx software (v4.1; Waters) and Asp levels were quantified by extrapolating peak areas from a calibration curve, and corrected for fresh weight. Stock solutions of Asp (Sigma-Aldrich; A93100) were prepared in MeOH:H₂O:HCOOH (50:49.9:0.1; v/v) and used for calibration curves.

BABA was detected by both MALDI-qTOF-MS and ESI-qTOF-MS (Zspray™ with NanoLockSpray™; Waters), using a Synapt G2 mass spectrometer in positive ionization mode ($[M+H]^+$ = 104.025) and in 'target enhancement mass' function. Samples from the IBI:YFP pull-down assay (10 μL) were mixed with 10 μL of MeOH:H₂O:HCOOH (50:49.9:0.1; v/v). For MALDI-qTOF-MS, the diluted extract was mixed with 20 μL CHCA matrix ($5\text{mg}\cdot\text{mL}^{-1}$) and analyses were carried out as described above for Asp. For ESI-qTOF-MS, source voltage at the injection capillary was set at 4kV, the sampling cone was set at 20kV and the extraction cone was set at 4kV. Source and desolvation temperatures were set at 120°C and 150°C, respectively. Gas flows were adjusted at 20L/h (cone gas), 0.5Bar (nano-flow gas) and 600L/h (purge and desolvation gas). Each sample was run out at 100nL/min using a syringe pump (SP100iZ; WPI; UK) and data were acquired for 30 min. In parallel, leucine enkephalin ($[M+H]^+$; $m/z=556.08$; Sigma-Aldrich; L9133) at 2 $\mu\text{g}/\text{mL}$ in MeOH:H₂O (50:50; v/v;) was infused as lock mass. Standards of R- and S-BABA (Astatech) were prepared in protein extraction buffer (see above) and diluted to appropriate concentrations with MeOH:H₂O:HCOOH (50:49.9:0.1; v/v) before analysis.

RNA extraction, reverse transcription and quantitative real-time PCR analysis

RNA extraction, cDNA synthesis and quantitative PCR reactions and data analysis was performed as described before^{10,21}. After PCR amplification, melting curve analysis was performed to verify amplification of single PCR products. Relative transcript quantities were calculated according to $(1+E)^{-Ct}$, where $Ct = Ct(\text{sample}) - Ct(\text{calibrator sample})$, and normalised to $(1+E)^{-Ct}$ values of two reference genes, *At1g13440* and *At5g25760*⁵⁶.

Modelling of interactions between BABA enantiomers and Asp-RS proteins

BLAST of Arabidopsis IBI1 (UniProt: Q9M084) against the protein databank (PDB) identified protein crystal structures with a high sequence similarity. Two proteins from *P. pastoris* and *P. kodakaraensis* (PDB codes: 1EOV and 3NEL, respectively) were selected on the basis of sequence similarity and availability of crystal structures. Sequence alignment was performed using the Protein Modelling protocol in Discovery Studio 3.5 (DS)⁵⁷. Crystal structures were prepared for docking studies using the ‘Prepare_Protein’ tools, and binding sites were defined using the ‘Define_and_Edit_Binding_Site’ tool in DS. A 15 angstrom binding sphere was created around previously identified binding residues of 1EOV^{40, 41}, and the co-crystallised asp coordinates in 3NEL. Ligands (L-Asp, R-BABA, and S-BABA) were prepared using the ‘Prepare_Ligands’ tool in DS for generating 3D coordinates and pH-based ionisation forms. Docking was performed using DS CDOCKER, which is a grid-based molecular docking method employing CHARMM⁵⁸. Random ligand conformations were generated from the initial ligand structure, using high temperature molecular dynamics at 1000 K, followed by random rotations. Ligand conformations were optimised using grid-based simulated annealing, followed by a final full force field minimization. Each docked ligand pose was assigned a score, which includes the internal force-field energy of the ligand, conformational entropy loss of the ligand, receptor-ligand hydrogen-bond interaction, solvation electrostatic energy change, hydrogen-bond donor/acceptor desolvation, and hydrophobic energy. Comparisons were made between top-ranked ligand scores, on the basis of generated 3D interaction maps.

Supplementary Material

Refer to Web version on PubMed Central for supplementary material.

ACKNOWLEDGEMENTS

We thank Saskia van Wees, Nigel Halford, John Lucas, John Pickett, Ivo Feussner, Xuebin Zhang, Wouter Kegge, Dusica Acoska, Mike Roberts, Victoria Pastor, Jordi Gamir, Brigitte Mauch-Mani for fruitful discussions, practical assistance, and/or helpful feedback. Arabidopsis NahG B15 and *Ler rpp5* seeds were kindly provided by John Ryals (Research Triangle Park, USA) and Jane Parker (MPI, Cologne), respectively. The research was supported by a VENI grant to J.T. (no. 863.04.019) from the Netherlands Organisation of Scientific Research (NWO), a BBSRC Institute Career Path Fellowship (no. BB/E023959/1) to J.T., a consolidator grant from the European Research Council (ERC; no. 309944-Prime-A-Plant) to J.T., a Research Leadership Award from the Leverhulme Trust (no. RL-2012-042) to J.T., European Union 7th Framework Programme (FP7/2007-2013; n°265865-PURE) to J.T., a grant from the Felix Thornley Cobbold Agricultural Trust to J.T. and E.L. and a VICI grant (no. 865.04.002) to C.M.J.P. from NWO.

REFERENCES

1. Pieterse CMJ, Van der Does D, Zamioudis C, Leon-Reyes A, Van Wees SCM. Hormonal Modulation of Plant Immunity. *Annual Review of Cell and Developmental Biology*. 2012; 28:489–521.
2. Conrath U, et al. Priming: getting ready for battle. *Molecular Plant Microbe Interact*. 2006; 19:1062–71.
3. Pastor V, Luna E, Mauch-Mani B, Ton J, Flors V. Primed plants do not forget. *Environmental and Experimental Botany*. 2013; 94:46–56.
4. Kohler A, Schwindling S, Conrath U. Benzothiadiazole-induced priming for potentiated responses to pathogen infection, wounding, and infiltration of water into leaves requires the NPR1/NIM1 gene in Arabidopsis. *Plant Physiology*. 2002; 128:1046–1056. [PubMed: 11891259]

5. Jung HW, Tschaplinski TJ, Wang L, Glazebrook J, Greenberg JT. Priming in systemic plant immunity. *Science*. 2009; 324:89–91. [PubMed: 19342588]
6. Van Hulst M, Pelser M, van Loon L, Pieterse CMJ, Ton J. Costs and benefits of priming for defense in *Arabidopsis*. *Proceedings of the National Academy of Sciences*. 2006; 103:5602–7.
7. Walters D, Heil M. Costs and trade-offs associated with induced resistance. *Physiological and Molecular Plant Pathology*. 2007; 71:3–17.
8. Ahmad S, Gordon-Weeks R, Pickett J, Ton J. Natural variation in priming of basal resistance: from evolutionary origin to agricultural exploitation. *Molecular Plant Pathology*. 2010; 11:817–827. [PubMed: 21029325]
9. Conrath U. Molecular aspects of defence priming. *Trends In Plant Science*. 2011; 16:524–531. [PubMed: 21782492]
10. Luna E, Bruce TJA, Roberts MR, Flors V, Ton J. Next-Generation Systemic Acquired Resistance. *Plant Physiology*. 2012; 158:844–853. [PubMed: 22147520]
11. Slaughter A, et al. Descendants of Primed *Arabidopsis* Plants Exhibit Resistance to Biotic Stress. *Plant Physiology*. 2012; 158:835–843. [PubMed: 22209872]
12. Beckers GJM, Conrath U. Priming for stress resistance: from the lab to the field. *Current Opinion in Plant Biology*. 2007; 10:425–431. [PubMed: 17644024]
13. Gao QM, Kachroo A, Kachroo P. Chemical inducers of systemic immunity in plants. *J Exp Bot*. 2014
14. Walters DR, Ratsep J, Havis ND. Controlling crop diseases using induced resistance: challenges for the future. *Journal of Experimental Botany*. 2013
15. Cohen YR. β -Aminobutyric Acid-Induced Resistance Against Plant Pathogens. *Plant Disease*. 2002; 86:448–457.
16. Zimmerli L, Jakab G, Métraux J-P, Mauch-Mani B. Potentiation of pathogen-specific defense mechanisms in *Arabidopsis* by β -aminobutyric acid. *Proceedings of the National Academy of Sciences*. 2000; 97:12920–12925.
17. Ton J, et al. Dissecting the beta-aminobutyric acid-induced priming phenomenon in *Arabidopsis*. *The Plant Cell*. 2005; 17:987–99. [PubMed: 15722464]
18. Singh P, et al. The Lectin Receptor Kinase-VI.2 Is Required for Priming and Positively Regulates *Arabidopsis* Pattern-Triggered Immunity. *The Plant Cell Online*. 2012; 24:1256–1270.
19. Návarová H, Bernsdorff F, Döring A-C, Zeier J. Pipecolic Acid, an Endogenous Mediator of Defense Amplification and Priming, Is a Critical Regulator of Inducible Plant Immunity. *The Plant Cell Online*. 2012
20. Ton J, Mauch-Mani B. Beta-amino-butyric acid-induced resistance against necrotrophic pathogens is based on ABA-dependent priming for callose. *The Plant Journal*. 2004; 38:119–30. [PubMed: 15053765]
21. Van der Ent S, et al. Priming of plant innate immunity by rhizobacteria and β -aminobutyric acid: differences and similarities in regulation. *New Phytologist*. 2009; 183:419–431. [PubMed: 19413686]
22. Wu C-C, Singh P, Chen M-C, Zimmerli L. L-Glutamine inhibits beta-aminobutyric acid-induced stress resistance and priming in *Arabidopsis*. *Journal of Experimental Botany*. 2010; 61:995–1002. [PubMed: 20007686]
23. Delaney TP, et al. A Central Role of Salicylic Acid in Plant Disease Resistance. *Science*. 1994; 266:1247–1250. [PubMed: 17810266]
24. Flors V, et al. Interplay between JA, SA and ABA signalling during basal and induced resistance against *Pseudomonas syringae* and *Alternaria brassicicola*. *The Plant Journal*. 2008; 54:81–92. [PubMed: 18088307]
25. Parker JE, et al. The *Arabidopsis* downy mildew resistance gene *RPP5* shares similarity to the toll and interleukin-1 receptors with N and L6. *The Plant Cell*. 1997; 9:879–894. [PubMed: 9212464]
26. Bell CJ, Ecker JR. Assignment of 30 Microsatellite Loci to the Linkage Map of *Arabidopsis*. *Genomics*. 1994; 19:137–144. [PubMed: 8188214]

27. Mauch-Mani B, Slusarenko AJ. Production of Salicylic Acid Precursors Is a Major Function of Phenylalanine Ammonia-Lyase in the Resistance of Arabidopsis to Peronospora parasitica. *The Plant Cell Online*. 1996; 8:203–212.
28. Guo M, Yang XL, Schimmel P. New functions of aminoacyl-tRNA synthetases beyond translation. *Nature Reviews Molecular Cell Biology*. 2010; 11:668–674.
29. Nelson BK, Cai X, Nebenfuhr A. A multicolored set of in vivo organelle markers for co-localization studies in Arabidopsis and other plants. *Plant J*. 2007; 51:1126–36. [PubMed: 17666025]
30. Duchene AM, et al. Dual targeting is the rule for organellar aminoacyl-tRNA synthetases in Arabidopsis thaliana. *Proceedings of the National Academy of Sciences of the United States of America*. 2005; 102:16484–16489. [PubMed: 16251277]
31. Cohen Y. 3-Aminobutyric acid induces systemic resistance against peronospora tabacina. *Physiological and Molecular Plant Pathology*. 1994; 44:273–288.
32. Silue D, Pajot E, Cohen Y. Induction of resistance to downy mildew (*Peronospora parasitica*) in cauliflower by DL-beta-amino-n-butanolic acid (BABA). *Plant Pathology*. 2002; 51:97–102.
33. Cohen Y, Rubin AE, Kilfin G. Mechanisms of induced resistance in lettuce against *Bremia lactucae* by DL-beta-amino-butyric acid (BABA). *European Journal of Plant Pathology*. 2010; 126:553–573.
34. Cavarelli J, et al. The active site of yeast aspartyl-tRNA synthetase: structural and functional aspects of the aminoacylation reaction. *EMBO J*. 1994; 13:327–37. [PubMed: 8313877]
35. Schmitt E, et al. Crystal structure of aspartyl-tRNA synthetase from *Pyrococcus kodakaraensis* KOD: archaeon specificity and catalytic mechanism of adenylate formation. *Embo Journal*. 1998; 17:5227–5237. [PubMed: 9724658]
36. Shrift A, Bechard D, Harcup C. Utilization of Selenocysteine by a Cysteinyl-tRNA Synthetase from *Phaseolus aureus*. *Plant Physiol*. 1976; 58:248–52. [PubMed: 16659657]
37. Ulmasov B, Topin A, Chen Z, He SH, Folk WR. Identity elements and aminoacylation of plant tRNATrp. *Nucleic Acids Research*. 1998; 26:5139–5141. [PubMed: 9801311]
38. Lloyd AJ, Thomann HU, Ibba M, Soll D. A broadly applicable continuous spectrophotometric assay for measuring aminoacyl-tRNA synthetase activity. *Nucleic Acids Res*. 1995; 23:2886–92. [PubMed: 7659511]
39. Cestari I, Stuart K. A Spectrophotometric Assay for Quantitative Measurement of Aminoacyl-tRNA Synthetase Activity. *Journal of Biomolecular Screening*. 2013; 18:490–497. [PubMed: 23134734]
40. Dever TE, Hinnebusch AG. GCN2 whets the appetite for amino acids. *Molecular Cell*. 2005; 18:141–142. [PubMed: 15837415]
41. Li MW, AuYeung WK, Lam HM. The GCN2 homologue in Arabidopsis thaliana interacts with uncharged tRNA and uses Arabidopsis eIF2 α molecules as direct substrates. *Plant Biology*. 2013; 15:13–18. [PubMed: 22672016]
42. Zhang Y, et al. GCN2-dependent phosphorylation of eukaryotic translation initiation factor-2 α in Arabidopsis. *J Exp Bot*. 2008; 59:3131–41. [PubMed: 18603615]
43. Holub EB, Beynon LJ, Crute IR. Phenotypic and Genotypic Characterization of Interactions between Isolates of *Peronospora-Parasitica* and Accessions of Arabidopsis-Thaliana. *Molecular Plant-Microbe Interactions*. 1994; 7:223–239.
44. Guo M, Schimmel P. Essential nontranslational functions of tRNA synthetases. *Nat Chem Biol*. 2013; 9:145–53. [PubMed: 23416400]
45. Ko Y-G, et al. Glutamine-dependent Antiapoptotic Interaction of Human Glutaminyl-tRNA Synthetase with Apoptosis Signal-regulating Kinase 1. *Journal of Biological Chemistry*. 2001; 276:6030–6036. [PubMed: 11096076]
46. Frye CA, Tang D, Innes R.r.W. Negative regulation of defense responses in plants by a conserved MAPKK kinase. *Proceedings of the National Academy of Sciences*. 2001; 98:373–378.
47. Kong Q, et al. The MEKK1-MKK1/MKK2-MPK4 Kinase Cascade Negatively Regulates Immunity Mediated by a Mitogen-Activated Protein Kinase Kinase Kinase in Arabidopsis. *The Plant Cell Online*. 2012; 24:2225–2236.

48. Guo M, Yang XL, Schimmel P. New functions of aminoacyl-tRNA synthetases beyond translation. *Nat Rev Mol Cell Biol.* 2010; 11:668–74. [PubMed: 20700144]
49. Kim, Y.; Schumaker, K.; Zhu, J-K. EMS Mutagenesis of Arabidopsis. In: Salinas, J.; Sanchez-Serrano, J., editors. *Arabidopsis Protocols*. Vol. 323. Humana Press; 2006. p. 101-103.
50. Audenaert K, De Meyer GB, Hofte MM. Abscisic acid determines basal susceptibility of tomato to *Botrytis cinerea* and suppresses salicylic acid-dependent signaling mechanisms. *Plant Physiology.* 2002; 128:491–501. [PubMed: 11842153]
51. Earley KW, et al. Gateway-compatible vectors for plant functional genomics and proteomics. *Plant Journal.* 2006; 45:616–629. [PubMed: 16441352]
52. Lin JJ. Optimization of the Transformation Efficiency of *Agrobacterium-Tumefaciens* Cells Using Electroporation. *Plant Science.* 1994; 101:11–15.
53. Clough SJ, Bent AF. Floral dip: a simplified method for *Agrobacterium*-mediated transformation of *Arabidopsis thaliana*. *Plant Journal.* 1998; 16:735–743. [PubMed: 10069079]
54. Berkowitz O, Jost R, Pollmann S, Masle J. Characterization of TCTP, the Translationally Controlled Tumor Protein, from *Arabidopsis thaliana*. *Plant Cell.* 2008; 20:3430–3447. [PubMed: 19060111]
55. Pétriacq P, et al. Inducible NAD overproduction in *Arabidopsis* alters metabolic pools and gene expression correlated with increased salicylate content and resistance to *Pst-AvrRpm1*. *The Plant Journal.* 2012; 70:650–665. [PubMed: 22268572]
56. Czechowski T, Stitt M, Altmann T, Udvardi MK, Scheible WR. Genome-wide identification and testing of superior reference genes for transcript normalization in *Arabidopsis*. *Plant Physiology.* 2005; 139:5–17. [PubMed: 16166256]
57. Accelrys, SI. *Discovery Studio Modeling Environment*. Release 3.5. San Diego: 2012.
58. Wu GS, Robertson DH, Brooks CL, Vieth M. Detailed analysis of grid-based molecular docking: A case study of CDOCKER - A CHARMM-based MD docking algorithm. *Journal of Computational Chemistry.* 2003; 24:1549–1562. [PubMed: 12925999]

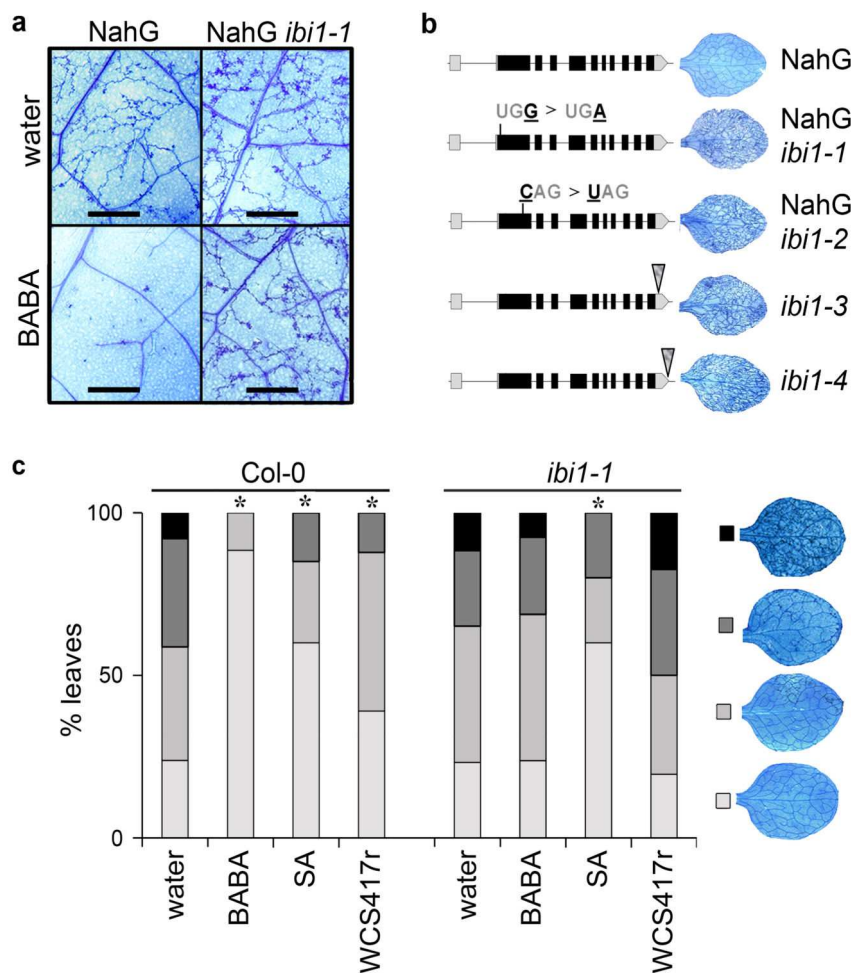


Figure 1. Identification and characterization of the Arabidopsis impaired in *BABA*-induced immunity1 (*ibi1*) mutant

(a) The NahG *ibi1-1* mutant does not express induced resistance against *H. arabidopsidis* WACO9 after root treatment with BABA (150 μ M). Photographs of trypan-blue stained leaves show representative differences in pathogen colonization at 7 days after inoculation. Scale bar = 1 mm. (b) Genomic structure of *IBII* (At4g31180) and locations of *ibi1-1* (EMS), *ibi1-2* (EMS), *ibi1-3* (T-DNA, SALK), and *ibi1-4* (T-DNA, SAIL) mutations. Insets illustrate representative levels of *H. arabidopsidis* colonization in leaves of BABA-treated plants. (c) Levels of induced resistance against *H. arabidopsidis* WACO9 in Col-0 and *ibi1-1* after root treatment with BABA (150 μ M), *Pseudomonas fluorescens* WCS417r (5×10^7 cells/g. soil), or shoot treatment with SA (0.5 mM). Insets show different classes of pathogen colonization; asterisks indicate statistically significant differences in class distribution relative to water-treated plants (Fisher's exact test, $p < 0.01$, $n = 50-100$).

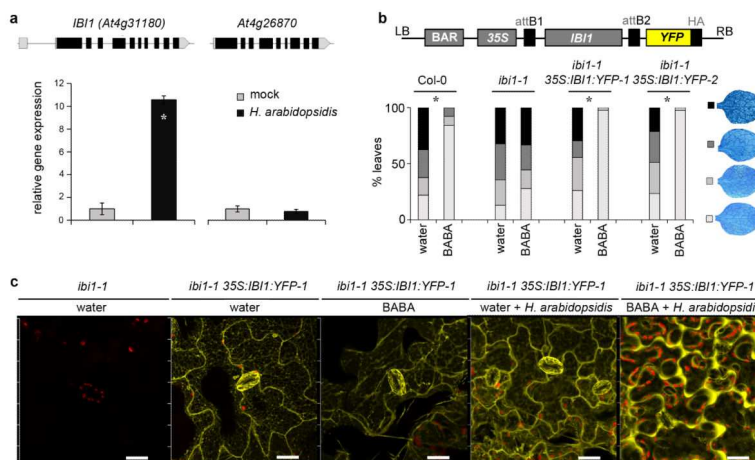


Figure 2. Characterization of the defence function of *IBII*

(a) Transcript accumulation of *IBII* and its close homologue *At4g26870* in Col-0 at 5 dpi with *H. arabidopsidis* WACO9. Data represent average gene expression values (\pm SEM), relative to mock-inoculated plants. Asterisks indicates a statistically significant difference between treatments (Student' s t-test, $p < 0.05$, $n = 3$). **(b)** Transformation of *ibi1-1* with *35S:IBII:YFP* restores induced resistance against *H. arabidopsidis* WACO9 after root treatment with BABA (150 μ M). Insets show different classes of pathogen colonization; asterisks indicate statistically significant differences in class distribution relative to water-treated plants (Fisher' s exact test, $p < 0.01$, $n = 50-100$). **(c)** Confocal laser-scanning microscopy analysis of subcellular *IBII:YFP* in *35S:IBII:YFP-1* plants at 2 days after root treatment with water or BABA (150 μ M), and 5 days after subsequent *H. arabidopsidis* WACO9 inoculation. Yellow indicates fluorescence by *IBII:YFP*; red indicates chlorophyll fluorescence from chloroplasts. Left panel shows lack of YFP fluorescence in untransformed *ibi1-1* plants. Scale bar = 20 μ m.

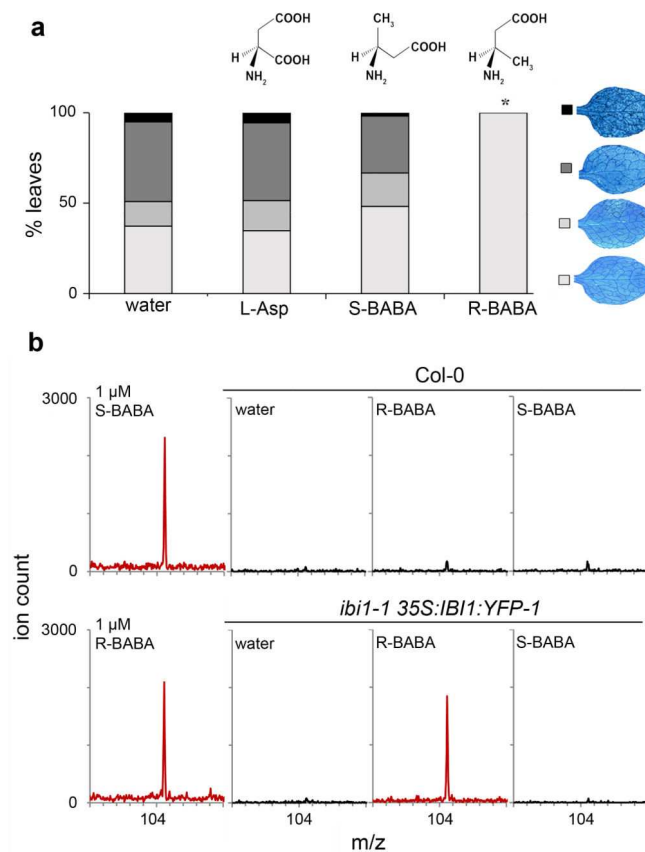


Figure 3. Enantiomer-specific activity of BABA to IBII

(a) Levels of induced resistance against *H. arabidopsidis* WACO9 in Arabidopsis (Col-0) after root treatment with L-Asp (150 μ M), R-BABA (150 μ M), or S-BABA (150 μ M). Insets show different classes of pathogen colonization; asterisk indicates a statistically significant difference in class distribution relative to water-treated plants (Fisher's exact test, $p < 0.01$, $n = 50-100$). **(b)** Mass spectrometry analysis of BABA from immunoprecipitated IBII:YFP of *ibi1-1 35S:IBI1:YFP-1* or un-transformed Col-0 (negative control), using MALDI-qTOF ($[M+H]^+$; $m/z = 104,025$). Left panels show standards (R-BABA and S-BABA; 1 μ M). Immunoprecipitation (IP) was performed with protein extracts from leaves after two successive root treatments with water (control), R-BABA (1.2 mM), or S-BABA (1.2 mM). MALDI-qTOF analysis of IP extracts from *ibi1-1 35S:IBI1:YFP-1* plants after R- or S-BABA applications was repeated twice from material of independent experiments, yielding similar results.

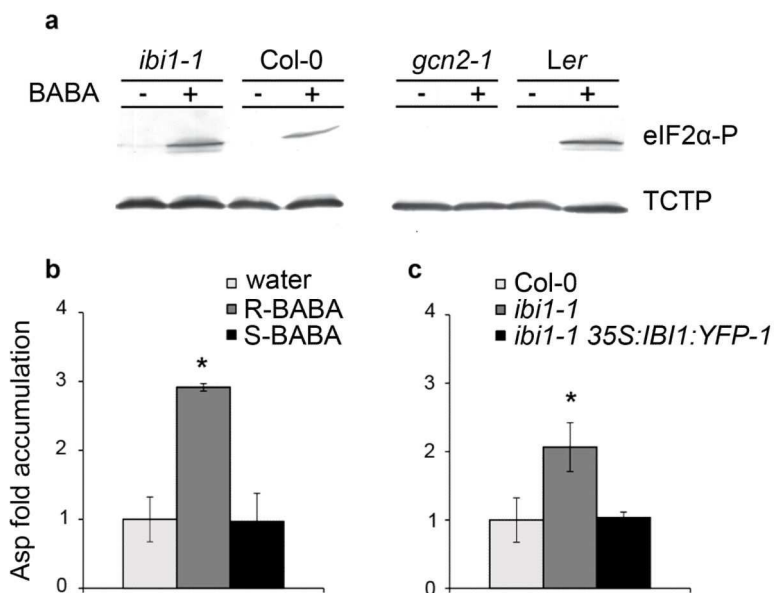


Figure 4. BABA interferes with canonical AspRS activity

(a) Western blot analysis of eIF2α phosphorylation (Ser51) and TCTP (loading control) in *ibi1-1*, Col-0, *gcn2-1* and Ler at 2 days after spraying the leaves with BABA (250 μM). (b) MALDI-qTOF quantification of Asp levels in leaves of Col-0 at 2 days after root treatment with water, R-BABA (250 μM), or S-BABA (250 μM). (c) MALDI-qTOF quantification of Asp levels in leaves of Col-0, *ibi1-1* and *ibi1-1 35S:IBI1:YFP-1*. Data in (b) and (c) represent average fold-change values in comparison to basal Asp levels in water-treated Col-0. Asterisks indicate statistically significant differences in comparison to water-treated Col-0 (Student's t-test, $p < 0.05$, $n = 3-5$).

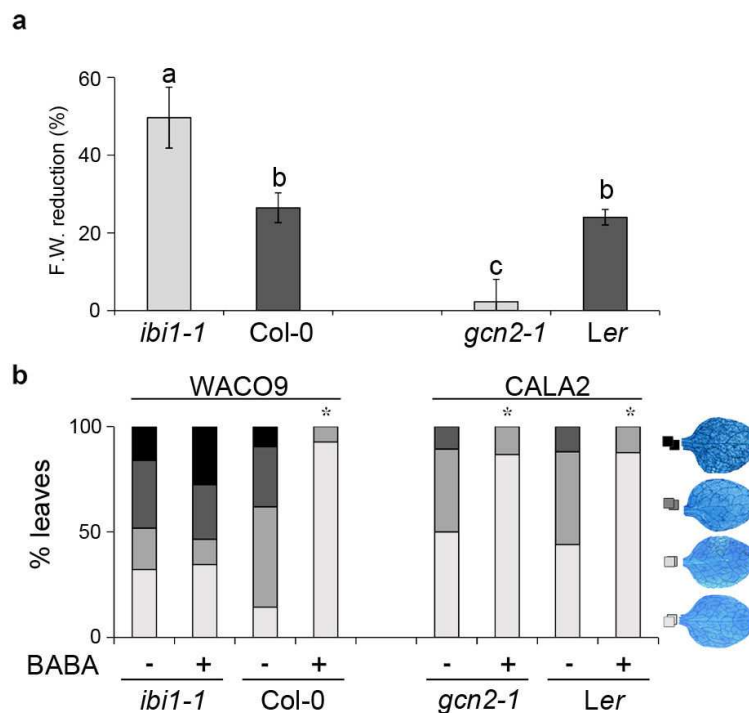


Figure 5. Genetic separation of BABA-IR and growth repression

(a) BABA-induced growth suppression in *ibi1-1*, Col-0, *gcn2-1* and Ler at 1 week after root treatment with BABA (400 μ M). Shown are mean percentages (\pm SEM) of fresh weight (F.W.) reduction in BABA-treated plants relative to water-treated plants. Different letters indicate statistically significant differences between genotypes (Fisher' s least significant differences test; $p < 0.05$). **(b)** Levels of induced resistance against *H. arabidopsidis* WACO9 (Col-0 and *ibi1-1*) and *H. arabidopsidis* CALA2 (Ler and *gcn2-1*) after root treatment with BABA (150 μ M). Insets show different classes of pathogen colonization; asterisks indicate statistically significant differences in class distribution relative to water-treated plants (Fisher' s exact test $p < 0.01$, $n = 50-100$). (Fisher' s exact test $p < 0.01$, $n = 50-100$).

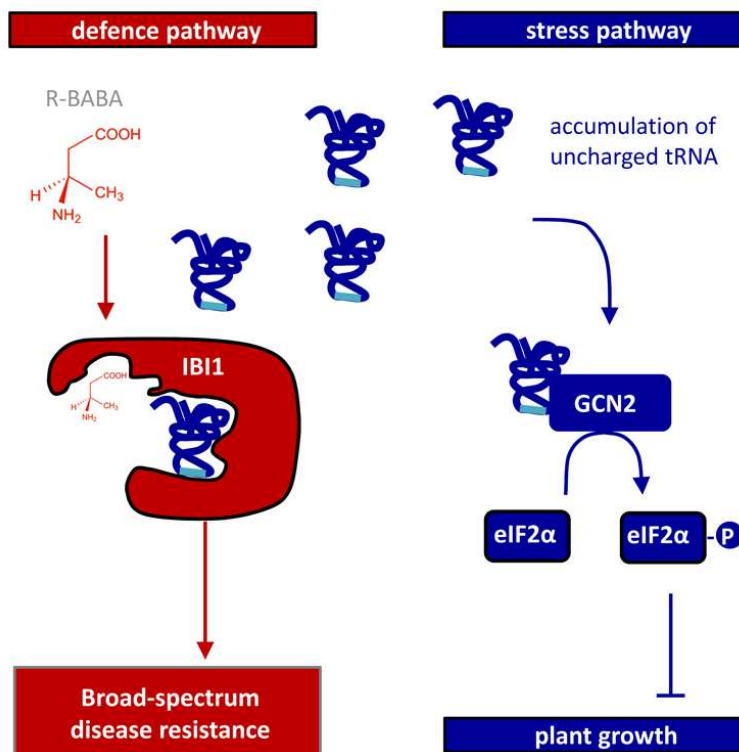


Figure 6. The BABA receptor IBI1 controls BABA-IR and plant growth suppression via separate pathways

Binding of the R-enantiomer of BABA to the L-Asp-binding site of IBI1 blocks canonical aspartyl-tRNA synthetase (AspRS) activity, which primes the protein for pathogen-inducible defence activity in the cytoplasm (red). Concurrently, the inhibitory activity of R-BABA on AspRS activity leads to accumulation of uncharged tRNAs, which triggers GCN2-dependent phosphorylation of the translation initiation factor eIF2 α and suppression of plant growth (blue).