



UNIVERSITY OF LEEDS

This is a repository copy of *The benefits and harms of different extents of lymph node dissection during radical prostatectomy for prostate cancer: a systematic review*.

White Rose Research Online URL for this paper:
<http://eprints.whiterose.ac.uk/110393/>

Version: Accepted Version

Article:

Fossati, N, Willemse, P-PM, Van den Bergh, RCN et al. (19 more authors) (2017) The benefits and harms of different extents of lymph node dissection during radical prostatectomy for prostate cancer: a systematic review. *European Urology*, 72 (1). pp. 84-109. ISSN 0302-2838

<https://doi.org/10.1016/j.eururo.2016.12.003>

© 2016 European Association of Urology. Published by Elsevier B.V. This manuscript version is made available under the CC-BY-NC-ND 4.0 license
<http://creativecommons.org/licenses/by-nc-nd/4.0/>

Reuse

See Attached

Takedown

If you consider content in White Rose Research Online to be in breach of UK law, please notify us by emailing eprints@whiterose.ac.uk including the URL of the record and the reason for the withdrawal request.



eprints@whiterose.ac.uk
<https://eprints.whiterose.ac.uk/>

Figures

Figure 1. Anatomical areas for the definition of the extent of dissection.

I: obturator nodes.

II: external iliac nodes.

III: internal iliac nodes.

IV: common iliac nodes

V: pre-sacral nodes.

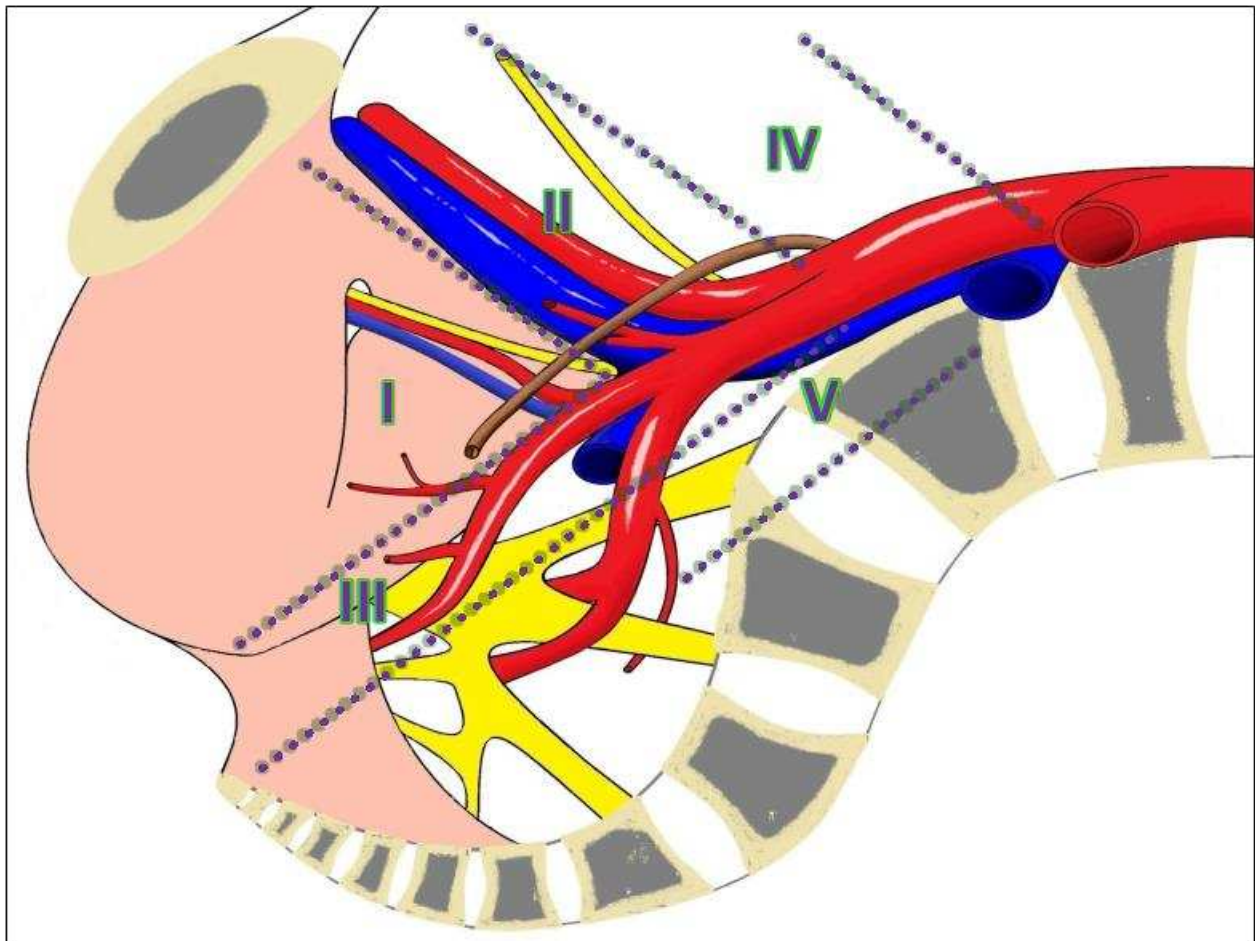
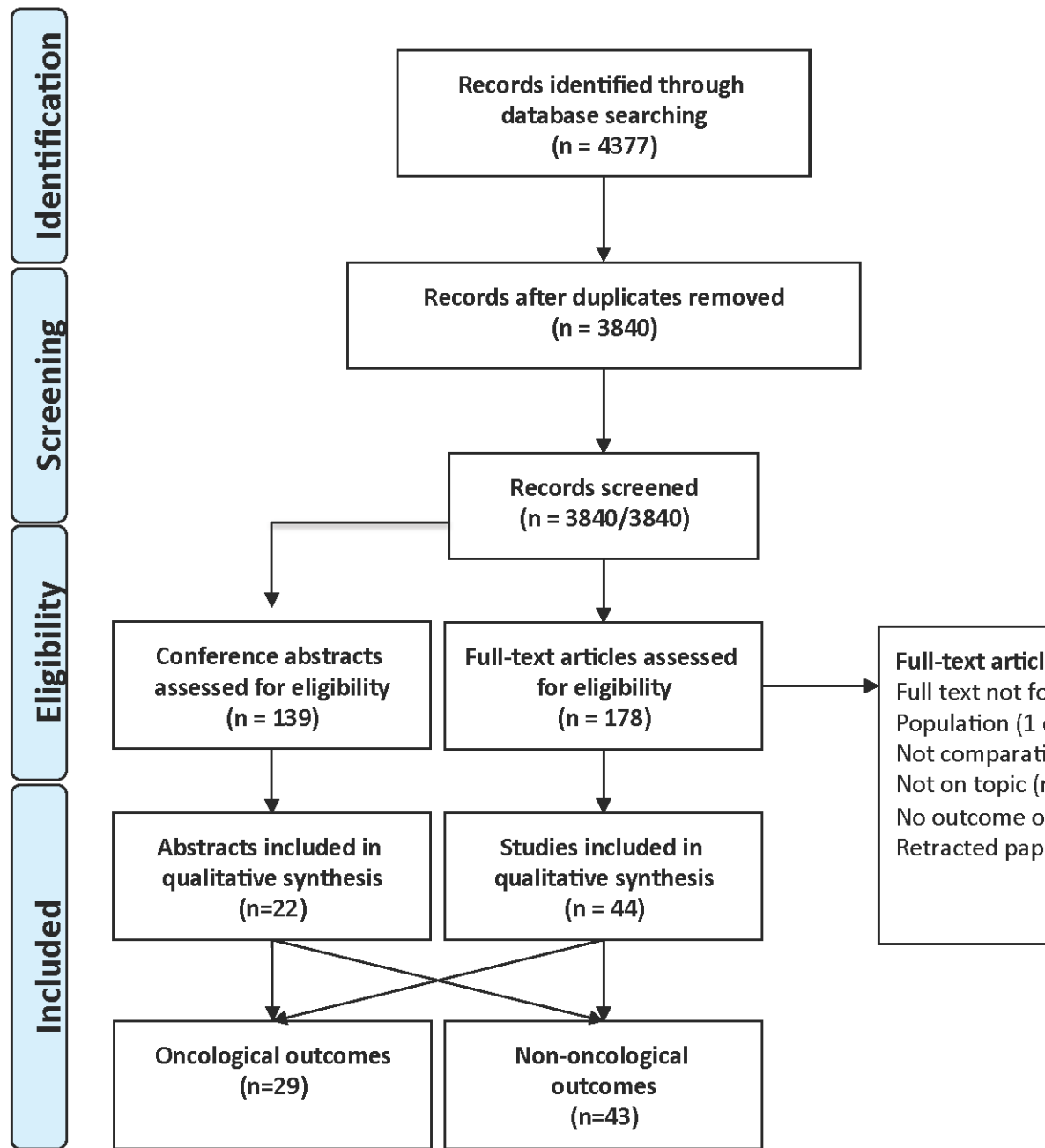


Figure 2:



Figs 3a –b and 4a –b

Fig 2a: Risk of bias assessment for individual studies – oncological outcomes

	Random sequence generation (selection bias)	Allocation concealment (selection bias)	Blinding of participants and personnel (performance bias)	Blinding of outcome assessment (detection bias)	Incomplete outcome data (attrition bias)	Selective reporting (reporting bias)	Other bias	cT stage considered/measured?	cT stage corrected for?	pT stage considered/measured?	pT stage corrected for?	pGS considered/measured?	pGS corrected for?	Adjuvant therapy considered/measured?	Adjuvant therapy corrected for?	Risk stratification considered/measured?	Risk stratification corrected for?
Abdollah F 2014 (Abstract)	+	+	+	+	?	?	?	+	+	+	+	+	+	+	+	+	+
Allaf ME 2004 (NRS)	+	+	+	+	?	?	?	+	+	?	?	+	+	+	+	+	+
Berglund RK 2007 (NRS)	+	+	+	+	?	?	?	+	+	+	+	+	+	+	+	+	+
Bhatta-Dhar N 2004 (NRS)	+	+	+	+	?	?	?	+	+	+	+	+	+	+	+	+	+
Boehm K 2015 (NRS)	+	+	+	+	?	?	?	+	+	+	+	+	+	+	+	+	+
Chang M 2013 (Abstract)	+	+	+	+	?	?	?	+	+	+	+	+	+	+	+	+	+
Chen YW 2015 (Abstract)	+	+	+	+	?	?	?	+	+	+	+	+	+	+	+	+	+
Daimon T 2012 (NRS)	+	+	+	+	?	?	?	+	+	+	+	+	+	+	+	+	+
De Almeida Prado Costa G 2013 (Abstract)	+	+	+	+	?	?	?	+	+	+	+	+	+	+	+	+	+
Fergany A 2000 (NRS)	+	+	+	+	?	?	?	+	+	+	+	+	+	+	+	+	+
Gandaglia G 2015 (NRS)	+	+	+	+	?	?	?	+	+	+	+	+	+	+	+	+	+
Hatzichristodoulou G 2015 (NRS)	+	+	+	+	?	?	?	+	+	+	+	+	?	+	+	+	+
Jung JH 2012 (NRS)	+	+	+	+	?	?	?	+	+	+	+	+	+	+	+	+	+
Karl A 2015 (NRS)	+	+	+	+	?	?	?	+	+	+	+	+	+	+	+	+	+
Kim KH 2013 (NRS)	+	+	+	+	?	?	?	+	+	+	+	+	+	+	+	+	+
Koo KC 2015 (NRS)	+	+	+	+	?	?	?	+	+	+	+	+	+	+	+	?	+
Ku JH 2011 (NRS)	+	+	+	+	?	?	?	+	?	+	+	+	+	+	+	+	+
Lesting J 2015 (RCT) (Abstract)	?	?	?	?	+	+	?	+	+	+	+	+	+	+	+	+	+
Liss MA 2013 (NRS)	+	+	+	+	?	?	?	+	+	+	+	+	+	+	+	+	+
Logan J 2011 (Abstract)	+	+	+	+	?	?	?	+	+	+	+	+	+	+	+	+	+
Masuda H 2013 (NRS)	+	+	+	+	?	?	?	+	+	+	+	+	+	+	+	+	+
Mitsuzuka K 2013 (NRS)	+	+	+	+	?	?	?	+	+	+	+	+	+	+	+	+	+
Nyushko KM 2013 (Abstract)	+	+	+	+	?	?	?	+	+	+	+	+	+	+	+	+	+
Nyushko KM 2014 (Abstract)	+	+	+	+	?	?	?	+	+	+	+	+	+	+	+	+	+
Ost P 2012 (NRS)	+	+	+	+	?	?	?	+	+	?	?	+	+	+	+	+	+
Pokala N 2013 (Abstract)	+	+	+	+	?	?	?	+	+	+	?	+	+	+	+	+	+
Porter CR 2010 (NRS)	+	+	+	+	?	?	?	+	+	+	+	+	+	+	+	+	+
Weight CJ 2008 (NRS)	+	+	+	+	?	?	?	+	+	+	+	+	+	+	+	+	+
Yuh B 2015 (Abstract)	+	+	+	+	?	?	?	+	+	?	?	+	+	+	?	+	+

Fig 2b. Risk of bias assessment for individual studies – non-oncological outcomes

Fig 3a. Risk of bias assessment across included studies – oncological outcomes

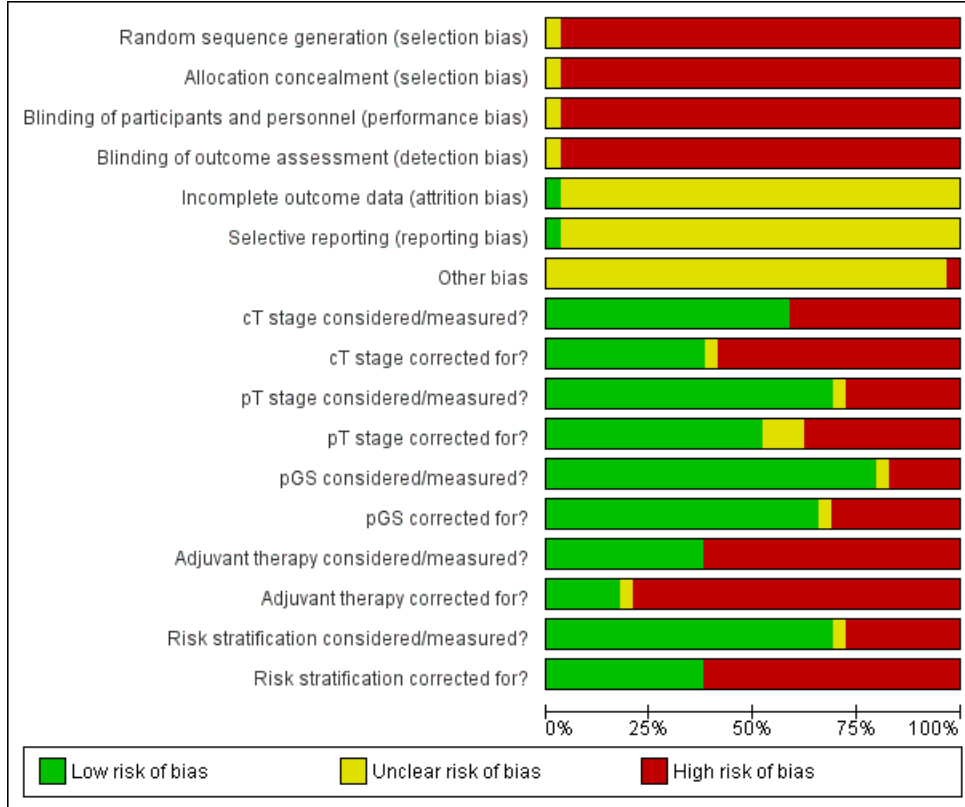


Fig 3b: Risk of bias assessment across included studies – non-oncological outcomes

