



Deposited via The University of Leeds.

White Rose Research Online URL for this paper:

<https://eprints.whiterose.ac.uk/id/eprint/104013/>

Version: Supplemental Material

Article:

Mathew, AJ, Coates, LC, Danda, D et al. (2016) Psoriatic arthritis: Lessons from imaging studies and implications for therapy. *Expert Review of Clinical Immunology*, 13 (2). pp. 133-142. ISSN: 1744-666X

<https://doi.org/10.1080/1744666X.2016.1215245>

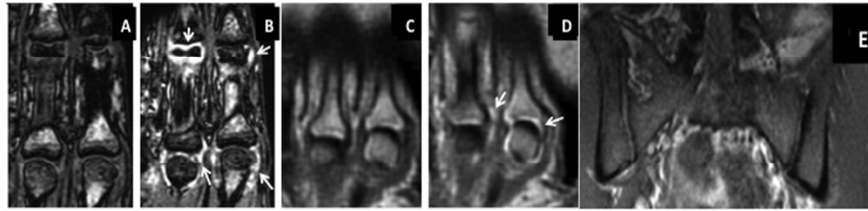
This is an author produced version of a paper published in *Expert Review of Clinical Immunology*. Uploaded in accordance with the publisher's self-archiving policy.

Reuse

Items deposited in White Rose Research Online are protected by copyright, with all rights reserved unless indicated otherwise. They may be downloaded and/or printed for private study, or other acts as permitted by national copyright laws. The publisher or other rights holders may allow further reproduction and re-use of the full text version. This is indicated by the licence information on the White Rose Research Online record for the item.

Takedown

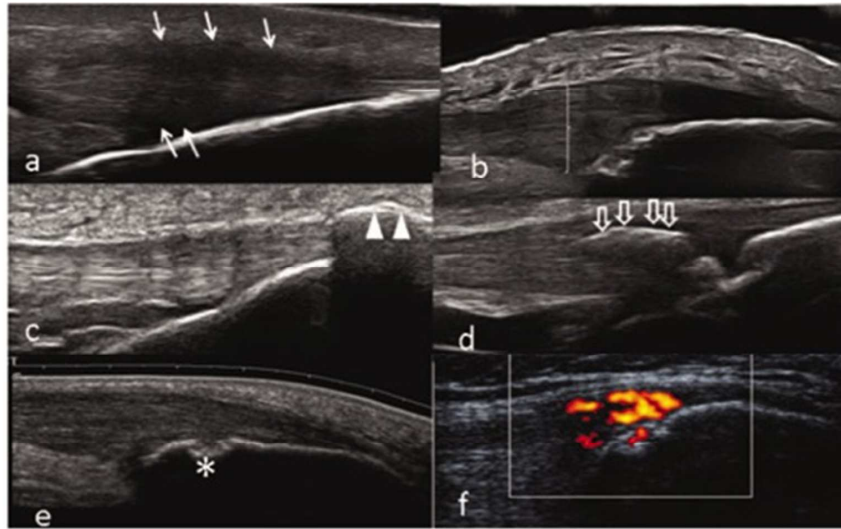
If you consider content in White Rose Research Online to be in breach of UK law, please notify us by emailing eprints@whiterose.ac.uk including the URL of the record and the reason for the withdrawal request.



Whole body MRI in a patient with PsA (Adapted from Reference 44, with permission)
A - pre- and B - post-contrast coronal T1W conventional MR images of the left hand joints showing synovitis (arrows) at 2nd and 3rd MCP and PIP joints.
C - pre- and D - post-contrast WBMRI coronal images of the left hand depicting synovitis at 2nd and 3rd MCP joints.
E - WBMRI T1w coronal image of SI joints with no erosions.

254x190mm (72 x 72 DPI)





B mode and PD US images of enthesopathy (Adapted from Terslev L, et al. Arthritis Care Res 2014;66:741-48; with permission).

- a - Hypoechoic region indicating increase in thickness of the tendon.
- b - Line shows increase in thickness of tendon at insertion.
- c - Slight elevation of the bone contour at the end, marked by white arrow heads, denoting enthesophytes.
- d - Hyperechoic focus marked by arrows, denoting calcifications.
- e - Irregular margins caused by bone erosions at the enthesis.
- f - PD activity at the enthesis, close to bone insertion.

205x125mm (72 x 72 DPI)