

This is a repository copy of *Has the 'Fast-Track' referral system affected the route of presentation and/or clinical outcomes in patients with colorectal cancer?*.

White Rose Research Online URL for this paper:

<https://eprints.whiterose.ac.uk/102886/>

Version: Published Version

---

**Article:**

Thornton, Luke, Reader, Harriet, Stojkovic, Stevan et al. (2 more authors) (2016) Has the 'Fast-Track' referral system affected the route of presentation and/or clinical outcomes in patients with colorectal cancer? *World Journal of Surgical Oncology*. 158. ISSN 1477-7819

<https://doi.org/10.1186/s12957-016-0911-8>

---

**Reuse**

This article is distributed under the terms of the Creative Commons Attribution (CC BY) licence. This licence allows you to distribute, remix, tweak, and build upon the work, even commercially, as long as you credit the authors for the original work. More information and the full terms of the licence here:

<https://creativecommons.org/licenses/>

**Takedown**

If you consider content in White Rose Research Online to be in breach of UK law, please notify us by emailing [eprints@whiterose.ac.uk](mailto:eprints@whiterose.ac.uk) including the URL of the record and the reason for the withdrawal request.

RESEARCH

Open Access



# Has the 'Fast-Track' referral system affected the route of presentation and/or clinical outcomes in patients with colorectal cancer?

Luke Thornton<sup>1\*</sup>, Harriet Reader<sup>1</sup>, Stevan Stojkovic<sup>2</sup>, Victoria Allgar<sup>1</sup> and Nick Woodcock<sup>2</sup>

## Abstract

**Background:** The aim of this study is to determine whether the 'Fast-Track' referral system has changed the route by which patients present with colorectal cancer (CRC) and whether the route of presentation has any effect on clinical outcome.

**Methods:** A retrospective cohort study of patients diagnosed with CRC under the care of two consultant colorectal surgeons between April 2006 and December 2012. The route by which patients presented was categorised as Fast-Track (FT), non-Fast-Track (non-FT) or acute. Outcome variables were operative intent, disease stage and 2- and 5-year survival.

**Results:** A total of 558 patients were identified. One hundred ninety-seven patients (35.3 %) were referred as FT, 108 (19.4 %) presented acutely and 253 patients (45.3 %) presented via other routes (non-FT). Over the study period, the route of presentation did not change significantly ( $P = 0.135$ ). There was no significant difference between FT and non-FT groups in terms of the proportion of patients undergoing potentially curative surgery (70.6 vs 74.3 %,  $P = 0.092$ ) or with node-negative disease (48.2 vs 52.2 %,  $P = 0.796$ ) nor was there any difference in 2-year or 5-year survival (74.1 vs 73.9 %,  $P = 0.837$  and 52.3 vs 53.8 %,  $P = 0.889$ , respectively). Patients who presented acutely were less likely to undergo curative resection, had more advanced disease and had worse 2- and 5-year survival.

**Conclusions:** The Fast-Track referral system has not affected the route by which patients present with CRC nor has it had any effect on clinical outcomes. Alternative strategies are required if the desired improvement in outcomes is to be achieved.

**Keywords:** Colorectal, Cancer, General, Surgery, Outcomes, Survival

## Background

Colorectal cancer (CRC) is the fourth most common cancer and the second commonest cause of cancer-related death in the UK, with over 40,000 new cases and approximately 16,000 deaths per year [1–3]. The current 5-year survival in the UK is 54.4 % in men and 55.1 % in women, but as high as 90 % if diagnosed at its earliest stage (Dukes' A) [4]. This compares unfavourably with elsewhere in Europe, where survival rates are 8–12 %

higher [5]. This disparity is perceived as being due to a reluctance of patients to consult their GP with bowel-related symptoms, delays in referral of patients from primary to secondary care and/or delays in both investigation and subsequent treatment once referred [6].

In 2000, the UK Department of Health introduced the 'Fast-Track' or 'Two Week Wait' system for patients with suspected cancer [7], in an attempt to address some of these issues. This system applies to all the common cancers, including CRC. For patients fulfilling any of the agreed referral criteria, the GP completes a standardised referral proforma (Fig. 1). Patients referred in this way

\* Correspondence: luke.thornton@doctors.org.uk

<sup>1</sup>Hull York Medical School, York University Heslington, York YO10 5DD, UK  
Full list of author information is available at the end of the article



**PROFORMA FOR URGENT REFERRAL FOR COLORECTAL PATIENTS WITH SYMPTOMS SUGGESTIVE OF CANCER**

Date of Referral	Referral date	Referring GP	Sender title and full name
Patient Name	Forename Surname	Address	Sender address building
Address	Patient address house		Sender address road
	Patient address road		Sender address post town
	Patient address post town		
Postcode	Patient post code	Postcode	Sender post code
Age/DOB	Patient Age Date of birth	Fax No	Registered GP fax number
Tel No	Patient preferred telephone	Tel No	Registered GP phone number
NHS No	NHS number	Hospital No	

Is the patient aware of the possible diagnosis of cancer? YES  NO

2 week wait patient information leaflet given? YES  NO

Is the patient available and willing to attend an appointment within the next 2 weeks? YES  NO

**Please tick any of the criteria listed below that match the patient's symptoms**

The following symptom and sign combinations WHEN OCCURRING FOR THE FIRST TIME, not as a recurrent episode, are the high risk criteria for referral. Patients who do not fulfil any of these criteria should be referred as a non fast track.

- Rectal bleeding WITH a change in bowel habit to looser stools and/or increased frequency of defaecation persistent for 6 weeks Over 40 years
- Looser stools and/or increased frequency of defaecation persistent for 6 weeks WITHOUT rectal bleeding Over 60 years
- Rectal bleeding persistently WITHOUT anal symptoms\* Over 60 years
- A definite palpable right-sided abdominal mass All ages
- A definite palpable rectal mass (not pelvic) All ages
- Iron deficiency anaemia: :below 10 grams post-menopausal women
- :below 11 grams all men

Iron deficiency with or without anaemia **NOT** fulfilling these criteria should be referred to gastroenterology.

\* Anal symptoms include soreness, discomfort, itching, lumps and prolapse as well as pain

Any additional comments:

Please also attach a **brief** computer summary of the patient's history

Fig. 1 Fast-Track referral proforma

and then have to be seen in secondary care within 14 days of referral, and if they are subsequently diagnosed with CRC, they have to commence treatment within 62 days of the original GP referral. These targets have inevitably exerted a considerable strain on resources in secondary care. Further, a large proportion of patients with CRC present via other routes: non-Fast-Track referrals to the colorectal clinic and other specialties, e.g. Gastroenterology, the National Bowel Cancer Screening Programme and emergency admissions.

The aims of this study were to (1) determine whether the Fast-Track system has changed the route by which

patients present with CRC and (2) assess whether the route of presentation has any effect on outcomes, in terms of treatment intent, disease stage or survival.

**Methods**

All patients diagnosed with CRC under the care of two consultant colorectal surgeons between April 2006 and December 2012 were identified from the responsible consultants' personal prospective databases. For each patient, the following variables were recorded: age, gender, route of referral, treatment intent (curative or palliative), disease stage, and survival at 2 and 5 years. All research

carried out is in compliance with the Helsinki Declaration. Study is approved by the York District Hospital Clinical Effectiveness Team.

### Statistical analysis

Chi-squared tests were used to compare categorical variables and ANOVA or independent *t* tests for continuous variables. Kaplan-Meier curves were undertaken for survival data, with a log-rank test to compare referral groups. Cox regression was used to investigate survival, adjusting for age, sex and stage. All analyses were undertaken on SPSS (v20). A *P* value of <0.05 was considered to indicate statistical significance.

### Results

A total of 558 patients with newly diagnosed CRC were identified, of which 310 patients (55.6 %) were male, with a median age of 73 years (IQR 64–80 years). Overall, 197 patients (35.3 %) were referred as a Fast-Track ('FT' group), 108 (19.4 %) presented acutely ('acute' group) and 253 patients (45.3 %) presented via other routes ('non-FT' group) (Table 1). The relatively small number of patients diagnosed through the National Bowel Cancer Screening Programme is explained by the fact that it commenced in York only in February 2010.

The numbers of Fast-Track referrals per year are shown in Fig. 2. There was an almost threefold increase from 551 in 2006 to 1425 in 2012. Over this time, there did appear to be a slight increase in the proportion of CRC patients referred as Fast-Tracks, with a concomitant reduction in numbers of patients presenting acutely, though these changes were not statistically significant (*P* = 0.135) (see Fig. 3).

A similar proportion of patients in the FT and non-FT groups underwent potentially curative surgery (70.6 vs 74.3 %, *P* = 0.092), whereas significantly fewer acute patients (50.9 %) underwent curative surgery (*P* < 0.001). Similarly, equivalent proportions of FT and non-FT patients had node-negative disease (48.2 vs 52.2 %, *P* = 0.796), whereas the proportion of acute patients with node-negative disease (27.8 %) was significantly lower (*P* < 0.0001).

The overall mean survival for all patients was 57.8 months. Mean survival in the FT group was 52.7 months, compared

to 64.1 months in the non-FT group (*P* = 0.912). However, mean survival in the acute patients was significantly lower (28.0 months, *P* < 0.001). Cumulative survival for each of the groups is shown in Fig. 4. There was no significant difference between the FT and non-FT groups in terms of either 2-year overall survival (74.1 vs 73.9 %, *P* = 0.837) or 5-year overall survival (52.3 vs 53.8 %, *P* = 0.889). However, both 2- and 5-year overall survival were significantly lower in the acute group (38.2 %, *P* < 0.001 and 23.7 %, *P* < 0.001, respectively).

### Discussion

This study has shown that the Fast-Track system has not affected the route by which patients present with colorectal cancer. In particular, there has been no reduction in the proportion of patients presenting acutely. Further, CRC patients referred as a Fast-Track appear to do no better in terms of curative surgery, disease stage or survival when compared to non-Fast-Track patients, whereas those patients undergoing emergency surgery do significantly worse.

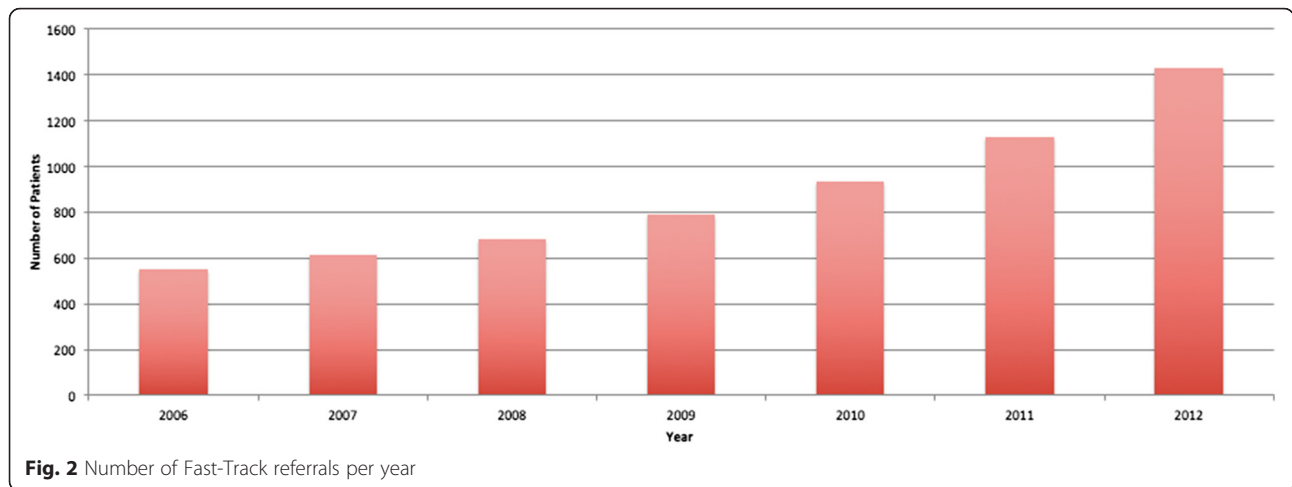
The Fast-Track system was introduced to guarantee that patients with symptoms suggestive of CRC are seen and investigated promptly when referred by their general practitioner. Once diagnosed, the patients are subsequently treated sooner than they would otherwise have been, with the expectation that this will improve outcomes. There has been an inexorable rise in the number of Fast-Track referrals over the last few years: in the current study, there was an almost threefold increase between 2006 and 2012. This has placed an inevitable strain on resources in secondary care. Having to process such large numbers of referrals in a timely manner has encouraged hospital trusts to adopt various investigative models, such as 'straight-to-test'. Such pathways are largely dictated by the needs of the local population and the resources available. In York, all Fast-Track referrals are seen in a designated clinic within 2 weeks, where they are assessed by a surgeon, and a decision made regarding the most appropriate investigation(s).

It is important to remember that only about 10 % of Fast-Track patients actually have CRC [8, 9], and in the current study, only just over a third of CRC patients were referred as a Fast-Track. With such emphasis placed on meeting the Fast-Track waiting time targets, it is vital that this is not to the detriment of the majority of CRC patients who are not referred as a Fast-Track, whose investigations and/or treatment could otherwise potentially be delayed [10].

Bevis et al. similarly reported no significant differences between Fast-Track and non-Fast-Track patients in terms of the proportion of patients undergoing potentially curative surgery or disease stage [11], whereas other studies found that Fast-Track patients actually had more advanced disease [8, 9]. Further studies looking at survival found no difference at either 2 years [12] or 5 years [13].

**Table 1** Route of presentation

Route of presentation	No. of patients (%)
Fast-Track	197 (35.3 %)
Non-Fast-Track	253 (45.3 %)
Gastroenterology	112
Colorectal clinic	87
NBCSP	21
Other	33
Acute	108 (19.4 %)

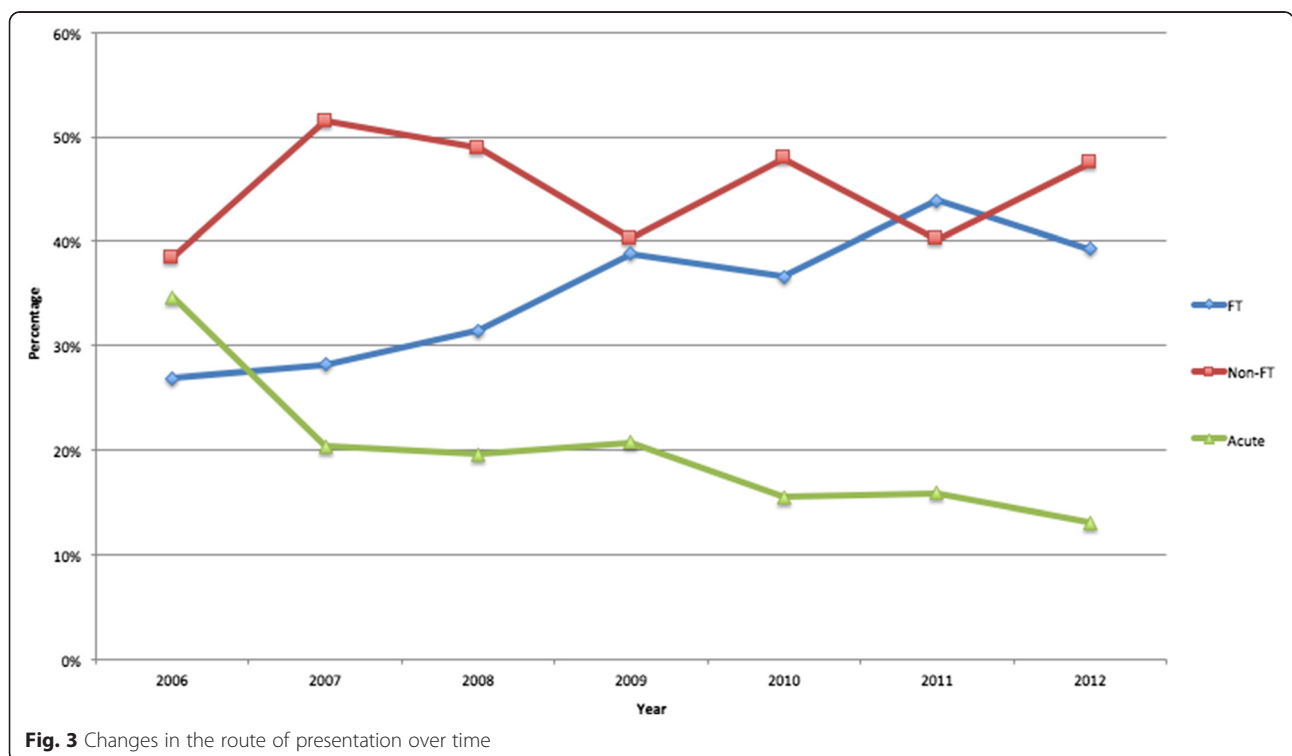


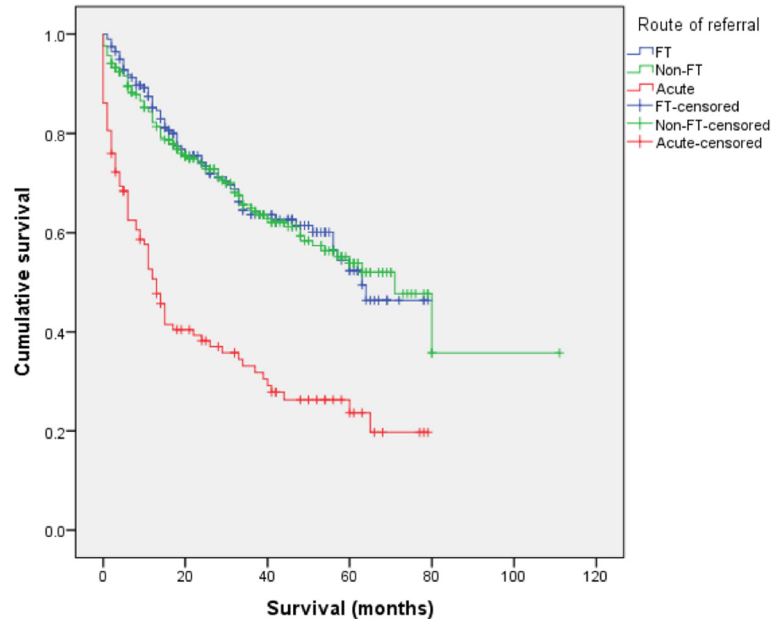
Zafar et al. compared overall 5-year survival prior to and following the introduction of the Fast-Track system and found no difference [14].

There are various possible reasons as to why the Fast-Track system appears to be failing to achieve its aim of improving outcomes. The first possibility is that patients are being referred inappropriately. To increase sensitivity, the referral criteria are necessarily rather vague and open to interpretation. This inevitably reduces specificity, with consequent referral of significant numbers of patients with functional bowel disease and the ‘worried well’. Further, many patients do not actually fulfil the referral criteria.

Chohan et al. found that only 73 % of Fast-Track referrals fulfilled the criteria, whereas 92 % of the patients subsequently diagnosed with CRC did so [8]. Conversely, patients with CRC who do fulfil the Fast-Track criteria frequently are not referred accordingly [15].

Patients referred via the Fast-Track route are undoubtedly investigated more quickly and undergo treatment sooner, but the difference is relatively small. In the study by Zafar et al., the median time from referral to treatment prior to the introduction of the Fast-Track system was 115 days, compared to 76 days after [14]. Another study comparing Fast-Track and non-Fast-Track patients





**Fig. 4** Cumulative survival

demonstrated a significant reduction in both time to be seen by a colorectal specialist (median 31 vs 69 days) and time to initiation of treatment (median 42.5 vs 57.5 days) [11]. Whilst these differences are statistically significant, such modest reductions in time to treatment are unlikely to have a clinically significant impact on outcome.

Arguably more important delays occur prior to referral to secondary care. Patients are often reluctant to consult their GP with bowel-related symptoms, due to embarrassment, fear or ignorance. A recent study reported that 61 % of patients with rectal bleeding had thoughts about cancer, compared with only 29 % of those without rectal bleeding [16]. Alternatively, there may be a failure on the part of the GP to refer. Khattak et al. found that 79 % of patients who presented acutely with CRC had previously consulted their GP with symptoms, and in 38 % of all patients, it was more than 6 weeks before they were referred [17]. A further study looking at delays in diagnosis for various cancer types found breast cancer to have the shortest delay in presentation and suggested that this may be due to more obvious symptoms that are easily understood by patients, together with a high-profile national screening programme [18]. If this is true, then the National Bowel Cancer Screening Programme of faecal occult blood testing, plus impending flexible sigmoidoscopy screening, should hopefully serve to increase public awareness of the disease. Further, the recent 'Be Clear on Cancer' campaign, consisting of adverts on television, radio and in national newspapers and magazines, was introduced to raise public awareness of the symptoms of the disease, encourage patients to consult their GP and increase referrals to secondary care.

The most effective way of improving clinical outcomes must be to reduce the number of patients presenting as an emergency with CRC, in whom both short- and long-term outcomes are significantly worse. In the current study, we observed no significant change in the proportion of patients presenting acutely, despite a massive increase in the numbers of patients being referred as Fast-Tracks. This concurs with the latest National Bowel Cancer Audit Annual Report, in which the proportion of patients presenting acutely with CRC was 20.6 %, a figure that has remained frustratingly static over the last few years [19].

It would have been useful to be able to compare outcomes to those achieved prior to the introduction of the Fast-Track system in 2000, but the two surgeons whose patients are included did not commence their posts until 2006, so this data was not available. However, it is not unreasonable to presume that pre-2000 outcomes would have been comparable to the non-FT patients. We recognise that the patients included in the study constitute only a proportion of the total number of CRC patients managed by the unit, but as all newly diagnosed patients are allocated equitably between each of the surgeons, the patients studied should represent a true cross section of the total, with no referral bias. A further limitation of the current study is that we do not know the total number of non-FT referrals, but the numerous and varied routes by which patients can present with CRC means that this is almost impossible to ascertain. We do not have any data as to the predictive power of various symptoms in predicting the likelihood of a patient having CRC, but this was not the aim of the study. Some patients referred as a Fast-

Track will inevitably be found to have other significant pathology, both malignant and benign, e.g. inflammatory bowel disease, but the primary reason for a Fast-Track referral must be a strong suspicion of CRC.

### Conclusions

In conclusion, this study has shown that the Fast-Track system has not affected the route by which patients present with CRC nor has it had any impact on outcomes. This is likely to be due to a combination of inappropriate referrals, delays in referral and failure of patients to seek medical attention with symptoms. Furthermore, it is unlikely that shortening a patient's investigative and treatment pathway by a few weeks at most will make any difference to their outcome. Continued efforts should be directed at raising public awareness of the symptoms of bowel cancer and strongly encouraging patients to consult their GP with such symptoms.

### Acknowledgements

No acknowledgements to declare.

### Authors' contributions

LT and HR carried out all data collection for the study and drafted the first write up, excluding the discussion. NW and SS drafted the second draft and wrote the discussion section. VA performed the statistical analysis and contributed to the design of the study. All authors contributed to the final write up. All authors read and approved the final manuscript.

### Competing interests

The authors declare that they have no competing interests.

### Ethics approval

All research carried out is in compliance with the Helsinki Declaration. Study is approved by the York District Hospital Clinical Effectiveness Team.

### Declarations

This work has previously been presented as a poster and oral presentation at the European Society of Coloproctology (ESCP) meeting in Belgrade, September 2013.

### Author details

<sup>1</sup>Hull York Medical School, York University Heslington, York YO10 5DD, UK.

<sup>2</sup>Department of General Surgery, York Hospital, York Teaching Hospital NHS Foundation Trust, Wigginton Road, York YO31 8HE, UK.

Received: 16 December 2015 Accepted: 27 May 2016

Published online: 08 June 2016

### References

1. UK Cancer Research. Bowel cancer incidence statistics. 2010.
2. UK Cancer Research. Cancer mortality for common cancers. 2011.
3. UK Cancer Research. Bowel cancer mortality statistics. 2010.
4. Office for National Statistics (ONS). Cancer survival in England: patients diagnosed 2005–2009 and followed up to 2010. ONS; 2011.
5. Brenner H, Bouvier AM, Foschi R, et al. Progress in colorectal cancer survival in Europe from the late 1980s to the early 21st century: the EUROCORE study. *International Journal of Cancer*. 2012;131:1649–58.
6. Gatta G, Capocaccia R, Sant M, et al. Understanding variations in survival for colorectal cancer in Europe: a EUROCORE high resolution study. *Gut*. 2000; 47:533–8.
7. Association of coloproctology of Great Britain and Ireland. Guidelines for the management of colorectal cancer. ACPGIBI; 2007.
8. Chohan DP, Goodwin K, Wilkinson S, et al. How has the 'two-week wait' rule affected the presentation of colorectal cancer? *Colorectal Disease*. 2005;7:450–3.

9. Leung E, Grainger J, Bandla N, Wong L. The effectiveness of the '2-week wait' referral service for colorectal cancer. *International Journal of Clinical Practice*. 2010;64:1671–4.
10. Rai S, Kelly MJ. Prioritization of colorectal referrals: a review of the 2-week wait referral system. *Colorectal Disease*. 2007;9:195–202.
11. Bevis PM, Donaldson OW, Card M, et al. The association between referral source and stage of disease in patients with colorectal cancer. *Colorectal Disease*. 2008;10:58–62.
12. Walsh SR, Gilson NL, Brown K, Novell JR. Trends in colorectal cancer survival following the 2-week rule. *Colorectal Disease*. 2007;9:207–9.
13. Schneider C, Bevis PM, Durdey P, et al. The association between referral source and outcome in patients with colorectal cancer. *The Surgeon*. 2013; 11:141–6.
14. Zafar A, Mak T, Whinnie S, Chapman MA. The 2-week wait referral system does not improve 5-year colorectal cancer survival. *Colorectal Disease*. 2012; 14:e177–80.
15. Flashman K, O'Leary DP, Senapati A, Thompson MR. The Department of Health's 'two week standard' for bowel cancer: is it working? *Gut*. 2004;53:387–91.
16. Pedersen AF, Hansen RP, Vedsted P. Patient delay in colorectal cancer patients: associations with rectal bleeding and thoughts about cancer. *PloS ONE*. 2013;8:e69700.
17. Khattak I, Eardley NJ, Rooney PS. Colorectal cancer—a prospective evaluation of symptom duration and GP referral patterns in an inner city teaching hospital. *Colorectal Disease*. 2006;8:518–21.
18. Allgar VL, Neal RD. Delays in the diagnosis of six cancers: analysis of data from the national survey of NHS patients: cancer. *British Journal of Cancer*. 2005;92:1959–70.
19. Health and Social Care Information Centre. National bowel cancer audit 2013.

Submit your next manuscript to BioMed Central and we will help you at every step:

- We accept pre-submission inquiries
- Our selector tool helps you to find the most relevant journal
- We provide round the clock customer support
- Convenient online submission
- Thorough peer review
- Inclusion in PubMed and all major indexing services
- Maximum visibility for your research

Submit your manuscript at  
www.biomedcentral.com/submit

