



Deposited via The University of Sheffield.

White Rose Research Online URL for this paper:

<https://eprints.whiterose.ac.uk/id/eprint/102848/>

Version: Accepted Version

Article:

Peters, J.L., Benetti, S., Dunlop, P. et al. (2016) Sedimentology and chronology of the advance and retreat of the last British-Irish Ice Sheet on the continental shelf west of Ireland. *Quaternary Science Reviews*, 140. C. pp. 101-124. ISSN: 0277-3791

<https://doi.org/10.1016/j.quascirev.2016.03.012>

Reuse

This article is distributed under the terms of the Creative Commons Attribution-NonCommercial-NoDerivs (CC BY-NC-ND) licence. This licence only allows you to download this work and share it with others as long as you credit the authors, but you can't change the article in any way or use it commercially. More information and the full terms of the licence here: <https://creativecommons.org/licenses/>

Takedown

If you consider content in White Rose Research Online to be in breach of UK law, please notify us by emailing eprints@whiterose.ac.uk including the URL of the record and the reason for the withdrawal request.

Sedimentology and chronology of the advance and retreat of the last British-Irish Ice Sheet on the continental shelf west of Ireland

Jared L. Peters ^a, Sara Benetti ^a, Paul Dunlop ^a, Colm O Cofaigh ^b, Steven G. Moreton ^c, Andrew J. Wheeler ^d, Christopher D. Clark ^e

^a School of Geography and Environmental Sciences, University of Ulster, Cromore Road, Coleraine, BT52 1SA, Northern Ireland, UK

^b Department of Geography, Durham University, Durham, DH1 3LE, UK

^c Natural Environment Research Council, Radiocarbon Facility, East Kilbride, Scotland, G75 0QF, UK

^d School of Biological, Earth and Environmental Sciences, University College Cork, Cork, Ireland

^e Department of Geography, University of Sheffield, Sheffield, S10 2TN, UK

Cite as: Peters, J.L., Benetti, S., Dunlop, P., O' Cofaigh, C., Moreton, S., Wheeler, A.J. & Clark, C.D. (2016). Sedimentology and chronology of the advance and retreat of the last British-Irish Ice Sheet on the continental shelf west of Ireland. *Quaternary Science Reviews*, 140, 101-124

Abstract

The last British-Irish Ice Sheet (BIIS) had extensive marine-terminating margins and was drained by multiple large ice streams and is thus a useful analogue for marine-based areas of modern ice sheets. However, despite recent advances from investigating the offshore record of the BIIS, the dynamic history of its marine margins, which would have been sensitive to external forcing(s), remain inadequately understood. This study is the first reconstruction of the retreat dynamics and chronology of the western, marine-terminating, margin of the last (Late Midlandian) BIIS. Analyses of shelf geomorphology and core sedimentology and chronology enable a reconstruction of the Late Midlandian history of the BIIS west of Ireland, from initial advance to final retreat onshore. Five AMS radiocarbon dates from marine cores constrain the timing of retreat and associated readvances during deglaciation. The BIIS advanced without streaming or surging, depositing a bed of highly consolidated subglacial traction till, and reached to within ~20 km of the shelf break by ~24,000 Cal BP. Ice margin retreat was likely preceded by thinning, grounding zone retreat and ice shelf formation on the outer shelf by ~22,000 Cal BP. This ice shelf persisted for ~2500 years, while retreating at a minimum rate of ~24 m/yr and buttressing a >150-km long, 20-km wide, bathymetrically-controlled grounding zone. A large (~150 km long), arcuate, flattopped grounding-zone wedge, termed here the Galway Lobe Grounding-Zone Wedge (GLGZW), was deposited below this ice shelf and records a significant stillstand in BIIS retreat. Geomorphic relationships indicate that the BIIS experienced continued thinning during its retreat across the shelf, which led to increased topographic influence on its flow dynamics following ice shelf break up and grounding zone retreat past the GLGZW. At this stage of retreat the western BIIS was comprised of several discrete, asynchronous lobes that underwent several readvances. Sedimentary evidence of dilatant till deposition suggests that the readvances may have been rapid and possibly associated with ice streaming or surging. The largest lobe extended offshore from Galway Bay and deposited the Galway Lobe Readvance Moraine by <18,500 Cal BP. Further to the north, an ice lobe readvanced at least 50 km offshore from Killary Harbour, possibly by ~15,100 Cal BP. The existing chronology currently does not allow us to determine conclusively whether these readvances were a glaciodynamic (internally-driven) response of the ice sheet during deglaciation or were climatically-driven. Following the <18,500 Cal BP readvance, the Galway Lobe experienced accelerated eastward retreat at an estimated rate of ~113 m/yr.



1. Introduction

Marine-terminating sectors of large ice sheets are considered to be potentially inherently unstable and sensitive to climatic and ocean forcing(s) (Cook et al., 2005; Rignot et al., 2010; Glasser et al., 2010). Geomorphology is increasingly used to constrain numerical ice sheet models of present and future ice sheet change (e.g. Bentley et al., 2010; Robinson et al., 2011; Lecavalier et al., 2014). A logical step towards improved model accuracy will come from advancing our knowledge of previous ice sheet behaviour along marine-terminating margins. By developing a thorough understanding of ice sheet behaviour during the Pleistocene, from maximum extent to final retreat, palaeoglaciological assessments enable improved understanding of the controls on modern ice sheet dynamics and provide a means of testing the veracity of predictive models. The last British-Irish Ice Sheet (BIIS) is a potential analogue for marine-based ice sheet retreat because it consisted largely of marine-based (~300,000 km³) ice with termini fed by ice streams and flanked by ice shelves (Clark et al., 2012a).

Ongoing efforts to reconstruct the size, dynamic behaviour and chronology of the last BIIS have recently focused on its marine-terminating margins on the continental shelves around Ireland and Britain (e.g. Bradwell et al., 2008; Ó Cofaigh et al., 2010; Peters et al., 2015). This extends from over a century of largely terrestrially-based research on the last BIIS (Clark et al., 2012a). In the south of Ireland, these efforts have extended the maximum southern position of the ice sheet (Fig. 1) hundreds of kilometres beyond previous reconstructions (Scourse et al., 1990; Ó Cofaigh and Evans, 2007; Praeg et al., 2015). Marine research north of Scotland provides sedimentary evidence for a coalescence of the BIIS with the Fennoscandian Ice Sheet (Sejrup et al., 1994) and recent analyses of bathymetric data provide evidence for grounded ice extending across the West Shetland Shelf (Bradwell et al., 2008). West of Ireland, geomorphic analyses of new bathymetric data provide compelling evidence for the extension of grounded ice to the shelf break west of the Malin Sea and Donegal Bay during the LGM and subsequent lobate readvances during deglaciation (Benetti et al., 2010; Dunlop et al., 2010; Ó Cofaigh et al., 2010; Fig. 1). Geomorphic, sedimentary and micropaleontological analyses show that the last BIIS reached the Porcupine Bank, west of Ireland (Fig. 1), and that its behaviour there was dynamic, fluctuating in extent and forming an ice shelf over the Slyne Trough (Peters et al., 2015). These offshore studies have led to a general shift in the prevailing consensus on BIIS maximum extent from a marine margin that did not extend far past the modern western Irish coastline (Bowen et al., 1986) to one that predominantly reached the edge of the continental shelf (Clark et al., 2012a; Fig. 1).



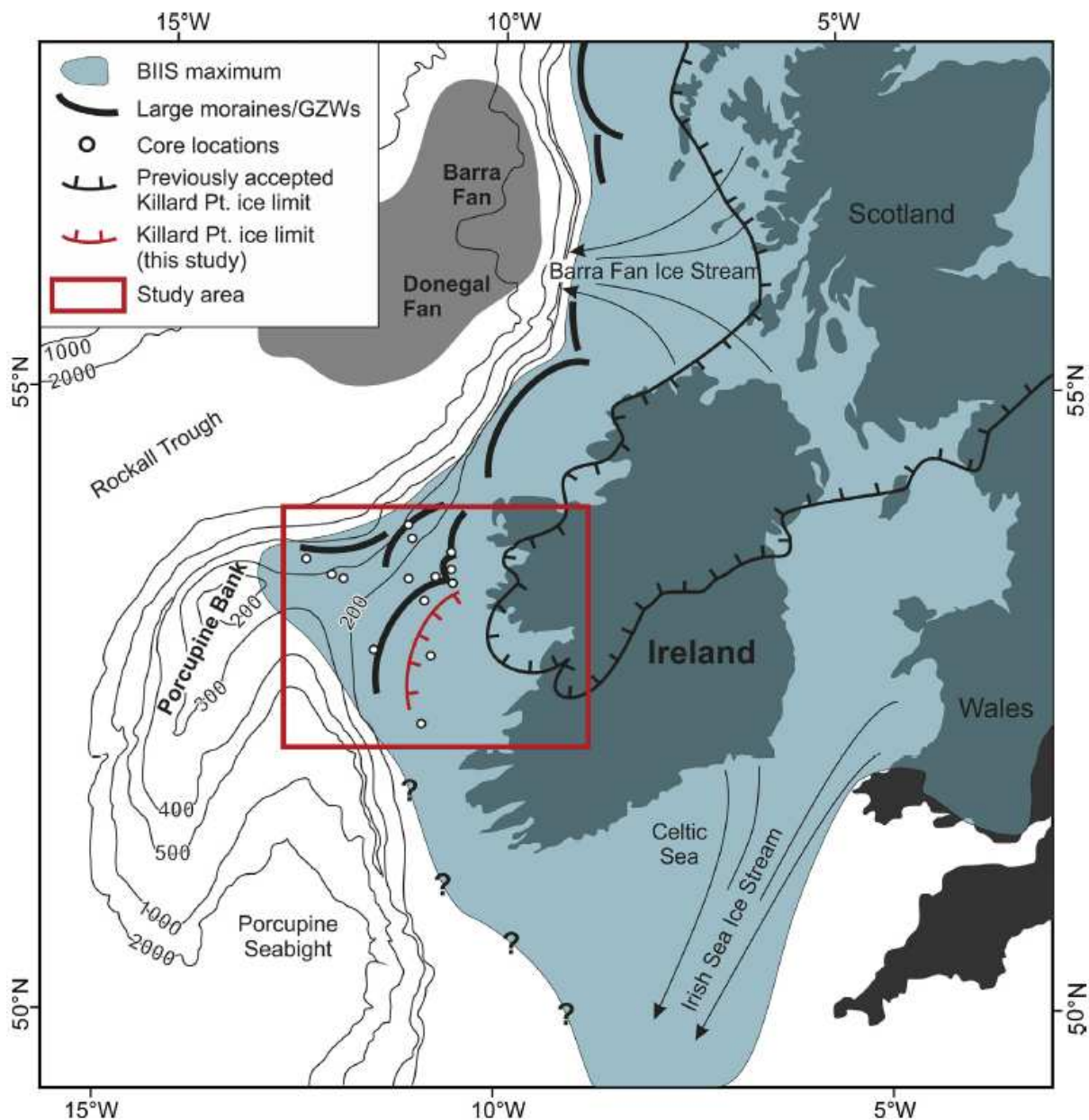


Fig. 1. Regional map locating the study area (shown in Fig. 2) and core locations amongst prominent glacial landforms, ice streams and the last BIIS's maximum extent (Sejrup et al., 2005; Scourse et al., 2009; Clark et al., 2012a; Peters et al., 2015). The 'Previously accepted Killard Point ice limit' is compiled from reconstructions by McCabe et al. (1998) in Ireland and the theoretical model of BIIS extent at approximately the 17 ka BP isochrone synthesised by Clark et al. (2012a).

Despite recent advances in understanding of the marine-terminating sectors of the BIIS, a detailed reconstruction of their retreat behaviour that incorporates chronologically constrained marine sediment analyses has yet to be established. The aim of this study is to reconstruct the dynamic behaviour of the marine-terminating margin of the last BIS on the continental shelf west of Ireland and to provide chronological constraints on its retreat. This is achieved by presenting new sedimentary data from fourteen sediment cores (three were used in a previous study; Peters et al.,

2015; Table 1) sampled from the continental shelf west of counties Mayo, Galway, Clare and Kerry, Ireland (Figs. 1 and 2). Using new sedimentological data and detailed geomorphic analyses of bathymetric data, we establish a regional stratigraphy for the western Irish continental shelf that records the marine-based advance, retreat and subsequent readvances of the last BIIS (Late Midlandian; marine isotope stage 2). Five new accelerator mass spectrometer (AMS) radiocarbon dates (Table 2) provide associated chronological control including calculating retreat rates during deglaciation of the shelf.

Table 1 Sediment core information

Core	Abbreviation	Latitude (N)	Longitude (W)	Water depth (m)	Core length (m)	Reference
CE10008_35	10-35	53° 58.3809'	11° 13.7809'	269	0.81	This paper
CE10008_36	10-36	53° 58.3622'	11° 13.8463'	234.4	2.01	This paper
CE10008_38	10-38	53° 51.9492'	10° 42.3491'	123.5	0.81	This paper
CE10008_40	10-40	53° 40.2068'	10° 40.8039'	134.8	4.0	This paper
CE10008_42	10-42	53° 46.2655'	12° 38.6442'	298.5	1.76	Peters et al. 2015
CE10008_44	10-44	53° 38.9150'	12° 16.8818'	295.1	2.3	Peters et al. 2015
CE10008_45	10-45	53° 37.7487'	12° 08.0713'	293.7	2.94	Peters et al. 2015
CE14008_36	14-36	53° 02.3689'	11° 38.1194'	155.6	1.65	This paper
CE14008_41	14-41	53° 01.0713'	10° 52.5889'	138.7	0.84	This paper
CE14008_42	14-42	52° 27.9652'	10° 59.5806'	126.0	0.81	This paper
CE14008_53	14-53	53° 23.9869'	11° 01.1200'	145.2	1.28	This paper
CE14008_54	14-54	53° 38.1163'	11° 12.5620'	174.4	1.47	This paper
CE14008_57	14-57	53° 40.2868'	10° 53.0842'	150.9	1.0	This paper
CE14008_59	14-59	53° 35.8304'	10° 37.3172'	132.0	3.43	This paper

Table 2 Radiocarbon ages from the western Irish continental shelf

Core	Depth (cm bsf)	Sample material	¹⁴ C age (yrs. BP)	ΔR used	Calibrated 2σ age range (yrs. BP)	Calibrated 2σ age median (yrs. BP)	δ ¹³ C ‰	Laboratory code
10-35	45	Paired bivalve shell	18,060±120	+300±50	20,339-20,588	20,944	8.5	UCIAMS-144579
10-42	36	Paired bivalve shell	17,900±89*	+300±50	21,034-20,470	20,741	-4.7	Poz-66484
10-44	75	Coral fragment	13,614±48	0±50	16,109-15,646	15,876	-6.5	SUERC-48915
10-44	180	Coral fragment	20,710±90*	+300±50	22,435-23,783	24,067	-1.3	Beta-334419
10-45	94	Single bivalve shell	18,733±107*	+300±50	22,210-21,504	21,841	4.3	Poz#2-66430
14-53	70	Mixed benthic foraminifera	15,956±87	+300±50	18,748-18,280	18,517	-6.9	Poz-66485
14-54	134	Mixed benthic foraminifera	18,222±59	+300±50	21,437-20,891	21,161	-1.0	SUERC-58294
14-59	325	Single bivalve shell	13,121±42	-±50	15,349-14,844	15,148	-0.1	SUERC-58295

From Peters et al., 2015



2. Methods

This study uses single beam bathymetric data compiled by the Norwegian-developed Olex (www.olex.no) sonar data management software to analyse the geomorphology of the continental shelf west of Ireland. The sonar data are a compilation of voluntarily-contributed, geolocated sonar measurements and, in areas of adequate coverage, produces a raster of 5-m resolution cells that typically convey vertical data with a resolution of 1 m (www.olex.no; Bradwell et al., 2008). The bathymetric data is presented as 2D hillshaded surfaces and a series of seafloor profiles to analyse and characterise the geomorphology of glacial landforms (Fig. 2).

Fourteen vibro-cores (see Table 1) were analysed, three of which were used by Peters et al. (2015; Table 1). Cores with the designation CE10008 (Table 1) were collected during the CE10008 research cruise conducted in 2010 with the RV Celtic Explorer; cores labelled CE14004 were collected during the “WICPro” (West Ireland Coring Program) research cruise conducted in 2014 with the RV Celtic Explorer. X-radiographs of the cores were developed, usually prior to splitting, using a CARESTREAM DRX Evolution system at Ulster University, Jordanstown. The x-radiographs reveal sedimentary structures and clast or dropstone presence in the cores that may be unidentifiable from visual inspection of the core section alone. Structures visible in the x-radiographs are displayed as sketches in the sediment logs and illustrative x-radiograph examples are also provided for most lithofacies. Sediment physical properties (wet bulk density and magnetic susceptibility) were measured prior to splitting using a GEOTEK© multi sensor core logger at the National University of



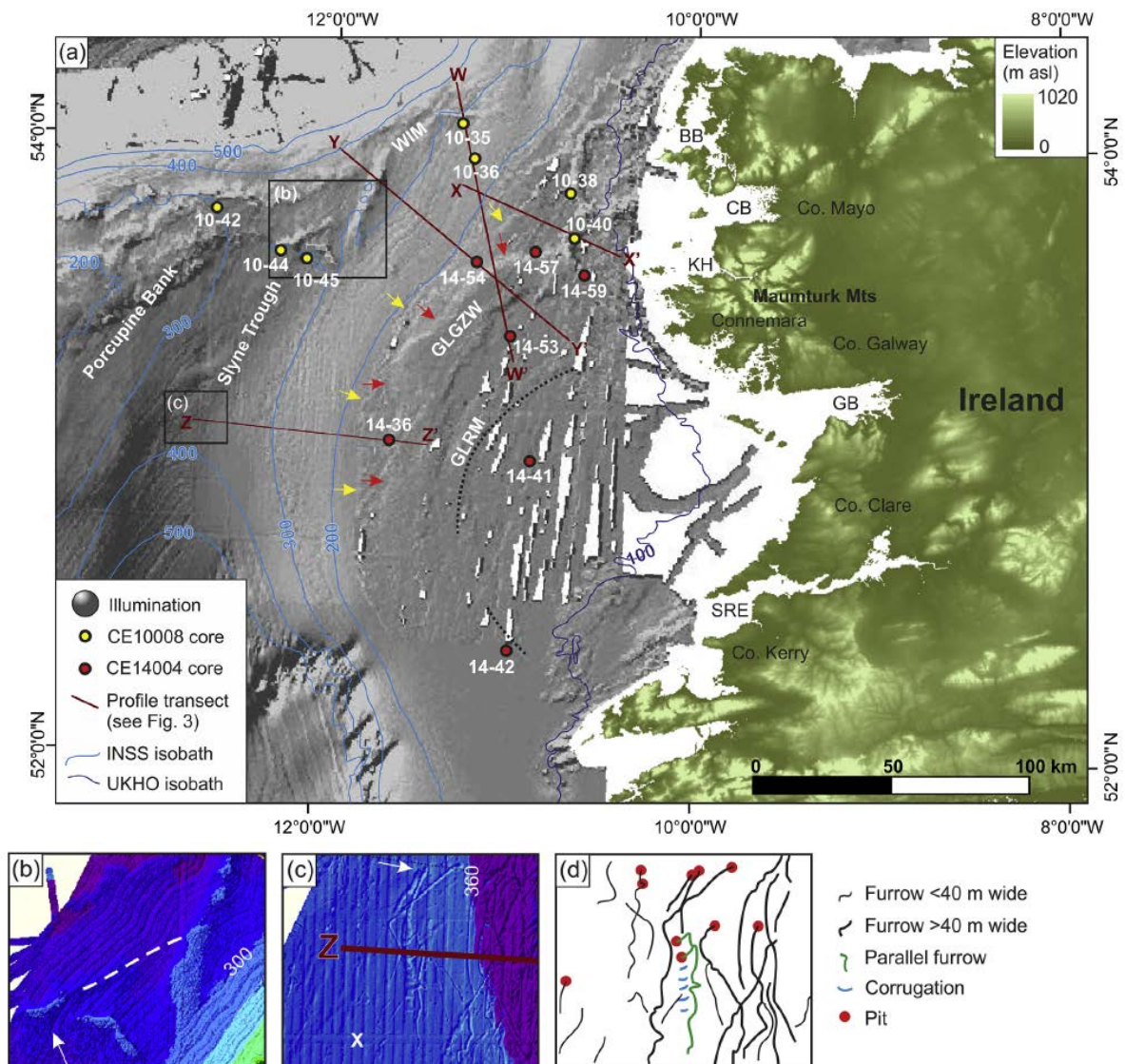


Fig. 2. (a) Study area map showing the Olex bathymetric dataset used for the geomorphic analyses and core locations relative to modern land. The topographic DEM (NASA, Shuttle Radar Topography Mission) reveals regional, bedrock-controlled trends in geomorphology. The labelled transects delineate the seafloor profiles shown in Fig. 3. Isobaths are shown every 100 mbsl and created from Irish National Seafloor Survey (INSS, www.infomar.ie) data and the United Kingdom Hydrographic Office (UKHO; www.ukho.gov.uk) data. Yellow arrows delineate the western edge of the low, flat-topped ridge (Fig. 3ii); red arrows delineate the western edge of the large flat-topped ridge (Fig. 3iii); black dotted lines delineate the eastern edge of the smaller, nested arcuate ridge. (b) Classified (20-m) hillshaded Olex data showing: (b) detail of the Slyne Trough Moraines and the corrugated southern section of the larger arcuate ridge on the outer shelf; the arrow marks an area of intense iceberg scouring and lodgement and dashed, white line highlights the geographic relationship between the moraines and corrugations (Peters et al., 2015); (c) detail of a large seafloor furrow with a corrugated base, gradual, progressively-deepening southern terminus and abrupt, pit-like northern terminus (marked by arrow); the white 'X' highlights noise in the Olex data that manifests horizontally across the data; (d) sketch of furrows and pits in (c). Abbreviations: WIM ¼ West Ireland Moraine, GLGZW ¼ Galway Lobe Grounding Zone Wedge, GLRM ¼ Galway Lobe Readvance Moraine, BB ¼ Blacksod Bay, CB ¼ Clew Bay, KB ¼ Killary Bay, GB ¼ Galway Bay, SRE ¼ Shannon River Estuary. (For interpretation of the references to colour in this figure legend, the reader is referred to the web version of this article.)

Ireland, Maynooth. These data are displayed in the sediment logs along with mean values calculated for each core that allow intra-core trends to be seen and intercore comparisons to be made. When

large peaks (from individual clasts or section breaks) in the data skew the magnetic susceptibility mean, the data are smoothed by removing outlying values; the excluded measurements are highlighted in the logs. After the cores were split, sediment shear strength was measured using an Impact© shear vane, calibrated by MCC©, at intervals typically guided by lithofacies but generally ≈ 15 cm. Areas of high clast density or with clast-supported deposits were avoided while collecting shear strength measurements because clast contact with the vane generates spurious results. The sediment cores were split and stored at 4 °C at Ulster University, Coleraine. Visual and x-radiograph inspections, aided by physical property analyses, identified twelve lithofacies from which 1-cm slabs were subsampled. Subsampling intervals were typically guided by lithofacies descriptions (cf. Kilfeather et al., 2011), usually with at least one subsample per lithofacies and often two, which enabled improved definition of contacts and intra-lithofacies changes. A sampling interval of ≈ 10 cm was maintained for most of core 10-40 (the longest core examined; Table 1). Subsamples were analysed for water content, grain size and relative abundance of *Elphidium excavatum* forma *clavatum* (Feyling-Hanssen, 1972). Lithic grains > 1 mm were removed by dry sieving and reported as a percent by weight of the total sediment sample. The < 1 mm fraction was analysed by laser granulometry using a MALVERN Mastersizer © at Trinity College, Dublin, at intervals guided by lithofacies descriptions. In cores 10-40 and 14-59 the number of lithic grains > 1 mm were counted and are displayed as number/gram of sediment (cf. Grobe, 1987), which allows a comparison to the lithic grains > 1 mm reported as mass percent.

Elphidium Clavatum specimens were identified using the morphological characteristics outlined by Feyling-Hanssen (1972). This species is used for this study because it is well-documented as an opportunistic, arctic-subarctic species that often dominates benthic foraminiferal populations in recently deglaciated marine environments (Hald et al., 1994). *E. clavatum* relative abundance is calculated as a percentage of the total number of well-preserved foraminifera tests in an aliquot. Aliquots were split using a Green Geological© microsampler to yield subsamples with ≈ 300 relatively well-preserved benthic foraminifer tests (cf. Melis and Salvi, 2009) and sieved to remove the < 125 μ m fraction because the sediment below this size contained very few foraminifer tests, most of which were unidentifiable, likely allochthonous fragments (cf. Peters et al., 2015). *E. clavatum* relative abundances reported by Peters et al. (2015) are referred to for core 10-45 and were produced from aliquots with ≈ 200 benthic foraminifer tests. Five calcareous biogenic samples were collected for AMS radiocarbon analysis from sediment horizons interpreted to record BIIS retreat or readvance across the continental shelf west of Ireland and three previously-reported ages (Peters et al., 2015) are recalibrated for use in this study. Samples were dated at the NERC Radiocarbon Facility, Scotland, and the Poznan Radiocarbon Laboratory, Poland. The dated material was unabraded and unbroken and comprised coral fragments, paired and unpaired bivalve shells and mixed benthic foraminiferal tests (sample photographs are provided in sediment logs). Results are presented as conventional radiocarbon (^{14}C BP) and calibrated (Cal BP) ages; the calibrated 2s median results are referenced in the text. Radiocarbon ages were calibrated at 2s confidence level with Calib©7.1 software (Stuiver and Reimer, 1993), using the Marine13 calibration dataset (Reimer et al., 2013) and with the DR set as 0 ± 50 for radiocarbon ages that fall between the Younger Dryas and Heinrich 1 cold intervals (≈ 17.0 - 12.0 ka BP, Broecker et al., 1989; Bond et al., 1999; Bowen et al., 2002) and a DR of $\pm 300 \pm 50$ for radiocarbon ages that fall between Heinrich 1 and Heinrich 2 (25.0-17.0 ka BP, Dowdeswell et al., 1995).

3. Results

3.1. Geomorphology

Ridges with various morphological characteristics are found on the continental shelf offshore of counties Mayo, Galway, Clare and Kerry, Ireland (Fig. 2). The ridges on the Porcupine Bank and Slyne Trough (the westernmost ridges) are sinuous and narrow (Fig. 2a, b). These ridges were shown to have asymmetric profiles and orientations that roughly align with corrugations on a larger, north-south trending arcuate ridge located <10 km to the east (Peters et al., 2015; Fig. 2). This large (~80 km long), corrugated, arcuate ridge on the outer continental shelf has an asymmetric profile that narrows and steepens northward to its un-corrugated northernmost extent (Figs. 2a and 3c). Its profile asymmetry is characterised by short, steep western flanks and longer eastern flanks (Fig. 3b, c). The ridge is truncated near its middle, but appears to be/have been continuous based on the arc and orientations of the discrete segments (Fig. 2a).

East (landward) of the corrugated ridge, the continental shelf is covered by a complex of bisecting (i.e. truncated) arcuate ridges (Fig. 2). These ridges have a similar, convex-seaward morphology to the corrugated ridge but have disparate radii and profiles (Figs. 2a and 3). The southernmost, largest of these ridges is poorly defined to the south and is truncated by a smaller ridge to the north (Fig. 2). This large ridge is ~150 km long and up to 22 km wide (Figs. 2 and 3bed). It is distinctly flat-topped and reaches heights above the surrounding seafloor of up to 20m (Fig. 3bed). The western edge of this ridge (Fig. 3, bold grey line iii) is flanked by a continuous, low-relief (~11 m high, Fig. 3) landform that is also flat-topped but distinctly lower than the main ridge crest (Figs. 2 and 3). East of and nested within this large ridge is a smaller arcuate ridge that is discernible in the Olex data despite its relatively poorly defined boundaries (Fig. 2a). Although it is relatively ambiguous, this smaller ridge seems to be ~120 km long and has a southern extent that reaches ~10 km farther south than the poorly-defined southern margin of the larger, flat-topped ridge (Fig. 2a).

North of the large, flat-topped ridge are two smaller (~40-45 km long) arcuate ridges (Fig. 2). The smallest (i.e. tightest radius) of these ridges is situated between the large, flat-topped ridge and the northernmost ridge and appears to truncate both of the neighbouring landforms (Fig. 2a). This small ridge is situated east (landward) of the flat-topped, low-relief landform that flanks the large ridge. The small ridge is ~20 m tall and reaches ~106 mbsl in height, making it the bathymetrically highest ridge in the study area (Fig. 3a). It is asymmetric and is characterised by relatively steep western side but gentle eastern side (Fig. 3a). The northernmost ridge has a wider radius and is truncated by the small ridge but is otherwise geomorphically similar (Fig. 2a, d).

Much of the seafloor on the continental shelf is furrowed, particularly areas shallower than ~350 mbsl located west of the large, flat-topped arcuate ridge and in the Slyne Trough (Figs. 2 and 3d). The furrows are abundant on the continental shelf in areas approximately <220 mbsl and cover both the arcuate ridges and the surrounding seafloor (Fig. 2b, c, d). The largest and deepest furrows occur in the Slyne Trough (Figs. 2b, c, 3d), where they have depths of >10 m and terminate against bathymetric highs (Peters et al., 2015). The furrows in the Slyne Trough often have relatively poorly defined southern termini and distinct, kettle-like depressions or pits at their northern termini (Fig. 2c, d). Some of the large Slyne Trough furrows have corrugations at their base (Fig. 2c) and are flanked by berms (Fig. 3d).

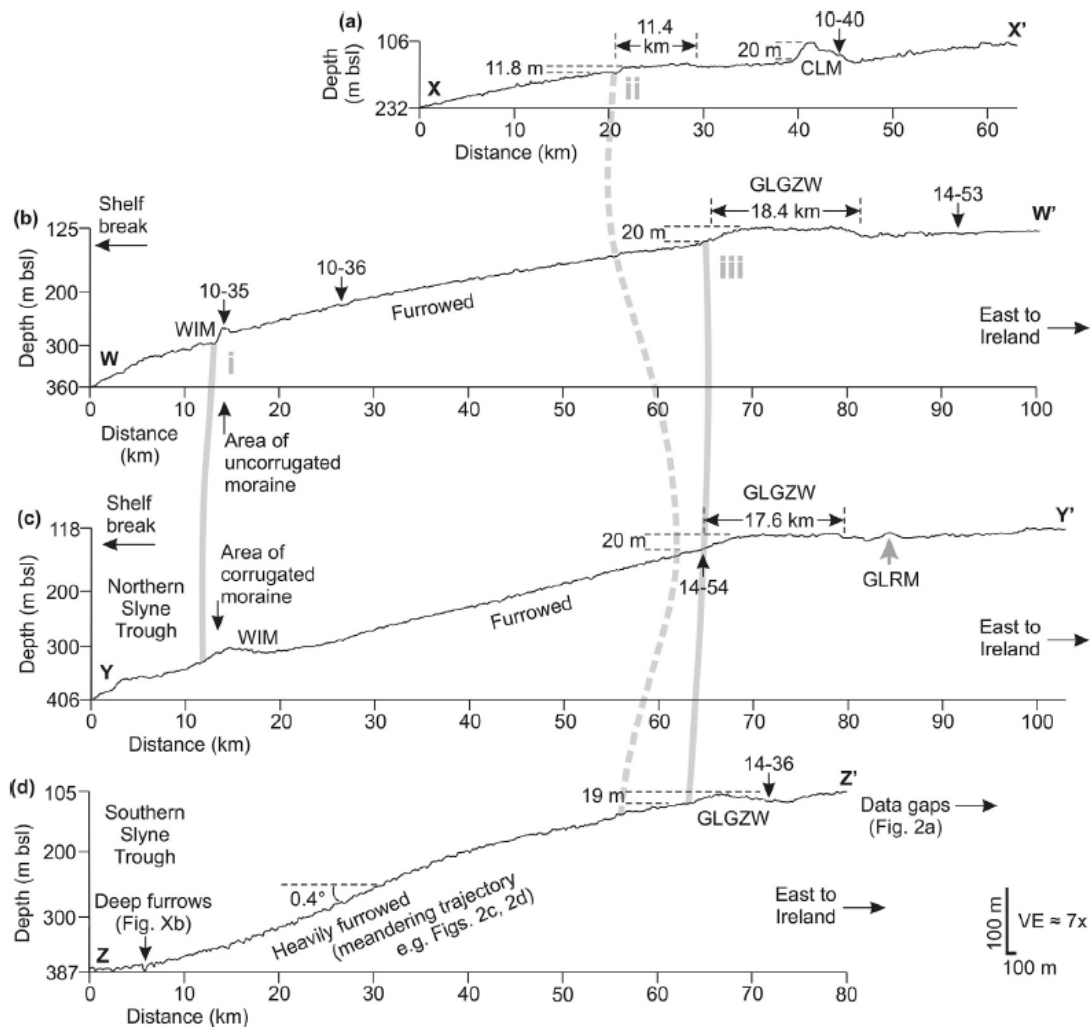


Fig. 3. Seafloor profiles characterising the glacial landforms in the study area. Bold grey lines labelled i, ii and iii delineate the western flanks of seafloor ridges that extend between profiles but do not represent ridge geography (Fig. 2a). (a) Profile X-X0 reveals the northern extension of the low-relief, flat-topped ridge (ii) that flanks the largest arcuate ridge in the study area (Fig. 2a) and the steep-sided arcuate ridge that truncates the large ridge. The location of core 10-40 is shown. (b) Profile W-W0 shows the northern extent of the westernmost arcuate ridge (WIM, i), the complex of large, flat-topped, arcuate ridges (ii and iii) and the ridge-free, furrowed seafloor in between. The location of cores 10-35, 10-36 and 14-53 are shown. (c) Profile Y-Y0 exposes the corrugated southern extent of the westernmost arcuate ridge (i), the complex of large, flat-topped, arcuate ridges (ii and iii) and the ridge-free, furrowed seafloor in between. The location of core 14-54 is shown. (d) Profile Z-Z0 depicts the deep furrows with flanking berms that are abundant in the Slyne Trough and the poorly-defined southern extent of the complex of large, flat-topped arcuate ridges. The location of core 14-36 is shown.

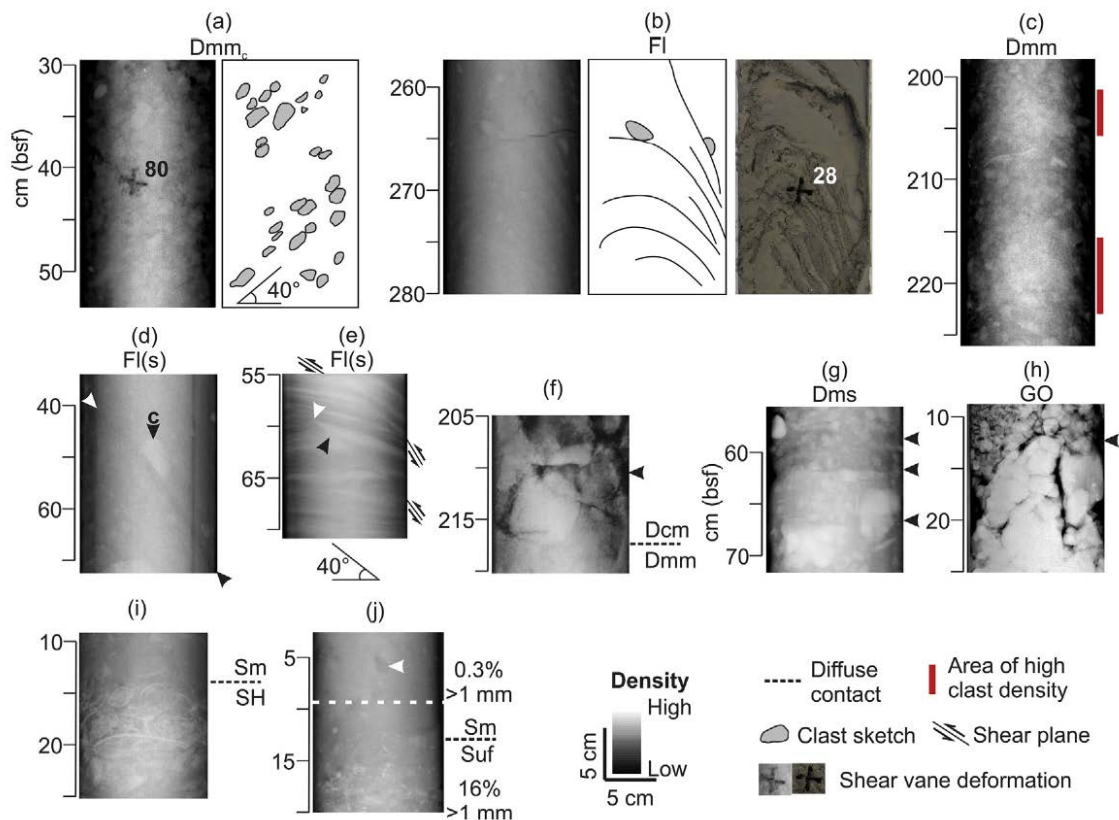
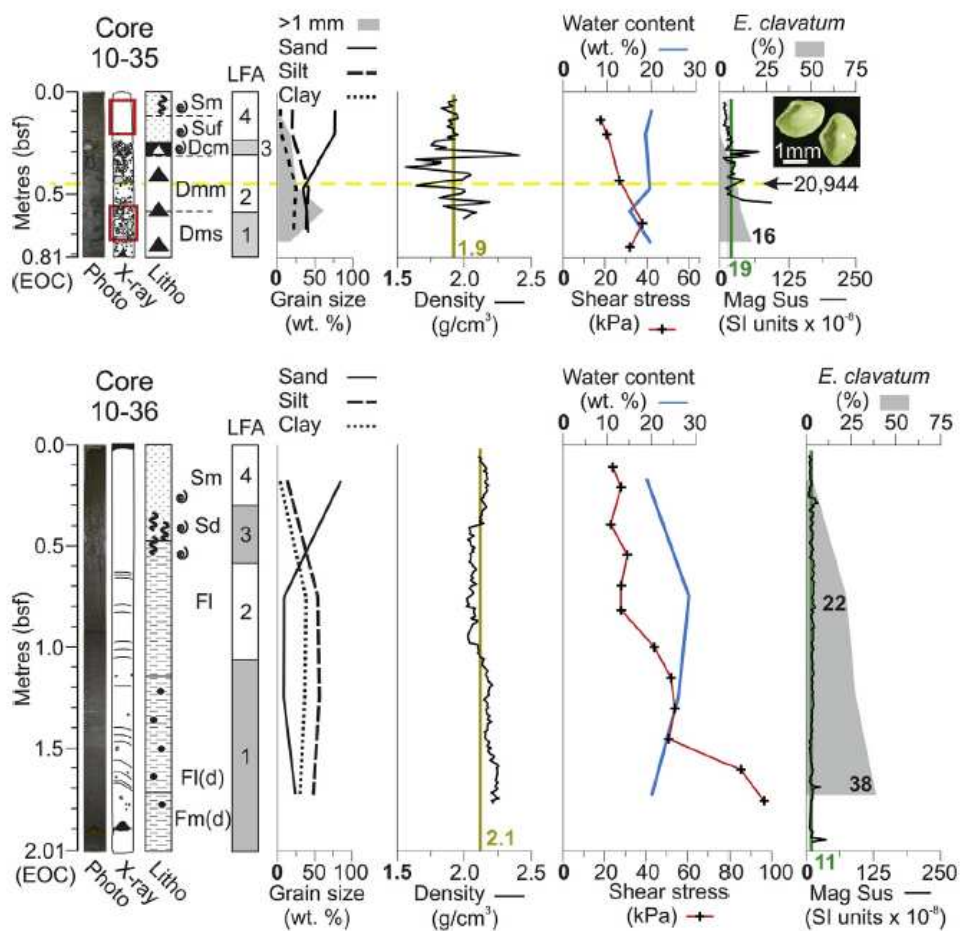


Fig. 4. Representative x-radiograph facies. (a) X-radiograph and structure sketch of in Dmmc from core 10-38 exposing a $\sim 40^\circ$ preferential clast alignment and showing the location of a shear stress measurement of 80 kPa. (b) X-radiograph, structure sketch and photograph of deformed FI from core 14-59 revealing apparent clast alignment to strain and showing the location of a shear stress measurement of 28 kPa. (c) Dmm from core 10-40 exposing rhythmic areas of high clast concentration. (d) Clast-rich FI(s) from core 14-57 exposing a prominent shear plane (top $\frac{1}{4}$ white arrow, bottom $\frac{1}{4}$ black arrow) with a large (~ 3 -cm long) clast (arrow labelled 'c') aligned in the direction of shear. (e) FI(s) from core 14-41; well-defined laminae reveal a $\sim 40^\circ$ reverse fault with an offset of ~ 2 cm (top of offset $\frac{1}{4}$ white arrow, bottom of offset $\frac{1}{4}$ black arrow). (f) Dcm with a diffuse lower contact overlying Dmm in core 14-59; black arrow marks an area devoid of large clasts but filled with interstitial sandy matrix. (g) Dms from core 10-35 exposing clast-rich, horizontal stratification; black arrows mark contacts between select strata. (h) GO from core 10-38; black arrow marks an area of void space between clasts. (i) Diffuse contact between Sm and underlying SH in core 14-54; large shells are exposed as light-grey curvilinear shapes. (j) Diffuse contact between Sm and underlying Suf in core 10-35; white dashed line marks the location of the GSA analyses that yielded 0.3% > 1 mm lithic fragments; GSA analysis that yielded 16% > 1 mm lithic fragments was taken at the bottom of the core section shown; white arrow marks an area of relatively low-density, poorly-sorted, shell-fragment-rich material interpreted as an infilled burrow (bioturbation); shell fragments are exposed as light-grey/white.



Legend

X-ray sketch	Lithology / sedimentology	General
● Clast	□ Sand	+ S.S. measurement
— Laminae	● Gravel	■ Excluded (in mean) Mag Sus measurements
⌒ Shell/fragment	□ Mud	— Mag Sus mean
▲ Coring Deformation	△ Diamicton	— Density mean
□ Fig. 4 ref.	▲ Dcm diamicton	— Cal. ¹⁴ C age
	■ Shell hash	
	⚡ Bioturbation	
	● Shell/frag.	
	• Dropstone	
	⊔ Soft-sediment clast	
	— Sharp contact	
	-- Gradational contact	
	⊔ Clast with glaciogenic wear features	
	--- Unconformity	
	⊔ Dewatering structures	
	⊔ Shear plane	

Fig. 5. Plots of core data from the western Irish continental shelf. From left: true-colour photograph, sketch of prominent structures discerned by x-radiograph analyses, log of lithology and sedimentary structures, lithofacies abbreviations and extents of LFAs, grain size data, sediment density (wet bulk) and (in cores 10-40 and 14-59) counts of lithic fragments >1 mm, sediment shear strength and water content (percent by weight), magnetic susceptibility and relative abundance of the benthic foraminifer *Elphidium excavatum forma clavatum*. AMS radiocarbon sample locations (m bsf) are marked by horizontal, dashed yellow lines; ages are provided in Cal BP and photographs of the dated materials are shown. (For interpretation of the references to colour in this figure legend, the reader is referred to the web version of this article.)

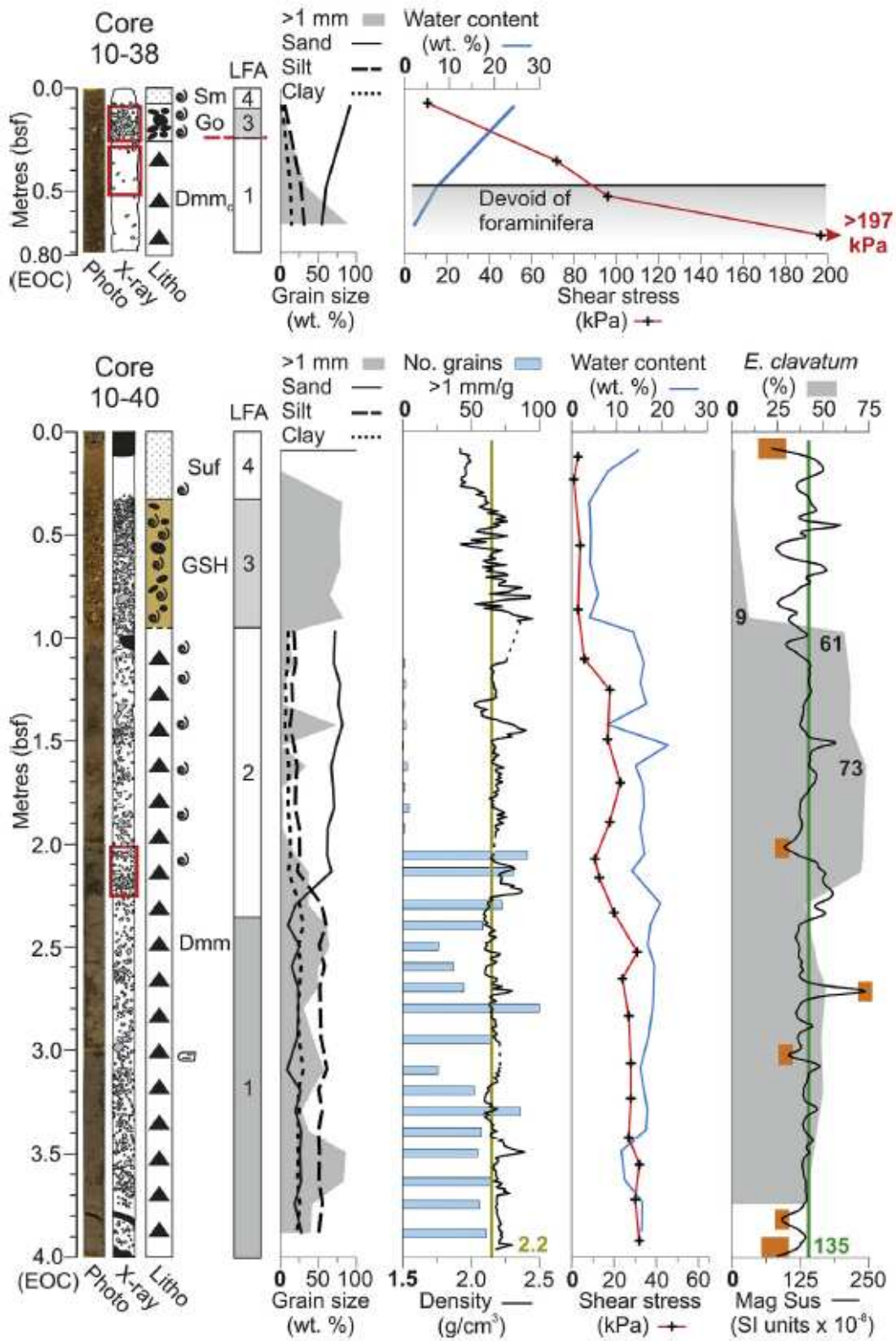


Fig. 5. Continued

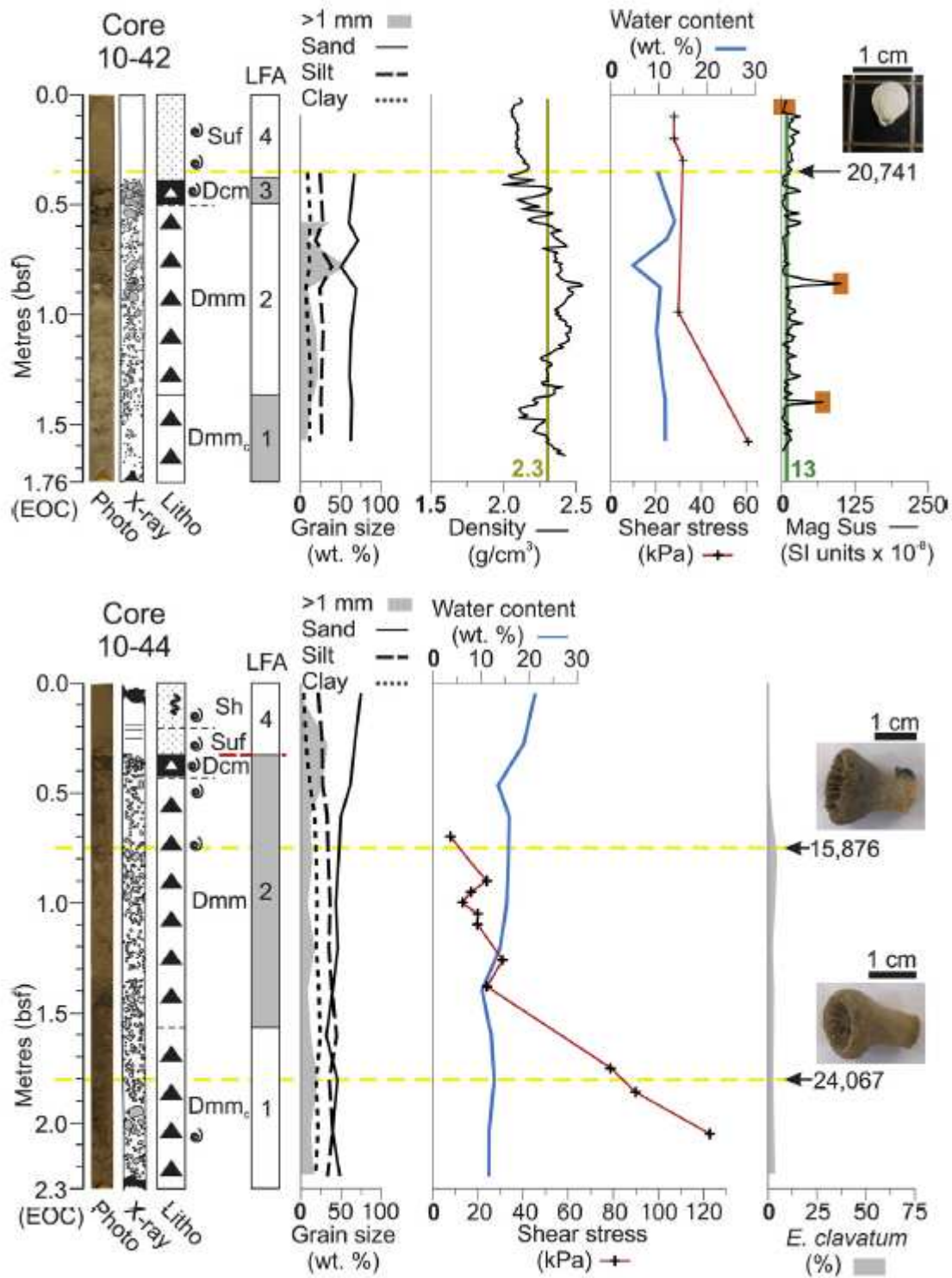


Fig. 5. Continued

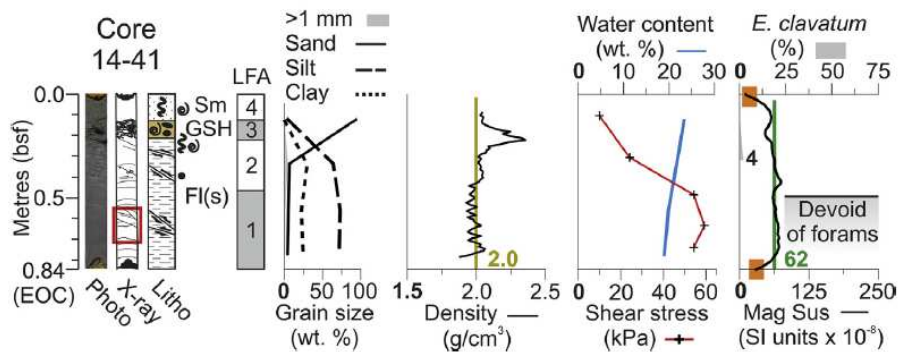
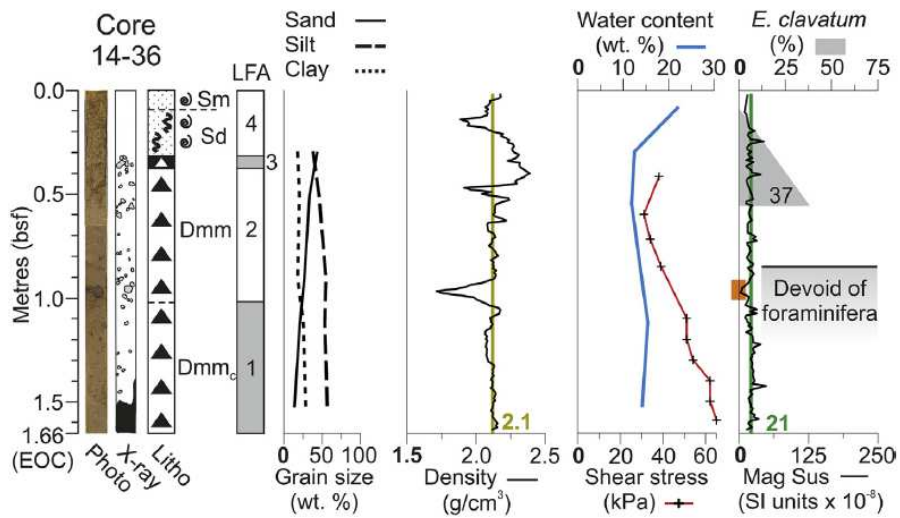
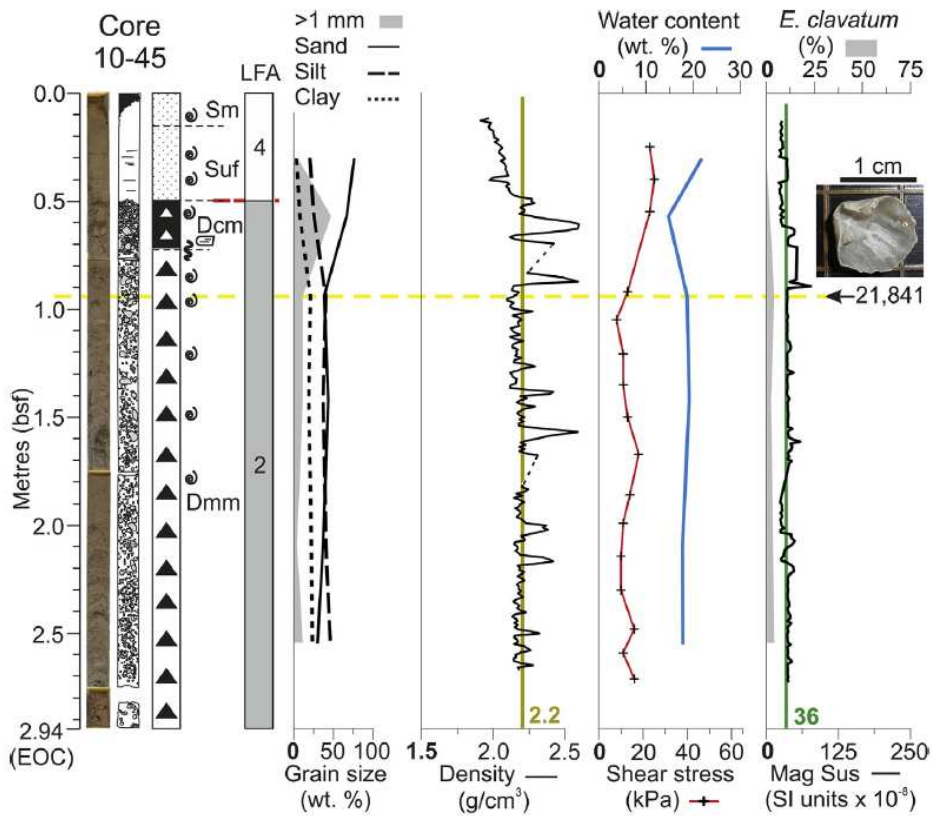


Fig. 5. Continued

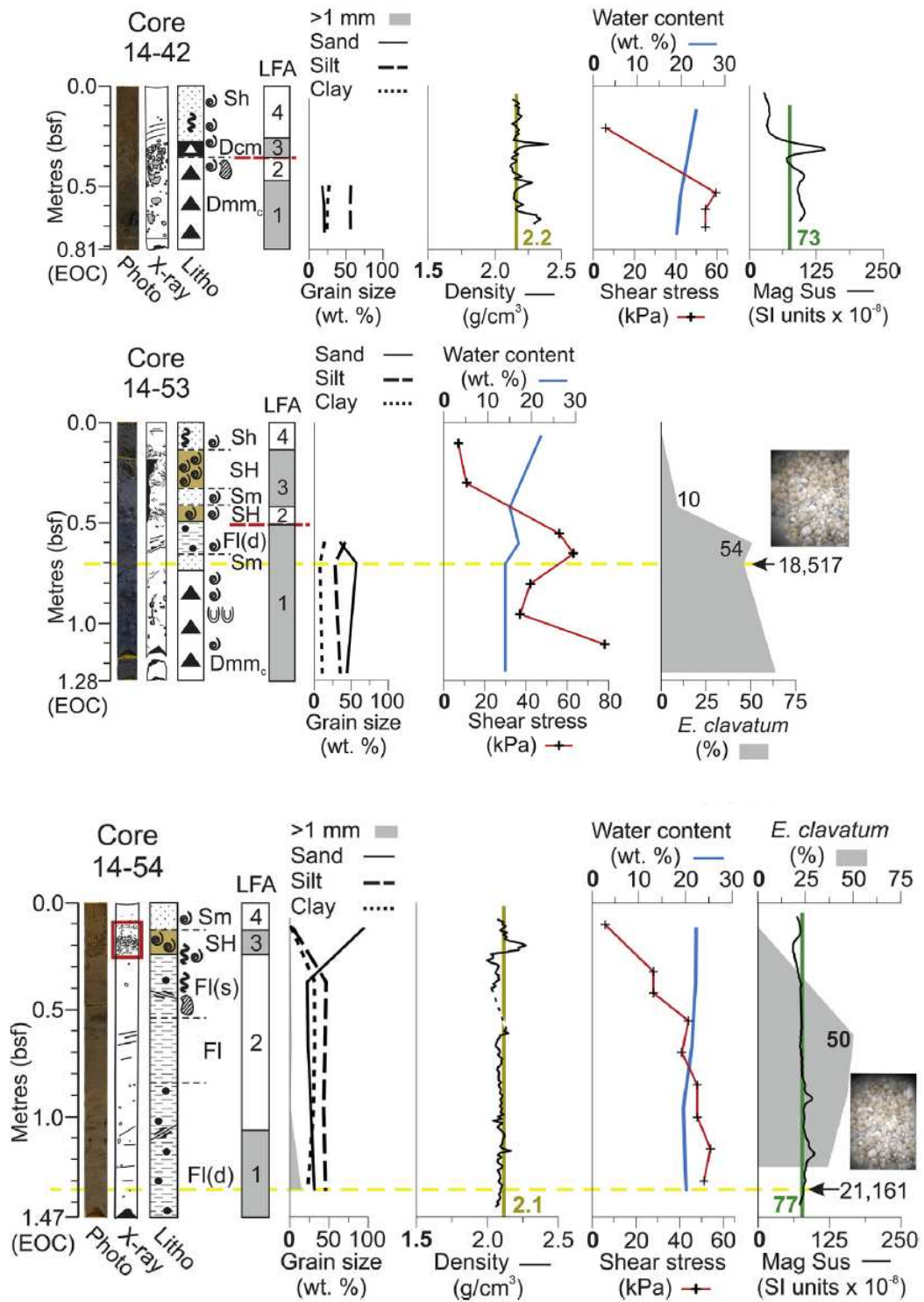


Fig 5 Continued

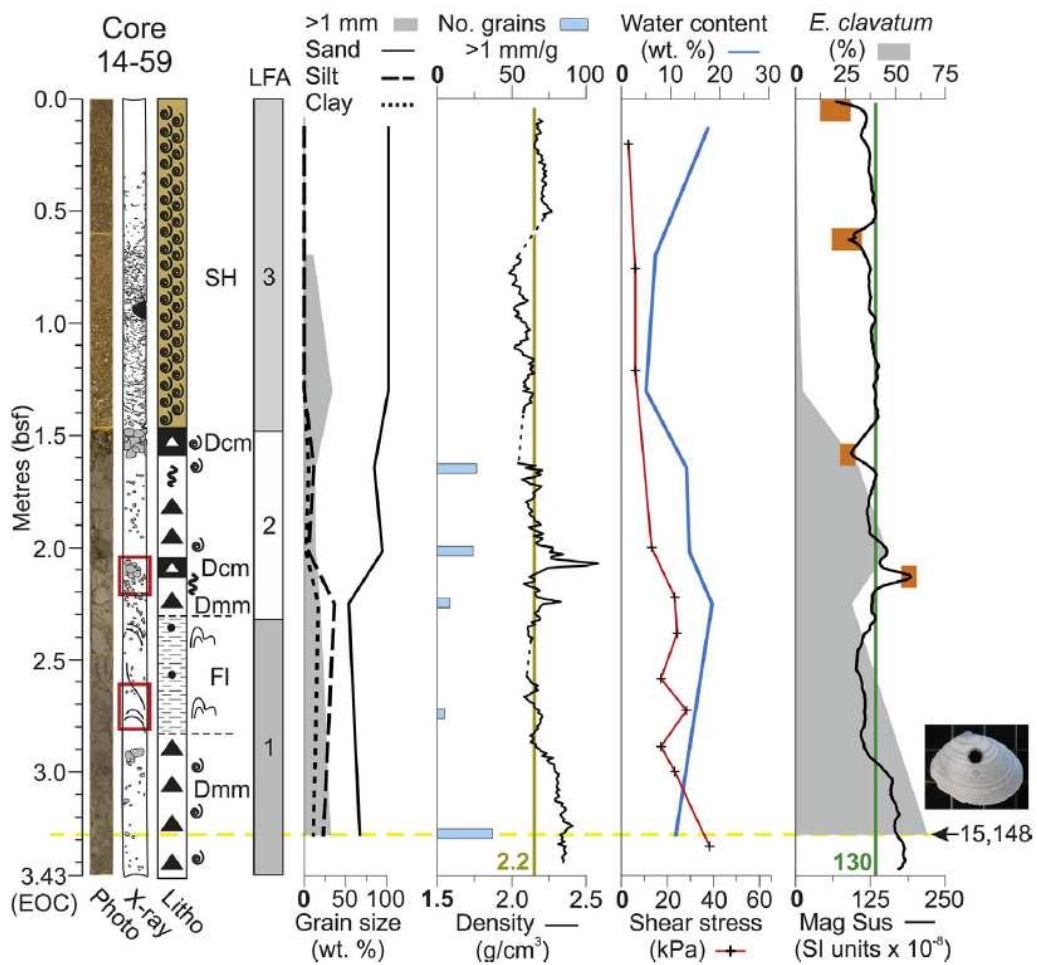
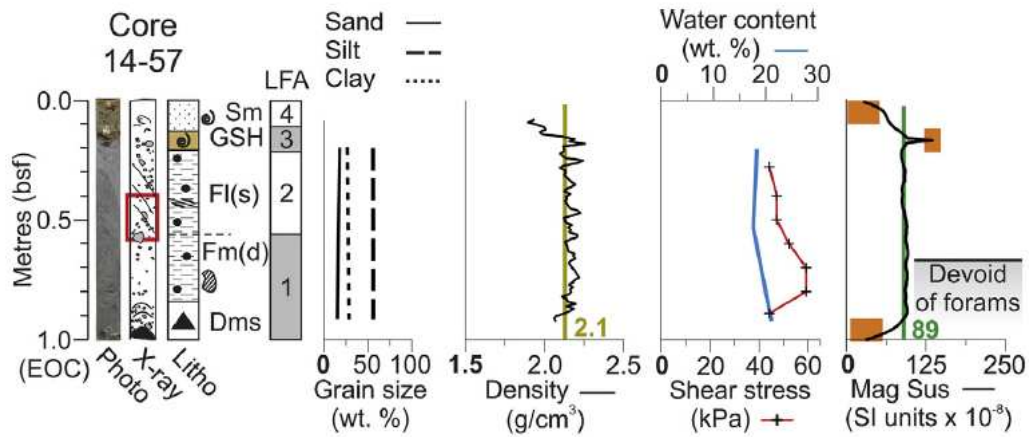


Fig. 5. Continued

3.2. Sedimentology

Twelve lithofacies are identified by visual inspection, x-radiograph analysis (Fig 4) and sediment physical property measurements. These lithofacies are built into four lithofacies associations as described in the following subsections.

3.2.1. LFA 1: *Diamicton (Dmmc, Dmm and Dms) and compact, deformed mud (Fm and F(s))*

Highly consolidated diamicton (Dmmc) with shear strengths from 50 to 197 kPa (note 197 kPa is the shear vane's maximum measureable stress and thus measurements at this value are regarded as minima) was recovered at the base of six cores (10-38, 10-42, 10-44, 14-36, 14-42, 14-53) and ranges from at least 35-70 cm in thickness (Fig. 5). This sediment consists of small to large pebble-sized clasts with variable roundness supported by a matrix of muddy sand or sandy mud with up to 64% sand in 10-42 and 14% sand in 14-36 (Fig. 5). The matrix is grey or nearly black in colour (2.5Y 6/2, 2.5Y 5/2, 5Y 3/1, 5Y 2.5/1). Occasionally clasts show a preferential alignment in x-radiographs with clast a-axes oriented ~40° from horizontal (Fig. 4a). This lithofacies is characterised by high wet bulk densities (~2.1 g/cm³), low water content (typically <15% and as low as 2.26% in core 10-38) and low magnetic susceptibility (~13-21 10⁻⁸ SI) with the exception of core 14-42 (the southernmost core), which reaches 107 10⁻⁸ SI (Fig. 5).

In core 10-44 a well preserved coral fragment (*Lophelia pertusa*) was recovered from the Dmmc lithofacies. However, in cores 10-38 and 14-36 this diamicton contains little or no observed biogenic material (Fig. 5). Farther offshore (i.e. farther west), in cores 10-42 and 10-44 the Dmmc lithofacies contains highly abraded or broken foraminifer tests but little to no poorly preserved macrofaunal test material.

The base of cores 10-35, 10-40, 14-57 and 14-59 is composed of at least 15-302 cm of poorly sorted, matrix-supported diamicton with moderate consolidation (30-50 kPa) (Fig. 5). The same diamicton overlies the Dmmc lithofacies in cores 14-36 and 14-53, where it has a gradational lower contact (Fig. 5). The diamicton is typically massive (Dmm) with the exception of crude stratification (Dms) visible on x-radiographs at the base of cores 10-35 and 14-57 (Figs. 4 and 5). The beds within the Dms lithofacies are poorly defined and are ~3 cm thick (Fig. 4g). Sandy, vertically oriented intrusions that are devoid of shell fragments extend from 0.81 to 1.0 mbsf of core 14-53 and yield distinctly lower shear stress values (Fig. 5). Small to large pebble sized clasts of variable roundness are common in this lithofacies and occasionally clasts are rhythmically concentrated in ~5-cm thick intervals (Fig. 4c). One 4-cm long (a-axis), sub-rounded, dark blueish grey (Gley 2, 4/5PB), fine-grained clast sampled from 3-m bsf in core 10-40 (Fig. 5) was found to have multiple sets of striations. Grain-size analyses reveal highly variable mass percentages of >1 mm grains, ranging from almost no grains in core 14-36 to >85% in core 10-40 (Fig. 5). Sand, silt and clay percentages in the matrix are also variable but typically dominated by silt or sandy silt; sand percentages commonly increase upwards (Fig. 5). In core 10-35, on the outer shelf (Fig. 2a), the Dmm lithofacies is greyish brown (2.5Y 5/2 or 2.5Y 4/2) and often sandier than the diamicton sampled from other parts of the shelf (Fig. 5). In cores 10-40, 14-36, 14-57 and 14-59 the moderately stiff diamicton is grey to very dark grey (2.5Y 5/1 to 5Y 3/1). This lithofacies is characterised by highly variable wet bulk densities (1.7-2.4 g/cm³) and irregular water content that ranges from 4 to 19% (often covering a similar range within one core, Fig. 5). The Dmm lithofacies sampled from west of the large arcuate ridges (Fig. 2a) has lower magnetic susceptibility values (<36 10⁻⁸ SI; Fig. 5) than those recorded from east of the ridges (>90-181 10⁻⁸ SI; Fig. 5).



Foraminiferal tests are rare within the moderately-consolidated Dms lithofacies and are usually abraded and broken. Benthic foraminifera populations in this lithofacies are characterised by high percentages of *E. clavatum* ranging up to 65% in core 14-59 (Fig. 5).

The base of cores 10-36, 14-41 and 14-54 consists of consolidated (~50 kPa) laminated mud lithofacies (Fl). Similar consolidated Fl and massive mud (Fm) lithofacies overlie diamictons at the base of cores 14-53 and 14-57 (Fig. 5). The mud is typically laminated (Fl) but at the base of core 10-36 it is massive (Fm); these lithofacies are further refined based on the presence of dropstones and shear planes, which are henceforth abbreviated -(d) and -(s) in the lithofacies abbreviations, respectively, following the codes established by Eyles et al. (1983). Deformed Fl lithofacies are also interbedded in the Dmm diamicton of core 14-59. Grainsize analysis of this lithofacies typically reveals small percentages (<1.5%) of >1 mm lithic grains and in core 14-41 no clasts were detected. However at the base of core 14-54 there is a peak of >1 mm grains that represents 14.5% of the sediment (by weight) and in cores 10-36, 14-54 and 14-57 large, randomly oriented limestones are commonly observed (Fig. 5). Limestone abundance decreases upwards through the mud lithofacies in cores 10-36 and 14-54. The mud is well sorted and silty with mean percentages of sand, silt and clay in cores 10-36, 14-41, 14-54 and 14-57 approximately 16%, 55% and 29%, respectively (Fig. 5). The mud is greyish brown to greenish black in colour (2.5Y 5/2, 2.5Y 4/1, Gley 1 2.5/ 10Y). Shear stress values range from moderate to high (22-80 kPa) and typically decrease upwards through the cores (Fig. 5). This lithofacies is characterised by relatively high wet bulk densities (~2.1 g/cm³), moderate water content (14-19.8%) and typically high magnetic susceptibility (~62-90 10⁻⁸ SI) in cores 14-41, 14-53, 14-54 and 14-57. The westernmost occurrence of this lithofacies, in core 10-36 (Table 1, Fig. 2a), has a markedly lower magnetic susceptibility of 11 10⁻⁸ SI (Fig. 5).

Shear planes are common in the compact muds and displacement of laminae records both extensional and compressional strain (Fig. 4d, e). Compressional strain (thrust faulting) is only identified in compact mud with shear strength values >50 kPa. Compressional deformation in compact Fl sediment from core 14-41 can be seen in x-radiographs to have a displacement of >2 cm along a shear plane tilted 40° from horizontal (Fig. 4-). Clasts proximal to the shear planes occasionally show preferential a-axis alignment parallel to the plane (Fig. 4d, e). In core 14-59 the Fl lithofacies consists of rhythmic, ~1 cm thick, sandy laminae with sharp lower contacts that fine upwards to mud; these laminae are deformed and show distinct inhomogeneous ductile folding (Benn and Evans, 1996; Fig. 4b).

The benthic foraminiferal population in the consolidated mud lithofacies of cores 10-36, 14-53 and 14-54 contains high percentages (relative abundance up to 38%) of well-preserved tests of *Elphidium excavatum forma clavatum* (Feyling-Hanssen, 1972) (Fig. 5). However this lithofacies is otherwise poor in biogenic material and in several locations (cores 14-41 and 14-57), no benthic foraminifera tests were identified in this lithofacies. In cores 14-41 and 14-57 the stiff mud is devoid of shell fragments and very few foraminifer tests were discovered (Fig. 5).

3.2.2. LFA 2: Loose diamicton (Dmm) and mud (Fl(d), Fm)

Massive, muddy diamicton (Dmm) with moderate to low shear strengths (~5-40 kPa, typically <20 kPa) occupies the base of core 10-45 and overlies the consolidated and deformed sediment of LFA 1 in cores 10-35, 10-40, 10-42, 10-44, 14-36, and 14-59 (Fig. 5). This sediment is lithologically and structurally similar to the underlying, consolidated diamicton, but is less compact and often has a higher water content and lower density than the basal deposits (Fig. 5). Like the underlying, moderately consolidated diamictons, the loose Dmm lithofacies contain variable amounts of pebble-sized clasts that comprise several lithologies. The loose Dmm contains higher amounts of sand than

the underlying diamictons and the sand content typically increases up core (Fig. 5). There is a distinct decrease in the number of lithic grains >1 mm in core 10-40 between 2.05 m bsf and 1.92 from 91.3 grains/g to 1.7 grains/g; this decrease roughly correlates with a drop in the mass percentage of >1 mm grains (Fig. 5). In cores 10-35 and 10-45 (on the outer shelf; Fig. 2a) the loose Dmm lithofacies is characteristically greyish brown (2.5Y 5/2 or 2.5Y 4/2) and often sandier than the diamicton sampled from other parts of the shelf (Fig. 5).

The benthic foraminifera population of the loose Dmm lithofacies contains high amounts of *E. clavatum*, including the highest percentage observed in the analysed cores (73%, core 10-40; Fig. 5). The loose Dmm lithofacies typically contains more shell fragments than the underlying diamictons and the abundance of shell fragments often increases upwards (Fig. 5). Visual inspection reveals vertical to sub-vertical, sandy, granule and shell-fragment rich irregularities that commonly extend downwards into the top of the Dmm diamicton from the overlying lithofacies.

Loose to moderately-consolidated (20-50 kPa) mud lithofacies overlies consolidated mud lithofacies in cores 10-36, 14-41, 14-54, and 14-57 (Fig. 5). The loose or moderately-consolidated mud lithofacies are typically laminated (Fl) but massive in core 10-36. This sediment is lithologically and structurally similar to the underlying, consolidated mud deposits, but is less compact and usually has a higher water content and lower density than the basal deposits (Fig. 5). Lonestones of variable lithologies are common in this lithofacies, but are typically less abundant than in the underlying mud deposits and often decrease in abundance up core (Fig. 5). Shear planes are common in the loose mud lithofacies in cores 14-41, 14-54 and 14-57 (Fig. 5). At ~0.5mbsf in core 14-54 the loose Fl(s) lithofacies contains an unconsolidated, sandy, softsediment clast (Fig. 5).

The benthic foraminifera population of the loose mud lithofacies is dominated by *E. clavatum* and reaches relative abundances from 30% to 38% (Fig. 5). Vertical to sub-vertical, sand and shell-fragment rich irregularities commonly extend downwards into the top of the loose mud lithofacies from the overlying deposits (Fig. 5).

3.2.3. LFA 3: Coarse, clast-supported lithofacies (Dcm, GO) and shell hash (SH and GSH)

Coarse, massive, clast-supported diamicton (Dcm) or openwork gravel (GO) overlies the muddy and diamictic lithofacies of LFA 1 and LFA 2 in eight of the cores examined in this study (10-35, 10-38, 10-42, 10-44, 10-45, 14-42, 14-57, 14-59). These facies are relatively thin, ranging from 5 to 25 cm in thickness (Fig. 5). Lower contacts are typically diffuse, except above the Dmmc lithofacies in core 10-38, the Fl(s) lithofacies in core 14-57 and the Dmm lithofacies in core 14-59 (Fig. 5). This lithofacies consists of small to large pebblesized clasts of variable lithologies and roundness, surrounded by varying amounts of coarse sandy matrix. A clast in the Dcm facies in core 10-45 exhibited striations, a “rounded nose” and a “plucked lee” (Peters et al., 2015; Fig. 5). In core 10-38, the Dmmc lithofacies is overlain by GO gravel with rare granules occupying the interpebble cavities (Fig. 4h). Grain-size analyses reveal moderate to high percentages of lithic fragments >1mm (typically >20% and up to 46% in core 10-45, Fig. 5). Matrix material is dominated by sand (>60-90%) and typically contains shell fragments. The colour of this lithofacies is highly variable, but the matrix is often similar in colour to the underlying diamicton; conversely, in cores 10-38, 14-57 and 14-59 (where these lithofacies have sharp lower contacts), the GO and Dcm matrix material is more similar to the overlying sediment. This lithofacies is characterised by high wet bulk densities (up to 2.5 g/cm³ in cores 10-35 and 14-59), low water content (13.5-14.5%) and highly variable magnetic susceptibility, often with irregular peaks above or below the core mean (Fig. 5).

The foraminifera sampled from the matrix material of the Dcm facies were often broken and abraded (cf. Peters et al., 2015). Well preserved *E. clavatum* are rare in the Dcm sediment (>5% relative abundance), but occasionally high numbers were recovered in the surrounding deposits (31.1-44.8% relative abundance in core 14-59, Fig. 5). Shell fragments are common in the Dcm and GO lithofacies and lower contacts are commonly bisected by poorly-sorted, vertical to sub-vertical, sandy, granule and shell-fragment rich inclusions.

A shell hash (SH) or gravelly shell hash (GSH) consisting primarily of highly fragmented bivalve shells overlies the diamictic and muddy lithofacies in cores 10-40, 14-41, 14-53, 14-54, 14-59 (Fig. 5). This lithofacies has both diffuse and sharp lower contacts and varies from 7 to 148 cm in thickness (Fig. 5). The shell hash occurs most commonly and typically with the greatest thickness in the easternmost cores. Rounded, pebble sized clasts of variable lithologies are common in the GSH deposits in cores 10-40 and 14-41 (Fig. 5). Grain-size analyses of the <1 mm sediment fraction of the SH lithofacies in core 14-59 reveal the small amounts of matrix sediment to be 100% sand (Fig. 5). In core 10-40, the GSH sediment contains a high percentage of granules >1 mm (64.5-80.8%, Fig. 5). The colour of this lithofacies is variable, but typically light yellowish brown to light olive brown (2.5Y 6.4 to 2.5Y 5/6). This lithofacies is characterised by highly variable wet bulk densities with erratic peaks that usually fall well above the core mean, magnetic susceptibility values below the core mean, low shear stress measurements (<6 kPa), and low water content (<17.3%, typically <7% and as low as 3.9% in core 10-40, Fig. 5).

The foraminifera sampled from the sand matrix of the shell hash deposits were often broken and abraded. The indicator species *E. clavatum* is relatively rare in the SH and GSH lithofacies and shows an upwards decrease in abundance (e.g. cores 10-40 and 14-59, Fig. 5). In cores 14-41 and 14-54, lower contacts are bisected by vertical to sub-vertical sandy, granule and shell-fragment rich irregularities.

3.2.4. LFA 4: Sandy lithofacies (Sh, Suf, Sm)

The top of each of the cores analysed for this study, with the exception of core 14-59 (the easternmost core), is composed of massive (Sm), upward fining (Suf) or crudely horizontally bedded sand (Sh) lithofacies; the sand is 6-50 cm thick and usually has sharp lower contacts (Fig. 5). These lithofacies are well sorted with grain-size analyses revealing very high amounts of sand (up to 94% in core 14-41, Fig. 5). The sandy deposits from the westernmost cores (10-35, 10-36, 10-42, 10-44) are greyish brown (2.5Y 5/2); in the remaining cores, the sand is light yellowish brown (2.5Y 6/3) to olive yellow (2.5Y 6/6) in colour. This lithofacies is characterised by low wet bulk densities (often <2.0 g/cm³) that decrease upwards, low shear strengths (<5 kPa), moderate to high water contents (usually >20%) that increase upwards, and often low magnetic susceptibility values (usually <40 10⁻⁸ SI) that are less than core mean values (Fig. 5). Moderate magnetic susceptibility values from ~62 to as much as ~70 10⁻⁸ SI are recorded from cores 14-41, 14-42, 14-54, 14-57 and 14-59 (the easternmost cores, Fig. 2a).

The sand lithofacies yielded few *E. clavatum* tests, often with no individuals found near the core tops (Fig. 5). Shell fragments are abundant near the bottom of these lithofacies, but usually decrease in size and occurrence upwards (e.g. 20-5 cm bsf in core 10-35, Fig. 4j). Irregularly shaped areas of relatively low density, composed of poorly-sorted, shell-fragment rich material are common (Fig. 4j).

3.3. Chronology

Five samples of calcareous, marine biogenic material were dated using AMS radiocarbon analyses (Table 2). All samples were well preserved, with little to no abrasion, breakage or discolouration. The samples were taken from glacial material collected on the continental shelf. Three AMS radiocarbon ages from a previous study (Peters et al., 2015) on the Porcupine Bank and Slyne Trough are also recalibrated for use in this study (Table 2). The oldest age on the shelf west of Ireland (24,067 Cal BP) is sampled from core 14-44 in the Slyne Trough (one of the westernmost cores). The age distribution across the shelf reveals a typical eastward trend of younger sediment deposition, with the youngest age of 15,148 Cal BP from the easternmost core (14-59, Table 2).

4. Interpretation

4.1. Geomorphology

4.1.1. Seafloor ridges

The arcuate and nested shapes, scale and orientation of the seafloor ridges are inconsistent with the regional, bedrock-controlled geomorphic trends discernible in the topographic DEM (Fig. 2a), but they are comparable to submerged moraines (e.g. Bradwell et al., 2008; Ó Cofaigh et al., 2010). This suggests that the ridges are likely formed in association with marine-terminating ice margins during glacial advance or retreat on the shelf. The asymmetrical profile and arcuate shape of the westernmost corrugated ridge (Figs. 2a, b, 3b, c) is consistent with deposition as a push moraine with a steep ice-distal flank to the west (Boulton, 1986). The corrugations on its southern end are aligned with the sinuous ridges in the Slyne Trough, which have been interpreted as a record of grounded ice extent, followed by ice shelf recoupling during retreat (Peters et al., 2015). The ridge-corrugation alignment (Fig. 2b) suggests that the corrugations may have been formed contemporaneously and by the same mechanism as the ridges in the Slyne Trough. Thus we tentatively interpret the arcuate ridge to be a push moraine that was subsequently overridden by an ice shelf that extended over the Slyne Trough (Peters et al., 2015). This interpretation is supported by the southward broadening of the arcuate ridge, which is consistent with moraines that were overridden and smoothed by readvancing ice (e.g. Bentley et al., 2007; Jonsson et al., 2014). This partially overridden, westernmost arcuate ridge is henceforth referred to as the West Ireland Moraine (WIM).

The arcuate shape of the largest, southernmost ridge in the study area (Fig. 2a) is consistent with ice-marginal deposition against BIIS marine termini (cf. Bradwell et al., 2008; Ó Cofaigh et al., 2010). Its flat-topped profile (Fig. 3b, c) suggests deposition below a floating ice mass that constrained vertical accretion (Dowdeswell et al., 2008; Batchelor and Dowdeswell, 2015). Thus, we interpret this landform as a grounding-zone wedge that formed against an ice lobe with a floating ice shelf. Because of the location of the ridge on the continental shelf, we interpret the ice lobe to have most likely emanated from south of the Maumturk Mountains, roughly centred on Galway Bay (Fig. 2a); thus, this feature is henceforth referred to as the Galway Lobe Grounding-Zone Wedge (GLGZW). The low-relief, flat-topped landform that forms the western flank of the GLGZW (Figs. 2 and 3) is interpreted to most likely record an earlier phase of grounding-zone wedge deposition because of its geomorphic similarities to the GLGZW. Therefore, we interpret both flat topped landforms to be components of a complex, grounding zone deposit that was built under ice shelves with variable thicknesses along an apparently bathymetrically controlled grounding zone (cf. Ó Cofaigh et al., 2005). The dimensions of the GLGZW (~150 km long and 22 km wide) are similar to some large Antarctic grounding-zone wedges (Evans et al., 2005) and indicate that it likely records a significant (i.e. centuries long) stillstand during BIIS retreat (cf. Dowdeswell et al., 2008).



The ridge situated directly east of the GLGZW (Fig. 2a) is interpreted to most likely be a recessional or readvance moraine based on its smaller size and nested relationship to the larger ridge (cf. Ó Cofaigh et al., 2010). Because of its similar orientation, which is indicative of ice extension roughly from Galway Bay, this moraine was likely formed by ice draining a similar area to the GLGZW. Thus, this moraine is henceforth referred to as the Galway Lobe Readvance Moraine. However, the term 'readvance' is used tentatively on the basis of only the geomorphic evidence.

The two arcuate ridges north of the GLGZW have steep, asymmetric flanks (Figs. 2 and 3a) consistent with deposition as push moraines (Boulton, 1986). The smaller, southern ridge truncates the GLGZW and the northern ridge, indicating that it likely formed during ice overriding of the surrounding landforms following their deposition. Based on their relatively close proximity to land (within ~25 km, Fig. 2a), their well-preserved, steep-sided morphology, and cross-cutting nature of these ridges, they are interpreted to have been formed during the readvance of ice lobes across the shelf (cf. Bradwell et al., 2008). The smaller, evidently younger ridge is henceforth referred to as the Connemara Lobe Moraine because it is positioned offshore of the mountainous Connemara district (Fig. 2a). The arcuate ridge situated north of the Connemara Lobe Moraine is interpreted as an older recessional or readvance moraine that likely extended onto the shelf from ice sources that drained past Clew or Blacksod bays from County Mayo based on its geographic position (Figs. 1 and 2a). This landform is henceforth referred to as the Mayo Lobe Moraine.

4.1.2. Seafloor furrows

The seafloor furrows are interpreted as iceberg scours based on their irregular, occasionally meandering, trajectories and the presence of adjacent lateral berms (Belderson et al., 1973; Dowdeswell et al., 1993; Ó Cofaigh et al., 2002, 2010; Fig. 3d). Their abundance on the shelf in water depths approximately <350 mbsl suggests a local iceberg source and supports an interpretation of ice shelf formation and subsequent break up west of the GLGZW (Peters et al., 2015). When identified, the gradual scour termini mark the deepest water depths of the scours and the abrupt, pit-like depressions mark the shallowest points (cf. Andreassen et al., 2014; Fig. 2c). Thus, the gradual and abrupt termini are interpreted to record the inception of iceberg contact with the seafloor and iceberg grounding pits, respectively (cf. Hill et al., 2008; Andreassen et al., 2014). The abrupt scour termini in the Slyne Trough are typically located at the northern ends of the scours, indicating a northward or northeastward palaeocurrent (cf. Peters et al., 2015) or a combination of current and wind interaction. The corrugated troughs that characterise some scours are interpreted as the signature of tidal action on the grounded icebergs (cf. Jakobsson et al., 2011). Rare parallel furrows (Fig. 2c, d) indicate the grounding of large icebergs with multiple keels and suggests calving from a collapsing ice shelf (Andreassen et al., 2014).

4.2. Sedimentology

Four Lithofacies Associations (LFAs) are identified in the cores and record the sedimentary history from BIIS advance to Holocene postglacial marine sedimentation. Without sub-bottom seismic stratigraphic data, these lithofacies are assumed to sample the glacial landform-creating sediment in cores 10-35, 10-38, 10-40, 10-42, 10-44, 10-45, 14-36, 14-42, 14-54, 14-57 and 14-59 because of their penetration depths (up to 4.0 m) and close proximity (usually in contact with, occasionally ~440 m) to the landforms (Fig. 2a). This assumption is reinforced by sedimentological similarities to glacially-derived sediment described by previous studies from formerly glaciated continental shelves (e.g. Ó Cofaigh and Dowdeswell, 2001; Dowdeswell et al., 2004; Evans et al., 2005; Ó Cofaigh et al., 2005, 2011; Hillenbrand et al., 2010).



4.2.1. Lithofacies association 1 (ice-contact deposition/reworking)

LFA 1 consists of Dmmc, Dmm, Fl(s) and consolidated or deformed Fm lithofacies. The Dmmc diamicton at the base of cores 10-38, 10-42, 10-44, 14-36, 14-42 and 14-54 (Fig. 5) is interpreted as an overconsolidated subglacial traction till based on its high shear strength, massive structure, high wet bulk density and low water content (cf. Wellner et al., 2001; Evans et al., 2005; Ó Cofaigh et al., 2005; D. Evans et al., 2006a). Striated clasts within the Dmmc diamicton also support a subglacial depositional environment (Sharp, 1982). Areas of high shear strength (50-197 kPa, Fig. 5) suggest thick ice, low pore-water pressures and potentially low iceflow velocities (non-streaming) (Sættem et al., 1996; cf. Dowdeswell et al., 2004). Preferentially-oriented clast a-axes indicate alignment with strain during subglacial till formation (Benn and Evans, 1996; Bennett and Glasser, 2011; van der Meer et al., 2003; J. Evans et al., 2006b). Microfossil damage is consistent with the cannibalisation and subglacial reworking of preglacial marine sediment (Ó Cofaigh et al., 2011); sediment devoid of foraminiferal tests suggests a terrigenous sediment supply. A coral fragment from core 10-44 is AMS radiocarbon dated to 24,067 Cal BP. This date is interpreted to constrain the maximum age of the till deposited during the advance of the last BIIS (Peters et al., 2015; Table 2).

The Dmm at the base of cores 10-35, 14-57 and 14-59 and overlying the overconsolidated basal till in cores 14-36 and 14-53 (Fig. 5) is also interpreted as a subglacial traction till, associated with deformation of dilatant sediment, because of its massive or crudely stratified structure and moderate shear strengths that gradually decrease upwards (Benn and Evans, 1996; J. Evans et al., 2005, 2006b; D. Evans et al., 2006a). Sandy, vertically oriented inclusions with moderate shear strength (40 kPa) in core 14-53 (Fig. 5) are interpreted as dewatering structures and, along with the increase in water content (up to 19%) relative to the underlying, stiff basal till, indicate higher porosity and pore-water pressures (Rijsdijk et al., 1999; van der Meer et al., 1999). Furthermore, clast lithology, magnetic susceptibility and foraminiferal content is comparable between the Dmm and Dmmc lithofacies, suggesting that the former is derived from the reworking of the latter (cf. Dowdeswell et al., 2004; Evans et al., 2005; Kilfeather et al., 2011). An unabraded, unbroken, parasitized bivalve shell in the till near the base (325 cm bsf) of core 14-59 (Fig. 5) is AMS radiocarbon dated to 15,148 Cal BP (Table 2). This age indicates that the ice advanced over and incorporated material that was biomineralized late in MIS 2. This suggests that either an ice mass readvanced to this point or icebergs grounded against moraines on the shelf at least 1000 years after the Killard Point Stadial.

The highly-consolidated, silt-rich Fl(d) and Fl(s) deposits overlying the subglacial tills in cores 10-36, 14-41, 14-53, 14-54 and 14-57 are interpreted as glactectonised glaciomarine sediment based on their preserved primary structures (laminae), thrust faults and high shear strengths (Benn and Evans, 1996). The sediments were likely originally deposited proglacially by suspension settling from sediment plumes based on their high silt content, parallel laminae and dropstones (Ó Cofaigh and Dowdeswell, 2001). Areas devoid of foraminiferal tests and with few dropstones in cores 14-41 and 14-57 support an interpretation of terrigenous sediment supply in an ice-proximal, possibly sub-ice shelf environment. These sediments were likely glactectonised penecontemporaneously during recoupling. Conversely, glactectonised suspension plume sediment (Fl(d) and Fl(s)) with abundant *E. clavatum* tests in cores 10-36, 14-53 and 14-54 (Fig. 5) is interpreted to have been deposited proglacially prior to being overridden (cf. Ó Cofaigh et al., 2011). The sharp lower contacts and normal grading of the folded Fl lithofacies in core 14-59 (Figs. 4b and 5) indicate a glaciomarine primary depositional environment. The laminae are interpreted as having been deposited by suspension settling from meltwater plumes (plumites) based on their rhythmic nature, sharp lower contacts and upward fining (Dowdeswell et al., 2000). The ductile, inhomogeneous folding identified

in the Dms lithofacies of core 14-59 is interpreted to record compressional strain. The evidence for compressional strain and moderate shear strength (up to 28 kPa) in the folded sediment are consistent with glaciotectionisation from an overriding ice mass (Benn and Evans, 1996; O Cofaigh et al., 2011). An interpretation of ice readvance over these sites is supported by two AMS radiocarbon dates acquired from relatively wellpreserved (i.e., light surface abrasion but little discolouration or fracturing) mixed benthic foraminifera (dominantly *E. clavatum*) that were sampled from within the glaciotectionite of cores 14-53 and 14-54 (Table 2, Fig. 5). The ages constrain the biomineralization of tests within the glaciotectionite to 21,161 Cal BP (core 14-54, Table 2) west of the GLGZW and 18,517 Cal BP (core 14-53, Table 2) east of the GLGZW. These ages suggest a readvance of the ice sheet across the shelf either associated with glaciodynamic adjustments during deglaciation or possibly related to climate forcing during the Killard Point (Heinrich event 1) stadial (McCabe and Clark, 1998; McCabe et al., 2005, 2007; Clark et al., 2009a, 2009b, 2012b, and references therein).

4.2.2. Lithofacies association 2 (*Glaciomarine deposition and iceberg turbation*)

This LFA consists of Dmm, Fl(d) and Fm lithofacies with a deposit of Sm lithofacies in core 14-53 (Fig. 5). The loose, greyish-brown Dmm diamicton overlying the till and glaciotectionite in cores 10-35, 10-42, 10-44 and 14-36 and at the bottom of cores 10-40, 10-45 and 14-59 (Fig. 5) is interpreted as the signature of meltwater-derived sediment-plume suspension settling (plumite) with high IRD input (rain-out sediment) based on its low to moderate shear strength (6-25 kPa), high water content, abundance of outsized lonestones, and highly variable wet bulk density and magnetic susceptibility (cf. Hillenbrand et al., 2005; Lucchi et al., 2013). Similarly, the loose, greyish-brown mud overlying the glaciotectionite in cores 10-36, 14-41, 14-54 and 14-57 (Fig. 5) is interpreted as proglacial, retreat-phase suspension plume sediment with more meltwater-derived fines and less IRD than the massive diamicton, based on its laminated structure, high silt content, moderate shear strength (20-40 kPa), and variable wet bulk density and magnetic susceptibility (Dowdeswell et al., 2000; O Cofaigh and Dowdeswell, 2001). The massive, shelly sand (Sm) from 32 to 49 cm bsf in core 14-53 is highly deformed (indicated by large areas of loose sediment or void space against the core liner; Fig. 5) but tentatively interpreted as a postglacial current deposit or sandy rain-out deposit that dewatered and mixed with the overlying shell hash during core acquisition. The rain-out sediment in the three westernmost cores from the Slyne Trough (10-42, 10-44 and 10-45, Fig. 2a) has previously been interpreted as in situ, subice shelf and ice-proximal rain-out sediment based on micropaleontological data, clast abundance and lithologic similarity (Peters et al., 2015). Variability in the wet bulk density and magnetic susceptibility is interpreted as a signature of the high sediment heterogeneity. The mud component in LFA 2 typically decreases upwards (Fig. 5), which is also consistent with an interpretation of increasingly ice-distal glaciomarine sedimentation (cf. Smith et al., 2011). Zones of high clast density within the cores (e.g. core 10-40, Fig. 4c) are probably related to increased delivery of IRD to the core sites and their rhythmic occurrence is likely a record of a seasonal IRD production (Cowan et al., 1997) or seasonal sea-ice cover that suppressed iceberg activity (Dowdeswell et al., 2000; O Cofaigh and Dowdeswell, 2001). This rain-out deposit is dated to 21,841 Cal BP (core 10-45, Table 2) in the Slyne Trough (Peters et al., 2015) and an AMS radiocarbon date from a well preserved (unbroken and unabraded), paired bivalve shell sampled from 45 cm bsf in core 10-35 (Fig. 5) provided an age of 20,944 Cal BP (Table 2). This date constrains the age of deposition for glaciomarine sedimentation and BIIS retreat from the Slyne Trough.

The genesis of plumite and rain-out sediment is further refined based on IRD abundance, secondary structures, biogenetic content, and the presence of vertical to sub-vertical shell-fragment rich sand intrusions interpreted as related to bioturbation. Grounding lineproximal sediment is identified at the

base of the proglacial deposits based on high IRD abundance, a lack of bioturbation or macro-shell fragments, and a benthic foraminiferal population dominated by *E. clavatum* (cf. Lucchi et al., 2013). Conversely, grounding line-distal deposits are differentiated by the presence of unabraded bivalve shells and fragments, reduced or absent IRD sedimentation and bioturbation towards the top of the deposit (cf. L'owemark et al., 2015).

Post-depositional reworking, likely from iceberg turbation, or debris flows is identified above the till in cores 14-41, 14-42 and 14- 57 and overlying the proglacial plumite in core 14-54 based on occasional shear planes and soft sediment rip-up clasts in loose sandy mud (cf. Hillenbrand et al., 2013). These deposits are differentiated from the subglacial till by their typically lower shear strengths (<40 kPa) and higher water content (Fig. 5). Loose diamicton overlying an iceberg-rafted deposit in core 10-44 is also interpreted as reworked by local iceberg turbation or possibly mass wasting on the flank of a Slyne Trough Moraine based on its lithologic similarity to the underlying sediment, abruptly lower shear strength and increasing sand content (cf. Vorren et al., 1983; Dowdeswell et al., 1994; Fig. 5). Iceberg turbate formation in the Slyne Trough is supported by previous micropalaeontological and geomorphic research that documents an increase in foraminiferal test damage and intense iceberg scouring in the interval we interpret as reworked (Peters et al., 2015). An anomalously young radiocarbon age (15,876 Cal BP) from this reworked interval in core 10-44 is comparable to other chronologic inconsistencies in iceberg turbates (e.g. Hillenbrand et al., 2010) and suggests that on-ridge reworking occurred <16,000 yr BP.

4.2.3. Lithofacies association 3 (glacial to postglacial transition)

Lithofacies association 3 consists of four lithofacies (Dcm, GO, SH and GSH) deposited between the overlying sandy lithofacies of LFA 4 and the underlying glacial sediments of LFAs 2 and 1. Clasts within the Dcm diamictons and GO gravel are lithologically similar to those in the underlying deposits, suggesting a similar sediment source. Therefore the reduction in matrix material in LFA 3 suggests either increased rates of IRD production (cf. Kilfeather et al., 2011) or sediment winnowing (Eyles, 1988). The Dcm diamicton from the western Slyne Trough (cores 10-42, 10-44 and 10-45, Fig. 2a) that overlies the sub-ice shelf sediment has previously been interpreted as intense IRD rain-out sediment that records ice shelf breakup and subsequent current winnowing (Peters et al., 2015).

The SH and GSH lithofacies are composed largely or entirely of upward-fining bivalve shells and fragments within very small amounts of sand matrix, suggesting fine sediment winnowing in a biologically active palaeoenvironment (Flemming et al., 1992). The shell-rich deposits are interpreted to record sea level transgression based on their sharp lower contacts, upward fining and winnowed fines (cf. Chang et al., 2006). The shell hash of core 14-53 contains an 8-cm thick unit of massive, shell-rich sand (Fig. 5) that we interpret to likely record a period of relative, local palaeocurrent quiescence.

4.2.4. Lithofacies association 4 (postglacial deposition/reworking)

This LFA consists of Sh, Suf and Sm lithofacies. The poorly-sorted, yellowish sand at the top of all cores except core 14-59 (Fig. 5) is interpreted as postglacially reworked sediment based on its low mud content, low shear strength, typically low wet bulk density and high water content (cf. Hillenbrand et al., 2013). Upward fining sand at or near the top of cores 10-35, 10-40, 10-42, 10- 44 and 10-45 (Fig. 5) indicate reworking by gradually weakening bottom currents (Bishop and Jones, 1979; Fyfe et al., 1993; Viana et al., 1998), which is in accord with interpretations of winnowing in the underlying transitional sediments of LFA 3. Previous micropaleontological research on the Porcupine Bank is also compatible with an interpretation of winnowing and reworking by bottom

currents (Smeulders et al., 2014; Peters et al., 2015). This upwards waning in palaeocurrent activity is interpreted as a record of postglacial sea level transgression across the continental shelf (cf. Amorosi et al., 1999; Barrie and Conway, 2002).

4.3. Core correlation and regional stratigraphy

Core correlations are based on LFA interpretations and from this four stratigraphic transects are produced that extend from west to east across the study area (Fig. 6). These transects cross all of the major glacigenic landforms in the study area and reveal glacial and postglacial depositional trends west of Ireland. The stratigraphic sequence is generally consistent between the cores and shows the following vertical stratigraphic sequence: subglacial traction till which shows a progressive decrease in shear strength upwards, glacioteconite, glaciomarine deposits (plumite and iceberg-rafted sediment), a transgressive lag and current-reworked sand (Fig. 6). However, the following lateral patterns in sediment distribution across the shelf are also identified: (1) a general eastward (landward) increase in glacioteconite, (2) a prevalence of reworked sediment near the GLGZW, (3) a general eastward thickening of the transitional, transgressive deposits (LFA 3), and (4) an occasional, marked thickening of the glaciomarine and postglacial deposits to the east of large moraines (e.g. cores 10-40, 10-45, 14-59, Fig. 6). The ~2-4 m thick sedimentary record of the western Irish continental shelf is dominated by the glacigenic deposits of LFA 1 (Fig. 6). Subglacial traction tills are common at the base of the Midlandian glacial sedimentary record west of Ireland and their occurrence confirms previous research documenting grounded BIIS extension across the continental shelf (e.g. Ó Cofaigh et al., 2010; Peters et al., 2015). A less-compact till with a diffuse lower contact often overlies the lowermost stiff basal till in cores from the shelf. This relatively soft till records increased pore water pressures that may have been caused by the underlying clay-rich, and thus lower porosity, stiff till which would have acted to impede pore water expulsion from the soft till (Fischer et al., 1999; Lian and Hicock, 2000; J. Evans et al., 2006b). In places the tills are covered by glacioteconite up to ~1 m thick (Fig. 6). This glacioteconite is most common towards the east of the study area (i.e. landward) and frequently occurs on the flanks of the Galway Lobe Moraine (Fig. 6).

A glaciomarine deposit with a diffuse lower contact overlies the till and glacioteconite in all cores except 10-38 (Fig. 6). It is interpreted as a product of suspension settling from meltwater plumes during BIIS retreat. It ranges in thickness from 12 to 224 cm thick with a mean thickness of ~75 cm. The thickest glaciomarine deposits are massive, muddy, IRD-rich diamictons; these deposits are >100 cm in the Slyne Trough (Cores 10-44 and 10-45) and just east of the Connemara Lobe Moraine (core 10-40, Fig. 6). These areas of thick glaciomarine deposition are interpreted as a record of either prolonged sub-ice shelf (cf. Kilfeather et al., 2011) or iceberg rafted sedimentation. The lack of glaciomarine sediment in core 10-38 is interpreted as an erosional unconformity caused by current winnowing, possibly facilitated by the bathymetric high formed by the Connemara Lobe Moraine (Figs. 2a and 3a).

Areas of remobilised glaciomarine sediment overly the plumite near moraines (cores 10-44, 14-42, 14-54 and 14-57) and, less frequently, on the inner shelf (core 14-41) (Fig. 6). Most of these reworked deposits likely record iceberg turbation on or near moraine ridges. This interpretation is consistent with a previous examination of iceberg plough mark geomorphology in the Slyne Trough, which documents iceberg grounding against moraine ridges and a roughly northward palaeocurrent (Peters et al., 2015). Postglacial mass wasting, which likely would have been most intense on the morainic ridges, is another potential source for sediment reworking (cf. McCabe, 1986).

A unit of shell-bearing, bottom-current-winnowed sediment interpreted to record a transitional period from glacial to postglacial conditions overlies the glaciomarine deposits in each core except core 10-36 (Fig. 6). These transitional sediments range in thickness from 6 to 146 cm (cores 10-35 and 14-59, respectively) and are thickest to the east (Fig. 6). This sediment also typically contains progressively more biogenic material towards the east (Fig. 6). The thickest (up to 21 cm) of the lithic-dominated, winnowed sediment units are found in the Slyne Trough; this is interpreted as a result of coarse sub-ice shelf or ice-proximal sediment supply that led to increased IRD production after ice shelf break up. The relative abundance of large lithic clasts was likely increased by winnowing from a northward Slyne Trough palaeocurrent that developed following ice shelf break up (Peters et al., 2015). Another thick, lithic, winnowed sediment unit overlies the highlyconsolidated, subglacial till at the base of core 10-38 (Figs. 5 and 6). This area (the crest of the Connemara Lobe Moraine, Figs. 2a and 3a) is interpreted to have experienced particularly high amounts of winnowing based on a lack of preserved glaciomarine sediment in core 10-38, the thickness of the winnowed transitional unit (20 cm), and the general absence of fine-grained sediment in the GO facies (Fig. 5). The eastern, shell-dominated, winnowed sediment is thickest within 50 km of shore (cores 10-40 and 14-59, Fig. 2a) where it is

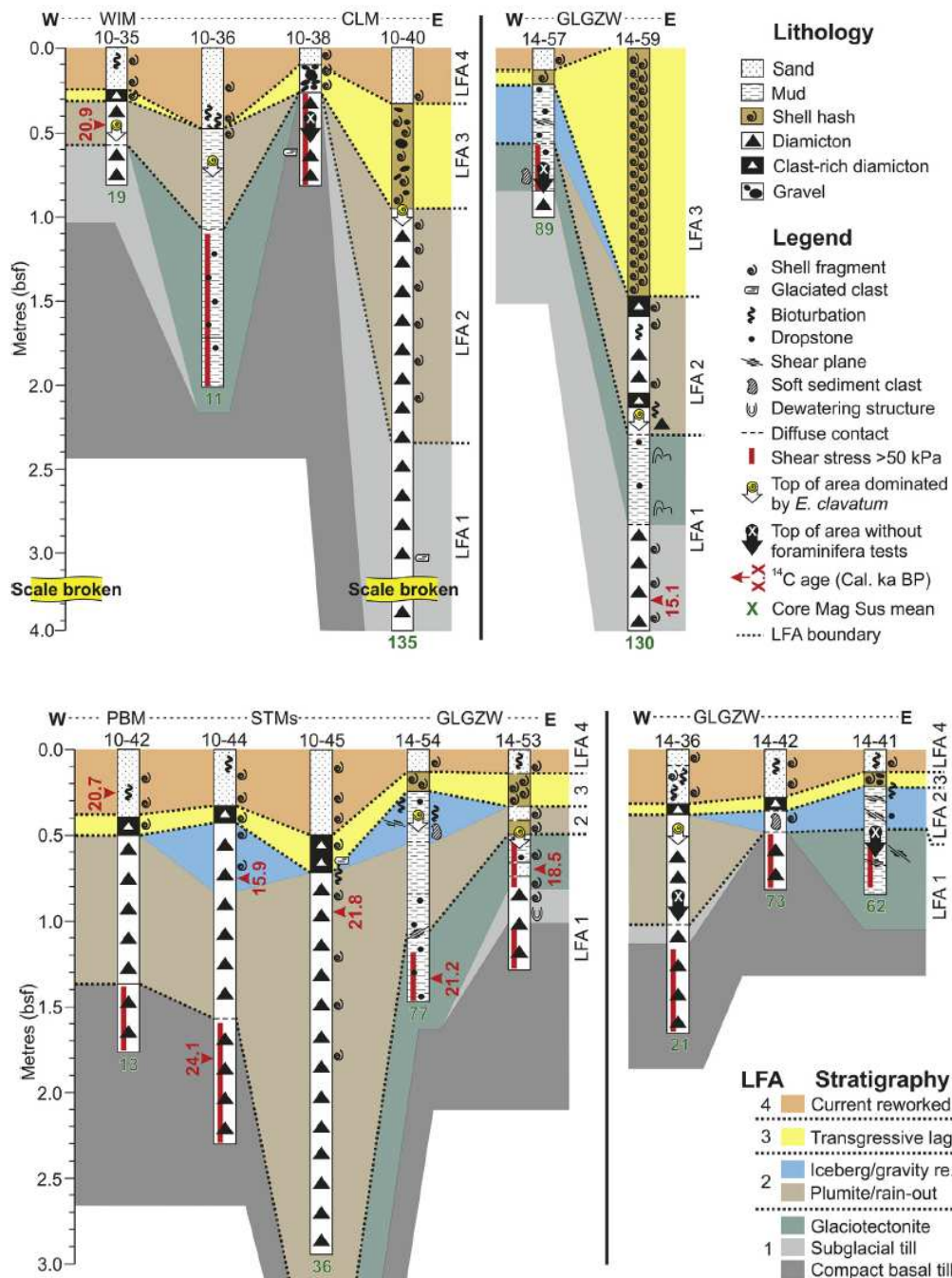


Fig. 6. Core correlations revealing continental shelf stratigraphy west of Ireland and exposing the glacial and postglacial depositional history associated with the last BIIS. Sediment core data is shown in detail in Fig. 5. Abbreviations: WIM ¼ West Ireland Moraine; KLM ¼ Killary Lobe Moraine; GLGZW ¼ Galway Lobe Grounding-Zone Wedge; PBM ¼ Porcupine Bank Moraine; STMs ¼ Slyne Trough Moraines.

largely composed of biogenic material (Figs. 5 and 6). The eastern thickening of the unit and increasing shell content is consistent with reworking during sea-level transgression (e.g. Saito et al., 1998), thus, we refer to these deposits collectively as a transgressional lag (cf. Chang et al., 2006).

Mean magnetic susceptibility values show a distinct eastward (i.e. shoreward) increase (Fig. 6). Values for cores >40 km west of the GLGZW and Connemara Lobe Moraine (cores 10-35, 10-36, 10-42, 10-44, 10-45; Fig. 2a) range from 11 to 36 10^{-8} SI (Figs. 5 and 6) with an average of 19.75 10^{-8} SI. Conversely, the magnetic susceptibility of cores from near to or east of these large moraines (Fig. 2a) ranges from 21 to 135 10^{-8} SI (Figs. 5 and 6) with a mean of 83.86 10^{-8} SI. This discrepancy is interpreted as the signature of increasing amounts of glacially-mobilised terrigenous sediment supply to the shelf (Robinson et al., 1995; Shevenell et al., 1996). This interpretation is supported by previous sedimentary interpretations in the Slyne Trough and Porcupine Bank (Peters et al., 2015).

Elphidium Clavatum was found to be the dominant benthic foraminifera below LFA 3 in most of the micropalaeontologically examined cores, usually near the contact with the overlying transgression lag (Figs. 5 and 6). The dominance of *E. clavatum* typically diminishes upwards in cores from the shelf (Fig. 5). This *E. clavatum* range indicates a palaeoenvironment with variable salinity, high sedimentation rates, cold (<1 °C) average sea temperatures, and potential sea ice cover (Mudie et al., 1984; Hald and Korsun, 1997; Polyak et al., 2002; Stalder et al., 2014). This inferred micropaleontological environment supports our sedimentological interpretation of glaciomarine deposition from meltwater and iceberg rafting with possible areas of seasonal sea ice cover. The bottom of the rain-out sediment in core 14-36 and the top of the subglacial sediment in cores 10-38, 14-41 and 14-57 are devoid of any foraminiferal tests (Fig. 6), indicating a depositional environment dominated by terrigenous sediment supply where little or no pre-glacial marine sediment was incorporated into the till (cf. Ó Cofaigh et al., 2011; McCabe and Clark, 2003).

5. Discussion

5.1. LGM ice sheet extent, configuration and chronology on the shelf west of Ireland

The moraines on the Porcupine Bank and Slyne Trough (Peters et al., 2015) and the large, arcuate WIM (Fig. 2) provide geomorphic evidence for an extensive grounded BIIS on the shelf west of Ireland. This geomorphic interpretation is also supported by the presence of subglacial traction tills in cores from the shelf (Fig. 6). These moraines appear to be restricted to less than ~350 mbsl (Fig. 2) and are oriented roughly parallel to the shelf break, suggesting that at maximum extent the BIIS consisted of a grounded ice mass that was calving into deep water (cf. Sejrup et al., 2005); this large ice mass was likely fed by ice draining from counties Mayo, Galway, Clare and Kerry, Ireland (Greenwood and Clark, 2009; Fig. 2a). Based on the geomorphic and sedimentary evidence documented in this study, the ice sheet at its maximum extended to within ~20 km of the shelf break. This is compatible with previous geomorphic reconstructions and conceptual models of the western BIIS (e.g. Sejrup et al., 2005; Greenwood and Clark, 2009).

The presence of overconsolidated subglacial traction tills with low water content at the base of the sedimentary sequence across the shelf west of Ireland (Fig. 6) suggests that initial BIIS advance was extensive and may have occurred largely without ice streaming (cf. Wellner et al., 2001; Shipp et al., 2002; Dowdeswell et al., 2004; Evans et al., 2005; Ó Cofaigh et al., 2005, 2007). This interpretation is also consistent with delayed IRD sedimentation on the Porcupine Bank in relation to the Rosemary Bank (Scourse et al., 2009).

The till blanket that covers the continental shelf (Fig. 6) is dated to 24,067 Cal BP (Table 2) in the Slyne Trough, within 50 km of the shelf break (cf. Peters et al., 2015, Fig. 2a). This is compatible with other radiocarbon ages that constrain initial advance of Irish Sea ice in the Celtic Sea (Fig. 1) to 24,000 Cal BP (Ó Cofaigh and Evans, 2007; Ó Cofaigh et al., 2012). An AMS radiocarbon age



from the glaciomarine sediment that drapes the WIM (Figs. 6 and 7) constrains the timing of ice-proximal, deglacial deposition to 20,944 Cal BP (core 10-35, Table 2). This age indicates that the WIM is blanketed by glaciomarine sediment from Midlandian deglaciation and its stratigraphic relationship to the underlying subglacial till suggests in turn that the WIM was deposited by the last BIIS during MIS 2. The 20,944 Cal BP age is ~900 years younger than glaciomarine sedimentation in the Slyne Trough (21,841 Cal BP, core 10-45, Table 2); this suggests that initial ice retreat may have started over the bathymetrically deep Slyne Trough.

5.2. Ice shelf chronology and BIIS dynamics during GLGZW formation

Sedimentological and micropalaeontological evidence in the Slyne Trough (Peters et al., 2015) indicate local BIIS uncoupling and ice shelf formation by 21,841 Cal BP (core 10-45, Table 2, Figs. 6 and 7). Ice shelf formation precedes the rapid sea-level rise recorded at Kilkeel Steps (Clark et al., 2004; Fig. 1) by ~2800 years and follows the Greenland Interstadial 2 warming event (~21,000 Cal BP) recorded by the GRIP ice core $\delta^{18}O$ record (Dansgaard et al., 1993; Björck et al., 1998) by <200 years. This chronologic sequence suggests that initial BIIS thinning over the Slyne Trough may have been the result of climate amelioration or variations in Atlantic Meridional Overturning Circulation (cf. Clark et al., 2012b).

The presence of the GLGZW indicates that the ice sheet underwent a still-stand on the mid-shelf following initial recession from the WIM. This must have occurred after the formation of an ice shelf over the Slyne Trough at 21,841 Cal BP, (core 10-45, Table 2; Peters et al., 2015) and prior to the biomineralization of foraminiferal tests found in core 14-54 (21,161 Cal BP, Figs. 6 and 7). This means that the grounding zone retreated eastward across ~50 km of seafloor over a period of ~680 years at a rate of ~74 m/yr. This ~50 km section of seafloor is devoid of any morainic ridges, suggesting that grounding zone retreat back to the mid-shelf and the position of the GLGZW was probably continuous and uninterrupted by stillstands or readvances (Dowdeswell et al., 2008). Comparable retreat rates are recorded for modern marine-terminating outlet glaciers on the Antarctic Peninsula (Cook et al., 2005) and similar episodic retreat has been proposed for other areas of the western BIIS marine margin (Bradwell et al., 2008; Ó Cofaigh et al., 2010).

The arcuate shape of the GLGZW closely mimics the orientation of the 200-m isobath (Fig. 2a), suggesting that grounding zone stabilization was controlled largely by bathymetry (cf. Ship et al., 1999). Thus, the GLGZW likely records a period of BIIS reconfiguration and stabilization along the shallower, mid continental shelf. This reconfiguration likely resulted from increased ice buoyancy on the outer shelf (i.e. areas of modern depths >200 m, Fig. 2a), either from sea level rise (Eyles and McCabe, 1989, McCabe et al., 2005) or ice thinning caused by AMOC variations (Clark et al., 2012b). The composite shape of the GLGZW, with at least two distinct flattopped ridges (Fig. 3ii, iii), most likely records minor oscillations of the grounding zone. Specifically, the westernmost flattopped ridge likely records a period of grounding-zone wedge deposition below a thicker ice shelf that created a smaller vertical accommodation space (Batchelor and Dowdeswell, 2015). Further evidence of a dynamic grounding zone is provided by glaciotectonised plumite deposits near the flanks of the GLGZW. That this glaciotectonism occurred without the formation of distinct ice-terminal landforms

indicates periods of minor readvance or recoupling along the grounding zone.

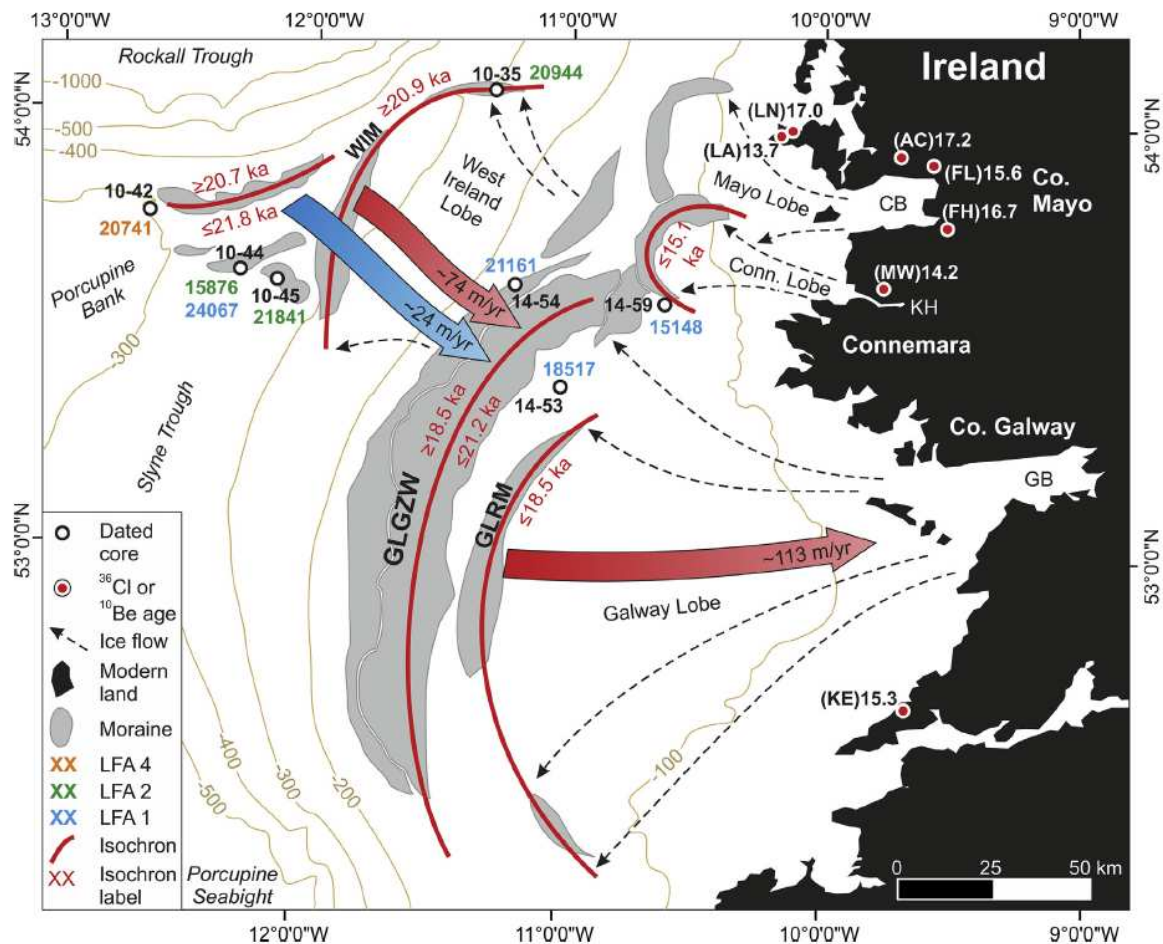


Fig. 7. Schematic map of study area showing isochrones derived from AMS radiocarbon data (Table 2) and analyses of geomorphology and stratigraphy that constrain the BIIS marine-terminating margin during retreat. AMS radiocarbon ages are displayed in coloured text that depicts the LFA that was sampled to provide the date; LFA 4 ¼ postglacial reworking, LFA 2 ¼ glaciomarine deposition, LFA 1 ¼ advance-phase till or glacitectorite. Cosmogenic ages referred to in the text are shown with ages and abbreviations introduced in Table 3. Flowlines are generalised and determined geomorphically. The labelled blue arrow illustrates ice shelf retreat at a rate of ~24 m/yr and the labelled red arrows illustrate grounding line retreat at ~74 m/yr west of the Galway Lobe Grounding-ZoneWedge (GLGZW) and ~113 m/yr east of the GLGZW. (For interpretation of the references to colour in this figure legend, the reader is referred to the web version of this article.)

Extensive iceberg scouring west of the GLGZW indicates that the ice shelf that flanked the western BIIS marine margin retreated via calving. This interpretation is consistent with geomorphic investigations on the shelf west of Donegal Bay, north of the study area (Fig. 1). There, extensive zones of iceberg scouring are interpreted to record rapid ice loss by calving following BIIS maximum extension to the shelf break (Benetti et al., 2010; Dunlop et al., 2010; O Cofaigh et al., 2010). A period of increased iceberg production following ice shelf formation is also evidenced by the massive clast-rich diamict commonly overlying till on the continental shelf (Fig. 6). Radiocarbon dates from the iceberg-rafted deposits in cores 10-35 on the WIM and 10-45 in the Slyne Trough restrict this

phase of calving retreat to (21,000 Cal BP (Table 2, Fig. 6), which is roughly coincident with post-Heinrich Event 2 peaks in BIIS-IRD production in cores from the Porcupine Seabight and Rockall Trough (Peck et al., 2006; Scourse et al., 2009). The ice shelf disintegrated, or at least its terminus retreated to a point on the continental shelf east of the GLGZW by 18,517 Cal BP, when foraminiferal tests were biomineralized in core 14-53 (Table 2). This allows an estimate for ice shelf duration of (2500 years and a minimum rate of ice shelf retreat over the ~60-km long expanse between the Slyne Trough and the GLGZW, to be calculated at ~24 m/yr. However, it is likely that this retreat was not steady state and that rapid sea-level rise occurring ~19,000 Cal BP (Clark et al., 2004) may have exacerbated the calving rate of this ice margin.

Grounding-zone wedges with similar dimensions to the GLGZW that occupy other glaciated continental shelves offshore of Antarctica and Norway (e.g. Shipp et al., 2002; Ottesen et al., 2005) are associated with stillstands during episodic ice retreat (Howat and Domack, 2003; Dowdeswell et al., 2008). Although no sediment flux rate can yet be calculated for the GLGZW, groundingzone wedges with comparable dimensions have typically been shown to record stillstands that lasted decades or centuries (Batchelor and Dowdeswell, 2015, and references therein). Thus, it is likely that the GLGZW formed along a grounding zone that was stable for a relatively long time while its vertical accretion was constrained by a large, buttressing ice shelf. It is evident that the stillstand marked by the GLGZW occurred after the deposition of till in the Slyne Trough dated to ~24,067 Cal BP (Peters et al., 2015; Table 2, Figs. 6 and 7) and prior to the formation of the nearby Galway Lobe Readvance Moraine <18,517 Cal BP (core 14-53, Table 2, Figs. 5-7). This ~5500 year period represents the maximum duration of grounding-zone proximal deposition along the GLGZW. However, it is more likely that the GLGZW was deposited over a period of <3300 years, defined by the age of ice-shelf inception over the Slyne Trough (21,841 Cal BP) and the age of foraminiferal tests within glaciectonised sediment to the east (18,517 Cal BP).

5.3. BIIS dynamics and chronology following ice shelf break up

A glaciectonised plumite in core 14-53 (Figs. 5 and 6) contains calcareous benthic foraminifera that provide an AMS radiocarbon date of 18,517 Cal BP (Table 2). The date provides a maximum age for the glaciectonisation. This date is approximately 2700 years older than previous estimates of the timing of deglaciation from surface exposure dating from the west coast of Ireland, which was calculated to ~15.85 ka BP from four cosmogenic ages (Table 3) (Bowen et al., 2002; Ballantyne et al., 2008). Collectively these dates constrain the formation of the Galway Lobe Readvance Moraine to a ~2700 year window from 18,400 Cal BP to >15.85 ka BP (Fig. 7). Radiocarbon ages on ice sheet readvance(s) in eastern Ireland during the Clogher Head Stadial (<18,200-17,100 Cal BP, McCabe et al., 2007; Clark et al., 2012b) and cosmogenic ages interpreted to constrain the age of readvances in western Ireland during the Killard Point Stadial (Table 3; 17.1-16.0 ka BP, Clark et al., 2012b) fall within the range of age constraints for this readvance on the Irish continental shelf (Fig. 7). This suggests that climactic forcing during those stadials may have influenced BIIS readvance(s) offshore of western Ireland; however, based on our existing chronology the role of internal glaciodynamic forcing mechanisms (e.g. changes in subglacial bed conditions) cannot be ruled out.

The duration of ice occupation at the Galway Lobe Readvance Moraine is unknown, but the mean post-LGM deglaciation age for the west coast of Ireland (~15.85 ka BP, Table 3) indicates that the BIIS retreated from this position across ~130 km of continental shelf to the shore of County Clare (Figs. 2a and 7) at a minimum rate of ~48 m/yr calculated assuming moraine formation at the time of age-constraining biomineralization (18,517 Cal BP). If the Galway Ice Lobe retreated following a Killard Point readvance at ~17,000 Cal BP, this would provide a retreat rate of ~113 m/yr.



Table 3 Referenced, cosmogenic nuclide ages from near the coast of counties Mayo, Galway and Clare, Ireland.

Age (ka)	Avg. age (ka)	Isotope	Location (abbreviation)	Elevation (m asl)	Interpretation	Reference (age)	Reference (interpretation)
14.5±0.9	13.7	¹⁰ Be	Lough Acorrymore (LA)	287	Nahanagan readvance age constraint	Ballantyne et al. (2008)	Ballantyne et al. (2008)
11.7±0.7	3	¹⁰ Be		190			
15.0±1.0		¹⁰ Be		198			
15.1±1.0	14.1	¹⁰ Be	Mweelrea (MW)	305	Post-LGM deglaciation age constraint	Ballantyne et al. (2008)	Ballantyne et al. (2008)
13.2±0.8	5	¹⁰ Be		650			
15.3±1.0		³⁶ Cl	Kilkee (KE)	66	Post-LGM deglaciation age constraint	Ballantyne et al. (2008)	Ballantyne et al. (2008)
15.7±1.0	15.6 ±0.4	¹⁰ Be	Furnace Lough (FL)	14.74	Killard Point readvance age constraint	Clark et al. (2009b)	Clark et al. (2009b)
15.2±1.0							
14.30±0.9							
17.03±1.0							
16.4±1.1							
16.1±0.7							
15.4±0.9							
14.1±0.7							
16.7±1.0		¹⁰ Be	Farnaght Hill (FH)	125	Post-LGM deglaciation age constraint	Ballantyne et al. (2008)	Ballantyne et al. (2008)
16.4±1.9	16.9	³⁶ Cl	Lough Nakeeroge (LN)	5	Killard Point readvance age constraint	Bowen et al. (2002)	Ballantyne et al. (2008)
17.5±3.7	5	³⁶ Cl		5			
17.1±1.1	17.1	¹⁰ Be	Anaffrin East Col (AC)	440	Post-LGM deglaciation age constraint	Ballantyne et al. (2008)	Ballantyne et al. (2008)
17.2±1.1	5	¹⁰ Be		440			

The general southward progression of the maximum extent of the three largest ice marginal features (WIM, GLGZW and Galway Lobe Readvance Moraine) indicates a possible increase in topographic constraint (likely from the Maumturk Mountains, Fig. 2a) on ice dynamics imposed on the thinning, retreat-phase BIIS (cf. Bradwell et al., 2008; Greenwood and Clark, 2009; Clark et al., 2012a). Unlike the three largest ice-terminal landforms in the study area, the Connemara Lobe and Mayo Lobe moraines have an arcuate shape that is unrelated to local bathymetry and suggestive of outflow from local, terrestrial source areas (Fig. 2a). These lobate moraines likely record the development of topographically restricted ice-flow outlets on the west of Ireland that developed following BIIS thinning (cf. Bradwell et al., 2008). The moraines are well preserved, truncate the GLGZW and are situated roughly within the radius of the WIM (Figs. 2a and 7), suggesting that these smaller moraines record BIIS readvances during overall retreat. These readvances identify the evolution of deglacial ice drainage regimes west of Ireland (cf. Greenwood and Clark, 2008). The Connemara Lobe Moraine is at least partially composed of soft, probably dilatant, subglacial till overlain in areas by glaciotectionised glaciomarine sediment (cores 10-40 and 14-59; Fig. 6). The dilatant till suggests periods of accelerated ice flow or ice streaming over bed material with high pore water pressures (O

Cofaigh and Evans, 2001; Ó Cofaigh et al., 2007). The till sampled in core 14-59 incorporates calcareous marine biogenic material that provides an age for the deposition of the top 4 m of the Connemara Lobe Moraine of $\sim 15,148$ Cal BP (Table 2; Fig. 7). This suggests that the Connemara Lobe advanced to this point on the continental shelf by $\sim 15,000$ Cal BP. Alternatively, the moderately stiff (~ 40 kPa) diamicton at the base of core 14-59 could have been formed by iceberg turbation or debris flows; however the high density, low water content and folding of this deposit (Fig. 5) are more compatible with an interpretation of subglacial till. This indicates that the western BIIS had a marine margin 1000 years after the Killard Point Stadial. We suggest that internal (glaciodynamic) forcing mechanism(s) are most likely to have triggered this readvance. However, we cannot rule out the possibility that readvance was climatically driven and associated with the Nahanagan Stadial (Younger Dryas) although this would imply significantly more extensive glacier growth during this period in western Ireland than has hitherto been proposed.

Although no direct age constraints are available for the Mayo Lobe Moraine, it was likely deposited after the formation of the GLGZW at 21,841-18,517 Cal BP. An estimated age of deposition of $< 21,000$ Cal BP for the Mayo Lobe Moraine is ~ 5400 years older than the cosmogenic ages that define the Killard Point Readvance at Furnace Lough (Clark et al., 2009b; Table 3). Thus, the Mayo Lobe Moraine is interpreted as pre-dating the Killard Point Stadial.

The readvances identified here on the basis of the core sedimentology and associated geochronology post-date break-up of the ice-shelf farther offshore in the Slyne Trough (Peters et al., 2015, Fig. 7). This suggests that the loss of the buttressing, floating ice mass could have initiated a period of accelerated westward flow similar to that which has been observed for ice sheet outlets around the Antarctic Peninsula (cf. Scambos et al., 2004).

6. Conclusions

- The ~ 80 -km long, arcuate West Ireland Moraine reaches to within 20 km of the shelf break west of Ireland and records the minimum westward, grounded extension of the BIIS $\sim 24,067$ Cal BP. This moraine is constructed, at least in part, from subglacial till and is capped by glaciomarine sediment that was deposited ~ 2100 Cal BP. This age constraint supports an interpretation of corrugation genesis from the periodic grounding of an overriding ice shelf that extended over the Slyne Trough.
- Overconsolidated subglacial till common at the base of the stratigraphic sequence across the continental shelf indicates that the BIIS advanced to its maximum offshore position without streaming or surging. However, after the initiation of retreat across the continental shelf west of Ireland ($\sim 21,841$ Cal BP), the BIIS likely experienced accelerated flow over a dilatant till with increased pore water pressures. These periods of accelerated flow formed readvance moraines.
- An ice shelf formed over the Slyne Trough and extended over the West Ireland Moraine following the advance of grounded ice $\sim 24,067$ Cal BP. AMS radiocarbon dated sub-ice shelf deposits indicate that this ice shelf formed $\sim 21,841$ Cal BP over the Slyne Trough and within ~ 800 years of the Greenland Interstadial 2 warming event ($\sim 21,000$ BP), suggesting that the westernmost BIIS may have uncoupled and formed a floating ice shelf after thinning that was induced by variations in the Atlantic Meridional Overturning Circulation. Two AMS radiocarbon dates from ice-proximal, IRD-rich glaciomarine sediment constrain the calving-dominated, eastward retreat of this ice shelf to have begun by approximately $< 21,000$ Cal BP.



- The BIIS grounding zone retreated during a single event, without forming moraines or grounding-zone wedges, across ~50 km of seafloor. This retreat likely took place over a period of ~680 years at a rate of ~74 m/yr. The grounding zone stabilised near and parallel to the 200-m isobath, suggesting a bathymetric control on its retreat.
- The bathymetrically-controlled grounding zone most likely persisted in roughly the same location for a maximum of <3300 years. Whilst in this position, the flanking ice shelf buttressed ice flow and added to the stability of the retreat stillstand. During this stillstand, subglacial sediment delivery along the grounding zone resulted in the formation of a large (~150-km long, up to 22-km wide, and up to 20-m thick) groundingzone wedge. This grounding-zone wedge is termed the Galway Lobe grounding-zone wedge (GLGZW) because it is interpreted to have formed against ice draining from Galway Bay, Ireland (the Galway Lobe).
- During the stillstand that formed the GLGZW, the position of the grounding zone on the shelf was relatively stable, but several minor fluctuations in ice dynamics formed the GLGZW as a composite landform. Glaciotectonised glaciomarine deposits are common on the flanks of the GLGZW, and record periods of local ice recoupling or readvance, one of which is dated to 21,161 Cal BP. Retreat from the GLGZW was complete by <18,517 Cal BP.
- BIIS marine margin retreat was characterised by a topographically-driven modification of ice flow dynamics probably associated with overall ice sheet thinning. This increased topographic influence on the retreating BIIS is evidenced by migrating positions of moraines and a general eastwards decrease in moraine size. These landform characteristics record the increasingly lobate structure of the BIIS during retreat, which is likely the signature of ice sheet thinning.
- The Galway Lobe Readvance Moraine was formed following grounding zone retreat <18,517 Cal BP. Although no direct age constraints are available, the smaller Mayo Lobe Moraine was likely deposited after the formation of the Galway Lobe Readvance Moraine and is at least younger than the 21,841-18,517 Cal BP GLGZW. The Connemara Lobe morainewas formed by an ice lobe that advanced onto the continental shelf after the formation of the GLGZW, likely <15,148 Cal BP and truncated surrounding morainic landforms. This indicates that the ice sheet underwent readvances on the shelf during deglaciation although our existing chronology does not yet allow us to determine conclusively if these readvances were glaciologically (internally) driven or a response to climatic forcing.
- Estimated rates of BIIS retreat vary drastically. Following ice shelf formation over the Slyne Trough, the BIIS's grounding zone retreated at a rate of ~74 km/yr before stabilizing and depositing the GLGZW. The ice shelf terminus retreated from the Porcupine Bank to the GLGZW at a minimum rate of ~24 m/yr before the grounding zone withdrew from the stillstand marked by the GLGZW. Following GLGZW deposition, BIIS marine margin retreat was punctuated by at least one readvance. During this continued retreat the marine-terminating ice sheet comprised of several discreet lobes, the largest of which formed the Galway Lobe Readvance Moraine prior to retreating ~130 km to the west coast of Ireland at a likely rate of ~113 m/yr. This highlights a drastic increase in marine margin retreat following the loss of the ~50-km wide ice shelf.

Acknowledgements

JLP acknowledges a University of Ulster PhD studentship and Vice-Chancellor's Scholarship from 2013 to 2016. This work was supported by the NERC Radiocarbon Facility NRCF010001 (allocation number 1722.0613), NERC consortium grant NE/J009768/1, for radiocarbon dating. Further



radiocarbon dating support was provided by the International Association of Sedimentologists (Postgraduate Research Grant, 1st session, 2014) and the Raidi_ó Teilifís _Eireann (RTE) broadcasting company for the television programme 'The Investigators'. Thanks to Derek Fabel at the Scottish Universities Environmental Research Centre, University of Glasgow, for his help during radiocarbon calibrations. Grateful thanks to Christian Wilson of Ocean DTM for Olex data-acquisition support, Robin Edwards at Trinity College, Dublin for the use of his MALVERN Mastersizer© for grain size analyses and sample processing, and Stephen McCarron at the National University of Ireland, Maynooth for the use of the GEOTEK multi-sensor core logger. We would like to thank the Captain and Crew of the RV Celtic Explorer, cruise participants and Mr _Aodhan Fitzgerald of the Marine Institute, for their invaluable assistance during cruises CE10008 and CE14004 (WICPro). The research surveys were carried out under the Sea Change strategy with the support of the Marine Institute and the Marine Research Sub-programme of the National Development Plan 2007-2013. The authors also thank two anonymous reviewers, whose insightful comments have helped to improve this manuscript.

References

- Amorosi, A., Colalongo, M., Pasini, G., Preti, D., 1999. Sedimentary response to Late Quaternary sea-level changes in the Romagna coastal plain (northern Italy). *Sedimentology* 46 (1), 99-121.
- Andreassen, K., Winsborrow, M.C., Bjarnad_ottir, L.R., R_üther, D.C., 2014. Ice stream retreat dynamics inferred from an assemblage of landforms in the northern Barents Sea. *Quat. Sci. Rev.* 92, 246-257.
- Ballantyne, C.K., Stone, J.O., McCarroll, D., 2008. Dimensions and chronology of the last ice sheet in western Ireland. *Quat. Sci. Rev.* 27 (3-4), 185-200.
- Barrie, J.V., Conway, K.W., 2002. Rapid sea-level change and coastal evolution on the Pacific margin of Canada. *Sediment. Geol.* 150 (1), 171-183.
- Batchelor, C., Dowdeswell, J., 2015. Ice-sheet grounding-zone wedges (GZWs) on high-latitude continental margins. *Mar. Geol.* 363, 65-92.
- Belderson, R.H., Kenyon, N.H., Wilson, J.B., 1973. Iceberg plough marks in the northeast Atlantic. *Palaeogeogr. Palaeoclimatol. Palaeoecol.* 13, 215-224.
- Benetti, S., Dunlop, P., _O Cofaigh, C., 2010. Glacial and glacially-related features on the continental margin of northwest Ireland mapped from marine geophysical data. *J. Maps* 6 (1), 14-29.
- Benn, D.I., Evans, D.J., 1996. The interpretation and classification of subglacially deformed materials. *Quat. Sci. Rev.* 15 (1), 23-52.
- Bennett, M.M., Glasser, N.F., 2011. *Glacial Geology: Ice Sheets and Landforms*. John Wiley & Sons.
- Bentley, M., Evans, D., Fogwill, C., Hansom, J., Sugden, D., Kubik, P., 2007. Glacial geomorphology and chronology of deglaciation, South Georgia, sub-Antarctic. *Quat. Sci. Rev.* 26 (5), 644-677.
- Bentley, M.J., Fogwill, C.J., Le Brocq, A.M., Hubbard, A.L., Sugden, D.E., Dunai, T.J., Freeman, S.P., 2010. Deglacial history of the west Antarctic ice sheet in the Weddell Sea embayment: constraints on past ice volume change. *Geology* 38 (5), 411-414.



Bishop, P., Jones, E.J.W., 1979. Patterns of Glacial and Post-Glacial Sedimentation in the Minches, North-west Scotland. In: Elsevier Oceanography Series, vol. 24, pp. 89-194.

Björck, S., Walker, M.J., Cwynar, L.C., Johnsen, S., Knudsen, K.L., Lowe, J.J., Wohlfarth, B., 1998. An event stratigraphy for the Last Termination in the North Atlantic region based on the Greenland ice-core record: a proposal by the INTIMATE group. *J. Quat. Sci.* 13 (4), 283-292.

Bond, G.C., Showers, W., Elliot, M., Evans, M., Lotti, R., Hajdas, I., Bonani, G., Johnson, S., 1999. The North Atlantic's 1-2 Kyr Climate Rhythm: Relation to Heinrich Events, Dansgaard/Oeschger Cycles and the Little Ice Age. In: *Mechanisms of Global Climate Change at Millennial Time Scales*, pp. 35-58.

Boulton, G.S., 1986. Push-moraines and glacier-contact fans in marine and terrestrial environments. *Sedimentology* 33, 677-698.

Bowen, D.Q., Rose, J., McCabe, A.M., Sutherland, D.G., 1986. Correlation of quaternary glaciations in England, Ireland, Scotland and Wales. *Quat. Sci. Rev.* 5, 299-340.

Bowen, D.Q., Phillips, F.M., McCabe, A.M., Knutz, P.C., Sykes, G.A., 2002. New data for the last glacial maximum in Great Britain and Ireland. *Quat. Sci. Rev.* 21, 89-101.

Bradwell, T., Stoker, M.S., Golledge, N.R., Wilson, C.K., Merritt, J.W., Long, D., Everest, J.D., Hestvik, O.B., Stevenson, A.G., Hubbard, A.L., Finlayson, A.G., Mathers, H.E., 2008. The northern sector of the last British ice sheet: maximum extent and demise. *Earth Sci. Rev.* 88 (3), 207-226.

Broecker, W.S., Kennett, J.P., Flower, B.P., Teller, J.T., Trumbore, S., Bonani, G., Wolfli, W., 1989. The routing of Laurentide ice-sheet meltwater during the younger dryas cold event. *Nature* 341, 318-321.

Chang, T.S., Flemming, B.W., Tilch, E., Bartholomä, A., Wöostmann, R., 2006. Late Holocene stratigraphic evolution of a back-barrier tidal basin in the East Frisian Wadden Sea, southern North Sea: transgressive deposition and its preservation potential. *Facies* 52 (3), 329-340.

Clark, P.U., McCabe, A.M., Mix, A.C., Weaver, A.J., 2004. Rapid sea level rise at 19,000 years ago and its global implications. *Science* 304, 1141-1144.

Clark, J., McCABE, A., Schnabel, C., Clark, P.U., Freeman, S., Maden, C., Xu, S., 2009a. ¹⁰Be chronology of the last deglaciation of County Donegal, northwestern Ireland. *Boreas* 38 (1), 111-118.

Clark, J., McCabe, A.M., Schnabel, C., Clark, P.U., McCarron, S., Freeman, S.P.H.T., Maden, C., Xu, S., 2009b. Cosmogenic Be-10 chronology of the last deglaciation of western Ireland, and implications for sensitivity of the Irish Ice Sheet to climate change. *Geol. Soc. Am. Bull.* 121 (1-2), 3-16.

Clark, C.D., Hughes, A.L.C., Greenwood, S.L., Jordan, C., Sejrup, H.P., 2012a. Pattern and timing of retreat of the last British-Irish ice sheet. *Quat. Sci. Rev.* 44, 112-146.

Clark, J., McCabe, A.M., Bowen, D.Q., Clark, P.U., 2012b. Response of the Irish ice sheet to abrupt climate change during the last deglaciation. *Quat. Sci. Rev.* 35, 100-115.



- Cook, A., Fox, A., Vaughan, D., Ferrigno, J., 2005. Retreating glacier fronts on the Antarctic Peninsula over the past half-century. *Science* 308 (5721), 541-544.
- Cowan, E.A., Cai, J., Powell, R.D., Clark, J.D., Pitcher, J.N., 1997. Temperate glacial marine varves: an example from Disenchantment Bay, southern Alaska. *J. Sediment. Res.* 67 (3).
- Dansgaard, W., Johnsen, S.J., Clausen, H.B., Dahl-Jensen, D., Gundestrup, N.S., Hammer, C.U., Hvidberg, C.S., Steffensen, J.P., Svelinbjörnisdóttir, A.E., Jouzel, J., Bond, G., 1993. Evidence for general instability of past climate from a 250-kyr ice-core record. *Nature* 364 (6434), 218-220.
- Dowdeswell, J.A., Villinger, H., Whittington, R.J., Marienfeld, P., 1993. Iceberg scouring in Scoresby Sund and on the east Greenland continental shelf. *Mar. Geol.* 111, 37-53.
- Dowdeswell, J.A., Whittington, R.J., Marienfeld, P., 1994. The origin of massive diamicton facies by iceberg rafting and scouring, Scoresby Sund, East Greenland. *Sedimentology* 41 (1), 21-35.
- Dowdeswell, J., Maslin, M., Andrews, J., McCave, I., 1995. Iceberg production, debris rafting, and the extent and thickness of Heinrich layers (H-1, H-2) in North Atlantic sediments. *Geology* 23 (4), 301-304.
- Dowdeswell, J., Whittington, R., Jennings, A., Andrews, J., Mackensen, A., Marienfeld, P., 2000. An origin for laminated glacial marine sediments through sea-ice build-up and suppressed iceberg rafting. *Sedimentology* 47, 557-576.
- Dowdeswell, J., Ó Cofaigh, C., Pudsey, C., 2004. Continental slope morphology and sedimentary processes at the mouth of an Antarctic palaeo-ice stream. *Mar. Geol.* 204 (1), 203-214.
- Dowdeswell, J., Ottesen, D., Evans, J., Ó Cofaigh, C., Anderson, J., 2008. Submarine glacial landforms and rates of ice-stream collapse. *Geology* 36 (10), 819-822.
- Dunlop, P., Shannon, R., McCabe, M., Quinn, R., Doyle, E., 2010. Marine geophysical evidence for ice sheet extension and recession on the Malin shelf: new evidence for the western limits of the British Irish ice sheet. *Mar. Geol.* 276 (1), 86-99.
- Evans, J., Pudsey, C.J., Ó Cofaigh, C., Morris, P., Domack, E., 2005. Late Quaternary glacial history, flow dynamics and sedimentation along the eastern margin of the Antarctic Peninsula ice sheet. *Quat. Sci. Rev.* 24, 741-774.
- Evans, D.J.A., Phillips, E.R., Hiemstra, J.F., Auton, C.A., 2006a. Subglacial till: formation, sedimentary characteristics and classification. *Earth Sci. Rev.* 78 (1), 115-176.
- Evans, J., Dowdeswell, J.A., Ó Cofaigh, C., Benham, T.J., Anderson, J.B., 2006b. Extent and dynamics of the West Antarctic ice sheet on the outer continental shelf of Pine Island Bay during the last glaciation. *Mar. Geol.* 230 (1), 53-72.
- Eyles, C.H., 1988. A model for striated boulder pavement formation on glaciated, shallow-marine shelves: an example from the Yakataga Formation, Alaska. *J. Sediment. Res.* 58 (1), 62-71.
- Eyles, N., McCabe, A.M., 1989. The Late Devensian (< 22,000 BP) Irish Sea Basin: the sedimentary record of a collapsed ice sheet margin. *Quat. Sci. Rev.* 8 (4), 307-351.

Eyles, N., Eyles, C.H., Miall, A.D., 1983. Lithofacies types and vertical profile models; an alternative approach to the description and environmental interpretation of glacial diamict and diamictite sequences. *Sedimentology* 30 (3), 393-410.

Feyling-Hanssen, R.W., 1972. The foraminifer *Elphidium excavatum* (Terquem) and its variant forms. *Micropaleontology* 18 (3), 337-354.

Fischer, U., Clarke, G.K.C., Blatter, H., 1999. Evidence for temporally varying “sticky spots” at the base of Trapridge Glacier, Yukon Territory, Canada. *J. Glaciol.* 45, 352-360.

Flemming, B., Schubert, H., Hertweck, G., Müller, K., 1992. Bioclastic tidal-channel lag deposits: a genetic model. *Senckenberg. Marit.* 22, 109-129.

Fyfe, J.A., Long, D., Evans, D., 1993. The Geology of the Malin-hebrides Sea Area. British Geological Survey, United Kingdom. Offshore Regional Report. HMSO, London.

Glasser, N.F., Scambos, T.A., Bohlander, J., Truffer, M., Pettit, E., Davies, B.J., 2011. From ice-shelf tributary to tidewater glacier: continued rapid recession, acceleration and thinning of R€ohss Glacier following the 1995 collapse of the Prince Gustav ice shelf, Antarctic Peninsula. *J. Glaciol.* 57 (203), 397-406.

Greenwood, S.L., Clark, C.D., 2008. Subglacial bedforms of the Irish ice sheet. *J. Maps* 4 (1), 332-357.

Greenwood, S.L., Clark, C.D., 2009. Reconstructing the last Irish ice sheet 2: a geomorphologically-driven model of ice sheet growth, retreat and dynamics. *Quat. Sci. Rev.* 28 (27-28), 3101-3123.

Grobe, H., 1987. A simple method for the determination of ice-rafted debris in sediment cores. *Polarforschung* 57 (3), 123-126.

Hald, M., Korsun, S., 1997. Distribution of modern benthic foraminifera from fjords of Svalbard, European Arctic. *J. Foraminifer. Res.* 27 (2), 101-122.

Hald, M., Steinsund, P.I., Dokken, T., Korsun, S., Polyak, L., Aspeli, R., 1994. Recent and late Quaternary distribution of *Elphidium excavatum* f. *clavata* in Arctic seas. *Cushman Found. Spec. Publ.* 32, 141-153.

Hill, J.C., Gayes, P.T., Driscoll, N.W., Johnstone, E.A., Sedberry, G.R., 2008. Iceberg scours along the southern US Atlantic margin. *Geology* 36 (6), 447-450.

Hillenbrand, C.D., Baesler, A., Grobe, H., 2005. The sedimentary record of the last glaciation in the western Bellingshausen Sea (West Antarctica): implications for the interpretation of diamictites in a polar-marine setting. *Mar. Geol.* 216 (4),

191-204.

Hillenbrand, C.D., Larter, R.D., Dowdeswell, J.A., Ehrmann, W., O Cofaigh, C., Benetti, S., Grobe, H., 2010. The sedimentary legacy of a palaeo-ice stream on the shelf of the southern Bellingshausen Sea: clues to west Antarctic glacial history during the Late Quaternary. *Quat. Sci. Rev.* 29 (19), 2741-2763.



Hillenbrand, C.-D., Kuhn, G., Smith, J.A., Gohl, K., Graham, A.G., Larter, R.D., Klages, J.P., Downey, R., Moreton, S.G., Forwick, M., Vaughan, D.G., 2013. Grounding-line retreat of the west Antarctic ice sheet from inner Pine Island Bay. *Geology* 41 (1), 35-38.

Howat, I.M., Domack, E.W., 2003. Reconstructions of western Ross Sea palaeo-icestream grounding zones from high-resolution acoustic stratigraphy. *Boreas* 32 (1), 56-75.

Jakobsson, M., Anderson, J.B., Nitsche, F.O., Dowdeswell, J.A., Gyllencreutz, R., Kirchner, N., Mohammad, R., O'Regan, M., Alley, R.B., Anandakrishnan, S., Eriksson, B., Kirshner, A., Fernandez, R., Stollendorf, T., Minzoni, R., Majewski, W., 2011. Geological record of ice shelf break-up and grounding line retreat, Pine Island Bay, West Antarctica. *Geology* 39 (7), 691-694.

Jónsson, S.A., Schomacker, A., Benediktsson, I.Ó., Ingólfsson, Ó., Johnson, M.D., 2014. The drumlin field and the geomorphology of the Múlafjökull surge-type glacier, central Iceland. *Geomorphology* 207, 213-220.

Kilfeather, A.A., Ó Cofaigh, C., Lloyd, J.M., Dowdeswell, J.A., Xu, S., Moreton, S.G., 2011. Ice-stream retreat and ice-shelf history in Marguerite Trough, Antarctic Peninsula: sedimentological and foraminiferal signatures. *Geol. Soc. Am. Bull.* 123 (5-6), 997-1015.

Lecavalier, B.S., Milne, G.A., Simpson, M.J., Wake, L., Huybrechts, P., Tarasov, L., Kjeldsen, K.K., Funder, S., Long, A.J., Woodroffe, S., Dyke, A.S., 2014. A model of Greenland ice sheet deglaciation constrained by observations of relative sea level and ice extent. *Quat. Sci. Rev.* 102, 54-84.

Lian, O.B., Hicock, S.R., 2000. Thermal conditions beneath parts of the last Cordilleran ice sheet near its centre as inferred from subglacial till, associated sediments, and bedrock. *Quat. Int.* 68, 147-162.

Løwemark, L., Chao, W.S., Gyllencreutz, R., Hanebuth, T.J., Chiu, P.Y., Yang, T.N., Su, C.C., Chuang, C.K., Dominguez, D.C.L., Jakobsson, M., 2015. Variations in glacial and interglacial marine conditions over the last two glacial cycles off northern Greenland. *Quat. Sci. Rev.* (in press), ISSN: 0277-3791.

Lucchi, R., Camerlenghi, A., Rebesco, M., Colmenero-Hidalgo, E., Sierro, F., Sagnotti, L., Urgeles, R., Melis, R., Morigi, C., Barcena, M.-A., Giorgetti, G., Villa, G., Persico, D., Flores, J.-A., Rigual-Hernandez, A.S., Pedrosa, M.T., Macri, P., Caburlotto, A., 2013. Postglacial sedimentary processes on the Storfjorden and Kveithola trough mouth fans: significance of extreme glacial marine sedimentation. *Glob. Planet. Change* 111, 309-326.

McCabe, A.M., 1986. Glaciomarine facies deposited by retreating tidewater glaciers: an example from the Late Pleistocene of Northern Ireland. *J. Sediment. Res.* 56 (6).

McCabe, A.M., Clark, P.U., 1998. Ice-sheet variability around the North Atlantic Ocean during the last deglaciation. *Nature* 392 (6674), 373-377.

McCabe, A., Clark, P.U., 2003. Deglacial chronology from county Donegal, Ireland: implications for deglaciation of the British-Irish ice sheet. *J. Geol. Soc.* 160 (6), 847-855.

McCabe, M., Knight, J., McCarron, S., 1998. Evidence for Heinrich event 1 in the British Isles. *J. Quat. Sci.* 13 (6), 549-568.



McCabe, A., Clark, P., Clark, J., 2005. AMS C-14 dating of deglacial events in the Irish Sea Basin and other sectors of the British-Irish ice sheet. *Quat. Sci. Rev.* 24 (14), 1673-1690.

McCabe, A.M., Clark, P.U., Clark, J., 2007. Radiocarbon constraints on the history of the western Irish ice sheet prior to the Last Glacial maximum. *Geology* 35 (2), 147-150.

Melis, R., Salvi, G., 2009. Late Quaternary foraminiferal assemblages from western Ross Sea (Antarctica) in relation to the main glacial and marine Lithofacies. *Mar. Micropaleontol.* 70 (1-2), 39-53.

Mudie, P.J., Keen, C.E., Hardy, I.A., Vis, G., 1984. Multivariate analysis and quantitative paleoecology of benthic foraminifera in surface and Late Quaternary shelf sediments, northern Canada. *Micropaleontology* 8, 283-313.

_O Cofaigh, C., Dowdeswell, J.A., 2001. Laminated sediments in glacial-marine environments: diagnostic criteria for their interpretation. *Quat. Sci. Rev.* 20 (13), 1411-1436.

_O Cofaigh, C., Evans, D.J., 2001. Deforming bed conditions associated with a major ice stream of the last British ice sheet. *Geology* 29 (9), 795-798.

_O Cofaigh, C., Evans, D.J., 2007. Radiocarbon constraints on the age of the maximum advance of the British-Irish ice sheet in the Celtic Sea. *Quat. Sci. Rev.* 26 (9), 1197-1203.

_O Cofaigh, C., Taylor, J., Dowdeswell, J.A., Rosell-Mel_e, A., Kenyon, N.H., Evans, J., Mienert, J., 2002. Geological evidence for sediment reworking on high-latitude continental margins and its implications for palaeoceanography: insights from the Norwegian-Greenland Sea. In: Dowdeswell, J.A., O'CoFaigh, C. (Eds.), *Glacier-influenced Sedimentation on High-latitude Continental Margins*, vol. 203. Geological Society of London, Special Publication, pp. 325-348.

_O Cofaigh, C., Dowdeswell, J.A., Allen, C.S., Hiemstra, J.F., Pudsey, C.J., Evans, J., Evans, D.J.A., 2005. Flow dynamics and till genesis associated with a marine-based Antarctic palaeo-ice stream. *Quat. Sci. Rev.* 24, 709-740.

_O Cofaigh, C., Evans, J., Dowdeswell, J.A., Larter, R.D., 2007. Till characteristics, genesis and transport beneath Antarctic paleo-ice streams. *J. Geophys. Res. Earth Surf.* 112 (F3).

_O Cofaigh, C., Dunlop, P., Benetti, S., 2010. Marine geophysical evidence for Late Pleistocene ice sheet extent and recession off northwest Ireland. *Quat. Sci. Rev.* 44, 147-159.

_O Cofaigh, C., Evans, D.J.A., Hiemstra, J.F., 2011. Formation of a stratified subglacial 'till' assemblage by ice-marginal thrusting and glacier overriding. *Boreas* 40 (1), 1-14.

_O Cofaigh, C., Telfer, M.W., Bailey, R.M., Evans, D.J., 2012. Late Pleistocene chronostratigraphy and ice sheet limits, southern Ireland. *Quat. Sci. Rev.* 44, 160-179.

Ottesen, D., Rise, L., Knies, J., Olsen, L., Henriksen, S., 2005. The Vestfjorden-Trænadjupet palaeo-ice stream drainage system, mid-Norwegian continental shelf. *Mar. Geol.* 218 (1), 175-189.

Peck, V., Hall, I., Zahn, R., Elderfield, H., Grousset, F., Hemming, S., Scourse, J., 2006. High resolution evidence for linkages between NW European ice sheet instability and Atlantic meridional overturning circulation. *Earth Planet. Sci. Lett.* 243 (3), 476-488.



Peters, J.L., Benetti, S., Dunlop, P., O Cofaigh, C., 2015. Maximum extent and dynamic behaviour of the last British-Irish ice sheet west of Ireland. *Quat. Sci. Rev.* 128, 48-68.

Polyak, L., Gataullin, V., Gainanov, V., Gladyshev, V., Goremykin, Yu, 2002. Kara Sea expedition yields insight into LGM ice sheet extent. *Eos* 83 (46), 525-529.

Praeg, D., McCarron, S., Dove, D., O Cofaigh, C., Scott, G., Monteys, X., Facchin, L., Romeo, R., Coxon, P., 2015. Ice sheet extension to the Celtic Sea shelf edge at the last glacial maximum. *Quat. Sci. Rev.* 111, 107-112.

Reimer, P.J., Bard, E., Bayliss, A., Beck, J.W., Blackwell, P.G., Ramsey, C.B., Buck, C.E., Hai, C., Edwards, R.L., Friedrich, M., Grootes, P.M., Guilderson, T.P., Haflidason, H., Hajdas, I., Hatt_e, C., Heaton, T.J., Hoffmann, D.L., Hogg, A.G., Hughen, K.A., Kaiser, K.F., Kromer, B., Manning, S.W., Niu, M., Reimer, R.W., Richards, D.A., Scott, E.M., Southon, J.R., Staff, R.A., Turney, C.S.M., van der Plicht, J., 2013. IntCal13 and Marine13 radiocarbon age calibration curves 0-50,000 years cal BP. *Radiocarbon* 55 (4), 1869-1887.

Rignot, E., Koppes, M., Velicogna, I., 2010. Rapid submarine melting of the calving faces of West Greenland glaciers. *Nat. Geosci.* 3 (3), 187-191.

Rijsdijk, K.F., Owen, G., Warren, W.P., McCarroll, D., van der Meer, J.J., 1999. Clastic dykes in over-consolidated tills: evidence for subglacial hydrofracturing at Killiney Bay, eastern Ireland. *Sediment. Geol.* 129 (1), 111-126.

Robinson, S.G., Maslin, M.A., McCave, I.N., 1995. Magnetic susceptibility variations in late Pleistocene deep-sea sediments of the N.E. Atlantic: implications for ice rafting and paleocirculation at the last glacial maximum. *Paleoceanography* 10, 221-250.

Robinson, A., Calov, R., Ganopolski, A., 2011. Greenland ice sheet model parameters constrained using simulations of the Eemian interglacial. *Clim. Past* 7 (2), 381-396.

Saito, Y., Katayama, H., Ikehara, K., Kato, Y., Matsumoto, E., Oguri, K., Oda, M., Yumoto, M., 1998. Transgressive and highstand systems tracts and post-glacial transgression, the East China Sea. *Sediment. Geol.* 122 (1), 217-232.

Scambos, T.A., Bohlander, J.A., Shuman, C.U., Skvarca, P., 2004. Glacier acceleration and thinning after ice shelf collapse in the Larsen B embayment, Antarctica. *Geophys. Res. Lett.* 31 (18), 1-4.

Scourse, J.D., Austin, W.E.N., Bateman, R.M., Catt, J.A., Evans, C.D.R., Robinson, J.E., Young, J.R., 1990. *Sedimentology and Micropalaeontology of Glacimarine Sediments from the Central and Southwestern Celtic Sea*, vol. 53(1). Geological Society, London, pp. 329-347. Special Publications.

Scourse, J.D., Haapaniemi, A.I., Colmenero-Hidalgo, E., Peck, V.L., Hall, I.R., Austin, W.E., Knutz, P.C., Zahn, R., 2009. Growth, dynamics and deglaciation of the last British-Irish ice sheet: the deep-sea ice-rafted detritus record. *Quat. Sci. Rev.* 28 (27), 3066-3084.

Sejrup, H.P., Haflidason, H., Aarseth, I., King, E., Forsberg, C.F., Long, D., Rokoengen, K., 1994. Late Weichselian glaciation history of the northern North Sea. *Boreas* 23 (1), 1-13.



Sejrup, H.P., Hjelstuen, B.O., Dahlgren, K.I.T., Haflidason, H., Kuijpers, A., Nygård, A., Praeg, D., Stoker, M.S., Vorren, T.O., 2005. Pleistocene glacial history of the NW European continental margin. *Mar. Pet. Geol.* 22, 1111-1129.

Sharp, M., 1982. Modification of clasts in lodgement tills by glacial erosion. *J. Glaciol.* 28 (100), 475-481.

Shevenell, A.E., Domack, E.W., Kernan, G.M., 1996. Record of Holocene palaeoclimate change along the Antarctic Peninsula: evidence from glacial marine sediments, Lallemand Fjord. In: *Papers and Proceedings of the Royal Society of Tasmania*, vol. 130(2), pp. 55-64.

Ship, S., Anderson, J., Domack, E., 1999. Late Pleistocene-Holocene retreat of the West Antarctic ice-sheet system in the Ross Sea: part I: geophysical results. *Geol. Soc. Am. Bull.* 111 (10), 1486-1516.

Shipp, S.S., Wellner, J.S., Anderson, J.B., 2002. Retreat Signature of a Polar Ice Stream: Sub-glacial Geomorphic Features and Sediments from the Ross Sea, Antarctica, vol. 203. *Special Publication-Geological Society of London*, pp. 277-304.

Smeulders, G.G.B., Koho, K.A., de Stigter, H.C., Mienis, F., de Haas, H., van Weering, T.C.E., 2014. Cold-water coral habitats of Rockall and Porcupine Bank, NE Atlantic Ocean: sedimentary facies and benthic foraminiferal assemblages. In: *Deep Sea Research Part II: Topical Studies in Oceanography*, vol. 99, pp. 270-285.

Smith, J.A., Hillenbrand, C.D., Kuhn, G., Larter, R.D., Graham, A.G., Ehrmann, W., Moreton, S.G., Forwick, M., 2011. Deglacial history of the West Antarctic ice sheet in the western Amundsen Sea embayment. *Quat. Sci. Rev.* 30 (5), 488-505.

Stalder, C., Spezzaferri, S., Rüggeberg, A., Pirkenseer, C., Gennari, G., 2014. Late Weichselian deglaciation and early Holocene development of a cold-water coral reef along the Lophhavet shelf (northern Norway) recorded by benthic foraminifera and ostracoda. In: *Deep Sea Research Part II: Topical Studies in Oceanography*, vol. 99, pp. 249-269.

Stuiver, M., Reimer, P.J., 1993. Extended ¹⁴C database and revised CALIB radiocarbon calibration program. *Radiocarbon* 35, 215-230.

Sættem, J., Rise, L., Rokoengen, K., By, T., 1996. Soil investigations, offshore mid Norway: a case study of glacial influence on geotechnical properties. *Glob. Planet. Change* 12 (1), 271-285.

van der Meer, J.J., Kjaer, K.H., Krüger, J., 1999. Subglacial water-escape structures and till structures, slöttjökull, Iceland. *J. Quat. Sci.* 14 (3), 191-205.

van der Meer, J.J., Menzies, J., Rose, J., 2003. Subglacial till: the deforming glacier bed. *Quat. Sci. Rev.* 22 (15), 1659-1685.

Viana, A., Faugères, J.-C., Stow, D., 1998. Bottom-current-controlled sand deposits: a review of modern shallow-to deep-water environments. *Sediment. Geol.* 115 (1), 53-80.

Vorren, T.O., Hald, M., Edvardsemn, Lind-Hansen, O.W., 1983. Glacigenic sediments and sedimentary environments on continental shelves: general principles with a case study from the



Norwegian shelf. In: Ehlers, J. (Ed.), *Glacial Deposits in North- West Europe*. Balkema, Rotterdam, pp. 61-73.

Wellner, J., Lowe, A., Shipp, S., Anderson, J., 2001. Distribution of glacial geomorphic features on the Antarctic continental shelf and correlation with substrate: implications for ice behavior. *J. Glaciol.* 47 (158), 397-411.

