



This is a repository copy of *Genes controlling mimetic colour pattern variation in butterflies*.

White Rose Research Online URL for this paper:  
<http://eprints.whiterose.ac.uk/100438/>

Version: Accepted Version

---

**Article:**

Nadeau, N. [orcid.org/0000-0002-9319-921X](https://orcid.org/0000-0002-9319-921X) (2016) Genes controlling mimetic colour pattern variation in butterflies. *Current Opinion in Insect Science*, 17. pp. 24-31. ISSN 2214-5753

<https://doi.org/10.1016/j.cois.2016.05.013>

---

**Reuse**

Unless indicated otherwise, fulltext items are protected by copyright with all rights reserved. The copyright exception in section 29 of the Copyright, Designs and Patents Act 1988 allows the making of a single copy solely for the purpose of non-commercial research or private study within the limits of fair dealing. The publisher or other rights-holder may allow further reproduction and re-use of this version - refer to the White Rose Research Online record for this item. Where records identify the publisher as the copyright holder, users can verify any specific terms of use on the publisher's website.

**Takedown**

If you consider content in White Rose Research Online to be in breach of UK law, please notify us by emailing [eprints@whiterose.ac.uk](mailto:eprints@whiterose.ac.uk) including the URL of the record and the reason for the withdrawal request.



[eprints@whiterose.ac.uk](mailto:eprints@whiterose.ac.uk)  
<https://eprints.whiterose.ac.uk/>

## Genes controlling mimetic colour pattern variation in butterflies

Nicola J. Nadeau<sup>1</sup>

<sup>1</sup>Department of Animal and Plant Sciences, University of Sheffield, Western Bank, Sheffield, S10 2TN, UK, N.Nadeau@sheffield.ac.uk

### Abstract

Butterfly wing patterns are made up of arrays of coloured scales. There are two genera in which within-species variation in wing patterning is common and has been investigated at the molecular level, *Heliconius* and *Papilio*. Both of these species have mimetic relationships with other butterfly species that increase their protection from predators. *Heliconius* have a “tool-kit” of five genetic loci that control colour pattern, three of which have been identified at the gene level, and which have been repeatedly used to modify colour pattern by different species in the genus. In contrast, the three *Papilio* species that have been investigated each have different genetic mechanisms controlling their polymorphic wing patterns.

### Introduction

Butterfly wing patterns are examples of evolutionary innovation that have fascinated scientists since the very inception of evolutionary theory [1]. The adaptive significance of these patterns has been established in many cases, and the main function is usually for defence against predators, for example as startle patterns [2], camouflage, or warning colours in chemically defended species [3]. Warning colours are also often shared between species, either through Müllerian mimicry, where multiple chemically defended species have the same pattern, increasing predator learning of these patterns [4], or through Batesian mimicry, where non-defended species copy the patterns of chemically defended species [5]. Wing colours and patterns can also function in mate choice and mate attraction [6], sometimes alongside an anti-predator function [3]. This dual function can lead to interesting evolutionary dynamics, for example the ability to function as “magic traits” in speciation – causing both ecological divergence between populations with different patterns and reproductive barriers due to assortative mating [7].

Wing patterns in the butterflies and moths (Lepidoptera) are made up of arrays of coloured scales (Figure 1). These colours can be conferred either by pigments or by sub-micron-scale structures that produce interference colours (structural colour) or by a combination of these mechanisms [8]. While the genetic pathways responsible for pigment production are fairly well characterised in most cases, virtually nothing is known about genes controlling structural colour. The most common pigment is melanin and the pathways producing this pigment from the amino acid precursor tyrosine are well known in insects [9,10]. Other butterfly wing pigments include ommochromes, pterins and flavonoids. The first two are synthesised from precursors tryptophan and guanosine triphosphate respectively, but the latter must be obtained from food plants [8].

While the genetic control of pigment production is reasonably well understood, these genes appear to be fairly conserved in evolutionary terms and contribute relatively little to the variation in wing pigmentation pattern observed in butterflies [11,12] or moths [13], at least over short evolutionary

timescales. This contrasts with what is known in vertebrates [14–17] and to some extent also other insects [18,19], and suggests that on the lepidopteran wing there is a greater disconnect between the genes responsible for producing pigments and those responsible for the evolution of colour patterning.

There are two major butterfly groups in which genetic variation underlying pattern variation has been investigated, *Heliconius* and *Papilio* (Figure 2). Both of these show widespread within-species variation in wing pigmentation patterning related to mimicry. This variability has made them excellent systems for identifying genes controlling pattern variation.

### **The *Heliconius* “Tool Kit”**

As well as within-species variation in pigmentation patterning, the *Heliconius* butterflies have also been studied because of the often near-perfect mimicry between species. This mimicry has also made them an excellent system for studying the extent to which the same genes are used when evolving convergent traits [20]. Extensive genetic work on species within this genus (largely *H. erato*, *H. melpomene*, *H. cydno* and *H. numata*) has revealed a “tool kit” of around five unlinked genetic loci (Figure 2) that control almost all of the colour pattern variation in this group and that have been repeatedly used by different species to produce both convergent and divergent wing colour patterns [21–24]. Over the last few years several of these have been pinned down to individual genes.

#### *Optix*

Fine-scale mapping and gene expression analyses have identified the transcription factor *optix* as being responsible for turning on and off most red, orange and brown colour pattern elements in *H. erato*, *H. melpomene* and *H. cydno* (Figure 2) [25]. In *Drosophila* the main function of *optix* is in controlling eye development [26]. However, the gene apparently took on a role in wing scale specification within the lepidoptera, initially controlling the development of specialised scales coupling together the fore- and hind-wings, and just within *Heliconius* has it taken on a role in colour patterning [27].

Population genomics approaches have identified a 65kb interval ~100kb downstream of *optix* that likely contains cis-regulatory elements controlling red colour patterns in both *H. erato* and *H. melpomene* [28,29]. Detailed analysis of this region in *H. melpomene* has revealed two discrete regulatory modules, one 10kb in length containing variants that control red patches at the wing bases (“dennis” patches) and one 25kb in length controlling red “rays” on the hind-wing (Figure 3b) [30]. It seems likely that each of these modules contain one or more transcription factor binding sites that specify the expression pattern of *optix*. However, discovering exactly what the functional variants within these regions are will likely remain unresolved until transgenic techniques are developed in these species. It is also presumed that there is a third, currently unidentified, regulatory module for *optix*, which controls the presence of a red forewing band [22].

#### *Cortex*

A second major locus is responsible for switching on and off most white and yellow colour pattern elements in *H. erato*, *H. melpomene* and *H. cydno* (Figure 2) [21,23]. Interestingly this locus also overlaps with two inversions present in certain morphs of *H. numata*, which control quite different colour patterns of black, orange and yellow spots [31]. *H. numata* differs from most other *Heliconius*

species in that multiple colour patterns are usually present within a single population and that all colour pattern variation is controlled by multiple alleles at single genetic locus with a strict dominance hierarchy between these alleles [32]. The gene *cortex* appears to be, at least partially, responsible for these colour pattern variants, with population genomics approaches mapping colour pattern variation within *H. erato*, *H. melpomene* and *H. numata* to within or near this gene and *H. melpomene* and *H. numata* showing colour-pattern-associated expression differences of *cortex* [33].

*Cortex* belongs to a family of cell cycle regulators [34], which includes two genes that are highly conserved in all eukaryotes, *CDC20/fzy* and *cdh1/fzr*, and have a fundamental role in cell cycle progression [35]. *Cortex* itself appears to be insect specific and to have a much higher evolutionary rate [33]. It seems likely that it could control scale cell colour through control of scale developmental rate, as melanic scales are known to develop at a slower rate than scales of other colours across a diversity of lepidoptera [36]. Indeed, the *cortex* gene also appears to regulate melanic pigmentation in the peppered moth, with the insertion of a transposable element in this gene producing the melanic form that proliferated during the industrial revolution [37]. Therefore, it seems likely that *cortex* has a role in scale cell development and pigmentation across all lepidoptera.

Again, the precise functional variants of *cortex* causing differences in pigmentation patterning are unknown, but appear to be cis-regulatory rather than coding. *Cortex* has several 5' untranslated exons (5' UTRs) spanning a region of over 100kb, suggesting a complex of dispersed regulatory elements [33]. In addition to splicing variation of these 5' UTRs, there are also alternative coding isoforms, some of which show associations with colour pattern. Further work is needed to understand if this splicing variation affects scale pigmentation.

#### *WntA*

A third gene, *WntA*, controls several aspects of the size and shape of the colour pattern elements switched on and off by the previous two loci in both *H. erato* and *H. melpomene* (Figure 2) [38]. Unlike the previous two genes, some functional information does exist for this gene, with pharmacological treatments that enhance wnt signalling increasing the amount of melanin pigmentation on the wing and mirroring the natural effects of this locus [38]. On the other hand this locus has not been fine-mapped in the same detail as the previous two, so the location of functional sites is less clear. The evidence again seems to point to cis-regulatory variation, although mapping data places these closer to the coding region than is the case for the previous two genes [38,39], and coding variants have not been completely ruled out.

Like *cortex*, *WntA*'s role in wing patterning seems fairly ubiquitous, at least within the nymphalid butterflies [40]. Further, *WntA* also controls colour pattern differences between Batesian mimetic and non-mimetic populations of the admiral butterfly *Limenitis arthemis* in the eastern USA. In this species colour pattern variation shows a perfect association, again with the insertion of a transposable element, upstream of the coding exons of *WntA* [41].

#### *Other Heliconius loci*

At least two other loci are known to control aspects of pigmentation patterning variation in *Heliconius*. Another locus controlling the shape of the forewing band has been found on *H. melpomene* chromosome 13 in both *H. erato* and *H. melpomene* (Figure 2) [39,42]. Further work is

needed to identify the gene responsible, although the current mapping data implicates the *radial spoke head 3* gene [39].

The *K* locus controls a switch between yellow and white in *H. melpomene* and *H. cydno* (Figure 2) and has been mapped to a region of chromosome 1 that contains *wingless* [43], although the exact gene responsible is not known. Despite causing a simple switch in yellow pigment deposition it seems unlikely that the gene is involved in production of the yellow pigment since this is synthesised in the haemolymph, not *in situ* [44], and both yellow and white patterns can be present on the wing of a single individual with a particular *K* allele.

### **The importance of gene-exchange for *Heliconius* pattern variation**

In addition to this tool-kit of loci that can be used flexibly to generate a wide range of patterns, gene exchange between species also appears to have played an important role in pattern evolution in this group [45]. There are now several well-supported cases of species that have gained novel wing patterns as a result of rare hybridisation events with other species, allowing introgression of colour pattern genes [45–47]. This mode of evolution is likely to be particularly effective, as it means that an entire locus, containing multiple co-evolved mutations that have built up over evolutionary time, can be acquired instantaneously. It is also likely to be particularly advantageous in *Heliconius* where positive frequency dependent selection drives mimicry between species [4], so a species moving into a new area can rapidly join a mimicry ring by acquiring genes from other species already in that area.

However, gene-flow between species appears to be able to do more than just transfer existing patterns between species. In some cases it also appears to be able to generate novel patterns. Recent work has shown that the two distinct modules producing the “dennis” and “rays” pattern in Amazonian *H. melpomene* and *H. elevatus* have distinct evolutionary origins, with dennis arising first in the ancestor in *H. elevatus* and then being shared with *H. melpomene*, and rays arising later in *H. melpomene* and then being transferred in to *H. elevatus* [30]. Therefore the current phenotype of both of these species is a chimera of different patterns that evolved separately in each species with hybridisation acting to bring them together (Figure 3a).

### ***Papilio* supergenes**

Within the swallowtail butterfly genus *Papilio*, female-limited Batesian mimicry has evolved multiple times, with males being non-mimetic and females mimicking other, chemically defended, species [48]. In several of these species the females are also polymorphic, often with a male-like non-mimetic morph and morphs that mimic either one or several toxic species [5]. The genes controlling the switch between different female morphs have often been described as “supergenes” because of their ability to influence multiple aspects of the phenotype from a single genetic locus [49]. Two such genes, underlying female-limited polymorphism, have been identified (Figure 2). In contrast to the *Heliconius* system, the genes involved are not the same between different species, although both are transcription factors.

### ***Papilio polytes***

In this species there are multiple female morphs, including a non-mimetic male-like morph and three mimetic morphs resembling distantly related, toxic, *Pachliopta* swallowtails. Two teams independently mapped the female-limited polymorphism to the *doublesex* (*dsx*) gene [50,51]. This

autosomal gene controls sexual dimorphism in all insects that have been investigated [52]. Fascinatingly, in at least one of the mimetic morphs, *dsx* is inverted relative to the ancestral orientation found in the non-mimetic morph [51]. This has repressed recombination between the mimetic and non-mimetic alleles, allowing multiple sequence differences to accumulate.

As in other insects, there are multiple female-specific splicing isoforms of *dsx* in *P. polytes*, but the studies disagree on whether these are differentially expressed between morphs [50,51]. However, knockdown of *dsx* confirmed the functional role of this gene in specifying pattern and implied that coding or structural differences found in the gene could be important [51]. Knockdown of the mimetic *dsx* allele produced a switch to a non-mimetic pattern, whereas knockdown of the non-mimetic allele in heterozygous individuals, which have the mimetic phenotype (it is dominant), produced no phenotypic effect, suggesting that changes in the expression level of *dsx* alone are insufficient to produce a change in colour pattern. Nevertheless, there must also be some regulatory component that prevents the mimetic *dsx* allele from affecting male phenotype.

#### *Papilio dardanus*

This species also has multiple mimetic female morphs, but in this case they mimic very distantly related nymphalid butterfly species and non-mimetic female morphs are less common [53]. Mapping and population genomics analyses have identified the gene responsible for switching between morphs as the autosomal gene *engrailed* [54]. No inversions were present in the region, but one of the morphs had a duplication of *engrailed*, which could similarly act to reduce recombination and promote divergence between the alleles. In this case too, coding sequence changes are present and may have a functional role, although this remains to be tested. *Engrailed* expression patterns have previously been shown to correlate with adult wing patterns in the butterfly *Bicyclus anynana* [55], suggesting that the transcription factor may have a widespread role in regulating butterfly wing colour patterning.

#### *Other Papilio species*

*Papilio memnon* is similar to *P. dardanus* in having a large number of female morphs that are largely controlled by a single genetic locus [56], but the molecular genetics in this species has not been investigated. *Papilio [Pterourus] glaucus* has a mimetic and a non-mimetic female morph, largely controlled by a locus on the W chromosome, with a low frequency of a Z-linked modifier alleles coming from hybridisation with *P. canadensis* [57]. The fact that control is sex-linked in this species demonstrates that the genes involved are again distinct from those controlling polymorphism in *P. polytes* or *P. dardanus*.

### **Conclusions**

“Supergenes” controlling butterfly colour were initially thought to be made up of multiple tightly linked genes [49]. However, in both investigated *Papilio* species only a single gene seems to be involved [51,54]. The situation in *Heliconius* is less clear. *H. numata*, the only species with classical supergene architecture, does have large inversions between different mimetic alleles, which lock together multiple genes [31]. Current evidence points to just one of these genes, *cortex*, as having a major effect on phenotype [33], but it is still too early to say whether other genes in the inversions might act with *cortex* to produce some of the phenotypes. Molecular investigation of other systems

has also shown that in some cases supergenes can involve the action of multiple genes locked together in inversions [49,58,59].

Something that is clear is that these loci have not evolved through genomic rearrangements that have brought together previously unlinked genes from around the genome [60]. Indeed, in *Heliconius* the steps involved in building a supergene can be observed. The three major loci described above (*optix*, *cortex* and *WntA*) control most colour pattern variation not only in the co-mimetic species *H. erato* and *H. melpomene* but also in *H. hecale* and *H. ismenius*, which have spotted patterns like *H. numata* (Figure 2) [24]. This, together with other studies [39], illustrates that each of these loci can have diverse effects on phenotype and that these effects can sometimes be overlapping and can vary in their magnitude. It is therefore not a great leap to see how accumulation of mutations concentrated at just one of these loci could take on broad phenotypic effects, with polymorphism at other loci being reduced. Indeed traces of this process can still be seen in *H. numata*, where variation linked to *wntA*, *optix*, *K*, and chromosome 13 was found to have minor effects on phenotype (Figure 2) [61].

This also demonstrates that the genetic variants in these systems are in fact the product of a, probably lengthy, process of refinement, that has likely led to a reduction in the number of loci controlling colour pattern. Selection will act against unfit recombinant phenotypes, and will be strongest in fully polymorphic populations and weaker (but still present) where morphs are parapatric [32]. Therefore, we need to be cautious about making inferences from these systems about the earliest stages of divergence and the distributions and effect sizes of the first mutations that were targeted by selection. It is likely that multiple mutations at each of these loci have led to the current polymorphic alleles, and evolution may also have been facilitated by mutations at unlinked loci, at which polymorphism was later lost due to selection [60].

A key remaining question is why the patterns of gene re-use are so different between *Heliconius* and *Papilio*, especially when, superficially, the workings of the different *Papilio* species seem so similar. One obvious possibility is the different forms of mimicry involved: *Heliconius* are Müllerian mimics, with different species converging on the same patterns, while the *Papilio* species mimic different, distantly related species. Maybe this is why the different *Heliconius* species use the same loci, while the *Papilio* species do not. However, the use of the same loci even in species that have very different patterns, like *H. melpomene* and *H. hecale*, suggests that this is not the whole story. Another plausible explanation could be the ubiquity of both colour pattern polymorphism and gene-flow throughout *Heliconius*. This could have helped to maintain polymorphism at the tool-kit genes, making them predictable targets for selection whenever a new colour pattern became favourable. In contrast, the polymorphic *Papilio* species are more sparsely distributed both geographically and on the phylogeny, perhaps making the evolution of mimicry somewhat more “independent” between each species. This argument does not hold for other examples of gene re-use, however. For example, why the peppered moth and admiral butterfly have also used two of the *Heliconius* tool-kit genes [37,41], as these events are clearly evolutionarily distinct. Ultimately, the question of what drives patterns of gene use can only be answered by comparing more systems and understanding the genetic basis of further adaptive and polymorphic traits.

## References

1. Bates HW: **Contributions to an insect fauna of the Amazon valley (Lepidoptera: Heliconidae).** *Biol. J. Linn. Soc.* 1981, **16**:41–54.
2. Olofsson M, Løvlie H, Tibblin J, Jakobsson S, Wiklund C: **Eyespot display in the peacock butterfly triggers antipredator behaviors in naïve adult fowl.** *Behav. Ecol.* 2013, **24**:305–310.
3. Merrill RM, Wallbank RWR, Bull V, Salazar PCA, Mallet J, Stevens M, Jiggins CD: **Disruptive ecological selection on a mating cue.** *Proc. R. Soc. B Biol. Sci.* 2012, **279**:4907–4913.
4. Chouteau M, Arias M, Joron M: **Warning signals are under positive frequency-dependent selection in nature.** *Proc. Natl. Acad. Sci.* 2016, **113**:2164–2169.
5. Mallet J, Joron M: **Evolution of Diversity in Warning Color and Mimicry: Polymorphisms, Shifting Balance, and Speciation.** *Annu. Rev. Ecol. Syst.* 1999, **30**:201–233.
6. Merrill RM, Chia A, Nadeau NJ: **Divergent warning patterns contribute to assortative mating between incipient *Heliconius* species.** *Ecol. Evol.* 2014, **4**:911–917.
7. Servedio MR, Doorn GSV, Kopp M, Frame AM, Nosil P: **Magic traits in speciation: “magic” but not rare?** *Trends Ecol. Evol.* 2011, **26**:389–397.
8. Nijhout HF: *The development and evolution of butterfly wing patterns.* Smithsonian Institution Press; 1991.
9. Sugumaran M: **Comparative Biochemistry of Eumelanogenesis and the Protective Roles of Phenoloxidase and Melanin in Insects.** *Pigment Cell Res.* 2002, **15**:2–9.
10. True JR: **Insect melanism: the molecules matter.** *Trends Ecol. Evol.* 2003, **18**:640–647.
11. Ferguson LC, Green J, Surridge A, Jiggins CD: **Evolution of the insect yellow gene family.** *Mol. Biol. Evol.* 2011, **28**:257–272.
12. Ferguson LC, Maroja L, Jiggins CD: **Convergent, modular expression of *ebony* and *tan* in the mimetic wing patterns of *Heliconius* butterflies.** *Dev. Genes Evol.* 2011, **221**:297–308.
13. Hof AE van't, Saccheri IJ: **Industrial melanism in the peppered moth is not associated with genetic variation in canonical melanisation gene candidates.** *PLOS ONE* 2010, **5**:e10889.
14. Mundy NI, Badcock NS, Hart T, Scribner K, Janssen K, Nadeau NJ: **Conserved genetic basis of a quantitative plumage trait involved in mate choice.** *Science* 2004, **303**:1870–1873.
15. Nadeau NJ, Burke T, Mundy NI: **Evolution of an avian pigmentation gene correlates with a measure of sexual selection.** *Proc. R. Soc. B Biol. Sci.* 2007, **274**:1807–1813.
16. Hoekstra HE, Hirschmann RJ, Bunday RA, Insel PA, Crossland JP: **A single amino acid mutation contributes to adaptive beach mouse color pattern.** *Science* 2006, **313**:101–104.
17. Manceau M, Domingues VS, Mallarino R, Hoekstra HE: **The developmental role of *agouti* in color pattern evolution.** *Science* 2011, **331**:1062–1065.



18. Gompel N, Prud'homme B, Wittkopp PJ, Kassner VA, Carroll SB: **Chance caught on the wing: cis-regulatory evolution and the origin of pigment patterns in *Drosophila***. *Nature* 2005, **433**:481–487.
19. Wittkopp PJ, Vaccaro K, Carroll SB: **Evolution of yellow gene regulation and pigmentation in *Drosophila***. *Curr. Biol.* 2002, **12**:1547–1556.
20. Merrill RM, Dasmahapatra KK, Davey JW, Dell'Aglio DD, Hanly JJ, Huber B, Jiggins CD, Joron M, Kozak KM, Llaurens V, et al.: **The diversification of *Heliconius* butterflies: what have we learned in 150 years?** *J. Evol. Biol.* 2015, **28**:1417–1438.
21. Kronforst MR, Kapan DD, Gilbert LE: **Parallel genetic architecture of parallel adaptive radiations in mimetic *Heliconius* butterflies**. *Genetics* 2006, **174**:535–539.
22. Baxter SW, Papa R, Chamberlain N, Humphray SJ, Joron M, Morrison C, ffrench-Constant RH, McMillan WO, Jiggins CD: **Convergent evolution in the genetic basis of Müllerian mimicry in *Heliconius* butterflies**. *Genetics* 2008, **180**:1567–1577.
23. Joron M, Papa R, Beltrán M, Chamberlain N, Mavárez J, Baxter S, Abanto M, Bermingham E, Humphray SJ, Rogers J, et al.: **A conserved supergene locus controls colour pattern diversity in *Heliconius* butterflies**. *PLoS Biol.* 2006, **4**.
24. Huber B, Whibley A, Poul YL, Navarro N, Martin A, Baxter S, Shah A, Gilles B, Wirth T, McMillan WO, et al.: **Conservatism and novelty in the genetic architecture of adaptation in *Heliconius* butterflies**. *Heredity* 2015, **114**:515–524. \*From crosses between subspecies the authors show that colour pattern variation in *H. hecale* and *H. ismenius* maps to the same genomic regions previously identified in other *Heliconius* species with very different patterns (the “tool-kit” genes).
25. Reed RD, Papa R, Martin A, Hines HM, Counterman BA, Pardo-Diaz C, Jiggins CD, Chamberlain NL, Kronforst MR, Chen R, et al.: **optix drives the repeated convergent evolution of butterfly wing pattern mimicry**. *Science* 2011, **333**:1137–1141.
26. Seimiya M, Gehring WJ: **The *Drosophila* homeobox gene *optix* is capable of inducing ectopic eyes by an eyeless-independent mechanism**. *Development* 2000, **127**:1879–1886.
27. Martin A, McCulloch KJ, Patel NH, Briscoe AD, Gilbert LE, Reed RD: **Multiple recent co-options of *Optix* associated with novel traits in adaptive butterfly wing radiations**. *EvoDevo* 2014, **5**:7.
28. Nadeau NJ, Whibley A, Jones RT, Davey JW, Dasmahapatra KK, Baxter SW, Quail MA, Joron M, ffrench-Constant RH, Blaxter ML, et al.: **Genomic islands of divergence in hybridizing *Heliconius* butterflies identified by large-scale targeted sequencing**. *Philos. Trans. R. Soc. B Biol. Sci.* 2012, **367**:343–353.
29. Supple MA, Hines HM, Dasmahapatra KK, Lewis JJ, Nielsen DM, Lavoie C, Ray DA, Salazar C, McMillan WO, Counterman BA: **Genomic architecture of adaptive color pattern divergence and convergence in *Heliconius* butterflies**. *Genome Res.* 2013, **23**:1248–1257.
30. Wallbank RWR, Baxter SW, Pardo-Diaz C, Hanly JJ, Martin SH, Mallet J, Dasmahapatra KK, Salazar C, Joron M, Nadeau N, et al.: **Evolutionary novelty in a butterfly wing pattern through enhancer shuffling**. *PLoS Biol* 2016, **14**:e1002353. \*\*Using population genomics approaches the authors identify discrete regulatory modules of the *optix* gene controlling colour pattern

elements and show that these have distinct evolutionary histories, arising in different species before being brought together by hybridisation.

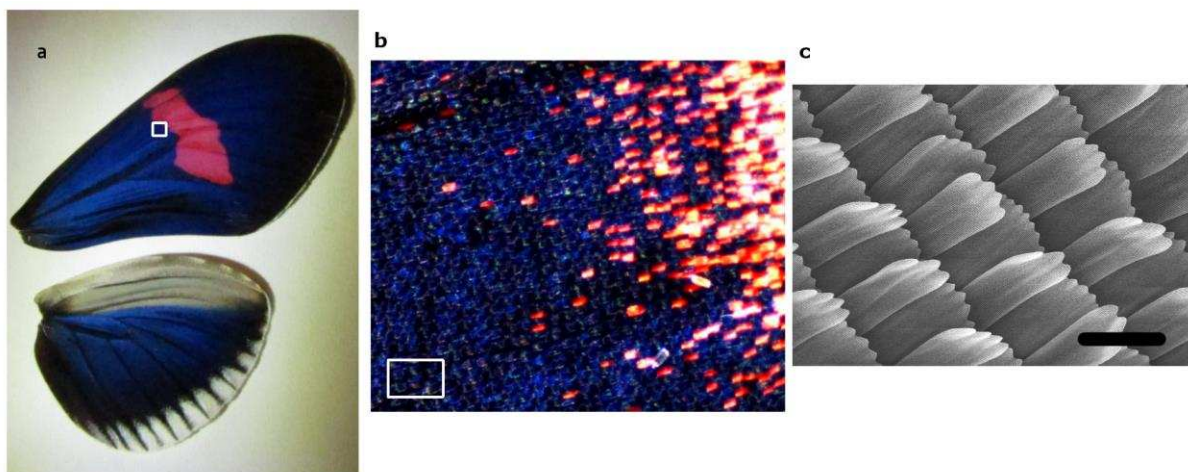
31. Joron M, Frezal L, Jones RT, Chamberlain NL, Lee SF, Haag CR, Whibley A, Becuwe M, Baxter SW, Ferguson L, et al.: **Chromosomal rearrangements maintain a polymorphic supergene controlling butterfly mimicry.** *Nature* 2011, **477**:203–206.
32. Le Poul Y, Whibley A, Chouteau M, Prunier F, Llaurens V, Joron M: **Evolution of dominance mechanisms at a butterfly mimicry supergene.** *Nat. Commun.* 2014, **5**:5644.
33. Nadeau NJ, Pardo-Diaz C, Whibley AC, Supple MA, Saenko SV, Wallbank RWR, Wu GC, Maroja L, Ferguson LC, Hanly JJ, et al.: **The gene *cortex* controls mimicry and crypsis in butterflies and moths.** *Nature* [date unknown], **In Press**. \*\*Using population genomics and gene expression analyses the authors identify the cell cycle gene *cortex* as controlling major aspects of colour pattern variation in several *Heliconius* species.
34. Chu T, Henrion G, Haegeli V, Strickland S: ***Cortex*, a *Drosophila* gene required to complete oocyte meiosis, is a member of the *Cdc20/fizzy* protein family.** *Genesis* 2001, **29**:141–152.
35. Peters J-M: **The anaphase promoting complex/cyclosome: a machine designed to destroy.** *Nat. Rev. Mol. Cell Biol.* 2006, **7**:644–656.
36. ffrench-Constant RH: **Butterfly wing colours and patterning by numbers.** *Heredity* 2012, **108**:592–593.
37. Van't Hof AE, Campagne P, Yung C, Lingley J, Quail MA, Hall N, Darby AC, Saccheri IJ: **The industrial melanism mutation in British peppered moths is a transposable element.** *Nature* [date unknown], **In Press**. \*Using population genomics and gene expression analyses the authors identify that an insertion of a transposable element into an intron of the *cortex* gene caused industrial melanism in the peppered moth. This is the same gene that controls major aspects of colour pattern variation in *Heliconius* butterflies.
38. Martin A, Papa R, Nadeau NJ, Hill RI, Counterman BA, Halder G, Jiggins CD, Kronforst MR, Long AD, McMillan WO, et al.: **Diversification of complex butterfly wing patterns by repeated regulatory evolution of a *Wnt* ligand.** *Proc. Natl. Acad. Sci.* 2012, **109**:12632–12637.
39. Nadeau NJ, Ruiz M, Salazar P, Counterman B, Medina JA, Ortiz-Zuazaga H, Morrison A, McMillan WO, Jiggins CD, Papa R: **Population genomics of parallel hybrid zones in the mimetic butterflies, *H. melpomene* and *H. erato*.** *Genome Res.* 2014, **24**:1316–1333.
40. Martin A, Reed RD: ***Wnt* signaling underlies evolution and development of the butterfly wing pattern symmetry systems.** *Dev. Biol.* 2014, **395**:367–378.
41. Gallant JR, Imhoff VE, Martin A, Savage WK, Chamberlain NL, Pote BL, Peterson C, Smith GE, Evans B, Reed RD, et al.: **Ancient homology underlies adaptive mimetic diversity across butterflies.** *Nat. Commun.* 2014, **5**:4817. \*Association mapping demonstrates that the insertion of a transposable element within an intron of the *WntA* gene is responsible for colour pattern variation in *Limnitis arthemis*. *In situ* hybridisation and heparin injections confirm that *wntA* has similar effects on wing pattern in both *Heliconius* and *Limnitis*.
42. Baxter SW, Johnston SE, Jiggins CD: **Butterfly speciation and the distribution of gene effect sizes fixed during adaptation.** *Heredity* 2009, **102**:57–65.

43. Kronforst MR, Young LG, Kapan DD, McNeely C, O'Neill RJ, Gilbert LE: **Linkage of butterfly mate preference and wing color preference cue at the genomic location of *wingless***. *Proc. Natl. Acad. Sci.* 2006, **103**:6575–6580.
44. Reed RD, McMillan WO, Nagy LM: **Gene expression underlying adaptive variation in *Heliconius* wing patterns: non-modular regulation of overlapping *cinnabar* and *vermilion* prepatterns**. *Proc. Biol. Sci.* 2008, **275**:37–45.
45. Consortium THG: **Butterfly genome reveals promiscuous exchange of mimicry adaptations among species**. *Nature* 2012, **487**:94–98.
46. Pardo-Diaz C, Salazar C, Baxter SW, Merot C, Figueiredo-Ready W, Joron M, McMillan WO, Jiggins CD: **Adaptive introgression across species boundaries in *Heliconius* butterflies**. *PLoS Genet* 2012, **8**:e1002752.
47. Zhang W, Dasmahapatra KK, Mallet J, Moreira GRP, Kronforst MR: **Genome-wide introgression among distantly related *Heliconius* butterfly species**. *Genome Biol.* 2016, **17**:25.
48. Kunte K: **The diversity and evolution of Batesian mimicry in *Papilio* swallowtail butterflies**. *Evolution* 2009, **63**:2707–2716.
49. Thompson MJ, Jiggins CD: **Supergenes and their role in evolution**. *Heredity* 2014, **113**:1–8.
50. Kunte K, Zhang W, Tenger-Trolander A, Palmer DH, Martin A, Reed RD, Mullen SP, Kronforst MR: ***doublesex* is a mimicry supergene**. *Nature* 2014, **507**:229–232. \*Using mapping, genomics and expression analyses the authors identify the *doublesex* gene as controlling colour pattern polymorphism in *Papilio polytes*.
51. Nishikawa H, Iijima T, Kajitani R, Yamaguchi J, Ando T, Suzuki Y, Sugano S, Fujiyama A, Kosugi S, Hirakawa H, et al.: **A genetic mechanism for female-limited Batesian mimicry in *Papilio* butterfly**. *Nat. Genet.* 2015, **47**:405–409. \*\*From whole-genome sequencing the authors identify an inversion of the *doublesex* gene associated with mimetic colour pattern. They perform knock-down experiments to show that this allele is responsible for switching colour pattern.
52. Williams TM, Carroll SB: **Genetic and molecular insights into the development and evolution of sexual dimorphism**. *Nat. Rev. Genet.* 2009, **10**:797–804.
53. Thompson MJ, Timmermans MJTN: **Characterising the phenotypic diversity of *Papilio dardanus* wing patterns using an extensive museum collection**. *PLoS ONE* 2014, **9**:e96815.
54. Timmermans MJTN, Baxter SW, Clark R, Heckel DG, Vogel H, Collins S, Papanicolaou A, Fukova I, Joron M, Thompson MJ, et al.: **Comparative genomics of the mimicry switch in *Papilio dardanus***. *Proc R Soc B* 2014, **281**:20140465. \*Using population genomics the authors identify the engrailed gene as being associated with colour pattern polymorphism in *Papilio dardanus*. They also identify a duplication of this gene in one morph.
55. Brunetti CR, Selegue JE, Monteiro A, French V, Brakefield PM, Carroll SB: **The generation and diversification of butterfly eyespot color patterns**. *Curr. Biol.* 2001, **11**:1578–1585.
56. Clarke CA, Sheppard PM, Thornton IWB: **The genetics of the mimetic butterfly *Papilio Memnon* L**. *Philos. Trans. R. Soc. Lond. B Biol. Sci.* 1968, **254**:37–89.

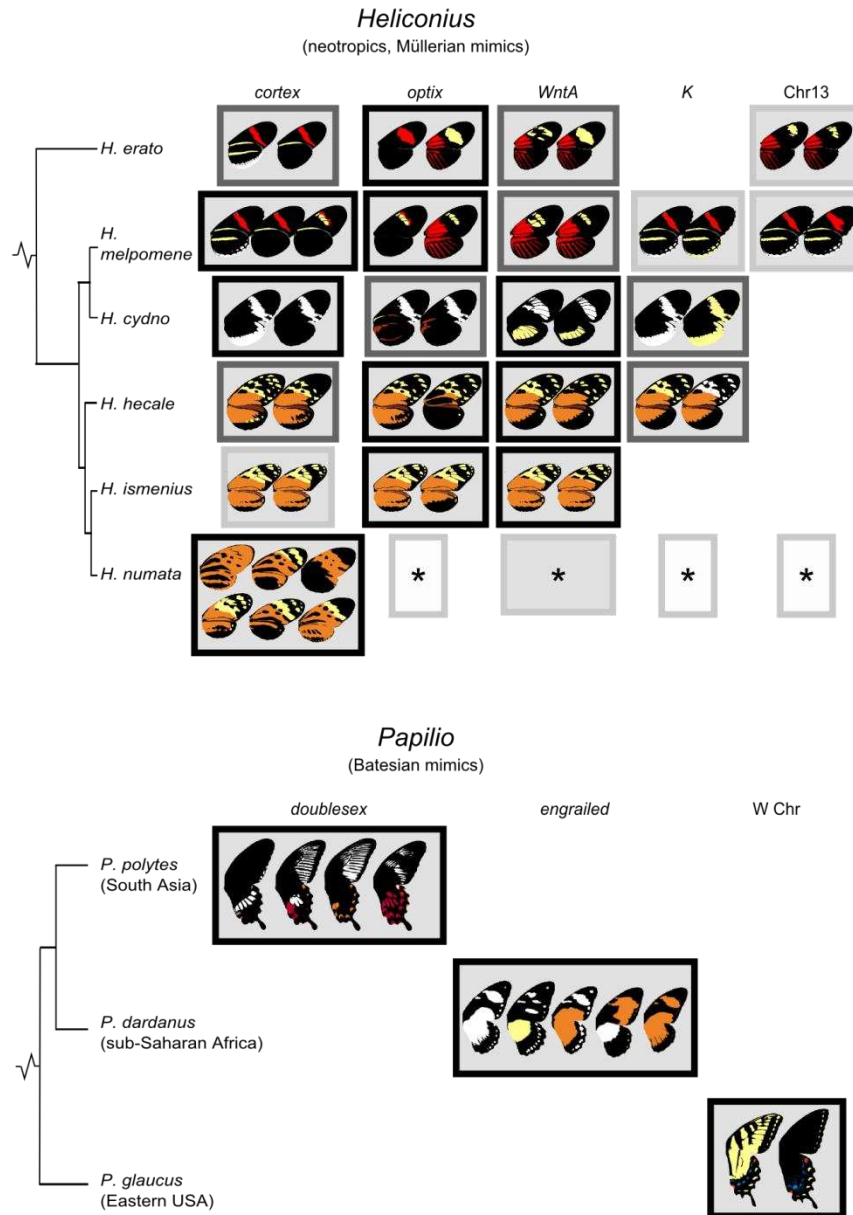
57. Scriber JM, Hagen RH, Lederhouse RC: **Genetics of mimicry in the Tiger Swallowtail butterflies, *Papilio glaucus* and *P. canadensis* (Lepidoptera: Papilionidae).** *Evolution* 1996, **50**:222–236.
58. Küpper C, Stocks M, Risse JE, dos Remedios N, Farrell LL, McRae SB, Morgan TC, Karlionova N, Pinchuk P, Verkuil YI, et al.: **A supergene determines highly divergent male reproductive morphs in the ruff.** *Nat. Genet.* 2016, **48**:79–83.
59. Tuttle EM, Bergland AO, Korody ML, Brewer MS, Newhouse DJ, Minx P, Stager M, Betuel A, Cheviron ZA, Warren WC, et al.: **Divergence and Functional Degradation of a Sex Chromosome-like Supergene.** *Curr. Biol. CB* 2016, **26**:344–350.
60. Booker T, Ness RW, Charlesworth D: **Molecular Evolution: Breakthroughs and mysteries in Batesian mimicry.** *Curr. Biol.* 2015, **25**:R506–R508.
61. Jones RT, Salazar PA, French-Constant RH, Jiggins CD, Joron M: **Evolution of a mimicry supergene from a multilocus architecture.** *Proc. Biol. Sci.* 2012, **279**:316–325.
62. Ferguson L, Lee SF, Chamberlain N, Nadeau NJ, Joron M, Baxter S, Wilkinson P, Papanicolaou A, Kumar S, Kee T-J, et al.: **Characterization of a hotspot for mimicry: assembly of a butterfly wing transcriptome to genomic sequence at the *HmYb/Sb* locus.** *Mol. Ecol.* 2010, **19**:240–254.

#### Acknowledgements

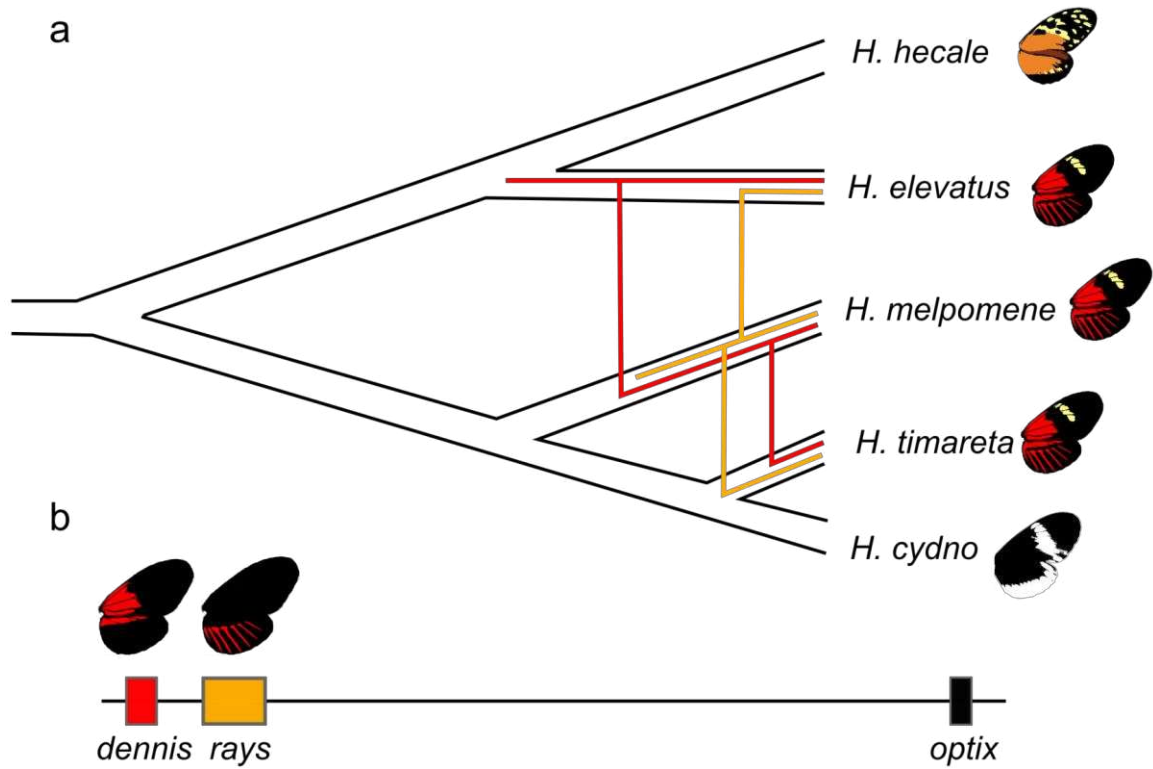
NNJ is funded by a NERC Independent Research Fellowship (NE/K008498/1).



**Figure 1.** Butterfly wing patterns are made up of arrays of coloured scales. A) Wings of *Heliconius erato cyrba*. The red and black colours are produced by melanin and ommochrome pigments respectively. The blue colour is due to scale nano-structure. B) Magnification of the wing showing the scales. C) Electron micrograph of wing scales. Bar indicates 50µm. White boxes (in a and b) indicate approximate areas magnified (in b and c respectively).



**Figure 2.** Genes controlling colour pattern in *Heliconius* and *Papilio*. Examples of the variation produced by each of the loci are shown for each species, the patterns differ more if the loci have a larger effect. Box colour also indicates effect size: black, large effect; dark grey, medium effect; light grey, minor effect. In some cases additional linked genes may be involved. \*These loci have minor effects on phenotype in *H. numata* which are hard to represent pictorially, the size and fill shade of the boxes indicates the effect size. Based on information from [21,23–25,33,38,39,42,43,50,54,57,61,62]



**Figure 3.** Evolution of the “dennis” and “rays” regulatory modules of the *optix* gene in *Heliconius melpomene* and related taxa. A) Evolutionary trees of dennis (red) and rays (orange) overlain on the species tree. B) Schematic representation of the regulatory modules. Modified from [30].