



Deposited via The University of York.

White Rose Research Online URL for this paper:

<https://eprints.whiterose.ac.uk/id/eprint/202732/>

Version: Published Version

---

**Article:**

Vidyasagan, Aishwarya, Readshaw, Anne Elizabeth, Jarde, Alexander et al. (2024) Is tobacco use associated with risk of recurrence and mortality among people with tuberculosis? A systematic review and meta-analysis. *Chest*. pp. 22-47. ISSN: 0012-3692

<https://doi.org/10.1016/j.chest.2023.08.021>

---

**Reuse**

This article is distributed under the terms of the Creative Commons Attribution (CC BY) licence. This licence allows you to distribute, remix, tweak, and build upon the work, even commercially, as long as you credit the authors for the original work. More information and the full terms of the licence here:

<https://creativecommons.org/licenses/>

**Takedown**

If you consider content in White Rose Research Online to be in breach of UK law, please notify us by emailing [eprints@whiterose.ac.uk](mailto:eprints@whiterose.ac.uk) including the URL of the record and the reason for the withdrawal request.



# Is Tobacco Use Associated With Risk of Recurrence and Mortality Among People With TB?

## A Systematic Review and Meta-Analysis

Aishwarya Lakshmi Vidyasagan, PhD; Anne Readshaw, PhD; Melanie Boeckmann, DrPH; Alexander Jarde, PhD; Faraz Siddiqui, MSc; Anna-Marie Marshall, PhD; Janita Akram, MBBS; Jonathan E. Golub, PhD; Kamran Siddiqi, PhD; and Omara Dogar, PhD



**BACKGROUND:** Associations between tobacco use and poor TB treatment outcomes are well documented. However, for important outcomes such as TB recurrence or relapse and mortality during treatment, as well as for associations with smokeless tobacco (ST), the evidence is not summarized systematically.

**RESEARCH QUESTION:** Is tobacco use associated with risk of poor treatment outcomes among people with TB?

**STUDY DESIGN AND METHODS:** The MEDLINE, Embase, and Cumulative Index of Nursing and Allied Health Literature databases were searched on November 22, 2021. Epidemiologic studies reporting associations between tobacco use and at least one TB treatment outcome were eligible. Independent double-screening, extractions, and quality assessments were undertaken. Random effects meta-analyses were conducted for the two primary review outcomes (TB recurrence or relapse and mortality during treatment), and heterogeneity was explored using subgroups. Other outcomes were synthesized narratively.

**RESULTS:** Our searches identified 1,249 records, of which 28 were included in the meta-analyses. Based on 15 studies, higher risk of TB recurrence or relapse was found with ever using tobacco vs never using tobacco (risk ratio [RR], 1.78; 95% CI, 1.31-2.43;  $I^2 = 85\%$ ), current tobacco use vs no tobacco use (RR, 1.95; 95% CI, 1.59-2.40;  $I^2 = 72\%$ ), and former tobacco use vs never using tobacco (RR, 1.84; 95% CI, 1.21-2.80;  $I^2 = 4\%$ ); heterogeneity arose from differences in study quality, design, and participant characteristics. Thirty-eight studies were identified for mortality, of which 13 reported mortality during treatment. Ever tobacco use (RR, 1.55; 95% CI, 1.32-1.81;  $I^2 = 0\%$ ) and current tobacco use (RR, 1.51; 95% CI, 1.09-2.10;  $I^2 = 87\%$ ) significantly increased the likelihood of mortality during treatment among people with TB compared with never using tobacco and not currently using tobacco, respectively; heterogeneity was explained largely by differences in study design. Almost all studies in the meta-analyses scored high or moderate on quality assessments. Narrative synthesis showed that tobacco use was a risk factor for other unfavorable TB treatment outcomes, as previously documented. Evidence on ST was limited, but identified studies suggested an increased risk for poor outcomes with its use compared with not using it.

**INTERPRETATION:** Tobacco use significantly increases the risk of TB recurrence or relapse and mortality during treatment among people with TB, highlighting the need to address tobacco use to improve TB outcomes.

**TRIAL REGISTRY:** PROSPERO; No.: CRD42017060821; URL: <https://www.crd.york.ac.uk/prospero/> CHEST 2024; 165(1):22-47

**KEY WORDS:** meta-analysis; risk of mortality; risk of recurrence; smoking; systematic review; tobacco; TB

## Take-home Points

**Study Question:** Is tobacco use associated with the risk of recurrence and mortality among people with TB?

**Results:** A higher risk of TB recurrence or relapse was found with ever using tobacco vs never using tobacco (risk ratio [RR], 1.78; 95% CI, 1.31-2.43;  $I^2 = 85\%$ ), current tobacco use vs no tobacco use (RR, 1.95; 95% CI, 1.59-2.40;  $I^2 = 72\%$ ), and former tobacco use vs never using tobacco (RR, 1.84; 95% CI, 1.21-2.80;  $I^2 = 4\%$ ). Moreover, ever tobacco use (RR, 1.55; 95% CI, 1.32-1.81;  $I^2 = 0\%$ ) and current tobacco use (RR, 1.51; 95% CI, 1.09-2.10;  $I^2 = 87\%$ ) significantly increased the likelihood of mortality among people with TB compared with never and no tobacco use, respectively. Evidence on smokeless tobacco was limited, but some studies suggested an increased risk of poor outcomes associated with its use compared with not using it.

**Interpretation:** Tobacco use significantly increases the risk of TB recurrence or relapse and mortality during treatment among people with TB, highlighting the need to address tobacco use to improve TB outcomes.

Tobacco use and TB contribute significantly to the global burden of disease, both individually and by acting synergistically. Although global tobacco use prevalence has declined (22.7% in 2007 to 19.6% in 2019), the total number of people using tobacco remains high because of population growth.<sup>1</sup> More than 80% of the 1.3 billion individuals worldwide who use tobacco live in low-income and middle-income countries (LMICs), where the TB burden also is substantial.<sup>2</sup> Not only is this dual burden a grave problem in LMICs, but also tobacco use rates are estimated to be higher (approximately 8%) among people with TB than in the general population.<sup>3</sup> Assuming that the relative prevalence of tobacco use

and TB remain stable, it is estimated that > 40 million TB-related deaths will be attributable to tobacco use by 2050.<sup>4</sup> In addition, smokeless tobacco (ST) is consumed by > 300 million people worldwide, with some studies suggesting adverse associations with TB.<sup>5,6</sup> In South Asian countries, ST use tends to be even higher than tobacco use alone among people with TB.<sup>7</sup>

TB is one of the most common chronic infectious diseases. In 2020, approximately 1.3 million TB-related deaths occurred among people without HIV, up from 1.2 million in 2019.<sup>8</sup> COVID-19 has impeded further an already fragile global response to ending TB, with the first year-on-year estimated increase since 2005 in the number of TB deaths for 2020 and 2021.<sup>8,9</sup> In these challenging times, integrating policies for tobacco control within routine TB care becomes particularly critical.

Moderate to strong evidence on the association of tobacco use with TB infection (latent) and disease (active TB) exists; however, evidence on TB mortality resulting from tobacco use was inconclusive in systematic reviews last conducted in 2007.<sup>10-12</sup> Although one of those reviews also reported significant association of retreatment TB with tobacco use,<sup>12</sup> this finding was based on only two studies. Since then, several studies have been published on this topic. Two systematic reviews in 2020 further identified negative impacts of tobacco use on TB treatment.<sup>13,14</sup> However, these reviews presented combined outcomes, one as “poor outcomes” (combining failure, loss to follow-up, and death)<sup>13</sup> and the other as “unfavourable outcomes” (combining failure, transfer, loss to follow-up, and death).<sup>14</sup> Both reviews did not include TB recurrence or relapse explicitly, and the latter included only current tobacco use, which limited the scope.

Given the importance of reducing TB recurrence or relapse especially in the context of drug resistance and related mortality to the End Tuberculosis

**ABBREVIATIONS:** DRTB = drug-resistant TB; GRADE = Grading of Recommendations, Assessment, Development, and Evaluations; LMIC = low-income and middle-income country; RR = risk ratio; ST = smokeless tobacco

**AFFILIATIONS:** From the Department of Health Sciences (A. L. V., F. S., A.-M. M., K. S., and O. D.), and the Hull York Medical School (J. A. and K. S.), University of York; the Yorkshire and North Lincolnshire Area Team (A. R.), Natural England, York; Helen McArdle Nursing and Care Research Institute (A.-M. M.), Faculty of Health Sciences and Wellbeing, University of Sunderland, Sunderland, England; Usher Institute (O. D.), the University of Edinburgh, Edinburgh, Scotland; the Department of Global Health (M. B.), Institute of Public Health and Nursing Research (IPP), University of Bremen, Bremen, Germany; the Université de Paris (A. J.), Centre d'Épidémiologie Clinique, Hôpital

Hôtel-Dieu, and Cochrane France, Paris, France; and Center for Tuberculosis Research (J. E. G.), School of Medicine, the Johns Hopkins University, Baltimore, MD.

This article was presented at The Union World Conference on Lung Health virtual meeting, November 8-11, 2022.

**CORRESPONDENCE TO:** Omara Dogar, PhD; email: [omara.dogar@york.ac.uk](mailto:omara.dogar@york.ac.uk)

Copyright © 2023 The Author(s). Published by Elsevier Inc under license from the American College of Chest Physicians. This is an open access article under the CC BY license (<http://creativecommons.org/licenses/by/4.0/>).

**DOI:** <https://doi.org/10.1016/j.chest.2023.08.021>

Strategy,<sup>15</sup> we determined their association with tobacco use. Our risk estimates offer what was

missed in previous meta-analyses, including an expanded remit to include all tobacco products.

## Study Design and Methods

This review was registered with PROSPERO (Identifier: CRD42017060821) and follows the Preferred Reporting Items for Systematic Reviews and Meta-Analysis guidelines (e-Appendix 1).<sup>16</sup>

### Search Strategy and Selection Criteria

Three electronic databases (MEDLINE, Embase, and Cumulative Index of Nursing and Allied Health Literature) were searched from inception to November 22, 2021. Search terms for tobacco use (*smoking, smokeless*) were developed from previous reviews, whereas those for TB outcomes were developed from a monograph on TB and tobacco control.<sup>17</sup> Searches were conducted by combining both sets of terms (e-Appendix 2); no language restrictions were applied during searching.

We included epidemiologic studies (cohort, case control, and cross-sectional) on people with TB (not restricted by age, sex, comorbidities, pulmonary or extrapulmonary presentation, or geographic region) that measured the effect of ever, current, or past tobacco use (with smoke and smokeless) on TB treatment outcomes (Table 1). Studies that included both people with drug-susceptible and drug-resistant TB (DRTB) were eligible and were analyzed as explained herein. However, studies on treatment outcomes exclusively among people with DRTB were excluded because the treatment course and its association with tobacco is likely to be different in this population. Similarly, studies on treatment outcomes exclusively among people with retreatment TB

were excluded, whereas studies that included both people with new and retreatment TB were eligible. Our primary review outcomes were TB recurrence or relapse and mortality during treatment; within the outcome of mortality, we also included all-cause mortality among people with TB and TB mortality. Secondary outcomes were default, failure, unsuccessful treatment (combined mortality, default, and failure), delayed sputum conversion, treatment nonadherence, severity of disease, and drug resistance development. Studies reporting secondhand tobacco smoke exposure or unclear outcomes were excluded. Randomized controlled trials, reviews, case series, and case reports also were excluded.

We screened the references of included articles and relevant systematic reviews to identify additional studies. All identified reports underwent deduplication and independent double screening by two of the authors (A. R. and M. B.) based on title and abstract. Full-text review of potentially relevant articles also was assessed independently by two reviewers (F. S. and M. B.), whereas a third reviewer (A. L. V. or O. D.) was consulted when consensus could not be reached. During screening, we considered only studies written in English because of constrained resources for translation.

### Data Extraction and Synthesis

Groups of two reviewers (A. R. and A.-M. M. or A. J. and A. L. V.) independently extracted data from included studies using a piloted data extraction form specifically designed for this review. The main sections included: study design and characteristics; sample size and

**TABLE 1** ] Definitions for TB Treatment Outcomes

Outcome	Definition
Recurrence or relapse <sup>a</sup>	Those previously treated for TB who were declared cured or who completed treatment at the end of the most recent course and again receive a diagnosis of an episode of TB (either a true relapse or a new episode of TB caused by reinfection, also known as recurrence).
Mortality <sup>b</sup>	<ul style="list-style-type: none"> <li>• TB mortality: the cause of death designated as being the result of TB or dying with verified TB. Death certificate notification, medical records, or family interviews are considered acceptable sources of information.</li> <li>• Death during TB treatment</li> <li>• All-cause mortality among people with a TB diagnosis</li> </ul>
Treatment default <sup>a</sup>	Those previously treated for TB who were declared lost to follow-up at the end of the most recent course of treatment
Treatment failure <sup>a</sup>	Those treated for TB for whom the most recent course of treatment failed
Delayed sputum conversion <sup>a</sup>	Delayed conversion rate of positive sputum smear results in patients with pulmonary TB at follow-up (after 2 months of therapy). Nonconversion was defined as persistent positive sputum smear results for patients with TB at the end of the 2- or 3-mo intensive phase of treatment.
Poor treatment adherence	Both compliance with the number of days anti-TB drugs were taken or the number of tablets taken of the prescribed amount is considered an acceptable measure of adherence.
Severity of disease <sup>b</sup>	Higher bacillary load (smear grading 3+ and higher), more cavitation (advanced radiologic lesions), hospitalized, symptoms (cough, dyspnea, upper zone involvement)
Drug-resistant TB <sup>a</sup>	TB that is resistant to $\geq 1$ first-line antituberculosis drugs

<sup>a</sup>World Health Organization Global Tuberculosis Report, 2013.<sup>18</sup>

<sup>b</sup>TB/tobacco monograph.<sup>17</sup>

participant demographics; and exposure and outcome details, including type of tobacco (with smoke or smokeless), type of exposure (ever, current, or past), frequency of outcome among exposed and unexposed participants, and the measures of effect reported. The extraction forms were compared, and disagreements were resolved in the first instance by discussion or with a third reviewer (O. D.) if consensus could not be reached.

Risk of bias was evaluated using the Quality Assessment Tool for Quantitative Studies,<sup>19</sup> and each study was rated as strong, moderate, or weak in the following categories: study design, analysis, withdrawals and dropouts, data collection, selection bias, and confounders. Based on these, an overall rating was provided. Subsequently, we considered the influence of studies with weak methodologic quality on summary effect sizes.

Meta-analysis was carried out using RevMan version 5.4 software (Cochrane Collaboration).<sup>20</sup> We classified the studies according to tobacco type (with smoke or smokeless) and exposure type (ever vs never use or current use vs current nonuse or past use vs never use) for each treatment outcome and performed meta-analysis for groups that included two or more studies. We limited the meta-analysis to our two primary outcomes

(TB recurrence or relapse and mortality during treatment) and narratively synthesized the additional outcomes because they largely were covered in two reviews published in 2020.<sup>13,14</sup>

For the meta-analyses, we used the number of individuals exposed, number of individuals unexposed, and events observed in both those groups as reported in the individual studies to calculate risk ratios (RRs) and 95% CIs. These estimates were pooled using random effects models and are presented as forest plots. Heterogeneity of included studies was assessed using the  $I^2$  statistic, and the reasons for heterogeneity were explored through subgroup analyses according to study design, quality, and presence of comorbidities among participants. In addition, sensitivity analyses were performed by removing (1) studies that included people with DRTB and (2) studies that included people with retreatment TB. Finally, the presence of publication bias was assessed based on funnel plots, and Grading of Recommendations, Assessment, Development, and Evaluations (GRADE) assessments were used to rate the certainty of evidence for the primary outcomes.<sup>21</sup> We did not explore the dose-response effect of duration and amount of tobacco use on TB outcomes.

## Results

Our searches retrieved 1,249 records. After removing duplications, 1,131 records were screened on titles and abstracts, and 887 records were excluded. Of the remaining 244 records, we retrieved and screened 243

full texts and excluded an additional 116 records (Fig 1, e-Appendix 3).

In total, 127 records were included (Table 2).<sup>22–148</sup> They comprised 123 unique studies; four studies were

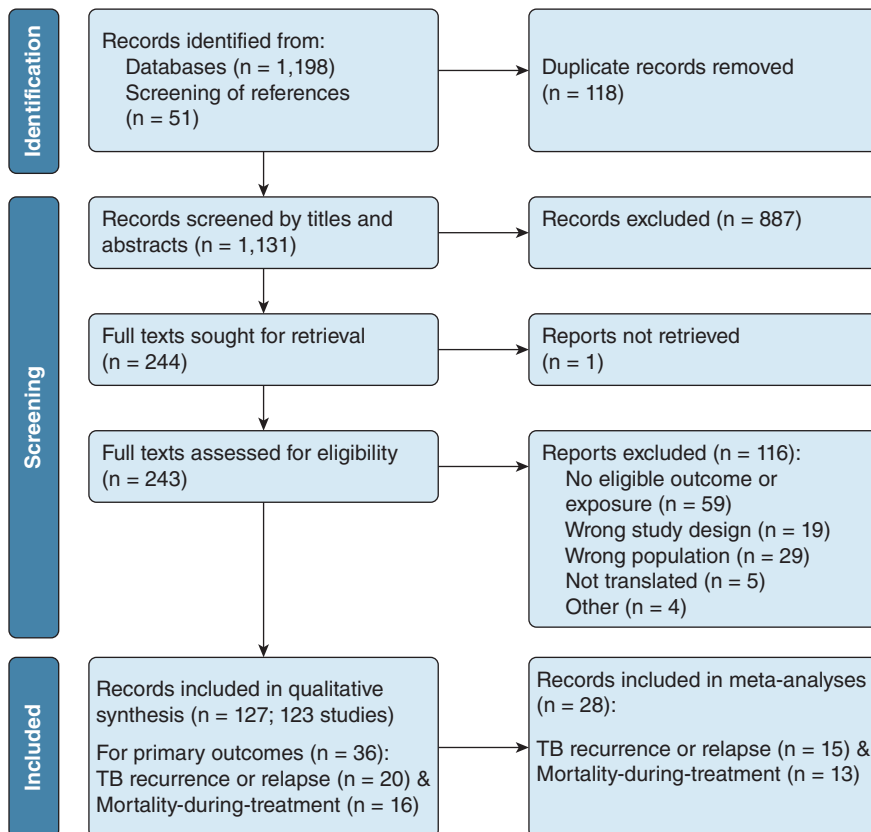


Figure 1 – Preferred Reporting Items for Systematic Reviews and Meta-Analyses flow chart showing study selection.

TABLE 2 ] Summary of Included Studies

Reference	Study Year	Country, Region	Study Design	Sample Size	Age; Male Sex (%); Habits, Comorbidities	PTB/EPTB; DRTB; Retreatment	Exposure(s)	Outcome(s)	Study Quality
Liu et al <sup>22</sup> (1998)	1989–1991	China, WPR	Retrospective cohort	1 million	35+; NR; NR	PTB; yes; NR	Current tobacco use	TB mortality	Strong
Lam et al <sup>23</sup> (2001)	1997–1999	Hong Kong, WPR	Case-control	40,561	35+; 47.4%; NR	PTB; NR; NR	Past tobacco use	TB mortality	Moderate
Leung et al <sup>24</sup> (2002) Leung et al <sup>25</sup> (2003)	1996	Hong Kong, WPR	Retrospective cohort	893	16+; > 68.0%; Chronic disease	PTB and EPTB; yes (4.9%); yes	Ever tobacco use	Unsuccessful, delayed conversion	Moderate
Santha et al <sup>26</sup> (2002)	1999–2000	India, SEAR	Retrospective cohort	676	14-87; 75.0%; Alcohol use	PTB and EPTB; yes; yes	Current tobacco use	Failure, default	Moderate
Gajalakshmi et al <sup>27</sup> (2003)	1995–2000	India, SEAR	Case-control	35,000	25-69; 100%; NR	PTB; yes; yes	Ever tobacco use (cigarette, bidi)	TB mortality	Strong
Salami and Oluboyo <sup>28</sup> (2003)	1991–1999	Nigeria, AFR	Retrospective cohort	1,741	15+; 45.6%; alcohol use, HIV, chronic disease	PTB; NR; no	Current tobacco use	Default	Moderate
Chang et al <sup>29</sup> (2004)	1999–2001	Hong Kong, WPR	Case-control (nested)	408	15+; 86.3%; alcohol and drug use, HIV, hepatitis	PTB; yes; yes	Ever, current, past tobacco use	Default	Strong
Sitas et al <sup>30</sup> (2004)	1994–1998	South Africa, AFR	Case-control	5,340	25+; NR; NR	NR	Ever tobacco use	TB mortality	Strong
Abal et al <sup>31</sup> (2005)	1998–2000	Kuwait, EMR	Prospective cohort	339	Adults; 78.8%; alcohol and drug use, DM	PTB; no; NR	Current tobacco use	Delayed conversion	Moderate
Altet-Gomez et al <sup>32</sup> (2005)	1996–2002	Spain, EUR	Retrospective cohort	13,038	14+; 67.6%; alcohol and drug use, HIV	PTB and EPTB; NR; NR	Current tobacco use	On-treatment mortality, severity	Strong
Balbay et al <sup>33</sup> (2005)	1998–2003	Turkey, EUR	Retrospective cohort	154	16-82; 65.6%; alcohol use	PTB and EPTB; no; yes	Current tobacco use	Nonadherence	Strong
Chandrasekaran et al <sup>34</sup> (2005)	1999–2002	India, SEAR	Prospective cohort	1,406	All ages; 69.5%; alcohol use	PTB; NR; no	Current tobacco use	Default	Moderate

(Continued)

TABLE 2 ] (Continued)

Reference	Study Year	Country, Region	Study Design	Sample Size	Age; Male Sex (%); Habits, Comorbidities	PTB/EPTB; DRTB; Retreatment	Exposure(s)	Outcome(s)	Study Quality
Gupta et al <sup>35</sup> (2005)	1992–1999	India, SEAR	Prospective cohort	99,570	35+; NR; NR	PTB; NR; NR	Ever tobacco use (cigarette, bidi) and smokeless	TB mortality	Strong
Thomas et al <sup>36</sup> (2005)	2000–2001	India, SEAR	Prospective cohort	534	All ages; 71.2%; alcohol use	PTB; yes (5.6%); no	Current tobacco use	Recurrence or relapse	Strong
Kolappan et al <sup>37</sup> (2006)	2000–2003	India, SEAR	Retrospective cohort	1,800	15+; 100%; alcohol use	PTB and EPTB; yes; yes	Current tobacco use (cigarette, bidi)	All-cause mortality	Moderate
Babb et al <sup>38</sup> (2007)	2003–2004	South Africa, AFR	Retrospective cohort	220	18-65; NR; excluded people with HIV	PTB; no; no	Current tobacco use	Delayed conversion	Strong
Cacho et al <sup>39</sup> (2007)	1992–2004	Spain, EUR	Retrospective cohort	645	Mean 38.6 ± 9.5; 75.0%; alcohol and drug use, HIV	PTB and EPTB; NR; NR	Current tobacco use	Recurrence/ relapse	Strong
Guler et al <sup>40</sup> (2007)	2000–2005	Turkey, EUR	Retrospective cohort	306	17-85; 63.1%; DM, excluded people with HIV	PTB; yes; no	Current tobacco use	Delayed conversion	Weak
Jakubowiak et al <sup>41</sup> (2007)	2003	Russia, EUR	Case-control	1,805	16+; 73.0%; alcohol and drug use	PTB; no; no	Current tobacco use	Default	Moderate
Wang et al <sup>42</sup> (2007)	2002–2003	Taiwan, WPR	Retrospective cohort	523	All ages; NR; alcohol use, chronic disease	PTB and EPTB; yes; no	Ever tobacco use	All-cause mortality, failure, default	Strong
d’Arc Lyra Batista et al <sup>43</sup> (2008)	2001–2006	Brazil, AMR	Prospective cohort	711	13+; 64.5%; alcohol use, HIV	PTB and EPTB; NR; no	Current tobacco use	Recurrence or relapse	Strong
Jha et al <sup>44</sup> (2008)	2001–2003	India, SEAR	Case-control	152,058	30-69; NR; NR	PTB and EPTB; NR; NR	Current tobacco use (cigarette, bidi) and smokeless	TB mortality	Strong

(Continued)

TABLE 2 ] (Continued)

Reference	Study Year	Country, Region	Study Design	Sample Size	Age; Male Sex (%); Habits, Comorbidities	PTB/EPTB; DRTB; Retreatment	Exposure(s)	Outcome(s)	Study Quality
Pinidiyapathirage et al <sup>45</sup> (2008)	2001–2002	Sri Lanka, SEAR	Prospective cohort	892	All ages; 74.5%; alcohol and drug use	PTB and EPTB; NR; yes	Current tobacco use	Default	Moderate
Vasantha et al <sup>46</sup> (2008)	1999–2004	India, SEAR	Retrospective cohort	3,818	All ages; 73.0%; alcohol use	NR; yes; yes	Current tobacco use	On-treatment mortality	Moderate
Jee et al <sup>47</sup> (2009)	1992–2006	South Korea, WPR	Prospective cohort	1,294,504	30-95; NR; alcohol use	PTB; NR; yes	Current, past tobacco use	Recurrence or relapse, TB mortality	Strong
Jiang et al <sup>48</sup> (2009)	1989–1991	China, WPR	Case-control	64,899	40+; NR; NR	PTB; NR; NR	Ever tobacco use (cigarette, noncigarette)	TB mortality	Strong
Kherad et al <sup>49</sup> (2009)	1999–2002	Switzerland, EUR	Retrospective cohort	252	15-92; 47.0%; alcohol and drug use, HIV	PTB and EPTB; yes; yes	Current tobacco use	Unsuccessful	NA
Kittikraisak et al <sup>50</sup> (2009)	2005–2006	China, WPR	Prospective cohort	554	18+; 69.0%; alcohol and drug use, 100% HIV	PTB and EPTB; yes; NR	Current tobacco use	Default	Strong
Millet et al <sup>51</sup> (2009)	1995–2005	Spain, EUR	Retrospective cohort	681	Median, 36; 67.7%; alcohol and drug use, HIV	PTB and EPTB; yes; no	Current tobacco use	Recurrence or relapse	Moderate
Metanat et al <sup>52</sup> (2010)	2005–2006	Iran, EMR	Case-control	200	18+; 59.5%; comorbidities excluded	PTB; no; no	Current, past tobacco use	Delayed conversion	Weak
Siddiqui et al <sup>53</sup> (2010)	2007–2008	Ireland, EUR	Retrospective cohort	53	Adults; NR; comorbidities excluded	PTB; no; NR	Ever tobacco use	Delayed conversion	Moderate
Silva et al <sup>54</sup> (2010)	2005–2007	Brazil, AMR	Retrospective cohort	311	All ages; NR; HIV	PTB and EPTB; NR; no	Current tobacco use	On-treatment mortality	Strong
Tabarsi et al <sup>55</sup> (2010)	2003–2009	Iran, EMR	Retrospective cohort	1,897	Mean, 50.2 ± 21.1; 51.3%; HIV	PTB; yes; yes	Current tobacco use	On-treatment mortality	NA
Vijay et al <sup>56</sup> (2010)	2004–2005	India, SEAR	Case-control (nested)	1,374	15+; NR; alcohol use	PTB; NR; no	Current tobacco use	Default	Strong

(Continued)

TABLE 2 ] (Continued)

Reference	Study Year	Country, Region	Study Design	Sample Size	Age; Male Sex (%); Habits, Comorbidities	PTB/EPTB; DRTB; Retreatment	Exposure(s)	Outcome(s)	Study Quality
Dujaili et al <sup>57</sup> (2011)	2006–2008	Malaysia, WPR	Retrospective cohort	524	15+; 70.4%; alcohol and drug use, chronic disease	NR; NR; no	Ever tobacco use	On-treatment mortality, failure, default	Strong
Garcia-Garcia et al <sup>58</sup> (2011)	2006–2007	Spain, EUR	Prospective cohort	1,490	18+; 61.7%; alcohol and drug use, HIV	PTB and EPTB; yes; yes	Ever tobacco use	All-cause mortality, default	NA
Maruza et al <sup>59</sup> (2011)	2007–2009	Brazil, AMR	Prospective cohort	273	18-67; 69.7%; alcohol and drug use, 100% HIV	PTB and EPTB; NR; NR	Current, past tobacco use	Default	Strong
Nik Mahdi et al <sup>60</sup> (2011)	2006–2007	Malaysia, WPR	Retrospective cohort	472	Mean 45.0 ± 17.9; 66.9%; HIV, DM	PTB; NR; Yes	Current tobacco use	Unsuccessful	Moderate
Solliman et al <sup>61</sup> (2011)	2008–2009	Libya, EMR	Retrospective cohort	327	NR	PTB; NR; NR	Current tobacco use	Unsuccessful	NA
Tachfouti et al <sup>62</sup> (2011) Tachfouti et al <sup>63</sup> (2013)	2004–2009	Morocco, EMR	Prospective cohort	1,039	18-79; 95.7%; alcohol use	PTB and EPTB; NR; no	Current tobacco use	Failure, default	Strong
Anaam et al <sup>64</sup> (2012)	2007–2008	Yemen, EMR	Case-control (nested)	220	15+; 58.0%; Khat use, DM	PTB; NR; no	Current tobacco use	Recurrence or relapse	Moderate
Chiang et al <sup>65</sup> (2012)	2001–2003	Taiwan, WPR	Retrospective cohort	302	Adults; 68.9%; chronic disease, not HIV	PTB and EPTB; no; no	Ever tobacco use	Unsuccessful	Strong
Feng et al <sup>66</sup> (2012)	2007–2009	Taiwan, WPR	Prospective cohort	1,059	Mean, 64.7 ± 19.2; 77.3%; HIV, chronic disease	PTB and EPTB; yes; no	Current tobacco use	On-treatment mortality, delayed conversion	Moderate
Lisha et al <sup>67</sup> (2012)	2008–2010	India, SEAR	Retrospective cohort	224	15-80; 81.0%; alcohol and drug use, DM	PTB; yes; no	Current tobacco use	Recurrence, all-cause mortality, failure, default	NA
Tabarsi et al <sup>68</sup> (2012)	2004–2007	Iran, EMR	Retrospective cohort	111	22-70; 96.3%; alcohol and drug use, 100% HIV	PTB and EPTB; NR; yes	Current tobacco use	Unsuccessful, all-cause mortality	Moderate

(Continued)

TABLE 2 ] (Continued)

Reference	Study Year	Country, Region	Study Design	Sample Size	Age; Male Sex (%); Habits, Comorbidities	PTB/EPTB; DRTB; Retreatment	Exposure(s)	Outcome(s)	Study Quality
Visser et al <sup>69</sup> (2012)	2005–2008	South Africa, AFR	Prospective cohort	113	22-43; 69.9%; alcohol use, HIV	PTB; yes; no	Ever tobacco use	Delayed conversion	Strong
Alavi-Naini et al <sup>70</sup> (2013)	2002–2011	Iran, EMR	Retrospective cohort	715	15+; 52.4%; alcohol and drug use, HIV, chronic disease	PTB; NR; yes	Current tobacco use	On-treatment mortality	Strong
Bonacci et al <sup>71</sup> (2013)	1995–2010	Mexico, AMR	Prospective cohort	1,062	15+; 59.0%; alcohol and drug use, DM	PTB; yes; yes	Current tobacco use	Unsuccessful, recurrence or relapse	Strong
Maciel et al <sup>72</sup> (2013)	2002–2006	Brazil, AMR	Case-control (nested)	293	18-60; 66.0%; alcohol use	PTB; no; no	Current, past tobacco use	Delayed conversion	Strong
Mnisi et al <sup>73</sup> (2013)	2007–2010	South Africa, AFR	Retrospective cohort	202	21-72; 98.0%; HIV	PTB and EPTB; yes; yes	Current tobacco use	Unsuccessful	Moderate
Reddy et al <sup>74</sup> (2013)	2009	India, SEAR	Prospective cohort	413	15+; 81.3%; alcohol use, HIV, DM	PTB; NR; no	Current tobacco use	On-treatment mortality, failure, default	Moderate
Reed et al <sup>75</sup> (2013)	NR	South Korea, WPR	Prospective cohort	657	20+; 84.0%; alcohol use, DM	PTB; yes; yes	Current tobacco use	TB mortality	Strong
Slama et al <sup>76</sup> (2013)	2009–2010	Morocco, EMR	Case-control	320	15+; 80.6%; alcohol use	PTB and EPTB; NR; yes	Current tobacco use	Default	Strong
Ahmad and Velhal <sup>77</sup> (2014)	2006–2007	India, SEAR	Prospective cohort	281	All ages; 74.5%; NR	PTB; NR; no	Current tobacco use and smokeless	Nonadherence	Moderate
Alo et al <sup>78</sup> (2014)	2010–2012	Fiji, WPR	Retrospective cohort	395	All ages; 57.2%; DM, hypertension	PTB and EPTB; NR; yes	Current tobacco use	Unsuccessful	Moderate
Cherkaoui et al <sup>79</sup> (2014)	2010–2011	Morocco, EMR	Case-control	277	Adults; 66.0%; alcohol and drug use, HIV, DM	PTB and EPTB; yes; yes	Current tobacco use	Default	Strong

(Continued)

TABLE 2 ] (Continued)

Reference	Study Year	Country, Region	Study Design	Sample Size	Age; Male Sex (%); Habits, Comorbidities	PTB/EPTB; DRTB; Retreatment	Exposure(s)	Outcome(s)	Study Quality
Choi et al <sup>80</sup> (2014)	2005–2012	South Korea, WPR	Prospective cohort	663	20+; 84.9%; alcohol and drug use, DM	PTB; yes; yes	Current tobacco use	Unsuccessful, default	Moderate
de Boer et al <sup>81</sup> (2014)	2007–2009	Brazil, AMR	Prospective cohort	89	NR; 85.4%; alcohol and drug use, HIV, DM	PTB; no; NR	Current, past tobacco use	Delayed conversion	Strong
Ibrahim et al <sup>82</sup> (2014) Ibrahim et al <sup>83</sup> (2015)	2011–2012	Nigeria, AFR	Cross-sectional	378	15+; 60.6%; Alcohol use, HIV	PTB; NR; yes	Current tobacco use	Nonadherence, failure, default	Moderate
Louwagie and Ayo-Yusuf <sup>84</sup> (2014)	2011–2013	South Africa, AFR	Cross-sectional	1,926	18+; 52.3%; alcohol and drug use, HIV	NR	Current tobacco use	Recurrence or relapse	Moderate
Lucenko et al <sup>85</sup> (2014)	2006–2010	Latvia, EUR	Retrospective cohort	2,476	15+; 69.0%; alcohol and drug use, HIV	PTB and EPTB; no; no	Current tobacco use	Unsuccessful	Moderate
Pefura-Yone et al <sup>86</sup> (2014)	2009–2012	Cameroon, AFR	Prospective cohort	953	15+; NR; alcohol and drug use, HIV, DM	PTB; yes; NR	Current tobacco use	Delayed conversion	Strong
Przybylski et al <sup>87</sup> (2014)	2001–2010	Poland, EUR	Retrospective cohort	2,025	16-98; 67.0%; alcohol and drug use, HIV	PTB and EPTB; NR; no	Current tobacco use	Unsuccessful, adverse reaction to TB drugs	Moderate
Yen et al <sup>88</sup> (2014)	2005–2011	Taiwan, WPR	Retrospective cohort	5,567	18+; 62.9%; alcohol use, HIV, cancer	PTB and EPTB; NR; NR	Current tobacco use	Recurrence or relapse	Strong
Chuang et al <sup>89</sup> (2015)	2010–2012	Taiwan, WPR	Case-control	359	16+; > 66.0%; Alcohol use	PTB; NR; NR	Current, past tobacco use	Delayed conversion	Strong
Driessche et al <sup>90</sup> (2015)	NR	DRC, AFR	Prospective cohort	533	Median, 38; 39.1%; alcohol and drug use, 100% HIV	PTB and EPTB; NR; NR	Ever tobacco use	On-treatment mortality, default, unsuccessful	Strong
Gegia et al <sup>91</sup> (2015)	2011–2013	Georgia, EUR	Prospective cohort	524	18+; 87.2%; alcohol and drug use, HIV	PTB; yes; NR	Current, past tobacco use and smokeless	Unsuccessful	Strong

(Continued)

TABLE 2 ] (Continued)

Reference	Study Year	Country, Region	Study Design	Sample Size	Age; Male Sex (%); Habits, Comorbidities	PTB/EPTB; DRTB; Retreatment	Exposure(s)	Outcome(s)	Study Quality
Kanda et al <sup>92</sup> (2015)	2000—2002	Japan, WPR	Retrospective cohort	86	20-80; 69.8%; alcohol use, DM, excluded people with HIV	PTB; no; no	Ever tobacco use	Delayed conversion	Strong
Khan et al <sup>93</sup> (2015)	2009—2010	Pakistan, EMR	Retrospective cohort	472	15+; 50.4%; HIV, DM, hepatitis	PTB and EPTB; NR; NR	Current tobacco use	Failure	Moderate
Leung et al <sup>94</sup> (2015)	2001—2012	Hong Kong, WPR	Prospective cohort	16,345	All ages; NR; alcohol and drug use, HIV, DM	PTB and EPTB; yes (3.1%); yes	Current, past tobacco use	Unsuccessful, all-cause mortality, default, delayed conversion, recurrence	Strong
Liew et al <sup>95</sup> (2015)	2012—2013	Malaysia, WPR	Retrospective cohort	21,582	All ages; 65.1%; HIV, DM	PTB and EPTB; yes (0.3%); yes	Current tobacco use	Unsuccessful, all-cause mortality	Strong
Mahishale et al <sup>96</sup> (2015)	2012—2013	India, SEAR	Prospective cohort	2,350	15+; 74.8%; comorbidities excluded	PTB; NR; no	Current, past tobacco use (bidi, cigarette)	Recurrence or relapse	Strong
Moosazadeh et al <sup>97</sup> (2015)	2002—2013	Iran, EMR	Retrospective cohort	1,271	15+; 56.2%; DM	PTB; NR; NR	Current tobacco use	Recurrence or relapse	Strong
Roy et al <sup>98</sup> (2015)	2009—2011	India, SEAR	Case-control	158	Median 40; 63.3%; alcohol use	PTB; NR; no	Current tobacco use	Default	Strong
Yamana et al <sup>99</sup> (2015)	2010—2013	Japan, WPR	Retrospective cohort	877	All ages; 64.5%; chronic disease	PTB; yes; no	Current tobacco use	On-treatment mortality	Strong
Ahmad et al <sup>100</sup> (2016)	2015—2016	Pakistan, EMR	Case-control	332	> 10 y; 100%; comorbidities excluded	PTB; yes; no	Ever tobacco use (any form)	Recurrence or relapse	Strong
Ajili et al <sup>101</sup> (2016)	NR	Tunisia, EMR	Retrospective cohort	355	All ages; NR; alcohol and drug use, chronic disease	PTB; NR; NR	Current tobacco use	Delayed conversion	NA

(Continued)

TABLE 2 ] (Continued)

Reference	Study Year	Country, Region	Study Design	Sample Size	Age; Male Sex (%); Habits, Comorbidities	PTB/EPTB; DRTB; Retreatment	Exposure(s)	Outcome(s)	Study Quality
Rathee et al <sup>102</sup> (2016)	2010–2011	India, SEAR	Prospective cohort	101	18-65; 65.3%; NR	PTB; no; NR	Current, past tobacco use (cigarette, bidi)	Default	Moderate
Rodrigo et al <sup>103</sup> (2016)	2006–2013	Spain, EUR	Prospective cohort	5,182	18+; 62.0%; alcohol and drug use, HIV	PTB and EPTB; yes (6.9%); NR	Current tobacco use	On-treatment mortality	Moderate
Veerakumar et al <sup>104</sup> (2016)	2013–2014	India, SEAR	Cross-sectional	235	15+; 79.6%; alcohol use	PTB; NR; yes	Current tobacco use and smokeless	Unsuccessful	Strong
Yen et al <sup>105</sup> (2016)	2011–2012	Taiwan, WPR	Retrospective cohort	1,608	18+; 67.5%; alcohol use, HIV, chronic disease	PTB and EPTB; NR; yes	Current, past tobacco use	All-cause mortality	Strong
Altet et al <sup>106</sup> (2017)	2013–2014	Spain, EUR	Prospective cohort	525	Mean, 34.0 ± 13.2; 62.1%; alcohol and drug use, HIV	PTB; yes; NR	Current tobacco use	Delayed conversion	Strong
Balian et al <sup>107</sup> (2017)	2014–2016	Armenia, EUR	Retrospective cohort	992	Mean, 42.0 ± 17.5; 74.8%; alcohol use, HIV	PTB and EPTB; no; no	Current tobacco use	Unsuccessful	Strong
Jaber et al <sup>108</sup> (2017)	2014–2015	Yemen, EUR	Prospective cohort	273	15+; 54.9%; Khat use, chronic disease	PTB; no; no	Current tobacco use	Unsuccessful, prolonged treatment duration	Strong
Kalema et al <sup>109</sup> (2017)	2008–2013	Uganda, AFR	Retrospective cohort	234	18+; 58.6%; HIV	PTB; yes (3.0%); no	Ever tobacco use	Recurrence or relapse	Weak
Musteikiene et al <sup>110</sup> (2017)	2015–2016	Lithuania, EUR	Prospective cohort	52	Adults; 76.9%; alcohol use, comorbidities excluded	PTB; no; no	Current tobacco use	Delayed conversion	Strong

(Continued)

TABLE 2 ] (Continued)

Reference	Study Year	Country, Region	Study Design	Sample Size	Age; Male Sex (%); Habits, Comorbidities	PTB/EPTB; DRTB; Retreatment	Exposure(s)	Outcome(s)	Study Quality
Nagu et al <sup>111</sup> (2017)	2014–2015	Tanzania, AFR	Prospective cohort	253	18+; 66.4%; alcohol and drug use, HIV, DM	PTB and EPTB; no; NR	Ever tobacco use	On-treatment mortality	Strong
Shamaei et al <sup>112</sup> (2017)	2009–2012	Iran, EMR	Case-control	447	14+; > 51.0%; alcohol and drug use, HIV, chronic disease	PTB and EPTB; yes; yes	Current tobacco use	Recurrence or relapse	Moderate
Tola et al <sup>113</sup> (2017)	2014	Ethiopia, AFR	Cross-sectional	698	18-90; 57.4%; alcohol and drug use, HIV	PTB and EPTB; yes (9.6%); yes	Current tobacco use	Nonadherence	Weak
Cailleaux-Cezar et al <sup>114</sup> (2018)	2004–2012	Brazil, AMR	Retrospective cohort	174	Adults; 66.0%; alcohol use, DM, cancer, chronic disease	PTB; no; no	Current tobacco use	Unsuccessful, delayed conversion	Strong
Dizaji et al <sup>115</sup> (2018)	2005–2015	Iran, EMR	Retrospective cohort	2,299	Adults; 50.0%; alcohol and drug use, HIV, chronic disease	PTB and EPTB; NR; no	Current tobacco use	TB mortality	Moderate
Madeira et al <sup>116</sup> (2018)	2014	Brazil, AMR	Case-control	478	18+; 59.2%; alcohol and drug use, HIV, DM	PTB; no; yes	Ever tobacco use	Nonadherence	Strong
Mukhtar and Butt <sup>117</sup> (2018)	2013–2014	Pakistan, EMR	Prospective cohort	614	15+; 51.0%; alcohol and drug use, DM	PTB; no; no	Current tobacco use	Unsuccessful	Strong
Rosser et al <sup>118</sup> (2018)	1994–2014	UK, EUR	Case-control (nested)	246	Adults; 51.2%; alcohol use, chronic disease	PTB and EPTB; yes; no	Current tobacco use	Recurrence or relapse	Strong
Aguilar et al <sup>119</sup> (2019)	2007–2015	Brazil, AMR	Case-control	284	15+; 63.3%; alcohol use	PTB; no; yes	Ever, current, past tobacco use	Failure	Strong

(Continued)

**TABLE 2 ] (Continued)**

Reference	Study Year	Country, Region	Study Design	Sample Size	Age; Male Sex (%); Habits, Comorbidities	PTB/EPTB; DRTB; Retreatment	Exposure(s)	Outcome(s)	Study Quality
Azeez et al <sup>120</sup> (2019)	2013–2015	South Africa, AFR	Retrospective cohort	910	Adults; > 58.0%; alcohol and drug use, HIV	PTB; yes; no	Current tobacco use	On-treatment mortality	Strong
Castro et al <sup>121</sup> (2019)	2016	Brazil, AMR	Cross-sectional	180	All ages; 75.6%; alcohol and drug use, 100% HIV	PTB and EPTB; yes (2.9%); no	Current tobacco use	TB mortality, default	Weak
Gupta et al <sup>122</sup> (2019)	2017–2018	India, SEAR	Prospective cohort	72	18-80; 52.8%; alcohol use, chronic disease	PTB and EPTB; no; no	Ever tobacco use (cigarette, bidi) and smokeless	Unsuccessful	Moderate
Gupte et al <sup>123</sup> (2019) Thomas et al <sup>124</sup> (2019)	2014–2017	India, SEAR	Prospective cohort	455	18+; 65.0%; alcohol use, HIV, depression	PTB; no; no	Current, past tobacco use (cigarette, bidi)	Unsuccessful, all-cause mortality, failure, recurrence or relapse	Moderate
Hameed et al <sup>125</sup> (2019)	2018–2019	Pakistan, EMR	Cross-sectional	170	13-80; 54.1%; HIV, chronic disease	PTB; no; yes	Current tobacco use	On-treatment mortality	Moderate
Ma et al <sup>126</sup> (2019)	2008–2011	China, WPR	Retrospective cohort	1,256	15+; 72.7%; alcohol use	PTB; no; no	Current, past tobacco use	Unsuccessful, on-treatment mortality, failure, delayed conversion, severity	Moderate
Mathur et al <sup>127</sup> (2019)	2016–2018	India, SEAR	Prospective cohort	187	All ages; 59.9%; alcohol and drug use, HIV	PTB; NR; no	Current tobacco use	Recurrence or relapse	NA
Nakao et al <sup>128</sup> (2019)	2008–2016	Japan, WPR	Retrospective cohort	137	All ages; 60.5%; chronic disease	PTB; yes (5.8%); NR	Ever tobacco use	Severity	Moderate
Paunikar et al <sup>129</sup> (2019)	2015	India, SEAR	Retrospective cohort	440	NR; 56.6%; alcohol and drug use, HIV	PTB and EPTB; NR; yes	Current tobacco use	Default	Moderate

(Continued)

TABLE 2 ] (Continued)

Reference	Study Year	Country, Region	Study Design	Sample Size	Age; Male Sex (%); Habits, Comorbidities	PTB/EPTB; DRTB; Retreatment	Exposure(s)	Outcome(s)	Study Quality
Reimann et al <sup>130</sup> (2019)	2012–2017	Germany, EUR	Retrospective cohort	247	All ages; 71.3%; alcohol and drug use, HIV, chronic disease	PTB; yes; NR	Ever tobacco use	Delayed conversion, Severity	Strong
Sharma et al <sup>131</sup> (2019)	2015–2016	India, SEAR	Case-control	741	18+; 60.0%; alcohol and drug use, HIV, DM	PTB; NA; yes	Current tobacco use and smokeless	Drug resistance	Strong
Wardani and Wahono <sup>132</sup> (2019)	2016	Indonesia, WPR	Case-control	93	All ages; 50.0%; DM	PTB; NR; NR	Current tobacco use	Delayed conversion	Strong
Ajema et al <sup>133</sup> (2020)	2017	Ethiopia, AFR	Cross-sectional	249	15+ years; alcohol and drug use, HIV	PTB and EPTB; NR; yes	Current tobacco use	Nonadherence	Moderate
Bezerra et al <sup>134</sup> (2020)	2012–2019	Brazil, AMR	Prospective cohort	148	18+; 65.0%; alcohol and drug use, HIV	PTB and EPTB; NR; yes	Ever tobacco use	Default	Strong
Khan et al <sup>135</sup> (2020)	2006–2009	Malaysia, WPR	Retrospective cohort	9,337	All ages; 69.0%; alcohol and drug use, chronic disease	PTB and EPTB; NR; yes	Ever tobacco use	On-treatment mortality, default, nonadherence	Strong
Pore et al <sup>136</sup> (2020)	2016–2017	India, SEAR	Cross-sectional	88	18-70; 77.3%; alcohol use	NR; yes (1.1%); yes	Current tobacco use and smokeless	Nonadherence	NA
Sembiah et al <sup>137</sup> (2020)	2014–2017	India, SEAR	Prospective cohort	662	18+; 53.2%; alcohol use, DM	PTB and EPTB; NR; yes	Current tobacco use	Unsuccessful	NA
Serpoosh et al <sup>138</sup> (2020)	2010–2018	Iran, EMR	Case-control	286	All ages; > 50.0%; drug use	NR	Current tobacco use	Failure	Moderate
Takasaka et al <sup>139</sup> (2020)	2015–2018	Japan, WPR	Retrospective cohort	79	40+; 100%; alcohol use, chronic disease	PTB; no; NR	Ever tobacco use	Delayed conversion	Moderate

(Continued)

TABLE 2 ] (Continued)

Reference	Study Year	Country, Region	Study Design	Sample Size	Age; Male Sex (%); Habits, Comorbidities	PTB/EPTB; DRTB; Retreatment	Exposure(s)	Outcome(s)	Study Quality
Tok et al <sup>140</sup> (2020)	2014–2017	Malaysia, WPR	Retrospective cohort	97,505	All ages; 64.3%; HIV	PTB and EPTB; no; yes	Current tobacco use	Unsuccessful, all-cause mortality	Strong
Asemahagn <sup>141</sup> (2021)	2019	Ethiopia, AFR	Prospective cohort	282	15+; 59.0%; alcohol use, HIV, DM	PTB; NR; yes	Current tobacco use	Delayed conversion	Strong
Bhatti et al <sup>142</sup> (2021)	2016–2018	Malaysia, WPR	Retrospective cohort	606	18+; 73.4%; HIV, chronic disease	PTB; NR; yes	Ever, current, past tobacco use	Delayed conversion	Strong
Cao et al <sup>143</sup> (2021)	2018–2019	China, WPR	Case-control	1,206	14+; 65.2%; alcohol and drug use, chronic disease	PTB; NR; yes	Current tobacco use	Severity	Strong
Carter et al <sup>144</sup> (2021)	2015–2017	Liberia, AFR	Retrospective cohort	337	14+; 76.3%; alcohol use, HIV, cancer	PTB and EPTB; yes (38.3%); yes (19.0%)	Current, past tobacco use	All-cause mortality	Strong
de Vargas et al <sup>145</sup> (2021)	2018	Brazil, AMR	Prospective cohort	92	18+; 57.6%; alcohol and drug use, HIV	PTB; NR; NR	Current tobacco use	Unsuccessful	Moderate
Kassim et al <sup>146</sup> (2021)	2016–2017	Somalia, AFR	Cross-sectional	400	15+; 65.5%; HIV, DM	PTB and EPTB; NR; yes	Current tobacco use	Unsuccessful	Moderate
Lin et al <sup>147</sup> (2021)	2010–2018	China, WPR	Prospective cohort	634	14+; 69.9%; NR	PTB and EPTB; NR; no	Current, past tobacco use	Recurrence or relapse	Strong
Mokti et al <sup>148</sup> (2021)	2013–2018	Malaysia, WPR	Retrospective cohort	2,641	All ages; 60.2%; HIV, DM	PTB; no; yes	Current tobacco use	Delayed conversion	Strong

AFR = African region; AMR = American region; DM = diabetes mellitus; DRC = Democratic Republic of Congo; DRTB = drug-resistant TB; EMR = Eastern Mediterranean region; EPTB = extrapulmonary TB; EUR = European region; NA = not applicable; NR = not reported; PTB = pulmonary TB; SEAR = South-East Asian region; WPR = Western Pacific region.

reported in two publications each.<sup>24,25,62,63,82,83,123,124</sup> For the two primary outcomes, we included 36 studies (20 on recurrence or relapse<sup>36,39,43,47,51,64,67,71,84,88,94,96,97,100,109,112,118,123,127,147</sup> and 16 on mortality during treatment.<sup>32,54,55,57,66,70,74,90,95,99,103,111,120,125,126,135</sup>

However, data from eight studies could not be pooled (five on recurrence or relapse<sup>39,47,67,123,127</sup> and three on mortality<sup>55,66,90</sup>) because the numbers required for computing RRs were not reported. Therefore, 15 studies were included in the TB recurrence or relapse meta-analyses and 13 studies were included in the mortality during treatment meta-analyses (e-Table 1).

The studies were published from 1998 through 2021, covering data from 1989 and with regular publications from 2005 onward. Studies were from all World Health Organization regions: Western Pacific, n = 33, South-East Asian, n = 24; Eastern Mediterranean, n = 20; African, n = 17; European, n = 18; and the Americas, n = 13. The study designs included 91 cohort, 25 case-control, and nine cross-sectional studies, with wide variations in sample size ranging from 52 to > 1 million research participants.

The participants comprised different age groups, with “all ages” included in 21 studies. Most studies (n = 90) included participants older than 15 years, whereas information on age was not reported in three studies. The proportion of male participants was higher than that of female participants in most studies. Eighty-three studies included individuals who used alcohol in their sample, and a smaller number (n = 47) also reported drug use. Among studies that reported comorbidities, HIV, diabetes, and kidney and liver diseases were the most common. Three studies excluded people with HIV, whereas five excluded participants with any comorbidities. The type of TB was not specified in six studies, both pulmonary and extrapulmonary presentations were covered in 50 studies, whereas the remaining studies were limited to just those with pulmonary TB. A total of 41 studies reported a mix of drug-susceptible TB and DRTB, and 46 studies reported a mix of new and retreatment presentations.

Regarding tobacco exposure, 27 studies reported ever tobacco use (vs never tobacco use), 99 studies reported current tobacco use (vs currently not using tobacco), and 19 studies reported former tobacco use (vs never tobacco use). Of these, eight studies specified bidi use in addition to cigarettes and one study mentioned the

inclusion of all forms of tobacco use. Eight studies also reported ST use: two on ever use (vs never use) and six on current use (vs no current use). Regarding treatment outcomes, we found recurrence or relapse (n = 20), mortality during treatment (n = 16), all-cause mortality (n = 11), TB mortality (n = 11), default (n = 27), failure (n = 12), unsuccessful treatment (combined mortality, default, and failure; n = 28), delayed sputum conversion (n = 25), treatment nonadherence (n = 8), disease severity (n = 5), and drug resistance development (n = 1). The overall rating on the risk-of-bias assessments was strong for 68 studies, moderate for 41 studies, and weak for five studies (e-Table 2). Risk of bias was not assessed for the remaining nine studies because we could not extract any results from them.

### *TB Recurrence or Relapse*

Fifteen studies provided the necessary data to be pooled in at least one of the three meta-analyses: five for ever using tobacco,<sup>94,96,100,109,147</sup> 13 for current tobacco use,<sup>36,43,51,64,71,84,88,94,96,97,112,118,147</sup> and three for former tobacco use<sup>94,96,147</sup> (some studies reported on more than one exposure). No studies on ST use were found. Compared with never or no tobacco use, the risk of TB recurrence or relapse was found to be higher with ever tobacco use (pooled RR, 1.78; 95% CI, 1.31-2.43;  $I^2 = 85\%$ ), current tobacco use (RR, 1.95; 95% CI, 1.59-2.40;  $I^2 = 72\%$ ), and former tobacco use (RR, 1.84; 95% CI, 1.21-2.80;  $I^2 = 74\%$ ). All three associations were statistically significant and showed a high degree of heterogeneity (Fig 2A-C). Subgroup analyses showed that variations in study design, quality, and presence of comorbidities could explain some of the heterogeneity, although substantial unexplained heterogeneity within each of these subgroups remained (Table 3); removing the studies that included people with DRTB and retreatment TB did not change the overall findings (e-Fig 1A-M). Funnel plots appeared generally symmetrical, suggesting minimal publication bias (e-Fig 2A-C). The GRADE assessments for all three meta-analyses were very low (e-Fig 3A-C).

### *Mortality During TB Treatment*

Of the 13 studies, four provided estimates for ever using tobacco vs never using tobacco,<sup>57,111,126,135</sup> and nine provided estimates for current tobacco use vs no tobacco use<sup>32,46,54,70,74,99,103,120,125</sup> (Fig 3A, 3B); no estimates were found for former tobacco use or for ST use. Compared with never or no tobacco use, we found increased risk of mortality during treatment associated with ever using tobacco (RR, 1.55; 95% CI, 1.32-1.81;  $I^2 = 0\%$ )

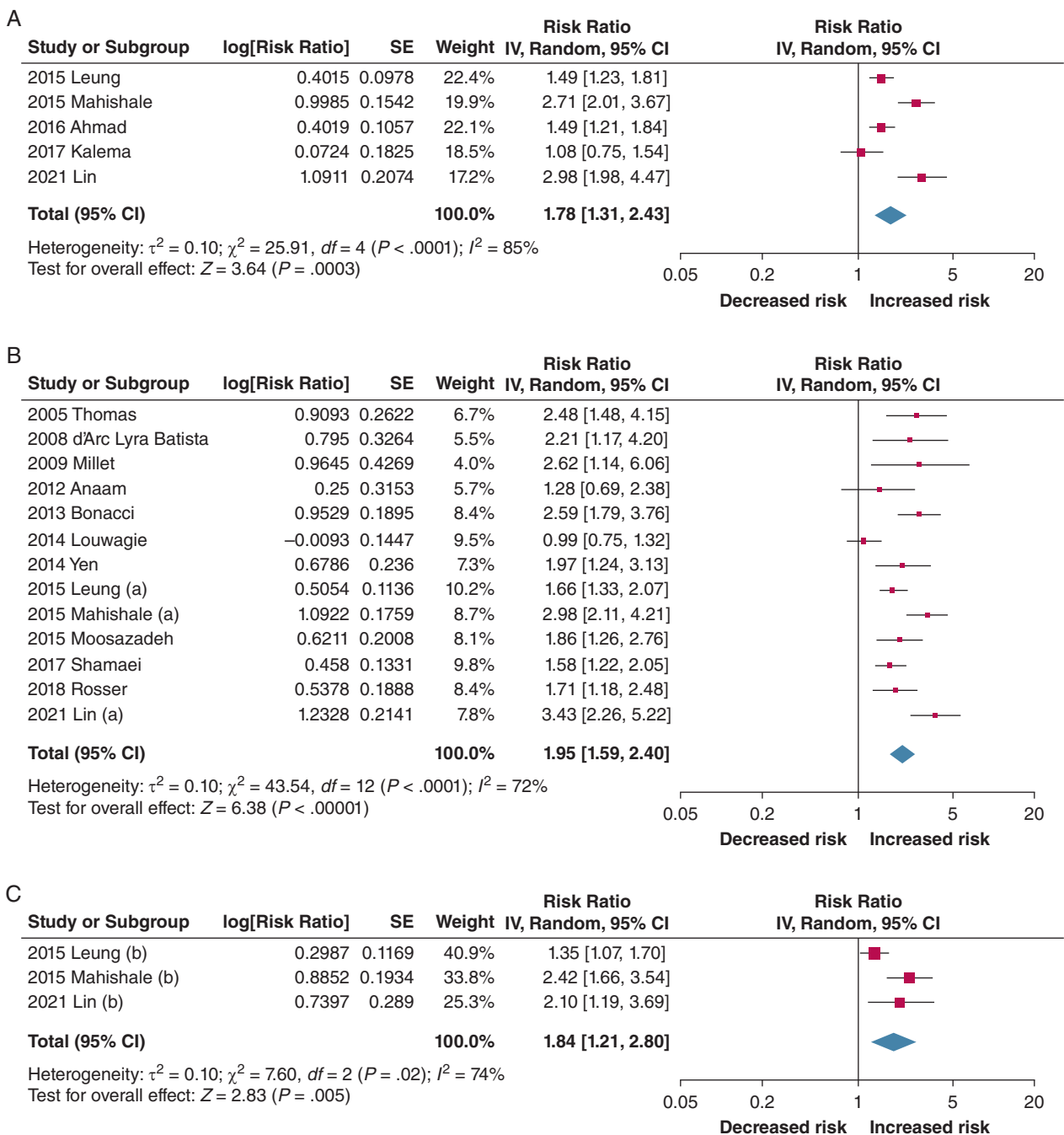


Figure 2 – A, Forest plot showing risk of TB recurrence or relapse risk associated with ever using tobacco. B, Forest plot showing risk of TB recurrence or relapse risk associated with current tobacco use. C, Forest plot showing risk of TB recurrence or relapse risk associated with former tobacco use.

and current tobacco use (RR, 1.51; 95% CI, 1.09-2.10;  $I^2 = 87\%$ ). Only the current tobacco use analysis showed a high degree of heterogeneity, which largely was explained by differences in study design (Table 3). Like recurrence or relapse, removing the studies that included people with DRTB and retreatment TB did not change the overall findings (e-Fig 4A-G). Some funnel plot asymmetry was

observed (e-Fig 5A, 5B), and the GRADE assessment was low for both meta-analyses (e-Fig 6A-6B).

### Secondary Outcomes

In addition to mortality during treatment, we included 11 studies on all-cause mortality among people with TB<sup>37,42,58,67,68,94,95,105,123,140,144</sup> and 11 on TB mortality.<sup>22,23,27,30,35,44,47,48,75,115,121</sup> For all-cause

**TABLE 3 ] Subgroup Analyses Results**

Subgroup	No. of Studies	RR (95% CI)	I <sup>2</sup>	Test for Subgroup Differences	
				χ <sup>2</sup>	P Value
<b>TB recurrence or relapse</b>					
<b>Ever using tobacco</b>					
Study design				3.40	.07
Prospective	3	2.25 (1.39-3.62)	88%		
Retrospective	2	1.31 (0.96-1.80)	59%		
Study quality				6.19	.01
Strong	4	1.99 (1.43-2.77)	85%		
Weak	1	1.08 (0.75-1.54)	NA		
Comorbidities				3.45	.06
Yes	2	1.31 (0.96-1.80)	60%		
No	2	2.25 (1.40-3.60)	87%		
<b>Current tobacco use</b>					
Study design				21.09	< .01
Prospective	6	2.46 (1.88-3.21)	65%		
Retrospective	6	1.71 (1.45-2.01)	0%		
Cross-sectional	1	0.99 (0.75-1.32)	NA		
Study quality				5.41	.02
Strong	9	2.22 (1.84-2.68)	52%		
Weak	4	1.38 (0.97-1.96)	64%		
Comorbidities				13.48	< .01
Yes	10	1.70 (1.41-2.05)	59%		
No	3	3.00 (2.37-3.80)	0%		
<b>Former tobacco use</b>					
Comorbidities				7.42	.01
Yes	1	1.35 (1.07-1.70)	NA		
No	2	2.32 (1.69-2.80)	0%		
<b>Mortality during treatment (current tobacco use)</b>					
Study design				9.87	.01
Prospective	2	1.30 (0.88-1.92)	0%		
Retrospective	6	1.36 (0.94-1.95)	89%		
Cross-sectional	1	5.33 (2.34-12.2)	NA		
Study quality				0.50	.48
Strong	5	1.38 (0.90-2.12)	91%		
Moderate	4	1.77 (1.03-3.03)	38%		
Comorbidities				0.49	.49
Yes	8	1.56 (1.07-2.27)	88%		
No	1	1.29 (0.89-1.87)	NA		

NA = not applicable; RR = risk ratio.

mortality, except for two studies that did not provide risk estimates<sup>58,67</sup> and two studies that found no association with current tobacco use,<sup>94,105</sup> the remaining study reported increased risk with tobacco

use compared with no tobacco use. For TB mortality, all studies reported increased risk with tobacco use and one study report increased risk with ST use in addition (e-Table 3).<sup>35</sup>

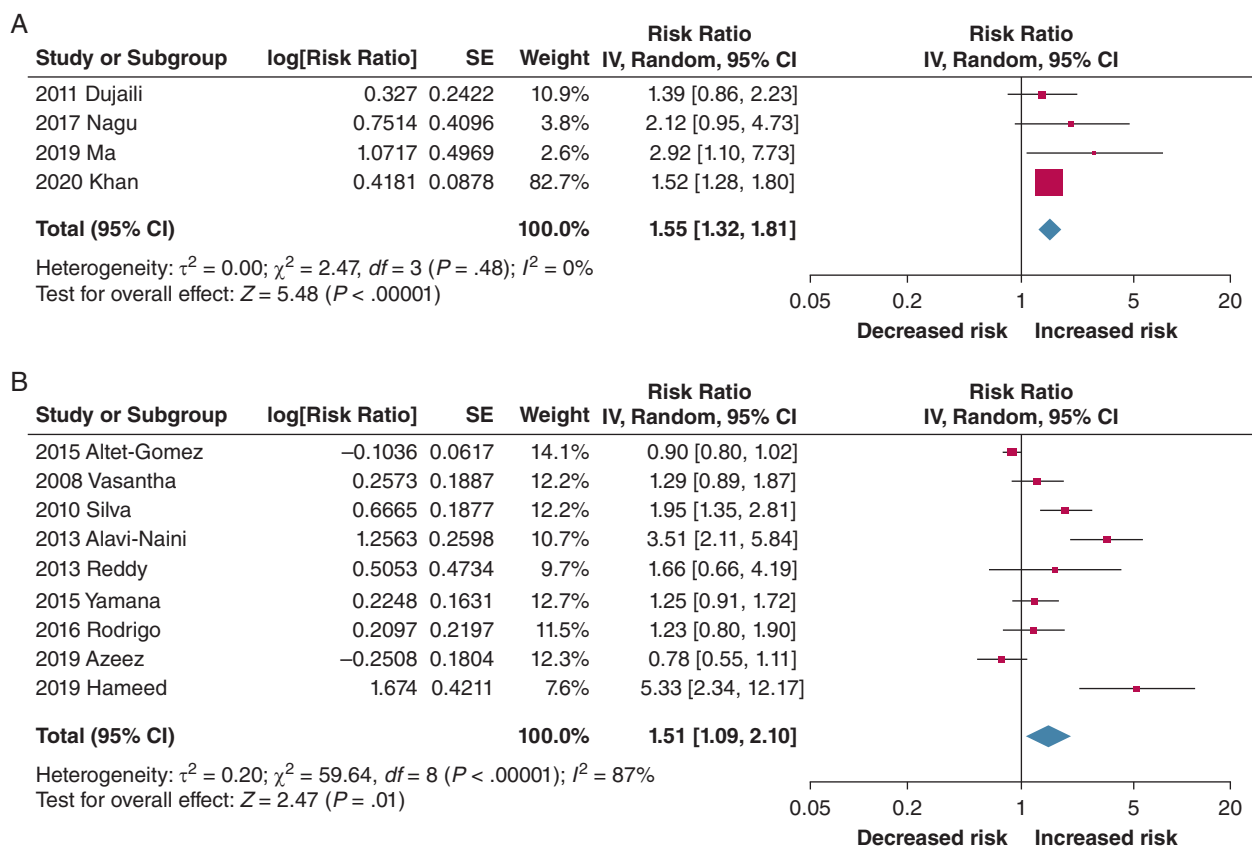


Figure 3 – A, Forest plot showing risk of mortality during treatment associated with ever using tobacco among people with TB. B, Forest plot showing risk of mortality during treatment associated with current tobacco use among people with TB.

Twenty-four of 27 studies on default provided risk estimates for tobacco use.<sup>26,28,29,34,41,42,45,50,56–59,62,67,74,76,79,80,82,90,94,98,102,121,129,134,135</sup> Except for one study,<sup>62</sup> all others reported increased risk with tobacco use compared with never or no tobacco use. Regarding treatment failure, nine of 12 identified studies provided risk estimates, all reporting increased risk with tobacco use.<sup>26,42,52,57,62,74,82,93,119,123,126,138</sup> So-called unsuccessful treatment, which combined any outcome other than cure or completion of treatment, was reported in 28 studies.<sup>24,49,60,61,65,68,71,73,78,80,85,87,90,91,94,95,104,107,108,114,117,122,123,126,137,140,145,146</sup> Of these, the risk could not be extracted from four studies,<sup>24,49,61,137</sup> whereas most of the remaining ones reported increased risk, including three studies that included the use of ST products.<sup>91,104,122</sup>

An association between tobacco use and delayed sputum conversion was reported in 25 studies,<sup>24,31,38,40,52,53,66,69,72,81,86,89,92,94,101,106,110,114,126,130,132,139,141,142,148</sup> and all but one study<sup>40</sup> found increased risks. For treatment nonadherence, effect measures were extracted from seven of eight included studies,<sup>33,77,82,113,116,133,135,136</sup> all reporting increased risk associated with tobacco use, and

one also reporting increased risk associated with ST use.<sup>77</sup> Disease severity was indicated by risk of hospitalization or cavitation in five included studies,<sup>32,126,128,130,143</sup> and all reported increased risk with tobacco use. Finally, one case-control study reported an increased risk of drug resistance developing with tobacco use compared with no tobacco use.<sup>131</sup>

## Discussion

This systematic review identified a substantial number of epidemiologic studies on the association between tobacco use and TB treatment outcomes, and the synthesis clearly showed an increased risk with tobacco use. For the primary outcomes, tobacco use significantly increased the risk of TB recurrence or relapse and mortality during treatment. To our knowledge, the link between tobacco use and TB recurrence or relapse has not been reviewed systematically since 2007,<sup>12</sup> and no meta-analysis has been conducted until now, although the need for it has been highlighted.<sup>149,150</sup> For mortality, previous reviews largely identified TB mortality estimates,<sup>10–12</sup> which identified the association between tobacco use and TB

occurrence, rather than treatment outcomes. A 2010 publication summarized the three 2007 reviews and found them to be consistent on TB mortality,<sup>151</sup> as did the 2014 US Surgeon General's report.<sup>152</sup> Although we included the TB mortality studies and reached similar conclusions, our meta-analysis focused on mortality during treatment, because this provided a more objective indication of mortality as a treatment outcome.

Our review also found increased risks for default, failure, nonadherence, and delayed sputum conversion. Most of these outcomes were covered in two recent meta-analyses,<sup>13,14</sup> both reporting adverse associations with tobacco use. Although our updated searches identified newer studies, we predicted that further meta-analyses would not change the results. Disease severity and development of DRTB were two additional outcomes we included. However, no meta-analyses were conducted because the definition of severity varied across studies, although only one study reported on development of DRTB. Nonetheless, increased risk with tobacco use was found for risk of hospitalization, risk of cavitation, and risk of drug resistance developing.

To our knowledge, the association between ST and TB treatment outcomes has not been reviewed previously. We found eight studies covering unsuccessful treatment, TB mortality, and nonadherence, but the ST-related risks were reported only in six studies. Nonetheless, all but one study found increased risks associated with ST use. Although links between nasal ST (eg, snuff) and increased susceptibility to pulmonary infections have been discussed through mechanisms like decreased mucociliary clearance<sup>153</sup> and altered microbiome,<sup>154</sup> further research to elucidate our findings with other ST products are needed. Similarly, among the tobacco use studies, only a few specified bidi and other noncigarette forms, whereas none reported separate effect measures associated with their use.

The key strengths of this review are its rigorous methodologies, the high quality of included studies, and the use of GRADE for the primary outcomes. The limitations, nonetheless, are as follows. First, because the primary studies presented varied estimates (eg, ORs, hazard ratios, and so forth), we used their numbers to calculate RRs for pooling. This meant that studies that did not report the necessary numbers were left out of the meta-analyses. However, these were few and largely reported increased risks with tobacco use. Only two studies on mortality during treatment reported hazard ratios of < 1.00, but one article did not describe the study

in adequate detail,<sup>55</sup> whereas the effect was not statistically significant in the second study.<sup>66</sup> Our analytical strategy also meant that the effect of important confounders such as age, alcohol, and so forth were not accounted for adequately. The way data were reported on covariates did not allow for their use in metaregression, as originally planned. However, where available within primary studies, we reported adjusted estimates (e-Table 3). Also, when assessing quality, we considered the extent to which studies adjusted for potential confounders.

Another limitation of the meta-analyses is the high heterogeneity: only the ever using tobacco and mortality during treatment analysis showed no heterogeneity. Further, we included studies with combined drug-susceptible TB and DRTB, as well as new and retreatment TB samples. However, we did our best to explain our findings using subgroup and sensitivity analyses. We found that differences in study design, quality, and participant characteristics explained some of the heterogeneity and that removing the studies that included people with DRTB and retreatment TB did not change the overall findings. Additional sources of heterogeneity likely included the geographical spread of studies and the different tobacco products used, but not enough information was available for further exploration. We noted some funnel plot asymmetry in the mortality analyses, suggesting the possibility of publication bias. However, this also may be the result of heterogeneity and chance<sup>155</sup> and was not assessed further. We also could not rule out the possibility of bias from five studies that were excluded because of language restrictions. Finally, the GRADE assessments for all meta-analyses were either very low or low, suggesting that the true effect may differ from our estimates. However, we believe this was explained largely by the observational study designs and the lack of dose-response effects in most included studies.

## Interpretation

Taken together, our findings show increased risk of TB recurrence or relapse and mortality during treatment with tobacco use compared with never or no tobacco use. Tobacco use is also a clear risk factor for other unfavorable TB treatment outcomes, as documented in earlier reviews. Although evidence is limited on ST, it still suggests that we need to be cognizant of the risks associated with its use, especially given its disproportionately high prevalence in LMICs.<sup>156</sup> The integration of tobacco cessation within TB services offers a viable option, particularly in LMICs.<sup>12</sup> A large

proportion of people with TB who use tobacco are willing to stop, and those who stop tobacco use have better treatment success (91% vs 80%;  $P < .001$ ) and lower relapse rates (6% vs 14%;  $P < .001$ ).<sup>157</sup> The results of our review provide additional evidence to invest in these policies and practices to reduce the global TB and tobacco-related disease burden.

## Funding/Support

The authors have reported to *CHEST* that no funding was received for this study.

## Financial/Nonfinancial Disclosures

None declared.

## Acknowledgments

**Author contributions:** O. D., K. S., and J. E. G. contributed to conceptualization; O. D. contributed to design of literature search strategy; O. D. and A. L. V. conducted literature searches; O. D., K. S., and A. L. V. contributed to study design; A. L. V., A. R., M. B., A. J., F. S., A.-M. M., J. A., and O. D. contributed to data extraction and quality appraisal; A. L. V. and O. D. contributed to data analysis; A. L. V., O. D., and A. J. contributed to data interpretation; A. L. V. and O. D. contributed to manuscript writing; A. L. V., A. R., M. B., A. J., F. S., J. E. G., K. S., and O. D. contributed to revision of manuscript and editing. All authors had full access to all the data in the study and had final responsibility for the decision to submit for publication.

**Other contributions:** The authors thank Professor Knut Lönnroth for contributing to initial conceptualization of the research question.

**Additional information:** The e-Appendixes, e-Figures, and e-Tables are available online under “Supplementary Data.”

## References

1. Drope J, Hamill S, Chaloupka F, et al. The Tobacco Atlas. 7th ed. Vital Strategies; 2022.
2. World Health Organization. *Tobacco: Fact Sheets*. World Health Organization; 2020.
3. Marshall A-M, Barua D, Mitchell A, et al. Smoking prevalence among tuberculosis patients: a cross-sectional study in Bangladesh and Pakistan. *Tob Induc Dis*. 2020;18:70.
4. Basu S, Stuckler D, Bitton A, et al. Projected effects of tobacco smoking on worldwide tuberculosis control: mathematical modelling analysis. *BMJ*. 2011;343:d5506.
5. Deepak K, Daivadanam M, Pradeepkumar A, et al. Smokeless tobacco use among patients with tuberculosis in Karnataka: the need for cessation services. *Natl Med J India*. 2012;25(3):142-145.
6. Elf JL, Variava E, Chon S, et al. Prevalence and correlates of snuff use, and its association with tuberculosis, among women living with HIV in South Africa. *Nicotine Tob Res*. 2019;21(8):1087-1092.
7. Shukla AD, Shreenivasa A, Chaudhary A. Is pulmonary tuberculosis associated with smokeless tobacco use. *J Evol Med Dent Sci*. 2017;6:4515-4518.
8. World Health Organization. *Global Tuberculosis Report 2022*. World Health Organization; 2022.
9. Jeremiah C, Petersen E, Nantanda R, et al. The WHO Global Tuberculosis 2021 Report—not so good news and turning the tide back to end TB. *Int J Infect Dis*. 2022;124(1):S26-S29.
10. Bates MN, Khalakdina A, Pai M, et al. Risk of tuberculosis from exposure to tobacco smoke: a systematic review and meta-analysis. *Arch Intern Med*. 2007;167(4):335-342.
11. Lin H-H, Ezzati M, Murray M. Tobacco smoke, indoor air pollution and tuberculosis: a systematic review and meta-analysis. *PLoS Med*. 2007;4(1):e20.
12. Slama K, Chiang C, Enarson D, et al. Tobacco and tuberculosis: a qualitative systematic review and meta-analysis. *Int J Tuberc Lung Dis*. 2007;11(10):1049-1061.
13. Burusie A, Enqueslassie F, Addissie A, et al. Effect of smoking on tuberculosis treatment outcomes: a systematic review and meta-analysis. *PLoS One*. 2020;15(9):e0239333.
14. Wang E, Arrazola R, Mathema B, et al. The impact of smoking on tuberculosis treatment outcomes: a meta-analysis. *Int J Tuberc Lung Dis*. 2020;24(2):170-175.
15. Uplekar M, Weil D, Lönnroth K, et al. WHO's new end TB strategy. *Lancet*. 2015;385(9979):1799-1801.
16. Page MJ, McKenzie JE, Bossuyt PM, et al. The PRISMA 2020 statement: an updated guideline for reporting systematic reviews. *Syst Rev*. 2021;10(1):89.
17. World Health Organization. *A WHO/ The Union Monograph on TB and Tobacco Control: Joining Efforts to Control Two Related Global Epidemics*. World Health Organization; 2007.
18. World Health Organization. *Global Tuberculosis Report 2013*. World Health Organization; 2013.
19. Effective Public Health Practice Project. *Quality Assessment Tool for Quantitative Studies*. Effective Public Health Practice Project; 2010.
20. Cochrane Collaboration. Review Manager (RevMan) version 5.4. Cochrane Collaboration; 2008.
21. Atkins D, Best D, Briss PA, et al; GRADE Working Group. Grading quality of evidence and strength of recommendations. *BMJ*. 2004;328(7454):1490.
22. Liu B-Q, Peto R, Chen Z-M, et al. Emerging tobacco hazards in China: 1. Retrospective proportional mortality study of one million deaths. *BMJ*. 1998;317(7170):1411-1422.
23. Lam T, Ho S, Hedley A, et al. Mortality and smoking in Hong Kong: case-control study of all adult deaths in 1998. *BMJ*. 2001;323(7309):361.
24. Leung CC, Yew WW, Chan CK, et al. Tuberculosis in older people: a retrospective and comparative study from Hong Kong. *J Am Geriatr Soc*. 2002;50(7):1219-1226.
25. Leung C, Yew W, Chan C, et al. Smoking and tuberculosis in Hong Kong. *Int J Tuberc Lung Dis*. 2003;7(10):980-986.
26. Santha T, Garg R, Frieden TR, et al. Risk factors associated with default, failure and death among tuberculosis patients treated in a DOTS programme in Tiruvallur District, South India, 2000. *Int J Tuberc Lung Dis*. 2002;6(9):780-788.
27. Gajalakshmi V, Peto R, Kanaka TS, et al. Smoking and mortality from tuberculosis and other diseases in India: retrospective study of 43 000 adult male deaths and 35 000 controls. *Lancet*. 2003;362(9383):507-515.
28. Salami A, Oluboyo P. Management outcome of pulmonary tuberculosis: a nine year review in Ilorin, West Afr. *J Med*. 2003;22(2):114-119.
29. Chang K-C, Leung C, Tam C. Risk factors for defaulting from anti-tuberculosis treatment under directly observed treatment in Hong Kong. *Int J Tuberc Lung Dis*. 2004;8(12):1492-1498.
30. Sitas F, Urban M, Bradshaw D, et al. Tobacco attributable deaths in South Africa. *Tob Control*. 2004;13(4):396-399.
31. Abal A, Jayakrishnan B, Parwer S, et al. Effect of cigarette smoking on sputum smear conversion in adults with active pulmonary tuberculosis. *Respir Med*. 2005;99(4):415-420.
32. Altet-Gomez M, Alcaide J, Godoy P, et al. Clinical and epidemiological aspects of smoking and tuberculosis: a

- study of 13038 cases. *Int J Tuberc Lung Dis.* 2005;9(4):430-436.
33. Balbay O, Annakkaya AN, Arbak P, et al. Which patients are able to adhere to tuberculosis treatment? A study in a rural area in the northwest part of Turkey. *Jpn J Infect Dis.* 2005;58(3):152-158.
  34. Chandrasekaran V, Gopi P, Subramani R, et al. Default during the intensive phase of treatment under DOTS programme. *Indian J Tuberc.* 2005;52:197-202.
  35. Gupta PC, Pednekar MS, Parkin D, et al. Tobacco associated mortality in Mumbai (Bombay) India. Results of the Bombay Cohort Study. *Int J Epidemiol.* 2005;34(6):1395-1402.
  36. Thomas A, Gopi P, Santha T, et al. Predictors of relapse among pulmonary tuberculosis patients treated in a DOTS programme in South India. *Int J Tuberc Lung Dis.* 2005;9(5):556-561.
  37. Kolappan C, Subramani R, Karunakaran K, et al. Mortality of tuberculosis patients in Chennai, India. *Bull World Health Organ.* 2006;84(7):555-560.
  38. Babb C, Van Der Merwe L, Beyers N, et al. Vitamin D receptor gene polymorphisms and sputum conversion time in pulmonary tuberculosis patients. *Tuberculosis.* 2007;87(4):295-302.
  39. Cacho J, Meixeira AP, Cano I, et al. Recurrent tuberculosis from 1992 to 2004 in a metropolitan area. *Eur Respir J.* 2007;30(2):333-337.
  40. Güler M, Ünsal E, Dursun B, et al. Factors influencing sputum smear and culture conversion time among patients with new case pulmonary tuberculosis. *Int J Clin Pract.* 2007;61(2):231-235.
  41. Jakubowiak W, Bogorodskaya E, Borisov E, et al. Risk factors associated with default among new pulmonary TB patients and social support in six Russian regions. *Int J Tuberc Lung Dis.* 2007;11(1):46-53.
  42. Wang J-Y, Hsueh P, Jan I, et al. The effect of smoking on tuberculosis: different patterns and poorer outcomes. *Int J Tuberc Lung Dis.* 2007;11(2):143-149.
  43. d'Arc Lyra Batista J, de Fátima Pessoa Militão de Albuquerque M, de Alencar Ximenes RA, Rodrigues LC. Smoking increases the risk of relapse after successful tuberculosis treatment. *Int J Epidemiol.* 2008;37(4):841-851.
  44. Jha P, Jacob B, Gajalakshmi V, et al. A nationally representative case-control study of smoking and death in India. *N Engl J Med.* 2008;358(11):1137-1147.
  45. Piniyapathirage J, Senaratne W, Wickremasinghe R. Prevalence and predictors of default with tuberculosis treatment in Sri Lanka. *Southeast Asian J Trop Med Public Health.* 2008;39(6):1076-1082.
  46. Vasantha M, Gopi P, Subramani R. Survival of tuberculosis patients treated under DOTS in a rural Tuberculosis unit (TU), south India. *Indian J Tuberc.* 2008;55(2):64-69.
  47. Jee SH, Golub JE, Jo J, et al. Smoking and risk of tuberculosis incidence, mortality, and recurrence in South Korean men and women. *Am J Epidemiol.* 2009;170(12):1478-1485.
  48. Jiang J, Liu B, Nasca P, et al. Smoking and risk of death due to pulmonary tuberculosis: a case-control comparison in 103 population centers in China. *Int J Tuberc Lung Dis.* 2009;13(12):1530-1535.
  49. Kherad O, Herrmann FR, Zellweger J-P, et al. Clinical presentation, demographics and outcome of tuberculosis (TB) in a low incidence area: a 4-year study in Geneva, Switzerland. *BMC Infect Dis.* 2009;9:1-8.
  50. Kittikraisak W, Burapat C, Kaewsard S, et al. Factors associated with tuberculosis treatment default among HIV-infected tuberculosis patients in Thailand. *Trans R Soc Trop Med Hyg.* 2009;103(1):59-66.
  51. Millet J-P, Orcau A, De Olalla PG, et al. Tuberculosis recurrence and its associated risk factors among successfully treated patients. *J Epidemiol Commun Health.* 2009;63(10):799-804.
  52. Metanat M, Mood BS, Parsi M, et al. Effect of cigarette smoking on sputum smear conversion time among adult new pulmonary tuberculosis patients: a study from Iran Southeast. *Arch Clin Infect Dis.* 2010;5:14-17.
  53. Siddiqui UA, Kabir M, O'Toole MZ, et al. Smoking prolongs the infectivity of patients with tuberculosis. *Ir Med J.* 2010;103(9):278-280.
  54. Silva DR, Menegotto DM, Schulz LF, et al. Factors associated with mortality in hospitalized patients with newly diagnosed tuberculosis. *Lung.* 2010;188(1):33-41.
  55. Tabarsi P, Baghaei P, Marjani M, et al. Risk factors of death among hospitalized patients with tuberculosis: a report from Iran. Paper presented at: 20th ECCMID Meeting; April 10-13, 2010; Vienna, Austria.
  56. Vijay S, Kumar P, Chauhan LS, et al. Risk factors associated with default among new smear positive TB patients treated under DOTS in India. *PLoS One.* 2010;5(4):e10043.
  57. Dujaili JA, Syed Sulaiman SA, Awaisu A, et al. Outcomes of tuberculosis treatment: a retrospective cohort analysis of smoking versus non-smoking patients in Penang, Malaysia. *J Public Health.* 2011;19:183-189.
  58. García-García J-M, Blanquer R, Rodrigo T, et al. Social clinical and microbiological differential characteristics of tuberculosis among immigrants in Spain. *PLoS One.* 2011;6(1):e16272.
  59. Maruza M, Militão Albuquerque MF, Coimbra I, et al. Risk factors for default from tuberculosis treatment in HIV-infected individuals in the state of Pernambuco, Brazil: a prospective cohort study. *BMC Infect Dis.* 2011;11:351.
  60. Mahdi NNR, Mohd NS, Wan MZ, et al. Factors associated with unsuccessful treatment outcome of pulmonary tuberculosis in Kota Bharu, Kelantan. *Malaysian J Public Health Med.* 2011;11(1):6-15.
  61. Solliman M, Hassali M, Shafie A, et al. PRS58 treatment outcomes of new smear positive pulmonary tuberculosis patients in North East Libya. *Value Health.* 2011;14(7):A498.
  62. Tachfouti N, Nejari C, Benjelloun M, et al. Association between smoking status, other factors and tuberculosis treatment failure in Morocco. *Int J Tuberc Lung Dis.* 2011;15(6):838-843.
  63. Tachfouti N, Slama K, Berraho M, et al. Determinants of tuberculosis treatment default in Morocco: results from a national cohort study. *Pan Afr Med J.* 2013;14:1-8.
  64. Anaam M, Ibrahim M, Al Serouri A, et al. A nested case-control study on relapse predictors among tuberculosis patients treated in Yemen's NTCP. *Public Health Action.* 2012;2(4):168-173.
  65. Chiang Y-C, Lin Y-M, Lee J-A, et al. Tobacco consumption is a reversible risk factor associated with reduced successful treatment outcomes of anti-tuberculosis therapy. *Int J Infect Dis.* 2012;16(2):e130-e135.
  66. Feng J-Y, Huang S-F, Ting W-Y, et al. Gender differences in treatment outcomes of tuberculosis patients in Taiwan: a prospective observational study. *Clin Microbiol Infect.* 2012;18(9):E331-E337.
  67. Lisha P, James P, Ravindran C. Morbidity and mortality at five years after initiating category I treatment among patients with new sputum smear positive pulmonary tuberculosis. *Indian J Tuberc.* 2012;59(2):83-91.
  68. Tabarsi P, Chitsaz E, Moradi A, et al. Treatment outcome, mortality and their predictors among HIV-associated tuberculosis patients. *Int J STD AIDS.* 2012;23(9):e1-e4.
  69. Visser ME, Stead MC, Walzl G, et al. Baseline predictors of sputum culture conversion in pulmonary tuberculosis: importance of cavities, smoking, time to detection and W-Beijing genotype. *PLoS One.* 2012;7(1):e29588.
  70. Alavi-Naini R, Moghtaderi A, Metanat M, et al. Factors associated with mortality in tuberculosis patients. *J Res Med Sci.* 2013;18(1):52-55.
  71. Bonacci RA, Cruz-Hervert LP, García-García L, et al. Impact of cigarette smoking on rates and clinical prognosis of pulmonary tuberculosis in Southern Mexico. *J Infect.* 2013;66(4):303-312.
  72. Maciel E, Brioschi A, Peres R, et al. Smoking and 2-month culture conversion during anti-tuberculosis treatment. *Int J Tuberc Lung Dis.* 2013;17(2):225-228.

73. Mnisi T, Tumbo J, Govender I. Factors associated with pulmonary tuberculosis outcomes among inmates in Potchefstroom Prison in North West province, S Afr. *J Epidemiol and Infect.* 2013;28(2):96-101.
74. Dudala SR, Rao AR, Kumar BPR. Factors influencing treatment outcome of new sputum smear positive tuberculosis patients in tuberculosis unit Khammam. *Int J Med Health Sci.* 2013;2(2):195-204.
75. Reed GW, Choi H, Lee SY, et al. Impact of diabetes and smoking on mortality in tuberculosis. *PLoS One.* 2013;8(2):e58044.
76. Slama K, Tachfouti N, Obtel M, et al. Factors associated with treatment default by tuberculosis patients in Fez, Morocco. *East Mediterr Health J.* 2013;19(8):687-693.
77. Ahmad SR, Velhal GD. Study of treatment interruption of new sputum smear positive TB cases under DOTS strategy. *Int J Med Sci Public Health.* 2014;3(8):977-981.
78. Alo A, Gounder S, Graham S. Clinical characteristics and treatment outcomes of tuberculosis cases hospitalised in the intensive phase in Fiji. *Public Health Action.* 2014;4(3):164-168.
79. Cherkaoui I, Sabouni R, Ghali I, et al. Treatment default amongst patients with tuberculosis in urban Morocco: predicting and explaining default and post-default sputum smear and drug susceptibility results. *PLoS One.* 2014;9(4):e93574.
80. Choi H, Lee M, Chen RY, et al. Predictors of pulmonary tuberculosis treatment outcomes in South Korea: a prospective cohort study, 2005-2012. *BMC Infect Dis.* 2014;14:1-12.
81. de Boer RN, Oliveira e Souza Filho JB, Cobelens F, et al. Delayed culture conversion due to cigarette smoking in active pulmonary tuberculosis patients. *Tuberculosis.* 2014;94(1):87-91.
82. Ibrahim LM, Hadejia IS, Nguku P, et al. Factors associated with interruption of treatment among pulmonary tuberculosis patients in Plateau State, Nigeria, 2011. *Pan Afr Med J.* 2014;12(1):172-179.
83. Ibrahim LM, Hadejia IS, Nguku P, et al. Factors associated with outcomes of treatment among pulmonary tuberculosis patients in Plateau State, Nigeria, 2011. *J US-China Med Sci.* 2015;12:12.
84. Louwagie GMC, Ayo-Yusuf OA. Factors associated with retreatment tuberculosis in Tshwane, South Africa: the role of tobacco smoking. *S Afr J Infect Dis.* 2014;29:87-90.
85. Lucenko I, Riekstina V, Perevoscikovs J, et al. Treatment outcomes among drug-susceptible tuberculosis patients in Latvia, 2006-2010. *Public Health Action.* 2014;4(Suppl 2):S54-S58.
86. Pefura-Yone EW, Kengne AP, Kuaban C. Non-conversion of sputum culture among patients with smear positive pulmonary tuberculosis in Cameroon: a prospective cohort study. *BMC Infect Dis.* 2014;14:1-6.
87. Przybylski G, Dąbrowska A, Trzcińska H. Alcoholism and other socio-demographic risk factors for adverse TB-drug reactions and unsuccessful tuberculosis treatment—data from ten years' observation at the Regional Centre of Pulmonology, Bydgoszcz, Poland. *Med Sci Monit.* 2014;20:444.
88. Yen Y, Yen M, Lin Y, et al. Smoking increases risk of recurrence after successful anti-tuberculosis treatment: a population-based study. *Int J Tuberc Lung Dis.* 2014;18(4):492-498.
89. Chuang H-C, Su C-L, Liu H-C, et al. Cigarette smoke is a risk factor for severity and treatment outcome in patients with culture-positive tuberculosis. *Ther Clin Risk Manag.* 2015;11:1539.
90. Driessche KV, Patel MR, Mbonze N, et al. Effect of smoking history on outcome of patients diagnosed with TB and HIV. *Eur Respir J.* 2015;45(3):839-842.
91. Gegia M, Magee MJ, Kempker RR, et al. Tobacco smoking and tuberculosis treatment outcomes: a prospective cohort study in Georgia. *Bull World Health Organ.* 2015;93(6):390-399.
92. Kanda R, Nagao T, Tho NV, et al. Factors affecting time to sputum culture conversion in adults with pulmonary tuberculosis: a historical cohort study without censored cases. *PLoS One.* 2015;10(11):e0142607.
93. Khan AH, Aftab RA, Israr M, et al. Smoking on treatment outcomes among tuberculosis patients. *Am J Med Sci.* 2015;349(6):505-509.
94. Leung CC, Yew WW, Chan CK, et al. Smoking adversely affects treatment response, outcome and relapse in tuberculosis. *Eur Respir J.* 2015;45(3):738-745.
95. Liew S, Khoo E, Ho B, et al. Tuberculosis in Malaysia: predictors of treatment outcomes in a national registry. *Int J Tuberc Lung Dis.* 2015;19(7):764-771.
96. Mahishale V, Patil B, Lolly M, et al. Prevalence of smoking and its impact on treatment outcomes in newly diagnosed pulmonary tuberculosis patients: a hospital-based prospective study. *Chonnam Med J.* 2015;51(2):86-90.
97. Moosazadeh M, Bahrapour A, Nasehi M, et al. The incidence of recurrence of tuberculosis and its related factors in smear-positive pulmonary tuberculosis patients in Iran: a retrospective cohort study. *Lung India.* 2015;32(6):557-560.
98. Roy N, Basu M, Das S, et al. Risk factors associated with default among tuberculosis patients in Darjeeling district of West Bengal, India. *J Family Med Prim Care.* 2015;4(3):388.
99. Yamana H, Matsui H, Fushimi K, et al. Treatment options and outcomes of hospitalised tuberculosis patients: a nationwide study. *Int J Tuberc Lung Dis.* 2015;19(1):120-126.
100. Ahmad D, Khan MM, Aslam F, et al. Association of smoking with recurrence of pulmonary Kochs; after completion of antituberculous treatment. *J Ayub Med Coll Abbottabad.* 2016;28(4):781-787.
101. Ajili IME, Saad SB, Tkhayet AB, et al. Delayed sputum smear conversion due to cigarette smoking in active pulmonary tuberculosis. *Eur Respiratory Soc.* 2016;48(suppl 60):OA1515.
102. Rathee D, Arora P, Meena M, et al. Comparative study of clinico-bacterio-radiological profile and treatment outcome of smokers and nonsmokers suffering from pulmonary tuberculosis. *Lung India.* 2016;33(5):507-511.
103. Rodrigo T, Casals M, Caminero J, et al. Factors associated with fatality during the intensive phase of anti-tuberculosis treatment. *PLoS One.* 2016;11(8):e0159925.
104. Veerakumar A, Sahu SK, Sarkar S, et al. Factors affecting treatment outcome among pulmonary tuberculosis patients under RNTCP in urban Pondicherry, India. *Indian J Community Health.* 2016;28:94-99.
105. Yen Y-F, Chuang P-H, Yen M-Y, et al. Association of body mass index with tuberculosis mortality: a population-based follow-up study. *Medicine.* 2016;95(1):e2300.
106. Altet N, Latorre I, Jiménez-Fuentes MÁ, et al. Assessment of the influence of direct tobacco smoke on infection and active TB management. *PLoS One.* 2017;12(8):e0182998.
107. Balian DR, Davtyan K, Balian A, et al. Tuberculosis treatment and smoking, Armenia, 2014-2016. *J Clin Tuberc Other Mycobact Dis.* 2017;8:1-5.
108. Jaber AAS, Khan AH, Sulaiman SAS. Evaluating treatment outcomes and durations among cases of smear-positive pulmonary tuberculosis in Yemen: a prospective follow-up study. *J Pharm Policy Pract.* 2017;10:36.
109. Kalema N, Lindan C, Glidden D, et al. Predictors and short-term outcomes of recurrent pulmonary tuberculosis, Uganda: a cohort study. *S Afr Respir J.* 2017;23(4):106-112.
110. Musteikienė G, Miliuskas S, Zaveckienė J, et al. Factors associated with sputum culture conversion in patients with pulmonary tuberculosis. *Medicina (Kaunas).* 2017;53(6):386-393.
111. Nagu T, Ray R, Munseri P, et al. Tuberculosis among the elderly in Tanzania: disease presentation and initial response to treatment. *Int J Tuberc Lung Dis.* 2017;21(12):1251-1257.
112. Shamaei M, Samiei-Nejad M, Nadernejad M, et al. Risk factors for readmission to hospital in patients with tuberculosis in Tehran, Iran: three-year

- surveillance. *Int J STD AIDS*. 2017;28(12):1169-1174.
113. Tola HH, Garmaroudi G, Shojaeizadeh D, et al. The effect of psychosocial factors and patients' perception of tuberculosis treatment non-adherence in Addis Ababa, Ethiopia. *Ethiop J Health Sci*. 2017;27(5):447-448.
  114. Cailleaux-Cezar M, Loredo C, Silva JRL, et al. Impact of smoking on sputum culture conversion and pulmonary tuberculosis treatment outcomes in Brazil: a retrospective cohort study. *J Bras Pneumol*. 2018;44(2):99-105.
  115. Dizaji MK, Kazemnejad A, Tabarsi P, et al. Risk factors associated with survival of pulmonary tuberculosis. *Iran J Public Health*. 2018;47(7):980-987.
  116. Madeira de Oliveira S, Altmayer S, Zanon M, et al. Predictors of noncompliance to pulmonary tuberculosis treatment: an insight from South America. *PLoS One*. 2018;13(9):e0202593.
  117. Mukhtar F, Butt ZA. Risk of adverse treatment outcomes among new pulmonary TB patients co-infected with diabetes in Pakistan: a prospective cohort study. *PLoS One*. 2018;13(11):e0207148.
  118. Rosser A, Richardson M, Wiselka MJ, et al. A nested case-control study of predictors for tuberculosis recurrence in a large UK Centre. *BMC Infect Dis*. 2018;18(1):94.
  119. Aguilar JP, Arriaga MB, Rodas MN, et al. Smoking and pulmonary tuberculosis treatment failure: a case-control study [in English, Spanish]. *J Bras Pneumol*. 2019;45(2):e20180359.
  120. Azeez A, Mutambayi R, Odeyemi A, et al. Survival model analysis of tuberculosis treatment among patients with human immunodeficiency virus coinfection. *Int J Mycobacteriol*. 2019;8(3):244-251.
  121. Castro SS, Scatena LM, Miranzi A, Miranzi Neto A, Nunes AA. Characteristics of cases of tuberculosis coinfecting with HIV in Minas Gerais State in 2016. *Rev Inst Med Trop Sao Paulo*. 2019;61:e21.
  122. Gupta A, Kumar V, Mahajan A, et al. Effect of smoking on treatment outcomes among newly diagnosed Tuberculosis patients in Shimla. *Indian J Community Health*. 2019;31(2):193-199.
  123. Gupte A, Selvaraju S, Paradkar M, et al. Respiratory health status is associated with treatment outcomes in pulmonary tuberculosis. *Int J Tuberc Lung Dis*. 2019;23(4):450-457.
  124. Thomas BE, Thiruvengadam K, Kadam D, et al. Smoking, alcohol use disorder and tuberculosis treatment outcomes: a dual co-morbidity burden that cannot be ignored. *PLoS One*. 2019;14(7):e0220507.
  125. Hameed S, Zuberi FF, Hussain S, et al. Risk factors for mortality among inpatients with smear positive pulmonary tuberculosis. *Pak J Med Sci*. 2019;35(5):1361-1365.
  126. Ma Y, Che N-Y, Liu Y-H, et al. The joint impact of smoking plus alcohol drinking on treatment of pulmonary tuberculosis. *Eur J Clin Microbiol Infect Dis*. 2019;38(4):651-657.
  127. Mathur N, Chatla C, Syed S, et al. Prospective 1-year follow-up study of all cured, new sputum smear positive tuberculosis patients under the Revised National Tuberculosis Control Program in Hyderabad, Telangana State, India. *Lung India*. 2019;36(6):519-524.
  128. Nakao M, Muramatsu H, Arakawa S, et al. Immunonutritional status and pulmonary cavitation in patients with tuberculosis: a revisit with an assessment of neutrophil/lymphocyte ratio. *Respir Invest*. 2019;57(1):60-66.
  129. Paunikar AP, Khadilkar HA, Doibale MK, et al. Survival analysis of treatment defaulters among tuberculosis patients in government medical college and hospital, Aurangabad. *Indian J Community Med*. 2019;44(1):44-47.
  130. Reimann M, Schaub D, Kalsdorf B, et al. Cigarette smoking and culture conversion in patients with susceptible and M/XDR-TB. *Int J Tuberc Lung Dis*. 2019;23(1):93-98.
  131. Sharma P, Lalwani J, Pandey P, et al. Factors associated with the development of secondary multidrug-resistant tuberculosis. *Int J Prev Med*. 2019;10:67.
  132. Wardani DWSR, Wahono EP. Predominant determinants of delayed tuberculosis sputum conversion in Indonesia. *Indian J Community Med*. 2019;44(1):53-57.
  133. Ajema D, Shibru T, Endalew T, et al. Level of and associated factors for non-adherence to anti-tuberculosis treatment among tuberculosis patients in Gamo Gofa zone, southern Ethiopia: cross-sectional study. *BMC Public Health*. 2020;20(1):1705.
  134. da Silva Peres Bezerra W, Lemos EF, do Prado TN, et al. Risk stratification and factors associated with abandonment of tuberculosis treatment in a secondary referral unit. *Patient Prefer Adherence*. 2020;14:2389-2397.
  135. Khan AH, Sulaiman SAS, Hassali MA, et al. Effect of smoking on treatment outcome among tuberculosis patients in Malaysia; a multicenter study. *BMC Public Health*. 2020;20(1):854.
  136. Pore PD, Kumar A, Farooqui IA. Noncompliance to directly observed treatment short course in Mulshi block, Pune district. *Indian J Community Med*. 2020;45(3):291-294.
  137. Sembiah S, Nagar V, Gour D, et al. Diabetes in tuberculosis patients: an emerging public health concern and the determinants and impact on treatment outcome. *J Family Community Med*. 2020;27(2):91-96.
  138. Serpoosh H, Hamidi Y, Eini P, et al. Association of smoking and drug abuse with treatment failure in individuals with tuberculosis: a case-control study. *Adv Respir Med*. 2020;88(5):383-388.
  139. Takasaka N, Seki Y, Fujisaki I, et al. Impact of emphysema on sputum culture conversion in male patients with pulmonary tuberculosis: a retrospective analysis. *BMC Pulm Med*. 2020;20(1):287.
  140. Tok PSK, Liew SM, Wong LP, et al. Determinants of unsuccessful treatment outcomes and mortality among tuberculosis patients in Malaysia: a registry-based cohort study. *PLoS One*. 2020;15(4):e0231986.
  141. Asemahagn MA. Sputum smear conversion and associated factors among smear-positive pulmonary tuberculosis patients in East Gojjam Zone, Northwest Ethiopia: a longitudinal study. *BMC Pulm Med*. 2021;21(1):118.
  142. Bhatti Z, Khan AH, Sulaiman SAS, et al. Determining the risk factors associated with delayed sputum conversion at the end of the intensive phase among tuberculosis patients. *East Mediterr Health J*. 2021;27(8):755-763.
  143. Cao J, Liu S, Huang J. Risk factor for 31-day unplanned readmission to hospital in patients with pulmonary tuberculosis in China. *Saudi Med J*. 2021;42(9):1017-1023.
  144. Carter BB, Zhang Y, Zou H, et al. Survival analysis of patients with tuberculosis and risk factors for multidrug-resistant tuberculosis in Monrovia, Liberia. *Plos One*. 2021;16(4):e0249474.
  145. de Vargas KR, Freitas AA, Azeredo ACV, et al. Smoking prevalence and effects on treatment outcomes in patients with tuberculosis. *Rev Assoc Med Bras*. 2021;67(3):406-410.
  146. Kassim SA, Cote A, Kassim SM, et al. Factors influencing treatment outcomes of tuberculosis patients attending health facilities in Galkayo Puntland, Somalia. *J Public Health*. 2021;43(4):887-895.
  147. Lin Y, Lin H, Xiao L, et al. Tuberculosis recurrence over a 7-year follow-up period in successfully treated patients in a routine program setting in China: a prospective longitudinal study. *Int J Infect Dis*. 2021;110:403-409.
  148. Mokti K, Isa ZM, Sharip J, et al. Predictors of delayed sputum smear conversion among pulmonary tuberculosis patients in Kota Kinabalu, Malaysia: a retrospective cohort study. *Medicine*. 2021;100(31):e26841.
  149. Chiang C, Bam T. The impact of smoking on TB treatment outcomes includes recurrent TB. *Int J Tuberc Lung Dis*. 2020;24(11):1224-1225.
  150. Wang E, Ahluwalia I, Mase S. Response to correspondence: the impact of smoking on TB treatment outcomes includes recurrent TB. *Int J Tuberc Lung Dis*. 2020;24(11):1225a-1225.

151. van Zyl Smit RN, Pai M, Yew W-W, et al. Global lung health: the colliding epidemics of tuberculosis, tobacco smoking, HIV and COPD. *Eur Respir J*. 2010;35(1):27-33.
152. US Department of Health Human Services. *The Health Consequences of Smoking—50 Years of Progress: A Report of the Surgeon General*. US Department of Health and Human Services, Centers for Disease Control and Prevention; 2014.
153. Chetan S. Nasal muco-ciliary clearance in snuff users. *J Laryngol Otol*. 1993;107(1):24-26.
154. Tyx RE, Stanfill SB, Keong LM, et al. Characterization of bacterial communities in selected smokeless tobacco products using 16S rDNA analysis. *PLoS One*. 2016;11(1):e0146939.
155. Sterne JA, Sutton AJ, Ioannidis JP, et al. Recommendations for examining and interpreting funnel plot asymmetry in meta-analyses of randomised controlled trials. *BMJ*. 2011;343:d4002.
156. Dogar O, Vidyasagaran A. Supporting tobacco cessation in tuberculosis patients. *Indian J Tuberc*. 2021;68S:S89-S92.
157. Siddiqi K, Keding A, Marshall A-M, et al. Effect of quitting smoking on health outcomes during treatment for tuberculosis: secondary analysis of the TB & Tobacco Trial. *Thorax*. 2022;77(1):74-78.