

This is a repository copy of *Ancient lipids document continuity in the use of early hunter-gatherer pottery through 9,000 years of Japanese prehistory*.

White Rose Research Online URL for this paper:

<https://eprints.whiterose.ac.uk/id/eprint/99886/>

Version: Accepted Version

Article:

Lucquin, Alexandre orcid.org/0000-0003-4892-6323, Gibbs, Kevin, Uchiyama, Junzo et al. (11 more authors) (2016) Ancient lipids document continuity in the use of early hunter-gatherer pottery through 9,000 years of Japanese prehistory. *Proceedings of the National Academy of Sciences of the United States of America*. 3991–3996. ISSN: 1091-6490

<https://doi.org/10.1073/pnas.1522908113>

Reuse

Other licence.

Takedown

If you consider content in White Rose Research Online to be in breach of UK law, please notify us by emailing eprints@whiterose.ac.uk including the URL of the record and the reason for the withdrawal request.

Ancient lipids document continuity in the use of early hunter-gatherer pottery through 9,000 years of Japanese prehistory

Lucquin, A.¹, Gibbs, K.², Uchiyama, J.³, Saul, H.¹, Ajimoto, M.⁴, Eley, Y.¹, Radini, A.¹, Heron C.P.⁵, Shoda, S.¹, Nishida, Y.⁶, Lundy, J.Y.¹, Jordan, P. D.⁷, Isaksson S.⁸, Craig, O.E.¹.

¹ BioArCh, University of York, Biology S-Block, Wentworth Way, York YO10 5DD, UK.

² Department of Anthropology, University of Nevada, Las Vegas, Las Vegas 89154, USA.

³ World Heritage Center Division, Shizuoka Prefectural Government, 9-6 Otemachi, Aoi-ku, Shizuoka City, 420-8601, Japan

⁴ Fukui Prefectural Wakasa History Museum, 2-104, Onyu, Obama, Fukui, 917-0241, Japan.

⁵ School of Archaeological Sciences, University of Bradford, Richmond Road, Bradford BD7 1DP, UK

⁶ Niigata Prefectural Museum of History, Sekihara 1, Nagaoka, Niigata 940-2035, Japan

⁷ Arctic Centre, University of Groningen, Aweg 30, 9718 CW, The Netherlands

⁸ Archaeological Research Laboratory, Department of Archaeology and Classical Studies, Wallenberglaboratoriet, Stockholm University, SE 10691 Stockholm, Sweden

Classification: SOCIAL SCIENCES: Anthropology, PHYSICAL SCIENCES: Chemistry

Corresponding author: O.E. Craig, BioArCh, University of York, Biology S-Block, Wentworth Way, York YO10 5DD, UK. oliver.craig@york.ac.uk, 00 (44) 1904 328626

Keywords: ceramic, archaeology, prehistory, Holocene, Pleistocene, Japan, GC-MS, GC-c-IRMS, starch, phytolith

Abstract

The earliest pots in the world are from East Asia and date to the Late Pleistocene. However, ceramic vessels were only produced in large numbers during the warmer and more stable climatic conditions of the Holocene. It has long been assumed that the expansion of pottery was linked with increased sedentism and exploitation of new resources that became available with the ameliorated climate, but this hypothesis has never been tested. Through chemical analysis of their contents, here we investigate the use of pottery across an exceptionally long, 9,000 year sequence from the Jōmon site of Torihama in Western Japan, intermittently occupied from the Late Pleistocene to the mid-Holocene. Molecular and isotopic analyses of lipids from 143 vessels provides clear evidence that pottery across this sequence was predominantly used for cooking marine and freshwater resources, with evidence for diversification in the range of aquatic products processed during the Holocene. Conversely, there is little indication that ruminant animals or plants were processed in pottery, although it is evident from the faunal and macrobotanical remains that these foods were heavily exploited. Supported by other residue analysis data from Japan, our results show that the link between pottery and fishing was established in the Late Palaeolithic and lasted well into the Holocene despite environmental and socio-economic change. Cooking aquatic products in pottery represents an enduring social aspect of East Asian hunter-gatherers; a tradition based on a dependable technology for exploiting a sustainable resource in an uncertain and changing world.

Significance statement

Pottery has had a central role in human society for many millennia but the reasons for the emergence and spread of this technology are poorly understood. First invented by groups of hunter-gatherers living in East Asia during the last glacial period, production only began to flourish with rising global temperatures in the Holocene but the reasons for its uptake and spread are unknown. Through chemical analysis of their contents, here we provide the first direct evidence of pottery use across this climatic transition. Contrary to expectations, ceramic vessels had a remarkably consistent use, predominantly for processing aquatic resources, indicating that cultural rather than environmental factors were most important for their widespread uptake.

\body

The emergence and development of pottery remains one of the most important research questions in archaeology. Once linked exclusively to the development of farming and settled village life, it is now known that the origins of pottery are instead bound-up in a complex process of innovation that ultimately extends back as far as 20,000 years to groups of East Asian hunter-gatherers living during the Late Pleistocene (1–3). One of the earliest and best studied centres for the innovation and development of ceramic containers is the Japanese archipelago. Pottery was invented here around 16,000 years ago and remained an important part of hunter-gatherer life (Jōmon culture) until the transition to rice cultivation ca. 2,800 years ago. The earliest pots in Japan, produced during the ‘Incipient’ Jōmon phase (16-11,500 cal BP), were small and found only in low numbers per site. It is thought they had a very limited range of uses, possibly for the occasional small scale and highly labour-intensive preparation of ‘exotic’ or ‘prestige’ foods (4). Pottery only began to flourish, however, with the steady warming of global temperatures from around 11,500 years ago, and production increased exponentially throughout the early Holocene (11,500-7,000 cal BP), with the ameliorated climate (5). These changing climate conditions resulted in ecological shifts in forest vegetation (6) and salt-water inundation of the rich coastal plains that surround the Japanese archipelago. Produced in much greater quantities during the Holocene, it has been hypothesised that pottery may have facilitated new strategies for the processing, storage and serving of a wider array of increasingly abundant foodstuffs such as plant foods and shellfish (7). The enhanced production of ceramics has also been linked to increased sedentism, population growth and perhaps also to the dispersal of pottery technology westwards across Northern Eurasia and northwards towards Alaska (8).

Despite such speculation, it is not known how East Asian hunter-gatherers adapted their pottery to accommodate changing environmental conditions and resource availability, or indeed whether other non-economic drivers for the uptake of pottery were also in play. Since animal and plant remains are generally very poorly preserved in this region, particularly during the late glacial period, direct determination of the use of pottery is critical to answering this question. We have recently shown that lipids can be reliably characterised in Late Pleistocene ceramic vessels to reveal their original contents (9). We suggested that the primary use of pottery during this period was for processing aquatic resources, albeit based on a limited number of samples from two Incipient Jōmon sites. Beyond this study, little is known about how hunter-gatherer pottery use may have changed or diversified in the Holocene.

Here, we report molecular and isotopic analyses of the contents of pottery vessels from the archaeological site of Torihama, located in Wakasa Bay, Fukui prefecture, Japan (Fig. 1). The earliest Jōmon pots (Incipient Jōmon) available from this site date from ca. 14,000 BP, but crucially the pottery sequence continues through the Younger Dryas chronozone into the Holocene (Initial Jōmon, 11,500 BP) and Early Jōmon period (ca. 7,000 BP), when a shell mound was formed at the site. Exceptionally for East Asia, organic artefacts and ecofacts are preserved

in the waterlogged deposits of Torihama providing a rare opportunity to examine pottery use against changes in the fauna and flora that were exploited, as well as other material culture associated with their procurement and processing. It has been tentatively proposed that the site was initially a seasonal (summer/autumn) hunting and fishing station in the Late Pleistocene but became occupied for longer periods of time during the Early Holocene, with greater emphasis on plant and freshwater shellfish collection (10–13). Despite sea-level rise at the Pleistocene/Holocene transition, marine foods were most likely available throughout the sequence as the distance the open sea remained reachable due to the steep coastal morphology (Fig 1).

To investigate changes in the pottery use at this site, three complementary methods were deployed using well-established protocols (see Methods) to 143 vessels from all 9 stratigraphic phases at Torihama (Table S1). First, lipids were extracted from ceramics and adhering charred surface deposits (foodcrusts) and their structural and carbon isotope characteristics determined using gas chromatography-mass spectrometry (GC-MS) and GC-combustion-isotope ratio MS (GC-c-IRMS) respectively. Second, carbonised deposits were directly analysed by elemental analysis - isotope ratio mass spectrometry (EA-IRMS) to determine their bulk carbon ($\delta^{13}\text{C}$) and nitrogen ($\delta^{15}\text{N}$) stable isotope values. Finally, plant microfossils (starch and phytoliths) were extracted and counted in carbonised deposits adhering to interior and where possible exterior surfaces.

Results

Diagnostic compounds (“biomarkers”) for aquatic foods were identified by GC-MS in a large proportion of samples analysed (Table 1, Fig. 2A), regardless of period (Incipient, Initial or Early) or sub-phase (Fig 2D, Table S1). In total over 50% of the samples analysed that produced an interpretable residue contained isoprenoid alkanolic acids and long-chain ($\text{C}_{18}\text{--}\text{C}_{22}$) ω -(*o*-alkylphenyl) alkanolic acids (APAAs, Fig. 2A), satisfying the full molecular criteria for aquatic products in archaeological pottery (15). Such APAAs are only formed from protracted or repeated heating of polyunsaturated fatty acids in aquatic oils and therefore must be derived from primary use of the pot (16). The high proportion of APAAs recovered is remarkable given the antiquity of the vessels and must represent only a minimum estimate for the presence of aquatic products, given that APPAs are not easily formed and are susceptible to degradation and loss due to their low abundance. A greater number of samples had partial sets of biomarkers consisting of C_{18} APAAs and at least one isoprenoid (Table 1, Fig. 2A), and many more had lipid profiles consisting of medium- and long-chain saturated ($\text{C}_{14}\text{--}\text{C}_{24}$), monounsaturated ($\text{C}_{16:1}\text{--}\text{C}_{22:1}$) and dicarboxylic ($\text{C}_7\text{--}\text{C}_{13}$) fatty acids which are typical of degraded fish and aquatic mammal oils (Table S1). In addition, the relative frequencies of two naturally occurring diastereomers of phytanic acid were assessed (3*S*,7*R*,11*R*,15-phytanic and 3*R*,7*R*,11*R*,15-phytanic acid). Phytanic acid is an isoprenoid acid only present in high abundance in the tissues of ruminant, freshwater and marine animals with a predominance (i.e. >60%) of the *SRR*-isomer in aquatic species (17, 18). Phytanic acid was observed in 89% of the archaeological samples analysed, and in the majority of cases (ca. 90%) the *SRR*-isomer was most abundant, consistent with an aquatic

rather than ruminant source (Fig 2B). However, a slight decrease in the contribution of *SRR* was observed through time (Fig. 2B), which may indicate a broadening of pottery use.

Bulk carbon ($\delta^{13}\text{C}$), nitrogen ($\delta^{15}\text{N}$) stable isotopes and atomic carbon to nitrogen ratios (C:N) were obtained from the charred deposits adhering to 70 vessel interiors to assess the origin of the bulk organic matter in these residues. Whilst this approach has been widely applied to study the use of East Asian pottery (19, 20), it offers only crude resolution of contents due to uncertainties in the isotope end-points of different foodstuffs and due to diagenetic alteration (21). The $\delta^{15}\text{N}$ values of 75% of charred deposits analysed ranged between 8.8 and 13.4‰ (Fig 2C), regardless of period. A similar range has been previously observed in charred ceramic deposits from different coastal archaeological sites associated with the exploitation of fish and marine mammals (22, 23) and is more consistent with reference tissues from aquatic organisms than terrestrial animals or plants (24), although mixing of the latter cannot be ruled out or accurately quantified using this approach. We note however that over 90% of the samples have atomic C:N ratios less than 12 (median = 9.7; Table S1) which characterise protein rich foods rather than starchy plants (20). Carbonised deposits more depleted in ^{15}N (ie. below 6‰) and consistent with terrestrial plant and animal foods, were only observed in the minority of cases (ca. 8% of observations). In one charred deposit (T309), associated with an Early Jōmon vessel, we observed a bulk ^{15}N value of -0.3‰ and a C:N ratio of 21.5. Coupled with the absence of aquatic lipid biomarkers, this result provides the only convincing example of plant processing in pottery from Torihama (19).

Carbon isotope ratios ($\delta^{13}\text{C}$) of charred deposits showed a greater difference between periods, with Early Jōmon pots much more variable (Fig. 2C). This parameter is mainly controlled by the carbon source. Marine carbon is more enriched in ^{13}C compared to terrestrial and freshwater sources. In this case, the samples most depleted ^{13}C were some of the most enriched in ^{15}N (Fig 2C) and also had relatively low atomic C:N ratios (Table S1). These values are consistent with freshwater fish and may indicate therefore a change from marine species in the Incipient period to a mixture of freshwater, brackish and marine by the Early Jōmon. This shift corresponds to the establishment of the shell midden and may indicate a broadening of the aquatic species targeted at this juncture. However, the remnant macronutrient composition of the residue also influences $\delta^{13}\text{C}$ values, with lipids depleted in ^{13}C compared to proteins and carbohydrates (21), hence our interpretation may be confounded by preferential loss of these different compound classes. To circumvent this problem, the stable carbon isotope ratio of two medium chain-length saturated alkanolic acids ($\text{C}_{16:0}$ and $\text{C}_{18:0}$) were determined individually using GC-c-IRMS in 52 charred deposits and 58 sherds (Fig. 3). These values were compared with references from authentic modern reference fats and extracted lipids from skeletal tissues of known species from the site (Table S2, Fig. 3).

The GC-c-IRMS data confirm a predominant marine aquatic source in the Incipient Jōmon period pottery, which could be either open marine species, salmonids or a mixture of these (Fig. 3A). The *n*-alkanoic acids extracted from the Holocene age samples (Fig. 3B-C) are more variable and are consistent with reference values from freshwater fish/molluscs and non-ruminants such as

wild boar (Fig. 3, Table S2) although marine derived residues are also represented. The correspondence between relatively low lipid $\delta^{13}\text{C}$ values and aquatic biomarkers strongly supports evidence for the processing of freshwater products. Interestingly, this freshwater signal is only observed in the Early Jōmon pottery (Fig. 3C), despite the fact that freshwater fish, particularly carp (Cyprinidae) are found throughout the sequence and the site is situated near freshwater and brackish lakes (Fig. 1). It is hard to determine whether freshwater fish or freshwater molluscs were processed in pottery at this time. The nitrogen isotope values of carbonised residues from Early Jōmon pottery with aquatic biomarkers are more consistent with reference values from higher trophic level fish than the freshwater molluscs (24, 32) that mainly comprise the midden, although a contribution from the latter cannot be completely ruled out or easily distinguished using lipid residue analysis.

A small number of vessels without aquatic biomarkers and with alkanolic acid $\delta^{13}\text{C}$ values consistent with both ruminant and non-ruminant terrestrial animals are observed in all periods. Of the Initial Jōmon vessels analysed, those without charred deposit showed an absence of aquatic biomarkers whereas all charred surface deposits from this period produced the full range of these (Table S1). Moreover, this difference is supported by the stable carbon isotope signature of *n*-alkanoic acids which are more enriched in the samples with charred surface deposits. These data may point to deliberate separation of terrestrial and aquatic resources and more dedicated pottery use during the Initial Jōmon period. There was no such correspondence between vessel use and the presence or absence of charred deposits during the other periods; here aquatic biomarkers were readily formed in both surface deposits and within the vessel wall, although vessels without foodcrusts were rare in our sample. Nevertheless, despite some variation and possible ambiguity due to mixing, we conclude that aquatic foods were a dominant feature of pottery use in all periods; in only the minority of cases (<10%) can we rule out vessels used for this purpose.

None of the samples had very depleted ^{13}C *n*-alkanoic acids values consistent with reference values from acorns obtained from Japanese forests (Fig. 3), despite the abundance of acorn macro-remains in the Torihama deposits. Similarly, the atomic C:N values are not linearly correlated with $\delta^{13}\text{C}$ (Pearson $R = -0.21$, $P = 0.0754$), as would be expected if ^{13}C depleted starchy plant foods were making a significant contribution. The distributions of lipids observed in the pottery are also inconsistent with plant oils or waxes, although plant sterols and terpenes were occasionally observed at low abundance (Table S1). It is possible that low amounts of plant derived lipids may have been masked by lipid rich animal products. To investigate further, plant starch granules and phytoliths (silica bodies) were extracted from interior and exterior charred deposits from 15 Incipient and 6 Early Jōmon vessels using established protocols optimized for pottery residues (33, 34). In each case the number of starch granules (<1 count mg^{-1}) and phytoliths (<10 count mg^{-1}) were very low and significantly indistinguishable from exterior surface deposits (Kruskal-Wallis, $\chi^2(\text{phytoliths})=0.0385$, $p=0.8444$; $\chi^2(\text{starch})=1.6662$, $p=0.1968$) (Table S4). Although starch granules deteriorate during cooking, low counts of more thermally-durable phytoliths were recorded in the same samples, supporting the proposition that an absence of plant remains was not a result of poor preservation. Although plant

processing remains a possibility, as lack of evidence is always difficult to interpret, we argue that given i) the optimal organic conditions for preservation at Torihama, ii) the fact that plant microfossils have been readily extracted from other examples of hunter-gatherer pottery (33, 34), iii) the elevated bulk $\delta^{15}\text{N}$ values, iv) the low atomic C:N ratios, and v) the overwhelming molecular evidence for lipids derived from aquatic animals, the absence of significant plant processing in pottery from Torihama can be reasonably concluded.

Discussion

The close and continued use of pottery for processing aquatic resources contrasts with shifts in artefact assemblages and faunal remains at Torihama. The exceptional preservation of organic materials in the waterlogged deposits at this site shows that a range of terrestrial plant and animal species were exploited in all periods, in addition to freshwater and marine species (12). Pollen from nearby Lake Suigetsu, indicates that deciduous broadleaf forest was already established in the Late Pleistocene and persisted even during the much cooler conditions that prevailed during the Younger Dryas, corresponding to the Incipient Jōmon phase at Torihama (35). Nevertheless, the resurgence of forests in the early Holocene (Initial Jōmon) must have greatly increased opportunities for hunting terrestrial animals and exploiting nut bearing trees. Grinding stones for preparing plant foods, projectiles for hunting as well as acorns, water-chestnut, wild boar, and sika deer are found throughout the sequence. The relative importance of these terrestrial based activities compared to fishing and shellfish collection is hard to accurately assess. Storage pits filled with acorns and an increase in the number of grinding stones relative to other lithic artefacts characterise the Early Jōmon layers (36) and provide the clearest evidence for economic change driven by an increase in the exploitation of forest products. This change also corresponds to an increase in the abundance of pottery relative to lithic artefacts (Table 1) and the start of significant shellfish exploitation. Despite these changes, a broad subsistence strategy is observed throughout the sequence and clearly contrasts with our evidence for specialisation in the use of pottery.

It has been argued that the sharp increase in the frequency of pottery across the Japanese archipelago at the start of the Holocene (37) was associated with new uses for pottery related to the exploitation of a wider range of food products that became available with climatic amelioration. Within this context, the lack of evidence for plant foods in the majority of vessels analysed throughout the sequence at Torihama is particularly interesting, since protracted boiling of nuts to remove toxic tannins and saponins is often cited as a major driver for the uptake of early ceramics (19, 37–39). The paucity of fat-rich ruminant products in pottery, which are easily distinguishable by GC-c-IRMS (25), is similarly intriguing. Given their size and abundance sika deer, in particular, made a substantial contribution to diet and are found in all phases at Torihama (12) but fat from this source could only be clearly identified in three samples (Fig. 3). Nor does it seem likely, given the relatively high ^{15}N values observed in the charred deposits, that exploitation of molluscs was the main driver for increased pottery production as has been suggested (40), even though freshwater molluscs were heavily exploited at Torihama. Instead, the direct evidence of pottery use reported here supports the idea that pottery was invented in the late glacial period with the aim of processing a broader range of

aquatic products (9) and that it retained this primary function at least until the mid-Holocene. Such functional resilience in the use of pottery in the face of altered environmental conditions, dramatic changes in the scale of manufacture as well as proliferation in form and design, is remarkable.

The association between fishing and the hunting of aquatic mammals and pottery production may be a broader feature of pre-agricultural communities. Similarly high $\delta^{15}\text{N}$ values have been found in carbonised deposits on Jōmon pots throughout the Japanese archipelago (9, 19, 20). Lipid residue analysis has shown that marine and freshwater products were frequently processed in pottery produced by Holocene hunter-gatherers from Northeastern North America (22) and the Baltic (23, 41), and in Japan as late as the Final Jōmon phase (1000–400 BC) (42). As the earliest Incipient Jōmon were relatively small, typically 1-2L (43), and were only produced in low numbers, their effectiveness for substantially increasing aquatic resource production is questionable. Our findings are more consistent with the view that pottery was initially a ‘prestige technology’ with a limited range of uses for special foods for aggrandizing or in competitive feasting (4), particularly during periods of high resource abundance and social aggregation. Practically, pottery may have facilitated the rendering and storage of highly prized aquatic oils during seasonal gluts of fish that occur during short-lived episodes of spawning or migration, in concert with other larger perishable containers, as has been documented historically (44). However, it is interesting that this specialised function did not change substantially as new forms emerged and pottery became more abundant and easier to produce during the Holocene, unless the perceived ‘value’ of aquatic foods also changed through time. A broadening of the types of aquatic resources processed in pottery in the Holocene to encompass freshwater and brackish species provides the only evidence that the tight control governing pottery use was relaxed. Increases in the size and diversity of pottery in Early Jōmon may well reflect increased ability to obtain surplus fish, to control labor, and an increased demand for fish oil for more elaborate and diverse feasting contexts.

Regardless of the significance or scale of the activity, our study shows that pottery retained its primary function despite substantial warming at the start of the Holocene, increased exploitation of the burgeoning forests, increased sedentism, and the proliferation of artefacts associated with plant processing and fishing. For this to happen, we suggest that pottery production, specifically for the exploitation of aquatic resources, must have been embedded in the social memory of these East Asian foragers for thousands of years, as a cultural norm. This dependable strategy was used by successive generations perhaps to mitigate against risks associated with environmental change, the adaptation to new forms of subsistence, social transformation and changes in territorial control. We hypothesise that this same functional driver was at least partly responsible for the long distance spread of pottery westwards across Eurasia through lacustrine and riverine ecological corridors in the early Holocene(45). But this needs formal testing.

Methods

One hundred and forty three ceramic vessels were obtained from different 9 stratigraphic phases at Torihama (Table S1). Each phase was dated by the associated pottery typology and independently through radiocarbon dating of associated organic artefacts (Table S3).

Lipid analysis of ceramic samples

Lipids were extracted and methylated in one-step with acidified methanol (46, 47). Briefly, methanol was added to 99 homogenized charred deposits (1mL to 10–30 mg) and 57 ceramic powders drilled (d. 2mm–5mm) from the sherd surface (4mL to 1g). The mixture was sonicated for 15 min, and then acidified with concentrated sulphuric acid (200 μ l). The acidified suspension was heated in sealed tubes for 4 h at 70 °C and then allowed to cool. The lipids were then extracted with *n*-hexane (3 \times 2 ml), and directly analysed by GC-MS and GC-C-IRMS using standard conditions and protocols (16, 25, 48). Alternatively, lipids from 4 homogenized charred deposits were extracted by alkali saponification (2 ml of sodium hydroxide (5% (w/v) in methanol) for 2 h at 70 °C). Saponified extracts were cooled, neutral lipids were removed (*n*-hexane, 3 \times 2ml), the extracts were acidified with HCl and the acid fraction was extracted (*n*-hexane, 3 \times 2ml) and methylated using BF₃-methanol complex (14% w/v, 200 μ l, 1h, 70°C). For GC-C-IRMS, instrument precision on repeated measurements was $\pm 0.3\text{‰}$ (s.e.m.) and the accuracy determined from in-house FAME and *n*-alkane isotope standards was $\pm 0.5\text{‰}$ (s.e.m.). All $\delta^{13}\text{C}$ values are expressed in per mil (‰) relative to the Vienna PeeDee Belemnite (VPDB) international standard. Where sufficient sample remained, solvent extraction was also carried out on drilled pottery sherds and crushed surface residues. Samples were sonicated three times with DCM:MeOH (2:1, v/v). The extracts were combined, and evaporated to dryness under a stream of N₂. Solvent extracted and a selection of acid-methanol extracted samples were silylated with BSTFA at 70 °C for 1 h, and then evaporated to dryness under a gentle stream of N₂. Derivatised samples were redissolved in *n*-hexane, and analysed directly by GC-MS as described previously (16, 25, 48).

Lipid analysis of faunal remains

Lipids were extracted and analysed by GC-c-IRMS from selected faunal remains at Torihama to provide additional comparative reference data (Fig. 3, Table S2) using previously described procedures (29). Exogenous lipids were first removed with dichloromethane/methanol (2/1 vol/vol; 3 \times 2 mL) from each bone sample (ca. 1g). After each solvent addition, samples were ultra-sonicated for 15 mins and then centrifuged at 867 \times g for 10 mins. The supernatant was removed and the remaining bone powder was dried completely under gentle stream of N₂ and then extracted, as a selection of modern animal tissues (ca. 30mg) and experimental cooking vessel (ca. 1g), using the acid-methanol procedure as outlined above for ceramics. The methylated fatty acids were analysed by GC-C-IRMS as described above. Modern reference samples were further corrected for the burning of fossil fuels (49) to allow comparison with archaeological data.

Bulk isotope analysis

Crushed surface residues (~1 mg) were analysed by elemental analysis IRMS as previously reported (48). Samples yielding less than 1% N were discarded and instrument precision on repeated measurements was $\pm 0.2\text{‰}$ (s.e.m.). $\delta^{13}\text{C}$, $\delta^{15}\text{N} = [(R_{\text{sample}}/R_{\text{standard}} - 1)] \times 1,000$, where $R = {}^{13}\text{C}/{}^{12}\text{C}$ and ${}^{15}\text{N}/{}^{14}\text{N}$. All sample measurements are expressed in per mil relative to VPDB for $\delta^{13}\text{C}$ values and air N_2 for $\delta^{15}\text{N}$ values.

Plant microfossil analyses

Surface residues (ca. 1.5 to 7 mg) were treated with H_2O_2 ; 3%, 10mL; 15-30 min and manually disaggregated. Samples were then centrifuged (1000 xg; 3 min) and the supernatant reduced to 2ml. The remaining residues were washed three times with UltraPure water and made up to 1mL suspensions. This supernatant, containing liberated phytoliths and starches was added to microscope slides and left to dry at room temperature. Samples were mounted in glycerol before viewing in rotated planes using an inverted polarising microscope fitted with a digital camera. All silica bodies and starches were counted by scanning the mounted specimen in a grid pattern at a magnification of x400.

Acknowledgements

We thank the Arts and Humanities Research Council (The Innovation and Development of Pottery in East Asia, grant number AH/L00691X/1), the Leverhulme trust (F/00 152/AM), the FP7-PEOPLE-2013-IIF program (Project ID: 624467: PONTE) and the Japanese Society for the Promotion of Science (PE 11560) for their support. Sample collection was also supported by grants from the British Academy and Wenner-Gren Foundation. We thank Anu Thompson, Karine Taché and Tom Farrell for their assistance with aspects of the laboratory work.

References

1. Wu X, et al. (2012) Early Pottery at 20,000 Years Ago in Xianrendong Cave, China. *Science* 336:1696–1700.
2. Cohen DJ (2013) The Advent and Spread of Early Pottery in East Asia: New Dates and New Considerations for the World's Earliest Ceramic Vessels. *Journal of Austronesian Studies* 4(2):55–90.
3. Gibbs K (2015) Pottery Invention and Innovation in East Asia and the Near East. *Cambridge Archaeological Journal* 25(01):339–351.
4. Hayden B (1995) The emergence of prestige technologies and pottery. *The Emergence of Pottery, Smithsonian Institution Press, Washington, DC*:257–266.
5. Taniguchi Y (2011) *Rethinking the dawn of the Jomon culture* (Douseisha, Tokyo).
6. Miyoshi N, Yano N (1986) Late Pleistocene and Holocene vegetational history of the Ohnuma moor in the Chugoku mountains, western Japan. *Rev Palaeobot Palynol* 46(3–4):355–376.
7. Kobayashi T, Kaner S, Nakamura O (2004) *Jomon reflections: forager life and culture in the*

prehistoric Japanese archipelago (Oxbow, Oxford).

8. Jordan P, Zvelebil M (2009) Ex Oriente Lux: The Prehistory of Hunter-Gatherer Ceramic Dispersals. *Ceramics before Farming: The Dispersal of Pottery Among Prehistoric Eurasian Hunter-Gatherers*, eds Jordan P, Zvelebil M (Left Coast Press, Walnut Creek), pp 33–90.
9. Craig OE, et al. (2013) Earliest evidence for the use of pottery. *Nature* 496:351–354.
10. Hongo H (1989) Freshwater fishing in the early jomon period (Japan): An analysis of fish remains from the torihama shell-mound. *J Archaeol Sci* 16(4):333–354.
11. Inaba M (1981) Sika deer and wild boar remains from Torihama Shell Midden. *Site Report of Torihama Shell Midden Excavation in 1982*:65–81.
12. Uchiyama J Why did foragers make pottery?: Investigating the role of Incipient Jomon ceramics within wider subsistence strategies, based on a zooarchaeological analysis of the Torihama site. *Circumpolar Ceramics: A New Research Paradigm for Hunter-Gatherer Technology*, eds Jordan P, Gibbs K (Cambridge University Press Cambridge).
13. Uchiyama J (2006) The environmental troublemaker's burden?: Jomon perspectives on foraging land use change. *Beyond Affluent Foragers: Rethinking Hunter-Gatherer Complexity*, eds Grier C, Kim J, Uchiyama J (Oxbow books, Oxford), pp 136–168.
14. Tanabe S, Nakanishi T, Yasui S (2010) Relative sea-level change in and around the Younger Dryas inferred from late Quaternary incised-valley fills along the Japan Sea. *Quat Sci Rev* 29:3956–3971.
15. Evershed RP, Copley MS, Dickson L, Hansel FA (2008) Marine animal products and other commodities containing polyunsaturated fatty acids in pottery vessels. *Archaeometry* 50(1):101–113.
16. Hansel FA, Copley MS, Madureira LAS, Evershed RP (2004) Thermally produced ω -(o-alkylphenyl)alkanoic acids provide evidence for the processing of marine products in archaeological pottery vessels. *Tetrahedron Lett* 45(14):2999–3002.
17. Schröder M, Vetter W (2010) GC/EI-MS Determination of the Diastereomer Distribution of Phytanic Acid in Food Samples. *J Am Oil Chem Soc* 88(3):341–349.
18. Lucquin A, Colonese AC, Farrell TFG, Craig OE Utilising phytanic acid diastereomers for the characterisation of archaeological lipid residues in pottery samples. *Tetrahedron Lett* 57(6): 703–707. doi:10.1016/j.tetlet.2016.01.011.
19. Yoshida K, et al. (2013) Dating and Stable Isotope Analysis of Charred Residues on the Incipient Jomon Pottery (Japan). *Radiocarbon* 55(2–3):1322–1333.
20. Kunikita D, et al. (2013) Dating Charred Remains on Pottery and Analyzing Food Habits in the Early Neolithic Period in Northeast Asia. *Radiocarbon* 55(2–3):1334–1340.
21. Heron C, Craig OE (2015) Aquatic Resources in Foodcrusts: Identification and Implication. *Radiocarbon* 57(4). doi:10.2458/azu_rc.57.18454.
22. Taché K, Craig OE (2015) Cooperative harvesting of aquatic resources and the beginning of

- pottery production in north-eastern North America. *Antiquity* 89(343):177–190.
23. Craig OE, et al. (2011) Ancient lipids reveal continuity in culinary practices across the transition to agriculture in Northern Europe. *Proceedings of the National Academy of Sciences* 108:17910–17915.
 24. Yoneda M, et al. (2004) Isotopic evidence of inland-water fishing by a Jomon population excavated from the Boji site, Nagano, Japan. *J Archaeol Sci* 31(1):97–107.
 25. Craig OE, et al. (2012) Distinguishing wild ruminant lipids by gas chromatography/combustion/isotope ratio mass spectrometry. *Rapid Commun Mass Spectrom* 26:2359–2364.
 26. Spangenberg JE, Jacomet S, Schibler J (2006) Chemical analyses of organic residues in archaeological pottery from Arbon Bleiche 3, Switzerland – evidence for dairying in the late Neolithic. *J Archaeol Sci* 33(1):1–13.
 27. Cramp LJE, et al. (2014) Immediate replacement of fishing with dairying by the earliest farmers of the northeast Atlantic archipelagos. *Proceedings of the Royal Society of London B: Biological Sciences* 281(1780):20132372.
 28. Outram AK, et al. (2009) The earliest horse harnessing and milking. *Science* 323(5919):1332–1335.
 29. Colonese AC, et al. (2015) Archaeological bone lipids as palaeodietary markers. *Rapid Commun Mass Spectrom* 29(7):611–618.
 30. Dudd SN (1999) Molecular and isotopic characterisation of animal fats in archaeological pottery. Dissertation (University of Bristol). Available at: <http://ethos.bl.uk/OrderDetails.do?uin=uk.bl.ethos.299331>.
 31. Miyata Y, Horiuchi A, Takada H, Nakamura T (2015) Evaluation of sea mammals as marine resource by lipid analysis in pottery excavated from Mawaki archaeological site, Ishikawa, Japan, pp 40–41.
 32. Negishi JN, Katsuki K, Kume M, Nagayama S, Kayaba Y (2014) Terrestrialization alters organic matter dynamics and habitat quality for freshwater mussels (Unionoida) in floodplain backwaters. *Freshw Biol* 59(5):1026–1038.
 33. Saul H, et al. (2012) A systematic approach to the recovery and identification of starches from carbonised deposits on ceramic vessels. *J Archaeol Sci* 39:3483–3492.
 34. Saul H, et al. (2013) Phytoliths in pottery reveal the use of spice in European prehistoric cuisine. *PLoS One* 8(8):e70583.
 35. Yasuda Y, et al. (2004) Environmental variability and human adaptation during the Lateglacial/Holocene transition in Japan with reference to pollen analysis of the SG4 core from Lake Suigetsu. *Quat Int* 123–125(0):11–19.
 36. The Torihama Shell midden Research Group (1985) *The Torihama Shell midden -a preliminary report of the excavation in 1984*, (Fukui prefectural education board and Wakasa History and Folklore Museum, Fukui).

37. Keally CT, Taniguchi Y, Kuzmin YV, Shewkomud IY (2004) Chronology of the beginning of pottery manufacture in East Asia. *Radiocarbon* 46:345–351.
38. Kaner S (2009) Long-term innovation: The Appearance and Spread of Pottery in the Japanese Archipelago. *Ceramics Before Farming: The Dispersal of Pottery Among Prehistoric Eurasian Hunter-Gatherers*, eds Jordan P, Zvelebil M (Left Coast Press, Walnut Creek).
39. Rice PM (1999) On the origins of pottery (Ceramic technology among complex hunter-gatherers). *Journal of Archaeological Method and Theory* 6:1–54.
40. Ikawa-Smith F (1976) On Ceramic Technology in East Asia. *Curr Anthropol* 17:513–515.
41. Isaksson S (2010) Vessels of change : A long-term perspective on prehistoric pottery-use in southern and eastern middle Sweden based on lipid residue analyses. *Current Swedish Archaeology* 17:131–149.
42. Horiuchi A, Miyata Y, Kamijo N, Cramp L, Evershed RP (2015) A Dietary Study of the Kamegaoka Culture Population during the Final Jomon Period, Japan, Using Stable Isotope and Lipid Analyses of Ceramic Residues. *Radiocarbon* 57(4):721–736.
43. Hayashi K (1994) The beginning of Jomon pottery. *Emergences of Pottery and Its Context in the Japan Sea Area*, eds Ono A, Toshinari S (Yuzankaku), pp 31–44.
44. Kuhnlein HV, Chan A, Thompson JN, Nakai S (1982) 00LIGAN GREASE: A NUTRITIOUS FAT USED BY NATIVE PEOPLE OF COASTAL BRITISH COLUMBIA. Available at: http://www.mcgill.ca/files/cine/J_EthnoBiol2_2_154-161.pdf.
45. Gibbs K, Jordan P (2013) Bridging the Boreal Forest: Siberian archaeology and the emergence of pottery among prehistoric hunter-gatherers of northern Eurasia. *Sibirica* 12(1):1–38.
46. Correa-Ascencio M, Evershed RP (2014) High throughput screening of organic residues in archaeological potsherds using direct acidified methanol extraction. *Anal Methods* 6(5):1330–1340.
47. Papakosta V, Smittenberg RH, Gibbs K, Jordan P, Isaksson S (2015) Extraction and derivatization of absorbed lipid residues from very small and very old samples of ceramic potsherds for molecular analysis by gas chromatography-mass spectrometry (GC-MS) and single compound stable carbon isotope analysis by gas chromatography-combustion-isotope ratio mass spectrometry (GC-C-IRMS). *Microchem J* 123(196–200).
48. Craig OE, et al. (2007) Molecular and isotopic demonstration of the processing of aquatic products in northern European prehistoric pottery. *Archaeometry* 49(1):135–152.
49. Friedli H, Lotscher H, Oeschger H, Siegenthaler U, Stauffer B (1986) Icecore record of the ¹³C/¹²C ratio of atmospheric CO₂ in the past two centuries. *Nature* 324:237–238.
50. Kobayashi K (2007). Dates for the First Half of the Jomon Period. *Bulletin of the National Museum of Japanese History* 137:89-133. In Japanese.
51. Suzuki M, Noshiro S, Kobayashi K, Kudo Y, Ajimoto M & Amitani K (2012) Radiocarbon dating of an excavated wood sample of *Toxicodendron vernicifluum* from the Torihama

- Shell Midden site, Fukui Prefecture. *Japanese Journal of Historical Botany* 21(2): 67-71. In Japanese.
52. Murakami N & Onbe S (2008) Radiocarbon Dates of cord-marked pottery from the Torihama shell midden. *Bulletin of the Wakasa History and Folklore Museum* H19: 19-20. In Japanese.
53. The Torihama Shell midden Research Group (1981) *The Torihama Shell midden -a preliminary report of the excavation in 1980*, (Fukui prefectural education board and Wakasa History and Folklore Museum, Fukui:). In Japanese.
54. Imamura M ed. (2004) *Establishment of high resolution dating of Yayoi period*. (the National Museum of Japanese History, Chiba:). In Japanese.
55. Nishimoto T ed. (2007) *The origin of Yayoi agriculture in East Asia*. (the National Museum of Japanese History, Chiba:). In Japanese.
56. Onbe S, Miyata Y & Kobayashi K (2012) ^{14}C dating of Incipient and Initial Jomon pottery in Tokai region. *Bulletin of the National Museum of Japanese History* 172:197-208. In Japanese.
57. Hitoki E & Toshio N (2014) *Marine reservoir effect using radiocarbon dates of molluscan shells and terrestrial remains at the Torihama Shell Midden, Fukui*. Summaries of Researches Using AMS at Nagoya University XXV: 44-48. In Japanese.
58. Reimer PJ, et al. (2013) Intcal13 and marine13 radiocarbon age calibration curves 0-50,000 years cal BP. *Radiocarbon* 55(4):1869-1887.
59. Ramsey CB & Lee S (2013) Recent and planned developments of program OXCAL. *Radiocarbon* 55(2-3):720-730.

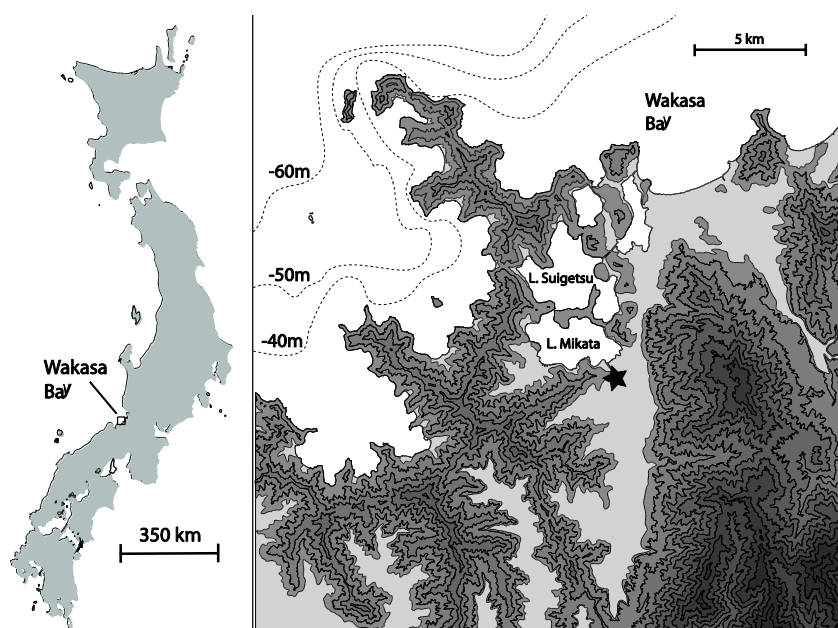


Fig. 1. Location of the Torihama site. Dotted contours indicate the bathymetry relative to present mean sea level. The coastline corresponding to the Incipient period was between ca. 65-50m below present-day sea level (14). Topography is shaded by 50m increments. Map courtesy of Wakasa Mikata Jōmon Museum.

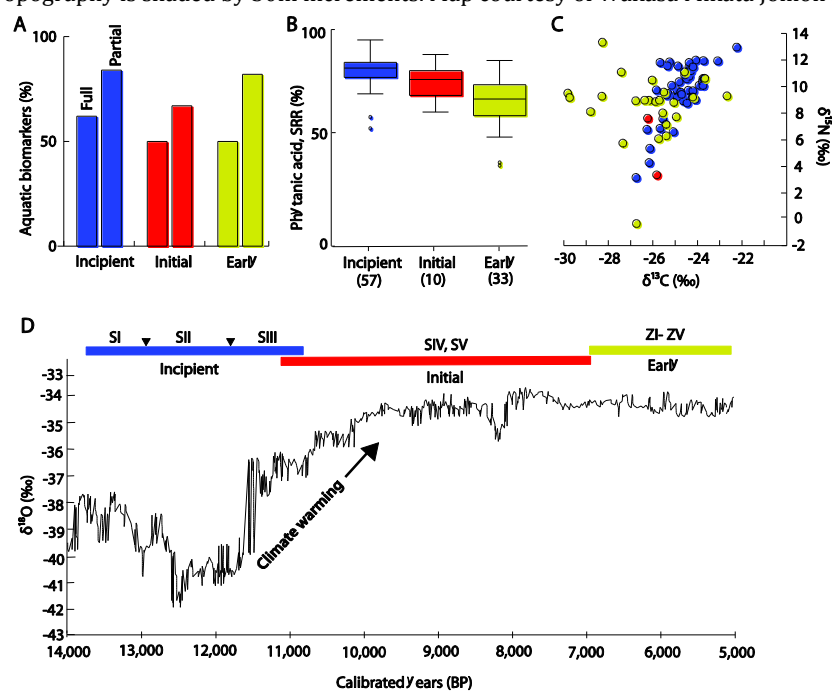


Fig. 2. Correspondence between the phases of pottery at Torihama and their molecular and isotopic characteristics. (A) Proportion of pots with an interpretable lipid residue ($> 5\mu\text{g g}^{-1}$) containing full ($\text{C}_{18}\text{-C}_{20}$ APAAs and at least on isoprenoid fatty acid) or partial sets (C_{18} APAAs and at least one isoprenoid fatty acid) of aquatic biomarkers. (B) Boxplot showing the range in the contribution of the *SRR* diastereomers of phytanic acid with number of observations indicated for each period. (C) Plot of bulk isotope values obtained from analysis of carbonised deposits. (D) Showing the pottery sequence at Torihama based on available radiocarbon dates (Table S3) against the Greenland ice-core oxygen isotope record, with lower $\delta^{18}\text{O}$ values generally corresponding to lower temperatures.

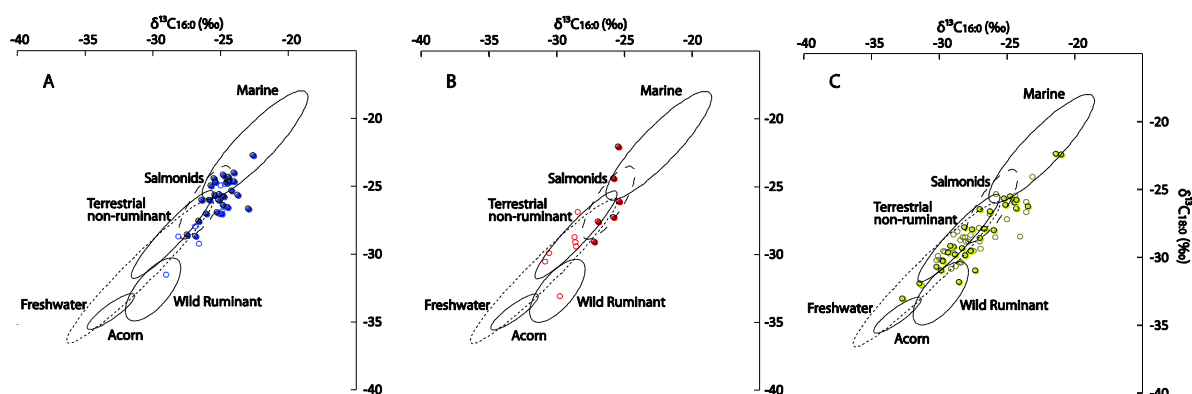


Fig. 3. $\delta^{13}\text{C}$ values of $\text{C}_{16:0}$ and $\text{C}_{18:0}$ *n*-alkanoic acids extracted in three phases of Jōmon pottery from Torihama. a) Incipient Jōmon, b) Initial Jōmon, c) Early Jōmon. The data are compared with reference ranges for authentic reference lipids from modern tissues and archaeological bone (Table S2)(9, 22, 25–31) (66.7% confidence). Samples with the full range of aquatic biomarkers are shown by filled circles.

Table 1: Table summarising organic residue analysis results by period in relation to the relative frequency of pottery and description of stone artefacts, plant and faunal remains

Period Associates dates ($\times 10^3$ cal BP)	Samples analysed	Samples yielding lipids*	Samples yielding aquatic biomarkers (with partial set)	Relative pottery abundance to stone artefact†	Stone artefact assemblage‡	Species representation‡ (aquatic to terrestrial)§
Incipient 13.8-10.9	64	94%	62% (84%)	0.7	Projectiles, net sinkers, grinding stones	Freshwater, marine, terrestrial (a/t = 1.8)
Initial 11.1-8.0	15	80%	50% (67%)	0.4	Projectiles, net sinkers and grinding stones	(n/a)
Early 7.9-5.1	80	84%	50% (82%)	2.0	Net sinkers, grinding stones, projectiles	Marine, freshwater, terrestrial (a/t = 3.6).

*Greater than $0.2\mu\text{g}\cdot\text{mg}^{-1}$

†Pottery weights for the area excavated were estimated from analysis of a partial sample (12m^2) with layers S1 to Z1. It is expressed relative to the amount of stone artefact.

‡Order of frequency

§a/t - Species representation for aquatic versus terrestrial animals in terms of minimum number of individuals (MNI).