



Deposited via The University of Sheffield.

White Rose Research Online URL for this paper:

<https://eprints.whiterose.ac.uk/id/eprint/99544/>

Version: Accepted Version

---

**Article:**

Wilkinson, R.D., Steiper, M.E., Soligo, C. et al. (2011) Dating Primate Divergences through an Integrated Analysis of Palaeontological and Molecular Data. *Systematic Biology*, 60 (1). pp. 16-31. ISSN: 1063-5157

<https://doi.org/10.1093/sysbio/syq054>

---

**Reuse**

Items deposited in White Rose Research Online are protected by copyright, with all rights reserved unless indicated otherwise. They may be downloaded and/or printed for private study, or other acts as permitted by national copyright laws. The publisher or other rights holders may allow further reproduction and re-use of the full text version. This is indicated by the licence information on the White Rose Research Online record for the item.

**Takedown**

If you consider content in White Rose Research Online to be in breach of UK law, please notify us by emailing [eprints@whiterose.ac.uk](mailto:eprints@whiterose.ac.uk) including the URL of the record and the reason for the withdrawal request.

Running head: DATING PRIMATE DIVERGENCES

# Dating Primate Divergences through an Integrated Analysis of Palaeontological and Molecular Data

Richard D Wilkinson<sup>1, \*</sup>, Michael E Steiper<sup>2,3,4,5</sup>, Christophe Soligo<sup>6</sup>, Robert D Martin<sup>7</sup>, Ziheng Yang<sup>8</sup>, and Simon Tavaré<sup>9</sup>

<sup>1</sup>*School of Mathematical Sciences, University of Nottingham, University Park Nottingham NG7 2RD, United Kingdom. Email: r.d.wilkinson@nottingham.ac.uk. Telephone: 00441158467413.*

*\* Corresponding author*

<sup>2</sup>*Department of Anthropology, Hunter College, City University of New York, New York (CUNY), USA*

<sup>3</sup>*Program in Anthropology, The Graduate Center, CUNY, NY, USA*

<sup>4</sup>*Program in Biology, The Graduate Center, CUNY, NY, USA*

<sup>5</sup>*New York Consortium in Evolutionary Primatology (NYCEP)*

<sup>6</sup>*Department of Anthropology, University College London, 14 Taviton Street, London WC1H 0BW, United Kingdom*

<sup>7</sup>*Department of Anthropology, The Field Museum, 1400 S. Lake Shore Drive, Chicago 60605-2496, USA*

<sup>8</sup>*Department of Biology, University College London, Gower Street, London WC1E 6BT, United Kingdom*

<sup>9</sup>*DAMTP, University of Cambridge, Centre for Mathematical Sciences, Wilberforce Road, Cambridge CB3 0WA, United Kingdom*

## Abstract

Estimation of divergence times is usually done using either the fossil record, or sequence data from modern species. We provide an integrated analysis of palaeontological and molecular data to give estimates of primate divergence times that utilize both sources of information. The number of preserved primate species discovered in the fossil record, along with their geological age distribution, is combined with the number of extant primate species to provide initial estimates of the primate and anthropoid divergence times. This is done by using a stochastic forwards-modelling approach where speciation and fossil preservation and discovery are simulated forward in time. We use the posterior distribution from the fossil analysis as a prior distribution on node ages in a molecular analysis. Sequence data from two genomic regions (*CFTR* on human chromosome 7 and the *CYP7A1* region on chromosome 8) from 15 primate species is used with the birth-death model implemented in *mcmctree* in *PAML* to infer the posterior distribution of the ages of 14 nodes in the primate tree. We find that these age estimates are older than previously reported dates for all but one of these nodes. To perform the inference, a new approximate Bayesian computation algorithm is introduced, where the structure of the model can be exploited in an ABC-within-Gibbs algorithm to provide a more efficient analysis.

*Key words:* primate divergence, approximate Bayesian computation, palaeontological data, molecular phylogeny, inferring node ages

Fossil evidence is the only direct source of information about long-extinct species and their evolution. Morphological similarities between extant species and fossil remains are used to infer the existence of ancestral species during the geological period to which the fossil is allocated. Conditional on there being no classification or dating error, the fossil's age provides a minimum bound for the divergence time of the evolutionary lineage it represents.

Sequence data from extant species provide an indirect source of information about evolutionary history. The pattern and variability observed in homologous sequences of DNA from different species contains traces of the history of the divergence and evolution of the phylogeny, and mathematical models of evolution can be used to combine our knowledge of genetics with the sequence data to extract information about evolutionary history, particularly divergence times. Many methods and models have been proposed with this aim, but all rely in some way on fossil evidence, as an external source of information must be used to calibrate the substitution rate. Fossil evidence is used to provide initial estimates for node ages in phylogenetic trees, which are then updated in light of molecular evidence. Yang and Rannala (2006) found that, for divergence time estimates based on sequence data, the largest source of uncertainty came from the fossil calibration dates used.

Although fossils provide good explicit minimum bounds on the age of a clade, maximum bounds need to be inferred rather than measured, and thus are inherently uncertain. Uncertainty about a maximum bound on the node age has been dealt with in various ways in molecular analyses,

typically by relying upon a subjective judgement about the node age based on the age of the oldest fossil (i.e., a maximum bound, or the weight of the tail in a more general prior distribution).

In this paper we use a database of recorded fossil species combined with a model of speciation to find a model-based estimate of node ages. These estimates are then used as prior distributions for estimating molecular divergence times. The benefit of introducing an element of process modelling into the analysis of the fossil record is that it moves the subjective judgements further from important quantities and allows us to utilise more of the fossil record, thus letting data play a larger role in the analysis. In determining the expected gap between the age of the oldest fossil and the divergence time, a key influence is exerted by rates of fossil preservation and discovery, which are unknown and believed to vary through time (e.g., Foote et al., 1999; Smith and Peterson, 2002; Tavaré et al., 2002; Soligo et al., 2007; Paul, 2009). We use the pattern of species diversity through the Cenozoic and the number of extant primate species to estimate the sampling rate and the divergence time of the primates. The posterior distributions from the fossil analysis are used as the prior distribution in the molecular analysis to estimate a posterior distribution for the divergence time that uses both the fossil and molecular records more fully than previous analyses.

The paper is organised as follows. The first section describes the analysis of the fossil record. The following section contains the molecular analysis and the final section contains a discussion. The details of the inference procedure used in the analysis of the fossil data are given in the

appendix, where we introduce a new variant on the MCMC-ABC (Marjoram et al., 2003) algorithm in order to improve the efficiency of our analysis.

## USING THE FOSSIL RECORD

Fossil calibrations are essential when dating evolutionary events. Even if the analysis primarily uses molecular data, fossil evidence is used to provide prior distributions for one or more nodes in the phylogeny. This information is then used to calibrate the molecular clock, and thus has consequences for estimation of other node ages. Early analyses using the molecular clock to date divergence times typically treated the oldest fossil representative as if it estimated the age of the node without error (Graur and Martin, 2004; Hedges and Kumar, 2004). This progressed to introducing uncertainty by specifying a range of possible values with hard bounds representing the limits of the uncertainty (Thorne et al., 1998), with zero probability assigned to ages outside of this range. Fossil evidence is well suited to providing a good hard minimum bound on the age of a node based on the oldest fossil representative, with the level of accuracy limited only by the accuracy of taxonomic assignment of the fossil and of the dating procedure used. However, the fossil record does not directly give any information regarding a maximum bound on the age (Benton and Donoghue, 2007; Steiper and Young, 2008). Thus, hard bounds are often either overconfident, where they are set too low, or too conservative, where unrealistically high maximum bounds are used. Yang and Rannala (2006)

moved beyond the use of uniform distributions for calibration dates to allow general prior distributions, which can incorporate more information about the calibration age. These allow for most of the probability to be placed on dates near to the minimum bound, but with long tails to account for the a priori unlikely event that the node age is actually much older than the fossil evidence suggested. They chose prior distributions by fitting a parametric form (a gamma distribution) to estimated maximum and minimum bounds on the node age, allowing for 5% uncertainty outside this range.

However, the fossil record contains more information about a node age than that contained solely in the oldest fossil ascribed to a particular lineage. The age of the oldest fossil may be the single most informative piece of data, but other parts of the record can help reduce the uncertainty in any estimate and provide a more nuanced picture. By considering more of the fossil record, we can move from using prior distributions based on the oldest fossil, to distributions based on a wider appreciation of the fossil record and its underlying processes. The distribution of fossil ages contains information about the diversity (number of species) of a phylogeny through time. When combined with extant diversity counts, this can be used to infer the sampling rate or completeness of the fossil record (Tavaré et al., 2002; Soligo et al., 2007; Wilkinson and Tavaré, 2009). For periods and phylogenies with high sampling rates, we expect the age of the oldest known fossil to be close to the divergence time of the phylogeny, whereas if the sampling rate is low, we expect the range of values possible for the gap between the oldest fossil and the root of the phylogeny it represents to be much more variable. For terrestrial vertebrates, the completeness (the

proportion of species that have been preserved and then discovered in the fossil record) is generally believed to be low. For example, Martin (1993) and Tavaré et al. (2002) estimate the completeness of the primate fossil record to be less than 7%, compared with an estimate of 29% for dinosaurs (Wang and Dobson, 2006).

### *Model for the Fossil Data*

The model for the fossil data can be thought of in two parts: (i) speciation and (ii) fossilisation and recovery. The speciation model describes the growth of the number of species (the diversity) from a common ancestor to the observed extant diversity, whereas the fossilisation and recovery model describes how the phylogeny is recorded in the known fossil record.

To model speciation we use a continuous-time inhomogeneous binary Markov branching process (Harris, 1963). To aid description we use the language of family trees and refer to the direct descendants of a species as its offspring. Let  $Z(t)$  denote the number of species extant at time  $t$ , where  $t = 0$  denotes the present. The age of the oldest known fossil representative is used as an absolute minimum bound on the age of the clade. The root of the tree is placed at this age plus  $\tau$  million years, where  $\tau$  represents the temporal gap between the oldest primate fossil and the primate divergence time. We assume that two species are present at this time and that each species lives for an exponentially distributed period of time with mean  $1/\lambda$  before becoming extinct. Upon its extinction, at time  $t$  say, it is replaced by either zero or two new species with probability  $p_0(t)$  or  $p_2(t) = 1 - p_0(t)$ ,

respectively. The birth and death probabilities  $p_0(t)$  and  $p_2(t)$  can be determined by fixing a parametric form for the expected population size at time  $t$ , i.e.,  $\mathbb{E}Z(t) = f(t; \boldsymbol{\psi})$ , where  $\boldsymbol{\psi}$  are unknown parameters to be estimated. We initialise the branching process with two species, and consider the tree to have two sides, corresponding to Haplorhini and Strepsirrhini in the primate phylogeny. Because the root of the tree represents the crown-divergence time, we require both sides of the tree to be present at time  $t = 0$ , modelling the fact that there are extant Haplorhini and Strepsirrhini. We condition both sides of the tree on non-extinction by using rejection sampling (Ripley, 1987), by simply disregarding simulations that go extinct on either side of the tree. Note that if we do not condition on non-extinction, we would be modelling a point of divergence along the stem lineage, defined by the taxa included in the fossil data, rather than the crown-divergence time (Soligo et al., 2007).

This model provides simulated numbers of species extant through time, given a value for the crown divergence time. To simulate sample fossil data sets, we introduce two different observation models, a simple binomial model, and a more complex Poisson sampling model. Note that it is not possible to date fossils precisely. The fossil data shown in Table 1 are resolved at the epochal level, and for each epoch we have counts of the number of generally recognized primate morphospecies known to have lived during that epoch. Our observation models simulate the number of fossils discovered in each of the 14 epochs in the Cenozoic  $\{D_i\}_{i=1}^{14}$  given the number of species  $\{N_i\}_{i=1}^{14}$ . In the binomial model each species in epoch  $i$  has probability  $\alpha_i$  of being preserved and then discovered as a fossil,

regardless of the length of time the species was extant. This gives  $D_i \sim \text{Binomial}(N_i, \alpha_i)$ , where  $N_i$  is the number of species extant during any part of epoch  $i$ .

The Poisson model assumes that each species present in any given epoch has an equal probability of being discovered as a fossil for each year it is extant. Consequently, longer-lived species will have a higher probability of preservation and discovery than shorter-lived species. Assume that fossil finds occur along the branches present in epoch  $i$  as the points of a Poisson process of rate  $\beta_i$ . Each species is recorded at most once during an epoch, regardless of whether there are multiple points along its branch, so that a species that lived for duration  $t$  in epoch  $i$  has probability  $1 - e^{-\beta_i t}$  of being discovered in the fossil record during that epoch. It is known that the rates of fossil preservation and discovery have varied through time, for example because rocks from different geological epochs are not present in accessible locations in equal abundance (Raup, 1976; Peters and Foote, 2001; Smith and Peterson, 2002; McGowan and Smith, 2008). Added to this are complications regarding sampling locations (Western Europe and North America are better sampled than Africa or Asia, for instance) and variation in habitable latitudes as climate and the availability of dispersal routes changed through time. For example, primates are thought to have originated in more southern latitudes, spreading northwards at the beginning of the Eocene, and again in the Miocene, as a result of globally warmer climates (and of developing land bridges in the case of the Miocene), while retreating from more northern latitudes as a result of climate cooling, for example towards the end of the Eocene and beginning

of the Oligocene (e.g., Krause and Maas, 1990; Martin, 1993; Soligo and Martin, 2006; Andrews and Kelley, 2007; Soligo, 2007; Martin et al., 2007). For this reason, we allow the observation process to vary in intensity between epochs, and write  $\boldsymbol{\alpha} = (\alpha_1, \alpha_2, \dots, \alpha_{14})$  and  $\boldsymbol{\beta} = (\beta_1, \dots, \beta_{14})$ .

Both the binomial and Poisson sampling models are phenomenological in nature, rather than process models of the complex underlying processes. Fossil deposition and preservation rates will depend on a variety of factors for each species, such as habitat, location, and population size. Similarly, the classification of fossils and the identification of new species are processes prone to error, with opinions over dates and classifications changing over time. It would be hard to model all these processes as the data available for parameter estimation is limited. Instead, we use simple statistical models that try to approximate the net effect of the interaction of the various processes, in order to find a mathematical description of the observations without paying too much attention to the individual processes.

An important extension to this model is to consider the effect of the mass-extinction event that took place at the Cretaceous-Tertiary (K-T) boundary 65 Ma (1 Ma =  $10^6$  years ago). There is no direct fossil evidence as to whether primates existed during the Cretaceous, so the importance of the K-T boundary when dating the divergence time is unclear. However, if primates lived at this time it is highly likely they were also affected by the event. We can include the effect of the K-T crash by making each species in the simulation extinct with probability  $p$  at the K-T boundary at  $t = -65$  Myr (millions of years). Extinctions are assumed to occur independently for each species, and we assume that species wiped out at the K-T boundary

have no offspring. Thus, the diversity in the simulation just after the K-T boundary has a binomial distribution with parameters  $(n, p) = (Z(-65), p)$ . We treat  $p$  as an unknown parameter and estimate it in the inference. We estimate the divergence time both with and without ( $p = 0$ ) the K-T crash model to examine its importance.

### *Inference*

The previous section described the forwards model, a stochastic mapping from unknown parameters  $\boldsymbol{\theta} := (\tau, \boldsymbol{\psi}, \boldsymbol{\beta}, \boldsymbol{\alpha}, \lambda, p)$  to sample fossil data sets  $\{D_i\}_{i=1}^{14}$ . The model is stochastic and any particular combination of parameters can lead to a wide variety of behaviour. To estimate divergence times we must solve the inverse problem and use the fossil observations  $\mathcal{D}_{obs}$  and the number of extant species  $N_0$  to learn the unknown parameters. We use a Bayesian approach and give all unknown parameters prior distributions (described in the results section), and then find the posterior distribution of the parameters given the data, denoted  $\pi(\boldsymbol{\theta}|\mathcal{D})$ .

Inference using this model is difficult and requires non-standard methods because the likelihood function  $l(\boldsymbol{\theta}; \mathcal{D}_{obs}) = \mathbb{P}(\mathcal{D}_{obs}|\boldsymbol{\theta})$  is unknown (Kendall, 1948). Without an explicit mechanism for calculating the likelihood, standard inference approaches such as Markov Chain Monte Carlo or importance sampling are not possible. Instead we use a *likelihood-free* approach, known as *approximate Bayesian computation* (ABC) (Beaumont et al., 2002; Marjoram et al., 2003; Sisson et al., 2007).

The main idea behind ABC is sufficient for understanding our inference

approach. The simplest approximate Bayesian computation algorithm is based upon the rejection algorithm. We draw parameter  $\theta$  from its prior distribution, simulate sample data  $\mathcal{D}$  using this parameter setting, and accept the parameter into our sample if the simulated data are a close approximation to the observed data. To define ‘close’ we require a metric  $\rho(\cdot, \cdot)$  on the state space and a tolerance  $\epsilon$ , and we accept  $\theta$  if  $\rho(\mathcal{D}, \mathcal{D}_{obs}) \leq \epsilon$ .

This algorithm is not exact. Accepted  $\theta$  values do not form a sample from the posterior distribution  $\pi(\theta|\mathcal{D})$ , but from some distribution that is an approximation to it, where the accuracy of the algorithm depends on  $\rho$  and the tolerance  $\epsilon$ . The tolerance  $\epsilon$  represents a trade-off between computability and accuracy; large  $\epsilon$  values will mean more acceptances and will enable us to generate samples more quickly, but the distribution obtained may be a poor approximation to  $\pi(\theta|\mathcal{D})$ . Small  $\epsilon$  values will mean that the approximation is more accurate, but the acceptance rate will be lower and so we will require more computer time to generate a sample of a given size. To choose a value of  $\epsilon$ , we must make a compromise between the time and computer power available, and the desired accuracy. Our choice of metric and tolerance are given in the results section.

The standard ABC approach cannot be applied directly to the problem here, as the number of unknown parameters is too large, and so any naive search of the parameter space will spend most of its time in regions of low posterior probability. Instead, we use a more efficient approach and develop an ABC-within-Gibbs sampler that exploits some of the known model structure. Details are given in the appendix.

*Dating multiple divergence times.* — The primate fossil record is poor, and is limited in its ability to constrain estimates of divergence times. However, by using as much of the record as possible we can hope to constrain the estimates more than would be possible solely using the age of the oldest fossil ascribed to a lineage. Morphological detail in the fossils is used to classify each fossil into a subgroup of species and this information can be used to date multiple divergence times simultaneously. We estimate the joint distribution of the crown primate and anthropoid divergences using an optimal subtree selection algorithm. The fossil data set in Table 1 contains two sets of numbers. The first grouping gives the number of crown-primate species discovered,  $\mathcal{D}_{obs} = (D_1, \dots, D_{14})$ , whereas the second grouping gives the number of crown-anthropoid species,  $\mathcal{A}_{obs} = (A_1, \dots, A_{14})$ . Notice that  $D_k \geq A_k$  for all  $k$ , as anthropoids are a subset of the primates. We let  $\tau$  denote the temporal gap between the oldest primate fossil and the last common ancestor (LCA) of the extant primates and let  $\tau^*$  denote the temporal gap between the oldest anthropoid (platyrrhine-catarrhine) fossil and the LCA of the anthropoids. Our approach to inferring  $\tau^*$  is based on finding the subtree with fossil counts that most closely match the anthropoid fossil counts  $\mathcal{A}_{obs}$ . If the distance between simulated and real anthropoid fossil counts  $\rho(\mathcal{A}_{obs}, \mathcal{A})$  is less than tolerance  $\epsilon_2$ , we measure the temporal gap from the base of this subtree to the start of the Late Eocene interval. This is then our estimate for  $\tau^*$ . We require that the root of the subtree (the death time of the anthropoid LCA) occurs earlier than the beginning of the Late-Eocene, 37 Ma. We must also condition the subtree on non-extinction and check that both branches

leading from the subtree root have extant descendants, as one side of the subtree represents the platyrrhini and the other the catarrhini, and both of these groups have extant representatives. We refer to this approach as *Optimal Subtree Selection (OSS)*. A rejection-based ABC algorithm for inference would be

*Optimal Subtree Selection (OSS)*

1. Draw parameters  $\theta = (\tau, \alpha, \psi, p, \lambda)$  from  $\pi(\cdot)$ .
2. Simulate a tree and fossil finds using parameter  $\theta$ . Count the number of simulated fossils in each interval,  $\mathcal{D}' = (D'_1, \dots, D'_{14})$ .
3. Calculate the value of the metric  $\rho(\mathcal{D}_{obs}, \mathcal{D}')$ . If

$$\begin{aligned} \rho(\mathcal{D}_{obs}, \mathcal{D}') &\leq \epsilon_1, && \text{go to step 4.} \\ &> \epsilon_1, && \text{reject } \theta \text{ and go to step 1.} \end{aligned} \tag{1}$$

4. Perform an exhaustive search of all possible subtrees. For each subtree check that the root of the subtree occurs at least 37 Ma, and that both offspring of this root produce trees that survive to the present. If both conditions are met, count the number of fossils on the subtree,  $\mathcal{A}' = (A_1, \dots, A_{14})$ .
5. Determine which subtree has the smallest value of  $\rho(\mathcal{A}_{obs}, \mathcal{A}')$ , i.e., has fossil counts closest to the anthropoid fossil set. This is the

*optimal subtree.* If

$$\begin{aligned} \rho(\mathcal{A}_{obs}, \mathcal{A}') &\leq \epsilon_2, && \text{accept } \boldsymbol{\theta} \text{ and measure } \tau^*. \\ &> \epsilon_2, && \text{reject } \boldsymbol{\theta} \text{ and return to step 1.} \end{aligned} \tag{2}$$

In practice this algorithm is too inefficient to give sensible results in a reasonable time, as repeatedly drawing from the prior distribution means that a long time is spent simulating data with parameter values that lie in the tails of the posterior distribution. A more efficient algorithm is given in the appendix. Note that this algorithm requires the genealogy to be simulated, rather than just keeping track of  $Z(t)$  as is sufficient in a birth-death process.

The division of the data into two nested parts (primates and anthropoids) is not a necessary part of the analysis, but is done to maximise the information that can be extracted from the data. It is possible to consider just the primate fossil counts  $\mathcal{D}$  and estimate only the primate divergence time by stopping the algorithm after step 3. An alternative approach to estimating multiple divergence times not based on the OSS algorithm is given in Wilkinson and Tavaré (2009).

### *Data and Results*

The primate fossil data set is given in Table 1. It contains counts of the number of primate and anthropoid species discovered in each epoch during the Cenozoic. The anthropoids are a monophyletic subgroup of the primates containing the hominoids (apes and humans) and the New and

Old World monkeys. Since fossils cannot be precisely dated, we bin the data into geological epochs, and count the number of species discovered coming from each epoch. Note that so far no undoubted primate fossil older than 54.8 Myr has been discovered, and no crown-group anthropoid fossil older than 37 Myr. Also included in the table are the numbers of known extant species, taken from Groves (2005). Information on extant diversity is valuable as it gives information about the sampling rates that is otherwise difficult to estimate.

### TABLE 1 ABOUT HERE

Before giving the results of the analysis, we need to make various implementation assumptions. Firstly, the birth and death probabilities  $p_0(t)$  and  $p_2(t)$  need to be specified through time. This is done by fixing the expected growth to be logistic, so that

$$\mathbb{E}Z(t) = \frac{2}{\gamma + (1 - \gamma)e^{-\rho(t+54.8+\tau)}} \quad (3)$$

for unknown  $\gamma$  and  $\rho$ . We can use the result that

$$\mathbb{E}Z(t) = 2 \exp \left( \lambda \int_{-54.8-\tau}^t [2p_2(u) - 1] du \right) \quad (4)$$

(see Harris, 1963, for example) to equate the expected growth curve to the birth and death probabilities to solve for  $p_0(t)$  and  $p_2(t)$ . Other simple functional forms for the growth were tried (results not shown), but it is possible to show using Bayes factors (approximated by the acceptance

probability in the ABC algorithm) that logistic growth is best supported by the data (Wilkinson, 2007).

We give prior distributions to all unknown parameters except  $\tau^*$ , which is chosen by an optimality criterion during the simulation. The prior distributions used are

$$\tau \sim U[0, 100]$$

$$\rho \sim U[0, 0.5]$$

$$\gamma \sim U[0.005, 0.015]$$

$$1/\lambda \sim U[2, 3].$$

The prior on  $\tau$  is equivalent to assigning a uniform prior distribution on the interval [154.8, 54.8] Ma for the primate divergence time  $t_1$ , which represents our prior state of uncertainty about the primate divergence. The prior range for  $1/\lambda$  was set by consideration of the mean species survival time (Alroy, 1994), and the range for  $\rho$  and  $\lambda$  were fixed by considering the mean diversity implied by the logistic growth curve (Wilkinson, 2007). Prior distributions for  $\boldsymbol{\alpha}$  and  $\boldsymbol{\beta}$  are chosen for reasons of conjugacy. For the binomial model we let  $\alpha_i \sim U[0, 1]$  and assume that the  $\alpha_i$  are independent *a priori*. In the Poisson model we use gamma prior distributions, setting  $\beta_i \sim G(5, 50)$  for  $i = 1, \dots, 14$  with the  $\beta_i$  independent *a priori*, where  $G(a, b)$  denotes the gamma distribution with shape parameter  $a$  and rate parameter  $b$  (i.e., if  $X \sim G(a, b)$  the density of  $X$  is  $x^{a-1}b^a e^{-bx} / \Gamma(a)$ ). When we use the K-T crash model we give the unknown probability of extinction,  $p$ , a  $U[0, 0.5]$  distribution. The posteriors for  $\tau$  and  $\tau^*$  appear to

be robust to small changes in the prior specifications of all the parameters.

The ABC inference procedure requires a choice of metric  $\rho(\cdot, \cdot)$  and a tolerance  $\epsilon$ . After investigation into the choice of metric (see Wilkinson, 2007, for details), we found that the following metric captured the required details in the data:

$$\rho(\mathcal{D}_{obs}, \mathcal{D}') = \frac{1}{2} \left| \frac{D'_+}{D_+} - 1 \right| + \sum_{i=1}^{14} \left| \frac{D_i}{D_+} - \frac{D'_i}{D'_+} \right| + \frac{1}{2} \left| \frac{N'_0}{N_0} - 1 \right| \quad (5)$$

where  $N_0$  is the extant diversity,  $D_i$  the number of fossil species found in epoch  $i$ , and  $D_+ = \sum_{i=1}^{14} D_i$ . Primes are used to denote simulated values of observed quantities (e.g.,  $N'_0$  is the simulated extant diversity). The first term on the right measures the difference in the total number of fossils found in the simulated and real data sets, the second term measures the distance between the two vectors of proportions, and the third term measures the distance between the number of known extant species ( $N_0 = 376$ ) and the number predicted by the model. Using this metric and the ABC algorithm in the appendix, we can sample approximately from  $\pi(\boldsymbol{\theta} | \mathcal{D}_{obs}, N_0 = 376)$ . Notice that because  $\rho$  depends on  $\mathcal{D}_{obs}$  and  $N_0$  the results are conditioned on both the fossil data and the number of extant species  $N_0$ . Conditioning solely on  $\mathcal{D}_{obs}$  by removing the third term on the right in Equation (5) shows that the extant diversity is important for constraining the sampling rates.

The tolerances  $\epsilon_1$  and  $\epsilon_2$  used in Equations (1) and (2) are chosen pragmatically to be the smallest values that allow a sufficient number of accepted results in the time available for computation. In this case, we had

access to a 100-core cluster of processors and could choose low values of  $\epsilon_1 = 0.5$  and  $\epsilon_2 = 0.5$ . The effect of using ABC rather than an exact Monte Carlo technique can be shown to be equivalent to the addition of extra variability into the model. The addition of extra uncertainty representing model error is desirable in this case. Both the model and the data are uncertain, and in particular we would not wish to use model predictions without accounting for model discrepancy in some way. The approximation returned by the ABC algorithm will be overdispersed when compared to the true posterior, and so we are comforted by the knowledge that the estimates are conservative, rather than optimistic, in their specification of uncertainty.

We present the results from three different model scenarios. They are

1. binomial sampling model
2. Poisson sampling model
3. K-T crash with Poisson sampling.

For each we find the posterior distribution of  $t_1$  and  $t_2$ , the primate and anthropoid divergence times, respectively. Figure 1 shows the marginal posterior distributions  $\pi(t_1|\mathcal{D}_{obs}, \mathcal{A}_{obs}, N_0)$  and  $\pi(t_2|\mathcal{D}_{obs}, \mathcal{A}_{obs}, N_0)$  for each of the three model scenarios and Table 2 gives brief numerical details of each posterior.

FIGURE 1 ABOUT HERE

TABLE 2 ABOUT HERE

We now provide some comments on the results.

1. The primate fossil record is unable to constrain precisely the divergence time. For all the models we examined (we have reported three, but tried more), the posterior distribution of  $t_1$  has a tail that extends far into the Cretaceous. It seems unlikely that the fossil record could constrain the divergence time estimate to be within the Cenozoic without far stronger modelling or prior assumptions. Our model neglects many aspects, but is simple and contains relatively few parameters. More complex models are likely to have greater numbers of parameters and produce comparable or longer-tailed distributions when parametric uncertainty is taken into account.
2. These posteriors take into account the uncertainty induced by the unknown parameters. Fixing all parameters except  $\tau$  at estimates produces slightly more constrained posteriors, but at the cost of assuming perfect knowledge where none exists. Similarly, the ABC approximation has the effect of dispersing the posteriors slightly, but simulation studies where the tolerance  $\epsilon$  is decreased indicate that this is unlikely to reduce the uncertainty by much.
3. The binomial and Poisson sampling models produce similar posterior distributions. The K-T crash model reduces the expected posterior estimate of  $t_1$  and  $t_2$ , although considerable uncertainty remains. The discontinuity in the K-T posterior occurs at the Cretaceous-Tertiary boundary.
4. Posterior estimates of the probability of Cretaceous origins for the primates can be found for each model. We find values of 0.70, 0.73

and 0.30 in the binomial, Poisson and K-T crash models, respectively. Note that Cretaceous origins are less than half as likely in the K-T crash model.

5. The posterior distributions shown in Figure 1 are independent of any molecular data set. They could be used as prior distributions in subsequent molecular analyses of the primates or of their subclades, and are not specific to the analysis performed in the next section of this paper. Others wishing to use these fossil calibrations should use the parametric approximations given in Table 3 or contact R.W. for a Monte Carlo sample from these distributions if preferred.

### *Analytic Approximations for the Posterior*

Before combining these results with the sequence data, we describe parametric fits to the posteriors in Figure 1. The method of Yang and Rannala (2006) for dating nodes using sequence data allows the implementation of any arbitrary statistical distributions to represent the information in the fossil data as long as the probability density function can be calculated analytically. For the binomial and Poisson sampling scheme runs we fit independent skew- $t$  distributions to the marginals for  $t_1$  and  $t_2$ . The skew- $t$  distribution is specified by the location parameter  $\xi$ , scale parameter  $\omega$ , shape parameter  $\alpha$ , and the degrees of freedom  $\nu$  (see Equation (4) in Azzalini and Genton, 2007, for details). We add the additional requirement that  $t_1 > t_2$  (as the primates must have originated before the anthropoids), and this induces a dependency between  $t_1$  and  $t_2$ .

We estimate the parameter values shown in Table 3 and find that when the filtering ( $t_1 > t_2$ ) is applied, we achieve a good fit to the model posteriors.

### TABLE 3 ABOUT HERE

The skew- $t$  distribution with  $\alpha > 0$  is particularly interesting for representing fossil calibrations, as the distribution is concentrated around the location parameter, but has a long tail on the right, suitable for representing the case where one can be much more confident about the minimum age bound than about the maximum bound of a lineage divergence.

The K-T posterior is harder to fit because of the discontinuity at the K-T boundary. We use a mixture of skew normal distributions. The skew normal distribution is a special case of the skew- $t$  with  $\nu = \infty$ . When the shape parameter  $\alpha = 0$ , the skew-normal and skew- $t$  distributions become the normal and  $t$  distributions, respectively. We let

$$t_1 = \begin{cases} R_1 & \text{with probability } q \\ R_2 & \text{with probability } 1 - q \end{cases} \quad (6)$$

so that the density of  $t_1$  is  $qf_1(x) + (1 - q)f_2(x)$  where  $f_i$  is the density of  $R_i$ . We estimate  $q = 0.698$ , and find parameter estimates for the parameters of the distributions  $R_1$  and  $R_2$  as shown in Table 3. We fit a skew- $t$  distribution to the K-T posterior for  $t_2$  as above.

### *Analysing other fossil datasets*

The code for the computer program used to generate the posterior distributions shown in Figure 1 is available upon request from R.W. It provides a stand-alone analysis of the primate fossil record and could be modified to date divergence times of non-primate clades for which fossil data similar to those given in Table 1 are available. That is, the data must consist of counts of the number of generally recognized morphospecies known from the fossil record for a sequence of time intervals. The time at the beginning and end of each interval must be known, but the intervals need not necessarily be contiguous. Knowledge of the number of extant species is useful for estimating the sampling rates, but is not necessary and can be left out of the analysis by removing the term involving  $N_0$  from the metric in (5).

For our analysis, it proved useful to consider the primates as well as a nested subclade consisting of the anthropoids. If the OSS method were to be applied to non-primate datasets, then any other type of simple tree structure could be accommodated in the analysis by making suitable changes to the inference procedure (Wilkinson, 2007, contains examples of including other types of structure in the primate phylogeny). To date just the root (ignoring any subclades), the OSS algorithm can be stopped after step 3. Similarly, to date more than one subtree, we could add steps similar to steps 4 and 5 to pick out any required feature. However, computational considerations may make this method prohibitively expensive for dating many more than two divergence times.

User specified inputs for the model include prior distributions for all unknown parameters (or a fixed parameter estimate to be used in place of a prior distribution) and a tolerance  $\epsilon$  for the ABC algorithm. In practice, the tolerance needs to be chosen according to the computational resources available. Smaller values of  $\epsilon$  give a more accurate ABC approximation, however, they can require significant computation in order to generate a sufficient number of accepted parameter values in steps 3 and 5 of the OSS algorithm. The user must also specify birth and death probabilities  $p_0(t)$  and  $p_2(t)$ . In this paper, this was done by specifying the expected diversity curve  $\mathbb{E}Z(t)$  (Equation (3)) and solving for  $p_0(t)$  and  $p_2(t)$ . In general any parametric curve can be used as long as Equation (4) can be solved to find the birth and death probabilities.

The analytic approximations to the posterior distributions required for the molecular analysis that follows have not been automated as part of the main dating program. These were obtained using the R package `sn` (Azzalini, 2010). The mixture of skew- $t$  distributions used to approximate the K-T posterior was found by trial and error.

## MOLECULAR DATA

In the previous section, we derived the posterior distributions for the crown primate and anthropoid divergence dates using fossil data. We now use these posterior distributions as prior distributions on the age of  $t_1$  and  $t_2$  in an analysis of sequence data. This follows the Bayesian mantra that today's posterior is tomorrow's prior. The conditional independence structure of

the problem implies that given  $t_1$  and  $t_2$ , the fossil and sequence data are independent (they are of course *a priori* dependent when not conditioning on the divergence times). This follows because the version of the fossil data used (Table 1) contains only limited morphological information (the classification into anthropoid and non-anthropoid species), and, thus, is informative about  $t_1$  and  $t_2$  but not about other aspects of the phylogeny (apart from its size). This means that we can write

$\pi(\mathcal{S} \mid t_1, t_2, \mathcal{D}) = \pi(\mathcal{S} \mid t_1, t_2)$  where  $\mathcal{S}$  denotes the sequence data. Using Bayes theorem, we can then show that

$$\begin{aligned} \pi(t_1, t_2 \mid \mathcal{D}, \mathcal{S}) &\propto \pi(t_1, t_2 \mid \mathcal{D})\pi(\mathcal{S} \mid t_1, t_2, \mathcal{D}) \\ &= \pi(t_1, t_2 \mid \mathcal{D})\pi(\mathcal{S} \mid t_1, t_2) \end{aligned}$$

to justify using the posterior distribution  $\pi(t_1, t_2 \mid \mathcal{D})$  from the fossil analysis as a prior distribution in the sequence data analysis. To avoid ambiguity in what follows, we shall refer to the posteriors from the fossil analysis as the calibration distributions, and use the term posterior when referring to the inference from the molecular analysis. We present the analysis of molecular divergence dates using the calibration distributions from five different fossil calibration models. These models are the binomial, Poisson, and K-T models described above, as well as two simpler prior distributions. One of these priors is based on a gamma distribution and the second is based on ‘soft bounds.’

## *Sequence Data*

We use a DNA sequence dataset based on two genomic regions. The first region maps to the *CFTR* region of human chromosome 7 and is aligned for different mammals by Cooper et al. (2005). This 1.9 Mbp region was refined by Steiper and Young (2006) into a 59,764 bp alignment. For this study, only 13 primate sequences are used: human (*Homo sapiens*), common chimpanzee (*Pan troglodytes*), gorilla (*Gorilla gorilla*), orangutan (*Pongo pygmaeus*), rhesus macaque (*Macaca mulatta*), anubis baboon (*Papio anubis*), vervet (*Chlorocebus aethiops*), common marmoset (*Callithrix jacchus*), dusky titi monkey (*Callicebus moloch*), Bolivian squirrel monkey (*Saimiri boliviensis*), gray mouse lemur (*Microcebus murinus*), small-eared galago (*Otolemur garnettii*), and ringtailed lemur (*Lemur catta*).

The second locus is the *CYP7A1* region (22,906 bp), located on human chromosome 8, with nine primate species sequenced. Wang et al. (2007) examined eight genomic regions in a sample of diverse primate taxa, including *CYP7A1*. These loci were examined via the UCSC Genome Browser, and the *CYP7A1* region was chosen for analysis in this paper because it is less gene-rich than the other regions. Sequences for 7 species were obtained as described in Wang et al. (2007): human (*Homo sapiens*): hg18 chr8: 59525742–59605413; hamadryas baboon (*Papio hamadryas*): AC162431; eastern black-and-white colobus (*Colobus guereza*): AC148223; common marmoset (*Callithrix jacchus*): AC162435; owl monkey (*Aotus nancymae*): AC162781; Bolivian squirrel monkey (*Saimiri boliviensis*): AC147423; and ringtailed lemur (*Lemur catta*): AC151871.

The common chimpanzee and rhesus macaque sequences were obtained via the UCSC Genome Browser using a portion of the 5' and 3' ends of the human sequence as a query in BLAT (Kent, 2002), with the resulting coordinates panTro2 chr8: 56563907–56626694 for the common chimpanzee and rheMac2 chr8: 61089318–61164419 for the rhesus macaque. Repetitive DNA was removed using RepeatMasker (Smit et al., 1996-2004). The sequences were aligned with MLAGAN (Brudno et al., 2003). All positions with gaps were removed. There are 22,906 sites in the *CYP7A1* alignment. Between the two loci, there are 15 unique primate species, for which the generally accepted phylogeny (e.g., Goodman et al., 1998; Ray et al., 2005) is shown in Figure 2. This is the phylogeny used for the molecular dating analysis. Note that two species (*Colobus guereza* and *Aotus nancymaae*) are missing data for locus 1, while six species are missing data for locus 2 (*Gorilla gorilla*, *Pongo pygmaeus*, *Chlorocebus aethiops*, *Callicebus moloch*, *Microcebus murinus*, and *Otolemur garnettii*).

### *Estimation of Divergence Times*

The two loci are analyzed jointly using the Bayesian MCMC program *mcmctree* in PAML 4.2 (Yang, 2007). The HKY+ $\Gamma_5$  model (Hasegawa et al., 1985; Yang, 1994) was used, with different transition/transversion rate ratios ( $\kappa$ ), different base frequencies and different gamma shape parameter  $\alpha$  for the two loci. Gamma priors were assigned on parameters  $\kappa \sim G(6, 2)$ , with mean 3, and  $\alpha \sim G(1, 1)$ . The substitution rates are assumed to drift over time independently at the two loci. We use 100 Myr

as one time unit. The rate at the root is assigned the gamma prior  $\mu \sim G(0.2, 2)$ , with mean 0.1 (i.e.,  $10^{-9}$  substitutions per site per year). The simpler JC model (Jukes and Cantor, 1969) was used in some analyses and found to produce similar results to HKY+ $\Gamma_5$ ; those results are not reported below.

The geometric Brownian motion model was used to accommodate the drift of the substitution rate over time (across lineages) (Rannala and Yang, 2007). The rate-drift parameter is assigned the gamma prior  $\sigma^2 \sim G(1, 10)$ . A model of rate drift was used due to the well-established rate variation within primates (e.g., Steiper et al., 2004). This molecular rate variation was confirmed by strict clock analyses that resulted in date estimates inconsistent with the fossil record, e.g. at the human/chimpanzee node recovering estimates  $< 5$  Ma (results not shown). The prior for times is generated from the birth-death process with sampling, with parameters  $\lambda = \mu = 1$  and  $\rho = 0$ , so that the kernel is uniform (Yang and Rannala, 2006).

We estimated dates under five calibration models (Poisson, binomial, K-T, gamma, and bounds). The first three of these are based on the models described in the section on using the fossil record. For the gamma model we fit a gamma prior distribution to subjective date estimates. We assume that the crown primate node has a minimum 2.5% boundary at 56 Ma and an maximum 97.5% boundary at 85 Ma and assume the crown anthropoid node has minimum 2.5% boundary at 41 Ma and maximum 97.5% boundary at 65 Ma. We fit gamma distributions to these values and use a  $G(91.2, 130.4)$  prior for the primate node, and a  $G(75.3, 143.8)$  prior for the

anthropoid node. The bounds model assumes that the crown anthropoid node falls between 37 and 70 Ma with 2.5% chance each for the dates being older or younger and that the crown primate node falls between 55 and 90 Ma with 2.5% chance each for the dates being older or younger. Details of the implementation of these calibrations are given in Yang and Rannala (2006).

Step lengths of proposals were adjusted in pilot runs to achieve a near-optimal acceptance ratio of 1/3. The same analysis was conducted multiple times. Convergence and mixing of the chain were assessed by consistency across runs, by using trace plots, and calculating the effective sample sizes. Summaries of the posterior distribution such as the mean and 95% equal-tail credibility interval (CI) were generated by combining the samples taken over the runs.

### *Results of Molecular Dating Analysis*

#### FIGURE 2 ABOUT HERE

The posterior means and 95% equal-tail posterior credibility intervals (CIs) for the divergence times are listed in Table 4. Date estimates for some of the major primate clades are plotted in Figure 3. This figure presents the 95% posterior CIs from the integrated analysis, shown as black bars, with the posterior mean estimate given as a white hatch (models from top to bottom are Poisson, K-T, binomial, gamma, and bounds). Also shown are the 95% CIs of the fossil calibrations for the crown primate and crown anthropoid nodes found from the fossil analysis (gray bars). A few

observations can be made from this figure. Firstly, there is broad agreement among all of the point estimates and credibility intervals for all of the calibration models. The most pronounced difference is the size of the credibility intervals at the crown primate node. In this case the more exotic distribution models yield a larger and older credibility interval than the gamma and bounds models. These older dates are to be preferred as both the gamma and bounds calibration distributions have artificially light tails when compared with the model-based calibrations obtained in the first phase of the analysis using the fossil record. Secondly, note that the effect of the molecular analysis is to move the estimate of the age of the crown primate and crown anthropoid nodes further into the past. Most of the mass from the fossil calibration distributions for the primate node is between approximately 55 and 85 Ma, whereas the molecular posterior distributions are much older, placing most of the posterior mass in the Cretaceous ( $>65$  Ma). There is a strong signal in the molecular data that the primate and anthropoid node ages are older than the dates predicted by the fossil analysis alone.

Comparing the date estimates with those of two recent studies of primate molecular divergence dates (Fig. 3; grey arrowhead: Steiper and Young (2009), black arrowhead: Steiper and Young (2006)) shows that the present dates are generally somewhat older than those from those studies. However, the credibility intervals from our integrated analysis contain these other date estimates. The crown strepsirrhine node is somewhat younger, though this may be related to the relative lack of calibration information in this part of the tree.

The posterior means of node ages when using the prior distribution obtained from the Poisson sampling model are used to draw the tree of Figure 2.

FIGURE 3 ABOUT HERE

FIGURE 4 ABOUT HERE

The infinite-sites plot (Yang and Rannala, 2006, Fig. 8) is shown in Figure 4 for the Poisson sampling model. This plots the posterior 95% CI width against the posterior mean of the node ages. The high correlation coefficient ( $r^2 = 0.80$ ) means that the sequence data are very informative. The slope of 0.49 means that for every 1 Myr of divergence time 0.49 Myr is added to the CI width, indicating that the fossil calibrations are rather imprecise. The points fit the straight line rather well except for the four oldest nodes. Node ages  $t_1$  and  $t_2$  are more precise than average because these are the calibration nodes. Ages  $t_{13}$  and  $t_{14}$  for the two strepsirrhine nodes have large errors in the posterior, apparently because there is not a fossil calibration in that portion of the tree, and also one sequence is missing at one of the two loci in strepsirrhines. Both features make it difficult for the model to assess rate variation within the strepsirrhines to derive reliable date estimates. The plots for other fossil models (not shown) are very similar, with  $r^2$  values close to 0.8, and the slope close to 0.5.

Estimates of parameters in the molecular model were very similar among the fossil-calibration models. The posterior means and 95% CIs of  $\kappa$  are 4.4 (4.2, 4.6) and 4.7 (4.6, 4.8) for loci 1 and 2, respectively. The overall

rates were estimated to be 1.5 (1.0, 2.1) and 1.0 (0.7, 1.3)  $\times 10^{-9}$  substitutions per site per year at loci 1 and 2, respectively, while the rate drift parameters  $\sigma^2$  were estimated to be 0.39 (0.20, 0.68) and 0.30 (0.15, 0.53).

TABLE 4 ABOUT HERE

## DISCUSSION

We have introduced a probabilistic model that links primate divergence times to the observed chronological distribution of fossils and numbers of living primate species. The model used is relatively simple to code and understand, hopefully making our inference and assumptions transparent. Our focus was not on building a highly accurate model of evolution, accounting for migration, climatic variability, etc., but to capture the basic pattern of growth in order to understand what range of divergence times could feasibly lead to the observed fossil data. It is not clear whether a more sophisticated model would be possible to justify, and such a model is likely to introduce more uncertainty into the estimates of the divergence times, not less. Most of the uncertainty in our final estimates comes from the uncertainty in results for the fossil calibrations and any uncertainty introduced by examining the model discrepancy (not shown here). To substantially reduce the uncertainty in the fossil estimates it is likely that data from a different source, or with a more detailed structure, would be required. If the number of fossils of each species discovered was known,

then the model and ABC inference algorithm could be altered to incorporate these data, providing further valuable information about the sampling rate and helping us to constrain divergence time estimates. Unfortunately this information is not readily available, whereas the number of species recorded is collectable from the literature.

The primate molecular divergence dates estimated from linking these approaches reveal a number of important points. Most importantly, calibration distributions generated from complex models based on the empirical distribution of fossils and the numbers of living species can be used to generate useful molecular divergence estimates. This represents an advance over previous methods for two main reasons. First, this method overcomes some of the inherent difficulties in using fossils to diagnose the earliest members of lineages (Steiper and Young, 2008). Specifically, it is the earliest members of a lineage that are the most important for calibrating molecular clocks, but the earliest fossil representatives of a lineage will be the most problematic to diagnose phylogenetically. Given this paradox, alternative methods for molecular clock calibration are critical. Second, although previous methods have used a probabilistic approach to molecular clock calibration (e.g., Rannala and Yang, 2007; Barnett et al., 2005), the present methods use the empirical distribution of fossil and extant species to generate a distribution for use as a calibration. Given its incorporation of more empirical data from the living and fossil data, the present method potentially allows for a more accurate distribution for species divergence times. The *mcmctree* program is currently the only molecular dating program that implements the skew-t distributions generated in the analysis

of this paper, but we expect it to be straightforward to include such distributions in Bayesian dating programs such as BEAST (Drummond et al., 2006), which can accommodate arbitrary calibration distributions.

We have chosen here to model the two data sets (fossils and sequences) separately, using a two-step procedure to date divergence times. In the first step, the fossil record was analysed to produce a distribution for the primate and anthropoid divergence times, and in the second step, this distribution was used as a prior distribution in a molecular analysis. An advantage of this two-step procedure is that the posterior distributions shown in Figure 2 can be used as prior distributions in other molecular analyses without fear of double counting the molecular data, as they were obtained independently of the sequence data. An alternative to our two-step approach would be to use a combined model for both the sequence and fossil data. While an integrated approach may lead to better consistency between the two parts of the analysis, it is likely to be computationally expensive and may be dominated by the molecular data. Exploration of the advantages and disadvantages of the two approaches merits further research.

The different calibration distributions, including the gamma and the simple bounds, produced similar posterior date estimates in that the posterior means are similar and the posterior CIs overlap considerably. However, the Poisson, binomial and K-T calibrations produced wider CIs, with much older maximum CI limits for the crown primate node. We suggest that the molecular date estimates based on these models more accurately reflect the uncertainties in the fossil and molecular data and that the subjective calibrations based on the gamma and simple bounds may be

over-confident.

## TABLE 5 ABOUT HERE

The degree to which the age of the oldest known fossil representatives of a clade reflect our estimates of divergence dates is variable. Our estimates suggest that four nodes stand out as particularly badly represented by the fossil record (Table 5): the origin of crown group primates ( $t_1$ ), the origin of crown group catarrhines ( $t_3$ ), the origin of crown group great apes ( $t_4$ ) and the origin of crown group platyrrhines ( $t_{10}$ ). The difficulty of accurately identifying fossils as either early crown group members of a clade or stem lineage taxa may be partly responsible in several cases. For example, if the controversial Late Miocene (ca. 7-5 Ma) taxa *Sahelanthropus*, *Orrorin* and *Ardipithecus* are excluded from the human lineage (Harrison, 2010), the oldest fossil representative of that lineage becomes *Australopithecus anamensis* at 4.2 Ma (Leakey et al., 1998), and the relative discrepancy between our estimated mean divergence date based on the Poisson sampling model and the oldest known crown group fossil of the human-chimpanzee clade at node  $t_6$  increases from 7% to 79% (Table 5). Similarly, it has been suggested that the Early Miocene primates known from South America were stem rather than crown group platyrrhines (Kay et al., 2008). If, instead, those taxa were considered members of the crown group, the proportional discrepancy between our estimated mean divergence date and the oldest known crown group fossil at node  $t_{10}$  would be reduced from 57% to 26%. The strepsirrhine divergence ( $t_{13}$ ) may in fact be the least secure of these dates, as the fossil record for

lemurs (which constitute the majority of Strepsirrhini) is non-existent, while that for lorisiforms dates back only to the late Eocene.

In other cases, large discrepancies are more likely indicative of a real hiatus in the fossil record. For example, the middle Oligocene is notorious for its poor fossil record, particularly in Africa (Kappelman et al., 2003). As this coincides with the inferred time and place of initial evolution of the crown catarrhine clade ( $t_3$ ), it may explain the large discrepancy between our estimated mean divergence date and the age of the earliest fossil representative of crown group catarrhines (Table 5). Similarly, the sudden appearance of taxonomically diverse primates, as well as of other groups of modern mammals, in the fossil record of Asia, Western Europe and North America at the base of the Eocene, has been interpreted as suggestive of a more ancient origin of those groups in a poorly sampled, as yet unidentified region, in more southern latitudes (Krause and Maas, 1990; Martin, 1993; Soligo, 2007; Martin et al., 2007). This would help to explain the large gap between our mean estimate of the date of origin of crown group primates ( $t_1$ ) and their oldest known fossil representatives. The date of only 64 Ma for the divergence between Strepsirrhini and Haplorhini reported by Chatterjee et al. (2009) is distinctly younger than the distribution of inferred dates for that node shown in our Figure 3. This young age estimate may be due to Chatterjee et al.'s use of two exponential distributions to represent minimum bound calibrations in their BEAST analysis. These distributions represent rapid decay of the probability density function beyond the minimum bounds; i.e., they implicitly assume that the true age is close to the minima and unlikely to be much older than those minima.

This assumption, we feel, is unlikely to be warranted, as it does not take account of the sizable gaps that exist in the primate fossil record (Martin, 1993; Tavaré et al., 2002; Soligo et al., 2007). It should also be noted that differences in strategies used by Bayesian programs to incorporate minimum- and maximum-age bounds may be responsible for very large differences in posterior time estimates (Inoue et al., 2010). The strategies used in the BEAST analyses are not made explicit, but the use of a number of calibration points that are seemingly based on minimum bounds alone is of potential concern here. Further research in this area is clearly needed.

In addition, it should be noted that our estimates for the divergence of crown group strepsirrhines ( $t_{13}$ ) have very wide 95% credibility intervals (Fig. 3, Table 4). Thus, the relatively low (compared to other nodes) discrepancy between mean model estimate and fossil date for node  $t_{13}$  (34.6%; Table 5) may reflect the effect of the near-total absence of a crown strepsirrhine fossil record on both dates rather than relative congruence between the two.

Compared to two recent molecular studies of primate divergence dates (Steiper and Young, 2006, 2008), the majority of our estimates are somewhat older (Fig. 3). In most cases the increases suggested discrepancies between estimated divergence dates and the oldest known fossil representative of a clade. In the case of the divergence between the human and chimpanzee lineages ( $t_6$ ), however, our slightly older dates, when compared to recent molecular estimates, may align better with the fossil record, if any one of *Sahelanthropus*, *Orrorin* or *Ardipithecus* is accepted as an early representative of the human lineage (Senut et al.

(2001); Brunet et al. (2002); Haile-Selassie et al. (2004); but see Harrison (2010) for an alternative interpretation).

## Acknowledgements

The authors are grateful to the Editor, Associate Editor and the referees for their helpful comments. Z.Y. is supported by a Biotechnological and Biological Sciences Research Council Grant. The infrastructure of the Anthropological Genetics Lab of MES at Hunter College (MES) was supported by Grant Number RR03037 from the National Center for Research Resources (NCRR), a component of the National Institutes of Health (NIH). The contents of this publication are solely the responsibility of the authors and do not necessarily represent the official views of NCRR or NIH.

## References

- Alroy, J. 1994. Quantitative mammalian biochronology and biogeography of North America. Ph.D. thesis University of Chicago.
- Andrews, P., T. Harrison, E. Delson, R. L. Bernor, and L. Martin. 1996. Distribution and Biochronology of European and Southwest Asian Miocene Catarrhines. Pages 168–207 in The Evolution of Western Eurasian Neogene Mammal Faunas (R. L. Bernor, V. Fahlbusch, and H.-W. Mittmann, eds.) Columbia University Press, New York.
- Andrews, P. and J. Kelley. 2007. Middle Miocene dispersals of apes. *Folia Primatol.* 78:328 – 343.
- Azzalini, A. 2010. R package `sn`: The skew-normal and skew- $t$  distributions (version 0.4-15). Università di Padova, Italia.
- Azzalini, A. and M. Genton. 2007. Robust likelihood methods based on the skew- $t$  and related distributions. *Int. Stat. Rev.* 76:106–129.
- Barnett, R., I. Barnes, M. J. Phillips, L. D. Martin, C. R. Harington, J. A. Leonard, and A. Cooper. 2005. Evolution of the extinct Sabretooths and the American cheetah-like cat. *Curr. Biol.* 15:R589 – R590.
- Beaumont, M. A., W. Zhang, and D. J. Balding. 2002. Approximate Bayesian computation in population genetics. *Genetics* 162:2025–2035.
- Benton, M. J. and P. C. J. Donoghue. 2007. Paleontological evidence to date the tree of life. *Mol. Biol. Evol.* 24:26–53.

- Brooks, S. P. 1998. Markov chain Monte Carlo method and its applications. *The Statistician* 47:69–100.
- Brudno, M., M. Chapman, B. Göttgens, S. Batzoglou, and B. Morgenstern. 2003. Fast and sensitive multiple alignment of large genomic sequences. *BMC Bioinformatics* 4:66.
- Brunet, M., F. Guy, D. Pilbeam, H. T. Mackaye, A. Likius, D. Ahounta, A. Beauvilain, C. Blondel, H. Bocherens, J.-R. Boisserie, L. De Bonis, Y. Coppens, J. Dejax, C. Denys, P. Douring, V. Eisenmann, G. Fanone, P. Fronty, D. Geraads, T. Lehmann, F. Lihoreau, A. Louchart, A. Mahamat, G. Merceron, G. Mouchelin, O. Otero, P. P. Campomanes, M. P. de León, J.-C. Rage, M. Sapanet, M. Schuster, J. Sudre, P. Tassy, X. Valentin, P. Vignaud, L. Viriot, A. Zazzo, and C. Zollikofer. 2002. A new hominid from the Upper Miocene of Chad, Central Africa. *Nature* 418:145–151.
- Chaimanee, Y., D. Jolly, M. Benammi, P. Tafforeau, D. Duzer, I. Moussa, and J.-J. Jaeger. 2003. A Middle Miocene hominoid from Thailand and orangutan origins. *Nature* 422:61–65.
- Chatterjee, H., S. Ho, I. Barnes, and C. Groves. 2009. Estimating the phylogeny and divergence times of primates using a supermatrix approach. *BMC Evol. Biol.* 9:259.
- Cooper, G. M., E. A. Stone, G. Asimenos, E. Green, S. Batzoglou, and A. Sidow. 2005. Distribution and intensity of constraint in mammalian genomic sequence. *Genome Res.* 15:901–913.

- Drummond, A. J., S. Y. W. Ho, M. J. Phillips, and A. Rambaut. 2006. Relaxed phylogenetics and dating with confidence. *PLoS Biol* 4:e88.
- Foote, M., J. P. Hunter, C. M. Janis, and J. J. Sepkoski, Jr. 1999. Evolutionary and preservational constraints on origins of biological groups: Divergence times of eutherian mammals. *Science* 283:1310–1314.
- Goodman, M., C. A. Porter, J. Czelusniak, S. L. Page, H. Schneider, J. Shoshani, G. Gunnell, and C. P. Groves. 1998. Toward a phylogenetic classification of Primates based on DNA evidence complemented by fossil evidence. *Mol. Phylogenet. Evol.* 9:585–598.
- Graur, D. and W. Martin. 2004. Reading the entrails of chickens: molecular timescales of evolution and the illusion of precision. *Trends Genet.* 20:80–86.
- Groves, C. P. 2005. Order primates. Pages 111–184 in *Mammal Species of the World: A Taxonomic and Geographic Reference* (D. E. Wilson and D. M. Reeder, eds.) vol. 1 3rd ed. John Hopkins University Press, Baltimore.
- Haile-Selassie, Y., G. Suwa, and T. White. 2004. Late Miocene teeth from the Middle Awash, Ethiopia, and early hominid dental evolution. *Nature* 303:1503–1505.
- Harris, T. E. 1963. *The Theory of Branching Processes*. Springer-Verlag, Berlin.

- Harrison, T. 2010. Apes among the tangled branches of human origins. *Science* 327:532–534.
- Hasegawa, M., H. Kishino, and T. Yano. 1985. Dating the human-ape splitting by a molecular clock of mitochondrial DNA. *J. Mol. Evol.* 22:160–174.
- Hedges, S. B. and S. Kumar. 2004. Precision of molecular time estimates. *Trends Genet.* 20:242–247.
- Inoue, J., P. C. J. Donoghue, and Z. Yang. 2010. The impact of the representation of fossil calibrations on Bayesian estimation of species divergence times. *Syst. Biol.* 59:74–89.
- International Commission on Stratigraphy. 2009. IUGS ratified ICS recommendation on redefinition of Pleistocene and formal definition of base of Quaternary; 23-07-2009. Tech. rep.
- Jukes, T. and C. Cantor. 1969. Evolution of protein molecules. Pages 21–123 in *Mammalian Protein Metabolism* (H. Munro, ed.). Academic Press, New York.
- Kappelman, J., D. T. Rasmussen, W. J. Sanders, M. Feseha, T. Bown, P. Copeland, J. Crabaugh, J. Fleagle, M. Glantz, A. Gordon, B. Jacobs, M. Maga, K. Muldoon, A. Pan, L. Pyne, B. Richmond, T. Ryan, E. R. Seiffert, S. Sen, L. Todd, M. C. Wiemann, and A. Winkler. 2003. Oligocene mammals from Ethiopia and faunal exchange between Afro-Arabia and Eurasia. *Nature* 426:549–52.

- Kay, R. F., J. G. Fleagle, T. R. T. Mitchell, M. Colbert, T. Bown, and D. W. Powers. 2008. The anatomy of *Dolichocebus gaimanensis*, a stem platyrrhine monkey from Argentina. *J. Hum. Evol.* 54:323–382.
- Kendall, D. G. 1948. On the generalized birth-and-death process. *Ann. Math. Stat.* 19:1–15.
- Kent, W. J. 2002. BLAT – the BLAST-like alignment tool. *Genome Res.* 12:656–664.
- Kontoyiannis, I., P. Harremoës, and O. Johnson. 2005. Entropy and the law of small numbers. *IEEE T. Inform. Theory* 51:466–472.
- Krause, D. W. and M. C. Maas. 1990. The biogeographic origins of late Paleocene-early Eocene mammalian immigrants to the western interior of North America. *Geol. Soc. Am. Special Papers* 243:71–105.
- Leakey, M. G., C. S. Feibel, I. McDougall, C. Ward, and A. C. Walker. 1998. New specimens and confirmation of an early age for *Australopithecus anamensis*. *Nature* 393:62–66.
- Marjoram, P., J. Molitor, V. Plagnol, and S. Tavaré. 2003. Markov chain Monte Carlo without likelihoods. *Proc. Natl. Acad. Sci. USA* 100:15324–15328.
- Martin, R. D. 1993. Primate origins: plugging the gaps. *Nature* 363:233–234.
- Martin, R. D., C. Soligo, and S. Tavaré. 2007. Primate origins: Implications of a Cretaceous ancestry. *Folia Primatol.* 78:277–296.

- McGowan, A. J. and A. B. Smith. 2008. Are global Phanerozoic diversity curves truly global? A study of the relationship between regional rock records and global Phanerozoic marine diversity. *Paleobiology* 34:80–103.
- Miller, E. R., B. R. Benefit, M. L. McCrossin, J. M. Plavcan, M. G. Leakey, A. N. El-Barkooky, M. A. Hamdan, M. K. Abdel Gawad, S. M. Hassan, and E. L. Simons. 2009. Systematics of early and middle Miocene Old World monkeys. *J. Hum. Evol.* 57:195–211.
- Ni, X., Y. Wang, Y. Hu, and C. Li. 2004. A euprimate skull from the early Eocene of China. *Nature* 427:65–68.
- Paul, C. R. C. 2009. The fidelity of the fossil record: The improbability of preservation. *Palaeontology* 52:485–489.
- Peters, S. E. and M. Foote. 2001. Biodiversity in the Phanerozoic: a reinterpretation. *Paleobiology* 27:583–601.
- Rannala, B. and Z. Yang. 2007. Inferring speciation times under an episodic molecular clock. *Syst. Biol.* 56:453–466.
- Raup, D. M. 1976. Species diversity in the Phanerozoic: an interpretation. *Paleobiology* 2:289–297.
- Ray, D. A., J. Xing, D. J. Hedges, M. A. Hall, M. E. Laborde, B. A. Anders, B. R. White, N. Stoilova, J. D. Fowlkes, K. E. Landry, L. G. Chemnick, O. A. Ryder, and M. A. Batzer. 2005. Alu insertion loci and platyrrhine primate phylogeny. *Mol. Phylogenet. Evol.* 35:117–126.
- Ripley, B. D. 1987. *Stochastic Simulation*. Wiley, New York.

- Seiffert, E. 2007. Evolution and extinction of Afro-Arabian primates near the Eocene-Oligocene boundary. *Folia Primatol.* 78:314–327.
- Senut, B., M. Pickford, D. Gommery, P. Mein, K. Cheboi, and Y. Coppens. 2001. First hominid from the Miocene (Lukeino Formation, Kenya). *Comptes Rendus de l'Academie des Sciences Series IIA Earth and Planetary Science* 332:137–144.
- Sisson, S. A., Y. Fan, and M. M. Tanaka. 2007. Sequential Monte Carlo without likelihoods. *Proc. Natl. Acad. Sci. USA* 104:1760–1765.
- Smit, A. F. A., R. Hubley, and P. Green. 1996-2004. RepeatMasker Open-3.0. URL <http://www.repeatmasker.org>.
- Smith, A. B. and K. J. Peterson. 2002. Molecular clocks and the fossil record. *Annu. Rev. Earth Pl. Sc.* 30:65–88.
- Smith, T., K. D. Rose, and P. D. Gingerich. 2006. Rapid Asia-Europe-North America geographic dispersal of earliest Eocene primate *Teilhardina* during the Paleocene-Eocene Thermal Maximum. *Proc. Nat. Acad. Sci. USA* 103:11223–11227.
- Soligo, C. 2007. Invading Europe: did climate or geography trigger early Eocene primate dispersals? *Folia Primatol.* 78:297–313.
- Soligo, C. and R. D. Martin. 2006. Adaptive origins of primates revisited. *J. Hum. Evol.* 50:414–430.
- Soligo, C., O. Will, S. Tavaré, C. R. Marshall, and R. D. Martin. 2007. New light on the dates of primate origins and divergence. Pages 29–49 in

- Primate Origins: Adaptations and Evolution (M. J. Ravosa and M. Dagosto, eds.) Springer: New York.
- Steiper, M. E. and N. M. Young. 2006. Primate molecular divergence dates. *Mol. Phylogenet. Evol.* 41:384–394.
- Steiper, M. E. and N. M. Young. 2008. Timing primate evolution: lessons from the discordance between molecular and paleontological estimates. *Evol. Anthropol.* 17:179–188.
- Steiper, M. E. and N. M. Young. 2009. Primates. Pages 482–486 in *Timetree of Life* (S. B. Hedges and S. Kumar, eds.). Oxford University Press.
- Steiper, M. E., N. M. Young, and T. Y. Sukarna. 2004. Genomic data support the hominoid slowdown and an early Oligocene estimate for the hominoid-cercopithecoid divergence. *Proc. Natl. Acad. Sci. USA* 101:17021–17026.
- Tavaré, S., C. R. Marshall, O. Will, C. Soligo, and R. D. Martin. 2002. Using the fossil record to estimate the age of the last common ancestor of extant primates. *Nature* 416:726–729.
- Thorne, J., H. Kishino, and I. Painter. 1998. Estimating the rate of evolution of the rate of molecular evolution. *Mol. Biol. Evol.* 15:1647–1357.
- Tierney, L. 1994. Markov chains for exploring posterior distributions. *Ann. Stat.* 22:1701–1762.

- Wang, Q. F., S. Prabhakar, S. Chanan, J. F. Cheng, E. M. Rubin, and D. Boffelli. 2007. Detection of weakly conserved ancestral mammalian regulatory sequences by primate comparisons. *Genome Biol.* 8:R1.
- Wang, S. C. and P. Dobson. 2006. Estimating the diversity of dinosaurs. *Proc. Natl. Acad. Sci. USA* 103:13601–13605.
- Wilkinson, R. D. 2007. Bayesian inference of primate divergence times. Ph.D. thesis University of Cambridge.
- Wilkinson, R. D. and S. Tavaré. 2009. Estimating primate divergence times by using conditioned birth-and-death processes. *Theor. Popul. Biol.* 75:278–285.
- Yang, Z. 1994. Maximum likelihood phylogenetic estimation from DNA sequences with variable rates over sites: approximate methods. *J. Mol. Evol.* 39:306–314.
- Yang, Z. 2007. PAML 4: Phylogenetic analysis by maximum likelihood. *Mol. Bio. Evol.* 24:1586–1591.
- Yang, Z. and B. Rannala. 2006. Bayesian estimation of species divergence times under a molecular clock using multiple fossil calibrations with soft bounds. *Mol. Biol. Evol.* 23:212–226.

# APPENDIX

## *ABC-within-Gibbs*

Rejection-based ABC cannot handle large numbers of parameters, because repeatedly sampling from the prior distribution becomes too inefficient in high dimensions. Markov chain Monte Carlo (MCMC) methods work by correlating observations, so that more time is spent in regions of high likelihood. The tails of the distribution are still visited, but less time is spent there. This motivated Marjoram et al. (2003) to introduce the approximate MCMC algorithm.

MCMC methods build a Markov chain on the parameter space, with dynamics controlled by an update kernel. An MCMC algorithm does not have to use the same update strategy each time, and in practice it is often convenient to combine a number of different update kernels (Tierney, 1994). A common hybrid algorithm is the Metropolis-within-Gibbs sampler (Brooks, 1998), in which Gibbs update kernels are used whenever the full posterior conditionals are known, and Metropolis-Hastings kernels when not. We use a similar idea, and combine Gibbs kernels with ABC-rejection steps, allowing us to exploit model structure where it is known. Before explaining how this works for our model, consider the structure where the parameter is split into just two components,  $\boldsymbol{\theta} = (\boldsymbol{\theta}_1, \boldsymbol{\theta}_2)$ , and where the Gibbs conditional proposal density  $\pi(\boldsymbol{\theta}_1|\mathcal{D}, \boldsymbol{\theta}_2)$  is known but where  $\pi(\boldsymbol{\theta}_2|\mathcal{D}, \boldsymbol{\theta}_1)$  is unknown. Then the following algorithm generates samples that are from an approximation to the posterior distribution  $\pi(\boldsymbol{\theta}|\mathcal{D})$ :

### *Approximate-Gibbs Sampler*

1. If currently at  $\boldsymbol{\theta} = (\boldsymbol{\theta}_1, \boldsymbol{\theta}_2)$ , draw  $\boldsymbol{\theta}'_1$  from  $\pi(\boldsymbol{\theta}_1|\mathcal{D}, \boldsymbol{\theta}_2)$  and set  $\boldsymbol{\theta} = (\boldsymbol{\theta}'_1, \boldsymbol{\theta}_2)$ .
2. Draw  $\boldsymbol{\theta}'_2$  from its prior  $\pi(\boldsymbol{\theta}_2)$  and simulate data  $\mathcal{D}'$  using parameter  $\boldsymbol{\theta} = (\boldsymbol{\theta}'_1, \boldsymbol{\theta}'_2)$ .
3. If  $\rho(\mathcal{D}, \mathcal{D}') \leq \epsilon$ , set  $\boldsymbol{\theta} = (\boldsymbol{\theta}'_1, \boldsymbol{\theta}'_2)$  and return to step 1. Otherwise stay at  $\boldsymbol{\theta} = (\boldsymbol{\theta}'_1, \boldsymbol{\theta}_2)$  and return to step 2.

Note that step 1 is the standard Gibbs update, and steps 2 and 3 are the ABC steps to draw approximately from  $\pi(\boldsymbol{\theta}_2|\mathcal{D}, \boldsymbol{\theta}_1)$ . How this algorithm is applied to our model depends on whether we use a binomial or a Poisson sampling scheme.

*Binomial sampling model.* — We introduce auxiliary information about the tree structure and enlarge the parameter space, and then simulate from the posterior distribution

$$\pi(\boldsymbol{\psi}, \lambda, \tau, \mathcal{N}, \boldsymbol{\alpha}|\mathcal{D}) \propto \mathbb{P}(\mathcal{D}|\boldsymbol{\alpha}, \boldsymbol{\psi}, \lambda, \tau, \mathcal{N})\mathbb{P}(\mathcal{N}|\tau, \boldsymbol{\psi}, \lambda)\pi(\tau)\pi(\boldsymbol{\psi}, \lambda)\pi(\boldsymbol{\alpha})$$

where  $\mathcal{N} = (N_1, \dots, N_{14})$ , with  $N_i$  denoting the number of species that lived at any point during the  $i^{\text{th}}$  epoch. An advantage of including the tree structure,  $\mathcal{N}$ , in the equation above is that parts of the likelihood equation become computable when we split the parameter  $\boldsymbol{\theta} = (\tau, \boldsymbol{\psi}, \lambda, \boldsymbol{\alpha}, \mathcal{N})$  into two parts,  $\boldsymbol{\alpha}$  and  $(\tau, \boldsymbol{\psi}, \lambda, \mathcal{N})$ . The conditional distributions required for

the Gibbs sampler for  $\boldsymbol{\alpha}$  are tractable:

$$\begin{aligned}
\pi(\boldsymbol{\alpha}|\mathcal{D}, \boldsymbol{\psi}, \lambda, \tau, \mathcal{N}) &\propto \pi(\boldsymbol{\alpha}, \boldsymbol{\psi}, \lambda, \tau, \mathcal{N}|\mathcal{D}) \\
&\propto \mathbb{P}(\mathcal{D}|\tau, \boldsymbol{\psi}, \lambda, \mathcal{N}, \boldsymbol{\alpha})\mathbb{P}(\mathcal{N}|\tau, \boldsymbol{\psi}, \lambda)\pi(\tau)\pi(\boldsymbol{\psi}, \lambda)\pi(\boldsymbol{\alpha}) \\
&\propto \pi(\boldsymbol{\alpha})\mathbb{P}(\mathcal{D}|\mathcal{N}, \boldsymbol{\alpha}) \\
&\propto \pi(\boldsymbol{\alpha}) \prod_{i=1}^{14} \alpha_i^{D_i} (1 - \alpha_i)^{N_i - D_i}.
\end{aligned}$$

Note that beta prior distributions for the  $\alpha_i$  are conjugate, so that the posterior distributions also have beta distributions ( $X \sim \text{Beta}(a, b)$  if  $X$  has density proportional to  $x^{a-1}(1-x)^{b-1}$  for  $0 \leq x \leq 1$  and is zero elsewhere). If the prior for each  $\alpha_i$  is a  $\text{Beta}(a, b)$  distribution, then

$$\pi(\boldsymbol{\alpha}|\mathcal{D}, \boldsymbol{\psi}, \lambda, \tau, \mathcal{N}) \propto \prod_{i=1}^{14} \alpha_i^{D_i+a-1} (1 - \alpha_i)^{N_i - D_i + b - 1}$$

so that the posterior distribution of  $\alpha_i$  is  $\text{Beta}(a + D_i, b + N_i - D_i)$ . The posterior mean of  $\alpha_i$  is then

$$\mathbb{E}(\alpha_i|\mathcal{D}, \mathcal{N}) = \frac{D_i + a}{N_i + a + b}. \tag{7}$$

If  $a$  and  $b$  are small compared with  $N_i$  and  $D_i$ , then Equation (7) is approximately equal to the ratio of the number of fossils to the number of species, which is the intuitive value for the sampling fractions:

$$\mathbb{E}(\alpha_i|\mathcal{D}, \mathcal{N}) \approx \frac{D_i}{N_i}.$$

The other conditional  $\pi(\tau, \boldsymbol{\psi}, \lambda, \mathcal{N} | \mathcal{D}, \boldsymbol{\alpha})$  is intractable, but can be sampled from using an ABC algorithm:

*ABC-within-Gibbs: Binomial sampling model*

1. Suppose we are at  $\boldsymbol{\theta}^{(t)} = (\boldsymbol{\psi}, \lambda^{(t)}, \boldsymbol{\alpha}^{(t)}, \tau^{(t)}, \tau^{*(t)}, \mathcal{N}^{(t)})$  after  $t$  iterations.
2. Propose  $\boldsymbol{\alpha}'$  from

$$\pi(\boldsymbol{\alpha} | \mathcal{D}, \boldsymbol{\psi}, \lambda^{(t)}, \tau^{(t)}, \mathcal{N}^{(t)}) = \prod \text{Beta}(a + D_i, N_i^{(t)} - D_i + b) \quad (8)$$

3. Propose  $(\boldsymbol{\psi}, \lambda', \tau')$  from prior  $\pi(\tau)\pi(\boldsymbol{\psi}, \lambda)$  and simulate tree  $\mathcal{N}'$  from  $\mathbb{P}(\mathcal{N}' | \tau', \boldsymbol{\psi}, \lambda')$ .
4. Simulate fossil counts  $\mathcal{D}'$ . If  $\rho(\mathcal{D}, \mathcal{D}') \leq \epsilon_1$  go to step 5. Otherwise return to step 3.
5. Use the optimal subtree selection algorithm to find the best subtree fossil counts  $\mathcal{A}'$ . If  $\rho(\mathcal{A}', \mathcal{A}) \leq \epsilon_2$  accept  $(\boldsymbol{\psi}, \lambda', \tau', \tau^*, \mathcal{N}')$  and set  $\boldsymbol{\theta}^{(t+1)} = (\boldsymbol{\psi}, \lambda', \boldsymbol{\alpha}', \tau', \tau^{*'}, \mathcal{N}')$ . If  $\rho(\mathcal{A}, \mathcal{A}') > \epsilon_2$  stay at  $(\boldsymbol{\psi}, \lambda^{(t)}, \boldsymbol{\alpha}^{(t)}, \tau^{(t)}, \tau^*, \mathcal{N}^{(t)})$  and return to step 3.

The hyperparameters  $a$  and  $b$  used in the beta prior distributions should not matter greatly as long as both are small, as they will be dominated by the data, as shown by Equation (7). We use  $a = b = 1$  in this analysis, as this makes the priors for each  $\alpha_i$  uniform on  $[0, 1]$ .

*Poisson sampling model.* — Recall that under the Poisson sampling model, fossil finds occur as the events of a Poisson point process on the branches of the tree. Label from 1 to  $N_k$ , each of the  $N_k$  species in interval  $k$ , and let

$$I_j^{(k)} = \begin{cases} 1 & \text{if we find a fossil of species } j \text{ in interval } k, \\ 0 & \text{otherwise.} \end{cases}$$

Then, if species  $j$  lives for time  $l_j^{(k)}$  in interval  $k$ , let  $\mathbb{P}(I_j^{(k)} = 1) = 1 - e^{-\beta_k l_j^{(k)}}$  where  $\{\beta_k\}_{k=1,\dots,14}$  are the sampling rates for each interval. The  $\{I_j^{(k)}\}_{j=1,\dots,N_k}$  are independent Bernoulli random variables with parameters  $1 - e^{-\beta_k l_j^{(k)}}$ , where  $l_j^{(k)}$  is a random parameter. The number of fossil species found is

$$D_k = \sum_{j=1}^{N_k} I_j,$$

i.e., the sum of  $N_k$  independent Bernoulli random variables. It is possible to approximate  $\mathcal{D}'$  by a Poisson distribution

$$D'_k = \sum_{j=1}^{N_k} I_j^{(k)} \approx \mathcal{P}o \left( \sum_{j=1}^{N_k} (1 - e^{-\beta_k l_j^{(k)}}) \right)$$

so that

$$\pi(\beta_k | \mathcal{D}, \boldsymbol{\psi}, \lambda, \tau, \mathcal{N}) \propto \pi(\beta_k) \left( \sum_{j=1}^{N_k} (1 - e^{-\beta_k l_j^{(k)}}) \right)^{D_i} \exp \left( - \sum_{j=1}^{N_k} (1 - e^{-\beta_k l_j^{(k)}}) \right).$$

The Kullback-Leibler divergence between the distribution of the sum of Bernoulli variables and the Poisson approximation can be bounded above

(Kontoyiannis et al., 2005), so that

$$D_{KL}(\pi_{S_n} || Po(\lambda)) \leq \frac{1}{\lambda} \sum_{i=1}^n \frac{p_i^3}{1-p_i},$$

where  $S_n$  is the sum of  $n$  independent Bernoulli( $p_i$ ) random variables and  $\lambda = \sum p_i$ . By approximating the sum of parameters in the Poisson distribution to first order, we find

$$\sum_{j=1}^{N_k} (1 - e^{-\beta_k l_j^{(k)}}) \approx \beta_k \sum_{j=1}^{N_k} l_j^{(k)} = \beta_k L_k$$

where  $L_k$  is the total length of all the lineages in interval  $k$ .

The posterior distribution of  $\beta_k$  can now be written as

$$\begin{aligned} \pi(\beta_k | \mathcal{D}, \boldsymbol{\psi}, \lambda, \tau, \mathcal{N}) &\propto \pi(\beta_k) \mathbb{P}(\mathcal{D} | \mathcal{N}, \beta_k) \\ &\propto \pi(\beta_k) \prod_{j=1}^{N_k} (1 - e^{-\beta_k l_j^{(k)}})^{I_j} (e^{-\beta_k l_j^{(k)}})^{1-I_j} \\ &\approx \propto \pi(\beta_k) e^{-\beta_k L_k} (\beta_k L_k)^{D_k} \end{aligned}$$

and so we can use conjugate gamma prior distributions,  $\beta_k \sim G(a, b)$ . The posterior distributions are then also gamma distributions

$$\beta_k | \mathcal{D}, \mathcal{N} \sim G(D_k + a, L_k + b).$$

When  $a$  and  $b$  are small the posterior means of the sampling rates are again

close to their intuitive value:

$$\mathbb{E}(\beta_k | \mathcal{D}, \mathcal{N}) = \frac{D_k + a}{L_k + b} \approx \frac{D_k}{L_k}. \quad (9)$$

## TABLES AND FIGURES

Epoch	$k$	Time at base of interval $k$ (Ma)	Primate fossil counts, $\mathcal{D}$	Anthropoid fossil counts, $\mathcal{A}$
Extant	0		376	281
Late-Pleistocene	1	0.15	22	22
Middle-Pleistocene	2	0.9	28	28
Early-Pleistocene	3	1.8	30	30
Late-Pliocene	4	3.6	43	40
Early-Pliocene	5	5.3	12	11
Late-Miocene	6	11.2	38	34
Middle-Miocene	7	16.4	46	43
Early-Miocene	8	23.8	34	28
Late-Oligocene	9	28.5	3	2
Early-Oligocene	10	33.7	22	6
Late-Eocene	11	37.0	30	2
Middle-Eocene	12	49.0	119	0
Early-Eocene	13	54.8	65	0
Pre-Eocene	14		0	0

Table 1: A summary of the number of crown group primate and crown group anthropoid species known from the fossil record (Tavaré et al., 2002; Soligo et al., 2007). Time during the Cenozoic is divided into 14 geologic epochs, with the dates for each epoch given in the table as millions of years ago (Ma). Also given is the extant diversity (Groves, 2005). Note that the geological scale used here does not take account of the latest adjustments made to the age of the Pliocene-Pleistocene transition (International Commission on Stratigraphy, 2009).

Model scenario	Node	2.5 <sup>th</sup> %	Median	97.5 <sup>th</sup> %
Binomial	$t_1$	59.0	68.3	88.9
	$t_2$	43.8	54.0	68.3
Poisson	$t_1$	59.0	68.7	88.2
	$t_2$	41.5	52.0	64.9
K-T	$t_1$	57.6	63.6	88.6
	$t_2$	41.0	51.1	62.1

Table 2: Summary of the marginal posterior distributions for the primate divergence time,  $t_1$ , and the anthropoid divergence time,  $t_2$ . The median and the 2.5<sup>th</sup> and 97.5<sup>th</sup> percentiles are reported. All values are in units of millions of years. The results from three different experiments are shown, corresponding to the cases described in the text.

Model	$t_1$				$t_2$			
	$\xi$	$\omega$	$\alpha$	$\nu$	$\xi$	$\omega$	$\alpha$	$\nu$
Binomial	60.71	10.94	4.42	16.01	49.73	6.82	1.41	9.08
Poisson	61.35	10.58	3.69	18.42	46.74	8.00	1.70	34.17
K-T - $R_1$	65.00	3.65	-3400	$\infty$	47.54	6.32	0.98	22.85
- $R_2$	65.02	13.75	11409	$\infty$				

Table 3: Parameter estimates for the parametric fit of skew- $t$  distributions to the binomial and Poisson sampling models, and for  $t_2$  in the K-T model. The skew- $t$  distribution is specified by the location parameter  $\xi$ , scale parameter  $\omega$ , shape parameter  $\alpha$ , and the degrees of freedom  $\nu$ . For the posterior of  $t_1$  in the K-T model we fit a mixture distribution  $0.698R_1 + 0.302R_2$ , where  $R_1$  and  $R_2$  are skew-normal distributions, with parameter estimates shown in the table. Note that setting  $\nu = \infty$  in the skew- $t$  distribution gives the skew-normal.

Node	Age	Poisson	K-T crash	Binomial	Gamma	Bounds
Crown Primates	$t_1$	84.5 (69.2, 103.5)	88.2 (71.5, 106.4)	87.5 (70.9, 107.4)	81.3 (69.0, 94.9)	83.1 (68.5, 91.2)
Crown Anthropoidea	$t_2$	47.2 (38.9, 56.5)	48.0 (39.2, 57.0)	49.6 (40.4, 58.8)	45.5 (37.6, 54.2)	44.1 (36.7, 54.4)
Crown Catarrhini	$t_3$	31.0 (25.1, 37.7)	31.5 (25.3, 38.1)	32.5 (26.1, 39.3)	29.8 (24.2, 36.2)	28.9 (23.5, 36.2)
Crown great apes	$t_4$	19.2 (15.1, 24.1)	19.5 (15.3, 24.3)	20.2 (15.8, 25.2)	18.5 (14.5, 23.2)	17.9 (14.1, 23.1)
<i>Gorilla/Homo+Pan</i>	$t_5$	9.3 (7.3, 11.7)	9.4 (7.3, 11.8)	9.7 (7.6, 12.2)	8.9 (7.0, 11.3)	8.6 (6.8, 11.2)
<i>Homo/Pan</i>	$t_6$	7.5 (5.7, 9.6)	7.6 (5.8, 9.7)	7.9 (6.0, 10.0)	7.2 (5.5, 9.2)	6.9 (5.3, 9.1)
Crown Cercopithecoidea	$t_7$	14.1 (11.0, 17.7)	14.3 (11.1, 18.0)	14.8 (11.5, 18.6)	13.6 (10.6, 17.1)	13.1 (10.2, 17.1)
Cercopithecini/Papionini	$t_8$	10.3 (8.1, 13.0)	10.5 (8.2, 13.1)	10.9 (8.5, 13.6)	10.0 (7.8, 12.5)	9.6 (7.6, 12.4)
<i>Papio/Macaca</i>	$t_9$	7.2 (5.4, 9.4)	7.3 (5.5, 9.5)	7.6 (5.7, 9.9)	6.9 (5.2, 9.1)	6.7 (5.0, 9.0)
Crown Platyrrhini	$t_{10}$	25.1 (20.1, 31.0)	25.4 (20.2, 31.2)	26.3 (20.8, 32.2)	24.1 (19.3, 29.6)	23.4 (18.7, 29.7)
Intra Platyrrhini	$t_{11}$	20.5 (16.3, 25.3)	20.7 (16.5, 25.5)	21.4 (17.0, 26.4)	19.7 (15.7, 24.3)	19.1 (15.3, 24.3)
Intra Platyrrhini	$t_{12}$	20.0 (15.9, 24.8)	20.3 (16.0, 25.0)	21.0 (16.5, 25.8)	19.2 (15.3, 23.8)	18.6 (14.8, 23.8)
Crown Strepsirrhini	$t_{13}$	49.8 (35.9, 72.0)	53.3 (37.2, 77.3)	50.7 (36.9, 72.6)	48.3 (36.2, 66.2)	51.0 (36.6, 69.3)
Intra Lemuriformes	$t_{14}$	34.4 (23.5, 49.1)	36.4 (24.2, 52.6)	35.3 (24.0, 50.4)	33.5 (23.3, 46.0)	35.0 (24.1, 48.4)

Table 4: Posterior means and 95% confidence intervals of divergence times (in units of millions of years) under different fossil-calibration models. NB: Variable rates among lineages are accommodated using the auto-correlated rate-drift model (clock 3). The HKY+ $\Gamma_5$  model is used to calculate the likelihood, with different parameters assigned for the two loci. The node labels  $t_i$  are illustrated in Figure 2.

	Node	Divergence date	Fossil date	Discrepancy (%)
Crown Primates	$t_1$	84.5 (69.2, 103.5)	55	54
Crown Anthroidea	$t_2$	47.2 (38.9, 56.5)	35	35
Crown Catarrhini	$t_3$	31.0 (25.1, 37.7)	20	55
Crown great apes	$t_4$	19.2 (15.1, 24.1)	13	48
<i>Homo/Pan</i>	$t_6$	7.5 (5.7, 9.6)	7	7
Crown Cercopithecoidea	$t_7$	14.1 (11.0, 17.7)	11	28
Crown Platyrrhini	$t_{10}$	25.1 (20.1, 31.0)	16	57
Crown Strepsirrhini	$t_{13}$	49.8 (35.9, 72.0)	37	35

Table 5: Mean estimated divergence dates (in units of millions of years) for the Poisson sampling model, approximate ages of the oldest known, relatively broadly accepted, fossil representatives of each crown group, and the discrepancy between the two dates expressed as a proportion of the fossil’s age, for the major primate divergence events. Sources for the fossil dates:  $t_1$ : Ni et al. (2004), Smith et al. (2006);  $t_2, t_{13}$ : Seiffert (2007);  $t_3$ : Miller et al. (2009);  $t_4$ : Chaimanee et al. (2003);  $t_6$ : Brunet et al. (2002);  $t_7$ : Andrews et al. (1996);  $t_{10}$ : Kay et al. (2008).

FIGURE 1 CAPTION: Marginal posterior distributions for the primate ( $t_1$ ) and anthropoid ( $t_2$ ) divergence times. Results are shown for three modelling scenarios. Dates are in units of millions of years.

FIGURE 2 CAPTION: Rooted tree showing mean estimates of node ages  $t_1, \dots, t_{14}$  obtained when using the Poisson sampling model to provide prior distributions for the  $t_1$  and  $t_2$  node ages. The numbers in parentheses after the species name indicate that the sequence for that species is only available at that locus. Species without labels have data for both loci.

FIGURE 3 CAPTION: Figure showing the posterior date estimates of seven nodes in the primate phylogeny (see Table 4). For each node, five different estimates are shown, depending on which prior distribution was used in the molecular analysis. In order (from top to bottom) they are the estimates from the Poisson, K-T, binomial, gamma and bounds models. The white hatch shows the posterior mean age estimate, and the black box shows posterior 95% credibility intervals (CI). For the primate ( $t_1$ ) and anthropoid ( $t_2$ ) divergences, the 95% CI from the fossil calibrations are shown as grey lines. The arrowheads show estimates taken from the literature (gray arrowhead - Steiper and Young (2009), black arrowhead - Steiper and Young (2006)). The node labels correspond to those given in Table 4.

FIGURE 4 CAPTION: Infinite site plot. Posterior 95% credibility interval width against posterior means of node ages for the Poisson

sampling model.

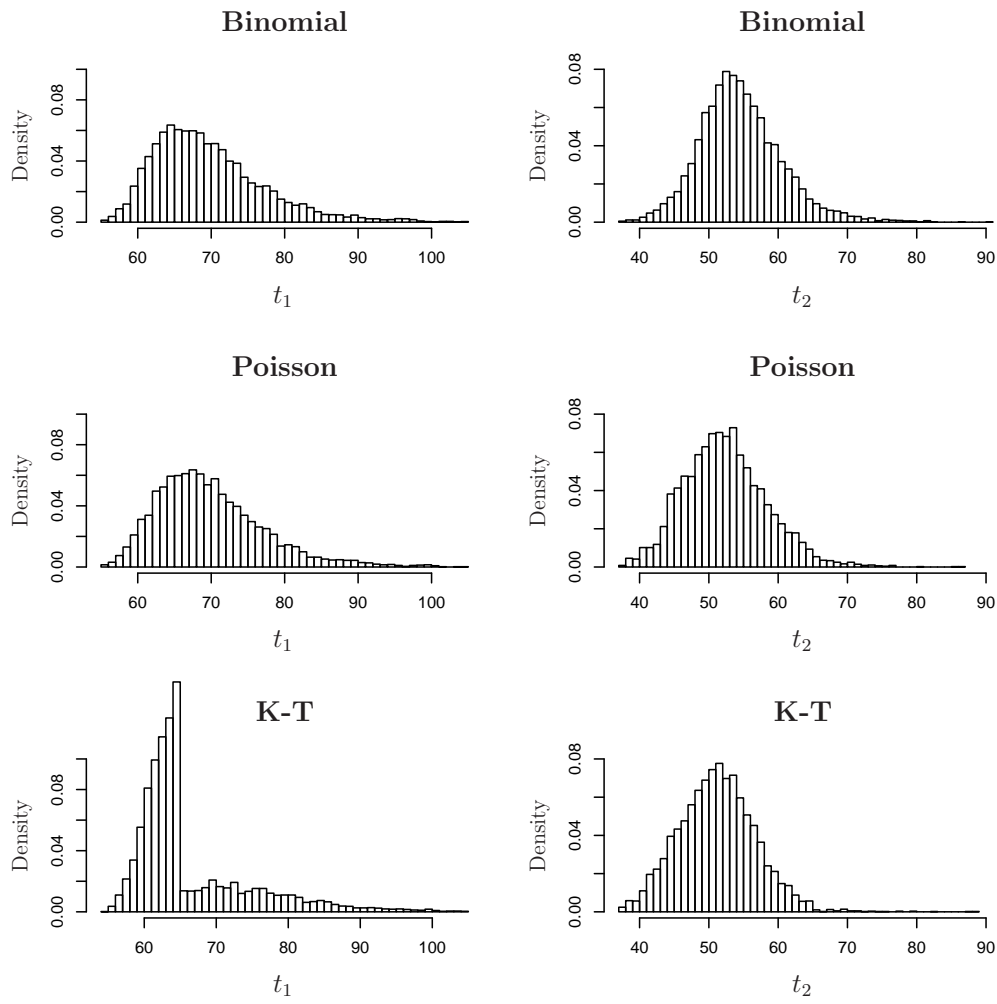


Figure 1:

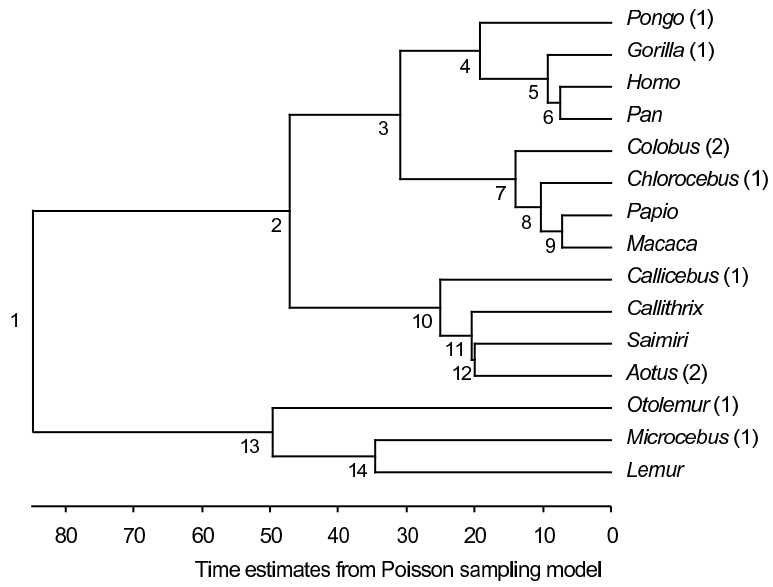


Figure 2:

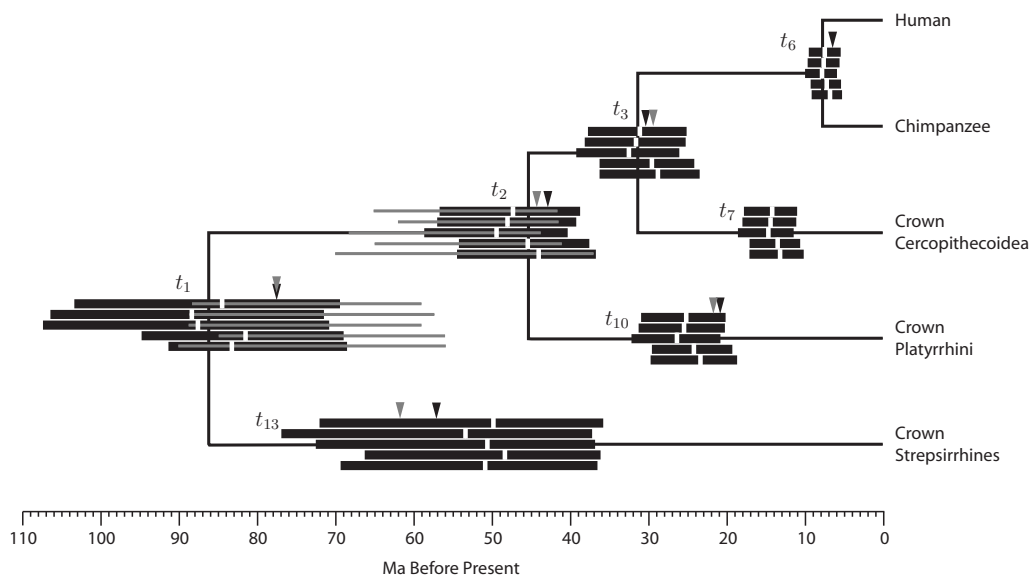


Figure 3:

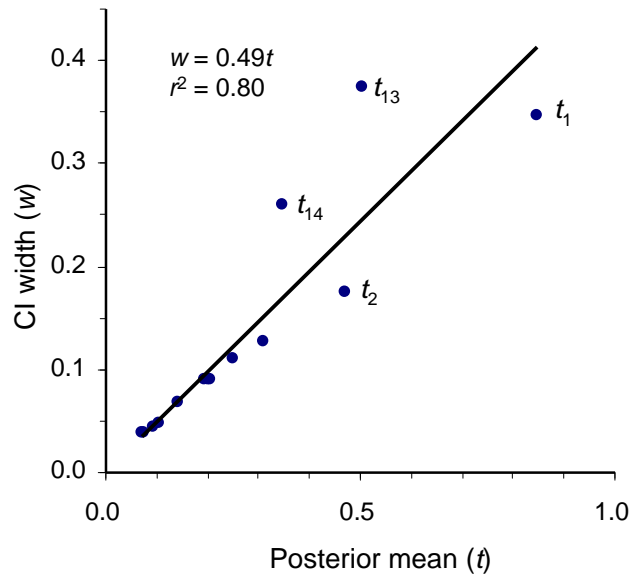


Figure 4: