



This is a repository copy of *ppGpp negatively impacts ribosome assembly affecting growth and antimicrobial tolerance in Gram-positive bacteria*.

White Rose Research Online URL for this paper:
<http://eprints.whiterose.ac.uk/96338/>

Version: Accepted Version

Article:

Corrigan, R., Bellows, L.E., Wood, A. et al. (1 more author) (2016) ppGpp negatively impacts ribosome assembly affecting growth and antimicrobial tolerance in Gram-positive bacteria. *Proceedings of the National Academy of Sciences of the United States of America*, 113 (12). ISSN 0027-8424

<https://doi.org/10.1073/pnas.1522179113>

Reuse

Unless indicated otherwise, fulltext items are protected by copyright with all rights reserved. The copyright exception in section 29 of the Copyright, Designs and Patents Act 1988 allows the making of a single copy solely for the purpose of non-commercial research or private study within the limits of fair dealing. The publisher or other rights-holder may allow further reproduction and re-use of this version - refer to the White Rose Research Online record for this item. Where records identify the publisher as the copyright holder, users can verify any specific terms of use on the publisher's website.

Takedown

If you consider content in White Rose Research Online to be in breach of UK law, please notify us by emailing eprints@whiterose.ac.uk including the URL of the record and the reason for the withdrawal request.



eprints@whiterose.ac.uk
<https://eprints.whiterose.ac.uk/>

ppGpp negatively impacts ribosome assembly affecting growth and antimicrobial tolerance in Gram-positive bacteria

Rebecca M. Corrigan^{a1}, Lauren E. Bellows^b, Alison Wood^a, and Angelika Gründling^{b1}

^a Department of Molecular Biology and Biotechnology, University of Sheffield, Sheffield, S10 2TN, UK. ^b Section of Microbiology and MRC Centre for Molecular Bacteriology and Infection, Imperial College London, London, SW7 2AZ, UK.

Submitted to Proceedings of the National Academy of Sciences of the United States of America

The stringent response is a survival mechanism utilized by bacteria to deal with stress. It is coordinated by the nucleotides guanosine tetra- and pentaphosphate ((p)ppGpp), which interact with target proteins in order to promote bacterial survival. Although this response has been well characterized in proteobacteria, very little is known about the effectors of this signaling system in Gram-positive species. Here we report on the identification of seven target proteins for the stringent response nucleotides in the Gram-positive bacterium *Staphylococcus aureus*. We demonstrate that the GTP synthesis enzymes HprT and Gmk bind with a high affinity leading to an inhibition of GTP production. In addition, we identified five putative GTPases - RsgA, RbgA, Era, HflX and ObgE as (p)ppGpp target proteins. We show that RsgA, RbgA, Era, HflX are functional GTPases and that their activity is promoted in the presence of ribosomes, but strongly inhibited by the stringent response nucleotides. By characterizing the function of RsgA *in vivo*, we ascertain that this protein is involved in ribosome assembly, with an *rsgA* deletion strain, or a strain inactivated for GTPase activity, displaying decreased growth, a decrease in the amount of mature 70S ribosomes and an increased level of tolerance to antimicrobials. We additionally demonstrate that the interaction of ppGpp with cellular GTPases is not unique to the Staphylococci, as homologues from *Bacillus subtilis* and *Enterococcus faecalis* retain this ability. Taken together, this study reveals ribosome inactivation as a new mechanism through which the stringent response functions in Gram-positive bacteria.

ribosome | stringent response | tolerance | ppGpp | Staphylococcus aureus

The stringent response is a complex mechanism utilized by all bacteria to deal with cell stresses including amino acid deprivation, carbon source starvation, fatty acid depletion and osmotic stress (1-3). This response, first characterized over 40 years ago, is coordinated by the rapid synthesis of the nucleotides guanosine tetra- and pentaphosphate, collectively termed (p)ppGpp (2). Once produced, these alarmones are responsible for controlling a cellular switch resulting in the downregulation of active growth and an upregulation of genes involved in the stress response (4). Additionally these nucleotides have been shown to be vital for controlling the transition of bacteria into stationary phase, biofilm formation, sporulation, virulence, antibiotic tolerance and persist cell formation (5-9).

In proteobacteria, it has long been established that after enduring stress, (p)ppGpp is synthesized by both the monofunctional enzyme RelA and the bifunctional enzyme SpoT, a protein that also contains (p)ppGpp hydrolase activity (4). RelA associates with ribosomes and synthetase activity is triggered upon an accumulation of uncharged tRNA sensed by the ribosome during amino acid depletion (10-13). The synthetase activity of SpoT, on the other hand, is induced by other stresses such as fatty acid depletion (1). Once synthesized the major effect of (p)ppGpp production is an alteration in gene transcription, where stable RNAs (rRNA and tRNA), as well as cell proliferation

genes are downregulated and genes involved in the stress and starvation response are upregulated (4). In Gram-negative bacteria this transcriptional shift is mediated by (p)ppGpp interacting with the RNA polymerase (RNAP), which in combination with the transcription factor DksA, modulates gene expression on a transcriptional level (3, 14). Aside from the RNAP, there are at least 15 other direct (p)ppGpp target proteins in *Escherichia coli*, such as the translation elongation factors EFG and EF-Tu, the DNA primase DnaG and a number of amino acid decarboxylases that are involved in the acid stress response (15-17). These nucleotides also play major roles in controlling bacterial persistence in Gram-negative bacteria by activating toxin-antitoxin systems and triggering slow growth (9), leading to cells that persist in the host following antibiotic treatment.

In *Staphylococcus aureus*, as well as other Gram-positive species, (p)ppGpp is synthesized by RSH, a bifunctional RelA/SpoT homologue that contains both a synthetase and hydrolase domain (18, 19). The genome of *S. aureus* also encodes two other monofunctional synthetases, RelP and RelQ, and transcription of these enzymes increases when cells are exposed to cell wall-targeting antimicrobials (20, 21). Recent work on *S. aureus* has shown that the ability to switch on the stringent response is essential for its virulence and is required for the organism to cause chronic infections (22-25).

In contrast to the situation in proteobacteria, very little is known about the binding targets for (p)ppGpp in Gram-positive species. These nucleotides do not interact with the RNAP (26)

Significance

When bacteria encounter stresses such as nutrient deprivation they react by switching on the stringent response, the effects of which are mediated by two nucleotides collectively referred to as (p)ppGpp. These nucleotides function by binding to target proteins leading to bacterial cells shutting down active growth and entering a state that promotes survival. In *Staphylococcus aureus* relatively little is known about the target proteins with which these nucleotides interact. In this work, a genome-wide nucleotide-protein interaction screen was used to identify protein targets of (p)ppGpp in order to fully establish the pathways these nucleotides control in Gram-positive bacteria. In doing so we identify several previously unknown targets with roles in ribosomal assembly, cell growth and antimicrobial tolerance.

Reserved for Publication Footnotes

137
138
139
140
141
142
143
144
145
146
147
148
149
150
151
152
153
154
155
156
157
158
159
160
161
162
163
164
165
166
167
168
169
170
171
172
173
174
175
176
177
178
179
180
181
182
183
184
185
186
187
188
189
190
191
192
193
194
195
196
197
198
199
200
201
202
203
204

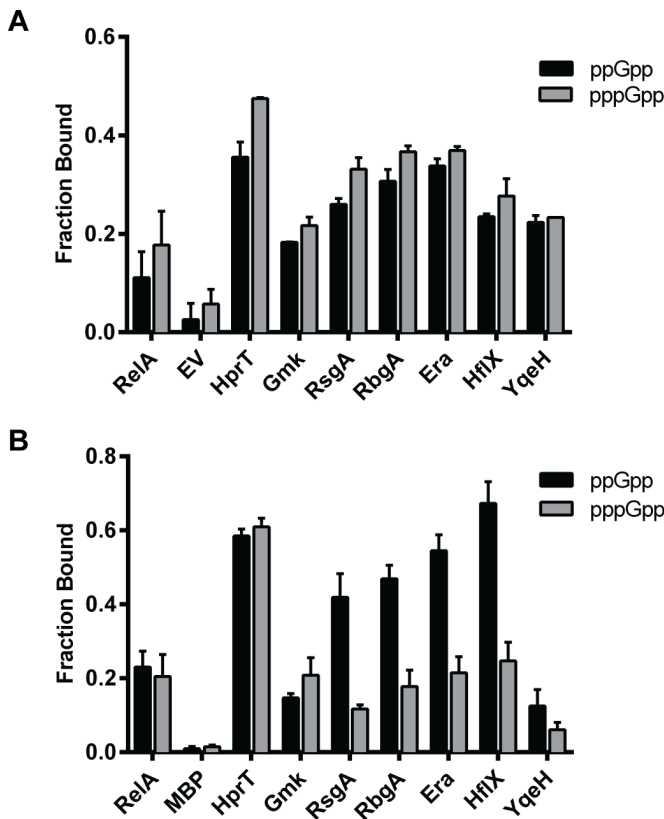


Fig. 1. Confirmation of the interactions between (p)ppGpp and target proteins. (A) DRaCALA with ³²P-labeled (p)ppGpp and whole cell lysates prepared from *E. coli* strains overexpressing the different target proteins. (B) DRaCALA with purified recombinant proteins and ³²P-labeled (p)ppGpp. All experiments were carried out in quadruplicate with the data plotted using the GraphPad Prism software.

and few direct binding proteins have been identified. It has been established that the depletion of cellular GTP, the substrate for (p)ppGpp synthesizing enzymes, plays a significant role in initiating the stringent response in these organisms (27). Decreased GTP levels lead to a decrease in the transcription of mRNAs with a GTP initiating nucleotide, which in Gram-positive bacteria includes most rRNA promoters (26). Aside from substrate depletion, (p)ppGpp also actively inhibit GTP synthesis in *Bacillus subtilis* and *Enterococcus faecalis* by blocking the functions of HprT and Gmk, two enzymes involved in the GTP synthesis pathway (28-30). GTP levels are also important in some species for the activation of CodY, a global transcriptional regulator. In a GTP-bound state CodY binds to DNA and represses the transcription of a number of genes involved in the adaptation to nutrient limitation. However, upon entry of cells in stationary phase, GTP levels decrease leading to the release of CodY from DNA, de-repression and transcription of target genes (31). Intracellular GTP levels do therefore play a significant role in modulating the stringent response. However, given the identification of multiple (p)ppGpp-binding proteins in *E. coli* it seems unlikely that GTP homeostasis is the sole regulatory function for (p)ppGpp in Gram-positive species.

In this study we used a genome-wide nucleotide-protein interaction screen to identify novel targets for the stringent response nucleotides (p)ppGpp in *S. aureus*. In addition to confirming that both HprT and Gmk from *S. aureus* can interact with these nucleotides, we demonstrate that (p)ppGpp bind with high affinity and specificity to five putative GTPases - RsgA, RbgA, Era, HflX and ObgE implicated in ribosome assembly. Characterization

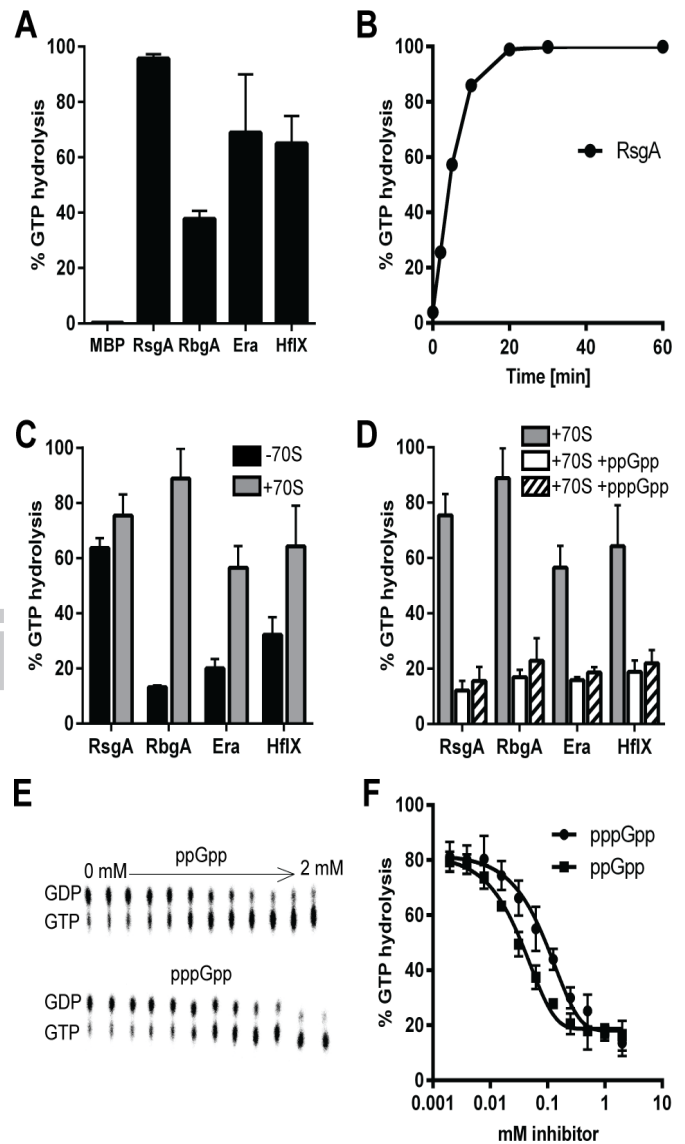


Fig. 2. GTPase activity assays in the presence or absence of ribosomes and (p)ppGpp. (A) The GTPase activity of recombinant RsgA, RbgA, Era and HflX were determined by incubating 10 μ M protein with α -³²P-GTP overnight at 37°C. Hydrolysis was monitored by TLC and the % GDP formed was quantified using ImageJ and values plotted using GraphPad Prism. (B) The enzymatic activity of RsgA was monitored as above with samples withdrawn over a 1 h period. (C) Quantification of GTPase activity in the presence of 70S ribosomes. GTPase assays were set up as above in the absence or presence of 70S ribosomes. Reactions with RsgA were stopped after 10 min, while reactions with RbgA, Era and HflX were incubated for 60 min. (D) Analysis of GTPase activity of all four target proteins in the presence of (p)ppGpp. Hydrolysis in the presence of 70S ribosomes was monitored in the presence of either 1 mM ppGpp or pppGpp. Reactions with RsgA were stopped after 10 min, while reactions with RbgA, Era and HflX were incubated for 60 min. (E) The activity of RsgA was monitored in the presence of increasing concentrations of ppGpp and pppGpp. Reactions were stopped after 10 min and analyzed by TLC. (F) Quantification of the GTPase activity of RsgA in the presence of (p)ppGpp. The enzyme reactions were set up as in (E) and the % GDP formed quantified using ImageJ. The data were fitted using a dose response inhibition algorithm in GraphPad Prism with the corresponding IC50 value given. All experiments were performed in triplicate and averages and standard deviations were plotted using GraphPad Prism.

of RsgA, RbgA, Era, HflX revealed that their GTPase activity is increased in the presence of ribosomes but inhibited by the stringent response nucleotides. With this we identify a new mech-

205
206
207
208
209
210
211
212
213
214
215
216
217
218
219
220
221
222
223
224
225
226
227
228
229
230
231
232
233
234
235
236
237
238
239
240
241
242
243
244
245
246
247
248
249
250
251
252
253
254
255
256
257
258
259
260
261
262
263
264
265
266
267
268
269
270
271
272

273
274
275
276
277
278
279
280
281
282
283
284
285
286
287
288
289
290
291
292
293
294
295
296
297
298
299
300
301
302
303
304
305
306
307
308
309
310
311
312
313
314
315
316
317
318
319
320
321
322
323
324
325
326
327
328
329
330
331
332
333
334
335
336
337
338
339
340

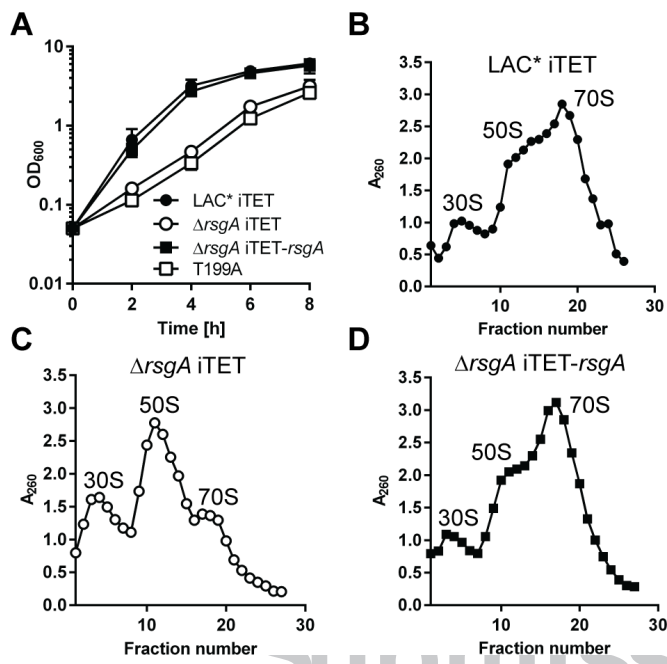


Fig. 3. Deletion of *rsgA* negatively affects the growth and ribosomal composition of *S. aureus*. (A) Growth of *S. aureus* strains LAC* iTET, LAC* Δ *rsgA* iTET, LAC* Δ *rsgA* iTET-*rsgA* and LAC* Δ *rsgA* iTET-*rsgA* T199A. Overnight cultures grown in the presence of 100 ng/ml Atet were diluted to an OD₆₀₀ of 0.01 (time = 0 h) and grown in the presence of Atet for 8 h. Growth curves were performed 3 times and average OD₆₀₀ readings and standard deviations plotted. (B-D) Effect of *rsgA* deletion on ribosomal profiles. Extracts from wild-type LAC* iTET (B), LAC* Δ *rsgA* iTET (C) and LAC* Δ *rsgA* iTET-*rsgA* (D) grown to exponential phase were fractionated by sucrose density gradient centrifugation. Gradients were fractionated by upwards displacement and analyzed for RNA content by measuring the absorbance at 260 nm. Experiments were performed in triplicate with one representative graph shown.

anism by which the stringent response alarmones can control cell proliferation in Gram-positive bacteria at a post-transcriptional level by actively interfering with ribosome assembly to inhibit cell growth and promote antimicrobial tolerance.

Results

Identification of (p)ppGpp-binding proteins using a genome-wide nucleotide-protein interaction screen

Our previous work demonstrated the use of a differential radial capillary action of ligand assay (DRaCALA)-based OR-Feome screen as a high-throughput platform for identifying interaction partners for c-di-AMP (32). In order to adapt this screen to identify (p)ppGpp binding proteins, radiolabeled (p)ppGpp was synthesized (Figs. S1A, S1B and S1C) and used in combination with an *S. aureus* protein expression library that contains 2,343 ORFs from the genome of the *S. aureus* strain COL (85.5% of the total number of ORFs in the genome) fused to a His-MBP-tag and expressed in *E. coli*. To perform the genome-wide screen, the *S. aureus* His-MBP protein expression library strains were grown up, protein expression induced and crude whole cell extracts prepared. These lysates were arrayed in a 96 well format and used in DRaCALA binding assays with a 1:1 mix of radiolabeled pppGpp:ppGpp (Fig. S1D). An average fraction bound for each plate was calculated as described by Roelofs *et al.* (33) and positive interactions were deemed as being 2.4-times greater than the background. This led to the identification of seven putative (p)ppGpp target proteins.

To interrogate the binding further, the plasmid from each of the seven strains was sequenced to confirm the identity of each gene and retransformed into *E. coli* cells. Protein expression

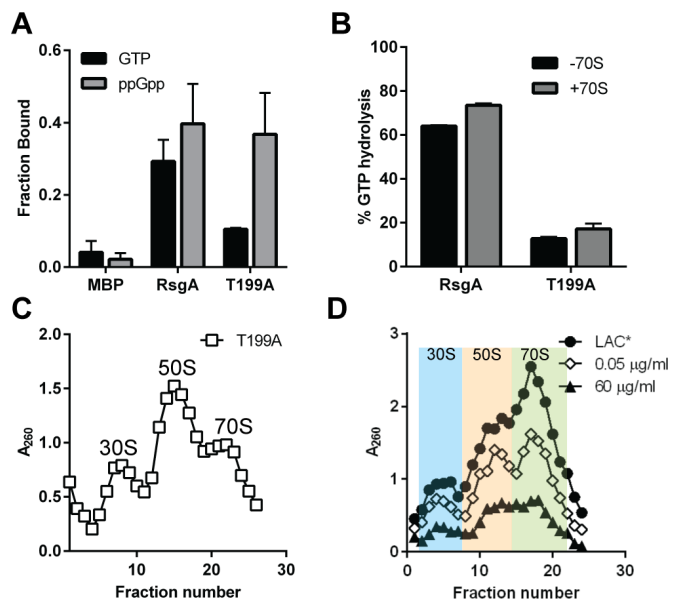


Fig. 4. GTPase activity of RsgA is crucial for its function. (A) DRaCALA with purified recombinant MBP, MBP-RsgA (RsgA) or MBP-RsgA-T199A (T199A) protein and ³²P-labeled GTP and ppGpp. All experiments were carried out in triplicate. The data were plotted using the GraphPad Prism software. (B) The GTPase activity of recombinant RsgA and the T199A variant were analyzed in the absence or presence of 70S ribosomes. Hydrolysis was monitored by TLC, the % GDP formed was quantified using ImageJ and values plotted using GraphPad Prism. (C) Effect of inactivation of GTPase activity on ribosomal profiles. Strain LAC* Δ *rsgA* iTET-*rsgA* T199A was fractionated by sucrose density gradient centrifugation and analyzed for RNA content by measuring the absorbance at 260 nm. (D) Effect of (p)ppGpp production on ribosomal profiles. The production of (p)ppGpp was induced by the addition of 0.05 μ g/ml or 60 μ g/ml mupirocin to exponentially grown cultures. 30 min post induction cells were harvested and extracts analyzed by sucrose density gradient centrifugation. Peaks corresponding to 70S, 50S and 30S are highlighted in green, orange and blue, respectively. Experiments were performed in triplicate with one representative graph shown.

was once again induced, whole cell lysates prepared and binding to both pppGpp and ppGpp examined (Fig. 1A). Fraction bound values higher than the empty vector negative control were observed for all seven strains, indicating positive binding interactions. Following this, all seven His-MBP-fused proteins were purified by Ni²⁺-affinity and size exclusion chromatography (Fig. S1E) and the recombinant proteins used in DRaCALA binding assays with radiolabeled (p)ppGpp (Fig. 1B). Binding assays confirmed positive interactions for six of the target proteins, namely HprT, Gmk, RsgA, RbgA, Era and HflX. The binding to YqeH however, was very weak preventing a determination of binding affinity. For this reason, this protein was not investigated further.

(p)ppGpp bind specifically to HprT and Gmk from S. aureus to inhibit their function

Of the six identified (p)ppGpp-binding proteins, two have previously been shown to interact with these nucleotides, namely Gmk and HprT, two proteins involved in GTP synthesis. Gmk is the enzyme responsible for the conversion of GMP to GDP during *de novo* synthesis of GTP, whilst HprT is involved in the salvage pathway, converting both hypoxanthine to IMP and guanine to GMP. The activities of these enzymes from both *B. subtilis* and *E. faecalis*, as well as Gmk from *S. aureus* (Gmk_{SA}), have been shown to be inhibited in the presence of (p)ppGpp, thus lowering intracellular GTP levels to a range that supports survival during starvation (28-30).

Using the purified *S. aureus* Gmk and HprT proteins in DRaCALAs, we show here that both proteins have stronger affinities for ppGpp and pppGpp over GTP (Figs. S2A and S2B, Table S1).

341
342
343
344
345
346
347
348
349
350
351
352
353
354
355
356
357
358
359
360
361
362
363
364
365
366
367
368
369
370
371
372
373
374
375
376
377
378
379
380
381
382
383
384
385
386
387
388
389
390
391
392
393
394
395
396
397
398
399
400
401
402
403
404
405
406
407
408

409
410
411
412
413
414
415
416
417
418
419
420
421
422
423
424
425
426
427
428
429
430
431
432
433
434
435
436
437
438
439
440
441
442
443
444
445
446
447
448
449
450
451
452
453
454
455
456
457
458
459
460
461
462
463
464
465
466
467
468
469
470
471
472
473
474
475
476

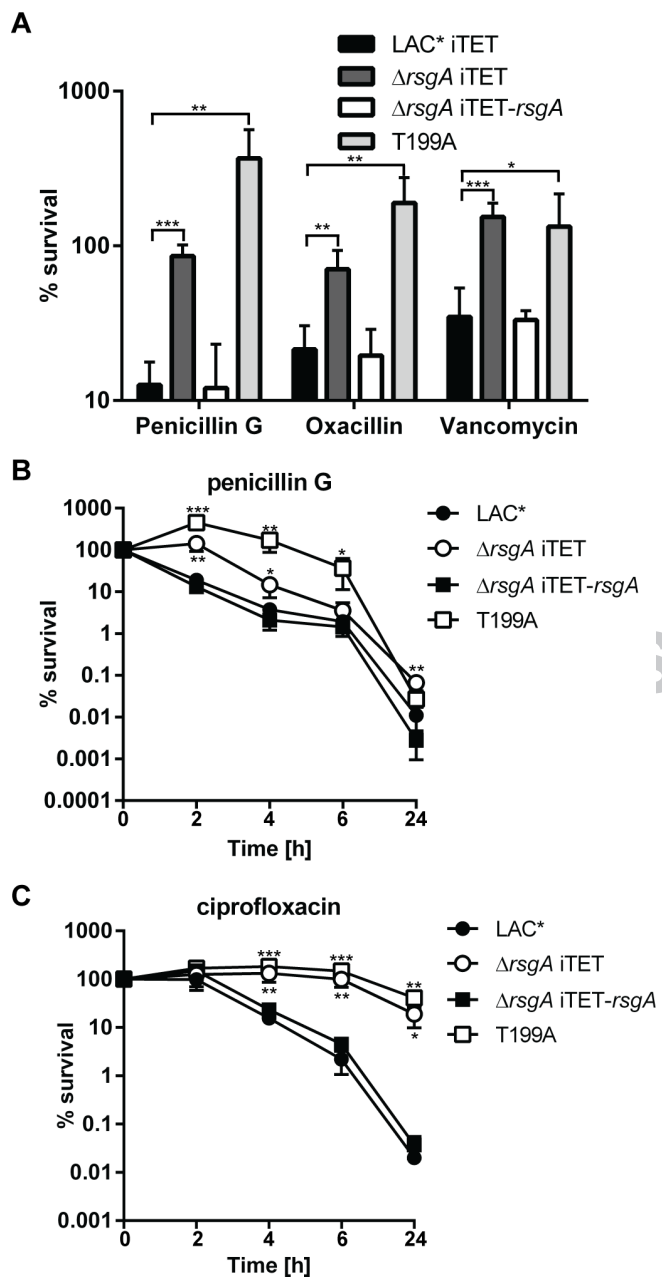


Fig. 5. Strains lacking RsgA, or producing an inactive GTPase variant, exhibit increased survival upon exposure to antimicrobials. (A) Exponentially growing LAC* iTET, LAC* $\Delta rsgA$ iTET, LAC* $\Delta rsgA$ iTET-*rsgA* and LAC* $\Delta rsgA$ iTET-*rsgA* T199A cells were exposed to 20 times the MIC of penicillin G, oxacillin and vancomycin. Percentage survival of the mutants and complemented strains after 3 h exposure was compared to that of the wild-type. % survival was calculated by dividing the number of cfu/ml after antibiotic treatment by the number of cfu/ml prior to addition of the antibiotics. Five independent experiments were performed with the averages and standard deviations shown. (B and C) Exponentially growing strains were exposed to 20 times the MIC of penicillin G (B) or ciprofloxacin (C). Percentage survival at the indicated time-points was calculated as for (A). Four independent experiments were performed with the averages and standard deviations shown. For statistical analysis, a two-tailed two sample equal variance Student's t-test was performed between LAC* iTET and LAC* $\Delta rsgA$ iTET or LAC* $\Delta rsgA$ iTET-*rsgA* T199A. Asterisks indicate statistically significant differences (*, P 0.05; **, P 0.01; ***, P 0.001).

Additionally, it was noted that these interactions are specific as only an excess of cold unlabeled ppGpp but not any of the other nucleotides tested could compete for binding with labeled ppGpp

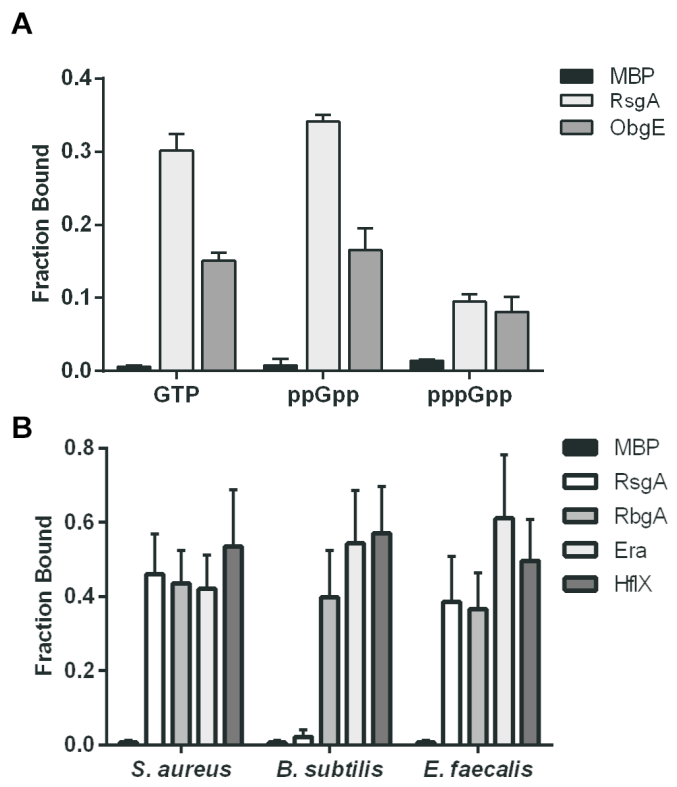


Fig. 6. (p)ppGpp bind GTPases from multiple Gram-positive species. DRACALAs were performed with purified recombinant (A) MBP-tagged ObgE from *S. aureus* and the indicated 32 P-labeled nucleotides or (B) His-tagged RsgA, RbgA, Era and HflX proteins from *S. aureus*, *B. subtilis* and *E. faecalis* and 32 P-labeled ppGpp. All experiment were carried out in triplicate. The data were plotted using the GraphPad Prism software.

or pppGpp (Figs. S2C and S2D). To examine whether (p)ppGpp can directly inhibit the function of the staphylococcal HprT enzyme, and to confirm that Gmks_{SAC} can be inhibited, the enzymatic activities of both proteins were monitored in the presence of both ppGpp and pppGpp. Enzymatic assays monitoring the conversion of guanine to GMP by HprT or GMP to GDP by Gmk were set up as previously described (28). This analysis revealed that the HprT and Gmk enzymes from *S. aureus* are inhibited by both ppGpp and pppGpp (Figs. S2E and S2F).

RsgA, RbgA, Era and HflX are putative GTPases involved in ribosomal biogenesis

Of the four remaining putative (p)ppGpp-binding proteins identified from the *S. aureus* strain COL Gateway Clone Set, RsgA is annotated as a hypothetical protein that has 33% identity over 89% of the protein to the *E. coli* ribosome small-subunit-dependent GTPase A. RbgA and HflX are described as putative GTP-binding proteins. RbgA, whilst not present in *E. coli* and other γ -proteobacteria, shows 55% identity over 94% of the protein to the ribosome biogenesis GTPase A from *B. subtilis* and HflX has 43% identity over 81% of the protein to the high frequency lysogenization locus X GTPase from *E. coli*. Finally, Era is annotated as a GTP-binding protein that has 40% identity over 97% of its length to the *E. coli* Ras-like protein from *E. coli*.

Little is known about the functions of these proteins in *S. aureus*. RsgA from *S. aureus*, *E. coli* and *B. subtilis* is a non-essential protein that is nonetheless important for normal growth (34-36), while both RbgA and Era are essential (37-42). Unlike eukaryotic GTPases that have roles in membrane signaling, members of this family of prokaryotic GTPases appear to have functions linked to ribosome assembly. In *E. coli* it has been demonstrated that Era and RsgA bind to the 30S subunit of the ribosome and are

477
478
479
480
481
482
483
484
485
486
487
488
489
490
491
492
493
494
495
496
497
498
499
500
501
502
503
504
505
506
507
508
509
510
511
512
513
514
515
516
517
518
519
520
521
522
523
524
525
526
527
528
529
530
531
532
533
534
535
536
537
538
539
540
541
542
543
544

545
546
547
548
549
550
551
552
553
554
555
556
557
558
559
560
561
562
563
564
565
566
567
568
569
570
571
572
573
574
575
576
577
578
579
580
581
582
583
584
585
586
587
588
589
590
591
592
593
594
595
596
597
598
599
600
601
602
603
604
605
606
607
608
609
610
611
612

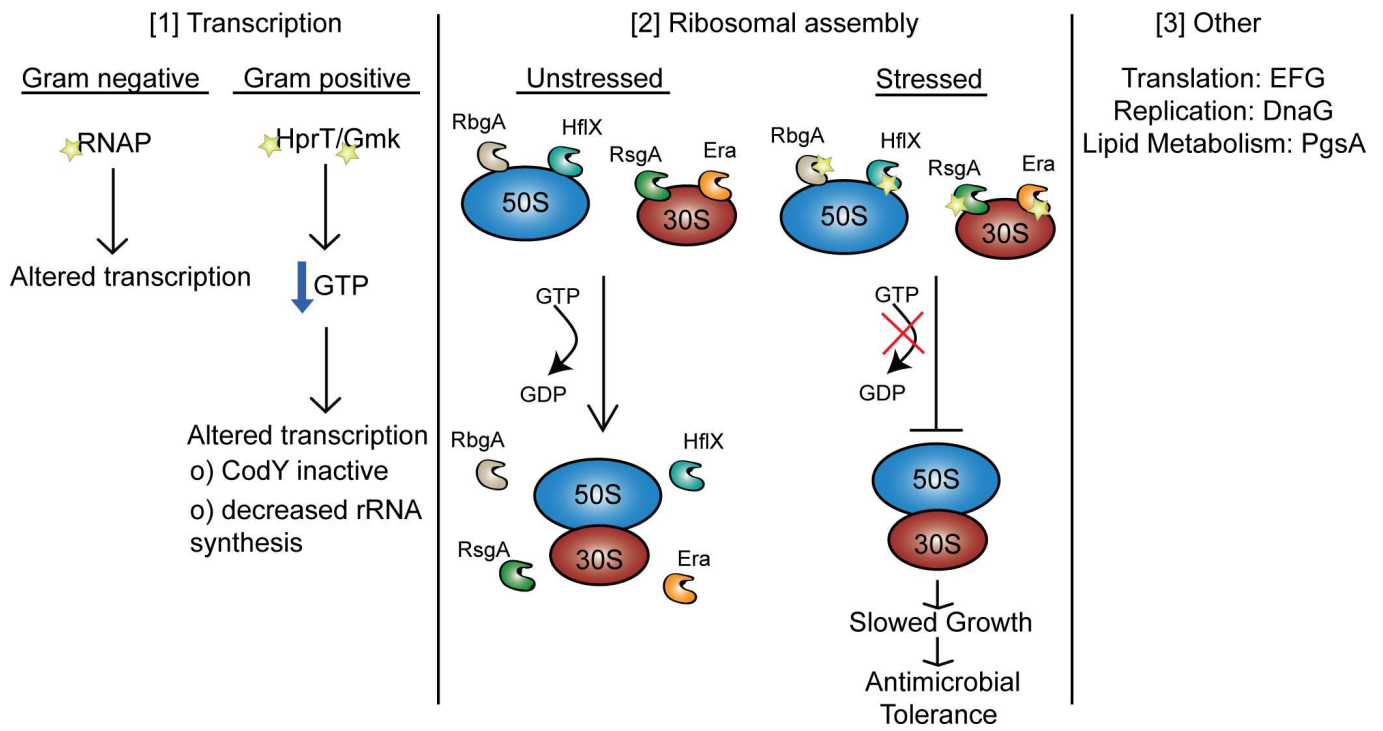


Fig. 7. Model depicting the functions of (p)ppGpp. Upon exposure to nutrient deprivation the bacteria respond by activating the stringent response. This response is controlled by two nucleotide messengers – ppGpp and pppGpp, which function to shut down active growth and promote survival. [1] Once synthesized these nucleotides can bind to the RNAP in Gram-negative bacteria leading to altered transcription and decreased growth. In Gram-positive bacteria these nucleotides instead bind to HprT and Gmk, two enzymes involved in the GTP synthesis pathway. Here they inactivate the functions of these enzymes, resulting in decreased intracellular levels of GTP. This in turn results in altered transcription of a number of genes, mediated in part by the GTP-regulated control of the transcriptional repressor CodY and also by a decrease in the availability of GTP as an initiating nucleotide for transcription. [2] (p)ppGpp can bind to bacterial GTPases. In unstressed cells these proteins associate with the ribosome and are thought to control the ribosome maturation processes leading to the formation of 70S ribosomes. In stressed cells the synthesis and binding of (p)ppGpp to these enzymes inhibits their GTPase activity, resulting in decreased 50S and 30S association and a reduction in the number of mature 70S ribosomes. This in turn slows growth, a consequence of which is an increase in the tolerance of bacterial cells to antimicrobials. [3] In addition to factors controlling transcription and ribosomal assembly, (p)ppGpp can also bind to proteins involved in translation, such as the elongation factors EFG and EF-Tu, replication, such as DnaG or lipid metabolism. Binding of (p)ppGpp to these proteins inhibits their function, again promoting a slower growth state.

critical for 30S ribosomal subunit biogenesis (36, 43, 44). Cryo-electron micrograph images of both proteins in complex with the 30S subunit suggest a chaperoning role, where they may prevent premature association of the 30S with the 50S subunit presumably until the 30S subunit has fully matured (44, 45). Indeed depletion of these proteins in bacterial cells leads to a decrease in 70S ribosomes with a buildup of 50S and 30S subunits (36, 43, 46). In contrast, both RbgA and HflX have been shown to bind to the 50S subunit and are required for its biogenesis, as cells depleted for RbgA show a reduction in 70S ribosomes, while free 50S subunits are completely missing (40, 42, 47, 48, 49). HflX has also been implicated as a ribosome-splitting factor, involved in rescuing stalled ribosomes during stress (50).

(p)ppGpp binds specifically to the four novel target proteins, RsgA, RbgA, Era and HflX

In order to determine binding kinetics and interaction specificities between (p)ppGpp and the four putative GTPases, DRACALAs were performed with the purified proteins. Binding affinities in the low μM range were established for all the proteins and ppGpp (Fig. S3 and Table S1). With the exception of RsgA, the affinities of all four proteins to pppGpp and GTP were 4-16 times weaker, indicating that ppGpp may be a more potent effector in *S. aureus* than pppGpp (Fig. S3 and Table S1). RsgA, on the other hand, bound ppGpp and GTP with similar affinities, suggesting that the occupancy of the binding site with either ligand is going to depend heavily on the intracellular nucleotide concentration at any given time during the growth cycle. Additionally it was determined that the interactions between each of

these proteins and ppGpp are specific as only an excess of cold unlabeled ppGpp, but not any of the other nucleotides tested, could completely compete for binding with labeled ppGpp (Fig. S4).

RsgA, RbgA, Era and HflX are GTPases, the activities of which are inhibited by (p)ppGpp

To examine whether these four proteins function as GTPases, the proteins were incubated with radiolabeled GTP and the hydrolysis to GDP monitored by thin layer chromatography (TLC). While the control protein MBP was unable to hydrolyze GTP even after overnight incubation, all four (p)ppGpp-binding proteins hydrolyzed GTP, however to varying degrees (Fig. 2A). As RsgA was able to fully hydrolyze GTP upon overnight incubation, a time-course was performed with the enzyme, revealing that full hydrolysis of GTP to GDP occurred within 20 min (Fig. 2B). Previous work on RsgA from *E. coli* reported that the activity of the protein is increased in the presence of ribosomes (36, 51). To determine the effect of ribosomes on the activity of all four GTPases, 70S ribosomes were purified from the community-acquired methicillin-resistant *S. aureus* (CA-MRSA) strain LAC* and included in the GTP hydrolysis assays. While only a slight increase in the enzymatic activity was observed for RsgA, a dramatic increase in activity was noted for RbgA, Era and HflX (Fig. 2C), indicating that these proteins are indeed all intracellular GTPases, the activities of which are stimulated in the presence of the ribosome.

Next, to determine the effect of (p)ppGpp on the enzymatic function, hydrolysis assays were performed in the presence of

613
614
615
616
617
618
619
620
621
622
623
624
625
626
627
628
629
630
631
632
633
634
635
636
637
638
639
640
641
642
643
644
645
646
647
648
649
650
651
652
653
654
655
656
657
658
659
660
661
662
663
664
665
666
667
668
669
670
671
672
673
674
675
676
677
678
679
680

ribosomes and either 1 mM ppGpp or pppGpp. Interestingly, the hydrolysis activity of all four GTPases was significantly inhibited in the presence of either one of the stringent response nucleotides (Fig. 2D). To examine this in more detail the activity of RsgA in the presence of increasing amounts of ppGpp or pppGpp was monitored by TLC, revealing an IC₅₀ of 56.8 ± 8.23 μM for ppGpp and 151 ± 18.9 μM for pppGpp (Figs. 2E and 2F). During stringent response activation, the levels of (p)ppGpp in the bacterial cell rise to 1-2 mM (28, 52), levels that are more than sufficient to inhibit the functions of these enzymes. Altogether, these data reveal that RsgA, RbgA, Era and HflX function as GTPases, the activities of which increase upon association with the ribosome and are inhibited upon interaction with (p)ppGpp. These data further suggest, that upon induction of the stringent response, where cellular levels of (p)ppGpp increase to 1-2 mM and levels of GTP fall, the activities of these enzymes are inhibited, which could affect the assembly of functional ribosomes.

The absence of RsgA, or the inhibition of its GTPase activity, reduces intracellular levels of 70S ribosomes and slows the growth of *S. aureus*

We next wished to examine the contribution of ribosomal GTPases to the growth and viability of *S. aureus*. Both *rbgA* and *era* are essential genes in this organism and so the construction of deletion mutants was not possible. RsgA and HflX, on the other hand, are encoded by non-essential genes and *S. aureus* strains with in-frame deletions in these genes were constructed in the CA-MRSA background strain LAC*. While no growth defect was observed under the conditions tested for the *hflX* mutant strain, the *rsgA* mutant strain grew significantly slower than the wild-type LAC* (Fig. 3A). This growth defect could be complemented fully by the introduction of a plasmid with the *rsgA* gene expressed under anhydrotetracycline-inducible control (Fig. 3A). As RsgA is reported to be involved in ensuring 30S subunit maturation prior to binding the 50S subunit (45), we sought to examine the effect of its absence on the ribosomal content in *S. aureus*. To this end the ribosomal profiles from extracts of the wild-type strain LAC*, the *rsgA* mutant and the complemented strain were evaluated by sucrose density gradient centrifugation (Figs. 3B, 3C and 3D). These profiles revealed that in the absence of RsgA cells contained reduced levels of intact 70S ribosomes, with a concomitant build-up of 50S and 30S subunits, which is in agreement with previous observations that RsgA has a role in ribosomal subunit association.

As reported above, binding of (p)ppGpp inhibits the GTPase activity of RsgA and as shown here a decrease in the number of mature ribosomes is observed in *S. aureus* in its absence. To determine whether inhibiting the GTPase activity of RsgA alone is sufficient to cause this phenotype the nucleotides encoding for a threonine residue at position 199 in the switch 1 region of the GTPase domain of RsgA were mutated to encode for an alanine in order to abolish GTPase activity. This protein variant should have reduced GTPase activity and hence mimic a protein in which the GTPase activity has been inhibited by (p)ppGpp. This variant was expressed and purified from *E. coli* cells. Nucleotide binding assays showed that ppGpp could still interact with this protein variant, indicating that it is not essential for ppGpp binding, however GTP binding was, as expected, severely diminished (Fig. 4A). In agreement with the decrease in GTP binding, the GTPase activity of the protein was drastically reduced, even in the presence of ribosomes (Fig. 4B). This *rsgA* T199A allele was then also introduced on a complementing plasmid into the *rsgA* mutant strain LAC*Δ*rsgA*, creating strain LAC*Δ*rsgA* iTET-*rsgA* T199A. Monitoring the growth of this strain revealed a significant defect, similar to that of the *rsgA* mutant, confirming that inactivation of the GTPase function of this protein results in a slower growth phenotype (Fig. 3A). Next the ribosomal profile for strain LAC*Δ*rsgA* iTET-*rsgA* T199A was determined by sucrose

density gradient centrifugation, revealing that there is, similar to the *rsgA* mutant, a reduction in the amount of mature 70S ribosomes (Fig. 4C). Together these results suggest that in the absence of RsgA, or upon inactivation of its GTPase activity, the maturation of ribosomes is severely affected.

It is known that induction of the stringent response causes a reduction in the overall quantity of ribosomes being produced due to ppGpp-mediated decreases in rRNA transcripts (4, 53). Our previous observations led us to suspect that upon synthesis of (p)ppGpp this nucleotide would also bind to the four ribosomal GTPases and inhibit their activity resulting in a decrease in intact 70S ribosomes. To examine what effect (p)ppGpp synthesis has on the ribosomal profile of wild-type staphylococcal cells, the synthesis of (p)ppGpp was triggered by the addition of a low (0.05 μg/ml) or a high (60 μg/ml) dose of mupirocin for 30 min, conditions known to induce the stringent response, and extracts were analyzed by sucrose density gradient centrifugation. As expected the overall level of ribosomes in the cell was decreased compared to wild-type (Fig. 4D). In addition, the ratio of intact 70S to 50S and 30S subunits altered from 1/0.59/0.29 for the wild-type to 1/0.83/0.44 with the addition of 0.05 μg/ml mupirocin and to 1/0.92/0.36 in the presence of high levels of mupirocin, revealing that the levels of 70S ribosomes were indeed decreased after induction of the stringent response compared to untreated cells grown in the absence of mupirocin (Fig. 4D). Altogether these data lead us to propose a role for (p)ppGpp in binding to intracellular GTPases in order to inhibit ribosomal assembly and promote slow growth.

Inhibition of GTPase activity leads to increased tolerance to antimicrobials

It has been reported that bacterial cultures naturally contain subpopulations of slower growing cells that are associated with persistence and tolerance to antimicrobials (9, 54, 55). In Gram-negative bacteria such as *E. coli* this persistence phenotype has been linked to intracellular (p)ppGpp levels, where high levels of (p)ppGpp activate toxin-antitoxin systems leading to a reduced bacterial growth rate (9). To investigate whether the slower growth phenotype observed in this study as a result of the inactivation of GTPase activity also results in tolerance to antimicrobials, exponentially growing cells of LAC* iTET, LAC*Δ*rsgA* iTET, LAC*Δ*rsgA* iTET-*rsgA* and LAC*Δ*rsgA* iTET-*rsgA* T199A were firstly exposed to three bactericidal antimicrobials, namely the penicillins penicillin G and oxacillin, and the glycopeptide vancomycin (Fig. 5A). Both the Δ*rsgA* mutant and the Δ*rsgA* iTET-*rsgA* T199A strain expressing the inactive GTPase variant, showed increased survival against all three antimicrobials compared to the wild-type, with the introduction of a plasmid expressing the *rsgA* gene restoring susceptibility to wild-type levels (Fig. 5A). To examine this in more detail the strains were exposed to both penicillin G and the fluoroquinolone ciprofloxacin and cfu counts determined over a 24 h period (Fig. 5B and C). Exposure to penicillin G revealed statistically significant differences between the wild-type and mutant strains at the earlier time-points, which became less dramatic over time (Fig. 5B). Incubation of strains with ciprofloxacin showed a highly significant increase in survival for the mutant strains that was still clearly observable after 24 h (Fig. 5C). Together these data indicate that GTPase inactivation leads to an increase in bacterial survival upon exposure to a number of different types of antimicrobials.

GTPases from a number of Gram-positive species are also targets of the stringent response alarmones

RsgA, RbgA, HflX and Era are enzymes belonging to the Era/Obg subfamily of GTPases. ObgE from *E. coli* has been shown to interact with (p)ppGpp (56). To examine whether the homologue of this protein from *S. aureus* also interacts with these nucleotides, the *S. aureus* ObgE protein was purified and binding to (p)ppGpp determined by DRaCALA (Fig. 6A). This revealed

817 a positive interaction that was somewhat weaker than the binding
818 of ppGpp to RsgA. This weaker affinity is potentially why the
819 protein was not identified as an interacting partner using the
820 whole cell lysate screen.

821 In order to determine whether the binding of (p)ppGpp to
822 the GTPases identified in this work is specific for *Staphylococcus*
823 or is a more general regulatory mechanism used by a number of
824 Gram-positive species, the *rsgA*, *rbgA*, *era* and *hflX* genes from
825 *B. subtilis* and *E. faecalis*, as well as *S. aureus* as a control, were
826 amplified and cloned in a vector allowing the expression of the
827 respective proteins as N-terminal His-tagged fusion proteins. All
828 proteins were subsequently expressed in *E. coli* and purified by
829 Ni²⁺-affinity chromatography. DRaCALA binding assays with
830 radiolabeled ppGpp revealed a positive interaction between the
831 nucleotide and all *S. aureus* and *E. faecalis* His-tagged proteins
832 (Fig. 6B). Of the *B. subtilis* homologues, all with the exception of
833 RsgA_{BS} showed strong binding (Fig. 6B). RsgA from *S. aureus*
834 and *B. subtilis* share 45% identity but must have amino acid
835 differences at the binding site for ppGpp that prevent binding.
836 Altogether these data suggest that the binding and inhibition of
837 bacterial GTPases upon induction of the stringent response is
838 likely a ubiquitous process in Gram-positive bacteria.

840 Discussion

841 Upon detection of an environmental stress, bacteria utilize the
842 nucleotides (p)ppGpp to mediate a complex and multipronged
843 approach leading to cells rapidly shutting down growth and
844 entering a persistent state that promotes drug tolerance. The
845 work presented here demonstrates the use of a genome-wide
846 nucleotide-protein interaction screen to systematically identify
847 target proteins for (p)ppGpp in order to unravel the mechanisms
848 behind this process. As expected this screen identified two
849 previously known target proteins for these nucleotides, HprT
850 and Gmk, providing validation for the screening technique. In
851 addition we have identified four previously uncharacterized *S.*
852 *aureus* GTPases as binding partners.

853 GTPases are a superfamily of ubiquitous enzymes with roles
854 in signal transduction, cell division and protein translation. This
855 superfamily consists of several subfamilies, grouped based on
856 identity and function, which include the translation elongation
857 factor subfamily, the FtsY/Ffh subfamily, the Era subfamily
858 and the Obg subfamily. The translation elongation-factor group
859 contains a number of proteins, the functions of which have
860 been demonstrated to be inhibited by (p)ppGpp. For instance
861 (p)ppGpp can inhibit the activities of the elongation factors EFG
862 and EF-Tu (57, 58), as well as the initiation factor IF2 (59),
863 which power the translocation of the ribosome during protein
864 synthesis, the binding of new aminoacyl tRNAs to the ribosome
865 and the formation of the initiation complex, respectively. Several
866 bacterial GTPases of the Era/Obg subfamilies, into which RsgA,
867 RbgA, HflX and Era group, are known to function in ribosomal
868 assembly, more specifically in the maturation of the individual
869 50S and 30S ribosomal subunits prior to mature 70S formation.
870 Only one of these proteins, ObgE from *E. coli*, is known to
871 interact with (p)ppGpp (56). ObgE has been implicated in DNA
872 replication (60) and has also been shown to bind to the Gram-
873 negative (p)ppGpp synthetase/hydrolase enzyme SpoT from *E.*
874 *coli* (61). Similar to RsgA, RbgA, HflX and Era, it has recently
875 been shown that this protein also has a role in 50S and 30S
876 ribosomal subunit association and that (p)ppGpp binding to this
877 protein can enhance the association of ObgE with the 50S subunit
878 of the ribosome (59).

880 In the present work we identify four putative GTPases in
881 *S. aureus* that have the ability to bind specifically and with high
882 affinity to both ppGpp and pppGpp. Enzymatic analysis reveals
883 that these enzymes are all active GTPases, the activities of which
884 are enhanced in the presence of ribosomes but are inhibited when

885 they are bound to (p)ppGpp. The identification of these new
886 target proteins allows us to propose an additional mechanism by
887 which cells undergoing stress can utilize (p)ppGpp in order to
888 rapidly shut down growth, namely by preventing the assembly of
889 70S ribosomes (Fig. 7).

890 The stringent response alarmones help bacteria to adjust their
891 growth to stress conditions in a number of different ways (Fig. 7):
892 [Method 1] In the α , β and γ -proteobacteria, (p)ppGpp bind to
893 the RNAP and in conjunction with the transcription factor DksA,
894 alter the transcription of approximately one third of the genome
895 (3, 14, 62). Due to alterations in amino acid sequences that render
896 (p)ppGpp unable to bind, the RNAP is not a target for (p)ppGpp
897 in the Firmicutes, the Actinobacteria or Deinococcus-Thermus
898 genera (26, 63). Instead (p)ppGpp regulate transcription by binding
899 to HprT and Gmk, enzymes involved in the GTP synthesis
900 pathway (28, 30). These nucleotides are able to bind with high
901 affinity and specificity to both of these enzymes, resulting in an
902 inhibition of enzymatic function (Fig. S2 and Table S1)(28). This
903 inhibition results in a decrease in cellular GTP levels triggering
904 a de-repression of the transcriptional regulator CodY, as well as
905 inhibiting the transcription of many rRNA genes due to the lack
906 of availability of GTP as an initiating nucleotide (27, 28). Of note
907 is that while Gmk is present in Gram-negative species, this protein
908 is not able to bind (p)ppGpp due to conformational changes in
909 the nucleotide-binding pocket, suggesting that the regulation of
910 GTP levels in this way may be unique to Gram-positive organisms
911 (30); [Method 2] ppGpp can interact with GTPases involved in
912 ribosomal assembly to inhibit the association of the 50S and 30S
913 subunits, as now shown in this study. In normal unstressed cells
914 RbgA and HflX bind to the 50S subunit (40, 42, 48, 49), while
915 both RsgA and Era bind to the 30S subunit and interact with
916 the 16S rRNA (35, 36, 43, 44). There is evidence to suggest that
917 this occurs while the proteins are in the GTP-bound state, as for
918 RsgA, RbgA and ObgE, the inhibition of GTPase activity by the
919 binding of non-hydrolysable analogue of GTP causes increased
920 association of the protein to ribosomal subunits (36, 45, 64). Here
921 the proteins are thought to have a caretaking or checkpoint role
922 where they could function to facilitate proper RNA folding or
923 processing or could promote correct protein-protein or protein-
924 RNA interactions. Support for this conclusion comes from the
925 observation that a *B. subtilis* strain depleted for RbgA shows
926 an increase in immature 50S subunits, caused by the incorrect
927 incorporation of the ribosomal protein L6 prior to the binding of
928 other late assembly proteins (42). Additionally it has been shown
929 that deletions of both *era* and *rsgA* results in an accumulation of
930 immature 17S RNA, a precursor of 16S RNA (36, 44), with cryo-
931 EM images suggest a chaperoning role in processing the 3' end
932 of rRNA (44, 45). Furthermore the position at which the RsgA
933 and Era proteins bind to the 30S subunit, as revealed in cryo-EM
934 studies, likely prevents the formation of a complex with the 50S
935 subunit while they are bound (44, 45). Upon the sensing of an
936 as yet unknown signal these proteins are then released from the
937 50S and 30S subunits by GTP hydrolysis, allowing the now mature
938 subunits to interact and form 70S ribosomes. In this way these
939 GTPases control ribosome assembly and so protein synthesis. In
940 strains where these proteins are absent it is likely that the subunits
941 fail to successfully mature, seriously affecting association and
942 mature 70S formation (36, 43).

943 Once (p)ppGpp is present in the cell, we show that these
944 nucleotides can interact with high affinity with RsgA, RbgA,
945 Era and HflX (Fig. S3, S4 and Table S1) and efficiently inhibit
946 their GTPase activity (Fig. 2). In an *rsgA* mutant strain, the lack
947 of GTPase activity results in a decrease in ribosomal subunit
948 association, resulting in fewer mature 70S ribosomes (Fig. 3 and
949 4) (36). The decrease in 70S ribosomes would lead to a stall
950 in protein production, which could explain the observed slower
951 growth phenotype seen for the *rsgA* mutants in the absence of
952

GTPase activity (Fig. 3A), as well as the increase in antimicrobial tolerance (Fig. 5). Further investigation is needed to conclusively say if *rbgA*, *era* or *hflX* mutant strains behave in a similar fashion; [Method 3] In addition to transcription and ribosomal assembly these nucleotides can also bind to a number of other targets such as the *E. coli* proteins PlsB and PgsA to shut down lipid metabolism (65), to DnaG from both Gram-negative and Gram-positive bacteria to inhibit DNA replication (66) or the elongation factor GTPases from *E. coli* to inhibit protein translation (57, 58).

Together these modes of growth inhibition combine to ensure a rapid shut down in bacterial growth. While the exact biochemical mechanism by which (p)ppGpp can inhibit GTPase activity has not yet been fully elucidated, the data presented here clearly point to the control of ribosomal assembly as a potent contributor to bacterial stress survival.

Methods

Bacterial strains and culture conditions. *E. coli* strains were grown in LB or LB-M9 (67) and *S. aureus* strains in TSB at 37°C with aeration. Strains and primers used are listed in Tables S2 and S3. The *S. aureus* (MRSA), Strain COL Gateway® Clone Set, Recombinant in *Escherichia coli*, Plates 1-25, NR-19277 was obtained through BEI Resources, NIAID, NIH. Information on strain construction is provided in SI Methods.

Protein purifications. Proteins were purified from 1-2 L *E. coli* cultures. Cultures were grown to an OD₆₀₀ 0.5-0.7, protein expression induced with 1 mM IPTG and incubated overnight at 16°C. Protein purifications were performed by nickel affinity and size exclusion chromatography as previously described (68, 69). Protein concentrations were determined by A₂₈₀ readings.

Construction of the *S. aureus* ORFeome expression library. 2,343 *E. coli* strains containing pDONR221 vectors with *S. aureus* strain COL ORFs (BEI Resources, NIAID, NIH) were grown in 1.5 ml LB-M9 in 2 ml 96-well deep dishes selecting for kanamycin resistance. The cultures were centrifuged and the plasmids extracted using 96-well MultiScreen_{HTS} PLASMID plates (Millipore). The *S. aureus* gateway ORFeome library was shuttled from the pDONR221 entry plasmids into the protein overexpression destination vector pVL847-GW using LR clonase enzyme II as per manufacturer's guidelines (Invitrogen). Subsequently, the destination plasmid library was introduced into *E. coli* strain T7IQ selecting for gentamicin resistance.

Preparation of *E. coli* whole cell lysates. Protein expression strains were grown in LB-M9 medium overnight at 30°C and protein induction subsequently induced for 6 h with 1 mM IPTG. Bacteria were collected by centrifugation and suspended in 1/10th of their original volume in 40 mM Tris pH 7.5, 100 mM NaCl, 10 mM MgCl₂ binding buffer containing 2 mM PMSF, 20 µg/ml DNase and 0.5 mg/ml lysozyme. Cells were lysed by 3 freeze/thaw cycles. Lysates were directly used in binding assays or stored at -20°C.

Differential radial capillary action of ligand assay (DRaCALA). This assay was performed as described previously with slight modifications as outlined in SI Methods (32, 33).

Synthesis of (p)ppGpp. ³²P-labeled pppGpp was synthesized from α-³²P-GTP (Perkin Elmer) by incubating 55.5 nM α-³²P-GTP with 2 µM RelSeq protein in 25 mM Bis-Tris propane pH 9, 100 mM NaCl, 15 mM MgCl₂ binding buffer, using 8 mM ATP as the phosphate donor, at 37°C for 1 h. The RelSeq protein was separated from the radiolabeled pppGpp by filtration on 3 kDa cut-off spin column. To synthesize ³²P-ppGpp, the ³²P-pppGpp was incubated with 1 µM of the phosphatase GppA for 15 min at 37°C. The GppA protein was separated from the radiolabeled ppGpp by filtration on 3 kDa cut-off spin column. Reaction products were visualized by spotting 1 µl on PEI-cellulose F TLC plates (Merck Millipore) and separation in 1.5 M KH₂PO₄, pH 3.6. The radioactive spots were visualized using an LA 7000 Typhoon

PhosphorImager. Unlabeled (p)ppGpp was synthesized in the same way but with the addition of 6 mM GTP instead of the 55.5 nM α-³²P-GTP. Spiking a duplicate reaction with radiolabeled GTP confirmed complete conversion of GTP to (p)ppGpp.

GTP hydrolysis assays. The ability of proteins to hydrolyze GTP to GDP was determined by incubating 10 µM recombinant protein with 2.78 nM α-³²P-GTP in 40 mM Tris pH 7.5, 100 mM NaCl, 10 mM MgCl₂ at 37°C for the indicated times. Ribosomes at a final concentration of 118 nM and increasing concentrations of ppGpp or pppGpp were added to the initial mixture where indicated. The reactions were inactivated with the addition of formic acid to a final concentration of 1.2 M. Precipitated proteins were pelleted by centrifugation at 17,000 x g for 10 min. Reaction products were then visualized by spotting 1 µl on PEI-cellulose F TLC plates (Merck Millipore) followed by separation in 1 M KH₂PO₄, pH 3.6 buffer. The radioactive spots were visualized using an LA 7000 Typhoon PhosphorImager and images quantified using ImageJ.

Enzymatic assays. Gmk and HprT activity assays were performed as previously described and are outlined in the SI Methods (28).

70S ribosome purification. 70S ribosomes were purified as detailed by Daigle and Brown with the following exceptions (51): Ribosomes were purified from 4 L of the *S. aureus* strain LAC* grown in TSB medium. The *S. aureus* culture was grown to an OD₆₀₀ of 0.8 before the addition of 100 µg/ml chloramphenicol. Following a 3 min incubation at 37°C cultures were allowed to cool to 4°C before centrifugation. Cells were suspended in buffer A (20 mM Tris-HCl pH 7.5, 10.5 mM magnesium acetate, 100 mM NH₄Cl, 0.5 mM EDTA, 3 mM 2-mercaptoethanol) and lysed with 0.2 µg/ml lysostaphin and 75 ng/ml DNase for 30 min at 37°C. Lysates were centrifuged at 30,000 x g for 1 h and the protocol continued as per Daigle and Brown (51).

Ribosomal profiles from *S. aureus* cell extracts. Crude isolations of ribosomes from *S. aureus* cell extracts were achieved as described by Uicker *et al* with some modifications (42). Briefly, 150 ml cultures of the different *S. aureus* strains were grown to an OD₆₀₀ of 0.6 in TSB 100 ng/ml Atet. For induction of the stringent response mupirocin was added to cultures 30 min prior to harvesting. Cultures were allowed to cool to 4°C before centrifugation. The cells were suspended in lysis buffer (80 mM Tris-HCl pH 7.8, 7 mM magnesium acetate, 150 mM NH₄Cl and 2.5 mM DTT), normalized to an OD₆₀₀ of 25, lysed by the addition of 0.2 µg/ml lysostaphin and 75 ng/ml DNase and incubated for 30 min at 37°C. The extracts were centrifuged at 17,000 x g for 5 min and subsequently 500 µl were layered onto 10-25% sucrose density gradients in 10 mM Tris-HCl pH 7.8, 10 mM MgCl₂ and 300 mM KCl. Gradients were centrifuged for 3.5 h at 210,000 x g. Gradients were fractionated by upwards displacement of 250 µl aliquots, which were analyzed for RNA content at an absorbance of 260 nm.

Antimicrobial tolerance assay. Overnight cultures of *S. aureus* strains in TSB containing 100 ng/ml Atet were diluted to an OD₆₀₀ of 0.05 and grown until an OD₆₀₀ of 0.4 was reached. 1.5 ml aliquots were then incubated with 20 times the MIC value for vancomycin (40 µg/ml), oxacillin (1.28 mg/ml), penicillin G (20 µg/ml) or ciprofloxacin (320 µg/ml) as previously determined by e-test strips. Aliquots were further incubated at 37°C for the times indicated. CFU counts were determined by removing 500 µl samples, centrifuging and suspending cells in fresh medium. The cells were subsequently serially diluted and plated. % survival was calculated by dividing the number of cfu/ml after antibiotic treatment by the number of cfu/ml prior to addition of the antibiotics.

Footnote. Author contributions: R.M.C. and A.G. designed research; R.M.C., L.E.B., and A.W. performed research; R.M.C., L.E.B., A.W., and A.G. analyzed data; and R.M.C. and A.G. wrote the paper.

Acknowledgements. This research was supported by the European Research Council grant 260371 and the Wellcome Trust grant 100289 to A.G., and a Sir Henry Dale Fellowship jointly funded by the Wellcome Trust and the Royal Society (Grant number 104110/Z/14/Z) to R.M.C..

- Battesti A & Bouveret E (2006) Acyl carrier protein/SpoT interaction, the switch linking SpoT-dependent stress response to fatty acid metabolism. *Mol Microbiol* 62(4):1048-1063.
- Cashel M (1969) The control of ribonucleic acid synthesis in *Escherichia coli*. IV. Relevance of unusual phosphorylated compounds from amino acid-starved stringent strains. *J Biol Chem* 244(12):3133-3141.
- Cashel M, Gentry DR, Hernandez VJ, & Vinella D eds (1996) *The stringent response* (ASM Press, Washington DC), Vol 1, pp 1458-1496.
- Potrykus K & Cashel M (2008) (p)ppGpp: still magical? *Annu Rev Microbiol* 62:35-51.
- Lemos JA, Brown TA, Jr., & Burne RA (2004) Effects of RelA on key virulence properties of planktonic and biofilm populations of *Streptococcus mutans*. *Infect Immun* 72(3):1431-1440.
- Nguyen D, *et al.* (2011) Active starvation responses mediate antibiotic tolerance in biofilms and nutrient-limited bacteria. *Science* 334(6058):982-986.
- Ochi K, Kandala JC, & Freese E (1981) Initiation of *Bacillus subtilis* sporulation by the stringent response to partial amino acid deprivation. *J Biol Chem* 256(13):6866-6875.
- Potrykus K, Murphy H, Philippe N, & Cashel M (2011) ppGpp is the major source of growth rate control in *E. coli*. *Environ Microbiol* 13(3):563-575.
- Maisonneuve E, Castro-Camargo M, & Gerdes K (2013) (p)ppGpp Controls Bacterial Persistence by Stochastic Induction of Toxin-Antitoxin Activity. *Cell* 154(5):1140-1150.
- Avarbock D, Avarbock A, & Rubín H (2000) Differential regulation of opposing RelMtb

activities by the aminoacylation state of a tRNA.ribosome.mRNA.RelMtb complex. *Biochem* 39(38):11640-11648.

- Gropp M, Strausz Y, Gross M, & Glaser G (2001) Regulation of *Escherichia coli* RelA requires oligomerization of the C-terminal domain. *J Bacteriol* 183(2):570-579.
- Haseltine WA & Block R (1973) Synthesis of guanosine tetra- and pentaphosphate requires the presence of a codon-specific, uncharged transfer ribonucleic acid in the acceptor site of ribosomes. *P Natl Acad Sci USA* 70(5):1564-1568.
- Ramagopal S & Davis BD (1974) Localization of the stringent protein of *Escherichia coli* on the 50S ribosomal subunit. *P Natl Acad Sci USA* 71(3):820-824.
- Magnusson LU, Farewell A, & Nyström T (2005) ppGpp: a global regulator in *Escherichia coli*. *Trends Microbiol* 13(5):236-242.
- Buglino J, Shen V, Hakimian P, & Lima CD (2002) Structural and biochemical analysis of the Obg GTP binding protein. *Structure* 10(11):1581-1592.
- Kanjee U, Ogata K, & Houry WA (2012) Direct binding targets of the stringent response alarmone (p)ppGpp. *Mol Microbiol* 85(6):1029-1043.
- Maciag M, Kochanowska M, Lyzen R, Węgrzyn G, & Szalewska-Palasz A (2010) ppGpp inhibits the activity of *Escherichia coli* DnaG primase. *Plasmid* 63(1):61-67.
- Gentry D, Li T, Rosenberg M, & McDevitt D (2000) The *rel* gene is essential for *in vitro* growth of *Staphylococcus aureus*. *J Bacteriol* 182(17):4995-4997.

1089
1090
1091
1092
1093
1094
1095
1096
1097
1098
1099
1100
1101
1102
1103
1104
1105
1106
1107
1108
1109
1110
1111
1112
1113
1114
1115
1116
1117
1118
1119
1120
1121
1122
1123
1124
1125
1126
1127
1128
1129
1130
1131
1132
1133
1134
1135
1136
1137
1138
1139
1140
1141
1142
1143
1144
1145
1146
1147
1148
1149
1150
1151
1152
1153
1154
1155
1156

19. Nanamiya H, et al. (2008) Identification and functional analysis of novel (p)ppGpp synthetase genes in *Bacillus subtilis*. *Mol Microbiol* 67(2):291-304.
20. Geiger T, et al. (2010) Role of the (p)ppGpp synthase RSH, a RelA/SpoT homolog, in stringent response and virulence of *Staphylococcus aureus*. *Infect Immun* 78(5):1873-1883.
21. Geiger T, Kastle B, Gratani FL, Goerke C, & Wolz C (2014) Two small (p)ppGpp synthetases in *Staphylococcus aureus* mediate tolerance against cell envelope stress conditions. *J Bacteriol* 196(4):894-902.
22. Gao W, et al. (2013) The RpoB H481Y rifampicin resistance mutation and an active stringent response reduce virulence and increase resistance to innate immune responses in *Staphylococcus aureus*. *J Infect Dis* 207(6):929-939.
23. Gao W, et al. (2010) Two novel point mutations in clinical *Staphylococcus aureus* reduce linezolid susceptibility and switch on the stringent response to promote persistent infection. *PLoS Pathog* 6(6):e1000944.
24. Geiger T, et al. (2012) The stringent response of *Staphylococcus aureus* and its impact on survival after phagocytosis through the induction of intracellular PSMs expression. *PLoS Pathog* 8(11):e1003016.
25. Mwangi MM, et al. (2013) Whole-genome sequencing reveals a link between beta-lactam resistance and synthetases of the alarmone (p)ppGpp in *Staphylococcus aureus*. *Microb Drug Resist* 19(3):153-159.
26. Krasny L & Gourse RL (2004) An alternative strategy for bacterial ribosome synthesis: *Bacillus subtilis* rRNA transcription regulation. *Embo J* 23(22):4473-4483.
27. Bittner AN, Kriel A, & Wang JD (2014) Lowering GTP level increases survival of amino acid starvation but slows growth rate for *Bacillus subtilis* cells lacking (p)ppGpp. *J Bacteriol* 196(11):2067-2076.
28. Kriel A, et al. (2012) Direct regulation of GTP homeostasis by (p)ppGpp: a critical component of viability and stress resistance. *Mol Cell* 48(2):231-241.
29. Gaca AO, et al. (2013) Basal levels of (p)ppGpp in *Enterococcus faecalis*: the magic beyond the stringent response. *MBio* 4(5):e00646-00613.
30. Liu KO, et al. (2015) Molecular Mechanism and Evolution of Guanylate Kinase Regulation by (p)ppGpp. *Mol Cell* 57(4):735-749.
31. Handke LD, Shivers RP, & Sonenshein AL (2008) Interaction of *Bacillus subtilis* CodY with GTP. *J Bacteriol* 190(3):798-806.
32. Corrigan RM, et al. (2013) Systematic identification of conserved bacterial c-di-AMP receptor proteins. *P Natl Acad Sci USA* 110(22):9084-9089.
33. Roelofs KG, Wang J, Sintim HO, & Lee VT (2011) Differential radial capillary action of ligand assay for high-throughput detection of protein-metabolite interactions. *P Natl Acad Sci USA* 108(37):15528-15533.
34. Campbell TL, Henderson J, Heinrichs DE, & Brown ED (2006) The *yjeQ* gene is required for virulence of *Staphylococcus aureus*. *Infect Immun* 74(8):4918-4921.
35. Campbell TL, Daigle DM, & Brown ED (2005) Characterization of the *Bacillus subtilis* GTPase YloQ and its role in ribosome function. *Biochem J* 389:843-852.
36. Himeno H, et al. (2004) A novel GTPase activated by the small subunit of ribosome. *Nucleic Acids Res* 32(17):5303-5309.
37. Anderson PE, Matsunaga J, Simons EL, & Simons RW (1996) Structure and regulation of the *Salmonella typhimurium* rnc-era-recO operon. *Biochimie* 78(11-12):1025-1034.
38. Gollop N & March PE (1991) A GTP-binding protein (Era) has an essential role in growth rate and cell cycle control in *Escherichia coli*. *J Bacteriol* 173(7):2265-2270.
39. March PE, Lerner CG, Ahnn J, Cui X, & Inouye M (1988) The *Escherichia coli* Ras-like protein (Era) has GTPase activity and is essential for cell growth. *Oncogene* 2(6):539-544.
40. Gulati M, Jain N, Anand B, Prakash B, & Britton RA (2013) Mutational analysis of the ribosome assembly GTPase RbgA provides insight into ribosome interaction and ribosome-stimulated GTPase activation. *Nucleic Acids Research* 41(5):3217-3227.
41. Morimoto T, et al. (2002) Six GTP-binding proteins of the Era/Obg family are essential for cell growth in *Bacillus subtilis*. *Microbiol-Sgm* 148:3539-3552.
42. Uicker WC, Schaefer L, & Britton RA (2006) The essential GTPase RbgA (YlqF) is required for 50S ribosome assembly in *Bacillus subtilis*. *Mol Microbiol* 59(2):528-540.
43. Sayed A, Matsuyama S, & Inouye M (1999) Era, an essential *Escherichia coli* small G-protein, binds to the 30S ribosomal subunit. *Biochem Biophys Res Commun* 264(1):51-54.
44. Sharma MR, et al. (2005) Interaction of Era with the 30S ribosomal subunit implications for 30S subunit assembly. *Mol Cell* 18(3):319-329.
45. Jomaa A, et al. (2011) Understanding ribosome assembly: the structure of *in vivo* assembled immature 30S subunits revealed by cryo-electron microscopy. *Rna* 17(4):697-709.
46. Hase Y, Yokoyama S, Muto A, & Himeno H (2009) Removal of a ribosome small subunit-dependent GTPase confers salt resistance on *Escherichia coli* cells. *Rna* 15(9):1766-1774.
47. Gulati M, et al. (2014) Functional interaction between ribosomal protein L6 and RbgA during ribosome assembly. *PLoS Genet* 10(10):e1004694.
48. Matsuo Y, et al. (2006) The GTP-binding protein YlqF participates in the late step of 50 S ribosomal subunit assembly in *Bacillus subtilis*. *J Biol Chem* 281(12):8110-8117.
49. Jain N, et al. (2009) *E. coli* HflX interacts with 50S ribosomal subunits in presence of nucleotides. *Biochem Biophys Res Co* 379(2):201-205.
50. Zhang Y, et al. (2015) HflX is a ribosome-splitting factor rescuing stalled ribosomes under stress conditions. *Nat Struct Mol Biol*.
51. Daigle DM & Brown ED (2004) Studies of the interaction of *Escherichia coli* YjeQ with the ribosome *in vitro*. *J Bacteriol* 186(5):1381-1387.
52. Cashel M (1975) Regulation of Bacterial ppGpp and pppGpp. *Annu Rev Microbiol* 29:301-318.
53. Kästle B, et al. (2015) rRNA regulation during growth and under stringent conditions in *Staphylococcus aureus*. *Environ Microbiol* 17(11):4394-4405.
54. Balaban NQ, Merrin J, Chait R, Kowalik L, & Leibler S (2004) Bacterial persistence as a phenotypic switch. *Science* 305(5690):1622-1625.
55. Levin BR & Rozen DE (2006) Opinion - Non-inherited antibiotic resistance. *Nat Rev Microbiol* 4(7):556-562.
56. Feng B, et al. (2014) Structural and functional insights into the mode of action of a universally conserved Obg GTPase. *PLoS Biol* 12(5):e1001866.
57. Rojas AM, Ehrenberg M, Andersson SG, & Kurland CG (1984) ppGpp inhibition of elongation factors Tu, G and Ts during polypeptide synthesis. *Mol Gen Genet* 197(1):36-45.
58. Miller DL, Cashel M, & Weissbach H (1973) The interaction of guanosine 5'-diphosphate, 2' (3')-diphosphate with the bacterial elongation factor Tu. *Arch Biochem Biophys* 154(2):675-682.
59. Legault L, Jeantet C, & Gros F (1972) Inhibition of *in vitro* protein synthesis by ppGpp. *FEBS Lett* 27(1):71-75.
60. Foti JJ, Schienda J, Sutera VA, Jr., & Lovett ST (2005) A bacterial G protein-mediated response to replication arrest. *Mol Cell* 17(4):549-560.
61. Wout P, et al. (2004) The *Escherichia coli* GTPase CgtAE cofractionates with the 50S ribosomal subunit and interacts with SpoT, a ppGpp synthetase/hydrolase. *J Bacteriol* 186(16):5249-5257.
62. Paul BJ, et al. (2004) DksA: a critical component of the transcription initiation machinery that potentiates the regulation of rRNA promoters by ppGpp and the initiating NTP. *Cell* 118(3):311-322.
63. Ross W, Vrentas CE, Sanchez-Vazquez P, Gaal T, & Gourse RL (2013) The magic spot: a ppGpp binding site on *E. coli* RNA polymerase responsible for regulation of transcription initiation. *Mol Cell* 50(3):420-429.
64. Achila D, Gulati M, Jain N, & Britton RA (2012) Biochemical characterization of ribosome assembly GTPase RbgA in *Bacillus subtilis*. *J Biol Chem* 287(11):8417-8423.
65. Merlie JP & Pizer LI (1973) Regulation of phospholipid synthesis in *Escherichia coli* by guanosine tetraphosphate. *J Bacteriol* 116(1):355-366.
66. Wang JD, Sanders GM, & Grossman AD (2007) Nutritional control of elongation of DNA replication by (p)ppGpp. *Cell* 128(5):865-875.
67. Gründling A & Schneewind O (2007a) Genes Required for Glycolipid Synthesis and Lipoteichoic Acid Anchoring in *Staphylococcus aureus*. *J Bacteriol* 189(6):2521-2530.
68. Corrigan RM, Abbott JC, Burhenne H, Kaever V, & Gründling A (2011) c-di-AMP is a new second messenger in *Staphylococcus aureus* with a role in controlling cell size and envelope stress. *PLoS Pathog* 7(9):e1002217.
69. Lu D, et al. (2009) Structure-based mechanism of lipoteichoic acid synthesis by *Staphylococcus aureus* LtaS. *P Natl Acad Sci USA* 106(5):1584-1589.

1157
1158
1159
1160
1161
1162
1163
1164
1165
1166
1167
1168
1169
1170
1171
1172
1173
1174
1175
1176
1177
1178
1179
1180
1181
1182
1183
1184
1185
1186
1187
1188
1189
1190
1191
1192
1193
1194
1195
1196
1197
1198
1199
1200
1201
1202
1203
1204
1205
1206
1207
1208
1209
1210
1211
1212
1213
1214
1215
1216
1217
1218
1219
1220
1221
1222
1223
1224