



UNIVERSITY OF LEEDS

This is a repository copy of *Serial block face SEM and TEM imaging for quantitative measurement of cellular uptake of semiconductor quantum dot nanoparticles*.

White Rose Research Online URL for this paper:
<http://eprints.whiterose.ac.uk/93516/>

Version: Accepted Version

Proceedings Paper:

Hondow, NS, Brown, MR, Starborg, T et al. (5 more authors) (2015) Serial block face SEM and TEM imaging for quantitative measurement of cellular uptake of semiconductor quantum dot nanoparticles. In: *Microscopy and Microanalysis*. Microscopy and Microanalysis, 02-06 Aug 2015, Portland, OR. Cambridge University Press , pp. 1553-1554.

<https://doi.org/10.1017/S143192761500854>

Reuse

Items deposited in White Rose Research Online are protected by copyright, with all rights reserved unless indicated otherwise. They may be downloaded and/or printed for private study, or other acts as permitted by national copyright laws. The publisher or other rights holders may allow further reproduction and re-use of the full text version. This is indicated by the licence information on the White Rose Research Online record for the item.

Takedown

If you consider content in White Rose Research Online to be in breach of UK law, please notify us by emailing eprints@whiterose.ac.uk including the URL of the record and the reason for the withdrawal request.



eprints@whiterose.ac.uk
<https://eprints.whiterose.ac.uk/>

Serial block face SEM and TEM imaging for quantitative measurement of cellular uptake of semiconductor quantum dot nanoparticles

Nicole Hondow¹, M. Rowan Brown², Tobias Starborg³, Alexander G. Montieth⁴, Rik Brydson¹, Huw D. Summers², Paul Rees² and Andy Brown¹

¹ Institute for Materials Research, School of Chemical and Process Engineering, University of Leeds, Leeds LS2 9JT, UK.

² Centre for Nanohealth, College of Engineering, Swansea University, Singleton Park, Swansea SA2 8PP, UK.

³ Wellcome Centre for Cell Matrix Research, University of Manchester, Manchester M13 9PT, UK.

⁴ Gatan UK, 25 Nuffield Way, Abingdon OX14 1RL, UK.

There are an increasing number of potential applications for nanoparticles in clinical medicine, including targeted drug delivery and contrast agents for biomedical imaging, which promise faster, less invasive and more precise treatments than those currently available [1]. Current in vitro studies are concerned with the biological impact of nanoparticles, with electron microscopy commonly employed to image the intracellular location. It is critical to quantify the absolute nanoparticle dose received in a given exposure, and to understand the factors which affect this. This is difficult, with the complex and varied mechanisms of nanoparticle interactions with cells.

Our aim is to develop a full quantitative description of nanoparticle uptake by an in vitro cell line. Imaging flow cytometry is a high-throughput, low-resolution technique useful for measuring the cellular uptake of fluorescent nanoparticles [2], but it cannot measure the dose in terms of a number of particles. TEM of thin cell sections has the required spatial resolution to provide the location and number of cellular vesicles per 2-D cell slice plus the number of nanoparticles per vesicle [3,4]. However this is limited by both the nature of the 2-D thin section, with only a small amount of the cell analyzed, and the time-intensive nature of TEM imaging.

Serial sectioning can provide information across a whole cell, and the increased use of serial block face scanning electron microscopy (SBF SEM) opens avenues to analysis of much larger volumes without the labour- and time-intensive nature of examining serial sections in the TEM [5]. The reduced resolution of SBF SEM as compared to TEM limits examination to nanoparticle filled endosomes rather than individual nanoparticles, but the size, shape and location of these endosomes can be quantified in whole cell volumes.

We will show results from studies where commercially available Qtracker 705 quantum dot nanoparticles were loaded into human osteosarcoma (U-2 OS) cells and at certain time points were fixed and resin-embedded for quantitative electron microscopy analysis [3,4]. The same resin-embedded sample was used for both the production of the TEM thin sections and for SBF SEM. No post-fixation heavy metal staining was required for either analysis as the electron-dense quantum dots are easily identifiable from the cellular features which are still visible due to staining by the osmium fixative. SBF SEM analysis using a Gatan 3-View system allowed collection of a data set containing 3-D information from numerous cells.

SBF SEM data has been used to correlate higher resolution 2-D TEM data to high throughput, low resolution optical imaging of quantum dot nanoparticle loaded cells [3]. After 1 hour of exposure to Qtracker 705 quantum dots, internalized nanoparticles can be identified in both TEM and SBF SEM. The location of quantum dot endosomes can be identified in SBF SEM, and it was found that they are distributed evenly throughout the cell after the short exposure time. This indicates that any one thin section of a cell is potentially representative of the whole cell, allowing for conversion of the quantitative 2-D TEM data to 3-D. This results in the determination of a calibration factor to transform flow cytometry fluorescence intensity data to a nanoparticle dose distribution, in terms of the fundamental unit, the number of nanoparticles internalized per cell [3]. We will also show how the distribution of the endosomal load within cells develops over a further 24 hour period [4].

References:

- [1] TL Doane and C Burda, *Chem. Soc. Rev.* **41** (2012), p.2885.
- [2] HD Summers, P Rees, MD Holton, MR Brown, SC Chappell, PJ Smith and RJ Errington, *Nat. Nano.* **6** (2011), p. 170.
- [3] HD Summers, MR Brown, MD Holton, JA Tonkin, N Hondow, AP Brown, R Brydson and P Rees, *ACS Nano* **7** (2013), p. 6129.
- [4] N Hondow, MR Brown, T Starborg, AG Montieth, R Brydson, HD Summers, P Rees and A Brown, *J. Microsc.* Accepted (2015).
- [5] W Denk and H Horstmann, *PLoS Biol* **2** (2004), p. e329.

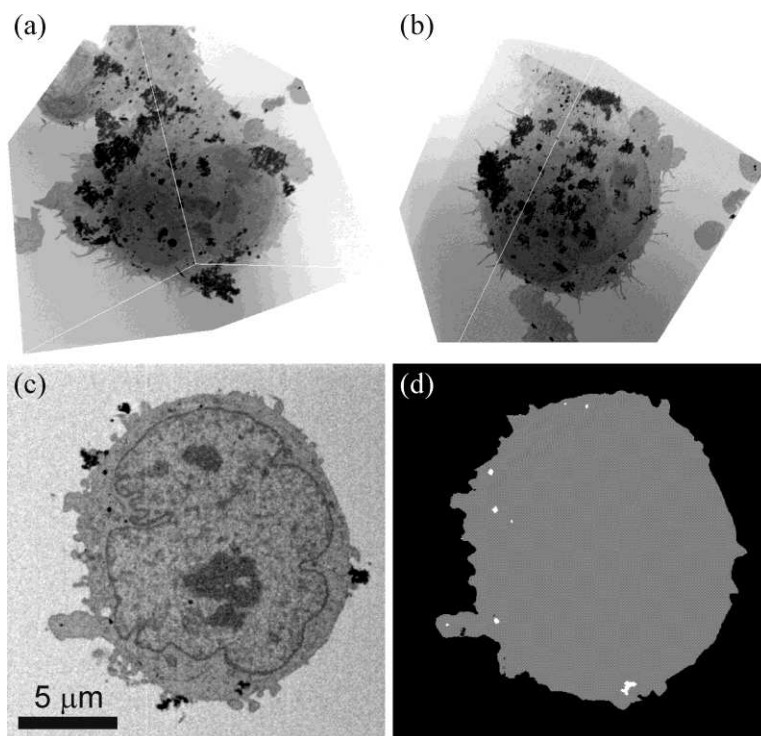


Figure 1. SBF SEM of a U-2 OS cell exposed to Qtracker 705 quantum dots. (a) and (b) Stills from a reconstruction of a cell, (c) contrast inverted SBF SEM image and (d) segmented version of (c).