



UNIVERSITY OF LEEDS

This is a repository copy of *The cost-effectiveness of Docetaxel and active symptom control versus active symptom control alone for refractory oesophagogastric adenocarcinoma: Economic analysis of the COUGAR-02 trial.*

White Rose Research Online URL for this paper:
<http://eprints.whiterose.ac.uk/89992/>

Version: Accepted Version

Article:

Meads, DM, Marshall, A, Hulme, CT et al. (2 more authors) (2016) The cost-effectiveness of Docetaxel and active symptom control versus active symptom control alone for refractory oesophagogastric adenocarcinoma: Economic analysis of the COUGAR-02 trial. *PharmacoEconomics*, 34 (1). pp. 33-42. ISSN 1170-7690

<https://doi.org/10.1007/s40273-015-0324-5>

Reuse

Unless indicated otherwise, fulltext items are protected by copyright with all rights reserved. The copyright exception in section 29 of the Copyright, Designs and Patents Act 1988 allows the making of a single copy solely for the purpose of non-commercial research or private study within the limits of fair dealing. The publisher or other rights-holder may allow further reproduction and re-use of this version - refer to the White Rose Research Online record for this item. Where records identify the publisher as the copyright holder, users can verify any specific terms of use on the publisher's website.

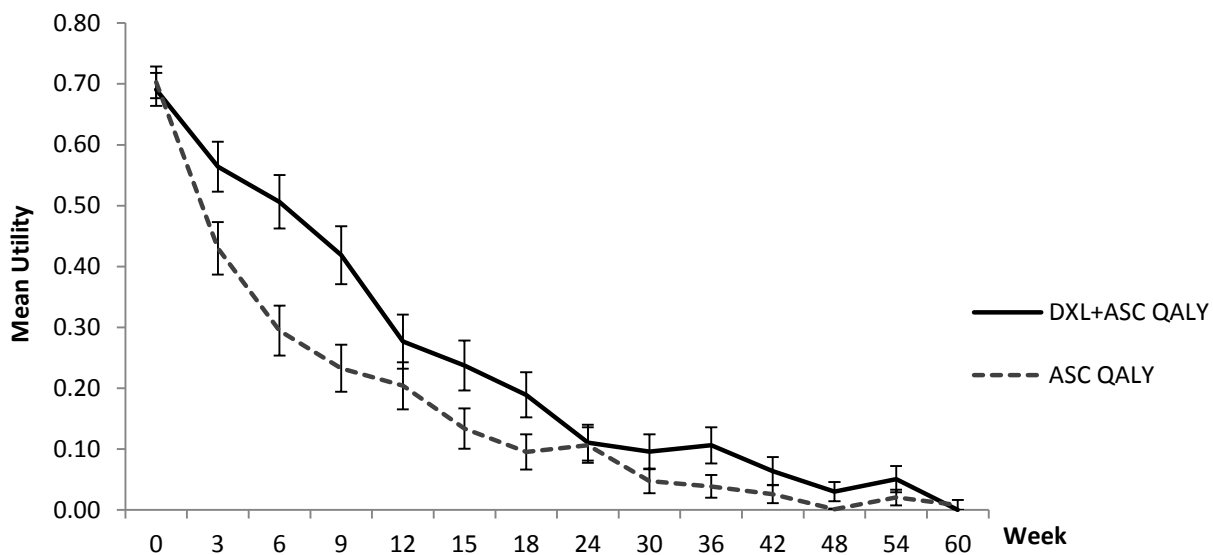
Takedown

If you consider content in White Rose Research Online to be in breach of UK law, please notify us by emailing eprints@whiterose.ac.uk including the URL of the record and the reason for the withdrawal request.



eprints@whiterose.ac.uk
<https://eprints.whiterose.ac.uk/>

Figure 1: Average QALYs (bars are standard errors)



N EQ-5D values*

DXL	8079	63	52	44	31	25	22	15	13	13	8	4	6	0
ASC	738	49	37	27	23	17	11	12	8	5	4	1	3	1

* [Completions after week 60 were included in the analyses but not in the figure as timings beyond this point were not consistent across arms and mean calculation was not appropriate](#)

Figure 2: Cost-effectiveness plane

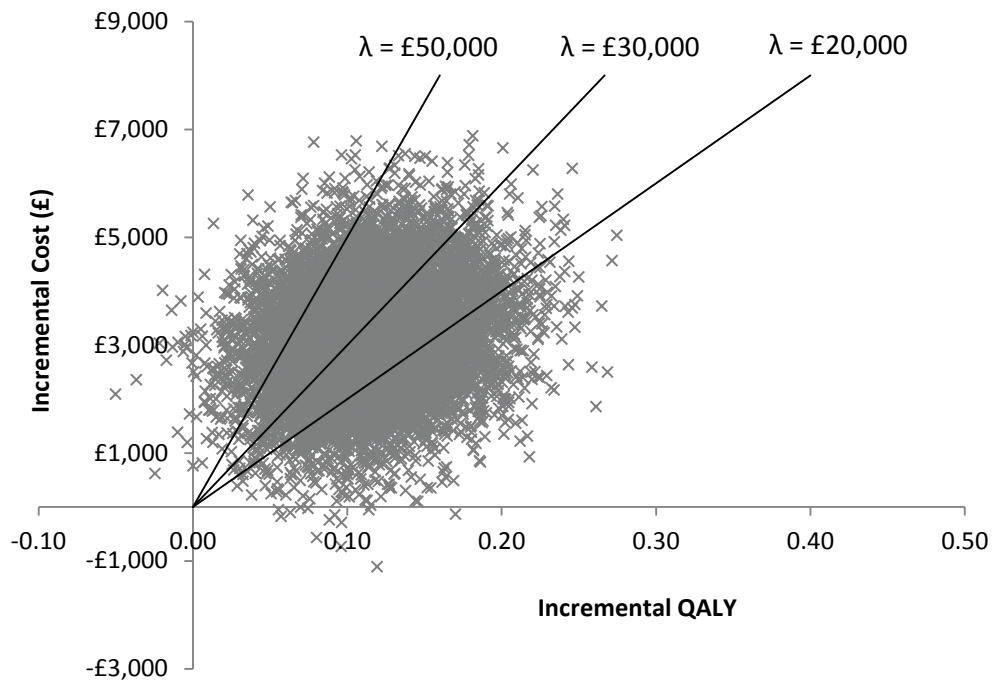


Figure 3: Cost-effectiveness acceptability curve

