



**UNIVERSITY OF LEEDS**

This is a repository copy of *Symbiotic options for the conquest of land*.

White Rose Research Online URL for this paper:

<http://eprints.whiterose.ac.uk/89158/>

Version: Supplemental Material

---

**Article:**

Field, KJ, Pressel, S, Duckett, JG et al. (2 more authors) (2015) Symbiotic options for the conquest of land. *Trends in Ecology and Evolution*, 30 (8). 477 - 486. ISSN 0169-5347

<https://doi.org/10.1016/j.tree.2015.05.007>

---

**Reuse**

Unless indicated otherwise, fulltext items are protected by copyright with all rights reserved. The copyright exception in section 29 of the Copyright, Designs and Patents Act 1988 allows the making of a single copy solely for the purpose of non-commercial research or private study within the limits of fair dealing. The publisher or other rights-holder may allow further reproduction and re-use of this version - refer to the White Rose Research Online record for this item. Where records identify the publisher as the copyright holder, users can verify any specific terms of use on the publisher's website.

**Takedown**

If you consider content in White Rose Research Online to be in breach of UK law, please notify us by emailing [eprints@whiterose.ac.uk](mailto:eprints@whiterose.ac.uk) including the URL of the record and the reason for the withdrawal request.



[eprints@whiterose.ac.uk](mailto:eprints@whiterose.ac.uk)  
<https://eprints.whiterose.ac.uk/>

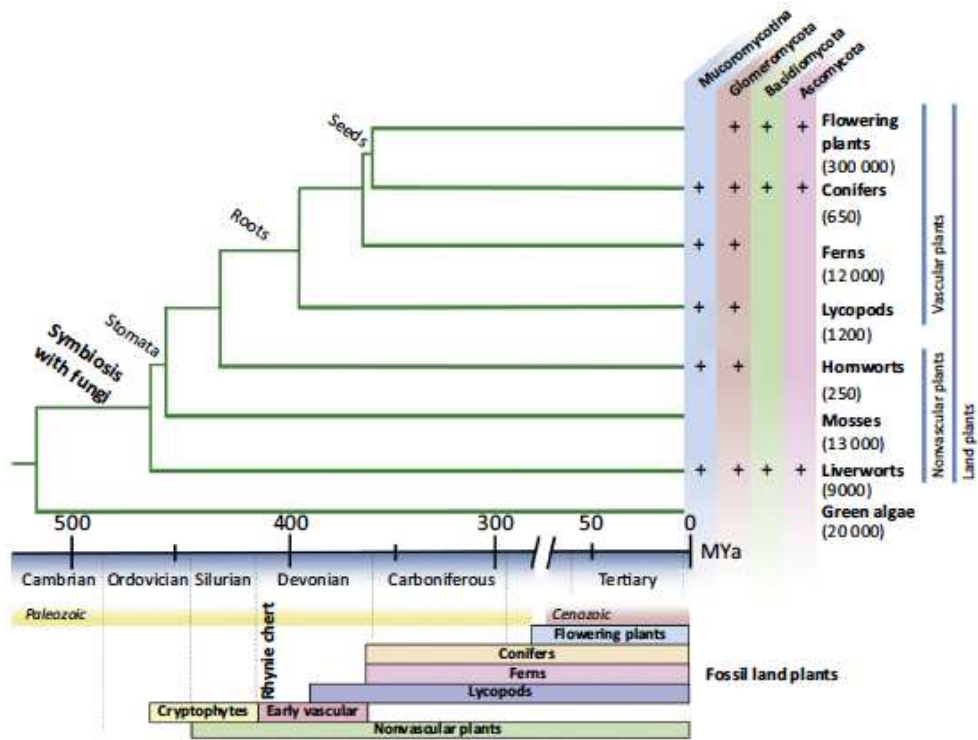


Figure 1

<b>Atmosphere:</b>	4500 ppm CO <sub>2</sub>	4500 ppm CO <sub>2</sub>	3000 ppm CO <sub>2</sub>	350 ppm CO <sub>2</sub>
<b>Substrate:</b>	Brackish water	Moist, mineral soil	Mineral and organic soil	Mineral and organic soil
<b>Water and nutrient uptake:</b>	Direct	Direct	Direct and symbiotic	Direct and symbiotic
<b>Specialized structures:</b>	Rhizoids	Rhizoids	Rhizoids, rhizomes and fungal symbionts	Roots, root hairs and fungal symbionts

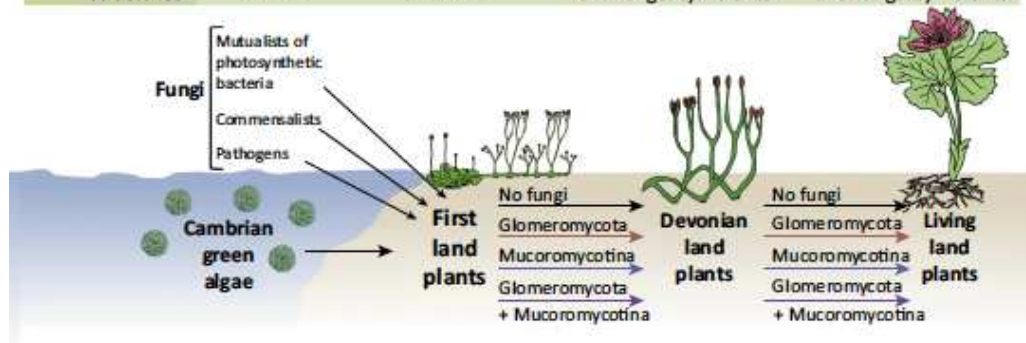
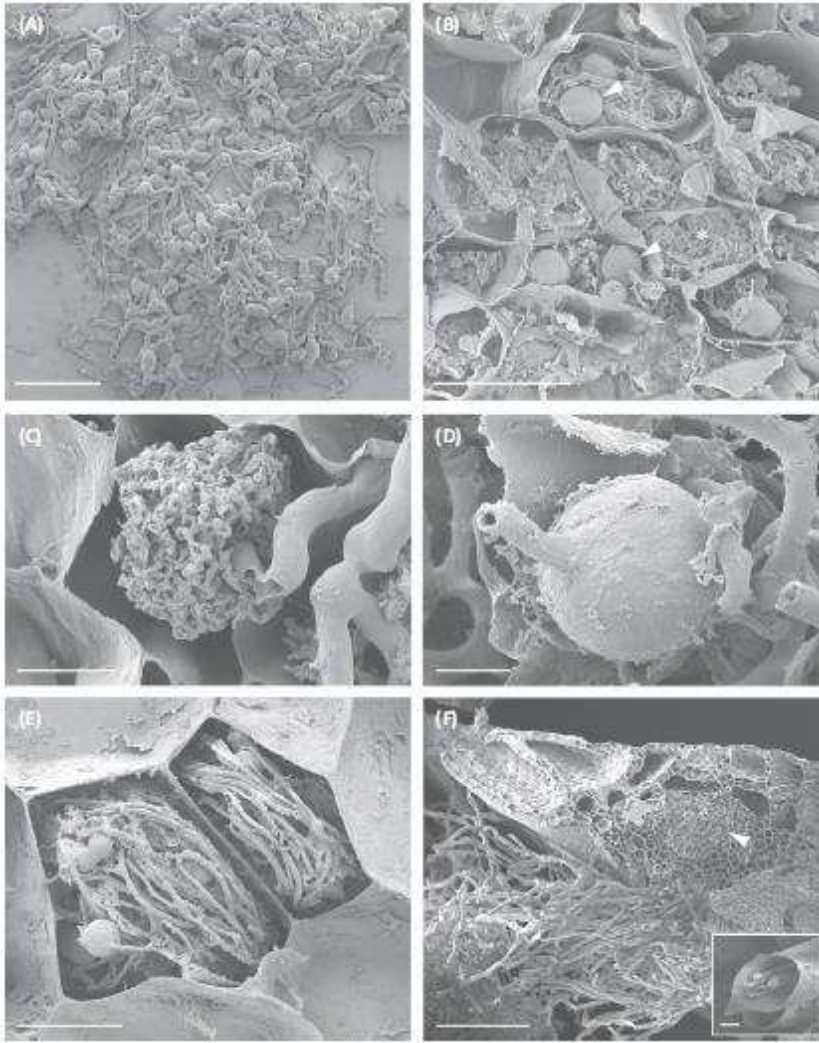
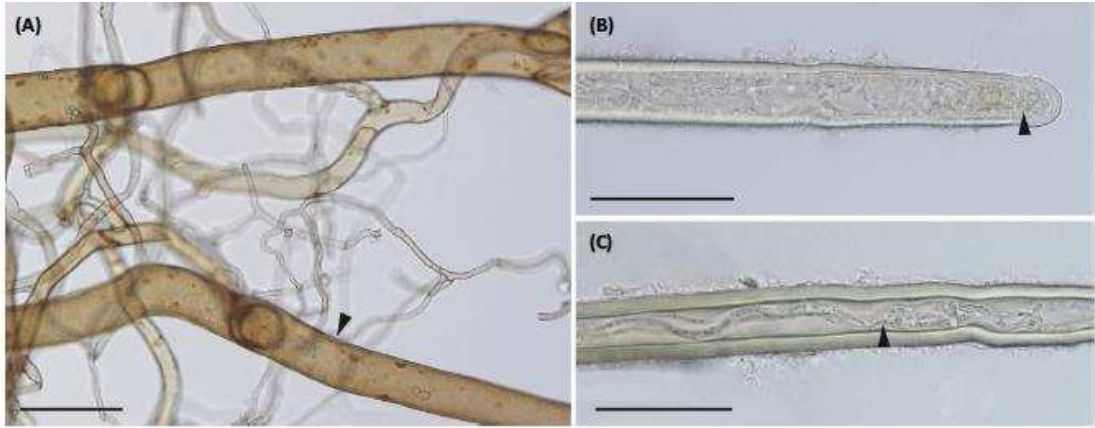


Figure 2



**Figure 3**



**Box 2 figure**