



Deposited via The University of Leeds.

White Rose Research Online URL for this paper:

<https://eprints.whiterose.ac.uk/id/eprint/87336/>

Version: Accepted Version

Article:

Gravendeel, B, Protopopov, A, Bull, I et al. (2014) Multiproxy study of the last meal of a mid-Holocene Oyogos Yar horse, Sakha Republic, Russia. *The Holocene*, 24 (10). 1288 - 1296. ISSN: 0959-6836

<https://doi.org/10.1177/0959683614540953>

Reuse

Items deposited in White Rose Research Online are protected by copyright, with all rights reserved unless indicated otherwise. They may be downloaded and/or printed for private study, or other acts as permitted by national copyright laws. The publisher or other rights holders may allow further reproduction and re-use of the full text version. This is indicated by the licence information on the White Rose Research Online record for the item.

Takedown

If you consider content in White Rose Research Online to be in breach of UK law, please notify us by emailing eprints@whiterose.ac.uk including the URL of the record and the reason for the withdrawal request.

Multiproxy study of the last meal of a mid-Holocene Yakutian horse

Journal:	<i>The Holocene</i>
Manuscript ID:	HOL-13-0195
Manuscript Type:	Paper
Date Submitted by the Author:	16-Dec-2013
Complete List of Authors:	van Geel, Bas; IBED-UvA, Paleoecology; Protopopov, Albert; Academy of Science, Bull, Ian; University of Bristol, School of Chemistry Duijm, Elza; Naturalis Biodiversity Center, Gill, Fiona; University of Leeds, School of Earth and Environment Nieman, Aline; Naturalis Biodiversity Center, Rudaya, Natalia; Institute of Archaeology and Ethnography, Centre of Cenozoic Geochronology Tikhonov, Alexei; Russian Academy of Sciences, Zoological Institute Trofimova, Svetlana; Ural Branch Russian Academy of Sciences, Laboratory for Paleoecology van Reenen, Guido; IBED-UvA, Paleoecology Vos, Rutger; Naturalis Biodiversity Center, Zhilich, Snezhana; Institute of Archaeology and Ethnography, Centre of Cenozoic Geochronology Gravendeel, Barbara; Naturalis Biodiversity Center,
Keywords:	Yakutia, mid-Holocene, horse, last meal, ancient DNA, lipids, pollen and spores, microfossils
Abstract:	The last meal of a horse that lived in northern Yakutia ca 5400 years ago was studied using pollen, spores, botanical macroremains, lipid composition and ancient DNA in order to reconstruct its components. Pollen of Poaceae was superabundant, but this may be due to over-representation as a consequence of grazed inflorescences of grasses. We evaluate the palaeo-environmental indicator value of the different methods applied. Botanical microfossils and chemical data show what the animal had eaten. Pollen grains and the aDNA record also give information about taxa that occurred elsewhere in the landscape. The combined data point to an open landscape with a limited amount of Birch and Alder shrubs and support the hypothesis that horses changed their diet from browsing to grazing concurrent with the spread of savanna and steppe grasslands.

1
2
3
4
5
6
7
8
9
10
11
12
13
14
15
16
17
18
19
20
21
22
23
24
25
26
27
28
29
30
31
32
33
34
35
36
37
38
39
40
41
42
43
44
45
46
47
48
49
50
51
52
53
54
55
56
57
58
59
60

SCHOLARONE™
Manuscripts

For Peer Review

Multiproxy study of the last meal of a mid-Holocene Yakutian horse

Bas van Geel¹, Albert Protopopov², Ian Bull³, Elza Duijm⁴, Fiona Gill⁵, Aline Nieman⁴, Natalia Rudaya⁶, Alexei N. Tikhonov⁷, Svetlana Trofimova⁸, Guido B.A. van Reenen¹, Rutger Vos⁴, Snezhana Zhilich⁶ and Barbara Gravendeel⁴

¹Institute for Biodiversity and Ecosystem Dynamics, University of Amsterdam, Science Park 904, 1098 XH Amsterdam, The Netherlands b.vangeel@uva.nl

²Academy of Science, 33 Lenin avenue, Yakutsk 677007, Russia

³Organic Geochemistry Unit, Biogeochemistry Research Centre, School of Chemistry, University of Bristol, Bristol BS8 1TS, United Kingdom

⁴Naturalis Biodiversity Center, Sylviusweg 72, 2333 BE, Leiden, The Netherlands

⁵School of Earth and Environment, University of Leeds, West Yorkshire LS2 9JT, Leeds, United Kingdom

⁶Centre of Cenozoic Geochronology, Institute of Archaeology and Ethnography, Siberian Branch of Russian Academy of Sciences, Ac. Lavrentiev Ave. 17, Novosibirsk 630090, Russia

⁷Zoological Institute, Russian Academy of Sciences, Saint Petersburg, 199034, Russia

⁸Laboratory for Paleoecology, Institute of Plant and Animal Ecology, Ural Branch Russian Academy of Sciences, 8th of March Str. 202, Ekaterinburg, 620144, Russia

Abstract

The last meal of a horse that lived in northern Yakutia ca 5400 years ago was studied using pollen, spores, botanical macroremains, lipid composition and ancient DNA in order to reconstruct its components. Pollen of Poaceae was superabundant, but this may be due to over-representation as a consequence of grazed inflorescences of grasses. We evaluate the palaeo-environmental indicator value of the different methods applied. Botanical macrofossils and chemical data show what the animal had eaten. Pollen grains and the aDNA record also give information about taxa that occurred elsewhere in the landscape. The combined data point to an open landscape with a limited amount of Birch and Alder shrubs and support the hypothesis that horses changed their diet from browsing to grazing concurrent with the spread of savanna and steppe grasslands.

Introduction

The Equidae are considered one of the prime examples for studying mammalian evolution due to their excellent fossil record. Their major adaptive radiation occurred during the early Miocene. Significant changes in dental morphology from low-crowned to high-crowned teeth occurred together with major changes in spreads of grasslands requiring a change in diet from predominantly browsing on woody plants to grazing on grasses and sedges. However, little evidence has yet been available to test this hypothesis (Wang et al. 1994). The contents of the stomach and intestines of frozen animals are an important source of information about the food choice of animals and the palaeo-environment where these animals were living (Ukrainitseva 1979, 1993; van Geel et al., 2008, 2011a,b; Guthrie, 1990; Lazarev, 2008). In 2010 a frozen horse (Fig. 1a,b) was found in the area caled Oyogosky Yar, in the Ust-Yana region of Yakutia ($72^{\circ} 40'49.42''N$, $142^{\circ} 50'38.33''E$; Boeskorov et al. 2013). The Yukagir horse was radiocarbon dated 4630 ± 35 BP (GrA-54020). After calibration (<http://www.calpal-online.de/>) this date corresponds to a period between ca. 5442 and 5326 calendar years BP. Oyagosky Yar is one of the richest areas for Quaternary fossils in northern Yakutia. It is located on the mainland coast of the Dmitri Laptev Strait and stretches more than 100 km, from Cape Saint Nose (Svyatoi Nos) in the west to the mouth of the Kondratieva River in the east. The Edoma deposits of the Oyagosky Yar's northern slope reach up to 40-50 m above sea level. The icy deposits in the area include the entire second half of the Pleistocene. The western part of Oyagosky Yar is composed of lake-alluvial silt sediments reaching 5-7 m a.s.l., which are contemporary with the sediments of the Olersky Formation (Lower Kolyma River basin, Lower Pleistocene). The partial

1
2
3 carcass represents the remains of an adult female horse about 5 years old. The frozen
4
5 corpse is represented by the well-preserved head with neck (detached from the body),
6
7 and the hind part of the body with hind legs and tail and internal organs in the
8
9 abdominal cavity. The front legs are missing. Body measurements showed that the
10
11 height of the horse in the hind quarters was about 130 cm. Thus, the new finding
12
13 relates to the “undersized” horses, similar to the Lena horse (*Equus lenensis* Russ.),
14
15 which inhabited Eastern Siberia and became extinct in the Holocene. The scarcity of
16
17 mummified horse remains determines the high scientific and museum value of the
18
19 new discovery.
20
21
22

23
24 We sampled and studied material from the Yukagir horse colon in order to reconstruct
25
26 the species composition of its last meal and the palaeovegetation in the area where the
27
28 animal was living, in order to test the hypothesis that horses shifted their diet during
29
30 evolution to become predominant grazers. The colon contents were subsampled to
31
32 provide separate aliquots of material for each analytical procedure. We followed a
33
34 multi-proxy approach, including the analysis of microfossils (pollen, spores),
35
36 macroremains (including epidermis and moss remains), chemistry and ancient plant
37
38 DNA.
39
40
41

42 **Methods**

43 *Microfossils and macroremains*

44
45
46 The preparation of a subsample for the study of microfossils in Russia was as follows:
47
48
49 After thawing the sample was sieved through a sieve with a mesh of 250 μm to
50
51 remove large particles. Subsequently the material was treated with 10% hydrochloric
52
53 acid and 10% potassium hydroxide, and then washed with distilled water and
54
55 centrifuged. After sieving (meshes of 7 μm), the material on the sieve was put in a
56
57
58
59
60

1
2
3 tube and glycerin was added. The microfossil analysis was conducted with 400x
4
5 magnification. The preparation of a subsample for microfossil analysis in the
6
7 Netherlands was according to Faegri and Iversen (1989) and Moore et al. (1991), but
8
9 without HF treatment, and the analysis was worked out with 400x and 1000x
10
11 magnifications. Identifications of microfossils are based on Moore et al. (1991), Beug
12
13 (2004) and a pollen reference collection. The identification of fungi was based on van
14
15 Geel and Aptroot (2006) and Cugny et al. (2010). Macrofossils were prepared
16
17 according to Mauquoy and van Geel (2007). Mosses were identified using Landwehr
18
19 (1984), Lawton (1971), Nyholm (1968), Smith (1978), Siebel and During (2006), The
20
21 Plant List (2012), and Touw and Rubers (1989).
22
23

24 25 26 *Lipids* 27

28
29 Lipids were extracted from freeze-dried, ground colon contents using the
30
31 methodology of McCartney et al. (2013) to optimize recovery of the dialkyl glycerol
32
33 ether archaeol (2,3-di-O-phytanyl-*sn*-glycerol) if present. Briefly, 6.92 µg of internal
34
35 standard, 1,2-di-*O-rac*-hexadecyl glycerol (Santa Cruz Biotechnology Inc., CA), was
36
37 added to each sample before lipid extraction and the total lipid extract was obtained
38
39 using an extraction procedure modified from Bligh and Dyer (1959). Acid
40
41 methanolysis was used to cleave polar head groups from archaeol. Silica column
42
43 chromatography was used to separate the total lipid extract into an apolar fraction and
44
45 a fraction containing predominantly hydroxyl group-bearing components. For this
46
47 latter fraction, analytes were derivatised to their respective trimethylsilyl (TMS)
48
49 ethers by adding 50 µl of *N,O*-bis(trimethylsilyl)trifluoroacetamide (BSTFA)
50
51 containing 1% trimethylchlorosilane (TMCS), and 50 µl pyridine to the sample and
52
53 heating at 70 °C for 1 h. Samples were dissolved in ethyl acetate prior to analysis by
54
55 gas chromatography/mass spectrometry (GC/MS).
56
57
58
59
60

1
2
3 GC/MS was conducted using a Trace 1300 GC coupled to an ISQ MS (Thermo
4 Scientific, Hemel Hempstead, UK), equipped with a non-polar fused silica capillary
5 column (CPSil-5CB, 50 m x 0.32 mm x 0.12 mm, Agilent J&W). The following
6
7 temperature program was used: initial temperature 40 °C, rising to 130°C at 20°C min
8
9 ⁻¹, then rising to 300°C at 4°C min ⁻¹, holding at 300°C for 25 min. The ion source
10
11 was maintained at 300 °C and the transfer line at 300 °C. The emission current was
12
13 set to 50 µA and the electron energy to 70 eV. The analyzer was set to scan *m/z* 50-
14
15 650 with a scan cycle time of 0.6s.
16
17
18
19

20 21 DNA extraction

22
23
24 The outer layer of the samples was carefully removed with a scalpel to prevent
25
26 contaminants in the extractions. Each sample was ground to fine powder in liquid
27
28 nitrogen with a mortar and pestle. Ca. 100 mg was used for a CTAB extraction (Doyle
29
30 and Doyle, 1987). A freshly prepared CTAB buffer (2% CTAB, 2% PVP, 20 mM
31
32 EDTA, 100 mM Tris-HCl, pH 8.0, 1.42 M NaCl, 2% 2-mercaptoethanol) was added
33
34 to the ground samples before incubation for 1 hour at 65 °C under agitation. DNA
35
36 was subsequently extracted using chloroform:isoamyl alcohol (24:1), precipitated
37
38 with ice-cold isopropyl alcohol and re-suspended in 1×TE buffer. The suspension was
39
40 then re-precipitated with NH₄ acetate and pure ethanol at -20 °C for 30 minutes,
41
42 washed twice in 76% ethanol 10 mM NH₄ acetate and the resulting pellet was air
43
44 dried and re-suspended in 1×TE buffer. Subsequently, aliquots of each extraction
45
46 were further purified using Promega PCR purification columns. All extractions were
47
48 carried out in the special ancient DNA facility of Leiden University following
49
50 established protocols to avoid contamination (Cooper and Poinar; 2000).
51
52
53
54

55 56 PCR amplification

57
58
59
60

1
2
3 Amplifications of the plastid *rbcL* DNA barcoding marker were performed using
4 forward primer Z1aF and reverse primer 19bR (Hofreiter et al. 2000). Amplification
5 of the plastid intergenic *trnL-trnF* spacer was performed using forward primer E and
6 reverse primer F (Taberlet et al. 1991). Primers were labeled for sequencing with
7 IonExpress labels. The PCR was carried out in 25µl reactions containing 1U Phire hot
8 start II DNA polymerase, Phire reaction buffer, 1mM MgCl₂, 0.1mg/ml BSA, 1%
9 DMSO, 0.05 mM dNTPs, and 0.4 µM of each primer. Amplifications were performed
10 using a 5 min activation step at 98 °C, followed by 40 cycles at 98 °C for 5 s, 55 °C
11 for 20 s and 72 °C for 60 s, and a concluding step at 72 °C for 5 min.
12
13
14
15
16
17
18
19
20
21
22

23 Ion Torrent sequencing

24
25
26 With the use of Ampure XP beads from Agencourt primer dimer was removed from
27 the PCR products generated. The beads were washed with 150 µl 70% EtOH twice
28 and resuspended in 20 µl TE buffer. Cleaned PCR products were quantified using an
29 Agilent 2100 Bioanalyzer DNA High sensitivity chip. An equimolar pool was
30 prepared of the amplicon libraries at the highest possible concentration. This
31 equimolar pool was diluted according to the calculated template dilution factor to
32 target 10-30% of all positive ISPs. Template preparation and enrichment was carried
33 out with the Ion One Touch 200 Template kit with use of the Ion One Touch System,
34 according to the manufacturers protocol. The quality control of the Ion one touch 200
35 Ion Sphere Particles was done with the Ion Sphere Quality Control Kit using a Life
36 Qubit 2.0. The Enriched Ion Spheres were prepared for sequencing on a Personal
37 Genome Machine (PGM) with the Ion PGM 200 Sequencing kit as described in the
38 protocol and deposited on an Ion-314-chip (520 cycles per run) in three consecutive
39 loading cycles for one sequencing run.
40
41
42
43
44
45
46
47
48
49
50
51
52
53
54
55
56
57
58
59
60

Data analysis

Reads obtained from Ion Torrent sequencing were trimmed with CLC Workbench Genomics (version 4.5). Only reads with a length of at least 100 bp were selected for further analysis. Reads were clustered into Operational Taxonomic Units (OTU's) defined by a sequence similarity of at least 97% using the Octopus pipeline. Representative consensus sequences of each cluster were blasted against NCBI GenBank data for taxonomic identification up to family level.

Results

Microfossils

Table 1 shows the results of the microfossil analysis. Percentages are based on the pollen sum, which is the total of recorded pollen grains per sample. Non-pollen microfossils were excluded from the sum but their frequencies are expressed on that pollen sum. A cluster of pollen grains of Poaceae (Fig. 1d) was recorded as a single grain. The ascospore cells of the dung-inhabiting *Sporormiella*-type and the ascospores of the coprophilous *Sordaria*-type (van Geel and Aptroot, 2006) show relatively high percentages. *Delitschia* ascospores also point to the occurrence of feces as a substrate. No fungal fruit-bodies were found during macrofossil analysis, so ascospores were ingested by chance, together with the grazed herbaceous vegetation. *Clasterosporium caricinum* is an indicator for the local occurrence of *Carex* (van Geel and Aptroot, 2006). A newly recorded dark-brown ascospore type (38-53 x 20-33 μ m, including the light-brown velum) was named as Type 815 (Fig. 1e). Those spores show a pore with a thickened wall at one end. The other end is flattened, with

1
2
3 a pore. Considering their morphology these spores may well represent one of a dung-
4 inhabiting Sordariales (Lundqvist, 1972). Newly recorded globose spores, 18-26 μm
5 in diameter with an irregularly placed, dense pattern of rounded appendages (0.3-1
6 μm in diameter) were named as Type 816 (Fig. 1f). These spores probably have a
7 Bryophyte origin. The microfossil sample contained many multicellular rhizoids
8 fragments with oblique septa as occurring in *Bryum* (Fig. 2d).
9
10
11
12
13
14
15
16
17

18 *Macrofossils*

19
20 The investigated sample consisted of debris of vegetative plant remains. In
21 total 45 ml of vegetation debris was investigated. The plant remains were fragmented
22 with different degrees of decomposition and therefore estimation of mass or volume
23 fraction of the individual categories was impossible. The plant remains mainly
24 consisted of vegetative remains of Cyperaceae (Fig. 1g-m) and, to a lesser extend of
25 Poaceae (Fig. 1c). Two fragmented Poaceae spikelets were found. The following
26 bryophytes could be identified: *Plagiomnium cf. ellipticum*, *cf. Rhizomnium*
27 *pseudopunctatum*, *Polytrichastrum alpinum* (Fig. 2a,b), *Campylium cf. stellatum* (Fig.
28 2c) and *Sphagnum* sp. (see Table 1 for summary of results).
29
30
31
32
33
34
35
36
37
38
39
40
41
42
43
44

45 *Ancient DNA*

46
47 Taxa with 100% certainty retrieved encompass genera within the Cyperaceae (*Carex*
48 and *Eriophorum*), Myricaceae (*Comptonia*), Poaceae (*Poa*), Ranunculaceae (*Caltha*)
49 and Salicaceae (*Salix*). Matches found between Ion Torrent reads obtained and
50 reference data in NCBI GenBank were less (88-96%) for *Agrostis* (Poaceae) and
51 *Menyanthes* (Menyanthaceae) (see Table 1 for more details).
52
53
54
55
56
57
58
59
60

Lipids

Figure 3 shows the *n*-alkane and *n*-alkanol distributions of the horse intestinal tract contents. *n*-alkanes range from C₂₄ to C₃₃ with a strong odd over even predominance, maximising at C₂₉. *n*-alkanols range from C₂₂ to C₂₈, maximising at *n*-C₂₆. This distribution of *n*-alkanes and *n*-alkanols is consistent with a major input of higher plant organic matter with the predominance of the C₂₆ alkanol indicating a significant contribution from Poaceae (Dove & Mayes, 1996; Maffei, 1996; van Bergen et al., 1997; Bughalo et al., 2004; Killops & Killops, 2005).

Figure 4 show a partial gas chromatogram of the alcohol fraction isolated from the horse intestinal tract contents. The presence of a suite of 5β-stanol components (C₂₇ to C₂₉) confirms that this is digested matter, since these compounds are uniquely formed in the digestive tract by biohydrogenation of unsaturated sterols by digestive tract bacteria (Murtaugh and Bunch, 1967). The predominance of the C₂₉ 5β-stanols (stigmastanol and epistigmastanol) and the occurrence of the phytosterol sitosterol is consistent with an herbivorous diet (Leeming et al., 1997; Bull et al., 2002).

No archaeol was detected in the horse intestinal tract alcohol fraction. This is consistent with previous studies on faecal lipids of modern herbivorous mammals (Gill et al., 2010) in which archaeol, attributed to digestive tract methanogenic archaea, was detected in the faeces of foregut fermenters, but not hindgut fermenters, including horses.

Discussion

1
2
3 *Palaeovegetation* - Based on the pollen record it seems that Poaceae (grasses) were a
4
5 major component in the vegetation. But the presence of a cluster of pollen grains of
6
7 Poaceae shows that the pollen spectra can be strongly biased by the food selection of
8
9 the animal and by the fact that inflorescences - if still full of not yet released pollen
10
11 grains - may result in over-representation in pollen spectra. Pollen grains ingested
12
13 during the growing season will represent mainly the taxa that were flowering when
14
15 the animal collected its food and therefore the pollen record of intestinal contents may
16
17 well be strongly seasonally dependent (compare present day 'pollen calendars'
18
19 showing the different flowering periods of taxa).
20
21

22
23 The microfossil record supports the conclusion based on pollen, as epidermis
24
25 fragments of Poaceae were observed, but the vegetative remains of Cyperaceae were
26
27 more common than those of Poaceae. The mosses probably were ingested by chance,
28
29 together with the monocots. The identified moss species indicate moist or wet habitats
30
31 (fens, marshes or along streams) and calcareous soils. Based on the study of ancient
32
33 DNA we have additional data about plant taxa that played a role in the vegetation
34
35 where the horse grazed its last meal. *Carex*, *Eriophorum*, *Caltha* and *Menyanthes* may
36
37 well have formed part of the vegetation in moist areas in the landscape, while *Agrostis*
38
39 and *Poa* may have grown on dry soils. Uncertainties in the identifications based on
40
41 aDNA are expressed as 'percentages query coverage'. Retrieval of *Menyanthes* (93%
42
43 coverage) and *Agrostis* (96% coverage), although supported with short reads only, is
44
45 likely correct as the present distribution of these taxa is congruent with the area where
46
47 the horse was found. We reject any possibility of contamination as we included
48
49 extraction and amplification blanks in all analyses.
50
51

52
53
54 The age of the Yukagir horse is about 5400 calendar years before present
55
56 according to radiocarbon dating. Pollen diagrams from lake deposits allow us to
57
58
59
60

1
2
3 compare the vegetation record from the horse with the regional historical vegetation
4 development. The middle Holocene vegetation near the Laptev Sea coast is
5
6 characterized by the development of tundra with a vegetation similar to the modern
7
8 (Andreev et al., 2011). Apart from climatic factors, like temperature and precipitation,
9
10 grazing herbivores may also have had an impact on the species composition of the
11
12 vegetation. Olofsson (2006) found that increased reindeer grazing pressure in northern
13
14 Norway stimulated grassland species at the expense of dwarf shrub vegetation.
15
16 Poaceae are 'adapted' to grazing as their growing points are just above the soil surface.
17
18 Grazing does not do any harm to grasses; in fact grazing stimulates their growth.
19
20 Based on observations in 'Pleistocene Park' in northern Yakutia, Zimov (2005)
21
22 developed a theory about the disappearance of the mammoth steppe at the beginning
23
24 of the Holocene. At that time mammoths and other large herbivores disappeared and
25
26 in northern Siberia the grasslands of the mammoth steppe were replaced by mossy
27
28 tundra and forest tundra. The only herbivores to survive were reindeer that mainly
29
30 grazed on lichens, and moose that fed on willows. Many authors (e.g. Guthrie, 2001)
31
32 consider the change of landscape and vegetation at the start of the Holocene as the
33
34 effect of climate change from dry to humid conditions, but according to Zimov,
35
36 Pleistocene animals would have maintained their own grassland ecosystem unless
37
38 hunting humans acted as ecosystem terminators. Zimov suggests that herbivore
39
40 populations were decimated by human hunting. The present climate in northeastern
41
42 Siberia is not humid but rather is characteristic of an arid steppe and according to
43
44 Zimov the northern grasslands would have remained viable in the Holocene if the
45
46 great herds of Pleistocene animals had remained in place to maintain the landscape. If
47
48 we accept Zimov's argument that the pasture landscapes were destroyed because
49
50 herbivore populations were decimated by human hunting, then it stands to reason that
51
52
53
54
55
56
57
58
59
60

1
2
3 those landscapes can be reconstituted by the return of appropriate herbivore
4
5 communities.
6
7
8
9

10 *Comparison of methods* - The methods used (microfossils, macroremains, aDNA and
11 chemistry) show agreements and differences in the results and we realize that these
12 methods are not equal in their palaeo-environmental indicator value. Macrofossils and
13 lipid data mainly tell us about the food choice of the animal, but the pollen and aDNA
14 records of taxa do not necessarily point to the composition of the last meal of the
15 horse. Ancient DNA may mainly come from the ingested plant species, but pollen
16 grains may also be a source of the DNA-recorded taxa. Wind-pollinated taxa produce
17 high amounts of pollen that is transported all over the region and may be ingested by
18 chance, together with the food plants. The pollen of insect-pollinated taxa is less
19 common (produced in relatively low amounts) but may also be deposited on grazed
20 plants. Grazing animals also may ingest some of the litter on top of the soil and in this
21 way pollen from throughout the flowering season may be ingested. A total of 16
22 different plant families were identified based on our integrated study of pollen,
23 Ancient DNA and macroremains. The pollen study retrieved most of the families (11
24 of which 6 were not detected by Ancient DNA or macroremains). The Ancient DNA
25 study revealed 7 families (of which 2 families were not detected by the other
26 methods) and the macroremains indicated that 6 families were part of the palaeo-
27 environment (2 of these families were not detected by the other methods; Table 1).
28 We advocate a multiproxy approach for reconstruction of palaeo-environments and
29 palaeodiets to identify as many families as possible.
30
31
32
33
34
35
36
37
38
39
40
41
42
43
44
45
46
47
48
49
50
51
52
53

54 In lake sediments and peat deposits the frequency changes of spores of
55 coprophilous fungi reflect changes of the population densities of mammals (e.g.,
56
57
58
59
60

1
2
3 Innes et al., 2013). Individual samples from the intestines of herbivores can deliver
4 different, but important information. Based on the presence of fungal fruit-bodies in
5 intestinal mammoth samples van Geel et al. (2008, 2011a,b) concluded that
6
7 coprophagy played a role in the behavior of mammoths. The frequency of spores of
8
9 coprophilous fungi in the intestinal sample from the horse does not show more than
10
11 the presence of faeces in the area where the horse lived. Considering the potential bias
12
13 in the pollen record and the availability of only one horse meal we cannot make firm
14
15 conclusions about climatic conditions. For climatic conditions as derived from the
16
17 fossil record in northern Siberia we refer to Andreev et al. (2011) and to Andreev and
18
19 Tarasov (2013).
20
21
22
23
24
25
26

27 **Conclusions**

28
29 Four methods to study intestinal material of a middle-Holocene horse point to a diet
30
31 of mainly Cyperaceae and Poaceae. Macrofossils and chemistry mainly reflect the
32
33 ingested plants. The taxa detected by ancient DNA and pollen analysis may partly
34
35 reflect species that were not actively grazed, but were producing pollen elsewhere in
36
37 the landscape. The combined data collected support the hypothesis that horses
38
39 changed their diet from predominantly browsing on woody plants to grazing on
40
41 grasses and sedges concurrent with the spread of savanna grasslands.
42
43
44
45
46
47

48 **Acknowledgements**

49
50 Annemarie Philip prepared the microfossil samples and Jan van Arkel made the
51
52 pictures of microfossils and macroremains.
53
54

55 **References**

1
2
3 Andreev, A.A., Schirmermeister, L., Tarasov, P.E., Ganopolski, A., Brovkin, V., Siegert,
4 C., Wetterich, S., Hubberten, H.-W., 2011. Vegetation and climate history in the
5 Laptev Sea region (Arctic Siberia) during Late Quaternary inferred from pollen
6 records. *Quaternary Science Reviews* 30: 2182-2199.

7
8
9 Andreev A.A. and Tarasov P.E., 2013. Northern Asia. In: Elias S.A. (ed.) *The*
10 *Encyclopedia of Quaternary Science*, vol. 4, pp. 164-172. Amsterdam: Elsevier.

11
12
13 Beug, H.J., 2004. *Leitfaden der Pollenbestimmung für Mitteleuropa und angrenzende*
14 *Gebiete*. Verlag Dr. Friedrich Pfeil, München.

15
16
17 Bligh, E.G. and Dyer, W.J., 1959. A rapid method of total lipid extraction and
18 purification. *Canadian Journal of Biochemistry and Physiology* 37, 911–917.

19
20 Boeskorov, G.G., Potapova, O.R., Mashchenko, E.N., Protopopov, A.V., Kuznetsova,
21 T.V., Agenbroad, L., Tikhonov, A.N. 2013. Preliminary analyses of the frozen
22 mummies of mammoth (*Mammuthus primigenius*), bison (*Bison priscus*) and horse
23 (*Equus* sp.) from the Yana-Indigirka Lowland, Yakutia, Russia. *Integrative Zoology*.
24 doi: 10.1111/1749-4877.12079

25
26
27 Bughalo, M. N., Dove, H., Kelman, W., Wood, J. T., Mayes, R. W., 2004. Plant wax
28 alkanes and alcohols as herbivore diet composition markers. *Journal of Range*
29 *Management*, 57, 259-268.

30
31
32 Bull, I.D., Lockheart, M.J., Elhmmali, M.M., Roberts, D.J. and Evershed, R.P., 2002.
33 The origin of faeces by means of biomarker detection. *Environment International* 27,
34 647–654.

35
36
37 Cooper, A. and Poinar, H.N., 2001. Ancient DNA: do it right or not at all. *Science*
38 289: 1139.

39
40
41 Cugny, C., Mazier, F. and Galop, D., 2010. Modern and fossil palynomorphs from the
42 Basque mountains (western Pyrenees, France): the use of coprophilous fungi to
43 reconstruct pastoral activity. *Vegetation History and Archaeobotany* 19: 391-408.

44
45
46 Dove, H. and Mayes, R. W., 1996. Plant wax components: A new approach to
47 estimating intake and diet composition in herbivores. *Journal of Nutrition*, 126, 13-26.

48
49
50 Doyle, J. J. and Doyle, J.L., 1987. A rapid DNA isolation procedure for small
51 quantities of fresh leaf tissue. *Phytochemical Bulletin* 19: 11-15.

52
53
54 Faegri, K. and Iversen, J., 1989. *Textbook of Pollen Analysis*. 4th ed. Wiley,
55 Chichester (revised by K. Faegri, P.E. Kaland and K. Krzywinski).

56
57
58 Gill, F. L., Dewhurst, R. J., Dungait, J. A. J., Evershed, R. P., Ives, L., Li, C., Pancost,
59 R. D., Sullivan, M., Bera, S., Bull, I. D., 2010. Archaeol – a biomarker for foregut
60

- 1
2
3 fermentation in modern and ancient herbivorous mammals. *Organic Geochemistry*,
4 41, 467-472.
5
6 Guthrie, R.D., 1990. *Frozen Fauna of the Mammoth steppe*. The University of
7 Chicago Press, 323 pp. □ □
8
9 Guthrie, R.D., 2001. Origin and causes of the mammoth steppe: a story of cloud
10 cover, woolly mammal tooth pits, buckles, and inside-out Beringia. *Qua- ternary*
11 *Science Reviews* 20, 549–574.
12
13 Hofreiter, M., Poinar, H.N., Spaulding, W.G., Bauer, D., Martin, P.S., Possnert, G.,
14 Pääbo, S., 2000. A molecular analysis of ground sloth diet through the last
15 glaciations. *Molecular Ecology* 9 (12), 1975–1984.
16
17 Innes, J.B., Blackford, J.J. and Rowley-Conwy, P.A., 2013. Late Mesolithic and early
18 Neolithic forest disturbance: a high resolution palaeoecological test of human impact
19 hypotheses. *Quaternary Science Reviews* 77: 80-100.
20
21
22
23
24 Killops, S. and Killops, V., 2005. *Introduction to Organic Geochemistry*, second ed.
25 Blackwell Publishing, Oxford, UK, 393 pp.
26
27 Landwehr, J. 1984. *Nieuwe Atlas Nederlandse Bladmossen*. Thieme, Zutphen, 568 pp.
28
29 Lawton, E., 1971. *Moss Flora of the Pacific Northwest*. — The Hattori Botanical
30 Laboratory. Nichinan. 362 pp. and 195 plates.
31
32
33 Lazarev, P.A., 2008. *Large mammals of the Anthropogen in Yakutia*. Nauka,
34 Novosibirsk, 160 pp. □ □
35
36 Leeming, R., Ball, A., Ashbolt, N. and Nichols, P., 1996. Using faecal sterols from
37 humans and animals to distinguish faecal pollution in receiving waters. *Water*
38 *Research* 30, 2893–2900.
39
40
41 Lundqvist, N., 1972. *Nordic Sordariaceae s. lat. Symbolae Botanicae Upsaliensis*
42 20(1): 1-374.
43
44 McCartney, C.A., Bull, I.D., Yan, T. and Dewhurst, R.J., 2013. Assessment of
45 archaeol as a molecular proxy for methane production in cattle. *Journal of Dairy*
46 *Science*, 96, 1211-1217.
47
48
49 Maffei, M., 1996. Chemotaxonomic significance of leaf wax alkanes in the
50 Graminae. *Biochemical Systematics and Ecology*, 24, 53-64.
51
52
53 Mauquoy, D. and van Geel, B., 2007. Mire and peat macros. In: *Encyclopedia of*
54 *Quaternary Science*, Volume 3 (S.A. Elias, editor) p. 2315-2336, Elsevier.
55
56 Moore, P.D., Webb, J.A. and Collinson, M.E., 1991. *Pollen analysis*. Blackwell
57 Scientific, London
58
59
60

- 1
2
3 Murtaugh, J.J. and Bunch, R.L., 1967. Sterols as a measure of fecal pollution. *Journal*
4 *of the Water Pollution Control Federation* 39, 404–409.
5
6 Nyholm, E., 1968. *Illustrated Moss Flora of Fennoscandia. II. Musci.* — The Botanical
7 Society of Lund. Second Edition. Fascimile 1. Lund. 798 pp.
8
9
10 Olofsson, J., 2006. Short- and long-term effects of changes in reindeer grazing
11 pressure on tundra heath vegetation. *Journal of Ecology* 94: 431-440.
12
13
14
15 Siebel, H. and Doring, H., 2006. *Beknopte Mosflora van Nederland en België*, KNNV
16 Uitgeverij, Utrecht, 559 pp.
17
18 Smith, A.J.E., 1978. *The Moss Flora of Britain and Ireland*, Cambridge University Press,
19 Cambridge, 706 pp.
20
21
22 Taberlet, P., Gielly, L. et al., 1991. Universal primers for amplification of three non-
23 coding regions of chloroplast DNA. *Plant molecular biology* 17(5): 1105-1109.
24
25
26 The Plant List. 2012. Version 1. — Published on the Internet; <http://www.theplantlist.org>
27 (accessed 9th November 2012)
28
29
30 Touw, A. and Rubers, W.V., 1989. *De Nederlandse Bladmossen*, KNNV Uitgeverij,
31 Utrecht, 532 pp.
32
33
34
35
36
37
38
39
40
41
42
43
44
45
46
47
48
49
50
51
52
53
54
55
56
57
58
59
60
- Ukraintseva, V.V., 1979. Vegetation of warm intervals of late Pleistocene and the
extinction of some large herbivorous mammals. *Botanicheskii Zhurnal* 64, 318–330.
- Ukraintseva, V.A., 1993. Vegetation cover and environment of the Mammoth Epoch
in Siberia. *The Mammoth Site of Hot Springs*. South Dakota Inc.
- van Bergen, P.F., Bull, I.D., Poulton, P.R. and Evershed, R.P., 1997. Organic
geochemical studies of soils from the Rothamsted Classical Experiments e I. Total
lipid extracts, solvent insoluble residues and humic acids from Broadbalk Wilderness.
Organic Geochemistry 26, 117-135.
- van Geel, B. and Aptroot, A., 2006. Fossil ascomycetes in Quaternary deposits. *Nova*
Hedwigia 82: 313-329.
- van Geel, B., Aptroot, A., Baittinger, C., Birks, H.H., Bull, I.D., Cross, H.B.,
Evershed, R.P., Gravendeel, B., Kompanje, E.J.O., Kuperus, P., Mol, D., Nierop,
K.G.J., Pals, J.P., Tikhonov, A.N., van Reenen, G. and van Tienderen, P.H., 2008.
The ecological implications of a Yakutian mammoth's last meal. *Quaternary Research*
69: 361-376.
- van Geel, B., Fisher, D.C., Rountrey, A.N., van Arkel, J., Duivenvoorden, J.F.,
Nieman, A.M., van Reenen, G.B.A., Tikhonov, A.N., Buigues, B., and Gravendeel,

1
2
3 B., 2011a. Palaeo-environmental and dietary analysis of intestinal contents of a
4 mammoth calf (Yamal Peninsula, northwest Siberia). *Quaternary Science Reviews*
5 30: 3935-3946.
6

7
8 van Geel, B., Guthrie, R.D., Altmann, J.G., Broekens, P., Bull, I.D., Gill, F.L., Jansen,
9 B., Nieman, A.M. and Gravendeel, B., 2011b. Mycological evidence for coprophagy
10 from the feces of an Alaskan Late Glacial mammoth. *Quaternary Science Reviews* 30:
11 2289-2303.
12

13
14 Wang, Y., Cerling, T.E., MacFadden, B.J. 1994. Fossil horses and carbon isotopes:
15 new evidence for Cenozoic dietary, habitat, and ecosystem changes in North America.
16 *Palaeogeography, Palaeoclimatology, Palaeoecology* 107: 269-279.
17

18
19 Zimov, S.A., 2005. Pleistocene Park: return of the mammoth's ecosystem. *Science*
20 308, 796–798. <http://www.sciencemag.org/content/308/5723/796.1.full>
21

22
23
24 Figure 1: remains of the frozen Yakutian horse and various plant remains from its
25 colon. 1a: hind part of the horse body. 1b: head. 1c: epidermis Poaceae. 1d: cluster of
26 Poaceae pollen. 1e: Type 815 ascospores. 1f: Type 816 (Bryophyte?) spores. 1g-m:
27 various types of cyperaceous epidermis with spiny leaf margins (1g-j) and papillae
28 (1h-j). 1n: unidentified broken seed.
29
30
31

32
33 Figure 2: moss remains from the colon of the Yakutian horse. 2a,b: cross section
34 through leaf of *Polytrichastrum alpinum*. 2c: leaves of *Campylium* cf. *stellatum*. 2d:
35 multicellular rhizoids with oblique septa (cf. *Bryum*).
36
37
38

39
40 Figure 3: n-alkyl lipids from horse intestinal tract contents
41
42
43

44 Figure 4: Partial gas chromatogram of the alcohol fraction isolated from the horse
45 intestinal tract contents. Trivial names are given in brackets.
46
47
48

49 Table 1: Table 1. Microfossil spectra, macrofossil and Ancient DNA data. NL:
50 analysis by BvG; RU: analysis by NAR, SST and SVZ. Non-pollen palynomorphs
51 were recorded in the NL sample only. Observations that were made after finishing the
52 counting procedure have been indicated with +.
53
54
55
56
57
58
59
60

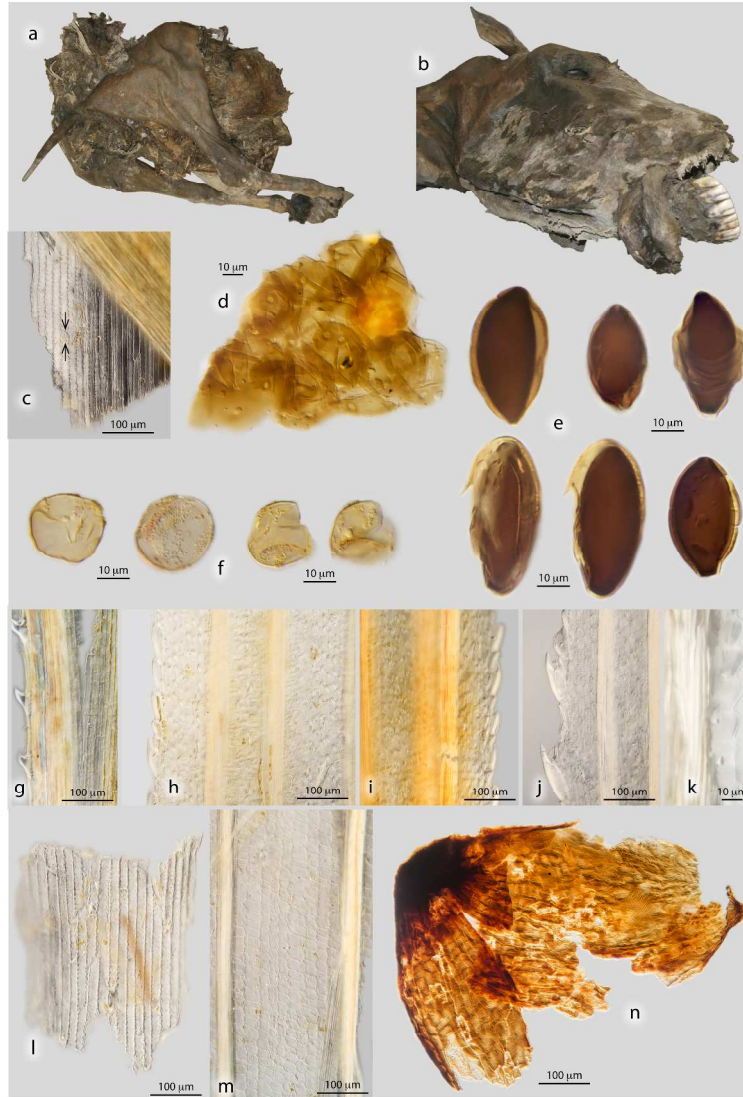


Figure 1: remains of the frozen Yakutian horse and various plant remains from its colon. 1a: hind part of the horse body. 1b: head. 1c: epidermis Poaceae. 1d: cluster of Poaceae pollen. 1e: Type 815 ascospores. 1f: Type 816 (Bryophyte?) spores. 1g-m: various types of cyperaceous epidermis with spiny leaf margins (1g-j) and papillae (1h-j). 1n: unidentified broken seed.
297x420mm (300 x 300 DPI)

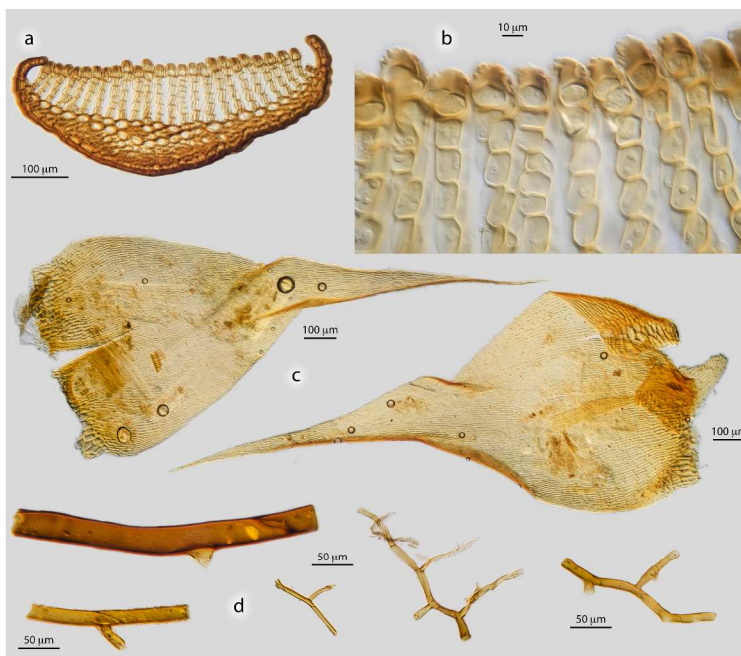


Figure 2: moss remains from the colon of the Yakutian horse. 2a,b: cross section through leaf of *Polytrichastrum alpinum*. 2c: leaves of *Campylium cf. stellatum*. 2d: multicellular rhizoids with oblique septa (cf. *Bryum*).
297x420mm (300 x 300 DPI)

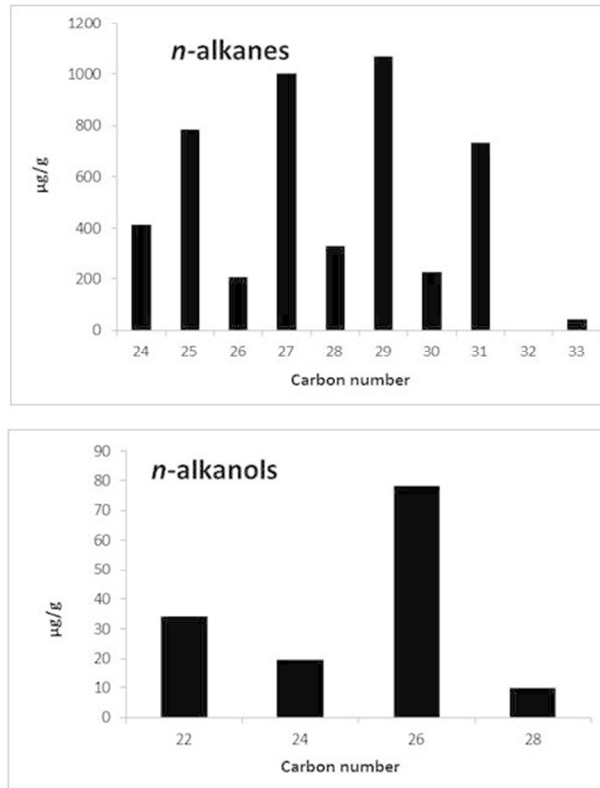


Figure 3: n-alkyl lipids from horse intestinal tract contents
190x254mm (96 x 96 DPI)

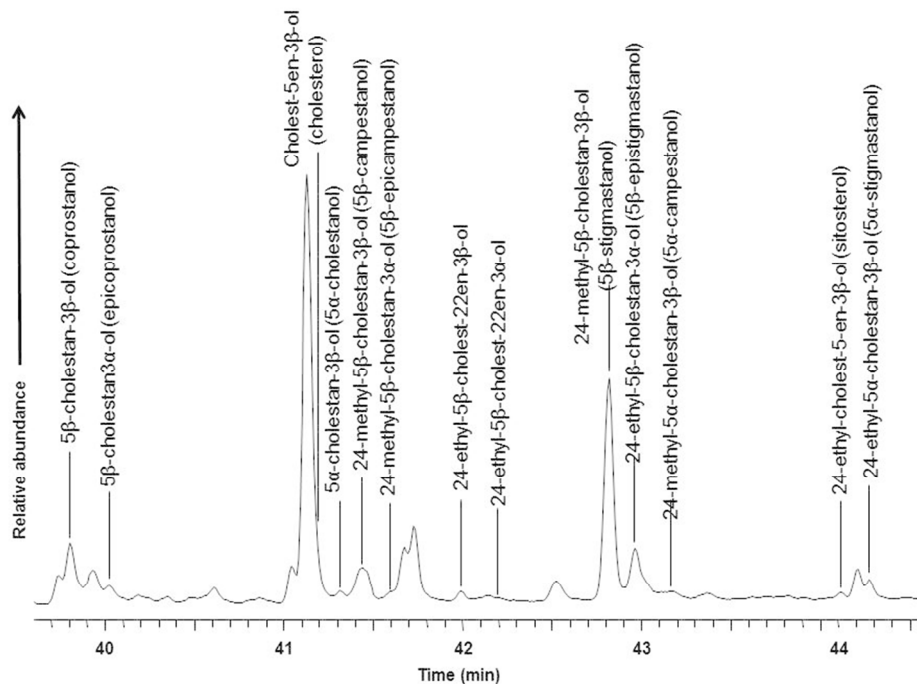


Figure 4: Partial gas chromatogram of the alcohol fraction isolated from the horse intestinal tract contents. Trivial names are given in brackets.
254x190mm (96 x 96 DPI)

Table 1.

Family/order	Genus/species	Pollensum (NL) 422 %	Pollensum (RU) 311 %	DNA barcoding marker	Most similar GenBank accession	Query cover (bp)	E value	Macroremains vegetative	Macroremains fertile (spikelets)
Phanerogams:									
Apiaceae	indet	0.2	-						
Asteraceae	Tubiflorae	0.5	0.6						
	<i>Artemisia</i> sp.	+							
Betulaceae	<i>Alnus</i> sp.	1.7							
	<i>Betula</i> sp.	2.4							
	<i>Betula</i> sect. <i>Nanae</i>		0.6						
Cyperaceae	indet	2.6	4.5					+	
	<i>Carex</i> sp.			<i>trnL</i>	JN873698	100	3e-40		
	<i>Eriophorum</i> sp.			<i>trnL</i>	JN644736	100	5e-54		
Ericales	indet	0.2	0.3						
Indet			0.3						
Menyanthaceae	<i>Menyanthes</i> sp.			<i>rbcL</i>	JN965669	93	1e-17		
Myricaceae	<i>Comptonia</i> sp.			<i>rbcL</i>	DQ310505	100	0		
Papaveraceae	<i>Papaver rhoeas</i> + -type								
Pinaceae	indet		0.3						
	<i>Abies</i> sp.		0.3						
	<i>Pinus</i> subgenus <i>Diploxylon</i>		0.3						
Plantaginaceae	<i>Plantago</i> sp.		0.3						
Poaceae	indet	91.5	91.6	<i>trnL</i>	HM590235	100	6e-42	+	+
	<i>Agrostis</i> sp.			<i>rbcL</i>	EF115543	96	6e-65		
	<i>Poa</i> sp.			<i>trnL</i>	JN030974	100	2e-36		
Ranunculaceae	indet	0.2	0.3						
	<i>Caltha</i> sp.			<i>rbcL</i> ; <i>trnL</i>	AY365367	100	1e-37		
Salicaceae	<i>Salix</i> sp.	0.7		<i>trnL</i>	JN873698	100	3e-40		

Cryptogams:

8	Amblystegiaceae	<i>Campylium</i> cf. <i>stellatum</i>							+
10	Mniaceae	<i>Plagiomnium</i> cf. <i>ellipticum</i>							+
12		<i>Rhizomnium</i> cf. <i>pseudopunctatum</i>							+
13	Polypodiophyta	indet	0.6						
14	Polytrichaceae	indet		<i>trnL</i>	AF545029	94	9e-17		
16		<i>Polytrichastrum</i> <i>alpinum</i>							+
17	Sphagnaceae	<i>Sphagnum</i> sp.	+						+
19	Fungi:								
21	Delitschiaceae	<i>Delitschia</i> + (Type TM-023)							
23	Magnaporthaceae	<i>Clasterosporium</i> + <i>caricinum</i> (T. 126)							
25	Sporormiaceae	<i>Sporormiella</i> - type (T. HdV-113)	7.8						
27	Sordariaceae	<i>Sordaria</i> -type (T. HdV-55)	1.4						
28	Indet	Type 815	0.5						
29		Type 816	1.4						