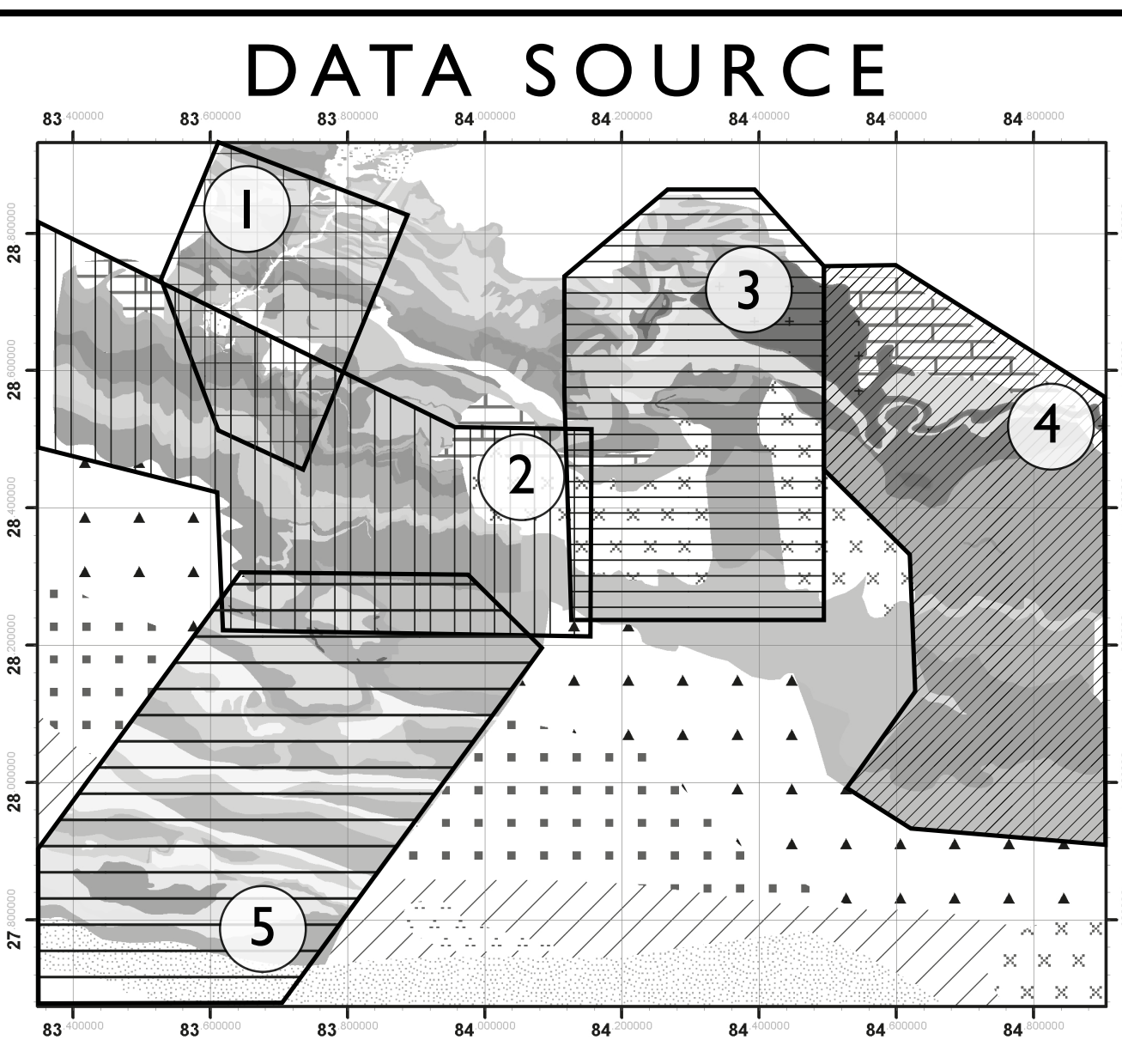
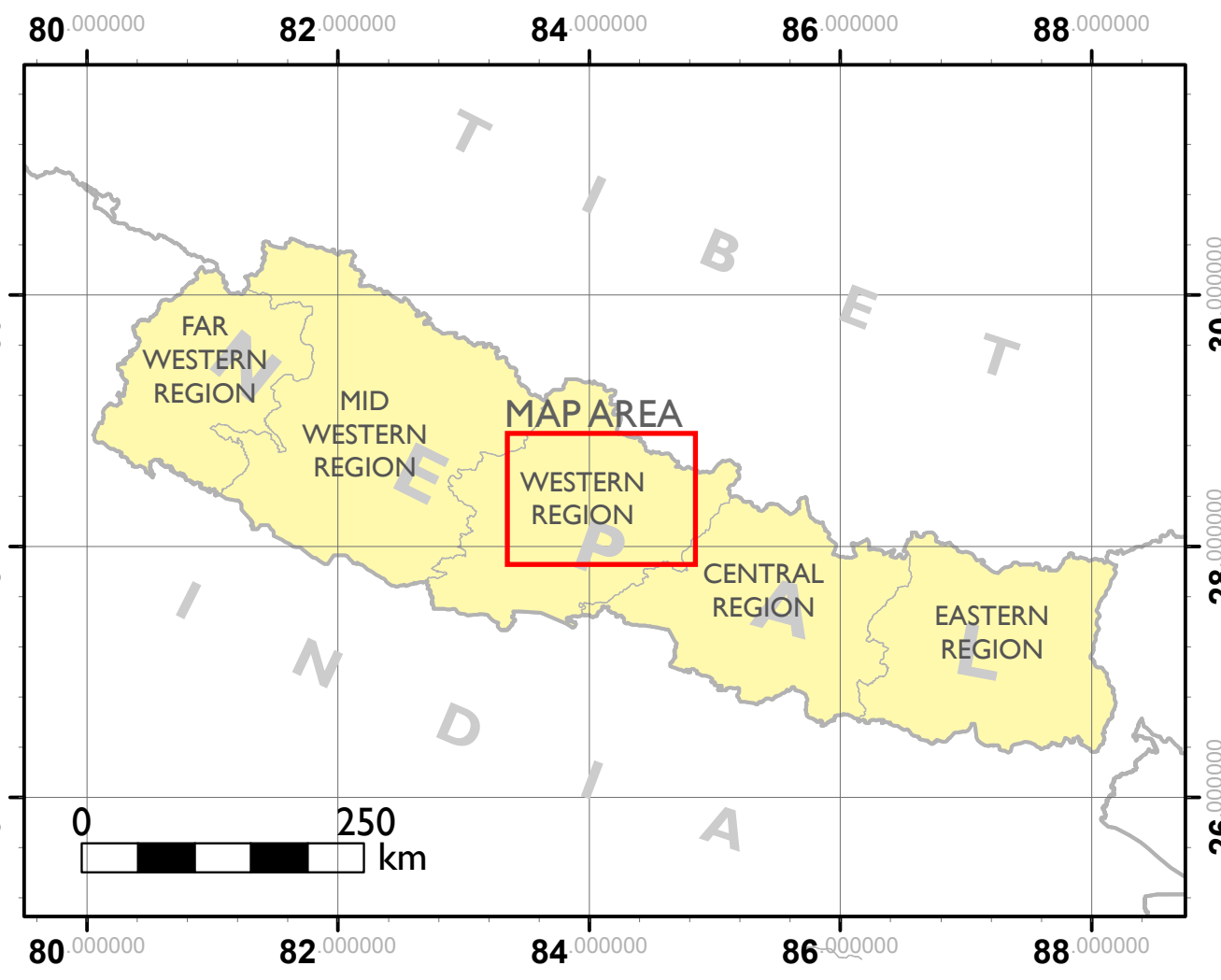
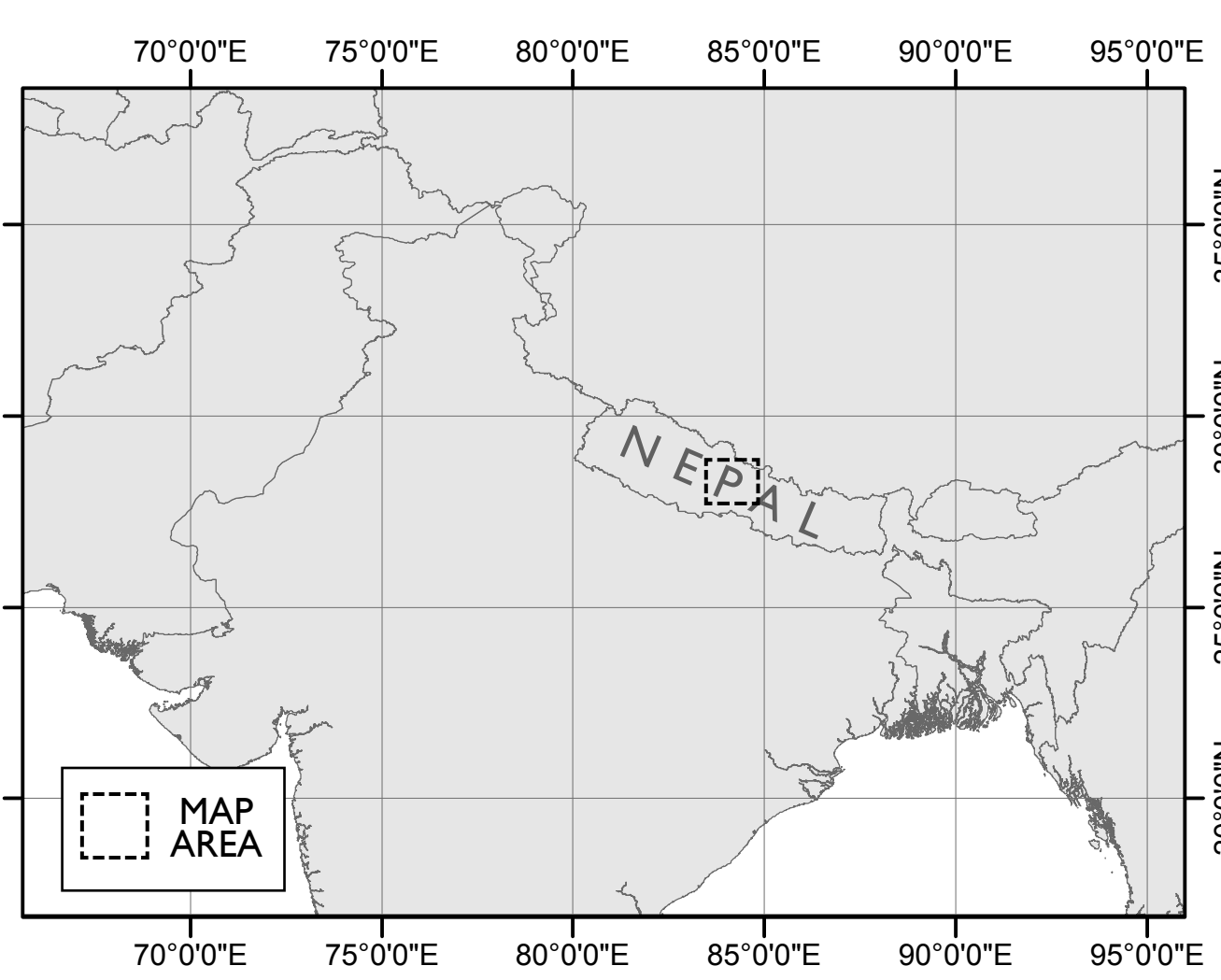


GEOLOGY OF THE DHAULAGIRI-ANNAPURNA-MANASLU HIMAL, WESTERN REGION, NEPAL

1:200,000

A.J. PARSONS^a, R.D. LAW^b, M.P. SEARLE^c, R.J. PHILLIPS^a, G.E. LLOYD^a

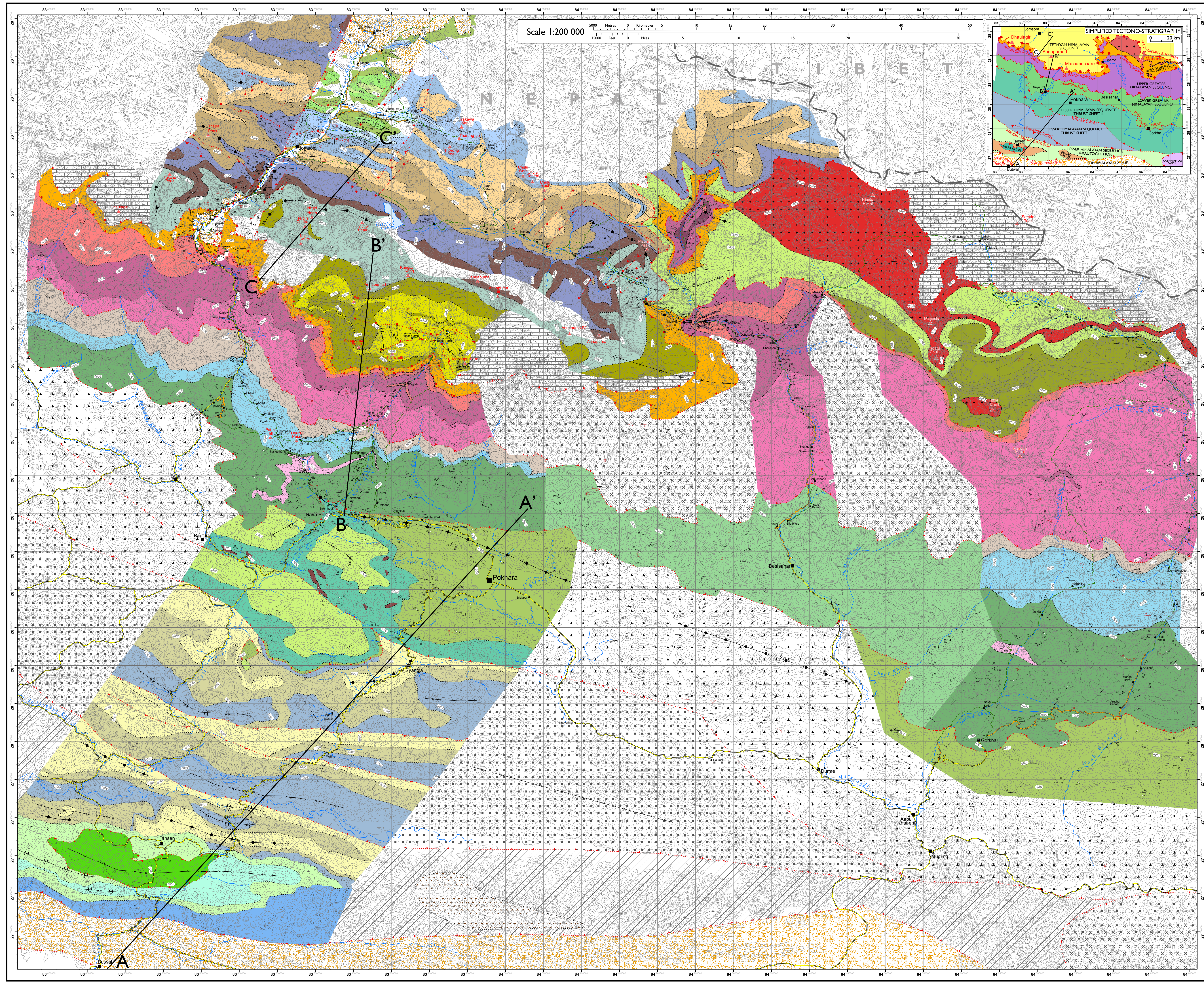
a. School of Earth & Environment, University of Leeds, UK
 b. Department of Geosciences, Virginia Polytechnic Institute & State University, Blacksburg VA, USA
 c. Department of Earth Sciences, University of Oxford, UK



Map compiled from previously published data and from fieldwork conducted by A.J. Parsons in regions 1 and 2 during 2012 and 2013:

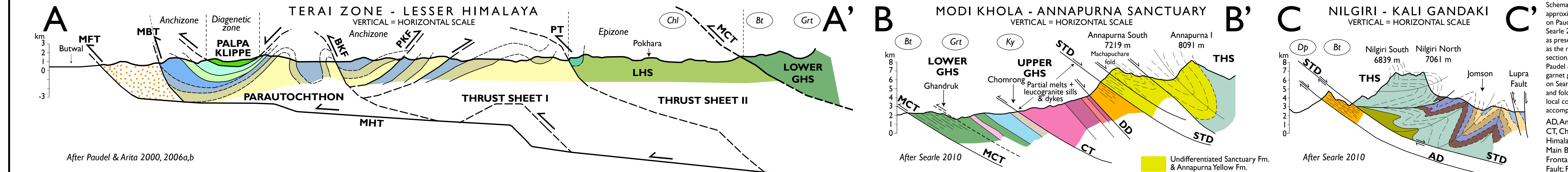
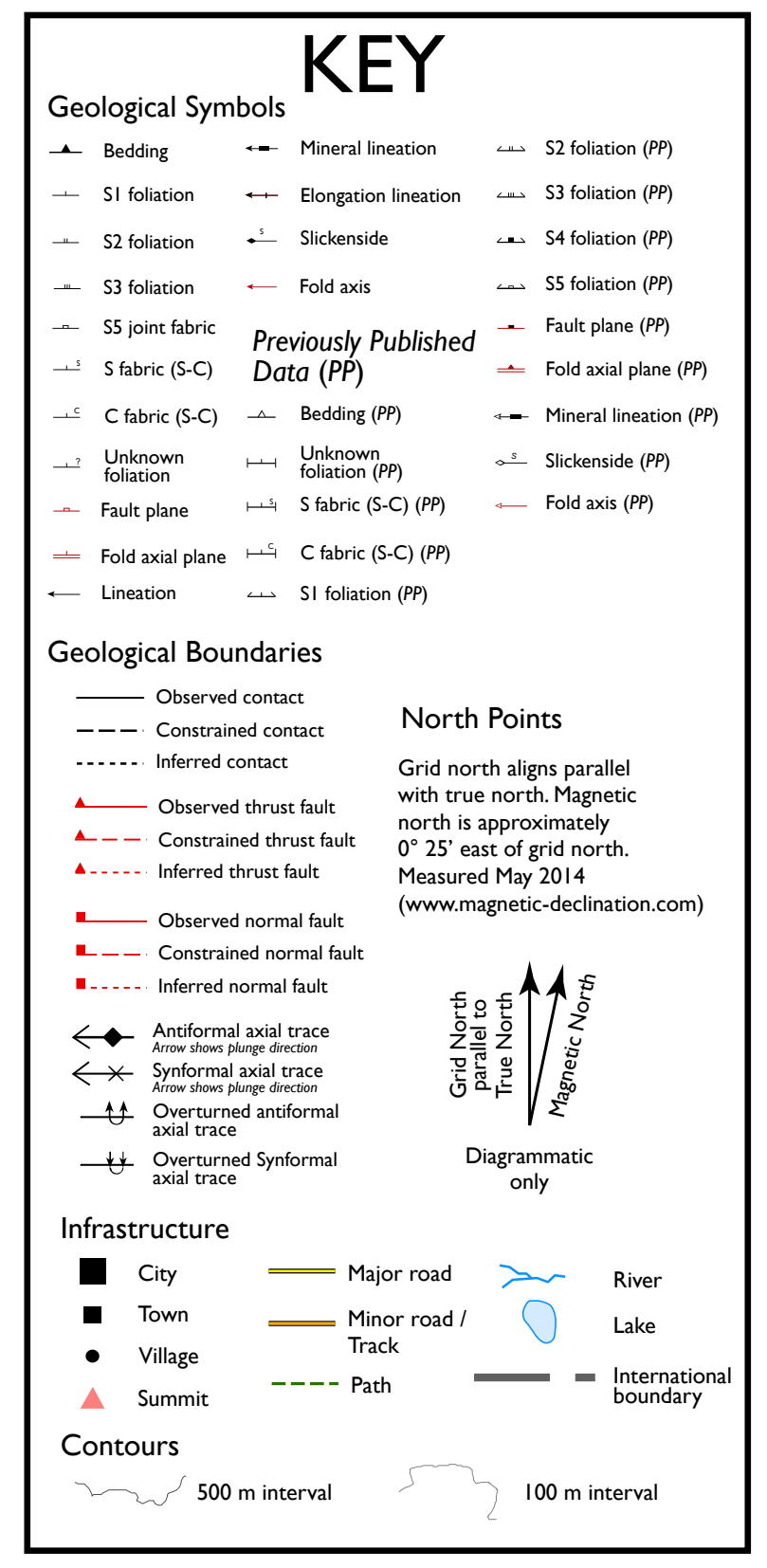
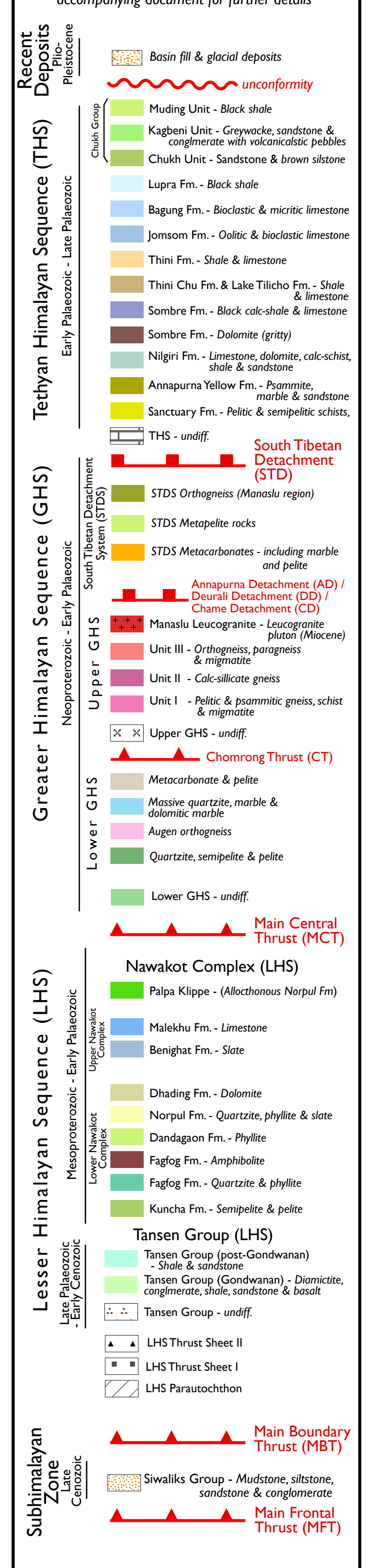
Region 1 - Godin 2003
Region 2 - Larson & Godin 2009; Martin *et al.* 2010; Searle 2010
Region 3 - Coleman 1996; Catlos *et al.* 2001; Gleeson & Godin 2006; Godin *et al.* 2006a
Region 4 - Larson *et al.* 2010
Region 5 - Paudel & Arita 2000, 2006ab
Rest of map - Colchen *et al.* 1981; Paudel & Arita 2000; Bollinger *et al.* 2004

Additional information based on interpretation of ASTER and Landsat satellite images.
 Structural measurements in regions 1 and 2 were collected by A.J. Parsons during fieldwork in 2012 and 2013.
 Topographic data supplied by De Ferranti 2012 and Jarvis *et al.* 2008.
 Infrastructure data supplied by Esri Inc.
 Plotted using Geographic Coordinate System & Map Datum: WGS 1984
 See accompanying document for further details.



STRATIGRAPHY

Stratigraphic divisions based on published stratigraphy defined by Le Fort 1975, Stöcklin 1980, Colchen *et al.* 1981, Garzanti 1999, Paudel & Arita 2000, Godin 2003, Godin *et al.* 2006a and Searle *et al.* 2008. See accompanying document for further details.



Schematic cross sections through Western Region, Nepal showing the approximate geological structure of the region. Section A-A' is based on Paudel & Arita 2000, 2006a,b. Sections B-B' and C-C' are based on Searle 2010. Colour scheme and stratigraphic divisions are the same as presented in the map. All cross sections are drawn to the same scale as the map. Approximate metamorphic grade is presented above each section, ranging from diagenetic to eclogite zone (based on Paudel & Arita 2000, 2006a,b), chlorite grade (Chl), biotite grade (Bt), garnet grade (Grt), kyanite grade (Ky) and diopside grade (Dp) (based on Searle 2010 and field work conducted by A.J. Parsons). Named faults and folds are indicated. Abbreviations are given below. The positions of local outcrops are also shown. For further details see the accompanying document.
 AD, Annapurna Detachment; BKF, Bari Gad-Kali Gandaki Fault; CT, Chomrong Thrust; DD, Deurali Detachment; GHS, Greater Himalayan Sequence; LHS, Lesser Himalayan Sequence; MBT, Main Boundary Thrust; MCT, Main Central Thrust; MFT, Main Frontal Thrust; MHT, Main Himalayan Thrust; PFK, Pindki Khola Fault; PT, Phalebas Thrust; STD, South Tibetan Detachment.