



UNIVERSITY OF LEEDS

This is a repository copy of *Structural basis of high-order oligomerization of the cullin-3 adaptor SPOP.*

White Rose Research Online URL for this paper:
<http://eprints.whiterose.ac.uk/79623/>

Version: Supplemental Material

Article:

van Geersdaele, LK, Stead, MA, Harrison, CM et al. (5 more authors) (2013) Structural basis of high-order oligomerization of the cullin-3 adaptor SPOP. *Acta Crystallographica Section D: Biological Crystallography*, 69 (9). 1677 - 1684. ISSN 0907-4449

<https://doi.org/10.1107/S0907444913012687>

Reuse

Unless indicated otherwise, fulltext items are protected by copyright with all rights reserved. The copyright exception in section 29 of the Copyright, Designs and Patents Act 1988 allows the making of a single copy solely for the purpose of non-commercial research or private study within the limits of fair dealing. The publisher or other rights-holder may allow further reproduction and re-use of this version - refer to the White Rose Research Online record for this item. Where records identify the publisher as the copyright holder, users can verify any specific terms of use on the publisher's website.

Takedown

If you consider content in White Rose Research Online to be in breach of UK law, please notify us by emailing eprints@whiterose.ac.uk including the URL of the record and the reason for the withdrawal request.

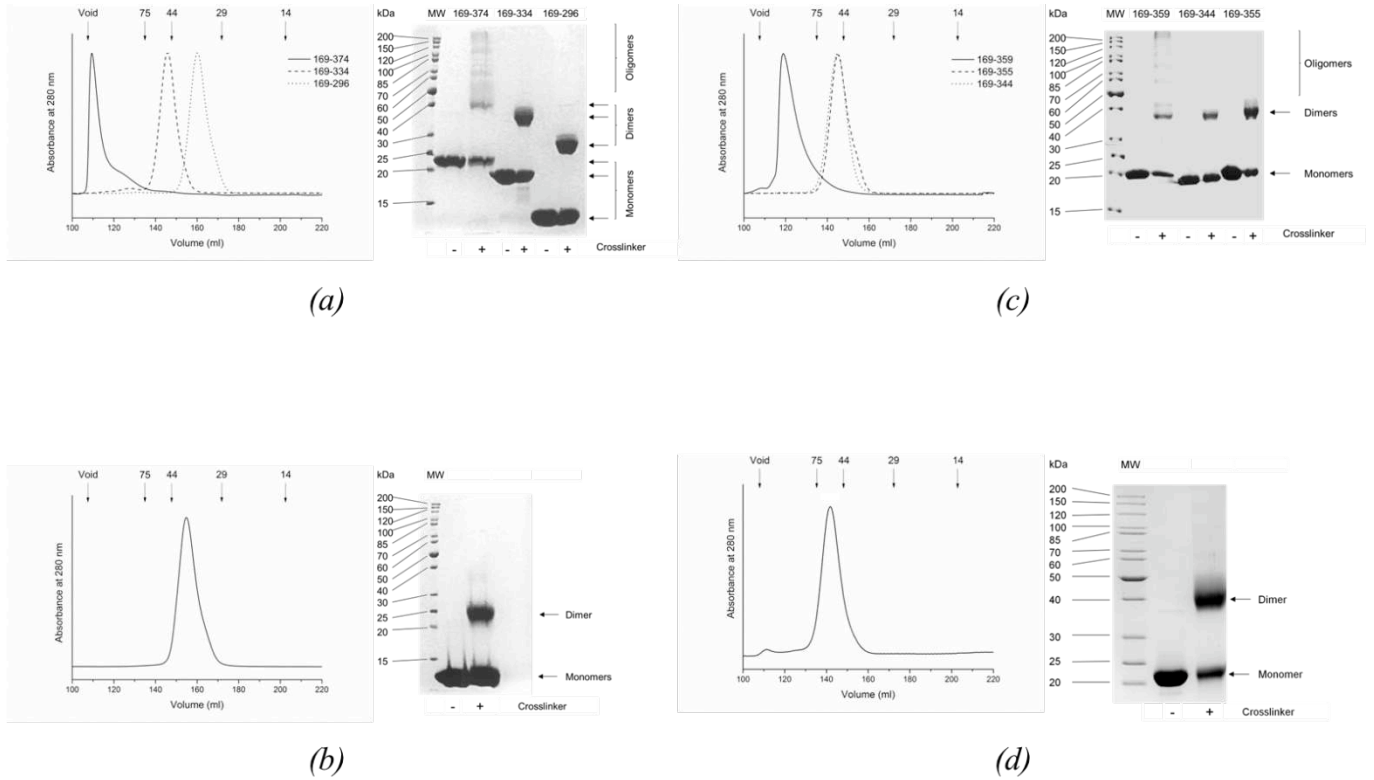


eprints@whiterose.ac.uk
<https://eprints.whiterose.ac.uk/>

Supplementary Materials

Figure S1

Size-exclusion chromatography and chemical cross-linking of SPOP proteins.



(a) SPOP¹⁶⁹⁻³⁷⁴, SPOP¹⁶⁹⁻³³⁴ and SPOP¹⁶⁹⁻²⁹⁶. (b) SPOP^{270-374[L273D L282D L285K]}. (c) SPOP¹⁶⁹⁻³⁵⁹, SPOP¹⁶⁹⁻³⁵⁵ and SPOP¹⁶⁹⁻³⁴⁴. (d) SPOP^{169-374 Y353E}

The arrows above the chromatography traces indicate the elution volumes of globular protein standards of known molecular weight (Gel Filtration LMW Calibration Kit, GE Healthcare). The SPOP proteins have an extended shape; the size-exclusion chromatography was therefore used to compare the elution profiles of similar SPOP proteins, but not to calculate accurate molecular weights.

Figure S2

Examples of SPOP¹⁶⁹⁻³⁷⁴ oligomers as imaged using atomic force microscopy.

