



UNIVERSITY OF LEEDS

This is a repository copy of *An investigation into the pathogenesis of vulvo-vaginal candidosis* .

White Rose Research Online URL for this paper:  
<http://eprints.whiterose.ac.uk/258/>

---

**Article:**

El-Din, S.S., Reynolds, M.T., Ashbee, H.R. et al. (2 more authors) (2001) An investigation into the pathogenesis of vulvo-vaginal candidosis. *Sexually Transmitted Infections*, 77 (3). pp. 179-183. ISSN 0148-5717

<https://doi.org/10.1136/sti.77.3.179>

---

**Reuse**

Unless indicated otherwise, fulltext items are protected by copyright with all rights reserved. The copyright exception in section 29 of the Copyright, Designs and Patents Act 1988 allows the making of a single copy solely for the purpose of non-commercial research or private study within the limits of fair dealing. The publisher or other rights-holder may allow further reproduction and re-use of this version - refer to the White Rose Research Online record for this item. Where records identify the publisher as the copyright holder, users can verify any specific terms of use on the publisher's website.

**Takedown**

If you consider content in White Rose Research Online to be in breach of UK law, please notify us by emailing [eprints@whiterose.ac.uk](mailto:eprints@whiterose.ac.uk) including the URL of the record and the reason for the withdrawal request.



[eprints@whiterose.ac.uk](mailto:eprints@whiterose.ac.uk)  
<https://eprints.whiterose.ac.uk/>

Original  
articleAn investigation into the pathogenesis of  
vulvo-vaginal candidosis

S S El-Din, M T Reynolds, H R Ashbee, R C Barton, E G V Evans

**Objective:** To monitor yeasts isolated from women during and between episodes of recurrent vulvo-vaginal candidosis (VVC) to determine whether vaginal relapse or re-infection occurred.

**Methods:** Women presenting at the genitourinary medicine clinic with signs and symptoms of VVC were recruited to the study (n = 121). A vaginal washing, high vaginal swab (HVS) and rectal swab were taken and the women treated with a single 500 mg clotrimazole pessary. Women were asked to re-attend after 1, 4, and 12 weeks, or when the VVC recurred, when vaginal washings and HVS were repeated. *Candida* isolates recovered were strain typed using the Ca3 probe and their similarity assessed. Antifungal susceptibility to fluconazole and clotrimazole were determined.

**Results:** Of the women recruited, 47 completed the study, either returning for four visits or suffering a recurrence during the study period. Of the 22 women who experienced recurrence, the same strain was responsible for the initial and recurrent episode in 17 women. For the remaining five women, four had strain replacement and one had a change of species. None of the isolates recovered from the women demonstrated resistance to either clotrimazole or fluconazole.

**Conclusions:** Our findings support the theory of vaginal relapse and thus may support the use of more prolonged courses of antifungal therapy initially to increase the chances of eradication of the yeast.

(Sex Transm Inf 2001;77:179–183)

Keywords: vaginal candidosis

## Introduction

Vulvo-vaginal candidosis (VVC) is a very common condition and most women will experience at least one episode during their reproductive years.<sup>1</sup> A minority of women, however, suffer recurrent episodes of candidosis which can significantly affect their quality of life and their sexual health. While a number of factors are probably important in the pathogenesis of recurrent thrush, there are two main theories as to why some women experience frequent recurrences<sup>2</sup>:

- Re-infection either from a sexual partner or a reservoir of yeasts in the gut
- Vaginal relapse due to incomplete eradication of the yeasts.

Several groups have found that in most women with vaginal thrush, identical species can also be isolated from the rectum.<sup>3–5</sup> However, attempts to eradicate the carriage of yeasts in the gut have not been shown in controlled trials to reduce significantly the number of symptomatic vaginal recurrences.<sup>6–9</sup> Similarly, randomised controlled trials have shown that the treatment of male sexual partners with antifungals has no effect on the clearance and/or recurrence rate of vaginal candida in women.<sup>10–12</sup> Some studies have used DNA fingerprinting methods to examine the genetic variability of yeasts isolated from women at successive symptomatic episodes of candida vaginitis, but in most of them samples were not taken between recurrences.<sup>13 14</sup> Therefore, it was unclear whether the yeasts were eradicated after the initial therapy or merely persisted without causing symptoms.

The aim of this investigation was therefore to monitor the yeasts isolated from women not only during but also in between recurrent episodes of VVC, using molecular strain typing, to determine whether vaginal relapse or re-infection occurred. The possible role of antifungal resistance in VVC was also investigated.

## Methods

## STUDY POPULATION

A cohort of 121 premenopausal women attending the department of genitourinary medicine at Leeds General Infirmary with signs and symptoms of acute VVC were recruited into the study. Women who were less than 16 years of age, diabetic, HIV positive, or pregnant were excluded. Informed consent was obtained from the patient before entry. All patients underwent a full screen for sexually transmitted infections, including syphilis, gonorrhoea, chlamydia, *Trichomonas vaginalis*, and bacterial vaginosis and women with any of these infections were excluded. The initial diagnosis of VVC was made on clinical grounds. The examining doctor completed a questionnaire detailing age, history of similar episodes, medical history, contraceptives used, any medication taken, and symptoms and signs at presentation. A conventional high vaginal swab (HVS) and a rectal swab were taken from each woman, together with a 10 ml vaginal washing using sterile water. The women were treated with a single 500 mg clotrimazole pessary and asked to re-attend 1, 4, and 12 weeks after treatment, or if their symptoms recurred. The women were asked about symptoms, signs were recorded, and HVS and vaginal washings were repeated at each visit.

**Mycology Reference Centre, University of Leeds and General Infirmary, Leeds, UK**  
S S El-Din  
H R Ashbee  
R C Barton  
E G V Evans

**Department of Genito-urinary Medicine**  
M T Reynolds

Correspondence to:  
Dr Ruth Ashbee, Mycology Reference Centre, Division of Microbiology, University of Leeds and General Infirmary, Leeds LS2 9JT, UK  
h.r.ashbee@leeds.ac.uk

Accepted for publication  
11 January 2001

Table 1 Relation between symptoms and culture results in 121 women at their initial visit

Variable	Total n=121 (%)	Culture positive n=78 (%)	Culture negative n=43 (%)	p Value
History				
OCP	53 (43.8)	30 (56.6)	23 (43.4)	0.16 (NS)
HSE	86 (71.1)	58 (67.4)	35 (40.7)	
Symptoms				
Itching	97 (80.2)	68 (70.1)	29 (29.9)	0.009
Soreness	78 (64.5)	56 (71.8)	22 (28.2)	0.023
Discharge	78 (64.5)	50 (64.1)	28 (35.9)	1.0 (NS)
Dysuria	6 (5.0)	3 (50.0)	3 (50.0)	0.747 (NS)
Dyspareunia	2 (1.6)	1 (50.0)	1 (50.0)	0.667 (NS)

OCP = oral contraceptive pill.  
HSE = history of similar episodes.

#### SAMPLE COLLECTION AND PROCESSING

Conventional HVS and rectal swabs were collected and plated onto Sabouraud agar, before incubation at 37°C for 48 hours. Vaginal washings were collected by introducing 10 ml of sterile water into the vagina using a quill attached to a syringe. The washings were then re-aspirated into the syringe and transferred to a sterile Universal container. Each sample was serially diluted so that the number of viable colonies could subsequently be quantified. The neat washings and each dilution (0.1 ml volumes) were plated onto Sabouraud agar and incubated at 37°C for 48 hours. The number of colonies that grew was recorded and the results expressed as colony forming units (CFU) per ml of wash fluid.

Rectal and vaginal isolates were identified as *Candida albicans* on the basis of the germ tube test<sup>15</sup> and the production of chlamydo-spores on Czapek Dox medium. Germ tube negative isolates were further identified using Auxocolor kits (Sanofi Pasteur, France). Five yeast colonies from each positive vaginal or rectal specimen were preserved using the Protect system (Technical Services Ltd, Heywood, UK) and kept at -70°C.

#### TYPING OF CANDIDA ISOLATES

##### DNA extraction

The method was adapted from Scherer and Stevens.<sup>16</sup> Five yeast colonies from the vaginal washings and five yeast colonies from the rectal swab taken at the initial visit were inoculated onto separate Sabouraud agar plates and incubated for 48 hours. Five yeast colonies from vaginal washings were similarly cultured from each subsequent visit, if positive cultures were obtained. DNA was then extracted from each of these isolates.

##### Digestion and electrophoresis of DNA

The extracted DNA was digested using a specific restriction enzyme (EcoRI). The samples were then subjected to gel electrophoresis to separate the fragments into specific bands according to size.

##### Southern blotting and hybridisation

The electrophoresed DNA was blotted from the gel onto a nylon membrane, according to the method of Southern<sup>16</sup> and identified by hybridisation with a Ca3 probe.<sup>17</sup>

#### ANTIFUNGAL SUSCEPTIBILITY TESTING

Antifungal susceptibility testing was performed by the broth microdilution method according

to the National Committee for Clinical Laboratory Standards M27-A method.<sup>18</sup> The antifungal agents used were clotrimazole (CTZ; Sigma) and fluconazole (FCZ; kindly provided by Pfizer, UK). The antifungal agents were tested at concentrations ranging from 64–0.125 mg/l. The minimum inhibitory concentration (MIC) was assessed visually and defined as the concentration of antifungal that resulted in an 80% inhibition of growth of the test strain. For fluconazole, isolates with MICs less than or equal to 8 mg/l were defined as “sensitive,” 16–32 mg/l as “susceptible dependent on dose,” and 64 mg/l or greater as “resistant.” For clotrimazole, isolates with MICs less than or equal to 1 mg/l were defined as sensitive, 2–8 mg/l as susceptible dependent on dose, and 16 mg/l or greater as resistant.

#### DATA ANALYSIS

The questionnaires were analysed using SPSS for Windows. Associations of *Candida* culture results with signs and symptoms were identified by bivariate analysis using the  $\chi^2$  test, Pearson coefficient, and the p value calculated. Gels were analysed using the method of Schmid *et al*<sup>19</sup> for DNA fingerprinting, calculation of similarity coefficient ( $S_{AB}$ ), and histogram and dendrogram genesis. Ca3 hybridisation patterns of five colonies per isolate were analysed for band position only in the size range of 2.25–19 kb and the results stored in the Dendron database. This constructs histograms and dendrograms by the unweighted pair group method.  $S_{AB}$ s were recorded for each pair of strains from the linear list of the matrix coefficient, rather than branching points, as it is more accurate. In this study, the cut-off points for strain relatedness were lowered compared to other studies using this probe, as the band intensity was not included in the analysis, and because Dendron analysis only involved bands lower than 7.9 kb. Genetically identical isolates were defined to have  $S_{AB}$ s > 0.96, genetically similar but not identical isolates had  $S_{AB}$ s in the range 0.96–0.85, and genetically unrelated isolates had  $S_{AB}$ s < 0.85.

## Results

#### STUDY POPULATION

A total of 121 women were recruited to the study. The women had a mean age of 26 years (range 19–53 years). All had symptoms and signs suggestive of VVC, but only 78 of them (65%) had positive *Candida* cultures at the initial visit. Table 1 shows the relation between symptoms and culture results in the study population at the initial visit.

#### MICROBIOLOGY RESULTS AT THE INITIAL VISIT

Of the 78 women who had culture positive vaginal washings, *C albicans* was isolated from 75, *C glabrata* from two, and *C tropicalis* from one. Rectal swabs were positive for *Candida* in 80 women, of whom 67 had concomitant initial positive vaginal washings. Again, *C albicans* was the commonest species isolated from rectal swabs (n=78), followed by *C glabrata* (n=1) and *Saccharomyces cerevisiae* (n=1). The patient with *C glabrata* isolated from the rectal swab

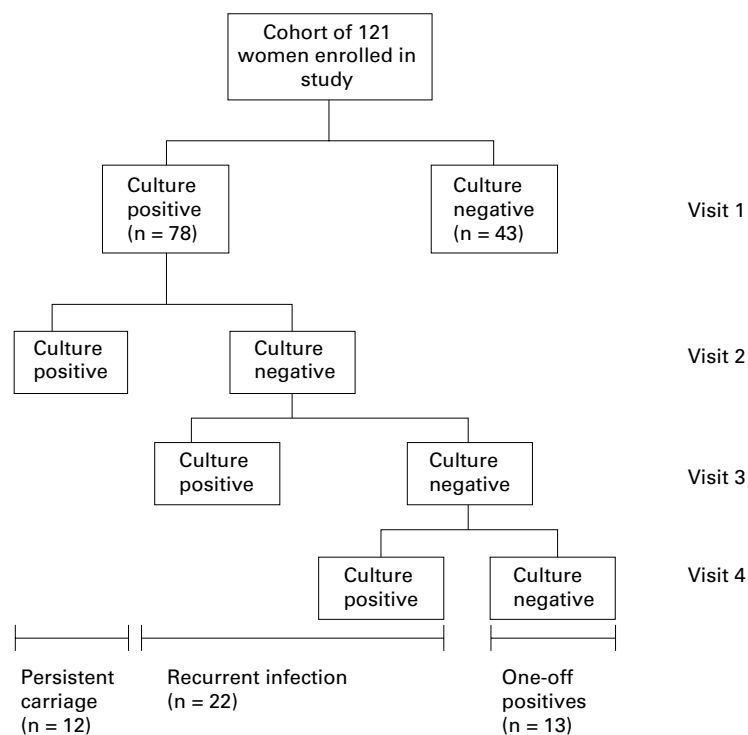


Figure 1 Classification of women in the study according to *Candida* culture results.

Table 2 Mean  $\log_{10}$  viable count of *Candida* in women with persistent symptomatic or asymptomatic infection

	Mean $\log_{10}$ viable <i>Candida</i> count (95% confidence limits)		p Value
	Visit 1	Visit 2	
Persistent carriage (n=12)			
Asymptomatic (n=9)	4.38 (0.59)	2.18 (0.98)	<0.05
Symptomatic (n=3)	4.31 (1.94)	3.06 (0.44)	NS

Data analysed by ANOVA.

also had *C. glabrata* in the vaginal washings. One patient with vaginal *C. glabrata* and one with vaginal *C. tropicalis* both had negative rectal cultures. The woman with the *S. cerevisiae* in the rectal swab had a negative vaginal culture.

The results for the HVS were broadly similar, with 72 of the 78 women with positive washings also having a positive HVS. In most cases, the results from the washings and HVS from the same woman were identical, but there were five women with positive washings and negative HVS and one woman with a positive HVS and negative washings.

#### CLINICAL OUTCOME

Of the 78 women who had positive vaginal washings at the initial visit, a total of 47 women completed the clinical study (either returned for four scheduled visits or experienced clinical recurrence) within the 3 month study period. These 47 women were classified into three groups according to their clinical outcome (fig 1):

- Thirteen women had an initial positive vaginal washing, but became and remained culture negative after therapy (one-off positives)
- Twelve women were culture positive at visit 2 despite therapy (persistent carriage)

- Twenty two women who were initially culture positive, became culture negative after therapy but again became culture positive, within the 12 week period (recurrent infection).

Of the 12 women with persistent carriage at 1 week post-treatment, nine were asymptomatic. Six of these nine women had a negative HVS, but positive vaginal washings on culture. Seven of the nine women continued to attend for follow up and seven subsequently developed symptoms requiring treatment.

#### VIABLE CANDIDA COUNTS AND RESPONSE TO TREATMENT

Viable *Candida* counts in vaginal washings taken at the initial visit were not predictive of clinical outcome. However, women with asymptomatic persistent infection had significantly lower viable *Candida* counts at visit 2 compared with visit 1 ( $p < 0.05$ ). In women with symptomatic persistent infection there was no significant difference between the counts at visits 1 and 2 (see table 2).

#### GENETIC RELATEDNESS BETWEEN VAGINAL AND RECTAL ISOLATES (PRETREATMENT)

Of the 66 women with positive cultures for *C. albicans* in both vagina and rectum, 52 had genetically identical isolates. In eight women the isolates were highly similar and in six they were unrelated.

#### GENETIC RELATEDNESS OF VAGINAL ISOLATES PRETREATMENT AND POST-TREATMENT

In women with recurrent infection,  $S_{AB}$  scores between primary and subsequent vaginal isolates ranged from 1.00 to 0.52. In 17 of the 22 women in the recurrent group, strain maintenance was seen, with 14 women having identical strains and three having highly similar strains. In the five remaining women, four had strain replacement and in one woman the *Candida* species changed from *C. albicans* to *C. glabrata*.

In the persistent carriage group, nine women had strain maintenance, two women had strain replacement, and in one patient the species of *Candida* isolated changed from *C. albicans* to *C. parapsilosis*. Figure 2 shows the Ca3 Southern blot hybridisation patterns of the *Candida* isolates from a patient who was culture positive at the initial visit as well as on the two subsequent visits (persistent carriage group). The blot demonstrates that strain maintenance was seen in this patient. Figure 3 shows the hybridisation patterns of isolates from two patients with recurrent infection; one illustrates strain maintenance and the other strain replacement.

#### ANTIFUNGAL SUSCEPTIBILITY TESTING

None of the isolates from the women in this study was resistant to fluconazole or clotrimazole (MIC ranges: 0.125–32 mg/l and 0.125–2 mg/l respectively). One post-treatment *C. albicans* isolate from a woman in the persistent group, was susceptible dependent on dose to fluconazole. Eight *C. albicans* isolates also

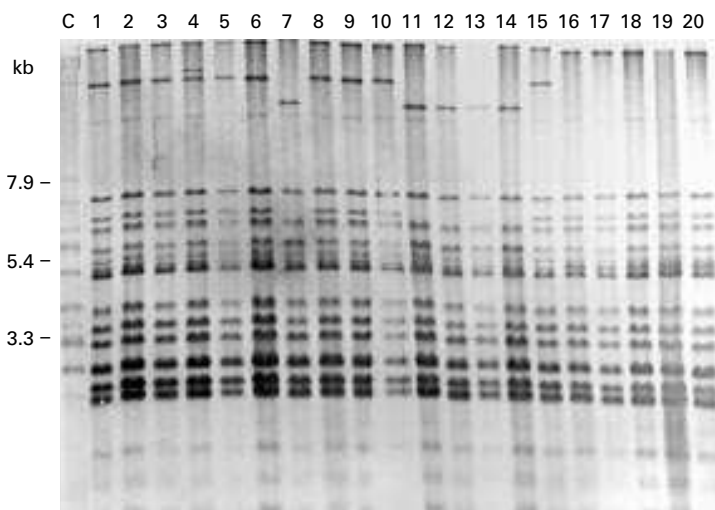


Figure 2 *Ca3* hybridisation patterns of isolates from a woman in the persistent carriage group. Lanes 1–5 represent vaginal isolates taken at visit 1 and lanes 6–10 represent rectal isolates from visit 1. Lanes 11–15 represent vaginal isolates obtained at visit 2 when the patient was asymptomatic. Ten weeks after her initial visit, the patient again developed symptoms. Lanes 16–20 represent vaginal isolates obtained at this time. Strain maintenance occurred throughout with only minor variations in band pattern.

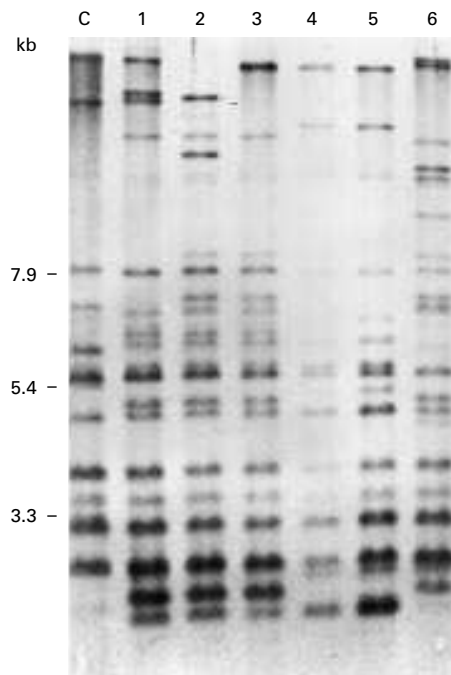


Figure 3 Southern blot hybridisation pattern of isolates from two women in the recurrent positive group. Lane C is a reference *Candida albicans* isolate. Lanes 1–3 illustrate strain maintenance in one patient. Lanes 1 and 2 represent the vaginal and rectal isolates respectively, obtained at the initial visit. Lane 3 represents the vaginal isolate obtained during the recurrent episode. Lanes 4–6 illustrate strain replacement in another woman. Lanes 4 and 5 represent vaginal and rectal isolates obtained initially. Lane 6 represents the vaginal isolate obtained during the recurrent episode.

showed susceptibility dependent on dose to clotrimazole, three of which came from the same patient in the persistent carriage group.

### Discussion

In this study, 121 women presented with symptoms suggesting acute vulvo-vaginal candidosis (VVC), yet only two thirds of them

were culture positive for *Candida* species. Vulval itching and soreness were the only symptoms predictive of a culture positive vaginal washing, but overall, symptoms were non-specific, confirming the findings of previous published studies that diagnosis on the basis of history alone is unreliable.<sup>20</sup>

Hopwood *et al*<sup>21</sup> found a positive relation between viable yeast counts and symptoms and signs of VVC. We wondered whether viable *Candida* counts in vaginal washings taken at the initial visit would be predictive of the clinical outcome, but our results showed no association. However, in women with persistent infection after initial treatment, those who had higher viable *Candida* counts were more likely to be symptomatic.

*C. albicans* was by far the commonest isolate from both vagina and rectum (96% of vaginal isolates and 98% of rectal isolates). These results are consistent with our previous observation<sup>22</sup> that there has been no increase in the incidence of non-*albicans* strains among women attending the genitourinary medicine clinic in Leeds since the introduction of “over the counter” antifungals.

Work in vitro has shown that the sensitivity of swabs as a sampling method for yeasts is low.<sup>3</sup> In the laboratory, swabs will only yield positive cultures if they have been placed in a suspension containing at least  $10^3$  viable organisms per ml. This study highlighted the discrepancy between culture results from HVS and vaginal washings. Of the 12 women with persistent carriage of yeast 1 week after treatment, half were culture negative by HVS, but positive by vaginal washings. Nine of the 12 women with persistent carriage in this study were asymptomatic; seven of them continued to attend and subsequently developed symptoms requiring re-treatment. Thus, in clinical practice some women treated for “recurrent infection” on the basis of HVS results may in fact have incomplete eradication of yeasts after treatment and should therefore be classed as persistent carriers.

The analysis of the genetic relatedness of vaginal isolates pretreatment and post-treatment demonstrated genotypic strain maintenance in the majority of women (77% of women in the recurrent group and 75% of those in the persistent carriage group). There have been a number of other studies that have confirmed the genetic similarity of *Candida* species isolated during recurrent episodes of VVC (RVVC).<sup>13 14 23</sup> However, these studies only examined isolates obtained during symptomatic recurrence. Only a few studies have included specimens taken between symptomatic episodes, and have included very small numbers of patients. For example, Stein *et al*<sup>24</sup> studied four women with RVVC, taking samples 1, 7, and 30 days after the treatment. Three had symptomatic recurrences with the same strain of *C. albicans* as was initially isolated from the vagina. Soll *et al*<sup>25</sup> took repeated samples from various body sites in a single patient and found that strain maintenance occurred during three episodes of vaginal infection. A study examining chemoprophylaxis in women

with RVVC included a larger number of women and vaginal samples were also taken between symptomatic recurrences.<sup>4</sup> In this study, nearly half the women had strain replacement or a change of *Candida* species at the first symptomatic recurrence. However, as all the patients were receiving ketoconazole prophylaxis, this may have exerted a selective pressure encouraging the emergence of different strains or species of *Candida*.

In summary, our findings support the "vaginal relapse" hypothesis in women with RVVC and have important implications for the treatment of women with recurrent symptoms. We chose a single clotrimazole pessary (500 mg) as treatment because this is the cheapest antifungal treatment available over the counter and is also frequently prescribed by general practitioners. Despite widespread usage of antifungal drugs, we and others have found no evidence of resistance to either fluconazole or clotrimazole in immunocompetent patients with recurrent infection or persistent carriage of *Candida*.<sup>22 26 27</sup> As antifungal resistance does not seem to be a problem in the general population, it may be appropriate to use more prolonged courses of antifungal treatment in women with RVVC in order to increase the chances of complete eradication of yeasts. One possible approach is an extended course of oral antifungals initially followed by regular prophylaxis, say once or twice monthly, with either vaginal pessaries or systemic therapy.

Funding for this project is gratefully acknowledged from the Special Trustees Research Scheme, Leeds Teaching Hospitals Trust.

*Contributors:* SSE-D carried out the practical work associated with the project and contributed to the manuscript; MTR was responsible for recruitment and examination of patients, clinical advice, and preparation of manuscript; HRA was responsible for day to day supervision of the work, involved with antifungal testing, and preparation of the manuscript; RCB provided detailed advice on molecular methods and interpretation of results and contributed to the manuscript; EGVE was responsible for devising project and overall management, advice, interpretation of results, and contributed to the manuscript.

- 1 Fidel PL, Sobel JD. Immunopathogenesis of recurrent vulvovaginal candidiasis. *Clin Microbiol Rev* 1996;9:335-48.
- 2 Sobel JD. Vaginitis and vaginal flora: controversies abound. *Curr Opin Infect Dis* 1996;9:42-7.
- 3 Odds FC. Genital candidosis. *Clin Exp Derm* 1982;7:345-54.
- 4 O'Connor MI, Sobel JD. Epidemiology of recurrent vulvovaginal candidiasis: identification and strain differentiation of *Candida albicans*. *J Infect Dis* 1986;154:358-63.
- 5 Meinhof WL. Demonstration of typical features of individual *Candida albicans* strains as a means of studying sources of infection. *Chemotherapy* 1982;28(Suppl 1):51-5.

- 6 Milne JD, Warnock DW. Effect of simultaneous oral and vaginal treatment on the rate of cure and relapse in vaginal candidosis. *Br J Vener Dis* 1979;55:362-5.
- 7 Vellupillai S, Thin RN. Treatment of vulvovaginal yeast infection with nystatin. *Practitioner* 1977;219:897-901.
- 8 Nystatin Multicentre Study Group. Therapy of candidal vaginitis: the effect of eliminating intestinal *Candida*. *Am J Obstet Gynecol* 1986;155:651-5.
- 9 Spinillo A, Carratta L, Pizzoli G, et al. Recurrent vaginal candidiasis. Results of a cohort study of sexual transmission and intestinal reservoir. *J Reprod Med* 1992;37:343-7.
- 10 Bisschop MPJM, Merkus JWMM, Scheygrond H, et al. Co treatment of the male partner in vaginal candidosis: a double blind randomised control study. *Br J Obstet Gynaecol* 1986;93:79-81.
- 11 Buch A, Christensen ES. Treatment of vaginal candidosis with natamycin and effect of treating the partner at the same time. *Acta Obstet Gynecol Scand* 1982;61:393-6.
- 12 Calderon-Marquez JJ. Itraconazole in the treatment of vaginal candidosis and the effect of treatment on the sexual partner. *Rev Infect Dis* 1987;9(Suppl 1):143-5.
- 13 Lockhart SR, Reed BD, Piersn CL, et al. Most frequent scenario for recurrent *Candida* vaginitis is strain maintenance with "substrain shuffling": demonstration by sequential DNA fingerprinting with probes Ca3, C1 and CARE2. *J Clin Microbiol* 1996;34:767-77.
- 14 Vazquez JA, Sobel JD, Demitriou R, et al. Karyotyping of *Candida albicans* isolates obtained longitudinally in women with recurrent vulvovaginal candidiasis. *J Infect Dis* 1994;170:1566-9.
- 15 Taschdjian CL, Burchall JJ, Kozinn PJ. Rapid identification of *Candida albicans* by filamentation on serum substitutes. *Am J Dis Child* 1960;99:212-15.
- 16 Southern EM. Detection of specific sequences of DNA fragments separated by gel electrophoresis. *J Mol Biol* 1975;98:503-17.
- 17 Scherer S, Stevens DA. Application of DNA typing methods to epidemiology and taxonomy of *Candida* species. *J Clin Micro* 1987;25:675-9.
- 18 National Committee for Clinical Laboratory Standards. Reference method for broth dilution antifungal susceptibility testing of yeasts; approved standard. Wayne, Pennsylvania: National Committee for Clinical Laboratory Standards, 1997.
- 19 Schmid J, Voss E, Soll DR. Computer-assisted methods for assessing strain relatedness in *Candida albicans* by fingerprinting with the moderately repetitive sequence Ca3. *J Clin Microbiol* 1990;28:1236-43.
- 20 Kinghorn GR. Vulvovaginal candidosis. *J Antimicrobiol Chemother* 1991;28(Suppl A):59-66.
- 21 Hopwood V, Crowley T, Horrocks CT, et al. Vaginal candidosis: relation between yeast counts and symptoms and clinical signs in non-pregnant women. *Genitourin Med* 1988;64:331-4.
- 22 Walker PP, Reynolds MT, Ashbee HR, et al. Vaginal yeasts in the era of "over the counter" antifungals. *Sex Transm Inf* 2000;76:437-8.
- 23 Mercure S, Poirier S, Lemay G, et al. Application of biotyping and DNA typing of *Candida albicans* to the epidemiology of recurrent vulvovaginal candidiasis. *J Infect Dis* 1993; 168:502-7.
- 24 Stein GE, Sheridan VL, Magee BB, et al. Use of rDNA restriction fragment length polymorphisms to differentiate strains of *Candida albicans* in women with vulvovaginal candidiasis. *Diagn Microbiol Infect Dis* 1991;14:459-64.
- 25 Soll DR, Galask R, Isley S, et al. Switching of *Candida albicans* during successive episodes of recurrent vaginitis. *J Clin Microbiol* 1989;27:681-90.
- 26 Fong IW, Bannatyne RM, Wong P. Lack of in vitro resistance of *Candida albicans* to ketoconazole, itraconazole and clotrimazole in women treated for recurrent vaginal candidiasis. *Genitourin Med* 1993;69:44-6.
- 27 Lynch ME, Sobel JD, Fidel PL. Role of antifungal drug resistance in the pathogenesis of recurrent vulvovaginal candidiasis. *J Med Vet Mycol* 1996;34:337-9.