



Deposited via The University of Sheffield.

White Rose Research Online URL for this paper:

<https://eprints.whiterose.ac.uk/id/eprint/24/>

Article:

Harris, Paul A., Lamb, Justin, Heaton, Brian et al. (2002) Possible attenuation of the G2 DNA damage cell cycle checkpoint in HeLa cells by extremely low frequency (ELF) electromagnetic fields. *Cancer Cell International*, 2 (3). ISSN: 1475-2867

<https://doi.org/10.1186/1475-2867-2-3>

Reuse

Items deposited in White Rose Research Online are protected by copyright, with all rights reserved unless indicated otherwise. They may be downloaded and/or printed for private study, or other acts as permitted by national copyright laws. The publisher or other rights holders may allow further reproduction and re-use of the full text version. This is indicated by the licence information on the White Rose Research Online record for the item.

Takedown

If you consider content in White Rose Research Online to be in breach of UK law, please notify us by emailing eprints@whiterose.ac.uk including the URL of the record and the reason for the withdrawal request.

Primary research

Possible attenuation of the G2 DNA damage cell cycle checkpoint in HeLa cells by extremely low frequency (ELF) electromagnetic fields

Paul A Harris*¹, Justin Lamb², Brian Heaton³ and Denys N Wheatley⁴

Address: ¹Section of Surgery, Division of Clinical Sciences (University of Sheffield), Clinical Sciences Centre, Northern General Hospital, Herries Road, Sheffield, S5 7AU, UK, ²Department of Adult Oncology, Dana Farber Cancer Institute, 44 Binney Street, Boston, MA 02115, USA, ³Department of BioMedical Physics and BioEngineering, University Medical Buildings, Foresterhill, Aberdeen AB25 2ZD, UK and ⁴Department of Cell Pathology, University of Aberdeen, MacRobert Building, 581 King Street, Aberdeen AB24 5UA, UK

E-mail: Paul A Harris* - p.a.harris@sheffield.ac.uk; Justin Lamb - justin_lamb@dfci.harvard.edu; Brian Heaton - b.heaton@abdn.ac.uk; Denys N Wheatley - wheatley@abdn.ac.uk

*Corresponding author

Published: 7 May 2002

Received: 28 February 2002

Cancer Cell International 2002, **2**:3

Accepted: 7 May 2002

This article is available from: <http://www.cancerci.com/content/2/1/3>

© 2002 Harris et al; licensee BioMed Central Ltd. Verbatim copying and redistribution of this article are permitted in any medium for any purpose, provided this notice is preserved along with the article's original URL.

Abstract

Background: The issue remains unresolved as to whether low frequency magnetic fields can affect cell behaviour, with the possibility that they may be in part responsible for the increased incidence of leukaemia in parts of the population exposed to them.

Methods: Combined treatment of HeLa cells with gamma-irradiation (1, 3 and 5 Grays) and extra low frequency magnetic fields of ~50 Hz was carried out under rigorously controlled conditions.

Results: Synchronised cells progressing from S-phase arrived at mitosis on average marginally ahead of irradiation controls not exposed to ELF. In no instance out of a total of twenty separate experiments did this "double-insult" further delay entry of cells into mitosis, as had been anticipated.

Conclusion: This apparently "non-genotoxic" agent (ELF) appears to be capable of affecting cells that would normally arrest for longer in G2, suggesting a weakening of the stringency of the late cycle (G2) checkpoint.

Introduction

Some epidemiological studies purport to show a relationship between cancer incidence and environmental exposure to extremely low frequency (ELF) electromagnetic fields (EMFs) [1,2]. Others have failed to find a correlation [3,4], and Campion [5] and more recently Park [6] have concluded that any association is probably far too tenuous and insignificant to warrant further investigation. The inability of laboratory studies to provide convincing

evidence that ELF fields can alter cells seems to support such a view. Negative evidence proves little, and despite such statements, a nagging concern that some as yet unexplained ability of ELF-EMFs to modify cellular processes, such as implied by the enhancement ("promotion"?) of leukemogenesis in man. Without some clear endpoint to measure, few have known where to begin in a systematic laboratory approach, which is made worse by the lack of a tangible hypothesis.

Ionising radiation is undoubtedly associated with carcinogenesis, since it is known to increase the rate of genetic mutation and thus the incidence of cellular defects leading to the emergence of malignant phenotypes. Environmental exposure to ELF-EMFs is reputedly far too weak to cause genetic damage [7] and *in vitro* assays of mutagenicity have been negative [8]. However, since not all carcinogens have to be genotoxic, it is possible that some agents participate indirectly in the induction of genetic changes required to bring about carcinogenesis. The spontaneous gene mutation rate in human cells is high and mechanisms operate which repair these errors, thereby reducing genomic instability, with the incidence of cancer being orders of magnitude higher in their absence [9]. Damaged cells can either engage a programmed cell death pathway, effectively committing suicide [10,11], or arrest in cycle until the damage is repaired during the "time-out" response to the so-called DNA damage cell cycle checkpoints [12,13]. While both mechanisms help maintain genomic stability, they themselves are targets for non-genotoxic carcinogens.

Of the two main checkpoints, the one in G1 largely prevents duplication of genetic errors, whilst the one in G2 stops cells entering mitosis with damaged chromosomes. Loss of checkpoint stringency is a feature of oncogenic transformation [14,15]; the gene encoding the p53 tumour suppressor that plays such a pivotal role in the G1 DNA damage checkpoint is mutated in >50% of human cancers [16], with inactivation of the protein itself by association with viral oncoproteins accounting for many others. Indeed, p53 knock-out mice spontaneously develop a high frequency of tumours [17,18] due to failure in G1 arrest following DNA damage [19,20], with a resultant predisposition to gene amplification and genetic instability [21,22]. Conversely, if "proliferative impetus" is maintained when cells should have arrested in their cycle because of reduced checkpoint stringency, this may lead to the propagation of either somatic or induced mutations, which is a hypothetical mechanism for non-genotoxic carcinogenicity.

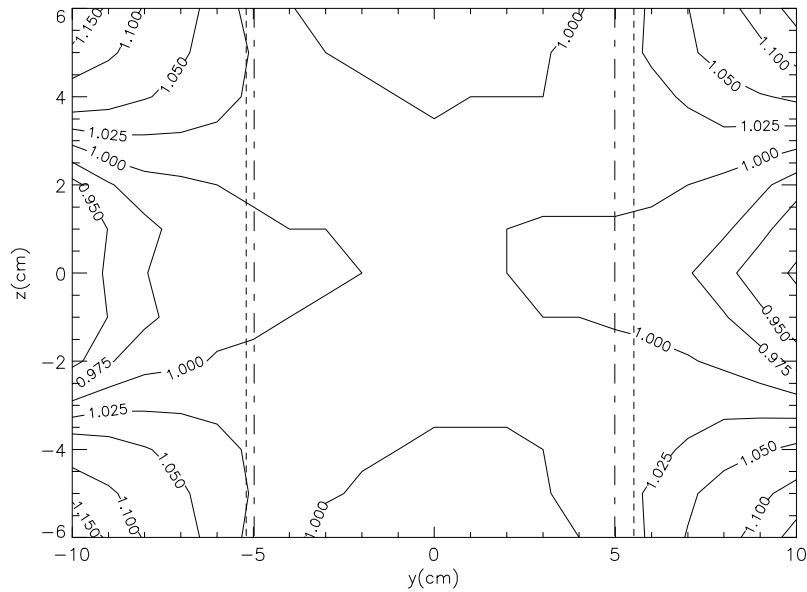
Table 1: Statistics applied to flow cytometry data

Exposure Category	Dose (Gy)	Statistical test	Sample Size (n)	Significance (p)
1 & 2	0	Wilcoxon matched pairs	22	ns
3 & 4	1	"	13	0.05
3 & 4	3	"	25	0.01
3 & 4	5	"	8	0.05
3 & 4	5	Student's t-test	4	0.05
3 & 4	1, 3 & 5	Wilcoxon matched pairs	20	0.01

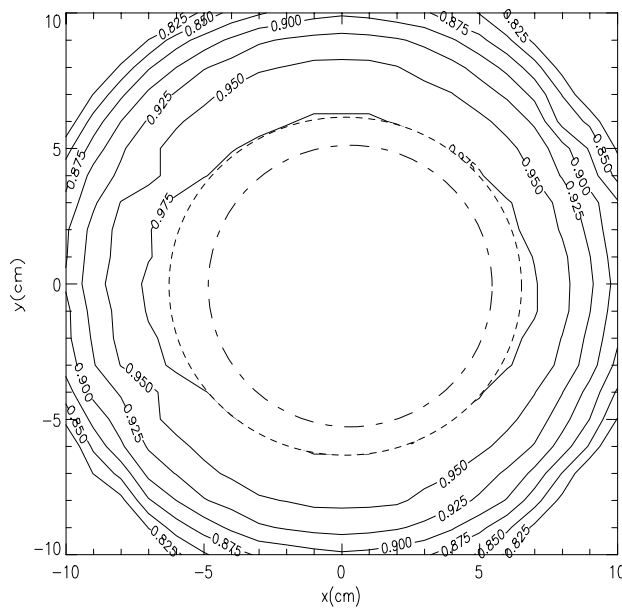
Table 2: Perpendicular components of background time-varying and static magnetic fields measured at location of sample holders

Component of System	Active (Yes/No)	Time-Varying Field	Static Field
coils A,B	no	3nT	50.3 μ T
coils C,D	no	3nT	45.6 μ T
Amplifier and Signal Generator	no		
coils A,B	no	3nT	
coils C,D	no	3nT	
Amplifier and Signal Generator	yes		
coils A,B	yes	2mT*	
coils C,D	no	0.38 μ T*	
Amplifier and Signal Generator	yes		

* With alternate Helmholtz pairs active the background time-varying field in the non-active coils was found to be 0.38 μ T.



A



B

Figure 1

A : Magnetic field distribution in the vertical plane; (- - - -) represents the boundary of the $\pm 2.5\%$ cylindrical uniform magnetic field; (- - -) represents the boundary of the sample holder. B: Magnetic field distribution in the horizontal plane demonstrating cylindrical symmetry; (- - - -) represents the boundary of the $\pm 2.5\%$ cylindrical uniform magnetic field; (- - -) represents the boundary of the sample holder.

Extensive cell proliferation studies that we have carried out over nearly 5 years have yielded only negative results when cells have been exposed to 50 Hz, 2mT magnetic fields for up to 72 h, i.e. no discernible effect of the fields. In agreement with the majority of published results, studies on the growth-related enzyme, ornithine decarboxylase, in murine L929 fibroblasts show it was unaffected [[23], and unpublished data], contrary to the findings of Litowitz et al. [24]. However, when cells were subjected to a mild thermal stress (39°C) at the same time as being exposed to 50 Hz magnetic fields for up to 72 h, a small *increase* in the rate of proliferation was noted compared to cultures subjected to only the small rise in temperature [23]. This effect was seen for magnetic field intensities ranging from 100 μ T to 2mT and suggests that cell proliferation/behaviour could be modified by ELF fields in cells already responding to another environmental stress. Two previous reports have explored a similar approach. Hintenlang [25] found an increase in near tetraploid chromosome complements in human lymphocytes irradiated with doses of up to 4Gy from a ^{137}Cs source which were subsequently cultured in 60 Hz magnetic fields of up to 1.4mT, providing evidence that cellular mechanisms of radiation damaged cells could be modulated. And Rosenthal and Obe [26] found a significant increase in the frequency of sister chromatid exchanges in human lymphocytes pre-treated with antineoplastic drugs and subsequently cultured in a 5mT 50 Hz field, which is highly relevant to our finding (see Discussion). We surmised that a double insult would further delay the entry of irradiated cells into division in synchronized HeLa cultures when an ELF magnetic field was also applied.

Results and discussion

ELF EMFs and premitotic delay following genotoxic stress

HeLa cells are demonstrably deficient in the G1 DNA damage cell cycle checkpoint [27] due to PHV E6 inactivation of p53 [29,30], allowing the effect of magnetic field exposure on the stringency of the G2 DNA damage checkpoint to be analysed in isolation. The G2 block is a universal cell response to DNA damaging agents [31–34], showing that this checkpoint is susceptible to partial loss of stringency rather than complete inactivation. Cells released from double thymidine block were irradiated 4 h later in mid-S phase with 1, 3 or 5 Grays of gamma radiation. These levels might be considered high in these studies, but were chosen after preliminary experiments were done because they produced the most consistent delays in the entry of cells into mitosis. Once irradiated, the incubation was continued with or without continuous incident magnetic fields, and the appearance of post-mitotic G1 cells was monitored by flow cytometry at various times up to a maximum of 24 h (field characteristics shown in Fig 1; see Material and Methods section).

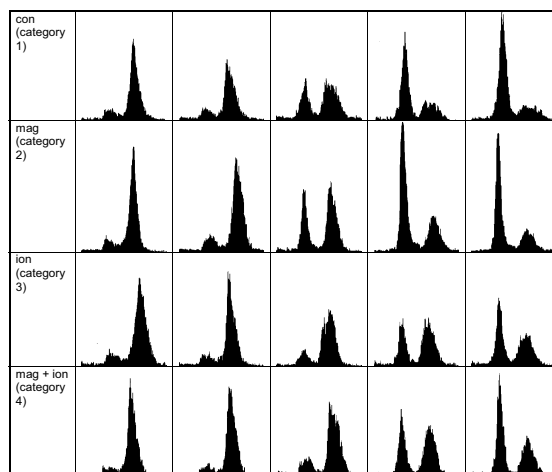


Figure 2

Flow cytometry histograms of synchronised HeLa S3 cells. From left to right the histograms correspond to 7.5, 9, 10.5, 11.5 and 13 h after release of the second thymidine block. Categories 3 and 4 have been irradiated with a dose of 1 Gy in early S-phase.

Figures 2 to 8 show the results as determined by flow cytometry. Cells released from the double thymidine block at time-zero that had not been exposed to gamma-radiation (Group 1) completed mitosis on schedule within 12 h [27]. The magnetic fields of 2mT (Group 2) had no effect on their progression into division. Gamma-irradiated cells slowly regained their ability to enter and complete M-phase, but were considerably delayed compared to Groups 1 and 2, as seen in the subsequent 24 h follow-up period (Group 3).

Irradiated cells that were also incubated in the presence of a 2mT magnetic field (Group 4) similarly showed a considerable delay in progressing through mitosis. However, decomposition of the flow-cytometry histograms suggests that the cells were entering G1 earlier than their matched controls (Group 3), which would only be consistent with a *reduced* G2 checkpoint stringency. Further, this effect was more prominent with increasing doses of gamma radiation. Out of a total of over 20 experiments, 80% showed this effect; equally noteworthy is that in no experiment was the reverse seen. Table 1 gives the statistical analysis showing the significant difference between Groups 3 and 4.

Further comments

ELF-EMFs of environmentally significant field strengths (\sim 2mT) shortens the pre-mitotic delay following DNA damage in HeLa cell cultures prevented from reaching mi-

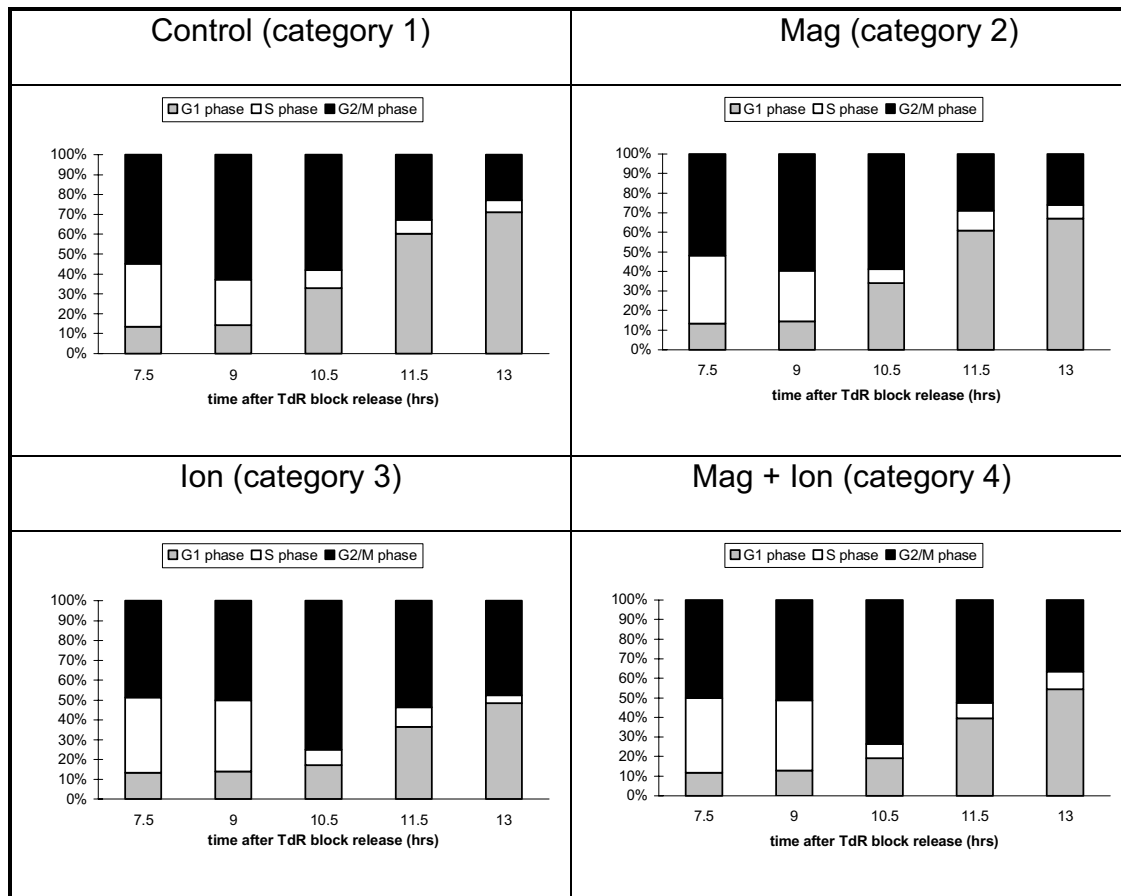


Figure 3
 Bar charts illustrating the proportion of cells at different stages in the cell cycle derived from the decomposition of flow cytometry histograms. Irradiated cells have been given 1 Gy in early S-phase.

tosis on schedule by gamma-irradiation. Since EMF treatment alone lacked any discernible effect, it is clear from this work, as in our previous studies, that biological systems like this have to be rendered exquisitely sensitive to environmental agents before any discernible effect of an agency such as ELF-EMFs might be detected. In human populations at risk to leukemia, irrespective of the causative agent or the genetic disposition of the individuals to this disorder, a low but consistent frequency of cancer itself indicates that the system is delicately poised, and

hence the influences of a non-genotoxic agent, such as ELF-EMFs, could operate by compromising the late cycle checkpoint under these circumstances. Such an effect might well be "felt" in a population in which the background incidence of cancer in the most susceptible early age-groups was low, even with an apparent doubling in the incidence of the disease. Furthermore, if attenuation of the G2 checkpoint can be implicated as one possibility, by inference it follows that the same is probably true of attenuation of the other major cell cycle checkpoint in G1

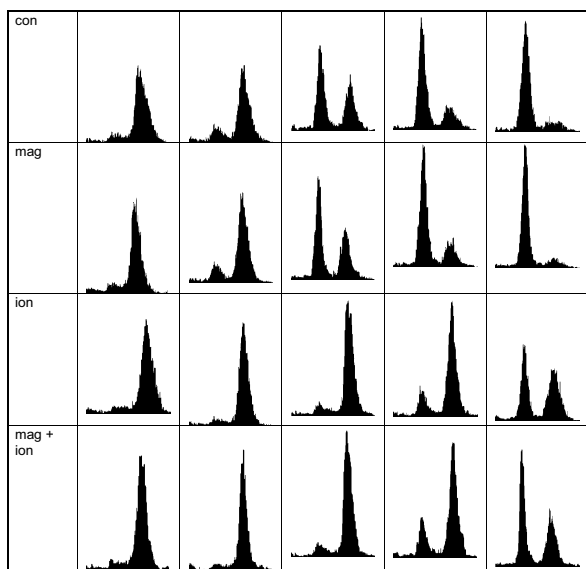


Figure 4

Flow cytometry histograms of synchronised HeLa S3 cells. From left to right the histograms correspond to 7.5, 9, 10.5, 11.5 and 13 h after release of the second thymidine block. Categories 3 and 4 have been irradiated with a dose of 3 Gy in late S/early G₂ phase.

(the R or Restriction Point), shown to be exacerbated by the action of non-genotoxic agents such as phenobarbital by Gonzales et al. [35]. This has in fact been proposed as the primary mechanism of this drug's well-recognised effect on carcinogenesis. Thus deficiencies in crucial cell cycle control mechanisms allow the propagation of genetic defects and contribute to the increased genetic instability leading to cancer. These observations therefore define a novel and *plausible* mechanism by which ELF-EMFs might also be included as a non-genotoxic carcinogen. Despite the "artificiality" of our test system and the levels of these agencies being considerably above those that might be encountered in nature, the very fact that delay in mitosis is not exacerbated by a double insult, but in general is *reduced*, has obvious implications which cannot be ignored, even if these findings are in no way directly translatable into possible environmental reasons for increased "genotoxic"/carcinogenic sequelae.

To date we have no explanation as to how these EMFs might alter pre-mitotic activity at the molecular level. Previous data on the effects of ELF in synchronised *Tetrahymena* cell cultures seemed to indicate the initially expected extra delay caused by a second insult. However, these organisms are exceedingly sensitive to heat and a 1.6°C rise in temperature in the active coil delivering ELFs was found to be responsible [36]. We have circumvented this prob-

lem here by introducing fans that stabilise the temperatures within the active and inactive coils at exactly the same level within the hot room, and allow us to adjust down the room temperature should it rise to an unacceptable level. But the involvement of a very small heat-shock is much less likely to affect mammalian cells, many of which have a growth optimum of ~38.5°C. Since the usual outcome of raised temperatures is an exacerbation of any additional physical or chemical insult on the cells, ELF once again seems to be doing the very opposite in our experiments by *reducing* rather than further protracting the inevitable delay due to irradiation. In brief, the differences between Groups 3 and 4 cannot be attributed to temperature asymmetry.

We surmised that cyclin B/p34^{cdc2} kinase activity would show no difference between Groups 1 and 2, indicating that ELFs alone do not increase kinase activity. The G₂/M transition is catalysed by cyclin-dependent kinase (cdk) (p34^{cdc2}) [37], activity of which is principally regulated by association with cyclin B [38] and a series of phosphorylation/ dephosphorylation reactions [39,40]. In Groups 3 and 4 we had initially expected a drop in kinase activity following irradiation followed by a steady rise with time as the delay elapsed and cells prepared for division. But in three all experiments performed, we found that Group 4 kinase activity, assayed by a modification of the method of Matsushima et al. [41], rose above that in Group 3 at an earlier time (6 h), commensurate with a faster transit into division. However, these experiments did not show statistically significant elevations in each case, hence more conclusive results cannot be reached until further work is done. However, it can be reported that in no instance has the cyclin kinase activity of ELF-exposed cells lagged behind the sham-exposed controls in either the X-irradiated or non-X-irradiated groups. An increase in cyclin B phosphorylation would be commensurate with a *shortening* in ELF-EMF treated cells of the G₂ delay, and would confirm the otherwise seemingly counterintuitive finding to the expected further protraction of this period, and implicating magnetic field in reducing the stringency of the G₂ checkpoint.

Increase in cyclin B and/or cdk1 expression demonstrably accelerates G₂ progression, and clearly more exacting work now needs to be done on gene expression under these conditions, with emphasis on expression of the mRNA of these proteins. The absence of an observable effect upon unirradiated cultures implicates the arrest-response mechanism itself (i.e. the damage sensor, the signal transduction pathway, cak inhibition, or whatever) as the primary site of action. While these processes remain relatively obscure, others have reported that magnetic fields can have profound effects upon a diverse group of cellular processes. Therefore interrogation of this control

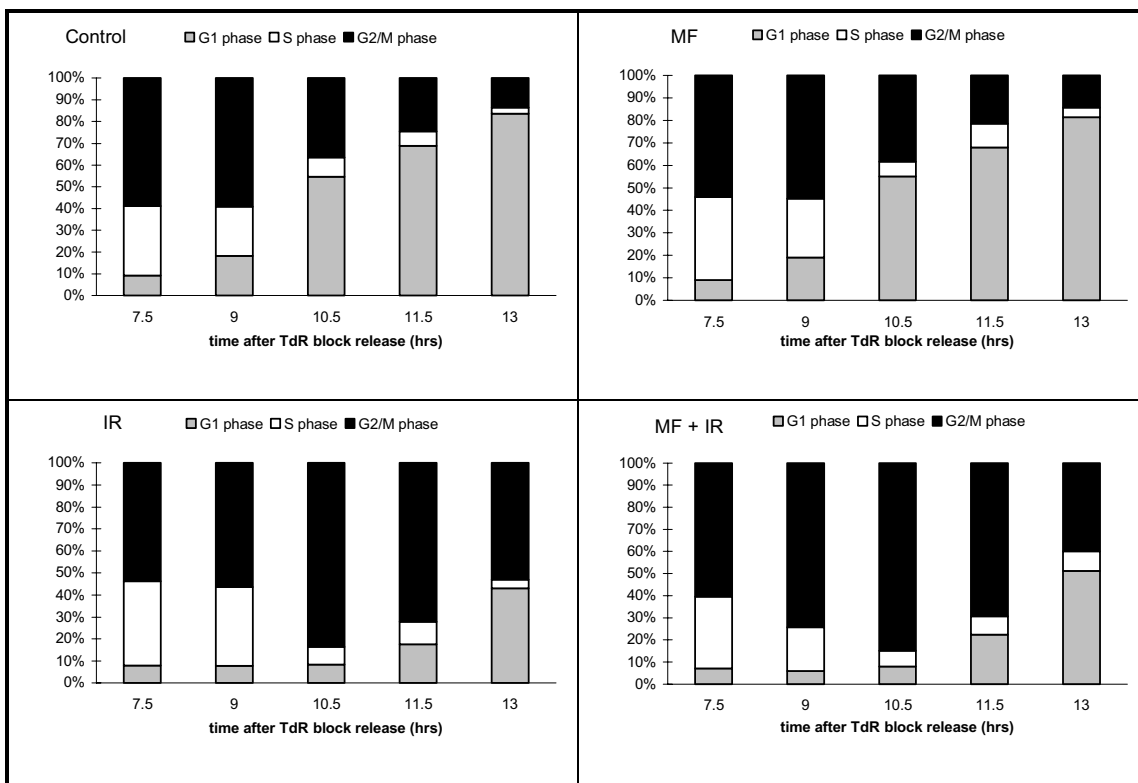


Figure 5

Bar charts illustrating the proportion of cells at different stages in the cell cycle derived from the decomposition of flow cytometry histograms. Irradiated cells have been given 3 Gy in late S/early G₂ phase.

complex and its suspected modulation by ELF is an important focus for future work. At present it is unlikely that these studies can be repeated and extended to test our hypothesis, unless more serious attention is paid to its implication.

We also concede that at present these time-consuming experiments have allowed us little opportunity to explore more comprehensively doses levels and different treatment schedules using the two agencies. Also agencies other than gamma-irradiation need to be carefully considered. Nevertheless, we believe that our data demonstrates *for the first time* an unanticipated effect of ELF on a cellular response to incipient injury. The hypothesis that ELF might be capable of exacerbating an inherent or induced genetic instability by reducing or attenuating the

stringency of the late-cycle (G₂) checkpoint, allowing cells to progress into and sometimes through mitosis before pre-mitotic inflicted damage has been adequately repaired, may well be testable in other more sensitive ways and within other systems.

We concede, however, that we have not demonstrated that ELF increases the incidence of cellular transformation. Indeed, our cell system – which already exhibits a highly deranged malignant phenotype – might be considered a far less acceptable cell type than normal phenotypes which have been chosen for such demonstrations in other cell systems [24,36]. Equally, the absence of a functional G₁ DNA damage control and the lowered stringency of the G₂ checkpoint in HeLa cells (although the relative "intactness" of the G₂ checkpoint cannot be disputed since these

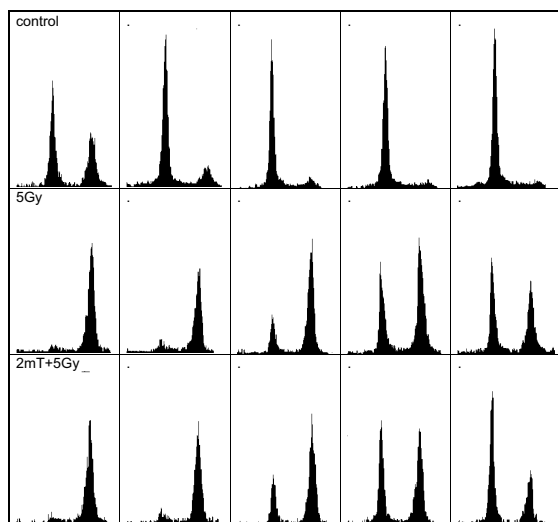


Figure 6
Flow cytometry histograms of synchronised HeLa S3 cells. From left to right the histograms correspond to 9.5, 11, 12.5, 13.5 and 15 h after release of the second thymidine block. Categories 3 and 4 have been irradiated with a dose of 5 Gy in early S-phase.

cells nevertheless arrest pre-mitotically following any disturbance in their preparation for division) may also have influenced the responses observed. While we feel that cells of normal phenotype may prove superior "models" in future work, it can be argued that work on transformed cells is still relevant because ELF might require some predisposition of cells (or some point of inherent/ induced genetic instability) which becomes further unbalanced and gives an abnormal response sooner than otherwise expected, and from which aberrant subclones of a more anaplastic nature arise. Thus the recent work of Still et al. [42] on Jurkat cells, which are highly sensitive to their environmental conditions, may itself be a valid approach, although in this latest study these authors saw no clear difference between Ca^{2+} -dependent gene expression in exposed cells which might have arisen from previously reported changes in intracellular free Ca^{2+} levels [43].

Materials and Methods

Cell culture and synchronisation

Mycoplasma-negative human cervical epithelial carcinoma (HeLa) cells, certified as this cell type, as required by the UKCCCR guidelines, were cultured in DMEM (4.5 g l⁻¹ modification) supplemented with 10% calf serum, 80 µg ml⁻¹ streptomycin and 100 units ml⁻¹ penicillin at 37°C in a humidified 5% CO₂ atmosphere. Cells were synchronised at the G1/S boundary by double thymidine block, as in our previous studies [27].

Magnetic fields

Cells were cultured in a 50 Hz, 2mT root mean squared electromagnetic field applied perpendicular to the cell monolayers and generated with a Helmholtz configuration of coils. Two Helmholtz pairs were used so that samples could be either exposed to an applied magnetic field or sham exposed, i.e. identical environmental conditions but without magnetic field exposure. The homogeneity of the field in the coils is shown in Fig. 1A and 1B. Measurement of the magnetic field conditions, including both time-varying and static fields, was made using a search coil type sensor and a Bartington's MAG-03MC Fluxgate Magnetic Field Sensor. Both had calibrations traceable to national standards. Measurements of the perpendicular components of the background time-varying fields and the static fields are shown in Table 2.

Cell cultures were housed in two hermetically sealed, cylindrical perspex flasks commensurate with the $\pm 2.5\%$ uniform volume exhibited by the Helmholtz pairs (see legend to Figure 1A and 1B). Sealable openings were used to provide a 5% CO₂ in air atmosphere and allow insertion of a temperature probe. Temperature control was achieved by housing the exposure systems in a 37°C hot-room and using an in-line duct fan to provide a fast air flow (maximum 460 m³ h⁻¹) directly on to the flasks by use of ventilation ducting and a suitable Y-tube connector. Temperature differences between the two flasks were kept to within $\pm 0.1^\circ\text{C}$.

Exposure conditions of cell cultures

For the purpose of investigating whether ELF magnetic fields can modulate post-irradiation G₂ checkpoint function cell cultures were subjected to one of four environmental conditions hereafter referred to as categories 1 to 4. For the flow cytometry experiments cultures were grown in 30 mm diameter dishes and were subjected to the exposure in the Groups shown below immediately following release of a double thymidine block:

Group 1 Cultures grown under normal conditions, i.e. 37°C in a 5% CO₂/air atmosphere.

Group 2 As for Group 1 but continuously exposed to a 2mT, 50 Hz magnetic field with a perpendicular orientation relative to the cell monolayer.

Group 3 Irradiated using a ¹³⁷Cs source in the range 1–5 Gy. Subsequently cultured as Group 1.

Group 4 Irradiated with ¹³⁷Cs and then immediately and continuously exposed to a 2mT, 50 Hz magnetic field with a perpendicular orientation relative to the cell monolayer.

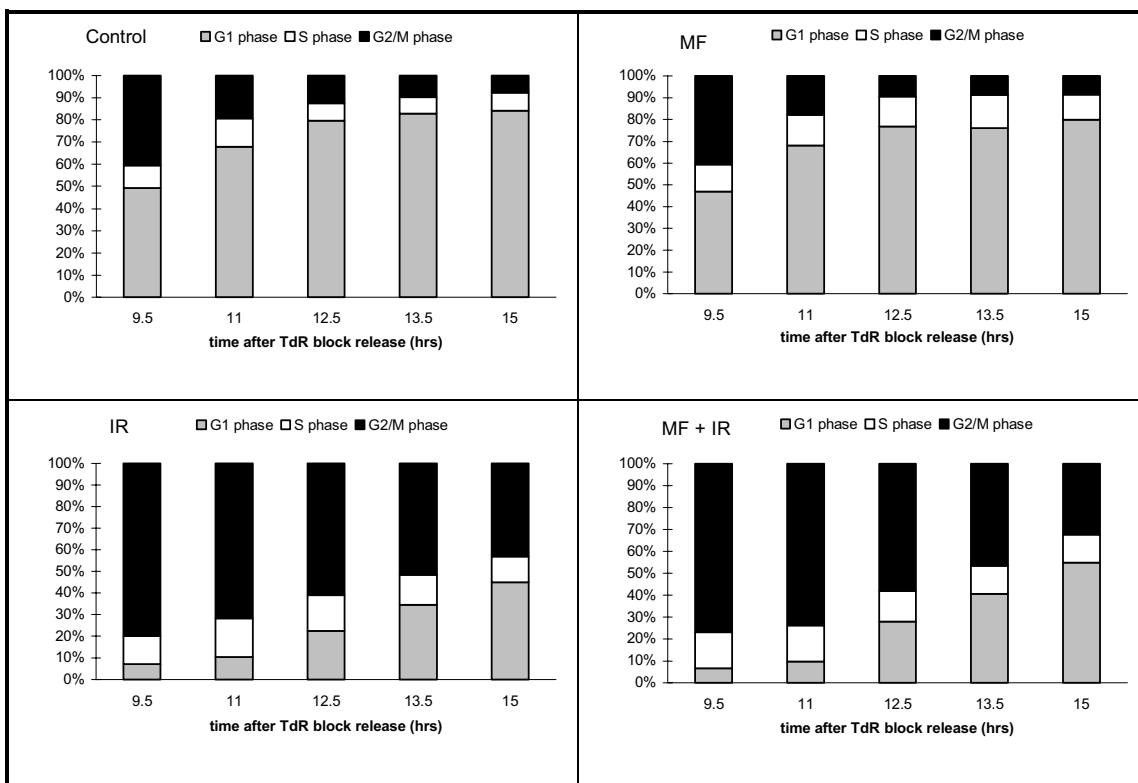


Figure 7

Bar charts illustrating the proportion of cells at different stages in the cell cycle derived from the decomposition of flow cytometry histograms. Irradiated cells have been given 5 Gy in early S-phase

The ^{137}Cs irradiator was housed in a separate building resulting in a transit time of approximately 20 min before cultures were back in the hot room. Except for the time in the gamma-irradiation source, the cultures were kept in a polystyrene box with 37°C water bottles to maintain their temperature.

Flow cytometry

Nuclei were isolated and stained with propidium iodide [28]. Nuclear fluorescence (DNA content) was recorded for each cell of doublet discriminated populations with a Coulter EPICS Profile II machine. Not less than 10,000 nuclei were processed per sample. Cell cycle phases were obtained by decomposition of the frequency histograms

by the half-peak reflection method, using an algorithm in "Cytologic" software (Coulter Electronics).

Abbreviations

ODC, ornithine decarboxylase; HPV, human papillomavirus; HEPES, N-2-hydroxyethylpiperazine-N'-2-ethanesulphonic acid; EDTA, ethylenediaminetetraacetic acid; EGTA, ethyleneglycol-bis (β -aminoethylether)-N,N,N',N'-tetraacetic acid; DTT, dithiothreitol; PMSF, phenylmethylsulphonyl fluoride.

Acknowledgements

PAH held a Medical Research Council Studentship and JL a Caledonian Research Foundation Scholarship during this course of this work. We also wish to thank the many people who offered their careful and useful critical comments of these studies and the manuscript prior to submission.

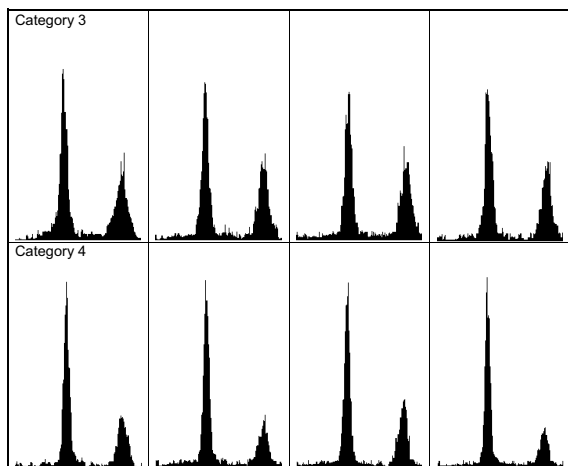


Figure 8

Flow cytometry histograms of synchronised HeLa S3 cells corresponding to categories 3 and 4. Each row corresponds to cultures irradiated with 5 Gy and assessed for nuclear DNA content approximately 13 h after release of the second thymidine block.

References

- Wertheimer N, Leeper E: **Electrical wiring configurations and childhood cancer.** *Amer J Epidemiol* 1979, **109**:273-284
- Feychting M, Ahlbom A: **Magnetic fields and cancer in children residing near Swedish high-voltage power lines.** *Amer J Epidemiol* 1993, **138**:467-481
- Verkasalo PK, Pukkula E, Hongisto MY, Valjas JE, Heikkilä KV, Koskenvuo M: **Risk of cancer in Finnish children living close to power lines.** *Brit Med J* 1993, **307**:895-899
- Linet MS, Hatch EE, Kleinerman RA, Robison LL, Kaune WT, Friedman DR, Severson RK, Haines CM, Hartsock CT, Niwa S, Wacholder S, Tarone RE: **Residential exposure to magnetic fields and acute lymphoblastic leukemia in children.** *New Eng J Med* 1997, **337**:1-7
- Campion EW: **Power lines, cancer, and fear.** *New Eng J Med* 1997, **337**:44-45
- Park RL: **Currents of Fear.** In "Voodoo science; the road from foolishness to fraud". Oxford University Press, Oxford 2000, 140-161
- Adair RK: **Constraints on biological weak effects of weak ELF electromagnetic fields.** *Physical Rev* 1991, **43**:1039-1040
- Murphy JC, Kaden DA, Warren J, Sivak A: **Power frequency electric and magnetic fields: a review of genetic toxicology.** *Mutat Res* 1993, **296**:221-240
- Lane DP: **p53, guardian of the genome.** *Nature* 1992, **358**:15-16
- Williams GT: **Programmed cell death: Apoptosis and oncogenesis.** *Cell* 1991, **65**:1097-1098
- Harrington EA, Fanidi A, Evan GI: **Oncogenes and cell death.** *Curr Opin Genet Dev* 1994, **4**:129
- Murray A: **Cell cycle checkpoints.** *Curr Opin Cell Biol* 1994, **6**:872-876
- Elledge SJ: **Cell cycle checkpoints: preventing an identity crisis.** *Science* 1996, **274**:1664-1672
- Hartwell LH: **Defects in a cell cycle checkpoint may be responsible for the genomic instability of cancer cells.** *Cell* 1992, **71**:543-546
- Weinert TA, Lydall D: **Cell cycle checkpoints, genetic instability and cancer.** *Semin Cancer Biol* 1993, **4**:129-140
- Hollstein M, Rice K, Greenblatt MS, Soussi T, Fuchs R, Sorlie T, Hovig E, Smith-Sorensen B, Montesano R, Harris CC: **Database of p53 gene somatic mutations in human tumors and cell lines.** *Nucleic Acids Res* 1994, **22**:3551-3555
- Donehower LA, Harvey M, Slagle BL, McArthur MJ, Montgomery CA, Butel JS, Bradley A: **Mice deficient for p53 are developmentally normal but susceptible to spontaneous tumours.** *Nature* 1992, **356**:215-221
- Harvey M, McArthur MJ, Montgomery CA, Butel JS, Bradley A, Donehower LA: **Spontaneous and carcinogen induced tumorigenesis in p53-deficient mice.** *Nature Genet* 1993, **5**:225-229
- Kastan MB, Onyekwere O, Sidransky D, Vogelstein B, Craig RW: **Participation of p53 protein in the cellular response to DNA damage.** *Cancer Res* 1991, **51**:6304-6311
- Kuerbitz SJ, Plunkett BS, Walsh WV, Kastan MB: **Wild-type p53 is a cell cycle checkpoint determinant following irradiation.** *Proc Natl Acad Sci USA* 1992, **89**:7491-7495
- Livingstone LR, White A, Spouse J, Livanos E, Jacks T, Tlsty TD: **Altered cell cycle arrest and gene amplification potential accompany loss of wild-type p53.** *Cell* 1992, **70**:923-935
- Yin Y, Tainsky MA, Bischoff FZ, Strong LC, Wahl GM: **Wild-type p53 restores cell cycle control and inhibits gene amplification in cells with mutant p53 alleles.** *Cell* 1992, **70**:937-948
- Harris PA: **Biological effects of extremely low frequency magnetic fields.** PhD Thesis; University of Aberdeen. 1999
- Litovitz TA, Krause D, Mullins JM: **Effect of coherence time of the the applied magnetic field on ornithine decarboxylase activity.** *Biochem Biophys Res Comm* 1991, **178**:862-865
- Hintenlang DE: **Synergistic effects of ionising radiation and 60 Hz magnetic fields.** *Bioelectromagnetics* 1993, **14**:545-551
- Rosenthal M, Obe G: **Effects of 50 Hz electromagnetic fields on proliferation and on chromosomal alterations in human peripheral lymphocytes untreated or pretreated with chemical mutagens.** *Mutat Res* 1989, **210**:329-335
- Lamb J, Wheatley DN: **Cell killing by the novel imidazoacridinone antineoplastic agent, C-is inhibited at high concentrations coincident with dose-differentiated cell cycle perturbation.** *Br J Cancer* 1311, **74**:1359-1368
- Vindeløv LL, Christensen IJ, Nissen NI: **A detergent-trypsin method for the preparation of nuclei for flow cytometric DNA analysis.** *Cytometry* 1983, **3**:323-327
- Scheffner M, Werness BA, Huibregtse JM, Levine AJ, Howley PM: **The E6 oncoprotein encoded by human papillomavirus types 16 and 18 promotes the degradation of p53.** *Cell* 1990, **63**:1129-1136
- Hwang E-S, Naeger LK, DiMaio D: **Activation of the endogenous p53 growth inhibitory pathway in HeLa cervical carcinoma cells by expression of the bovine papillomavirus E2 gene.** *Oncogene* 1996, **12**:795-803
- Kimler BF, Schneiderman MH, Leeper DB: **Induction of concentration-dependent blockade in the G2 phase of the cell cycle by cancer chemotherapeutic agents.** *Cancer Res* 1978, **38**:809-814
- Konopa J: **G2 block induced by DNA crosslinking agents and its possible consequences.** *Biochem Pharmacol* 1988, **37**:2303-2309
- Lock RB, Ross WE: **Inhibition of p34cdc2 kinase activity by etoposide or irradiation as a mechanism of G2 arrest in Chinese hamster ovary cells.** *Cancer Res* 1990, **50**:3761-3766
- Sørensen CM, Eastman A: **Mechanism of cis-diamminedichloroplatinum(II)-induced cytotoxicity: role of G2 arrest and DNA double-strand breaks.** *Cancer Res* 1988, **48**:4484-4488
- Gonzales AJ, Goldsworthy TL, Fox TR: **The non-genotoxic chemical carcinogen phenobarbital delays G1 checkpoint response in B6C3F1 mouse hepatocytes.** In: *Keystone Symposium on 'Growth Control'*, Keystone CO, USA. 1997
- McCallum HM: **Biological and health effects associated with some non-ionising radiations.** PhD Thesis, University of Aberdeen. 1994
- Norbury C, Nurse P: **Animal cell cycles and their control.** *Annu Rev Biochem* 1992, **61**:441-470
- Pines J, Hunter T: **Isolation of a human cyclin cDNA: evidence for cyclin mRNA and protein regulation in the cell cycle and for interaction with p34cdc2.** *Cell* 1989, **58**:833-846
- Draetta G, Beach D: **Activation of cdc2 protein kinase during mitosis in human cells: cell cycle-dependent phosphorylation and subunit rearrangement.** *Cell* 1988, **54**:17-26
- Morgan DO: **Principles of CDK regulation.** *Nature* 1995, **374**:131-134

41. Matsushime H, Quelle DE, Shurtleff SA, Shibuya M, Sherr CJ, Kato J-Y: **D-type cyclin-dependent kinase activity in mammalian cells.** *Mol Cell Biol* 1994, **14**:2066-2076
42. Still M, Linström E, Ekstrand AJ, Mild KH, Mattsson M-O, Lundgren E: **Inability of 50 Hz magnetic fields to regulate PKC and Ca²⁺-dependent gene expression in Jurkat cells.** *Cell Biol Internat* 2002, **26**:203-2098([doi:10.1006/cbir.2001.0837](https://doi.org/10.1006/cbir.2001.0837))
43. Linström E, Linström P, Berglund A, Mild KH, Lundgren E: **Intracellular calcium oscillations induced in a T cell line by a weak 50 Hz magnetic field.** *J Cell Physiol* 1993, **156**:395-398

Publish with **BioMed Central** and every scientist can read your work free of charge

"BioMedcentral will be the most significant development for disseminating the results of biomedical research in our lifetime."

Paul Nurse, Director-General, Imperial Cancer Research Fund

Publish with **BMC** and your research papers will be:

- available free of charge to the entire biomedical community
- peer reviewed and published immediately upon acceptance
- cited in PubMed and archived on PubMed Central
- yours - you keep the copyright

Submit your manuscript here:

<http://www.biomedcentral.com/manuscript/>

 **BioMedcentral.com**

editorial@biomedcentral.com