



Deposited via The University of Sheffield.

White Rose Research Online URL for this paper:

<https://eprints.whiterose.ac.uk/id/eprint/222000/>

Version: Published Version

Article:

Njeri, A., Harrison, C.M., Kharb, P. et al. (2025) The quasar feedback survey: zooming into the origin of radio emission with e-MERLIN. *Monthly Notices of the Royal Astronomical Society*, 537 (2). pp. 705-722. ISSN: 0035-8711

<https://doi.org/10.1093/mnras/staf020>

Reuse

This article is distributed under the terms of the Creative Commons Attribution (CC BY) licence. This licence allows you to distribute, remix, tweak, and build upon the work, even commercially, as long as you credit the authors for the original work. More information and the full terms of the licence here:

<https://creativecommons.org/licenses/>

Takedown

If you consider content in White Rose Research Online to be in breach of UK law, please notify us by emailing eprints@whiterose.ac.uk including the URL of the record and the reason for the withdrawal request.

The Quasar Feedback Survey: zooming into the origin of radio emission with *e*-MERLIN

Ann Njeri ¹★, Chris M. Harrison ¹★, Preeti Kharb ², Robert Beswick³, Gabriela Calistro-Rivera,^{4,5} Chiara Circosta,⁶ Vincenzo Mainieri,⁵ Stephen Molyneux,⁷ James Mullaney⁸ and Silpa Sasikumar⁹

¹*School of Mathematics, Statistics and Physics, Newcastle University, Newcastle upon Tyne NE1 7RU, UK*

²*National Centre for Radio Astrophysics (NCRA) – Tata Institute of Fundamental Research (TIFR), S. P. Pune University Campus, Post Bag 3, Ganeshkhind, 411007 Pune, India*

³*Jodrell Bank Centre for Astrophysics, School of Physics and Astronomy, The University of Manchester, Alan Turing Building, Oxford Road, Manchester M13 9PL, UK*

⁴*German Aerospace Center (DLR), Institute of Communications and Navigation, Münchener Straße 20, D- 82234 Weßling, Germany*

⁵*European Southern Observatory (ESO), Karl-Schwarzschild-Straße 2, D-85748 Garching bei München, Germany*

⁶*ESA, European Space Astronomy Centre (ESAC), Camino Bajo del Castillo s/n, E-28692 Villanueva de la Cañada, Madrid, Spain*

⁷*School of Physics and Astronomy, University of Southampton, Southampton SO17 1BJ, UK*

⁸*The School of Mathematical and Physical Sciences, University of Sheffield, Sheffield S3 7RH, UK*

⁹*Departamento de Astronomía, Universidad de Concepción, Concepción, Chile*

Accepted 2024 December 24. Received 2024 December 19; in original form 2024 November 8

ABSTRACT

We present 6 GHz *e*-MERLIN observations of 42 $z < 0.2$ type 1 and type 2 mostly radio-quiet quasars ($L_{\text{[O III]}} \gtrsim 10^{42}$ erg s⁻¹; $L_{\text{AGN}} \gtrsim 10^{45}$ erg s⁻¹) from the Quasar Feedback Survey. The nature and origin of radio emission in these types of sources is typically ambiguous based on all-sky, low-resolution surveys. With *e*-MERLIN, we investigate radio emission on sub-kiloparsec scales ($\sim 10\text{s}–100\text{s pc}$). We find 37/42 quasars are detected, with a diversity of radio morphologies, including compact cores, knots, and extended jet-like structures, with sizes of 30–540 pc. Based on morphology and brightness temperature, we classify 76 per cent of the quasars as radio-AGN, compared to the ~ 57 per cent identified as radio-AGN at the $\sim 1–60$ kpc scales probed in prior studies. Combining results from *e*-MERLIN and the Very Large Array, 86 per cent reveal a radio-AGN. On average, ~ 60 per cent of the total radio flux is resolved away in the *e*-MERLIN maps, and is likely dominated by jet-driven lobes and outflow-driven shocks. We find no significant differences in measured radio properties between type 1 and type 2 quasars, and estimate sub-relativistic jet speeds of $\sim 0.2–0.3c$ and modest jet powers of $P_{\text{jet}} \approx \times 10^{43}$ erg s⁻¹ for the few targets, where these measurements were possible. These quasars share characteristics with compact radio-selected populations, and the global radio emission likely traces strong interactions between the AGN (jets/outflows) and their host galaxy ISM from 10s parsec to 10s kiloparsec scales.

Key words: techniques: high angular resolution – galaxies: active – galaxies: evolution – quasars: general – quasars: supermassive black holes – radio continuum: galaxies.

1 INTRODUCTION

For galaxy evolution models and simulations to fully explain the properties of massive galaxies, active galactic nuclei (AGNs) are required to inject energy into their environments. This produces a ‘feedback’ process, which re-distributes baryons and regulates galaxy growth (e.g. Bower et al. 2006; Hirschmann et al. 2014; Henriques et al. 2015; Schaye et al. 2015; Choi et al. 2018; Pillepich et al. 2018; reviews in e.g. Cattaneo et al. 2009; Fabian 2012; Heckman & Best 2014; King & Pounds 2015; Harrison 2017; Saikia 2022; Harrison & Ramos Almeida 2024). However, the

role of powerful ‘radiatively dominated’ AGN (i.e. quasars with $L_{\text{AGN}} \gtrsim 10^{45}$ erg s⁻¹) remains controversial from both theoretical and observational perspective. There is an ongoing debate around the most important mechanism of energy injection from these sources (i.e. jets, accretion-disc winds or direct radiation pressure on the host galaxy gas) and to what level they can have an appreciable impact on galaxy evolution (e.g. Cresci & Maiolino 2018; Wylezalek & Morganti 2018; Harrison & Ramos Almeida 2024).

Observations show that understanding the origin of radio emission in typical quasar host galaxies is a key piece of the AGN feedback puzzle. For example, intriguing trends between radio emission, dust reddenning, and/or the prevalence of outflows, have been presented throughout the literature for radiatively luminous AGNs (e.g. Mullaney et al. 2013; Villar Martín et al. 2014; Zakamska & Greene 2014; Hwang et al. 2018; Glikman et al. 2022; Fawcett et al. 2023;

* E-mail: ann.njeri@newcastle.ac.uk (AN); christopher.harrison@newcastle.ac.uk (CMH)

Calistro Rivera et al. 2024; Kukreti & Morganti 2024; Liao et al. 2024; Petley et al. 2024; although also see Rakshit & Woo 2018; Wang, Xu & Wei 2018). However, since most quasars have moderate radio luminosities (i.e. $\gtrsim 90$ percent with $L_{1.4\text{GHz}} \lesssim 10^{25} \text{ W Hz}^{-1}$; Zakamska et al. 2004) and have radio structures that are typically unresolved in all-sky surveys, it is often unclear what dominates the radio emission in this population. The primary candidates are: compact radio jets (i.e. \lesssim a few kiloparsec); shocks from AGN-driven outflows; star formation processes, and/or accretion disc coronal emission (Kellermann et al. 1994; Laor & Behar 2008; Condon et al. 2013; Mullaney et al. 2013; Padovani 2016; Behar et al. 2018; Panessa et al. 2019; Harrison & Ramos Almeida 2024). Indeed, at typical sub-mJy flux density levels of radio emission, only a small fraction of quasars are unambiguously identified as AGNs, with the bulk of their radio emission associated with either star formation (e.g. Herrera Ruiz et al. 2016; Kellermann et al. 2016) or both star formation and AGN processes (e.g. Silpa et al. 2020; Wang et al. 2023).

The most commonly observed radio morphology in large radio surveys are single compact objects (e.g. O’Dea & Baum 1997; Tadhunter 2016; Chiaraluce et al. 2019; Sabater et al. 2019; Fawcett et al. 2023). If AGN dominated, the compact nature of these objects may imply intense interaction with the interstellar medium (ISM) at parsec to a few kiloparsec scales, either through small-scale radio jets or shocks caused by outflows (launched by accretion disc winds, radiation pressure, or jets; e.g. Mullaney et al. 2013; Zakamska & Greene 2014; Bicknell et al. 2018; Mukherjee et al. 2018; Saikia 2022; Chen et al. 2024c; Harrison & Ramos Almeida 2024; Liao et al. 2024; Petley et al. 2024). Recent high resolution radio observations reveal a high prevalence of compact radio jet-like structures at sub-kiloparsec and parsec scales for lower radio luminosity AGNs and quasars (e.g. Hardcastle et al. 2019; Hardcastle & Croston 2020; Boccardi et al. 2021; Jarvis et al. 2021; McCaffrey et al. 2022; Njeri et al. 2023). Furthermore, studies of individual AGN-host galaxies, combining high resolution radio imaging with multiphase gas kinematics, reveal a common spatial connection between compact radio structures, covering a wide range of powers, and multiphase AGN-driven outflows (e.g. Rosario et al. 2010; Morganti et al. 2013; Riffel et al. 2014; Tadhunter et al. 2014; Husemann et al. 2019; Jarvis et al. 2019; Santoro et al. 2020; Venturi et al. 2021, 2023; Girdhar et al. 2022, 2024; Cresci et al. 2023; Holden et al. 2024; Speranza et al. 2024; Ulivi et al. 2024). This may all indicate a mechanism of AGN feedback acting in moderate radio power systems, as an alternative to that typically associated with the mechanical input caused by powerful relativistic radio jets on the largest spatial scales (e.g. Bridle & Perley 1984; Laing & Bridle 2015).

The Quasar Feedback Survey: Recent work has clearly shown the importance of studying radio emission to understand AGN feedback *across a wide range of radio powers*, with at least some of the radio emission tracing an ongoing interaction between the AGN and the host galaxy multiphase interstellar medium. None the less, key questions remain, including: how common is such an interaction for typical quasars? what is the efficiency of energy transfer from the AGN to the ISM?; what is the long-term impact on the host galaxies?; and what fraction of the radio emission can be associated with various processes (shocks, radio jets, and star formation). Towards addressing these outstanding questions, we are undertaking a systematic survey of low redshift $z < 0.2$ quasars. We have constructed a sample of 42 $z < 0.2$ quasars ($L_{\text{AGN}} > 10^{45} \text{ erg s}^{-1}$) selected on their [O III] luminosity, and which is dominated by typical ‘radio quiet’ AGNs (Jarvis et al. 2021). The low redshift sample makes it possible to study in high detail the physical interaction between the AGNs and

their host galaxies. Using a representative sample of quasars, the survey is designed to characterize the multiphase outflow properties and dominant outflow driving mechanisms (Harrison et al. 2014; Lansbury et al. 2018; Jarvis et al. 2019; Girdhar et al. 2022, 2024), assess the impact of the AGNs on the host galaxy properties (Jarvis et al. 2021; Molyneux et al. 2024) and to characterize the origin and properties of the radio emission (Jarvis et al. 2019, 2021; Silpa et al. 2022). The latter is the focus of this current study.

We have already obtained C band (6 GHz) and L band (1.4 GHz) Karl G. Jansky Very Large Array (VLA) observations of these 42 targets and produced radio maps down to a resolution of $\approx 0.3 \text{ arcsec}$ (i.e. $\sim 1 \text{ kpc}$; presented in Jarvis et al. 2019, 2021). Although we identified morphological radio structures, on $\gtrsim \text{kpc}$ scales, many of these structures were ambiguous in origin. For example, they were often not clearly collimated into jet-like structures and/or the majority of the flux was found to be located in unresolved/featureless nuclear regions, for which we were unable to distinguish between an AGN or star formation origin. To assess the properties of the radio emission on sub-kiloparsec scales, for this study, the 42 VLA quasars have been followed up with $\sim 6 \text{ GHz}$ observations on the enhanced Multi Element Remotely Linked Interferometer Network (*e*-MERLIN). *e*-MERLIN¹ is an array of seven radio telescopes spanning 217 km across Great Britain, making it possible to reach $\sim 50 \text{ mas}$ resolution at $\sim 6 \text{ GHz}$.

This paper is organized as follows. In Section 2, we describe the observations, imaging strategies, and data reduction. Section 3 presents the *e*-MERLIN results and analysis. Section 4 presents a discussion on the radio properties and likely origin of the radio emission, across our quasar sample. This includes information from the previous VLA observations and how the sample may be related to compact radio AGN populations in the literature. Our conclusions are presented in Section 5. In this paper, we adopt the Λ CDM cosmology parameters with $H_0 = 70.0 \text{ km s}^{-1} \text{ Mpc}^{-1}$ and $\Omega_m = 0.30$. In this cosmology, 50 mas (*e*-MERLIN resolution at $\sim 6 \text{ GHz}$), corresponds to 130 pc for the median redshift of the sample ($z = 0.15$). The spectral index, α uses the convention $S_\nu \propto \nu^\alpha$, where S_ν is the integrated flux density.

2 OBSERVATIONS AND DATA REDUCTION

2.1 Sample selection

A detailed sample description has already been presented in Jarvis et al. (2021) and so we only provide a brief description of the sample selection here. The 42 quasars in the Quasar Feedback Survey were selected from the Sloan Digital Sky Survey (SDSS) parent sample of ~ 24000 $z < 0.4$, spectroscopically identified AGN presented in Mullaney et al. (2013). Our sample selection was restricted to $z < 0.2$ with the highest AGN luminosities, using $L_{[\text{O III}]} > 10^{42.11} \text{ erg s}^{-1}$ and chosen to be dominated by moderate radio luminosities, using a cut of $L_{1.4\text{GHz}} > 10^{23.45} \text{ W Hz}^{-1}$. The radio luminosities are based on the flux densities from the NRAO VLA Sky Survey (NVSS; Condon et al. 1998), which were matched in Mullaney et al. (2013), and assuming a uniform spectral index of $\alpha = -0.7$. The final sample of 42 quasars, highlighted as stars and crosses in Fig. 1, was selected based on sky positions suitable for VLA scheduling, with right ascensions of $\text{RA} = 10^\circ - 300^\circ$ and a declinations of $\text{Dec} < 24^\circ$ or $\text{Dec} > 44^\circ$.

¹<https://www.e-merlin.ac.uk>

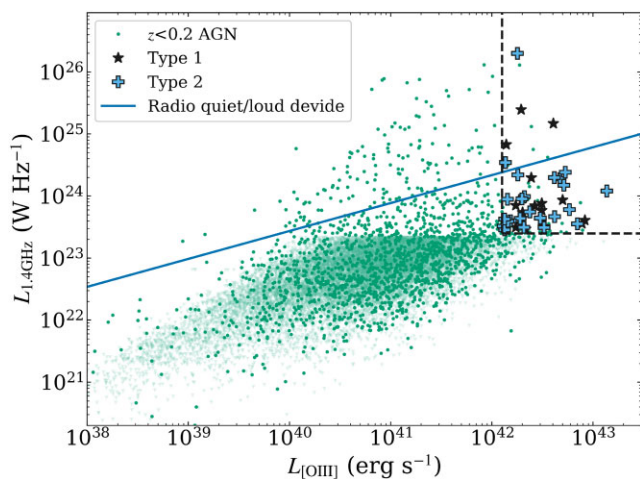


Figure 1. Total 1.4 GHz luminosity against [O III] for our sample of type 1 (star symbols) and type 2 (plus symbols) quasars. The dashed lines show the primary criteria used to select the sample from the parent sample of $z < 0.2$ AGNs from Mullaney et al. (2013) (circles, with upper limits shown as pale green triangles). The solid line marks the divide between ‘radio-loud’ and ‘radio-quiet’ following Xu, Livio & Baum (1999).

The sample is predominantly made up of sources classified as ‘radio-quiet’ (37/42), based on the [O III] luminosity and the radio luminosity division of Xu et al. (1999) (see Fig. 1 and column (6) in Table 1), with 37/42 (88 per cent) radio quiet sources and the rest radio loud. Furthermore, all but three of the targets have $L_{1.4\text{GHz}} < 10^{25} \text{ W Hz}^{-1}$. Based on the optical spectra, 25/42 sources are type 2 AGN and 17/42 are type 1 AGN.

2.2 *e*-MERLIN 6 GHz observations and imaging

Observations of the 42 quasars from Jarvis et al. (2021) were carried out with *e*-MERLIN (programme ID: CY11205), excluding the Lovell telescope, between 2019 June and 2022 March across 26 observation runs for a total of ~ 410 h. The total on-source integration time was ~ 350 h for the 42 targets, averaging to ~ 8 h per target. However, the total integration time per target was dependent on the minimum requested sensitivity, and therefore total integration time ranged from 4 to 12 h per target. The observation setup frequency was 6550–7060 MHz centred at ~ 6800 MHz with at total bandwidth of 512 MHz across 4 spectral windows (spws; at 128 MHz per spws). The data was recorded at an aggregate bit rate of 1024 Mbps with an integration time of 4 s and frequency resolution of 1.0 MHz per channel. The flux density calibrator, 3C286, was observed for ~ 40 min across each epoch. The 42 targets were observed for on-source scan length of 6 mins per scan and the complex antenna gains tracked using a phase reference calibrator (for each target) for 2 mins per scan, alternating between the target and the phase calibrator. For the bandpass calibrator, the source OQ 208 (1407 + 2827) was observed for ~ 30 min and was revisited every 4 h. The source OQ 208 was also used as the pointing calibrator in $\sim 1/3$ of the observation runs, otherwise the source 3C 84 (0319 + 4130) was used as the pointing and test calibrator.

The raw *uv*-data was imported from the *e*-MERLIN archives and processed using the *e*-MERLIN CASA pipeline. This is a PYTHON based CASA (v5.4+) package with standardized and optimized cal-

ibration parameters unique to *e*-MERLIN data.² Before calibration, any bad data including Radio Frequency Interference (RFI) was autoremoved by the pipeline. The source 1331 + 305 (3C286) was used as a flux calibrator across all the observation runs since it has a well-known source structure (Perley & Butler 2017). The pipeline uses the structural input model for 3C286 which is adjusted for the total flux density scaled to account for the shortest available projected *e*-MERLIN baseline in the observations. This flux scaling was then applied to the bandpass and pointing-test calibrators. Assuming little-to-no time variability, bandpass calibration only corrected for the variations in the channel sensitivity across each spectral window. The complex gain solutions derived from the bandpass calibrator were applied on the flux calibrator and the pointing-test calibrators. All the derived solutions, flux density, bandpass, and gain calibration were then applied across all the phase calibrators and targets in each run. Before imaging, any residual bad data and phase errors in the pipeline products were manually removed from the data.

The targets were imaged using the CASA TCLEAN task, where 2000×2000 maps with a cell size of 0.01 arcsecs per pixel were created for each target. To reduce phase and amplitude noise, between one to three rounds of self-calibration were performed on sources with flux density > 1 mJy.

Three weighting schemes were applied in the imaging: (1) natural weighting; (2) Briggs weighting with robust parameter $r = 0.5$; and (3) natural-weighted with *uv*-tapering applied at $4 M\lambda$. Applying *uv*-tapering to the data for the latter maps, helps to probe the more extended emission. Overall, the naturally weighted maps provide the maximum point source sensitivity, the Briggs weighted maps provide the highest spatial resolution, while the *uv*-tapered maps produce the maximum sensitivity for extended emission. The natural weighted maps have a typical rms of $\sim 20 \mu\text{Jy beam}^{-1}$, and a typical restoring beam $\sim 50 \times 30$ mas. The Briggs weighting provides the highest resolution with a restoring beam of $\sim 30 \times 10$ mas and a typical central rms of $\sim 50 \mu\text{Jy beam}^{-1}$, while the tapered maps provide a restoring beam size of $\sim 100 \times 80$ mas and a lower point source sensitivity with a typical central rms of $\sim 60 \mu\text{Jy beam}^{-1}$. The rms noise and restoring beam sizes/shapes vary across the sources depending on the exact exposure times, *uv* coverage, and level of self-calibration. All the *e*-MERLIN maps we produced (i.e. 3 maps for each of the 42 targets) are released with this work (see Data Availability section). Fig. 2, shows a set of the three *e*-MERLIN maps that were produced for one example target, with the equivalent figures for the rest of the targets provided in the Supplementary Material.³

As part of our discussion in this work, and to help with the identification/verification of features identified in the *e*-MERLIN maps, we make use of the VLA maps presented in Jarvis et al. (2021) of the same targets. Briefly, we utilize the *L*-band (~ 1.4 GHz) and *C*-band (~ 6 GHz) maps, both taken with the A-array configuration of the VLA, and imaged with Briggs weighting (robust parameter $r = 0.5$). The corresponding synthesized beams have major axis sizes of ~ 1 and ~ 0.3 arcsec, respectively. These VLA maps for an example target are shown in Fig. 2, with the equivalent figures for the whole sample presented in the Supplementary Material.

²See https://github.com/e-merlin/eMERLIN_CASA_pipeline for details.

³These are also available here: <https://doi.org/10.25405/data.ncl.27604872>

Table 1. The radio properties for the 42 Quasar Feedback Survey targets from *e*-MERLIN at 6 GHz.

Source ID	RA (J2000)	Dec. (J2000)	z	Linear size (pc)	Type	Flux (mJy)	Peak (mJy beam ⁻¹)	T _B (K)	L _{6GHz} (W Hz ⁻¹)	α _{core} (Jarvis + 21)	Radio morphology	Our class
(1)	(2)	(3)	(4)	(5)	(6)	(7)	(8)	(9)	(10)	(11)	(12)	(13)
J0749 + 4510	07:49:06.5077	+ 45:10:33.8758	0.192	<603.47**	1,RL	38.66±0.65	39.45±0.28	>1.6×10 ^{5**}	3.22 × 10 ²⁴	0.31±0.07	Compact	Radio-AGN
J0752 + 1935	07:52:17.8557	+ 19:35:42.1305	0.117	78.88±17.7	1,RQ	0.734±0.049	0.48±0.02	1.9 × 10 ⁴	2.66 × 10 ²²	-1.2±0.1	Jet	Radio-AGN
J0759 + 5050	07:59:40.9488	+ 50:50:23.9955	0.055	135.59±13.2	2,RQ	5.61±0.31	3.83±0.13	2.5 × 10 ⁴	4.09 × 10 ²²	-1.22±0.06	Jet	Radio-AGN
J0802 + 4643a	08:02:24.3563	+ 46:43:00.7791	0.121	92.46±13.9	2,RQ	0.831±0.077	0.403±0.027	1.0 × 10 ⁴	3.22 × 10 ²²	-1.135±0.002	Jet	Radio-AGN
J0802 + 4643b	08:02:24.3420	46:43:00.7116	0.121	108.21±14.4	2,RQ	1.009±0.1	0.431±0.031	8.7 × 10 ³	3.91 × 10 ²²			
J0842 + 0759	08:42:05.5753	+ 07:59:25.5448	0.134	<171.84**	1,RQ	1.18±0.099	1.233±0.005	>1.9×10 ^{4**}	5.20 × 10 ²²	-0.4±0.3	Jet	Radio-AGN
J0842 + 2048	08:42:07.5143	+ 20:48:40.1529	0.181	< 173.06	1,RQ	1.003±0.069	1.0±0.035	> 7.3 × 10 ⁴	8.78 × 10 ²²	-0.7±0.02	Compact	Radio-AGN
J0907 + 4620	09:07:22.3459	+ 46:20:18.1822	0.167	42.75±2.9	2,RL	7.03±0.097	6.124±0.046	1.3 × 10 ⁶	5.09 × 10 ²³	-0.6±0.1	Jet	Radio-AGN
J0909 + 1052	09:09:35.5039	+ 10:52:10.5827	0.166	< 152.57	2,RQ	0.66±0.079	0.505±0.035	> 2.0 × 10 ⁴	5.11 × 10 ²²	-1.12±0.06	Compact	?
J0945 + 1737	09:45:21.3389	+ 17:37:53.2662	0.128	61.86±13.9	2,RQ	3.76±0.14	2.871±0.062	2.0 × 10 ⁵	1.60 × 10 ²³	-0.89±0.07	Irregular	Radio-AGN
J0946 + 1319	09:46:52.5769	+ 13:19:53.8710	0.133	151.24±31.7	1,RQ	1.27±0.14	0.422±0.035	3.7 × 10 ³	5.95 × 10 ²²	-1.0±0.3	Jet	Radio-AGN
J0958 + 1439a	09:58:16.8926	+ 14:39:23.9573	0.109	217.37±29.6	2,RQ	0.664±0.064	0.159±0.013	8.1 × 10 ²	2.07 × 10 ²²	-1.23±0.01	Jet	Radio-AGN
J0958 + 1439b	09:58:16.8943	+ 14:39:23.8242	0.109	119.16±28.8	2,RQ	0.476±0.046	0.186±0.013	2.1 × 10 ³	1.49 × 10 ²²			
J0958 + 1439c	09:58:16.8988	+ 14:39:23.7288	0.109	162.72±33.3	2,RQ	0.356±0.042	0.145±0.012	1.7 × 10 ³	1.11 × 10 ²²			
J0958 + 1439d	09:58:16.9039	+ 14:39:23.4930	0.109	83.42±19.6	2,RQ	0.504±0.038	0.281±0.014	6.4 × 10 ³	1.57 × 10 ²²			
J1000 + 1242	10:00:13.1504	+ 12:42:26.2654	0.148	49.35±5.3	2,RQ	7.087 ±0.051	6.507±0.024	1.2 × 10 ⁶	4.04 × 10 ²³	-0.7±0.05	Compact	Radio-AGN
J1010 + 0612	10:10:43.3638	+ 06:12:01.3871	0.098	37.71±4.9	2,RQ	18.55±0.13	17.542±0.058	3.8 × 10 ⁶	4.55 × 10 ²³	-1.11±0.02	Compact	Radio-AGN
J1010 + 1413	10:10:22.9563	+ 14:13:00.8012	0.199	<257.78**	2,RQ	2.197±0.083	2.026±0.042	>2.8×10 ^{4**}	2.45 × 10 ²³	-0.9±0.04	Compact	J + 21
J1016 + 0028	<i>U</i>	<i>U</i>	0.116	<i>U</i>	2,RQ	<i>U</i>	<i>U</i>	<i>U</i>	<i>U</i>	<i>U</i>	Non – detected	J + 21
J1016 + 5358	10:16:23.7731	+ 53:58:06.0736	0.182	< 410.85	2,RQ	0.183±0.051	0.146±0.023	> 6.3 × 10 ²	1.79 × 10 ²²	-1.3±0.1	Jet	Radio-AGN
J1045 + 0843	10:45:05.1604	+ 08:43:39.1434	0.125	<532.10**	1,RQ	0.995±0.095	0.829±0.029	>3.7×10 ^{3**}	4.10 × 10 ²²	-1.05±0.05	Compact	?
J1055 + 1102*	10:55:55.2787	11:02:51.7446	0.145	406.66±86.6	2,RQ	0.338±0.038	0.114±0.09	5.4 × 10 ²	1.94 × 10 ²²	-1.11±0.09	Jet	Radio-AGN
J1100 + 0846	11:00:12.3843	+ 08:46:16.3234	0.1	173.31±26.7	2,RQ	9.8±0.58	6.78±0.25	4.7 × 10 ⁴	2.49 × 10 ²³	-1.04±0.04	Compact	J + 21
J1108 + 0659a*	11:08:51.0344	06:59:01.2629	0.181	544.34±75.5	2,RQ	0.189±0.029	0.0782±0.009	6.4 × 10 ²	1.86 × 10 ²²	-1.4±0.1	Jet	Radio-AGN
J1108 + 0659b*	11:08:51.0614	06:59:00.9664	0.181	380.73±81.8	2,RQ	0.158±0.017	0.102±0.067	1.1 × 10 ³	1.55 × 10 ²²			
J1114 + 1939	<i>U</i>	<i>U</i>	0.199	<i>U</i>	2,RQ	<i>U</i>	<i>U</i>	<i>U</i>	<i>U</i>	-0.83	Non-detected	?
J1116 + 2200	<i>U</i>	<i>U</i>	0.143	<i>U</i>	2,RQ	<i>U</i>	<i>U</i>	<i>U</i>	<i>U</i>	-1.22±0.05	Non-detected	?
J1222-0007	12:22:17.8631	-00:07:43.6912	0.173	527.93±200.2	2,RQ	0.384±0.073	0.113±0.016	4.0 × 10 ²	3.13 × 10 ²²	-0.87±0.1	Jet	Radio-AGN
J1223 + 5409	12:23:13.21721	54:09:06.50966	0.156	109.85±27.3	1,RL	12.18±0.62	9.59±0.27	4.5 × 10 ⁵	7.51 × 10 ²³	-0.5±0.3	Compact	Radio-AGN
J1227 + 0419	12:27:39.8254	+ 04:19:32.3342	0.18	<767.48**	1,RQ	1.911±0.071	2.005±0.039	>2.1×10 ^{3**}	1.74 × 10 ²³	-1.02±0.04	Compact	?
J1300 + 0355	13:00:07.9960	+ 03:55:56.6288	0.184	78.43±14.3	1,RQ	17.481±0.056	17.25±0.028	3.5 × 10 ⁶	1.36 × 10 ²⁴	0.2±0.1	Compact	Radio-AGN
J1302 + 1624	13:02:58.8441	+ 16:24:27.8248	0.067	196.26±35.8	1,RQ	3.605±0.062	2.908±0.029	5.0 × 10 ³	3.89 × 10 ²²	-0.87±0.07	Jet	Radio-AGN
J1316 + 1753a	13:16:42.8993	+ 17:53:32.6408	0.15	<153.84**	2,RQ	0.35±0.043	0.345±0.024	>6.8×10 ^{3**}	2.18 × 10 ²²	-1.18±0.04	Jet	Radio-AGN
J1316 + 1753b	13:16:42.9218	17:53:32.4226	0.15	141.96±42.9	2,RQ	0.286±0.043	0.136±0.014	2.5 × 10 ³	1.79 × 10 ²²			
J1324 + 5849	13:24:18.2529	+ 58:49:11.7115	0.192	31.66±19.5	1,RQ	31.66±0.09	0.691±0.047	4.7 × 10 ⁵	8.18 × 10 ²²	-0.94±0.02	Compact	Radio-AGN
J1347 + 1217	13:47:33.3611	+ 12:17:24.2239	0.121	64.11±14.4	2,RL	1958±0.012	1834±0.0057	9.9 × 10 ⁷	6.98 × 10 ²⁵	-0.4±0.2	Compact	Radio-AGN
J1355 + 2046	13:55:50.1994	+ 20:46:14.5014	0.196	522.86±136.8	1,RQ	0.398±0.065	0.173±0.017	2.6 × 10 ³	4.31 × 10 ²²	-0.92±0.03	Jet	Radio-AGN
J1356 + 1026	13:56:46.1064	+ 10:26:09.0619	0.123	185.20±7.3	2,RQ	12.65±0.13	10.284±0.045	5.2 × 10 ⁵	5.05 × 10 ²³	-1.09±0.06	Compact	Radio-AGN
J1430 + 1339	14:30:29.8716	+ 13:39:11.8827	0.085	141.67±37.9	2,RQ	3.58±0.33	3.03±0.14	2.9 × 10 ⁴	6.53 × 10 ²²	-1.2±0.1	Jet	Radio-AGN
J1436 + 4928	14:36:07.20911	+ 49:28:58.5309	0.128	73.19±42.5	2,RQ	0.331±0.059	0.272±0.028	1.3 × 10 ⁵	1.44 × 10 ²²	-1.1±0.1	Compact	Radio-AGN
J1454 + 0803	14:54:34.3504	+ 08:03:36.6701	0.13	241.63±105.3	1,RQ	0.638±0.109	0.332±0.038	1.8 × 10 ³	2.88 × 10 ²²	-1.1±0.1	Jet	Radio-AGN
J1509 + 1757*	15:09:13.7902	17:57:10.1417	0.171	324.61±132.2	1,RQ	0.287±0.032	0.198±0.013	2.0 × 10 ³	2.48 × 10 ²²	-1.4±0.1	Jet	Radio-AGN
J1518 + 1403	<i>U</i>	<i>U</i>	0.139	<i>U</i>	2,RQ	<i>U</i>	<i>U</i>	<i>U</i>	<i>U</i>	-1.2	Non-detected	?
J1553 + 4407	<i>U</i>	<i>U</i>	0.197	<i>U</i>	2,RQ	<i>U</i>	<i>U</i>	<i>U</i>	<i>U</i>	-0.2	Non-detected	J + 21
J1555 + 5403*	15:55:01.4393	54:03:27.0033	0.18	383.11±26.0	1,RQ	0.41±0.028	0.083±0.005	4.5 × 10 ²	3.73 × 10 ²²	-1.0±0.1	Jet	Radio-AGN
J1655 + 2146a*	16:55:51.3569	21:46:03.0907	0.154	540.67±151.7	1,RQ	0.39±0.049	0.189±0.016	3.6 × 10 ²	2.57 × 10 ²²	-1.15±0.04	Jet	Radio-AGN
J1655 + 2146b*	16:55:51.4088	21:46:02.1131	0.154	<551.70**	1,RQ	0.149±0.018	0.187±0.011	>3.5×10 ^{2**}	9.82 × 10 ²¹			
J1701 + 2226	17:01:58.2478	+ 22:26:41.8308	0.197	251.04±103.3	1,RL	3.56±0.15	3.22±0.09	1.3 × 10 ⁵	3.38 × 10 ²³	-0.12±0.02	Jet	Radio-AGN
J1715 + 6008	17:15:44.0246	+ 60:08:35.5583	0.157	213.02±53.3	2,RQ	1.26±0.3	0.334±0.064	5.2 × 10 ³	8.57 × 10 ²²	-1.08±0.08	Jet	Radio-AGN

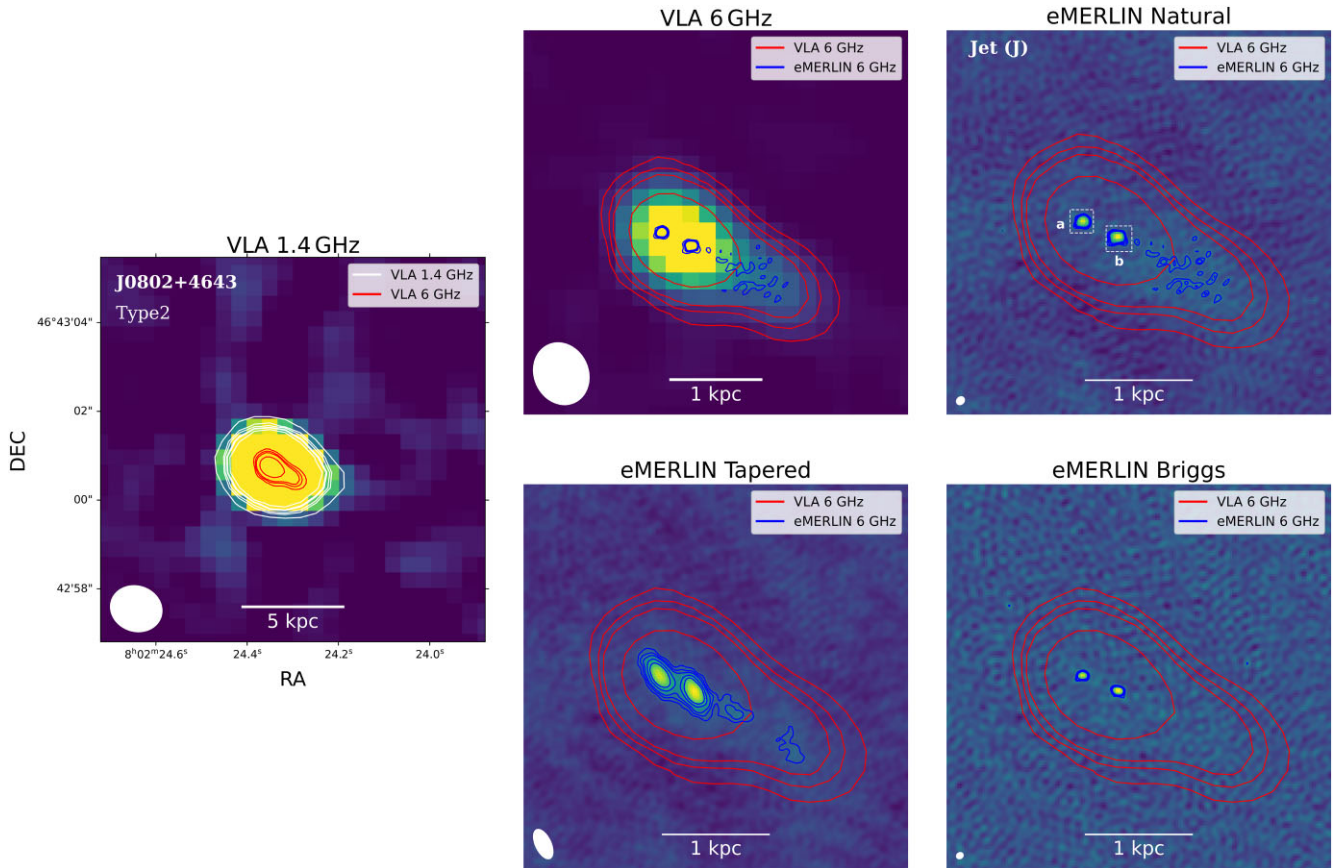


Figure 2. Example target to highlight the set of radio maps used in this work. *Left:* VLA 1.4 GHz image (white contours, with levels $1\sigma \times [5, 10, 12, 15, 16, 20]$) overlaid with the VLA 6 GHz image (red contours, with levels $1\sigma \times [4, 8, 12, 16, 32]$; in this and all other panels). *Top middle:* the 6 GHz VLA image overlaid with the *e*-MERLIN natural-weighted image (blue contours, with levels $1\sigma \times [4, 5, 6, 7, 8, \dots]$; in this and all other panels). *Top right:* *e*-MERLIN natural-weighted image (blue contours). Labelled regions on the *e*-MERLIN natural-weighted image are for any identified individual compact components (when more than one). *Bottom middle:* *e*-MERLIN natural-weighted image with tapering applied (blue contours, with levels $1\sigma \times [4, 5, 6, 7, 8, \dots]$). *Bottom right:* *e*-MERLIN Briggs weighted image (blue contours, with levels $1\sigma \times [4, 5, 6, 7, 8, \dots]$). Ellipses represent the synthesized beam for the corresponding background image in each panel. Scale bars are also shown to highlight physical size scales. Equivalent figures for all sources are provided in the Supplementary Material.

2.3 Image analysis

The CASA task IMFIT was used for source fitting any components that were identified in the radio maps with peak signal-to-noise ratios $\text{SNR} \gtrsim 4\sigma$, and which could be well described by a 2D Gaussian model. Where multiple components were identified, their properties were calculated separately. These are highlighted in the figures (see example in Fig. 2) and are listed separately in Table 1. Any identified diffuse structures (not characterized by the fitting or properties in Table 1) form part of the morphology discussion in Sections 3.1 and 4.3. We note that the identified *e*-MERLIN structures are always co-located with known existing 6 GHz emission as seen in the VLA maps, providing further confidence in their reliability.

The natural-weighted maps were primarily used for the extraction of the radio properties with CASA, as these maps provide the maximum sensitivity to compact structures. However, in 5 sources, structures were only identified in the tapered maps, and these were used instead (see Section 3). These targets are highlighted in Table 1. The CASA IMFIT task fits 2D elliptical Gaussians to an intensity distribution region that has been manually selected on a radio map. The fitting process returned the source coordinates at the radio peak, the source size deconvolved from the beam (the angular full width at half-maximum, FWHM, at both the major and minor axes), the position angles (PA; in degrees), the integrated flux density and the

peak brightness. In some instances, during the fitting process, some sources remained undeconvolved from the beam (unresolved, with no size constraints) or were only marginally resolved along one or both directions (upper limits returned on the size). These results, the associated errors from the fits, and the derived radio properties are all provided in Table 1.

A visual inspection of the radio maps, combined with the measured radio properties, and derived properties (such as the brightness temperature measurements) are used to investigate the origin of radio emission in this sample of quasars at \sim sub-kiloparsec scales, as presented in Section 3 and discussed in Section 4.

3 RESULTS

Three sets of radio maps from our 6 GHz *e*-MERLIN data were produced for each of the 42 targets of the Quasar Feedback Survey (see example in Fig. 2). As described in Section 2.3, these maps cover a range of higher spatial resolution (Briggs weighting), optimum sensitivity to compact structures (natural weighting) and sensitivity to more extended structures (natural weighting with tapering). The natural-weighted radio maps were primarily those used for the extraction of the compact radio structure properties. However, we find that 10/42 sources remained undetected in these maps, but with 5/10 of these sources being detected in the tapered maps. In these

5 cases, the radio properties were extracted from the tapered maps, and are labelled with an asterisk in Table 1. In 5 sources, more than one compact structure was identified in the maps. For these sources, the properties of the individual structures were separately extracted, labelled with ‘a’, ‘b’, etc. (see example in Fig. 2), and are highlighted in bold in Table 1.

In Section 3.1, we present our source classification based on a visual inspection of the radio morphology. The flux density measurements across sub-kiloparsec to kiloparsec scales are presented in Section 3.2, with the radio luminosity measurements at 6 GHz and brightness temperature presented in Sections 3.3 and 3.4, respectively.

Table 1 presents the properties obtained for the radio structures identified in the *e*-MERLIN images, in addition to some derived quantities (described later in this section), and other relevant source properties used for our results and discussion. The columns are as follows:

Column (1) gives the source ID in international coordinates.

Columns (2) and (3) give the source positions from *e*-MERLIN in J2000. A ‘U’ indicates that the source was non-detected in *e*-MERLIN and therefore all the *e*-MERLIN radio measurements remained undetermined, with a corresponding ‘U’ in all relevant columns.

Column (4) gives the redshift values from SDSS (DR7).

Column (5) is the projected linear size (the deconvolved major axis) of the source. The 7 sources italicized with double asterisks remained completely undeconvolved based on the fitting results, and conservative upper limits are provided, using the size of the restoring beam.

Column (6) states the type of AGN classification whether type 1 or 2 (based on optical spectra) and if radio-loud (RL) or radio-quiet (RQ) based on Xu et al. (1999). See Fig. 1.

Column (7) gives the total flux density (mJy) measurements.

Column (8) gives the peak brightness (mJy per beam) measurements.

Column (9) provides the derived brightness temperature (T_B)K measurements. The sources italicized with double asterisks remained undeconvolved from the beam and the lower limits on the T_B are derived based on the size of the restoring beam.

Column (10) list the derived radio luminosities of the extracted radio structures at 6 GHz ($L_{6\text{GHz}}$).

Column (11) provides the spectral indices (α , over 4–8 GHz) of the core emission, as obtained from the ~ 0.3 arcsecond resolution C-band VLA images (derived in Jarvis et al. 2021).

Column (12) lists our radio morphology classification, based on visual inspection only.

Column (13) lists our final classification of the origin of the radio emission. Question marks (?) indicate an unknown classification, while J + 21 are sources classified as a radio-AGN in Jarvis et al. (2021), but not in this work.

3.1 Sub-kiloparsec radio morphology

Faint radio galaxies show a diverse range of morphologies at galactic scales from unresolved compact radio cores, sub-kiloparsec radio jets, side lobes, hotspots, and diffuse emission (e.g. Baldi, Capetti & Giovannini 2019; Hardcastle & Croston 2020; Saikia 2022; Williams et al. 2023). Probing the radio morphology of these quasars is paramount and particularly useful in understanding AGN feedback processes, and the corresponding implication on galaxy evolution. Therefore, using the presence (or lack) of extended emission, we describe the radio morphology of our target sample based on the four

categories described below. Examples from the different categories are shown in Fig. 3. This approach is a simplified approach to that used in similar previous work (e.g. Baldi et al. 2018; Jarvis et al. 2021). Based on visual inspection only, we classified our sources into:

(i) Compact (C): targets that only visibly show compact emission, i.e. without any signs of extended, or multiple, radio structures. We note that these sources may still be extended when deconvolved from the beam during the fitting process (Section 2.3).

(ii) Jet (J): targets that show cores with one-sided or two-sided jet-like features (i.e. clearly asymmetric/marginally resolved and collimated in one or two directions from the core). Additionally, targets that show multiple, but well collimated, radio knots were also classified as jet-like since well collimated symmetrical double/triple radio knots are indicative of radio-AGN jets that are terminated in the dense ISM (e.g. Leipski et al. 2006; Middelberg et al. 2007; O’Dea & Saikia 2021). This classification combines multiple sub-classifications of jet-like structures used in other works (e.g. Baldi et al. 2018; Jarvis et al. 2021). We note that this definition is describing the morphology. It may be physically associated with an AGN-driven jet, or potentially a collimated wind-driven outflow (see discussion in Harrison & Ramos Almeida 2024).

(iii) Irregular (I): any source that is visibly extended but does not fit the jet criteria was classified as irregular.

(iv) Non-detected (U): classification for any sources that remain undetected across all the *e*-MERLIN maps (natural-weighted, tapered, and Briggs weighting).

Visual inspection for the classification of the radio morphologies was primarily performed using the natural-weighted maps; however, the tapered maps often provided confirmation of low surface brightness extended structures seen (e.g. see J1316 + 1753 and J0945 + 1747, in Fig. 3). For the 5/10 sources that were only detected in the tapered maps, the tapered maps were used for morphology classification.

Based on this visual inspection, 15/42 targets were classified as compact sources, 21/42 as jet-like, 1/42 as irregular and 5/42 as non-detected. Overall, the natural-weighted maps showed mainly compact structures, with isolated and well collimated radio knots (classified as multicomponent sources; e.g. J0802 + 4643 in Fig. 2). In some cases, one-sided jet-like structures were clearly identified (e.g. J0759 + 5050 in Fig. 3). The Briggs-weighting maps further isolated/confirmed the compact cores in most targets (e.g. J0945 + 1747 in Fig. 3) and the well-collimated nature of the radio knots/structures. On the other hand, the tapered maps often drew out some low surface brightness extended emission, which sometimes connected the hotspots observed in the higher resolution maps (e.g. J0958 + 1439 in Fig. 3).

3.2 Sizes and flux densities of sub-kiloparsec radio structures

Fig. 4 shows the ratios (R) of the peak brightness to the integrated flux density as a function of the projected linear size in *e*-MERLIN, for each of the structures identified and fit (see Section 2.3). Across the 37 detected targets, there are 44 detected structures in total (i.e. due to the 2–4 multiple components observed in 5 of the targets; see Table 1). Excluding all the upper limits, the projected linear sizes range from ~ 30 to 540 pc, with a median size of ~ 147 pc. Of the 37 *e*-MERLIN detected targets, 8 only have upper limits on the projected linear sizes for any of the structures identified. In all these 8 targets, only a single compact component is identified, indicating the radio emission on these scales is dominated by a compact, unresolved core.

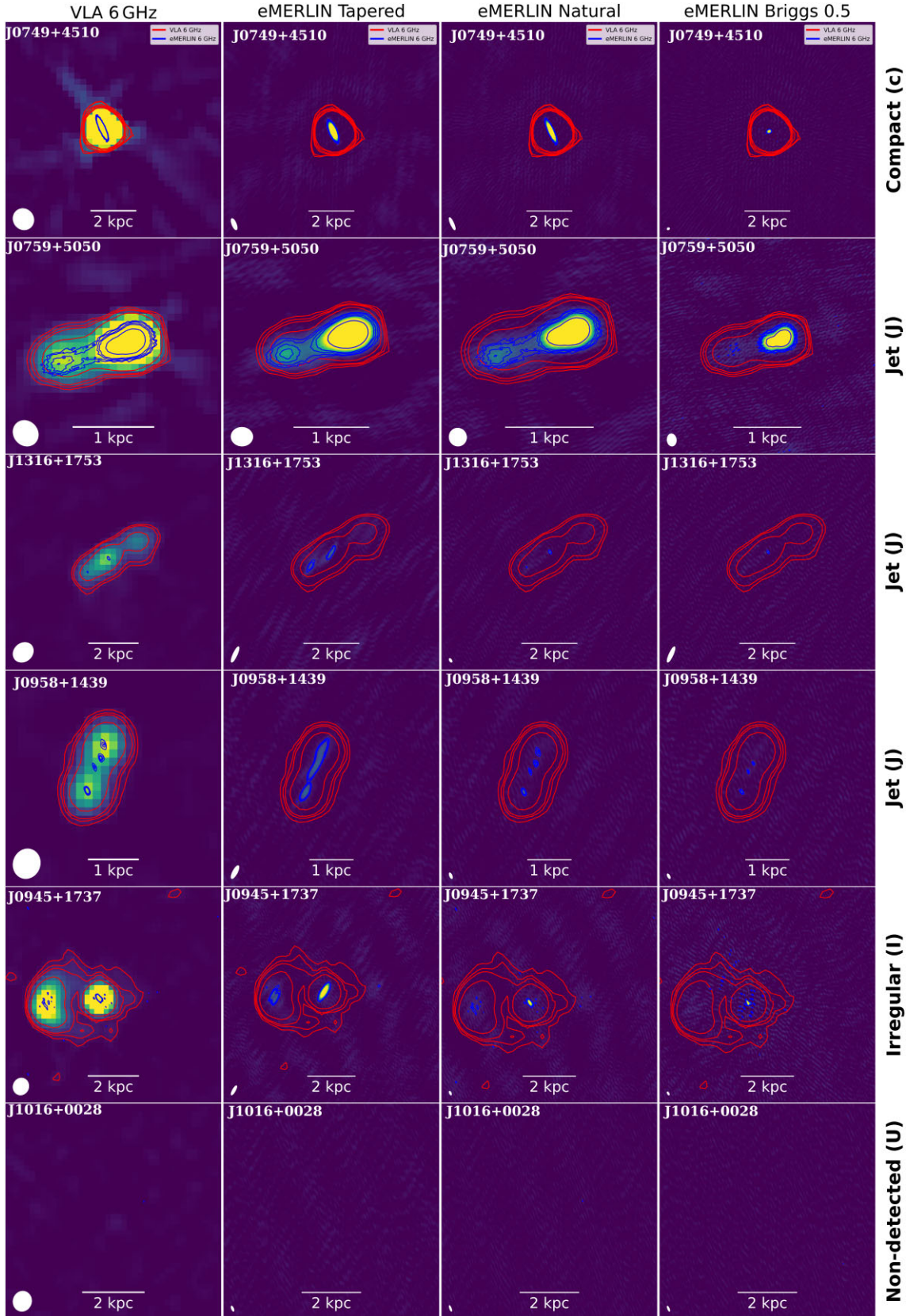


Figure 3. Example radio maps of six different targets (one in each row) to highlight the different radio morphology classifications. The first column shows VLA 6 GHz radio maps, with the corresponding contours shown in red in all other panels. The remaining panels show the three different *e*-MERLIN maps made for each source, with corresponding contours in blue (tapered, natural weighting, and Briggs weighting). The morphology classification for each target (compact, jet, irregular, or non-detected) is shown on the right.

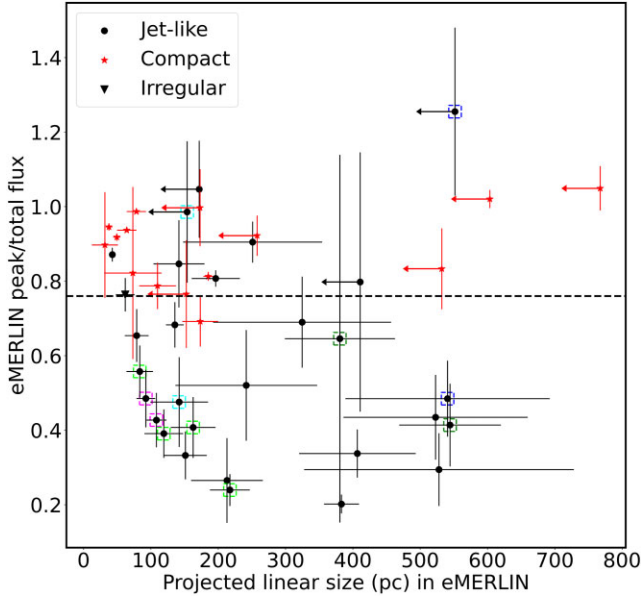


Figure 4. The ratios (R) of the peak brightness to integrated flux density against the projected linear size for all the structures identified in the *e*-MERLIN images. The multicomponent sources are highlighted with dashed squares, using different colours for different sources. The median peak brightness to integrated flux density ratio is $R = 0.76$ (dashed line). As expected, ~ 80 per cent of the sources showing jet-like and extended morphology lie below this median, while ~ 93 per cent of the compact sources lie above this median, indicating that a large fraction of the flux density in the compact sources can be attributed to the central core.

However, the upper limits are not very constraining in most cases due to beam sizes (see Section 2.3), reaching upper limit values of $\lesssim 770$ pc.

Across all 44 detected structures, the median peak/total flux density ratio is $R = 0.76$. This indicates that, on average, only ~ 20 per cent of the integrated flux density could be attributed to more extended radio emission in the structures, and they are typically very compact, confirming what was measured for the projected linear sizes. As can be seen in Fig. 4, this peak/total flux density ratio ranges from $\sim R = 0.2 - 1.0$, across all the structures. Overall, the sources classified as compact based on their morphology (Section 3.1) have high peak/total flux density values, with ~ 93 per cent (14/15) above the median value. This is true for all of the unresolved sources, further indicating that they are point sources and that nearly all of the flux can be attributed to the central core. We note that all the four sources above $R > 1$ (J0749 + 4510, J0842 + 0759, J1227 + 0419, and J1655 + 2146b), have error bars consistent with $R \sim 1.0$, and remain undeconvolved from the beam, further indicating that they are dominated by central, unresolved, and compact cores. This is true even for the two sources with the least constraining upper limits on the projected linear sizes with upper limits of 603 and 767 pc (i.e. J0749 + 4510 and J1227 + 0419).

We investigated the 9 jet-like or irregular targets that showed a high peak/total flux density ratio $R > 0.76$ (i.e. greater than the median). These targets are classified as jet-like based on visual inspection due to the well-collimated extended emission structure and/or the presence of multiple radio knots in the systems seen across the whole target. These extended structures are not captured by the fitting of the *individual* components which are presented in Fig. 4 and Table 1, which may be highly compact in themselves. We therefore conclude that for the extended or jet-like sources showing $R > 0.76$, this can be

attributed to our fitting under sampling the *total* integrated flux of the source. For the remaining of the discussion, we will keep track of this important distinction between the properties of the individual fitted structures, and the sources as a whole. For example, we investigate the contribution of the compact radio structures to the total radio luminosity in Section 4.1.

3.3 Radio luminosity at 6 GHz

Our data are insufficient to provide spectral indices of the individual structures observed in *e*-MERLIN. However, using the 4–8 GHz spectral indices derived in Jarvis et al. (2021) at ~ 0.3 arcsec resolution VLA data (column 11 in Table 1), we derived the radio luminosity $L_{6\text{GHz}}$ for the structures identified (presented in column 10 of Table 1). In Fig. 5, we plot $L_{6\text{GHz}}$ as a function of the projected linear size for each target (left panel) and the size distribution of both type 1 and type 2 targets in the sample (right panel). Where more than one structure was identified, we plot the total radio luminosity of all of the structures, and used the largest projected linear size in the multicomponent target. The radio luminosities range from $L_{6\text{GHz}} = 9.8 \times 10^{21} - 7.0 \times 10^{25} \text{ W Hz}^{-1}$, with a median of $L_{6\text{GHz}} = 3.8 \times 10^{22} \text{ W Hz}^{-1}$. 93 per cent of the sources have $L_{6\text{GHz}} < 1 \times 10^{24} \text{ W Hz}^{-1}$ with only three sources (J0749 + 4510, J1300 + 0355, and J1347 + 1217) having $L_{6\text{GHz}} > 1 \times 10^{24} \text{ W Hz}^{-1}$ and only 1 source, J1347 + 1217, showing $L_{6\text{GHz}} > 1 \times 10^{25} \text{ W Hz}^{-1}$. This further confirms our sample is dominated by radio quiet sources (Fig. 1), with moderate radio powers. We discuss the fraction of total radio luminosity located in the structures *e*-MERLIN maps in Section 4.1.

Separating our sample into either type 1 or type 2 in Fig. 5 (*left panel*), we find no strong evidence for a difference in the radio sizes and luminosities distribution of the radio structures identified across both types of sources. However, the type 2 quasars show a significant 0.45 Spearman rank correlation coefficient, whilst the type 1 objects show a negligible correlation of 0.02. Thean et al. (2001) show a similar result where their type 2 sources show a significant correlation, unlike the type 1 sources. Additionally, in the right panel of Fig. 5, we constructed the cumulative distribution of projected linear sizes (including the upper limits), separated by AGN type, by using a Kaplan–Meier estimator with the y-axis showing the probability that a target is larger than a given size. Excluding the two type 1 (J0749 + 4510 and J1227 + 0419) sources showing the largest linear sizes (upper limits), there is no significant statistical differences between the two types, as is typical of most compact objects (e.g. O’Dea 1998; Thean et al. 2001).

3.4 Brightness temperature

Using observables of radio flux densities and the sizes, high resolution radio imaging can be useful in disentangling star formation from AGN in radio quiet galaxies based on the brightness temperature T_{B} of a radio core (e.g. Condon 1992; Middelberg et al. 2007). At moderate redshifts, compact radio cores have linear sizes of \sim parsec scales (corresponding to a few mas in angular size) which imply high brightness temperatures. This relates the size of the compact core to its maximum flux density ($\theta \approx S_{\text{m}}^{0.5} \nu_{\text{c}}^{-1}$) at GHz frequencies (Burke, Graham-Smith & Wilkinson 2019). Using the observed angular sizes (intrinsic radio sizes convolved with the beam), the flux density and assuming the brightness temperature distribution of a source at a given redshift z can be modelled as an elliptical Gaussian distribution (e.g. Condon et al. 1982; Ulvestad et al. 2005), we derive our T_{B}

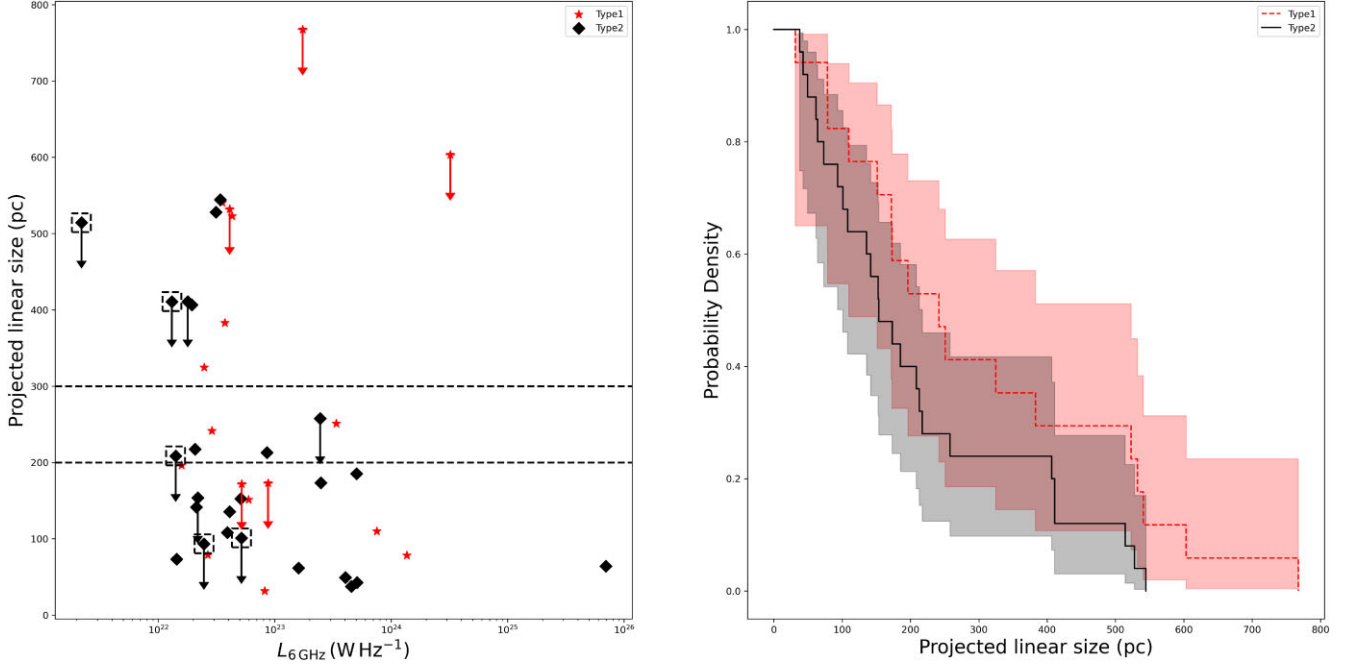


Figure 5. Left: Projected linear sizes versus 6 GHz radio luminosity for the sample in *e*-MERLIN (see Section 3.3), separated into type 1 (red stars) and type 2 (black diamonds). The non-detected sources are highlighted by squares and their luminosities were derived using the lower limits on the flux density ($3\times$ rms). Right: Cumulative size distributions for the projected linear sizes of the *e*-MERLIN radio structures for the 18 type 1 (red curve) and 24 type 2 (black curve) quasars as given by the Kaplan–Meier estimator. The shaded regions are 1σ error, and reveal no strong evidence for a difference in size distributions between the two types.

following the standard equation:

$$T_B = 1.22 \times 10^{12} (1+z) \left(\frac{S_\nu}{1 \text{ Jy}} \right) \left(\frac{\nu}{1 \text{ GHz}} \right)^{-2} \left(\frac{\theta_{\text{maj}} \theta_{\text{min}}}{1 \text{ mas}^2} \right)^{-1} \text{ K}, \quad (1)$$

where θ_{maj} and θ_{min} are the deconvolved major and minor axes from the elliptical Gaussian model, S_ν is the observed flux density, and ν is the observing frequency. The derived T_B for *e*-MERLIN are shown in Table 1.

Fig. 6 shows the T_B for our sample as a function of spectral index (derived from the VLA imaging; Jarvis et al. 2021) for the 37 targets with a detection in *e*-MERLIN. We note that 10 targets only have a lower limit on the brightness temperature, due to only having an upper limit on the measured sizes. Excluding the lower limits, the brightness temperature values range from 3.6×10^2 to 9.9×10^7 K. Morabito et al. (2022) find T_B is dependent on the frequency of the observations, redshift, and the spatial resolution. At a central frequency of ~ 6.8 GHz and $\theta_{\text{res}} \approx 20$ mas, $T_B > 10^{4.8}$ K will be indicative of a radio-AGN. Based on this cut-off (see dashed line in Fig. 6), 13/37 of our sources have T_B measurements that would be classified as radio AGNs. We note that 5/13 of these sources are identified as radio-loud (see Fig. 1) and therefore, all our radio-loud quasars are classified as radio-AGN based on brightness temperature. Additionally, a further 8 sources have a lower limit on T_B that may, or may not, be consistent with the AGN cut-off. In Section 4.2, we discuss the implications for identifying radio AGNs across the sample and a comparison to what was previously learnt from the lower spatial resolution VLA observations of the same targets.

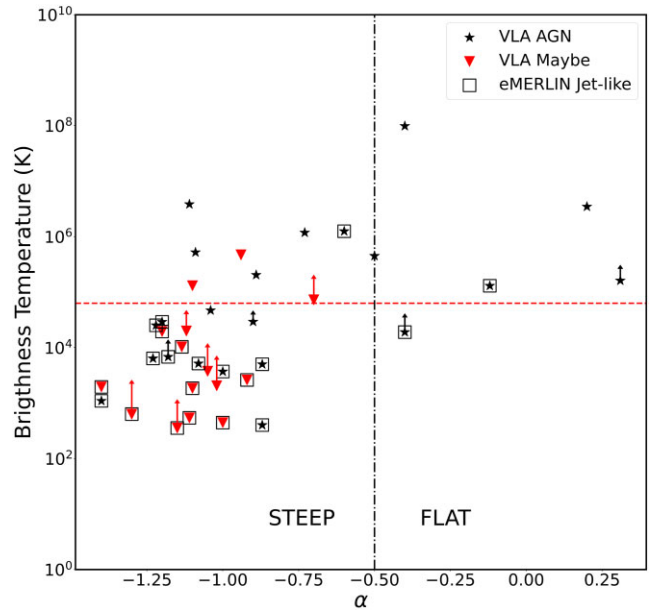


Figure 6. Brightness temperature (T_B) as a function of spectral index, α , (4–8 GHz core spectral index from VLA) for the 37 *e*-MERLIN detected sources that were either known or unknown to host radio AGN from previous VLA data (stars and triangles, respectively). Squares highlight sources that were classified as jet-like based on their radio morphology in *e*-MERLIN. For the multicomponent sources, we plotted the component with the highest T_B value. The dashed red line highlights the lower limit of brightness temperature $T_B = 10^{4.8}$ K for selected radio AGNs.

4 DISCUSSION

We have presented new *e*-MERLIN data for the 42 $z = 0.055$ – 0.2 , type 1 and type 2, pre-dominantly ‘radio quiet’, quasars from the Quasar Feedback Survey (sample selection in Fig. 1). These 6 GHz maps reveal a range of structures on sub-kiloparsec scales (e.g. Figs 2 and 3). In this section, we discuss the implications of our key measurements of the radio morphology, radio sizes, and brightness temperatures (presented in Section 3). We also combine these new *e*-MERLIN results with previous knowledge of the kiloparsec-scale radio emission from VLA maps (Jarvis et al. 2019, 2021). In Section 4.1, we discuss the radio structures on different spatial scales. In Section 4.2, we discuss the identification of radio AGN. In Section 4.3, we discuss the implications of our results for AGN feedback and presented derived properties of the most clearly ‘jetted’ systems. Finally, we explore the relationship between our sample and literature radio-identified AGN samples in Section 4.4.

4.1 Radio emission at sub-kiloparsec to kiloparsec scales

The combination of VLA and *e*-MERLIN maps enables us to trace structures from kiloparsecs to sub-kiloparsec scales. Fig. 2 shows an example set of images from VLA and *e*-MERLIN that we have obtained for these targets. At $z \sim 0.15$ (the median redshift of this sample), the 1.4 GHz VLA maps ($\theta_{res} \sim 1''0$; left panel in Fig. 2) are tracing up ~ 10 kiloparsec scale structures, the 6 GHz VLA maps ($\theta_{res} \sim 300$ mas; top middle panel in Fig. 2) are sensitive to ~ 1 kiloparsec scale structures, whilst the new 6 GHz *e*-MERLIN maps ($\theta_{res} \sim 30$ – 100 mas; top-right, bottom-middle and bottom-right panels in Fig. 2) are sensitive to structures ranging from 10s–100s parsec scales.

For these targets, we find that on ~ 10 kpc scales (traced via the 1.4 GHz VLA maps), 80 per cent of our targets reveal featureless compact structures, whereas for the ~ 20 per cent of the sources that are partly resolved, the large scale structures are mostly resolved out at 6 GHz (~ 1 kpc scales) and are completely resolved out at sub-kpc scales in *e*-MERLIN (see Fig. 7 for examples). Therefore, it is crucial to trace the radio emission using a variety of data sets that are sensitive to different spatial scales. Otherwise, key morphological structures can be completely missed (e.g. Pierce et al. 2020; Rosario et al. 2021; D’Amato et al. 2022; Williams et al. 2023; Chen et al. 2024b; Njeri et al. 2024); either because the resolution is insufficient to characterise small-scale structures (affecting compact radio arrays), or the structures are diffuse and resolved away in the data (affecting extended radio arrays). Indeed, as described in this section, we see both of these regimes are extremely important for a complete characterization of the radio emission of our quasar sample.

Our *e*-MERLIN data are sensitive to sub-kiloparsec scales, with a factor of $\sim 6\times$ and $\sim 20\times$ higher spatial resolution than the existing 6 GHz and 1.4 GHz VLA maps, respectively. We see a variety of structures including weak unresolved cores, well defined hotspots/knots, sub-kiloparsec radio jets, side lobes and and irregular diffuse features, that are not identified in the lower resolution VLA images (examples in Figs 2 and 3). Such a variety of structures is consistent with previous work on quasars and low radio luminosity objects, which makes use of radio maps sensitive to sub-kiloparsec scale structures (e.g. Klöckner et al. 2009; McCaffrey et al. 2022; Saikia 2022; Baldi 2023; Chen et al. 2024b).

In our *e*-MERLIN maps we identified 21/42 sources as having a collimated jet-like structure. Comparing these results to the VLA

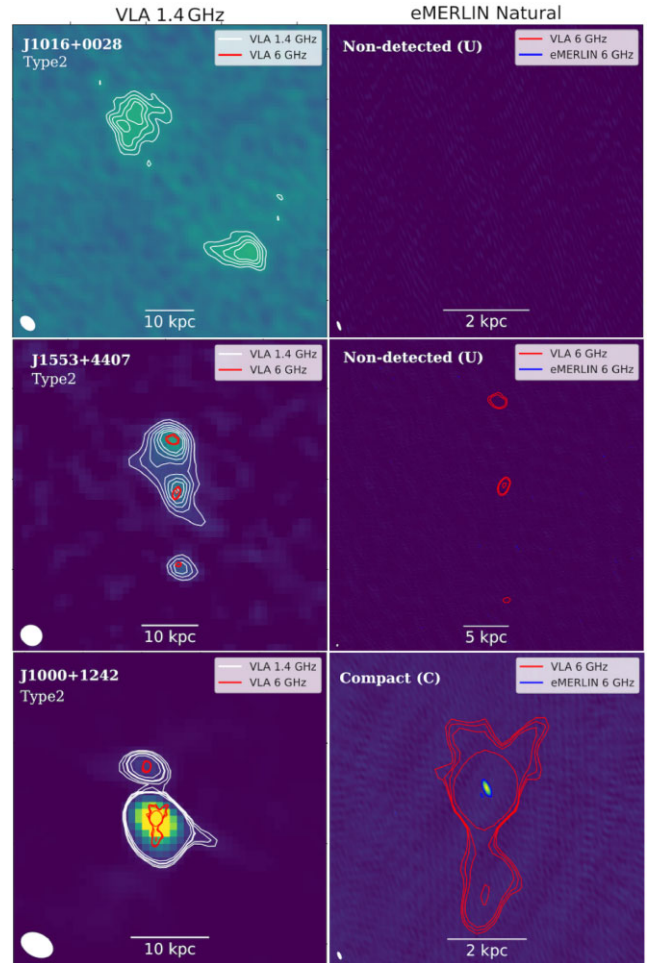


Figure 7. Three example targets that show AGN-like radio structures in the VLA maps (1.4 GHz shown in the left panels and as white contours; 6 GHz shown as red contours in all panels) but are undetected or only identified as compact in the *e*-MERLIN images (right panels and blue contours).

maps, reported in Jarvis et al. (2021), only 7/42 sources were reported as radio-AGN based on the presence of well collimated, symmetric double or triple distinct radio peaks. Jarvis et al. (2021) was conservative in their approach of jet-like morphology classification at $\sim 1 - 60$ kpc scales, and only considered the symmetric triple and double structures. However, several ambiguous sources, based on the VLA maps, are revealed to be more collimated, and clearly jet-like, at the sub-kiloparsec scales obtained in the *e*-MERLIN maps. These include J0759+5050 and J0958 + 1439, which are example sources shown in Fig. 3. Another factor that could affect the ability to resolve extended radio structures could be the orientation with respect to the line of sight. However, we note that, as shown in Section 3.3, we find no statistically significant differences in the radio sizes between the type 1 and type 2 quasars in our sample, albeit based on a relatively small sample size.

Our results highlight one of the key advantages of the *e*-MERLIN maps, enabling the identification of compact and collimated structures (along with the stronger constraints on brightness temperatures, as discussed in Section 4.2). On the other hand, our new *e*-MERLIN maps reveal only compact cores or no detections at all, for some sources which show clearly extended structures of AGN origin (jets/lobes) in the VLA maps. We show three examples of this (J1016+0028, J1553+4407 and J1000 + 1242) in Fig. 7, where we

present the 1.4 GHz VLA maps, the 6 GHz VLA maps, and the new e-MERLIN natural weighted maps. The source J1016 + 0028 shows extended diffuse double lobe structures, separated by ~ 40 kpc, in the 1.4 GHz VLA image (top left panel, Fig. 7); however, the source remains undetected in both the 6 GHz VLA and e-MERLIN data (right panel in Fig. 7). The extended lobe-core-lobe radio structures in J1553 + 4407 as seen in both the VLA maps are completely resolved out, and remains undetected, in the e-MERLIN maps. The source J1000 + 1242, which is classified as having a jet based on the VLA maps, is classified as having only a compact core in e-MERLIN (bottom panels of Fig. 7). This highlights that AGN radio emission can be identified on a range of different spatial scales, from sub-kiloparsecs to 10s of kiloparsecs across this sample of predominantly ‘radio quiet’ quasars.

We can assess how much of the total radio luminosity is located in the sub-kiloparsec scale structures that we have identified in the e-MERLIN images. Under the assumption that the NVSS flux densities are a good proxy for the total radio luminosity⁴, we extrapolated the 6 GHz e-MERLIN flux density measurements to 1.4 GHz to match the NVSS at 1.4 GHz (assuming the spectral indices in Table 1). The resulting total flux density ratios (R) of e-MERLIN to NVSS, as a function of the largest linear size (LSS) of the radio structures seen across all VLA images (Jarvis et al. 2021) are shown in Fig. 8.

The e-MERLIN/NVSS flux density ratios have a median value of 0.39. This implies that the sub-kiloparsec structures in e-MERLIN, only account for ~ 40 per cent of the total radio emission on average. There are 7 sources which are compact based on both the e-MERLIN morphology (stars in Fig. 8), and clearly small in the VLA (based on $\text{LLS} \lesssim 1$ kpc) and have the corresponding, expected, high level of flux recovery in the e-MERLIN maps ($R \gtrsim 60$ per cent). These sources appear to have the majority of the radio luminosity associated with very compact radio structures. Also, the most compact sources in e-MERLIN (< 100 pc) appear to have the highest radio radio luminosity (see Fig. 5, left panel). Nonetheless, only 5 sources are consistent with having ~ 100 per cent of the radio emission recovered by e-MERLIN. For the sources undetected in e-MERLIN, the assumed upper limits (i.e. $3 \times$ the RMS in the maps) suggest that only $\lesssim 10$ per cent of the emission could be located in the sub-kiloparsec scale structures. Therefore, across the sample as a whole, the majority of the high frequency (few GHz) radio emission is typically associated with structures on scales larger than the sub-kiloparsecs, to which e-MERLIN is sensitive. This result may be consistent with the idea that the highest accretion rate radio quiet sources (like this sample), typically become less core dominated (Alhosani et al. 2022); however, a large systematic survey across a wider range of accretion rate systems is required.

Overall, we see a huge range in morphological structures in the quasar sample, including sources which are dominated by compact cores, sources with $\lesssim 1$ kiloparsec scale jet-like emission and sources with $\gtrsim 10$ kiloparsec scale radio lobes. Importantly, Fig. 8 highlights, that even for sources which appear compact in e-MERLIN, the majority the radio emission can be located in extended structures. This adds to the growing evidence that radio emission associated with the radio-quiet quasar population is a complex mix of structures/processes,

⁴We note that we are unable to account for variability between the epochs of the NVSS and e-MERLIN observations, which may particularly affect sources where the radio emission is dominated by very compact cores. Therefore, interpreting the flux density ratios for individual sources should be done with care, although we only find one such system which may have a non-physical e-MERLIN/NVSS flux density ratio > 1 .

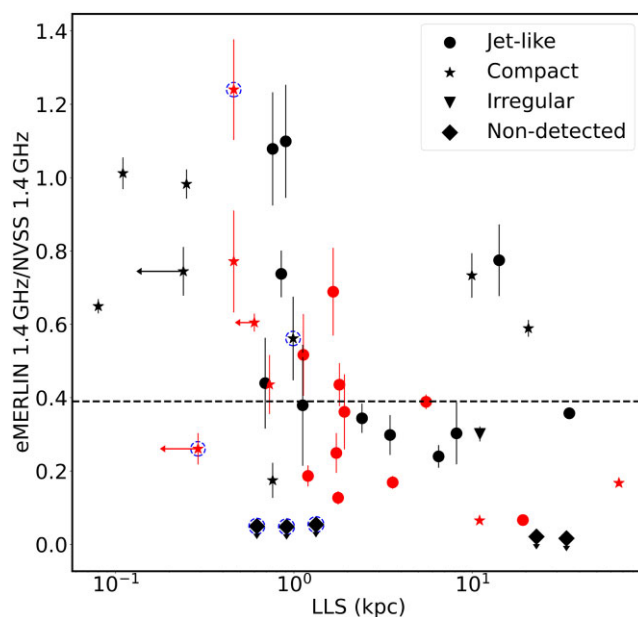


Figure 8. The flux density ratios of the extrapolated e-MERLIN 1.4 GHz flux density to the NVSS 1.4 GHz flux density as a function of the largest linear size (LLS: reported in Jarvis et al. 2021). The median flux density ratio is 0.39, highlighted by the dashed line. The 6 targets highlighted in blue circles remain ambiguous (not classified as radio-AGN in this analysis or in Jarvis et al. (2021)) and are thus excluded in the calculation of the median flux density ratio. We apply lower limits on the flux density ($3 \times$ rms) measurements for the 5/42 non-detected sources in the e-MERLIN data (highlighted in diamond). We also note that 2/5 non-detections are classified as radio AGN in Jarvis et al. (2021); see Table 1. The legends highlight the radio morphology classification of the sources in e-MERLIN. We further split our targets into type 1 (in red) and type 2 (in black), which shows no significant variation in both the flux and largest linear size distribution across the sample.

spanning a range of galactic and sub-galactic scales (e.g. Jarvis et al. 2019; Panessa et al. 2019; Smith et al. 2020; McCaffrey et al. 2022; Silpa et al. 2022, 2023). In the following section we investigate how many of the sources have radio emission that can be attributed to AGN-related processes.

4.2 Identification of Radio AGN

As radio quiet quasars do not produce powerful relativistic jets, the origin of the relatively weak radio emission in quasars still remains largely unknown (e.g. Heckman & Best 2014; Kellermann et al. 2016; Panessa et al. 2019). This weak radio emission might arise from the AGN, star formation processes or both of these. A direct detection of collimated jet-like emission, or a bright and central compact radio core with high brightness temperatures (Section 3.4) can serve as an AGN identifier. We used radio morphology classification and brightness temperature measurements to investigate the origin of radio emission in these quasars.

Fig. 6 shows the brightness temperatures for our e-MERLIN detected targets as a function of the spectral index measured in Jarvis et al. (2021). At least 13, and a maximum of 21 (accounting for lower limits), of these have brightness temperatures above the limit of $T_B = 10^{4.8}$ K, which is the limit assumed to be attributable to AGN emission (Section 3.4). Three of the confirmed sources (highlighted as three red triangles above the $T_B = 10^{4.8}$ K cutoff in Fig. 6) were not previously identified as AGN based on the VLA analysis presented in Jarvis et al. (2021). This is because the VLA

constraints on the brightness temperatures were below the required threshold. This highlights that *e*-MERLIN's superior resolution helps identify some AGN cores. Nonetheless, this is only three sources, despite the order-of-magnitude increase in spatial resolution between *e*-MERLIN and VLA. Indeed, our work indicates a low level of unambiguous AGN cores (~ 31 – 50 per cent) across the sample, with a large fraction of the radio emission located within larger-scale structures (Section 4.1). Further work using very high resolution interferometry, and supplemented by spectral index constraints, will help determine the prevalence of true AGN radio cores across the radio quiet quasar population as a whole (e.g. Chen et al. 2023, 2024a).

For the sources without a high brightness temperature AGN core, we also rely on morphology to identify radio AGN. The sources that show jet-like structures still show diversity, as shown in Fig. 3. Indeed, many low-luminosity radio galaxies are characterized by diverse morphologies (e.g. Leipski et al. 2006; Luo & Sadler 2010; O'Dea & Saikia 2021). Multi-component sources with symmetric double-lobed morphology and well collimated radio knots are indicative of AGN jets, or possibly shocks from outflows, indicating the presence of a radio AGN (e.g. Leipski et al. 2006; Middelberg et al. 2007; O'Dea & Saikia 2021; Fischer et al. 2023). Therefore, the 21/42 sources, which were classified as jet-like based on their morphology, are assumed to host a radio AGN. These are highlighted with squares in Fig. 6.

Combining both morphology and brightness temperatures, we classified 32/42 sources as hosting a radio-AGN based on the *e*-MERLIN data alone. There are 4 additional sources (J1010+1413, J1016+0028, J1100+0846 and J1553 + 4407) which were identified as hosting a radio AGN based upon the VLA data in Jarvis et al. (2021), but not in the *e*-MERLIN data. Of these, two (J1016+0028 and J1553 + 4407) remain undetected in *e*-MERLIN but their radio AGN classification is primarily based on the larger scale radio morphology only seen in VLA maps (see Fig. 7). The other two sources (J1010+1413 and J1100 + 0846) were identified as radio-AGN based on a 'radio excess' above the far-infrared radio correlation and further evidence of radio AGN is presented in Jarvis et al. (2019, 2020). Combining the new information from *e*-MERLIN, and that obtained with the VLA images, we identify radio emission associated with an AGN in 36/42 (~ 86 per cent) of the sources in our Quasar Feedback Survey. This is a significant increase on the ~ 57 per cent of the sources identified using only the VLA data in Jarvis et al. (2021). Such a large fraction of radio AGN, not easily identified using traditional methods (typically with spatially-unresolved data sets), could have important implications for obtaining a complete census of radio AGN activity, and for de-contaminating AGN in radio studies of star-forming galaxy populations (Jarvis et al. 2021; Hansen et al. 2024).

Although a radio AGN is identified in ~ 86 per cent of the quasars in our sample, it does not mean it is the *dominant* radio emission mechanism in all the targets. With *e*-MERLIN typically recovering only ~ 40 per cent of the total flux density on average (Section 4.1), this implies that more than 60 per cent of the total radio emission in the sample can be attributed to extended radio emission. In the absence of other information, the radio emission that is completely resolved away could be associated with star formation or diffuse AGN outflow-driven shocks. Indeed, a significant fraction of diffuse, extended radio structures has been previously noted in quasar samples (Kimball et al. 2011; Condon et al. 2013; McCaffrey et al. 2022). In the following sections, we discuss the radio emission from these quasars for understanding AGN feedback processes.

4.3 Implications for feedback and radio jets at sub-kiloparsec scales

Typically at the moderate luminosities, which represents our sample (Fig. 1), i.e. intermediate between 'radio loud' and very 'radio quiet', star formation cannot be the dominant mechanism contribution to the radio emission (e.g. Zakamska et al. 2016; White et al. 2017; Jarvis et al. 2019; Silpa et al. 2023; Liao et al. 2024). Therefore, other AGN-related processes such as compact, low power radio jets and/or shocks due to AGN-driven outflows are expected to dominate (e.g. Orienti & Prieto 2010; Zakamska & Greene 2014; Nims, Quataert & Faucher-Giguère 2015; Kharb et al. 2021; Harrison & Ramos Almeida 2024; Yamada et al. 2024). Distinguishing these different processes with radio morphology alone can be very challenging, and additional information such as polarisation might be crucial (e.g. Silpa et al. 2022; Fischer et al. 2023; Meenakshi et al. 2024). Nonetheless, the indication is that the radio emission is tracing an interaction between the AGN and the host galaxy ISM.

Indeed, nine targets from this study have already been observed to show a spatial alignment between the radio emission and multi-phase outflows on kiloparsec scales, as traced in [O III] and CO, indicating that the radio emission is tracing sites of ISM interactions (Jarvis et al. 2019; Girdhar et al. 2022, 2024). Furthermore, there is now a lot of evidence in the literature (both from spatially-resolved observations and statistical samples) that radio emission is a good tracer of the energy deposited by AGN into the ISM of their host galaxies across the quasar populations (e.g. Zakamska & Greene 2014; Harrison et al. 2015; O'Dea & Saikia 2021; Calistro Rivera et al. 2024; Harrison & Ramos Almeida 2024; Petley et al. 2024). Intrinsically small radio sources (sub-galactic scales), which dominates this sample, may be at the early stages of evolution, and consequently the most likely to observe such ISM interactions (e.g. O'Dea 1998; Bicknell et al. 2018; Santoro et al. 2020; O'Dea & Saikia 2021; Morganti et al. 2023; Kukreti & Morganti 2024; Miranda Marques et al. 2025). The 100 pc scale structures identified in *e*-MERLIN in this study, would therefore advocate for comparable resolution observations of the multi-phase gas properties of this sample. Indeed, local studies imply that AGN impact could commonly be happening on these ~ 100 pc scales (e.g. Venturi et al. 2021; Singha et al. 2023; Haidar et al. 2024; Holden et al. 2024).

4.3.1 Jet properties

We now continue with the assumption that the majority of the sources in our sample contain low power jets (but see discussion above). The causes for the less-powerful radio jets to be compact, and less-collimated, has been attributed to several factors. This includes a lack of sufficient energy to dissipate efficiently and thus remain entrapped within the host galaxy; the jets are frustrated and their propagation interrupted by the dense interstellar medium (van Breugel, Miley & Heckman 1984; Bicknell et al. 2018; Mukherjee et al. 2018; McCaffrey et al. 2022; Kharb & Silpa 2023); or the jets being sub-relativistic and thus unable to grow due to low jet bulk velocity, or more easily become disrupted (Perucho et al. 2014; Giovannini et al. 2023; Dutta et al. 2024). The exact mechanism driving these moderate jets in these radio-quiet quasars remain uncertain with magnetic fields, black hole spin and accretion disc winds thought to play a key role (e.g. Reeves et al. 2009; Shen & Ho 2014; Panessa et al. 2019; Rusinek et al. 2020).

These low power compact jets, still could have sufficient energy to disrupt the ISM and affect the host galaxy evolution, depending on

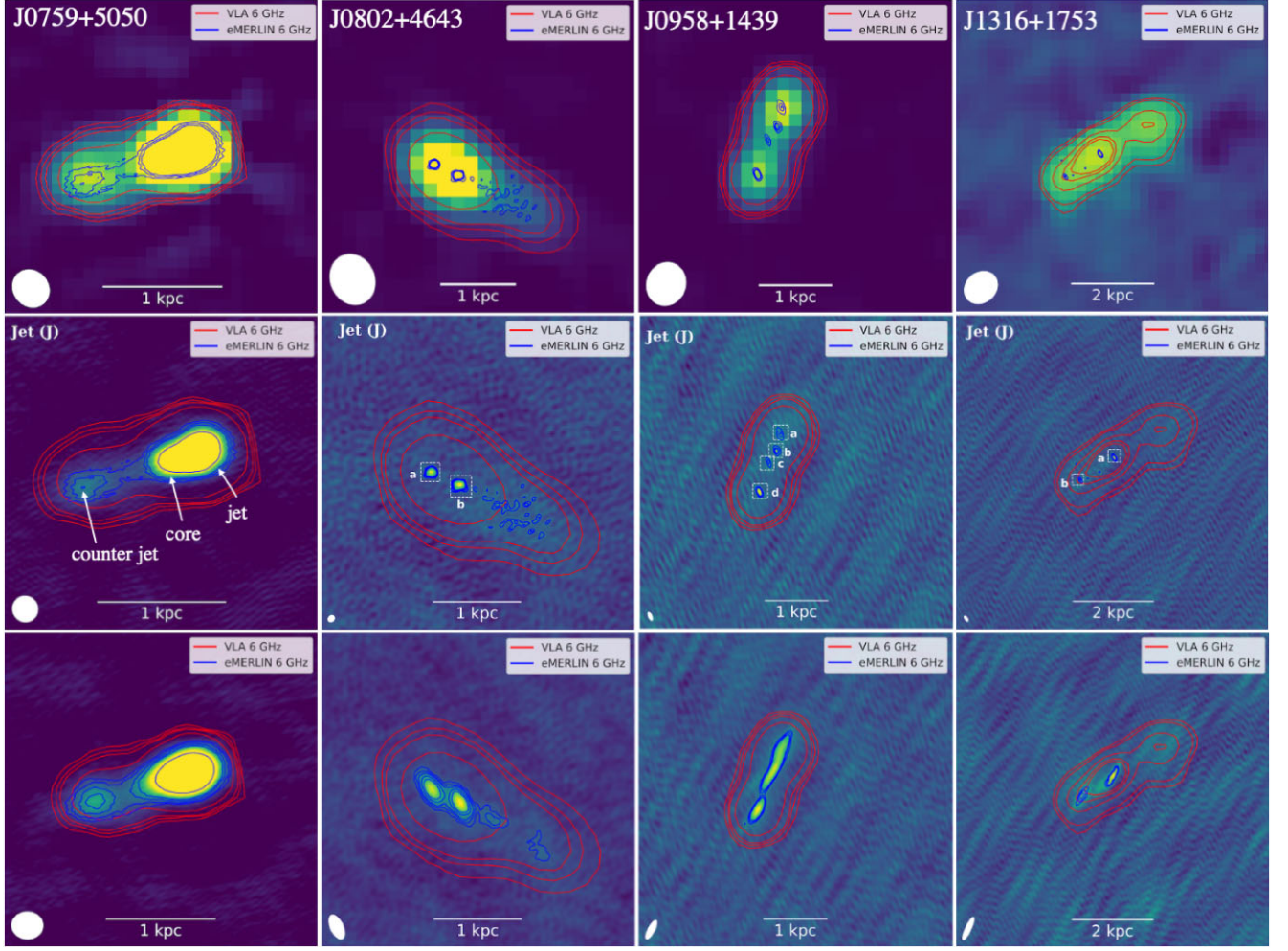


Figure 9. The four targets with the most clearly defined jetted emission, which enable common jet properties to be derived. The top row shows the VLA 6 GHz images, where the blue contours are from the *e*-MERLIN natural-weighted images. The VLA 6 GHz images are represented by red contours in all panels. The middle row shows the natural-weighted *e*-MERLIN images and the bottom row shows the *e*-MERLIN tapered images. The components used for calculations are labelled in the middle row (see Section 4.3).

their relative inclination angle with respect to the host galaxies (e.g. Mukherjee et al. 2018; Mandal et al. 2021; Webster et al. 2021; Tanner & Weaver 2022; Miranda Marques et al. 2025). Indeed, if low-powered jets remain trapped in the ISM for a longer time, they interact with the ISM over a large volume, evacuating cavities upto $r \sim 1$ kpc and only leaving the densest cores (Mukherjee et al. 2016). Therefore, studying these low-powered jets ($P_{\text{jet}} \lesssim 10^{44}$ erg s $^{-1}$) are crucial in our understanding of the feedback mechanisms at galactic scales (e.g. Harrison et al. 2015; Kharb & Silpa 2023).

With all this in mind, we estimate jet properties (speeds, inclination angles, and powers) using our *e*-MERLIN maps, for the systems where this is possible. The disrupted nature of low power jets means that standard approaches to calculate jet powers and inclination angles can be challenging, due to a lack of clearly defined structures. Nonetheless, aligned multi-components in radio quiet quasars are also thought to be termination points of radio jets (e.g. Leipski et al. 2006), and we identify the four targets with the strongest evidence for such structures, which allow us to perform typical types of jet measurements done in the literature. These are the four sources shown in Fig. 9.

We estimate the jet kinetic power for all the four targets using the jet radiative efficiency empirical formula of Merloni & Heinz (2007):

$$\log P_{\text{jet}} = (0.81 + 0.11) \times \log L_{6\text{GHz}} + 11.9^{+4.1}_{-4.4} \quad (2)$$

We derive jet-to-counterjet surface brightness ratios, R_J , for these sources, assuming that the asymmetries in surface brightness are due to Doppler boosting and dimming effects in approaching and receding jets, respectively. We also calculate the jet inclination angles using the K-corrected radio core prominence parameter, R_C , following equation (C2) in Urry & Padovani (1995); it is assumed that the core has a spectral index of 0 and the extended emission of -1 .

$$R_C = (S_{\text{core}}/S_{\text{ext}})(1+z)^{-1} = (S_{\text{core}}/(S_{\text{tot}} - S_{\text{core}}))(1+z)^{-1}.$$

For the estimation of the K-corrected R_C , we have used the core flux density from the *e*-MERLIN images while the total flux density was estimated using the VLA images. The AIPS verbs TVMAXF and TVSTAT were used to derive the core and total flux densities, respectively. Following the work of Kharb & Shastri (2004), we have attempted to use the R_C parameters to determine jet inclinations in the four jetted sources. Kharb & Shastri (2004) had estimated

R_C values for a large sample of both plane-of-sky radio galaxies as well as their pole-counterparts, i.e. the blazars, and found that the $\log R_C$ values varied roughly from -4 to $+4$ for jet inclinations respectively going from 90° to 0° . Furthermore, in the absence of multi-epoch observations to calculate proper motions, using the R_J values, we have derived jet speeds using equation (A10) in Urry & Padovani (1995); that is, $\beta \cos \theta = \frac{R_J^{1/p} - 1}{R_J^{1/p} + 1}$. The jet structural parameter, p is assumed to be $= 3$ for a ‘continuous’ jet. We apply these calculations to the four most applicable systems, as follows:

(i) J0759 + 5050 shows a two-sided jet structure. We derived a K-corrected $\log R_C$ value of ~ -1.2 ($S_{\text{core}} = 866 \mu\text{Jy}$, $S_{\text{total}} = 12.95 \text{ mJy}$). We note that this source in particular did not show a clear compact ‘core’ in its *e*-MERLIN image. We used the AIPS verb CURV to read off the flux density of the brightest pixel. A jet inclination of 60° is implied. Using the emission from a ‘hotspot’ in the counterjet towards the north-west and a similar ‘hotspot’ in the counterjet towards the south-east, we derive an $R_J = 15.5$. For an inclination angle of 60° , a jet speed of $0.85c$ is needed to explain the R_J value. We estimate a jet power of $\sim 10^{45.4} \text{ erg s}^{-1}$.

(ii) J0802 + 4643, shows two bright and compact components and an aligned plume of diffuse emission extended to the south west. In this case, component ‘b’ is assumed to be the core and component ‘a’ a hotspot in the approaching jet. We derive a K-corrected $\log R_C$ value of ~ -0.8 ($S_{\text{core}} = 467 \mu\text{Jy}$, $S_{\text{total}} = 3.13 \text{ mJy}$) and a jet inclination of 55° . Using the counterjet surface brightness at a distance roughly equidistant from the core, a jet-to-counterjet surface brightness ratio can be derived; this turns out to be $R_J = 3.2$. For the jet inclination angle of 55° , this would imply a jet speed of $0.33c$. We estimate a jet power of $\sim 10^{43.8} \text{ erg s}^{-1}$.

(iii) J0958 + 1439, shows a double symmetric radio structure in VLA images. At the sub-kiloparsec scales of *e*-MERLIN, the extended emission is resolved out revealing 4 faint but distinct components. We note that the tapered image shows a well collimated radio jet connecting the northern components (a,b,c) to the southern component (d). Component ‘d’ is assumed to be associated with the approaching jet and ‘a’ with the counterjet. We derive a K-corrected $\log R_C$ value of ~ -1.2 ($S_{\text{core}} = 157 \mu\text{Jy}$, $S_{\text{total}} = 2.32 \text{ mJy}$) and a jet inclination of 60° . We also derive an $R_J = 1.7$, which would suggest a jet speed of $0.18c$ for the jet inclination angle of 60° . We estimate a jet power of $\sim 10^{43.5}$.

(iv) J1316 + 1753 shows two lobes separated by $\sim 2 \text{ kpc}$ in the VLA images, whereas these side-lobes are resolved out at sub-kiloparsec to reveal two radio knots. Component ‘a’ is assumed to be the core, knot ‘b’ is jet and counterjet is not clearly detected. Therefore, we can derive a lower limit to the jet-to-counterjet surface brightness ratio of $R_J \geq 2.4$. We derive a K-corrected $\log R_C$ value of ~ -0.8 ($S_{\text{core}} = 337 \mu\text{Jy}$, $S_{\text{total}} = 2.17 \text{ mJy}$) and a jet inclination of 55° . For this inclination angle, the lower limit to the jet speed would be $0.25c$. We note that the jet inclination derived here differs from the 45° derived for J1316 + 1753 earlier by Girdhar et al. (2022). This is because Girdhar et al. (2022) had used the 5.2 GHz VLA core flux density for estimating the R_C without K-correction; the *e*-MERLIN core flux density used here is less contaminated by jet emission close to the core. We estimate a jet power of $\sim 10^{43.6} \text{ erg s}^{-1}$.

Three of these four targets have moderate inferred jet speeds of $\sim (0.2-0.3)c$, which have indeed been derived or observed to be common in other radio-quiet quasars in the literature (e.g. Sbarrato et al. 2021; Wang et al. 2021, 2023). While their radio-loud counterparts often produce highly relativistic speeds, the jets in radio-quiet AGN are generally slower and high resolution radio

imaging have revealed jet components moving at sub-relativistic speeds in these objects, and could even be regarded as outflows or ‘winds’ (Stocke et al. 1992; Wang et al. 2021; Fischer et al. 2023). Future work comparing such derived jet properties to measurements of the host galaxy ISM, will help assess the efficiency of jet-ISM interactions (e.g. following Girdhar et al. 2022).

4.4 Comparison to other radio AGN populations

We have identified a large fraction of radio AGN in our sample of optically selected type 1 and type 2 quasars. Our sources are predominantly compact on $\lesssim 1 \text{ kpc}$ scales. Therefore, we discuss the relationship between our quasar sample to other similar compact radio-emitting AGN such as Seyferts, compact steep-spectrum sources (CSS), gigahertz-peaked spectrum (GPS) sources and FR0s (An & Baan 2012; O’Dea & Saikia 2021; Baldi 2023). At a few $\sim \text{GHz}$ frequencies, the *e*-MERLIN has sufficient resolution to probe Seyferts (and other low luminosity radio AGN) due to their faint nature (at a few millijanskys) and $< 1 \text{ kpc}$ in size, by minimising the contribution of the host galaxy and resolving out sub-kiloparsec to parsec-scale radio cores and knots as seen in this work and other similar probes (e.g. Thean et al. 2000; Baldi et al. 2021a, b).

For example, FR0s sources have similar properties to FRIs but are a factor of ~ 30 more core-dominated than FRIs and remain featureless on kiloparsec scales (Baldi, Capetti & Giovannini 2016; Hardcastle & Croston 2020; Baldi 2023). Indeed, comparing the radio morphology of our sample to the radio morphology of FR0s sources in the literature, at several kiloparsec scales, most of our sample remains compact and unresolved as is the case with FR0s. However, at a few kiloparsec ($1-3 \text{ kpc}$) scales, a third of the sample shows one-sided or two-sided core-jets with ~ 80 per cent of the sources showing steep spectrum (< -0.7) in VLA (Jarvis et al. 2021). A similar result is reported in Baldi, Capetti & Giovannini (2015) and Baldi et al. (2019) for FR0s, where only a third of their sample exhibits double or one-sided radio jets at an angular resolution of about $0''.3$. Furthermore, at sub-kiloparsec scales, FR0s show a range of diverse radio properties and radio morphologies from steep to flat spectral indices and multicomponents with luminosities $10^{22} - 10^{24} \text{ WHz}^{-1}$ (Baldi et al. 2016). At these sub-kiloparsec scales probed by *e*-MERLIN, our sample mainly shows compact radio jets (one-sided or multicomponent radio knots) at $\sim < 0.5 \text{ kpc}$ or unresolved compact cores with radio luminosities similar to the ones reported in Baldi et al. (2016). Two-thirds of our sample appear to be slightly core dominated at $\geq 1/3$ of the total emission (see Fig. 8). Baldi et al. (2021b) combine both the VLA and *e*-MERLIN data of similar objects to reveal sub-kiloparsec jets and conclude that FR0s harbour sub-kiloparsec scale radio jets whose low surface brightness make it difficult to detect and isolate in typical data sets.

Our targets have projected linear size of $< 500 \text{ pc}$ in *e*-MERLIN, which covers the GPS size region (see reviews by O’Dea 1998; O’Dea & Saikia 2021). Furthermore, following the power versus linear size diagram of Hardcastle & Croston (2020) and Jarvis et al. (2019), our quasars lie on the lower end of the radio power for the GPS and CSS objects. The two multicomponent sources, J0802 + 4643 and J1317 + 1753 (see Fig. 9), show compact symmetric radio structure with well-defined and confined side lobes. The distances between the two lobes is 365 pc in J0802 + 4643 (also see Fig. 2) and 1 kpc in J1317 + 1753, with spectral indices of $\alpha \sim -1.4$ and -1.2 , respectively (from Jarvis et al. 2021). Based on the double-lobe radio morphology, the projected linear size of $< 1 \text{ kpc}$ and the steep spectra, these two sources would qualify as GPS/CSS objects. The source J0802 + 4643 is a likely GPS ($D \sim 364 \text{ pc}$) source with

a frustrated jet within the ISM as indicated by the plume-like diffuse radio emission located at a considerable distance away from the two hotspots (e.g. An & Baan 2012; McCaffrey et al. 2022). On the other hand, the source J1317 + 1753 is a likely CSS object ($D \sim 1$ kpc) representing the young revolutionary phase of a galaxy that might later evolve into an FR-II source as reported in An & Baan (2012). Whilst probed at ~ 6 kpc, McCaffrey et al. (2022) shows a similar (and first) FRII-like radio quiet quasar with $L_{6\text{GHz}} \approx 10^{22.9}$ W Hz^{-1} at kiloparsec scales. We also note that side lobes remained unresolved at \sim kpc scales and due to lack of ancillary data, the source was not classified as radio-AGN in Jarvis et al. (2021). Additionally, the most luminous object (J1347 + 1217) in our sample at $L_{6\text{GHz}} \sim 7.0 \times 10^{25}$ W Hz^{-1} , is a confirmed GPS source and is reported as a rejuvenated radio object (Morganti et al. 2013; O’Dea & Saikia 2021).

The extended radio structures of radio-quiet quasars at sub-arcsecond resolution are by no means different from that of Seyferts as reported in Leipski et al. (2006). Among the luminosities studied here, the morphological features and radio sizes are found to be similar in both types of objects and there is no significant differences between the radio luminosities of the type 1 and type 2 sources as shown in Fig. 5. Although, type 2 sources show a significant correlation between radio power and radio sizes, with these targets showing evidence of collimated radio structures that are also reported in Thean et al. (2001). We note that all our multicomponent sources (in Fig. 9) showing well collimated radio structures are of type 2 and radio-quiet quasars. Whilst type 1 sources show no significant correlation, we also note that a large fraction of our type 1 sources are classified as ‘compact’ based on their radio morphology. There is no statistical difference in the size distribution of both type 1 and type 2 sources, indicating that the central engines for each type are similar and both equally contribute to the extended emission (Thean et al. 2000, 2001; Pierce, Tadhunter & Morganti 2020). This supports the argument in the literature that radio-quiet quasars are scaled-up versions of Seyfert galaxies (e.g. Kukula et al. 1998; Chiaraluce et al. 2019). Furthermore, Baldi et al. (2021a, b) show that the compact and edge-brightened radio jet morphology observed in Seyferts can be attributed to the low-powered nature of the slow jets and disc/corona winds in disc/spiral galaxies that host lower spinning black holes, which hinder launching of faster jets. Therefore, the relatively small amount of radiative energy ($P_{\text{jet}} \approx \times 10^{43}$ erg s^{-1}) emerging at radio wavelengths in these radio quiet quasars, may simply be due to the presence of less powerful radio jets (Ulvestad, Antonucci & Barvainis 2005).

As is typical across the quasar population, ~ 90 per cent of our sample is radio-quiet based on traditional definitions. However, these prevalent radio-AGN appear to be a natural extension of ‘high-luminosity’ for Seyferts and ‘low-luminosity’ for CSS/GPS objects (also see fig. 2 in Hardcastle & Croston 2020). Similarly, Chilufya et al. (2024) find that their sample of low-luminosity radio-loud AGN share the same region in the radio luminosity versus size diagram with radio-quiet quasars and FR0s, and show similar properties in spectra to GPS and CSS objects. As the literature shows, based on samples selected from a variety of different criteria, it is increasingly difficult to separate these radio populations into distinct classes based on their radio morphology and luminosity (e.g. Mingo et al. 2019, 2022; Harwood et al. 2020; Capetti et al. 2020; Pierce et al. 2020; Gürkan et al. 2021; Kumari & Pal 2022; Stroe et al. 2022; Chilufya et al. 2024). Perhaps a more general question is if these radio quiet quasars (like those studied here) show similar radio properties to other low-luminosity compact radio objects and to their higher luminosity counterparts. Future studies could focus

on spectral energy distributions and polarisation measurements to further probe the differences, if any, across these low-luminosity compact radio AGN populations (e.g. Jayakumar 2016; Silpa et al. 2022; Meenakshi et al. 2024).

5 CONCLUSION

We present a sample of 42 low redshift $z < 0.2$ type 1 and type 2 quasars observed with *e*-MERLIN at 6 GHz. These targets have moderate radio luminosities, and the sample is dominated by ‘radio quiet’ quasars, based on the [O III] to radio luminosity ratio (Fig. 1). The new *e*-MERLIN data enabled us to measure radio structures on $\sim 10\text{s}–100\text{s}$ pc scales, which is an order of magnitude smaller than the structures measured in the existing VLA images of these targets (e.g. in Fig. 2). Our main conclusions are:

(i) The targets show a wide range of morphology on sub-kiloparsec scales, with compact cores, knots, extended collimated structures, and more diffuse structures. Based on visual inspection only, 15/42 (35 per cent) targets are classified as compact sources as they show no extended radio features, 21/42 (50 per cent) targets are classified as jet-like since they show either one-sided jets or well collimated multiple radio components and 1/42 source has an irregular morphology. 5/42 targets were not detected in the maps and 5/37 of the detected sources show multiple distinct (2–4) radio peaks and are thus referred to as multicomponent sources (Fig. 3).

(ii) We measured the properties of the structures identified in the *e*-MERLIN maps. The projected linear sizes range from ~ 30 to 540 pc, with a median size of ~ 147 pc, excluding the 10 components that remained unresolved on these scales (Fig. 4). These structures typically have modest luminosities, with $L_{6\text{GHz}} \sim 10^{22}–10^{24}$ W Hz^{-1} (with only 2 higher), and we found no evidence of significant differences in these properties between the type 1 and type 2 quasars (Fig. 5).

(iii) Although there is a large variety across the sample, we found that a significant fraction of the total radio luminosity in this sample is typically not located in the compact, sub-kiloparsec structures traced by *e*-MERLIN. Indeed, most targets have moderate brightness temperatures, with only 13–21 targets showing clear evidence for AGN-like values (i.e. $T_B > 10^{4.8}$ K; Fig. 6). This corresponds to 31–50 per cent, with the range due to some targets only having an upper limits on their sizes. Furthermore, under the assumption that NVSS traces the total radio luminosity, we find that, on average, ~ 60 per cent of the radio luminosity is resolved away on sub-kiloparsec scales traced by *e*-MERLIN (Fig. 8). Previous VLA maps of the same targets show that this resolved-away emission can be sometimes located in diffuse, loosely collimated lobes, likely associated with AGN jets or outflows (Fig. 7).

(iv) By combining diagnostics of brightness temperature and morphology, we identified radio AGN activity in 32/42 (76 per cent) of the sample (Fig. 6). This is an increase in ~ 57 per cent, based only on the VLA maps, thanks to the increased constraints on morphology and brightness temperatures at the higher resolution of *e*-MERLIN. None the less, 4 additional targets are only identified as AGN based on the VLA maps (not *e*-MERLIN) due to large-scale structures being resolved away (Fig. 7), bringing the total number of radio AGN being identified in the sample to be 36/42 (86 per cent).

(v) For the four targets that showed sufficiently defined jet structures (see Fig. 9), we estimated the jet properties. For three sources, the jet speeds and powers are estimated to be modest, with values of $\sim 0.2–0.3$ c and $P_{\text{jet}} \approx (3–6) \times 10^{43}$ erg s^{-1} , respectively. If jets are

driving the radio emission across the majority of the sample, this implies modest jet speeds and modest powers are common. The lack of defined structures in the majority of the sample (cores, jets, and counter-jets) could be partly related to disruption/dissipation by ISM interactions, or a larger contribution to the radio emission from outflows launched by wide-angle winds.

Our results highlight the importance of using a wide range of radio images (tracing sub-kiloparsec scales through to 10s of kiloparsec scales), to obtain a full characterization of the radio morphologies in a representative sample of quasars. Through these data, we find a high prevalence of radio emission associated with an AGN (~90 per cent) for a sample that is traditionally characterized as ‘radio quiet’. The sample shares many radio properties with other AGN populations, including Seyferts AGN, FR0s, and GPS/CSS sources; highlighting limited evidence for these being distinct populations.

This work adds to the growing evidence, by studying low-redshift systems, the importance of using sensitive radio imaging, down to sub-kiloparsec scales, to study AGN feedback mechanisms on galactic scales, even in low–moderate radio luminosity systems. We advocate for similar work in objects at cosmic noon, where the bulk of black hole growth occurs. This will be important to establish the driving mechanisms of multiphase outflows that are now commonly identified at cosmic noon, but the bolometric AGN output is often assumed to be the most important driving factor. Indeed, combining *JWST* data with radio imaging already shows a radio-outflow connection in ‘radio quiet quasar’ (following our definition) at $z \sim 1.5$ (Cresci et al. 2023). Ongoing work to provide sensitive and high resolution radio imaging of large samples (e.g. Muxlow et al. 2020; Morabito et al. 2022; Njeri et al. 2024), and future work with new facilities (e.g. the Next Generation VLA and the Square Kilometre Array; Nyland et al. 2018), will be crucial to characterize the sub-galactic scale radio emission and compare to spatially resolved multiphase gas observations.

ACKNOWLEDGEMENTS

We thank the anonymous referee for their constructive report. We thank the *e*-MERLIN support staff for assistance with these observations. *e*-MERLIN is a National Facility operated by the University of Manchester at Jodrell Bank Observatory on behalf of Science and Technology Facilities Council, part of UK Research and Innovation. AN and CMH acknowledge funding from an United Kingdom Research and Innovation grant (code: MR/V022830/1). SM acknowledges funding from The Royal Society through a Research Fellows Enhancement Award Grant (RF/ERE/221053). PK acknowledges the support of the Department of Atomic Energy, Government of India, under the project 12-R&D-TFR-5.02-0700. SS acknowledges financial support from Millenium Nucleus NCN23_002 (TITANs) and Comité Mixto ESO-Chile.

DATA AVAILABILITY

The raw *e*MERLIN data (as described in Section 2.2) is available via project code CY11205 at the following link: <https://www.e-merlin.ac.uk/distribute/CY11/CY11205/CY11205.html>. All the resulting maps produced for this work are available the following link: <https://doi.org/10.25405/data.ncl.c.7523193>. The displayed VLA maps are from Jarvis et al. (2021) and can be downloaded via <https://doi.org/10.25405/data.ncl.13416164> (*L*-band maps) and <https://doi.org/10.25405/data.ncl.13702021> (*C*-band maps).

REFERENCES

- Alhosani A., Gelfand J. D., Zaw I., Laor A., Behar E., Chen S., Wrzosek R., 2022, *ApJ*, 936, 73
- An T., Baan W. A., 2012, *ApJ*, 760, 77
- Baldi R. D., 2023, *A&AR*, 31, 3
- Baldi R. D., Capetti A., Giovannini G., 2015, *A&A*, 576, A38
- Baldi R. D., Capetti A., Giovannini G., 2016, *Astron. Nachr.*, 337, 114
- Baldi R. D. et al., 2018, *MNRAS*, 476, 3478
- Baldi R. D., Capetti A., Giovannini G., 2019, *MNRAS*, 482, 2294
- Baldi R. D. et al., 2021a, *MNRAS*, 500, 4749
- Baldi R. D. et al., 2021b, *MNRAS*, 508, 2019
- Behar E., Vogel S., Baldi R. D., Smith K. L., Mushotzky R. F., 2018, *MNRAS*, 478, 399
- Bicknell G. V., Mukherjee D., Wagner A. Y., Sutherland R. S., Nesvadba N. P. H., 2018, *MNRAS*, 475, 3493
- Boccardi B. et al., 2021, *A&A*, 647, A67
- Bower R. G., Benson A. J., Malbon R., Helly J. C., Frenk C. S., Baugh C. M., Cole S., Lacey C. G., 2006, *MNRAS*, 370, 645
- Bridle A. H., Perley R. A., 1984, *ARA&A*, 22, 319
- Burke B. F., Graham-Smith F., Wilkinson P. N., 2019, *An Introduction to Radio Astronomy*. Cambridge Univ. Press, Cambridge
- Calistro Rivera G. et al., 2024, *A&A*, 691, A191
- Capetti A. et al., 2020, *A&A*, 642, A107
- Cattaneo A. et al., 2009, *Nature*, 460, 213
- Chen S., Laor A., Behar E., Baldi R. D., Gelfand J. D., 2023, *MNRAS*, 525, 164
- Chen S., Laor A., Behar E., Baldi R. D., Gelfand J. D., Kimball A. E., 2024a, preprint ([arXiv:2410.07889](https://arxiv.org/abs/2410.07889))
- Chen S. et al., 2024b, *ApJ*, 963, 32
- Chen S. et al., 2024c, *ApJ*, 975, 35
- Chiaraluce E., Bruni G., Panessa F., Giroletti M., Orienti M., Rampadarath H., Vagnetti F., Tombesi F., 2019, *MNRAS*, 485, 3185
- Chilufya J., Hardcastle M. J., Pierce J. C. S., Croston J. H., Mingo B., Zheng X., Baldi R. D., Röttgering H. J. A., 2024, *MNRAS*, 529, 1472
- Choi E., Somerville R. S., Ostriker J. P., Naab T., Hirschmann M., 2018, *ApJ*, 866, 91
- Condon J. J., 1992, *ARA&A*, 30, 575
- Condon J. J., Condon M. A., Gisler G., Puschell J. J., 1982, *ApJ*, 252, 102
- Condon J. J., Cotton W. D., Greisen E. W., Yin Q. F., Perley R. A., Taylor G. B., Broderick J. J., 1998, *AJ*, 115, 1693
- Condon J. J., Kellermann K. I., Kimball A. E., Ivezić Ž., Perley R. A., 2013, *ApJ*, 768, 37
- Cresci G., Maiolino R., 2018, *Nat. Astron.*, 2, 179
- Cresci G. et al., 2023, *A&A*, 672, A128
- D’Amato Q. et al., 2022, *A&A*, 668, A133
- Dutta R., Sharma P., Sarkar K. C., Stone J. M., 2024, *ApJ*, 973, 148
- Fabian A. C., 2012, *ARA&A*, 50, 455
- Fawcett V. A. et al., 2023, *MNRAS*, 525, 5575
- Fischer T. C., Johnson M. C., Secrest N. J., Crenshaw D. M., Kraemer S. B., 2023, *ApJ*, 953, 87
- Giovannini G., Baldi R. D., Capetti A., Giroletti M., Lico R., 2023, *A&A*, 672, A104
- Girdhar A. et al., 2022, *MNRAS*, 512, 1608
- Girdhar A. et al., 2024, *MNRAS*, 527, 9322
- Glikman E. et al., 2022, *ApJ*, 934, 119
- Gürkan G., Croston J., Hardcastle M. J., Mahatma V., Mingo B., Williams W. L., 2021, *Galaxies*, 10, 2
- Haidar H. et al., 2024, *MNRAS*, 532, 4645
- Hansen S. P., Lagos C. D. P., Bonato M., Cook R. H. W., Davies L. J. M., Delvecchio I., Tompkins S. A., 2024, *MNRAS*, 531, 1971
- Hardcastle M. J., Croston J. H., 2020, *New Astron. Rev.*, 88, 101539
- Hardcastle M. J. et al., 2019, *A&A*, 622, A12
- Harrison C. M., 2017, *Nat. Astron.*, 1, 0165
- Harrison C. M., Ramos Almeida C., 2024, *Galaxies*, 12, 17
- Harrison C. M., Alexander D. M., Mullaney J. R., Swinbank A. M., 2014, *MNRAS*, 441, 3306

- Harrison C. M., Thomson A. P., Alexander D. M., Bauer F. E., Edge A. C., Hogan M. T., Mullaney J. R., Swinbank A. M., 2015, *ApJ*, 800, 45
- Harwood J. J., Vernstrom T., Stroe A., 2020, *MNRAS*, 491, 803
- Heckman T. M., Best P. N., 2014, *ARA&A*, 52, 589
- Henriques B. M. B., White S. D. M., Thomas P. A., Angulo R., Guo Q., Lemson G., Springel V., Overzier R., 2015, *MNRAS*, 451, 2663
- Herrera Ruiz N., Middelberg E., Norris R. P., Maini A., 2016, *A&A*, 589, L2
- Hirschmann M., Dolag K., Saro A., Bachmann L., Borgani S., Burkert A., 2014, *MNRAS*, 442, 2304
- Holden L. R., Tadhunter C., Audibert A., Oosterloo T., Ramos Almeida C., Morganti R., Pereira-Santaella M., Lamperti I., 2024, *MNRAS*, 530, 446
- Husemann B. et al., 2019, *ApJ*, 879, 75
- Hwang H.-C., Zakamska N. L., Alexandroff R. M., Hamann F., Greene J. E., Perrotta S., Richards G. T., 2018, *MNRAS*, 477, 830
- Jarvis M. E. et al., 2019, *MNRAS*, 485, 2710
- Jarvis M. E. et al., 2020, *MNRAS*, 498, 1560
- Jarvis M. E. et al., 2021, *MNRAS*, 503, 1780
- Jeyakumar S., 2016, *MNRAS*, 458, 3786
- Kellermann K. I., Sramek R. A., Schmidt M., Green R. F., Shaffer D. B., 1994, *AJ*, 108, 1163
- Kellermann K. I., Condon J. J., Kimball A. E., Perley R. A., Ivezić Ž., 2016, *ApJ*, 831, 168
- Kharb P., Shastri P., 2004, *A&A*, 425, 825
- Kharb P., Silpa S., 2023, *Galaxies*, 11, 27
- Kharb P., Subramanian S., Das M., Vaddi S., Paragi Z., 2021, *ApJ*, 919, 108
- Kimball A. E., Kellermann K. I., Condon J. J., Ivezić Ž., Perley R. A., 2011, *ApJ*, 739, L29
- King A., Pounds K., 2015, *ARA&A*, 53, 115
- Klöckner H. R., Martínez-Sansigre A., Rawlings S., Garrett M. A., 2009, *MNRAS*, 398, 176
- Kukreti P., Morganti R., 2024, *A&A*, 690, A140
- Kukula M. J., Dunlop J. S., Hughes D. H., Rawlings S., 1998, *MNRAS*, 297, 366
- Kumari S., Pal S., 2022, *MNRAS*, 514, 4290
- Laing R. A., Bridle A. H., 2015, in Massaro F., Cheung C. C., Lopez E., Siemiginowska A., eds, *Proc. IAU Symp. 313, Extragalactic Jets from Every Angle*. Kluwer, Dordrecht, p. 108
- Lansbury G. B., Jarvis M. E., Harrison C. M., Alexander D. M., Del Moro A., Edge A. C., Mullaney J. R., Thomson A. P., 2018, *ApJ*, 856, L1
- Laor A., Behar E., 2008, *MNRAS*, 390, 847
- Leipski C., Falcke H., Bennert N., Hüttemeister S., 2006, *A&A*, 455, 161
- Liao M., Wang J., Ren W., Zhou M., 2024, *MNRAS*, 528, 3696
- Luo Q., Sadler E. M., 2010, *ApJ*, 713, 398
- Mandal A., Mukherjee D., Federrath C., Nesvadba N. P. H., Bicknell G. V., Wagner A. Y., Meenakshi M., 2021, *MNRAS*, 508, 4738
- McCaffrey T. V., Kimball A. E., Momjian E., Richards G. T., 2022, *AJ*, 164, 122
- Meenakshi M., Mukherjee D., Bodo G., Rossi P., Harrison C. M., 2024, *MNRAS*, 533, 2213
- Merloni A., Heinz S., 2007, *MNRAS*, 381, 589
- Middelberg E., Agudo I., Roy A. L., Krichbaum T. P., 2007, *MNRAS*, 377, 731
- Mingo B. et al., 2019, *MNRAS*, 488, 2701
- Mingo B. et al., 2022, *MNRAS*, 511, 3250
- Miranda Marques B. L., Rodríguez-Ardila A., Fonseca-Faria M. A., Panda S., 2025, *ApJ*, 978, 16
- Molyneux S. J. et al., 2024, *MNRAS*, 527, 4420
- Morabito L. K. et al., 2022, *MNRAS*, 515, 5758
- Morganti R., Fogasy J., Paragi Z., Oosterloo T., Orienti M., 2013, *Science*, 341, 1082
- Morganti R., Murthy S., Guillard P., Oosterloo T., Garcia-Burillo S., 2023, *Galaxies*, 11, 24
- Mukherjee D., Bicknell G. V., Sutherland R., Wagner A., 2016, *MNRAS*, 461, 967
- Mukherjee D., Bicknell G. V., Wagner A. Y., Sutherland R. S., Silk J., 2018, *MNRAS*, 479, 5544
- Mullaney J. R., Alexander D. M., Fine S., Goulding A. D., Harrison C. M., Hickox R. C., 2013, *MNRAS*, 433, 622
- Muxlow T. W. B. et al., 2020, *MNRAS*, 495, 1188
- Nims J., Quataert E., Faucher-Giguère C.-A., 2015, *MNRAS*, 447, 3612
- Njeri A. et al., 2023, *MNRAS*, 519, 1732
- Njeri A., Deane R. P., Radcliffe J. F., Beswick R. J., Thomson A. P., Muxlow T. W. B., Garrett M. A., Harrison C. M., 2024, *MNRAS*, 528, 6141
- Nyland K. et al., 2018, *ApJ*, 859, 23
- O'Dea C. P., 1998, in Zensus J. A., Taylor G. B., Wrobel J. M., eds, *ASP Conf. Ser. Vol. 144, IAU Colloq. 164: Radio Emission from Galactic and Extragalactic Compact Sources*. Astron. Soc. Pac., San Francisco, p. 291
- O'Dea C. P., Baum S. A., 1997, *AJ*, 113, 148
- O'Dea C. P., Saikia D. J., 2021, *A&AR*, 29, 3
- Orienti M., Prieto M. A., 2010, *MNRAS*, 401, 2599
- Padovani P., 2016, *A&AR*, 24, 13
- Panessa F., Baldi R. D., Laor A., Padovani P., Behar E., McHardy I., 2019, *Nat. Astron.*, 3, 387
- Perley R. A., Butler B. J., 2017, *ApJS*, 230, 7
- Perucho M., Martí J. M., Laing R. A., Hardee P. E., 2014, *MNRAS*, 441, 1488
- Petley J. W. et al., 2024, *MNRAS*, 529, 1995
- Pierce J. C. S., Tadhunter C. N., Morganti R., 2020, *MNRAS*, 494, 2053
- Pillepich A. et al., 2018, *MNRAS*, 475, 648
- Rakshit S., Woo J.-H., 2018, *ApJ*, 865, 5
- Reeves J. N. et al., 2009, *ApJ*, 701, 493
- Riffel R. A., Storchi-Bergmann T., Riffel R., 2014, *ApJ*, 780, L24
- Rosario D. J., Whittle M., Nelson C. H., Wilson A. S., 2010, *MNRAS*, 408, 565
- Rosario D. J., Alexander D. M., Moldon J., Klindt L., Thomson A. P., Morabito L., Fawcett V. A., Harrison C. M., 2021, *MNRAS*, 505, 5283
- Rusinek K., Sikora M., Koziel-Wierzbowska D., Gupta M., 2020, *ApJ*, 900, 125
- Sabater J. et al., 2019, *A&A*, 622, A17
- Saikia D. J., 2022, *JA&A*, 43, 97
- Santoro F., Tadhunter C., Baron D., Morganti R., Holt J., 2020, *A&A*, 644, A54
- Sbarrato T., Ghisellini G., Giovannini G., Giroletti M., 2021, *A&A*, 655, A95
- Schaye J. et al., 2015, *MNRAS*, 446, 521
- Shen Y., Ho L. C., 2014, *Nature*, 513, 210
- Silpa S., Kharb P., Ho L. C., Ishwara-Chandra C. H., Jarvis M. E., Harrison C., 2020, *MNRAS*, 499, 5826
- Silpa S., Kharb P., Harrison C. M., Girdhar A., Mukherjee D., Mainieri V., Jarvis M. E., 2022, *MNRAS*, 513, 4208
- Silpa S., Kharb P., Ho L. C., Harrison C. M., 2023, *ApJ*, 958, 47
- Singha M. et al., 2023, *ApJ*, 959, 107
- Smith K. L. et al., 2020, *MNRAS*, 492, 4216
- Speranza G. et al., 2024, *A&A*, 681, A63
- Stoeke J. T., Morris S. L., Weymann R. J., Foltz C. B., 1992, *ApJ*, 396, 487
- Stroe A., Catlett V., Harwood J. J., Vernstrom T., Mingo B., 2022, *ApJ*, 941, 136
- Tadhunter C., 2016, *A&AR*, 24, 10
- Tadhunter C., Morganti R., Rose M., Onk J. B. R., Oosterloo T., 2014, *Nature*, 511, 440
- Tanner R., Weaver K. A., 2022, *AJ*, 163, 134
- Thean A., Pedlar A., Kukula M. J., Baum S. A., O'Dea C. P., 2000, *MNRAS*, 314, 573
- Thean A., Pedlar A., Kukula M. J., Baum S. A., O'Dea C. P., 2001, *MNRAS*, 325, 737
- Ulivi L. et al., 2024, *A&A*, 685, A122
- Ulvestad J. S., Antonucci R. R. J., Barvainis R., 2005, *ApJ*, 621, 123
- Urry C. M., Padovani P., 1995, *PASP*, 107, 803
- van Breugel W., Miley G., Heckman T., 1984, *AJ*, 89, 5
- Venturi G. et al., 2021, *A&A*, 648, A17
- Venturi G. et al., 2023, *A&A*, 678, A127
- Villar Martín M., Emonts B., Humphrey A., Cabrera Lavers A., Binette L., 2014, *MNRAS*, 440, 3202
- Wang J., Xu D. W., Wei J. Y., 2018, *ApJ*, 852, 26
- Wang A., An T., Jaiswal S., Mohan P., Wang Y., Baan W. A., Zhang Y., Yang X., 2021, *MNRAS*, 504, 3823

- Wang A., An T., Zhang Y., Cheng X., Ho L. C., Kellermann K. I., Baan W. A., 2023, *MNRAS*, 525, 6064
- Webster B. et al., 2021, *MNRAS*, 500, 4921
- White S. V., Jarvis M. J., Kalfountzou E., Hardcastle M. J., Verma A., Cao Orjales J. M., Stevens J., 2017, *MNRAS*, 468, 217
- Williams D. R. A. et al., 2023, preprint ([arXiv:2303.08647](https://arxiv.org/abs/2303.08647))
- Wylezalek D., Morganti R., 2018, *Nat. Astron.*, 2, 181
- Xu C., Livio M., Baum S., 1999, *AJ*, 118, 1169
- Yamada T., Sakai N., Inoue Y., Michiyama T., 2024, *ApJ*, 968, 116
- Zakamska N. L. et al., 2016, *MNRAS*, 459, 3144
- Zakamska N. L., Greene J. E., 2014, *MNRAS*, 442, 784
- Zakamska N. L., Strauss M. A., Heckman T. M., Ivezić Ž., Krolik J. H., 2004, *AJ*, 128, 1002

SUPPORTING INFORMATION

Supplementary data are available at [MNRAS](https://academic.oup.com/mnras/article/537/2/705/7945806) online.

Please note: Oxford University Press is not responsible for the content or functionality of any supporting materials supplied by the authors. Any queries (other than missing material) should be directed to the corresponding author for the article.

This paper has been typeset from a $\text{\TeX}/\text{\LaTeX}$ file prepared by the author.