



This is a repository copy of *Changing demand for New York yellow cabs during the COVID-19 pandemic*.

White Rose Research Online URL for this paper:

<https://eprints.whiterose.ac.uk/215554/>

Version: Published Version

---

**Article:**

Manley, E. [orcid.org/0000-0002-8904-0513](https://orcid.org/0000-0002-8904-0513), Ross, S. and Zhuang, M. [orcid.org/0000-0002-4546-1033](https://orcid.org/0000-0002-4546-1033) (2021) Changing demand for New York yellow cabs during the COVID-19 pandemic. Findings. ISSN 2652-0397

<https://doi.org/10.32866/001c.22158>

---

**Reuse**

This article is distributed under the terms of the Creative Commons Attribution-ShareAlike (CC BY-SA) licence. This licence allows you to remix, tweak, and build upon the work even for commercial purposes, as long as you credit the authors and license your new creations under the identical terms. All new works based on this article must carry the same licence, so any derivatives will also allow commercial use. More information and the full terms of the licence here: <https://creativecommons.org/licenses/>

**Takedown**

If you consider content in White Rose Research Online to be in breach of UK law, please notify us by emailing [eprints@whiterose.ac.uk](mailto:eprints@whiterose.ac.uk) including the URL of the record and the reason for the withdrawal request.



[eprints@whiterose.ac.uk](mailto:eprints@whiterose.ac.uk)  
<https://eprints.whiterose.ac.uk/>

## TRANSPORT FINDINGS

# Changing Demand for New York Yellow Cabs during the COVID-19 Pandemic

Ed Manley<sup>1</sup> , Stuart Ross<sup>2</sup>, Mengdie Zhuang<sup>3</sup><sup>1</sup> Geography, University of Leeds, <sup>2</sup> Leeds Institute for Data Analytics, University of Leeds, <sup>3</sup> Centre for Advanced Spatial Analysis, University College London

Keywords: urban mobility, covid-19, taxis, travel behaviour

<https://doi.org/10.32866/001c.22158>

---

## Findings

---

The COVID-19 pandemic has had a profound impact on the life of our cities. While we have observed major disruption to collective activity, aspects of urban life have continued. In this study, we explore the changed spatiotemporal nature of mobility demand. Through a comparative analysis of New York City taxi records data, we observe how relative demand for taxis has displaced across land use zones and concentrated during daylight hours. We also find changes in payment methods that counter public health advice. These findings point to the fundamental mobility needs during the pandemic.

## Questions

The COVID-19 pandemic had a far-reaching impact on urban dynamics – bringing established patterns of movement (Zhong et al. 2016) and vibrancy (Sulis et al. 2018) to a halt. Mobility data have revealed the extent to which lockdown policies have affected regional activity (Abdullah et al. 2020; Jenelius and Cebecauer 2020; Gao et al. 2021). While a couple of studies have addressed the impact of the pandemic on taxi travel (Nian et al. 2020; Ale-Ahmad and Mahmassani 2020), there has been limited exploration of interactions with urban geographies (economic, demographics, etc.) at finer spatial and temporal scales. It is important to understand the nature of the continued, fundamental role of urban transport systems in the midst of the pandemic, despite absolute reductions in demand.

This paper describes the relative demand for taxis in New York City during the early stages of the COVID-19 pandemic. We assess the changing nature of travel and its relation to the city, with two key research questions in mind:

- How did relative demand for taxis shift both spatially and temporally during the early days of the pandemic?
- What do relative changes tell us about the nature of mobility in New York City during this period?

## Methods

We use publicly available taxi trip records to analyse changes in travel demand during the early stages of the pandemic. This data is released by the Taxi and Limousine Commission (TLC 2021), and for this analysis we focused on the Yellow Cab data, and only on trips originating or ending in Manhattan.

We have used two comparative periods of analysis. In 2020 we chose Monday 9th March to Sunday 7th June, which covers the beginning of a sharp ascent in case numbers in New York City (New York Times 2021), and prior to the restrictions on mass gathering (12<sup>th</sup> March), the imposition of school closures (16<sup>th</sup> March) and ‘shelter-in-place’ and business closure orders (22<sup>nd</sup> March) (New York Governor 2020). These restrictions were eased from the 8<sup>th</sup> June 2020. As a comparison, we used equivalent data from 2019, and the corresponding weeks (11-23), the dates of these being Monday 11th March to Sunday 9th June.

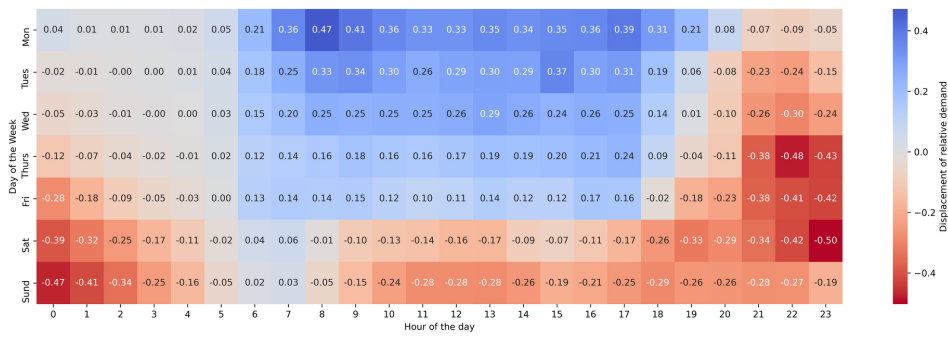
Our analysis plan covers empirical changes in pick-up departure times and locations during these time periods. *Relative demand* is calculated as the proportion of trips within a given spatial or temporal unit, relative to the sum of all trips. *Displacement* is a calculation of differences in relative demand between equivalent analysis periods in 2019 and 2020. We also measure changes in *payment types*, as a proportion of trips using card and cash, the two dominant modes, over each time period.

## Findings

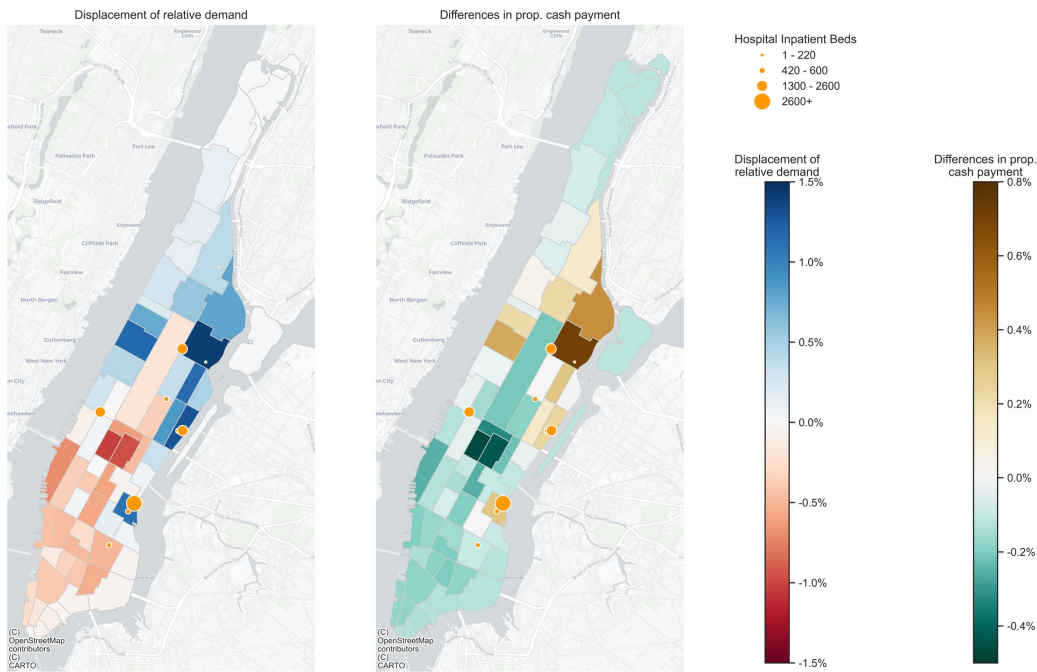
As expected from previous evidence, we observe a steep drop off in taxi demand during the two periods, reducing from 22,292,199 trips in 2019 to 1,882,670 trips in 2020, a 92% reduction. There are fewer passengers on each trip too, reducing from 1.57 passengers per trip on average in 2019 (where 70% were single-person trips), to 1.4 in 2020 (where 77% were single-person trips).

With respect to displacement in relative demand by hour and day of the week ([Figure 1](#)), we observe sharp drops (displacement < -20%) during late hours from Thursday evening, and both early and late hours from Friday throughout the weekend. The other evening hours of the week are either moderately less busy or similar ( -1% < displacement < 20%). We also observe positive relative changes in demand during core weekday working hours, particularly between 8am and 5pm on Monday to Wednesday. This increase in demand may be partly due to a choice made by some to avoid public transportation due to perceived health risks.

Exploring relative changes in demand over space, variation in relative demand is similar between pick-up and drop-off locations ([Figure 2A](#)). We observe negative to positive displacement in demand from south to north, away from commercial and hotel areas to residential neighbourhoods. There are furthermore indications of displacement aligning with the locations of major COVID-19 hospitals in Manhattan. We can observe displacement more discretely by analysing intersecting land use zone categories ([Table 1](#)). This again indicates a shift away from commercial and manufacturing towards residential activity, with trends extenuated around higher density regions. This analysis is performed assuming pickup rates per land use zone are determined assuming their distribution is uniform within each taxi zone.



**Figure 1.** Displacement of relative demand between weeks 11 – 23 of 2019 and 2020, by hour and day of the week.



**Figure 2. A:** Displacement of relative demand by pick-up locations, during week 11 – 23 between 2019 and 2020. **B:** Changes in proportion of cash payments by pick-up locations, during week 11 – 23 between 2019 and 2020.

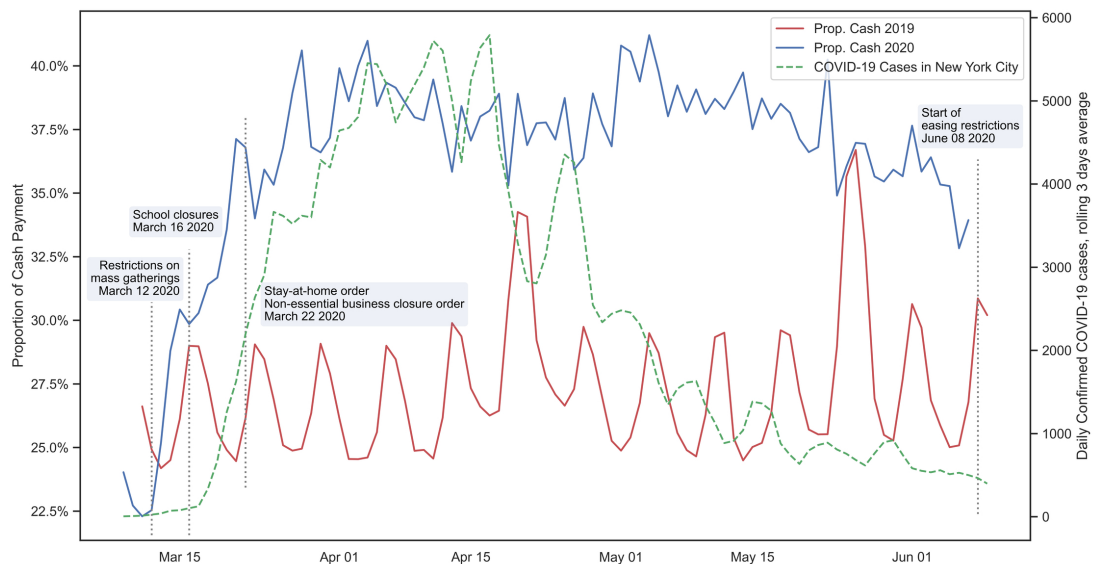
Orange dots are hospitals located in Manhattan and registered with Centers for Medicare & Medicaid Services (CMS) as of June 1, 2020 (Department of Health & Human Services 2020). In both cases, drop-off trends are nearly identical in distribution and scale, and therefore are not shown.

We furthermore observe a higher proportion of cash payments during the period, and a rate of change that aligns closely with the increasing severity of COVID-19 in New York City (Figure 3). This trend counters advice on reducing virus transmission (UK Government 2020), and points to possible non-adherence to advice in this context, driven by factors relating to the taxi (many Yellow Cab card terminals require physical interaction), or the redistribution of journeys and travellers. Spatial patterns in changes in cash payments (Figure 2B) indicate alignment with relative demand. Proportionate decreases in cash use align with central commercial districts, where tourist

**Table 1.** Displacement of relative demand in taxi pick-ups by ZoLa land use zone (NYC Planning, 2021).

Zone ID	Summary ZoLa Description	% Trips 2019	% Trips 2020	% Change
C6	High-bulk Commercial	25.65	17.55	-8.10
C5	Central Commercial District	14.05	9.74	-4.31
M1	Multi-story Lofts	5.56	4.29	-1.27
PA	Parks	9.38	9.92	0.54
C4	Regional Commercial Centres	2.95	3.92	0.98
C2	Mixed Commercial-Residential Use	4.04	5.54	1.51
C1	Mixed Commercial-Residential Use	7.95	9.52	1.57
R1	Low-density Residential	5.26	6.83	1.58
R7	Medium-density Residential Apartments	4.17	6.39	2.22
R8	Higher-density Residential Apartments	15.11	19.22	4.11

Drop-off trends are nearly identical and so not shown here. Only zone types with more than 2% of journeys in 2019 are shown.



**Figure 3.** Proportion of cash payment between weeks 11 – 23 of 2019 and 2020, daily confirmed COVID-19 cases in NYC (New York Times 2021), and major government public health interventions.

activity dropped significantly. Increases in cash use are observed in residential areas of East Harlem, an area home to relatively high Hispanic populations (46% in East Harlem neighbourhoods, 29% in New York City), more people on lower household incomes, and relatively high proportions of people relying on public transportation (71%, versus 56% for New York City) (NYC Planning 2021). The higher proportional change in this vicinity may reflect a modal shift to taxis in response to public transportation closures by un- and under-banked populations.

During our window of analysis, it appears that this behaviour change is ‘sticky’, as we observe no rapid return to 2019 levels of cash use despite significant drops in COVID-19 cases during this period. In more recent times our understanding of COVID-19 transmission has adapted towards a recognition that airborne transmission is a stronger vector than physical contact, and it would be interesting to explore how this understanding impacts future payment patterns.

The COVID-19 pandemic has impacted ‘normal’ urban life in a myriad of ways, and in many cases these impacts are more or less correlated with reductions in activities brought on by lockdown policies. As we can observe in the temporal shifts in taxi travel, there is a consolidation of activity during daytime hours, as the ‘City That Never Sleeps’ went into an unprecedented evening slumber. However, there are nuances within these reductions, pointing to the nature of urban mobility during this period. We can see that there is a continued need for access to healthcare, we can observe changes in payment patterns may reflect sentiment around transmission, and more trips are taken alone. These findings, combined with similar preliminary analyses (Teixeira and Lopes 2020; Gkiotsalitis and Cats 2020), provide evidence of behaviour change and travel demand that would be hard to reach through traditional approaches (e.g., surveys), and so have utility in adapting service planning and urban models in uncertain futures. Further work should explore more precise modelling of these effects, in reference to more detailed spatial statistics and accounting over time.

Submitted: January 17, 2021 AEST, Accepted: April 14, 2021 AEST



This is an open-access article distributed under the terms of the Creative Commons Attribution 4.0 International License (CCBY-SA-4.0). View this license’s legal deed at <https://creativecommons.org/licenses/by-sa/4.0> and legal code at <https://creativecommons.org/licenses/by-sa/4.0/legalcode> for more information.



## REFERENCES

- Abdullah, Muhammad, Charitha Dias, Deepti Muley, and Md. Shahin. 2020. "Exploring the Impacts of COVID-19 on Travel Behavior and Mode Preferences." *Transportation Research Interdisciplinary Perspectives* 8 (November): 100255. <https://doi.org/10.1016/j.trip.2020.100255>.
- Ale-Ahmad, H., and H.S. Mahmassani. 2020. "Impact of COVID-19 on Taxi Operation in Chicago." <https://www.transportation.northwestern.edu/docs/2020/20200501-report-taxiscovid19chicago.pdf>.
- Department of Health & Human Services. 2020. "COVID-19 Reported Patient Impact and Hospital Capacity by Facility." <https://healthdata.gov/dataset/covid-19-reported-patient-impact-and-hospital-capacity-facility>.
- Gao, Chanchan, Shuhui Li, Min Liu, Fengying Zhang, V. Achal, Yue Tu, Shiqing Zhang, and Chaolin Cai. 2021. "Impact of the COVID-19 Pandemic on Air Pollution in Chinese Megacities from the Perspective of Traffic Volume and Meteorological Factors." *Science of The Total Environment* 773 (June): 145545. <https://doi.org/10.1016/j.scitotenv.2021.145545>.
- Gkiotsalitis, Konstantinos, and Oded Cats. 2020. "Public Transport Planning Adaption under the COVID-19 Pandemic Crisis: Literature Review of Research Needs and Directions." *Transport Reviews*, December, 1–19. <https://doi.org/10.1080/01441647.2020.1857886>.
- Jenelius, Erik, and Matej Cebecauer. 2020. "Impacts of COVID-19 on Public Transport Ridership in Sweden: Analysis of Ticket Validations, Sales and Passenger Counts." *Transportation Research Interdisciplinary Perspectives* 8 (November): 100242. <https://doi.org/10.1016/j.trip.2020.100242>.
- New York Governor. 2020. "Governor Cuomo Signs the 'New York State on PAUSE' Executive Order." <https://www.governor.ny.gov/news/governor-cuomo-signs-new-york-state-pause-executive-order>.
- New York Times. 2021. "Coronavirus (Covid-19) Data in the United States," 2021. <https://github.com/nytimes/covid-19-data>.
- Nian, Guangyue, Bozhezi Peng, Daniel (Jian) Sun, Wenjun Ma, Bo Peng, and Tianyuan Huang. 2020. "Impact of COVID-19 on Urban Mobility during Post-Epidemic Period in Megacities: From the Perspectives of Taxi Travel and Social Vitality." *Sustainability* 12 (19): 7954. <https://doi.org/10.3390/su12197954>.
- NYC Planning. 2021. "Zoning Districts." <https://www1.nyc.gov/site/planning/zoning/districts-tools.page>.
- Sulis, P., E. Manley, C. Zhong, and M. Batty. 2018. "Using Mobility Data as Proxy for Measuring Urban Vitality." *Journal of Spatial Information Science* 2018 (16): 137–62.
- Teixeira, João Filipe, and Miguel Lopes. 2020. "The Link between Bike Sharing and Subway Use during the COVID-19 Pandemic: The Case-Study of New York's Citi Bike." *Transportation Research Interdisciplinary Perspectives* 6 (July): 100166. <https://doi.org/10.1016/j.trip.2020.100166>.
- TLC. 2021. "TLC Trip Record Data." <https://www1.nyc.gov/site/tlc/about/tlc-trip-record-data.page>.
- UK Government. 2020. "Working Safely during Coronavirus (COVID-19)." <https://www.gov.uk/guidance/working-safely-during-coronavirus-covid-19/shops-and-branches>.
- Zhong, C., M. Batty, E. Manley, J. Wang, Z. Wang, F. Chen, and G. Schmitt. 2016. "Variability in Regularity: Mining Temporal Mobility Patterns in London, Singapore and Beijing Using Smart-Card Data." *PLoS One* 11 (2): e0149222.