



Deposited via The University of Sheffield.

White Rose Research Online URL for this paper:

<https://eprints.whiterose.ac.uk/id/eprint/207965/>

Version: Published Version

Article:

Ring, A., Kilburn, L.S., Pearson, A. et al. (2023) Olaparib and ceralasertib (AZD6738) in patients with triple-negative advanced breast cancer: Results from Cohort E of the plasmaMATCH trial (CRUK/15/010). *Clinical Cancer Research*, 29 (23). pp. 4751-4759. ISSN: 1078-0432

<https://doi.org/10.1158/1078-0432.ccr-23-1696>

Reuse

This article is distributed under the terms of the Creative Commons Attribution (CC BY) licence. This licence allows you to distribute, remix, tweak, and build upon the work, even commercially, as long as you credit the authors for the original work. More information and the full terms of the licence here:

<https://creativecommons.org/licenses/>

Takedown

If you consider content in White Rose Research Online to be in breach of UK law, please notify us by emailing eprints@whiterose.ac.uk including the URL of the record and the reason for the withdrawal request.

Olaparib and Ceralasertib (AZD6738) in Patients with Triple-Negative Advanced Breast Cancer: Results from Cohort E of the plasmaMATCH Trial (CRUK/15/010)



Alistair Ring^{1,2}, Lucy S. Kilburn³, Alex Pearson⁴, Laura Moretti³, Angelica Afshari-Mehr⁴, Andrew M. Wardley⁵, Bora Gurel⁶, Iain R. Macpherson⁷, Ruth Riisnaes⁶, Richard D. Baird⁸, Sue Martin³, Rebecca Roylance⁹, Hannah Johnson³, Ana Ferreira⁶, Matthew C. Winter¹⁰, Kathryn Dunne^{4,11}, Ellen Copson¹², Tamas Hickish¹³, Russell Burcombe¹⁴, Kat Randle¹⁵, Violeta Serra¹⁶, Alba Llop-Guevara¹⁶, Judith M. Bliss³, and Nicolas C. Turner^{1,4}

ABSTRACT

Purpose: Approximately 10% to 15% of triple-negative breast cancers (TNBC) have deleterious mutations in *BRCA1* and *BRCA2* and may benefit from PARP inhibitor treatment. PARP inhibitors may also increase exogenous replication stress and thereby increase sensitivity to inhibitors of ataxia telangiectasia and Rad3-related (ATR) protein. This phase II study examined the activity of the combination of PARP inhibitor, olaparib, and ATR inhibitor, ceralasertib (AZD6738), in patients with advanced TNBC.

Patients and Methods: Patients with TNBC on most recent biopsy who had received 1 or 2 lines of chemotherapy for advanced disease or had relapsed within 12 months of (neo)adjuvant chemotherapy were eligible. Treatment was olaparib 300 mg twice a day continuously and ceralasertib 160 mg on days 1–7 on a 28-day cycle until disease progression. The primary endpoint was confirmed

objective response rate (ORR). Tissue and plasma biomarker analyses were preplanned to identify predictors of response.

Results: 70 evaluable patients were enrolled. Germline *BRCA1/2* mutations were present in 10 (14%) patients and 3 (4%) patients had somatic *BRCA* mutations. The confirmed ORR was 12/70; 17.1% (95% confidence interval, 10.4–25.5). Responses were observed in patients without germline or somatic *BRCA1/2* mutations, including patients with mutations in other homologous recombination repair genes and tumors with functional homologous recombination deficiency by RAD51 foci.

Conclusions: The response rate to olaparib and ceralasertib did not meet prespecified criteria for activity in the overall evaluable population, but responses were observed in patients who would not be expected to respond to olaparib monotherapy.

¹Breast Unit, The Royal Marsden Hospital, Sutton, United Kingdom. ²Division of Breast Cancer Research, Institute of Cancer Research, London, United Kingdom. ³Clinical Trials and Statistics Unit at The Institute of Cancer Research, London, United Kingdom. ⁴The Breast Cancer Now Toby Robins Research Centre, The Institute of Cancer Research, London, United Kingdom. ⁵Outreach Research & Innovation Group, Manchester, United Kingdom. ⁶Clinical Studies – Cancer Biomarkers, The Institute of Cancer Research, London, United Kingdom. ⁷School of Cancer Sciences, University of Glasgow, Glasgow, United Kingdom. ⁸Cancer Research UK Cambridge Centre, Cambridge, United Kingdom. ⁹University College London Hospitals NHS Foundation Trust & NIHR University College London Hospitals Biomedical Research Centre, London, United Kingdom. ¹⁰Weston Park Hospital, Sheffield Teaching Hospitals NHS Foundation Trust, Sheffield, United Kingdom. ¹¹Ralph Lauren Centre for Breast Cancer Research, Royal Marsden Hospital, London, United Kingdom. ¹²Cancer Sciences Academic Unit, University of Southampton, Southampton, United Kingdom. ¹³Royal Bournemouth Hospital, University Hospitals Dorset NHS Foundation Trust, Bournemouth, United Kingdom. ¹⁴Maidstone and Tunbridge Wells NHS Trust, Maidstone, Kent, United Kingdom. ¹⁵Independent Cancer Patients' Voice, London, United Kingdom. ¹⁶Experimental Therapeutics Group, Vall d'Hebron Institute of Oncology, Barcelona, Spain.

L.S. Kilburn and A. Pearson contributed equally to this article.

J.M. Bliss and N.C. Turner contributed equally as co-senior authors of this article.

Corresponding Author: Alistair Ring, Department of Medicine, Royal Marsden Hospital NHS Foundation Trust, Downs Road, Surrey, Sutton SM2 5PT, United Kingdom. E-mail: alistair.ring@rmh.nhs.uk

Clin Cancer Res 2023;29:4751–9

doi: 10.1158/1078-0432.CCR-23-1696

This open access article is distributed under the Creative Commons Attribution 4.0 International (CC BY 4.0) license.

©2023 The Authors; Published by the American Association for Cancer Research

Introduction

Approximately 10% to 15% of breast cancers do not express hormone receptors [estrogen receptor (ER) or progesterone receptor (PgR)] and are HER2-negative. This triple-negative breast cancer (TNBC) subgroup has a poor prognosis with overall survival for those patients with metastatic disease of 1 to 2 years (1). The identification of novel therapeutic targets and treatment approaches in patients with this breast cancer subtype is therefore paramount. The PARP enzyme is required for single strand break DNA repair, and cancer cell lines with defective homologous recombination (HR) are unable to tolerate the DNA damage that results from PARP inhibition, resulting in cell-cycle arrest and apoptosis. Both *BRCA1* and *BRCA2* are needed for HR and consequently cancer cell lines deficient in *BRCA1* or *BRCA2* are highly sensitive to PARP inhibitors. Approximately 10% to 15% of TNBCs have deleterious mutations in *BRCA1* and *BRCA2*, and the PARP inhibitors olaparib and talazoparib are licensed for the treatment of advanced HER2-negative breast cancer associated with these mutations. In addition, a proportion of sporadic TNBCs may have defective HR, in part due to reduced *BRCA1* expression or *BRCA1* promoter methylation, that may therefore benefit from PARP inhibitor treatment (2–4).

AZD6738 (ceralasertib) is a potent, selective inhibitor of the serine/threonine-specific protein kinase, ataxia telangiectasia and Rad3-related (ATR) protein. ATR is an apical kinase in one of the DNA-damage induced checkpoint pathways (5). During normal DNA replication ATR is recruited at stalled replication forks, which can progress to double-strand breaks (DSB) if left unrepaired. Recruitment and activation of ATR leads to cell-cycle arrest in the S-phase while the DNA is repaired; either the stalled replication fork is resolved, or there

Translational Relevance

The standard systemic therapy of advanced Triple Negative Breast Cancer is cytotoxic chemotherapy, antibody-drug conjugates and immunotherapy (in those with PDL-1 positive tumor). Despite more recent developments, the median overall survival of such patients is 2 years. PARP inhibitors are indicated in the 10–15% of patients with germline or somatic BRCA mutations. Cohort E of the plasmaMATCH Trial found that when a PARP inhibitor (Olaparib) was combined with an ATR inhibitor (Ceralasertib), responses were seen both in patients with BRCA mutations and in those without. Patients with pathogenic mutations in other homologous recombination repair genes and low RAD51 foci were amongst responders. This means that patients without BRCA mutations, identifiable by other molecular predictors, may be able to benefit from this therapeutic approach.

is nuclear fragmentation and apoptosis. Loss of ATR function leads to the inability to resolve stalled replication forks, resulting in the accumulation of DNA damage and cell death. Increasing the exogenous replication stress in combination with PARP inhibitors such as olaparib could increase the sensitivity of ATR inhibitors. The combination of olaparib with an ATR inhibitor is therefore hypothesised to be active in TNBC (6). Ataxia telangiectasia–mutated (ATM serine/threonine kinase) is a further apical kinase of DNA DSB response, that signals in a partially nonredundant fashion with ATR, and ATR inhibitors have synthetic lethal activity in ATM-deficient cancers (7). Preclinical models have shown that TNBC, BRCA mutant and ATM-deficient cancer may be highly sensitive to the combination of PARP inhibitors and DNA damage response kinase inhibitors such as ATR inhibitors (8–10).

The plasmaMATCH trial was an open label, non-randomized, phase IIa clinical trial platform, consisting of circulating tumor DNA (ctDNA) testing in patients with advanced breast cancer linked to parallel treatment cohorts with therapies matched to mutations identified in ctDNA. The ctDNA screening component of the trial and Cohorts A–D have already been reported (11). With the low incidence of the mutations targeted (*ESR1*, *ERBB2*, *AKT1*, *PTEN*) in TNBC, an additional cohort, Cohort E, was added later to the adaptive trial platform to include patients with TNBC without a targetable mutation identified at ctDNA screening, treating them with olaparib (PARP inhibitor) plus ceralasertib (ATR inhibitor, formerly AZD6738). Here we report the principal results of Cohort E, along with predefined biomarker subgroup analyses.

Patients and Methods

Patients

Cohort E of the plasmaMATCH study was designed to recruit patients with advanced TNBC as determined on their most recent biopsy. TNBC defined as ER-negative, PgR-negative (ER- and PgR-negative defined as either Allred score 0/8 or 2/8 or stain in <1% of cancer cells) or ER-negative, PgR unavailable, and HER2-negative (IHC 0/1+ or negative in situ hybridization) as determined by local laboratory. These patients had undergone ctDNA screening as part of plasmaMATCH trial registration and were not able to enter Cohorts A–D because either no actionable mutations were identified; or an actionable mutation was identified but the cohort was closed; or the patient did not meet the relevant cohort specific eligibility criteria.

Eligible patients had an Eastern Cooperative Oncology Group performance status of 0 or 1 and were suitable for a baseline advanced disease biopsy or had an archival advanced disease biopsy available for translational analyses. Patients had disease progression by radiological assessment and had completed at least one prior line of treatment for advanced breast cancer and/or relapsed within 12 months of (neo) adjuvant chemotherapy. A maximum of two prior lines of chemotherapy, antibody–drug conjugate or immunotherapy for advanced disease were permitted. If patients had received a prior platinum-containing therapy for metastatic disease they were required to have achieved a partial response (PR)/complete response (CR) or stable disease (SD) and not have progressed during or within 8 weeks of receipt of last dose of platinum.

Treatment and procedures

Details on ctDNA testing have been reported previously (11). Treatment for patients eligible for Cohort E was with olaparib 300 mg twice daily administered orally on each day of the treatment cycle and ceralasertib 160 mg once daily administered orally on days 1–7 of each 28-day treatment cycle. Treatment was until disease progression or unacceptable toxicity. Participants could also discontinue from trial treatment at any time at their own request or be discontinued at the discretion of the treating clinician. Dose modifications were permitted for patients experiencing toxicities related to treatment. Patients underwent CT or MRI scan and bone scan at baseline, with CT or MRI scan repeated 8 weekly until 32 weeks and 12 weekly thereafter. Laboratory assessments, adverse event (AE) recording and vital signs were performed at least every 4 weeks. Toxicity was assessed using NCI Common Terminology Criteria for Adverse Events version 4. Coding was done with use of the Medical Dictionary for Regulatory Activities (MedDRA) version 22.

Endpoints

The primary endpoint was confirmed objective response rate (ORR) defined as a confirmed CR or PR at any point during trial treatment according to RECIST criteria, version 1.1. Secondary endpoints included duration of response (defined as time from the first documentation of CR or PR until date of disease progression or last date of follow-up), clinical benefit rate (defined as CR, PR, or SD for more than 6 months during trial treatment), progression-free survival (PFS; defined as time from cohort entry to first date of either confirmed progression of disease according to RECIST criteria or death from any cause), safety and tolerability of therapies.

Statistical considerations

A Simon two-stage design was used with a target initial response rate of 25% and unacceptable response rate of 10%, two-sided $\alpha = 0.02$ and 90% power. Stage 1 required recruitment of 37 evaluable patients and at least 5 responses to be observed to continue recruitment to a total of 69 evaluable patients where at least 13 responses were required to infer sufficient activity of the olaparib–ceralasertib combination.

ORR, duration of response, and clinical benefit rate were measured in an evaluable population defined as those patients with measurable disease per RECIST at baseline and at least one on-treatment assessment; patients who stopped treatment because of intolerable toxicity or death without having a scan after baseline were evaluable and recorded as nonresponders. Proportions and two-sided 95% confidence intervals (CI) for estimation purposes were reported. For the primary endpoint, in addition to the response rate reported as a percentage (responses/number of evaluable patients), the uniformly minimum-variance unbiased estimator

Table 1. Patients and characteristics.

	N = 75	
	n	%
Age, median:	55.6 years	
Metastatic at diagnosis		
Yes	12	16
No	63	84
Phenotype of primary tumor ^a		
HR negative HER2-negative	57	76
HR-positive HER2-negative	13	17.3
HR-positive HER2-positive	2	2.7
HR-negative HER2-positive	1	1.3
Systemic therapy for primary tumor		
Chemotherapy	56	88.9
Endocrine therapy	13	20.6
Anti-HER2 therapy	2	3.2
Platinum based chemotherapy	15	20
Phenotype of recurrence (or primary if recurrence not known)		
HR-negative HER2-negative	75	100
Disease sites		
Visceral	55	73.3
Soft tissue/nodal	20	26.7
Bone only	0	0
Systemic therapy for metastatic disease		
No chemotherapy	20	26.7
1 line chemotherapy	42	56
2 lines chemotherapy	13	17.3
Platinum-based chemotherapy	14	18.6
Immunotherapy	10	13.3
Endocrine therapy ^b	5	6.7
Anti-HER2 therapy ^b	1	6.7
Germline <i>BRCA</i> status		
No mutation	65	86.7
Pathogenic <i>BRCA1</i>	7	9.3
Pathogenic <i>BRCA2</i>	3	4
Somatic <i>BRCA</i> mutation ^c		
No mutation	70	93.3
Pathogenic <i>BRCA1</i>	0	0
Pathogenic <i>BRCA2</i>	3	4
Analyses in evaluable patients with no germline or somatic <i>BRCA</i> mutation	55	73.3
ATM loss		
No ATM loss	29	52.7
ATM loss	14	25.4
Inadequate or missing sample	12	21.8
Cyclin E1		
Cyclin E1 high	17	31
Cyclin E1 low	17	31
Inadequate or missing sample	21	38.1
RAD51		
RAD51 high	39	71
RAD51 low	3	5.4
Inadequate or missing sample	13	23.6
HRR gene status		
Wild-type	48	87.2
Germline mutation	2	3.6
Somatic mutation	4	7.3
Inadequate or missing sample	1	1.3

^aData not available for 2 patients; and where de novo stage IV disease: phenotype at presentation presented.

^bThe biopsy confirming triple-negative status was performed after this therapy.

^c2 patients, no sample for analysis.

Further details regarding study population and geographical location are provided in Supplementary Tables S1-S3.

(UMVUE) and adjusted 95% CI are also reported to account for the two-stage design (12, 13). Subgroup analyses were planned to analyze activity according to *BRCA* status (germline and somatic) and homologous recombination repair (HRR) genes (from ctDNA). Analyses by *BRCA1/2* mutation status; and, in patients with no germline or somatic *BRCA1/2* mutations, by ATM loss (“loss” defined as Hscore ≤ 10), Cyclin E1 (high/low; cutpoint = median) and RAD51 foci formation (high/low; low $\leq 10\%$) were conducted. No formal comparisons between subgroups were made.

PFS used the intention-to-treat population. Kaplan–Meier curves were plotted and median PFS was reported with 95% CI. Patients who were alive and progression-free were censored at date of last follow-up; patients who had non-RECIST confirmed progression (e.g., clinical progression only or radiologically confirmed but lesions not measured according to RECIST) were censored at the date progression was reported. The safety population included all patients who had at least one dose of treatment and treatment-emergent AEs where $>10\%$ patients reported any grade or any patients reporting grade ≥ 3 were presented.

Analyses used a database snapshot taken on June 15, 2021. Where reported, *P* values of less than 0.05 were deemed significant. All analyses were conducted using Stata (version 16) and R (version 4.1.1).

Translational analyses

All patients provided a new or archival tissue biopsy from recurrent disease. Blood samples were taken for germline analysis (baseline only) and for biomarker/ctDNA analysis (baseline and pretreatment cycles). *BRCA1/2* germline mutation analysis was performed by local testing, or central lab developed test if no local result were available. *BRCA1/2* somatic mutation analysis was performed using baseline Guardant360, and HRR gene analysis (*ARID1A*, *ARID2*, *ATRX*, *BAP1*, *CDK12*,

CHEK1, *CHEK2*, *FANCD2*, *NBN*, *RAD51D*, *SMARCA4*, *FANCM*, *PALB2*) with baseline Guardant OMNI (Guardant Health; Redwood City, CA). Only pathogenic/likely pathogenic mutations were reported, filtered as previously reported (14). ATM IHC analysis was with clone Y170, negative with H score ≤ 10 (15). Cyclin E1 IHC analysis was with clone HE12, percentage of positive nuclei scored, split positive-negative by median (16). RAD51 immunofluorescence was with ab133534, assessed in geminin positive cells 10802–1-AP, and low RAD51 ($\leq 10\%$) identified HR-deficient tumors (17).

Study oversight

The study was cosponsored by The Institute of Cancer Research and the Royal Marsden NHS Foundation Trust and approved by a Research Ethics Committee (16/SC/0271). The study was conducted according to the approved protocol and its amendments, supplementary guidance and manuals supplied by the cosponsors and in accordance with The Medicines for Human Use (Clinical Trials) Regulations 2004 as amended, the Research Governance Framework for Health and Social Care and the principles of Good Clinical Practice. All participants gave written informed consent prior to registration for ctDNA testing, and again prior to treatment cohort entry. Safety and efficacy data were reviewed regularly by an Independent Data Monitoring Committee (IDMC). Trial oversight was provided by an independent Trial Steering Committee (TSC). This study is registered with ClinicalTrials.gov, NCT03182634; the European Clinical Trials database, EudraCT2015–003735–36; and the ISRCTN registry, ISRCTN16945804. The funders of the study (Cancer Research UK, AstraZeneca, Guardant Health, and Bio-Rad) had no role in study design, data collection, data analysis, data interpretation, or writing of the report. AstraZeneca reviewed the final version of the report but had no role in the decision to submit the manuscript for publication. The

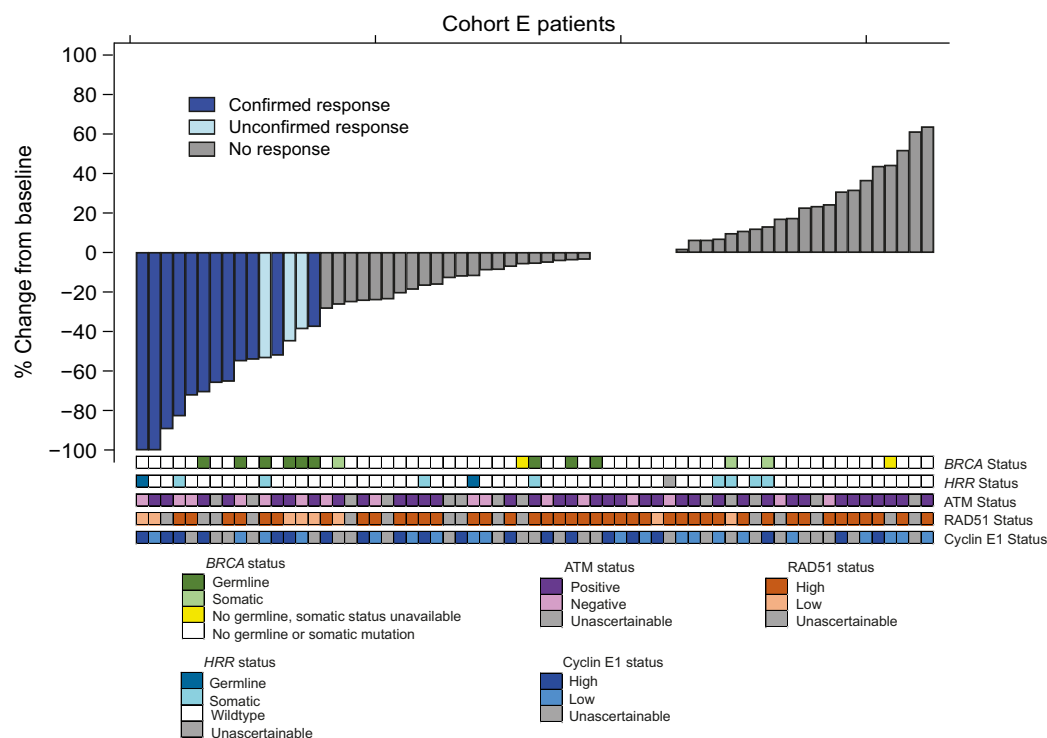


Figure 1. Best percentage change from baseline for sum of the target lesions ($n = 70$).

Downloaded from <http://aacrjournals.org/clincancerres/article-pdf/29/23/4751/3384003/4751.pdf> by guest on 24 January 2024

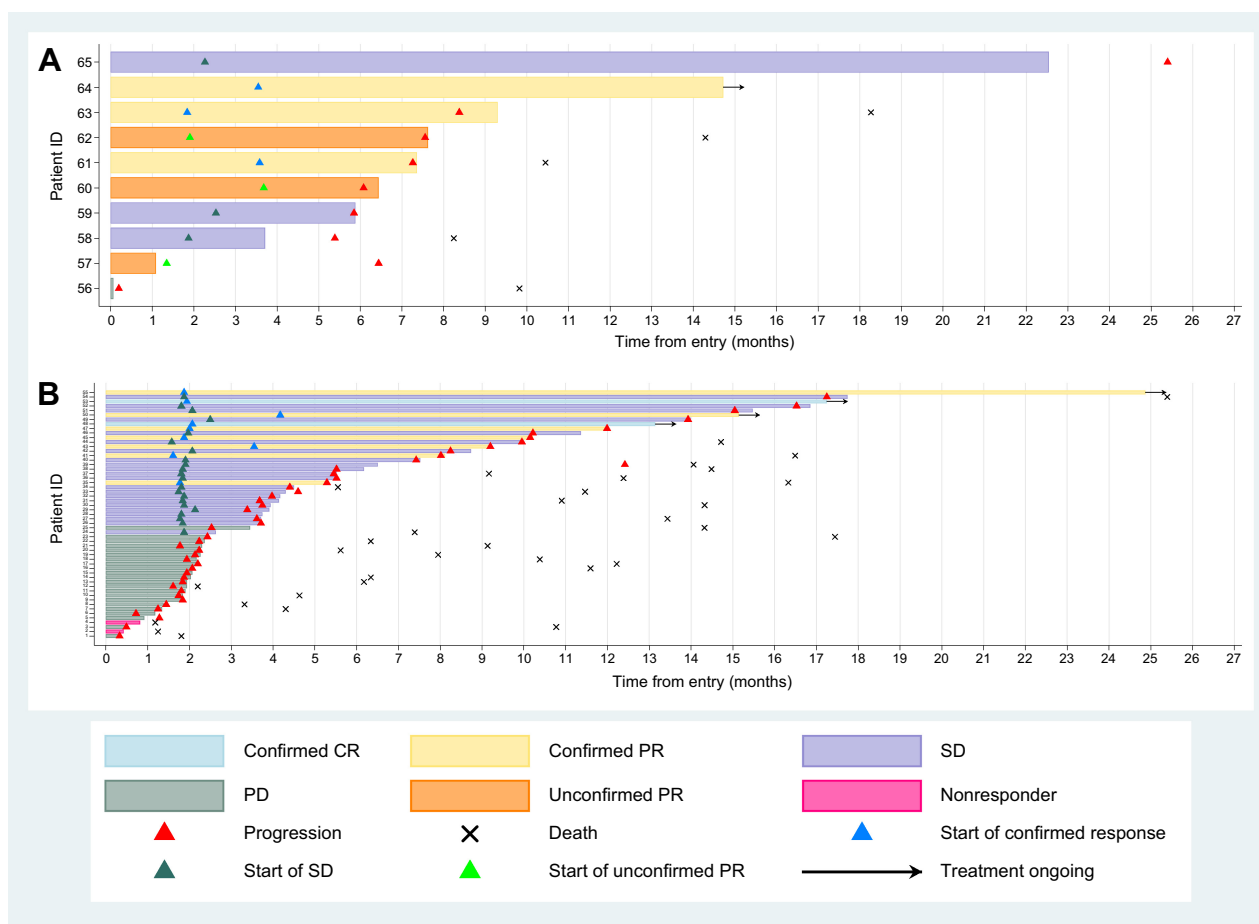


Figure 2.

Swimmer plots for evaluable population with (A) germline *BRCA* mutations ($n = 10$) and (B) no germline or somatic *BRCA* mutations ($n = 55$).

corresponding author had full access to all of the data and the final responsibility to submit for publication.

Data availability statement

De-identified individual participant data, together with a data dictionary defining each field in the set, will be made available to other researchers on request, subject to the approval of a formal data access request in accordance with the ICR-CTSUs data and sample access policy. Trial documentation including the protocol are available on request by contacting plasmamatch-icrtsu@icr.ac.uk.

The ICR-CTSUs supports the wider dissemination of information from the research it conducts, and increased cooperation between investigators. Trial data is collected, managed, stored, shared, and archived according to ICR-CTSUs Standard Operating Procedures to ensure the enduring quality, integrity, and utility of the data. Formal requests for data sharing are considered in line with ICR-CTSUs procedures, with due regard given to funder and sponsor guidelines. Requests are via a standard proforma describing the nature of the proposed research and extent of data requirements.

Data recipients are required to enter a formal data sharing agreement, which describes the conditions for release and requirements for data transfer, storage, archiving, publication, and intellectual property. Requests are reviewed by the Trial Management Group (TMG) in terms of scientific merit and ethical considerations including patient

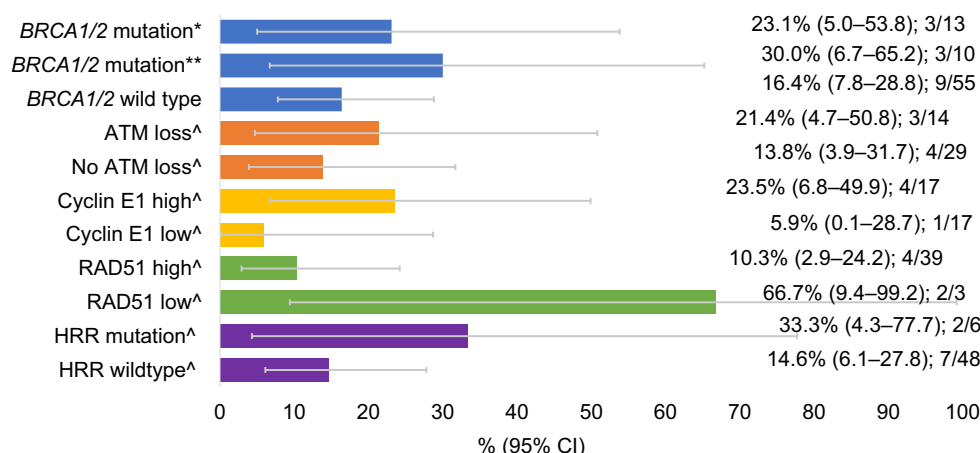
consent. Data sharing is undertaken if proposed projects have a sound scientific or patient benefit rationale, as agreed by the TMG and approved by the TSC, as required.

Restrictions relating to patient confidentiality and consent will be limited by aggregating and anonymizing identifiable patient data. In addition, all indirect identifiers that may lead to deductive disclosures will be removed in line with Cancer Research UK Data Sharing Guidelines. Additional documents may be shared if approved by the TMG and TSC, e.g., statistical analysis plan and informed consent form.

Results

Baseline demographics and clinical characteristics

Between October 4, 2018 and August 27, 2020, 75 patients from 16 UK hospitals were recruited to Cohort E. 60/75 (80%) of patients had no mutation identified in ctDNA testing and 15/75 (20%) patients had ctDNA mutations (9 *PIK3CA*, 2 *PTEN*, 1 *ESR1*, 1 *HER2*, 1 *AKT1*, and 1 *PTEN/PIK3CA*) but there was no available cohort in plasmaMATCH at the time of treatment (Supplementary Fig. S1). The median age was 55.6 years [interquartile range (IQR), 45.7–64.1]; 42 (56%) patients had 1, and 13 (17%) had 2 prior line(s) of chemotherapy for metastatic disease, and 20 (27%) had no prior chemotherapy for advanced cancer having relapsed within 12 months of (neo)adjuvant chemotherapy.



Key: *germline or somatic mutation; **germline only [^]in pts with no germline or somatic BRCA1/2 mutation

Figure 3.

Activity according to biomarker subgroups: confirmed response rate.

BRCA1 and BRCA2 germline mutations were present in 7 (9.3%) and 3 (4%) patients respectively. Three patients had somatic BRCA2 mutations (in the absence of germline BRCA mutations; Table 1). Further details regarding study population and geographical location are provided (Supplementary Tables S1–S3).

Of the 75 patients entering Cohort E, 70 were evaluable for response; 3 patients never started treatment, 1 had no RECIST measurable disease at baseline and 1 patient did not have any post baseline RECIST scan data (Supplementary Fig. S1). The ORR (excluding unconfirmed responses) was 12/70; 17.1% (UMVUE = 18.1%; 95% CI, 10.4%–25.5%). All confirmed responses were in the first 69 evaluable patients. Median duration of response for the 12 patients who had confirmed CR/PR was 9.1 months IQR (6.0–11.5). Five patients with confirmed response were still on treatment at the time of the snapshot (Figs. 1 and 2).

In a *post hoc* analysis 16 of the 70 patients were confirmed as non-TNBC at diagnosis: the response rate in this group was 1/16; 6.3% (95% CI, 0.2–30.2) compared with 10/52; 19.2% (10/52; 95% CI, 9.6–32.5) for TNBC at diagnosis (Fisher exact *P* value = 0.44). There was no evidence of a significant difference in response rate between those patients with and without prior platinum exposure.

The clinical benefit rate was 21/70: 30% (exact 95% CI, 19.6–42.1). At a median follow-up of 18.3 months (IQR, 13.9–23.4), 59/75 (79%) patients had a PFS event with median PFS 4.3 months (IQR, 1.9–10.0 months; Supplementary Fig. S2) and 45 (60%) patients had died. To examine long-responders, an additional snapshot was taken on June 22, 2023, when 3 patients remained on treatment, with 48.6 (BRCA wild-type, no ATM loss, RAD51 high), 40.2 (germline BRCA mutation, ATM loss and RAD51 low) and 37.9 (BRCA wild-type, ATM loss, RAD51 unknown) months follow-up respectively.

Biomarker analyses

In predefined subgroup analyses, confirmed response rate in patients with a BRCA1/2 germline mutation was 3/10: 30% (exact 95% CI, 6.7%–65.2%), in patients with BRCA1/2 germline or somatic mutations was 3/13: 23.1% (exact 95% CI, 5.0%–53.8%), and in patients with no BRCA1/2 mutations (germline or somatic) was 9/55: 16.4% (exact 95% CI, 7.8%–28.8%; Fig. 3).

A subset of tumor tissues from 59 patients, were sequenced with a tissue panel, and no additional somatic BRCA1/2 mutations were identified, supporting the primary somatic BRCA1/2 analysis with Guardant360 on ctDNA.

As expected, low RAD51 was seen more frequently in patients with germline or somatic BRCA mutations (5/11; 45%) compared with those without BRCA mutations (3/42; 7%; Supplementary Table S4). RAD51 identified the two patients who showed a CR despite not harboring a BRCA mutation (Fig. 1): although one of these patients had a germline PALB2 mutation. In patients without BRCA1/2 mutations: ATM loss, high cyclin E1 expression, and functional HRD by RAD51 foci were associated with numerically higher rates of response, and PFS (Fig. 3; Table 2; and Supplementary Fig. S3).

Pathogenic mutations in HRR genes (not including germline and somatic BRCA mutations) were found in 10/74 (13.5%) patients (unascertainable in one patient; No patients had truncating ATM mutations in ctDNA analysis). In the 54 of these patients with evaluable disease and no germline or somatic BRCA mutations, 6 patients were found to have pathogenic mutations in HRR genes. The

Table 2. Activity according to biomarker subgroups: PFS (median, IQR, months).

	N	Median PFS (IQR), months
BRCA1/2 mutation ^a	13	7.3 (4.5–25.4)
BRCA1/2 mutation ^b	10	8.4 (6.1–25.4)
BRCA1/2 wild-type	60	3.7 (1.9–10.0)
ATM loss ^c	14	3.4 (1.4–10.2)
No ATM loss ^c	33	2.5 (1.9–10.0)
Cyclin E1 high ^c	18	5.5 (2.5–10.2)
Cyclin E1 low ^c	18	2.2 (1.8–7.4)
RAD51 high ^c	42	2.5 (1.9–9.2)
RAD51 low ^c	4	Undetermined, median not reached

^aGermline or somatic mutation.

^bGermline only.

^cIn patients with no germline or somatic BRCA1/2 mutation. Further data on activity in patients with BRCA mutations is provided in Supplementary Table S4.

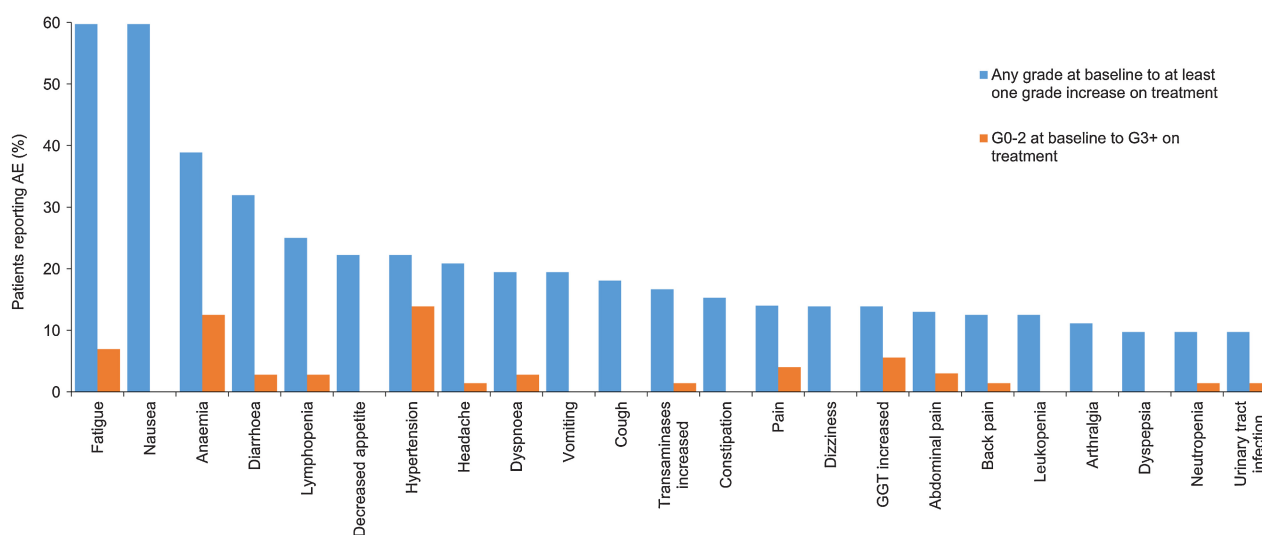


Figure 4.
Treatment-emergent AEs more than 10% incidence.

confirmed response rate in these patients HRR mutant cancer was 33% (2/6). A patient with a germline *PALB2* mutation had a CR, and a patient with somatic *NBN*R466fs mutation (also known as *NBS1*) a PR. In patients who were *BRCA* and *HRR* wild-type the response rate was 14.6% (7/48).

Safety

Seventy-two patients were evaluable for the safety analysis (Fig. 4; Supplementary Table S5). Sixty-nine patients reported ≥ 1 treatment-emergent AEs at any grade. Thirty-two patients reported ≥ 1 treatment-emergent grade 3 or above AEs. The most common clinically significant treatment-emergent grade 3 AEs were hypertension (14%) and anemia (13%; Fig. 4).

Nineteen patients had a dose reduction in olaparib, and 14 patients had a dose reduction in ceralasertib. Six patients permanently discontinued treatment due to adverse effects; owing to diarrhoea, anemia requiring transfusion, chest pain, COVID-19, and fatigue (2 patients).

Discussion

We report Cohort E of the plasmaMATCH study, a single group phase II study in patients with TNBC. The response rate to olaparib and ceralasertib did not meet prespecified criteria for efficacy in the overall evaluable population. However, additional biomarker work identified a number of potential predictive biomarkers, which could be investigated in future clinical trials.

Patients with germline and also somatic *BRCA1/2* mutations are known to respond to PARP inhibitors, such as olaparib, therefore the principal focus of the biomarker analysis was in patients with wild-type *BRCA1/2*. Patients had RAD51 foci assessed on the most recent biopsy, and although numbers are small, those patients without *BRCA1/2* mutations but with functional HRD by RAD51 foci responded to therapy (Fig. 3; One of these patients had a germline *PALB2* mutation). Tumors with high cyclin E1 protein may have evidence of replication stress, that could be exploited by olaparib plus ceralasertib therapy, and tumors with high cyclin E1 protein were more likely to benefit from therapy (Fig. 3). Although numerically higher response rates were seen in cancers with low ATM protein, the benefit seen in

these patients were possibly lower than that observed with other ATR inhibitors or in preclinical models given in a more continuous schedule (18). Finally, in an exploratory analysis that was not pre-stated in the trial protocol, patients with other mutations in other HRR genes were potentially likely to benefit, with a CR in a patient with a germline *PALB2* mutation, further re-enforcing the role of PARP inhibition in patients with germline *PALB2* mutations (19).

Our study has a number of limitations. As a non-comparative phase II study we are unable to assess whether activity observed is a result of the combination therapy, or one of the individual drugs in the combination. In the recently presented VIOLETTE study (NCT03330847) patients with metastatic TNBC were randomized to receive olaparib, olaparib, and ceralasertib or olaparib and adavosertib (20). Patients were stratified on the basis of an HRR assay. In patients with no mutations (including no *BRCA* mutations) in the 15 HRR genes tested, the ORR to olaparib was 3.9% (2/51) and to olaparib and ceralasertib 15.4% (8/52), further indicating that responses to the combination are observed outside of the populations where existing biomarkers would predict activity. In the absence of a ceralasertib alone arm, the activity of ATR monotherapy is unknown.

Entry into Cohort E of plasmaMATCH was for patients who did not have actionable mutations in their ctDNA, or if no cohort was available, and this may have led to bias in patient recruitment. However, the cohort commenced late in the trial, the majority of patients were enrolled once other cohorts had stopped recruitment, and the patient population enrolled in Cohort E was likely overall reflective of unselected metastatic TNBC. Prior research has suggested that ATR inhibitors may have substantial efficacy in ATM-deficient cancers, yet in Cohort E we do not see strong evidence for activity in cancers with absent/low ATM expression. This may be reflective of selection on the basis of protein ATM expression, instead of selecting on the basis of ATM inactivating mutations, and/or may reflect the schedule of ATR inhibitor employed, with potentially more continuous schedules being more optimal for ATM-deficient cancers.

In conclusion, we report here the result of a large phase II study in advanced TNBC with olaparib plus ceralasertib therapy. The study did not observe sufficient evidence of efficacy by the predefined criteria,

and this is broadly in line with the data observed in the randomized phase II VIOLETTE study (20). Nevertheless, we identify a number of biomarkers of potential benefit, in particular functional HRD by RAD51 foci, high cyclin E1 expression and pathogenic mutations in HRR genes. Further research is warranted to investigate the potential benefit of olaparib, or olaparib plus ceralasertib therapy, in these biomarker defined subset of patients with advanced TNBC.

Authors' Disclosures

A. Ring reports grants from AstraZeneca, Guardant Health, and Bio-Rad during the conduct of the study; personal fees from AstraZeneca, Daiichi Sankyo, Lilly, Novartis, Pfizer, Roche, Gilead, Stemline, Seagen, and MSD outside the submitted work. L.S. Kilburn reports grants from Cancer Research UK during the conduct of the study. L. Moretti reports grants from Cancer Research UK; grants and nonfinancial support from AstraZeneca; and nonfinancial support from Guardant Health and Bio-Rad during the conduct of the study. I.R. Macpherson reports personal fees from Eli Lilly, AstraZeneca, Daiichi Sankyo, Pfizer, MSD, In3Bio, Roche, Stemline Therapeutics, and Owkin; personal fees and nonfinancial support from Gilead and Novartis outside the submitted work. R.D. Baird reports grants and personal fees from AstraZeneca and Roche-Genentech; personal fees from Daiichi Sankyo, Molecular Partners, Novartis, and Shionigi outside the submitted work. R. Roylance reports other support from NIHR during the conduct of the study; other support from BMS and Roche; personal fees from Pfizer, AstraZeneca, Elli-Lilly, and Daiichi Sankyo outside the submitted work. H. Johnson reports grants from Cancer Research UK; grants and nonfinancial support from AstraZeneca; nonfinancial support from Guardant Health and Bio-Rad during the conduct of the study. M.C. Winter reports personal fees from Novartis, Gilead, Roche, Eli Lilly, and Pfizer outside the submitted work. E. Copson reports nonfinancial support from SECA; personal fees and nonfinancial support from Roche and Novartis; grants and personal fees from AstraZeneca, Daiichi Sankyo, and World Cancer Research Fund; and personal fees from Eli-Lilly, Pfizer, and Menarini-Stemline outside the submitted work. T. Hickish reports grants from Cancer Research UK during the conduct of the study; personal fees from iQ HealthTech outside the submitted work. V. Serra reports grants from ISCIII and AECC during the conduct of the study; grants from AstraZeneca outside the submitted work; in addition, V. Serra has a patent for WO2019122411A1 pending. A. Llop-Guevara reports grants from Asociación Española Contra el Cáncer (AECC, INVE20095LLOP) during the conduct of the study; in addition, A. Llop-Guevara has a patent for WO2019122411A1 pending. J.M. Bliss reports grants from Cancer Research UK; grants and nonfinancial support from AstraZeneca, Puma Biotechnology, AstraZeneca, Novartis, Janssen-Cilag, Merck Sharpe & Dohme, Puma Biotechnology, Pfizer, Roche, and Clovis Oncology; and nonfinancial support from Guardant Health and Bio-Rad during the conduct of the study; and grants and nonfinancial support from Eli Lilly outside the submitted work. N.C. Turner reports advisory board honoraria from AstraZeneca, Lilly, Pfizer, Roche/Genentech, Novartis, GlaxoSmithKline, Repare therapeutics, Relay therapeutics, Zentalis, Gilead, Inivata, Guardant, and Exact Sciences, and research funding from AstraZeneca, Pfizer, Roche/Genentech, Merck Sharpe and Dohme, Guardant Health, Inivata, Inivata, Personalis, and Natera. No disclosures were reported by the other authors.

Authors' Contributions

A. Ring: Conceptualization, investigation, writing—original draft, writing—review and editing. L.S. Kilburn: Conceptualization, formal analysis, investigation, methodology, writing—original draft, writing—review and editing. A. Pearson: Formal analysis, investigation, writing—review and editing. L. Moretti: Methodology, project administration, writing—review and editing. A. Afshari-Mehr: Formal analysis, writing—review and editing. A.M. Wardley: Conceptualization, investigation,

writing—review and editing. B. Gurel: Investigation, writing—review and editing. I.R. Macpherson: Conceptualization, investigation, writing—review and editing. R. Riisnaes: Investigation, writing—review and editing. R.D. Baird: Conceptualization, investigation, writing—review and editing. S. Martin: Methodology, project administration, writing—review and editing. R. Roylance: Conceptualization, investigation, writing—review and editing. H. Johnson: Methodology, project administration, writing—review and editing. A. Ferreira: Investigation, writing—review and editing. M.C. Winter: Investigation, writing—review and editing. K. Dunne: Investigation, writing—review and editing. E. Copson: Investigation, writing—review and editing. T. Hickish: Investigation, writing—review and editing. R. Burcombe: Investigation, writing—review and editing. K. Randle: Conceptualization, methodology, writing—review and editing. V. Serra: writing—review and editing. A. Llop-Guevara: Investigation, writing—review and editing. J.M. Bliss: Conceptualization, supervision, funding acquisition, methodology, writing—review and editing. N.C. Turner: Conceptualization, supervision, funding acquisition, investigation, methodology, writing—review and editing.

Acknowledgments

Grateful thanks to all trial participants and their families. This work uses data provided by patients and collected by the NHS as part of their care and support. Thanks also to staff at participating centers, the ICR-CTSU trial team, the staff at central laboratories, including Breast Cancer Now, and the Experimental Therapeutics Group, Vall d'Hebron Institute of Oncology. plasmaMATCH is cosponsored by The Institute of Cancer Research and the Royal Marsden National Health Service Foundation Trust. This research was funded by the Stand Up to Cancer Campaign for Cancer Research UK (CRUK/15/010, C30746/A19505; to S. Martin, H. Johnson, L. Moretti) with additional support from AstraZeneca, Guardant Health, Bio-Rad and Asociación Española Contra el Cáncer (AECC, INVE20095LLOP; to A. Llop-Guevara). The ICR Clinical Trials and Statistics Unit is supported by the Cancer Research UK core programme grant (C1491/A25351; to L.S. Kilburn). This study represents independent research supported by the National Institute for Health Research (NIHR) Biomedical Research Centre at the Royal Marsden National Health Service Foundation Trust and the Institute of Cancer Research, London, UK. In addition, plasmaMATCH is supported by the NIHR Manchester Clinical Research Facility at the Christie Hospital, Manchester, UK, the NIHR UCLH Clinical Research Facility at University College London Hospitals NHS Foundation Trust, London, UK, the Cancer Research UK Cambridge Centre, Cambridge Biomedical Research Centre (BRC-1215-20014) and Cambridge Experimental Cancer Medicine Centre, Cambridge, UK. The RAD51 analysis was supported with grants from the Spanish Association of Cancer Research and Instituto de Salud Carlos III (ERAPERMED2019-215, CPII19/00033, and INVE20095LLOP). plasmaMATCH is supported at participating sites in England by the NIHR Clinical Research Network, in Scotland by the Chief Scientist Office, and in Wales by Health and Care Research Wales. The views expressed are those of the author(s) and not necessarily those of the NIHR or the Department of Health and Social Care. The authors also acknowledge past and present colleagues on the plasmaMATCH TMG, the IDMC, and the TSC, who provided oversight of the trial.

The publication costs of this article were defrayed in part by the payment of publication fees. Therefore, and solely to indicate this fact, this article is hereby marked "advertisement" in accordance with 18 USC section 1734.

Note

Supplementary data for this article are available at Clinical Cancer Research Online (<http://clincancerres.aacrjournals.org/>).

Received June 8, 2023; revised August 16, 2023; accepted September 26, 2023; published first September 29, 2023.

References

- Schmid P, Adams S, Rugo HS, Schneeweiss A, Barrios CH, Iwata H, et al. Atezolizumab and nab-paclitaxel in advanced triple-negative breast cancer. *N Engl J Med* 2018;379:2108-21.
- Chopra N, Tovey H, Pearson A, Cutts R, Toms C, Proszek P, et al. Homologous recombination DNA repair deficiency and PARP inhibition activity in primary triple-negative breast cancer. *Nat Commun* 2020;11:2662.
- Graeser M, McCarthy A, Lord CJ, Savage K, Hills M, Salter J, et al. A marker of homologous recombination predicts pathologic complete response to neoadjuvant chemotherapy in primary breast cancer. *Clin Cancer Res* 2010;16:6159-68.
- Staab J, Glodzik D, Bosch A, Vallon-Christersson J, Reuterswärd C, Häkkinen J, et al. Whole-genome sequencing of triple-negative breast cancers in a population-based clinical study. *Nat Med* 2019;25:1526-33.

5. Lecona E, Fernandez-Capetillo O. Targeting ATR in cancer. *Nat Rev Cancer* 2018;18:586–95.
6. Yap T, Krebs MG, Postel-Vinay S, Bang Y, El-Khoueiry A, Abida W, et al. Phase I modular study of AZD6738, a novel oral, potent and selective ataxia telangiectasia Rad3-related (ATR) inhibitor in combination (combo) with carboplatin, olaparib, or durvalumab in patients (pts) with advanced cancers. *Eur J Cancer* 2016;69:S2.
7. Yap TA, Tan DSP, Terbuch A, Caldwell R, Guo C, Goh BC, et al. First-in-human trial of the oral ataxia telangiectasia and RAD3-related (ATR) inhibitor BAY 1895344 in patients with advanced solid tumors. *Cancer Discov* 2021;11:80–91.
8. Lloyd RL, Wijnhoven PWG, Ramos-Montoya A, Wilson Z, Illuzzi G, Falenta K, et al. Combined PARP and ATR inhibition potentiates genome instability and cell death in ATM-deficient cancer cells. *Oncogene* 2020;39:4869–83.
9. Peasland A, Wang L-Z, Rowling E, Kyle S, Chen T, Hopkins A, et al. Identification and evaluation of a potent novel ATR inhibitor, NU6027, in breast and ovarian cancer cell lines. *Br J Cancer* 2011;105:372–81.
10. Wilson Z, Odedra R, Wallez Y, Wijnhoven PWG, Hughes AM, Gerrard J, et al. ATR inhibitor AZD6738 (ceralasertib) exerts antitumor activity as a monotherapy and in combination with chemotherapy and the PARP inhibitor olaparib. *Cancer Res* 2022;82:1140–52.
11. Turner NC, Kingston B, Kilburn LS, Kernaghan S, Wardley AM, Macpherson IR, et al. Circulating tumor DNA analysis to direct therapy in advanced breast cancer (plasmaMATCH): a multicenter, multicohort, phase IIa, platform trial. *Lancet Oncol* 2020;21:1296–308.
12. Jung SH, Kim KM. On the estimation of the binomial probability in multistage clinical trials. *Stat Med* 2004;23:881–96.
13. Koyama T, Chen H. Proper inference from Simon's two-stage designs. *Stat Med* 2008;27:3145–54.
14. Kingston B, Cutts RJ, Bye H, Beaney M, Walsh-Crestani G, Hrebien S, et al. Genomic profile of advanced breast cancer in circulating tumor DNA. *Nat Commun* 2021;12:2423.
15. Neeb A, Herranz N, Arce-Gallego S, Miranda S, Buroni L, Yuan W, et al. Advanced prostate cancer with ATM loss: PARP and ATR inhibitors. *Eur Urol* 2021;79:200–11.
16. Pascual J, Lim JSJ, Macpherson IR, Armstrong AC, Ring A, Okines AFC, et al. Triplet therapy with palbociclib, taselisib, and fulvestrant in PIK3CA-mutant breast cancer and doublet palbociclib and taselisib in pathway-mutant solid cancers. *Cancer Discov* 2021;11:92–107.
17. Castroviejo-Bermejo M, Cruz C, Llop-Guevara A, Gutiérrez-Enríquez S, Ducy M, Ibrahim YH, et al. A RAD51 assay feasible in routine tumor samples calls PARP inhibitor response beyond BRCA mutation. *EMBO Mol Med* 2018;10:e9172.
18. Serra V, Wang AT, Castroviejo-Bermejo M, Polanska UM, Palafox M, Herencia-Ropero A, et al. Identification of a molecularly-defined subset of breast and ovarian cancer models that respond to WEE1 or ATR inhibition, overcoming PARP inhibitor resistance. *Clin Cancer Res* 2022;28:4536–50.
19. Tung NM, Robson ME, Ventz S, Santa-Maria CA, Nanda R, Marcom PK, et al. TBCRC048: phase II study of olaparib for metastatic breast cancer and mutations in homologous recombination-related genes. *J Clin Oncol* 2020;38:4274–82.
20. Tutt A, Nowecki Z, Szoszkiewicz R, Im SA, Arkenau HT, Armstrong A, et al. VIOLETTE: a randomized phase II study of olaparib and ceralasertib or adavosertib vs olaparib alone in patients with metastatic triple-negative breast cancer. *ESMO Breast* 2022. 2022.