



Deposited via The University of Sheffield.

White Rose Research Online URL for this paper:

<https://eprints.whiterose.ac.uk/id/eprint/201083/>

Version: Published Version

---

**Article:**

Li, H.K., Zhi, X., Vieira, A. et al. (2023) Characterization of emergent toxigenic M1UK *Streptococcus pyogenes* and associated sublineages. *Microbial Genomics*, 9 (4). 000994. ISSN: 2057-5858

<https://doi.org/10.1099/mgen.0.000994>

---

**Reuse**

This article is distributed under the terms of the Creative Commons Attribution (CC BY) licence. This licence allows you to distribute, remix, tweak, and build upon the work, even commercially, as long as you credit the authors for the original work. More information and the full terms of the licence here:

<https://creativecommons.org/licenses/>

**Takedown**

If you consider content in White Rose Research Online to be in breach of UK law, please notify us by emailing [eprints@whiterose.ac.uk](mailto:eprints@whiterose.ac.uk) including the URL of the record and the reason for the withdrawal request.

# Characterization of emergent toxigenic M1<sub>UK</sub> *Streptococcus pyogenes* and associated sublineages

Ho Kwong Li<sup>1,2†</sup>, Xiangyun Zhi<sup>1,2†</sup>, Ana Vieira<sup>1,2</sup>, Harry J. Whitwell<sup>3,4</sup>, Amelia Schrickler<sup>5</sup>, Elita Jauneikaite<sup>6,7</sup>, Hanqi Li<sup>1</sup>, Ahmed Yosef<sup>1</sup>, Ivan Andrew<sup>8</sup>, Laurence Game<sup>8</sup>, Claire E. Turner<sup>9</sup>, Theresa Lamagni<sup>6,10</sup>, Juliana Coelho<sup>6,10</sup> and Shiranee Sriskandan<sup>1,2,6,\*</sup>

## Abstract

*Streptococcus pyogenes* genotype *emm1* is a successful, globally distributed epidemic clone that is regarded as inherently virulent. An *emm1* sublineage, M1<sub>UK</sub>, that produces increased levels of SpeA toxin was associated with increased scarlet fever and invasive infections in England in 2015/2016. Defined by 27 SNPs in the core genome, M1<sub>UK</sub> is now dominant in England. To more fully characterize M1<sub>UK</sub>, we undertook comparative transcriptomic and proteomic analyses of M1<sub>UK</sub> and contemporary non-M1<sub>UK</sub> *emm1* strains (M1<sub>global</sub>). Just seven genes were differentially expressed by M1<sub>UK</sub> compared with contemporary M1<sub>global</sub> strains. In addition to *speA*, five genes in the operon that includes glycerol dehydrogenase were upregulated in M1<sub>UK</sub> (*gldA*, *mipB/talC*, *pflD*, and phosphotransferase system IIC and IIB components), while aquaporin (*glpF2*) was downregulated. M1<sub>UK</sub> strains have a stop codon in *gldA*. Deletion of *gldA* in M1<sub>global</sub> abrogated glycerol dehydrogenase activity, and recapitulated upregulation of gene expression within the operon that includes *gldA*, consistent with a feedback effect. Phylogenetic analysis identified two intermediate *emm1* sublineages in England comprising 13/27 (M1<sub>13SNPs</sub>) and 23/27 SNPs (M1<sub>23SNPs</sub>), respectively, that had failed to expand in the population. Proteomic analysis of invasive strains from the four phylogenetic *emm1* groups highlighted sublineage-specific changes in carbohydrate metabolism, protein synthesis and protein processing; upregulation of SpeA was not observed in chemically defined medium. In rich broth, however, expression of SpeA was upregulated ~10-fold in both M1<sub>23SNPs</sub> and M1<sub>UK</sub> sublineages, compared with M1<sub>13SNPs</sub> and M1<sub>global</sub>. We conclude that stepwise accumulation of SNPs led to the emergence of M1<sub>UK</sub>. While increased expression of SpeA is a key indicator of M1<sub>UK</sub> and undoubtedly important, M1<sub>UK</sub> strains have outcompeted M1<sub>23SNPs</sub> and other *emm* types that produce similar or more superantigen toxin. We speculate that an accumulation of adaptive SNPs has contributed to a wider fitness advantage in M1<sub>UK</sub> on an inherently successful *emm1* streptococcal background.

## DATA SUMMARY

RNA-seq: all new RNA-seq data are uploaded to the European Nucleotide Archive under project reference PRJEB58303. Genomic data: all genomes listed are available on the European Nucleotide Archive using accession numbers as listed in the appendix. Proteomic data are available as a Microbiology Society FigShare item [1]: <https://doi.org/10.6084/m9.figshare.22138172.v1>

Received 06 January 2023; Accepted 23 February 2023; Published 24 April 2023

**Author affiliations:** <sup>1</sup>Department of Infectious Disease, Imperial College London, London, UK; <sup>2</sup>MRC Centre for Molecular Bacteriology & Infection (CMBI), Imperial College London, London, UK; <sup>3</sup>National Phenome Centre and Imperial Clinical Phenotyping Centre, Department of Metabolism, Digestion and Reproduction, Imperial College London, London, UK; <sup>4</sup>Department of Metabolism, Digestion and Reproduction, Imperial College London, London, UK; <sup>5</sup>UK Dementia Research Institute, Department of Brain Sciences, Imperial College London, London, UK; <sup>6</sup>NIHR Health Protection Unit in Healthcare-associated Infection and Antimicrobial Resistance, Imperial College London, London, UK; <sup>7</sup>School of Public Health, Imperial College London, London, UK; <sup>8</sup>Genomics Facility, UKRI-MRC London Institute for Medical Sciences (LMS), Imperial College London, London, UK; <sup>9</sup>The Florey Institute, School of Biosciences, University of Sheffield, South Yorkshire, UK; <sup>10</sup>Centre for Infections, UK Health Security Agency, London, UK.

\*Correspondence: Shiranee Sriskandan, s.sriskandan@imperial.ac.uk

**Keywords:** *Streptococcus pyogenes*; superantigen; scarlet fever; genomics; proteome.

**Abbreviations:** CBA, Columbia blood agar; CDM, chemically defined medium; DE, differentially expressed; DHA, dihydroxyacetone; HDMSe, High definition mass spectrometry; PTS, phosphotransferase system; qRT-PCR, quantitative reverse transcription PCR; RNA-seq, RNA sequencing; TFA, trifluoroacetic acid; THB, Todd-Hewitt broth.

†These authors contributed equally to this work

**Data statement:** All supporting data, code and protocols have been provided within the article or through supplementary data files. Five supplementary figures and four supplementary tables are available with the online version of this article.

000994 © 2023 The Authors



This is an open-access article distributed under the terms of the Creative Commons Attribution License. This article was made open access via a Publish and Read agreement between the Microbiology Society and the corresponding author's institution.

## Impact Statement

Although the major *Streptococcus pyogenes* reservoir is in children with pharyngitis and skin infections, *S. pyogenes* can lead to rarer, invasive infections that are rapidly progressive and associated with high mortality and morbidity. *Emm1 S. pyogenes* strains are the single most frequent genotype causing invasive infections in high-income countries and are established worldwide as an epidemic clone. The M1<sub>UK</sub> *S. pyogenes emm1* sublineage, which is defined by 27 new SNPs in the core genome, and characterized by increased scarlet fever toxin SpeA production, emerged and rose to dominance over a period of 5–6 years since initial recognition, outcompeting other *emm1* strains in England. Increased dominance of *emm1* among invasive infections in the winter of 2022/23, on a background of already-increased numbers of *S. pyogenes* infections, points to a key shift in host–pathogen interaction. We hypothesize that a combination of pathogen fitness, virulence and host susceptibility have coalesced to account for the excess of circulating *S. pyogenes* and *emm1* invasive infections. In this paper we undertake a systems-based evaluation of M1<sub>UK</sub> in comparison to older non-M1<sub>UK</sub> *emm1* strains, and identify a number of pathways that are altered in addition to the previously reported increased SpeA expression. The emergence of a new sublineage within an already virulent clone requires ongoing surveillance, and more detailed investigation of the likely mechanisms leading to increased fitness. The capacity of *S. pyogenes* to cause outbreaks at a national scale highlights a potential need to consider strain-specific public health guidance, underlining the inherent virulence of this exclusively human pathogen.

## INTRODUCTION

The modern-day *Streptococcus pyogenes emm1* genotype emerged in the 1980s and spread globally to become the leading cause of invasive *S. pyogenes* infection throughout the developed world [2, 3]. The lineage expanded following a recombination event that conferred increased expression of the NADase/streptolysin O (*nga/slo*) toxin gene locus, and was associated with specific prophage content, including a prophage encoding the superantigen, streptococcal pyrogenic exotoxin A (SpeA) [2]. More recently, during a period of increased scarlet fever activity in England, a new sublineage of *emm1 S. pyogenes* (M1<sub>UK</sub>) was detected and found to have expanded [4]. These M1<sub>UK</sub> strains were strongly associated with not only sore throats and scarlet fever, but also increases in cases of invasive infection [4]. The earliest M1<sub>UK</sub> strain detected to date was in a collection of non-invasive infection isolates from London in 2010, while the first invasive strains were detected in England in 2012. By 2016, the M1<sub>UK</sub> sublineage represented around 80% of all invasive *emm1* isolates in England [4]; this rose to 91% by the end of 2020 [5]. Despite differing from older *emm1* strains by just 27 core genome SNPs, the new sublineage was characterized by a ten-fold increase in transcription and 9.5-fold increase in median production of the superantigen SpeA. Since 2019, the M1<sub>UK</sub> lineage has been identified elsewhere in Europe and North America [6–8].

*Emm1* strains are the single most dominant cause of invasive *S. pyogenes* infection in developed countries. In this work, we set out to characterize the wider phenotype of the new sublineage M1<sub>UK</sub>, and to compare M1<sub>UK</sub> strains with minor sublineages that appeared briefly as intermediates, although did not expand to the extent of M1<sub>UK</sub>. We also examined natural mutants of M1<sub>UK</sub> and the minor sublineages that provide insight into the cost–benefit balance of the changes in this new highly successful group of *S. pyogenes* M1T1 strains.

## METHODS

### Bacterial strains

*S. pyogenes* strains used are outlined in Tables S1 and S2, available in the online version of this article; strains stored in 20% glycerol were streaked onto Columbia blood agar (CBA) prior to broth culture. *S. pyogenes* were cultured in Todd Hewitt Broth (THB; Oxoid) or chemically defined medium (CDM) comprising iron, phosphate, magnesium, manganese, sodium acetate, calcium, sodium bicarbonate, L-cysteine, bases, vitamins and amino acids, with different carbon sources (Table S3) at 37 °C in 5% CO<sub>2</sub>.

### RNA sequencing

RNA was extracted from four different *S. pyogenes* strains from each lineage (Table S1), cultured in THB for 6 h corresponding to late-log growth phase using methods as previously described [4]. RNA sequencing (RNA-seq) of M1<sub>global</sub> and M1<sub>UK</sub> RNA was undertaken by Novogene and by the MRC London Institute of Medical Sciences (LMS). Data (deposited in project PRJEB58303) were analysed according to published guidelines [9]. Briefly, read quality was accessed using FastQC (<https://www.bioinformatics.babraham.ac.uk/projects/fastqc/>), filtered and trimmed using trimmomatic [10], and mapped against the MGAS5005 (CP000017) reference genome using bowtie2 [11] with the highest sensitivity options. The resulting alignments were converted to sorted BAM files using vcfTools [12]. Initial visualizations of the sequencing mapping were performed using the Integrative Genomics Viewer (IGV) [13] including confirmation of *gldA* disruption. The mapped RNA-seq reads were then transformed into a fragment count per gene per sample using the HT-seq [14] package. Exploratory data analysis (principal component analysis and heatmap

of sample-to-sample distances) of the RNA-seq data was implemented and plotted using the DESeq2 package [15]. Differential expression analysis in each dataset was performed using three different R packages (DESeq2 [15], EdgeR [16] and limma (<https://bioconductor.riken.jp/packages/3.0/bioc/html/limma.html>)) with a  $\log_2$  fold change of 0.5 and  $P$ -adj <0.05 for M1<sub>global</sub> vs. M1<sub>UK</sub>, and a  $\log_2$  fold change of 1 and  $P$ -adj <0.05 for M1<sub>H1488ΔgldA</sub> vs. M1<sub>H1488</sub>. Only genes differentially expressed (DE) in at least two of the three softwares used were considered as DE genes and used in analysis. Prophage regions were predicted using phaster [17], and curated by visual assessment and blast alignment.

## Gene transcription studies

Specific transcript abundance was evaluated by real time quantitative reverse transcription PCR (qRT-PCR) using a plasmid standard for each gene and compared with the housekeeping gene *proS*. For the *gldA* operon plasmid standard, single amplicons were amplified to create a single linear insert (*proS-gldA-mipB-pflD*-PTS subunit IIC) that was TA-cloned into plasmid pCR2.1. For *glpF2* and *speA*, the plasmid standard comprised just *glpF2* and *proS*, or *speA* and *proS* respectively. cDNA synthesis from *S. pyogenes* RNA was undertaken as previously reported prior to RT-PCR [4]; primers are listed in Table S4. Comparisons were subject to analysis in GraphPad Prism v9. Non-parametric (Mann Whitney *U*) or *t*-tests were used;  $P$ <0.05 was considered significant.

## Genetic manipulation

The gene encoding *gldA* was mutated by allelic replacement using the suicide vector pUCMUT. A 541 bp fragment upstream of the *gldA* gene was amplified (forward primer: 5'-AGCGAATTCTCGCCCAAGATTACGAAGG-3', reverse primer: 5'-GGGGTACCCGTTGAACTCCTTTATCTGTGATT-3') incorporating 5' *EcoRI* and 3' *KpnI* restriction sites (shown in italics), and cloned into the suicide vector pUCMUT to produce vector pUCMUT<sub>gldAUP</sub>. A 532 bp fragment downstream of the *gldA* gene was amplified (forward primer: 5'-AACTGCAGCTATTGACAGAGCTGGTGCT-3', reverse primer: 5'-ACGCGTCGACCGAGTCGATAGGCTAACC-3') incorporating 5' *PstI* and 3' *SalI* restriction sites (shown in italics) and cloned into *PstI/SalI* digested pUCMUT<sub>gldAUP</sub> to create pUCMUT<sub>gldAKO</sub>. The construct was introduced into *S. pyogenes* M1<sub>global</sub> strains H1488 (M1<sub>H1488</sub>) and BHS162 (M1<sub>BHS162</sub>) by electroporation and crossed into the chromosome by homologous recombination. Transformants were selected using kanamycin (400 μg ml<sup>-1</sup>). Successful disruption of the *gldA* gene and insertion of the kanamycin resistance cassette was confirmed by PCR, DNA sequencing and whole genome sequencing of mutated strains M1<sub>H1488ΔgldA</sub> and M1<sub>BHS162ΔgldA</sub> (isolate identifiers H1589 and H2151 respectively).

## GldA activity assay

Cell-free extracts were prepared from bacteria cultured overnight in chemically defined medium containing either 0.5% glucose or 0.5% glycerol to an  $A_{600}$  of 0.6–0.7 (or as close to this as feasible). Bacteria were washed, centrifuged and kept on ice for 1 h within an anaerobic jar, then suspended in 10 mM Tris buffer, pH 9. Cells were disrupted by agitation in three 60 s bursts with 0.1 mm glass beads. Beads were allowed to settle, and the supernatant fluid was centrifuged for 30 s at 14000 g. GldA results in conversion of glycerol+NAD to dihydroxyacetone+NADH+H<sup>+</sup>. GldA activity was derived from the increase in absorbance at 340 nm resulting from the reduction of NAD; one unit reduces one micromole of NAD per minute at 25 °C and pH 10.0 under the specific conditions used [18].

## Phylogenetic analysis

*Emm1* genomes used in phylogenetic analysis were from the UK and are listed in the Supplementary Information. These comprise sequenced non-invasive *emm1* isolates ( $n=139$ ) [4]; sequenced invasive *emm1* isolates ( $n=40$ ) from two studies [4, 19]; 64 invasive *emm1* isolates from the British Society for Antimicrobial Chemotherapy (BSAC) collection [20]; and 23 *emm1* isolates from a hospital outbreak study [21]. Two new *emm1* genomes were sequenced from an additional outbreak and are available from the European nucleotide archive (Project PRJEB36425: ERS4267588 and ERS4267589). Raw reads were trimmed using trimmomatic version 0.36 [10] with default parameters. SNP calling was performed by mapping trimmed reads to the complete *emm1.0* MGAS5005 (CP000017) reference genome using Snippy v4.6.0 (<https://github.com/tseemann/snippy>), with a minimum coverage of 10, minimum fraction of 0.9 and minimum vcf variant call quality of 100. Gubbins v2.4.1 [22] was used to identify and remove recombinant regions from the resulting full genome alignment file. A maximum likelihood phylogeny was created from core SNPs using the general time-reversible (GTR) model of nucleotide substitution with the gamma distributed rate heterogeneity implemented in FastTree v2.1.10–4 [23]. Phylogenetic trees were visualized using FigTree v1.4.2 (<http://tree.bio.ed.ac.uk/software/figtree/>) and Microreact (<https://microreact.org/showcase>) and edited using INKSCAPE (<https://inkscape.org/pt/>).

## SpeA production

In preliminary work SpeA production by 135 non-invasive strains previously evaluated by transcription [4] was evaluated. SpeA production by 40 invasive *S. pyogenes* isolates was undertaken using cell-free culture supernatants from isolates cultured in THB for 6 h (overnight when testing  $n=135$  non-invasive isolates), concentrated 5× using Amicon filters, western blotting using a

rabbit polyclonal antibody to rSpeA and comparison with standard concentrations of rSpeA expressed from *Escherichia coli* as previously reported [4]. Supernatants with undetectable levels of SpeA were assigned an arbitrary value of half that of the lowest concentration detectable (usually 12.5 ng ml<sup>-1</sup>).

## Proteomics

In pilot studies (Experiment 1), five strains were randomly selected from each of M1<sub>UK</sub> or M1<sub>global</sub>, cultured in 50 ml CDM to an A<sub>600</sub> of 1.2–1.4 for 6 h at 37 °C with 5% CO<sub>2</sub>, and then cytosolic, cell wall and supernatant fractions were prepared for proteomic analysis. For proteomic analysis of sublineages (Experiment 2, cytosolic fractions only), strains were randomly selected from five phylogenetic branches within each lineage (five strains per sublineage, four sublineages in total). The supernatant fraction was removed, syringe filtered (Minisart 0.2 µm filter; Sartorius) and proteins precipitated overnight at 4 °C using 10% trichloroacetic acid precipitation. Cell-wall proteins were extracted from the bacterial pellet using 1 ml of 30% raffinose, centrifugation at 10000 r.p.m. for 5 min, followed by resuspending the pellet in 1 ml of cell wall extraction buffer (960 µl 30% raffinose, 10 µl of 1 M Tris-HCl pH 8, 10 µl of 10 kU ml<sup>-1</sup> mutanolysin, 10 µl of 100 mg ml<sup>-1</sup> lysozyme and 10 µl protease inhibitor cocktail III; Avantor VWR), followed by incubation at 37 °C for 3 h with occasional turning, and then aspiration of cell wall extract supernatant after centrifugation at 13000 r.p.m. for 10 min. The residual cytosolic fraction was further mechanically lysed via bead beating for three cycles for 45 s (Lysing Matrix B from MP Bio). The samples of each cellular fraction then underwent centrifugal concentration using 3 kDa filters and buffer was exchanged (Amicon Ultra-15; Millipore) with 50 mM Tris buffer at pH 8. The samples were then submitted to the Proteomics Facility of the National Phenome Centre (London, UK) for LC mass spectrometry (MS). Precipitated samples were dissolved in 8 M urea and 100 mM ammonium bicarbonate (AmBic) by sonicating for 10 min in a water bath. Total protein was determined in all samples by a protein assay (Protein Assay II; BioRad) according to the manufacturer's instructions. In total, 20 µg of protein was digested by the addition of 40 mM chloracetamide, 10 mM TCEP (Bondbreaker; ThermoScientific) and 0.2 µg trypsin in 100 mM AmBic. Proteins in 8 M urea were diluted to 1 M urea prior to the addition of trypsin and all samples left overnight at 37 °C. Desalting was performed by acidifying samples to 0.5% trifluoroacetic acid (TFA) and adding them to a pre-equilibrated uElution HLB desalting plate (Waters), washing (3×100 µl) with 0.5% TFA and eluting with 80% acetonitrile (3×50 µl). All washes were drawn through the plate under vacuum. Desalted peptides were dried completely at 45 °C in a vacuum-centrifuge.

For MS analysis, proteins were dissolved in 0.1% formic acid by sonicating in a water bath for 10 min. In total, 0.5 µg of peptides was separated over 90 min over a gradient of 10–40% acetonitrile at 0.5 µl min<sup>-1</sup> (0.1% formic acid) (M-Class UHPLC; Waters) by trapping (nanoE MZ Sym 5 µm 20 mm; Waters) and eluting across a 20 cm C18 column (nanoE MZ HSS T3 1.8 µm 75 µm×200 mm; Waters) and analysed by high definition mass spectrometry (HDMSe) (Synapt G2S; Waters). Data were acquired over 50–2000 *mz* for both low and high energy (switching every 1 s) in positive resolution mode. Lock mass (Leu-enkephalin) was acquired every 60 s. For fragmentation, a ramped collision energy was used between 19 and 45 eV. Data were searched and processed using Proteomics (FigShare) [24].

DE proteins with a fold change threshold of 1.5 (*P* value threshold 0.05) were visualized on volcano plots. Data comparisons are provided in the accompanying supporting Excel file [24]. Enrichment analysis and protein-protein interactions were performed using STRING (<https://string-db.org/>), a database able to predict direct (physical) and indirect (functional) associations based on collected data across a range of experimental and *in silico* protein interactions. Proteins with a percentage identity >90% and a 'combined interaction score' >0.7 were used to create a protein network in which the interaction between two proteins was inferred based on the information available in the STRING database and colour coded accordingly.

## RESULTS

### Transcriptome of M1<sub>UK</sub> *S. pyogenes*

When comparing four TH broth-cultured M1<sub>UK</sub> and four M1<sub>global</sub> *S. pyogenes*, significant differential expression of just seven genes was observed (Table 1). As expected, transcription of *speA* was upregulated ~5-fold in M1<sub>UK</sub> strains compared with other M1<sub>global</sub> strains; ~10-fold increased *speA* transcription by M1<sub>UK</sub> has previously been confirmed by qRT-PCR of RNA from 135 *emm1* isolates [4]. Unexpectedly, transcription of *glpF2*, a putative aquaporin (identified as Spy1573 in *emm1* reference strain MGAS5005), was 5-fold downregulated in M1<sub>UK</sub> strains. Bioinformatic analysis of the *S. pyogenes* aquaporin gene *glpF2* demonstrated similarity to the *glpF3* family of *Lactobacillus plantarum* reported to be associated with both glycerol and water, but also dihydroxyacetone (DHA) transport [25].

The remaining five DE transcripts that were upregulated in M1<sub>UK</sub> represented consecutive ORFs in an apparent operon that includes glycerol dehydrogenase (*gldA*), pyruvate formate lyase (*pflD*) and a transaldolase-like protein (*talC* or *mipB*) as well as phosphotransferase (PTS) system IIC and IIB component genes, annotated as cellobiose-specific.

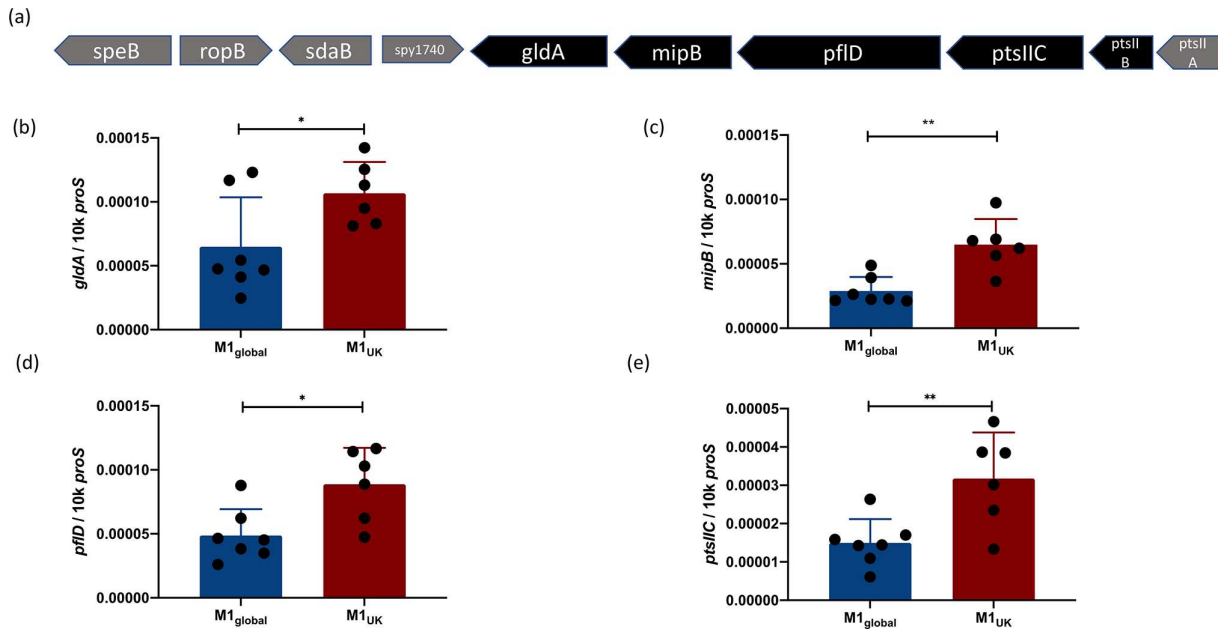
**Table 1.** Differentially expressed genes comparing four M1<sub>UK</sub> and four M1<sub>global</sub> strains

Gene ID	Gene name	Description	Average log <sub>2</sub> fold change	Average P <sub>adj</sub>	Strand
M5005_Spy0996	<i>speA2</i>	Enterotoxin	2.361	3.731E-09	+
M5005_Spy1573	<i>glpF2</i>	Glycerol uptake facilitator protein	-2.423	5.143E-09	-
M5005_Spy1741	<i>gldA</i>	Glycerol dehydrogenase	1.024	0.0006	-
M5005_Spy1742	<i>mipB</i>	Transaldolase	1.043	0.0002	-
M5005_Spy1743	<i>pflD</i>	Formate acetyltransferase	0.963	0.0007	-
M5005_Spy1744	NA	PTS system, cellobiose-specific IIC component	0.653	0.0061	-
M5005_Spy1745	NA	PTS system, cellobiose-specific IIB component	0.749	0.0204	-

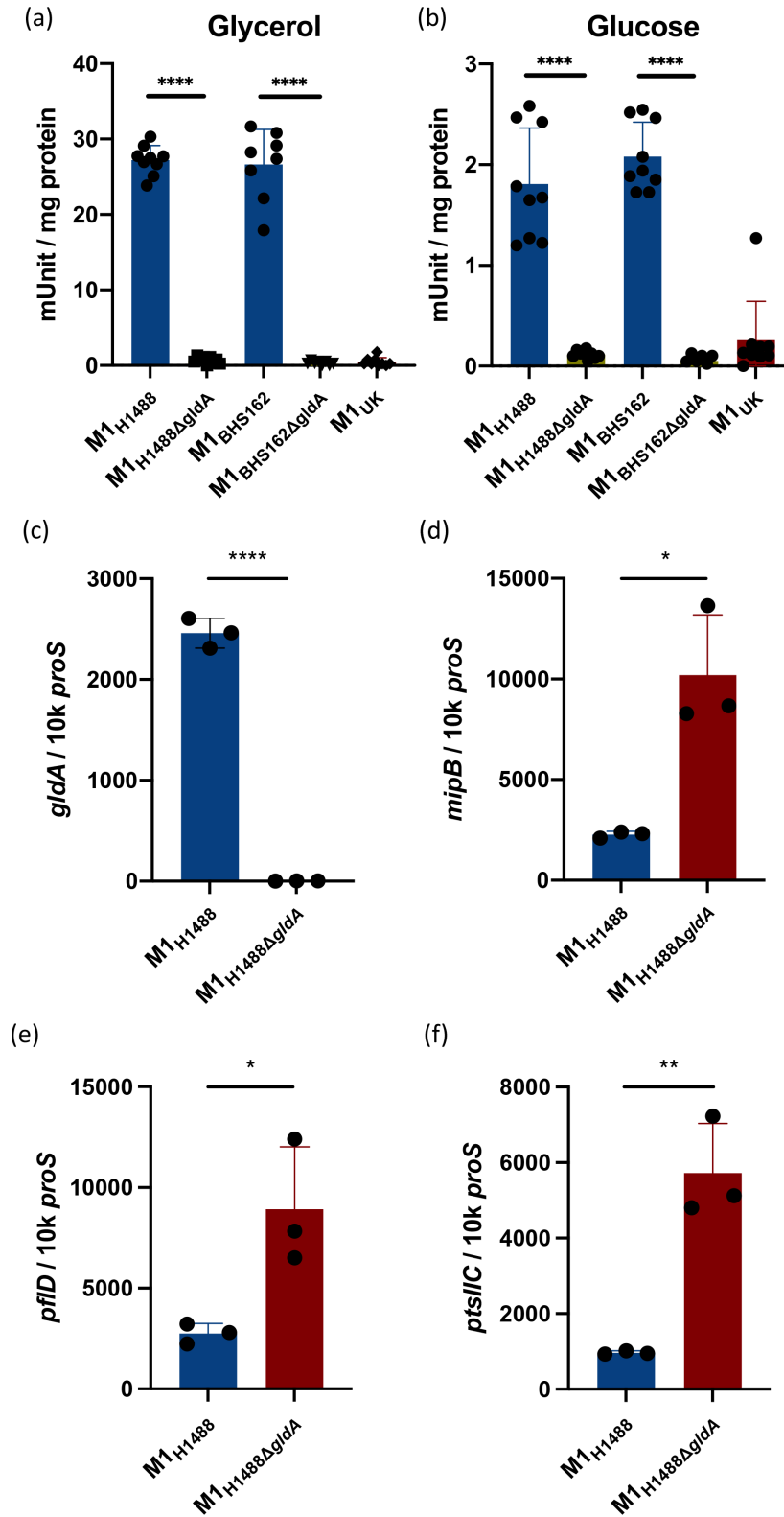
**GldA operon**

A single SNP in the glycerol dehydrogenase gene *gldA* among all M1<sub>UK</sub> strains is known to introduce a premature stop codon at position 175 of the 362 residue enzyme and is predicted to result in a truncated protein with abrogated enzyme activity [4]. The gene *gldA* is the final ORF in the sequence of genes that was found to be differentially expressed (Fig. 1a). Differential expression of genes comprising the apparent operon was confirmed using qRT-PCR (Fig. 1b–e). Transcription of the aquaporin gene was evaluated in three strains from each lineage, and although non-significant, there was a 2-fold reduction in transcription in M1<sub>UK</sub> (Fig. S1).

We hypothesized that the loss of GldA enzyme activity may in some way feedback on transcription of the adjacent PTS subunit EII genes, as well as *mipB* and *pflD*. To determine the impact of isolated loss of GldA function in *S. pyogenes*, *gldA* was disrupted through allelic replacement in M1<sub>global</sub> strain M1<sub>H1488</sub> to create M1<sub>H1488ΔgldA</sub>. A GldA enzyme activity assay was undertaken, in the presence of glycerol and glucose, to confirm that enzyme function was present in the parent strain, but abrogated in the mutant (Fig. 2a, b); this was replicated using a second pair of isogenic M1<sub>global</sub> strains (M1<sub>BHS162</sub> and M1<sub>BHS162ΔgldA</sub>). By comparison, M1<sub>UK</sub> strain BHS581 demonstrated barely detectable GldA activity, similar to the knockouts. RNA from M1<sub>H1488</sub> and the isogenic M1<sub>H1488ΔgldA</sub> was subject to RNA-seq to compare the wider transcriptome of *S. pyogenes* in the absence of a functional *gldA* gene. There were almost no changes in the transcriptome except in the genes of the putative *pflD–mipB–gldA* operon; deletion of



**Fig. 1.** The genes within the *pflD–mipB–gldA* operon are upregulated in M1<sub>UK</sub>. Five adjacent genes were found to be upregulated in M1<sub>UK</sub> compared to M1<sub>global</sub> (a). Genes upregulated in RNA-seq are shown in black and include two components of a PTS annotated as PTS system (cellobiose) subunits IIC and IIB. qRT-PCR using RNA from M1<sub>global</sub> (n=7) and M1<sub>UK</sub> (n=6) strains indicating transcription of *gldA* (b); *mipB*, also known as *talC* (c); *pflD* (d); and PTS subunit IIC (e). Data points (black dots) represent different strains that were each tested in technical triplicates and expressed as copies per 10000 copies of *proS*. Error bars show sd of the mean. \*\*P<0.01 using an unpaired t-test; \*P<0.05.



**Fig. 2.** Loss of GldA function is associated with upregulated expression of adjacent genes. Glycerol dehydrogenase activity in *S. pyogenes* M1<sub>global</sub> is abrogated following inactivation of the *gldA* gene, to the level observed in M1<sub>UK</sub>. Activity in the parent strain was greatest when cultured in the presence of glycerol (a) and less in glucose (b). Data show eight or nine individual reactions for each strain. Deletion of the *gldA* gene resulted in markedly reduced transcription of *gldA* (c), and upregulated transcription of *mipB* (d), *pflD* (e) and PTS component IIC (f). Data show three biological replicates per strain. Error bars show sd of the mean. \**P*<0.05; \*\**P*<0.01; \*\*\**P*<0.0001 using a Mann–Whitney U test (a, b) and unpaired *t*-test (c–f).

**Table 2.** RNA-seq comparison of *gldA*-mutant *S. pyogenes* and parent strain

Gene ID	Gene name	Description	Average log <sub>2</sub> fold change*	Average P <sub>adj</sub>	Strand
M5005_Spy0008	<i>divIC</i>	Cell division protein	-1.003	0.032	+
M5005_Spy0123	NA	Translation initiation inhibitor	1.152	0.016	+
M5005_Spy0124	<i>sloR</i>	Transcriptional regulator	1.250	0.0009	
M5005_Spy1166	NA	Hypothetical protein	-1.094	0.0001	-
M5005_Spy1258	NA	Putative cytosolic protein	-1.361	0.019	-
M5005_Spy1541	NA	Hypothetical protein	-1.030	0.018	-
M5005_Spy1741	<i>gldA</i>	Glycerol dehydrogenase	-9.212	1.111E-05	-
M5005_Spy1742	<i>mipB</i>	Transaldolase	1.367	1.91E-03	
M5005_Spy1743	<i>pflD</i>	Formate acetyltransferase	1.394	0.0019	
M5005_Spy1744	NA	PTS system cellobiose-specific IIC	1.036	0.0036	-

\*Comparison is made between M1<sub>H1488gldA</sub> and parent strain M1<sub>H1488</sub>; only genes differentially expressed by at least log<sub>2</sub> fold value of 1.0 are shown, P<0.05. Genes from the same predicted operon are shaded in grey.

*gldA* abrogated transcription of *gldA* as expected, but was associated with a clear increase in transcription of *pflD*, *mipB* and the adjacent PTS system cellobiose-specific IIC genes. (Table 2). Upregulation of two genes adjacent to one another, Spy0123 and Spy0124 (including *sloR*), was also observed.

Significant downregulation of *gldA* transcription, and upregulation of the adjacent genes was confirmed by qRT-PCR (Fig. 2c–f). Taken together, the data suggested that loss of GldA activity led to upregulation of the entire operon that is concerned with metabolism of DHA, fructose 1,6 phosphate and pyruvate. *S. pyogenes* has been reported to use a number of carbon sources; however, under conditions where *emm1 S. pyogenes* grew well in CDM supplemented with glucose, we were unable to demonstrate any growth in CDM supplemented with glycerol alone, consistent with other reports [26] (data not shown). Informatic analysis of publicly available genomes from a range of bacterial species demonstrated remarkable conservation of the genes and organization of this region in all members of the *Streptococcaciae* compared with other species (Fig. S2).

### Intermediate sublineages of *emm1 S. pyogenes*

M1<sub>UK</sub> strains are distinguished from older *emm1* strains by the presence of 27 SNPs [4] (Table 3). Although a number of additional indels are common in M1<sub>UK</sub>, only the 27 SNPs define the new lineage. When analysing genomes from *S. pyogenes* strains isolated in the UK, we identified small numbers of strains with either 13 or 23 of the 27 SNPs [4]. All *emm1* sublineages except M1<sub>global</sub> possessed three SNPs in the transcriptional regulator RofA, but the *gldA* stop codon is present only in strains with 23 or 27 SNPs. (Table 3). We analysed our original non-invasive *S. pyogenes* whole genome sequences alongside other sequenced UK *emm1* strains (Table S2) and enriched for sublineages by including 10 invasive isolates from each of the following groups: M1<sub>global</sub>, M1<sub>13SNPs</sub>, M1<sub>23SNPs</sub> and M1<sub>UK</sub> (Fig. 3). As reported before, the earliest M1<sub>UK</sub> strain identified was 2010, but the earliest M1<sub>13SNPs</sub> strain was 2005, from the BSAC collection [20].

### SpeA expression by sublineages

Previous comparison had demonstrated ~10-fold greater *speA* gene transcription by non-invasive M1<sub>UK</sub> isolates compared to non-invasive M1<sub>global</sub> strains [4]; we first established that SpeA protein expression was similarly elevated in the same large panel of non-invasive isolates (Fig. S3). There was an indication that SpeA production was not increased in a small number of strains from intermediate lineages. To better understand the impact of the step-wise changes in SNP content, we examined *speA* gene transcription and protein production in a new set of strains. To include sufficient numbers of intermediate sublineage isolates, we used 40 strains from a larger national collection of invasive *emm1 S. pyogenes* that had been submitted to the reference laboratory and were previously sequenced [4, 19].

Transcription of *speA* was low in all M1<sub>global</sub> and M1<sub>13SNPs</sub> strains, except for the occasional strain with a mutation in *covRS*, a two-component system regulator known to suppress virulence factors, but which can undergo mutation to confer a more invasive phenotype in *emm1* and other *S. pyogenes* strains. In contrast, transcription of *speA* was high in all invasive strains with 23 or 27 SNPs (Fig. 4a). Likewise, SpeA protein production differed markedly between the sublineages; again SpeA production was greatest in all invasive isolates with 23 or 27 SNPs and was hard to detect in all M1<sub>global</sub> and M1<sub>13SNPs</sub> (Fig. 4b). Indeed, the amount of SpeA produced routinely by M1<sub>UK</sub> strains was similar to that produced by M1<sub>global</sub> strains with mutations in *covRS*, a regulator that is known to repress *speA* in *emm1* [27]. We did not detect a difference in production of other

Table 3. SNPs in sublineages

Position in MGAS5005	Gene locus	Gene	Product	S/NS	Ref	SNP	M1 <sub>13SNPs</sub>	M1 <sub>19SNPs</sub> *	M1 <sub>23SNPs</sub>	M1 <sub>27SNPs</sub> †
115646	M5005_Spy0106	<i>rofA</i>	Transcriptional regulator	NS	C	T	T	T	T	T
116162	M5005_Spy0106	<i>rofA</i>	Transcriptional regulator	NS	A	C	C	C	C	C
116163	M5005_Spy0106	<i>rofA</i>	Transcriptional regulator	NS	C	A	A	A	A	A
250832	M5005_Spy0243		ABC transporter-associated protein	S	T	C	T	T	C	C
513254	M5005_Spy0525		Galactose-6-phosphate isomerase LacB	NS	G	T	T	T	T	T
528360	Intergenic		-	-	A	T	A	T	T	T
563631	M5005_Spy0566	<i>sagE</i>	Streptolysin S putative self-immunity protein	NS	G	A	G	G	A	A
613633	M5005_Spy0609		Phosphoglycerol transferase	NS	T	C	C	C	C	C
626494	M5005_Spy0623		Methyltransferase	S	G	A	A	A	A	A
661707	M5005_Spy0656	<i>trmD</i>	tRNA (guanine-N (1)-)-methyltransferase	NS	G	A	G	A	A	A
730823	M5005_Spy0727	<i>recJ</i>	ssDNA-specific exonuclease	NS	C	T	T	T	T	T
784467	M5005_Spy0779		Putative membrane spanning protein	S	T	C	T	T	C	C
819098	M5005_Spy0825	<i>murB</i>	UDP-N-acetylenolpyruvoylglucosamine reductase	NS	G	A	G	A	A	A
923079	M5005_Spy0933		Putative NADH-dependent flavin oxidoreductase	NS	G	A	G	A	A	A
942633	M5005_Spy0951	<i>pstB</i>	Phosphate transport ATP-binding protein	NS	G	T	G	G	G	T
983438	Intergenic/within <i>ssrA</i>		-	-	G	C	G	G	C	C
1082253	M5005_Spy1108	<i>metK2</i>	S-Adenosylmethionine synthetase	NS	C	T	T	T	T	T
1238124	M5005_Spy1282	<i>msrA</i>	Peptide methionine sulphoxide reductase	NS	G	A	A	A	A	A
1238673	M5005_Spy1283	<i>tlpA</i>	Thiol:disulphide interchange protein	NS	G	A	A	A	A	A
1251193	M5005_Spy1293		Hypothetical protein	NS	G	A	G	G	G	A
1373176	M5005_Spy1400		PTS system, galactose-specific IIB component	NS	C	A	C	C	C	A
1407497	M5005_Spy1439		Portal protein	NS	C	T	T	T	T	T
1446116	M5005_Spy1490		3-Oxoacyl-[acyl-carrier protein] reductase	S	C	T	T	T	T	T
1535209	Intergenic		-	-	A	G	A	A	A	G
1702540	M5005_Spy1714	<i>gldA</i>	Glycerol dehydrogenase	STOP	C	T	C	T	T	T
1734749	M5005_Spy1772		Glutamate formimidoyltransferase	NS	G	A	A	A	A	A
1828734	M5005_Spy1860		Putative membrane spanning protein	NS	G	A	G	A	A	A

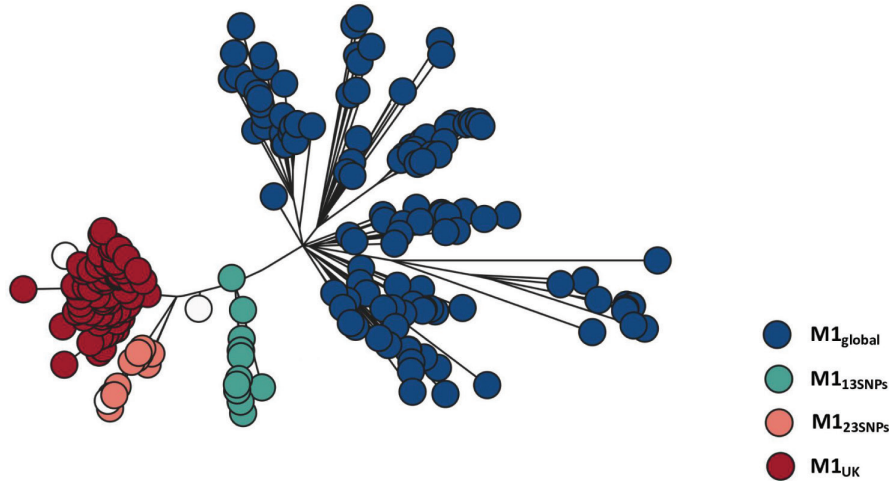
\*Single strain with 19 of the 27 SNPs that characterize M1<sub>UK</sub> (not a sublineage).

†Lineage with 27 SNPs is equivalent to M1<sub>UK</sub>.

virulence factors such as SpyCEP, SpeB or M protein, in broth culture (data not shown). We concluded that the genetic changes required for basal increased *speA* expression in M1<sub>UK</sub> resided in M1<sub>23SNPs</sub> but not M1<sub>13SNPs</sub>.

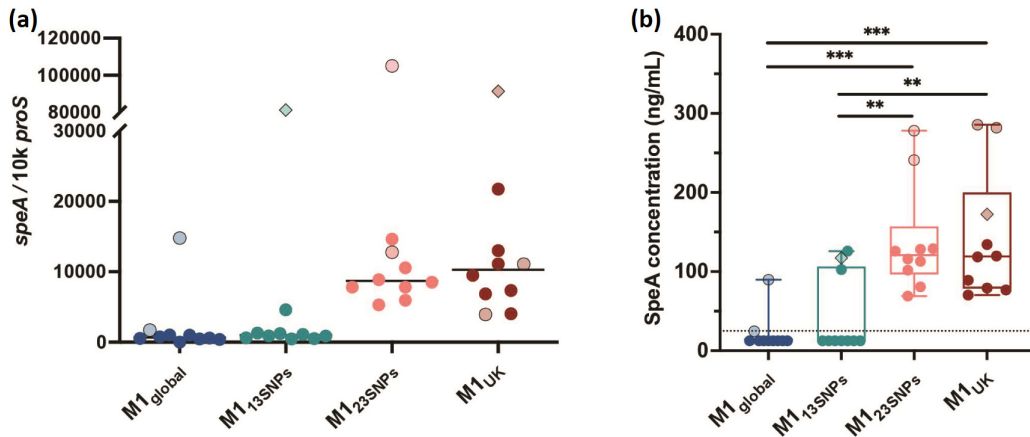
Isogenic isolates that differed by just single SNPs were available from two outbreak settings. Interestingly, in both settings, a single isolate was identified wherein a single SNP from the 27 SNPs that define M1<sub>UK</sub> reverted to the wild-type. In one daycare centre outbreak, a non-invasive isolate exhibited only 26 of the 27 SNPs but was otherwise identical to an invasive isolate from the same cluster; in this case, the SNP in *trmD*, a tRNA (guanine-N (1)-)-methyltransferase, had reverted to the wild-type. This isolate made as much SpeA as the isolate with 27 SNPs.

In a separate hospital outbreak associated with a fatal case of invasive infection caused by the M1<sub>23SNPs</sub> sublineage [21], one isolate from a healthcare worker was identical to five other isolates in the cluster, apart from one single SNP. This single SNP represented one of the 23 SNPs but is present in both M1<sub>13SNPs</sub> and M1<sub>23SNPs</sub>, a phage portal protein (Spy1439). This isolate also produced the same amount of SpeA as the parent M1<sub>23SNPs</sub> strain, demonstrating the SNPs that were dispensable for increased SpeA expression.



**Fig. 3.** Phylogeny of M1<sub>UK</sub>, M1<sub>global</sub> and two intermediate sublineages. Maximum likelihood phylogenetic tree reconstructed from core SNPs (without recombination regions) of 269 invasive and non-invasive *emm1* *S. pyogenes* isolate genomes representative of four main groups (M1<sub>global</sub>, M1<sub>13SNPs</sub>, M1<sub>23SNPs</sub>, M1<sub>UK</sub>). The phylogenetic tree is coloured as described in the key. White bubbles represent isogenic strains from two distinct outbreaks with 26 and 22 SNPs, respectively, and one invasive isolate with 19 SNPs. Isolate whole genome sequences used in the phylogenetic tree are listed in Table S2.

A review of published UK *emm1* genome sequences [20] identified a single strain with 19 of the 27 SNPs among *emm1* bloodstream isolates. Unlike the sublineage that possessed 23 SNPs, this M1<sub>19SNPs</sub> strain did not produce detectable quantities of SpeA, pointing to an influential role for the four SNPs that differentiate M1<sub>19SNPs</sub> and the M1<sub>23SNPs</sub> sublineage in SpeA expression. Of these four SNPs, two were synonymous SNPs and unlikely to affect phenotype; one was a non-synonymous SNP in *sagE*; while the final change was an SNP that appeared to be intergenic in annotated *emm1* *S. pyogenes* genomes but lies within the start of the tmRNA *ssrA* [28] upstream of the phage insertion and start site of *speA* (Spy0996 in MGAS5005). RNA-seq read abundance in this region did not show a difference between M1<sub>global</sub> and M1<sub>UK</sub> strains, with the exception of



**Fig. 4.** SpeA expression is increased in M1<sub>23SNPs</sub> and M1<sub>UK</sub> sublineages. (a) Transcription of *speA* using 10 isolates from each sublineage is shown (total  $n=40$ ). Each dot represents a single isolate (measured in triplicate) with light shading/fine black outline indicating the presence of a *covRS* mutation. Two isolates possessed both *covRS* and *rgg4* mutations (diamond shapes). Solid line represents the median. There was no statistically significant difference between the sublineages in *speA* transcription, largely related to the outlying *covRS* mutants in each sublineage. Excluding isolates with *covRS* mutations a difference was observed between M1<sub>global</sub> and either M1<sub>23SNPs</sub> or M1<sub>UK</sub> ( $P<0.0001$ ), and a difference between between M1<sub>13SNPs</sub> and either M1<sub>23SNPs</sub> or M1<sub>UK</sub> ( $P=0.0002$ ). Median fold difference M1<sub>UK</sub> versus M1<sub>global</sub> was 15.2 including all strains tested. (b) SpeA protein production by 40 invasive isolates (10 in each sublineage) cultured for 6 h in THB. Limit of detection was 25 ng ml<sup>-1</sup>. Isolates with undetectable SpeA were assigned a value of 12.5 ng ml<sup>-1</sup>. Median fold difference M1<sub>UK</sub> versus M1<sub>global</sub> was 9.5 including all strains tested. Box plot shows median and range. A multiple comparisons test was made using one-way ANOVA (Tukey's): \*\* $P<0.01$ ; \*\*\* $P<0.001$ .

the gene encoding SpeA. Abundance of reads in the ‘paratox’ (Spy0995) gene, which is transcribed on the opposite strand to *speA*, was increased in two of four M1<sub>UK</sub> strains, but this finding was not consistent.

### Proteomic analysis of *S. pyogenes emm1* sublineages

To screen for lineage-specific differences in proteomes, cell wall, cytosolic and supernatant fractions of five randomly selected M1<sub>UK</sub> isolates were compared with five M1<sub>global</sub> following culture in CDM. Though SpeA was detected, a significant difference between M1<sub>UK</sub> and M1<sub>global</sub> supernatants was not observed when strains were cultured in CDM, in contrast to results (reported above) in THB, pointing to a role for specific culture conditions in induction of SpeA. CDM supernatant from M1<sub>UK</sub> strains demonstrated increased phage-encoded DNase (Spd3), acid phosphatase (LppC) and a DNA binding protein compared with M1<sub>global</sub>. However, CDM supernatant from M1<sub>global</sub> demonstrated increased phosphoglycerate mutase and phosphofructokinase, both of which are linked to carbohydrate utilization pathways in *S. pyogenes* (Figs 5a and S4A) [29]. Cell wall fractions demonstrated a small number of proteins that were differentially expressed in M1<sub>UK</sub> strains. These included a more than 3-fold increase in PrsA2 (Spy1732, AAZ52350.1), which controls protein folding and may operate at the ExPortal [30], and almost 2-fold increases in GAPDH and the 10kDa chaperonin GroES compared with M1<sub>global</sub> (Figs 5b and S4B).

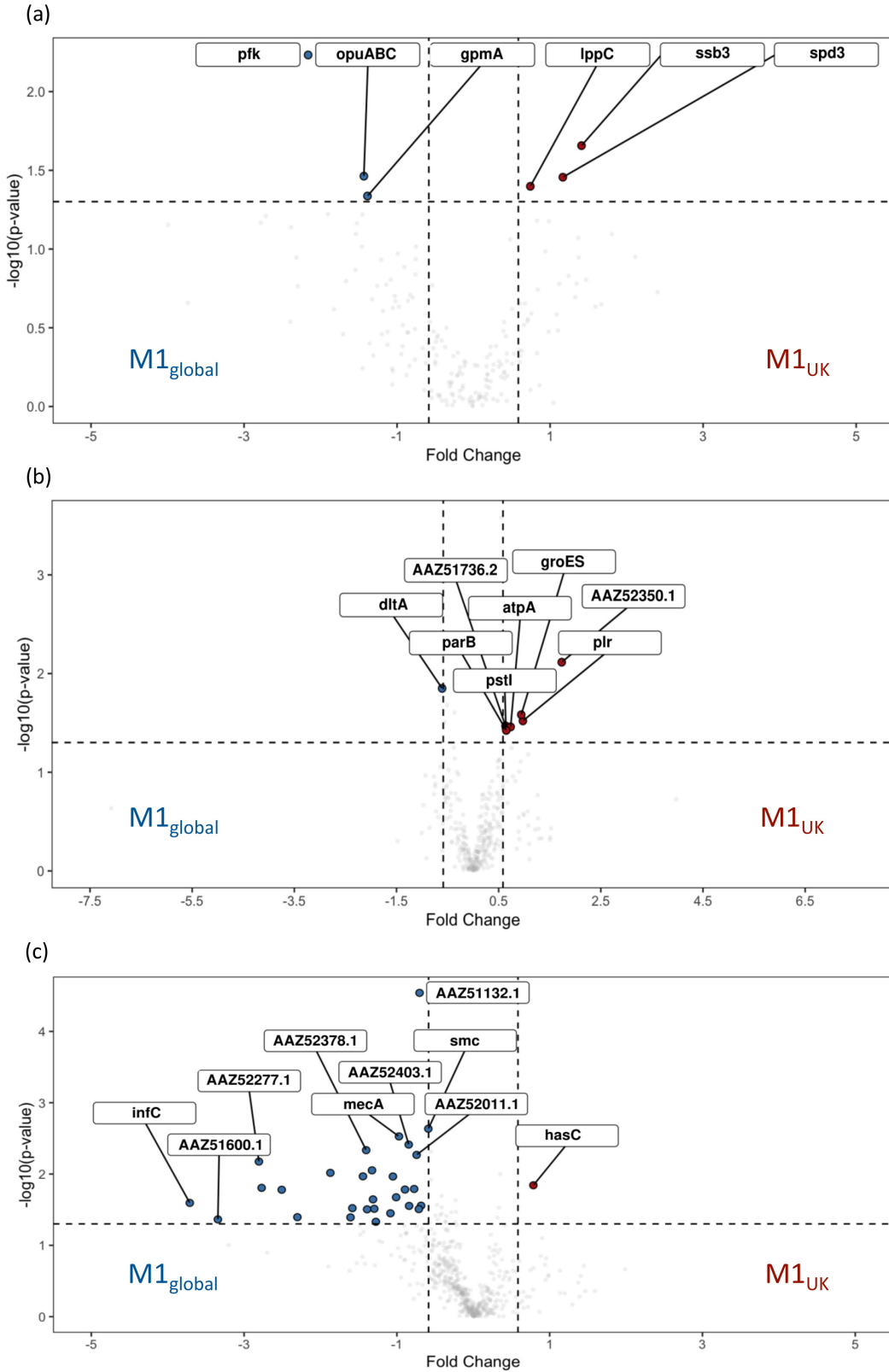
In M1<sub>global</sub> strains, several cytosolic proteins were increased compared to M1<sub>UK</sub>, including those encoded by adjacent genes Spy0438 (*rnc*, ribonuclease III) and Spy0439 (*smc*) as well as *mecA*, coding for an adapter protein and negative regulator of competence; the greatest fold changes were, however, seen in InfC, an Initiation Factor 3, SatD, and a number of proteins linked to protein secretion (SecA), maintenance of ribosomal function and RNA. String analysis highlighted links between phosphoenolpyruvate carboxylase (PpcA), protein synthesis pathways (GidA) and acid tolerance (SatD) (Figs 5c and S4C).

To screen for differences between all four sublineages (two intermediate and two major sublineages), five isolates from each intermediate sublineage (M1<sub>13SNPs</sub> and M1<sub>23SNPs</sub>) were randomly selected from appropriate phylogenetic branches as well as five new isolates from each of M1<sub>UK</sub> and M1<sub>global</sub>. Fresh cytosolic fractions of the four phylogenetic groups (20 strains) were prepared and subject to new proteomic analysis. The data were then analysed by comparing groups in different combinations. When cytosolic preparations from all four sublineages were compared with one another, FruR production was increased in M1<sub>23SNPs</sub> in comparison to other lineages, and lowest in M1<sub>global</sub> while a network of ribosomal proteins was increased in M1<sub>13SNPs</sub> (Fig. S5A). Comparison of cytosolic preparations from new M1<sub>UK</sub> and M1<sub>global</sub> strains did not identify the same DE features seen previously; however, a negative regulator of competence, *MecA*, again was increased in M1<sub>global</sub> strains although only by 1.3-fold (Fig. S5B). The biggest fold change was a 3.6-fold increase in FruR and 5.87-fold increase in Mur1.2, a potential autolysin (adjacent to a PTS fructose-specific IIABC system and *fruR*), in M1<sub>UK</sub> isolates (Fig. 6a). As M1<sub>UK</sub> and M1<sub>23SNPs</sub> strains had demonstrated comparable SpeA production, we proceeded to determine if there was commonality between these two sublineages by comparing cytosolic proteomes of [M1<sub>UK</sub> and M1<sub>23SNPs</sub>] with [M1<sub>global</sub> and M1<sub>13SNPs</sub>]. NtpA and B, a V type ATPase, was increased in [M1<sub>global</sub> and M1<sub>13SNPs</sub>]. Proteins linked to ligase activity were found to be enriched in string analysis and highest in [M1<sub>global</sub> and M1<sub>13SNPs</sub>] (Figs 6b and S5C). When considering M1<sub>global</sub> compared with all other three ‘new’ lineages, carbohydrate metabolism genes were further highlighted, specifically PTS system and disaccharide metabolic processes (Fig. S5D). As observed, FruR was four-fold increased in non-M1<sub>global</sub> strains, with increased FruA in M1<sub>global</sub> strains; a similar pattern was seen for LacR and LacA1/LacA2 (Figs 6c and S5D). A glutamate formiminotransferase (MGAS5005\_Spy1772) was also increased in M1<sub>global</sub> strains compared with non-M1<sub>global</sub>. Finally, comparing cytosolic proteins in M1<sub>UK</sub> with all other lineages, just one protein was clearly relatively increased in M1<sub>UK</sub>, and this was Spy0848 (PpnK), an ATP-NAD kinase (Figs 6d and S5E).

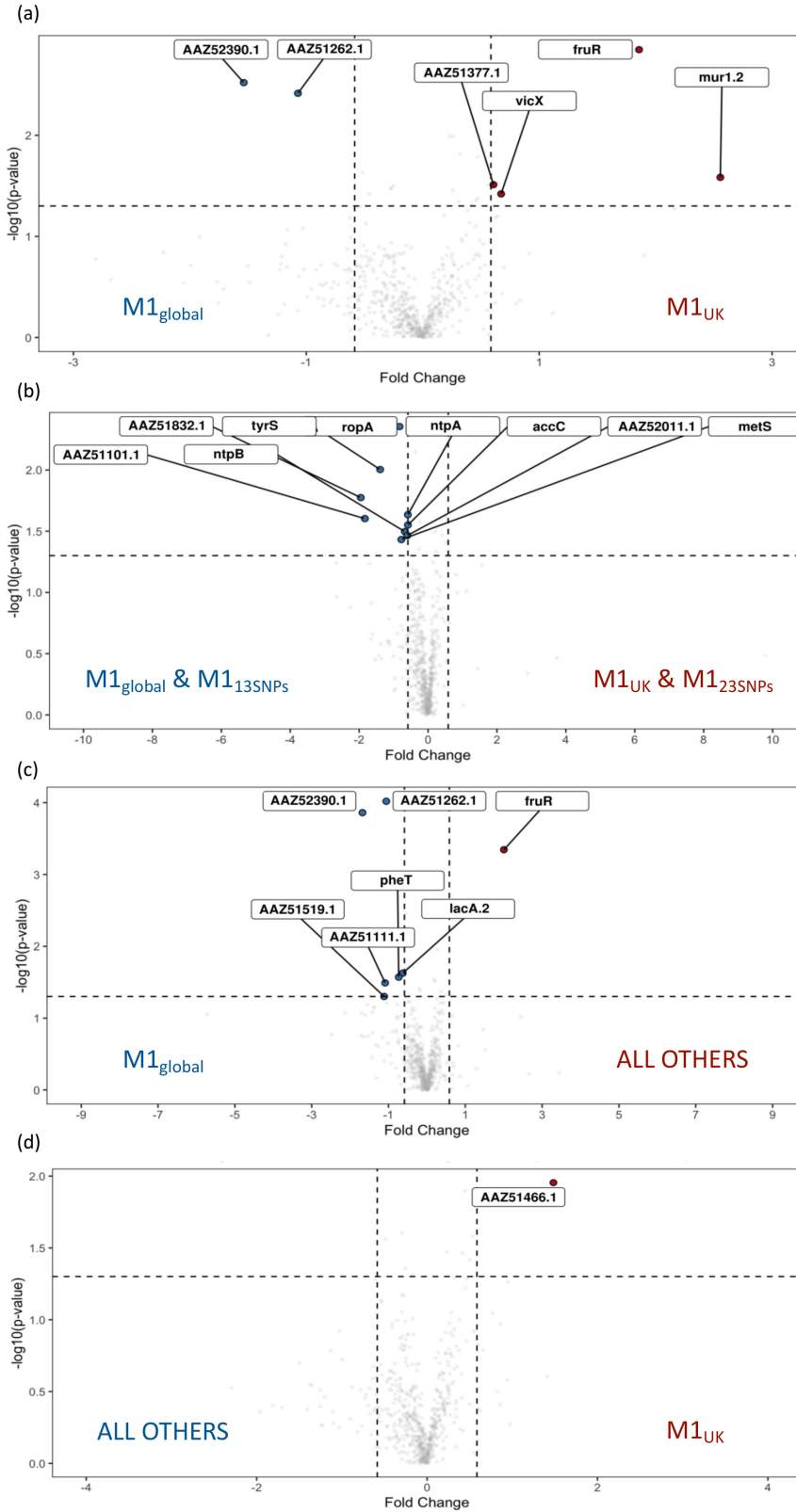
## DISCUSSION

M1<sub>UK</sub> is now the dominant *S. pyogenes emm1* lineage in the UK, having expanded during an earlier upsurge in scarlet fever in 2014–2016 [4, 5]. Importantly, *emm1* strains are inherently virulent and represent the single most frequent *emm* type causing invasive infections in the UK [31, 32]. As such, any change in the *emm1* lineage that results in increased fitness is of relevance to public health. In this first systematic study to characterize the changes in M1<sub>UK</sub> and its associated lineages, we have confirmed the *speA* over-expression phenotype, and demonstrated that increased SpeA production is restricted to M1<sub>UK</sub> and an increasingly rare sublineage M1<sub>23SNPs</sub>. The phenotype is manifest in broth culture but not CDM. M1<sub>UK</sub> is defined by just 27 SNPs in the core genome, including three SNPs in a stand-alone regulator *rofA* and a stop codon in glycerol dehydrogenase, *gldA*. RNA-seq demonstrated a difference in expression of the operon that includes *gldA* and a PTS system EIIC and B which represents a combined phosphate and sugar transporter, pointing to a potential shift in metabolism in the new lineage. This was accompanied by a sharp reduction in transcripts for the aquaporin gene *glpF2*. Preliminary proteomic analysis of strains by sublineage identified altered carbohydrate pathways related to fructose that may well be important.

Alterations in expression of *gldA*, *mipB*, *pflD*, and the adjacently encoded PTS system impact on the glycolytic Embden–Meyerhof–Parnas pathway [29] which, in *S. pyogenes*, relies on the phospho-enolpyruvate PTS system for acquisition of sugars other than glucose, and for transfer of phosphate ions required for carbon catabolite repression and gene regulation [33].



**Fig. 5.** Volcano plots comparing proteins differentially produced by  $M1_{\text{UK}}$  vs.  $M1_{\text{global}}$  cultured in CDM.  $\log_2$  fold change is shown on the x-axis. Specific fractions examined were supernatant (a), cell wall (b) and cytosol (c). Proteins increased in  $M1_{\text{UK}}$  are shown on the right in red. Those increased in  $M1_{\text{global}}$  are shown on the left in blue. Comparisons are listed in the supporting Excel file (Figshare) [24].



**Fig. 6.** Volcano plots comparing proteins differentially produced when considering different pairings of M1<sub>global</sub>, M1<sub>13SNPs</sub>, M1<sub>23SNPs</sub> and M1<sub>UK</sub> cultured in CDM. Log<sub>2</sub> fold change is shown on the x-axis. Cytosolic fractions only were compared as follows: (a) M1<sub>UK</sub> vs. M1<sub>global</sub>, (b) [M1<sub>UK</sub> + M1<sub>23SNPs</sub>] vs. [M1<sub>global</sub> + M1<sub>13SNPs</sub>], (c) all other sublineages vs. M1<sub>global</sub> and (d) M1<sub>UK</sub> vs. all other sublineages. Comparisons are listed in the supporting Excel file (Figshare) [24].

The results indicate that both the premature stop codon in *gldA* present in M1<sub>UK</sub> and allelic replacement of *gldA* impact glycerol dehydrogenase activity and result in upregulation of the other genes in the operon, *mipB* and *pflD*. These are involved in the glycolytic pathway required for generation and metabolism of pyruvate from glucose; the changes in carbohydrate metabolism are supported by proteomic findings that indicate alterations in fructose pathways. Interestingly, increased transcription in this operon was accompanied by increased transcription of adjacent PTS components IIC and IIB when comparing M1<sub>UK</sub> with M1<sub>global</sub> and following experimental deletion of *gldA*. This PTS is annotated as being a cellobiose transporter; systematic experimental disruption of PTS EII systems in *S. pyogenes* has not shown an essential role for these genes, but the precise sugar transported is not known [33].

The role of GldA in *S. pyogenes* has not been experimentally examined previously; GldA is reported to catalyse the conversion of glycerol to DHA under microaerophilic or anaerobic conditions, but it is clear that GldA may also undertake a reverse role, which is to catalyse DHA to glycerol. This may be of importance since an absence of *gldA* activity may lead to a build-up of DHA, which when converted to methylglyoxal can be toxic [34]. Upregulation of the PTS system is of interest since these are recognized to be key players in a phosphorelay process that maintains central carbon catabolite repression of many virulence systems in *S. pyogenes* [33, 35].

The marked ~5-fold downregulation of aquaporin *glpF2* (Spy1573) transcription in M1<sub>UK</sub> compared to M1<sub>global</sub> was unexpected but may represent an adaptation to the metabolic changes that have arisen in M1<sub>UK</sub>. There are few reports, if any, relating to *glpF2* in *S. pyogenes* but there is evidence of functional links to the *pflD*-containing operon in enterococci [36]. Notably one of the intergenic SNPs that defines M1<sub>UK</sub> is 39 bp from the start codon of the Spy1573 gene, though the significance of this is not yet known. Aquaporins are membrane proteins that function as channels for water and other uncharged solutes in all forms of life. While mostly considered as channels for water or glycerol in bacteria, potentially important to osmoregulation, aquaporins also can function as a channel for DHA. Indeed, there are similarities between *glpF2* of streptococci and *glpF3* of *Lactobacillus plantarum* that points to a possibility for action as a channel for DHA or similar molecules [25]. Research undertaken in the related *Lactococcus lactis* has also identified marked downregulation of *glpF2* following osmotic stress [37]. Taken together it would seem that the downregulation of *glpF2* may be a necessary adaptation for M1<sub>UK</sub> *S. pyogenes*, although it may also confer an as-yet unknown advantage.

The upregulation of SpeA expression by M1<sub>UK</sub> is clearly of importance to virulence, particularly in interaction with the human host, and those who have not yet mounted an immune response to the secreted toxins of this species. There is good evidence that superantigens such as SpeA undermine development of the adaptive host immune response to *S. pyogenes* through promotion of a dysregulated T cell response associated with B cell death [38, 39]. SpeA has also been shown to promote carriage of *S. pyogenes* in the nasopharynx of transgenic mice [40]. To date, the expression of SpeA has only been measured in broth culture and we do not know if the upregulation in M1<sub>UK</sub> might differ *in vivo*. Recent epidemiological studies found a high (44%) secondary infection rate in schoolchildren and household contacts of a case of scarlet fever caused by M1<sub>UK</sub>, pointing to a potential transmission advantage compared with other *S. pyogenes* lineages [41]. We identified sublineage-specific altered expression of SpeA, allowing us to highlight the genetic changes likely to account for this. Importantly, the three SNPs identified in the major regulator *rofA* do not alone account for the SpeA phenotype since these SNPs are present in M1<sub>13SNPs</sub>, although we cannot discount a role for these in the wider success of this lineage. While the genetic changes required for increased SpeA expression do not reside in M1<sub>13SNPs</sub>, they do reside in M1<sub>23SNPs</sub>, and strains with reversion of single SNPs pointed to a potential key role for the *ssrA* SNP in SpeA upregulation. The amount of SpeA made by M1<sub>UK</sub> and M1<sub>23SNPs</sub> was augmented to the level of M1<sub>global</sub> *covRS* mutants yet presumably without the fitness burden of *covRS* mutation that might impair pharyngeal carriage [42].

There are a number of limitations to our study. First, investigation of the *gldA* operon is in its early stages; it is possible that the premature stop codon mutation in *gldA* confers an additional phenotype that is not recapitulated by *gldA* gene deletion, while the metabolic pathways that include GldA, MipB and PflD are not fully understood. The roles of GlpF2 and the PTS EII system that is upregulated are also not understood; any role in transfer of DHA, for example, has not been experimentally addressed. The proteomic studies are preliminary and require both validation and repetition using richer media, but have provided a rationale for further study of the role of sugar metabolism in *emm1 S. pyogenes*. Finally, the role of specific SNPs would necessarily require experimental proof.

Several European countries are, at the time of writing, affected by epidemic waves of invasive *S. pyogenes* disease, notably in England, where the leading cause of invasive infection is *emm1*, underlining the importance of understanding pathogenicity and transmission [32, 43]. Importantly, however, despite the enhanced production of SpeA by M1<sub>23SNPs</sub>, this intermediate sublineage did not expand in the manner seen for M1<sub>UK</sub> in England, and was not detected at all in a 2020 systematic evaluation of >300 invasive *emm1* isolates from England [5]. This suggests that the fitness of M1<sub>UK</sub> has required the additional acquisition of four further SNPs. These include three non-synonymous SNPs in phosphate transport ATP binding protein, *pstB*; a PTS galactose-specific IIB component gene; a hypothetical protein; as well as the intergenic SNP upstream to *glpF2*. The amount of SpeA produced by M1<sub>UK</sub> strains remains an order of magnitude lower than the amount produced by the historic *emm1* strain NCTC8198 that was

used for erythrogenic toxin production, and can produce 2000 ng ml<sup>-1</sup> [44]. Despite this, the new M1<sub>UK</sub> lineage has outcompeted M1<sub>23SNPs</sub> and has replaced older strains, suggesting that the added fitness of M1<sub>UK</sub> may lie beyond the ability to make SpeA.

#### Funding information

This work was supported by the UK Medical Research Council (grant number MR/P022669/1) and the NIHR Imperial Biomedical Research Centre. H.K.L. is a UKRI-MRC CMBI Clinical Research Training Fellow, C.E.T. is a Royal Society and Wellcome Trust Sir Henry Dale Research Fellow (208765/Z/17/Z), and E.J. is a Rosetrees/Stoneygate Imperial College Research Fellow (M683).

#### Acknowledgements

The authors acknowledge support from the National Institute for Health Research (NIHR) Health Protection Research Unit (HPRU) in Healthcare Associated Infections and Antimicrobial Resistance and the NIHR Imperial Biomedical Research Centre. The authors gratefully acknowledge the support of colleagues in the UKRI-MRC LMS and National Phenome Centre in facilitating sequencing and proteomics, and colleagues in the UKHSA Reference laboratory.

#### Conflicts of interest

The authors declare that there are no conflicts of interest.

#### References

- Li HK, Zhi X, Vieira A, Whitwell HJ, Schrickler A, et al. Characterisation of emergent toxigenic M1<sub>UK</sub> *Streptococcus pyogenes* and associated sublineages. *Microbiology Society. Figure*. 2023. <https://doi.org/10.6084/m9.figshare.22138172.v1>
- Nasser W, Beres SB, Olsen RJ, Dean MA, Rice KA, et al. Evolutionary pathway to increased virulence and epidemic group A *Streptococcus* disease derived from 3,615 genome sequences. *Proc Natl Acad Sci U S A* 2014;111:E1768–76.
- Sumby P, Porcella SF, Madrigal AG, Barbian KD, Virtaneva K, et al. Evolutionary origin and emergence of A highly successful clone of serotype M1 group A *Streptococcus* involved multiple horizontal gene transfer events. *J Infect Dis* 2005;192:771–782.
- Lynskey NN, Jauneikaite E, Li HK, Zhi X, Turner CE, et al. Emergence of dominant toxigenic M1T1 *Streptococcus pyogenes* clone during increased scarlet fever activity in England: a population-based molecular epidemiological study. *Lancet Infect Dis* 2019;19:1209–1218.
- Zhi X, Li HK, Li H, Loboda Z, Charles S. Emerging Invasive Group A *Streptococcus* M1UK Lineage Detected by Allele-Specific PCR, 2020. *Emerg Infect Dis* 2023.
- Rümke LW, de Gier B, Vestjens SMT, van der Ende A, van Sorge NM, et al. Dominance of M1UK clade among Dutch M1 *Streptococcus pyogenes*. *Lancet Infect Dis* 2020;20:539–540.
- Demczuk W, Martin I, Domingo FR, MacDonald D, Mulvey MR. Identification of *Streptococcus pyogenes* M1UK clone in Canada. *Lancet Infect Dis* 2019;19:1284–1285.
- Li Y, Nanduri SA, Van Beneden CA, Beall BW. M1<sub>UK</sub> lineage in invasive group A *Streptococcus* isolates from the USA. *Lancet Infect Dis* 2020;20:538–539.
- Conesa A, Madrigal P, Tarazona S, Gomez-Cabrero D, Cervera A, et al. A survey of best practices for RNA-seq data analysis. *Genome Biol* 2016;17:13.
- Bolger AM, Lohse M, Usadel B. Trimmomatic: a flexible trimmer for Illumina sequence data. *Bioinformatics* 2014;30:2114–2120.
- Clausen PTLC, Aarestrup FM, Lund O. Rapid and precise alignment of raw reads against redundant databases with KMA. *BMC Bioinformatics* 2018;19:1–8.
- Danecek P, Auton A, Abecasis G, Albers CA, Banks E, et al. The variant call format and VCFtools. *Bioinformatics* 2011;27:2156–2158.
- Robinson JT, Thorvaldsdóttir H, Winckler W, Guttman M, Lander ES, et al. Integrative genomics viewer. *Nat Biotechnol* 2011;29:24–26.
- Anders S, Pyl PT, Huber W. HTSeq—a Python framework to work with high-throughput sequencing data. *Bioinformatics* 2015;31:166–169.
- Love M, Anders S, Huber W. Differential analysis of count data—the *deseq2* package. *Genome Biol* 2014;15:10–1186.
- Robinson MD, McCarthy DJ, Smyth GK. edgeR: a Bioconductor package for differential expression analysis of digital gene expression data. *Bioinformatics* 2010;26:139–140.
- Arndt D, Grant JR, Marcu A, Sajed T, Pon A, et al. PHASTER: a better, faster version of the PHAST phage search tool. *Nucleic Acids Res* 2016;44:W16–21.
- Lin EC, Magasanik B. The activation of glycerol dehydrogenase from *Aerobacter aerogenes* by monovalent cations. *J Biol Chem* 1960;235:1820–1823.
- Kapatai G, Coelho J, Platt S, Chalker VJ. Whole genome sequencing of group A *Streptococcus*: development and evaluation of an automated pipeline for emm gene typing. *PeerJ* 2017;5:e3226.
- Turner CE, Holden MTG, Blane B, Horner C, Peacock SJ, et al. The emergence of successful *Streptococcus pyogenes* lineages through convergent pathways of capsule loss and recombination directing high toxin expression. *mBio* 2019;10:e02521–19.
- Sharma H, Ong MR, Ready D, Coelho J, Groves N, et al. Real-time whole genome sequencing to control a *Streptococcus pyogenes* outbreak at a national orthopaedic hospital. *J Hosp Infect* 2019;103:21–26.
- Croucher NJ, Page AJ, Delaney AJ, Keane JA, et al. Rapid phylogenetic analysis of large samples of recombinant bacterial whole genome sequences using Gubbins. *Nucleic Acids Res* 2015;43:e15.
- Price MN, Dehal PS, Arkin AP. FastTree: computing large minimum evolution trees with profiles instead of a distance matrix. *Mol Biol Evol* 2009;26:1641–1650.
- Figshare Item comprising supplementary data items; (n.d.) <https://doi.org/10.6084/m9.figshare.22138172.v1>
- Bienert GP, Desguin B, Chaumont F, Hols P. Channel-mediated lactic acid transport: a novel function for aquaglyceroporins in bacteria. *Biochem J* 2013;454:559–570.
- Sundar GS, Islam E, Braza RD, Silver AB, Le Breton Y, et al. Route of glucose uptake in the group A *Streptococcus* impacts SLS-mediated hemolysis and survival in human blood. *Front Cell Infect Microbiol* 2018;8:71.
- Sumby P, Whitney AR, Graviss EA, DeLeo FR, Musser JM. Genome-wide analysis of group A streptococci reveals a mutation that modulates global phenotype and disease specificity. *PLoS Pathog* 2006;2:e5.
- Rosinski-Chupin I, Sauvage E, Fouet A, Poyart C, Glaser P. Conserved and specific features of *Streptococcus pyogenes* and *Streptococcus agalactiae* transcriptional landscapes. *BMC Genomics* 2019;20:236.
- Pancholi V, Caparon M. M. *Streptococcus pyogenes* metabolism. In: Ferretti JJ, Stevens DL and Fischetti VA (eds). *Streptococcus Pyogenes: Basic Biology to Clinical Manifestations [Internet]*. Oklahoma City (OK): University of Oklahoma Health Sciences Center; 2016. <https://www.ncbi.nlm.nih.gov/books/NBK333417/>

30. Wu ZY, Campeau A, Liu CH, Gonzalez DJ, Yamaguchi M, et al. Unique virulence role of post-translocational chaperone PrsA in shaping *Streptococcus pyogenes* secretome. *Virulence* 2021;12:2633–2647.
31. Nelson GE, Pondo T, Toews KA, Farley MM, Lindegren ML, et al. Epidemiology of invasive group A *Streptococcal* infections in the United States, 2005–2012. *Clin Infect Dis* 2016;63:478–486.
32. UK Health Security Agency Group A Streptococcal infections: second update on seasonal activity in England 2022; (n.d.). [www.gov.uk/government/publications/group-a-streptococcal-infections-activity-during-the-2022-to-2023-season/group-a-streptococcal-infections-second-update-on-seasonal-activity-in-england-2022-to-2023](https://www.gov.uk/government/publications/group-a-streptococcal-infections-activity-during-the-2022-to-2023-season/group-a-streptococcal-infections-second-update-on-seasonal-activity-in-england-2022-to-2023) [accessed 16 December 2022].
33. Sundar GS, Islam E, Gera K, Le Breton Y, Mclver KS. A PTS EII mutant library in group A *Streptococcus* identifies A promiscuous man-family PTS transporter influencing SLS-mediated hemolysis. *Mol Microbiol* 2017;103:518–533.
34. Subedi KP, Kim I, Kim J, Min B, Park C. Role of GldA in dihydroxyacetone and methylglyoxal metabolism of *Escherichia coli* K12. *FEMS Microbiol Lett* 2008;279:180–187.
35. Rom JS, Hart MT, Mclver KS. PRD-Containing Virulence Regulators (PCVRs) in pathogenic bacteria. *Front Cell Infect Microbiol* 2021;11:772874.
36. Doi Y, Ikegami Y. Pyruvate formate-lyase is essential for fumarate-independent anaerobic glycerol utilization in the *Enterococcus faecalis* strain W11. *J Bacteriol* 2014;196:2472–2480.
37. van der Meulen SB, de Jong A, Kok J. Early transcriptome response of *Lactococcus lactis* to environmental stresses reveals differentially expressed small regulatory RNAs and tRNAs. *Front Microbiol* 2017;8:1704.
38. Davies FJ, Olme C, Lynskey NN, Turner CE, Sriskandan S. *Streptococcal* superantigen-induced expansion of human tonsil T cells leads to altered T follicular helper cell phenotype, B cell death and reduced immunoglobulin release. *Clin Exp Immunol* 2019;197:83–94.
39. Dan JM, Havenar-Daughton C, Kendric K, Al-Kolla R, Kaushik K, et al. Recurrent group A *Streptococcus tonsillitis* is an immunosusceptibility disease involving antibody deficiency and aberrant T<sub>FH</sub> cells. *Sci Transl Med* 2019;11:eaau3776.
40. Kasper KJ, Zeppa JJ, Wakabayashi AT, Xu SX, Mazzuca DM, et al. Bacterial superantigens promote acute nasopharyngeal infection by *Streptococcus pyogenes* in a human MHC Class II-dependent manner. *PLoS Pathog* 2014;10:e1004155.
41. Cordery R, Purba AK, Begum L, Mills E, Mosavie M, et al. Frequency of transmission, asymptomatic shedding, and airborne spread of *Streptococcus pyogenes* in schoolchildren exposed to scarlet fever: a prospective, longitudinal, multicohort, molecular epidemiological, contact-tracing study in England, UK. *Lancet Microbe* 2022;3:e366–e375.
42. Alam FM, Turner CE, Smith K, Wiles S, Sriskandan S. Inactivation of the CovR/S virulence regulator impairs infection in an improved murine model of *Streptococcus pyogenes* naso-pharyngeal infection. *PLoS One* 2013;8:e61655.
43. World Health Organization. Increase in invasive Group A streptococcal infections among children in Europe, including fatalities; (n.d.). [www.who.int/europe/news/item/12-12-2022-increase-in-invasive-group-a-streptococcal-infections-among-children-in-europe--including-fatalities#:~:text=The%20observed%20increases%20reported%20to,during%20the%20COVID%2D19%20pandemic](https://www.who.int/europe/news/item/12-12-2022-increase-in-invasive-group-a-streptococcal-infections-among-children-in-europe--including-fatalities#:~:text=The%20observed%20increases%20reported%20to,during%20the%20COVID%2D19%20pandemic) [accessed 14 December 2022].
44. Sriskandan S, Moyes D, Buttery LK, Krausz T, Evans TJ, et al. *Streptococcal pyrogenic* exotoxin A release, distribution, and role in a murine model of fasciitis and multiorgan failure due to *Streptococcus pyogenes*. *J Infect Dis* 1996;173:1399–1407.

### Five reasons to publish your next article with a Microbiology Society journal

1. When you submit to our journals, you are supporting Society activities for your community.
2. Experience a fair, transparent process and critical, constructive review.
3. If you are at a Publish and Read institution, you'll enjoy the benefits of Open Access across our journal portfolio.
4. Author feedback says our Editors are 'thorough and fair' and 'patient and caring'.
5. Increase your reach and impact and share your research more widely.

Find out more and submit your article at [microbiologyresearch.org](https://microbiologyresearch.org).