

Observations and dynamical implications of active normal faulting in South Peru

Sam Wimpenny¹,¹ Carlos Benavente,² Alex Copley,¹ Briant Garcia,² Lorena Rosell,² Aisling O’Kane¹ and Enoch Aguirre²

¹COMET, Bullard Laboratories, Department of Earth Sciences, University of Cambridge, Cambridge CB2 3EQ, UK. E-mail: sew57@cam.ac.uk

²Instituto Geológico, Minero y Metalúrgico INGEMMET, Lima, Perú

Accepted 2020 March 19. Received 2020 March 19; in original form 2019 August 29

SUMMARY

Orogenic plateaus can exist in a delicate balance in which the buoyancy forces due to gravity acting on the high topography and thick crust of the plateau interior are balanced by the compressional forces acting across their forelands. Any shortening or extension within a plateau can indicate a perturbation to this force balance. In this study, we present new observations of the kinematics, morphology and slip rates of active normal faults in the South Peruvian Altiplano obtained from field studies, high-resolution DEMs, Quaternary dating and remote sensing. We then investigate the implications of this faulting for the forces acting on the Andes. We find that the mountains are extending \sim NNE–SSW to \sim NE–SW along a normal fault system that cuts obliquely across the Altiplano plateau, which in many places reactivates Miocene-age reverse faults. Radiocarbon dating of offset late Quaternary moraines and alluvial fan surfaces indicates horizontal extension rates across the fault system of between 1 and 4 mm yr⁻¹—equivalent to an extensional strain rate in the range of $0.5\text{--}2 \times 10^{-8}$ yr⁻¹ averaged across the plateau. We suggest the rate and pattern of extension implies there has been a change in the forces exerted between the foreland and the Andes mountains. A reduction in the average shear stresses on the sub-Andean foreland detachment of $\lesssim 4$ MPa (20–25 per cent of the total force) can account for the rate of extension. These results show that, within a mountain belt, the pattern of faulting is sensitive to small spatial and temporal variations in the strength of faults along their margins.

Key words: Geomorphology; Seismicity and tectonics; Dynamics and mechanics of faulting; Neotectonics.

1 INTRODUCTION

Mountain belts with low-relief, high-elevation interiors, such as the Bolivian Altiplano and central Tibet, are typically dominated by strike-slip faulting in their highest parts with little dip-slip faulting, suggesting that the crust within these ranges is neither thickening nor thinning. In contrast, the lowlands bounding their edges undergo significant shortening and crustal thickening, expressed by thrust and reverse-mechanism earthquakes (Suarez *et al.* 1983; Molnar & Lyon-Caen 1988). This pattern of deformation implies that the horizontal forces due to gravity acting on the crustal thickness contrasts between these plateaus and their bounding lowlands are balanced by the compressional forces acting across their lowlands (Dalmayrac & Molnar 1981; Molnar & Lyon-Caen 1988). A powerful corollary of this argument is that, in order to start deforming a plateau interior by dip-slip faulting, or to change the style of faulting, the forces acting on the mountain belt, the material properties of the lithosphere, or

the geometry of the deforming region must also change (England *et al.* 1988; England & Houseman 1989).

In the Altiplano of south Peru there is geological and geomorphological evidence that the style of faulting has recently changed. Within the high plateau the active faulting is predominantly extensional along NW–SE striking normal faults that cut obliquely across the mountain belt (Sébrier *et al.* 1985; Mercier *et al.* 1992; Benavente *et al.* 2013, Fig. 1). The onset of this extension is thought to be at $\sim 5\text{--}9$ Ma (Cabrera *et al.* 1991; Kar *et al.* 2016), by which time the mountain belt had reached a similar elevation to the present day (Garzzone *et al.* 2017). Until $\sim 6\text{--}15$ Ma, 1–4-km-thick accumulations of growth strata were forming in the footwalls of major reverse faults within the Altiplano that trend subparallel to the active normal faults (Carlotto 2013; Perez & Horton 2014; Horton *et al.* 2015). Therefore, the balance of forces in south Peru may have recently changed to account for the switch from reverse faulting to normal faulting in the high plateau (Sébrier *et al.* 1985; England & Houseman 1989).

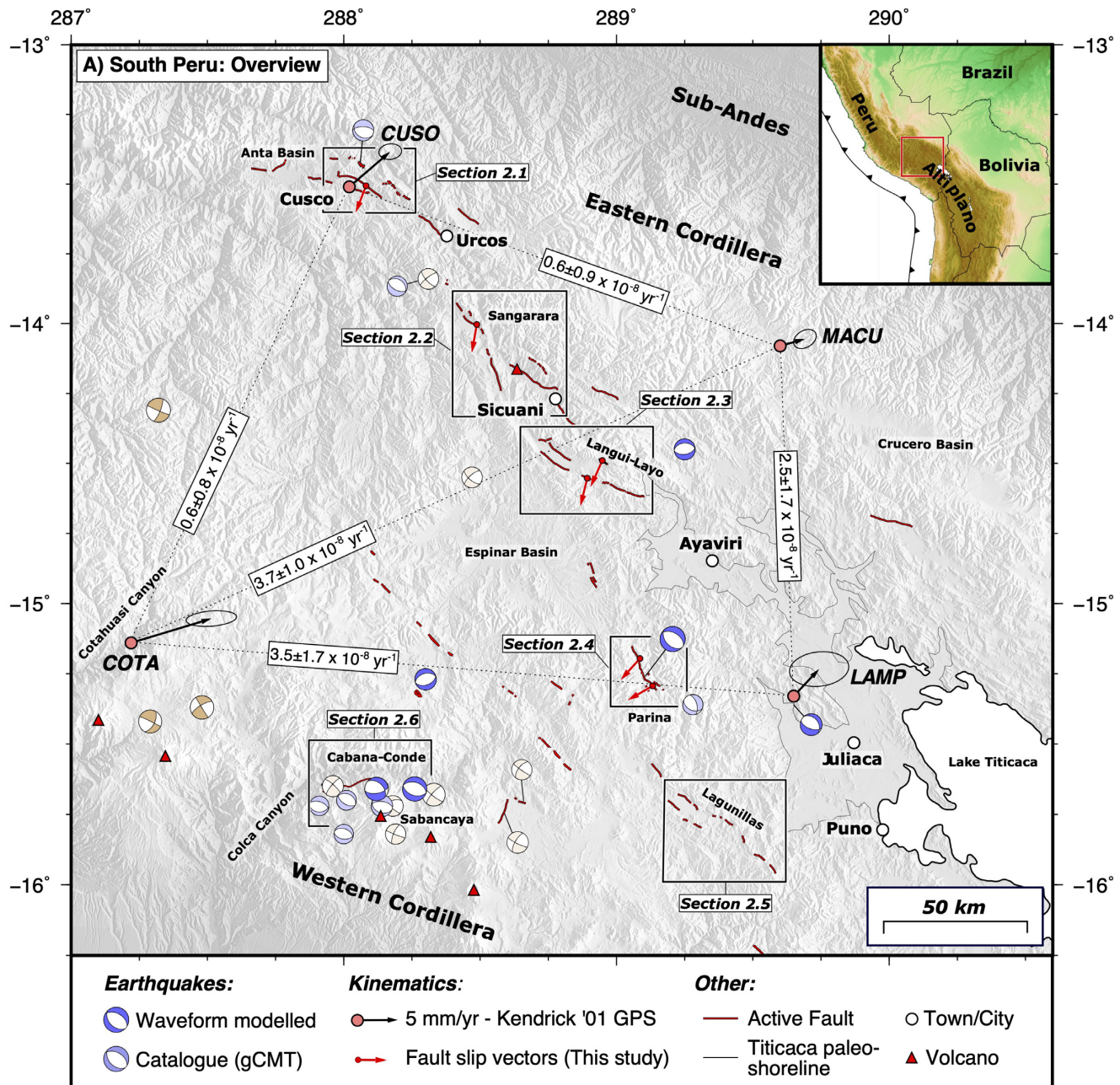


Figure 1. Mapped active faults in south Peru. Faults traces were mapped using the field and satellite remote-sensing observations from this study, as well as the mapping of Benavente *et al.* (2013) and Mercier *et al.* (1992). Boxes refer to the regions discussed in Section 2. Waveform-modelled earthquakes with centroid depths <50 km (i.e. those in the overriding lithosphere and not in the slab) are taken from Suarez *et al.* (1983), Devlin *et al.* (2012), Wimpenny *et al.* (2018) and references therein. Catalogue earthquakes have $M_w > 5$ and were retrieved from the global CMT in March 2019 (Dziewonski *et al.* 1981; Ekström *et al.* 2012). GPS velocities were collected between 1993 and 2000 by Kendrick *et al.* (2001) and are shown relative to stable South America with 1σ (68 per cent) uncertainty ellipses. Strain rates between the GPS stations are shown in the grey boxes with 1σ uncertainties, using the convention that positive values represent shortening.

Some insights into why the force balance may have changed can be gained from studying the active faulting across the whole Andes. First, recent normal faulting occurs mainly in areas with average elevations higher than ~3500–4000 m (Dalmayrac & Molnar 1981; Sébrier *et al.* 1985; Schoenbohm & Strecker 2009). Normal faults have also been observed in the Western Cordillera and forearc (Sébrier *et al.* 1985; Mercier *et al.* 1992; Audin *et al.* 2006). However, these faults are thought to reflect permanent deformation in response to the megathrust earthquake cycle (Saillard *et al.* 2017),

not orogen-wide changes in the force balance persistent over millions of years. Secondly, the extending regions in the high mountains correlate along-strike with areas of low-angle detachment faulting in the fold-thrust belt that bounds the eastern edge of the Andes, known as the sub-Andes (Wimpenny *et al.* 2018). Finally, the suggested timing for the onset of extension in the Andes correlates with a change in the location and rate of shortening in the sub-Andes at ~5–9 Ma (e.g. Gubbels *et al.* 1993; Perez *et al.* 2016a). These observations suggest that slip on weak detachment faults in the

sub-Andes may have perturbed the force balance in the mountains, leading to extension in the highest part of the Altiplano (Wimpenny *et al.* 2018).

In this study, we present new observations of the kinematics, morphology and, for the first time, slip rates of active normal faults in the Altiplano of south Peru, between Cusco and Lake Titicaca (Fig. 1). We discuss the topography and drainage associated with the faulting, in addition to evidence of recent surface-rupturing earthquakes, geological indicators of the timing and rates of faulting and the kinematics of the most active faults. Following this, we use our observations to constrain a simple physical model relating changes in the strength of the sub-Andean foreland detachment to the faulting style and deformation rate within the plateau interior.

Although the faulting between Cusco and Lake Titicaca throughout the late Quaternary has been extensional, GPS measurements made prior to the 2001 M_w 8.4 Arequipa earthquake captured shortening across the same region (Fig. 1). We therefore also discuss evidence that this transient, elastic compression of the Andes due to strain accumulation on the low-angle thrusts along its margins may modulate the slip history of the normal faults within the plateau.

2 OBSERVATIONS OF ACTIVE NORMAL FAULTING

The high Andes in southern Peru form the northern-most extent of the Altiplano—a 200-km-wide, low-relief plateau with average elevations of around 4000 m (Fig. 1). The earliest investigations of active faulting in the region by Suarez *et al.* (1983) and Sébrier *et al.* (1985) mapped a system of normal faults cutting NW–SE across the plateau between Cusco and Langui-Layo (Fig. 1). Extension across these normal faults was estimated to be ~N–S (Sébrier *et al.* 1985; Cabrera *et al.* 1991; Mercier *et al.* 1992), but there remain no estimates of the slip rates on any of these faults. More recently, Benavente *et al.* (2013) expanded on the fault map of Mercier *et al.* (1992), identifying new structures associated with metre-high scarps cutting glacial deposits that continue further southeast of Langui-Layo, towards Lagunillas (Fig. 1). The aim of this section is to use Quaternary dating of these recent scarps, in conjunction with high-resolution Digital Elevation Models (DEMs), updated mapping from optical satellite imagery and new field observations, to estimate the slip rates and recent slip vectors on the normal faults to characterize the kinematics and rate of deformation in the Altiplano plateau.

An important recent development that aides estimating the fault slip rates is the proliferation of moraine age estimates from cosmogenic radionuclide dating in the study region (Smith *et al.* 2005; Rodbell *et al.* 2009; Jomelli *et al.* 2014; Ward *et al.* 2015; D'Arcy *et al.* 2019). Ice covered a large fraction of the Altiplano in the last major glacial, depositing moraines and drift sheets. Boulders on the surfaces of these moraines are typically dated to have been deposited between ~10 and 45 ka (Fig. S1), which roughly correlates with the end of the global Last Glacial Maximum (LGM, Clark *et al.* 2009). Therefore, where scarps cut the youngest sets of fresh-looking moraines at elevations >3500 m, it is likely the scarp formed sometime since the LGM. However, we treat these estimates with caution, and use radiocarbon dating where possible to place more precise bounds on the scarp ages.

A number of studies have used offset Holocene and late Quaternary geomorphic features such as moraines, fan surfaces and river channels to estimate time-averaged fault slip rates and regional patterns of long-term strain. Often implicit in this methodology is that

the amount of slip on a fault in the last ~10–100 ka reflects the average slip rate on the fault over many earthquake cycles. Support for this approach comes from the observation that in well-mapped areas of the continents, late Quaternary fault slip rates can account for the contemporary deformation measured by GPS (e.g. England & Molnar 1997b; Thompson *et al.* 2002; Walker & Jackson 2004). However, there is evidence that slip rates inferred from offset landforms younger than ~20 ka can differ by orders of magnitude from the slip rates measured over ~100–500 kyr (Mouslopoulou *et al.* 2009). Given that the offset landforms we study formed between ~10 and 45 ka, we assume that the inferred fault slip rates are representative of the longer-term rate of fault motion. We then use the fault slip rates to study the forces controlling the long-term deformation of the continental lithosphere (e.g. England & Molnar 1997a). If the long-term slip rates are faster or slower than our late Quaternary slip rates, then our estimates of how the forces acting on the Andes have changed since the late Miocene will be under- or overestimates, respectively.

Throughout this study we determine the possible range in fault slip rates, and the corresponding horizontal extension rates, by taking the appropriate combinations of the upper and lower bounds on landform age, landform offset and fault geometry. By far the largest source of uncertainty in our slip rate estimates derives from the landform age, which is equivalent to a factor of ~4, whilst the landform offset and fault geometry are typically known to within ± 1 m and $\pm 5^\circ$, respectively. Where possible we collect slip vector measurements and landform offsets from the centre of the fault trace to limit the effects of slip vector rotation and tapering slip rates near the fault tips (Roberts 1996). Another source of uncertainty on the fault slip rate includes the effect of gravity-driven slumping or soil compaction in the hangingwall, which may accentuate the measured fault throw (e.g. Di Naccio *et al.* 2019). In this study, only the Tambomachay Fault reaches the surface on a steep (i.e. >10°) slope, whilst all other scarps occur on shallowly dipping surfaces (<10°) at the base of the fault footwall, where the effects of slope instability are negligible (Di Naccio *et al.* 2019). In this setting the scarp heights are probably reflective of cumulative fault slip and not slope instability.

In the following sections we discuss observations from the active faults between Cusco and Lagunillas, traversing from the north-western end of the fault system near Cusco to the southeastern end at Lagunillas (Fig. 1).

2.1 Faults around the Cusco Basin

The Cusco Basin is an E–W trending intramontane basin filled with Pliocene and Quaternary clastic sediments situated near the northern margin of the Peruvian Altiplano (Cabrera *et al.* 1991) (Figs 1 and 2). Subsidence within the basin is controlled by normal faults along its northern edge, including the Qoricocha, Pachatusan, Tambomachay and Cusco Faults (Fig. 2) (Sébrier *et al.* 1985; Cabrera *et al.* 1991). One or more of these faults is likely to have generated the earthquakes that heavily damaged Cusco in 1650 and 1950, in addition to a series of minor shocks recorded in the historical catalogue (Erickson *et al.* 1954; Silgado 1978).

2.1.1 Qoricocha Fault

The Qoricocha Fault reaches the surface within the mountains north of the Cusco Basin as a series of WNW–ESE trending, south-facing scarps, up to 6 m high, that cut glacial drift on a low-relief plateau at

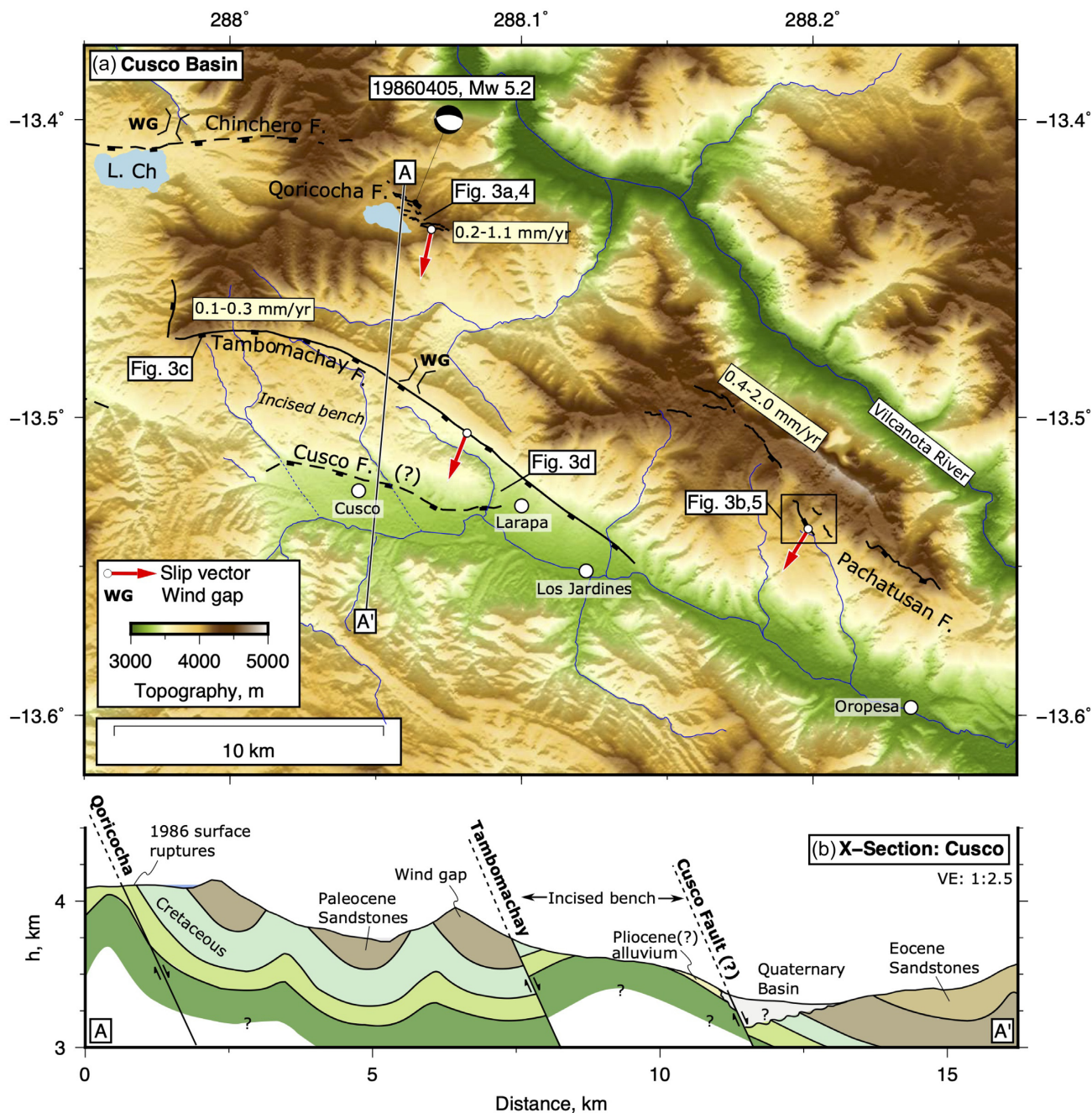


Figure 2. Morphology and active faults of the Cusco Basin. (a) SRTM 30 m DEM of the Cusco region with active faults and slip vectors marked. The fault map is updated from those of Cabrera *et al.* (1991) and Mercier *et al.* (1992). Solid lines are observed faults, dashed lines are inferred faults and blue lines mark rivers. Estimates of the fault extension rates are shown in light yellow boxes (see text for discussion). The mechanism for the 5th April 1986 earthquake is taken from the gCMT catalogue. (b) Cross section perpendicular to the active normal faults in the west of the Cusco Basin. The subsurface geology is taken from the INGEMMET 1:50 000 Cusco sheet 28-s-IV (Carlotto *et al.* 2010). The exact throw across the Tambomachay Fault is not well known.

4000–4350 m elevation (Cabrera & Sebrier 1998, Figs 2a and 3a). The scarps can be traced for 3 km along-strike in a right-stepping en-echelon pattern, and probably link to the Chincherco Fault 2 km west of Lake Qoricocha (Cabrera *et al.* 1991; Benavente *et al.* 2013, Fig. 2a). Although the recent scarps are prominent, they are not associated with any large-amplitude topography (e.g. footwall escarpments), suggesting the Qoricocha Fault has accommodated little total slip as a normal fault.

A road cut northeast of Lake Qoricocha exposes an oblique slice through the fault near its highest-offset point (Fig. 4). Within the

road cut the fault scarp footwall is formed of subangular cobbles and gravels in a red, sandy matrix that are characteristic of the glacial deposits surrounding Cusco. The same cobble-rich layer is also exposed within the hangingwall beneath a tapered wedge of poorly sorted dark clays, fine sands and subangular cobbles that thickens towards the fault scarp. We interpret the hangingwall deposits as a colluvial wedge of sediment formed by erosion of the uplifted and exposed scarp. A bulk radiocarbon sample from the base of the wedge yielded an age of 8.5–8.7 cal. kyr BP (see Table 1 and Fig. 4), which provides a minimum age for the fault offset. The typical

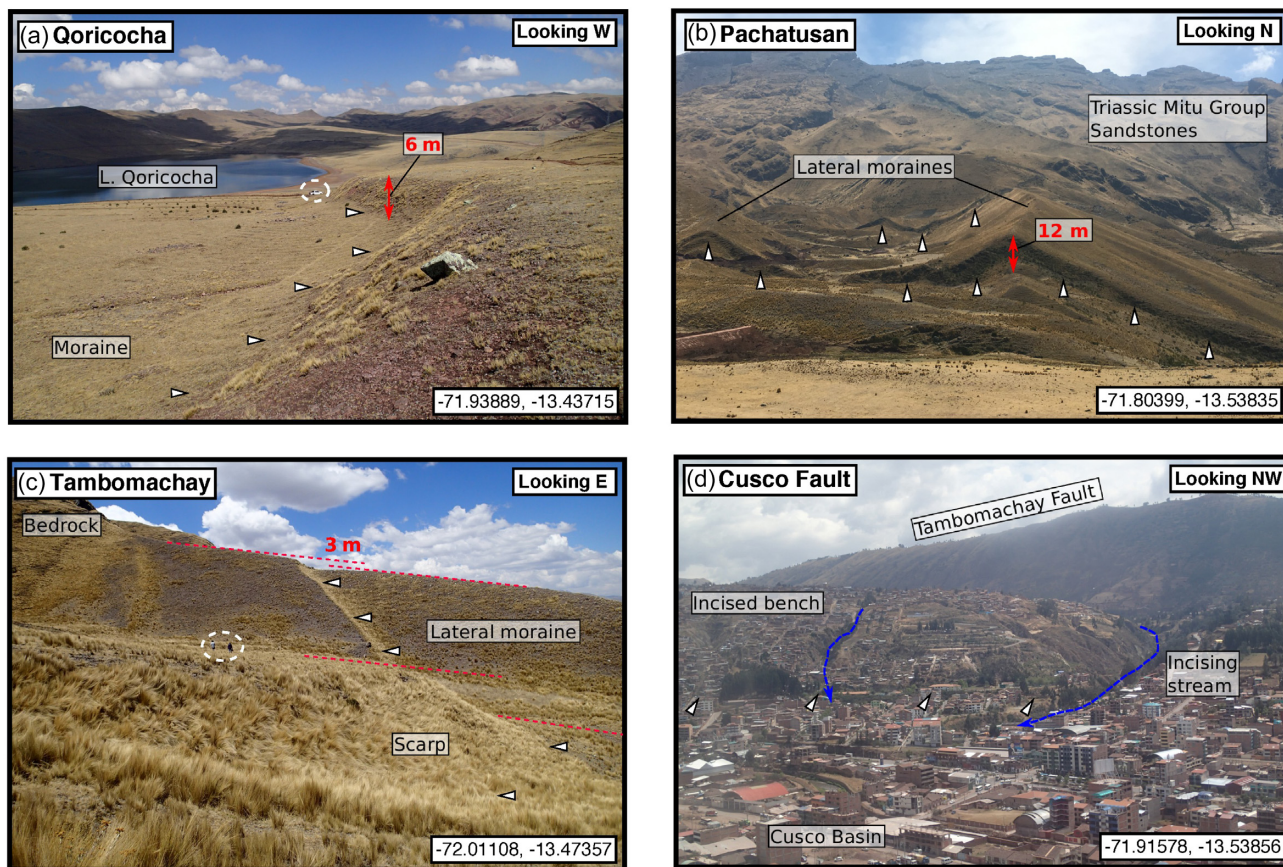


Figure 3. Field photographs of fault scarps around Cusco. White triangles indicate the fault scarps and red dashed lines mark the fault offsets. (a) South-facing scarp of the Qoricocha Fault, with Lake Qoricocha visible in the background. The vehicle highlighted in the background for scale (white dashed circle) is located next to the road cut shown in Fig. 4. (b) Subparallel normal fault scarps cutting lateral moraine crests on the Pachatusan Fault. Scarp offsets are measured from the DEM shown in Fig. 5. (c) South-facing normal-fault scarp of the Tambomachay Fault cutting a lateral moraine crest. People in the foreground for scale (white circle). (d) Uplifted and incised hangingwall of the Tambomachay Fault, with the ridge line of the Tambomachay Fault footwall visible in the background. The Cusco Fault runs along the sharp step in topography visible in the foreground, and is responsible for the incised drainage.

uncertainty associated with bulk radiocarbon dating sediment is on the order of ~ 1 kyr due to inheritance of older or younger material within the bioturbated samples (e.g. Grützner *et al.* 2016), therefore the base of the colluvial wedge is roughly dated to 8–9 ka. An upper bound on the age of scarp can be estimated from assuming the glacial sediments cut by the fault were deposited during the LGM ~ 10 –45 ka.

Given that the surface trace of the Qoricocha Fault is < 10 km long, it most likely ruptures in earthquakes of M_w 6 with less than a few metres of slip (e.g. Wells & Coppersmith 1994). Therefore the 6 m scarp is likely to have been formed in multiple surface-rupturing earthquakes, and the organic sediments at the base of the colluvial wedge will date from the first surface ruptures on the fault following the deposition of the glacial sediments. Taking the scarp age to be 8–45 ka, the throw rate on the Qoricocha Fault is ~ 0.1 – 0.7 mm yr $^{-1}$.

The azimuth of the slip vector on the Qoricocha Fault is constrained to be 201° (NNE–SSW) from slickenline measurements (Mercier *et al.* 1992) and the focal mechanism of a M_w 5.2 earthquake that generated surface ruptures on the fault in 1986 (Cabrera & Sebrier 1998). Using the south-dipping nodal plane of the gCMT mechanism for the 1986 earthquake with strike/dip of 121/32 (Dziewonski *et al.* 1981; Ekström *et al.* 2012), which would be consistent with the sense of slip across the scarps, the horizontal extension rate and total slip rate on the Qoricocha Fault are 0.2–1.1 and 0.2–1.4 mm yr $^{-1}$, respectively.

2.1.2 Pachatusan Fault

The Pachatusan Fault strikes NW–SE in the mountains north-east of Cusco as 13 km of south-facing scarps that bound the contact between Triassic Mitu Group sandstones in its footwall, and a 4 km wide, low-relief bench perched at 4000 m elevation in its hanging-wall formed of Cretaceous sandstones and mudstones draped with lateral moraines (Figs 2 and 3b).

We generated a high-resolution DEM of the Pachatusan scarps where they cut the crests of lateral moraines using low-altitude drone photography and the structure-from-motion technique implemented in Agisoft Photoscan (e.g. Westoby *et al.* 2012). Ground control points measured with differential GPS were used to guide the image matching and point cloud scaling, and we thinned and gridded the point cloud at 1×1 m resolution using splines in tension (Smith & Wessel 1990). The resulting DEM highlights two subparallel scarps (Fig. 5a)—one running along the bedrock-moraine contact (‘northern scarp’) and one offset ~ 500 m to the south (‘southern scarp’). The scarps vertically offset the crests of the lateral moraines by up to 15 m (Fig. 5). Summing the vertical offsets across both the northern and southern scarp yields a cumulative vertical offset of ~ 20 m. For shallowly dipping surfaces ($< 10^\circ$) that are offset by a dip-slip fault with ~ 30 – 60° dip, the vertical offset of the surface determined from profiles across the fault is roughly equivalent to the fault throw to within 15 per cent (Mackenzie & Elliott 2017).

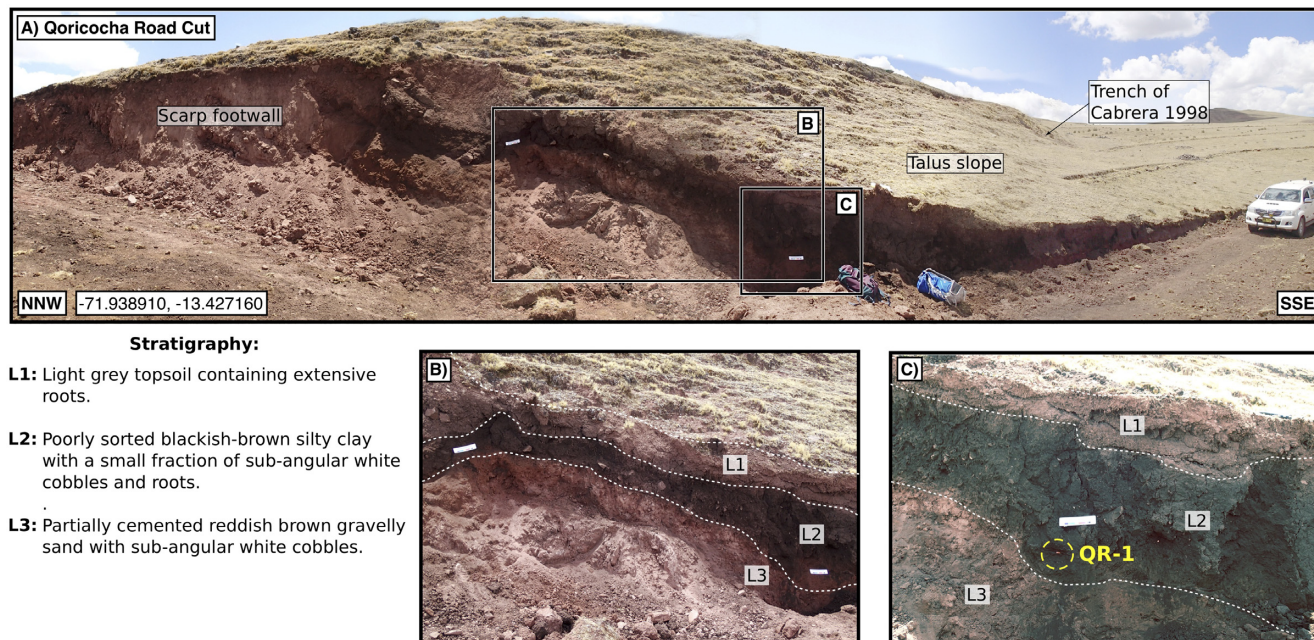


Figure 4. Road cut crossing the Qoricocha Fault scarp. (a) Panoramic photograph of the scarp. The road cut has a strike of 140° , whilst the scarp itself has a strike of 120° , resulting in an oblique section. (b) Transect through the scarp stratigraphy. At the base, Layer L3 is the cemented glacial drift in the scarp footwall. Overlying this is Layer L2, which is interpreted as talus deposits eroded and reworked from the scarp surface. The layer thickens to the right as the exposure cuts into the thickest portion of the colluvial wedge. Where L2 overlies the scarp it contains a larger fraction of white, subangular cobbles, which we interpret as a thin veneer of reworked material overlying the face of the scarp that may have been subject to subaerial weathering. Layer L1 is the topsoil capping the glacial deposits and colluvial wedge material. Sample QR-1 was collected from the base of the thickest part of the colluvial wedge (L2) shown in (c). The scale card is 20 cm long and 5 cm high.

Table 1. Results of bulk radiocarbon dating of samples collected in south Peru performed by Beta Analytic (FL, USA). Calibration is performed using the Southern Hemisphere-specific calibration SHCAL13 (Hogg *et al.* 2013). The influence of Northern Hemisphere-derived carbon on the calibration (see Marsh *et al.* 2018) is probably negligible relative to the uncertainties associated with younger/older carbon inheritance common to bulk sampling. Calibrated ages are given in years before 1950 with formal uncertainties 2σ about the mean, though typical uncertainties are ~ 1 kyr.

Sample	Material	$\delta^{13}C$ (‰ per mill.)	Age (yr BC)	Calibrated age (cal. yr BP)
QR-1	Organic sediment	-25.1	6756–6566	8705–8515
SR-1	Organic sediment	-24.5	5511–5364	7460–7313
SR-2	Organic sediment	-25.4	5470–5304	7419–7253

Therefore the vertical throw across the Pachatusan Fault is probably the range ~ 17 – 20 m. Throughout this study we carefully select profiles to satisfy these constraints.

Horizontal offsets parallel to the fault strike are also evident across some of the moraine crests on the Pachatusan Fault (Fig. 5b). The NW-most moraine crest in Fig. 5(b) is not offset laterally within measurement precision, whilst the SE-most crest is laterally offset by ~ 20 m. To account for this discrepancy in the moraine crest offsets, the horizontal projection of the fault slip vector must be roughly parallel to the northwestern moraine crest, which has an azimuth of $\sim 210^\circ$, and different to the orientation of the southeastern moraine crest (Fig. 5c). Therefore the most recent sense of motion across the Pachatusan Fault is \sim NNE–SSW extension.

The moraines at Pachatusan have not been directly dated. However, their fresh morphology implies the moraines were probably formed at the end of the LGM ~ 10 – 45 ka (Mercier *et al.* 1992). Combining the cumulative fault throw and the estimated LGM age yields a throw rate of ~ 0.4 – 2.0 mm yr $^{-1}$. Given the fault

slip vector azimuth, and assuming a dip of $\sim 45^\circ$ (e.g. Jackson & White 1989), the horizontal extension rate across the fault would be 0.4 – 2.0 mm yr $^{-1}$ and the fault slip rate would be 0.5 – 3.1 mm yr $^{-1}$. Notably, if the glacial deposits at Qoricocha are contemporaneous with the lateral moraines at Pachatusan, then the Pachatusan Fault may have a recent slip rate at least three-to-four times faster than the Qoricocha Fault.

2.1.3 Tambomachay Fault

The footwall of the Tambomachay Fault is marked by a 14-km-long, 200–350-m-high ridge line formed of Paleocene–Eocene sandstones curving around the northern end of the Cusco Basin (Sévrier *et al.* 1985; Cabrera *et al.* 1991) (Fig. 2a). Recent slip on the Tambomachay Fault has formed south-facing normal-fault scarps along the contact between the ridge line and a low-relief hangingwall surface. Despite the normal-sense motion across the recent scarps, the Tambomachay Fault preserves a reverse-sense geological offset (Fig. 2b).

Near the fault's western tip, a scarp vertically offsets the crest of a lateral moraine by 3 m (Mercier *et al.* 1992, Fig. 3c). Bulk radiocarbon dating of organic sediment collected from the colluvial wedge exposed in the scarp hangingwall returned dates between 0.9 and 8.5 cal. kyr BP, with the sample ages increasing towards the base of the wedge (Rossell 2018). The age of the sediment at the base of the hangingwall wedge (8.5 cal. kyr BP) is similar to the sediment dated from the hangingwall of the Qoricocha Fault described above, indicating that moraine deposition ended earlier than ~ 8 – 9 ka (to account for the time taken to form the organic soils) and may have been relatively contiguous throughout the Cusco area. Taking a scarp age of 8–45 ka, as with the Qoricocha scarp, would yield a throw rate of ~ 0.1 – 0.3 mm yr $^{-1}$.

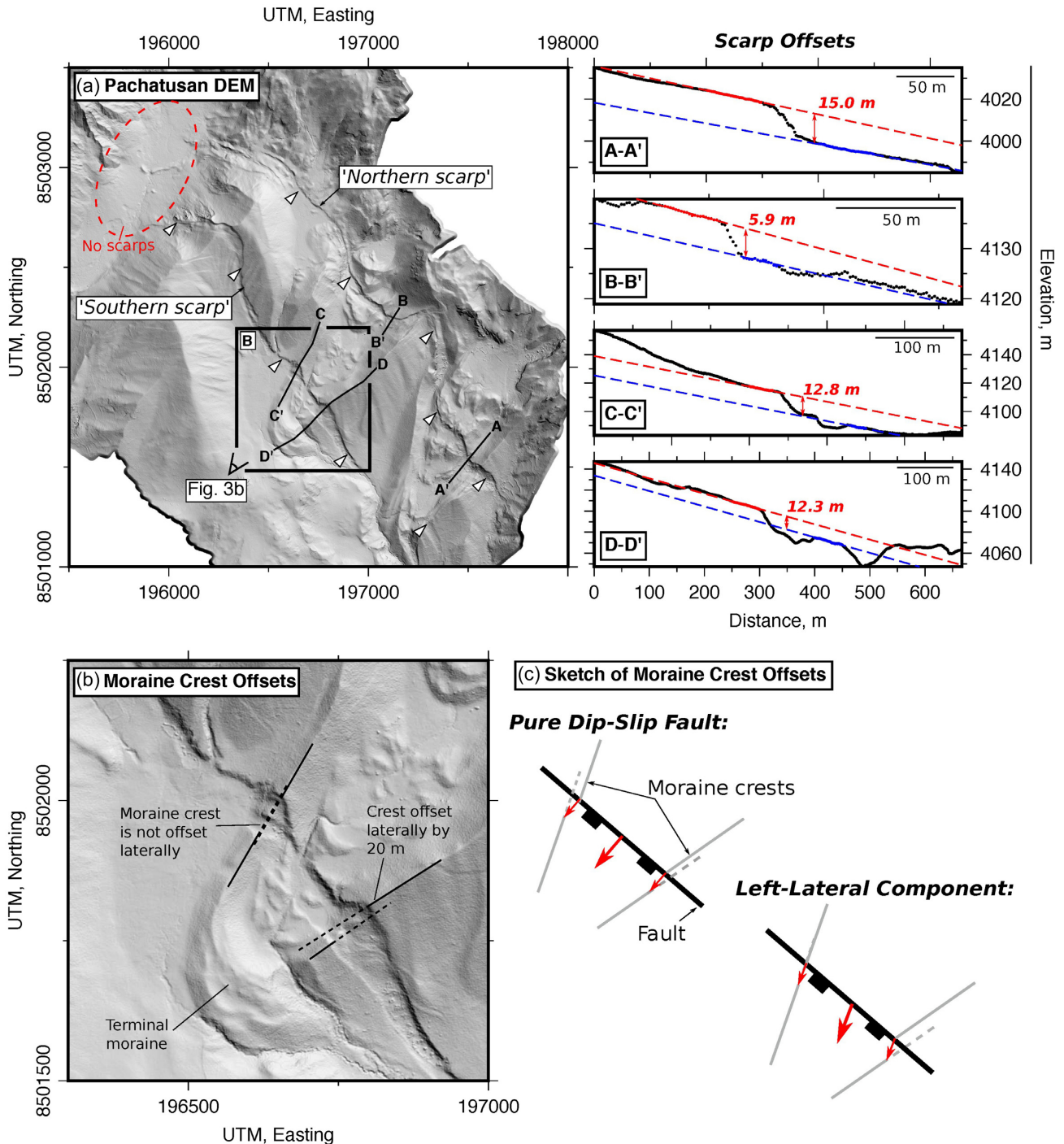


Figure 5. High-resolution DEM of the Pachatusan Fault. (a) Hillshade of the DEM (illuminated from the NE) highlighting the two sets of subparallel scarps cutting lateral moraine deposits. Topographic profiles across the scarps are shown in the adjacent boxes. On the profiles, black dots are the measured elevations (relative elevations are accurate but absolute elevations are not), dashed lines are linear fits to the coloured points above (red) and below (blue) the scarp. The vertical scarp offset was measured as the difference between these two lines at the foot of the scarp. (b) Zoom in on the region in (a) with laterally offset moraines. The moraine crests have been projected by black dashed lines. (c) Sketches of the moraine crest offsets expected for different fault slip vectors.

Along the central section of the fault, we identified a striated bedrock fault plane exposed in building excavations that was mantled by unconsolidated sediments. The azimuth of the slickenlines were between 198° and 205° (similar to Mercier *et al.* 1992), suggesting the most recent sense of slip on the fault is NNE–SSW extension. Given that the fault dips $\sim 45^\circ$ where exposed and the rake of the slickenlines were -90° , the horizontal extension rate

across the Tambomachay Fault is $0.1\text{--}0.3\text{ mm yr}^{-1}$ and the fault slip rate is $0.1\text{--}0.4\text{ mm yr}^{-1}$.

2.1.4 Cusco Fault

The morphology along the northern margin of the Cusco Basin changes significantly from west to east (Fig. 2). In the west, the

basin's northern margin is marked by a sharp step in topography ~3 km south of the Tambomachay Fault. Between this topographic step and the Tambomachay Fault is an incised, low-relief surface that dips gently south, capped by alluvial sediments perched 100–300 m above the Cusco Basin floor (Cabrera *et al.* 1991; Carlotto *et al.* 2010, marked 'incised bench' on Fig. 2a). Plio-Pleistocene alluvial and lacustrine sediments also outcrop on the lower slopes of this topographic step (Cabrera *et al.* 1991). Streams draining off the elevated surface in the hangingwall of the Tambomachay Fault have incised narrow valleys into the alluvial sediments and underlying Cretaceous limestones and sandstones, however stream incision terminates abruptly at the step in topography along the northern margin of the basin.

Near Larapa the step in topography along basin's northern margin and the sharp transition in stream incision jumps northwards by ~1.5 km and becomes coincident with the trace of the Tambomachay Fault (Fig. 2a). Eocene sandstones of the San Jeronimo group outcrop in the fault's footwall, whilst the hangingwall is draped with alluvial fans of presumed Quaternary age that grade gently towards the south into the Cusco Basin floor. There is no evidence for recent erosion of these alluvial fan surfaces. In addition, the Plio-Pleistocene sediments seen in the western portion of the basin do not outcrop in this region.

One possible interpretation of these observations is that an active, south-dipping normal fault is running along the northern margin of the basin between Cusco and Larapa (the Cusco Fault; see Fig. 2a). Recent slip on such a fault can account for the incised alluvial deposits that outcrop on the low-relief surface northwest of Larapa, in addition to the along-strike change in stream incision pattern and the topographic step along the northern margin of the Cusco Basin. However, there is no measurable offset of the Plio-Pleistocene alluvial deposits between the northern and southern margins of the Cusco Basin (Cabrera *et al.* 1991), suggesting that if the Cusco Fault is active, then total throw on the fault over the last ~1–1.5 Myr must be less than ~100 m (i.e. a throw rate $\lesssim 0.1$ mm yr⁻¹).

Alternatively, the step in topography and perched alluvial sediments northwest of Larapa may have been uplifted during a previous shortening phase when the Tambomachay Fault accommodated reverse-sense motion (Mercier *et al.* 1992). In which case, the current pattern of stream incision reflects fluvial erosion down to the Cusco Basin base level through remnant topography in the subsiding hangingwall of the Tambomachay Fault.

None of the observations presented above unambiguously require the presence of the Cusco Fault. Nonetheless, we favour the interpretation that the Cusco Fault is active, as it may account for the along-strike changes in the morphology of the Tambomachay Fault hangingwall. Irrespective of whether the Cusco Fault is active or not, the conclusions of this paper do not rely on this interpretation.

2.1.5 Summary of the Normal Faulting around Cusco

The normal faults around the Cusco Basin are 10–15 km long, strike roughly east–west, dip to the south and are separated by ~5 km across-strike from one-another, forming a 'domino-like' array accommodating extension with an azimuth ~200° (NNE–SSW). The faults within the mountains north of Cusco (Qoricocha and Tambomachay Faults) are associated with metre-high Holocene scarps with an inferred late Quaternary horizontal extension rate of ~0.3–1.4 mm yr⁻¹. East of Cusco, the Pachatusan Fault accommodates ~0.4–2.0 mm yr⁻¹ of horizontal extension on a single fault that reaches the surface within the mountains. The Cusco Fault along

the northern margin of the Cusco Basin has no Holocene scarp. If the Cusco Fault is active, then presumably it accommodates the difference in the horizontal extension rate between the faults to the north, and those to the east, of Cusco, which is equivalent to $\lesssim 0.1$ –1.7 mm yr⁻¹.

2.2 Sangarara and Yanaoca Faults

Southeast of Cusco, between the towns of Sangarara and Yanaoca, lies a NNW–SSE trending, 40-km-long intramontane valley containing a series of perched lake basins (Figs 1 and 6). The eastern side of the valley is bound by an escarpment that has been incised by gorges draining Lakes Pampamarca and Pomacanchi (Fig. 6a). The western side of the valley is formed of lower gradient slopes with gentle river incision and a sinuous bedrock-alluvium contact.

Suarez *et al.* (1983) identified a 3-km-long exposure of the Sangarara Fault north of Lake Pomacanchi separating a southwest dipping fan surface in the hangingwall from a sharp range front marked by ~50-m-high, west-facing triangular facets in the footwall (Fig. 6a). The morphology of the Sangarara Fault is consistent with recent normal-sense motion (Suarez *et al.* 1983; Sébrier *et al.* 1985).

At the head of the gorge draining Lake Pomacanchi, the Sangarara Fault is exposed between andesitic footwall rocks and hangingwall basin conglomerates that include clasts of the footwall andesites (Fig. 7a). The conglomerates have been exposed along the shoreline of Lake Pomacanchi, suggesting the base level within the basin may have recently been lowered by headward erosion through the gorge draining the lake. The exposed fault plane, which has orientation 168/36, preserves faint slickenlines in green precipitate with an azimuth of 190° (Fig. 7b), implying the most recent sense of slip has been NNE–SSW extension with a component of left-lateral shear. Carlotto (2013) suggested that faults in the same area were accommodating shortening and left-lateral shear until ~5–7 Ma to account for the folded Pliocene sediments in the Paruro Basin ~5 km north of Sangarara. Therefore the recent extension at Sangarara is likely to be younger than 5–7 Ma.

Near the northwestern tip of the Sangarara Fault we identified a small section of fan surface perched within the fault footwall, which has been offset relative to the hangingwall fan surface (Fig. 8). Both the footwall and hangingwall sections of the fan have been incised by streams with steep-sided channels, either due to climatic effects or base-level changes caused by downthrow of the outlet gorges (Fig. 6), causing the fan surfaces to be abandoned as drainage is routed to the valley floor. Therefore an estimate of the fan offset and its abandonment age can be used to determine the fault throw rate.

We estimated the timing of fan abandonment by bulk radiocarbon dating a ~40-cm-thick, dark brown, organic-rich soil layer that overlays the fan gravels (inset on Fig. 8). Two samples from the base and middle of the soil layer returned consistent dates of 7.4–7.3 and 7.4–7.2 cal. kyr BP and place a minimum age on the fan (plus a likely ~1 kyr uncertainty from the bulk soil dating approach; Table 1, Fig. 8). Given the Holocene age of the soil, the most probable cause of fan abandonment was incision due to increased stream discharge at the end of the LGM ~10–20 ka (Mercer & Palacios 1977; Seltzer 1990; Smith *et al.* 2005) or the Taucu climatic wet phase ~14–18 ka (e.g. Placzek *et al.* 2013). Fan surfaces are also incised in the fault hangingwall near Yanaoca (Fig. 6b), which supports the proposition of climatically-controlled incision. Following fan abandonment, the

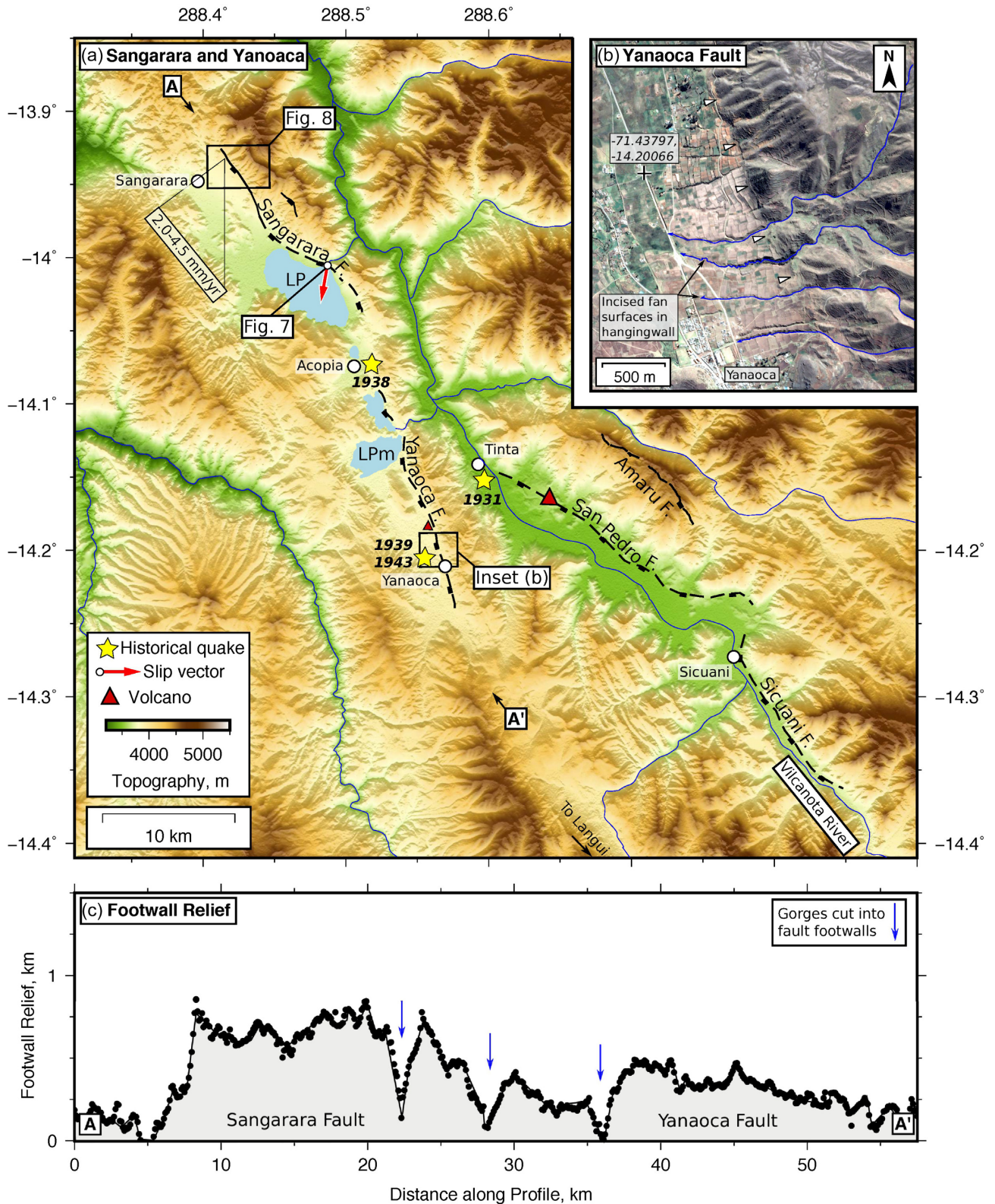


Figure 6. Overview of the active faulting between Sangarara and Yanoaca. (a) SRTM 30 m DEM overlain with active faults. The legend is the same as in Fig. 2. The two lakes are: LP, Lake Pomacanchi; LPm, Lake Pampamarca. (b) Digital Globe imagery from Google Earth of incision across the bedrock-alluvium contact along the Yanoaca Fault. Incision is also present in the hangingwall fan surfaces at Sangarara (see Fig. 8). (c) Footwall relief along the Sangarara-Yanoaca valley.

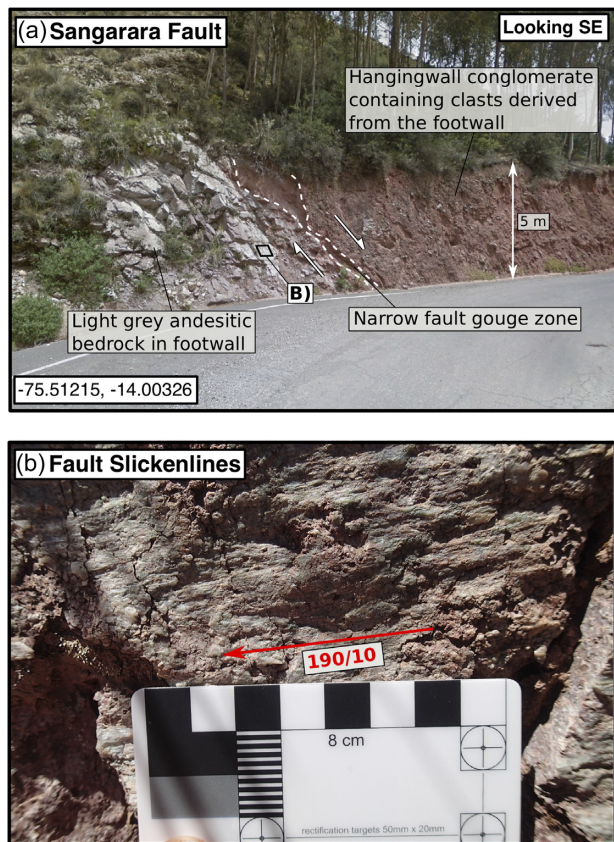


Figure 7. Field photographs of the Sangarara Fault at the head of the gorge draining Lake Pomacanchi. (a) The contact between andesitic footwall bedrock and the hangingwall conglomerates exposed in a road cut. (b) Slickensides in green precipitate on the fault surface. The slickensides have a small plunge at this locality (i.e. mostly strike-slip motion), as this particular exposed section of the Sangarara Fault is within an oblique step over (see Fig. 6a).

40-cm-thick soil layer probably took a few thousand years to develop in the arid Altiplano climate (e.g. Goodman *et al.* 2001).

In order to determine the vertical offset of the fan surface, we generated a DEM from Pleiades bi-stereo panchromatic imagery using the Leica Photogrammetry Suite in Erdas Imagine (e.g. Zhou *et al.* 2015; Talebian *et al.* 2016). The sensor and image geometry were defined using Rational Polynomial Functions, which were refined through a bundle adjustment using 30 automatically selected and manually edited tie points in both images (e.g. Fraser & Hanley 2005). The root-mean-square error between the tie points was typically <0.3 pixels. The resulting point cloud was averaged over 1×1 m pixels and gridded using splines in tension (Smith & Wessel 1990, Fig. 8a).

An elevation profile across the fault indicates the fan surface is vertically offset by 30 m (Fig. 8; profile A–A'). Measurements from a barometric altimeter profile with horizontal location measured with hand-held GPS match those from the Pleiades DEM (Fig. S2). A similar fan surface to the southeast is also offset by 22 m (Fig. 8; profile B–B'). As the dip direction of the fan surface is perpendicular to the fault strike, and the dip angle of the fan surface is shallow ($\sim 10^\circ$), then the vertical offset measured from the profile will be a good proxy for the fault throw (Mackenzie & Elliott 2017).

Given that the minimum age of the fan abandonment is 7.2 ka, and the fan is offset by 30 m, then the throw rate on the Sangarara Fault

must be <4.4 mm yr $^{-1}$. Using the fault dip and slip vector azimuth measured near Lake Pomacanchi, and taking an average fault strike of 145° at the location of the offset fan, the maximum extension rate across the fault would be <6 mm yr $^{-1}$ and the total slip rate would be <10.5 mm yr $^{-1}$. Taking a more realistic fan abandonment age of ~ 10 – 20 ka, which accounts for the time taken for the soils to develop on the fan surface, the Sangarara Fault throw rate would be ~ 1.5 – 3 mm yr $^{-1}$, and the horizontal extension rate and slip rate would be 2.0 – 4.5 and 3.6 – 7.9 mm yr $^{-1}$, respectively.

A longer-term estimate of the throw rate can also be determined from the footwall relief across the Sangarara Fault. Using the typical long-term uplift to subsidence ratio on normal faults of 1:2 to 1:3 (e.g. Armijo *et al.* 1996), the 750 m of footwall relief (Fig. 6c) implies a total normal-sense fault throw of ~ 2250 – 3000 m. Given the estimated timing for the onset of extension being <5 Ma (Carlotto 2013), the Pliocene–Quaternary throw rate must be >0.4 – 0.6 mm yr $^{-1}$, which is consistent with the estimate of the Holocene throw rate. Alternatively, if the Holocene throw rate of 1.5 – 3 mm yr $^{-1}$ were constant through time, and we assume the same uplift-to-subsidence ratio, it would take ~ 1 – 2 Myr to form the footwall relief at Sangarara.

The relief across the Sangarara Fault dies off towards the south-east near Acopia (Fig. 6), marking the southern tip of the 15-km-long fault. However, a series of isolated lake basins are positioned to the south of the Sangarara Fault, indicating that dip-slip faulting continues further along the valley towards Yanoaca (Fig. 6a). Between Lake Pampamarca and Yanoaca a 10-km-long, 2-km-wide basin has been formed by subsidence in the hangingwall of the Yanoaca Fault (Fig. 6c). Exposures of the Yanoaca Fault in bedrock near Yanoaca were heavily altered, potentially due to hydrothermal fluids migrating along the fault plane from the nearby volcanism, therefore the fault preserved no kinematic information.

Despite its subtle morphology, it is likely that the Yanoaca Fault is active. The towns of Pampamarca, Pomacanchi, Yanoaca and Tinta have all experienced severe damage in a cluster of historical earthquakes on the 18th June 1931, 5th March 1938, 23rd June 1938 and the 23rd January 1943, causing at least 100 fatalities in the sparsely populated area (Erickson *et al.* 1954; Silgado 1978).

2.3 Faults around the Langui-Layo Basin

The Langui-Layo Basin is a 4-km-wide, 30-km-long, NW–SE trending depression containing an intramontane lake that sits roughly along-strike to the southeast of the Sangarara and Yanoaca Faults described above (Figs 1 and 9). To date the only documented evidence of active faulting in the region is a series of E–W trending scarps following the bedrock-alluvium contact north of Langui town for ~ 3 km (Sébrier *et al.* 1985, Fig. 10a). These scarps mark a distinct change in the pattern of stream incision, suggesting they have been formed by a recently active, south-dipping normal fault. Nonetheless, the fault responsible for these scarps is unlikely to control the shape of the Langui-Layo Basin, as it trends oblique to the main strike of the lake and is short compared to the size of the basin.

2.3.1 North and South Langui and East Layo Faults

Sébrier *et al.* (1985) suggested a NW–SE trending, SW-dipping normal fault running along the northern–eastern side of the Langui-Layo Basin may be responsible for subsidence of the lake, but did not give any evidence of the faulting. We found evidence of this fault

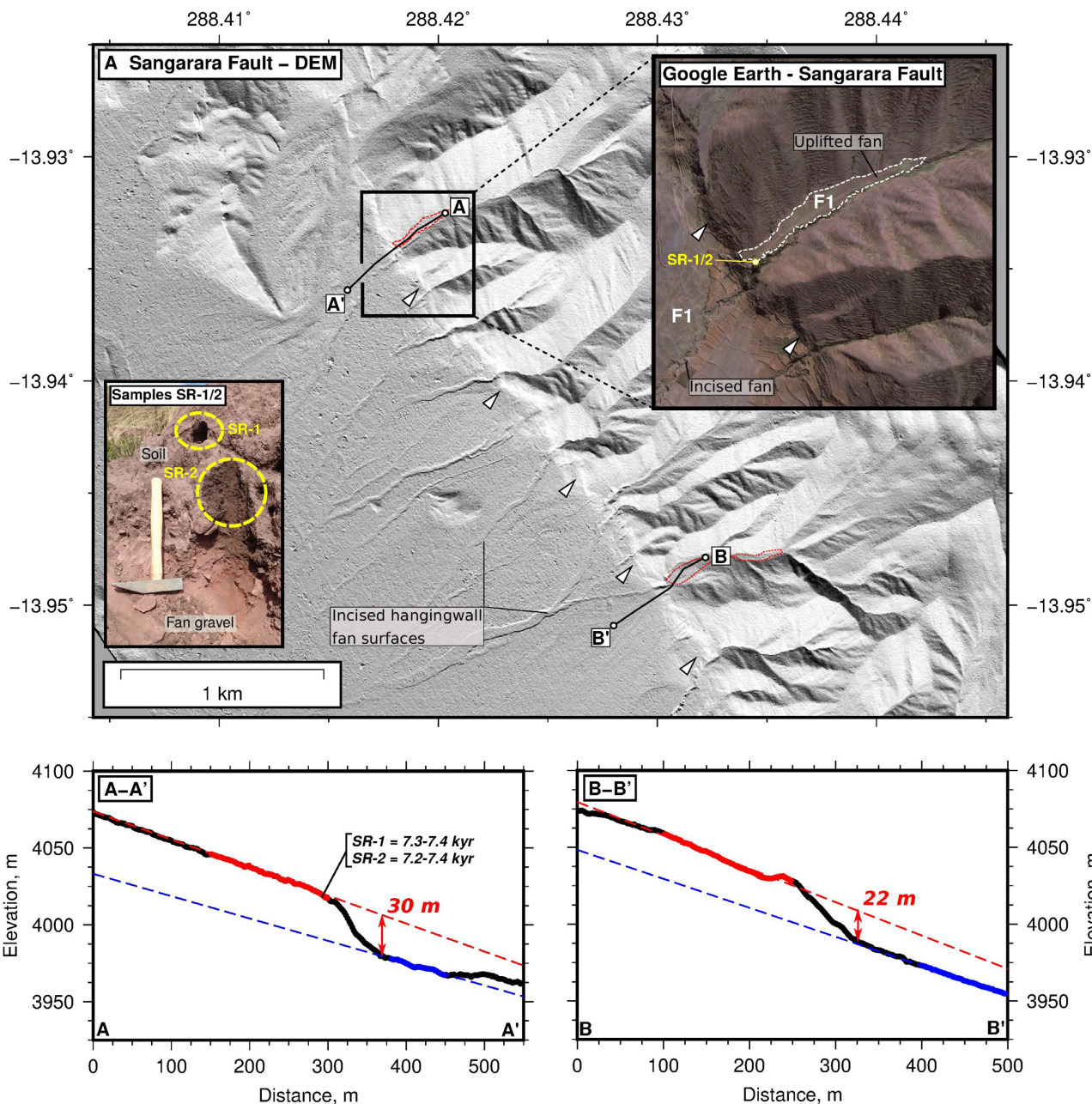


Figure 8. Pleiades satellite DEM, sample locations and profiles used to estimate the slip rate on the Sangarara Fault. (a) Hillshade of the Pleiades DEM gridded at 1 m resolution (see text for the method used to construct the DEM). Inset is a Digital Globe satellite image from Google Earth of the offset fan surface (F1; highlighted in white), with the location of the samples SR-1 and SR-2 also highlighted. Photographs of the soil samples collected from the top of the fan are also shown inset. Topographic profiles between points A–A' and B–B' are shown below. These profiles are along curved traces as they track down-dip on the fan surfaces.

in the mountains northeast of Layo town in the form of a 5-km-long, 20–30 m-high, south-facing bedrock fault plane (Figs 9a and 10b, c; East Layo Fault). Moraine deposits in the downthrown, southern wall of the fault suggest the most recent sense of motion on this fault is normal, and the bedrock fault plane preserves slickenlines with an average azimuth of 204° (Fig. 10b). However, as the fault is perched high above the basin edge, it is unlikely to be dominating the current vertical motions in the Langui-Layo Basin.

Evidence of recently uplifted lacustrine deposits along the northern, southern and eastern shoreline of Lake Langui-Layo, possibly related to active faulting, also suggest that there are faults present

in the region (Fig. 9a). A number of marl layers outcropping tens of metres above the current lake level, each between 3 and 6 m thick, contain well-preserved bivalve and gastropod fauna, often in shelly lag horizons. South of Layo town two subhorizontal layers of the marls are particularly well exposed 50 and 60 m above the current lake level in the incised edge of a river bank (Locality M2 on Fig. 9a; Fig. S3). The stratigraphy, fossils and sedimentary structures in the exposure are typical of a near-shoreface, subaqueous depositional environment. There are two possible explanations for these sediments now being at least 60 m above the lake level: (1) the lake was previously higher or (2) there has been vertical

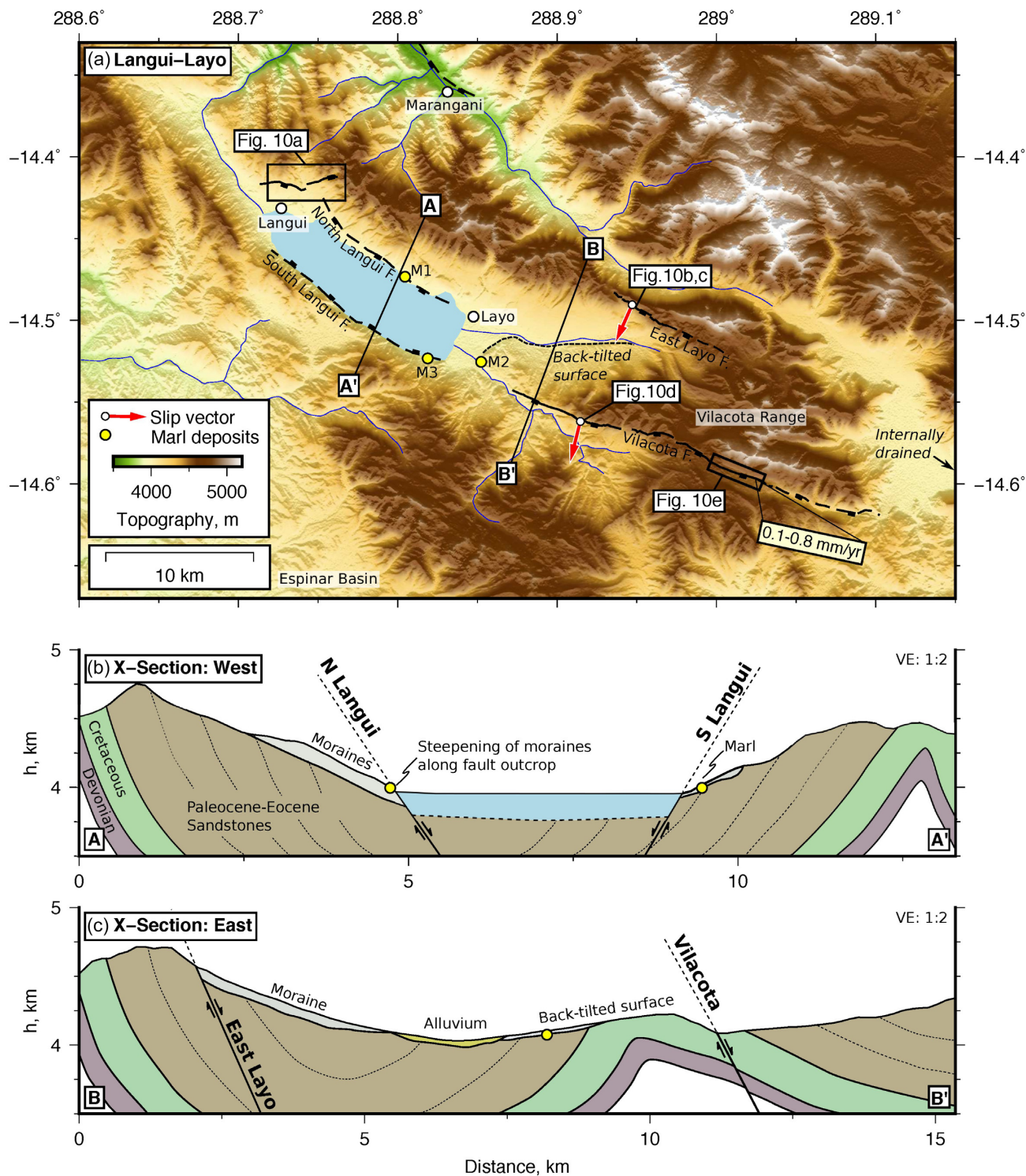


Figure 9. Overview of the active faulting around the Langui-Layo Basin. (a) SRTM 30 m DEM and active fault map. The locations of three exposures of marl layers around the edge of the lake are highlighted with yellow dots. Photographs and satellite imagery are shown in Fig. 10 and a detailed view of the marl deposit at locality M2 is shown in Fig. S3. A high-resolution Pleiades DEM of the Vilacota Fault is shown in Fig. S4. (b, c) Geological and topographic cross-sections through the centre and eastern part of the Langui-Layo Basin. The surface geology is taken from the INGEMMET 1:50 000 Sicuani Sheet 29-t-II (Carlotto & Roque 2009).

motion of these deposits relative to the lake level caused by active faulting.

For the lake to be previously higher than today would require the outflow at the north-western edge of Lake Langui-Layo was at least 50 m higher than present. However, we found no morphological

evidence of an incised sill (e.g. landslide or moraine dams) near current the lake outlet, which flows through a wide U-shaped valley.

Alternatively, there may have been vertical motions caused by faulting that either lowered the outlet or raised the shorelines of the lake relative to its past level. The linearity of the shorelines, and the

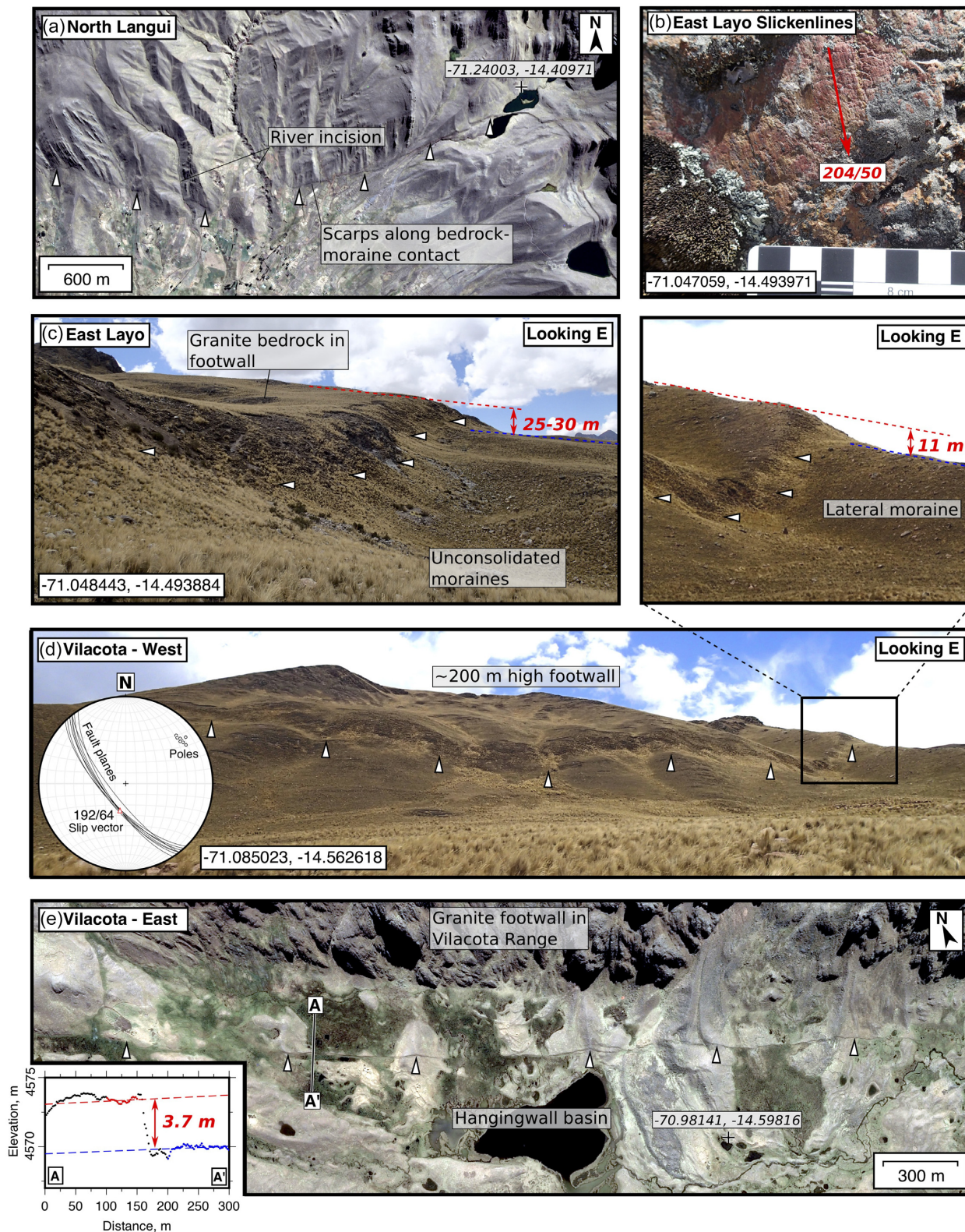


Figure 10. Photographs and satellite imagery of faults around Langui-Layo. (a) Digital Globe image from Google Earth of a scarp along the bedrock-alluvium contact north of Langui identified by Sébrier *et al.* (1985). (b) Slickenlines on the surface of the East Layo Fault (the scale card has 1 cm increments). (c) Photograph of the East Layo Fault showing the 25–30 m vertical offset measured from SRTM 30 m DEM. (d) Panoramic photograph of the Vilacota Fault cutting lateral moraine deposits near its western tip (zoom shown inset). Also inset is a collection of fault plane orientation measurements from this section of the fault. The slip vector of the fault plane is marked by the small red triangle with orientation 192/64. (e) Digital Globe image from Google Earth of the scarps in the eastern portion of the Vilacota Fault cutting glacial deposits draped off the high Vilacota Range to the north. Inset is an elevation profile taken across the scarp from the Pleiades DEM shown in Fig. S4.

steepening of the lateral moraine crests towards the lake shores, are suggestive of buried active normal faults along the lake edge, which could account for the relative uplift of marl deposits at localities M1 and M3 (Fig. 9; North and South Langui Faults). However, we were unable to measure the slip rate on these faults without an estimate of the age of the marl deposits and their depth of deposition.

2.3.2 Vilacota Fault

The Vilacota Fault reaches the surface in the east of the Langui-Layo Basin (Fig. 9a) as ~20 km of E–W trending, south-facing scarps cutting lateral moraines and glacial drift deposits along the southern edge of a 200–700 m high footwall escarpment (Figs 10d and e). The sense of motion across the recent scarp is uplift to the north, which is consistent with uplifting the high mountains of the Vilacota Range, the marl deposits at locality M2 and the back-tilted, low-relief surface south-east of Layo town (Fig. 9).

We generated a DEM of the Vilacota Fault scarp using Pleiades bi-stereo panchromatic imagery and the same methods described in Section 2.2, with the resulting point cloud gridded at a slightly coarser 2×2 m resolution (Fig. S4). Along the western section of the fault, the normal-faulting scarps cutting the crests of lateral moraines are between 7 and 13 m high (Fig. 10d, Fig. S4). Along the fault's eastern section, the scarps are smaller, between 3 and 5 m high, and cut through recent glacial and landslide deposits in a U-shaped glacial valley 100 m south of the Vilacota Range front (Figs 10e and S4). It is possible that recent erosion or deposition in the hangingwall axial valley may have erased evidence of earlier scarps along the eastern section of the fault.

We used the variations in the fault plane orientation near the Vilacota Fault's western tip to reconstruct the slip vector. Active normal faults that have been exposed by excavation are often corrugated, with the slickenlines subparallel to these corrugations (Jackson & McKenzie 1999). As a result, the corrugated planes will all contain the fault slip vector. We found that all of the fault plane measurements contain a common vector of ~192/64 (Fig. 10d, inset), which indicates the Vilacota Fault has a NNE–SSW orientated slip vector, subparallel to the fault slip vectors at Cusco and Sangarara.

No direct dating is available from Vilacota, though assuming the scarps formed following moraine deposition in the LGM would yield a speculative throw rate of ~0.1–1.3 mm yr⁻¹. Using measurements of the fault plane strike and dip (130–140/60–70), the horizontal extension rate on the Vilacota Fault would be 0.1–0.8 mm yr⁻¹ and the fault slip rate would be 0.1–1.6 mm yr⁻¹.

2.4 Parina Fault

The Parina Fault is situated ~70 km south of Ayaviri and represents a marked across-strike jump in the NW–SE trending fault system cutting across the mountain belt (Figs 1 and 11). The surface trace of the fault follows the contact between a 100–150 m high, incised footwall escarpment formed of Oligo–Miocene volcanoclastic rocks and a 1–2-km-wide Quaternary hangingwall basin (Fig. 11). Along the southern section of the fault, Holocene scarps outcrop along the footwall-basin contact (Fig. 12). The morphological features at Parina are typical of the other normal faults between Cusco and Langui-Layo discussed earlier, but are generally more subdued. For example, the footwall relief at Parina is less than half that of the Tambomachay, Cusco and Sangarara Faults, suggesting the Parina Fault has accommodated less total slip (assuming their footwalls are equally erodable). In addition, off-fault deformation

preserved as scarps with the same kinematics as the Parina Fault, but outcropping in the uplifted footwall (Figs 12c and d), implies that recent deformation may not be localized onto a single discrete structure.

The southern section of the Parina Fault ruptured in a M_w 6.1 normal-faulting earthquake in 2016 (Wimpenny *et al.* 2018). Twelve kilometres of 10–30 cm high surface ruptures were mapped south of Lake Saguanani that are coincident with NW–SE trending, metre-high scarps cutting through bedrock and the overlying moraine cover. We generated two DEMs of the Parina scarps using low altitude drone-based imagery—one along the northern section of the fault near Lake Saguanani, and one along the southern section of the fault southeast of Parina village (Fig. S5; see discussion in Section 2.1.2 for details on the DEM construction method). Near Lake Saguanani, the scarps vertically offset the crests of lateral moraines by between 2 and 9 m and reverse the local slope direction, but preserve no evidence for lateral offsets (Fig. S5). Assuming a LGM age for the moraines and scarps would yield a speculative fault throw rate between 0.1 and 0.9 mm yr⁻¹. Taking the dip and rake determined by Wimpenny *et al.* (2018) for the Parina earthquake fault plane (40/–100), the throw rate would equate to an extension rate of 0.1–1.1 mm yr⁻¹ and a fault slip rate of 0.1–1.4 mm yr⁻¹.

The direction of extension across the Parina Fault is constrained by both field slip vector measurements (Fig. 12e) and modelling of the 2016 earthquake to be 235–245° (NE–SW, Wimpenny *et al.* 2018). In addition, along the northern section of the fault, between Ocuvi and Lake Saguanani, an exposure of bedrock fault plane perched 70 m above the hangingwall basin preserves the sense of recent fault slip with slickenlines that have azimuths between 222° and 216° (Fig. 12a). The same fault plane also preserves a reverse-sense geological offset between Cretaceous rocks in the hangingwall and Oligo–Miocene rocks in the footwall (Fig. 12a). Combined, these observations suggest that the region around Parina was shortening at some time since the mid-Miocene, and that the Parina Fault has been reactivated as a normal fault. Using the footwall relief (~100–150 m) and an uplift-to-subsidence ratio of 1:2–3 (e.g. Armijo *et al.* 1996) the total fault throw is likely to be on the order of 300–600 m. Given the throw rate of 0.1–0.9 mm yr⁻¹, the Parina Fault may have started accommodating extension sometime between 0.5 and 6 Ma.

2.5 Faults around Lake Lagunillas

2.5.1 North and South Lagunillas Faults

Lake Lagunillas is a 17-km-long, 5-km-wide intramontane lake that lies ~50 km southeast of Parina (Figs 1 and 13). No active faults have previously been mapped in this area, though a number of the geomorphic features recognized from the active normal faults at Cusco, Sangarara and Langui-Layo are also apparent at Lagunillas. For example, the linearity of the lake's northern shoreline, the asymmetry of the topography either side of the lake, and the rivers draining the lake to the north that are incising deep gorges into bedrock all suggest the northern shore may be fault bounded (Fig. 13; North Lagunillas Fault).

Towards the southeastern end of Lake Lagunillas both the northern and southern shorelines become lobate and the lake narrows (Fig. 13). In the same area, a 9-km-long, southwest-facing scarp trends subparallel to the southern shoreline of the lake and reverses the local slope (Fig. 14a; South Lagunillas Fault). SRTM 30 m topography reveals the scarp is around 40 m high (Fig. 14b),

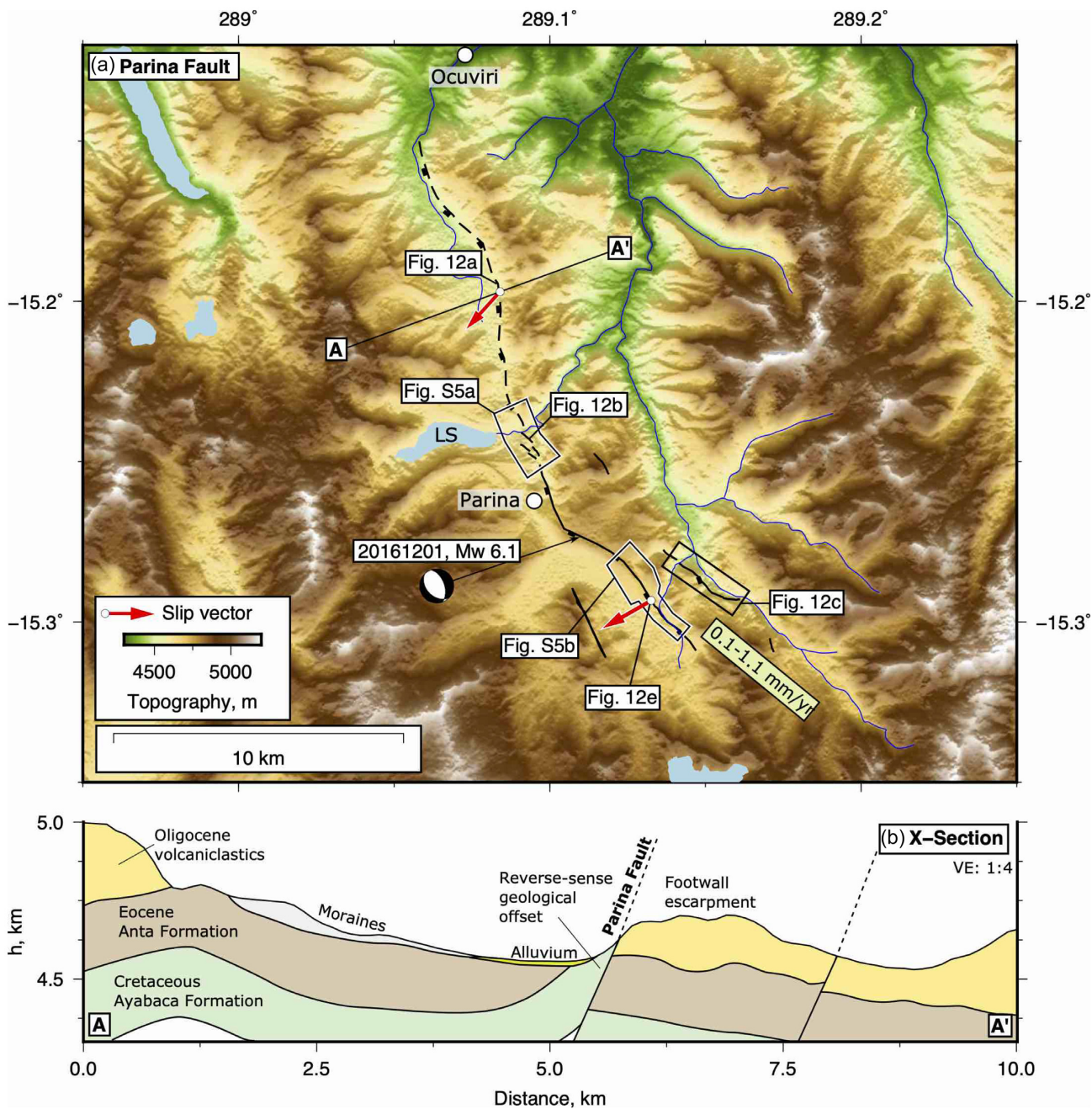


Figure 11. Overview of active faults at Parina. (a) SRTM 30 m DEM and mapped active faults. LS, Lake Saguanani. Field photographs of the fault scarps are shown in Fig. 12. Drone DEMs over the northern and southern section of the fault that ruptured in the 2016 Parina earthquake are shown in Fig. S5. The 12th December 2016 Parina earthquake moment tensor was determined by modelling teleseismic body-waveforms, InSAR observations and surface ruptures in Wimpenny *et al.* (2018). (b) Geological and topographic cross section across the northern section of the Parina Fault, with the geology taken from the INGEMMET 1:50 000 Ocuvi Sheet 31-u-IV (Carlotto & Cardenas 2009).

therefore uplift in the footwall of this fault may also account for the narrowing shoreline at the southern end of Lake Lagunillas. As the fault reverses the local slope direction and is associated with no large-amplitude topography, the South Lagunillas Fault is likely to have accommodated little total slip.

2.5.2 Ululunasa and Willa-Willa Faults

Two kilometres east of Lake Lagunillas a set of south-facing, WNW–ESE trending scarps connect to a prominent ~15-m-high bedrock fault plane damming Lake Ululunasa’s northern shore

(Figs 13 and 14c). This bedrock fault plane occurs along the base of a 100–150-m-high footwall escarpment formed of Paleocene conglomerates (Fig. 14c). A 10-m-wide wind gap cut into the footwall is elevated ~5 m above the current lake level and marks the old course of the lake outlet, suggesting the lake basin has been down-thrown in the hangingwall of a south-dipping normal fault (Fig. 14c). The bedrock fault plane did not preserve any slip-direction indicators. Assuming the footwall ridge line has been uplifted following the onset of extension ~5 Ma, and taking a footwall-uplift-to-hangingwall-subsidence ratio of between 1:2 and 1:3, would yield a speculative fault throw rate on the order of ~0.06–0.1 mm yr⁻¹.



Figure 12. Photographs and satellite imagery of fault scarps at Parina. (a) Exposed bedrock fault plane between Ocuviiri and Lake Saguanani at the location of the cross section in Fig. 11(b). People are highlighted for scale. (b) Fault scarps cutting lateral moraines near Lake Saguanani that were coincident with surface ruptures from the 2016 Parina earthquake. Topographic profiles across these scarps are shown in Fig. S4. (c) Digital Globe image from Google Earth of a fault scarp cutting the footwall of the Parina Fault. (d) Photograph of a sag pond along the scarp cutting the Parina Fault footwall shown in (c). (e) Photograph of the surface ruptures of the 2016 Parina earthquake and the offset features that can be used to reconstruct the fault slip vector (red arrow).

Fifteen kilometres southeast of Lake Ululunasa, the Willa-Willa Fault is expressed as a ~20-km-long, NW–SE trending, southwest-facing scarp cutting across the Willa-Willa Range (Fig. 13). At the fault's southeastern tip, the normal-faulting scarp reverses the local slope direction, causing incision in the uplifting footwall and forming sag ponds dammed against the scarp in the downthrown hangingwall (Figs 14d and e). The scarp preserves two distinctly different vertical offsets. Along the crests of parallel spurs the vertical offset is ~5–15 m, whilst within the intervening valleys the

scarp is significantly smaller, around ~1–2 m high (Figs 14d and e). We interpret these differences to reflect the preservation of the older, cumulative scarp on the spur crests, whilst within the intervening valleys the older scarp has been eroded, preserving only the more recent surface offsets. As the scarp is not associated with any large-amplitude topography and reverses the local slope, it is expected that the Willa-Willa Fault has accommodated little slip as a normal fault.

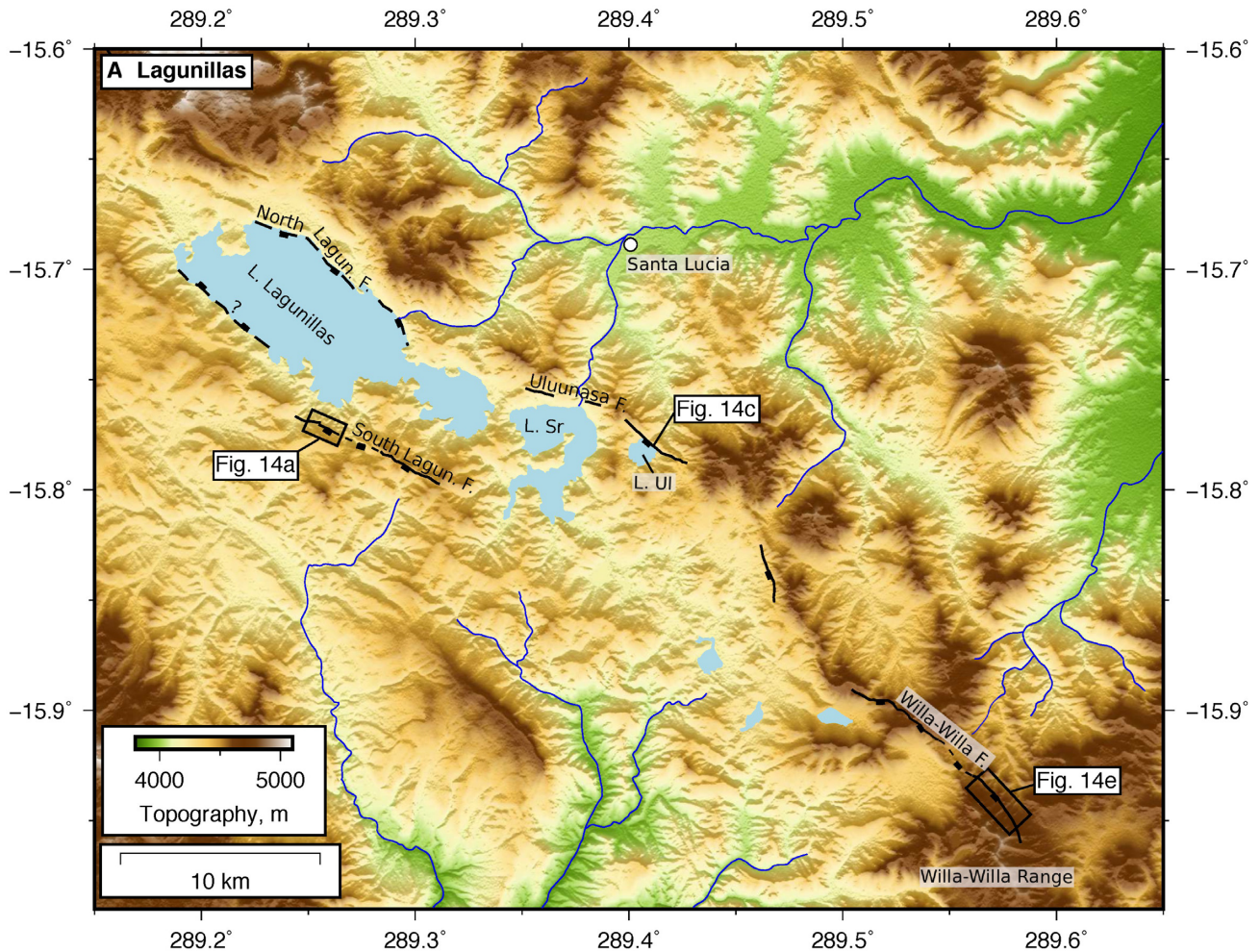


Figure 13. SRTM 30 m DEM and active faults near Lake Lagunillas and Santa Lucia. The lakes are: L. SR, Lake Sararacocha and L. Ul, Lake Ululunasa. Photographs and satellite imagery of the faults are shown in Fig. 14.

2.6 Huambo-Cabana Conde Faults

On the southern edge of the Peruvian Altiplano, between the northern flank of Sabancaya Volcano and the Colca Canyon (Fig. 1), Sébrier *et al.* (1985) identified 28 km of E–W trending, south-facing normal fault scarps that offset recent lava flows by 10–30 m. These scarps, collectively known as the Huambo-Cabana Conde Faults, preserve slickenlines with a $\sim 190^\circ$ azimuth (Mercier *et al.* 1992).

Between 2002 and 2013 three moderate-magnitude earthquakes and a swarm of microseismicity occurred within the Huambo-Cabana Conde Fault Zone. Jay *et al.* (2015) used InSAR and regional seismic data to suggest that the M_w 5 earthquakes ruptured north-dipping normal faults between 0 and 8 km depth and that reached the surface ~ 5 km south of the faults mapped by Sébrier *et al.* (1985). Both Sébrier *et al.* (1985) and Jay *et al.* (2015) attributed the kinematics of these faults to a regional pattern of \sim N–S extension throughout the northern Altiplano. The depth of slip in the 2002–2013 earthquakes, and the 10–15 km length of some of the fault surface traces, has been used to support the view that the Huambo-Cabana Conde Faults are accommodating tectonic extension throughout the seismogenic crust. However, it is possible that the extension direction across the Huambo-Cabana Conde Faults is influenced by the differential stresses in the crust due flank collapse of Sabancaya Volcano into the 3000-m-deep Colca Canyon (e.g. Miller & Dunne 1996), and their slip vectors do not accurately

reflect deformation in response to regional tectonic motions. For this reason, we do not consider the kinematics and slip rates on these faults further.

2.7 Summary of Faulting in the South Peruvian Andes

The faults described in this study form a 20–40-km-wide, right-stepping en-echelon band trending NW–SE obliquely across the Peruvian Altiplano. Individual fault segments are between 10 and 20 km long, strike between E–W and NW–SE and have a predominantly southwestwards dip. The fault lengths are similar to the seismogenic thickness in the area estimated from earthquake source mechanisms (Devlin *et al.* 2012; Wimpenny *et al.* 2018).

The recent sense of slip on all of the faults is extensional with a varying component of left-lateral shear, and the faults consistently accommodate motion along slip vectors that are subparallel to the shortening direction in the adjacent sub-Andean forelands, irrespective of the fault strike (Fig. S6; see also Wimpenny *et al.* (2018)). Near Cusco, this is manifest as NNE–SSW extension on mainly E–W striking faults, whilst near Parina the faulting is NE–SW extension on NNW–SSE striking faults. Repeat measurements of slickenlines in the field, and a comparison between the Parina earthquake slip vector measurements with seismology and InSAR modelling, indicate the slip vector azimuths are accurate to within $\pm 5^\circ$.

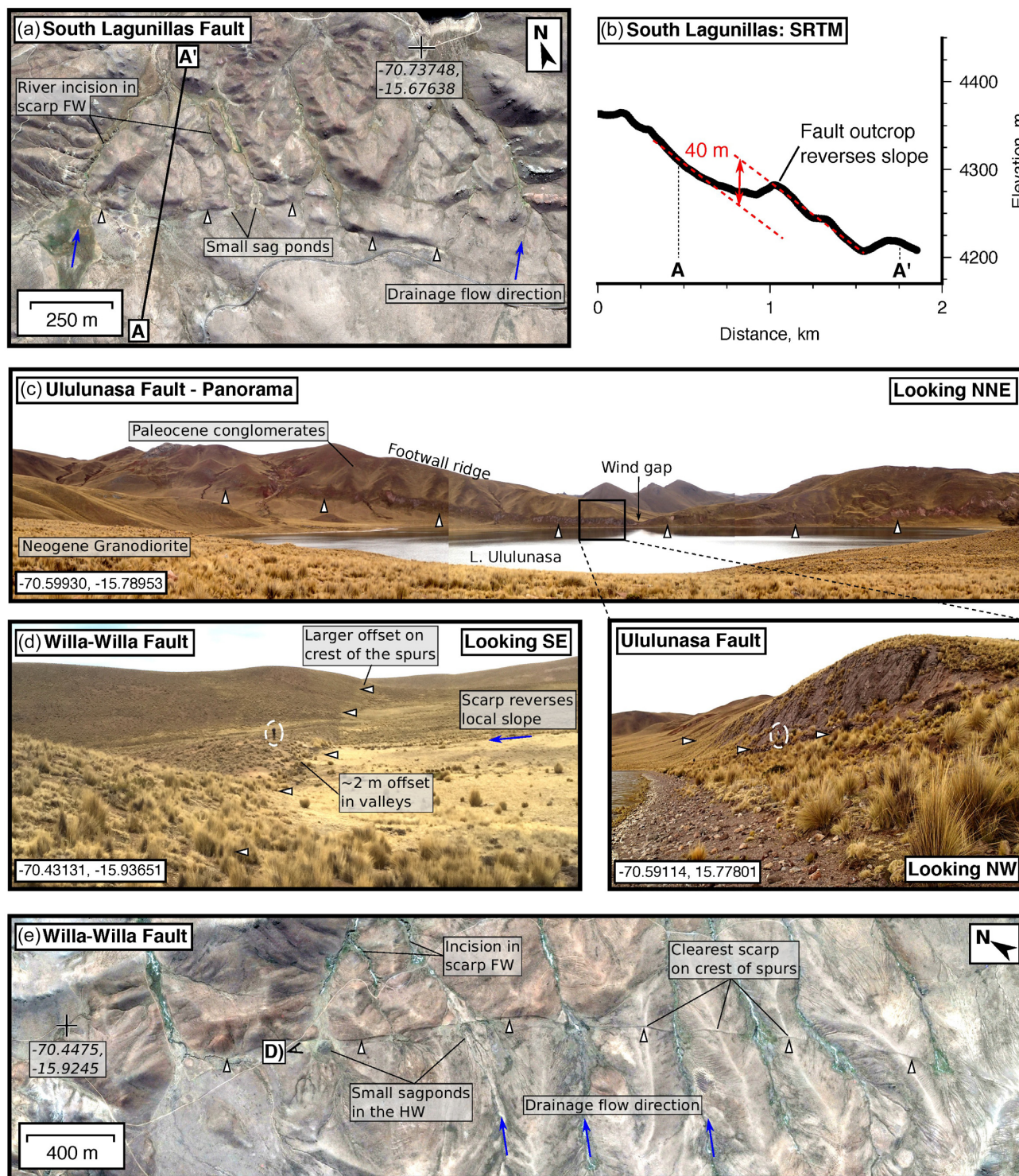


Figure 14. Satellite imagery and photographs of faults near Lake Lagunillas. (a) Digital Globe image from Google Earth of the South Lagunillas Fault (see Fig. 13). (b) Topographic profile extracted from the SRTM 30 m DEM across the scarp in (a). (c) Panoramic photograph of the Ululunasa Fault. The fault is damming a small lake by uplifting its outlet, forming a wind gap on the northern shore. A photograph of the exposed fault scarp is shown inset. (d) Photograph of the Willa-Willa Fault with people highlighted by a white circle for scale. (e) Digital Globe image from Google Earth of the Willa-Willa Fault cutting across NE–SW trending spurs and reversing the local slope direction.

Previously published measurements of fault slip vectors in south Peru are consistent with our inferred \sim NNE–SSW direction of extension near Cusco (Sébrier *et al.* 1985; Mercier *et al.* 1992). Further south, near Lake Titicaca, our inferred NE–SW direction

of extension is roughly consistent with the predominantly \sim N–S, but also \sim NE–SW, slip vectors measured on minor faults within the shallow sedimentary cover of the Eastern Cordillera by Mercier *et al.* (1992) and Bellier (1989). Some of the variability between

our slip vector measurements and those of Mercier *et al.* (1992) may result from weak horizons within the sedimentary basins decoupling the shallow sediments from deformation in the underlying basement (e.g. Cornet & Röckel 2012). As a result, we consider our estimates of the extension direction as being more representative of the regional strain than those of Mercier *et al.* (1992) near Lake Titicaca, as we have used the slip direction recorded on bedrock exposures of normal faults that have accommodated hundreds of metres of total slip, rather than faults contained solely in the sedimentary cover with a few metres of slip.

Our field measurements of fault slip vectors are also generally consistent with the kinematics of well-constrained earthquake focal mechanisms with $M_w > 5.5$ in south Peru (Fig. 1). However, there is significant variability in the strikes of the nodal planes and slip vectors of the focal mechanisms of $M_w < 5.5$ earthquakes. Part of this variability results from the earthquake mechanisms of low M_w 5 events being derived from long-period surface wave observations, which have limited sensitivity to the components of the moment tensor equivalent to vertical dip-slip for shallow (<10 km) centroid depth events (Dziewonski *et al.* 1981). In addition, many of the low M_w 5 earthquakes are unlikely to have ruptured the full, 10–15-km-thick seismogenic layer, therefore will not be representative of the dominant strain in the region (e.g. Brune 1968). In contrast, earthquakes that break the full seismogenic layer (i.e. $M_w > 5.5$) match the field measurements of fault slip vectors to within $\pm 5^\circ$, as they reflect the dominant crustal strain in the region and have been derived using the more accurate methods of teleseismic body-waveform modelling or radar geodetic measurements (e.g. Devlin *et al.* 2012; Wimpenny *et al.* 2018).

The Tambomachay, Pachatusan and Parina normal faults reactivate structures that preserve a reverse-sense geological offsets. Similarly, the trend of all the normal faults follows the predominantly NW–SE trend of Miocene reverse faults in the Peruvian Altiplano (Perez *et al.* 2016b), implying that the pre-existing structural fabric has been important in localising the recent extensional strain. Reactivation of north-eastward (i.e. foreland-ward) verging thrusts could also account for the consistently southwestward dip of the active normal faults. Where the timing of last major crustal shortening episode has been constrained, it is typically ~ 6 –15 Ma (e.g. Carlotto 2013; Horton *et al.* 2015), placing the recent extension as post-Miocene in age. Extrapolating the throw rates on faults where there is good age control implies the current footwall relief on these faults formed in the last ~ 1 –6 Myrs. The post-Miocene extension along reactivated reverse faults in south Peru mirrors the pattern and timing of deformation seen on the southern edge of the Puna plateau in the Argentinian Andes (e.g. Schoenbohm & Strecker 2009).

Age control was only available for the faults around Cusco and Sangarara. At both these localities the cumulative horizontal extension rate across the whole normal-fault system is in the range ~ 1 –4 mm yr⁻¹ (Table 2). It is unlikely the cumulative extension rate is much larger than 4 mm yr⁻¹, as extension rates in the plateau would then exceed the shortening rate in the sub-Andes (e.g. Oncken *et al.* 2012). Between Langui-Layo and Lagunillas there is no robust age control on the fault offsets. However, the Vilacota and Parina Faults offset lateral moraine deposits that probably date to the Last Glacial Maximum (~ 10 –45 ka) by 5–10 m, yielding speculative extension rates $\lesssim 1$ mm yr⁻¹ (Table 2). We were not able to make any estimates of the extension rates across the faults near Lagunillas at the southeastern end of the study area, though based on the subtle morphological expression of faulting in this region the extension rates are expected to be small (i.e. $\lesssim 1$ mm yr⁻¹).

3 DISCUSSION

3.1 Preservation and morphology of normal faulting in south Peru

A number of the normal faults discussed above were identified on the basis of metre-high fault scarps that occur in the mountains, perched above the local base level, and with no associated large-amplitude topography. A prime example is the spectacular scarps on the Qoricocha Fault (Fig. 3a). At first glance, the Qoricocha Fault may appear to be the dominant structure accommodating deformation in the area on the basis of the 6-m-high, fresh-looking scarp cutting an otherwise undisturbed surface. However, this fault has been uplifted relative to the Cusco Basin floor by larger vertical motions on the Tambomachay and Cusco Faults over the late Quaternary (<1 Ma). Unlike in the mountains, on the basin-bounding faults earthquake scarps are rarely preserved due to deposition in their hangingwalls and incision in their footwalls. Therefore, well-preserved fault scarps are not an accurate indicator of the long-term fault activity or the relative slip rates of faults in south Peru. The Qoricocha scarps are probably exceptionally preserved due to the recent deposition of glacial sediments and their subsequent abandonment in a low erosion rate environment.

A more accurate indicator of fault activity throughout the late Quaternary is the footwall relief and the pattern of stream incision across the fault trace. For example, sharp changes in river incision and the relief across the Cusco, Sangarara and Yanoaca Faults make them identifiable in the field. However, the pattern of stream incision is only preserved because their hangingwall basins remain isolated from headward erosion along the Vilcanota River valley, which drains into the Amazon Basin. In places where headward erosion has scoured the hangingwall basins of normal faults, such as the western portion of the Anta Basin west of Cusco, the sharp transition in stream incision is no longer preserved, and the presence of normal faulting is more difficult to identify (as seen for the normal faults in Central Italy (D'Agostino *et al.* 2001)). Nonetheless, subtle triangular facets and 'wineglass canyon' incision patterns do remain, though these features cannot easily be used to reconstruct fault slip rates.

Another key indicator of fault activity is the height of normal fault's footwall escarpment, which is partly controlled by the footwall lithology, and therefore also subject to preservation bias (e.g. Goldsworthy & Jackson 2000). An excellent example of this preservation bias is seen at Sangarara (Fig. 6). Suarez *et al.* (1983) identified a ~ 3 -km-long section of the Sangarara Fault associated with 50-m-high triangular facets separating graded fan surfaces from the steep, incised footwall escarpment (see Fig. 8a). Along-strike of this well-preserved section, the fault morphology changes significantly. One kilometre north of Lake Pomacanchi, the Sangarara Fault has no triangular facets, but a rounded range front with little change in the pattern of stream incision across the bedrock-alluvium contact. The transition in the fault morphology correlates with a geological contact between Paleocene sandstones in the well-preserved section of the footwall, and a mixture of Cretaceous limestones, shales and evaporites forming the poorly-preserved section of the footwall (Carlotto *et al.* 2009).

From the discussion above, it is clear that the preservation of normal faulting in south Peru is highly variable. As a result, there may be parts of the study area not discussed so far where active normal faulting is taking place, most likely in the areas between the mapped faults, kinematically linking them together. One particular region is west and south of Cusco, where deep canyons cut by

Table 2. Measurements from active faults in south Peru. v_{slip} is the fault slip rate, v_{hor} is the horizontal extension rate (heave rate) and ϕ_{sv} is the slip vector azimuth. LGM refers to landforms that have been assumed to be Last Glacial Maximum in age.

Fault	Landform	Dating	Age (ka)	v_{slip} (mm yr ⁻¹)	v_{hor} (mm yr ⁻¹)	ϕ_{sv} (°)
Qoricocha	drift	radiocarbon	8–45	0.2–1.4	0.2–1.1	201
Tambomachay	lateral moraine	radiocarbon	8–45	0.1–0.4	0.1–0.3	198–205
Pachatusan	lateral moraine	LGM	10–45	0.5–3.1	0.4–2.0	~210
Sangarara	alluvial fan	radiocarbon	10–20	3.6–7.9	2.0–4.5	190
Vilacota	lateral moraine	LGM	10–45	0.1–1.6	0.1–0.8	192
Parina	lateral moraine	LGM	10–45	0.1–1.4	0.1–1.1	235–245

tributaries of the Apurimac River could have incised through the uplifting footwalls and subsiding hangingwalls of most faults, if present, leaving little detectable trace of active faulting.

At the southeastern end of the fault system near Lagunillas, many of the faults (e.g. Willa Willa, South Lagunillas Faults) reverse the local slope direction and are associated with no significant footwall escarpments. These morphological traits may reflect reduced amounts of slip on the southeastern end of the fault system as the extension dies out, which would be consistent with the limited recent extension in the Bolivian Altiplano (e.g. Mercier *et al.* 1992; Lamb & Hoke 1997; Lamb 2000). As the Bolivian Altiplano is on average 400–500 m lower elevation than the Peruvian Altiplano, the along-strike decrease in the extension may be a product of the decreasing gravitational body forces acting on these different sections of the mountain range (e.g. England & Molnar 1997a). Alternatively, the subdued normal fault morphology could reflect recent activation of the faults near Lagunillas, or that the extension becomes more distributed in this region.

3.2 Dynamic implications: decrease in the shear forces supported by the sub-Andean detachment

Active normal faults in Peruvian Altiplano that reactivate Miocene age reverse faults are evidence that the force balance in the mountain belt, when averaged over multiple earthquake cycles, has changed in the last ~5 Myr (e.g. Dalmayrac & Molnar 1981; England & Houseman 1989). Prior to the onset of extension, it is likely that a balance between the forces acting on the boundary of the mountains and buoyancy forces did exist, leading to the formation of the high-elevation, low-relief Altiplano plateau (Molnar & Lyon-Caen 1988).

The orientation and timing of slip on the normal faults suggests that the recent extension is a response to a decrease in the forces transmitted across the range front in the sub-Andes (Wimpenny *et al.* 2018). In particular, the high Andes are extending parallel to the shortening direction in the sub-Andes, and parallel to gradients in the topography on the eastern margin of the mountain belt. Our measurements of the normal fault slip rates can be used to place bounds on the decrease in the forces transmitted across faults in the sub-Andes using a two-dimensional, static force balance (modified from Lamb 2006, Fig. 15). A 2-D geometry is appropriate, as the measured slip vector azimuths on the normal faults are parallel (within $\pm 10^\circ$) to the direction of shortening in the sub-Andes, with little evidence for motion along-strike the mountain belt. A moment-tensor summation of the shallow crustal earthquakes shown in Fig. 1 confirms this pattern, with across-strike extension accommodating ~20-times greater strain than along-strike shear. Therefore it is only necessary to consider forces acting vertically and perpendicular to the strike of the mountain belt to account for 95 per cent of the recent deformation (Dalmayrac & Molnar 1981). A static model is

appropriate as the finite extensional strain accommodated by the normal faults is small ($\lesssim 1$ per cent; Sébrier *et al.* 1985), therefore changes in the crustal thickness and the geometry of the Andes has probably had little effect on the force balance since the extension began.

Three dominant forces act on the sub-Andes: (1) the weight of the crust overlying the detachment fault (Mg on Fig. 15), (2) the shear force supported by the detachment (F_s on Fig. 15), and (3) the horizontal force acting on the back of the sub-Andes (F_f on Fig. 15). All three must be in a quasi-static balance, therefore it is possible to write an expression for the shear force on the sub-Andean detachment (Lamb 2006):

$$F_s + Mg \sin \theta - F_f \cos \theta = 0, \quad (1)$$

where θ is the dip of the detachment. The force acting on the back of the sub-Andes F_f will be equivalent to the sum of the buoyancy forces resulting from horizontal differences in vertical normal stress $\Delta\sigma_{zz}$ between the mountains and the adjacent forelands (Dalmayrac & Molnar 1981), and any differential stresses $\Delta\sigma$ resulting from deformation within the mountains:

$$F_f = \int_0^L \Delta\sigma_{zz} dz + \int_0^L \Delta\sigma dz, \quad (2)$$

where L is the thickness of the crust above the downdip edge of the detachment (Fig. 15). Together, eqs (1) and (2) link the shear forces supported by faults on the edge of a mountain belt to the differential stresses within its interior.

Prior to the onset of extension, the differential stresses within the interior of the plateau were probably negligible (i.e. the second term in eq. (2) was approximately zero), to satisfy the conditions required to form a wide and low-relief plateau (Molnar & Lyon-Caen 1988). Therefore, to account for the recent normal faulting, either the buoyancy forces have increased, Mg has decreased or F_s has decreased (see eqs 1 and 2). As the buoyancy forces are set by the thickness and density of the crust in the Andes and South American forelands, and crustal thinning caused by the recent extension in south Peru is $\ll 1$ per cent, the buoyancy forces are likely to have remained approximately constant over the last ~5 Myr. Similarly, Mg , which is controlled mainly by the area of the sub-Andean wedge, is unlikely to have decreased recently, as material is constantly being incorporated into the fold-thrust belt. Therefore, the most likely explanation for the onset of recent extension is a reduction in the shear strength of the sub-Andean detachment F_s .

Following a decrease in the shear force on the detachment δF_s , the crust at the back of the sub-Andes would be subject to a force perturbation $\delta F_s / \cos \theta$. This force will be supported in the plateau by work done by frictional slip on faults in the brittle crust, and viscous deformation within the underlying ductile crust. The frictional resistance to deformation can be expressed as: $\Delta\sigma_f = 2\mu' \rho g z / (1$

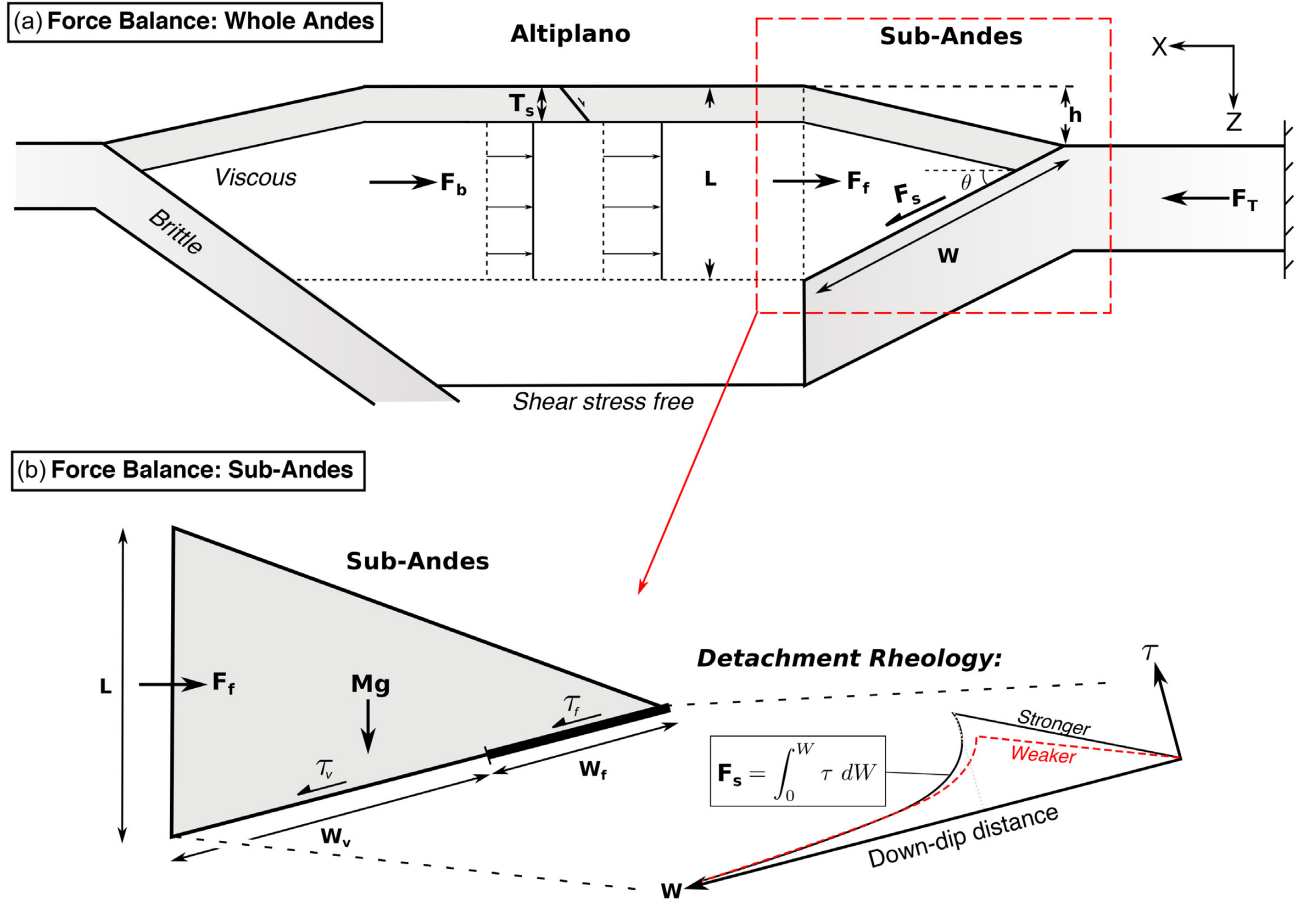


Figure 15. Schematic of the model used to study the force balance in the Andes. (a) A sketch of the force balance across the eastern Andes. F_b are the buoyancy forces caused by horizontal differences in the lithostatic stress, F_s is the shear force on the sub-Andean detachment and F_f is the horizontal force acting on the back of the sub-Andes. (b) Sketch of the force balance in the sub-Andes modified from Lamb, (2006). Frictional and viscous shear stresses on the detachment are denoted τ_f and τ_v , respectively, and Mg is the weight of the wedge. Inset is a schematic of the shear stress distribution as a function of down-dip width along the detachment for two cases: a frictionally weak and frictionally strong detachment. We explore the influence of changing the frictional shear strength of the detachment (w_f , τ_f) on F_s in Fig. 16b. The down-dip width of mechanical coupling (W) on the surface of the underthrusting Brazilian Shield may be unrelated to kinematically measured coupling (Wang & Dixon 2004).

+ μ'), where μ' is the effective coefficient of friction on normal faults dipping at 45° and ρ is the average crustal density (Turcotte & Schubert 2002). To estimate the viscous resistance to deformation, we make the simplification that there is little vertical variation in the horizontal velocity of ductile crustal flow ($\partial u_x / \partial z \approx 0$), as the shear stresses on the base of the Altiplano are likely to be small, and we ignore any vertical component of the velocity field associated with flow around the edge of the underthrusting Brazilian Shield ($u_z \approx 0$, e.g. Bendick *et al.* 2008). These simplifications are equivalent to the thin-viscous sheet approximation (e.g. England & McKenzie 1982). If the ductile crust has some average Newtonian viscosity η the viscous resistance to deformation is given by: $\Delta\sigma_v = 2\eta\dot{\epsilon}$, where $\dot{\epsilon}$ is the strain rate. Using this model of the rheology beneath the Andes we can use eqs (1) and (2) to write an expression for the extensional strain rate in the ductile crust as a function of the drop in shear force supported by the sub-Andean detachment:

$$\begin{aligned} \delta F_s &= \left(\int_0^{T_s} \Delta\sigma_f dz + \int_0^{L-T_s} \Delta\sigma_v dz \right) \cdot \cos\theta \\ &\approx \frac{\mu'}{1+\mu'} \rho g T_s^2 + 2\eta\dot{\epsilon}(L - T_s), \end{aligned} \quad (3)$$

where T_s is the depth over which faults support shear stresses by frictional resistance in the brittle crust and we have assumed that $\cos\theta \approx 1$ as $\theta \lesssim 10^\circ$ (Fig. 15).

The thickness of the deforming crust at the back of the sub-Andes, L , is equivalent to $W\sin\theta + h$, where W is the down-dip width of the underthrusting Brazilian Shield and h is the height of the mountains. The horizontal extent of underthrusting beneath the Peruvian Andes has been estimated from gravity measurements (Fan *et al.* 1996), shortening estimates in the sub-Andes (Kley 1996) and surface wave tomography (Ma & Clayton 2014) to be ~ 100 – 200 km. The dip of this interface is taken to be ~ 7 – 10° based on the mechanisms of thrust-faulting earthquakes beneath the sub-Andes (Emmerson 2007) and the average height of the mountains h is taken as 4 km. Using these geometrical constraints, $L \approx 16$ – 39 km.

The average viscosity of the crust in the Andes has been estimated from the relationship between topography and deformation rates to be $\sim 10^{21}$ – 10^{22} Pa s (Lamb 2000; Husson & Ricard 2004). These values are typical for vertically-averaged crustal viscosities in mountain belts (e.g. Flesch *et al.* 2001). Earthquake source models indicate the brittle crust in the Altiplano T_s is ~ 10 km thick (Wimpenny *et al.* 2018), and we assume that the normal faults have $\mu' \lesssim 0.2$ (Copley 2017).

Calculating the extensional strain rate in the Peruvian Altiplano from fault slip rates requires some assumptions regarding the distribution of the deformation as a function of depth. It is possible that the extension rates on each individual fault are not constant downdip, as slip may become partitioned as a function of depth in systems of closely spaced normal faults (e.g. Finocchio *et al.* 2016). Nonetheless, the cumulative extension across the entire fault system is constant as a function of depth, which is the measurement key to our modelling.

The discontinuous fault slip rates measured at the surface probably reflect a more continuous pattern of deformation within the underlying ductile crust (Molnar 1988). Therefore, by spatially averaging the fault slip rates, one can recover the horizontal components of the strain rate field in the ductile layer (Haines & Holt 1993; England & Molnar 1997b). The majority of the recent deformation in south Peru has been plane strain in a vertical cross-section perpendicular to the mountain belt, with normal faulting mapped between the Eastern and Western Cordilleras (Fig. 1). Therefore an appropriate length-scale to average the velocity gradients over is the width of the plateau (~ 200 km). Given the $1\text{--}4$ mm yr⁻¹ of cumulative extension across the normal faults described above, the late Quaternary extensional strain rate across the plateau would be in the range of $0.5\text{--}2 \times 10^{-8}$ yr⁻¹. If the extensional strain in the ductile crust is concentrated into the $\sim 20\text{--}40$ km around the Cusco-Lagunillas Faults, the local strain rate estimates would be $\sim 5\text{--}10$ times higher, implying an underlying weak zone. Nonetheless, the average deformation rates across the plateau would remain the same. Further measurements of fault slip rates in south Peru will help refine this picture beyond our simple uniform strain assumption.

Given the constraints on the rheology and geometry of the model discussed above, a reduction in the shear force on the sub-Andean detachment by $\delta F_s \lesssim 0.46\text{--}0.95$ TN m⁻¹ would generate the observed extension rate across the Peruvian Altiplano. This value is equivalent to an average shear stress change $\delta\tau \lesssim 4$ MPa (Fig. 16a). The differential stresses acting on the back of the sub-Andes as a result of this change would be $\lesssim 24\text{--}28$ MPa. The average shear stresses on the detachment determined from similar force balance methods are between 15 and 20 MPa (Lamb 2006; Oncken *et al.* 2012), therefore the fractional change in the shear strength of the detachment is $\lesssim 20\text{--}25$ per cent. We consider this estimate to be an upper bound, as it is likely the long-term strength of brittle crust within the Altiplano is smaller than estimated using the depth of earthquake rupture models (e.g. Jackson 2002). Nonetheless, the key result of these calculations is that a small change in the forces transmitted across faults on the margin of a mountain belt can have a significant effect on the rate and style of faulting within its interior, because of the delicate balance of forces in this setting.

A range of different processes could account for a decrease in the shear force supported by the faults on the eastern margin of the Andes. If the shallow (0–20 km), seismogenic portion of the detachment has a frictional rheology described by: $\tau = \mu' \sigma_n$, where σ_n is normal stress and μ' is the effective friction, the necessary weakening could be caused by decreasing the intrinsic frictional strength or increasing the pore-fluid pressures on the fault (Fig. 15b, inset). Either could result from the thrust front advancing onto overpressured or clay-rich sediments in the foreland basin. It is also possible that increasing the thermal gradient along the detachment could have reduced the downdip width of frictional coupling W_f , reducing the forces transmitted between the foreland and the Andes. Calculations for the frictional shear force on the sub-Andean detachment demonstrate that changing either μ' or W_f , even by a small amount

(dependent on the initial μ' and W_f), can easily account for the perturbation to the force balance inferred from the faulting observations (see arrows on Fig. 16b). Alternatively, part of the detachment may have a viscous rheology of the form: $\tau = A\dot{\epsilon}^{1/n}$, where $A \propto e^{1/T}$ is a material property dependent on temperature T and n is the stress exponent (e.g. Ranalli 1995). Small increases in the temperatures along the detachment, or the incorporation of new material with a lower creep strength, could also account for the change in the force balance. However, from the observations of normal faulting alone, it is not possible to determine which of these particular mechanisms may have caused the strength of the detachment to decrease in the forelands of south Peru.

3.3 Transient stress and strain across the Cusco-Lagunillas Faults

In addition to changes in the force balance in the Andes over the last ~ 5 Myr, there is also evidence from GPS and earthquake observations spanning the 2001 M_w 8.4 Arequipa earthquake that the force balance changes every few hundred years due to the accumulation and release of elastic strain in megathrust earthquakes along the margins of the mountain belt.

GPS measurements collected between 1993 and 2000 captured ~ 9 mm yr⁻¹ of NE–SW shortening across the Peruvian Altiplano (Fig. 17a), which is opposite to the sense of late Quaternary strain on the Cusco-Lagunillas Fault system. Seismicity in the Peruvian Altiplano over the same time period consisted of three low M_w 5 normal-faulting earthquakes (Figs 17d and e). Given that there is no evidence of reverse faulting within the plateau, it is likely the shortening captured by the GPS data reflects the accumulation of elastic strain in the brittle crust caused by frictional locking on the adjacent megathrust faults (Bevis *et al.* 2001). Other sources of transient deformation that may affect GPS measurements, such as solid earth tides, hydrological loads and viscoelastic relaxation following glacial unloading or large earthquakes (e.g. Bird & Carafa 2016) cannot account for the long-wavelength pattern of E–W shortening.

Coseismic and postseismic slip on the megathrust in the Arequipa earthquake reversed the interseismic motions at many of the GPS stations (Figs 17a and b). In particular, stations MDRG and MACU captured 216 mm of NE–SW extension across the Cusco-Lagunillas Fault system between 1999 and 2001 (Fig. 17b), which is the same as the sense of late Quaternary strain across the region. Following the Arequipa earthquake, the frequency and moment release from normal and strike-slip earthquakes in the plateau increased (Fig. 17d). The increase in seismicity does not appear to result from changes in the gCMT catalogue's sensitivity to moderate-magnitude earthquakes, as 70 per cent of the events in the time-span 1986–2019 are larger than the magnitude of completeness of the pre-2001 gCMT catalogue ($\sim M_w$ 5.3, see Ekström *et al.* 2012). Although we cannot rule out that the post-2001 change in seismicity is unrelated to the Arequipa earthquake [there are too few events to define a background seismicity rate (e.g. Marsan & Nalbant 2005)], similar changes in the frequency and moment release from overriding plate seismicity have been observed following many megathrust earthquakes (Gomberg & Sherrod 2014), suggesting a causal relationship.

Later in the post-seismic period, between 2008 and 2013, the GPS velocities at all stations had returned to moving landward relative to South America, with shortening concentrated between the coastal stations, and no resolvable strain across the plateau

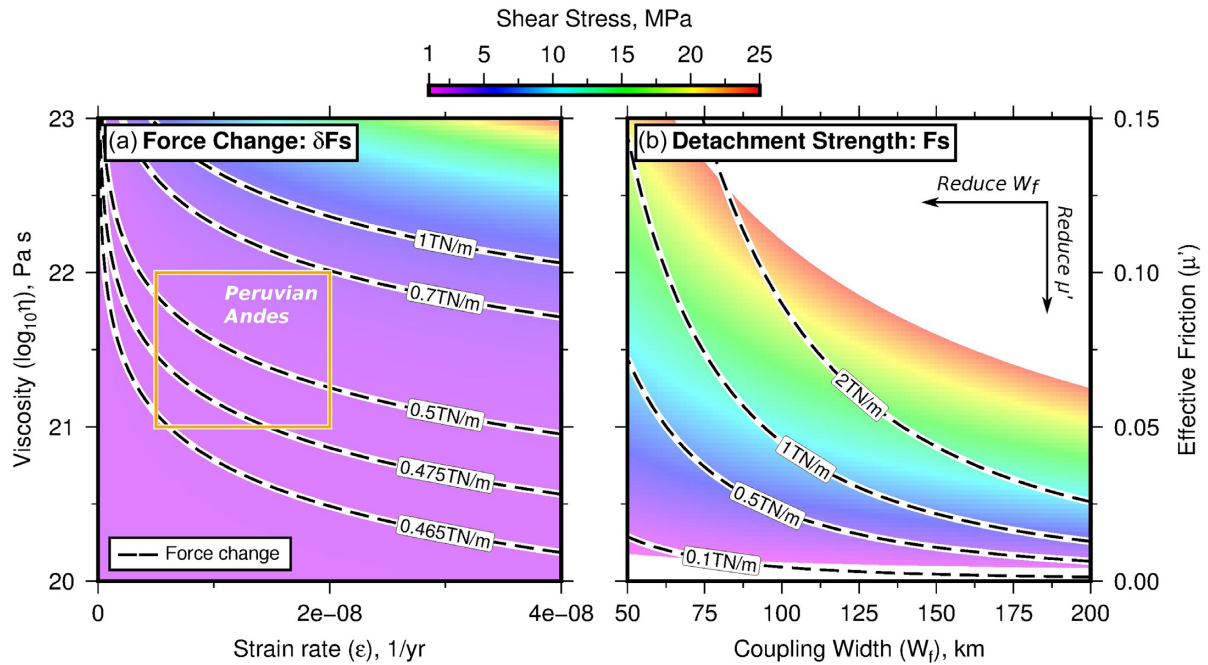


Figure 16. Changes in the force balance needed to account for the slip rates of normal faulting in the Andes. All forces are given in N per metre along-strike (N/m), as we only consider forces acting in cross-section. (a) The shear stress change (coloured background) and shear force change (contours) on the sub-Andean detachment required to account for the late Quaternary extension rate in the south Peru (orange box). Calculations were performed with $W = 200$ km, $h = 4$ km, $\theta = 7^\circ$, $\mu' = 0.2$ and $T_s = 10$ km. (b) Estimates of the average shear stress (coloured background) and shear force (contours) supported by frictional resistance on the sub-Andean detachment for a given frictionally coupled width and effective coefficient of friction using eq. 8 of Wang & He (1999). Calculations in (b) have been performed with the same W , h and θ as in (a).

(e.g. compare the motions at stations CONA, AREQ and LAMP on Fig. 17c). This period of near-neutral strain rates saw the two largest recorded normal-faulting earthquakes in the plateau in 2013 and 2016 (Fig. 17d).

The GPS and earthquake observations indicate that the horizontal, elastic compression of the Andes due to the strain accumulation leading up to the 2001 Arequipa earthquake may have been large enough to temporarily suppress slip on some of the normal and strike-slip faults between Cusco and Lagunillas (as suggested in Cascadia by Wang (2000) and in the Makran by Penney *et al.* (2017)). Co- and post-seismic slip on the megathrust relaxed the elastic compression and unclamped the faults in the plateau, causing a pulse of normal- and strike-slip-faulting earthquakes lasting up until present (2019). This pulse of seismicity has accommodated a uni-axial, NNE–SSW extension with a strain rate of 1.7×10^{-9} 1 yr^{-1} averaged across the plateau (Fig. 17d; inset).

Although the 2001–2019 seismicity represents a marked increase in the seismic deformation within the Altiplano compared to the period 1986–2001, the earthquake moment release is still a factor 3–12 too small to account for the late Quaternary slip rates on the Cusco-Lagunillas Faults. Presumably this deformation deficit will be made up by future normal-faulting earthquakes not captured by the moment-tensor summation, and possibly aseismic deformation within the Altiplano, most likely following another megathrust earthquake. Therefore, although the pattern and long-term rate of extension in the Altiplano is set by differences in gravitational potential energy between the plateau interior and its forelands (Dalmerac & Molnar 1981; Wimpenny *et al.* 2018), the timing of slip on the normal faults may be modulated by small perturbations to the force balance caused by the seismic cycle of the megathrusts along the margins of the Andes. A possible test of this hypothesis would be to compare palaeoseismological estimates of the timing

of earthquakes on the normal faults with the historical record of megathrust earthquakes in south Peru (Silgado 1978).

4 CONCLUSIONS

We find that a system of 10–20-km-long, right-stepping normal faults between Cusco and Lagunillas in the South Peruvian Altiplano are accommodating $\sim 1\text{--}4 \text{ mm yr}^{-1}$ of extension. The azimuth of the extension rotates clockwise from NNE–SSW near Cusco to NE–SW near Parina, which mirrors the rotation of thrust earthquake slip vectors in the sub-Andean foreland. Slip on these normal faults began in the last $\sim 1\text{--}6$ Myr and has reactivated a number of Miocene-age reverse faults. Evidence for normal faulting dies away towards the southeast, near the border between the Peruvian and Bolivian Altiplano, where most of the faults reverse the local slope direction and are not associated with any large-amplitude topography. The onset of extension in the last ~ 5 Myr followed an episode of shortening that ended in the late Miocene, suggesting that the forces acting on the Andes have changed. To account for the extension rates across the Cusco-Lagunillas Faults, the average shear stresses transmitted across the sub-Andean detachment may have decreased by $\lesssim 4$ MPa, that is $\lesssim 20\text{--}25$ per cent of their absolute value. This result highlights the delicate balance of forces that controls the active faulting on the margins of mountain ranges and the faulting within their interiors.

ACKNOWLEDGEMENTS

This work forms part of the NERC- and ESRC-funded project Earthquakes without Frontiers and was partly supported by the NERC large grant Looking into Continents from Space. SW was partly

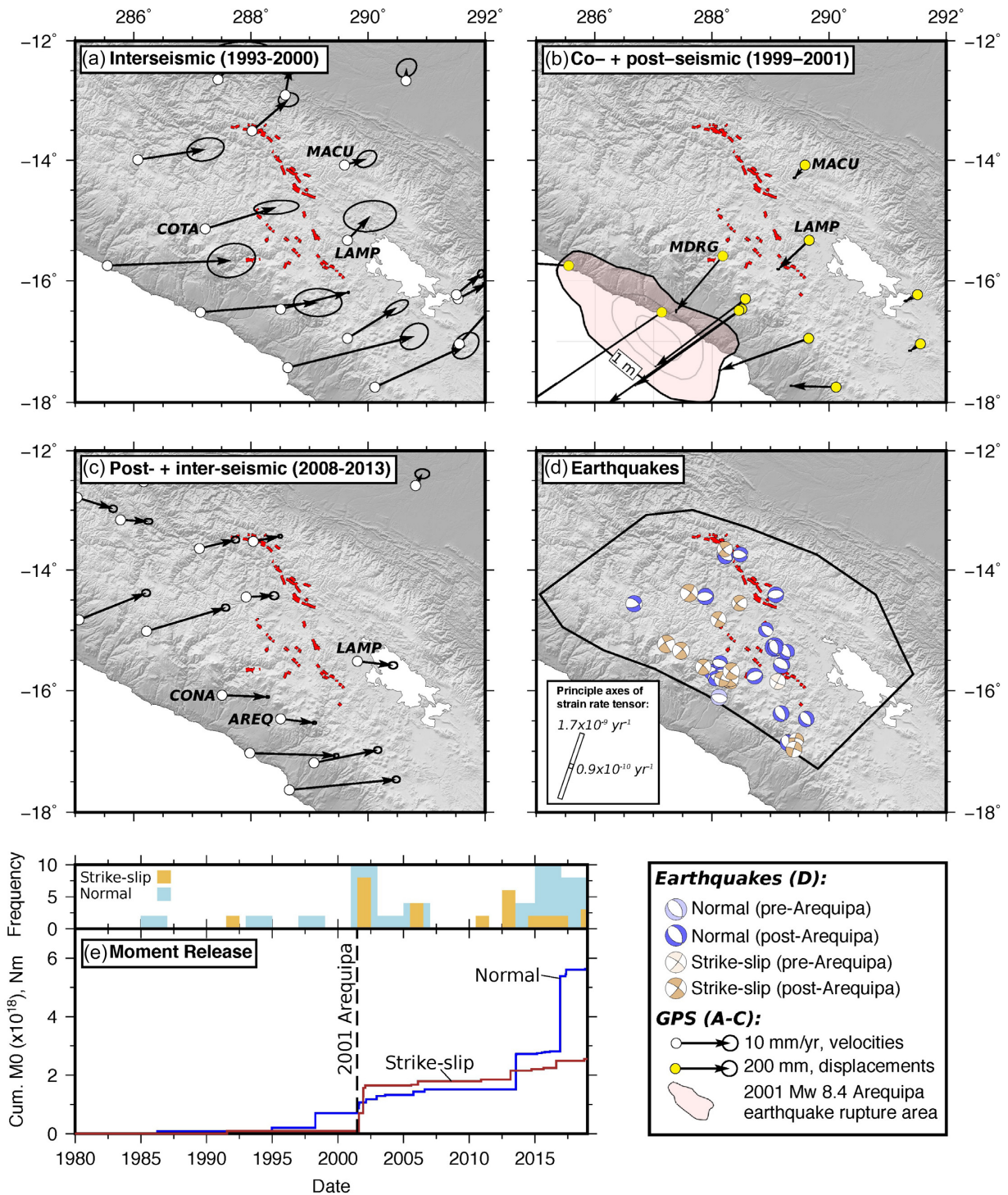


Figure 17. Transient strain in south Peru. (a) Interseismic GPS measurements of the velocity field between 1993 and 2000 from Kendrick *et al.* (2001). All GPS measurements are relative to stable South America. Red lines are the mapped normal faults. (b) Co- and early post-seismic displacements from Pritchard *et al.* (2007) spanning June 1999 to October 2001, capturing the deformation in the 2001 M_w 8.4 Arequipa earthquake. The 1 m (black), 3 and 5 m (grey) coseismic slip contours for the Arequipa earthquake are taken from Chlieh *et al.* (2011). (c) Late postseismic velocities measured by Villegas-Lanza *et al.* (2016) between 2008 and 2013. (d) Shallow (<50 km) earthquakes with $M_w > 4.5$ beneath the high Andes taken from the global CMT catalogue as of June 2019. Inset are the principle axes of the strain rate tensor derived from a summation of the post-Arequipa earthquake moment tensors (2001–2019). White bars represent extension. The summation is performed over the black box in (d) and by taking a seismogenic thickness of 10 km. (e) Cumulative moment release from earthquakes in the high Andes as a function of time, with all mechanisms shown in (d).

supported by the British Geological Survey, a Santander Mobility Grant awarded through the University of Cambridge and the Denman Baynes Senior Studentship at Clare College, University of Cambridge. AOK was partly supported by ARUP. CB, LR, EA and BG were supported by the Peruvian Project "CUSCO-PATA" (Convenio 006-2016 FONDECYT). SW thanks James Jackson, Thomasina Ball and Nicola D'Agostino for reading earlier versions of the manuscript. The authors thank the Editor, Margarita Segou, Micheal Sebrier, Onno Oncken and an anonymous reviewer for constructive comments on this manuscript.

All geological map data are freely available from INGEMMET's web server GEOCATMIN (<http://geocatmin.ingemmet.gob.pe/geocatmin/>). Digital Globe satellite imagery was collected from Google Earth. Pleiades data was obtained from Airbus.

REFERENCES

- Armijo, R., Meyer, B., King, G.C., Rigo, A. & Papanastassiou, D., 1996. Quaternary evolution of the Corinth Rift and its implications for the Late Cenozoic evolution of the Aegean, *Geophys. J. Int.*, **126**(1), 11–53.
- Audin, L., David, C., Hall, S., Farber, D. & Heraïl, G., 2006. Geomorphic evidences of recent tectonic activity in the Forearc, Southern Peru, *Revisita de la Asociacion Geologica Argentina*, **61**(4), 545–554.
- Bellier, O., 1989. Tectonique en extension et changement d'états de contraintes cénozoïque en domaine intra-continental : exemples des bassins intra-cordilléraires des Hautes Andes (Nord Pérou) et du graben de la Wei He (Chine du Nord), *PhD thesis*, University of Paris-Sud, Orsay.
- Benavente, C., Delgado, F., Taipe, E., Audin, L. & Pari, W., 2013. Neotectonica y Peligro Sísmico en el Región Cusco, Technical report, Instituto Geológico Minera y Metalúrgico.
- Bendick, R., McKenzie, D. & Etienne, J., 2008. Topography associated with crustal flow in continental collisions, with application to Tibet, *Geophys. J. Int.*, **175**(1), 375–385.
- Bevis, M., Kendrick, E., Smalley, R., Brooks, B., Allmendinger, R. & Isacks, B., 2001. On the strength of interplate coupling and the rate of back arc convergence in the central Andes: an analysis of the interseismic velocity field, *Geochem. Geophys. Geosyst.*, **2**(11), doi:10.1029/2001GC000198.
- Bird, P. & Carafa, M.M., 2016. Improving deformation models by discounting transient signals in geodetic data: 1. Concept and synthetic examples, *J. geophys. Res.*, **121**(7), 5538–5556.
- Brune, J.N., 1968. Seismic moment, seismicity, and rate of slip along major fault zones, *J. geophys. Res.*, **73**(2), 777–784.
- Cabrera, J. & Sebrier, M., 1998. Surface rupture associated with a 5.3 mb earthquake: the 5 April 1986 Cuzco earthquake and kinematics of the Chincheros-Qoricocha Faults of the High Andes, Peru, *Bull. seism. Soc. Am.*, **88**(1), 242–255.
- Cabrera, J., Sébrier, M. & Mercier, J.L., 1991. Plio-Quaternary geodynamic evolution of a segment of the Peruvian Andean Cordillera located above the change in the subduction geometry: the Cuzco region, *Tectonophysics*, **190**(2–4), 331–362.
- Carlotto, V., 2013. Paleogeographic and tectonic controls on the evolution of Cenozoic basins in the Altiplano and Western Cordillera of southern Peru, *Tectonophysics*, **589**, 195–219.
- Carlotto, V. & Cardenas, J., 2009. Mapa Geológico del Cuadrángulo de Ocuvirí Escala 1:50,000 Hoja 31-u Cuadrante IV.
- Carlotto, V., Mejia, R.R. & Mena, M.O., 2009. Mapa Geológico del Cuadrángulo del Cusco Escala 1:50,000 Hoja 28-s Cuadrante II.
- Carlotto, V., Mejia, R.R. & Mena, M.O., 2010. Mapa Geológico del Cuadrángulo del Cusco Escala 1:50,000 Hoja 28-vs Cuadrante IV.
- Carlotto, V. & Roque, J.C., 2009. Mapa Geológico del Cuadrángulo de Sicuani Escala 1:50,000 Hoja 29-t Cuadrante II.
- Chlieh, M. *et al.*, 2011. Interseismic coupling and seismic potential along the Central Andes subduction zone, *J. geophys. Res.*, **116**(B12), B12405, doi:10.1029/2010JB008166.
- Clark, P.U. *et al.*, 2009. The last glacial maximum, *Science*, **325**(5941), 710–714.
- Copley, A., 2017. The strength of earthquake-generating faults, *J. geol. Soc.*, **174**, doi:10.1144/jgs2017-037.
- Cornet, F.H. & Röckel, T., 2012. Vertical stress profiles and the significance of "stress decoupling", *Tectonophysics*, **581**, 193–205.
- Dalmayrac, B. & Molnar, P., 1981. Parallel thrust and normal faulting in Peru and constraints on the state of stress, *Earth planet. Sci. Lett.*, **55**(3), 473–481.
- Devlin, S., Isacks, B.L., Pritchard, M.E., Barnhart, W.D. & Lohman, R.B., 2012. Depths and focal mechanisms of crustal earthquakes in the central Andes determined from teleseismic waveform analysis and InSAR, *Tectonics*, **31**(2), 1–33.
- Di Naccio, D., Kastelic, V., Carafa, M.M., Esposito, C., Milillo, P. & Di Lorenzo, C., 2019. Gravity versus tectonics: the case of 2016 Amatrice and Norcia (Central Italy) earthquakes surface coseismic fractures, *J. geophys. Res.*, **124**(4), 994–1017.
- Dziewonski, A.M., Chou, T.-A. & Woodhouse, J.H., 1981. Determination of earthquake source parameters from waveform data for studies of global and regional seismicity, *J. geophys. Res.*, **86**(B4), 2825–2852.
- D'Agostino, N., Jackson, J.A., Dramis, F. & Funicello, R., 2001. Interactions between mantle upwelling, drainage evolution and active normal faulting: an example from the Central Apennines (Italy), *Geophys. J. Int.*, **147**(2), 475–497.
- D'Arcy, M. *et al.*, 2019. Timing of past glaciation at the Sierra de Aconquija, northwestern Argentina, and throughout the Central Andes, *Quater. Sci. Rev.*, **204**, 37–57.
- Ekström, G., Nettles, M. & Dziewoński, A., 2012. The global CMT project 2004–2010: centroid-moment tensors for 13,017 earthquakes, *Phys. Earth planet. Inter.*, **200**, 1–9.
- Emmerson, B., 2007. The relationship between intraplate earthquakes and temperature, *PhD thesis*, University of Cambridge, Cambridge, UK.
- England, P. & Houseman, G., 1989. Extension during continental convergence, with application to the Tibetan Plateau, *J. geophys. Res.*, **94**(B12), 17561.
- England, P. & McKenzie, D., 1982. A thin viscous sheet model for continental deformation, *Geophys. J. Int.*, **70**(2), 295–321.
- England, P. & Molnar, P., 1997a. Active deformation of Asia: from kinematics to dynamics, *Science*, **278**(5338), 647–650.
- England, P. & Molnar, P., 1997b. The field of crustal velocity in Asia calculated from Quaternary rates of slip on faults, *Geophys. J. Int.*, **130**(3), 551–582.
- England, P.C., Houseman, G.A., Osmaston, M.F. & Ghosh, S., 1988. The mechanics of the Tibetan Plateau [and Discussion], *Phil. Trans. R. Soc. A*, **326**(1589), 301–320.
- Ericksen, G.E., Fernandez Concha, J. & Silgado, E., 1954. The Cusco, Peru, earthquake of May 21 1950, *Bull. seism. Soc. Am.*, **44**(2A), 97–112.
- Fan, G., Wallace, T.C., Beck, S.L. & Chase, C.G., 1996. Gravity anomaly and flexural model: constraints on the structure beneath the Peruvian Andes, *Tectonophysics*, **255**(1–2), 99–109.
- Finocchio, D., Barba, S. & Basili, R., 2016. Slip rate depth distribution for active faults in Central Italy using numerical models, *Tectonophysics*, **687**, 232–244.
- Flesch, L.M., Haines, A.J. & Holt, W.E., 2001. Dynamics of the India-Eurasia collision zone, *J. geophys. Res.*, **106**(B8), 16435–16460.
- Fraser, C.S. & Hanley, H.B., 2005. Bias-compensated RPCs for sensor orientation of high-resolution satellite imagery, *Photogrammet. Eng. Remote Sens.*, **71**(8), 909–915.
- Garzzone, C.N. *et al.*, 2017. Tectonic evolution of the Central Andean Plateau and implications for the growth of plateaus, *Ann. Rev. Earth planet. Sci.*, **45**, 529–559.
- Goldsworthy, M. & Jackson, J.A., 2000. Active normal fault evolution in Greece revealed by geomorphology and drainage patterns, *J. geol. Soc.*, **157**(5), 967–981.
- Gomberg, J. & Sherrod, B., 2014. Crustal earthquake triggering by modern great earthquakes on subduction zone thrusts, *J. geophys. Res.*, **119**(2), 1235–1250.
- Goodman, A.Y., Rodbell, D.T., Seltzer, G.O. & Mark, B.G., 2001. Subdivision of glacial deposits in southeastern Peru based on pedogenic development and radiometric ages, *Quater. Res.*, **56**(1), 31–50.

- Grützner, C., Schneiderwind, S., Papanikolaou, I., Deligiannakis, G., Palikarakis, A. & Reicherter, K., 2016. New constraints on extensional tectonics and seismic hazard in northern Attica, Greece: the case of the Milesi Fault, *Geophys. J. Int.*, **204**(1), 180–199.
- Gubbels, T.L., Isacks, B.L. & Farrar, E., 1993. High-level surfaces, plateau uplift, and foreland development, Bolivian central Andes, *Geology*, **21**(8), 695.
- Haines, A.J. & Holt, W.E., 1993. A procedure for obtaining the complete horizontal motions within zones of distributed deformation from the inversion of strain rate data, *J. geophys. Res.*, **98**(B7), 12 057–12 082.
- Hogg, A.G. et al., 2013. SHCal13 Southern Hemisphere calibration, 0–50,000 years cal BP, *Radiocarbon*, **55**(04), 1889–1903.
- Horton, B.K., Perez, N.D., Fitch, J.D. & Saylor, J.E., 2015. Punctuated shortening and subsidence in the Altiplano Plateau of southern Peru: implications for early Andean mountain building, *Lithosphere*, **7**(2), 117–137.
- Husson, L. & Ricard, Y., 2004. Stress balance above subduction: application to the Andes, *Earth planet. Sci. Lett.*, **222**(3–4), 1037–1050.
- Jackson, J.A., 2002. Strength of the continental lithosphere: time to abandon the jelly sandwich? *GSA Today*, **12**(9), 4.
- Jackson, J.A. & McKenzie, D., 1999. A hectare of fresh striations on the Arkitsa Fault, central Greece, *J. Struct. Geol.*, **21**(1), 1–6.
- Jackson, J.A. & White, N.J., 1989. Normal faulting in the upper continental crust: observations from regions of active extension, *J. Struct. Geol.*, **11**(1–2), 15–36.
- Jay, J.A., Delgado, F.J., Torres, J.L., Pritchard, M.E., Macedo, O. & Aguilar, V., 2015. Deformation and seismicity near Sabancaya volcano, southern Peru, from 2002 to 2015, *Geophys. Res. Lett.*, **42**(8), 2780–2788.
- Jomelli, V. et al., 2014. A major advance of tropical Andean glaciers during the Antarctic cold reversal, *Nature*, **513**(7517), 224–228.
- Kar, N. et al., 2016. Rapid regional surface uplift of the northern Altiplano plateau revealed by multiproxy paleoclimate reconstruction, *Earth planet. Sci. Lett.*, **447**, 33–47.
- Kendrick, E., Bevis, M., Smalley, R. & Brooks, B., 2001. An integrated crustal velocity field for the central Andes, *Geochem. Geophys. Geosyst.*, **2**, doi:10.1029/2001GC000191.
- Kley, J., 1996. Transition from basement-involved to thin-skinned thrusting in the Cordillera Oriental of southern Bolivia, *Tectonics*, **15**(4), 763–775.
- Lamb, S., 2006. Shear stresses on megathrusts: implications for mountain building behind subduction zones, *J. geophys. Res.*, **111**(B7), B07401.
- Lamb, S. & Hoke, L., 1997. Origin of the high plateau in the Central Andes, Bolivia, South America, *J. geophys. Res.*, **102**(4), 623–649.
- Lamb, S.H., 2000. Active deformation in the Bolivian Andes, South America, *J. geophys. Res.*, **105**(B11), 25 627–25 653.
- Lisiecki, L.E. & Raymo, M.E., 2005. A Pliocene-Pleistocene stack of 57 globally distributed benthic $\delta^{18}O$ records, *Paleoceanography*, **20**(1)1–17.
- Mackenzie, D. & Elliott, A., 2017. Untangling tectonic slip from the potentially misleading effects of landform geometry, *Geosphere*, **13**(4), 1310–1328.
- Marsan, D. & Nalbant, S.S., 2005. Methods for measuring seismicity rate changes: a review and a study of how the Mw 7.3 Landers earthquake affected the aftershock sequence of the Mw 6.1 Joshua Tree earthquake, *Pure appl. geophys.*, **162**, 1151–1185.
- Marsh, E.J., Bruno, M.C., Fritz, S.C., Baker, P., Capriles, J.M. & Hastorf, C.A., 2018. IntCal, SHCal, or a mixed curve? Choosing a ^{14}C calibration curve for archaeological and paleoenvironmental records from tropical South America, *Radiocarbon*, **60**(03), 925–940.
- Ma, Y. & Clayton, R.W., 2014. The crust and uppermost mantle structure of Southern Peru from ambient noise and earthquake surface wave analysis, *Earth planet. Sci. Lett.*, **395**, 61–70.
- Mercer, J.H. & Palacios, M.O., 1977. Radiocarbon dating of the last glaciation in Peru, *Geology*, **5**(10), 600.
- Mercier, J.L., Sebrier, M., Lavenu, A., Cabrera, J., Bellier, O., Dumont, J.-F. & Machrare, J., 1992. Changes in the tectonic regime above a subduction zone of Andean type: the Andes of Peru and Bolivia during the Pliocene-Pleistocene, *J. geophys. Res.*, **97**(B8), 11945.
- Miller, D.J. & Dunne, T., 1996. Topographic perturbations of regional stresses and consequent bedrock fracturing, *J. geophys. Res.*, **101**(B11), 25 523–25 536.
- Molnar, P., 1988. Continental tectonics in the aftermath of plate tectonics, *Nature*, **335**(6186), 131–137.
- Molnar, P. & Lyon-Caen, H., 1988. Some simple physical aspects of the support, structure, and evolution of mountain belts, in *GSA Special Papers Processes in Continental Lithospheric Deformation*, **218**, pp. 179–208, Geological Society of America.
- Mouslopoulou, V., Walsh, J.J. & Nicol, A., 2009. Fault displacement rates on a range of timescales, *Earth planet. Sci. Lett.*, **278**(3–4), 186–197.
- Oncken, O., Boutelier, D., Dresen, G. & Schemmann, K., 2012. Strain accumulation controls failure of a plate boundary zone: linking deformation of the Central Andes and lithosphere mechanics, *Geochem. Geophys. Geosyst.*, **13**(12), doi:10.1029/2012GC004280.
- Penney, C. et al., 2017. Megathrust and accretionary wedge properties and behaviour in the Makran subduction zone, *Geophys. J. Int.*, **209**(3), 1800–1830.
- Perez, N., Horton, B., McQuarrie, N., Stubner, K. & Ehlers, T., 2016a. Andean shortening, inversion and exhumation associated with thin- and thick-skinned deformation in southern Peru, *Geol. Mag.*, **153**(5–6), 1013–1041.
- Perez, N.D. & Horton, B.K., 2014. Oligocene-miocene deformational and depositional history of the andean hinterland basin in the Northern Altiplano Plateau, Southern Peru, *Tectonics*, **33**(9), 1819–1847.
- Perez, N.D., Horton, B.K. & Carlotto, V., 2016b. Structural inheritance and selective reactivation in the central Andes: cenozoic deformation guided by pre-Andean structures in southern Peru, *Tectonophysics*, **671**, 264–280.
- Placzek, C.J., Quade, J. & Patchett, P.J., 2013. A 130ka reconstruction of rainfall on the Bolivian Altiplano, *Earth planet. Sci. Lett.*, **363**, 97–108.
- Pritchard, M.E., Norabuena, E.O., Ji, C., Boroschek, R., Comte, D., Simons, M., Dixon, T.H. & Rosen, P.A., 2007. Geodetic, teleseismic, and strong motion constraints on slip from recent southern Peru subduction zone earthquakes, *J. geophys. Res.*, **112**(B3), B03307.
- Ranalli, G., 1995. *Rheology of the Earth*, Chapman & Hall.
- Roberts, G.P., 1996. Variation in fault-slip directions along active and segmented normal fault systems, *J. Struct. Geol.*, **18**(6), 835–845.
- Rodbell, D.T., Smith, J.A. & Mark, B.G., 2009. Glaciation in the Andes during the Lateglacial and Holocene, *Quater. Sci. Rev.*, **28**(21–22), 2165–2212.
- Rossell, L., 2018. Estudio Morfotectónico y Paleosísmico de las Fallas Tambomachay y Qoricocha, Implicancia en el Peligro Sísmico de la Región Cusco, *Masters thesis*, Universidad Nacional de San Antonio Abad del Cusco.
- Saillard, M., Audin, L., Rousset, B., Avouac, J.P., Chlieh, M., Hall, S.R., Husson, L. & Farber, D.L., 2017. From the seismic cycle to long-term deformation: linking seismic coupling and Quaternary coastal geomorphology along the Andean megathrust, *Tectonics*, **36**(2), 241–256.
- Schoenbohm, L.M. & Strecker, M.R., 2009. Normal faulting along the southern margin of the Puna Plateau, northwest Argentina, *Tectonics*, **28**(5), TC5008.
- Seltzer, G.O., 1990. Recent glacial history and paleoclimate of the Peruvian-Bolivian Andes, *Quater. Sci. Rev.*, **9**(2–3), 137–152.
- Silgado, E., 1978. Historia de los Sismos Mas Notables Ocurridos en el Peru (1513-1974), Technical report, Instituto de Geología y Minería, Lima.
- Smith, J.A., Seltzer, G.O., Rodbell, D.T. & Klein, A.G., 2005. Regional synthesis of last glacial maximum snowlines in the tropical Andes, South America, *Quater. Int.*, **138–139**, 145–167.
- Smith, W.H.F. & Wessel, P., 1990. Gridding with continuous curvature splines in tension, *Geophysics*, **55**(3), 193–305.
- Suarez, G., Molnar, P. & Burchfiel, B.C., 1983. Seismicity, fault plane solutions, depth of faulting, and active tectonics of the Andes of Peru, Ecuador, and southern Colombia, *J. geophys. Res.*, **88**(B12), 10 403–10 428.
- Sébrier, M., Mercier, J.L., Mégard, F., Laubacher, G. & Carey-Gailhardis, E., 1985. Quaternary normal and reverse faulting and the state of stress in the central Andes of south Peru, *Tectonics*, **4**(7), 739–780.
- Talebian, M., Copley, A.C., Fattahi, M., Ghorashi, M., Jackson, J.A., Nazari, H., Sloan, R.A. & Walker, R.T., 2016. Active faulting within a megacity:

- the geometry and slip rate of the Pardisan thrust in central Tehran, Iran, *Geophys. J. Int.*, **207**(3), 1688–1699.
- Thompson, S.C., Weldon, R.J., Rubin, C.M., Abdrakhmatov, K., Molnar, P. & Berger, G.W., 2002. Late Quaternary slip rates across the central Tien Shan, Kyrgyzstan, central Asia, *J. geophys. Res.*, **107**(B9), 7–32.
- Turcotte, D.L. & Schubert, G., 2002. *Geodynamics*, Cambridge University Press.
- Villegas-Lanza, J.C., Chlieh, M., Cavalié, O., Tavera, H., Baby, P., Chire-Chira, J. & Nocquet, J.M., 2016. Active tectonics of Peru: Heterogeneous interseismic coupling along the Nazca megathrust, rigid motion of the Peruvian Sliver, and Subandean shortening accommodation, *J. geophys. Res.*, **121**(10), 7371–7394.
- Walker, R. & Jackson, J., 2004. Active tectonics and late Cenozoic strain distribution in central and eastern Iran, *Tectonics*, **23**(5), TC5010.
- Wang, K., 2000. Stress-strain 'paradox', plate coupling, and forearc seismicity at the Cascadia and Nankai subduction zones, *Tectonophysics*, **319**(4), 321–338.
- Wang, K. & Dixon, T., 2004. "Coupling" semantics and science in earthquake research, *EOS, Trans. Am. Geophys. Un.*, **85**(18), 180–181.
- Wang, K. & He, J., 1999. Mechanics of low-stress forearcs: Nankai and Cascadia, *J. geophys. Res.*, **104**(B7), 15 191–15 205.
- Ward, D.J., Cesta, J.M., Galewsky, J. & Sagredo, E., 2015. Late pleistocene glaciations of the arid subtropical Andes and new results from the Chajnantor Plateau, northern Chile, *Quater. Sci. Rev.*, **128**, 98–116.
- Wells, D.L. & Coppersmith, K.J., 1994. New empirical relationships among magnitude, rupture length, rupture width, rupture area, and surface displacement, *Bull. seism. Soc. Am.*, **84**(4), 974–1002.
- Westoby, M., Brasington, J., Glasser, N., Hambrey, M. & Reynolds, J., 2012. Structure-from-Motion' photogrammetry: a low-cost, effective tool for geoscience applications, *Geomorphology*, **179**, 300–314.
- Wimpenny, S., Copley, A., Benavente Escobar, C.L. & Aguirre, E., 2018. Extension and dynamics of the Andes inferred from the 2016 Parina (Huarichancara) Earthquake, *J. geophys. Res.*, **123**(9), 8198–8228.
- Zhou, Y., Parsons, B., Elliott, J.R., Barisin, I. & Walker, R.T., 2015. Assessing the ability of Pleiades stereo imagery to determine height changes in earthquakes: a case study for the El Mayor-Cucapah epicentral area, *J. geophys. Res.*, **120**(12), 8793–8808.

SUPPORTING INFORMATION

Supplementary data are available at [GJI](https://doi.org/10.1002/gji) online.

Figure S1. A compilation of moraine ages from the Andes. (a) Distribution of dated moraines from the high Andes. Dots in light blue are a subset of the most well-constrained moraine ages from the Central Andes and the grey dots are all the dated moraines. (b) Cumulative density function plot of moraine ages plotted against the LR04 benthic $\delta^{18}\text{O}$ stack of Lisiecki & Raymo (2005). The grey bar represents the timing of the global Last Glacial Maximum from Clark *et al.* (2009), whilst the blue bar covers the full range of well-dated moraines from D'Arcy *et al.* (2019). Inset is the distribution of moraine ages as a function of their elevation, showing that most moraines occur >3500 m. The older moraines are restricted to >4000 m.

Figure S2. Benchmark test for the elevations of the barometric altimeter. Red dots are $h_p - h_G + c_1$ where h_p is the height measured

by the Pleiades DEM, h_G is the height measured by the barometric altimeter and c_1 is some constant offset between the two data sets. There is a strong linear correlation between the relative height change measurements of ~ 0.15 . The root mean square deviation between the measurements when only a constant offset has been removed is 5.5 m. The light blue dots are $h_p - h_G + (c_2 h_p + c_1)$, where both a linear ramp and a constant offset have been removed. The root-mean-square deviation once a linear ramp has been removed is 1.34 m.

Figure S3. Exposed lacustrine marls near Lake Langui-Layo at Locality M2. (a) Photograph of the section. The lower part of the section consists of metre-scale cross-bedded sands and gravel lenses dipping towards the current lake shore, which were probably deposited by east-to-west flowing river systems entering the lake basin. The sands and gravels are overlain by a ~ 1 -m-thick conglomerate horizon, followed by the 3-m-thick lower marl deposit. Above the lower marl layer is another series of cross-bedded sands and gravels, which are capped by the upper marl layer near the top of the exposure. The stratigraphy is interpreted to reflect lacustrine deposits now exposed 50–60 m above the current lake level. An interpreted sketch of (a) is shown in (b).

Figure S4. DEM and scarp height measurements on the Vilacota Fault. (a) Pleiades DEM gridded at 2×2 m resolution (see text for method of construction). Red lines mark 5-m-wide swath profiles extracted through the DEM point cloud across the scarps, numbered 1–15. Inset is a Digital Globe satellite image from Google Earth of the western section of the scarps and a field photograph of the eastern section of the scarps. (b) Along-strike variability in the scarp vertical offsets. (c–f) Examples of swath profiles through the point cloud with lines fitted above (red) and below (blue) the scarp, and the offset measured at the foot of the scarp. The x -axis has ticks every 50 m.

Figure S5. High-resolution DEMs of the Parina Fault covering parts of the fault that ruptured in the 2016 M_w 6.1 earthquake. (a) Hillshade of the DEM illuminated from the NE along the northern section of the fault, ~ 1 km east of Lake Saguanani. Topographic profiles across the surface scarps are shown adjacent. (b) Hillshade DEM of the southern section of the fault, south of Parina village. The paleoseismic trenches will be discussed in a forthcoming study. (c) Field photograph of the surface ruptures from the 2016 Parina earthquake that are perched up-slope of a ~ 3 -m-high topographic step. Robust surface offsets are not clear along the southern section of the Parina Fault.

Figure S6. Fault slip vectors measured in the field from faults discussed in this study and well-constrained earthquake mechanisms on the margins of the range. All slip vectors show the azimuth of motion of the western side of the fault relative to the eastern side. Thin, black, solid lines are faults and thin, dashed lines are folds, both mapped in this study.

Please note: Oxford University Press is not responsible for the content or functionality of any supporting materials supplied by the authors. Any queries (other than missing material) should be directed to the corresponding author for the paper.