



Deposited via The University of Sheffield.

White Rose Research Online URL for this paper:

<https://eprints.whiterose.ac.uk/id/eprint/191586/>

Version: Published Version

---

**Article:**

Yu, J., Balaji, B., Tinajero, M. et al. (2022) White rice, brown rice and the risk of type 2 diabetes: a systematic review and meta-analysis. *BMJ Open*, 12 (9). e065426. ISSN: 2044-6055

<https://doi.org/10.1136/bmjopen-2022-065426>

---

**Reuse**

This article is distributed under the terms of the Creative Commons Attribution-NonCommercial (CC BY-NC) licence. This licence allows you to remix, tweak, and build upon this work non-commercially, and any new works must also acknowledge the authors and be non-commercial. You don't have to license any derivative works on the same terms. More information and the full terms of the licence here:

<https://creativecommons.org/licenses/>

**Takedown**

If you consider content in White Rose Research Online to be in breach of UK law, please notify us by emailing [eprints@whiterose.ac.uk](mailto:eprints@whiterose.ac.uk) including the URL of the record and the reason for the withdrawal request.

# BMJ Open White rice, brown rice and the risk of type 2 diabetes: a systematic review and meta-analysis

Jiayue Yu,<sup>1</sup> Bhavadharini Balaji,<sup>2</sup> Maria Tinajero,<sup>3</sup> Sarah Jarvis,<sup>3</sup> Tauseef Khan,<sup>3</sup> Sudha Vasudevan,<sup>4</sup> Viren Ranawana,<sup>5</sup> Amudha Poobalan,<sup>6</sup> Shilpa Bhupathiraju,<sup>7,8</sup> Qi Sun,<sup>8</sup> Walter Willett,<sup>8</sup> Frank B Hu,<sup>8</sup> David J A Jenkins <sup>3,9</sup>, Viswanathan Mohan,<sup>10</sup> Vasanti S Malik <sup>3,8</sup>

**To cite:** Yu J, Balaji B, Tinajero M, *et al*. White rice, brown rice and the risk of type 2 diabetes: a systematic review and meta-analysis. *BMJ Open* 2022;**12**:e065426. doi:10.1136/bmjopen-2022-065426

► Prepublication history and additional supplemental material for this paper are available online. To view these files, please visit the journal online (<http://dx.doi.org/10.1136/bmjopen-2022-065426>).

Received 03 June 2022  
Accepted 05 August 2022



© Author(s) (or their employer(s)) 2022. Re-use permitted under CC BY-NC. No commercial re-use. See rights and permissions. Published by BMJ.

For numbered affiliations see end of article.

## Correspondence to

Vasanti S Malik;  
[vasanti.malik@utoronto.ca](mailto:vasanti.malik@utoronto.ca)

## ABSTRACT

**Objective** Intake of white rice has been associated with elevated risk for type 2 diabetes (T2D), while studies on brown rice are conflicting. To inform dietary guidance, we synthesised the evidence on white rice and brown rice with T2D risk.

**Design** Systematic review and meta-analysis.

**Data sources** PubMed, EMBASE and Cochrane databases were searched through November 2021.

**Eligibility criteria** Prospective cohort studies of white and brown rice intake on T2D risk ( $\geq 1$  year), and randomised controlled trials (RCTs) comparing brown rice with white rice on cardiometabolic risk factors ( $\geq 2$  weeks).

**Data extraction and synthesis** Data were extracted by the primary reviewer and two additional reviewers. Meta-analyses were conducted using random-effects models and reporting followed the Preferred Reporting Items for Systematic Reviews and Meta-Analyses guidelines. Risk of bias was assessed using the Newcastle Ottawa Scale for prospective cohort studies and the Cochrane Risk of Bias Tool for RCTs. Strength of the meta-evidence was assessed using NutriGrade.

**Results** Nineteen articles were included: 8 cohort studies providing 18 estimates (white rice: 15 estimates, 25 956 cases,  $n=577\,426$ ; brown rice: 3 estimates, 10 507 cases,  $n=197\,228$ ) and 11 RCTs ( $n=1034$ ). In cohort studies, white rice was associated with higher risk of T2D (pooled RR, 1.16; 95% CI: 1.02 to 1.32) comparing extreme categories. At intakes above  $\sim 300$  g/day, a dose-response was observed (each 158 g/day serving was associated with 13% (11%–15%) higher risk of T2D). Intake of brown rice was associated with lower risk of T2D (pooled RR, 0.89; 95% CI: 0.81 to 0.97) comparing extreme categories. Each 50 g/day serving of brown rice was associated with 13% (6%–20%) lower risk of T2D. Cohort studies were considered to be of good or fair quality. RCTs showed an increase in high-density lipoprotein-cholesterol (0.06 mmol/L; 0.00 to 0.11 mmol/L) in the brown compared with white rice group. No other significant differences in risk factors were observed. The majority of RCTs were found to have some concern for risk of bias. Overall strength of the meta-evidence was moderate for cohort studies and moderate and low for RCTs.

**Conclusion** Intake of white rice was associated with higher risk of T2D, while intake of brown rice was associated with lower risk. Findings from substitution trials on cardiometabolic risk factors were inconsistent.

## STRENGTHS AND LIMITATIONS OF THIS STUDY

- ⇒ This systematic review and meta-analysis on rice intake and risk of type 2 diabetes (T2D) is the most comprehensive evidence synthesis to date that includes findings from both prospective cohort studies of hard endpoints and trials of intermediate cardiometabolic risk factors.
- ⇒ Key strengths include the large sample size and long duration of follow-up of cohort studies from different parts of the world, use of systematic methods including risk of bias and evidence grading specific for nutrition research, categorical and dose-response analyses and a number of sensitivity analyses to assess the robustness of the results.
- ⇒ Only three cohorts with data on brown rice were included in the meta-analysis, all of which were conducted among US health professionals, which limits the generalisability of the findings.
- ⇒ The overall strength of the meta-evidence from cohort studies was considered moderate and moderate and low for randomised controlled trials, thus the assessment of rice intake on T2D risk relies on observational studies and trials of limited quality on intermediate risk factors.

**PROSPERO registration number** CRD42020158466.

## INTRODUCTION

The prevalence of type 2 diabetes (T2D) has continued to increase worldwide, especially in low-income and middle-income countries (LMICs),<sup>1</sup> where economic development and urbanisation are fuelling these trends.<sup>2</sup> Since rice is a staple food in many cultures and is predominant in most Asian diets, it is hypothesised that improving diet quality by replacing white rice with brown rice could play an important role in the prevention of T2D.<sup>3</sup> White rice is a product of refining and polishing of the intact rice grain with the removal of the outer bran and germ layers, leaving the starchy endosperm as the primary

component. In contrast, brown rice, an intact whole grain, retains the bran and germ along with the fibre, vitamins and minerals contained in these layers of the grain. Dietary fibre and certain micronutrients such as magnesium found in the intact rice grain have been independently associated with lower risk of T2D.<sup>4</sup> Brown rice also tends to have a lower glycaemic index (GI) compared with white rice, due to a higher fibre content and slower rate of absorption, although variability in GI exists across rice strains.<sup>5 6</sup>

Epidemiological studies have linked intake of refined grains, including white rice, to a higher risk of T2D, while intake of whole grains, such as brown rice, has been linked to lower risk.<sup>7-9</sup> Previous meta-analyses of cohort studies have shown positive associations between white rice intake and the risk of T2D particularly in Asian populations.<sup>10 11</sup> Since these publications, a number of new studies have been published, providing data from additional world regions. In contrast to cohort studies, findings from randomised controlled trials (RCTs) comparing white rice with brown rice have been inconsistent. Two recent meta-analyses of RCTs found a benefit of brown rice compared with white rice on body weight but discrepant results on waist circumference and lipid parameters.<sup>12 13</sup> However, these meta-analyses combined studies conducted among participants with and without T2D, which may have differential effects on macronutrient metabolism. To provide a current synthesis of the evidence, we conducted an updated systematic review and meta-analysis of cohort studies that examined intake of white rice and risk of T2D including a dose-response analysis. We also conducted separate meta-analyses on cohort studies of brown rice and risk of T2D and on RCTs that compared effects of brown rice and white rice on intermediate cardiometabolic risk factors among participants without T2D, in order to provide a comprehensive assessment of rice consumption and T2D risk.

## METHODS

### Patient and public involvement

No patient involved.

### Literature search

To assess the relationship between rice intake and the risk of T2D, we conducted three a priori separate meta-analyses: (1) prospective cohort studies of white rice intake and risk of T2D; (2) prospective cohort studies of brown rice intake and risk of T2D and (3) RCTs comparing effects of brown rice and white rice intakes on risk factors for T2D. Relevant articles were identified by searching electronic databases PubMed, EMBASE and the Cochrane library from their respective index dates to November 2021. The search strategy incorporated Medical Subject Headings, and Title/Abstract (tiab) terms for all three databases with search/key terms related to rice and risk of T2D and T2D risk factors or biomarkers (online supplemental table 1). Additional

articles were identified from reference lists of included studies and relevant reviews.

### Study selection

Studies were considered for inclusion in our meta-analysis based on the following criteria: (1) prospective cohort studies with at least 1 year of follow-up or RCTs with at least 2 weeks of intervention among healthy human participants aged  $\geq 18$  years without a diagnosis of T2D at baseline; (2) specified brown rice or white rice (or polished rice) intake as the exposure in cohort studies or comparison of brown rice versus white rice as the intervention in RCTs; (3) reported multivariable-adjusted relative risks (RR) with 95% CI for the association between white or brown rice intake and risk of T2D from cohort studies or the difference in changes of at least one biomarker of cardiometabolic risk (fasting blood glucose (FBG), HbA1c, HOMA-IR, triglycerides, total cholesterol, low-density lipoprotein (LDL)-cholesterol, high-density lipoprotein (HDL)-cholesterol, waist circumference, systolic blood pressure and diastolic blood pressure) between intervention and control groups from RCTs. We excluded articles that were not original research (ie, reviews, letters, conference proceedings or commentaries) or studies that combined rice intake with other dietary factors or lifestyle factor as a composite exposure. We did not consider case-control, cross-sectional or ecologic studies or the grey literature for inclusion or studies that were conducted in animal models. No language restrictions were applied. Titles and abstracts of identified studies were screened by the primary reviewer (JY), and potentially relevant articles were selected for full-text review, which was performed independently by the primary reviewer and two additional reviewers (SJ and MT). Any discrepancies were resolved through discussion with an additional author (VSM).

### Data extraction

For each article identified, we extracted information on the following: study characteristics (authors, publication year, type of study, region/country, number of participants and duration); participant characteristics (sex, age, baseline weight/health status); type of rice consumed; quantity of rice consumed (g/d); cooking method; type of dietary assessment (eg, Food Frequency Questionnaires, 24-hour diet recall); RCT design (crossover, parallel and cluster); intervention and control modality and analysis strategy (statistical models and covariates). For prospective cohort studies, we extracted multivariable adjusted RRs and 95% CIs and confounder information. For RCTs, we extracted means and SEs of between-group difference in biomarkers of cardiometabolic risk (FBG, HbA1c, HOMA-IR, triglycerides, total cholesterol, LDL-cholesterol, HDL cholesterol, waist circumference, systolic blood pressure and diastolic blood pressure) from baseline to the end of follow-up. If a trial did not report the SE for the measurement of change, we imputed this value by using the correlation coefficient method referenced in

the Cochrane Handbook for Systematic Reviews of Interventions.<sup>14</sup> For the trial by Ren *et al*,<sup>15</sup> which reported on four different brown rice interventions with different rice drying processes, we extracted data for the comparison of standard brown rice with polished white rice, which is most consistent with the other studies in this meta-analysis.

### Data synthesis and analysis

Random-effects models were used to provide summary estimates for all analyses, however fixed-effects models were also calculated, which is the preferred method when fewer than five estimates are available for analysis.<sup>16</sup> For meta-analyses of prospective cohort studies of white rice and brown rice, the summary RRs were estimated along with corresponding 95% CIs, comparing extreme categories of intake. For RCTs, the mean between-group difference in biomarkers of T2D risk with SE was estimated with the brown rice group considered as the intervention and white rice group, the control. The  $I^2$  statistic and  $Q$ -statistic with a corresponding  $p$ -value were used to assess heterogeneity between the included studies. In general, an  $I^2$  value below 30% represented low heterogeneity; between 30% and 60% represented moderate heterogeneity and greater than 70% represented significant heterogeneity.<sup>14</sup> To further explore potential sources of heterogeneity among cohort studies, meta-regression and subgroup analyses by sex, age, duration of follow-up, geographic region and adjustment for diet quality (as defined in individual studies as adjustment for key dietary factors or diet quality score) were conducted. The subgroups for geographic region were consistent with those reported in the Prospective Urban Rural Epidemiology (PURE) study, published by Bhavadharini *et al*,<sup>17</sup> as follows: China, South Asia (India, Pakistan and Bangladesh) and the rest of the world. The study by Seah *et al* which included Chinese adults in Singapore was included with studies in China.<sup>18</sup> We also conducted an additional subgroup analysis according to whether rice is typically consumed as a staple food in a given country. To assess the influence of individual cohort studies on the results, we conducted sensitivity analysis by systematically omitting one study at a time and recalculating the summary estimate. Fixed-effects cubic spline models were used to assess the dose–response for cohort studies evaluating white rice intake (per 1 serving, ie, 158 g increment) and fixed-effects fractional polynomial models were used to assess the dose–response for brown rice intake (per 50 g increment), given the smaller sample size and lower intake level across studies. A serving size of 50 g/d for brown rice was used to reflect real-world intake levels. For studies that did not report person-years, these values were calculated by multiplying the number of participants in each category by years of follow-up. For the study by Hodge *et al*,<sup>19</sup> which did not report the number of cases per category, these were calculated using the reported RR and the following formula  $\frac{100 \times RR}{\text{sum of } 100 \times RR} \times \text{total cases}$ .<sup>20</sup> In this study, since the number of participants per category

was not reported, person years were calculated by taking the total number of person-years divided by four as the dose category was reported in quartiles.

The assessment of individual study quality was done using the Newcastle Ottawa Scale (NOS) for prospective cohort studies and the Cochrane Risk of Bias Tool for randomised trials (RoB-2) for RCTs. The overall strength of our meta-analysis was assessed using the NutriGrade scoring system, which was specifically designed to assess meta-evidence in nutrition research.<sup>21</sup> NutriGrade is based on seven criteria (eight criteria for cohorts) with an overall score ranging from 0 to 10: risk of bias, precision, heterogeneity, directness, publication bias, funding bias and study design (for RCTs), effect size and dose–response (for cohorts). An overall score below four denotes evidence of very low quality. Scores of 4–5.99 and 6–7.99 denote low and moderate quality evidence, respectively. A score of 8 or higher denotes high quality meta-evidence. For meta-evidence from RCTs, we applied NutriGrade to outcomes that were measured in all included studies. Visual inspection of Funnel plots and Begg's and Egger's tests were used to assess potential publication bias. All analyses were performed using Stata V.16.0 (StataCorp).

## RESULTS

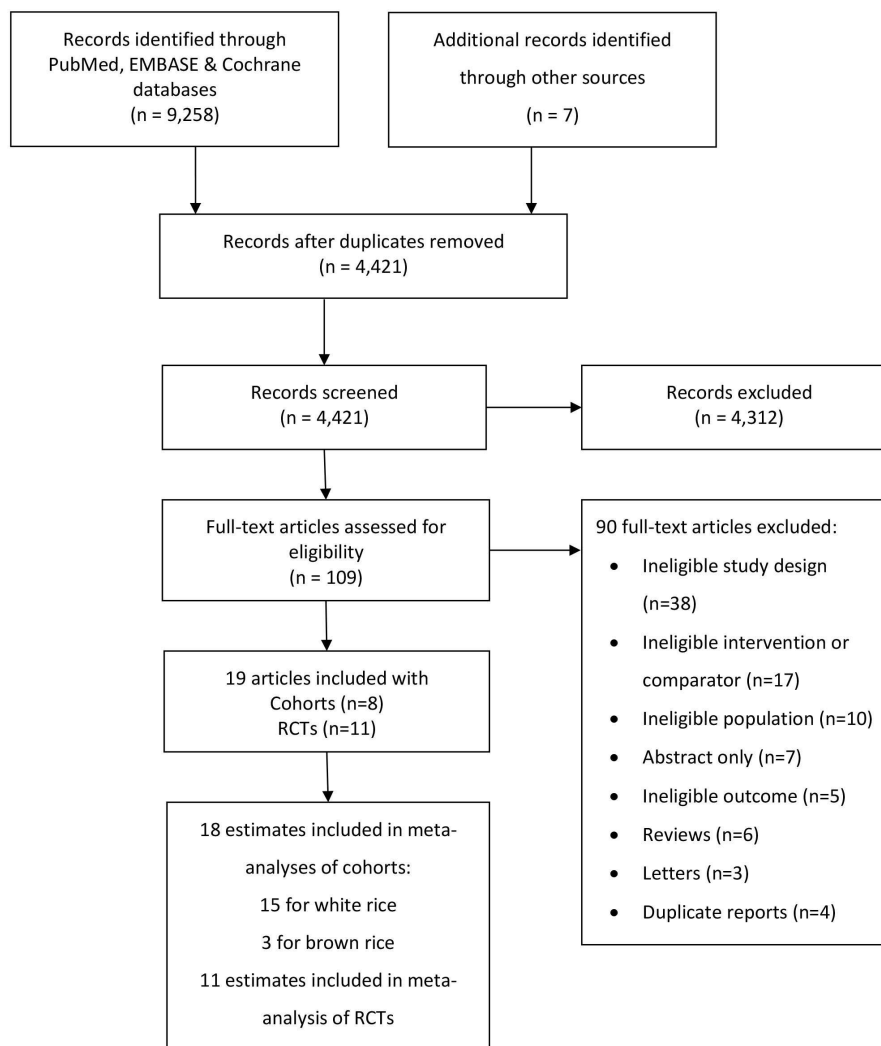
### Literature search

Our literature search yielded 9258 articles, with 3098 from PubMed, 4390 from EMBASE, 1770 from Cochrane and 7 external sources (figure 1). After removing duplicates, the remaining 4421 articles were screened according to our inclusion criteria, resulting in 109 articles for full-text review. We further excluded 4 duplicates, 6 reviews, 3 letters, 70 articles that did not meet our inclusion criteria (ineligible study design, intervention/comparator, population or outcome) and 7 articles without a full-text source (ie, conference abstracts). After final exclusions, 19 original articles were included in our meta-analysis, 8 of which were prospective cohort studies<sup>8 17–19 22–25</sup> and 11 RCTs.<sup>15 26–35</sup> For cohort studies that reported sex-specific estimates, the individual estimates were considered separately in the meta-analysis, yielding a total of 18 estimates (15 for white rice and 3 for brown rice) for inclusion in the meta-analysis.

### Study characteristics

Characteristics of the prospective cohort studies of white rice and brown rice included in the meta-analysis are shown in table 1.

Studies represented multiple geographic regions including China, South Asia, the Middle East, Europe, Australia and the USA. There was a total of 577 426 participants from eight prospective cohort studies (providing 15 estimates) of white rice intake with a mean duration of 8.8 years (1–22 years), during which, 25 956 cases of T2D were reported. The 3 cohorts of brown rice intake included 197 228 participants with 14–22 years of follow-up and 10 507 cases of T2D from one study of US health



**Figure 1** Literature search and study selection. RCTs, randomised controlled trials.

professionals.<sup>8</sup> For all studies, participants ranged in age from 18 to 87 years, the majority of whom were women. Food Frequency Questionnaires (FFQs) were used exclusively for dietary assessment and most of the cohort studies were considered to be of good or fair quality with a NOS score above 5, except for studies by Nanri *et al*<sup>23</sup> and Soriguer *et al*,<sup>24</sup> which were considered poor quality due to downgrades for high attrition, poor comparability and inadequate control for confounding. Key covariates, such as age, sex, body mass index, physical activity and total energy intake, were adjusted in all studies, except for the study by Soriguer *et al*, which adjusted for age, sex, glucose metabolism and carbohydrate intake<sup>24</sup> (online supplemental table 2). Characteristics of RCTs included in the meta-analysis are shown in table 2.

There was a total of 1034 participants and intervention periods ranged from 1 month (4 weeks) to 24 months (104 weeks). Studies by Kazemzadeh *et al*<sup>28</sup> and Malik *et al*<sup>30</sup> used a crossover design with a 2-week washout period and the study by Shimabukuro *et al*<sup>34</sup> used a crossover design with no washout, while the other studies were parallel trials. Eight studies specified the type of rice or processing method used in the intervention.<sup>15 29–33</sup> Araki

*et al* used partially abraded brown rice (PABR) compared with white rice<sup>29</sup> and Malik *et al* used parboiled brown rice compared with non-parboiled white rice of the same strain (BPT5204).<sup>30</sup> Geng *et al*,<sup>32</sup> Mai *et al*<sup>31</sup> and Bui *et al*<sup>35</sup> used pregerminated brown rice as the intervention compared with white rice. Kuroda *et al* used ultra-high hydrostatic pressurising brown rice compared with white rice<sup>33</sup> and Ren *et al* and Shimabukuro *et al* used the Japonica cultivar (Suijing 18 paddy rice) with the husk removed compared with polished white rice of the same strain.<sup>15 34</sup> Studies by Ren *et al*<sup>15</sup> and Bui *et al*<sup>35</sup> were considered to have a high risk of bias, while studies by Zhang *et al*<sup>26</sup> and by Mai *et al*<sup>31</sup> were considered to have a low risk of bias. The remaining studies were found to have some concern for risk of bias, primarily due to the randomisation process and intended intervention. Details of the outcomes from the RCTs are shown in online supplemental table 3.

### White rice intake and risk of type 2 diabetes

As shown in figure 2, intake of white rice was associated with higher risk of T2D, with a pooled RR of 1.16 (1.02–1.32) comparing extreme categories. Significant heterogeneity was observed among the estimates, with an I<sup>2</sup> value of

**Table 1** Characteristics of prospective cohort studies of white rice and brown rice intake and risk of type 2 diabetes (T2D)

Author	Location and study population	Participants (n, sex, age)	Cases	Duration (years)	Outcome assessment	Newcastle-Ottawa Scale*
White rice						
Hodge <i>et al</i> 2004 <sup>19</sup>	Australia. Melbourne Collaborative Cohort Study (MCCS)	31 641; mixed; aged 40–69 years	365	4	Self-reported, confirmed by clinician	Good (3★; 1★; 3★)
Villegas <i>et al</i> 2007 <sup>22</sup>	China. Shanghai Women's Health Study (SWHS)	64 227; female; aged 40–70 years	1608	4.6	Self-reported	Good (3★; 2★; 2★)
Nanri <i>et al</i> 2010 <sup>23</sup>	Japan. Japan Public Health Center-based Prospective Study (JPHC)	25 666; male; aged 40–69 years	625	5	Self-reported, confirmed by medical records	Poor (3★; 2★; 1★)
Nanri <i>et al</i> 2010 <sup>23</sup>	Japan. Japan Public Health Center-based Prospective Study (JPHC)	33 622; female; aged 40–69 years	478	5	Same as above	Poor (3★; 2★; 1★)
Sun <i>et al</i> 2010 <sup>8</sup>	USA. Health Professionals Follow-up Study (HPFS)	39 765; male; aged 32–87 years	2648	20	Self-reported, confirmed by questionnaire	Fair (2★; 1★; 2★)
Sun <i>et al</i> 2010 <sup>8</sup>	USA. Nurses' Health Study (NHS)	69 120; female; aged 37–65 years	5500	22	Same as above	Fair (2★; 2★; 2★)
Sun <i>et al</i> 2010 <sup>8</sup>	USA. Nurses' Health Study II (NHS II)	88 343; female aged 26–45 years	2359	14	Same as above	Fair (2★; 2★; 2★)
Soriguer <i>et al</i> 2013 <sup>24</sup>	Spain. Pizarra Study (PS)	605; mixed; aged 18–65 years	54	6	Identified via fasting blood glucose and OGTT	Poor (3★; 0★; 2★)
Golozar <i>et al</i> 2017 <sup>25</sup>	Iran. Golestan Cohort Study (GCS)	4754; female; aged 40–87 years	902†	1–5	Identified via fasting blood glucose or medication use	Good (3★; 2★; 2★)
Golozar <i>et al</i> 2017 <sup>25</sup>	Iran. Golestan Cohort Study (GCS)	4475; male; aged 40–87 years	902†	1–5	Same as above	Good (3★; 2★; 2★)
Golozar <i>et al</i> 2017 <sup>25</sup>	Iran. Tehran Lipid and Glucose Study (TLGS)	1197; female; aged ≥20 years	81†	1–5	Identified via fasting blood glucose or OGTT or medication use	Good (3★; 2★; 2★)
Golozar <i>et al</i> 2017 <sup>25</sup>	Iran. Tehran Lipid and Glucose Study (TLGS)	976; male; aged ≥20 years	81†	1–5	Same as above	Good (3★; 2★; 2★)
Seah 2018	Chinese living in Singapore. Singapore Chinese Health Study (SCHS)	35 298; female; aged 45–74 years	3012	11	Self-reported, confirmed by follow-up interview and medical assessments	Fair (2★; 1★; 3★)
Seah 2018	Chinese living in Singapore. Singapore Chinese Health Study (SCHS)	45 411; male; aged 45–74 years	2195	11	Same as above	Fair (2★; 1★; 3★)
Bhavadarini <i>et al</i> 2020 <sup>17</sup>	21 countries. Prospective Urban Rural Epidemiology Study (PURE)	132 373; mixed; aged 35–70 years	6129	9.5	Self-reported with >90% confirmed by medical record and/or blood test	Good (3★; 2★; 3★)
Brown rice						
Sun <i>et al</i> 2010 <sup>8</sup>	USA. Health Professionals Follow-up Study (HPFS)	39 765; male; aged 32–87 years	2648	20	Self-reported, confirmed by supplementary questionnaire	Fair (2★; 2★; 3★)
Sun <i>et al</i> 2010 <sup>8</sup>	Nurses' Health Study (NHS)	69 120; female; aged 37–65 years	5500	22	Same as above	Fair (2★; 2★; 3★)
Sun <i>et al</i> 2010 <sup>8</sup>	Nurses' Health Study II (NHS II)	88 343; female; aged 26–45 years	2359	14	Same as above	Fair (2★; 2★; 3★)

Good = (3/4★; 1/2★; 2/3★); fair = (2★; 1/2★; 2/3★); poor = 0/1★ for selection; OR 0★ for comparability; OR 0/1★ for outcome/exposure.

\*Newcastle-Ottawa Scale: the star scores (★) are arranged in the order of selection, comparability and outcome/exposure domains.

†Number of cases by sex was not specified, and the reported numbers are the total number of the cases across both sexes.

OGTT, oral glucose tolerance test.

73%. The fixed-effects model was similar, with a pooled RR of 1.13 (1.06–1.20). Stratified analysis by sex, age, follow-up period, adjustment for diet quality, geographic region and regional rice consumption habits showed some differences in estimates across subgroups (online supplemental figures 1–6). However, none of the differences across subgroups were statistically significant.  $I^2$  values were not materially different in overall estimates compared with stratified results suggesting other potential sources of heterogeneity.

### Brown rice intake and risk of type 2 diabetes

We observed an inverse association between intake of brown rice and the risk of T2D, with a pooled RR of

0.89 (0.81–0.97) comparing extreme categories with an  $I^2$  value of 0% (figure 3). Results from the fixed-effects model were identical.

### Dose–response analysis

The fixed-effects cubic spline for intake of white rice in relation to risk of T2D showed a non-linear relationship between intake of white rice and risk of T2D (p-value for non-linearity < 0.001) at consumption levels below ~300 g/d (cooked weight) (figure 4). At intakes above this threshold, each one serving (158 g cooked weight) increment in white rice intake was associated with a 13% higher risk of T2D (RR: 1.13; 95% CI: 1.11 to 1.15,

**Table 2** Characteristics of RCTs replacing white rice with brown rice on type 2 diabetes (T2D) risk factors

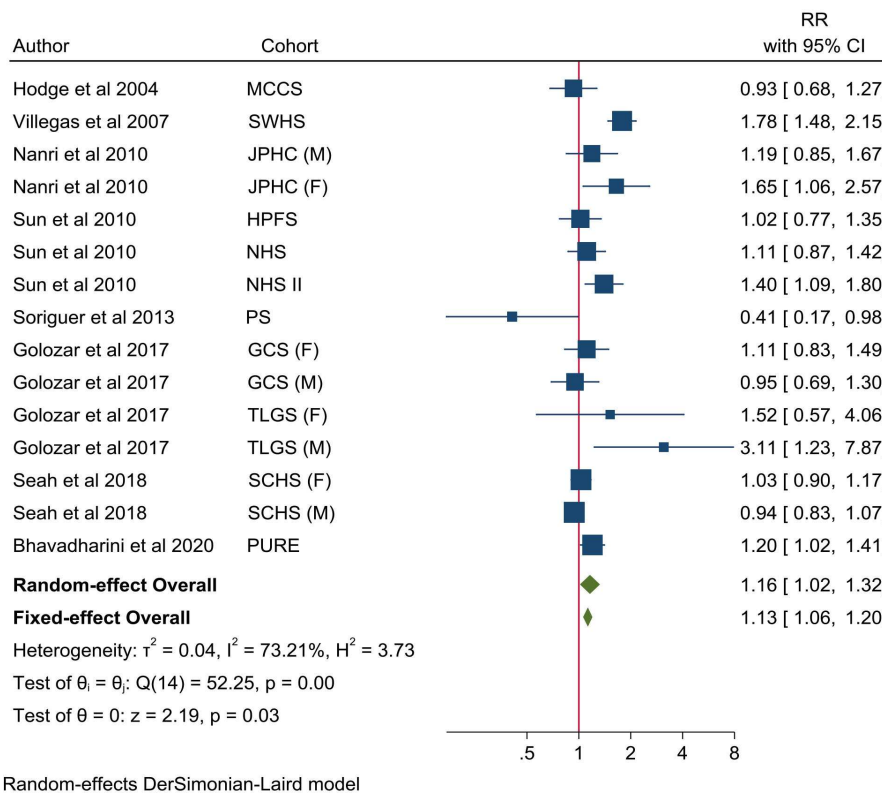
Author	Design	Participants (location, n, % female, age, health status)	Duration (weeks)	Intervention diet	Control diet	Cooking method	Amount consumed	Dietary assessment for adherence	RoB-2*
Zhang <i>et al</i> 2011 <sup>26</sup>	Parallel	Shanghai, China: n=202; %female=47; mean age ~50 year; MetS	16	Cooked BR packed for 225 g/day from Monday to Saturday (n=101)	Cooked WR packed for 225 g/day from Monday to Saturday (n=101)	Steamed under 0.3MPa for ~75 min, with R:W ratios† of 1:1 for WR and 1:1.25 for BR (‡BR soaked for at least 1 hour before cooking)	Ad libitum, and allowed to consume with other staple foods on Sundays	3-day food record	Low risk
Wang <i>et al</i> 2013 <sup>27</sup>	Parallel	Chinese American: n=57; %female=38; prediabetic	12	BR (n=28)	WR (n=29)	Boiled in water for 30 min	Ad libitum based on usual intake	3-day food record	Some concern
Kazemzadeh <i>et al</i> 2014 <sup>28</sup>	Cross-over	Iran: n=40; %female=100; aged 18–50 year; healthy	6	150 g/day cooked BR (n=20)	150 g/day cooked WR (n=20)	Raw rice packaged and provided to participants to prepare at home	150 g/day cooked rice	3-day food record	Some concern
Bui <i>et al</i> 2014 <sup>35</sup>	Parallel	Vietnam: n=60; %female=100; aged 45–65 year; IGT	16	540 g/day PGBR (n=30)	540 g/day WR (n=30)	Not specified	540 g/day with normal activities of daily life without restriction	24-hour diet recall	High risk
Shimabukuro <i>et al</i> 2014 <sup>34</sup>	Cross-over	Japan: n=27; %female=0; age 41 year; MetS	8	150 g/day BR (n=14)	150 g/day WR (n=13)	Not specified	150 g/day with regular dietary intake/exercise habits	Self-recorded compliance	Some concern
Geng <i>et al</i> 2016 <sup>32</sup>	Parallel	Wuxi, China: n=191; %female=49.74; aged 40–70 year; dyslipidaemia	12	150 g/day cooked PGBR (n=94; female=49)	150 g/day cooked WR (n=97; female=47)	Processed and prepared by patent agent	150 g/day without change in dietary habits and lifestyle	Semi-Quantitative Food Frequency Questionnaire (SQFFQ) carried by trained staff	Some concern
Araki <i>et al</i> 2017 <sup>29</sup>	Parallel	Japan: n=41; %female=53.7; aged 40–64 year; prediabetic	12	200 g cooked PABR twice a day (n=20; female=10)	200 g cooked WR twice a day (n=21; female=12)	Steamed under cooking mode for WR, with R:W ratios of 1:1 for WR and 1:2 for PABR	400 g/day with additional ad libitum consumption of staple foods for one daily meal	Brief self-administered Diet History Questionnaire (BDHQ) confirmed by dietician	Some concern
Malik <i>et al</i> 2019 <sup>30</sup>	Cross-over	Chennai, India: n=166; %female=45; aged 25–65 year; overweight	12	Parboiled BR (strain: BPT5204)(n=85)	Non-parboiled WR (strain: BPT5204) (n=81)	Prepared by trained dietitians, and pressure cooked with R:W ratios of 1:2.5 for WR and 1:2 for BR	Two ad libitum meals/day	Direct observation and 24-hour diet recall	Some concern
Kuroda <i>et al</i> 2019 <sup>33</sup>	Parallel	Japan: n=52; %female=51.9; aged ≥65 year; healthy	104	100 g/day UHHPBR (n=27)	100 g/day WR (n=25)	Supplied from the company	100 g/day cooked rice	A general questionnaire on lifestyle, and BDHQ	Some concern
Mai <i>et al</i> 2020 <sup>31</sup>	Parallel	Vietnam: n=80; %female=80; aged 55–70 year; MetS	13	200 g/day PGBR (n=40; female=36)	200 g/day WR (n=40; female=36)	Packaged in a 2 kg capsule per day	200 g/day for 10 days each time without changes in lifestyle and medicine taking	SQFFQ	Low risk
Ren <i>et al</i> 2020 <sup>15</sup>	Parallel	China: n=112; %female=44.6; aged 18–70 year; MetS	4	Cooked BR (n=28)	Cooked polished rice (n=28)	Washed and soaked in clear water with R:W ratio of 1:1.35 for 30 min. Then cooked in an electric cooker for 30 min and kept at temperature for 10 min	100 g rice (50 g sample rice and 50 g polished rice), coupled with 30 g sauced beef, 150 g salad and 50 g eggs	Not specified	High risk

\*RoB-2=risk of bias 2.0.

†R:W ratio=rice-to-water ratio (in weight).

‡Conversion from uncooked rice to cooked rice by multiplying 2.5.

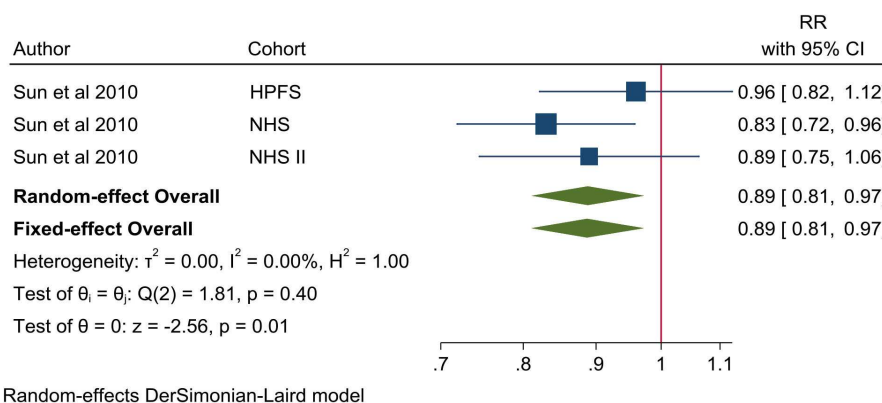
BR, brown rice; IGT, impaired glucose tolerance; MetS, metabolic syndrome; n, number of participants; PABR, partially abraded brown rice; PGBR, pregerminated brown rice; RCTs, randomised controlled trials; UHHPBR, ultra high hydrostatic pressurising brown rice; WR, white rice.



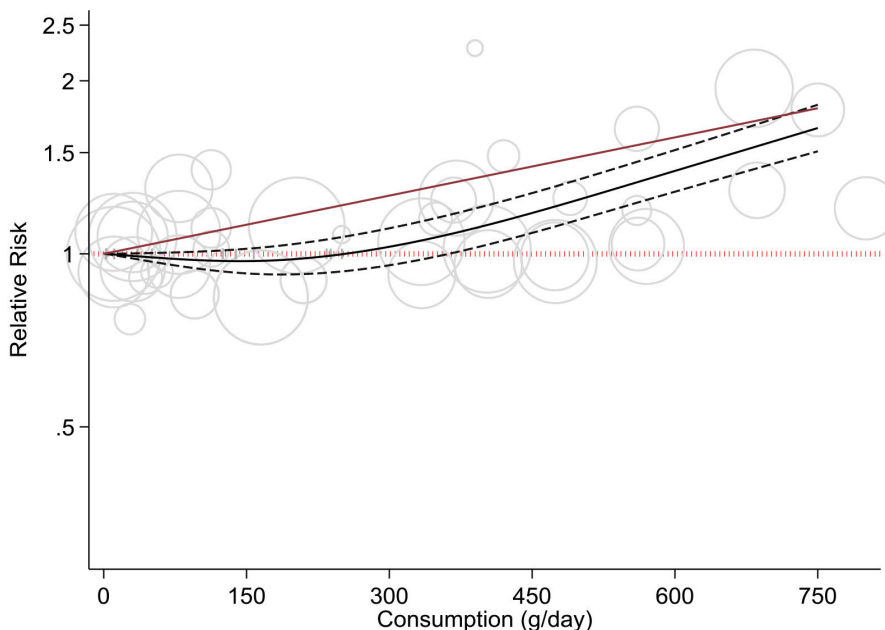
**Figure 2** Forest-plot of white rice consumption and risk of type 2 diabetes (T2D). Risk of T2D (RR and 95% CI) comparing extreme categories of white rice intake from prospective cohort studies. Horizontal lines denote 95% CIs; solid squares represent the point estimate of each study with the size proportional to study weight. Open diamonds represent pooled estimates from the random-effects model (DerSimonian-Laird) and fixed-effects model based on 15 cohort studies (n=577 426). Study weights are from the random-effects analysis. The  $I^2$  and p values for heterogeneity are shown. The red vertical line represents unity. F, female; GCS, Golestan Cohort Study; HPFS, Health Professionals Follow-up Study; JPHC, Japan Public Health Center-based Prospective Study; M, male; MCC, Melbourne Collaborative Cohort Study; NHS, Nurses' Health Study; PS, Pizarra Study; PURE, Prospective Urban Rural Epidemiology Study; SCHS, Singapore Chinese Health Study; SWHS, Shanghai Women's Health Study; TLGS, Tehran Lipid and Glucose Study.

p value for linearity, <0.001). In subgroup analysis, a similar threshold was observed among studies that were not conducted in China or South Asia (rest of the world) while a j-shaped association was observed in studies that were conducted in China, and a linear dose-response

was observed in studies that were conducted in South Asia (online supplemental figure 7). When stratified by regional rice consumption habits, a j-shaped association was observed in countries that typically consume rice as a staple, likely driven by studies from China, while a linear



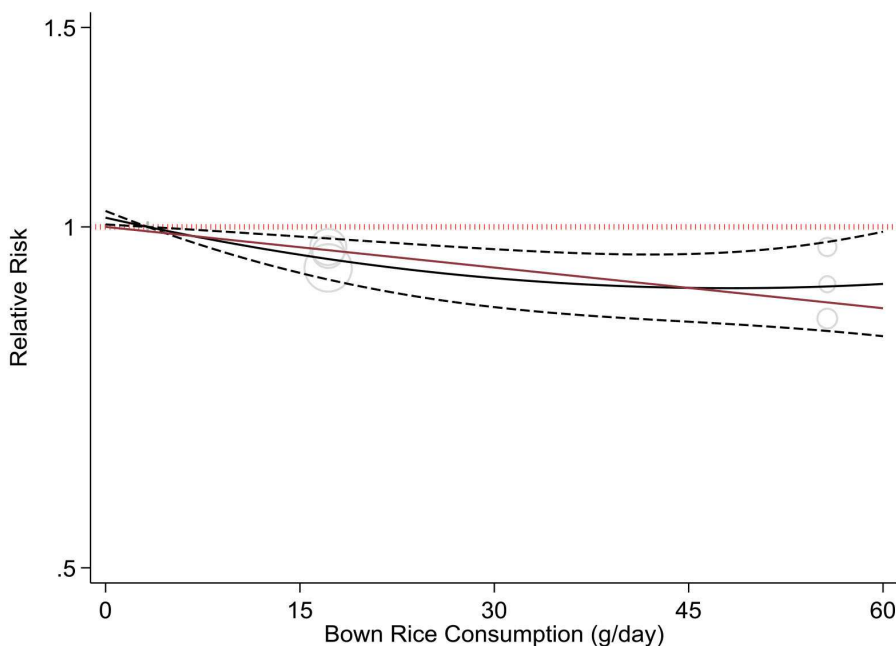
**Figure 3** Forest-plot of brown rice consumption and risk of type 2 diabetes (T2D). Risk of T2D (RR and 95% CI) comparing extreme categories of brown rice intake from prospective cohort studies. Horizontal lines denote 95% CIs; solid squares represent the point estimate of each study with the size proportional to study weight. Open diamonds represent pooled estimates from the random-effects model (DerSimonian-Laird) and fixed-effects model based on three cohort studies (n=197 228). Study weights are from the random-effects analysis. The  $I^2$  and p values for heterogeneity are shown. The red vertical line represents unity. HPFS, Health Professionals Follow-up Study; NHS, Nurses' Health Study.



**Figure 4** Dose–response meta-analysis of white rice consumption and risk of type 2 diabetes (T2D). Fixed-effects cubic spline for intake of white rice in relation to risk of T2D. Black solid line represents the point estimates and the black dashed lines represent the corresponding 95% CI's. The red solid line indicates the exact linear relationship and red dashed line represents unity. A departure from linearity was observed at intake levels below ~300 g/d (cooked weight) (p value for non-linearity <0.001). RR at 1 serv/d (158 g): 0.97; 95% CI: 0.92 to 1.02. A linear dose–response was observed at intake levels above 300 g/day with each serving/day (158 g) increment associated with a 13% higher risk of T2D (RR: 1.13; 95% CI: 1.11 to 1.15, p value for linearity, <0.001).

dose–response was observed in countries that do not typically consume rice as a staple and the rest of the world (online supplemental figure 8).

The non-linear polynomial model for intake of brown rice showed no evidence of non-linearity between brown rice consumption and risk of T2D (p-value for



**Figure 5** Dose–response meta-analysis of brown rice consumption and risk of type 2 diabetes (T2D). Non-linear polynomial model for intake of brown rice in relation to risk of T2D. Black solid line represents the point estimates and the black dashed lines the corresponding 95% CIs. The red solid line indicates the exact linear relationship and the red dashed line represents unity. No departure from linearity was observed (p value for non-linearity, 0.13). RR at 50 g/d (cooked weight): 0.88; 95% CI: 0.82 to 0.95. A linear dose–response was observed with each 50 g/d increment associated with a 13% lower risk of T2D (RR: 0.87; 95% CI: 0.80 to 0.94, p value for linearity, 0.001).

**Table 3** Pooled estimates for between-group difference in type 2 diabetes (T2D) risk factors from RCTs replacing white rice with brown rice

Risk factor	Number of studies	Mean difference (95% CI)†	I <sup>2</sup> value for heterogeneity (%)
HDL-cholesterol (mmol/L)	11	0.06 (0.00 to 0.11)	65.28
HOMA-IR	6	-0.14 (-0.43 to 0.15)	0.00
Total cholesterol (mmol/L)	10	-0.07 (-0.23 to 0.09)	58.37
HbA1c (%)	7	-0.05 (-0.14 to 0.05)	42.66
Triglycerides (mmol/L)	11	-0.00 (-0.01 to 0.01)	0.00
LDL-cholesterol (mmol/L)	11	-0.05 (-0.25 to 0.16)	82.95
Fasting blood glucose (mmol/L)	11	-0.06 (-0.23 to 0.11)	59.56
Systolic blood pressure (mm Hg)	8	-3.73 (-7.04 to -0.41)	76.22
Diastolic blood pressure (mm Hg)	8	-2.26 (-4.54 to 0.01)	78.55
Waist circumference (cm)	8	-0.79 (-2.11 to 0.53)	76.97

Mean difference in change from baseline (95% CI) of T2D risk factors between brown rice and white rice (control) regimens from RCTs. Trials evaluated the effect of replacing white rice with brown rice. Pooled estimates from the random-effects analysis are shown and based on a maximum of 11 RCTs (n=1034). The I<sup>2</sup> values for heterogeneity are shown. Effect estimates for individual studies along with study weights and fixed-effects models are shown in online supplemental figures 8–14. Conversion of glucose in mg/dl to mmol/l by multiplying 0.0555. Conversion of triglycerides in mg/dl to mmol/l by multiplying 0.0113. Conversion of cholesterol in mg/dl to mmol/l by multiplying 0.0259. HDL, high-density lipoprotein; LDL, low-density lipoprotein; RCTs, randomised controlled trials.

non-linearity=0.13) (figure 5). Each 50g/d (cooked weight) increment in brown rice intake was associated with a 13% lower risk of T2D (RR: 0.87; 95% CI: 0.80 to 0.94, p value for linearity=0.001).

### Randomised controlled trials

The between-group difference in HDL cholesterol (0.07 mmol/L; 0.00 to 0.13 mmol/L) was statistically significant in favour of the brown rice group with moderate to high heterogeneity detected (I<sup>2</sup>=69.56%) (table 3, online supplemental figure 9). Results from the fixed-effects model were similar. There was also a significant between-group difference for systolic blood pressure in favour of the brown rice group (-3.73 mm Hg; -7.04 to -0.41) with high heterogeneity (I<sup>2</sup>=76.22%), although findings from the fixed-effects model were null, likely due to larger statistical weight being given to smaller studies in the random-effects model (table 3, online supplemental figure 10). No other between-group differences were observed (table 3, online supplemental figures 11–18). However, differences in diastolic blood pressure (-2.26 mm Hg; -4.54 to 0.01; I<sup>2</sup>=78.55%), HOMA-IR (-0.14; -0.43 to 0.15; I<sup>2</sup>=0%), total cholesterol (-0.07 mmol/L; -0.23 to 0.09 mmol/L; I<sup>2</sup>=58.37%), HbA1c (-0.05%; -0.14 to 0.05%; I<sup>2</sup>=42.66%), LDL-cholesterol (-0.05 mmol/L; -0.25 to 0.16; I<sup>2</sup>=82.95%), FBG (-0.06 mmol/L; -0.23

to 0.11; I<sup>2</sup>=59.56%), and waist circumference (-0.79 cm; -2.11 to 0.53; I<sup>2</sup>=76.97%) favoured the brown rice group.

### Influence analysis

The influence analysis for cohort studies of white rice intake (online supplemental figure 19) showed a reduction in magnitude of the pooled RR with the omission of the study by Villegas *et al* (1.10; 95% CI: 0.99 to 1.22) conducted in the Shanghai Women's health Study. However, results were consistent with the overall pooled RRs, suggesting a higher risk of T2D associated with white rice intake. The lack of substantial differences in the pooled RR with the removal of the individual studies suggested that no individual study had a predominant effect on the meta-analyses. Influence analysis for meta-analyses of RCTs for outcomes that were assessed in all 11 studies (FBG, HDL-cholesterol, LDL-cholesterol and triglycerides) is shown in online supplemental figures 20–23. For FBG, when the study by Bui *et al* was removed, the pooled estimate increased (online supplemental figure 20); for HDL cholesterol when the study by Mai *et al* was removed, the pooled estimate decreased (online supplemental figure 21); and for LDL cholesterol when the study by Kazemzadeh *et al* was removed, the pooled estimate decreased, and when the study by Geng *et al* was removed, the pooled estimate increased (online supplemental figure 22). However, these changes were not material as the 95% CI of the effect estimates when individual studies were left out overlapped with the overall pooled summary estimate. Influence analysis was not conducted for cohort studies of brown rice or RCTs of other outcomes due to insufficient studies.

### Publication bias

The Funnel plot for the meta-analysis of cohort studies of white rice intake and risk of T2D showed an asymmetric shape, suggesting the presence of potential publication bias (online supplemental figure 24). However, according to Egger's test (p-value, 0.68), the presence of potential publication bias is unlikely. Funnel plots for meta-analyses of RCTs for outcomes that were assessed in all 11 studies (FBG, HDL-cholesterol, LDL-cholesterol and triglycerides) are shown in online supplemental figures 25–28. Based on the shape of the plots, potential publication bias may be present in meta-analyses of HDL-cholesterol and FBG with marginal p-values from Egger's test. Publication bias was not assessed for cohort studies of brown rice or for RCTs of other outcomes due to insufficient studies.

### Strength of the evidence

NutriGrade scores to assess the overall strength of the meta-evidence from cohort studies of white rice and brown rice were 6.3 and 6.4 respectively, suggesting that the strength of the evidence from these meta-analyses was moderate (online supplemental table 4). Across the individual domains of NutriGrade, the following downgrades were applied: risk of bias for studies of white rice based on



mean NOS score; heterogeneity for studies of white rice based on  $I^2 \geq 40\%$ ; publication bias for studies of brown rice since there were  $< 5$  studies; and effect size for studies of white rice and brown rice since pooled RRs were 0.80–1.20 comparing extreme categories. NutriGrade scores for RCTs ranged from 5.9 to 6.9 for outcomes that were assessed in all 11 studies, suggesting that the strength of the evidence from these meta-analyses was considered moderate and low. Across individual domains of NutriGrade, the following downgrades were applied: risk of bias for all outcomes based on Cochrane RoB-2; precision for LDL cholesterol, TG's and FBG since 95% CI of pooled mean difference included the null value; heterogeneity for HDL and LDL cholesterol and FBG based on  $I^2 \geq 40\%$ ; publication bias for HDL cholesterol and FBG and funding bias for all outcomes since affiliation with private institutions and foundations were noted for some studies (online supplemental table 4).

## DISCUSSION

In our meta-analysis of prospective cohort studies of rice intake and risk of T2D, we found a positive association between intake of white rice and risk of T2D. Associations appeared stronger in women compared with men, and in studies conducted in South Asia compared with China and other world regions, although differences across subgroups were not statistically significant. Overall, these findings are consistent with previous meta-analyses that also reported a positive association between white rice intake and risk of T2D.<sup>10 11</sup> However, in the present meta-analysis that included a number of additional studies from other countries, we observed a linear dose–response at intake levels above 300 g/day (cooked weight) (~2 servings), suggestive of a threshold. From our subgroup analysis, it appeared that this threshold may be driven by the j-shaped association observed for studies conducted in China. In contrast, a linear dose–response association was observed for studies conducted in South Asia. The reason for this difference is not clear but could relate to regional differences in the type of rice that is consumed, other foods that are consumed with rice and how rice is prepared. It is also possible that ethnic differences in the pathophysiological response to high glycaemic load (GL) diets could be implicated.<sup>36</sup> Our meta-analysis also found an inverse association between brown rice and risk of T2D. Results from the dose–response analyses were consistent with each 50 g/day (cooked weight) increment of brown rice associated with a 13% lower risk of T2D.

While the findings of our meta-analyses of cohort studies support the replacement of white rice with brown rice for T2D risk mitigation, findings from our meta-analysis of RCTs replacing white rice with brown rice on T2D risk factors were inconsistent with a significant benefit observed only for HDL-cholesterol and SBP, although findings for SBP were null in the fixed-effects model. These results are in agreement with a previous meta-analysis of RCTs of brown rice on metabolic parameters that also found

a benefit on HDL-cholesterol,<sup>12</sup> although another meta-analysis of RCTs found no effect of brown rice compared with white rice on HDL-cholesterol.<sup>13</sup> Both of these meta-analyses, included fewer studies than ours, and combined study populations with prediabetes and T2D, which could have different effects on metabolism. However, these meta-analyses also found a benefit of brown rice compared with white rice on body weight, which was not assessed in our meta-analysis, suggesting a therapeutic role of brown rice on weight management among patients with prediabetes and T2D.<sup>12</sup> Reasons for the discrepant results between our meta-analyses of cohort studies and trials may be due to the low quality and methodological limitations of the included trials including small sample size, high drop-out rates and difficulty monitoring compliance. The duration of the majority of studies ranged from 4 to 16 weeks, which may have been insufficient to detect meaningful changes in clinical indices among predominately healthy populations. In addition, the RCTs included in our meta-analysis evaluated the effect of replacing white rice with brown rice under real-world settings without participant blinding and are more an assessment of intervention delivery rather than causality.

The main difference between brown rice and white rice is in the method of processing. Polishing of white rice strips the outer bran and germ layers of the grain, resulting in the loss of fibre and other nutrients present in the bran, leaving the starchy endosperm. Unlike white rice, brown rice is not milled and contains both the germ and bran. These parts of the grain contain numerous phytochemicals including polyphenols, phytosterols and lignans, as well as vitamins, minerals, essential fatty acids and dietary fibre, many of which have been linked to T2D prevention. A meta-analysis by the WHO found consistent evidence for benefits of consuming dietary fibre and whole grains on several non-communicable diseases including T2D.<sup>7</sup> Recent findings from the PURE study found that a high intake of refined grains was associated with higher risk of mortality and cardiovascular disease.<sup>37</sup> Brown rice contains nearly exclusively insoluble cereal fibre, which has been consistently associated with improved insulin sensitivity and reduced risk for T2D.<sup>38 39</sup> These benefits may be due in part to the production of short-chain fatty acids in the large intestine through fermentation of fibre by gut microbiota.<sup>40</sup> Diets high in cereal fibre have also been linked to a low GI and GL, due to slower digestion and absorption of glucose into circulation. Previous studies have shown that diets high in GI and GL can lead to an increased glycaemic response and insulin resistance<sup>41</sup> and have been associated with higher risk of cardiometabolic diseases and death.<sup>42 43</sup> The GI of brown rice is generally lower than white rice, however, values can vary depending on the milling process, strain of rice, growing conditions and method of preparation.<sup>6 44 45</sup> In our meta-analysis of RCTs, six of the nine studies specified the strain of rice or processing method, which could impact the glycaemic response. For example, in the study by Malik *et al*<sup>30</sup> parboiled brown rice was used, which

undergoes a premilling process that often leads to a lower GI although differences in parboiling techniques can yield differential impacts on GI.<sup>46</sup> A previous feeding trial demonstrated that parboiled brown rice but not brown rice reduced postprandial blood glucose levels compared with white rice<sup>47</sup> and a meta-analysis of RCTs found that pregerminated brown rice has better functional effects on the lipid profile and FBG compared with brown rice.<sup>13</sup> The adverse effects of high GI and GL diets tend to be more pronounced in individuals with excess adiposity, who are more likely to have insulin-resistance compared with lean individuals.<sup>48</sup> Since our meta-analysis was conducted among predominantly healthy populations and we were unable to stratify by weight status given the available data, we were not able to explore that relation.

Subgroup findings from our meta-analysis showed that the positive association between white rice and risk of T2D was strongest in studies conducted in South Asia compared with studies in Chinese populations or other parts of the world, although differences were not statistically significant. Of note, three of the four studies conducted among Chinese populations showed no association between white rice and risk of T2D. This could be due in part to intake of vegetables, meat and seafood with rice in mixed dishes that is typical in the Chinese diet, which can reduce dietary GL. In countries in South Asia, such as India, high intakes of white rice are consumed in the context of diets low in protein and other nutrients, which may be a key regional driver of T2D risk.<sup>17</sup> The differential associations between white rice and T2D risk across Asian populations warrants further investigation.

This systematic review and meta-analysis on rice intake and risk of T2D is the most comprehensive synthesis of the evidence to date that includes findings from both prospective cohort studies of hard endpoints and trials of intermediate cardiometabolic risk factors. Key strengths include the large sample size and long duration of follow-up of cohort studies from different parts of the world. We also used systematic methods including risk of bias and evidence grading specific for nutrition research, conducted categorical and dose–response analyses and a number of sensitivity analyses to assess the robustness of our results.

Rice, predominantly consumed as a refined grain, is a staple food for more than 50% of the world's population.<sup>49</sup> Our findings have broad implications given the widespread consumption of rice particularly in LMICs where T2D and related comorbidities are rapidly rising. However, several limitations should be noted. Only three cohorts with data on brown rice consumption<sup>8</sup> were included in the meta-analysis, all of which were conducted among predominantly white health professionals in the USA with fairly low intake. Although these studies were adjusted for a number of lifestyle factors, residual confounding remains a concern and generalisability of the findings to other populations is limited. We had too few studies to conduct subgroup analyses for cohort studies of brown rice and RCT outcomes. Our categorisation of

geographic regions into China, South Asia and the rest of the world may have masked the effects of cultural variation in the diet in individual countries and ethnic/racial variations in T2D risk as we were unable to extract data on ethnicity. Despite conducting several subgroup analyses, heterogeneity persisted in our meta-analysis of white rice intake in cohort studies. Although individual cohort studies adjusted for a number of confounders including diet quality, residual confounding remains a concern, particularly by socioeconomic status. However, the majority of cohort studies were considered to be of good or fair quality, while RCTs were considered to have low or some concern for risk of bias. Finally, the overall strength of the meta-evidence from cohort studies was considered moderate and moderate and low for RCTs. There are no RCTs with hard endpoints on this topic, thus the assessment of rice intake on T2D risk relies on observational studies and trials of limited quality on intermediate risk factors. As randomised trials comparing brown rice with white rice on T2D incidence as the endpoint may not be feasible, further RCTs on intermediate risk factors and cohort studies comparing white rice with brown rice and other whole grains would be useful.

In conclusion, this systematic review and meta-analyses provides additional support for a positive association between white rice intake and risk of T2D. Findings also suggest that brown rice is inversely associated with risk of T2D, although results are based on limited data. Replacing white rice with brown rice or other whole grains has the potential to be a low-cost and feasible lifestyle strategy to improve diet quality and help reduce T2D risk.

#### Author affiliations

<sup>1</sup>Department of Biostatistics, Dalla Lana School of Public Health, University of Toronto, Toronto, Ontario, Canada

<sup>2</sup>Women's College Hospital, Toronto, Ontario, Canada

<sup>3</sup>Department of Nutritional Sciences, Temerty Faculty of Medicine, University of Toronto, Toronto, Ontario, Canada

<sup>4</sup>Department of Food and Nutrition Research, Madras Diabetes Research Foundation, Chennai, Tamil Nadu, India

<sup>5</sup>School of Health and Related Research, The University of Sheffield, Sheffield, UK

<sup>6</sup>Medical Sciences and Nutrition, University of Aberdeen, Aberdeen, UK

<sup>7</sup>Channing Division of Network Medicine, Brigham and Women's Hospital, Boston, Massachusetts, USA

<sup>8</sup>Department of Nutrition, Harvard University T H Chan School of Public Health, Boston, Massachusetts, USA

<sup>9</sup>Risk Factor Modification Centre, St. Michael's Hospital, Toronto, Ontario, Canada

<sup>10</sup>Department of Diabetology, Madras Diabetes Research Foundation, Chennai, Tamil Nadu, India

**Contributors** VSM conceived of the study. JY and VSM wrote the study protocol and designed the analysis. JY registered the protocol and conducted the literature search. JY, MT, SJ and VSM assessed the eligibility of studies for inclusion in the analysis. JY and VSM had access to, and verified, the underlying data from all original research articles. Statistical analyses and evidence grading were done by JY with guidance from TK and checked by VSM. JY and BB wrote the first draft of the manuscript. SV, VR, AP, SB, QS, WW, FBH, DJAJ and VSM interpreted the data and critically reviewed the manuscript for important intellectual content. VSM had final responsibility to submit the manuscript for publication and is the guarantor.

**Funding** This study received no external funding. VSM is supported by the Canada Research Chair programme. We thank authors who provided additional data for meta-analysis.

**Competing interests** DJAJ has received research grants from Loblaw Companies, the Almond Board of California, Soy Nutrition Institute (SNI) and the Canadian Institutes of Health Research (CIHR). He has received in-kind supplies for trials as a research support from the Almond board of California, Walnut Council of California, the Peanut Institute, Barilla, Unilever, Unico, Primo, Loblaw Companies, Quaker (Pepsico), Pristine Gourmet, Bunge Limited, Kellogg Canada, WhiteWave Foods. He has been on the speaker's panel, served on the scientific advisory board and/or received travel support and/or honoraria from Nutritional Fundamentals for Health (NFH)-Nutramedica, Saint Barnabas Medical Center, The University of Chicago, 2020 China Glycaemic Index (GI) International Conference, Atlantic Pain Conference, Academy of Life Long Learning, Loblaw Companies, Diet Quality Photo Navigation (DQPN), Better Therapeutics (FareWell), Verywell, True Health Initiative (THI), Heali AI Corp, Institute of Food Technologists (IFT), Soy Nutrition Institute (SNI), Herbalife Nutrition Institute (HNI), Herbalife International, Pacific Health Laboratories, Nutritional Fundamentals for Health (NFH), the Soy Foods Association of North America, the Nutrition Foundation of Italy (NFI), the Toronto Knowledge Translation Group (St. Michael's Hospital), the Canadian College of Naturopathic Medicine, The Hospital for Sick Children, the Canadian Nutrition Society (CNS) and the American Society of Nutrition (ASN). He is a member of the International Carbohydrate Quality Consortium (ICQC). His wife, Alexandra L Jenkins, is a director and partner of INQUIS Clinical Research for the Food Industry, his two daughters, Wendy Jenkins and Amy Jenkins, have published a vegetarian book that promotes the use of the low glycaemic index plant foods advocated here, The Portfolio Diet for Cardiovascular Risk Reduction (Academic Press/Elsevier 2020 ISBN:978-0-12-810510-8) and his sister, Caroline Brydson, received funding through a grant from the St. Michael's Hospital Foundation to develop a cookbook for one of his studies. He is also vegan. VSM and SV are involved in the production and distribution of brown rice. VSM has developed a healthier variety of white rice and is involved in studies on glycaemic index of various rice varieties. TK has received research support from the International Life Science Institute (ILSI), and the National Honey Board. VSM is a consultant for the Nutrition Guidance Expert Advisory Group for the WHO. SB is a scientific consultant for Layer IV for work that is unrelated to this manuscript. There are no other financial or personal conflicts of interest to disclose that are related to the contents of this manuscript. The funding sources had no role in study design; in the collection, analysis and interpretation of data; in the writing of the report or in the decision to submit the article for publication. The authors are not affiliated with the funding institutions.

**Patient and public involvement** Patients and/or the public were not involved in the design, or conduct, or reporting or dissemination plans of this research.

**Patient consent for publication** Not required.

**Provenance and peer review** Not commissioned; externally peer reviewed.

**Data availability statement** Data are available upon reasonable request. The study data set can be requested from VSM: vasanti.malik@utoronto.ca.

**Supplemental material** This content has been supplied by the author(s). It has not been vetted by BMJ Publishing Group Limited (BMJ) and may not have been peer-reviewed. Any opinions or recommendations discussed are solely those of the author(s) and are not endorsed by BMJ. BMJ disclaims all liability and responsibility arising from any reliance placed on the content. Where the content includes any translated material, BMJ does not warrant the accuracy and reliability of the translations (including but not limited to local regulations, clinical guidelines, terminology, drug names and drug dosages), and is not responsible for any error and/or omissions arising from translation and adaptation or otherwise.

**Open access** This is an open access article distributed in accordance with the Creative Commons Attribution Non Commercial (CC BY-NC 4.0) license, which permits others to distribute, remix, adapt, build upon this work non-commercially, and license their derivative works on different terms, provided the original work is properly cited, appropriate credit is given, any changes made indicated, and the use is non-commercial. See: <http://creativecommons.org/licenses/by-nc/4.0/>.

#### ORCID iDs

David J A Jenkins <http://orcid.org/0000-0003-1192-9571>

Vasanti S Malik <http://orcid.org/0000-0002-9453-4796>

#### REFERENCES

- Saeedi P, Petersohn I, Salpea P, *et al*. Global and regional diabetes prevalence estimates for 2019 and projections for 2030 and 2045: Results from the International Diabetes Federation Diabetes Atlas, 9<sup>th</sup> edition. *Diabetes Res Clin Pract* 2019;157:107843.

- Malik VS, Willett WC, Hu FB. Global obesity: trends, risk factors and policy implications. *Nat Rev Endocrinol* 2013;9:13–27.
- Mattei J, Malik V, Wedick NM, *et al*. Reducing the global burden of type 2 diabetes by improving the quality of staple foods: the global nutrition and epidemiologic transition initiative. *Global Health* 2015;11:23.
- Aune D, Keum N, Giovannucci E, *et al*. Whole grain consumption and risk of cardiovascular disease, cancer, and all cause and cause specific mortality: systematic review and dose-response meta-analysis of prospective studies. *BMJ* 2016;353:i2716.
- Atkinson FS, Foster-Powell K, Brand-Miller JC. International tables of glycemic index and glycemic load values: 2008. *Diabetes Care* 2008;31:2281–3.
- Atkinson FS, Brand-Miller JC, Foster-Powell K, *et al*. International tables of glycemic index and glycemic load values 2021: a systematic review. *Am J Clin Nutr* 2021;114:1625–32.
- Reynolds A, Mann J, Cummings J, *et al*. Carbohydrate quality and human health: a series of systematic reviews and meta-analyses. *Lancet* 2019;393:434–45.
- Sun Q, Spiegelman D, van Dam RM, *et al*. White rice, brown rice, and risk of type 2 diabetes in US men and women. *Arch Intern Med* 2010;170:961–9.
- Hu Y, Ding M, Sampson L, *et al*. Intake of whole grain foods and risk of type 2 diabetes: results from three prospective cohort studies. *BMJ* 2020;370:m2206.
- Hu EA, Pan A, Malik V, *et al*. White rice consumption and risk of type 2 diabetes: meta-analysis and systematic review. *BMJ* 2012;344:e1454.
- Ren G, Qi J, Zou Y. Association between intake of white rice and incident type 2 diabetes - An updated meta-analysis. *Diabetes Res Clin Pract* 2021;172:108651.
- Abdul Rahim AF, Norhayati MN, Zainudin AM. The effect of a brown-rice diets on glycemic control and metabolic parameters in prediabetes and type 2 diabetes mellitus: a meta-analysis of randomized controlled trials and controlled clinical trials. *PeerJ* 2021;9:e11291.
- Golzarand M, Toolabi K, Eskandari Delfan S, *et al*. The effect of brown rice compared to white rice on adiposity indices, lipid profile, and glycemic markers: a systematic review and meta-analysis of randomized controlled trials. *Crit Rev Food Sci Nutr* 2021;17:1–18.
- Higgins JPT, Thomas J, Chandler J, eds. *Cochrane Handbook for Systematic Reviews of Interventions version 6.3 (updated February 2022)*, 2022. [www.training.cochrane.org/handbook](http://www.training.cochrane.org/handbook)
- Ren C, Hong B, Zheng X, *et al*. Improvement of germinated brown rice quality with autoclaving treatment. *Food Sci Nutr* 2020;8:1709–17.
- Tufanaru C, Munn Z, Stephenson M, *et al*. Fixed or random effects meta-analysis? Common methodological issues in systematic reviews of effectiveness. *Int J Evid Based Healthc* 2015;13:196–207.
- Bhavadharini B, Mohan V, Dehghan M, *et al*. White rice intake and incident diabetes: a study of 132,373 participants in 21 countries. *Diabetes Care* 2020;43:2643–50.
- Seah JYH, Koh W-P, Yuan J-M, *et al*. Rice intake and risk of type 2 diabetes: the Singapore Chinese Health Study. *Eur J Nutr* 2019;58:3349–60.
- Hodge AM, English DR, O'Dea K, *et al*. Glycemic index and dietary fiber and the risk of type 2 diabetes. *Diabetes Care* 2004;27:2701–6.
- Bekkering GE, Harris RJ, Thomas S, *et al*. How much of the data published in observational studies of the association between diet and prostate or bladder cancer is usable for meta-analysis? *Am J Epidemiol* 2008;167:1017–26.
- Schwingshackl L, Knüppel S, Schwedhelm C, *et al*. Perspective: NutriGrade: a scoring system to assess and judge the Meta-Evidence of randomized controlled trials and cohort studies in nutrition research. *Adv Nutr* 2016;7:994–1004.
- Villegas R, Liu S, Gao Y-T, *et al*. Prospective study of dietary carbohydrates, glycemic index, glycemic load, and incidence of type 2 diabetes mellitus in middle-aged Chinese women. *Arch Intern Med* 2007;167:2310–6.
- Nanri A, Mizoue T, Noda M, *et al*. Rice intake and type 2 diabetes in Japanese men and women: the Japan public health center-Based prospective study. *Am J Clin Nutr* 2010;92:1468–77.
- Soriguer F, Colomo N, Oliveira G, *et al*. White rice consumption and risk of type 2 diabetes. *Clin Nutr* 2013;32:481–4.
- Golzar A, Khalili D, Etemadi A, *et al*. White rice intake and incidence of type-2 diabetes: analysis of two prospective cohort studies from Iran. *BMC Public Health* 2017;17:133.
- Zhang G, Pan A, Zong G, *et al*. Substituting white rice with brown rice for 16 weeks does not substantially affect metabolic risk factors in middle-aged Chinese men and women with diabetes or a high risk for diabetes. *J Nutr* 2011;141:1685–90.

- 27 Wang B, Medapalli R, Xu J, *et al.* Effects of a whole rice diet on metabolic parameters and inflammatory markers in prediabetes. *Espen J* 2013;8:e15–20.
- 28 Kazemzadeh M, Safavi SM, Nematollahi S, *et al.* Effect of brown rice consumption on inflammatory marker and cardiovascular risk factors among overweight and obese non-menopausal female adults. *Int J Prev Med* 2014;5:478–88.
- 29 Araki R, Ushio R, Fujie K, *et al.* Effect of partially-abraded brown rice consumption on body weight and the indicators of glucose and lipid metabolism in pre-diabetic adults: a randomized controlled trial. *Clin Nutr ESPEN* 2017;19:9–15.
- 30 Malik VS, Sudha V, Wedick NM, *et al.* Substituting brown rice for white rice on diabetes risk factors in India: a randomised controlled trial. *Br J Nutr* 2019;121:1389–97.
- 31 Mai TT, Trang TT, Hai TT. Effectiveness of germinated brown rice on metabolic syndrome: a randomized control trial in Vietnam. *AIMS Public Health* 2020;7:33–43.
- 32 Geng S, Zhu Y, Zhang J. Lowering effect of pre-germinated brown rice on dyslipidemia in Chinese patients. *Int J Clin Exp Med* 2016;9:22317–23.
- 33 Kuroda Y, Matsuzaki K, Wakatsuki H, *et al.* Influence of ultra-high hydrostatic pressurizing brown rice on cognitive functions and mental health of elderly Japanese individuals: a 2-year randomized and controlled trial. *J Nutr Sci Vitaminol* 2019;65:S80–7.
- 34 Shimabukuro M, Higa M, Kinjo R, *et al.* Effects of the brown rice diet on visceral obesity and endothelial function: the BRAVO study. *Br J Nutr* 2014;111:310–20.
- 35 Bui TN, Le TH, Nguyen DH, *et al.* Pre-germinated brown rice reduced both blood glucose concentration and body weight in Vietnamese women with impaired glucose tolerance. *J Nutr Sci Vitaminol* 2014;60:183–7.
- 36 Narayan KMV, Kanaya AM. Why are South Asians prone to type 2 diabetes? A hypothesis based on underexplored pathways. *Diabetologia* 2020;63:1103–9.
- 37 Swaminathan S, Dehghan M, Raj JM, *et al.* Associations of cereal grains intake with cardiovascular disease and mortality across 21 countries in prospective urban and rural epidemiology study: prospective cohort study. *BMJ* 2021;372:m4948.
- 38 InterAct Consortium. Dietary fibre and incidence of type 2 diabetes in eight European countries: the EPIC-InterAct study and a meta-analysis of prospective studies. *Diabetologia* 2015;58:1394–408.
- 39 Weickert MO, Pfeiffer AFH. Metabolic effects of dietary fiber consumption and prevention of diabetes. *J Nutr* 2008;138:439–42.
- 40 Nogal A, Valdes AM, Menni C. The role of short-chain fatty acids in the interplay between gut microbiota and diet in cardio-metabolic health. *Gut Microbes* 2021;13:1–24.
- 41 Ludwig DS. The glycemic index: physiological mechanisms relating to obesity, diabetes, and cardiovascular disease. *JAMA : the journal of the American Medical Association* 2002;287:2414–23.
- 42 Bhupathiraju SN, Tobias DK, Malik VS, *et al.* Glycemic index, glycemic load, and risk of type 2 diabetes: results from 3 large US cohorts and an updated meta-analysis. *Am J Clin Nutr* 2014;100:218–32.
- 43 Jenkins DJA, Dehghan M, Mente A, *et al.* Glycemic index, glycemic load, and cardiovascular disease and mortality. *N Engl J Med* 2021;384:1312–22.
- 44 RamyaBai M, Wedick NM, Shanmugam S, *et al.* Glycemic index and microstructure evaluation of four cereal grain foods. *J Food Sci* 2019;84:3373–82.
- 45 Shobana S, LakshmiPriya N, Bai MR, *et al.* Even minimal polishing of an Indian parboiled brown rice variety leads to increased glycemic responses. *Asia Pac J Clin Nutr* 2017;26:829–36.
- 46 Boers HM, Seijen Ten Hoorn J, Mela DJ. A systematic review of the influence of rice characteristics and processing methods on postprandial glycaemic and insulinaemic responses. *Br J Nutr* 2015;114:1035–45.
- 47 Hamad S, Zafar TA, Sidhu J. Parboiled rice metabolism differs in healthy and diabetic individuals with similar improvement in glycemic response. *Nutrition* 2018;47:43–9.
- 48 Ding EL, Malik VS. Convergence of obesity and high glycemic diet on compounding diabetes and cardiovascular risks in modernizing China: an emerging public health dilemma. *Global Health* 2008;4:4.
- 49 Fukagawa NK, Ziska LH. Rice: importance for global nutrition. *J Nutr Sci Vitaminol* 2019;65:S2–3.