



This is a repository copy of *The Tommy's Clinical Decision Tool, a device for reducing the clinical impact of placental dysfunction and preterm birth : protocol for a mixed-methods early implementation evaluation study.*

White Rose Research Online URL for this paper:
<https://eprints.whiterose.ac.uk/190245/>

Version: Published Version

Article:

Carter, J., Anumba, D. orcid.org/0000-0003-2502-3033, Brigante, L. et al. (12 more authors) (2022) The Tommy's Clinical Decision Tool, a device for reducing the clinical impact of placental dysfunction and preterm birth : protocol for a mixed-methods early implementation evaluation study. *BMC Pregnancy and Childbirth*, 22 (1). 639.

<https://doi.org/10.1186/s12884-022-04867-w>

Reuse

This article is distributed under the terms of the Creative Commons Attribution (CC BY) licence. This licence allows you to distribute, remix, tweak, and build upon the work, even commercially, as long as you credit the authors for the original work. More information and the full terms of the licence here:
<https://creativecommons.org/licenses/>

Takedown

If you consider content in White Rose Research Online to be in breach of UK law, please notify us by emailing eprints@whiterose.ac.uk including the URL of the record and the reason for the withdrawal request.




eprints@whiterose.ac.uk
<https://eprints.whiterose.ac.uk/>

STUDY PROTOCOL

Open Access



The Tommy's Clinical Decision Tool, a device for reducing the clinical impact of placental dysfunction and preterm birth: protocol for a mixed-methods early implementation evaluation study

Jenny Carter^{1,2*} , Dilly Anumba^{2,3}, Lia Brigante^{2,4}, Christy Burden^{2,5}, Tim Draycott^{2,6}, Siobhán Gillespie^{2,3}, Birte Harlev-Lam^{2,4}, Andrew Judge^{2,7}, Erik Lenguerrand^{2,7}, Elaine Sheehan^{2,8,9}, Basky Thilaganathan^{2,9,10}, Hannah Wilson^{1,2}, Cathy Winter^{2,11}, Maria Viner^{2,12} and Jane Sandall^{1,2}

Abstract

Background: Disparities in stillbirth and preterm birth persist even after correction for ethnicity and social deprivation, demonstrating that there is wide geographical variation in the quality of care. To address this inequity, Tommy's National Centre for Maternity Improvement developed the Tommy's Clinical Decision Tool, which aims to support the provision of "the right care at the right time", personalising risk assessment and care according to best evidence. This web-based clinical decision tool assesses the risk of preterm birth and placental dysfunction more accurately than current methods, and recommends best evidenced-based care pathways in a format accessible to both women and healthcare professionals. It also provides links to reliable sources of pregnancy information for women. The aim of this study is to evaluate implementation of Tommy's Clinical Decision Tool in four early-adopter UK maternity services, to inform wider scale-up.

Methods: The Tommy's Clinical Decision Tool has been developed involving maternity service users and healthcare professionals in partnership. This mixed-methods study will evaluate: maternity service user and provider acceptability and experience; barriers and facilitators to implementation; reach (whether particular groups are excluded and why), fidelity (degree to which the intervention is delivered as intended), and unintended consequences. Data will be gathered over 25 months through interviews, focus groups, questionnaires and through the Tommy's Clinical Decision Tool itself. The NASSS framework (Non-adoption or Abandonment of technology by individuals and difficulties achieving Scale-up, Spread and Sustainability) will inform data analysis.

Discussion: This paper describes the intervention, Tommy's Clinical Decision Tool, according to TiDIER guidelines, and the protocol for the early adopter implementation evaluation study. Findings will inform future scale up.

*Correspondence: jenny.carter@kcl.ac.uk

¹ Department of Women and Children's Health, School of Life Course and Population Sciences, King's College London, 10th Floor, North Wing, St Thomas' Hospital, Westminster Bridge Road, London SE1 7EH, UK
Full list of author information is available at the end of the article



© The Author(s) 2022. **Open Access** This article is licensed under a Creative Commons Attribution 4.0 International License, which permits use, sharing, adaptation, distribution and reproduction in any medium or format, as long as you give appropriate credit to the original author(s) and the source, provide a link to the Creative Commons licence, and indicate if changes were made. The images or other third party material in this article are included in the article's Creative Commons licence, unless indicated otherwise in a credit line to the material. If material is not included in the article's Creative Commons licence and your intended use is not permitted by statutory regulation or exceeds the permitted use, you will need to obtain permission directly from the copyright holder. To view a copy of this licence, visit <http://creativecommons.org/licenses/by/4.0/>. The Creative Commons Public Domain Dedication waiver (<http://creativecommons.org/publicdomain/zero/1.0/>) applies to the data made available in this article, unless otherwise stated in a credit line to the data.

Trial registration: This study was prospectively registered on the ISRCTN registry no. [13498237](https://www.isrctn.com/13498237), on 31st January 2022.

Keywords: Decision support, Implementation, Stillbirth, Preterm, eHealth, Process evaluation, Pregnancy, Risk assessment

Background

Poor perinatal outcomes are more common in those from ethnic minority and socially deprived groups [1]. However, even after adjustment for socio-economic and demographic characteristics, wide variation between hospital stillbirth and preterm birth rates persists [2]. This suggests that inequity in maternity care, including risk assessment and targeting of effective interventions, is an important issue that needs to be addressed. The UK's National Health Service (NHS) Long Term Plan [3] primarily aims to ensure national programmes are focused on reducing health inequalities and addressing unwarranted variation in care, whilst empowering people to have more control over their own health, and more personalised care when they need it.

Reducing stillbirth and preterm birth rates in the UK remains a priority. In 2016 the Saving Babies' Lives Care Bundle (SBLCB) was published by NHS England [4]. This document sets out evidence-based guidance for maternity services to achieve a UK Government target to halve stillbirths by 2030. The bundle focused on four elements: reducing smoking in pregnancy; risk assessment and surveillance for fetal growth restriction; raising awareness of reduced fetal movement and effective fetal monitoring during labour. The second version of the care bundle, published in 2019, included a new element, which focused on preventing preterm birth [5], and followed a new UK Government target to reduce the preterm birth rate from 8 to 6% by 2025 [6].

All recent national reports have identified that staff struggle with a lack of information, support and resources to provide the best care. The Each Baby Counts project investigated care related to babies who died (stillbirth or neonatal death) or suffered brain injury during birth. They found that, in 76% of cases under consideration, inadequate risk assessment and recognition was a critical contributory factor to the outcome. They also reported that in half (50%) of the cases, failure to follow guidelines or locally agreed best practice was a critical contributory factor [7]. Reasons for not following guidelines included gaps in training, lack of recognition of problems, heavy workload, staffing levels and local guidelines not being based on best available evidence.

Effective interventions can improve outcomes: aspirin can prevent placental dysfunction and preterm preeclampsia [8]; progesterone and cervical cerclage

can prevent preterm birth [9, 10]. However, these interventions need to be timely, and targeted appropriately, which relies on accurate identification of women with at-risk pregnancies and equity in care provision. At present, risk assessment in pregnancy is undertaken using a checklist approach that has been used ever since the introduction of formal antenatal care. The checklist does not weigh risk factors, assess interaction between risk factors, or include risk reduction for absence of any risks. Most notably, this form of risk assessment is devoid of a personalised or numerical risk score – thereby precluding effective risk communication and personalisation of care for the individual woman.

To address the need to improve risk assessment in pregnancy and reduce inequity in service provision, the Tommy's National Centre for Maternity Improvement developed the Tommy's Clinical Decision Tool. The Centre is a collaboration between Tommy's charity (Registered charity no.1060508), the Royal College of Obstetricians and Gynaecologists (RCOG), the Royal College of Midwives (RCM) and the Women's Voices Network, with several universities (Bristol, Sheffield, St George's London, King's College London) and charities (Mothers for Mothers, Prompt Maternity Foundation). The Tommy's Clinical Decision Tool is a web-based CE marked medical device that processes information directly entered by women themselves as well as clinical test results. It uses this information to more accurately, and automatically, assess a woman's risk of preterm birth and pregnancy complications such as preeclampsia and fetal compromise which can lead to stillbirth. It does this by utilising three validated algorithms for risk assessment and clinical decision support; one for placental disorders (preeclampsia, stillbirth) [11] and two for preterm birth, one at the beginning of pregnancy [12] and the other during pregnancy if women present with symptoms of threatened preterm labour [13]. The tool not only provides individualised risk assessment at the point of care, but also recommends care pathways which are based on best practice and current national guidance. This will lead to better targeting of interventions for preventing stillbirth and preterm birth, whilst providing reassurance and avoiding unnecessary intervention for women at low risk. The Tommy's Clinical Decision Tool provides women with access to their assessments and care recommendations, along with links to good quality, reliable information.

This programme fits with the NHS England’s Maternity Transformation Programme, which seeks to implement the vision set out in “Better Births” [14], that all pregnant women should have access to individualised and safe care, with healthcare providers harnessing advancements in digital health data management. The Tommy’s Clinical Decision Tool utilises digital technology that will ensure access to high quality care for all women, including those who are most likely to suffer the poorest outcomes.

Many promising technological innovations in health and social care are characterised by non-adoption or abandonment by individuals or by failed attempts to scale up locally, spread distantly, or sustain the innovation long term at the organisation or system level. Digital clinical decision support tools require an expanded scope of health worker engagement across the health system in order to scale them up effectively [15]. In order to address this, our implementation strategy has taken account of current evidence regarding success factors which include: a strong evidence base, professional consensus, service user and provider involvement, adequate training for clinicians, decision support results available to healthcare service users as well as providers, automatic provision of decision support and provision of decision support where and when decisions are being made [16].

The Tommy’s National Centre for Maternity Improvement programme aims to see implementation of the Tommy’s Clinical Decision Tool in all NHS maternity services. This will be carried out over four phases (Fig. 1). In Phase I (2020) development and beta testing of the first iteration of the tool were carried out with the Tommy’s Centre dedicated women’s involvement group, and healthcare professionals (HCPs) based in two NHS hospitals through a series of “digital workshops”. This involved initial testing and familiarisation of the prototype tool, refinements to the application and development of training packages. In Phase II, the tool is being implemented as a service development project in four early adopter NHS Trusts. In Phase III, the tool will be rolled-out to another 13 maternity services as part of a 26 site cluster randomised controlled trial (RCT), when the efficacy of the tool in the targeting of appropriate care and improved outcomes will be investigated, along with an evaluation of healthcare costs. Phase IV will see implementation of the tool in all NHS maternity services.

In this paper we provide a detailed description of the intervention, the Tommy’s Clinical Decision Tool, and describe the protocol for a mixed-methods study evaluating the implementation of the Tool in four early adopter NHS Trusts (Phase II).

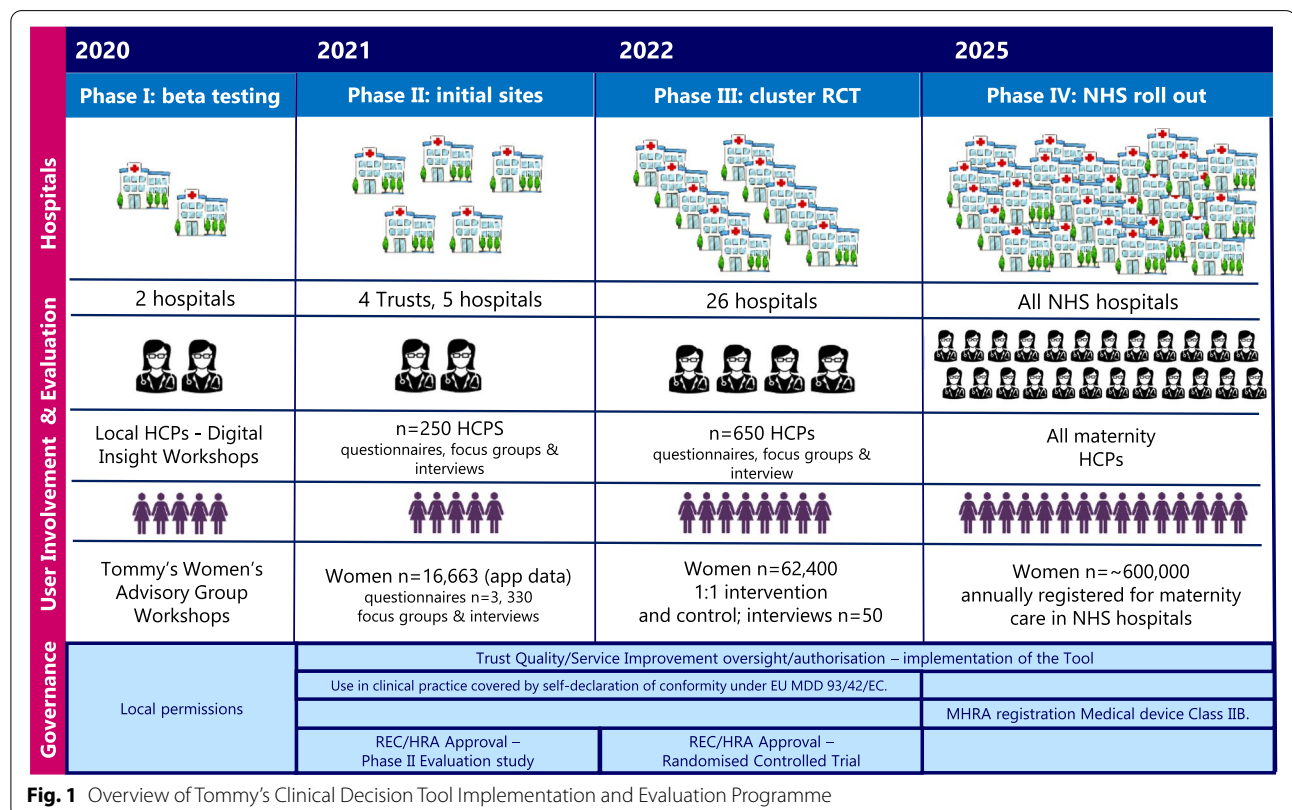


Fig. 1 Overview of Tommy’s Clinical Decision Tool Implementation and Evaluation Programme

The intervention: Tommy's Clinical Decision Tool

The Tommy's National Centre for Maternity Improvement developed a Community of Practice (CoP) group to engage and involve relevant UK maternity care providers and users from a broad geographic and socio-demographic background in the design, development and testing of the device. The CoP formed a consensus on suitable algorithms for use as well as agreeing definitions for risk groups and corresponding personalised care pathways. They agreed that the included algorithms should ideally be taken from high quality RCTs carried out in settings relevant to the UK health care system and demonstrating consistent clinical benefit. Where such trials were unavailable, algorithms would be taken from high quality intervention studies incorporating an appropriate standard care comparison group and showing improvements in relevant clinical outcomes and/or health care resource use, establishing external validation. Two systematic reviews were conducted to identify internally and externally validated multiple marker algorithms suitable for use in risk assessment for placental dysfunction, preterm birth and threatened preterm labour [17, 18].

A systematic review of the literature identified four internally validated first trimester algorithms to predict preterm birth. All used maternal characteristics, medical and previous obstetric history. The only algorithm calculating risk of preterm birth before 34 weeks was selected [12]. The algorithm had also been externally validated in a Dutch cohort [18].

The best performing model for placental function assessment, of the 11 identified, had been developed over 15 years with data from more than 120,000 pregnancies. The regression model uses maternal characteristics (age, height, weight, ethnicity, family history of pre-eclampsia, medical and obstetric history), as well as current blood pressure, first trimester uterine artery Doppler and maternal serum PAPP-A or PlGF. The algorithm was validated in a large multi-centre NIHR trial involving over 16,000 pregnancies, and was shown to have good performance with both improved sensitivity and specificity compared to current NICE recommendations [19]. Efficacy in identifying women at high risk of pre-eclampsia, who were prescribed aspirin, with subsequent reduction of preterm pre-eclampsia, was demonstrated in a large multi-centre double-blind RCT [20]. Effectiveness in a 'real world' setting has also been demonstrated [11].

The algorithm used for assessment in threatened preterm labour utilises risk factors and clinical test results (fetal fibronectin and/or transvaginal ultrasound measurement of cervical length). It is recommended in the Saving Babies Lives Care Bundle v.2, and has been externally validated [13]. A prospective evaluation

demonstrated that the algorithm could safely guide management and avoid hospitalisation in the vast majority (90%) of cases [21]. The current National Institute for Health and Care Excellence (NICE) guideline recommends a treat-all approach for women presenting with symptoms before 30 weeks' gestation. If applied in this cohort, all women would have been admitted, exposing the vast majority of mothers and their babies to unnecessary hospitalisation, medical intervention and in-utero transfers.

The care pathways recommended by the Tool are taken from national guidelines, which include the Saving Babies Lives Care Bundle v.2 [4]. Table 1 column 4 summarises the care pathways that may be recommended, depending on result of the individualised risk assessment, at specific timepoints.

In some circumstances, the individual risk assessment is over-ridden and the application defaults to recommend alternative pathways. These are shown in Table 2.

All women are encouraged to register and to use the Tommy's Clinical Decision Tool's Information Hub, however, in women with multiple pregnancy, the risk assessment functions are disabled. In women with pre-existing diabetes or pre-existing hypertension, only the initial preterm birth risk assessment is available. This is because comprehensive care pathways are already established, and these women are referred to local specialist teams. Trusts may also choose to use the Tommy's Clinical Decision Tool alongside local guidance when delivering care for women with other conditions, such as Antiphospholipid Syndrome or Chronic Kidney Disease.

The Tommy's Clinical Decision Tool has a dual interface: one for use by the maternity service user, with accessible terminology, through which they can also access the Information Hub, and one for healthcare professionals, through which data is verified and/or entered by the clinician. The interfaces were designed and developed by clinicians and women, who approved use of incorporated terminology. Figure 2 shows an example of the dual interface following a placental function assessment.

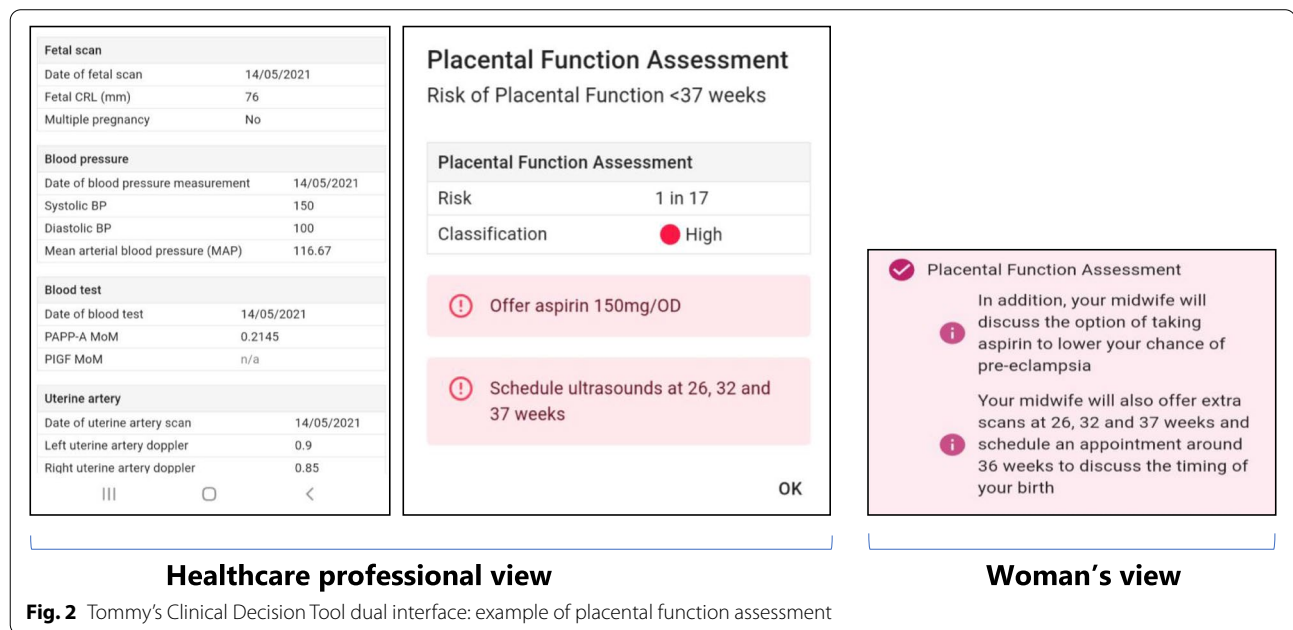
Maternity service users are encouraged to register on the Tool prior to their booking appointment (i.e. the first contact with a midwife who takes a full history and makes plans for her pregnancy care). Once registered, the woman enters information about herself and her medical and obstetric history. During the appointment, the midwife checks with the woman and verifies this information, runs the preterm risk assessment, explains the recommended care pathway and makes any necessary referrals. Before the woman is 16 weeks pregnant, a healthcare professional, usually her midwife, will enter results from her first trimester ultrasound scan, blood results and blood pressure measurement (column 3, Table 1), runs

Table 1 Tommy's Clinical Decision Tool assessments, key input variables and care pathway recommendations

1. Assessment	2. Target	3. Key input variables	4. Care pathway recommendations
Preterm birth assessment	All women, at booking, 8–12 weeks' gestation.	<ul style="list-style-type: none"> • Demographic characteristics. • NHS number. • Medical history. • Obstetric history. 	<ul style="list-style-type: none"> • If low risk: standard care (as per NICE guidelines). • If moderate risk: cervical length at 17–21 weeks' gestation. • If high risk: refer to preterm birth service.
Placental function assessment	All women at booking or before 16 weeks' gestation.	<ul style="list-style-type: none"> • Demographic characteristics. • Medical history. • Blood pressure (BP). • Results from 1st trimester ultrasound scan (USS): crown rump length (CRL); uterine artery dopplers. • Blood test result: PAPP-A MoM 	<ul style="list-style-type: none"> • If low risk: standard care (as per NICE guidelines). • If moderate risk: 2 additional USSs for fetal growth assessment and timing of birth (ToB) discussion. • If high risk: 150 mg aspirin daily, additional 3 USSs and ToB discussion.
Changes in fetal movements (FM) assessment	Women presenting with changes in fetal movements.	<ul style="list-style-type: none"> • Results of placental function assessment (auto populated). • Gestation at attendance. • Number of attendances within the last four weeks. • Presence of gestational diabetes or gestational hypertension. 	<p><i>Dependent on individualised risk:</i></p> <ul style="list-style-type: none"> • Fetal heart auscultation (< 28 weeks). • computerised cardiotocograph (cCTG) (if had USS in last 2 weeks). • cCTG and USS. • Refer to maternal fetal medicine specialist. • Consider offering induction of labour or caesarean birth.
Possible preterm labour assessment	Women presenting with symptoms of threatened preterm labour.	<ul style="list-style-type: none"> • Demographic characteristics. • Medical history. • Obstetric history. • Fetal fibronectin (fFN) test result and/or cervical length measurement. 	<p><i>Dependent on individualised risk of birth within 7 days:</i></p> <ul style="list-style-type: none"> • < 5%: Observation ± discharge • ≥ 5%: Steroids for fetal lung maturation and admission ± in utero transfer to hospital with available neonatal cot, if required.
Timing of birth assessment	Women ≥ 36 weeks identified as moderate or high risk of placental dysfunction.	<ul style="list-style-type: none"> • Estimated fetal weight (EFW). • Umbilical artery pulsatility index (UA PI). • Middle cerebral artery pulsatility index (MCA PI). 	<p><i>Dependent on individualised risk:</i></p> <ul style="list-style-type: none"> • Offer birth from 40 weeks. • Offer birth from 39 weeks. • Offer birth from 37 weeks. • Refer to Specialist/Fetal Medicine.

Table 2 Conditions or situations in which individual risk assessment using the Tool defaults to alternative pathways

- History of cervical surgery noted in medical history: defaults to high risk for preterm birth pathway.
- Previous baby stillborn after 24 weeks or baby born after 37 weeks weighing less than 2500g (5lb 8oz) in obstetric history: defaults to high risk for placental dysfunction pathway.
- Women booking for maternity care after 13 weeks' gestation: defaults to moderate risk for placental function pathway. This is because the placental function algorithm requires the fetal crown rump length (CRL) measurement, which is only used to date pregnancies up to 13⁺⁰ weeks'. After this time the fetal head circumference (HC) is used.
- Ruptured membranes on possible preterm labour assessment: defaults to high risk for preterm birth pathway.
- Gestational hypertension and/or gestational diabetes on changed fetal movements assessment. Care pathway defaults to high risk for placental dysfunction pathway.

**Fig. 2** Tommy's Clinical Decision Tool dual interface: example of placental function assessment

the placental function assessment and actions the recommended care pathway. If the woman later experiences changes in fetal movements, or symptoms of possible preterm labour, the Tommy's Clinical Decision Tool is used to carry out further risk assessments and generate appropriate care recommendations. An overview of touchpoints is shown in Fig. 3, while more detail on these processes is provided in Table 3.

Tommy's Clinical Decision Tool Information Hub

The Information Hub provides women with links to the latest evidence-based information and guidance from trusted resources such as the NHS, Tommy's charity and the Royal College of Obstetricians and Gynaecologists. It displays relevant links at different stages in the woman's pregnancy, based on her gestation at the time she accesses the hub. This resource, which will be regularly reviewed and updated, currently provides links

to information on the conditions and issues listed in Table 4.

Data storage

Data collected through the Tool will initially be held by the Royal College of Obstetricians and Gynaecologists (RCOG), who will host the data in a secure, closed cloud storage in line with NHS Digital security standards. The data will then be securely migrated to NHS Digital and hosted in their Cloud Centre for Excellence (Cloud Cfe).

Methods/Design

Study aim and objectives

Aim

The study is an implementation process evaluation, based on current guidance [22–24], which aims to provide evidence to support the planned 'real world implementation' of Tommy's Clinical Decision Tool within the NHS.

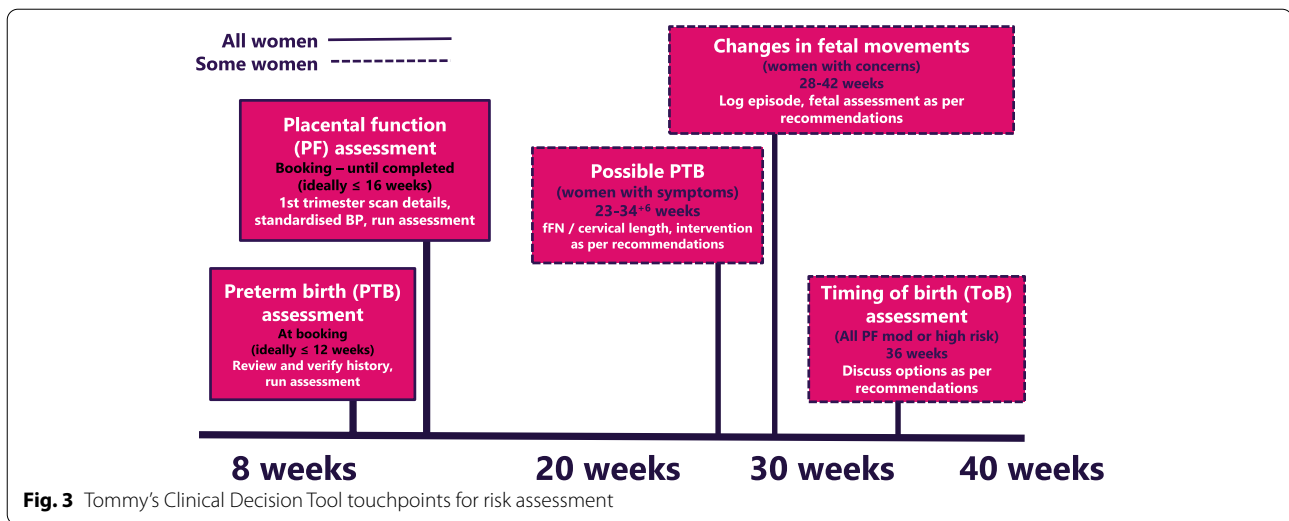


Table 3 Tommy's Clinical Decision Tool—intervention processes

	WHAT (intervention process) & WHO (carries it out)	HOW	WHEN	WHERE
1	Woman invited to register on the Tommy's Clinical Decision Tool.	Invitation to booking appointment by letter, email or text.	First contact with maternity services.	Any context.
2	Woman registers and completes demographic details and short medical and pregnancy history.	Online.	Before booking appointment.	Any context.
3	Woman accesses quality information through the Tool's Information Hub.	Online	Any time during pregnancy. Available links to information correspond to gestation at time of enquiry, e.g. "Bleeding in early pregnancy" not available at later gestations.	Any context.
4	Booking midwife verifies data and runs Preterm Birth assessment.	Face to face, telephone or virtual.	During booking appointment.	Antenatal clinic, GP surgery or woman's home.
5	Booking midwife explains risk assessment and arranges transvaginal ultrasound scan for measurement of cervical length or referral to preterm service, if required.			
6	Midwife verifies test results (BP, 1 st trimester CRL, uterine artery dopplers, PAPP-A) and runs Placental Function assessment.	Face to face, telephone or virtual.	Booking up to 16 weeks gestation, when 1 st trimester scan complete and PAPP-A blood results are available.	Booking or subsequent antenatal appointment in antenatal clinic, GP surgery or woman's home.
7	Midwife counsels woman on assessment result and organises extra scans and aspirin prescription, if required			
8	Woman experiences symptoms of possible preterm labour.	Individual experience	23 ⁺⁰ -34 ⁺⁶ weeks gestation	Any context
9	Midwife or doctor carries out assessment including quantitative fetal fibronectin and/or cervical length measurement.	Face to face.		Maternity assessment unit/triage/labour ward.
10	Woman notices changes in fetal movements.	Individual experience	From 28 ⁺⁰ weeks gestation	Any context
11	Midwife or doctor carries out Changes in Fetal Movement assessment and instigates further investigations as directed by Tool.	Face to face.		Maternity assessment unit/triage/labour ward.
12	Doctor counsels woman on timing of birth recommendations, if required.	Face to face, telephone or virtual.	Around 36weeks gestation	Antenatal clinic.

Objectives

- To understand the functioning of the Tommy's Clinical Decision Tool by specifying intervention description and implementation strategies, and examining implementation outcomes, mechanisms of impact, and contextual factors in four early adopter NHS Trusts.
- Assessment of acceptability and usability of the Tool, and acceptability of the personalised risk assessment and care recommendations it provides. This will be

- assessed from the perspectives of maternity service users, health professionals and organisations.
- Assessment of barriers and facilitators to successful implementation.
- Assessment of reach, i.e., whether the Tool is used by, and for risk assessment of, a representative sample of the population of maternity service users.
- Assessment of fidelity, i.e., whether the Tool is used and implementation proceeds as expected.
- Identification of unintended consequences.

Table 4 Conditions and issues covered in the Tommy's Clinical Decision Tool Information Hub

Information Hub Topic
Bleeding in early pregnancy
Nausea and vomiting during pregnancy
What does high and low risk mean?
Smoking in pregnancy
Alcohol in pregnancy
Healthy eating in pregnancy
Caffeine intake in pregnancy
Exercise in pregnancy
Mental wellbeing in pregnancy
Symptoms to look out for in pregnancy
High blood pressure (hypertension) and pre-eclampsia
Vaginal bleeding in pregnancy
Low-lying placenta after 20 weeks of pregnancy (placenta praevia)
Early labour (labour before 37 weeks of pregnancy)
Corticosteroids (steroids) in pregnancy
When your waters break
Changes in your baby's movement
Gestational diabetes
Intrahepatic cholestasis of pregnancy (Itching in pregnancy)
Having a small baby (fetal growth restriction)
Planned caesarean birth
Induction of labour (also known as "induction" or "induced labour")
Baby in the breech position
Group B Streptococcus (GBS)

Study design

This project is a mixed-methods implementation evaluation study, which will be carried out in four NHS Trusts (five hospital sites). It consists of three Work Packages: 1. Evaluation of healthcare professionals and providers views and experience of using the Tommy's Clinical Decision Tool; 2. Evaluation of women's views and experience of the tool and the maternity care it has influenced and 3. Evaluation of reach and fidelity.

Implementation outcome measures

1. Acceptability and usability will be measured using qualitative data from focus groups and interviews with women and healthcare professionals/providers and study specific online questionnaires developed for this study (Additional Files 1, 2 and 3), that include the mHealth App Usability Questionnaire (MAUQ) for Standalone mHealth Apps [25]. This will include evaluation of an implementation toolkit (i.e. a collection of resources to aid training and implementation).

2. Barriers and facilitators will be measured using qualitative data from focus groups and interviews and online questionnaires.
3. Reach will be measured using qualitative data from focus groups and interviews, online questionnaires and comparison of aggregate data collected through the Tool with Trust maternity data.
4. Fidelity will be measured using qualitative data from focus groups and interviews, online questionnaires, comparison of aggregate data collected through the Tool with Trust maternity data, and site records of training activity.
5. Unintended consequences will be measured using qualitative data from focus groups and interviews, online questionnaires and data collected through the Tommy's Clinical Decision Tool and Trust maternity statistics. The relationship between the work packages and implementation outcomes is demonstrated in Fig. 4.

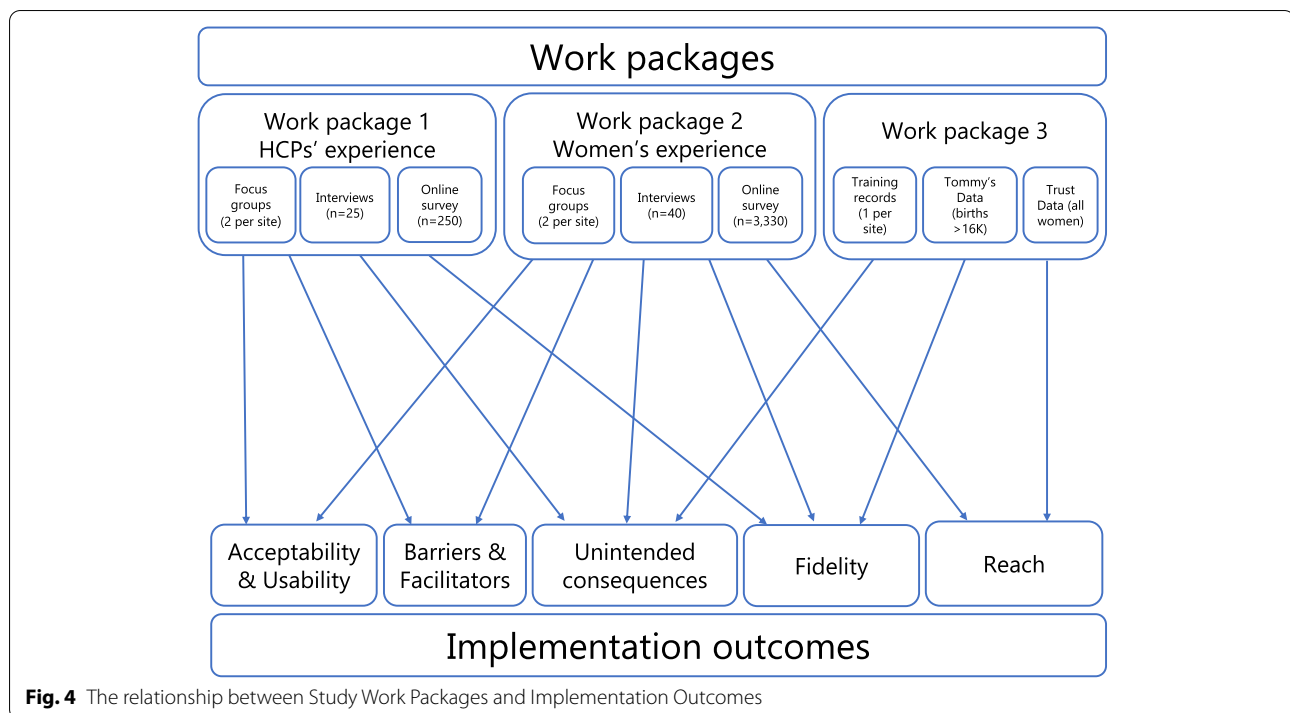
Participants

Work Package 1 – Health professionals' and providers' views and experience

HCPs will be invited to complete an online questionnaire through posters/flyers and by local Champions, Research Midwives and by Trust email. Those who are willing to consider further participation in interviews or focus groups will be selected through a process of purposive sampling. This method of sampling has been chosen to ensure that the experiences of a wide range of HCPs are investigated in more detail, e.g., clinicians with little or much experience, those in management of staff or IT systems. Five HCPs from each site will be interviewed, and 5–8 HCPs will be invited to one of two focus groups per site. In total, there will be 25 HCP interviews, and 10 focus groups of 5–8 HCPs.

Work Package 2 – Women's views and experience

All pregnant women choosing to book their maternity care at participating Trusts and who register to use the tool at or before their booking appointment will be eligible. Potential participants will be invited through posters/flyers and direct contact. When the women first register to use the tool they will see a page of text explaining the study. They will be asked to consider agreeing to their contact details and expected and actual date of birth of their baby being passed to researchers. All women agreeing to contact by researchers will be texted and/or emailed an invitation to complete an online questionnaire during pregnancy, and after their baby is born. At the end of the online questionnaires,



participants will be given the opportunity to enter their name and email address if they are willing to consider being interviewed or participating in a focus group. To ensure a wide range of experiences and views are captured during focus groups and interviews, purposive sampling will be used to identify women with different demographic characteristics, (e.g., age group, ethnic group, parity, Index of Multiple Deprivation (IMD) decile); risk status, as determined by the Tommy's Clinical Decision Tool (i.e., low, moderate, high); pregnancy outcome (i.e., late miscarriage or stillbirth, neonatal death, preterm birth, live birth). Based on numbers of births in participating Trusts, with a 20% response rate over 9 months data collection period, we estimate that 3,330 women will complete at least one online questionnaire. Of these, 40 women will be invited for interview and 5–8 will be invited to one of two focus groups per site. Women whose preferred language is not English will be offered the opportunity to have the interview conducted through an interpreter.

Work Package 3 – Evaluation of reach and fidelity

The number of records included in the aggregate data will depend on final numbers of women booking for maternity care and giving birth to their babies at the early adopter Trusts. Estimated sample size ($n = 16,663$ births) was based on average number of births at participating Trusts recorded on NHS Digital's National Maternity Dataset.

Data collection

Qualitative data

The semi-structured interviews will last around one hour and be organised at a time and place convenient to the participant. Focus groups will last around one and a half hours and be carried out either virtually (e.g. MSTeams or Zoom) or face-to-face. An interview schedule and topic guides will be used to direct the discussion on the participant's views and experience of using the Tool, as well as their understanding of the rationale for risk assessment and recommendations for care. We will also explore how information provided through the tool was used by women to inform decisions about their care. Interviews and focus groups will be recorded on an encrypted digital recording device and/or the online platform, and uploaded to a secure server managed by a University approved transcription service. During the process of transcription, names and any information that may lead to identification of participants will be removed or changed to maintain anonymity. Transcripts will be produced and downloaded by the researchers who will store them on a secure University Microsoft Sharepoint site specific to this study.

Online questionnaires

Online questionnaires will be managed through Qualtrics, a University approved online survey management system. The first page of the questionnaire will have brief information about the study and a link to the full

participant information sheet. Participants will be asked to confirm they have read this information sheet and consent to continue. If willing, they will be asked questions about their experience of using the Tool, risk assessment, recommended care pathways and their pregnancy outcomes. They will also be asked about their use of the Tool's Information Hub and whether it influenced any decisions they made about seeking further advice or care. The computer device identification number (IP address) will be kept in order to minimise the chance of the same participant completing a duplicate questionnaire. Other than the IP address, no identifiers will be stored, unless entered by women who consent to be contacted about the interviews or focus groups.

Aggregate data

Aggregate data for Work Package 3, exploring reach and fidelity, will be obtained through the Tool developer or from NHS Digital. All women booked for maternity care will be advised that their clinical data is managed according to standards approved by NHS Digital and those who do not wish their data to be used for research purposes can opt-out. This information will be made available to them via their booking letter and when they register on the Tool. Aggregate data on characteristics and outcomes of all women receiving maternity care at participating Trusts will be obtained either from individual Trusts or through NHS Digital's publicly available Maternity Services Data Set (MSDS). The data will be used to describe and explore factors as listed in Table 5.

Data analysis

Qualitative data

Qualitative data collected through interviews and focus groups will be managed through NVivo qualitative data software and analysed using a thematic framework approach. The Framework approach [26] is a method of qualitative data analysis designed to generate findings that can inform practice and policy and the steps used within this approach lend themselves well to the data likely to be generated in this study. Data analysis will be informed by the NASSS (Non-adoption or Abandonment of technology by individuals and difficulties achieving Scale-up, Spread and Sustainability) framework [27], in addition to inductive analysis (where the researcher is open to new themes emerging from the data). This framework was chosen because it is an evidence-based, theory-informed and pragmatic framework to help predict and evaluate the success of a technology-supported health or social care program. A proportion of transcripts and identification of themes will be reviewed by a second experienced researcher to increase validity.

Online questionnaires

Statistical software will be used to explore and analyse the quantitative data gathered through the questionnaires. Participant demographic characteristics and risk profiles will be explored using descriptive statistics (i.e., frequencies and percentages) and groups will be compared using multivariate and multilevel logistic regression models. Regression models will be adjusted to account for maternal demographic and risk characteristics. Differences between groups will be considered statistically significant if the p value is ≤ 0.05 . Qualitative data gathered through free text boxes, (e.g., answers to the question: "Is there anything else you would like to tell us about your experience of using the tool?") will be analysed using qualitative thematic analysis.

Aggregate data

Participant characteristics, risk status, care pathways and outcomes will be explored using descriptive statistics (i.e., frequencies and percentages) and groups (i.e. those registered on the Tool and all maternity service users) will be compared using Pearson's Chi-squared tests and multi-level logistic regression models. Regression models will be adjusted to account for maternal demographic and risk characteristics. Differences between groups will be considered statistically significant if the p value is ≤ 0.05 . Apparent differences will be explored and described in detail.

Ethical issues

Potential distress to participants

It is possible that some women may find recounting their experience of pregnancy and birth distressing, particularly those experiencing poor outcomes. In order to minimise any potential distress, the email texts and online questionnaires were sensitively composed and were approved by our PPI group, some of whom have experienced poor pregnancy outcomes themselves. Participants will be reminded that their participation is voluntary and they can withdraw at any time. The research team will assess whether significant risks are emerging during data collection. If they are, participants will be directed to a resources document with contact details of organisations and charities who offer support. The researcher will also offer to provide help in obtaining support from other sources, such as her GP.

Incentives

Healthcare professionals will be offered vouchers worth £10 for participating in interviews and £20 for participating in focus groups. Women completing the online questionnaires will be offered the opportunity to be entered into a draw for a £100 shopping voucher. Interview and focus group participants in Work Package 2 will be offered a thank-you voucher worth £20.

Table 5 Work Package 3: Reach and Fidelity, factors to be investigated**Factors to be investigated**

All data to be reported as overall and by maternity unit—then by:

1. Age (< 16, 16–19, 20–24, 25–29, 30–34, 35–39, 40–44, 45 + years)
2. Parity (nulliparous/multiparous)
3. Ethnic Group
4. Index of Multiple Deprivation (IMD)

Registration

Number verified for maternity care

% of women who verified their email address but did not proceed beyond the NHS Digital “use of data” page

% of women agreed to contact from researchers

% of women who had the data they had entered corrected by the HCP

Risk assessment (of verified women)

% of women where preterm birth risk assessment carried out

% of women where placental function risk assessment carried out

% of women who were not eligible for risk assessment (pre-existing diabetes, pre-existing hypertension, multiple pregnancy)

% of women where changes in fetal movements assessment was carried out

% of women where recurrent changes in fetal movements assessment was carried out

% of women where threatened preterm labour assessment was carried out

% of women where timing of birth assessment was carried out

% of women assessed to be (low/moderate/high) for preterm birth

% of women assessed to be (low/moderate/high) for placental dysfunction

Care pathway

% of women received aspirin when indicated

% of women referred for extra ultrasound scans when indicated

% of women referred to preterm service when indicated

% of women offered induction of labour when indicated

Information hub

% of women who accessed at least one Information Hub page

% of women who accessed each individual page

Pregnancy outcomes

% of women having live birth

% of women having miscarriage

% of women having neonatal death (at time of pregnancy outcome survey completed)

% of women having stillbirth

% of women having termination of pregnancy (surgical/ medical)

% women transferring care

% of women having birth < 34wks

% of women having birth < 37wks

% of induction of labour

% emergency caesarean section

% elective caesarean section

% of women having vaginal birth

% of women having assisted birth (ventouse/ forceps)

% of women discharged while baby remained in Neonatal Unit

% of women verified who had miscarriage, stillbirth, preterm birth or neonatal death

Public and patient involvement

The study's Public and Patient Involvement (PPI) Lead is a member of the Women's Network and the Women's Voices Involvement Panel. This group includes women

with lived experience of preterm birth, stillbirth and neonatal death, women with a usual birth experience representing those not immediately considered high risk, and women with no maternity experience representing the

views of first-time mothers. The group has been involved in the design and development of the Tommy's Clinical Decision Tool and this implementation evaluation study from inception, attending workshops and Community of Practice events. They have informed the design, language, communication of risk, user experience, functionality, patient information, implementation plans as well as study participant documents and data collection instruments.

Discussion

This study will evaluate the implementation of Phase II of the Tommy's National Centre for Maternity Improvements' Tommy's Clinical Decision Tool programme. The Tool is used for risk assessment and provides evidence-based care recommendations to reduce inequalities in service provision and, ultimately, stillbirth and preterm birth. Evaluating implementation in four early adopter maternity services gives us the opportunity to evaluate implementation processes and produce findings that will inform wider scale up as, all too often, the successful implementation of a healthcare intervention in one context is not necessarily replicated in others [28].

The Tommy's Clinical Decision Tool will allow maternity services to effectively implement the best evidenced-based care, including those pathways recommended in SBLCB v.2, with its additional element for reducing preterm birth. It will also, importantly, allow more effective targeting of these pathways through more accurate risk assessment. Widdows and colleagues [29] reported findings from a pragmatic study comparing clinical and process outcomes before and after implementation of the first version of the Saving Babies Lives Care Bundle. Although the stillbirth rate had fallen from 4.2 to 3.4 per 1,000 over the study period (aRR 0.80, (95% CI 0.70 to 0.91, $P < 0.001$), they were not able to confirm this was a direct result of the implementation of the care bundle. They did, however, report an increase in caesarean sections, inductions of labour, ultrasound scans, neonatal unit admissions and the proportion of small for gestational age infants detected. They recommended further prospective studies that could more rigorously evaluate the clinical and cost consequences of implementing SBLCB. Our evaluation of the Phase II implementation will allow us to answer some of the questions that remain unanswered by Widdows and colleagues [29], in a more rigorous prospective study. The next phase of the programme is a cluster RCT which will investigate the Tool's effect on clinical outcomes (including rates of stillbirth and preterm birth), service outcomes (e.g. number of ultrasound scans, rates of induction and caesarean sections) and cost consequences.

A major strength of this programme is that its driving force is truly multidisciplinary in nature: a collaboration

between maternity services users themselves, the professional bodies of the two main clinical disciplines in maternity care, academic expertise provided by several universities and the support of interested charities. Another strength is that the aims of the programme are in line with national policy, including the Maternity Transformation Programme [30] and the NHS Digital's Data and information strategy [31]. Trusts implementing the Tommy's Tool will also be able to claim a rebate from the Maternity Incentive Scheme (CNST) as the Tool is compliant with SBLCB.

We recognise that in its first iteration the Tommy's Clinical Decision Tool is limited by a number of factors. Firstly, it is only available in the English language. Secondly, the Tool is not yet fully interactive with Trust maternity information systems. While this remains the case, healthcare professionals need to record the risk assessments and care recommendations on the Trust maternity records. These are significant barriers to successful reach and scale up, however, these issues are being addressed and resolutions will be applied to future iterations of the Tool.

The findings of this study will be reported using the Standards for Reporting Implementation Studies (StaRI) guidelines [32]. We have provided detailed description of the Tommy's Clinical Decision Tool in this paper, but will report adaptations to the Tool, along with the implementation processes, in the main findings paper, according to the TIDieR guidelines for describing interventions [33].

Abbreviations

cCTG: Computerised cardiocotograph; CFM: Changed fetal movements; CL: Cervical length; CoP: Community of Practice; CRL: Crown rump length; fFN: Fetal fibronectin; HCP: Healthcare professional/provider; KCL: King's College London; MAUQ: MHealth App Usability Questionnaire; MoM: Multiple of the Median; NHS: National Health Service; PAPP-A: Pregnancy Associated Plasma Protein-A; PF: Placental Function; PPTL: Possible preterm labour; PTB: Preterm birth; RCT: Randomised controlled trial; SBLCB: Saving Babies Lives Care Bundle; ToB: Timing of birth; USS: Ultrasound scan; WP: Work package.

Supplementary Information

The online version contains supplementary material available at <https://doi.org/10.1186/s12884-022-04867-w>.

Additional file 1: HCP online questionnaire. Online questionnaire for completion by healthcare professionals.

Additional file 2: Antenatal questionnaire. Online questionnaire for completion by women participants before the birth of their baby.

Additional file 3: Postnatal questionnaire. Online questionnaire for completion by women participants after the birth of their baby.

Acknowledgements

The authors would like to sincerely thank the wider members of the Tommy's National Centre for Maternity Improvement Programme Delivery Team for their advice, input and administrative support (Namely: Alessandra D'Angelo, Carly Edwards, Emma Gilgunn-Jones, Suzanne Gowiely, Gbenga Kayode, Victoria Komolafe, Ruta Margaleta, Jo Tanner, Gemma Thurston and Dan

Wolstenholme) and the Women's Voices Involvement Group, who contributed their views and recommendations on the participant documents, focus group topic guide, interview schedule and design of the online questionnaires. Jane Sandall, at King's College London, is an NIHR Senior Investigator and is supported by the National Institute for Health Research (NIHR) Applied Research Collaboration South London (NIHR ARC South London) at King's College Hospital NHS Foundation Trust. The views expressed are those of the authors and not necessarily those of the NIHR or the Department of Health and Social Care. Early findings from this study were presented at the 2022 RCM Education and Research Conference [34].

Authors' contributions

JC and JS designed the study, with contributions, oversight, review and approval from all authors. All listed authors (DA, LB, CB, TD, SG, BH-L, AJ, EL, ES, BT, HW, CW and MV) contributed to development of the programme, the writing of the paper and have read and approved the final manuscript.

Funding

This project is funded by Tommy's charity (Registered charity no.1060508) and conducted by the Tommy's National Centre for Maternity Improvement: a joint initiative of the Royal College of Obstetricians & Gynaecologists and the Royal College of Midwives. Apart from funding, the funder has no role in this study.

Availability of data and materials

Not applicable. This paper describes a study protocol, and therefore contains no data.

Declarations

Ethics approval and consent to participate

The London-Bromley Research Ethics Committee approved the study (REC reference 21/PR/1029). The study will be conducted in compliance with the Research Governance Framework for Health and Social Care and Good Clinical Practice (GCP). The Chief Investigator will be responsible for the ongoing management of the study. The Sponsor will monitor and conduct audits on a selection of studies in its clinical research portfolio. Monitoring and auditing will be conducted in accordance with the UK Policy Framework for Health and Social Care 2017 and in accordance with the Sponsor's monitoring and audit procedures.

All participants (healthcare professionals/providers and women) participating in interviews or focus groups will be provided with participant information sheets and be required to give informed consent. This consent can be confirmed in writing or verbally, where the interview or focus group is being carried out virtually, and if women participants are unable to access the necessary technology (e.g. word processing or document scanning). Consent to completing the surveys will be confirmed by a consent statement and tick box on the online platform.

Consent for publication

Not applicable. This paper does not contain any individual person's data in any form.

Competing interests

JS is Head of Maternity and Midwifery Research at NHS England and NHS Improvement. EL is a member of the University of Bristol (UoB) and part of his salary until 31/7/2021 was paid by the PROMPT Maternity Foundation (PMF) to UoB. He has no conflict of interest since then. All other authors declare that they have no competing interests.

Author details

¹Department of Women and Children's Health, School of Life Course and Population Sciences, King's College London, 10th Floor, North Wing, St Thomas' Hospital, Westminster Bridge Road, London SE1 7EH, UK. ²Tommy's National Centre for Maternity Improvement, Royal College of Obstetricians and Gynaecologists/Royal College of Midwives, 10-18 Union Street, London SE1 1SZ, UK. ³Department of Oncology and Metabolism, University of Sheffield, The Jessop Wing, Tree Root Walk, Sheffield S10 2SF, UK. ⁴Royal College of Midwives, 10-18 Union Street, London SE1 1SZ, UK. ⁵Academic Women's Health Unit, University of Bristol, Bristol Medical School, Southmead Hospital, Bristol BS10 5NB, UK. ⁶Royal College of Obstetricians and Gynaecologists, 10-18 Union Street,

London SE1 1SZ, UK. ⁷Translational Health Sciences, University of Bristol, Bristol Medical School, Southmead Hospital, Bristol BS10 5NB, UK. ⁸Maternal Medicine Department, St George's University Hospitals NHS Foundation Trust, Blackshaw Road, London SW17 0QT, UK. ⁹Vascular Biology Research Centre, Molecular and Clinical Sciences Research Institute, St George's University of London, Cranmer Terrace, London SW17 0QT, UK. ¹⁰Fetal Medicine Unit, St George's University Hospitals NHS Foundation Trust, Blackshaw Road, London SW17 0QT, UK. ¹¹PROMPT Maternity Foundation, Department of Women's Health, The Chilterns, Southmead Hospital, Bristol BS10 5NB, UK. ¹²Mothers for Mothers, New Fulford Family Centre, Gatehouse Avenue, Bristol BS13 9AQ, UK.

Received: 5 May 2022 Accepted: 23 June 2022

Published online: 15 August 2022

References

- Jardine J, Walker K, Gurol-Urganci I, Webster K, Muller P, Hawdon J, et al. Adverse pregnancy outcomes attributable to socioeconomic and ethnic inequalities in England: a national cohort study. *Lancet*. 2021;398(10314):1905–12.
- Aughey H, Blotkamp A, Carroll F, Geary R, Gurol-Urganci I, Harris T, Hawdon J, Heighway E, Jardine J, Knight H, Mamza L. National Maternity and Perinatal Audit: Clinical report 2019. Based on births in NHS maternity services between 1 April 2016 and 31 March 2017. London: RCOG; 2019 Oct. Available from: <https://maternityaudit.org.uk/pages/reports>.
- Alderwick H, Dixon J. NHS The Long Term Plan. *British Medical Journal Publishing Group*; 2019. Available from: www.longtermplan.nhs.uk/publication/nhs-long-term-plan/.
- NHS England. Saving Babies Lives: a care bundle for reducing stillbirths. 2016. Available from: <https://www.england.nhs.uk/wp-content/uploads/2016/03/saving-babies-lives-car-bundl.pdf>.
- NHS England. Saving Babies' Lives Version 2: a care bundle for reducing perinatal mortality. 2019. Available from: <https://www.england.nhs.uk/wp-content/uploads/2019/07/saving-babies-lives-care-bundle-version-two-v5.pdf>.
- Department of Health and Social Care. Safer Maternity Care: The National Maternity Safety Strategy—Progress and Next Steps. London: The Stationery Office; 2017. Available from: <https://www.gov.uk/government/publications/safer-maternity-care-progress-and-next-steps>.
- Royal College of Obstetricians and Gynaecologists. Each Baby Counts: 2020 Final Progress Report. London: RCOG; 2021. Available from: <https://www.rcog.org.uk/globalassets/documents/guidelines/research-audit/each-baby-counts/ebc-2020-final-progress-report.pdf>.
- Roberge S, Bujold E, Nicolaidis KH. Aspirin for the prevention of preterm and term preeclampsia: systematic review and metaanalysis. *Am J Obstet Gynecol*. 2018;218(3):287–93.
- Stewart LA, Simmonds M, Duley L, Dietz KC, Harden M, Hodkinson A, Llewellyn A, Sharif S, Walker R, Wright K. Evaluating progestogens for prevention of preterm birth international collaborative (EPPPIC) individual participant data (IPD) meta-analysis: protocol. *Syst Rev*. 2017;6(1):1–7.
- Alfirevic Z, Stampalija T, Medley N, Alfirevic Z. Cervical stitch (cerclage) for preventing preterm birth in singleton pregnancy. *Cochrane database of systematic reviews*; 2017. Available from: <https://www.cochranelibrary.com/cdsr/doi/https://doi.org/10.1002/14651858.CD008991.pub3>.
- Guy GP, Leslie K, Diaz Gomez D, Forenc K, Buck E, Khalil A, Thilaganathan B. Implementation of routine first trimester combined screening for pre-eclampsia: a clinical effectiveness study. *BJOG*. 2021;128(2):149–56. Available from: <https://onlinelibrary.wiley.com/doi/abs/10.1111/1471-0528.16361>.
- Beta J, Akolekar R, Ventura W, Syngelaki A, Nicolaidis KH. Prediction of spontaneous preterm delivery from maternal factors, obstetric history and placental perfusion and function at 11–13 weeks. *Prenat Diagn*. 2011;31(1):75–83. Available from: <https://api.istex.fr/ark:/67375/WNG-TCBWG89G-X/fulltext.pdf>.
- Carter J, Seed PT, Watson HA, David AL, Sandall J, Shennan AH, Tribe RM. Development and validation of predictive models for QuiPP App v. 2: tool for predicting preterm birth in women with symptoms of threatened preterm labor. *Ultrasound Obstet Gynecol*. 2020;55(3):357–67.
- NHS England. National Maternity Review. Better Births; Improving Outcomes of Maternity Services in England. 2016. London: National Health Service.

15. Orton M, Agarwal S, Muhoza P, Vasudevan L, Vu A. Strengthening delivery of health services using digital devices. *Glob Health Sci Pract*. 2018;6(Supplement 1):S61-71. Available from: <https://www.ncbi.nlm.nih.gov/pubmed/30305340>.
16. Lobach D, Sanders GD, Bright TJ, Wong A, Dhurjati R, Bristow E, Bastian L, Coeytaux R, Samsa G, Hasselblad V, Williams JW. Enabling health care decisionmaking through clinical decision support and knowledge management. *Evid Rep Technol Assess*. 2012;(203):1–784. Available from: <https://www.ncbi.nlm.nih.gov/pubmed/23126650>.
17. Meertens LJ, van Montfort P, Scheepers HC, van Kuijk SM, Aardenburg R, Langenveld J, van Dooren IM, Zwaan IM, Spaanderman ME, Smits LJ. Prediction models for the risk of spontaneous preterm birth based on maternal characteristics: a systematic review and independent external validation. *Acta Obstet Gynecol Scand*. 2018;97(8):907–20. Available from: <https://www.narcis.nl/publication/RecordID/oai:cris.maastrichtuniversity.nl:publications%2F4660bf66-cef8-4994-af53-a411fe39566a>.
18. Meertens LJ, Scheepers HC, van Kuijk SM, Aardenburg R, van Dooren IM, Langenveld J, van Wijck AM, Zwaan I, Spaanderman ME, Smits LJ. External validation and clinical usefulness of first trimester prediction models for the risk of preeclampsia: a prospective cohort study. *Fetal Diagn Ther*. 2019;45(6):381–93.
19. Tan MY, Wright D, Syngelaki A, Akolekar R, Cicero S, Janga D, Singh M, Greco E, Wright A, Maclagan K, Poon LC. Comparison of diagnostic accuracy of early screening for pre-eclampsia by NICE guidelines and a method combining maternal factors and biomarkers: results of SPREE. *Ultrasound Obstet Gynecol*. 2018;51(6):743–50. Available from: <https://onlinelibrary.wiley.com/doi/abs/10.1002/uog.19039>.
20. Rolnik DL, Wright D, Poon LC, O’Gorman N, Syngelaki A, de Paco Matalana C, Akolekar R, Cicero S, Janga D, Singh M, Molina FS. Aspirin versus placebo in pregnancies at high risk for preterm preeclampsia. *N Engl J Med*. 2017;377(7):613–22. <https://doi.org/10.1056/NEJMoa1704559>.
21. Watson HA, Carter J, Seed PT, Tribe RM, Shennan AH. The QUIPP App: a safe alternative to a treat-all strategy for threatened preterm labor. *Ultrasound Obstet Gynecol*. 2017;50(3):342–6 (2017;50:342–6).
22. World Health Organization. Monitoring and evaluating digital health interventions: a practical guide to conducting research and assessment. Geneva: World Health Organization; 2016. Available here: <https://apps.who.int/iris/handle/10665/252183>. License: CC BY-NC-SA 3.0 IGO.
23. Moore GF, Audrey S, Barker M, Bond L, Bonell C, Hardeman W, Moore L, O’Cathain A, Tinati T, Wight D, Baird J. Process evaluation of complex interventions: Medical Research Council guidance. *BMJ*. 2015;350. <https://doi.org/10.1136/bmj.h1258>.
24. Skivington K, Matthews L, Simpson SA, Craig P, Baird J, Blazeby JM, Boyd KA, Craig N, French DP, McIntosh E, Petticrew M. A new framework for developing and evaluating complex interventions: update of Medical Research Council guidance. *BMJ*. 2021;30:374.
25. Zhou L, Bao J, Setiawan IM, Saptono A, Parmanto B. The mHealth App Usability Questionnaire (MAUQ): development and validation study. *JMIR Mhealth Uhealth*. 2019;7(4):e11500.
26. Ritchie J, Spencer L. Qualitative data analysis for applied policy research. Thousand Oaks: Sage; 2002. p. 305–29.
27. Greenhalgh T, Wherton J, Papoutsi C, Lynch J, Hughes G, Hinder S, Fahy N, Procter R, Shaw S. Beyond adoption: a new framework for theorizing and evaluating nonadoption, abandonment, and challenges to the scale-up, spread, and sustainability of health and care technologies. *J Med Internet Res*. 2017;19(11):e8775. Available from: <https://www.ncbi.nlm.nih.gov/pubmed/29092808>.
28. Damschroder LJ, Aron DC, Keith RE, Kirsh SR, Alexander JA, Lowery JC. Fostering implementation of health services research findings into practice: a consolidated framework for advancing implementation science. *Implement Sci*. 2009;4(1):1–5. Available from: <https://www.ncbi.nlm.nih.gov/pubmed/19664226>.
29. Widdows K, Roberts SA, Camacho EM, Heazell AE. Stillbirth rates, service outcomes and costs of implementing NHS England’s Saving Babies’ Lives care bundle in maternity units in England: a cohort study. *PLoS One*. 2021;16(4):e0250150.
30. NHS England. Maternity Transformation Programme. Available from: <https://www.england.nhs.uk/mat-transformation/>. [Cited 2022].
31. NHS Digital. Data and information strategy v.1. Leeds: Health and Social Care Information Centre. Available from: <https://digital.nhs.uk/data-and-information/nhs-digital-data-and-information-strategy>.
32. Pinnock H, Barwick M, Carpenter CR, Eldridge S, Grandes G, Griffiths CJ, Rycroft-Malone J, Meissner P, Murray E, Patel A, Sheikh A. Standards for reporting implementation studies (StaRI) statement. *BMJ*. 2017;356. Available from: <https://doi.org/10.1136/bmj.i6795>.
33. Hoffmann TC, Glasziou PP, Boutron I, Milne R, Perera R, Moher D, Altman DG, Barbour V, Macdonald H, Johnston M, Lamb SE. Better reporting of interventions: template for intervention description and replication (TIDieR) checklist and guide. *BMJ*. 2014;7:348.
34. Royal College of Midwives Education & Research conference brochure: Oral and poster presentation . abstracts. 2022. RCM: London. Available from: <https://www.rcm.org.uk/media/5942/midirs-rcm-conference-supplement.pdf>

Publisher’s Note

Springer Nature remains neutral with regard to jurisdictional claims in published maps and institutional affiliations.

Ready to submit your research? Choose BMC and benefit from:

- fast, convenient online submission
- thorough peer review by experienced researchers in your field
- rapid publication on acceptance
- support for research data, including large and complex data types
- gold Open Access which fosters wider collaboration and increased citations
- maximum visibility for your research: over 100M website views per year

At BMC, research is always in progress.

Learn more biomedcentral.com/submissions

