



Deposited via The University of Sheffield.

White Rose Research Online URL for this paper:

<https://eprints.whiterose.ac.uk/id/eprint/189928/>

Version: Published Version

Article:

Hughes, A.J., Bull, L.A., Gardner, P. et al. (2022) On robust risk-based active-learning algorithms for enhanced decision support. *Mechanical Systems and Signal Processing*, 181. 109502. ISSN: 0888-3270

<https://doi.org/10.1016/j.ymssp.2022.109502>

Reuse

This article is distributed under the terms of the Creative Commons Attribution (CC BY) licence. This licence allows you to distribute, remix, tweak, and build upon the work, even commercially, as long as you credit the authors for the original work. More information and the full terms of the licence here:

<https://creativecommons.org/licenses/>

Takedown

If you consider content in White Rose Research Online to be in breach of UK law, please notify us by emailing eprints@whiterose.ac.uk including the URL of the record and the reason for the withdrawal request.



On robust risk-based active-learning algorithms for enhanced decision support

A.J. Hughes^{a,*}, L.A. Bull^b, P. Gardner^a, N. Dervilis^a, K. Worden^a

^a Dynamics Research Group, Department of Mechanical Engineering, University of Sheffield, Sheffield, S1 3JD, UK

^b The Alan Turing Institute, The British Library, 96 Euston Road, London, NW1 2DB, UK

ARTICLE INFO

Communicated by E. Chatzi

Keywords:

Decision-making
Active learning
Value of information
Structural health monitoring
Sampling bias
Digital twins
Risk

ABSTRACT

Classification models are a fundamental component of physical-asset management technologies such as structural health monitoring (SHM) systems and digital twins. Previous work introduced *risk-based active learning*, an online approach for the development of statistical classifiers that takes into account the decision-support context in which they are applied. Decision-making is considered by preferentially querying data labels according to *expected value of perfect information* (EVPI). Although several benefits are gained by adopting a risk-based active learning approach, including improved decision-making performance, the algorithms suffer from issues relating to sampling bias as a result of the guided querying process. This sampling bias ultimately manifests as a decline in decision-making performance during the later stages of active learning, which in turn corresponds to lost resource/utility.

The current paper proposes two novel approaches to counteract the effects of sampling bias: *semi-supervised learning*, and *discriminative classification models*. These approaches are first visualised using a synthetic dataset, then subsequently applied to an experimental case study, specifically, the Z24 Bridge dataset. The semi-supervised learning approach is shown to have variable performance; with robustness to sampling bias dependent on the suitability of the generative distributions selected for the model with respect to each dataset. In contrast, the discriminative classifiers are shown to have excellent robustness to the effects of sampling bias. Moreover, it was found that the number of inspections made during a monitoring campaign, and therefore resource expenditure, could be reduced with the careful selection of the statistical classifiers used within a decision-supporting monitoring system.

1. Introduction

Statistical pattern recognition (SPR) has been established as the state of the art for making data-driven predictions in the context of physical-asset management technologies such as structural health monitoring (SHM) systems [1] and digital twins [2,3]. Statistical classifiers are a fundamental component of the SPR approach to these decision-support technologies — enabling the categorisation of acquired data into groups, or classes. For example, in the context of SHM, by associating the target classes of a classifier with salient health-states (e.g. undamaged, nascent damage, severe damage), inferences can be made regarding the condition of a structure of interest. Recent research has focussed on utilising probabilistic predictions from statistical classifiers in risk-based approaches for supporting the operation and maintenance (O&M) decision processes engineers are tasked with when managing structural assets [4–6]. Defined as a product of probability and cost, risk is akin to negative *expected utility*. Decisions can then be made by selecting strategies that maximise expected utility, or minimise risk.

* Corresponding author.

E-mail address: ajhughes2@sheffield.ac.uk (A.J. Hughes).

For SHM and other engineering decision-support applications, the traditional *supervised* and *unsupervised* machine learning paradigms are of limited applicability. This predicament arises because, oftentimes, there is a scarcity of labelled data corresponding to salient damage, operational, and environmental states of a structure.

Active learning is an approach to developing statistical classifiers that is well-suited to online decision-support applications and has seen some application in fields such as SHM [7–9]. Within an active-learning framework, label information is obtained for otherwise unlabelled data via a querying process, such that models may subsequently be learned in a supervised manner. Typically, the querying process is guided according to an uncertainty measure (e.g. entropy or likelihood [7]) given the current classification model. In the context of SHM, new label information queried during the active-learning process corresponds to diagnoses provided by an engineer, following an inspection of a structure. When a statistical classifier is being used within a predefined decision process, *risk-based active learning* can be employed [10]. Serving as preliminary work to the current paper, [10], introduces a risk-based formulation of active learning in which queries are guided according to the *expected value of information* (EVPI) of health-state labels for incipient data. The pre-existing paper contains details on how EVPI may be calculated in the context of SHM decision processes, and how EVPI can be integrated into the active learning process in order to mandate structural inspections. The paper also shows, using two datasets, that decision performance can be more rapidly improved over the course of a monitoring campaign by learning classifiers from data queried according to EVPI. Further details of the work presented in [10] are provided in Section 2 of the current paper. As mentioned, the risk-based approach to active learning requires a predefined decision process. While a brief overview of how such decision processes may be defined is presented in [10], for a detailed explanation of this topic the reader is directed to [6], which comprehensively outlines a methodology for specifying decision processes with reference to a paradigm for SHM that incorporates elements of probabilistic risk assessment such as failure mode analysis using fault trees.

While being apt for dealing with challenges associated with online decision-support systems, active learning algorithms are not without their own pitfalls. Notably, generative models (such as those used in [7,10]), learned via active learning, are often susceptible to sampling bias because the preferential nature of the querying process causes inequity in the amount of data observed for each class. This problem is pertinent, as sampling bias has been found to degrade the performance of classifiers, and decision-making agents alike [7,10,11].

1.1. Novel contribution

The current paper proposes and examines two novel methods for addressing sampling bias in active-learning algorithms for asset management technologies, and particularly focusses on the performance of decision-makers utilising the learned classifiers in the context of SHM decision-support.

The first approach involves adapting the algorithm presented in [10], via the introduction of semi-supervised learning. Here, two formulations of semi-supervised learning are considered; expectation-maximisation with respect to the generative model learned in a supervised manner, and latent-state smoothing with respect to the hidden-Markov model that underpins the asset-management decision processes. The second novel approach replaces the generative Gaussian mixture model, used in previous literature [7,10], with discriminative classifiers. Specifically, two formulations of multiclass relevance vector machines (mRVMS) [12] are considered. In total, these approaches result in four new formulations of risk-based active learning. Finally, further novelty is provided in the form of valuable discussions on the role of statistical classifiers in asset management technology, and how decision-support can be improved via classifier design.

The contents of the current paper are as follows. Background theory is provided for risk-based active learning in Section 2. The effects of sampling bias are highlighted using a synthetic dataset in Section 3. Section 4 details the aforementioned approaches to dealing with sampling bias. Section 5 introduces the Z24 Bridge dataset as a case study and presents results obtained by applying the proposed methods for addressing sampling bias. A broader discourse on the selection of classifiers for decision-support applications is offered in Section 6. Finally, concluding remarks are provided in Section 7.

2. Risk-based active learning

In general, classification is the problem of categorising observations $\mathbf{x} \in X$ according to descriptive labels $y \in Y$, where X and Y denote the *input space* and *label space*, respectively. In learning a statistical classifier, one wishes to obtain a robust mapping from the input space to the label space, i.e. $f : X \rightarrow Y$. A probabilistic perspective can be adopted by defining inputs as D -dimensional random vectors, such that $X = \mathbb{R}^D$, and descriptive labels as discrete random variables, such that $Y = \{1, \dots, K\}$, where K is the number of target classes. In the context of SHM, inputs \mathbf{x}_i correspond to discriminative features extracted from data acquired via a monitoring system. A descriptive label y_i represents structural health, environmental, or operational states pertinent to the O&M decision process associated with a structure.

Traditionally, statistical classifiers are learned via one of two main paradigms; *supervised* or *unsupervised* machine learning.

In the supervised approach, the mapping f can be learned directly with the use of a fully-labelled training dataset D_l where [13],

$$D_l = \{(\mathbf{x}_i, y_i) | \mathbf{x}_i \in X, y_i \in Y\}_{i=1}^n \quad (1)$$

for n collected data points.

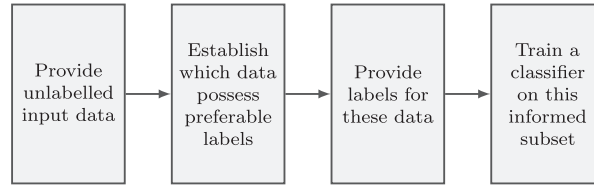


Fig. 1. A general active learning heuristic.

In contrast, unsupervised learning techniques (e.g. novelty detection and clustering) seek to identify patterns and structure within unlabelled datasets D_u , where,

$$D_u = \{\tilde{x}_i | \tilde{x}_i \in X\}_{i=1}^m \quad (2)$$

for m collected data points and where \tilde{x}_i denote measured data that are unlabelled.

Unfortunately, when considering decision support problems for SHM, the efficacy of both supervised and unsupervised learning techniques are diminished. This is because complete labelled datasets are seldom available prior to the implementation of a monitoring system; specifically, there tends to be a dearth of data corresponding to damage states of the structure. This issue precludes supervised learning because of the absence of comprehensive training targets. Moreover, the issue renders the unsupervised approach inapplicable because the learned patterns within data are without the contextual information necessary for decision-making. An in-depth discussion on the application of supervised and unsupervised machine learning to SHM may be found in [7].

2.1. Active learning for SHM

Active learning is a form of *partially-supervised* learning. Partially supervised learning is characterised by the utilisation of both labelled and unlabelled data such that,

$$D = D_l \cup D_u \quad (3)$$

Active learning algorithms construct a labelled data set D_l , by querying labels for the unlabelled data in D_u . Labels for incipient data are queried preferentially according to some measure of their desirability. Models are then trained in a supervised manner using D_l . A general heuristic for active learning is presented in Fig. 1.

There exists few examples of works applying active learning in the context of health and performance monitoring. In [14], active sampling was used in conjunction with artificial neural networks for image classification tasks related to the detection of defects in civil structures. A methodology for tool condition monitoring that incorporates entropy-based active sampling with a Bayesian convolutional neural network is proposed in [8]. Moreover, in [9], a damage progression model based upon a particle filter aided by actively selected data is presented. In [7], an online active learning approach is shown to overcome the primary challenge for classifier development in the context of SHM — initial scarcity of comprehensive labelled data. This result is achieved by the construction of a labelled dataset via a querying process that corresponds to the inspection of a structure by an engineer to determine its health state. In [7], measures of informativeness, high entropy and low likelihood given the current model, are used to guide querying. In [10], an alternative risk-based approach to active learning is proposed in which *expected value of perfect information* (EVPI) is used as a measure to guide querying. The remainder of the current paper will focus on the risk-based formulation of active learning.

2.2. Expected value of perfect information

As aforementioned, the risk-based approach to active learning is characterised by the use of an expected value of information as a measure to guide label querying.

The expected value of perfect information (EVPI) can be interpreted as the price that a decision-maker should be willing to pay in order to gain access to perfect information of an otherwise unknown or uncertain state. Here, it should be clarified that the terminology ‘perfect information’ refers to ground-truth states observed without uncertainty. A more formal definition of EVPI can be obtained by considering influence diagram representations of decision processes.

Influence diagrams are a form of probabilistic graphical model (PGM), that augment Bayesian networks with decision and utility nodes. Within the influence diagram representation of a decision process, random variables are denoted by circular nodes, decisions are denoted by rectangular nodes, and utilities are denoted by rhombic nodes. Observed variables are denoted with shaded nodes. Edges from random variable/decision nodes to random variable/utility nodes denote the conditional dependence of the latter on the former. Edges from random variable/decision nodes to decision nodes are *informational links* and prescribe an order in which observations and decisions are made. Optimal decisions may be found via an influence diagram by conducting probabilistic inference within the model and maximising expected utility. For comprehensive tutorials on PGMs, including algorithms for inference within Bayesian networks and influence diagrams, the reader is directed to [15–17].

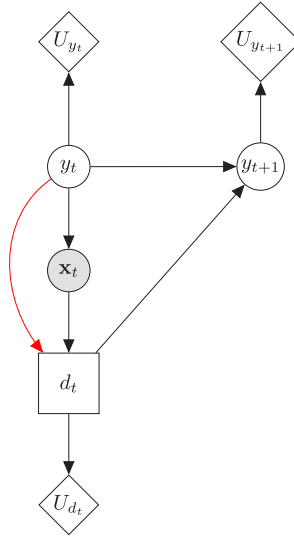


Fig. 2. An influence diagram of a simplified SHM maintenance decision. The red edge denotes an informational link that implies inspection prior to maintenance and is present in $I_{y \rightarrow d_t}$ and absent in I . U denotes a utility function and d denotes a decision.

Given an influence diagram representation of a decision process I containing a decision d and dependent on a variable y , the expected value of observing y with perfect information prior to making decision d is given by,

$$\text{EVPI}(d|y) := \text{MEU}(I_{y \rightarrow d}) - \text{MEU}(I) \quad (4)$$

where $I_{y \rightarrow d}$ is a modified influence diagram incorporating an additional informational link from y to d and MEU denotes the maximum expected utility. An example calculation of EVPI is presented in [10].

An example influence diagram for a simple SHM maintenance decision process is shown in Fig. 2. In this example, there is a structural health state y_t that evolves in time. The current health state is inferred from an observation of features x_t via a statistical classifier. The forecasted health state y_{t+1} is conditionally dependent on y_t and the action is decided for decision d_t . Finally, there are utility functions conditionally dependent on the health-states and actions. By applying Eq. (4) to this decision process, the EVPI for a label y_t can be determined. Here, it is worth recognising that value of information arises from uncertainty in classifier predictions $p(\bar{y}_t = k|\bar{x}_t)$ between states warranting differing (optimal) courses of action.

2.3. A risk-based active learning algorithm

A convenient criterion for mandating structural inspections can be derived from the EVPI. Simply, if the EVPI of a label y_t for a data point \bar{x}_t exceeds the cost of making an inspection C_{ins} then the ground-truth for y_t should be obtained prior to d_t . Subsequently, the labelled dataset \mathcal{D} can be extended to include the newly-acquired data-label pair (\bar{x}_t, y_t) , and the classifier retrained. While the assumption of perfect information may not hold in all cases, the principles and methodologies discussed in the current paper hold in general for value of information. Furthermore, the perfect information assumption may be relaxed via the introduction of an additional probabilistic model that quantifies uncertainty in inspections [18,19].

A flow chart detailing the risk-based active learning process presented in [10], is shown in Fig. 3.

Adopting a risk-based approach to active learning allows one to learn statistical classifiers with consideration for the decision support contexts in which they may be employed. In [10], it is demonstrated that this provides a cost-efficient manner for classifier development.

3. Effects of sampling bias

Although active learning has been found to be an effective way of constructing highly informative and valuable datasets when labels are costly to obtain, such algorithms are somewhat of a double-edged sword because of a phenomenon known as *sampling bias* [11,20]. Sampling bias is an issue associated with machine learning in general; bias is introduced into models via training data when certain subpopulations have a higher or lower chance of being represented in said data. Specifically, sampling bias arises in active learning because of the preferential nature of the querying schemes. In active learning, data labels are obtained for specific regions of a feature space, according to the specified query measures and heuristics. Consequently, unrepresentative training datasets are formed in which the data diverges from the underlying generative distribution. In some applications, sampling bias can degrade the performance of classifiers [11,20]. Risk-based approaches to active learning are more susceptible to the effects of sampling

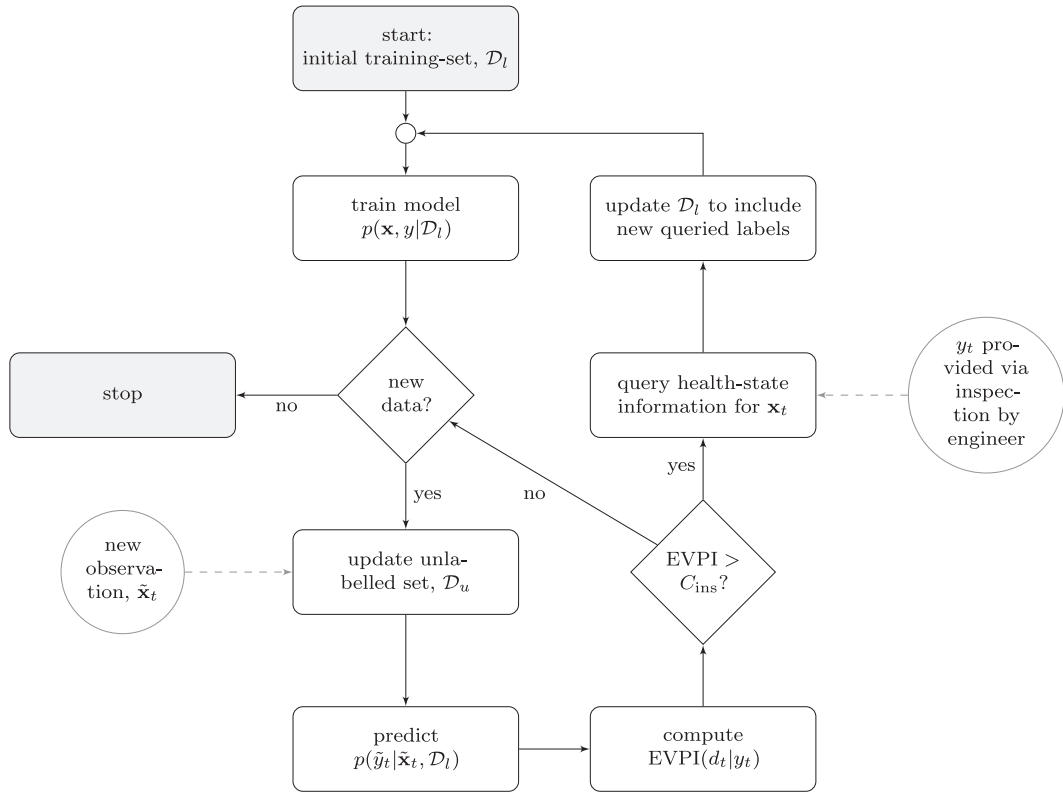


Fig. 3. Flow chart to illustrate the risk-based active learning process for classifier development and inspection scheduling.

bias than traditional information-based approaches because data with high-value of information are often a subset of data with high-information content [7,10]. This characteristic can be understood if one realises that not all data are equally informative from a classification perspective, and further, that not all information is equally valuable from decision-making perspective.

Thus far, active learning algorithms for SHM have centred around generative classifiers [7,10]; learning joint probability distributions across the input and label space. Specifically, mixtures of Gaussian distributions, or Gaussian mixture models (GMMs), were utilised in [7,10]. To highlight the effects of sampling bias, a case study on a representative synthetic dataset is presented. In particular, the case study focusses on the performance of a decision-making agent utilising a risk-based active learning algorithm for the development of a GMM.

3.1. Case study: Visual example

To draw attention to the effects of sampling bias in risk-based active learning algorithms, a modified version of the synthetic dataset used in [10] is adopted. The dataset consists of a two-dimensional input space $\mathbf{x}_t = \{x_t^1, x_t^2\}$ and a four-class label space $y_t \in \{1, 2, 3, 4\}$. Framed as an SHM dataset, one can consider the inputs as features used to discriminate between classes corresponding to four health states of interest for a structure S where:

- Class 1 corresponds to the structure being undamaged and fully functional.
- Class 2 corresponds to the structure possessing minor damage whilst remaining fully functional.
- Class 3 corresponds to the structure possessing significant damage, resulting in a reduced operational capacity.
- Class 4 corresponds to the structure possessing critical damage, resulting in operational incapacity, i.e. total structural failure.

The original dataset comprised of 1997 data points ordered according to health state — from Class 1 through to Class 4. For the current case study, the dataset was extended by drawing additional independent samples from a generative distribution learned from the original dataset. This extension procedure was conducted a total of five times resulting in 11 997 data points — the original dataset contributing 1997 points, and each of the five extensions contributing an additional 2000 points. The data generated progresses repeatedly from Class 1 to Class 4 a total six times, thereby emulating the process of structural degradation and subsequent repair — a pattern that could conceivably be experienced by the fictitious structure of interest S . A visualisation of the extended dataset is presented in Fig. 4.

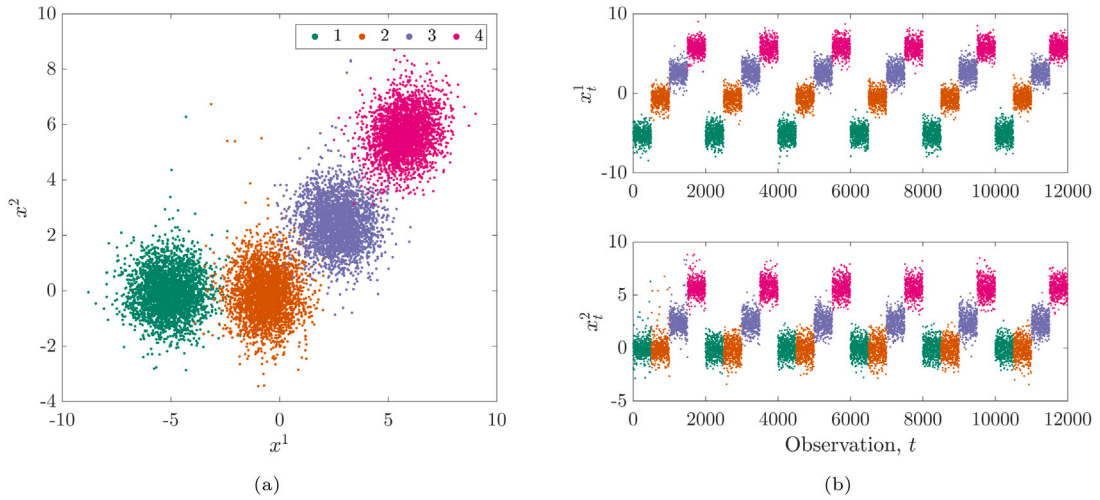


Fig. 4. Visualisation of the extended synthetic dataset in (a) the feature space and (b) discrete time t .

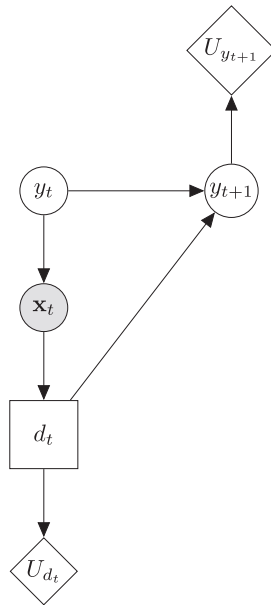


Fig. 5. An influence diagram representation of the decision process associated with structure S .

3.1.1. Decision process

In order to employ risk-based active learning for the development of a statistical classifier, a decision process for the structure S must first be specified. For consistency with [10], an identical binary maintenance decision process is selected for the current study.

Consider an agent that, at discrete-time instances $t \in \mathbb{N}$, is tasked with making a binary decision d_t . The agent must select an action from $\text{dom}(d_t) = \{0 \text{ (do nothing), } 1 \text{ (repair)}\}$, such that some degree of operational capacity is maintained for S at instance $t + 1$. It is assumed that the agent has access to the observed discriminative features \mathbf{x}_t and must infer the current and future latent health states y_t and y_{t+1} via a statistical classifier and a transition model, respectively. An influence diagram for such a decision process is shown in Fig. 5.

Fig. 5 indicates that the actions in the domain of d_t have costs associated, specified by the utility function $U(d_t)$, and shown in Table 1. It is assumed that $d_t = 0$ has no utility associated with it. On the other hand, $d_t = 1$ has negative utility because of the expenditure necessary to cover the material and labour costs associated with structural maintenance. It is worth noting that, in many practical applications, the specification of utility function is non-trivial and is an active topic of research outside the scope of the current paper. For further reading related to the specification of utility functions, the reader is directed to [21]. Hence, for this case study, relative utility values are selected to be only somewhat representative of the SHM context.

Table 1
The utility function $U(d_t)$ where $d_t = 0$ and $d_t = 1$ denote the 'do nothing' and 'repair' actions, respectively.

d_t	$U(d_t)$
0	0
1	-30

Table 2
The utility function $U(y_{t+1})$.

y_{t+1}	$U(y_{t+1})$
1	10
2	10
3	5
4	-75

Table 3
The conditional probability table $P(y_{t+1}|y_t, d_t)$ for $d_t = 0$.

		y_{t+1}			
		1	2	3	4
y_t	1	0.8	0.18	0.015	0.005
	2	0	0.8	0.15	0.05
	3	0	0	0.8	0.2
	4	0	0	0	1

Table 4
The conditional probability table $P(y_{t+1}|y_t, d_t)$ for $d_t = 1$.

		y_{t+1}			
		1	2	3	4
y_t	1	1	0	0	0
	2	0.99	0.01	0	0
	3	0.99	0	0.01	0
	4	0.99	0	0	0.01

For simplicity, and for more compact influence diagrams, within the current case study it is assumed that health states may be mapped directly to utilities. For information regarding how this may be achieved in a principled manner, via the specification of failure events as Bayesian network representations of fault trees, the reader is directed to [6]. Once again, the utility function used here reflects the relative utility values that may be expected in a typical SHM application. The utility function $U(y_{t+1})$ is provided in Table 2. It can be seen from Table 2 that for health-states 1 and 2, in which the structure is at full operational capacity, positive utility has been assigned. For health-state 3, which corresponds to a reduced operational capacity, a lesser positive utility has been assigned. For health-state 4, which corresponds to critical damage, a relatively-large negative utility has been assigned, to reflect a complete loss of operational capacity and an additional severe consequence associated with structural failure, e.g. environmental damage.

As aforementioned, the agent requires a transition model in order to obtain a forecast for the future health state y_{t+1} . For the current case study, it is assumed that this model is known *a priori* so that focus can be given to the development of the statistical classifier. Examples of this transition model being developed from data and prior knowledge of physics are presented in [22,23], respectively. As shown in Fig. 5, the future health state y_{t+1} is conditionally dependent on the current health state y_t and the decision d_t . Given $d_t = 0$, it is assumed that the structure will monotonically degrade with a propensity to remain in its current health state. This assumption is reflected in the conditional probability distribution $P(y_{t+1}|y_t, d_t = 0)$ presented in Table 3. Given $d_t = 1$, it is assumed that the structure is returned to its undamaged state with probability 0.99 and remains in its current state with probability 0.01. This assumption is reflected in the conditional probability distribution $P(y_{t+1}|y_t, d_t = 1)$ presented in Table 4.

As alluded to previously, the current health state y_t is inferred from the observed features x_t via a statistical classifier subject to risk-based active learning. To fully specify the contextual parameters for risk-based active learning, it is assumed that the ground-truth health state at discrete-time instance t can be obtained via inspection at the cost of $C_{\text{ins}} = 7$. Here, cost can be interpreted as the magnitude of a strictly non-positive utility.

3.1.2. Statistical classifier

As previously discussed, generative classifiers, specifically GMMs, have garnered the vast proportion of attention with regard to active learning for SHM [7,10]. As such, the current case study adopts a classifier specified by a mixture of four multivariate

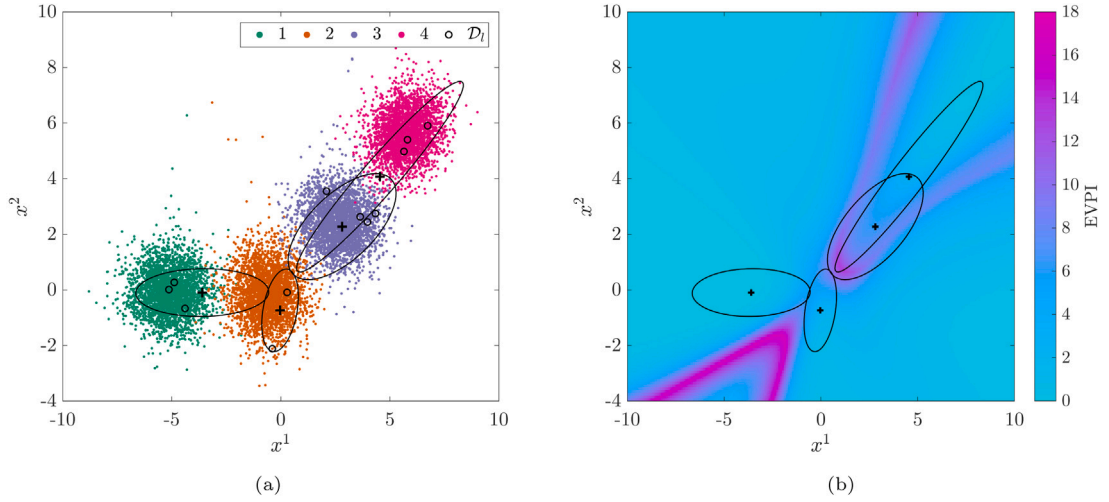


Fig. 6. A statistical classifier $p(y_i, \mathbf{x}_i, \Theta)$ prior to risk-based active learning; *maximum a posteriori* (MAP) estimates of the mean (+) and covariance (ellipses represent 2σ) are shown. (a) shows the initial model overlaid onto the data with labelled data D_l encircled and (b) shows the resulting EVPI over the feature space.

Gaussian distributions learned in a supervised manner from a labelled dataset D_l . Each Gaussian component, specifies a generative model for the observable features \mathbf{x}_i and is conditionally dependent on one of the four possible health states in $\text{dom}(y_i)$,

$$p(\mathbf{x}_i | y_i = k) = \mathcal{N}(\boldsymbol{\mu}_k, \boldsymbol{\Sigma}_k) \quad (5)$$

for $k = 1, \dots, 4$ and where $\boldsymbol{\mu}_k$ and $\boldsymbol{\Sigma}_k$ are the parameters of the multivariate Gaussian distribution corresponding to the mean and covariance, respectively. Further details of the GMM, including specification of the *mixing proportions* λ and steps required for Bayesian inference of the distribution parameters, are provided in [Appendix A](#).

Concisely, a Gaussian mixture model was trained in a supervised Bayesian manner on D_l . Within the risk-based active learning algorithm, the learning procedure presented in [Appendix A](#) is reapplied each time the labelled dataset D_l is extended following the inspection of structure S that is mandated when $\text{EVPI}(d_i | y_i) > C_{ins}$.

3.1.3. Results

In order to assess the effects of sampling bias, the risk-based active learning approach was used to learn a GMM within the decision process outlined in [Section 3.1.1](#). This process was repeated 1000 times. For each repetition, the dataset was randomly halved into a test set and a training set D . From the training set, a small ($\sim 0.2\%$) random subset retain their corresponding ground-truth labels. These data form the initialised labelled dataset D_l . The remaining majority of data from D have their ground-truth labels hidden, forming the unlabelled dataset D_u .

[Figs. 6 and 7](#) show a GMM from one of the 1000 repetitions, before and after the risk-based active learning process, respectively.

It can be seen from [Fig. 6\(a\)](#) that, initially, the model fits poorly; the means and covariances for each class being heavily influenced by the zero-mean and unit-variance priors because of the lack of data. [Fig. 6\(b\)](#) shows the EVPI over the feature space induced by considering the initial model within the context of the decision process. The near-symmetric ‘sharp’ regions of high EVPI (pink) can be attributed to the cluster for Class 4; in particular, the major axis of the covariance ellipse (i.e. the dominant eigenpair of the covariance matrix). Intuitively, the regions of high value of information occur between the clusters for classes with severe and milder consequences.

From [Fig. 7\(a\)](#), one can see that during the active learning process, querying is concentrated in highly localised regions of the feature space. Specifically, regions between the clusters for Class 3 (moderate damage) and Class 4 (severe damage), have been queried preferentially. It is clear from [Fig. 7\(a\)](#) that the subset of data D_l is not representative of the underlying distribution, indicating that sampling bias is present. Nonetheless, the queried data have been somewhat successful in learning a decision boundary — as can be deduced by observing the region of high EVPI between the means of clusters for Class 3 and Class 4 in [Fig. 7\(b\)](#).

[Figs. 8 and 9](#) provide further evidence of sampling bias in the risk-based active learning approach.

[Fig. 8](#) shows the means and standard deviations, calculated from the 1000 repetitions, of the relative representation of each class within D_l . [Fig. 8\(a\)](#) shows the class proportions for D_l subject to risk-based active learning whereas [Fig. 8\(b\)](#) shows the class proportions for D_l subject to an equivalent number of random queries. As one would expect, the random querying is initially biased, as the learning algorithm is presented with ordered data. However, as more random queries are made, the proportion for each class converges to approximately 25%. In stark contrast, under querying guided according to EVPI, the class proportions diverge early in the querying process. [Fig. 8\(a\)](#) shows that, on average, Class 3 garners a majority representation after fewer than 50 queries.

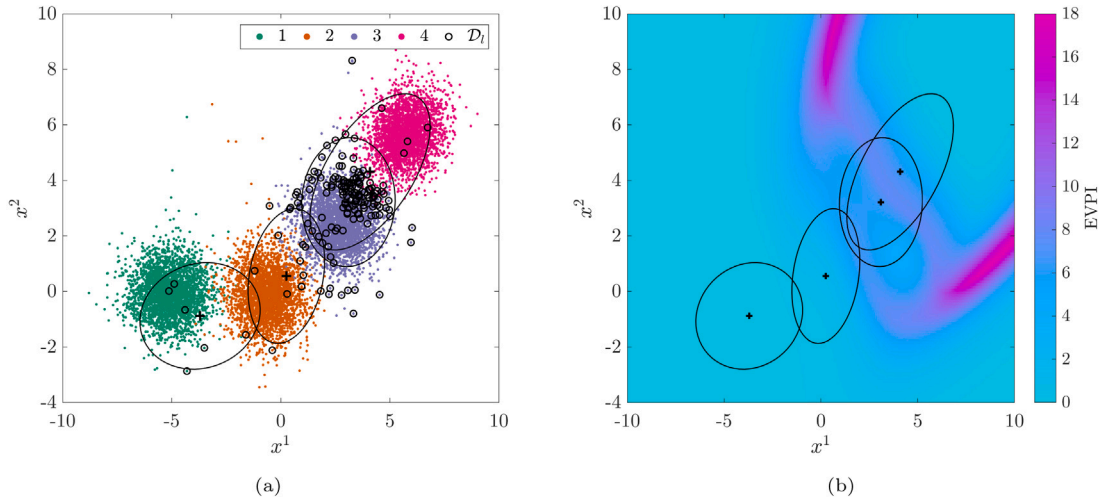


Fig. 7. A statistical classifier $p(y_i, \mathbf{x}_i, \Theta)$ following risk-based active learning; *maximum a posteriori* (MAP) estimates of the mean (+) and covariance (ellipses represent 2σ) are shown. (a) shows the final model overlaid onto the data with labelled data D_l encircled and (b) shows the resulting EVPI over the feature space.

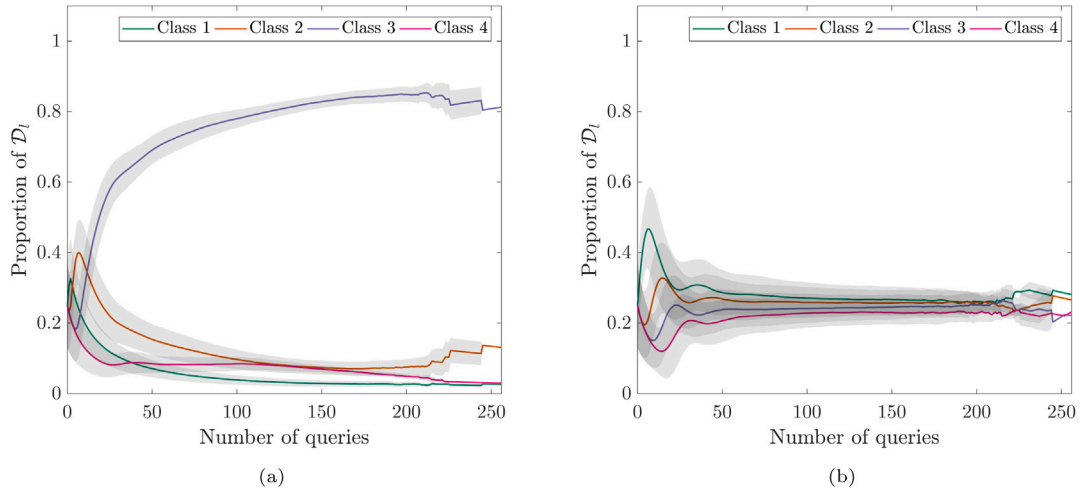


Fig. 8. Variation in class proportions within D_l with number of label queries for an agent utilising a GMM learned from D_l extended via (a) risk-based active querying and (b) random sampling. Shaded area shows $\pm 1\sigma$.

This disparity in class representation is maintained throughout the risk-based active learning process with class 3 reaching a peak representation of approximately 80%.

Fig. 9 compares the total number of queries for data point indices in D_u over the 1000 repetitions for EVPI-based and random querying. Although individual data points within the training data D are not fixed within D_u because of the random selection of D_l , only a small proportion of data are in D_l and therefore the index of a datapoint will differ by no more than 12 between D and D_u . Furthermore, the histogram ‘bins’ represent groups containing 25 indices each, thereby minimising the amount of leakage from differing indices. As one would expect, random sampling results in each data point being queried approximately by an equal amount. As is indicated by the class proportions shown in Fig. 8, Fig. 9 shows risk-based active learning results in data corresponding to Class 3 being queried preferentially which, of course, results in a biased labelled dataset on which the classifier is trained.

Both the positive and negative consequences of sampling bias can be realised by considering Fig. 10. Fig. 10(a) shows the median and interquartile range (calculated from 1000 repetitions) of the decision accuracy for an agent utilising the learned GMMs, evaluated throughout the risk-based active-learning process. For comparison, also shown in Fig. 10(a), is the same performance measure for an agent utilising GMMs learned from a labelled dataset comprised of an equal number of randomly-queried data points. Here, ‘decision accuracy’ is a measure of decision-making performance [6]. The decision accuracy is a comparison between the actions selected by an agent using the classifier being evaluated, and the optimal (correct) actions selected by an agent in

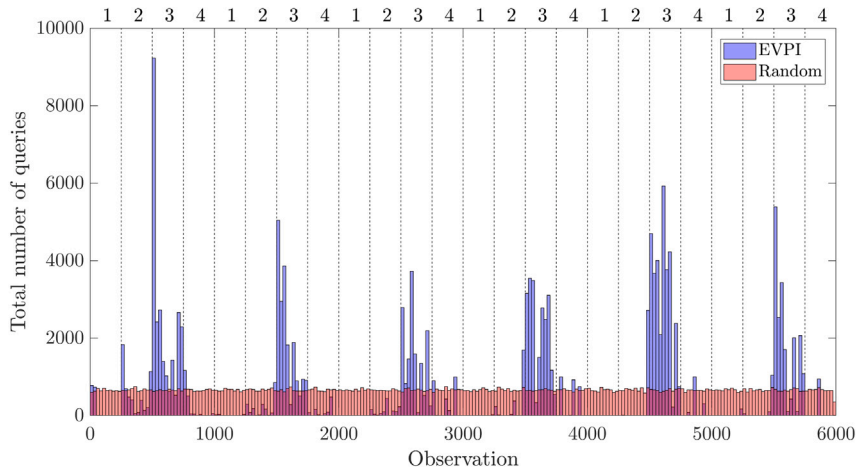


Fig. 9. Histograms showing the distribution of the number of queries for each observation in D_u over 1000 runs when adopting (a) risk-based active learning (EVPI) and (b) random sampling (Random) in order to learn a GMM. The average location of classes within D_u are numbered on the upper horizontal axis and transitions between classes are denoted as a dashed line.

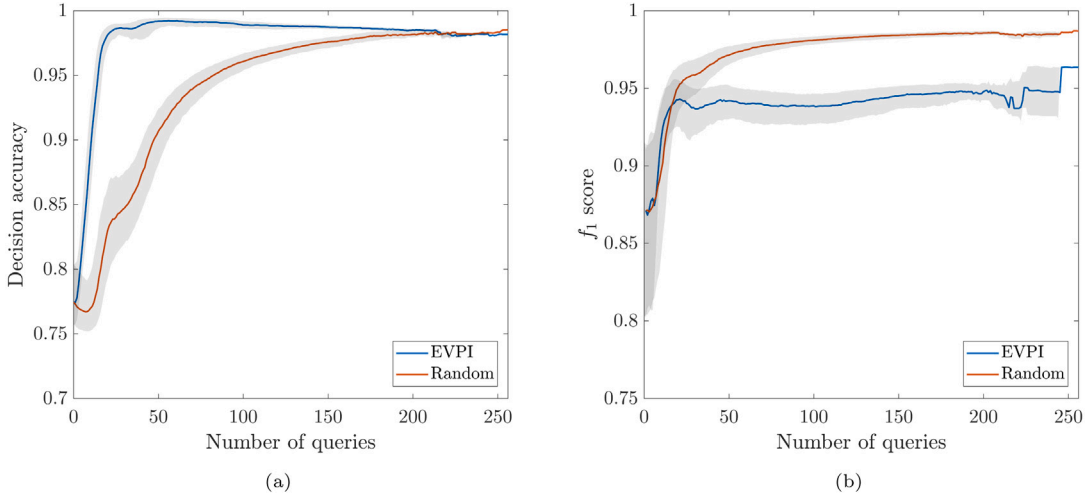


Fig. 10. Variation in median (a) decision accuracy and (b) f_1 score with number of label queries for an agent utilising a GMM learned from D_l extended via (i) risk-based active querying (EVPI) and (ii) random sampling (Random). Shaded area shows the interquartile range.

possession of perfect information. Quantitatively, decision accuracy is defined as,

$$\text{decision accuracy} = \frac{\text{number of correct decisions}}{\text{total number of decisions}} \tag{6}$$

It can be seen from Fig. 10(a), that a high level of decision-making performance can be achieved with fewer queries by adopting a risk-based approach to active learning, when compared to random sampling. This result is achieved because of the preferential querying process that induces sampling bias in the labelled dataset. That being said, the performance of the agent utilising risk-based active learning gradually degrades as more queries are made. While randomly obtaining queries improves decision accuracy at a lesser rate, a decline in performance is not observed and, in fact, random sampling eventually surpasses guided querying in terms of decision-making performance. These results indicate that the decline in decision accuracy is a result of the sampling bias that is exacerbated by the latter queries in the active learning process. This proposition is further supported by Fig. 10(b).

Fig. 10(b) shows the average classification performances (f_1 -score [24]) of agents utilising EVPI-guided and random approaches to querying. It can be seen from Fig. 10(b), that active querying and random querying increase classification performance at similar rates initially. However, the classification performance for risk-based active learning plateaus at a lower value than that of random sampling. This observation provides supplementary evidence that classifiers developed via risk-based active

learning represent the underlying distribution poorly¹. Once again, this observation is to be expected when considering the disparity in class representation within \mathcal{D}_l for risk-based active learning. The drastic difference between the decision accuracy and classification accuracy demonstrates that risk-based active learning algorithms prioritise decision-making performance over classification performance.

3.1.4. Further comments

As an archetypal example of a probabilistic generative model, one can rationalise the effects of sampling bias on decision-making agents utilising such models by examining the posterior parameter estimates for the GMM, given in Eqs. (A.14) and (A.16). Here, a reminder is provided that, as a result of the Bayesian inference on distribution parameters, components of the posterior GMM are Student- t distributed, rather than Gaussian as the name would imply.

One way in which bias is introduced to posterior model is via the estimation of the posterior means and covariances (Eqs. (A.8) and (A.11), respectively). These updates depend on weighted averages of the prior mean and sample mean. The sample mean \bar{x}_k becomes biased because, for a given label, regions of the feature space that are shared with or close to another label are sampled preferentially. Whilst these parameters do introduce bias, this bias facilitates the rapid improvement in decision-making performance achieved via risk-based active learning. These biased estimates cause the distributions corresponding to classes of differing optimal strategies to drift closer together, thereby narrowing the decision boundary region inferred via the model.

The bias introduced via the posterior mixing proportions (Eq. (A.16)) can likely be ascribed to the deterioration in decision performance. This posterior update is simply a summation of the prior weight for a given class and the number of samples corresponding to that class in \mathcal{D}_l . As is demonstrated in Fig. 8, the risk-based active learning process causes the class proportions in \mathcal{D}_l to greatly deviate from those in the underlying distribution. This effect undoubtedly results in misclassifications, and therefore erroneous decisions, particularly for data points close to decision boundaries.

Finally, an additional effect of sampling bias, not immediately obvious from the case study presented above, arises via the posterior estimates for the Student- t distribution's degrees of freedom parameter. As previously mentioned, this parameter governs the weightedness of the distribution tails; distributions with fewer degrees of freedom possess tails that are weighted more heavily and thus hold a greater probability mass away from the mean. In contrast, distributions with a greater number of degrees of freedom have more probability mass concentrated around the mean. From Eqs. (A.10) and (A.14), it can be seen that the degrees of freedom are a monotonically-increasing function of the number of samples for a given class. This characteristic has implications for how an agent utilising an actively-learned model responds when presented with outlying observations. As some classes are seldom queried during risk-based active learning, a classifier trained accordingly will make overconfident predictions on outlying data in favour of classes that are under-represented in the training data. This result has particularly concerning consequences for structural maintenance decision processes if benign classes are under-represented as extreme structural damage states may go ignored. Further discussion around the treatment of outlying data for classifiers used in an SHM decision-support context is provided in Section 7.

In essence, risk-based active learning provides a useful methodology for developing statistical classifiers for decision-support applications because of its ability to consider the value of information with respect to the cost of obtaining said information and thereby improve decision-making performance in a cost-effective manner. Nevertheless, in some scenarios, because of inherent issues with sampling bias, the use of generative models alone may not serve as the most appropriate foundation for risk-based active learning algorithms. Although the decline in decision performance observed in the previous subsection is small, ultimately, it corresponds to a loss in resource/utility and therefore it is desirable to rectify this issue. The following sections outline and demonstrate approaches to curtail the detrimental effects of sampling bias in such algorithms.

4. Approaches to address sampling bias

As discussed previously, sampling bias can occur in generative models learned by risk-based active learning. The problem is from posterior estimates of distribution parameters and a result of imbalanced class representation and non-uniform coverage of the feature space within \mathcal{D}_l .

The current section aims to address these issues by considering two main approaches; semi-supervised learning, and discriminative classifiers. Two methods for semi-supervised learning are considered; expectation-maximisation, and latent-state smoothing. The multiclass relevance vector machine (mRVM) is considered as the discriminative classifier. Two formulations of the mRVM are considered; mRVM₁ and mRVM₂ [12,25].

4.1. Semi-supervised learning

Alongside active learning, semi-supervised learning is a form of partially-supervised learning — utilising both \mathcal{D}_l and \mathcal{D}_u to inform the classification mapping. The fundamental principle of semi-supervised learning that distinguishes it from active learning is as follows; data in the unlabelled dataset \mathcal{D}_u can be given *pseudo-labels* that are informed by the ground-truth labels available in \mathcal{D}_l . By incorporating pseudo-labels for unqueried data into the risk-based active learning algorithm, class imbalance and inadequate coverage of the feature space can be rectified.

¹ In the limit of infinite queries, random sampling will achieve classification performance equivalent to the 'gold standard' of fully-supervised learning.

There are several approaches to semi-supervised learning. The simplest approach, *self-labelling*, involves training a classifier using D_l in a supervised manner [26]. Pseudo-labels can then be assigned to the unlabelled data according to the predictions of this classifier. The model can subsequently be retrained incorporating both ground-truth labels and pseudo-labels. The effectiveness of self-labelling is strongly conditioned on the implementation and the underlying supervised-learning algorithm. More advanced approaches that utilise *low-density-separation* [26] and *graph-based learners* [27] are available.

Semi-supervised learning has been applied to pattern recognition problems for SHM [28]. This method of learning brings several benefits, such as an increased utilisation of information obtained via costly structural inspections.

4.1.1. Expectation-maximisation

The first of the approaches to semi-supervised learning considered here, aims to exploit the generative mixture model form of the statistical classifier presented in Section 3.1.2. Generative models can conveniently account for labelled and unlabelled data; this is achieved by modifying the *expectation-maximisation* (EM) algorithm [29], typically used for unsupervised density estimation, such that the log-likelihood of the model is maximised over both unlabelled and labelled data. Details of this EM algorithm are provided in Appendix B.

The EM algorithm iterates between E-steps and M-steps, resulting in a hill-climbing search that terminates when the log-likelihood (Eq. (B.2)) converges to a local maximum in the parameter space. The EM algorithm is sensitive to initial conditions and in many applications requires multiple random initialisations. For the current application, however, the model is initialised using the labelled dataset; this additional information mitigates the need to re-initialise. Examination of the parameter updates provided in Eqs. (B.7) to (B.15) reveals that the information introduced by the incorporation of unlabelled data via EM learning has the ability to reduce the bias in parameter estimates by considering a broader span of the feature space.

Within the risk-based active learning algorithm, it is possible to apply EM every time a new unlabelled observation is acquired; however, this would be computationally expensive. To limit the computational cost of the modified active-learning algorithm, the EM update was only applied following the retraining of the model subsequent to the acquisition of a new ground-truth label obtained via inspection. A flow chart detailing the risk-based active-learning algorithm modified to incorporate EM is shown in Fig. 11.

4.1.2. Latent health-state smoothing

The second approach to semi-supervised learning aims to exploit the Markovian model underpinning the decision process outlined in Section 3.1.1. The Markov property asserts that future states of a stochastic process are conditionally independent of past states, given the present states, i.e. $p(y_{T+1}|y_{1:T}) = p(y_{T+1}|y_T)$. Here, the notation $1:T$ is employed to refer to all instances from 1 to T , inclusive.

Hidden Markov models (HMMs) are a statistical state-space representation of stochastic processes for which the Markov property holds. Within HMMs, it is typically assumed that latent states are partially-observable and must be inferred via indirect observations. For the current application, one can form a HMM for latent states between inspections at times $t = a$ and $t = b$. As they have occurred in the past, modifications can be made to the HMM such that decisions between a and b are treated as observed exogenous inputs that influence the subsequent latent state. A Bayesian network of this process can be seen in Fig. 12.

Given that a modified HMM can be formed for states between two inspections, posterior marginal distributions conditioned on both inspections and intermediate observations can be obtained for the latent states via a smoothing algorithm. For this application, the *forward-backward* algorithm was employed to infer the smoothed distributions [30]. The forward-backward algorithm is a message-passing algorithm and involves three key steps: (1) computing forward messages, (2) computing backward messages, and (3) computing smoothed distributions.

The forward messages ϕ_t relate to the joint probability distribution $p(\tilde{\mathbf{x}}_{a+1:t}, \tilde{y}_t | y_a) \forall t \in (a, b)$, and can be computed recursively by invoking the Markov property,

$$\phi_t = p(\tilde{\mathbf{x}}_t | y_t) \sum_{y_{t-1}} \phi_{t-1} \cdot p(y_t | y_{t-1}, d_{t-1}) \quad (7)$$

where the message ϕ_a is initialised as δ_{k, y_a} . Here, $p(y_t | y_{t-1}, d_{t-1})$ is equivalent to the transition matrix $p(y_{t+1} | y_t, d_t)$ and $p(\tilde{\mathbf{x}}_t | y_t)$ is the posterior predictive distribution of the statistical classifier.

The backward messages ψ_t relate to the conditional distribution $p(\tilde{\mathbf{x}}_{t:b-1} | \tilde{y}_{t:b-1}, y_b) \forall t \in (a, b)$, and can again be computed recursively as follows,

$$\psi_t = \sum_{y_{t+1}} \psi_{t+1} \cdot p(\tilde{\mathbf{x}}_{t+1} | y_{t+1}) \cdot p(y_t | y_{t+1}, d_{t+1})^T \quad (8)$$

where the message ψ_b is initialised as δ_{k, y_b} . Here, it is worth recalling that $p(y_{t+1} | y_t, d_t)$ can be considered to be a square $K \times K$ matrix for a given d_t .

To obtain the posterior smoothed distributions $p(\tilde{y}_t | y_a, y_b, \tilde{\mathbf{x}}_{a+1:b-1}, d_{a:b-1})$, one can simply multiply together the forward and backward messages and normalise to unity [31],

$$p(\tilde{y}_t | y_a, y_b, \tilde{\mathbf{x}}_{a+1:b-1}, d_{a:b-1}) \propto \phi_t \psi_t \quad (9)$$

By taking the MAP of the smoothed distribution, pseudo-labels \hat{y}_t may be assigned to $\tilde{\mathbf{x}}$ such that,

$$\mathcal{D}_u = \{(\tilde{\mathbf{x}}_t, \hat{y}_t) | \tilde{\mathbf{x}}_t \in X, \hat{y}_t \in Y\}_{t=1}^m \quad (10)$$

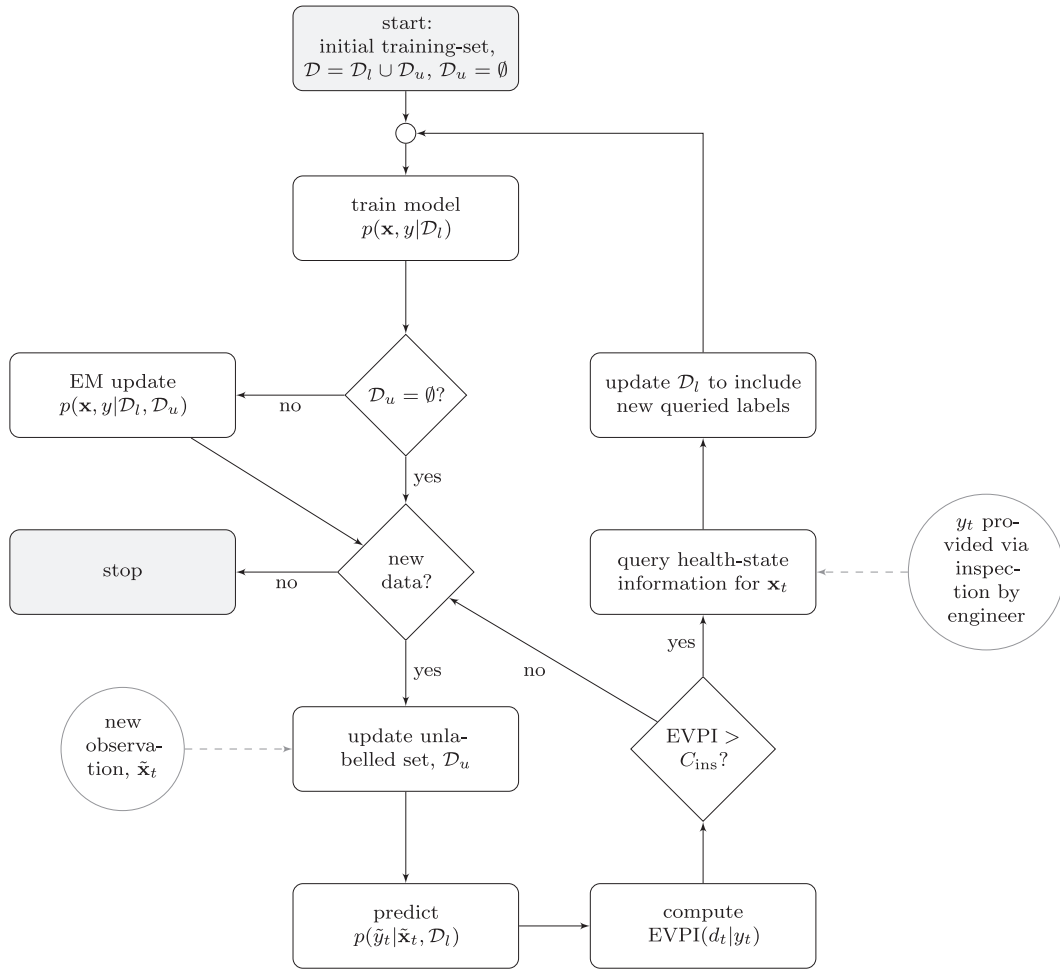


Fig. 11. Flow chart to illustrate the risk-based active learning process incorporating expectation-maximisation.

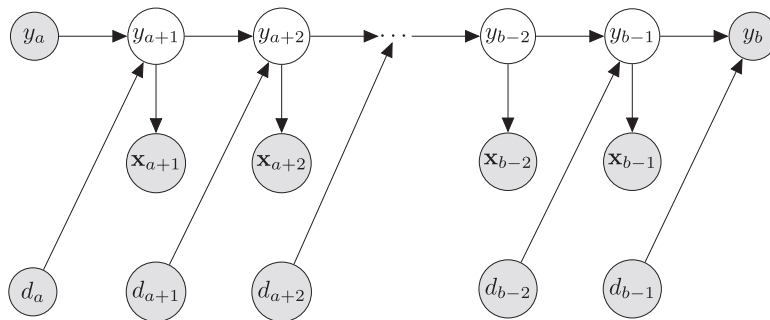


Fig. 12. A Bayesian network representation of a modified HMM with latent states conditionally dependent on known historical actions.

and where,

$$\hat{y}_t = \operatorname{argmax}_{\tilde{y}_t} p(\tilde{y}_t | y_a, y_b, \tilde{x}_{a+1:b-1}, d_{a:b-1}) \tag{11}$$

Using the pseudo-labels provided for D_u , in addition to D_l , updated estimates for θ can be computed in a supervised manner via Eqs. (A.8) to (A.11) and (A.16).

As with the decision process underpinning risk-based active learning, latent-state smoothing relies on the specified observation and transition models. If poor models are chosen, erroneous pseudo-labels may be provided for unlabelled data.

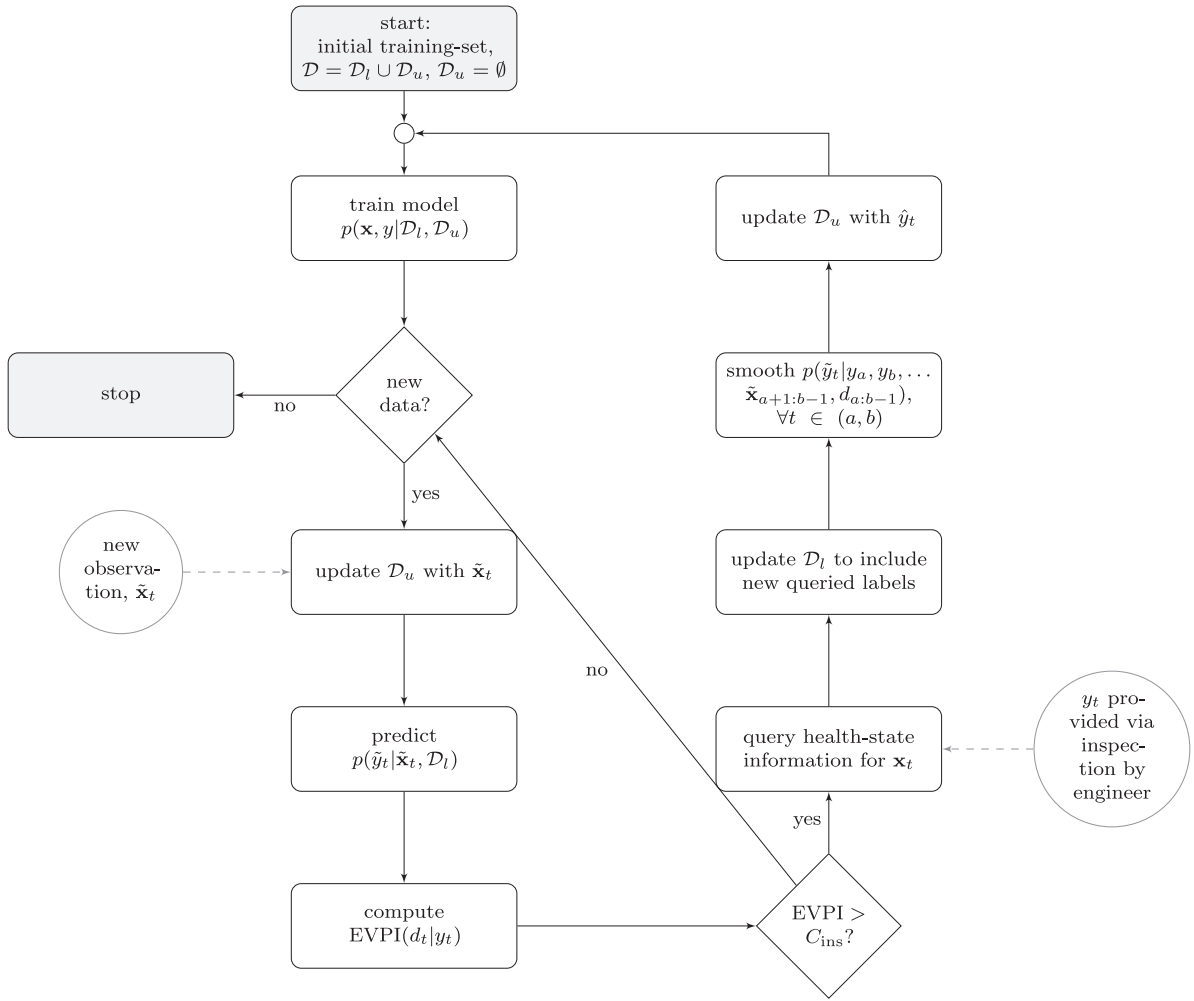


Fig. 13. Flow chart to illustrate the risk-based active learning process incorporating latent-state smoothing.

Similar to the EM approach, the smoothing approach to semi-supervised learning addresses sampling bias by reducing the class imbalance and generating a training dataset that is more representative of the underlying distribution. Unlike the EM approach, latent-state smoothing utilises information encoded within the decision process transition model which can yield some powerful inferences. One can imagine a scenario where it is determined via inspection that the structure is undamaged at time a , and time b , and furthermore, it is known that no interventions were performed on the structure inside the interval (a, b) . Under these conditions, and given that the relevant transition model allows only monotonic degradation, it can be inferred that the structure is undamaged with unit probability for all instances in (a, b) .

Latent-state smoothing fits naturally within the risk-based active learning framework and can be applied after each inspection. When applied immediately following the first inspection, it is assumed that at the onset of the active learning algorithm, the structure was in its undamaged state. For the current paper, latent-states are smoothed only once, using the version of the classifier available up to the most recent inspection. An alternative approach in which all historical latent-states are smoothed after every inspection using the most up-to-date classifier available may yield better performance, however, would be more computationally expensive. A flow chart detailing the risk-based active learning algorithm modified to incorporate smoothing is shown in Fig. 13.

4.1.3. Results

The EM and smoothing approach to semi-supervised learning were each incorporated into the risk-based active learning process and applied to the case study presented in Section 3.1.3. Once again, 1000 repetitions were conducted, each with randomly-selected training and test datasets and with D_l randomly initialised as a small subset of the training data. For the smoothing approach, decisions were specified according to the hidden labels associated with D_u , such that the state transitions present in the dataset were consistent with the transition models specified in Tables 3 and 4.

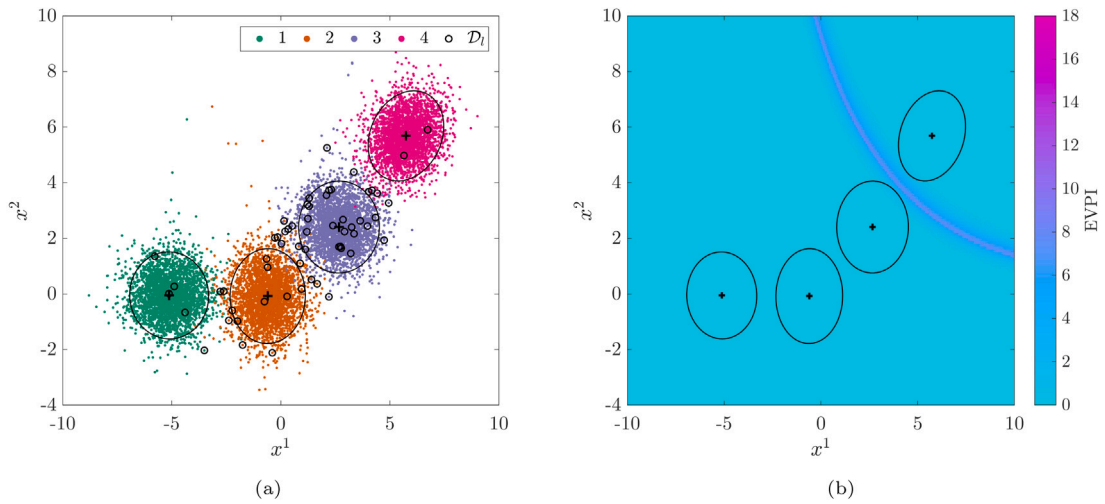


Fig. 14. A statistical classifier $p(y_i, \mathbf{x}_i, \Theta)$ following risk-based active learning with semi-supervised learning via EM; *maximum a posteriori* (MAP) estimates of the mean (+) and covariance (ellipses represent 2σ) are shown. (a) shows the final model overlaid onto the data with labelled data D_l encircled and (b) shows the resulting EVPI over the feature space.

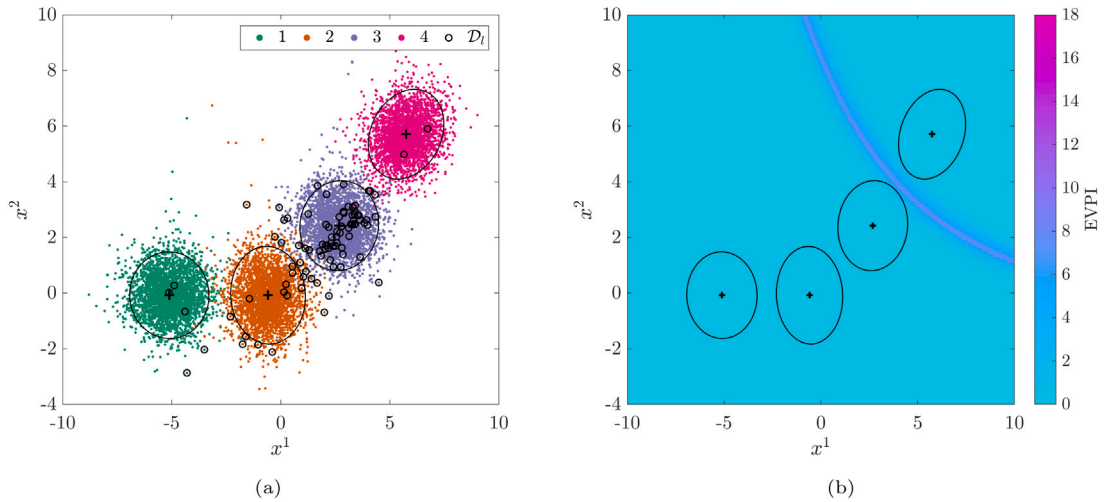


Fig. 15. A statistical classifier $p(y_i, \mathbf{x}_i, \Theta)$ following risk-based active learning with semi-supervised learning via smoothing; *maximum a posteriori* (MAP) estimates of the mean (+) and covariance (ellipses represent 2σ) are shown. (a) shows the final model overlaid onto the data with labelled data D_l encircled and (b) shows the resulting EVPI over the feature space.

Figs. 14 and 15 show a GMM for one of the 1000 runs after the risk-based active-learning process incorporating EM and smoothing, respectively. The initial model prior to risk-based active learning is unchanged from that shown in Fig. 6.

It can be seen from Figs. 14(a) and 15(a) that, similar to the GMM without semi-supervised learning, risk-based active learning with semi-supervised learning results in labels being obtained for localised regions of the feature space, with Class 3 (moderate damage) being preferentially queried. Nonetheless, these figures show that the clusters learned in a semi-supervised manner fit the data very well. Furthermore, examination of Figs. 14(b) and 15(b), reveals that the resulting EVPI distributions over the feature spaces distinctly differ from that in Fig. 7(b). For both the EM and smoothing approaches, the introduction of semi-supervised learning into the risk-based active learning process has enabled the inference of a well-defined decision-boundary indicated by the band of high EVPI separating the 2σ clusters for Class 3 and Class 4.

Fig. 16 shows the effective class proportions in the training data D averaged over the 1000 runs for both the EM and smoothing approaches to active learning. These figures, when considered in the context of the equations specifying the relevant model parameter updates, provide some explanation as to why incorporating semi-supervised learning yields improved model fits over standard risk-based active learning. It can be seen from Figs. 16(a) and 16(b) that the effective class proportions in the latter stages of the querying process are much more representative of the underlying data distribution when semi-supervised learning is

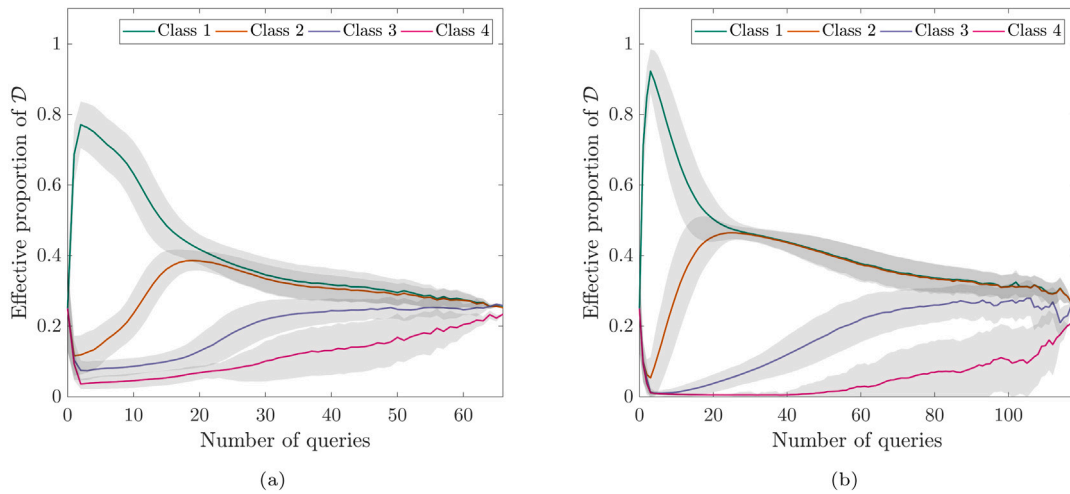


Fig. 16. Variation in effective class proportions within \mathcal{D}_l with number of label queries for an agent utilising a GMM learned from \mathcal{D}_l extended risk-based active learning with semi-supervised updating via (a) expectation-maximisation and (b) latent-state smoothing. Shaded area shows $\pm 1\sigma$.

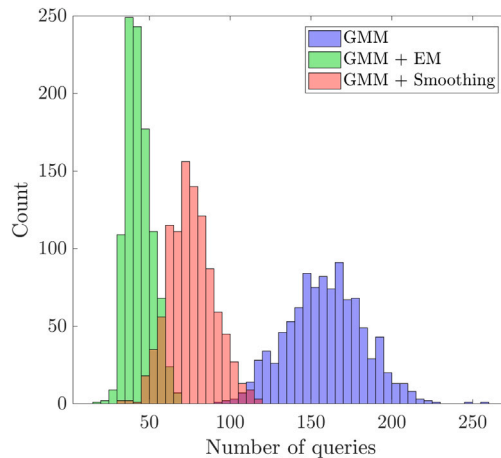


Fig. 17. Histograms showing the distribution of the number of queries from 1000 runs of the risk-based active learning of (i) a GMM (blue) (ii) a GMM semi-supervised via expectation-maximisation (green) and (iii) a GMM semi-supervised via latent-state smoothing (red).

employed — approximately 25% of the dataset represented by each of the four classes. As postulated in Section 4.1, having a more representative training dataset results in better-fitting generative distribution, and consequently, a better-defined decision boundary.

Fig. 17 shows how the number of queries varies between each approach to risk-based active learning. It is immediately obvious from Fig. 17, that incorporating semi-supervised learning, via either EM or smoothing, substantially reduces the number of queries made. The significance of this result becomes most apparent if one recalls that, in the proposed SHM decision context, the number of queries can be mapped directly onto inspection expenditure. This result is to be expected as, when employing semi-supervised learning, supplementary information from the unlabelled dataset is utilised to specify the model each time a query is made. This characteristic allows clusters to become well-defined more quickly, reducing the area of high-EVPI regions (as is visible in Figs. 14 and 15) meaning fewer queries are made later in the dataset. This result is evident from Fig. 18.

Fig. 18 compares the total number of queries for each index in \mathcal{D}_u over the 1000 repetitions of risk-based active learning conducted with a GMM, a GMM with EM and a GMM with smoothing. It can be seen from Fig. 18, that the incorporation of semi-supervised learning into the risk-based active approach results in relatively more queries being obtained during the first occurrence of each class, with relatively fewer queries being made at later occurrences. It can be seen that Class 3 is heavily investigated at each occurrence when semi-supervised methods are not employed. This phenomenon is to be expected when one considers the differences between the high-EVPI regions shown in Fig. 7(b) and Figs. 14(b) and 15(b); as previously discussed semi-supervised learning results in a well-defined decision boundary thereby reducing the likelihood that data will have high value of information.

Fig. 19 shows median decision accuracies and f_1 -scores throughout the query process, and compares those measures for risk-based active learning with, and without, semi-supervised learning. From Fig. 19(a), one may be inclined to deduce that the

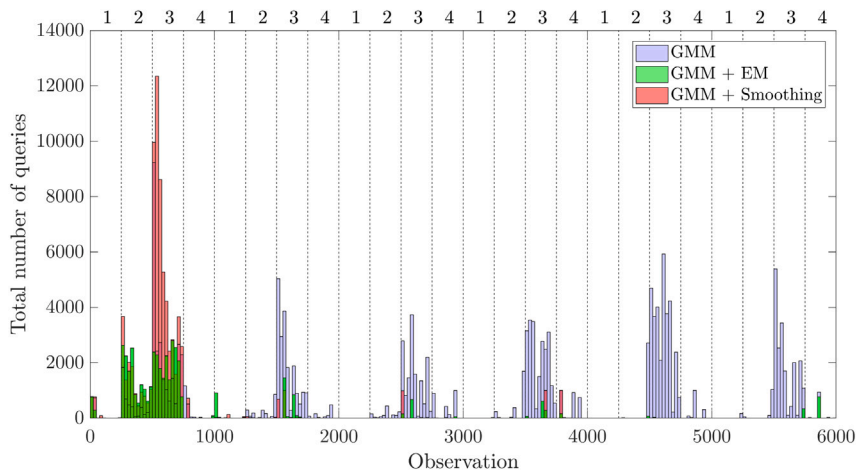


Fig. 18. Histograms showing the distribution of the number of queries for each observation in D_u from 1000 runs of risk-based active learning for (i) a GMM (blue) (ii) a GMM with EM (green) and (iii) a GMM with smoothing (red). The average locations of classes within D_u are numbered on the upper horizontal axis and transitions are denoted as a dashed line.

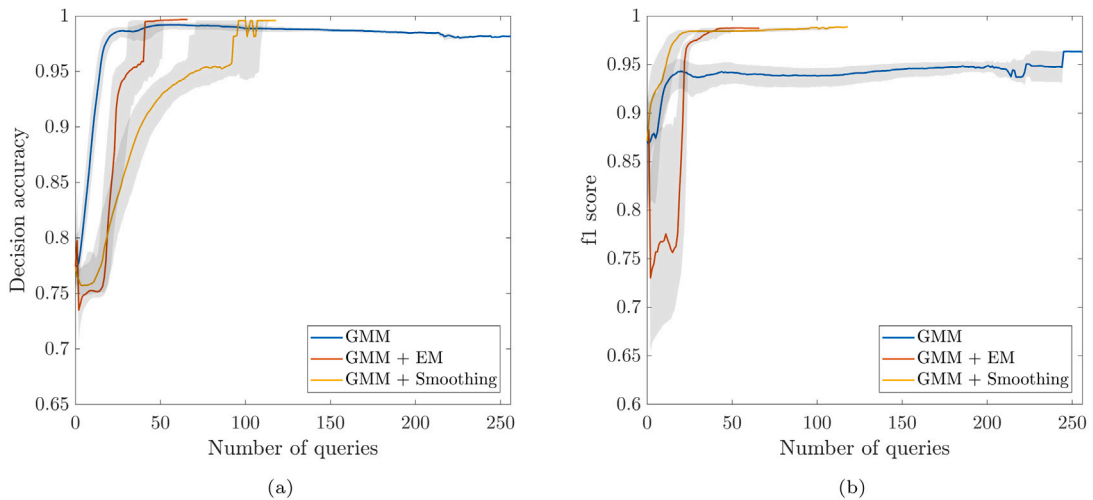


Fig. 19. Variation in median (a) decision accuracy and (b) f_1 score with number of label queries for an agent utilising a GMM learning via risk-based active learning (i) without semi-supervised updates, (ii) with semi-supervised updates via EM and (iii) with semi-supervised updated via smoothing. Shaded area shows the interquartile range.

introduction of semi-supervised learning has been detrimental to the performance of risk-based active learning, as both EM and smoothing result in a delayed increase in decision accuracy. However, when considered alongside Fig. 18, one can realise that, because semi-supervised learning results in increased querying early in the dataset, decision accuracy over the whole dataset is improved. Furthermore, a decline in decision performance is not observed for the algorithms incorporating semi-supervised learning; this result is because of the reduction in sampling bias obtained via the inclusion of unlabelled data. Fig. 19(b) shows the f_1 -score classification performance; these results provide further indication that the models learned via semi-supervised risk-based active learning better represent the underlying distribution of data and that the detrimental effects of sampling bias have been reduced.

In summary, the case study has shown that, for some applications, semi-supervised learning provides a suitable approach to reducing the effects of sampling bias. The generative distributions obtained via these semi-supervised risk-based active learning approaches better fit the underlying data distributions, whilst also establishing well-defined decision boundaries in a cost-effective manner. The semi-supervised learning approach to reducing the negative impact of sampling bias on decision-making performance is re-examined with respect to an experimental dataset in Section 5.3.

4.2. Discriminative classifiers

Probabilistic discriminative models (sometimes referred to as conditional models) provide an alternative approach to generative models for developing statistical classifiers. Whereas generative models seek to first represent the underlying joint probability

distribution $p(x, y)$, discriminative models seek to learn the predictive conditional distribution $p(y|x)$ directly. For discriminative classifiers, the mapping $f : X \rightarrow Y$ is typically specified via boundaries that partition the feature space X according to Y . In probabilistic discriminative models, these classification boundaries are ‘soft’, allowing for nondeterministic classification. For example, data lying on a binary classification boundary will be attributed equal probabilities of belonging to each class. Unlike with generative models, discriminative models do not require assumptions to be made regarding the underlying distribution of data (e.g. it was assumed earlier that data were Gaussian distributed), as only separating boundaries are learned. Thus, discriminative models do not necessarily require training datasets to be representative of the base distribution — rather, they rely on data being representative of the classification boundaries. Because of this characteristic, and considering the proximity of queries to decision-boundaries, it is believed that discriminative classifiers may provide improved robustness to the type of sampling bias prevalent in risk-based active learning.

There are numerous approaches to probabilistic discriminative modelling. Arguably, *logistic regression* is the simplest example of such a model. For logistic regression, a separating plane (or hyperplane) between two classes is learned. A sigmoid function then maps the distance of a data point from the plane to the probability of class membership. Support vector machines (SVMs) are also a popular formulation of discriminative classifier that have found application in many domains including engineering [32]. SVMs seek to find (hyper)planes with maximal margins between classes such that classification errors in the training dataset are minimised; a principal in statistical learning theory known as *empirical risk minimisation*². Furthermore, SVMs are capable of determining nonlinear classification boundaries by utilising nonlinear kernels to project data into higher dimensions in which the data are more separable. Fundamentally, SVMs are deterministic classifiers; however, the outputs can be modified to have a probabilistic interpretation via post-processing in the form of Platt scaling [33].

For its robust uncertainty quantification, a Bayesian extension of the SVM, known as the *relevance vector machine* (RVM) is selected as the probabilistic discriminative classifier for the current paper. Additionally, as RVMs are sparse models utilising a small subset of training data, they potentially have enhanced robustness to sampling bias as problematic data can be ignored. Details of RVMs and their multiclass extension (mRVMs) are provided in the following subsection.

4.2.1. Relevance vector machines

Originally introduced by Tipping in [34], the RVM is a computationally-efficient Bayesian model capable of achieving high accuracies for both regression and classification tasks via the use of basis functions specified via a kernel function and a sparse subset of the training data. In [25,35], the RVM is extended from binary classification to multiclass classification via the multinomial probit link and multinomial probit likelihood. As previously mentioned, RVMs are able to achieve high computational efficiency. This is achieved by using a subset of n^* ‘relevant’ samples from D_I such that $n^* \ll n$. This reduced subset is denoted \mathcal{A} . Two approaches for achieving this sparsity are presented in [12] and termed mRVM₁ and mRVM₂. Details of the mRVM, and specifically the formulations presented in [12], are provided in Appendix C.

Succinctly, mRVM₁ utilises a constructive approach to build \mathcal{A} . \mathcal{A} is initialised as an empty set with samples subsequently added or removed from \mathcal{A} based upon their contribution to the objective function given by the decomposed form of the marginal log-likelihood detailed in [12]. Whereas mRVM₁ provides a constructive approach to the formation of \mathcal{A} of relevance vectors, the approach termed mRVM₂ sculpts \mathcal{A} from D_I by iteratively discarding samples with weights approximately equal to zero for all classes. Here, it is worth noting that, within the mRVM₂ approach, once a sample has been removed from \mathcal{A} it cannot be reintroduced to the model. This characteristic is in contrast to mRVM₁, which allows a previously pruned sample to be reintroduced if, during a later iteration, the sample is deemed to have positive contribution. In the context of risk-based active learning, this constraint of mRVM₂ should prove to be insignificant as, within the active learning process, the model is repeatedly retrained, with all data in D_I considered.

By using the sparse subset \mathcal{A} to form the basis functions for the mRVM classification model, improvements in computational efficiency are achieved. Furthermore, in the context of risk-based active learning, it is hypothesised that probabilistic discriminative classifiers will show robustness to sampling bias over the generative classifiers — in part because detrimental or superfluous data are excluded from the model by virtue of its sparsity, and because discriminative classifiers in general, do not rely upon assumptions regarding the underlying distribution of the data.

4.2.2. Results

Both mRVM₁ and mRVM₂ were incorporated into the risk-based active-learning process and applied to the case study presented in Section 3.1.3. As it is well-studied and flexible, both models were formed using a Gaussian kernel. The Gaussian kernel function has the following form,

$$k(\mathbf{x}_i, \mathbf{x}_j) = \exp(-\gamma \|\mathbf{x}_i - \mathbf{x}_j\|^2) \quad (12)$$

where γ is introduced as a hyperparameter and is fixed at $\frac{1}{D}$ in accordance with [12,36].

As with the previous statistical classifiers, the risk-based active-learning process was applied to each model 1000 times with randomly-selected initial labelled datasets D_I .

² Here, ‘risk’ is distinct from the definition used elsewhere in the current paper. A mapping between the two could be formulated by considering the costs associated with misclassifications, however, this is outside the scope of the current paper.

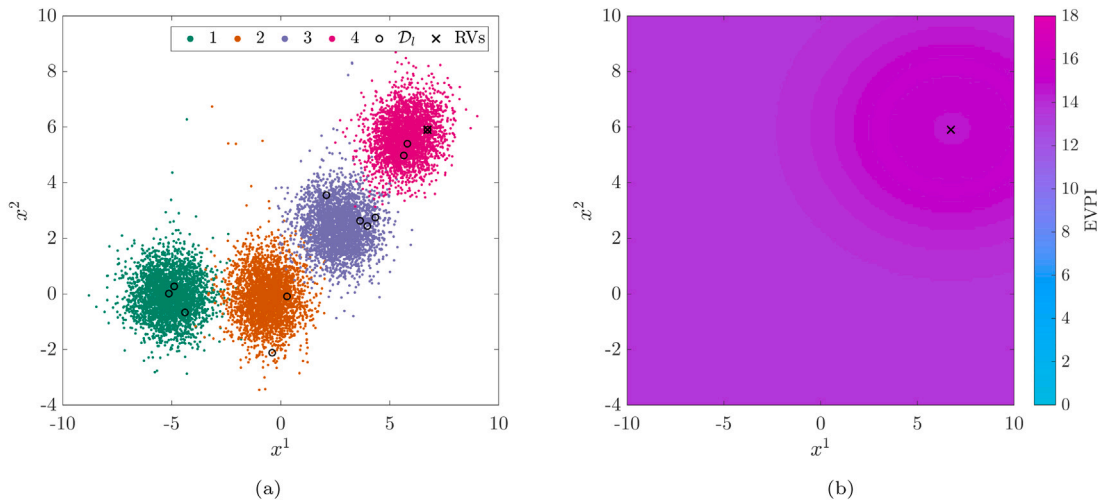


Fig. 20. An $mRVM_1$ statistical classifier $p(y_i|x_i; \mathbf{W})$ prior to risk-based active learning; relevance vectors are shown (x). (a) shows the final model overlaid onto the data with labelled data \mathcal{D}_l encircled and (b) shows the resulting EVPI over the feature space.

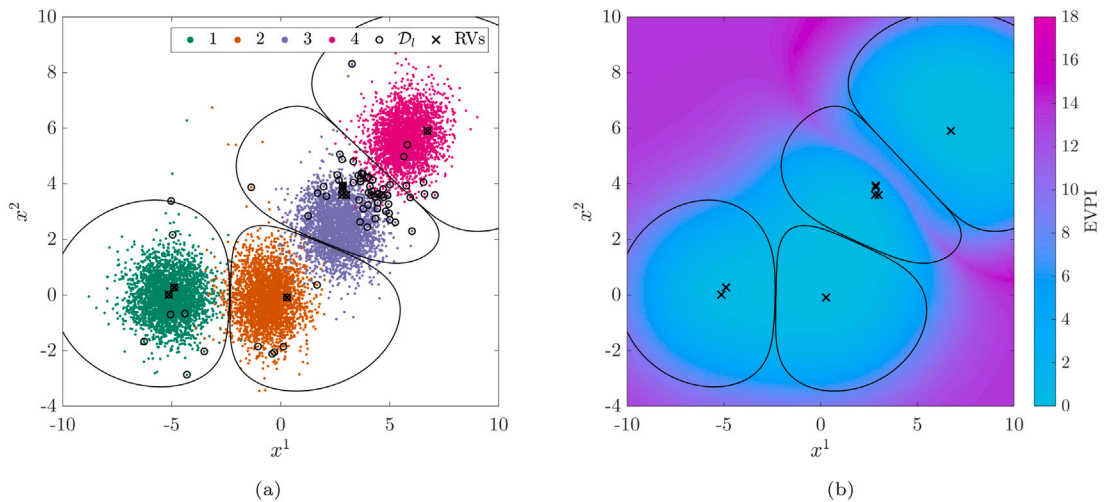


Fig. 21. An $mRVM_1$ statistical classifier $p(y_i|x_i; \mathbf{W})$ after risk-based active learning; relevance vectors (x) and contours (lines) denoting $p(y_i = k|x_i) = 0.5$ are shown. (a) shows the final model overlaid onto the data with labelled data \mathcal{D}_l encircled and (b) shows the resulting EVPI over the feature space.

Figs. 20 and 21 show, from one of the 1000 repetitions, an $mRVM_1$ classifier before and after the risk-based active learning process, respectively.

Fig. 20 shows that the $mRVM_1$ model, subject to the convergence criteria presented in [12], was unable to effectively discriminate between classes when learned from the initial limited subset of training data. In Fig. 20(a), the absence of contours corresponding to $p(y_i = k|x_i) = 0.5$ indicates that, if using the initial model shown, one would be unable to classify data with a high degree of confidence. This result is corroborated by the approximately uniform EVPI over the feature space, presented in Fig. 20(b).

Fig. 21 indicates that, following the risk-based active learning procedure, the updated $mRVM_1$ classifier has established classification boundaries — the contours corresponding to $p(y_i = k|x_i) = 0.5$ are now visible and, in general, are a good fit to the data. In Fig. 21(a), similar to the GMM, the risk-based active learning algorithm preferentially queries data close to the boundary between Class 3 (significant damage) and Class 4 (critical damage). From Fig. 21(b), it can be seen that a band of high EVPI has been established close to the classification boundary between classes 3 and 4. Again, this band corresponds to a decision boundary and indicates the region of the feature space where a decision-making agent should inspect the structure; below this band the agent can be confident that the optimal decision is ‘do nothing’, and above this band the agent can be confident that the optimal decision is ‘perform maintenance’.

Similar to Figs. 20 and 21, Figs. 22 and 23 show, from one of the 1000 repetitions, an $mRVM_2$ classifier before and after the risk-based active-learning process.

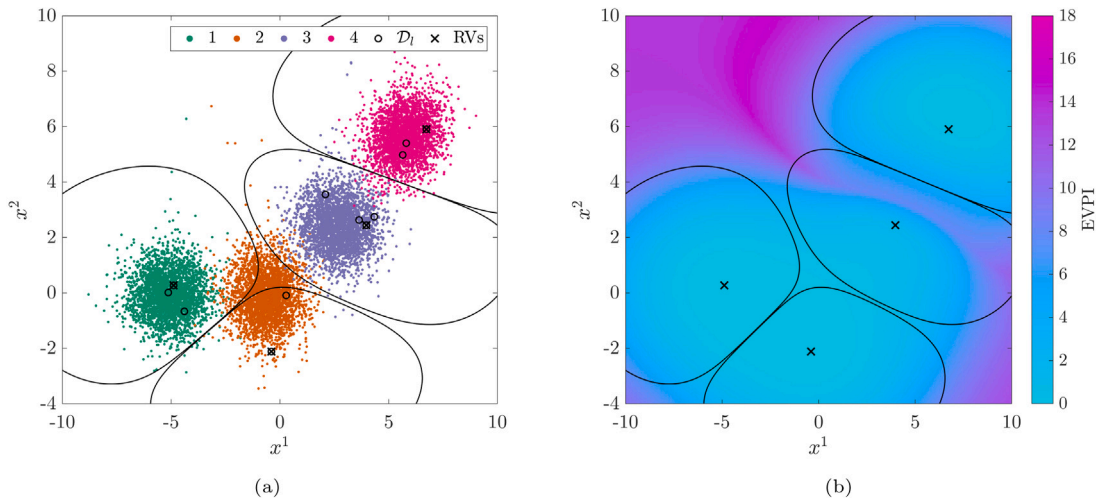


Fig. 22. An $mRVM_2$ statistical classifier $p(y_i | \mathbf{x}_i; \mathbf{W})$ prior to risk-based active learning; relevance vectors (x) and contours (lines) denoting $p(y_i = k | \mathbf{x}_i) = 0.5$ are shown. (a) shows the final model overlaid onto the data with labelled data \mathcal{D}_l encircled and (b) shows the resulting EVPI over the feature space.

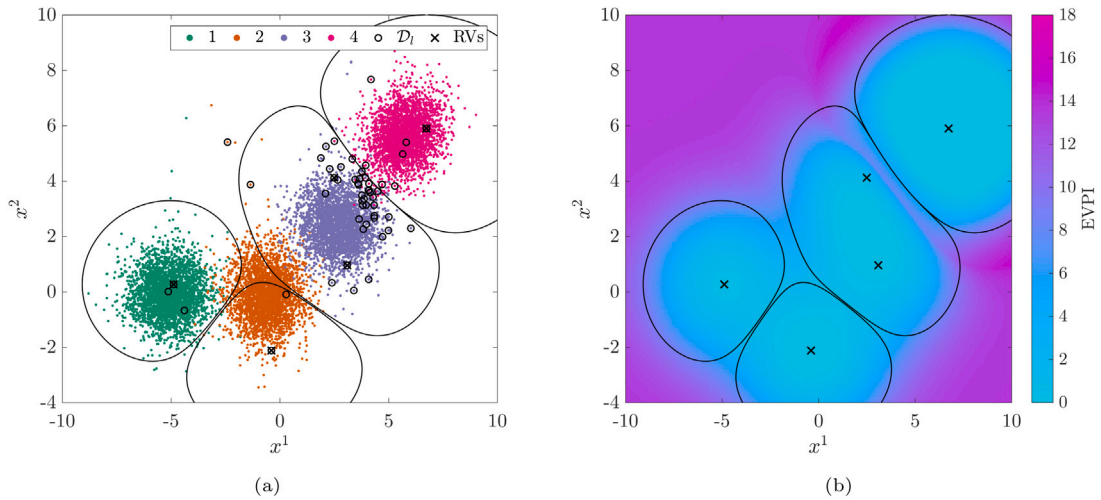


Fig. 23. An $mRVM_2$ statistical classifier $p(y_i | \mathbf{x}_i; \mathbf{W})$ after risk-based active learning; relevance vectors (x) and contours (lines) denoting $p(y_i = k | \mathbf{x}_i) = 0.5$ are shown. (a) shows the final model overlaid onto the data with labelled data \mathcal{D}_l encircled and (b) shows the resulting EVPI over the feature space.

Unlike $mRVM_1$, the $mRVM_2$ approach to relevance vector selection resulted in an initial model capable of discriminating between the four classes — as demonstrated by the contours corresponding to $p(y_i = k | \mathbf{x}_i) = 0.5$ visible in Fig. 22. In general, the discriminative boundaries fit the data well, except for that corresponding to Class 2 (minor damage). The resulting EVPI distribution over the feature space, shown in Fig. 22(b), indicates that a decision boundary (albeit somewhat nebulous) has been established, even from the very limited labelled data.

It can be seen from Fig. 23(a) that, once again, the active learning algorithm results in data being queried preferentially close to the boundary between classes 3 and 4. It can be seen from the probability contours that the updated model fits the data marginally better than the initial model. From Fig. 23(b), it can be seen that the inferred decision boundary is now more well-defined, represented by the narrow band of high EVPI close to the classification boundary between classes 3 and 4.

From the EVPI surfaces shown in Figs. 20(b), 21(b), 22(b), and 23(b), it is apparent that, when using an $mRVM$ model, data far from those already observed is classified with high uncertainty, meaning that high EVPI would be associated with any outlying observations. This result is in contrast to EVPI surfaces obtained when utilising generative models, where, as discussed in Section 3.1.4, sampling bias resulted in over-confident predictions for outlying data. The decision support implications for the differing ‘attitudes’ towards outliers, induced by the choice of a generative versus discriminative classifier, are discussed further in Section 6.

Figs. 24(a) and 24(b) show the class proportions in the labelled dataset \mathcal{D}_l , averaged over the 1000 runs of risk-based active learning applied to $mRVM_1$ and $mRVM_2$, respectively. Both figures show similar trends in class proportions as the original GMM,

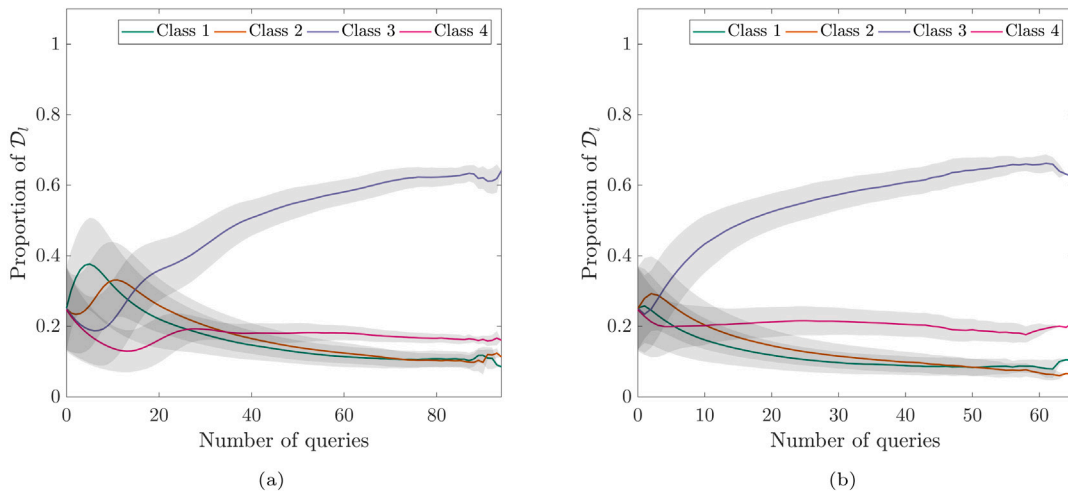


Fig. 24. Variation in class proportions within D_l with number of label queries for an agent utilising an (a) $mRVM_1$ and (b) $mRVM_2$ statistical classifier learned from D_l extended via risk-based active learning. Shaded area shows $\pm 1\sigma$.

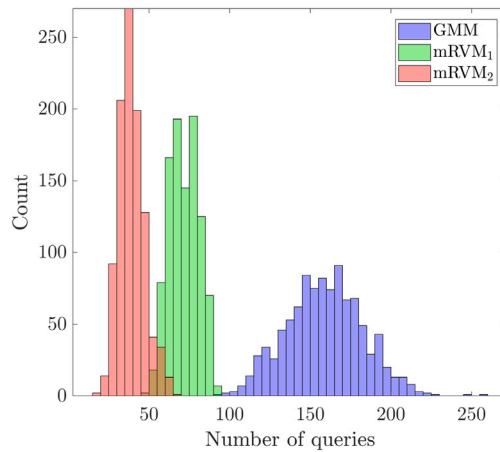


Fig. 25. Histograms showing the distribution of the number of queries from 1000 runs of the risk-based active learning of (i) a GMM (blue) (ii) an $mRVM_1$ (green) and (iii) an $mRVM_2$ (red) statistical classifier.

with Class 3 disproportionately represented ($\sim 60\%$) in the final iteration of D_l , above classes 1, 2, and 4. Here, it is worth recognising from Figs. 21 and 23, that within the sparse subset \mathcal{A} , the classes are more equally represented. For $mRVM_1$ Class 1 corresponds to two of the eight relevance vectors, classes 2 and 4 each correspond to one, and Class 3 corresponds to 4 of the eight relevance vectors. Similarly, for $mRVM_2$, classes 1, 2 and 4 are each represented by 1 relevance vector, with Class 3 represented by two out of the five relevance vectors. This result suggests that utilising a sparse subset of data somewhat mitigates the prevalence of sampling bias in the training data.

The histograms presented in Fig. 25 show the distributions of the number of queries made by the risk-based active learning algorithm as applied to $mRVM_1$ and $mRVM_2$ for each of the 1000 runs. Both $mRVM_1$ and $mRVM_2$ result in fewer queries than the GMM. Again, this result is significant, as it indicates that expenditure on queries has been reduced. Furthermore, the variance of the distributions corresponding to the $mRVM$ algorithms is reduced compared to that for the GMM, indicating that relatively few queries are made, consistently.

Fig. 26 compares the total number of queries for each index in D_u over the 1000 repetitions of risk-based active learning conducted using a GMM, an $mRVM_1$ classifier, and an $mRVM_2$ classifier. It can be seen from Fig. 26, that data points queried by the GMM formulation also tend to be queried by the $mRVM$ formulations, though with a greatly-reduced total. In contrast to the semi-supervised approaches presented in Section 4.1.3, the risk-based active learning algorithms built upon $mRVM$ s query data more heavily from the later occurrences of classes 3 and 4. This observation can, in part, be attributed to the fact that the high-EVPI regions associated with the decision boundary inferred via the $mRVM$ models are slightly more nebulous than those obtained via semi-supervised learning. In addition, when using the $mRVM$ classifiers, one would expect outlying data to be queried at any time during the risk-based active learning process because of the uncertainty in the class-label prediction.

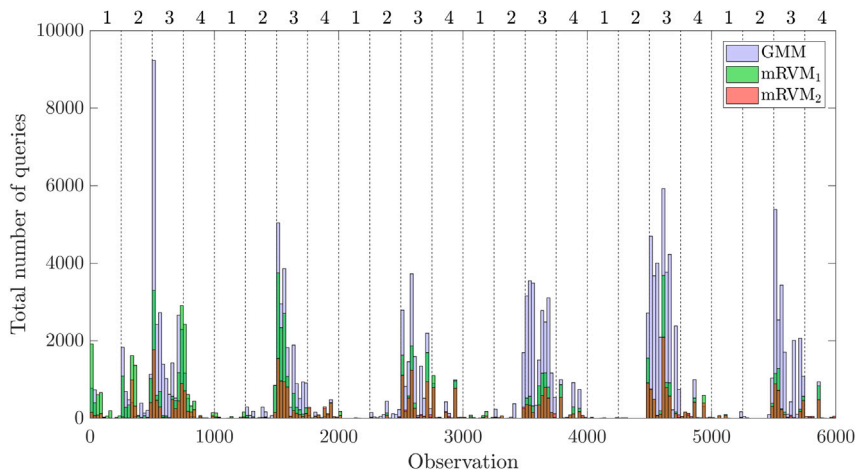


Fig. 26. Histograms showing the distribution of the number of queries for each observation in D_u from 1000 runs of risk-based active learning for (i) a GMM (blue) (ii) an $mRVM_1$ (green) and (iii) an $mRVM_2$ (red) statistical classifier. The average location of classes within D_u are numbered on the upper horizontal axis and transitions are denoted as a dashed line.

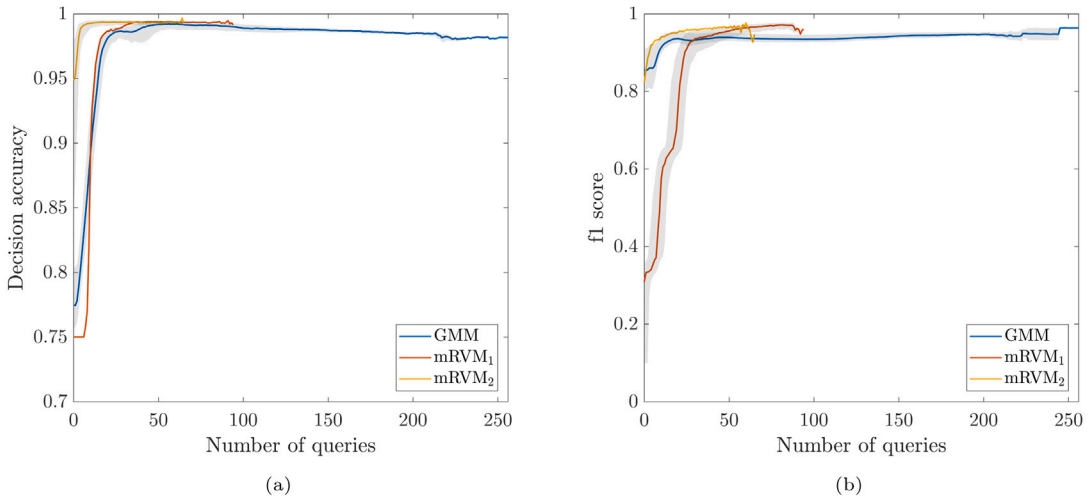


Fig. 27. Variation in median (a) decision accuracy and (b) f_1 score with number of label queries for an agent utilising (i) a GMM (ii) an $mRVM_1$ and (iii) an $mRVM_2$ statistical classifier learned via risk-based active learning. Shaded area shows the interquartile range.

Fig. 27 provides a comparison of the median decision accuracies and f_1 -scores throughout the querying processes aggregated from the 1000 runs of the risk-based active learning process, applied to the $mRVM_1$ and $mRVM_2$ classifiers. It can be seen from Fig. 27(a), that both $mRVM_1$ and $mRVM_2$ result in superior decision accuracy performance over the GMM, plateauing at a slightly higher decision accuracy and reaching that plateau earlier. Although $mRVM_1$ begins with a lower decision accuracy than the GMM, the performance of the decision-maker rapidly improves with queries made. On the other hand, $mRVM_2$ begins with significantly higher decision accuracy than both the GMM and the $mRVM_1$ classifiers, yet still improves rapidly with the early queries. From Fig. 27(a), an important observation regarding the use of the discriminative models is that, for later queries, there is no decline in decision-making performance as additional labelled data are obtained, indicating that such models, as hypothesised, possess improved robustness to sampling bias. Fig. 27(b) shows the f_1 -score classification performance of the models on the test dataset. Both models achieve improved classification performance over the GMM.

In summary, for the current case study, substituting the generative GMM classifier out of the risk-based decision process, in favour of RVM-based discriminative models, has mitigated the adverse effects on decision-making performance caused by the inherent bias introduced via the risk-based active learning process. Furthermore, well-defined decision boundaries were inferred from a reduced number of queries as compared to the generative model. These results were achieved as discriminative models do not rely on prior assumptions regarding the distribution of data.

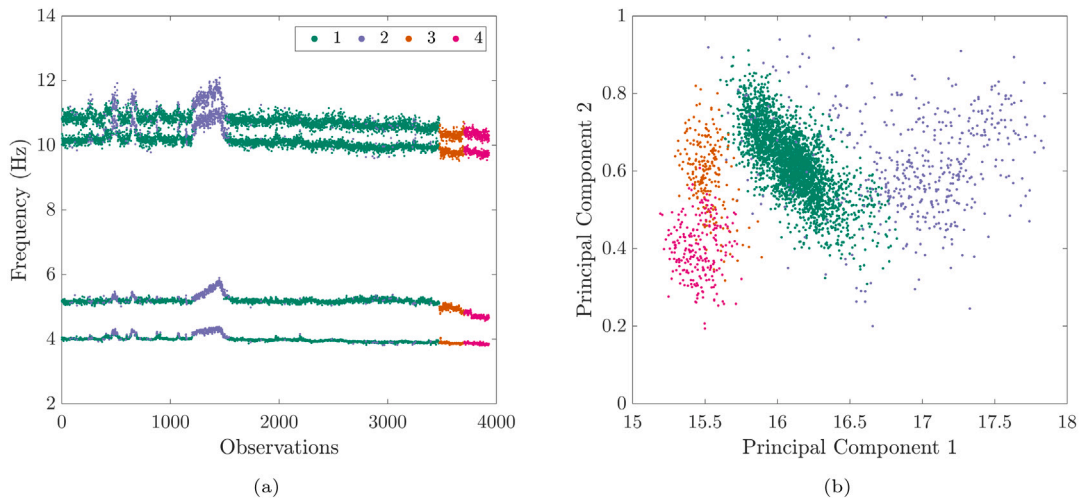


Fig. 28. Visualisation of the Z24 Bridge dataset in (a) the discrete time and (b) the projected feature space.

5. Case study: Z24 Bridge dataset

In the previous section, the effects of sampling bias on decision-making performance, and approaches for counteracting these effects, were demonstrated on a somewhat idealised case study in which data were Gaussian distributed and classes were fairly separable. In the current section, the effectiveness of semi-supervised learning, and discriminative classifiers, at mitigating the effects of sampling bias, are assessed using an experimental dataset obtained from the Z24 Bridge [37].

The Z24 bridge was a concrete highway bridge in Switzerland, situated between the municipalities of Koppigen and Utzenstorf and near the town of Solothurn. The bridge was the subject of a cross-institutional research project (SIMCES). The purpose of this project was to generate a benchmark dataset and prove the feasibility of vibration-based SHM [38,39]. Because of the presence of varying structural and environmental conditions, the benchmark dataset has seen wide use in research focussed on SHM and modal analysis.

Prior to its demolition, the Z24 bridge was instrumented with sensors, and for a period of 12 months, the dynamic response of the structure and the environmental conditions were monitored. The quantities measured included the accelerations at multiple locations, air temperature, deck temperature, and wind speed [40].

Using the dynamic response data obtained during the monitoring campaign, the first four natural frequencies of the structure were obtained [38]. A visualisation of these natural frequencies can be seen in Fig. 28. Fig. 28(a) shows the four natural frequencies in discrete time, whereas Fig. 28(b) shows a two-dimensional projection of these frequencies obtained via principal component analysis. The first two principal components, shown in Fig. 28(b), account for approximately 95% of the variability in the dataset. The principal components are provided for visualisation purposes only. In the current paper, the analyses presented for the Z24 dataset use the first four natural frequencies as features.

In total, the dataset consists of 3932 observations. Towards the end of the monitoring campaign – from observation 3476 onwards – incremental damage was introduced to the structure. Additionally, throughout the campaign, the bridge experienced low temperatures, and as such, the structure exhibited cold temperature effects, particularly noticeable between observations 1200 and 1500. It is believed that the increased natural frequencies observed during these periods are a result of stiffening in the bridge deck induced by very low ambient temperatures. From these data, a four-class classification problem can be defined such that $y_i \in \{1, 2, 3, 4\}$:

- Class 1: normal undamaged condition (green)
- Class 2: cold temperature undamaged condition (blue)
- Class 3: incipient damage condition (orange)
- Class 4: advanced damage condition (pink).

In accordance with [10], it is assumed here that the data obtained after the introduction of damage can be separated into 2 halves; the earlier half corresponding to incipient damage and the later half corresponding to advanced damage. This assumption is deemed to be reasonable, given the incremental nature of the damage progression [37].

Upon examination of Fig. 28(b), it becomes apparent that there is significant overlap between Class 1 and Class 2. There is also some degree of overlap between the data corresponding to classes 1 and 3, classes 2 and 3, and classes 3 and 4. Moreover, the distribution of Z24 Bridge data deviates somewhat from Gaussianity. Finally, it is obvious that class imbalance is present in the dataset, with most observations corresponding to Class 1. Combined, these characteristics of the Z24 Bridge dataset should represent a greater challenge to the risk-based active-learning approaches demonstrated on a more idealised case study in Section 4.

Table 5
The utility function $U(y_{t+1})$.

y_{t+1}	$U(y_{t+1})$
1	10
2	10
3	-50
4	-1000

Table 6
The utility function $U(d_t)$ where $d_t = 0$ and $d_t = 1$ denote the 'do nothing' and 'repair' actions, respectively.

d_t	$U(d_t)$
0	0
1	-100

Table 7
The conditional probability table $P(y_{t+1}|y_t, d_t)$ for $d_t = 0$.

		y_{t+1}			
		1	2	3	4
y_t	1	0.7	0.28	0.015	0.005
	2	0.43	0.55	0.15	0.05
	3	0	0	0.8	0.2
	4	0	0	0	1

5.1. Decision process

As with the previous case study, an O&M decision process must be specified for the Z24 Bridge dataset in order to apply a risk-based active learning approach to classifier development. As the bridge was demolished over two decades ago at the time of writing, here, a simple binary decision process ('do nothing' or 'perform maintenance'), similar to that detailed in Section 3.1, is considered. Because of the similar nature of the decision processes considered, the graphical representation of the process provided by the influence diagram in Fig. 2, applies also to the current case study. Although, the influence diagram is consistent, the parameters populating the conditional probability distributions and utility functions must be specified to reflect the operational context of the Z24 Bridge. A discussion of the assumptions used to specify these distributions and utility functions is provided in [10].

For brevity, it is assumed that utilities can be attributed directly to the four health states comprising the Z24 dataset, without the need for a fault tree. Here states 1 and 2 are assigned some small positive utility as reward for the bridge being functional, with minimal risk of failure. The incipient damage state is assigned a negative utility of moderate magnitude. This value is to reflect a possible reduction in operating capacity (e.g. bridge closure), and low-to-moderate risk of failure. Class 4, which corresponds to the advanced damage condition, is assigned a very large negative utility. This value reflects the severe consequences associated with the collapse of a bridge. The utility function $U(y_t)$ is provided in Table 5.

The utilities associated with the candidate actions in the domain of d_t are given by the utility function $U(d_t)$ and are presented in Table 6. Once again, it is assumed that the action $d_t = 0$ ('do nothing') has zero utility and that the action $d_t = 1$ ('perform maintenance') has negative utility.

Given the decided action $d_t = 0$, the health-state transitions are specified using the same assumptions as with the previous case study; namely, that the structure monotonically degrades and has a propensity to remain in the current state. Unlike the previous case study, however, states 1 and 2 both correspond to an undamaged condition of the bridge and instead reflect differing environmental conditions. As such, transitions both to and from these states must be possible according to the transition model. The earlier assumption that there is a propensity to remain in the current state is invoked once again; it is simply asserted that if there was a cold temperature for the most recent measurement, it is probable that the next measurement will also be made at a cold temperature. Likewise, the same reasoning is applied to the normal condition data. These assumptions are represented in the conditional probability distribution shown in Table 7.

The portion of the transition model for $d_t = 1$ is presented in Table 8. Again, this distribution is specified via the assumption that the act of performing maintenance returns the bridge to an undamaged condition with high probability. Since there are two states corresponding to the undamaged condition of the bridge, the transition model must be specified such that it is ensured that the probability of returning to each of the undamaged condition states is independent of the action taken, i.e. it must be asserted that the weather condition is not influenced by the action taken. The procedure by which this constraint is imposed is outlined in [10].

Finally, the cost of inspection is specified to be $C_{\text{ins}} = 30$. The moderate cost is intended to reflect resources required to inspect a large-scale structure such as the Z24 Bridge.

Table 8
The conditional probability table $P(y_{t+1}|y_t, d_t)$ for $d_t = 1$.

		y_{t+1}			
		1	2	3	4
y_t	1	0.7173	0.2857	0	0
	2	0.4388	0.5612	0	0
	3	0.5996	0.3904	0.01	0
	4	0.5996	0.3904	0	0.01

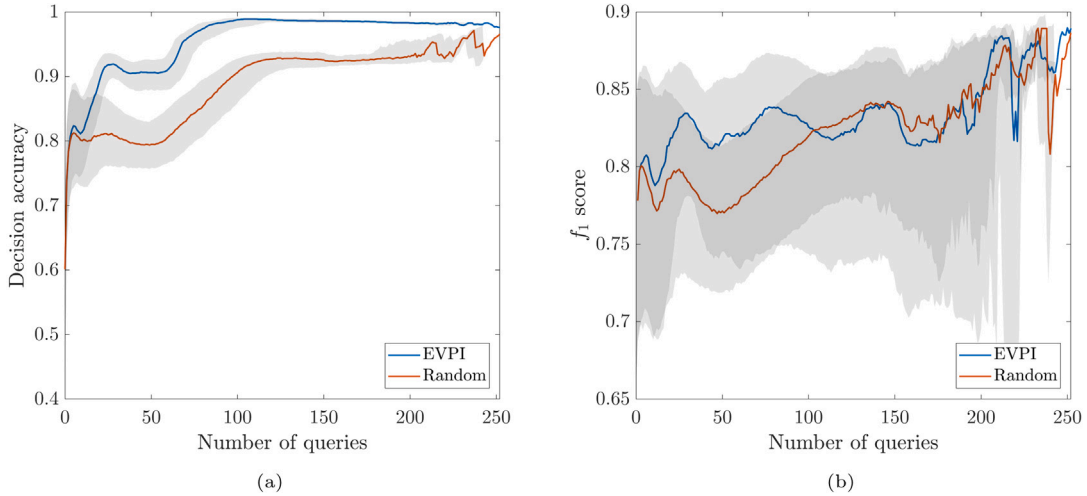


Fig. 29. Variation in median (a) decision accuracy and (b) f_1 score with number of label queries for an agent utilising a GMM learned from D_l extended via (i) risk-based active querying (EVPI) and (ii) random sampling (Random). Shaded area shows the interquartile range.

5.2. Results: Gaussian mixture model

To facilitate comparison, risk-based active learning was applied to a Gaussian mixture model learned via the Bayesian approach outlined in Section 3.1.2. For the Z24 Bridge case study, the features used to discriminate between the four health states of the structure were the first four natural frequencies shown in Fig. 28(a), such that $x_t \in \mathbb{R}^4$.

The dataset was separated into two halves. One half formed the training dataset D , with the other half forming an independent test set. A small (0.3%) random subset of D was used to initialise the labelled dataset D_l . The remaining data were assigned to D_u to be sequentially evaluated with respect to the decision process in the risk-based active-learning process. Once again, 1000 repetitions of the active learning process were conducted, each with randomly-initialised D_l .

Fig. 29 shows the median and interquartile range for the decision accuracy and f_1 -score as a function of number of queries. Additionally, the performances measures are provided for an agent utilising a GMM trained using an equivalent number of samples obtained via unguided (random) querying. From Fig. 29(a), it can be seen that risk-based active learning results in decision-making performance improving at an increased rate compared to random sampling. However, yet again, a gradual decline in decision accuracy can be observed over later queries when said queries are guided by EVPI. Fig. 29(b) shows that the classification performances of the predictive model are fairly similar for EVPI-based and random querying. Each gradually improves with number of queries, albeit non-monotonically. The large interquartile ranges for both approaches to querying indicate that the classification performance is highly sensitive to which data are available in the supervised learning process — a phenomenon reported in [7].

Fig. 30 shows the mean proportions that each class contributes to the labelled dataset D_l throughout the learning process. Fig. 30(a) provides the class proportions for EVPI-based querying, whereas Fig. 30(b) provides the proportions for random querying. Logically, both datasets show an increase in the proportion for Class 1 as this is the first class to present itself from the perspective of the decision-maker. One difference between datasets is that the risk-based active-learning approach results in Class 2 (cold temperature) gaining an elevated level of representation in D_l ; this is perhaps understandable if one considers the overlap present in the dataset, especially that between Class 2 and Class 3. Throughout later queries, one can see that class 1 gains increased representation in D_l . This increase correlates with the slight decline in decision accuracy observed, indicating that data acquired during this time cause the cluster corresponding to class 1 to be altered such that it is suboptimal for decision-making.

Fig. 31 shows the total number of times each observation in D_u was queried throughout the 1000 runs, with the observations in D_u presented for reference. As one would expect, random sampling results in uniform querying across the dataset. On the other hand, the risk-based active learning approach exhibits definite preferences for specific observations. One tends to see an increase in observation data corresponding to previously unseen classes; however, the exception to this is Class 4 (advanced damage) —

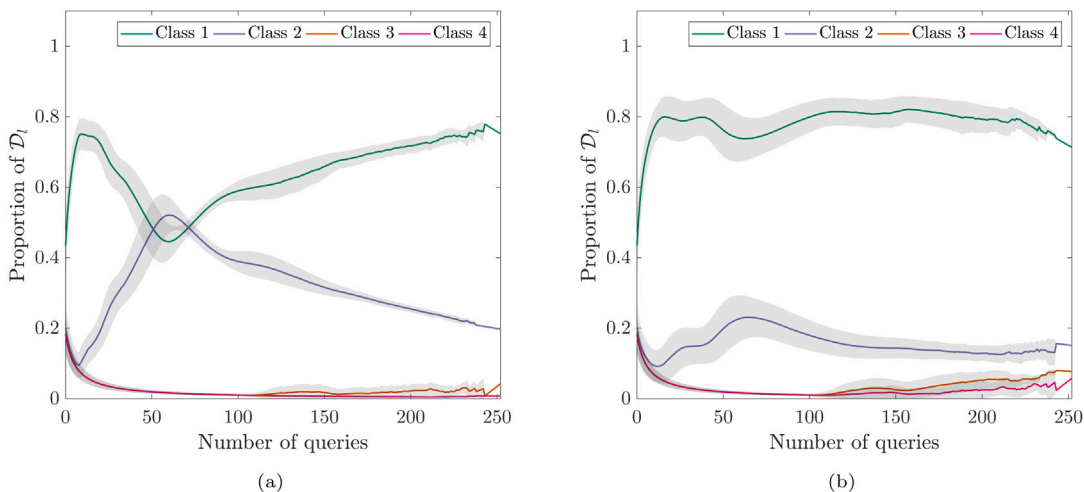


Fig. 30. Variation in class proportions within D_l with number of label queries for an agent utilising a GMM learned from D_l extended via (a) risk-based active querying and (b) random sampling. Shaded area shows $\pm 1\sigma$.

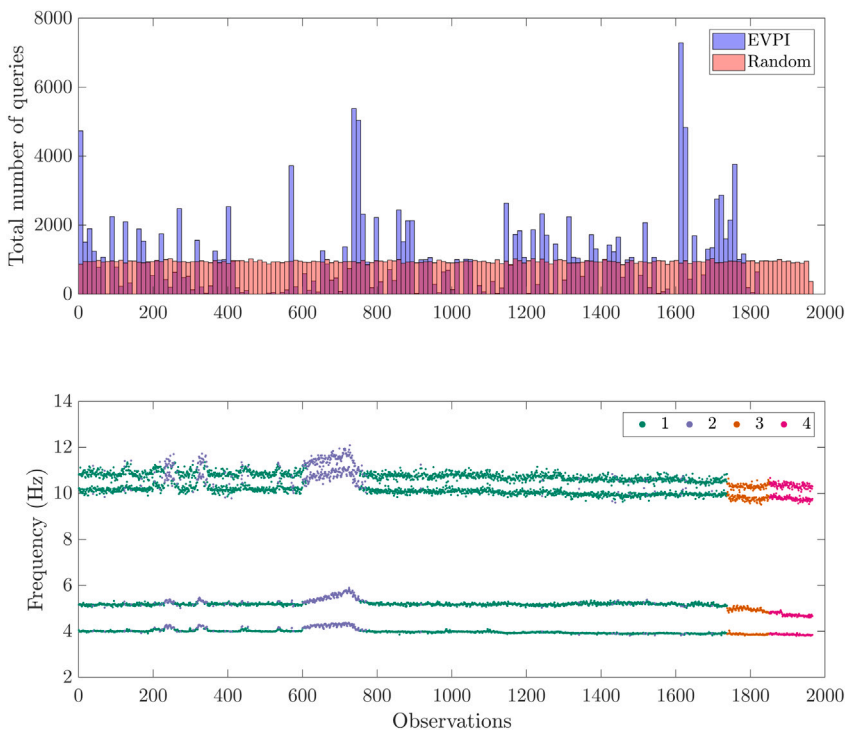


Fig. 31. Histograms showing the distribution of the number of queries for each observation in D_u over 1000 runs when adopting (i) risk-based active learning (EVPI) and (ii) random sampling (Random) in order to learn a GMM. Below the histograms, a visualisation of the unlabelled dataset D_u is provided for reference.

indicating that the data in the vicinity of the cluster corresponding to Class 4 have low value of information. This result is, of course, because a decision-maker observing data in this region of the feature space can be certain that the optimal policy is ‘perform maintenance’ because of the extremely high cost associated with this class. The most heavily-queried data points are in the vicinity of observation number 1600. These data belong to classes 1 and 2 — both undamaged classes. The fact that they are so heavily queried, however, implies that they consistently lie close to the decision boundary between the candidate actions ‘do nothing’ and ‘perform maintenance’.

To summarise, when utilising a GMM as the statistical classifier within a decision process for the Z24 Bridge dataset, one can obtain improved decision-making performance; however, as with the previous case study, a decline in performance still occurs with queries that are made later in the learning process.

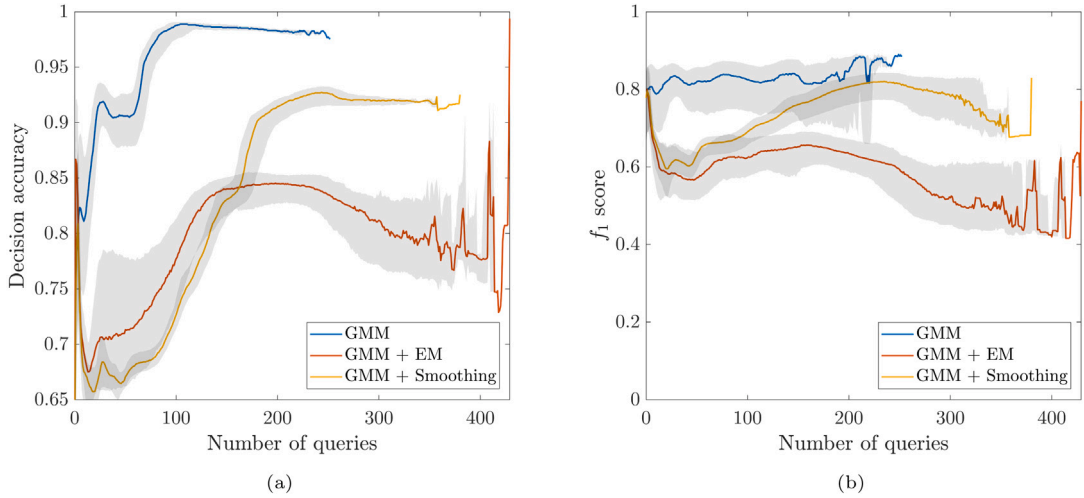


Fig. 32. Variation in median (a) decision accuracy and (b) f_1 score with number of label queries for an agent utilising a GMM learning via risk-based active learning (i) without semi-supervised updates, (ii) with semi-supervised updates via EM and (iii) with semi-supervised updated via smoothing. Shaded area shows the interquartile range.

5.3. Results: Semi-supervised learning

The modified approaches to risk-based active learning, incorporating semi-supervised learning via EM and latent-state smoothing, were each applied to the Z24 Bridge case study.

Fig. 32 shows, for each algorithm, the median decision and classification performances as a function of the number of queries. Additionally, the performances for the risk-based active-learned GMM are provided for comparison.

It is immediately apparent from both Figs. 32(a) and 32(b), that the semi-supervised approaches have failed in improving robustness to sampling bias; in fact, the semi-supervised learning approaches have been detrimental to decision-making performance. Neither expectation-maximisation updates to the generative model parameters, nor pseudo-labelling of unlabelled data via a smoothing algorithm, result in a classifier that surpasses the standard GMM in terms of decision accuracy. Similarly, both approaches fail to surpass the standard GMM in terms of classification performance.

For the current case study, the poor performance of the semi-supervised methods can be attributed to the fact that the algorithms further increase dependence on the key assumption required for learning generative models; namely, that the density estimations selected are representative of the underlying distribution. This increased dependence arises as the generative models, learned from an unrepresentative dataset, are being used to inform the pseudo-labels that are subsequently used to update the model. As the Z24 Bridge data is non-Gaussian and a Gaussian density estimation was used, the semi-supervised steps in the modified risk-based learning algorithm yield biased pseudo-labels and therefore exacerbate the effects of sampling bias. These results correspond with the results of the active learning EM approach in [41], in which introducing EM to the active learning process degrades the classification performance of a GMM on the Z24 Bridge dataset.

Fig. 32 shows that the smoothing approach to semi-supervised learning outperforms EM in terms of decision accuracy and f_1 -score. This observation is likely because the smoothing algorithm utilises temporal information from the transition model. This additional information source somewhat tempers the dependence on the (biased) classification model that one solely relies on in the EM approach.

Fig. 33 shows the effective class proportions for data in the training set \mathcal{D} , throughout the risk-based active learning of semi-supervised GMMs. From these figures one can see that the semi-supervised algorithms initially induce a heavy bias in favour of Class 1 within the training dataset. These class proportions are likely to inflate both the component mixture weights and the covariance for the cluster belonging to Class 1. This initial bias explains the dramatic decrease in decision accuracy and f_1 -score that can be observed over the first few queries in Fig. 32.

In addition to decreasing the decision-making performance, the introduction of semi-supervised learning to risk-based active learning also has a detrimental effect on the number of queries made. Fig. 34 shows the distribution of the number of queries made over 1000 randomly-initialised repetitions. It is clear from Fig. 34, that both EM and latent-state smoothing result in a higher mean for the number of queries made, when compared to the standard GMM. This result implies that using these modified approaches to risk-based active learning result in increased expenditure on structural inspections. Interestingly, the distribution of the number of queries made using the risk-based active learning algorithm that incorporates EM, is bimodal. The dominant mode corresponds to worsened performance in comparison to the standard GMM; however, the secondary mode corresponds to an improved performance. This result suggests that there exists a modality of the learning algorithm in which the EM algorithm can converge to a classifier that results in a well-defined decision boundary. As the variability in results arises because of the randomisation of the initial labelled

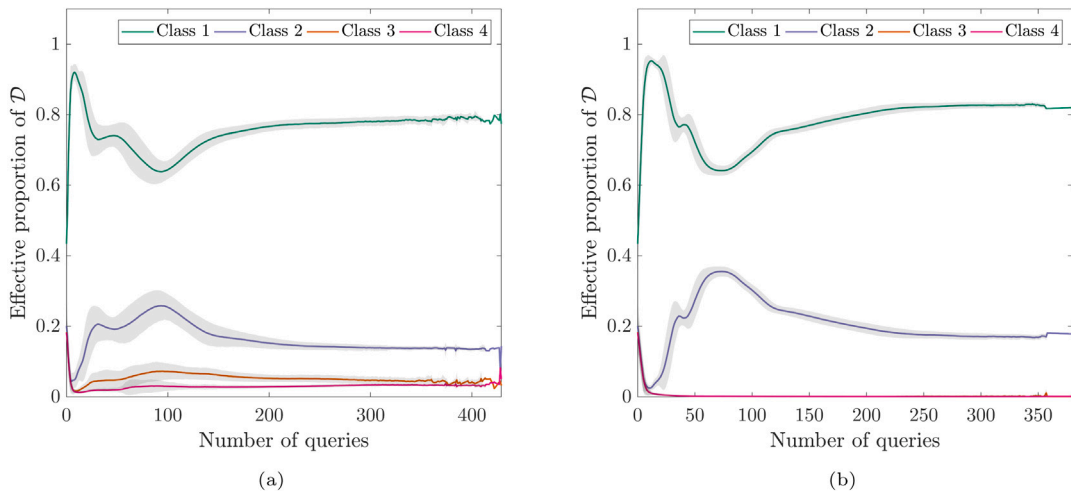


Fig. 33. Variation in class proportions within D_l with number of label queries for an agent utilising a GMM learned from D_l extended risk-based active learning with semi-supervised updating via (a) expectation-maximisation and (b) latent-state smoothing. Shaded area shows $\pm 1\sigma$.

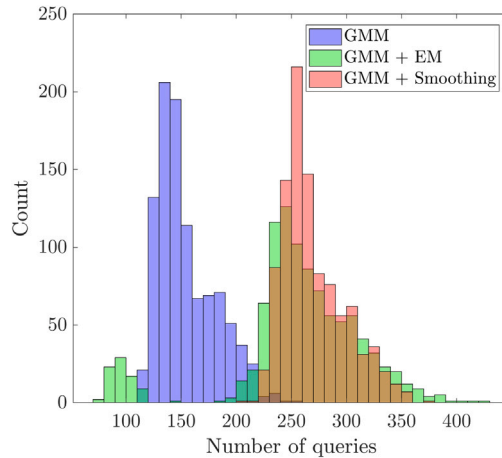


Fig. 34. Histograms showing the distribution of the number of queries from 1000 runs of the risk-based active learning of (i) a GMM (blue) (ii) a GMM semi-supervised via expectation-maximisation (green) and (iii) a GMM semi-supervised via latent-state smoothing (red).

dataset D_l , it can be inferred that the occurrence of this secondary modality is conditional on which labelled data are available for learning the fully-supervised model, prior to the EM updates.

Fig. 35 shows the total number of queries for each observation index in D_u , over the 1000 repetitions conducted for each of the two variants of the risk-based active learning process. Additionally, the queries made by the agent utilising the standard GMM are provided for comparison. As one would expect, given the histograms in Fig. 34, the queries made by the semi-supervised algorithms all but obscure those made when using the standard GMM. These semi-supervised algorithms result in data being heavily queried across many observations in D_u , indicating that a well-defined decision boundary is not obtained — an effect of the exacerbated sampling bias. Here, it is worth noting that, despite numerous queries elsewhere in the dataset, Class 4 remains more-or-less unqueried. Again, this result indicates that due to the extreme cost associated with the advanced damage state, a decision-maker will confidently select the action ‘perform maintenance’ when in the vicinity of the cluster corresponding to Class 4.

In summary, the introduction of semi-supervised learning via EM, and latent-state smoothing, resulted in a degradation in the performance of an agent tasked with selecting actions within a maintenance decision process defined around the Z24 Bridge dataset. This degradation occurred because of the interaction between important characteristics of the dataset (class imbalance, non-Gaussianity, and non-separability) and the strengthened assumptions (i.i.d training data, and representative distribution forms) invoked via the semi-supervised learning algorithms. These interactions resulted in the amplification of sampling bias, leading to worsened performance.

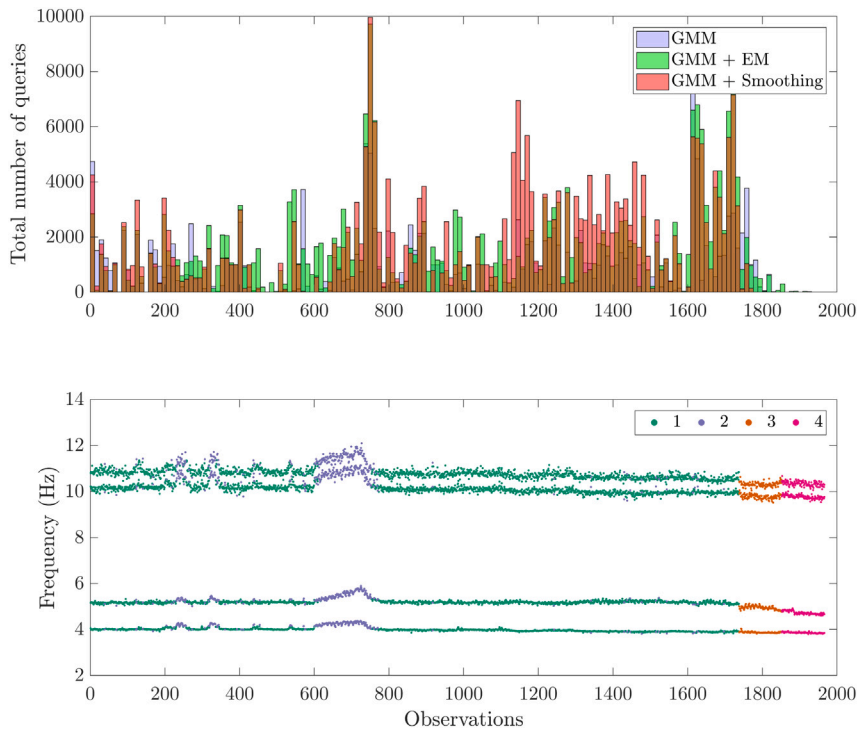


Fig. 35. Histograms showing the distribution of the number of queries for each observation in D_u from 1000 runs of risk-based active learning for (i) a GMM (blue) (ii) a GMM with EM (green) and (iii) a GMM with smoothing (red). Below the histograms, a visualisation of the unlabelled dataset D_u is provided for reference.

5.4. Results: Discriminative classifiers

Discriminative classifiers, in the form of $mRVM_1$ and $mRVM_2$, were substituted into decision processes in place of the GMM. Risk-based active learning was employed to develop these classification models for the Z24 Bridge dataset.

The decision accuracy and f_1 -score as functions of the number of queries made are provided for the risk-based active learning of $mRVM_1$ and $mRVM_2$ in Fig. 36.

From Fig. 36(a), it can be seen that both $mRVM_1$ and $mRVM_2$ surpass the GMM in terms of decision-making performance. $mRVM_1$ begins with very low performance, once again indicating that the constructive approach to selecting relevance vectors was unable to converge, because of the limiting size of D_l . Over the first few queries, however, the performance rapidly increases as D_l expands such that convergence of the relevance vector selection can be achieved. As with the previous case study, $mRVM_2$ achieves good performances on even the limited initial D_l . Furthermore, improvements in decision accuracy are gained at a similar, if not a slightly greater, rate when compared to the GMM. This result means that superior decision-making performance is obtained throughout the querying process when adopting an $mRVM_2$ classifier. It is again worth noting that neither formulations of RVM suffer from a degradation in decision-making performance over later queries — indicating robustness to sampling bias in D_l . Again, this result can be attributed to the discriminative nature of the models, in addition to the fact that extraneous data are excluded from \mathcal{A} .

From Fig. 36(b), it can be seen that the RVMs have inferior f_1 -scores in comparison to the GMM. Distinct improvements in classification performance arise in correlation with appearance of new classes in D_u (see Fig. 39). The performances plateau at approximately 0.6 as data corresponding to Class 4 are not queried, resulting in the classifiers struggling to discriminate between classes 3 and 4. Nonetheless, as these classes share an optimal policy with respect to the decision process, decision-making performance is not impacted by these misclassifications — as demonstrated in Fig. 36(a).

Fig. 37 shows the class proportions in D_l throughout the risk-based active learning of the $mRVM$ classifiers. In one compares Figs. 37(a) and 37(b) with Fig. 30(b), it becomes apparent that the class proportions following the active learning of $mRVM_1$ and $mRVM_2$ are not representative of the overall dataset. In fact, the class imbalance present in the full dataset is lessened in D_l , with classes 1 and 2 garnering approximately 40% representation each, and class 3 possessing the remaining 20%. This deviation in class representation can be attributed to the RVM's sparsity — as only a few prototypical examples are required to sufficiently represent each class; once a class is established following a few queries, data associated the class need not be queried further. This result is further supported by the step-like improvements in f_1 -score.

The distributions for the number of queries made by each active learner are shown in Fig. 38. Similar to the previous case study, $mRVM_1$ and $mRVM_2$ both query fewer times on average when compared to the GMM. This result can also be explained by the RVM's

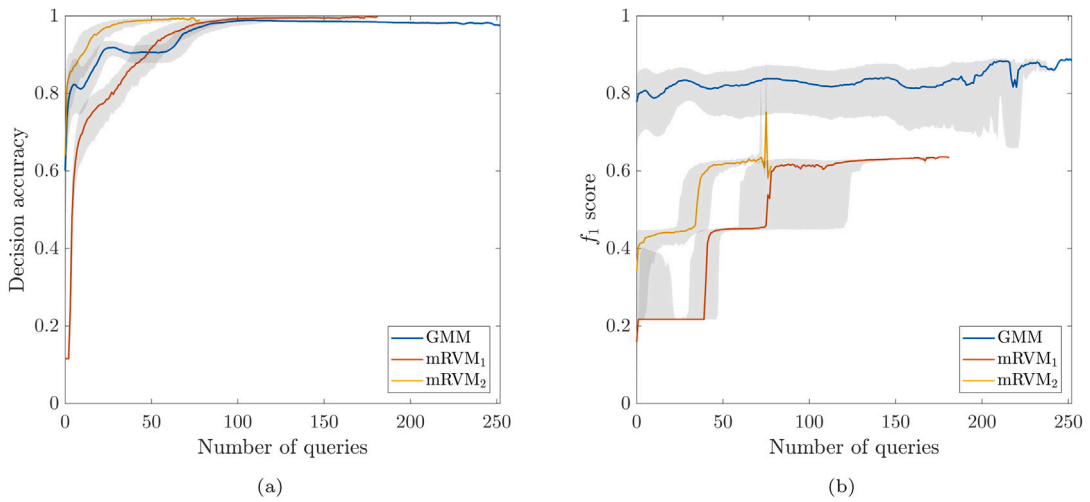


Fig. 36. Variation in median (a) decision accuracy and (b) f_1 score with number of label queries for an agent utilising (i) a GMM (ii) an mRVM₁ and (iii) an mRVM₂ statistical classifier learned via risk-based active learning. Shaded area shows the interquartile range.

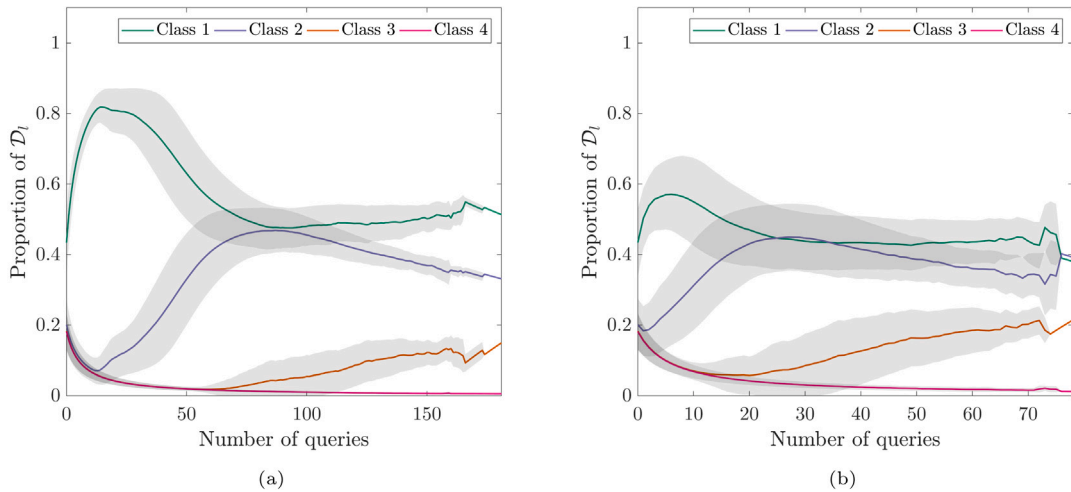


Fig. 37. Variation in class proportions within D_l with number of label queries for an agent utilising an (a) mRVM₁ and (b) mRVM₂ statistical classifier learned from D_l extended via risk-based active learning. Shaded area shows $\pm 1\sigma$.

ability to represent classes of data using only a few prototypical samples. Between mRVM₁ and mRVM₂, mRVM₂ yields superior performance in terms of the number of queries made, with both lower mean and variance. As previously mentioned, fewer queries corresponds to a reduced expenditure on inspections, with lower variance indicating more consistent performance.

Finally, Fig. 39 shows the total number of queries for each observation index in D_u . As with Fig. 38, it is apparent from Fig. 39 that, overall, the use of RVMs as a statistical classifier reduces the total number of queries made. It can be seen that mRVM₁ results in increased querying early in the dataset; this is to be expected as it was previously observed that this formulation struggles to construct a model capable of discriminating between classes, resulting in high EVPI for all regions of the feature space. As with the GMM, both RVM approaches result in an increase in the number of queries made as new patterns in the data present — specifically around observation indices 200, 700, and 1800 in D_u . Again, this result is in agreement with the trends in the f_1 -score shown in Fig. 36(b). The relative reduction in the number of queries made between observations 800 to 1600, for the RVMs compared to the GMM, can be attributed to the sparse representation achieved by the RVMs; as data for these classes had already been obtained, the EVPI associated with the classes was sufficiently low such that inspection was not necessary, with the exception of outlying data.

In summary, substituting mRVMs in place of the GMM, results in improved decision-making performance and robustness to sampling bias. Notably, the number of queries made throughout the learning process is also decreased by the introduction of discriminative classifiers into the decision process. These benefits are obtained by virtue of the RVM’s characteristic sparsity, in addition to the reduced reliance on assumptions regarding the distribution of data. Whilst mRVM₁ did yield noteworthy improvements in decision-making performance, mRVM₂ proved to be the stand-out model formulation.

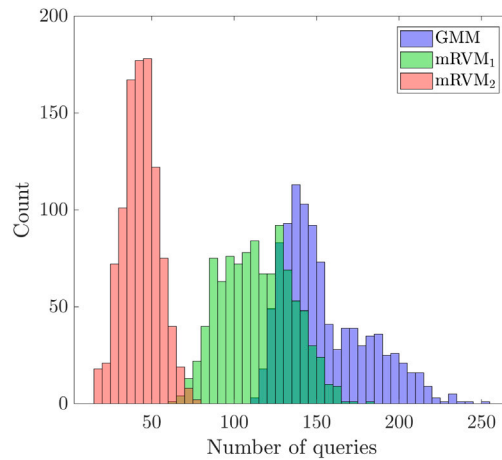


Fig. 38. Histograms showing the distribution of the number of queries from 1000 runs of the risk-based active learning of (i) a GMM (blue) (ii) an mRVM₁ (green) and (iii) an mRVM₂ (red) statistical classifier.

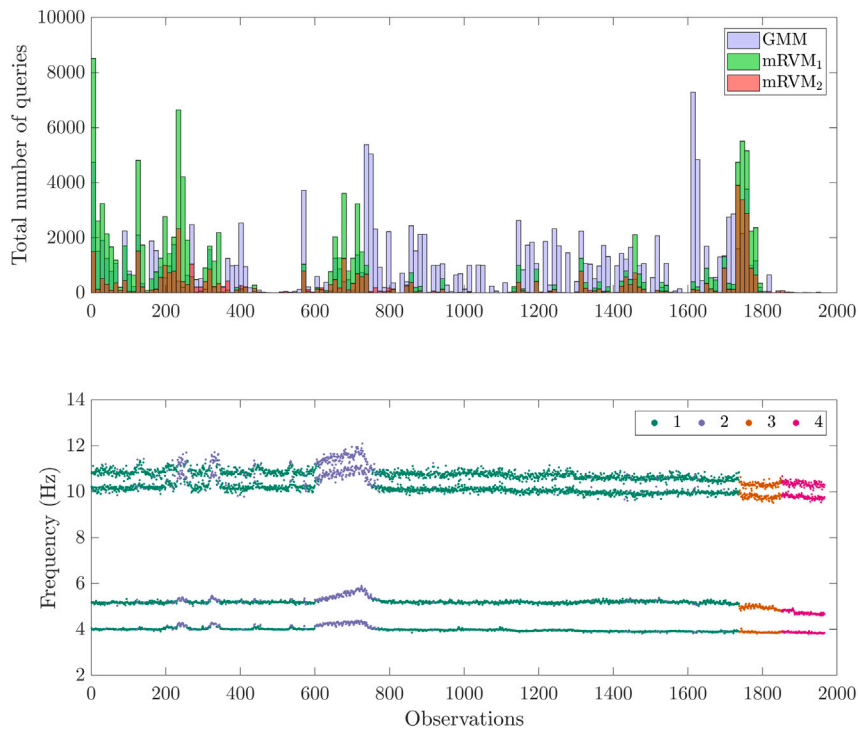


Fig. 39. Histograms showing the distribution of the number of queries for each observation in D_u from 1000 runs of risk-based active learning for (i) a GMM (blue) (ii) an mRVM₁ (green) and (iii) an mRVM₂ (red) statistical classifier. Below the histograms, a visualisation of the unlabelled dataset D_u is provided for reference.

6. Discussion

The results presented in Sections 4 and 5 hold several implications with respect to the development of decision-supporting SHM systems and thus bear further discussion.

From the case studies presented, it is abundantly clear that variability in performance arises according to several factors. Specifically, variation was observed between the various types of classifier employed within a decision process, and the approach by which the models are learned.

In general, the discriminative classifiers consistently yielded better performance than the GMM (standard and semi-supervised), both in terms of decision accuracy, robustness to sampling bias, and the number of queries made. In contrast, the decision-making performance of the semi-supervised generative models were highly dependent on the assumed distributions used for density estimation and the underlying distribution of data. Based on these results, faced with the conundrum of selecting a classifier to be used in a decision-supporting SHM system, an engineer may opt to use a discriminative classifier without second thought. However, the selection may require more nuanced deliberations. For example, digital twins are a form of asset management technology highly applicable to structures and infrastructure [2,42,43]. In this context, SHM systems are a necessary component of digital twins. Furthermore, recent work has identified generative models as being a core component of digital twin technology [44]. It follows that, if the context in which SHM system is being applied necessitates a generative model, such as within a digital twin, a discriminative model can be deemed an unsuitable choice of classifier. In this scenario, one may have to accept the effects of sampling bias, or find a method of accounting for them within a generative model. If *a priori* knowledge of data distributions is available (such as via expert elicitation, or transfer learning [45]), then density estimations can be carefully selected such that EM, latent-state smoothing, or an alternative approach to semi-supervision can be incorporated into the risk-based active learning algorithm.

Some degree of performance variability was also observed between $mRVM_1$ and $mRVM_2$. While fundamentally, these two classifiers share identical model-forms, they differ in the approach used to select relevance vectors. It was observed that $mRVM_2$ outperformed $mRVM_1$. This result occurred as $mRVM_2$ has the advantage of beginning the training process by considering the relevance of all data in D_l simultaneously in the initial set A . In contrast, $mRVM_1$ is constrained to consider the contribution of data in the context of the current active set A , which is initialised as empty. Although $mRVM_2$ proved the better of the two formulations for case studies presented in the current paper, for applications where D_l grows very large, $mRVM_2$ becomes computationally inefficient compared to $mRVM_1$, as discussed in [12]. It follows that, the quantity of data one expects to obtain throughout a decision-supporting SHM campaign must also factor into the selection of classification models learned via a risk-based active approach.

Another consideration that must be made in the selection of statistical classifiers used within SHM decision processes, risk-based active learning, and asset management technologies in general, is the uncertainty quantification with respect to outlying data. As previously mentioned, the generative models presented in the current paper make over-confident predictions for the class labels of outlying data — a result of data scarcity. This observation has concerning implications for the decision-support systems, as an agent utilising an over-confident classifier will be especially prone to making suboptimal decisions. While these decisions could yield benign consequences such as an unwarranted down-time, they could also lead to missed inspections and ultimately structural failures with potentially severe consequences. Fortunately, the discriminative classifiers considered for the current paper proved to have excellent uncertainty representation for outlying data, yielding high EVPI and therefore reliably triggering inspections where necessary.

Finally, a notable observation is that the number of queries made during the risk-based active learning can be reduced via the choice of statistical classifier within a decision process. This result is highly significant in the context of SHM decision-support because *queries correspond to structural inspections*. This correspondence indicates quite directly, that monetary savings can be achieved by selecting a classifier that results in minimal queries, thereby reducing the total operational costs incurred over the lifetime of structure. The aforementioned result highlights the great value to be gained via SHM systems, and provides further motivation for their development and implementation.

7. Conclusions

Risk-based active learning provides a methodology for the online development of statistical classifiers, specifically those being used in decision-supporting systems. In the context of SHM, this process is accomplished by querying labels for observed data via structural inspection, according to the expected value of the label information with respect to an O&M decision process. Although risk-based active learning has been demonstrated to yield improvements to decision-making performance, the generative classification models considered prior to the current paper suffer ill-effects related to the sampling bias introduced by the guided querying. This bias typically manifests as deterioration in decision-making performance later in the querying process.

The current paper proposed two approaches to address the issue of sampling bias; semi-supervised learning and discriminative classification models. Each approach was applied to a visual example, and an experimental case study. From these case studies, it was found that semi-supervised learning yielded variable performance, dependent on the correspondence between the underlying data distributions and the density estimations selected for the generative models. On the other hand, the discriminative models were found to mitigate the deterioration in decision-making performance. In addition, the case studies provided results with high significance to SHM decision-support in general. Specifically, attention was drawn to the fact that utilising differing classifiers in a decision process model can result in the decision-making agent possessing drastically different attitudes towards outlying data. Finally, it was also shown that the choice of classifier used in the process model can greatly affect the number of queries – and therefore inspections – made throughout an SHM campaign. This finding was particularly significant as it implies that, with the careful selection of the classifier within an SHM system, resource expenditure can be greatly reduced.

Declaration of competing interest

The authors declare that they have no known competing financial interests or personal relationships that could have appeared to influence the work reported in this paper.

Acknowledgements

The authors would like to acknowledge the support of the UK EPSRC via the Programme Grants EP/R006768/1 and EP/R004900/1. KW would also like to acknowledge support via the EPSRC Established Career Fellowship, UK EP/R003625/1. LAB was supported by Wave 1 of The UKRI Strategic Priorities Fund, UK under the EPSRC Grant EP/W006022/1, particularly the *Ecosystems of Digital Twins*, UK theme within that grant and The Alan Turing Institute, UK.

Appendix A. Gaussian mixture models

As stated in Section 3.1.2, the GMM represents each class k via a multivariate normal distribution, parametrised by mean μ_k and covariance Σ_k . In addition to the mean and covariance parameters of the Gaussian components, the mixture model requires specification of $p(y_i)$,

$$y_i \sim \text{Cat}(\lambda) \quad (\text{A.1})$$

where Cat denotes the categorical distribution parametrised by *mixing proportions* $\lambda = \{\lambda_1, \dots, \lambda_K\}$, such that,

$$P(y_i = k) = \lambda_k \quad (\text{A.2})$$

and,

$$\sum_{k=1}^K \lambda_k = 1 \quad (\text{A.3})$$

The parameters of the GMM that specify the joint distribution $p(y_i, \mathbf{x}_i)$ can be summarised as,

$$\Theta = \{(\mu_1, \Sigma_1, \lambda_1), \dots, (\mu_K, \Sigma_K, \lambda_K)\} \quad (\text{A.4})$$

To avoid over-fitting, a Bayesian methodology was adopted here to infer Θ from D_l . In the Bayesian approach, the parameters in Θ are considered random variables with prior distributions placed over them. As a conjugate distribution to the multivariate Gaussian, a normal-inverse-Wishart prior was selected such that,

$$\mu_k, \Sigma_k | y_i = k \sim \text{NIW}(\mathbf{m}_0, \kappa_0, \nu_0, S_0) \quad (\text{A.5})$$

where \mathbf{m}_0 , κ_0 , ν_0 and S_0 are hyperparameters of the mixture model. These hyperparameters can be interpreted in the following way [46]: \mathbf{m}_0 is the prior mean for each class mean μ_k , and κ_0 specifies the strength of the prior; S_0 is proportional to the prior mean for each class covariance Σ_k , and ν_0 specifies the strength of that prior. The hyperparameters were specified such that each class y_i was initially represented as a zero-mean and unit-variance Gaussian distribution.

For conjugacy with the categorical distribution, a Dirichlet prior was placed over the mixing proportions λ ,

$$p(\lambda) = \text{Dir}(\alpha) \propto \prod_{k=1}^K \lambda_k^{\alpha_k - 1} \quad (\text{A.6})$$

where $\alpha = \{\alpha_1, \dots, \alpha_K\}$ are hyperparameters of the mixture model. For the current paper, where $K = 4$, these hyperparameters were specified such that, initially, each class is equally likely, i.e. the prior probability of each class in the mixture model was 0.25.

By using conjugate priors, posterior distributions over the parameters of the GMM can be calculated from D_l analytically. The posterior NIW distribution is given by [47],

$$\mu_k, \Sigma_k | y_i = k, D_l \sim \text{NIW}(\mathbf{m}_n, \kappa_n, \nu_n, S_n) \quad (\text{A.7})$$

where \mathbf{m}_n , κ_n , ν_n , S_n are the updated parameters and are computed as follows,

$$\mathbf{m}_n = \frac{\kappa_0}{\kappa_0 + n_k} \mathbf{m}_0 + \frac{n_k}{\kappa_0 + n_k} \bar{\mathbf{x}}_k \quad (\text{A.8})$$

$$\kappa_n = \kappa_0 + n_k \quad (\text{A.9})$$

$$\nu_n = \nu_0 + n_k \quad (\text{A.10})$$

$$S_n = S_0 + S + \kappa_0 \mathbf{m}_0 \mathbf{m}_0^\top - \kappa_n \mathbf{m}_n \mathbf{m}_n^\top \quad (\text{A.11})$$

where n_k is the number of observations in D_l with label k , $\bar{\mathbf{x}}_k$ is the sample mean of observations with label k , and S is the empirical scatter matrix given by the uncentred sum-of-squares for observations in class k , $S = \sum_{i \in \mathbb{I}_k} \mathbf{x}_i \mathbf{x}_i^\top$ where \mathbb{I}_k is the set of indices for observations with label k .

The posterior for the mixing proportions λ , remains Dirichlet distributed, and is given by [47],

$$p(\lambda | D_l) \propto \prod_{k=1}^K \lambda_k^{n_k + \alpha_k - 1} \quad (\text{A.12})$$

Class predictions for unlabelled data in \mathcal{D}_u can be made by obtaining the posterior predictive distributions over the labels and observations; this is achieved by marginalising out the parameters of the model. The posterior predictive distribution for unlabelled observations is obtained via the following marginalisation,

$$p(\tilde{\mathbf{x}}_i | y_i = k, \mathcal{D}_l) = \iint p(\tilde{\mathbf{x}}_i | \boldsymbol{\mu}_k, \boldsymbol{\Sigma}_k) p(\boldsymbol{\mu}_k, \boldsymbol{\Sigma}_k | y_i = k, \mathcal{D}_l) d\boldsymbol{\mu}_k d\boldsymbol{\Sigma}_k \quad (\text{A.13})$$

resulting in the Student- t distribution [46],

$$(\tilde{\mathbf{x}}_i | y_i = k, \mathcal{D}_l) \sim \mathcal{T} \left(\mathbf{m}_n, \frac{\kappa_n + 1}{\kappa_n (v_n - D + 1)} S_n, v_n - D + 1 \right) \quad (\text{A.14})$$

where \mathbf{m}_n , κ_n , v_n , S_n are the updated hyperparameters and D is the dimensionality of the feature space. Here, the first two parameters of the Student- t distribution correspond to the mean and scale, respectively. The third parameter specifies the *degrees of freedom* and relates to the probability mass found in the tails of the distribution. The full functional form of the Student- t distribution can be found in [46].

Via a similar procedure, the posterior predictive distribution over the labels is obtained via the following marginalisation,

$$p(\tilde{y}_i | \mathcal{D}_l) = \int p(\tilde{y}_i | \lambda) p(\lambda | \mathcal{D}_l) d\lambda \quad (\text{A.15})$$

resulting in,

$$p(\tilde{y}_i = k | \mathcal{D}_l) = \frac{n_k + \alpha_k}{n + \alpha_0} \quad (\text{A.16})$$

where $n = \sum_{k=1}^K n_k$ and $\alpha_0 = \sum_{k=1}^K \alpha_k$.

Finally, the predictive distribution for the class labels given a new unlabelled observation $\tilde{\mathbf{x}}_i$ can be obtained using the posterior predictive distribution and applying Bayes' rule [7],

$$p(\tilde{y}_i = k | \tilde{\mathbf{x}}_i, \mathcal{D}_l) = \frac{p(\tilde{\mathbf{x}}_i | \tilde{y}_i = k, \mathcal{D}_l) p(\tilde{y}_i = k | \mathcal{D}_l)}{p(\tilde{\mathbf{x}}_i | \mathcal{D}_l)} \quad (\text{A.17})$$

Appendix B. Expectation-maximisation for Gaussian mixture models

The aim of semi-supervised learning via the EM algorithm is to infer updated distribution parameters $\boldsymbol{\Theta}$ from $\mathcal{D} = \mathcal{D}_l \cup \mathcal{D}_u$. The *maximum a posteriori* MAP estimate of these updated parameters is specified as follows,

$$\boldsymbol{\Theta} | \mathcal{D} = \operatorname{argmax}_{\boldsymbol{\Theta}} \left\{ \frac{p(\mathcal{D} | \boldsymbol{\Theta}) p(\boldsymbol{\Theta})}{p(\mathcal{D})} \right\} = \operatorname{argmax}_{\boldsymbol{\Theta}} \left\{ \frac{p(\mathcal{D}_u | \boldsymbol{\Theta}) p(\mathcal{D}_l | \boldsymbol{\Theta}) p(\boldsymbol{\Theta})}{p(\mathcal{D}_u, \mathcal{D}_l)} \right\} \quad (\text{B.1})$$

Implicit in the factorisation of $p(\mathcal{D} | \boldsymbol{\Theta})$ in Eq. (B.1), is the assumption that \mathcal{D}_l and \mathcal{D}_u are conditionally independent. This assumption holds for random querying, as samples selected in this manner are independent and identically distributed (iid). Unfortunately, active learning violates this assumption, as data in \mathcal{D}_l are not iid because of the preferential querying process and iterative model updating [11,20]. Convenient assumptions such as this are frequently relied upon in statistical and engineering analyses (particularly in active learning contexts [7]). As such, the assumption is embraced for the current case study in order to demonstrate the decision-making performance that one may achieve despite the violation.

To circumvent numerical instabilities, the MAP estimate in Eq. (B.1) is formulated as a maximisation of the expected joint log-likelihood across \mathcal{D} [26],

$$\begin{aligned} \mathcal{L}(\boldsymbol{\Theta} | \mathcal{D}_l, \mathcal{D}_u) \propto & \sum_{i=1}^m \log \sum_{k=1}^K p(\tilde{\mathbf{x}}_i | y_i = k, \boldsymbol{\Theta}) p(y_i = k | \boldsymbol{\Theta}) \\ & + \sum_{i=1}^n \log [p(\mathbf{x}_i | y_i = k) p(y_i = k | \boldsymbol{\Theta})] + \log p(\boldsymbol{\Theta}) \end{aligned} \quad (\text{B.2})$$

where the first term corresponds to the log-likelihood of the model over \mathcal{D}_u , the second term corresponds to the log-likelihood of the model over \mathcal{D}_l and the final term is the log-prior-likelihood of the model parameters. It should be noted that the first term contains a summation over the label space; this marginalises out y_i , which is considered a latent variable for data in \mathcal{D}_u .

During each E-step of the EM algorithm, the unlabelled observations are classified using the current estimate of the model parameters. During the M-step, updates for parameters $\boldsymbol{\Theta}$ are found using the predicted labels determined via the E-step, in addition to the acquired labelled data.

The E-step and M-step are more formally defined as follows [29].

E-step: A *responsibility matrix* R is computed for the unlabelled data corresponding to the posterior label prediction given by Eq. (A.17),

$$R[t, k] = r_{tk} = p(\tilde{y}_i = k | \tilde{\mathbf{x}}_i, \boldsymbol{\Theta}), \quad \forall \tilde{\mathbf{x}}_i \in \mathcal{D}_u \quad (\text{B.3})$$

The posterior label predictions for observations in \mathcal{D}_l are given by the known labels y_i , and can be represented using discrete delta functions [48],

$$p(y_i = k | \mathbf{x}_i) = \delta_{k, y_i}, \quad \forall (\mathbf{x}_i, y_i) \in \mathcal{D}_l \quad (\text{B.4})$$

where δ_{k,y_i} is the Kronecker delta function — equal to 1 when $y_i = k$, and 0 otherwise.

Whereas, for D_l , the number of observations corresponding to each class n_k are known, these values are indeterminate for data in D_u . As such, it is convenient to define for each class their *effective counts* r_k in D_u ; these may be calculated from the responsibility matrix as follows [46],

$$r_k = \sum_{t=1}^m r_{tk} \quad (\text{B.5})$$

The total (effective) counts per class over D can be summarised as,

$$N_k = n_k + r_k \quad (\text{B.6})$$

M-step: Updates for Θ are computed via modified versions of Eqs. (A.8) to (A.11) and Eq. (A.16). The mean and covariance parameters are updated as follows,

$$\mathbf{m}_n = \frac{\kappa_0}{\kappa_0 + N_k} \mathbf{m}_0 + \frac{N_k}{\kappa_0 + N_k} \bar{\mathbf{x}}_k \quad (\text{B.7})$$

$$\bar{\mathbf{x}}_k = \frac{\Delta \sum_{t=1}^n \delta_{k,y_t} \mathbf{x}_t + \sum_{t=1}^m r_{tk} \tilde{\mathbf{x}}_t}{N_k} \quad (\text{B.8})$$

$$\kappa_n = \kappa_0 + N_k \quad (\text{B.9})$$

$$v_n = v_0 + N_k \quad (\text{B.10})$$

$$S_n = S_0 + S_k + \kappa_0 \mathbf{m}_0 \mathbf{m}_0^\top - \kappa_n \mathbf{m}_n \mathbf{m}_n^\top \quad (\text{B.11})$$

$$S_k = \Delta \sum_{t=1}^n \delta_{k,y_t} \mathbf{x}_t \mathbf{x}_t^\top + \sum_{t=1}^m r_{tk} \tilde{\mathbf{x}}_t \tilde{\mathbf{x}}_t^\top \quad (\text{B.12})$$

which lead to MAP estimates given by,

$$\hat{\boldsymbol{\mu}}_k = \mathbf{m}_n \quad (\text{B.13})$$

$$\hat{\boldsymbol{\Sigma}}_k = \frac{S_n}{v_n + D + 2} \quad (\text{B.14})$$

The mixing proportions λ are updated as follows,

$$\frac{\alpha_k + N_k - 1}{\alpha_0 + N - K} \quad (\text{B.15})$$

where $N = |D| = n + m$.

Appendix C. Multiclass relevance vector machines

For the multiclass classification of an unlabelled data point $\tilde{\mathbf{x}}_i$, mRVMS employ a fundamentally (generalised) linear model-form as a foundation,

$$\mathbf{f}_i = \mathbf{W}^\top \mathbf{k}(\mathbf{x}_i, \tilde{\mathbf{x}}_i) \quad (\text{C.1})$$

where $\mathbf{f}_i = \{f_1, \dots, f_K\}^\top$ is a vector of K auxiliary variables that provide a ranking system by which the class membership of an unlabelled data point may be assessed. $\mathbf{k}(\mathbf{x}_i, \tilde{\mathbf{x}}_i)$ is an $n \times 1$ vector for which the i th element is specified by the *kernel function* $k(\mathbf{x}_i, \tilde{\mathbf{x}}_i)$. The kernel function specifies a set of basis functions that reflect the similarity between $\tilde{\mathbf{x}}_i$ and training inputs $\mathbf{x}_i = \{\mathbf{x}_i | (\mathbf{x}_i, y_i) \in D_l\}_{i=1}^n$; nonlinearity can be introduced into the RVM by selecting a nonlinear kernel function. For compactness, the vector $\mathbf{k}(\mathbf{x}_i, \tilde{\mathbf{x}}_i)$ is denoted as \mathbf{k}_i herein. $\mathbf{W} = \{\mathbf{w}_1, \dots, \mathbf{w}_K\}$ is an $n \times K$ matrix of tunable parameters referred to as *weights*, and where $\mathbf{w}_k = \{w_{1,k}, \dots, w_{n,k}\}^\top$. These weights act as a voting system that indicate which data in D_l are important, or ‘relevant’, for discriminating between classes.

In accordance with [12], the auxiliary variables in \mathbf{f}_i are assumed to adhere to a standardised noise model:

$$f_k | \mathbf{w}_k, \mathbf{k}_i \sim \mathcal{N}(\mathbf{w}_k^\top \mathbf{k}_i, 1) \quad (\text{C.2})$$

Predicted class labels \hat{y}_i are assigned to otherwise unlabelled data via the auxiliary variables \mathbf{f}_i by using a criterion specified by the multinomial probit link,

$$\hat{y}_i = k \iff f_k > f_j \quad \forall j \neq k \quad (\text{C.3})$$

Moreover, a probabilistic representation of class membership can be obtained via the following marginalisation,

$$p(\hat{y}_i = k | \mathbf{W}, \mathbf{k}_i) = \int p(\hat{y}_i = k | \mathbf{f}_i) p(\mathbf{f}_i | \mathbf{W}, \mathbf{k}_i) d\mathbf{f}_i \quad (\text{C.4})$$

where $p(\tilde{y}_i = k | \mathbf{f}_i) = \delta_{k, \tilde{y}_i}$. This marginalisation yields the multinomial probit likelihood [25],

$$p(\tilde{y}_i = k | \mathbf{W}, \mathbf{k}_i) = \mathbb{E}_{p(u)} \left[\prod_{j \neq k} \Phi(u + (\mathbf{w}_k - \mathbf{w}_j)^\top \mathbf{k}_i) \right] \quad (\text{C.5})$$

where $u \sim \mathcal{N}(0, 1)$ and Φ denotes the Gaussian cumulative distribution function. Here, it is worth noting that, in practice, Eq. (C.5) cannot be computed analytically and is instead approximated via Gauss–Hermite quadrature [12].

Having specified the predictive model, the relevant supervised learning problem for mRVMS can be expressed as the Bayesian inference of weights \mathbf{W} from D_l . In order to conduct Bayesian inference, a prior must first be placed upon the model parameters \mathbf{W} ; in this case,

$$w_{i,k} \sim \mathcal{N}(0, \alpha_{i,k}^{-1}) \quad (\text{C.6})$$

where the scale parameters $\alpha_{i,k}$ can be summarised in an $n \times K$ matrix \mathbf{A} and are assigned the following hyperprior,

$$\alpha_{i,k} \sim \Gamma(\tau, \nu) \quad (\text{C.7})$$

where τ and ν are hyperparameters related to the shape and scale, respectively. Given small values for the hyperparameters τ and ν , the prior and hyperprior presented above result in a Student- t distribution with zero-mean and small variance over the weights in \mathbf{W} . This restrictive distribution causes few weights to be non-zero, thereby inducing sparsity in the model [12,34].

The training of the mRVM model is accomplished by updating the model parameters via an EM algorithm [29]. For a detailed exposition of the learning procedure, the reader is directed to [35]. Here, the EM steps are provided.

The model weight parameters are updated as the MAP estimate of the posterior distribution over the weights; given by $\hat{\mathbf{W}} = \text{argmax}_{\mathbf{W}} p(\mathbf{W} | \mathbf{F}_l, \mathbf{K}_l, \mathbf{A}, D_l)$, where $\mathbf{F}_l = \{\mathbf{f}_1, \dots, \mathbf{f}_K\}^\top$ are auxiliary variables for data in D_l , and \mathbf{K}_l denotes $\mathbf{K}(\mathbf{x}_i, \mathbf{x}_i)$. It follows that, for a given class, the update for the weights across data in D_l is given by,

$$\hat{\mathbf{w}}_k = (\mathbf{K}_l \mathbf{K}_l^\top + \mathbf{A}_k)^{-1} \mathbf{K}_l \mathbf{f}_k^\top \quad (\text{C.8})$$

where \mathbf{A}_k is a diagonal matrix formed from the k th column of \mathbf{A} , i.e. $\mathbf{A}_k = \text{diag}(\alpha_{1,k}, \dots, \alpha_{n,k})$.

Following the formulation in [12,35], the posterior distribution over the auxiliary variables is derived to be a product of conically-truncated Gaussian distributions. For a given class j , the auxiliary variables can be updated $\forall k \neq j$ as follows,

$$\tilde{f}_{k,i} \leftarrow \hat{\mathbf{w}}_k^\top \mathbf{k}_i - \frac{\mathbb{E}_{p(u)} [\mathcal{N}(\hat{\mathbf{w}}_k^\top \mathbf{k}_i - \hat{\mathbf{w}}_j^\top \mathbf{k}_i, 1) \prod_{k \neq j, k} \Phi(u + \hat{\mathbf{w}}_j^\top \mathbf{k}_i - \hat{\mathbf{w}}_k^\top \mathbf{k}_i)]}{\mathbb{E}_{p(u)} [\Phi(u + \hat{\mathbf{w}}_j^\top \mathbf{k}_i - \hat{\mathbf{w}}_k^\top \mathbf{k}_i) \prod_{k \neq j, k} \Phi(u + \hat{\mathbf{w}}_j^\top \mathbf{k}_i - \hat{\mathbf{w}}_k^\top \mathbf{k}_i)]} \quad (\text{C.9})$$

and for class j ,

$$\tilde{f}_{j,i} \leftarrow \hat{\mathbf{w}}_j^\top \mathbf{k}_i - \sum_{k \neq j} (\tilde{f}_{k,i} - \hat{\mathbf{w}}_k^\top \mathbf{k}_i) \quad (\text{C.10})$$

where $\tilde{f}_{k,i}$ denotes the mean of the distribution over the latent auxiliary variable corresponding to class k for data point i in D_l .

By continuing to follow [35], one can derive the update for the hyperpriors $\alpha_{i,k}$ as the mean of the posterior distribution $p(\mathbf{A} | \mathbf{W}, D_l)$, given by,

$$\tilde{\alpha}_{i,k} = \frac{2\tau + 1}{u_{i,k}^2 + 2\nu} \quad (\text{C.11})$$

The iterative learning process requires the repeated application of the updates given in Eqs. (C.11), (C.8), (C.9) and (C.10), until a convergence criterion is met. Suitable convergence criteria are provided in [12].

As discussed in Section 4.2.1, RVMS utilise a subset of ‘relevant’ samples to construct basis functions, with mRVM₁ adopting a bottom-up approach and mRVM₂ adopting a top-down approach.

For mRVM₁, \mathcal{A} is initialised as an empty set with samples subsequently added or removed from \mathcal{A} based upon their contribution to the objective function given by the marginal log-likelihood $\mathcal{L}(\mathbf{A}) = \log p(\mathbf{F}_l | \mathbf{K}_l, \mathbf{A}) = \log \int p(\mathbf{F}_l | \mathbf{K}_l, \mathbf{W}) p(\mathbf{W} | \mathbf{A}) d\mathbf{W}$. In accordance with [12], to ensure $\mathcal{L}(\mathbf{A})$ is differentiable such that the fast type-II Maximum-Likelihood approach [49], can be employed, it is assumed that the scale parameter for each sample is common across classes, i.e. $\forall k \in \{1, \dots, K\}, \alpha_{i,k} = \alpha_i$. By following the procedure detailed in [49], one arrives at the following marginal likelihood decomposition,

$$\mathcal{L}(\mathbf{A}) = \mathcal{L}(\mathbf{A}_{-i}) + \ell(\alpha_i) \quad (\text{C.12})$$

where,

$$\mathcal{L}(\mathbf{A}_{-i}) = \sum_{k=1}^K -\frac{1}{2} \left[N \log 2\pi + \log |C_{-i}| + \mathbf{f}_k^\top C_{-i}^{-1} \mathbf{f}_k \right] \quad (\text{C.13})$$

and,

$$\ell(\alpha_i) = \sum_{k=1}^K \frac{1}{2} \left[\log \alpha_i - \log(\alpha_i + s_i) + \frac{q_{k,i}^2}{\alpha_i + s_i} \right] \quad (\text{C.14})$$

with $C_{-i} = \mathbf{I}_{n-1} + \mathbf{K}_{l,-i}^T \mathbf{A}_{-i}^{-1} \mathbf{K}_{l,-i}$, where \mathbf{I}_{n-1} denotes the identity matrix of size $n-1$, and where the subscript $-i$ is used to indicate matrices with entries corresponding to the i th data point in \mathcal{D}_l removed. The quantities s_i and $q_{k,i}$, introduced in Eq. (C.14) are given by [49],

$$s_i = \mathbf{k}_i^T C_{-i}^{-1} \mathbf{k}_i \quad \text{and} \quad q_{k,i} = \mathbf{k}_i^T C_{-i}^{-1} \mathbf{f}_k \quad (\text{C.15})$$

and can be interpreted as a ‘sparsity factor’ and ‘quality factor’, respectively. The sparsity factor indicates how much the descriptive information provided by the i th data point is already provided by the existing samples. The quality factor provides a measure of the i th sample’s ability to describe class k . Maximising $\mathcal{L}(\mathbf{A})$ with respect to α_i by following the procedure presented in [12,49], one can quantify the contribution of data point i to the objective function as,

$$\theta_i = \sum_{k=1}^K q_{k,i}^2 - K s_i \quad (\text{C.16})$$

For each iteration in the learning procedure, the contribution θ_i is then used to construct \mathcal{A} with samples satisfying $\theta_i > 0$ included, and other samples excluded. The model parameter update in Eq. (C.8) can be expressed utilising the sparse subset of data \mathcal{A} as follows:

$$\hat{\mathbf{W}}_* = (\mathbf{K}_* \mathbf{K}_*^T + \mathbf{A}_*)^{-1} \mathbf{K}_* \hat{\mathbf{F}}^T \quad (\text{C.17})$$

where \mathbf{K}_* denotes $\mathbf{K}(\mathbf{x}_l, \mathcal{A})$ and is $n^* \times n$, and \mathbf{A}_* is $n^* \times n^*$. Finally, the update given in Eq. (C.11) becomes,

$$\alpha_i = \frac{K s_i^2}{\theta_i} \quad (\text{C.18})$$

As discussed in Section 4.2.1, mRVM₂ prunes samples from \mathcal{A} . This is achieved by excluding samples with scales $\alpha_{i,k}$ sufficiently large that $w_{i,k}$ is negligible. The i th data point can be considered insignificant and can be removed from \mathcal{A} when $\alpha_{i,k} > 10^5 \forall k \in \{1, \dots, K\}$.

References

- [1] C.R. Farrar, K. Worden, *Structural Health Monitoring: A Machine Learning Perspective*, John Wiley & Sons, Ltd, 2013.
- [2] M. Grieves, J. Vickers, Digital twin: Mitigating unpredictable, undesirable emergent behavior in complex systems, in: *Transdisciplinary Perspectives on Complex Systems*, Berlin, Germany, 2017, pp. 85–113.
- [3] S.A. Niederer, M.S. Sacks, M. Girolami, K. Willcox, Scaling digital twins from the artisanal to the industrial, *Nat. Comput. Sci.* 1 (5) (2021) 313–320.
- [4] J. Nielsen, *Risk-Based Operation and Maintenance of Offshore Wind Turbines* (Ph.D. thesis), Aalborg University, 2013.
- [5] M.K. Hovgaard, R. Brincker, Limited memory influence diagrams for structural damage detection decision-making, *J. Civ. Struct. Health Monit.* 6 (2) (2016) 205–215, <http://dx.doi.org/10.1007/s13349-016-0153-z>.
- [6] A.J. Hughes, R.J. Barthorpe, N. Dervilis, C.R. Farrar, K. Worden, A probabilistic risk-based decision framework for structural health monitoring, *Mech. Syst. Signal Process.* 150 (2021) 107339.
- [7] L.A. Bull, T.J. Rogers, C. Wickramarachchi, E.J. Cross, K. Worden, N. Dervilis, Probabilistic active learning: An online framework for structural health monitoring, *Mech. Syst. Signal Process.* 134 (2019) 106294.
- [8] G. Martínez-Arellano, S. Ratchev, Towards an active learning approach to tool condition monitoring with Bayesian deep learning, in: *ECMS*, 2019.
- [9] D. Chakraborty, N. Kovvali, A. Papandreou-Suppappola, A. Chattopadhyay, An adaptive learning damage estimation method for structural health monitoring, *J. Intell. Mater. Syst. Struct.* 26 (2) (2015) 125–143.
- [10] A.J. Hughes, L.A. Bull, P. Gardner, R.J. Barthorpe, N. Dervilis, K. Worden, On risk-based active learning for structural health monitoring, *Mech. Syst. Signal Process.* 167 (2022) 108569.
- [11] S. Dasgupta, Two faces of active learning, *Theoret. Comput. Sci.* 412 (19) (2011) 1767–1781.
- [12] I. Psorakis, T. Damosoulas, M. Girolami, Multiclass relevance vector machines: Sparsity and accuracy, *IEEE Trans. Neural Netw.* 21 (10) (2010) 1588–1598.
- [13] F. Schwenker, E. Trentin, Pattern classification and clustering: A review of partially supervised learning approaches, *Pattern Recognit. Lett.* 37 (2014) 4–14.
- [14] C. Feng, M.Y. Liu, C.C. Kao, T.Y. Lee, Deep active learning for civil infrastructure defect detection and classification, in: *Computing in Civil Engineering 2017*, 2017, pp. 298–306.
- [15] D. Koller, N. Friedman, *Probabilistic Graphical Models: Principles and Techniques*, MIT Press, 2009.
- [16] U. Kjaerulff, A. Madsen, *Bayesian Networks and Influence Diagrams: A Guide To Construction and Analysis*, Springer, New York, 2008.
- [17] L. Sucar, *Probabilistic Graphical Models: Principles and Applications*, Springer, London, 2015.
- [18] K.G. Papakonstantinou, M. Shinozuka, Planning structural inspection and maintenance policies via dynamic programming and Markov processes. Part II: POMDP implementation, *Reliab. Eng. Syst. Saf.* 130 (2014) 214–224.
- [19] Z. Hamida, J.-A. Goulet, Modeling infrastructure degradation from visual inspections using network-scale state-space models, *Struct. Control Health Monit.* 27 (9) (2020) e2582.
- [20] S. Dasgupta, D. Hsu, Hierarchical sampling for active learning, in: *Proceedings of the 25th International Conference on Machine Learning ACM*, 2008.
- [21] A. Valkonen, B. Glisic, Evaluation tool for assessing the influence of structural health monitoring on decision-maker risk preferences, *Struct. Health Monit.* (2021) 1475921721992016.
- [22] M.A. Vega, M.D. Todd, A variational Bayesian neural network for structural health monitoring and cost-informed decision-making in miter gates, *Struct. Health Monit.* (2020).
- [23] A.J. Hughes, R.J. Barthorpe, K. Worden, On health-state transition models for risk-based structural health monitoring, in: *Dynamics of Civil Structures, Volume 2*, Springer International Publishing, 2022, pp. 49–60.
- [24] T. Fawcett, An introduction to ROC analysis, *Pattern Recognit. Lett.* 27 (8) (2006) 861–874.
- [25] T. Damosoulas, M. Girolami, Probabilistic multi-class multi-kernel learning: On protein fold recognition and remote homology detection, *Bioinformatics* 24 (10) (2008) 1264–1270.
- [26] O. Chapelle, B. Scholkopf, A. Zien, *Semi-Supervised Learning*, MIT Press, 2006.

- [27] S. Chen, F. Cerda, P. Rizzo, J. Bielak, J. Garrett, J. Kovačević, Semi-supervised multiresolution classification using adaptive graph filtering with application to indirect bridge structural health monitoring, *IEEE Trans. Signal Process.* 62 (11) (2014) 2879–2893.
- [28] L.A. Bull, K. Worden, N. Dervilis, Towards semi-supervised and probabilistic classification in structural health monitoring, *Mech. Syst. Signal Process.* 140 (2021) 106653.
- [29] A.P. Dempster, N.M. Laird, D.B. Rubin, Maximum likelihood from incomplete data via the EM algorithm, *J. R. Stat. Soc.* 39 (1) (1977) 1–38.
- [30] G. Einicke, *Smoothing, Filtering and Prediction: Estimating the Past, Present and Future*, BoD–Books on Demand, 2012.
- [31] J. Binder, K. Murphy, S. Russell, Space-efficient inference in dynamic probabilistic networks, in: *Proceedings of the Fifteenth International Joint Conference on Artificial Intelligence*, in: *IJCAI'97*, 2, Morgan Kaufmann Publishers Inc., San Francisco, CA, USA, 1997, pp. 1292–1296.
- [32] C. Cortes, V. Vapnik, Support-vector networks, *Mach. Learn.* 20 (3) (1995) 273–297.
- [33] J. Platt, Probabilistic outputs for support vector machines and comparisons to regularized likelihood methods, *Adv. Large Margin Classif.* 10 (3) (1999) 61–74.
- [34] M.E. Tipping, Sparse Bayesian learning and the relevance vector machine, *J. Mach. Learn. Res.* 1 (2001) 211–244.
- [35] T. Damoulas, M. Girolami, Combining feature spaces for classification, *Pattern Recognit.* 42 (11) (2009) 2671–2683.
- [36] S. Manocha, M. Girolami, An empirical analysis of the probabilistic k-nearest neighbour classifier, *Pattern Recognit. Lett.* 28 (13) (2007) 1818–1824.
- [37] J. Maeck, G. De Roeck, Description of Z24 benchmark, *Mech. Syst. Signal Process.* 17 (1) (2003) 127–131.
- [38] J. Maeck, B. Peeters, G. De Roeck, Damage identification on the Z24-bridge using vibration monitoring, *Smart Mater. Struct.* 10 (3) (2001) 512–517.
- [39] G. De Roeck, The state-of-the-art of damage detection by vibration monitoring: the SIMCES experience, *Struct. Control Health Monit.* 10 (2) (2003) 127–134.
- [40] B. Peeters, G. De Roeck, One-year monitoring of the Z24-bridge: environmental effects versus damage events, *Earthq. Eng. Struct. Dyn.* 30 (2) (2001) 149–171.
- [41] L.A. Bull, *Towards Probabilistic and Partially-Supervised Structural Health Monitoring* (Ph.D. thesis), University of Sheffield, 2020.
- [42] K. Worden, E.J. Cross, R.J. Barthorpe, D.J. Wagg, P. Gardner, On digital twins, mirrors, and virtualizations: Frameworks for model verification and validation, *ASCE-ASME J. Risk Uncert. Engrg. Sys. Part B Mech. Engrg.* 6 (3) (2020).
- [43] P. Gardner, M. Dal Borgo, V. Ruffini, A.J. Hughes, Y. Zhu, D.J. Wagg, Towards the development of an operational digital twin, *Vibration* 3 (3) (2020) 235–265.
- [44] G. Tsialiamanis, D.J. Wagg, N. Dervilis, K. Worden, On generative models as the basis for digital twins, *Data-Centric Eng.* 2 (2021).
- [45] P. Gardner, L.A. Bull, J. Gosliga, N. Dervilis, K. Worden, Foundations of population-based SHM, Part III: Heterogeneous populations – mapping and transfer, *Mech. Syst. Signal Process.* 148 (2021) 107142.
- [46] K.P. Murphy, *Machine Learning: A Probabilistic Perspective*, MIT Press, 2012.
- [47] A. Gelman, J.B. Carlin, H.S. Stern, D.B. Dunson, A. Vehtari, D. Rubin, *Bayesian Data Analysis*, Chapman and Hall/CRC, 2013.
- [48] D. Barber, *Bayesian Reasoning and Machine Learning*, Cambridge University Press, 2012.
- [49] M.E. Tipping, A.C. Faul, Fast marginal likelihood maximisation for sparse Bayesian models, in: C.M. Bishop, B.J. Frey (Eds.), *Proceedings of the Ninth International Workshop on Artificial Intelligence and Statistics*, in: *Proceedings of Machine Learning Research*, R4, PMLR, 2003, pp. 276–283.